

Data Path : Z:\svoasrv\HPCHEM1\BNA_E\Data\BE110424\
 Data File : BE101465.D
 Acq On : 4 Nov 2024 21:01
 Operator : RC/JU
 Sample : P4675-05
 Misc :
 ALS Vial : 14 Sample Multiplier: 1

Instrument :
 BNA_E
 ClientSampleId :
 COMP-5

Quant Time: Nov 04 22:08:25 2024
 Quant Method : Z:\svoasrv\HPCHEM1\BNA_E\Methods\8270-BE102824.M
 Quant Title : ASP BNA STANDARDS FOR 5 POINT CALIBRATION
 QLast Update : Tue Oct 29 01:26:30 2024
 Response via : Initial Calibration

Compound	R.T.	QIon	Response	Conc	Units	Dev(Min)
Internal Standards						
1) 1,4-Dichlorobenzene-d4	7.570	152	53466	20.000	ng	0.00
21) Naphthalene-d8	10.337	136	221932	20.000	ng	0.00
39) Acenaphthene-d10	14.180	164	143072	20.000	ng	0.00
64) Phenanthrene-d10	16.918	188	331097	20.000	ng	0.00
76) Chrysene-d12	21.072	240	474755	20.000	ng	0.00
86) Perylene-d12	23.363	264	655789	20.000	ng	0.00
System Monitoring Compounds						
5) 2-Fluorophenol	5.320	112	305457	100.132	ng	0.00
7) Phenol-d6	6.947	99	409522	96.816	ng	0.00
23) Nitrobenzene-d5	8.780	82	222253	62.900	ng	0.00
42) 2,4,6-Tribromophenol	15.684	330	265680	105.950	ng	0.00
45) 2-Fluorobiphenyl	12.799	172	587356	69.525	ng	0.00
79) Terphenyl-d14	19.509	244	1361464	66.002	ng	0.00

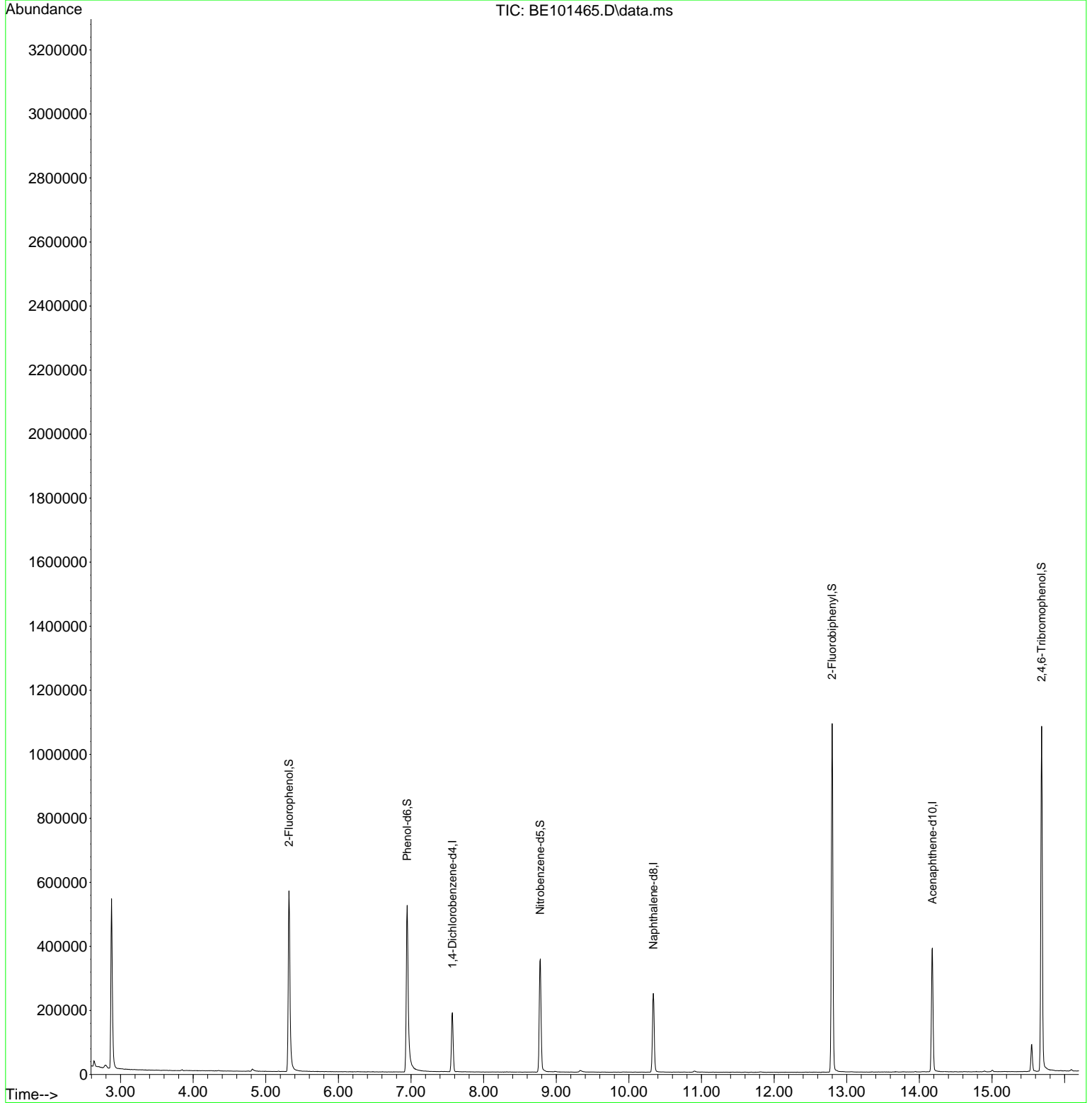
Target Compounds Qvalue

(#) = qualifier out of range (m) = manual integration (+) = signals summed

Data Path : Z:\svoasrv\HPCHEM1\BNA_E\Data\BE110424\
 Data File : BE101465.D
 Acq On : 4 Nov 2024 21:01
 Operator : RC/JU
 Sample : P4675-05
 Misc :
 ALS Vial : 14 Sample Multiplier: 1

Instrument :
 BNA_E
 ClientSampleId :
 COMP-5

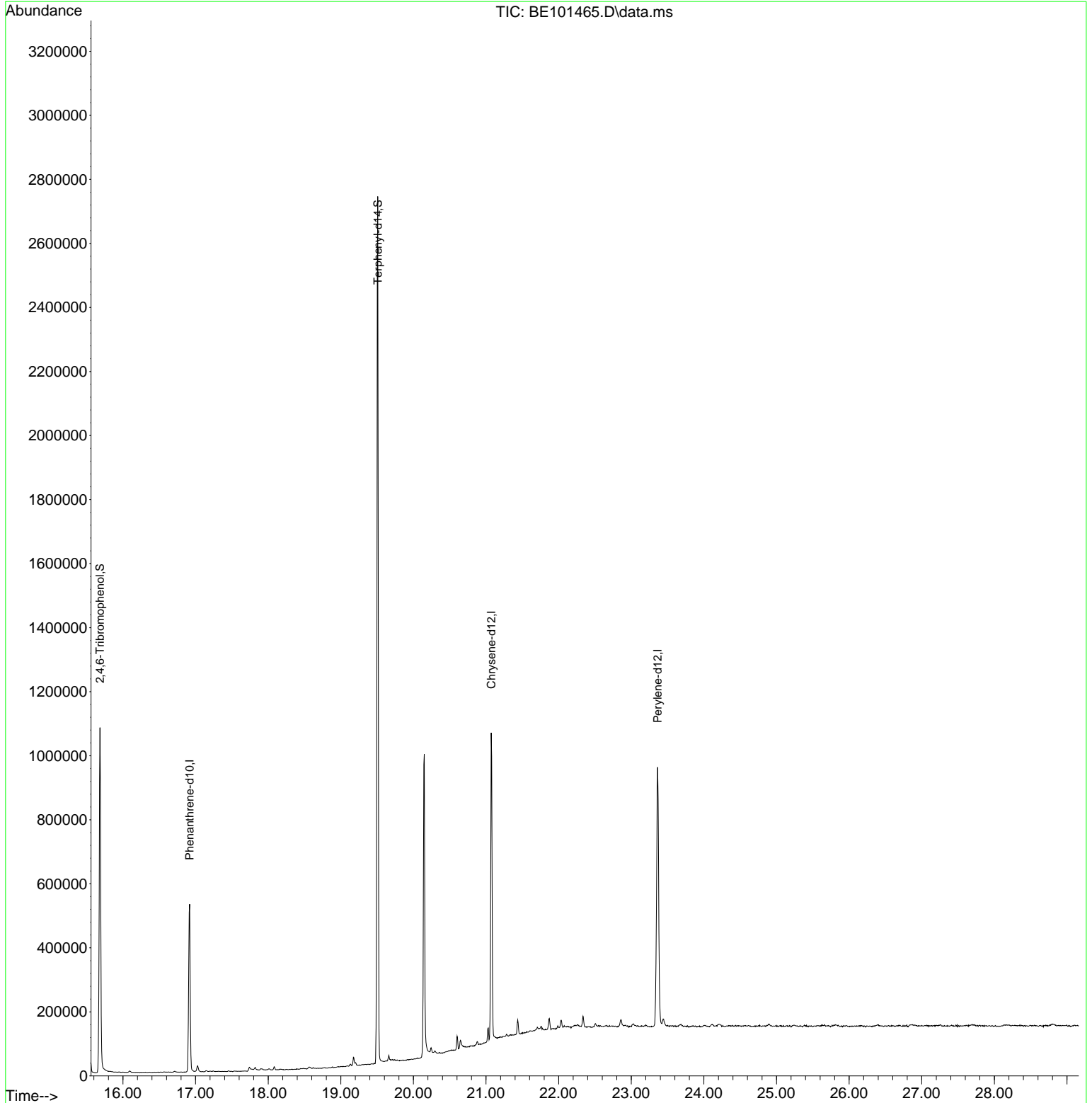
Quant Time: Nov 04 22:08:25 2024
 Quant Method : Z:\svoasrv\HPCHEM1\BNA_E\Methods\8270-BE102824.M
 Quant Title : ASP BNA STANDARDS FOR 5 POINT CALIBRATION
 QLast Update : Tue Oct 29 01:26:30 2024
 Response via : Initial Calibration

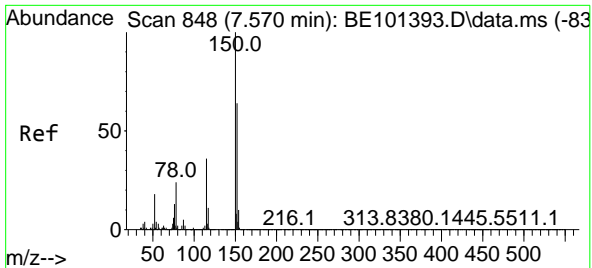


Data Path : Z:\svoasrv\HPCHEM1\BNA_E\Data\BE110424\
Data File : BE101465.D
Acq On : 4 Nov 2024 21:01
Operator : RC/JU
Sample : P4675-05
Misc :
ALS Vial : 14 Sample Multiplier: 1

Instrument :
BNA_E
ClientSampleId :
COMP-5

Quant Time: Nov 04 22:08:25 2024
Quant Method : Z:\svoasrv\HPCHEM1\BNA_E\Methods\8270-BE102824.M
Quant Title : ASP BNA STANDARDS FOR 5 POINT CALIBRATION
QLast Update : Tue Oct 29 01:26:30 2024
Response via : Initial Calibration

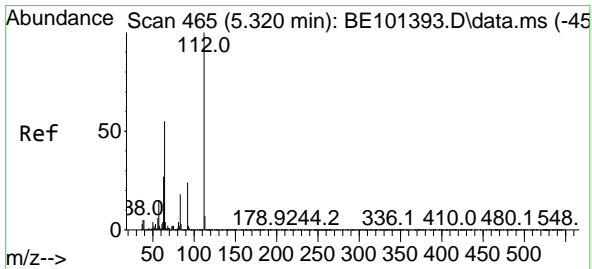
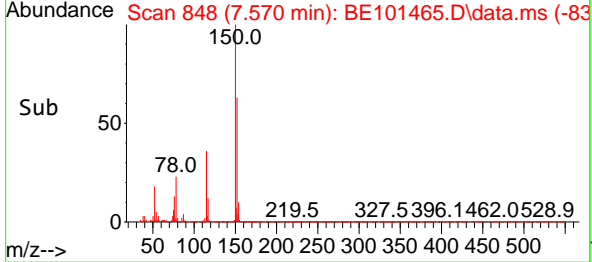
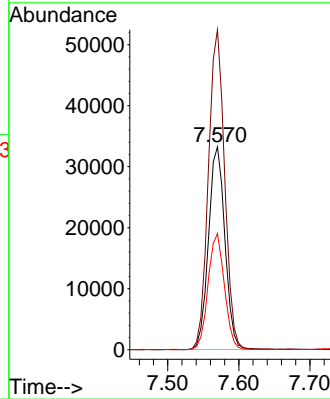
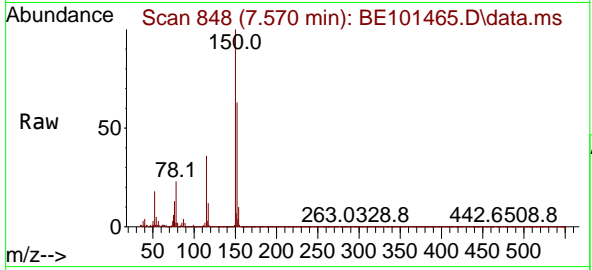




#1
 1,4-Dichlorobenzene-d4
 Concen: 20.000 ng
 RT: 7.570 min Scan# 84
 Delta R.T. 0.000 min
 Lab File: BE101465.D
 Acq: 4 Nov 2024 21:01

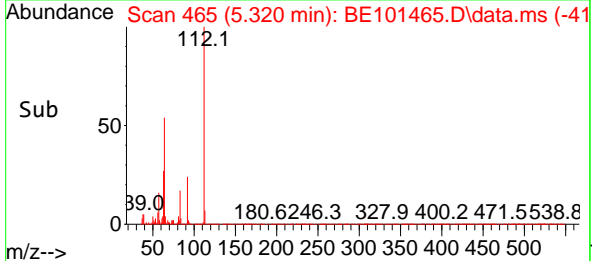
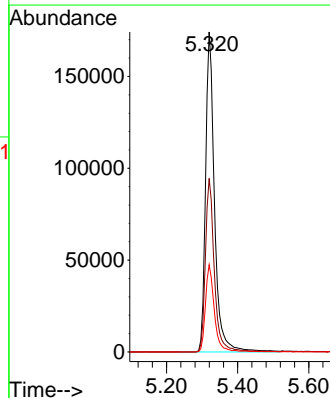
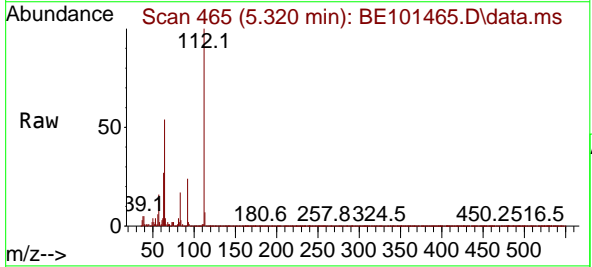
Instrument :
 BNA_E
 ClientSampleId :
 COMP-5

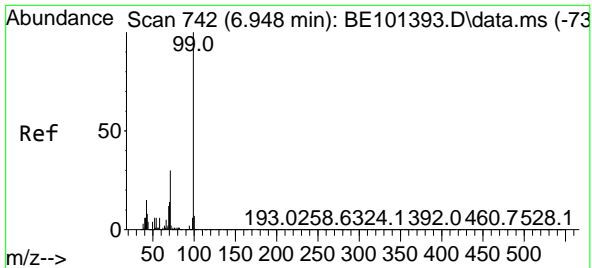
Tgt Ion	Resp	Lower	Upper
152	100		
150	157.8	124.2	186.4
115	57.2	45.3	67.9



#5
 2-Fluorophenol
 Concen: 100.132 ng
 RT: 5.320 min Scan# 465
 Delta R.T. -0.000 min
 Lab File: BE101465.D
 Acq: 4 Nov 2024 21:01

Tgt Ion	Resp	Lower	Upper
112	100		
64	54.2	43.7	65.5
63	27.3	21.4	32.2



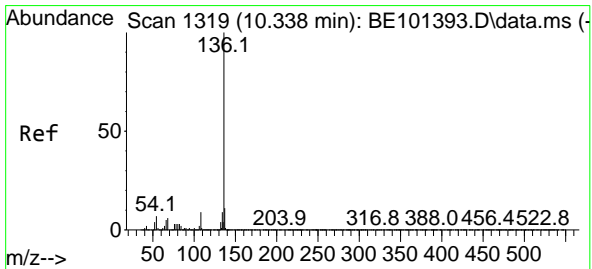
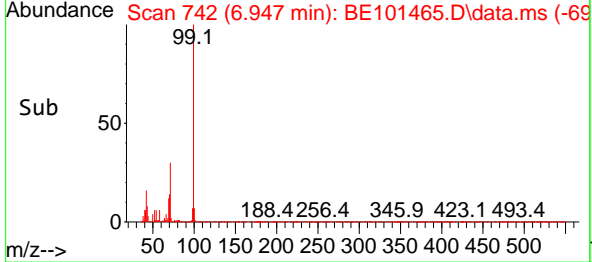
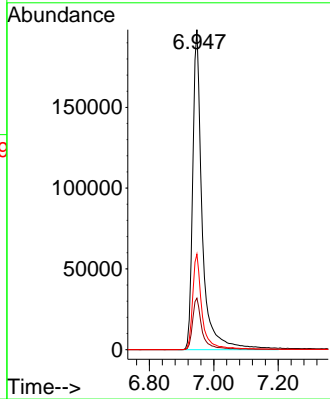
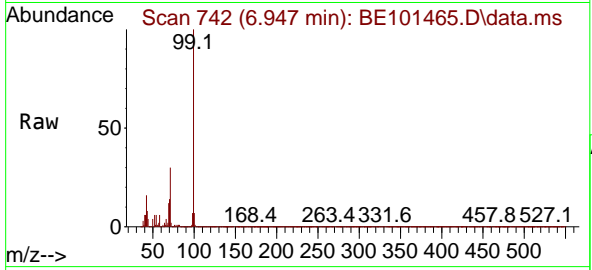


#7
 Phenol-d6
 Concen: 96.816 ng
 RT: 6.947 min Scan# 742
 Delta R.T. -0.000 min
 Lab File: BE101465.D
 Acq: 4 Nov 2024 21:01

Instrument : BNA_E
 Client Sample Id : COMP-5

Tgt Ion: 99 Resp: 409522

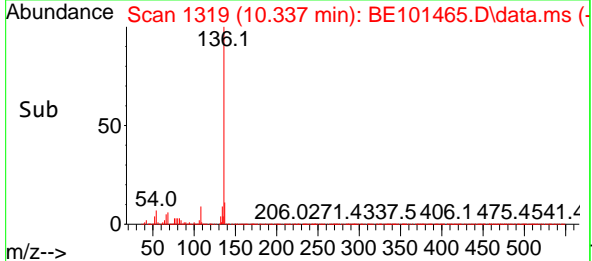
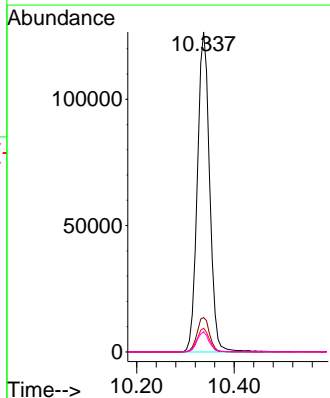
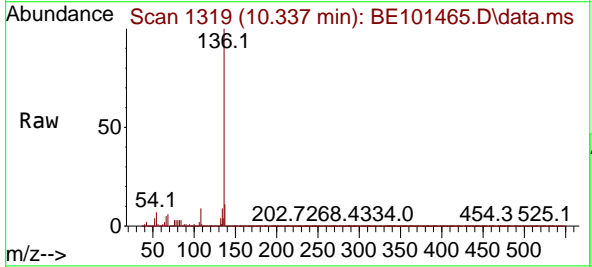
Ion	Ratio	Lower	Upper
99	100		
42	16.1	12.3	18.5
71	29.8	23.8	35.8

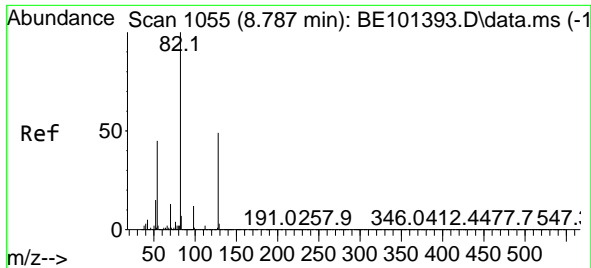


#21
 Naphthalene-d8
 Concen: 20.000 ng
 RT: 10.337 min Scan# 1319
 Delta R.T. -0.001 min
 Lab File: BE101465.D
 Acq: 4 Nov 2024 21:01

Tgt Ion: 136 Resp: 221932

Ion	Ratio	Lower	Upper
136	100		
137	10.8	9.0	13.6
54	7.4	5.9	8.9
68	6.3	4.8	7.2



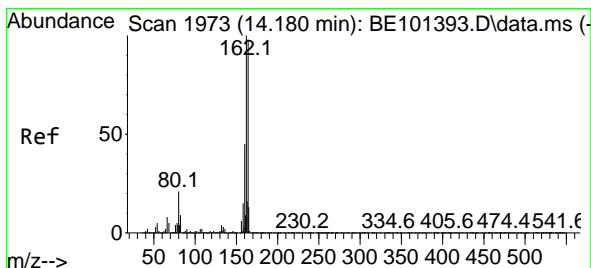
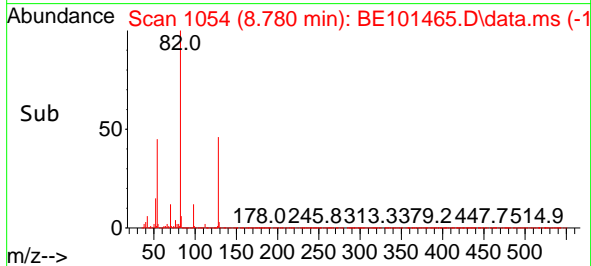
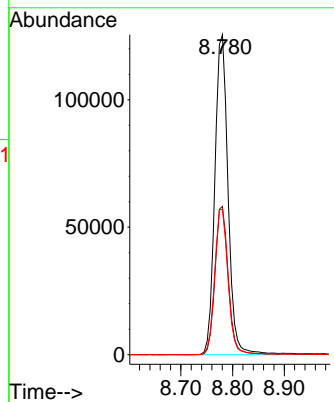
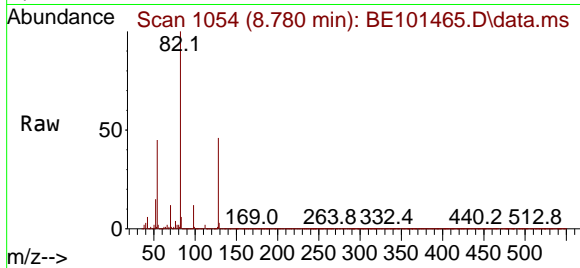


#23
 Nitrobenzene-d5
 Concen: 62.900 ng
 RT: 8.780 min Scan# 1055
 Delta R.T. -0.006 min
 Lab File: BE101465.D
 Acq: 4 Nov 2024 21:01

Instrument : BNA_E
 Client Sample Id : COMP-5

Tgt Ion: 82 Resp: 222253

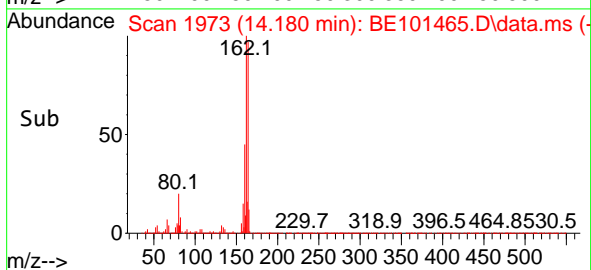
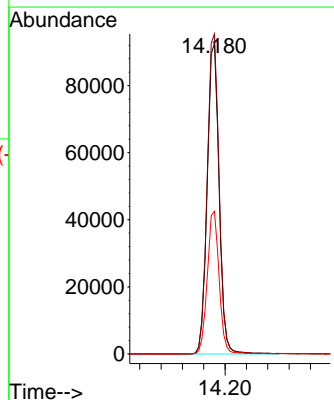
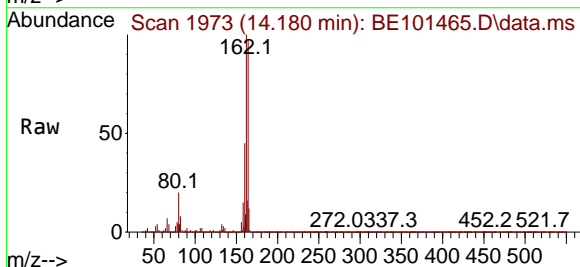
Ion	Ratio	Lower	Upper
82	100		
128	46.4	38.9	58.3
54	45.3	36.2	54.4

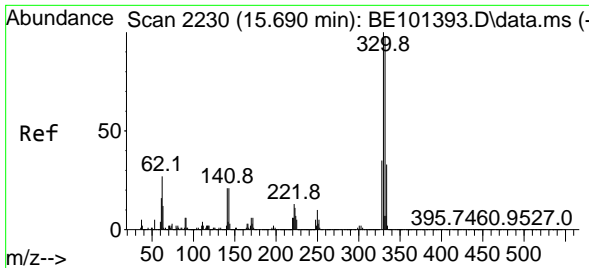


#39
 Acenaphthene-d10
 Concen: 20.000 ng
 RT: 14.180 min Scan# 1973
 Delta R.T. -0.000 min
 Lab File: BE101465.D
 Acq: 4 Nov 2024 21:01

Tgt Ion: 164 Resp: 143072

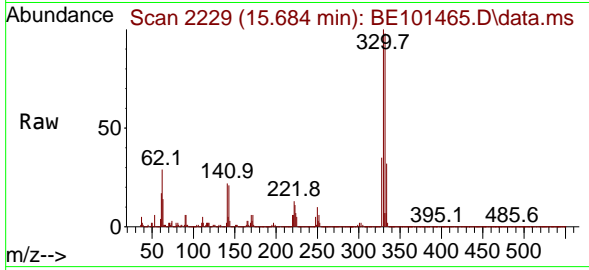
Ion	Ratio	Lower	Upper
164	100		
162	103.1	81.3	121.9
160	45.9	36.4	54.6



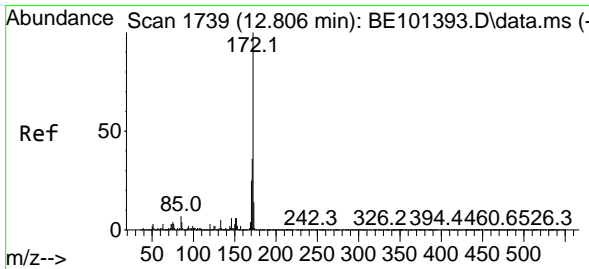
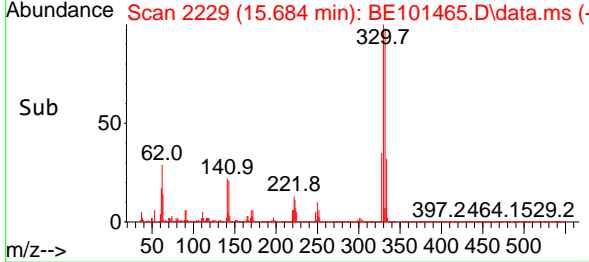
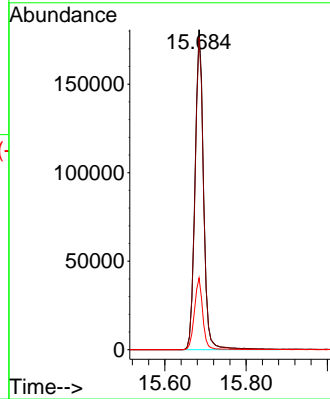


#42
 2,4,6-Tribromophenol
 Concen: 105.950 ng
 RT: 15.684 min Scan# 21
 Delta R.T. -0.006 min
 Lab File: BE101465.D
 Acq: 4 Nov 2024 21:01

Instrument :
 BNA_E
 ClientSampleId :
 COMP-5

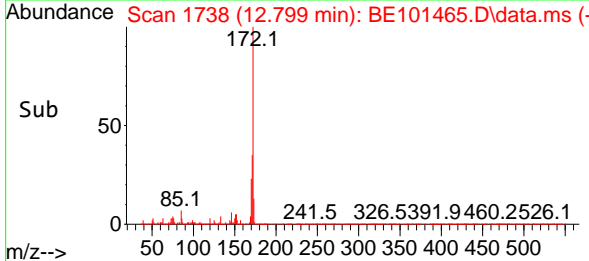
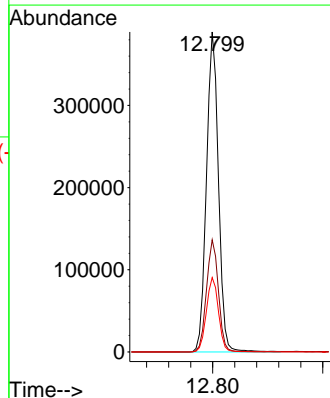
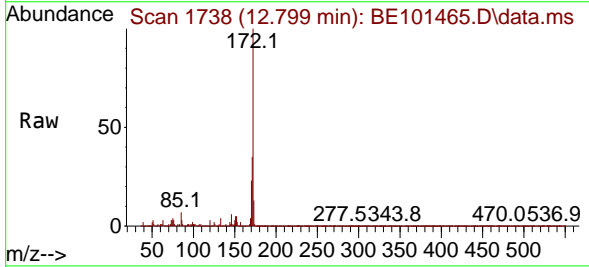


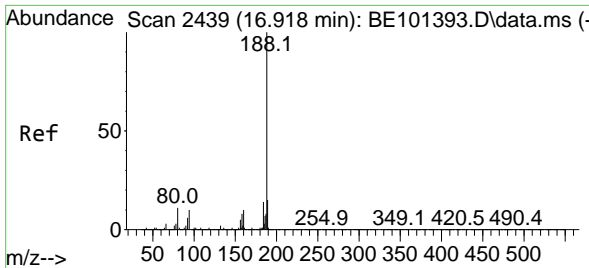
Tgt Ion:330 Resp: 265680
 Ion Ratio Lower Upper
 330 100
 332 97.9 78.2 117.2
 141 21.9 18.3 27.5



#45
 2-Fluorobiphenyl
 Concen: 69.525 ng
 RT: 12.799 min Scan# 1738
 Delta R.T. -0.006 min
 Lab File: BE101465.D
 Acq: 4 Nov 2024 21:01

Tgt Ion:172 Resp: 587356
 Ion Ratio Lower Upper
 172 100
 171 35.1 29.2 43.8
 170 23.2 19.8 29.6



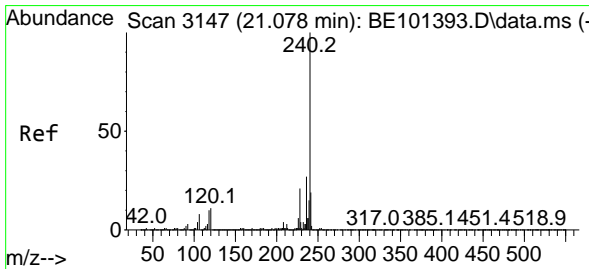
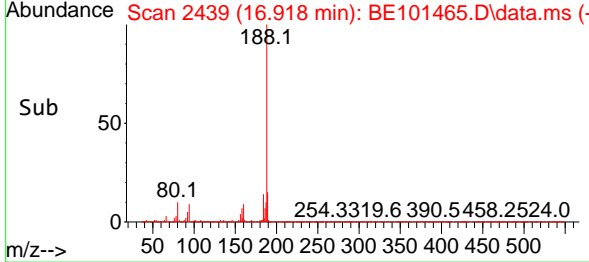
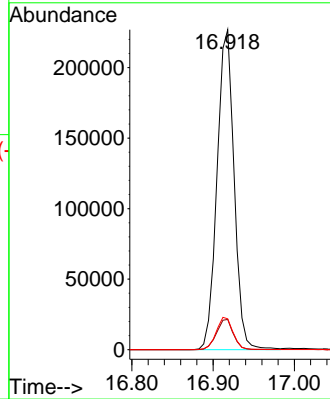
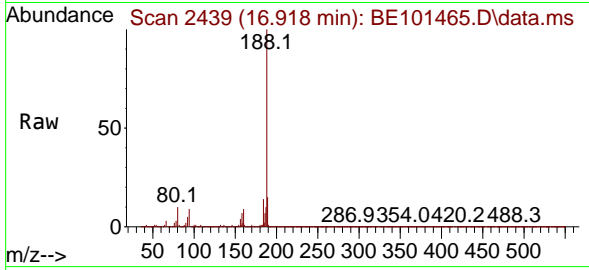


#64
 Phenanthrene-d10
 Concen: 20.000 ng
 RT: 16.918 min Scan# 24
 Delta R.T. -0.000 min
 Lab File: BE101465.D
 Acq: 4 Nov 2024 21:01

Instrument :
 BNA_E
 ClientSampleId :
 COMP-5

Tgt Ion:188 Resp: 331097

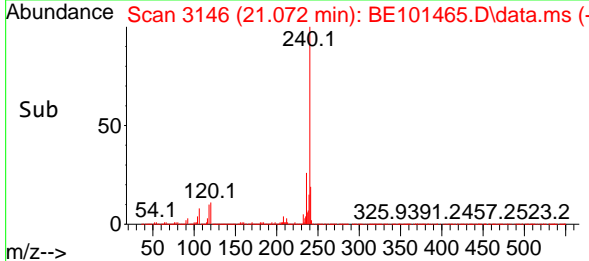
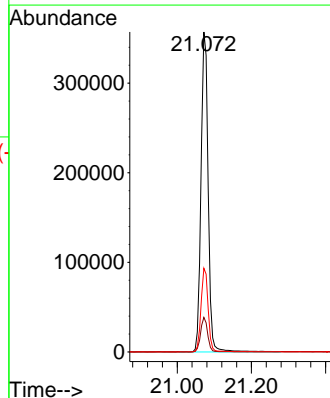
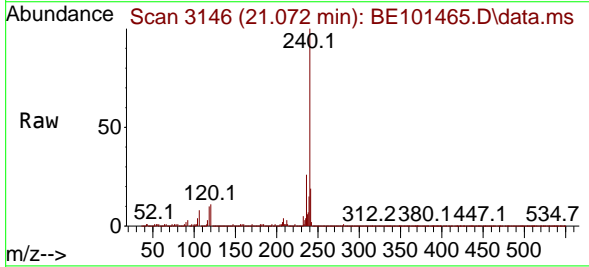
Ion	Ratio	Lower	Upper
188	100		
94	9.4	7.8	11.8
80	9.6	8.6	12.8

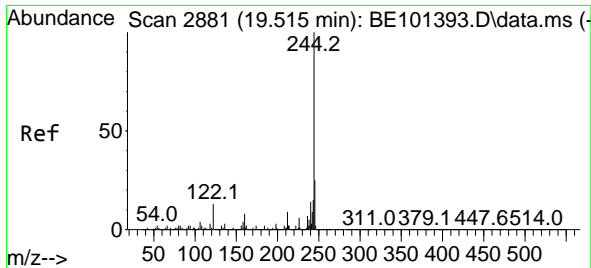


#76
 Chrysene-d12
 Concen: 20.000 ng
 RT: 21.072 min Scan# 3146
 Delta R.T. -0.006 min
 Lab File: BE101465.D
 Acq: 4 Nov 2024 21:01

Tgt Ion:240 Resp: 474755

Ion	Ratio	Lower	Upper
240	100		
120	10.8	9.0	13.4
236	26.2	21.4	32.0



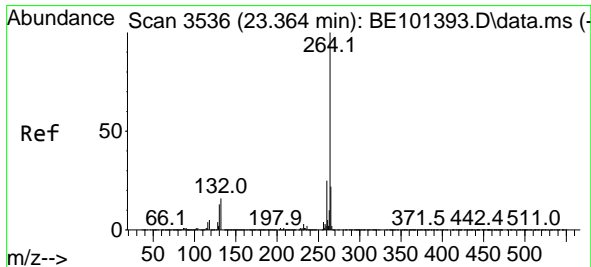
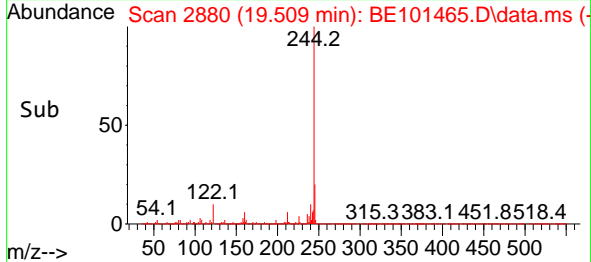
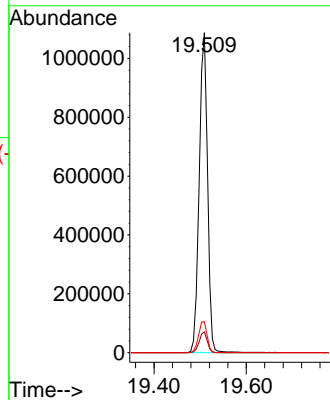
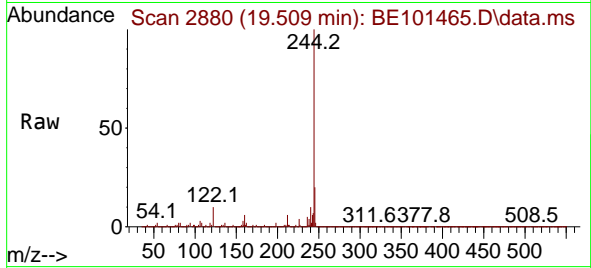


#79
 Terphenyl-d14
 Concen: 66.002 ng
 RT: 19.509 min Scan# 2880
 Delta R.T. -0.006 min
 Lab File: BE101465.D
 Acq: 4 Nov 2024 21:01

Instrument :
 BNA_E
 Client SampleId :
 COMP-5

Tgt Ion:244 Resp: 1361464

Ion	Ratio	Lower	Upper
244	100		
212	6.5	7.2	10.8#
122	9.7	10.4	15.6#



#86
 Perylene-d12
 Concen: 20.000 ng
 RT: 23.363 min Scan# 3536
 Delta R.T. -0.000 min
 Lab File: BE101465.D
 Acq: 4 Nov 2024 21:01

Tgt Ion:264 Resp: 655789

Ion	Ratio	Lower	Upper
264	100		
260	23.9	19.8	29.8
265	21.7	17.6	26.4

