

Data Path : Z:\HPCHEM1\BNA E\DATA\BE110515\
 Data File : BE091071.D
 Acq On : 5 Nov 2015 17:49
 Operator : UM/NP
 Sample : G4273-08
 Misc :
 ALS Vial : 11 Sample Multiplier: 1

Instrument :
 BNA_E
 ClientSampleId :
 C0AP4

Manual Integrations
 APPROVED

Mmdadoda
 11/6/2015 3:45:23 PM

Quant Time: Nov 06 06:31:43 2015
 Quant Method : Z:\HPCHEM1\BNA E\METHODS\SOM02.2-EPA-SIM-BE102715.M
 Quant Title : ASP BNA STANDARDS FOR 5 POINT CALIBRATION
 QLast Update : Fri Nov 06 05:41:57 2015
 Response via : Initial Calibration

Internal Standards	R.T.	QIon	Response	Conc	Units	Dev(Min)
1) 1,4-Dichlorobenzene-d4	6.89	152	3276	0.40	ng/ul	0.00
4) Naphthalene-d8	9.57	136	17590	0.40	ng/ul	0.00
8) Acenaphthene-d10	13.41	164	10857	0.40	ng/ul	0.00
12) Phenanthrene-d10	16.14	188	26131m	0.40	ng/ul	0.00
18) Chrysene-d12	20.29	240	31275	0.40	ng/ul	0.00
22) Perylene-d12	22.19	264	40367m	0.40	ng/ul	0.00
System Monitoring Compounds						
2) 1,4-Dioxane-d8	2.92	96	16576	7.03	ng/uL	-0.03
6) 2-Methylnaphthalene-d10	11.07	152	5624	0.23	ng/ul	0.00
16) Fluoranthene-d10	18.13	212	18185	0.25	ng/ul	0.00
Target Compounds						
						Ovalue
5) Naphthalene	9.62	128	62855	1.45	ng/ul	99
7) 2-Methylnaphthalene	11.14	142	123271	4.36	ng/ul	99
9) Acenaphthylene	13.14	152	44287	0.82	ng/ul	98
10) Acenaphthene	13.46	153	431910	11.63	ng/ul	92
11) Fluorene	14.45	166	556604	11.67	ng/ul	89
14) Phenanthrene	16.17	178	8801988m	29.17	ng/ul	
15) Anthracene	16.26	178	6094232	22.21	ng/ul	96
17) Fluoranthene	18.15	202	7466016m	21.14	ng/ul	
19) Pyrene	18.54	202	5298883	14.91	ng/ul#	79
20) Benzo(a)anthracene	20.26	228	616301	7.67	ng/ul	97
21) Chrysene	20.32	228	598842	6.47	ng/ul	98
23) Benzo(b)fluoranthene	21.63	252	379480	3.01	ng/ul	93
24) Benzo(k)fluoranthene	21.66	252	362957m	2.81	ng/ul	
25) Benzo(a)pyrene	22.10	252	428790m	3.69	ng/ul	
26) Indeno(1,2,3-cd)pyrene	23.84	276	836942m	1.71	ng/ul	
27) Dibenzo(a,h)anthracene	23.79	278	61157m	0.52	ng/ul	
28) Benzo(g,h,i)perylene	24.41	276	661131m	1.29	ng/ul	

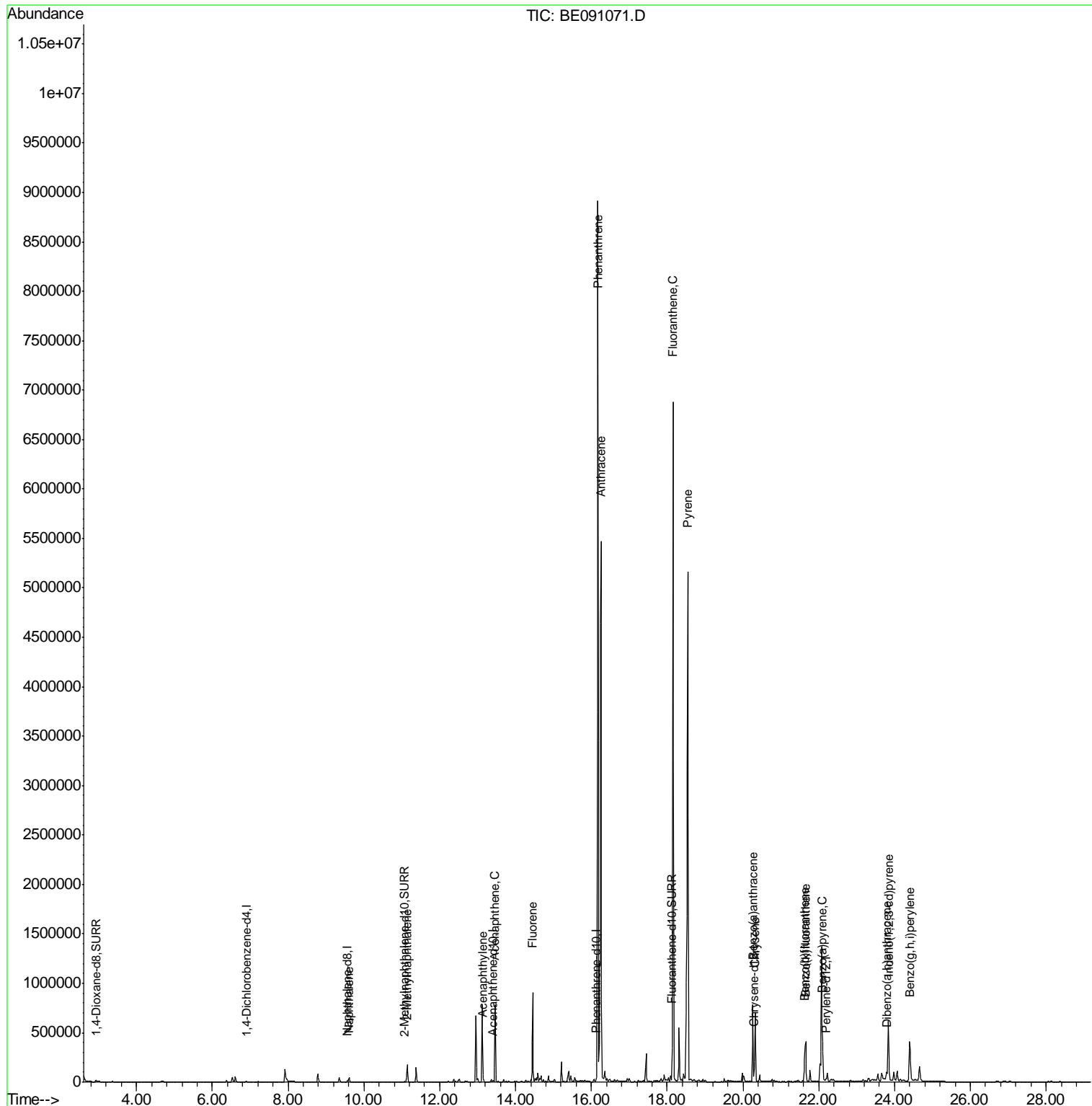
(#) = qualifier out of range (m) = manual integration (+) = signals summed

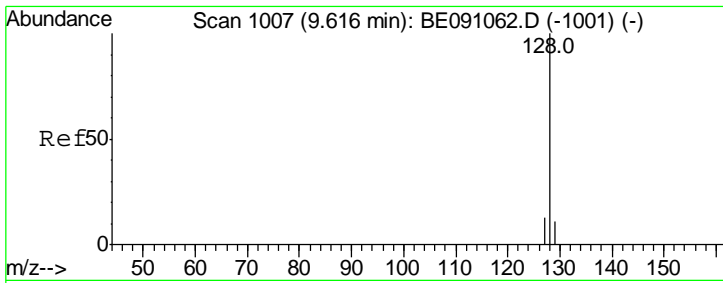
Data Path : Z:\HPCHEM1\BNA E\DATA\BE110515\
 Data File : BE091071.D
 Acq On : 5 Nov 2015 17:49
 Operator : UM/NP
 Sample : G4273-08
 Misc :
 ALS Vial : 11 Sample Multiplier: 1

Instrument :
 BNA_E
Client Sampled :
 C0AP4

Manual Integrations
APPROVED
 Mmdadoda
 11/6/2015 3:45:23 PM

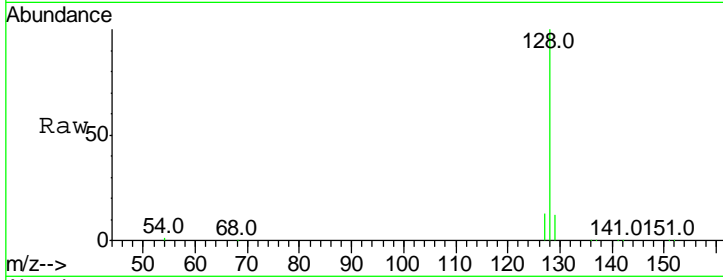
Quant Time: Nov 06 06:31:43 2015
 Quant Method : Z:\HPCHEM1\BNA E\METHODS\SOM02.2-EPA-SIM-BE102715.M
 Quant Title : ASP BNA STANDARDS FOR 5 POINT CALIBRATION
 QLast Update : Fri Nov 06 05:41:57 2015
 Response via : Initial Calibration





#5
 Naphthalene
 Concen: 1.45 ng/ul
 RT: 9.62 min Scan# 1007
 Delta R.T. -0.00 min
 Lab File: BE091071.D
 Acq: 5 Nov 2015 17:49

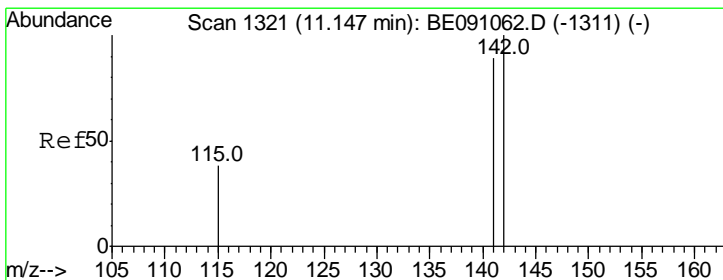
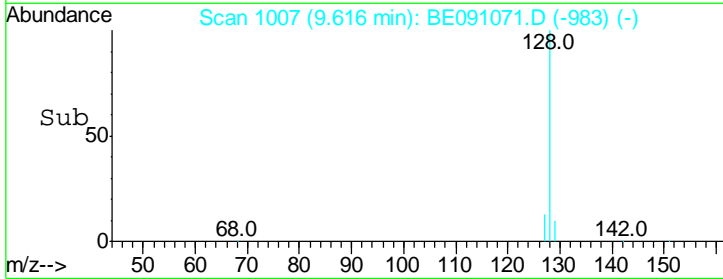
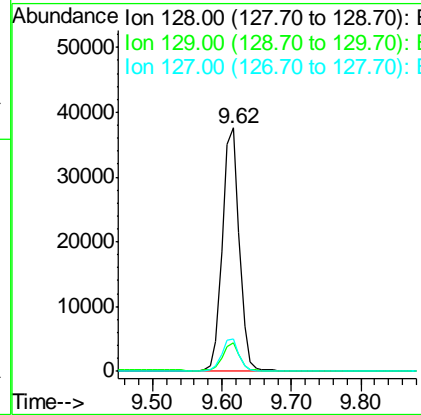
Instrument :
 BNA_E
ClientSampled :
 C0AP4



Tgt Ion:128 Resp: 62855

Ion	Ratio	Lower	Upper
128	100		
129	11.8	9.8	14.8
127	13.1	10.7	16.1

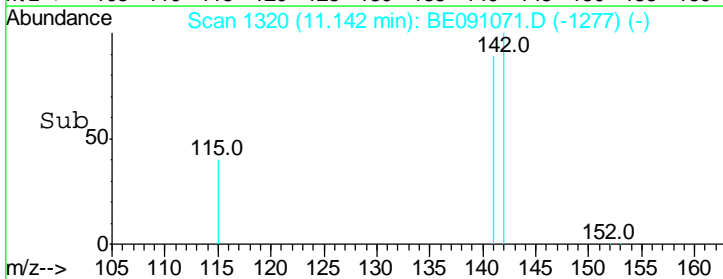
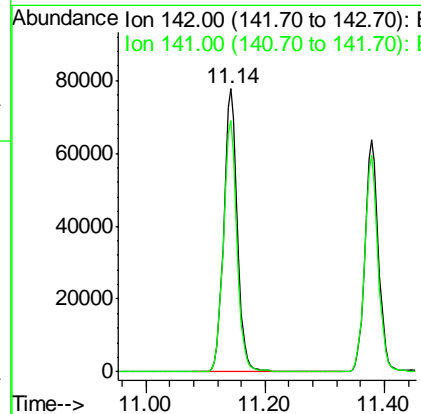
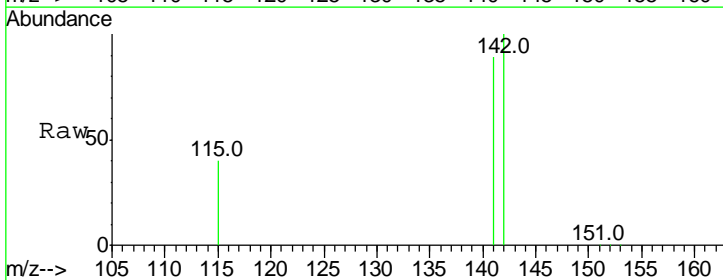
Manual Integrations
APPROVED
 Mmdadoda
 11/6/2015 3:45:23 PM

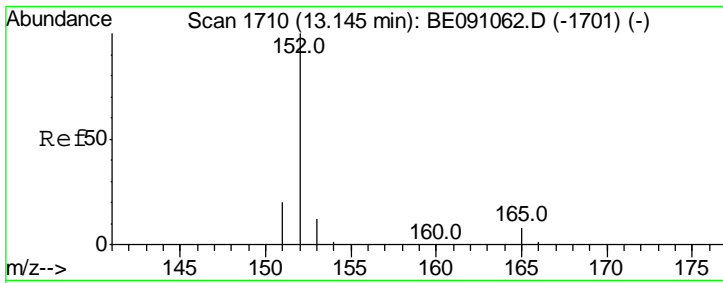


#7
 2-Methylnaphthalene
 Concen: 4.36 ng/ul
 RT: 11.14 min Scan# 1320
 Delta R.T. -0.00 min
 Lab File: BE091071.D
 Acq: 5 Nov 2015 17:49

Tgt Ion:142 Resp: 123271

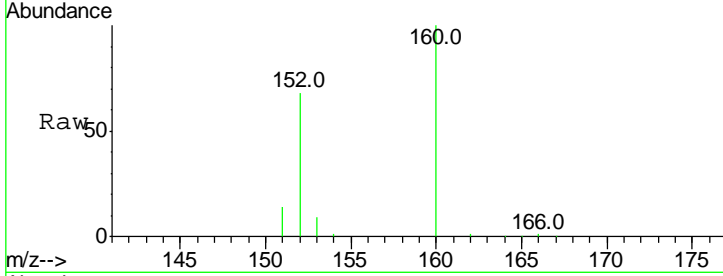
Ion	Ratio	Lower	Upper
142	100		
141	89.0	70.3	105.5





#9
 Acenaphthylene
 Concen: 0.82 ng/ul
 RT: 13.14 min Scan# 1710
 Delta R.T. -0.00 min
 Lab File: BE091071.D
 Acq: 5 Nov 2015 17:49

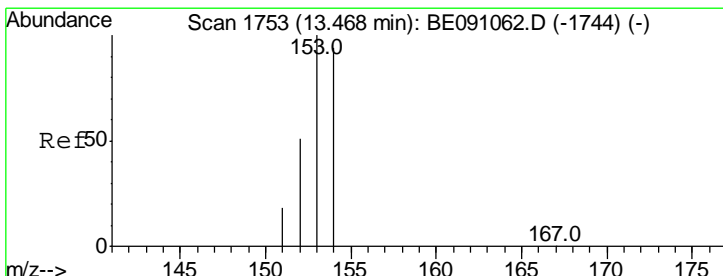
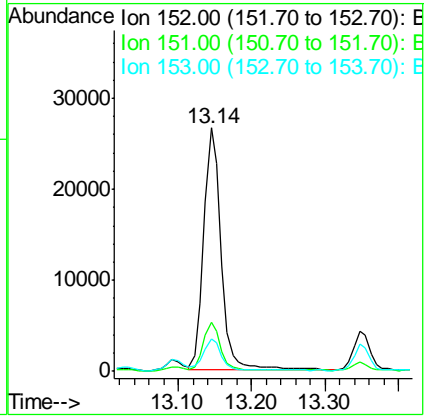
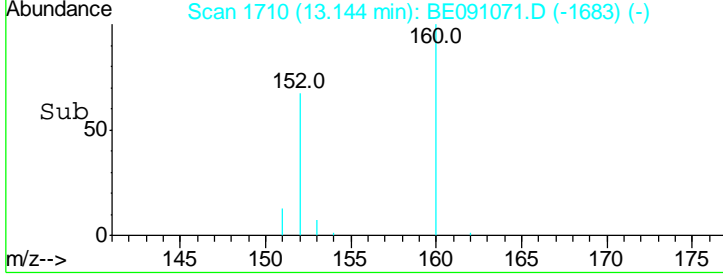
Instrument :
 BNA_E
 ClientSampled :
 C0AP4



Tgt Ion:152 Resp: 44287

Ion	Ratio	Lower	Upper
152	100		
151	20.1	16.8	25.2
153	13.3	11.3	16.9

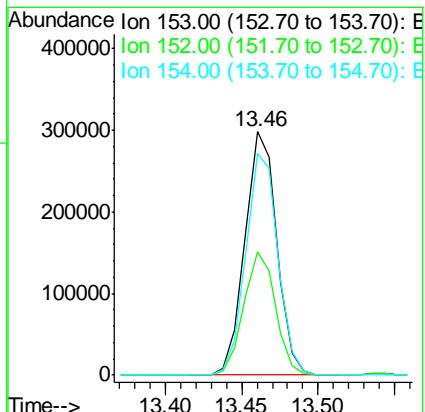
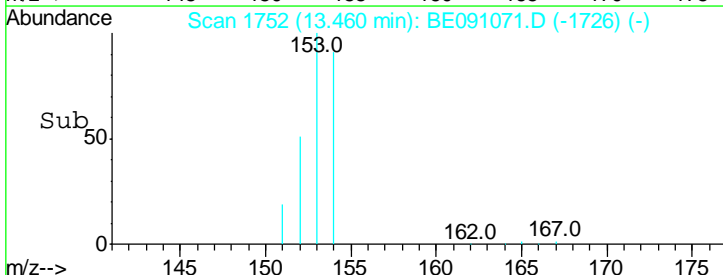
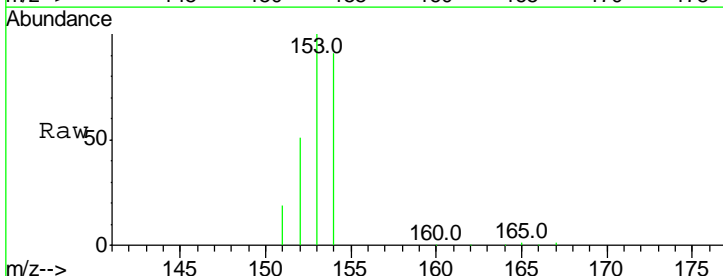
Manual Integrations
 APPROVED
 Mmddadoda
 11/6/2015 3:45:23 PM

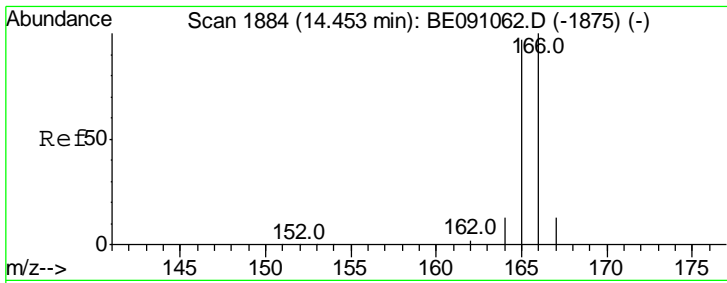


#10
 Acenaphthene
 Concen: 11.63 ng/ul
 RT: 13.46 min Scan# 1752
 Delta R.T. -0.01 min
 Lab File: BE091071.D
 Acq: 5 Nov 2015 17:49

Tgt Ion:153 Resp: 431910

Ion	Ratio	Lower	Upper
153	100		
152	50.8	42.3	63.5
154	91.2	64.7	97.1



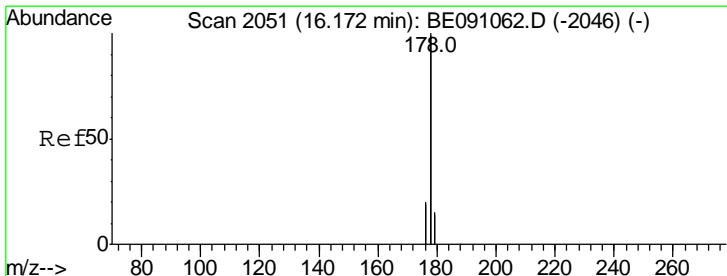
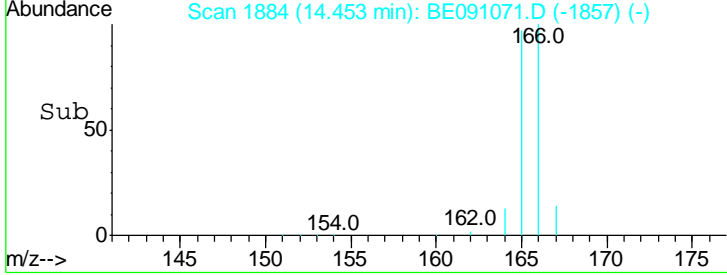
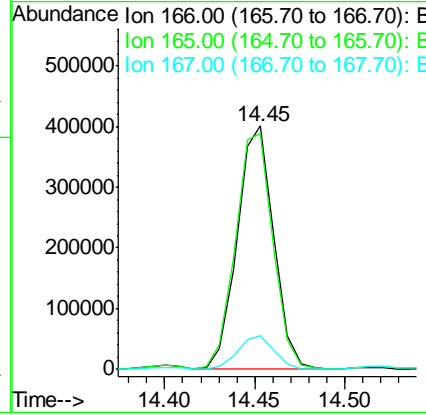
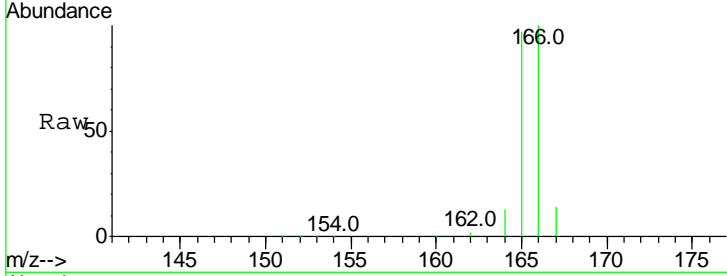


#11
 Fluorene
 Concen: 11.67 ng/ul
 RT: 14.45 min Scan# 1884
 Delta R.T. -0.00 min
 Lab File: BE091071.D
 Acq: 5 Nov 2015 17:49

Instrument :
 BNA_E
 ClientSampled :
 C0AP4

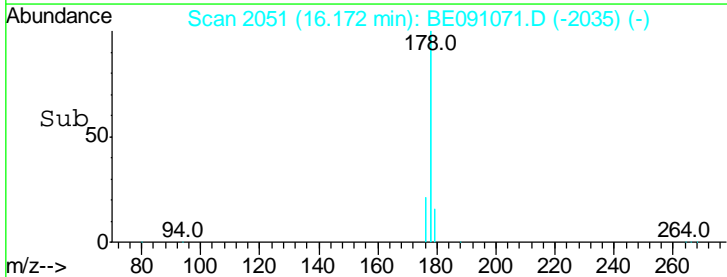
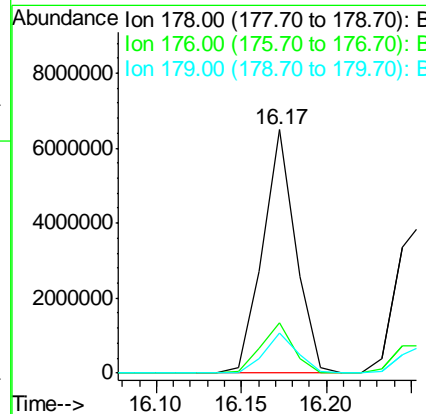
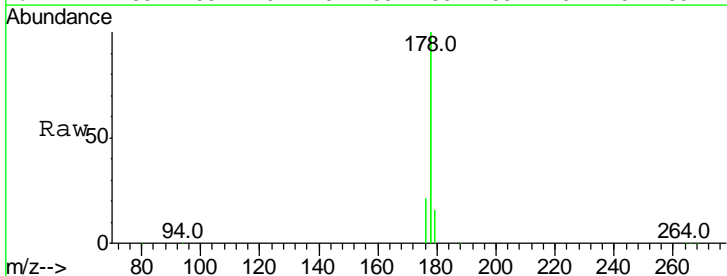
Tgt Ion	Resp	Lower	Upper
166	100		
165	96.7	87.6	131.4
167	13.7	11.1	16.7

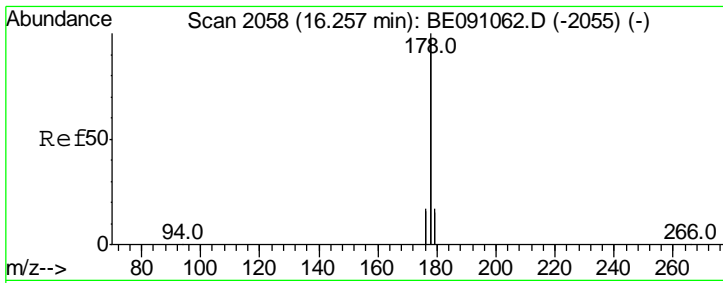
Manual Integrations
APPROVED
 Mmddadoda
 11/6/2015 3:45:23 PM



#14
 Phenanthrene
 Concen: 29.17 ng/ul m
 RT: 16.17 min Scan# 2051
 Delta R.T. -0.00 min
 Lab File: BE091071.D
 Acq: 5 Nov 2015 17:49

Tgt Ion	Resp	Lower	Upper
178	100		
176	20.9	16.2	24.4
179	16.3	12.8	19.2





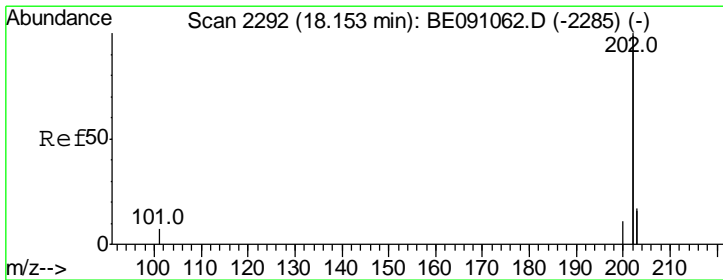
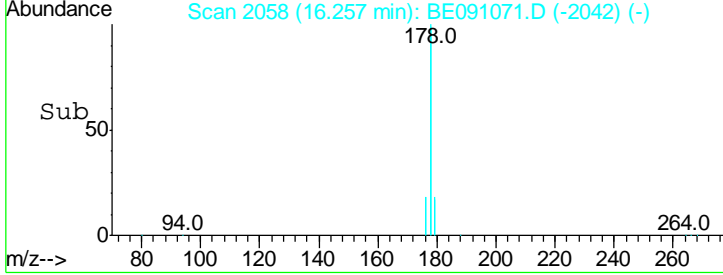
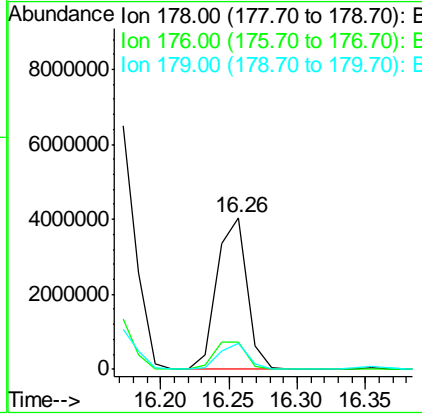
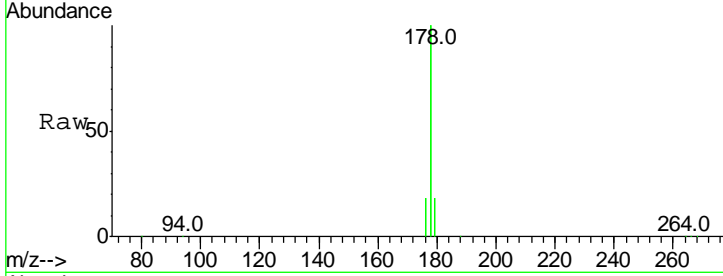
#15
 Anthracene
 Concen: 22.21 ng/ul
 RT: 16.26 min Scan# 2058
 Delta R.T. -0.00 min
 Lab File: BE091071.D
 Acq: 5 Nov 2015 17:49

Instrument :
 BNA_E
 ClientSampled :
 C0AP4

Tgt Ion:178 Resp: 6094232

Ion	Ratio	Lower	Upper
178	100		
176	17.7	15.8	23.8
179	17.6	13.3	19.9

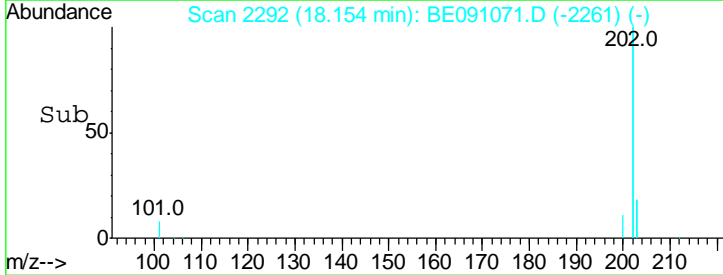
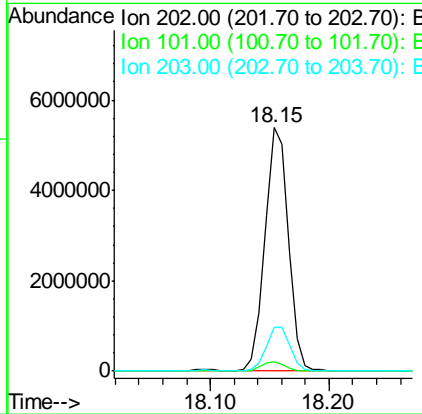
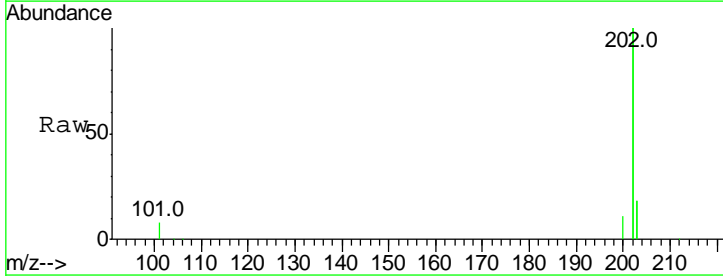
Manual Integrations
APPROVED
 Mmdadoda
 11/6/2015 3:45:23 PM

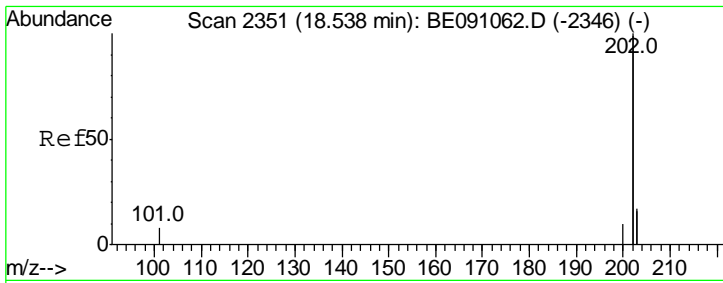


#17
 Fluoranthene
 Concen: 21.14 ng/ul m
 RT: 18.15 min Scan# 2292
 Delta R.T. 0.00 min
 Lab File: BE091071.D
 Acq: 5 Nov 2015 17:49

Tgt Ion:202 Resp: 7466016

Ion	Ratio	Lower	Upper
202	100		
101	8.1	0.0	33.1
203	18.1	0.0	37.2





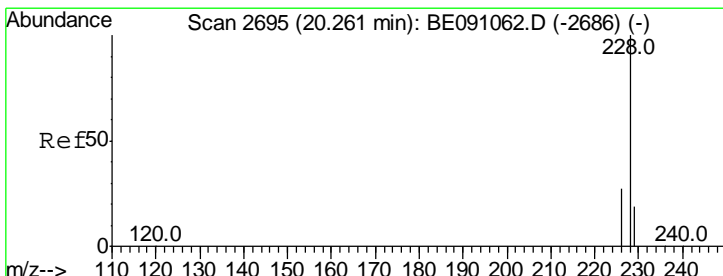
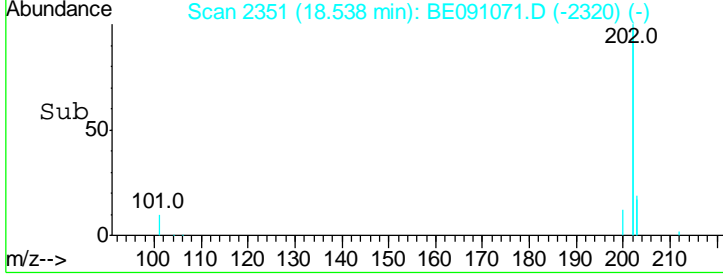
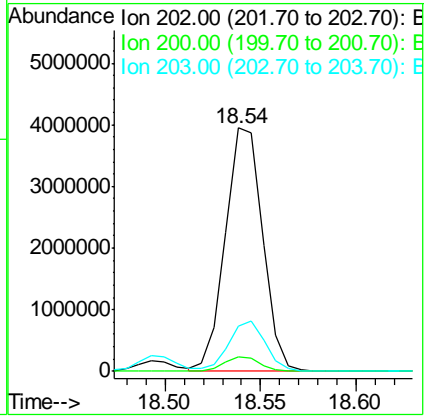
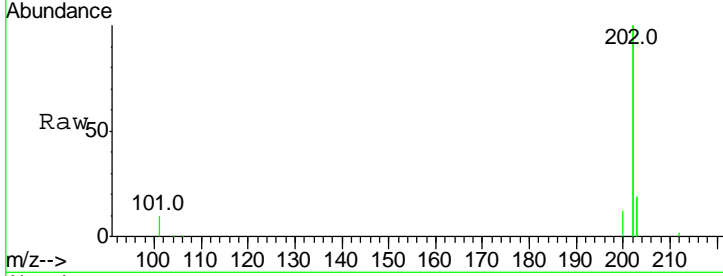
#19
 Pyrene
 Concen: 14.91 ng/ul
 RT: 18.54 min Scan# 2351
 Delta R.T. 0.00 min
 Lab File: BE091071.D
 Acq: 5 Nov 2015 17:49

Instrument :
 BNA_E
Client Sampled :
 C0AP4

Tgt Ion: 202 Resp: 5298883

Ion	Ratio	Lower	Upper
202	100		
200	5.9	18.0	27.0#
203	18.7	13.8	20.6

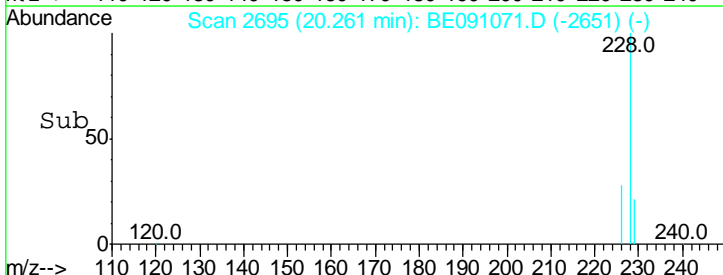
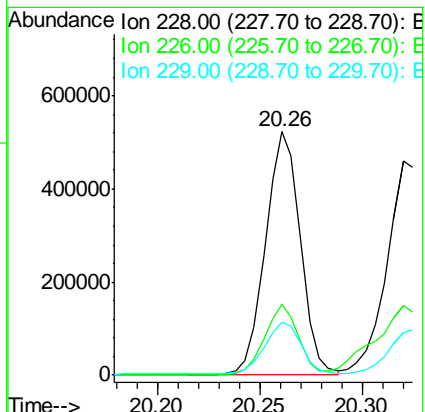
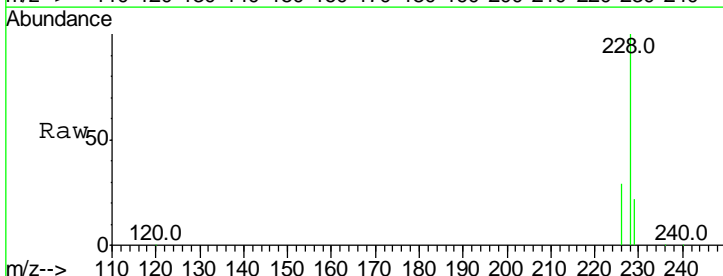
Manual Integrations
APPROVED
 Mmdadoda
 11/6/2015 3:45:23 PM

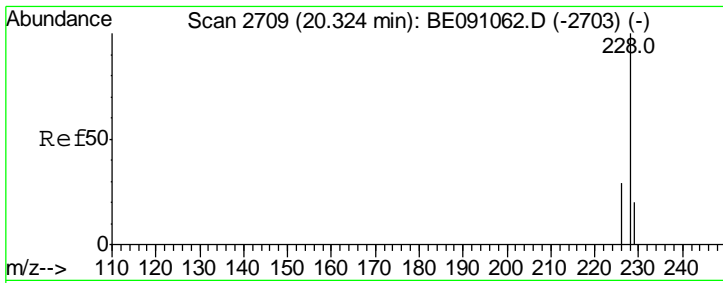


#20
 Benzo(a)anthracene
 Concen: 7.67 ng/ul
 RT: 20.26 min Scan# 2695
 Delta R.T. 0.00 min
 Lab File: BE091071.D
 Acq: 5 Nov 2015 17:49

Tgt Ion: 228 Resp: 616301

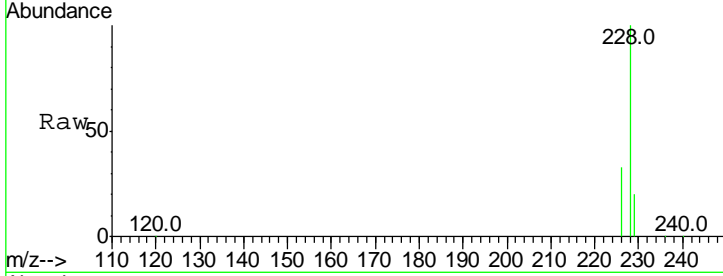
Ion	Ratio	Lower	Upper
228	100		
226	28.9	23.0	34.4
229	21.6	15.2	22.8





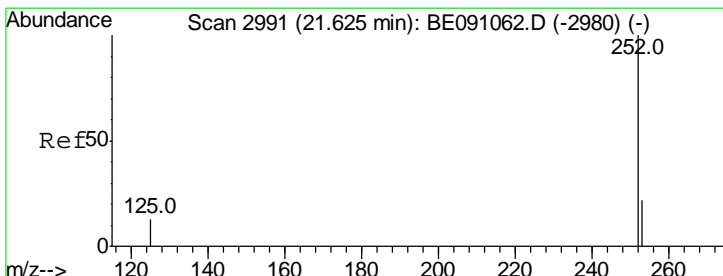
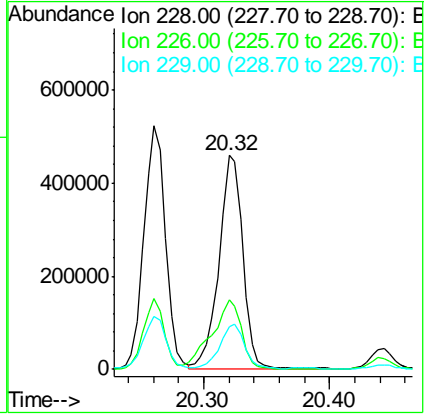
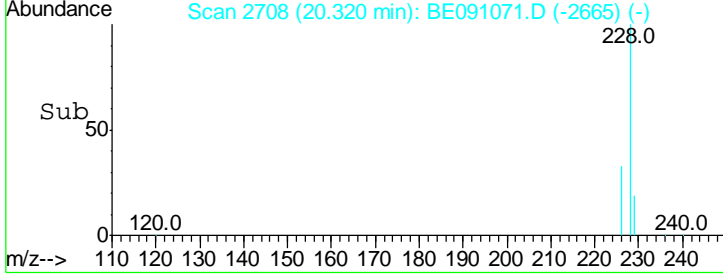
#21
 Chrysene
 Concen: 6.47 ng/ul
 RT: 20.32 min Scan# 2708
 Delta R.T. -0.00 min
 Lab File: BE091071.D
 Acq: 5 Nov 2015 17:49

Instrument :
 BNA_E
 ClientSampled :
 C0AP4



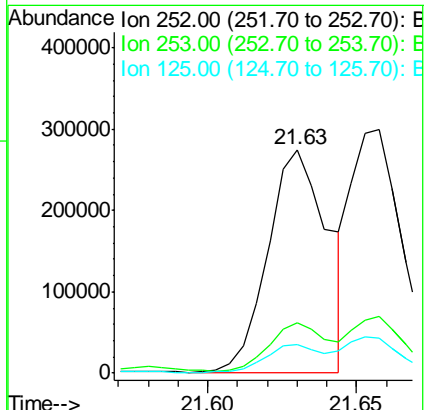
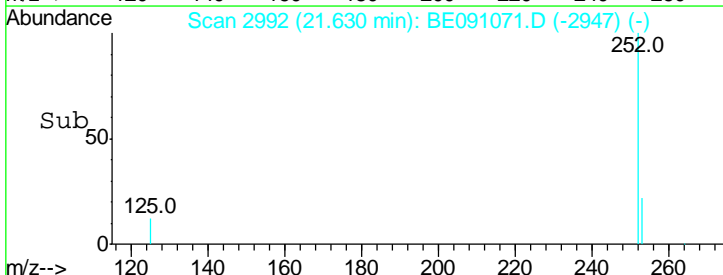
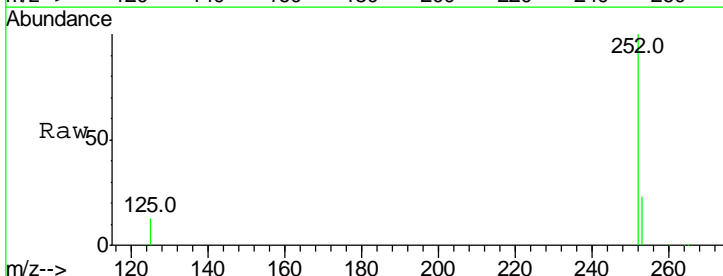
Tgt Ion	Resp	Lower	Upper
228	100		
226	32.7	25.7	38.5
229	20.0	15.2	22.8

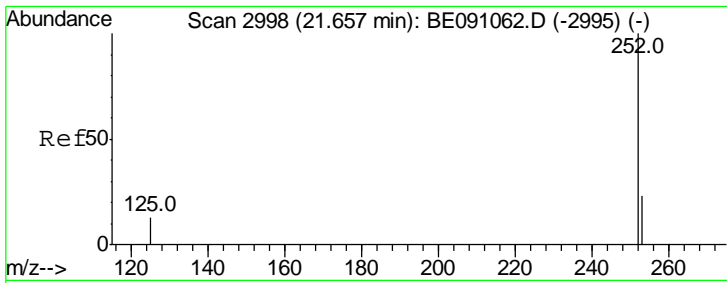
Manual Integrations
 APPROVED
 Mmdadoda
 11/6/2015 3:45:23 PM



#23
 Benzo(b)fluoranthene
 Concen: 3.01 ng/ul
 RT: 21.63 min Scan# 2992
 Delta R.T. 0.00 min
 Lab File: BE091071.D
 Acq: 5 Nov 2015 17:49

Tgt Ion	Resp	Lower	Upper
252	100		
253	22.6	0.0	48.0
125	12.9	0.0	36.6



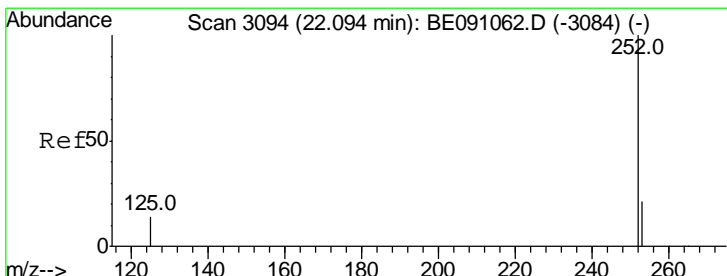
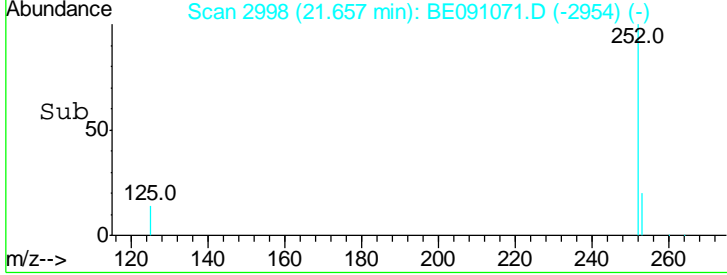
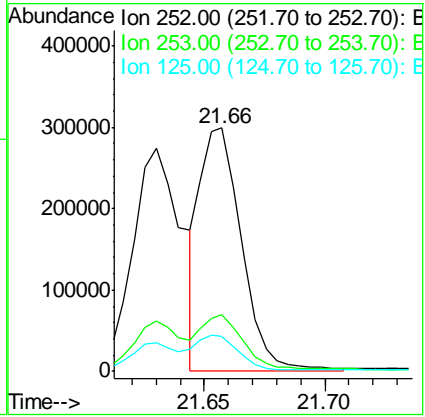
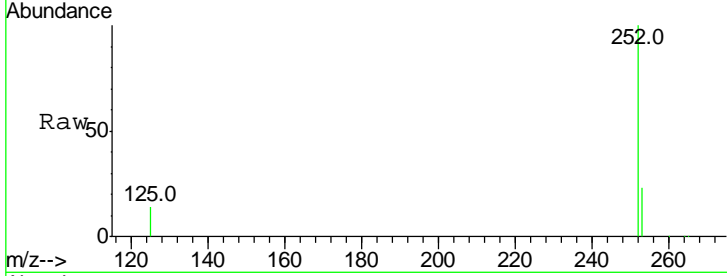


#24
 Benzo(k)fluoranthene
 Concen: 2.81 ng/ul m
 RT: 21.66 min Scan# 2998
 Delta R.T. 0.00 min
 Lab File: BE091071.D
 Acq: 5 Nov 2015 17:49

Instrument :
 BNA_E
 ClientSampled :
 C0AP4

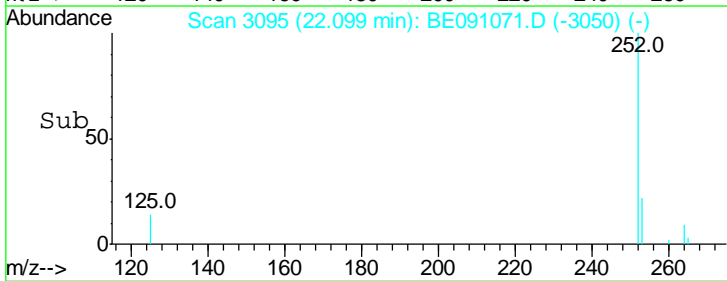
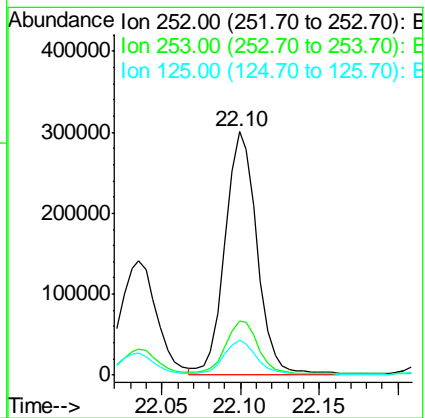
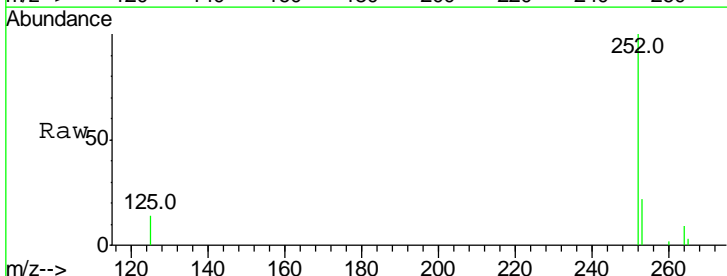
Tgt Ion	Resp	Lower	Upper
252	100		
253	23.2	20.8	31.2
125	14.2	12.2	18.4

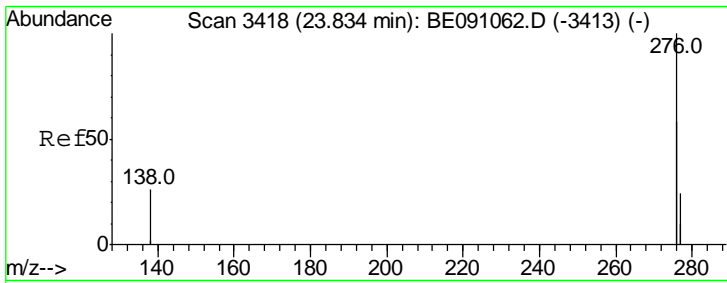
Manual Integrations
 APPROVED
 Mmddadoda
 11/6/2015 3:45:23 PM



#25
 Benzo(a)pyrene
 Concen: 3.69 ng/ul m
 RT: 22.10 min Scan# 3095
 Delta R.T. 0.00 min
 Lab File: BE091071.D
 Acq: 5 Nov 2015 17:49

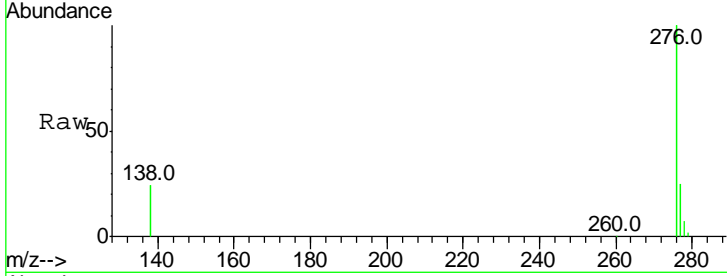
Tgt Ion	Resp	Lower	Upper
252	100		
253	22.3	21.8	32.8
125	14.4	14.5	21.7#





#26
 Indeno(1,2,3-cd)pyrene
 Concen: 1.71 ng/ul m
 RT: 23.84 min Scan# 3418
 Delta R.T. 0.00 min
 Lab File: BE091071.D
 Acq: 5 Nov 2015 17:49

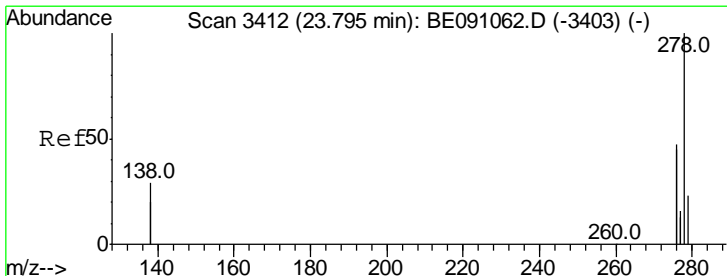
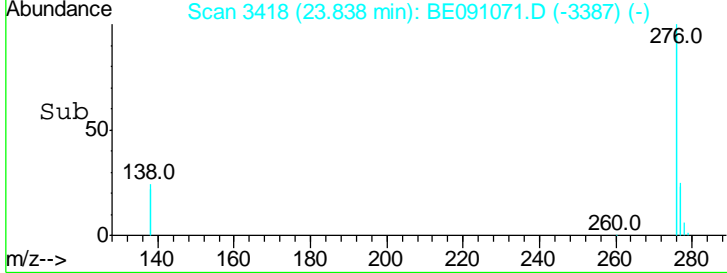
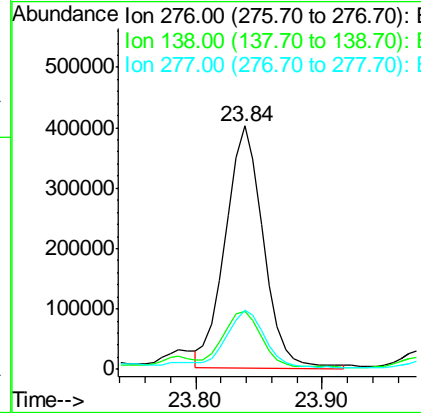
Instrument :
 BNA_E
ClientSampled :
 C0AP4



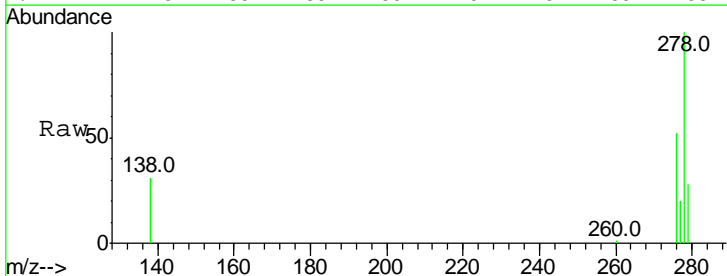
Tgt Ion: 276 Resp: 836942

Ion	Ratio	Lower	Upper
276	100		
138	5.0	27.5	41.3#
277	5.2	19.3	28.9#

Manual Integrations
APPROVED
 Mmddadoda
 11/6/2015 3:45:23 PM

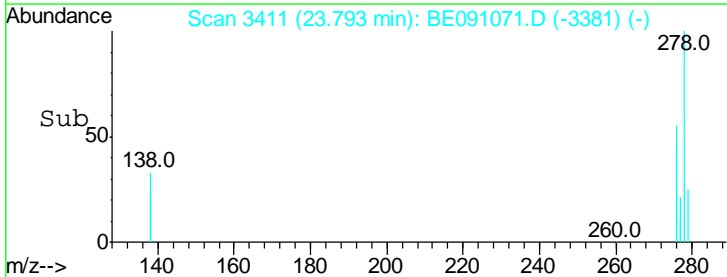
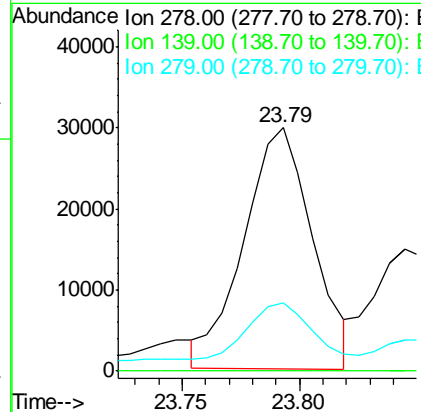


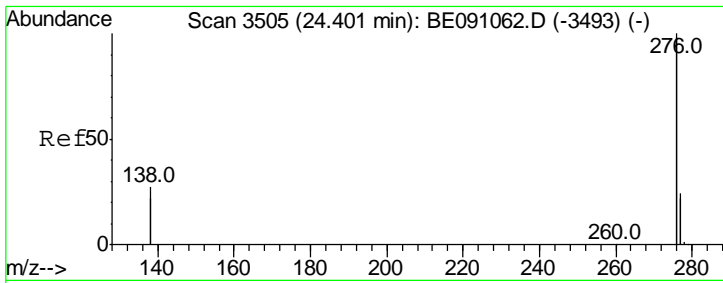
#27
 Dibenzo(a,h)anthracene
 Concen: 0.52 ng/ul m
 RT: 23.79 min Scan# 3411
 Delta R.T. -0.00 min
 Lab File: BE091071.D
 Acq: 5 Nov 2015 17:49



Tgt Ion: 278 Resp: 61157

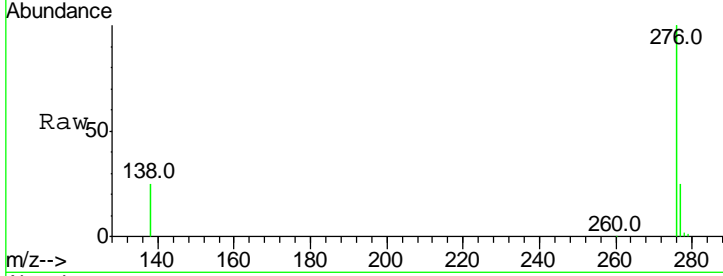
Ion	Ratio	Lower	Upper
278	100		
139	0.0	21.7	32.5#
279	28.2	21.9	32.9





#28
 Benzo(a,h,i)perylene
 Concen: 1.29 ng/ul m
 RT: 24.41 min Scan# 3505
 Delta R.T. 0.00 min
 Lab File: BE091071.D
 Acq: 5 Nov 2015 17:49

Instrument :
 BNA_E
ClientSampled :
 COAP4



Tot Ion: 276 Resp: 661131

Ion	Ratio	Lower	Upper
276	100		
277	25.0	21.3	31.9
138	25.0	25.5	38.3#

Manual Integrations
APPROVED
 Mmdadoda
 11/6/2015 3:45:23 PM

