

Data Path : Z:\HPCHEM1\BNA E\DATA\BE110917\
 Data File : BE094792.D
 Acq On : 8 Nov 2017 20:41
 Operator : SJ/JU
 Sample : I6328-05
 Misc :
 ALS Vial : 10 Sample Multiplier: 1

Instrument :
 BNA_E
 ClientSampleId :
 FB110217

Quant Time: Nov 09 00:22:26 2017
 Quant Method : Z:\HPCHEM1\BNA E\METHODS\8270-SIM-BE102317.M
 Quant Title : ASP BNA STANDARDS FOR 5 POINT CALIBRATION
 QLast Update : Mon Oct 23 22:40:47 2017
 Response via : Initial Calibration

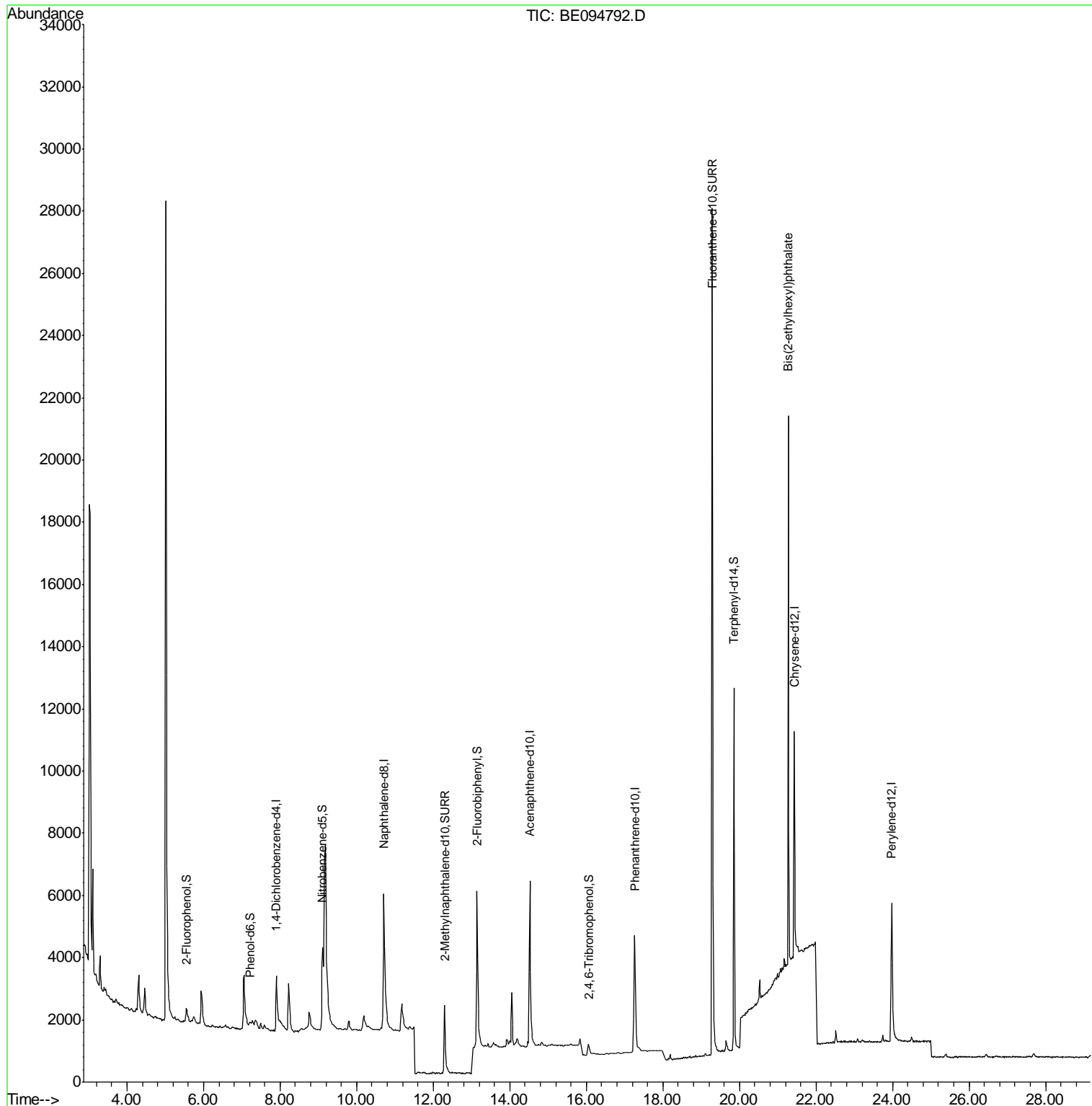
Internal Standards	R.T.	QIon	Response	Conc	Units	Dev(Min)
1) 1,4-Dichlorobenzene-d4	7.90	152	1319	0.40	ng	0.00
7) Naphthalene-d8	10.71	136	7768	0.40	ng	0.00
13) Acenaphthene-d10	14.53	164	4341	0.40	ng	0.02
19) Phenanthrene-d10	17.27	188	8953	0.40	ng	0.03
27) Chrysene-d12	21.44	240	9698	0.40	ng	0.01
34) Perylene-d12	23.98	264	8534	0.40	ng	0.02
System Monitoring Compounds						
4) 2-Fluorophenol	5.56	112	652	0.14	ng	0.04
5) Phenol-d6	7.22	99	400	0.06	ng	0.09
8) Nitrobenzene-d5	9.11	82	2264	0.37	ng	0.03
11) 2-Methylnaphthalene-d10	12.29	152	4683	0.38	ng	0.00
14) 2,4,6-Tribromophenol	16.06	330	458	0.38	ng	0.03
15) 2-Fluorobiphenyl	13.15	172	6961	0.45	ng	0.00
25) Fluoranthene-d10	19.29	212	45688	0.42	ng	0.00
29) Terphenyl-d14	19.86	244	11046	0.60	ng	0.00
Target Compounds						
23) Phenanthrene	17.30	178	442	Below Cal	#	94
26) Fluoranthene	19.32	202	186	Below Cal	#	83
32) Bis(2-ethylhexyl)phthalate	21.28	149	19399	0.25	ng	99

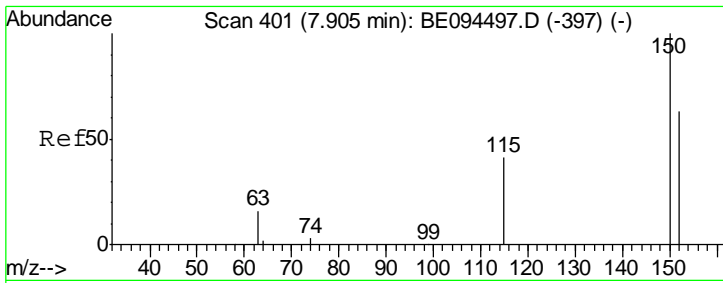
(#) = qualifier out of range (m) = manual integration (+) = signals summed

Data Path : Z:\HPCHEM1\BNA E\DATA\BE110917\
 Data File : BE094792.D
 Acq On : 8 Nov 2017 20:41
 Operator : SJ/JU
 Sample : I6328-05
 Misc :
 ALS Vial : 10 Sample Multiplier: 1

Instrument :
 BNA_E
 ClientSampleId :
 FB110217

Quant Time: Nov 09 00:22:26 2017
 Quant Method : Z:\HPCHEM1\BNA E\METHODS\8270-SIM-BE102317.M
 Quant Title : ASP BNA STANDARDS FOR 5 POINT CALIBRATION
 QLast Update : Mon Oct 23 22:40:47 2017
 Response via : Initial Calibration

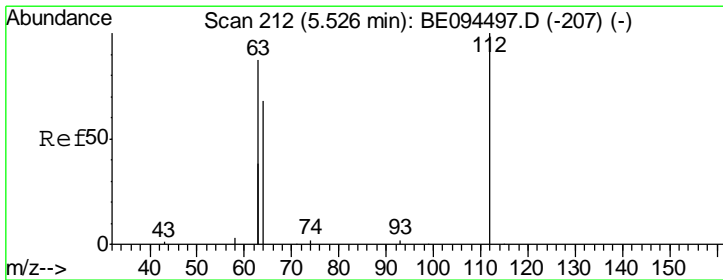
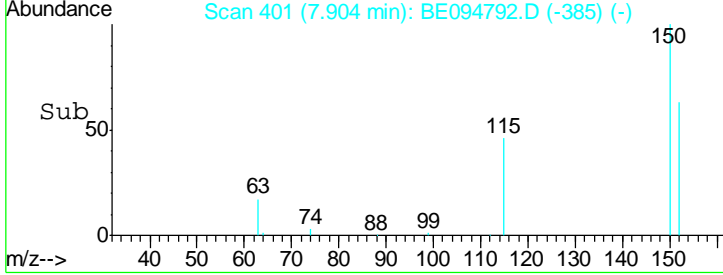
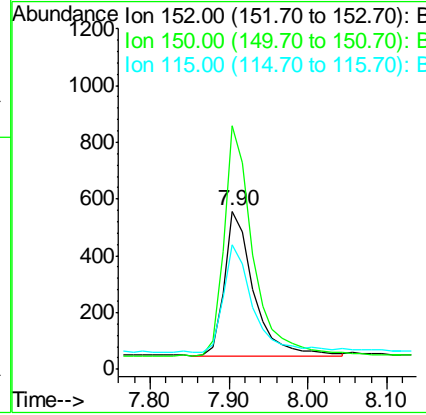
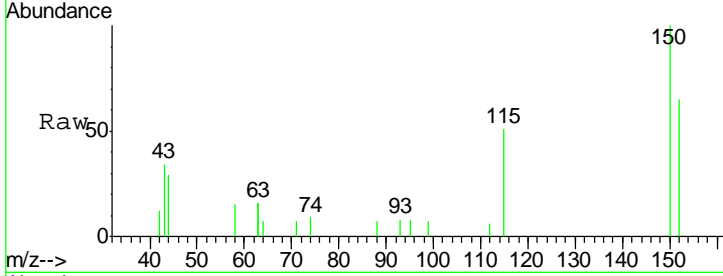




#1
 1,4-Dichlorobenzene-d4
 Concen: 0.40 ng
 RT: 7.90 min Scan# 401
 Delta R.T. -0.00 min
 Lab File: BE094792.D
 Acq: 8 Nov 2017 20:41

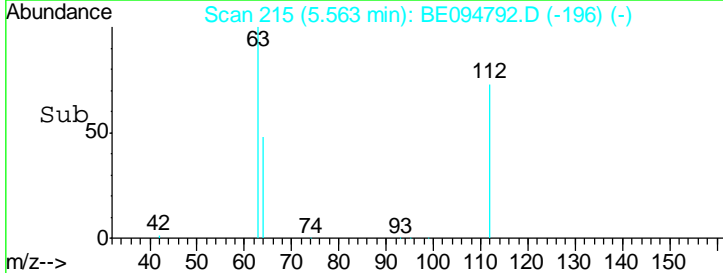
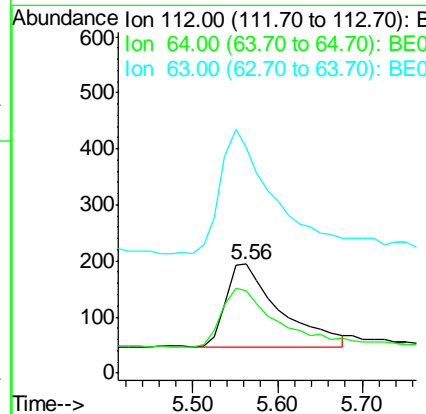
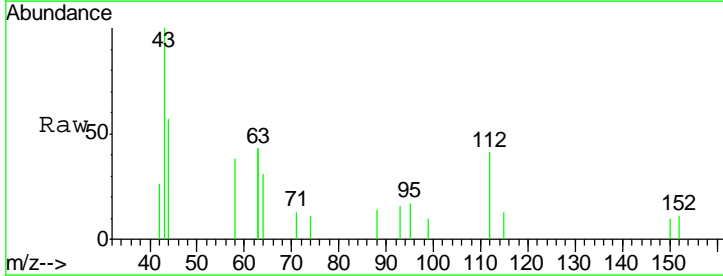
Instrument :
 BNA_E
 ClientSampleID :
 FB110217

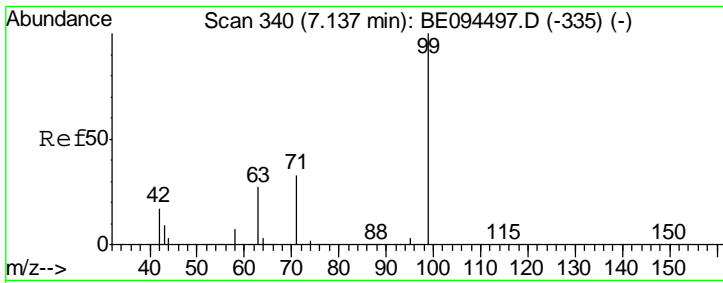
Tgt Ion	Resp	Lower	Upper
152	1319		
150	153.8	117.2	175.8
115	78.3	57.0	85.6



#4
 2-Fluorophenol
 Concen: 0.14 ng
 RT: 5.56 min Scan# 215
 Delta R.T. 0.04 min
 Lab File: BE094792.D
 Acq: 8 Nov 2017 20:41

Tgt Ion	Resp	Lower	Upper
112	652		
64	71.8	60.1	90.1
63	146.9	116.8	175.2

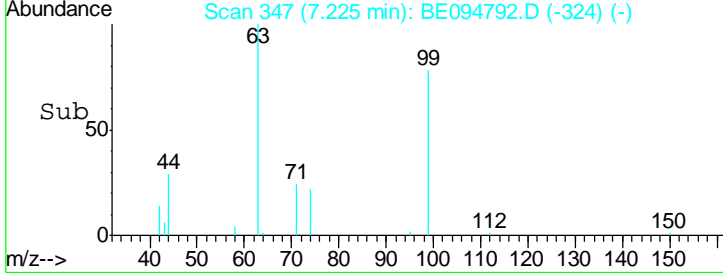
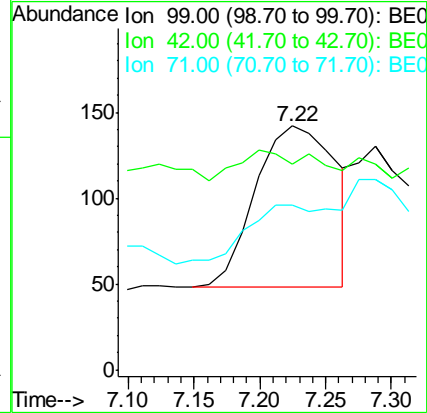
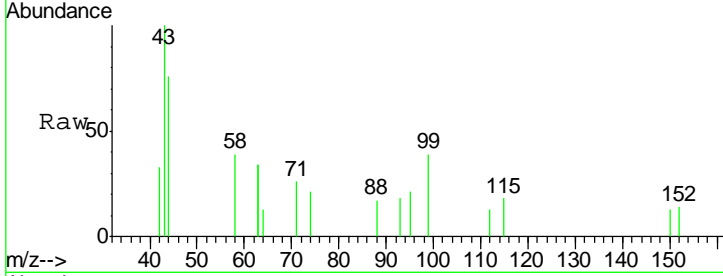




#5
 Phenol-d6
 Concen: 0.06 ng
 RT: 7.22 min Scan# 347
 Delta R.T. 0.09 min
 Lab File: BE094792.D
 Acq: 8 Nov 2017 20:41

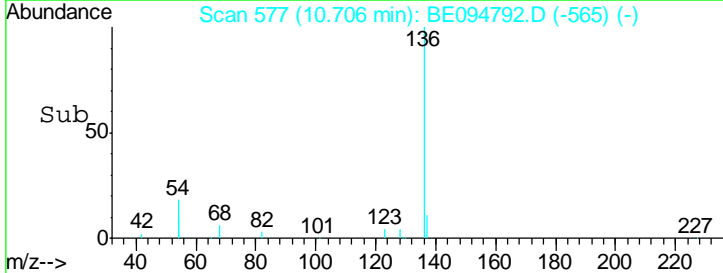
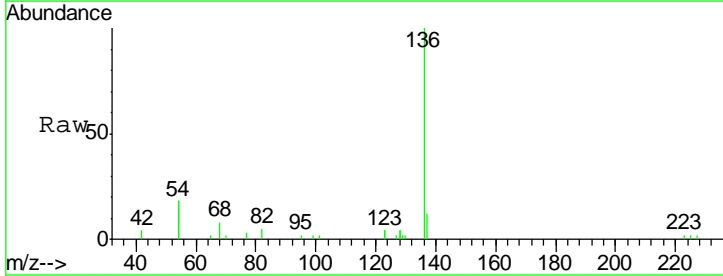
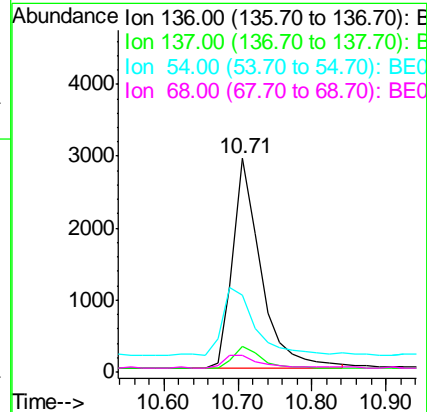
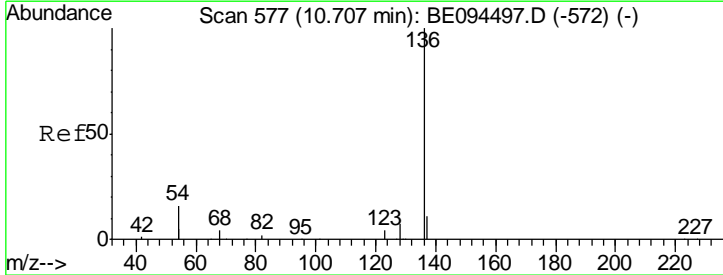
Instrument :
 BNA_E
 ClientSampled :
 FB110217

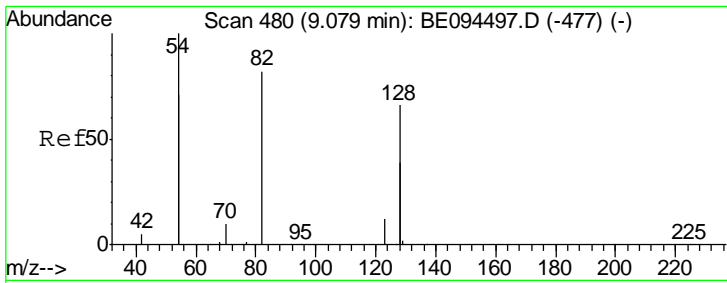
Tgt Ion	Resp	Lower	Upper
99	400		
42	0.0	20.2	30.2#
71	28.7	28.4	42.6



#7
 Naphthalene-d8
 Concen: 0.40 ng
 RT: 10.71 min Scan# 577
 Delta R.T. -0.00 min
 Lab File: BE094792.D
 Acq: 8 Nov 2017 20:41

Tgt Ion	Resp	Lower	Upper
136	7768		
137	12.3	9.5	14.3
54	35.8	29.1	43.7
68	7.7	6.2	9.2

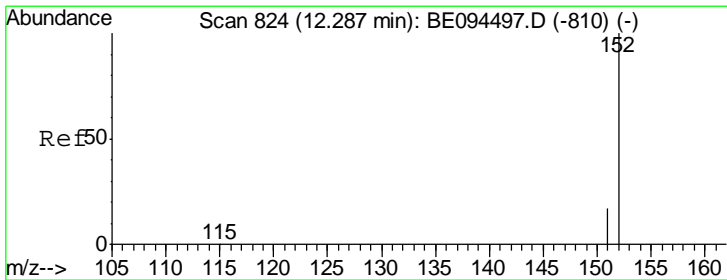
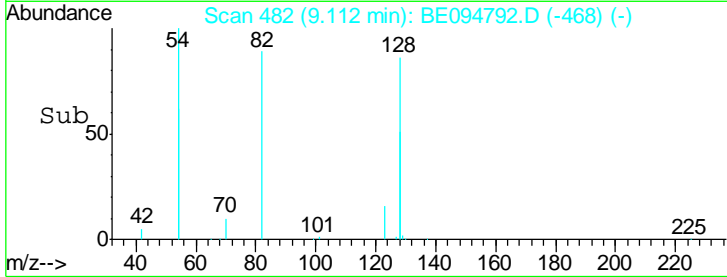
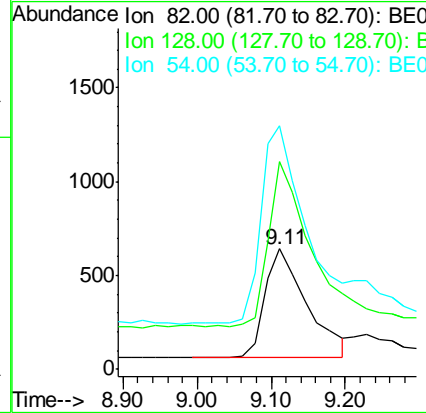
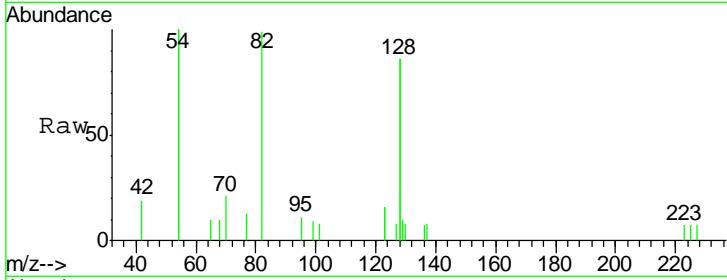




#8
 Nitrobenzene-d5
 Concen: 0.37 ng
 RT: 9.11 min Scan# 482
 Delta R.T. 0.03 min
 Lab File: BE094792.D
 Acq: 8 Nov 2017 20:41

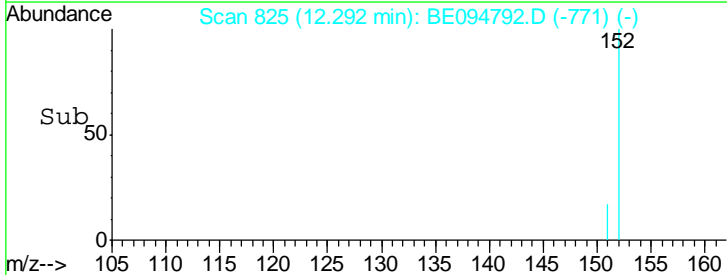
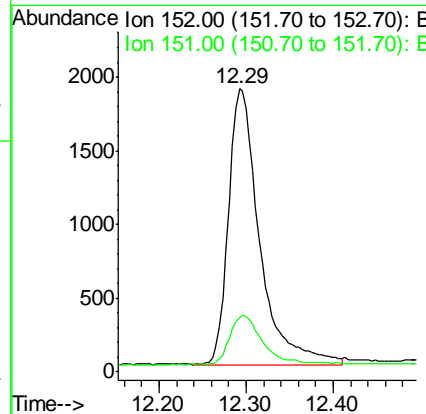
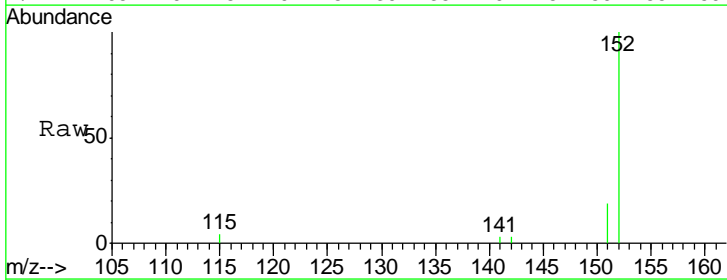
Instrument :
 BNA_E
 ClientSampled :
 FB110217

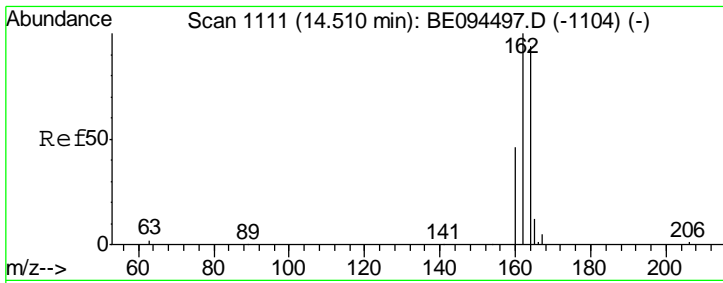
Tgt Ion	Resp	Lower	Upper
82	100		
128	173.2	150.0	225.0
54	202.5	154.2	231.4



#11
 2-Methylnaphthalene-d10
 Concen: 0.38 ng
 RT: 12.29 min Scan# 825
 Delta R.T. 0.00 min
 Lab File: BE094792.D
 Acq: 8 Nov 2017 20:41

Tgt Ion	Resp	Lower	Upper
152	100		
151	18.9	15.4	23.0

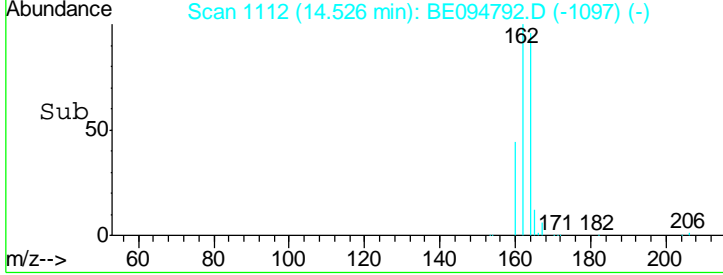
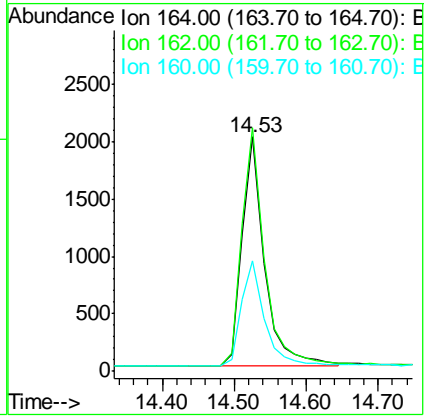
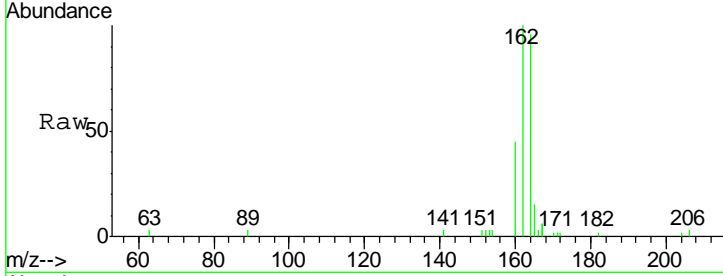




#13
 Acenaphthene-d10
 Concen: 0.40 ng
 RT: 14.53 min Scan# 1112
 Delta R.T. 0.02 min
 Lab File: BE094792.D
 Acq: 8 Nov 2017 20:41

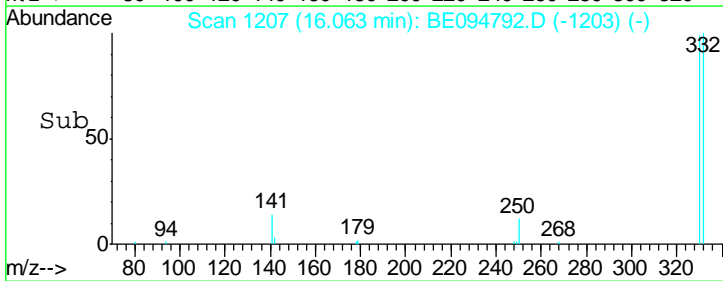
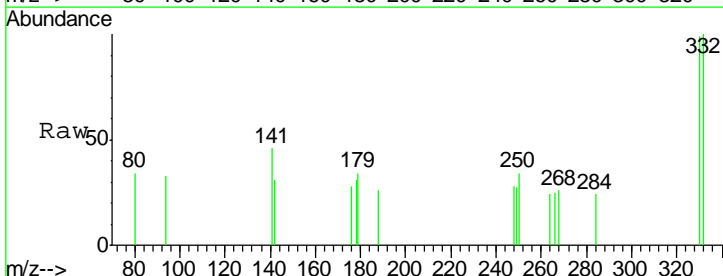
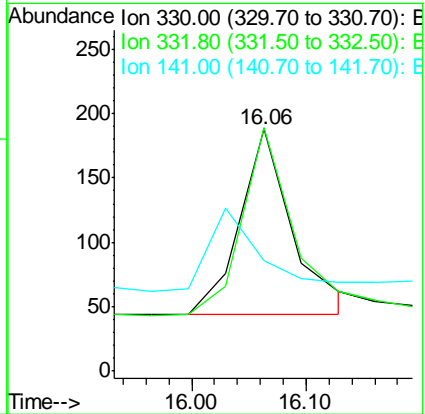
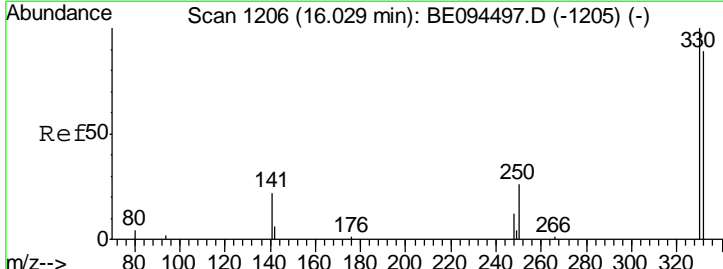
Instrument :
 BNA_E
 ClientSampled :
 FB110217

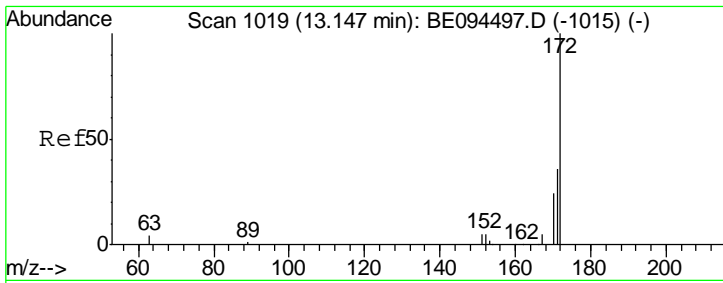
Tgt Ion	Resp	Lower	Upper
164	100		
162	103.8	83.1	124.7
160	46.9	37.1	55.7



#14
 2,4,6-Tribromophenol
 Concen: 0.38 ng
 RT: 16.06 min Scan# 1207
 Delta R.T. 0.03 min
 Lab File: BE094792.D
 Acq: 8 Nov 2017 20:41

Tgt Ion	Resp	Lower	Upper
330	100		
332	97.8	152.7	229.1#
141	0.0	33.7	50.5#

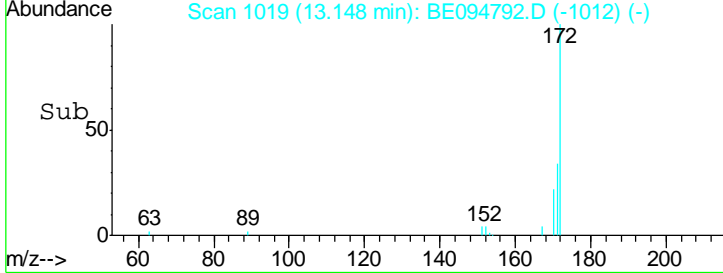
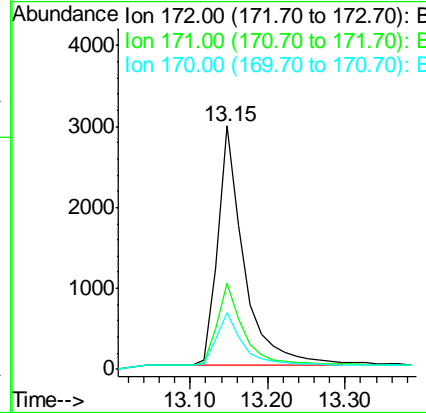
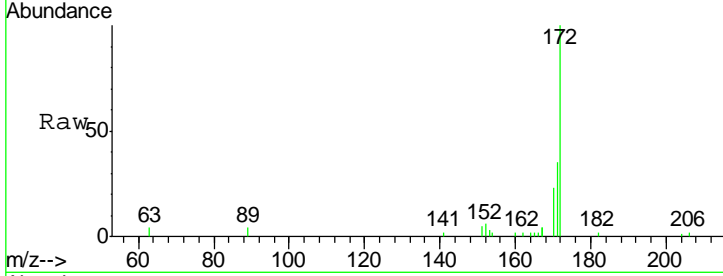




#15
 2-Fluorobiphenyl
 Concen: 0.45 ng
 RT: 13.15 min Scan# 1019
 Delta R.T. 0.00 min
 Lab File: BE094792.D
 Acq: 8 Nov 2017 20:41

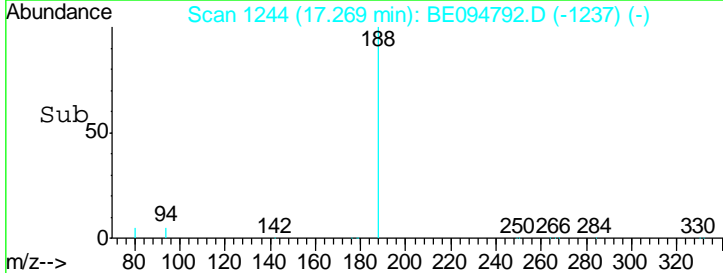
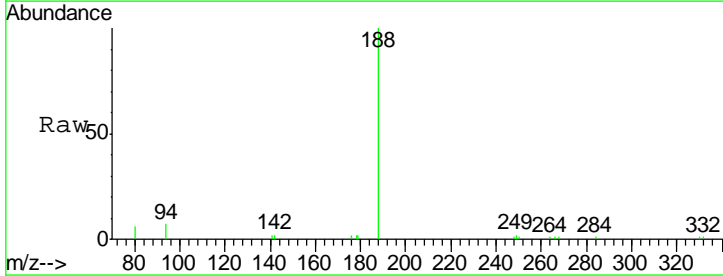
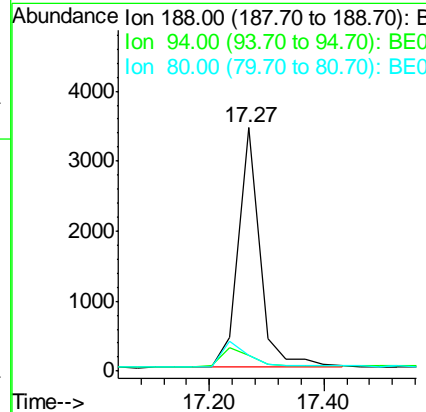
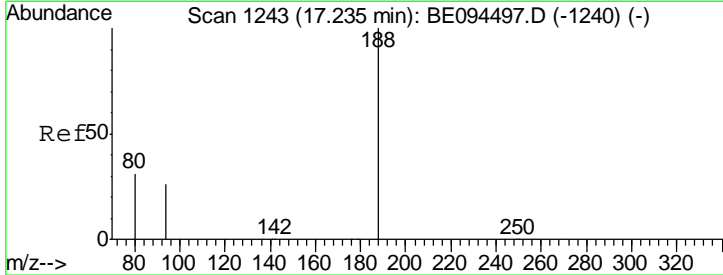
Instrument :
 BNA_E
 ClientSampled :
 FB110217

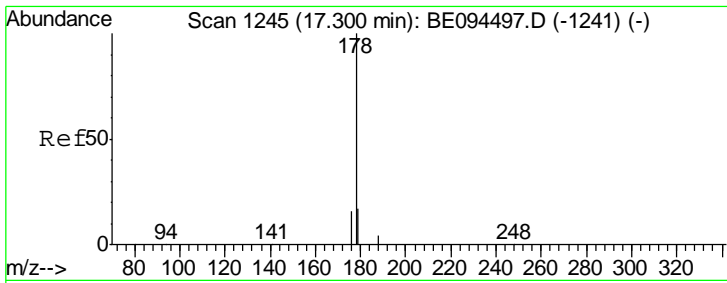
Tgt Ion	Resp	Lower	Upper
172	6961		
171	35.2	29.9	44.9
170	23.2	21.8	32.8



#19
 Phenanthrene-d10
 Concen: 0.40 ng
 RT: 17.27 min Scan# 1244
 Delta R.T. 0.03 min
 Lab File: BE094792.D
 Acq: 8 Nov 2017 20:41

Tgt Ion	Resp	Lower	Upper
188	8953		
94	6.6	3.9	5.9#
80	6.4	3.6	5.4#

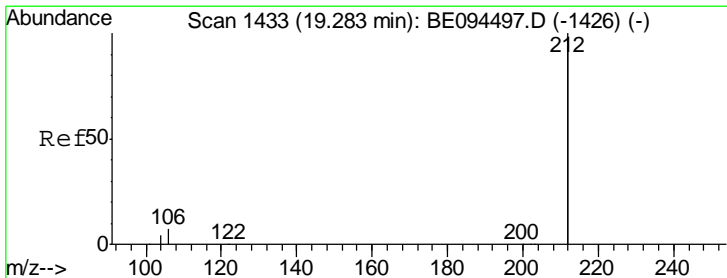
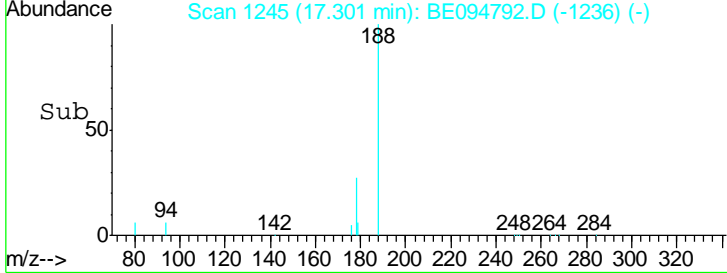
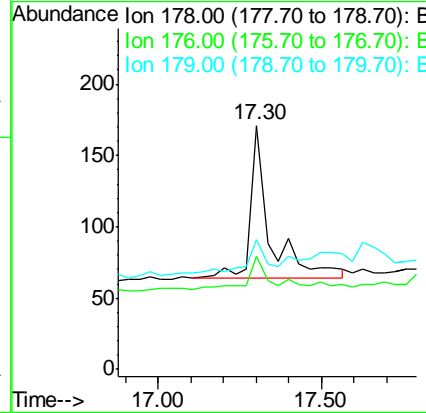
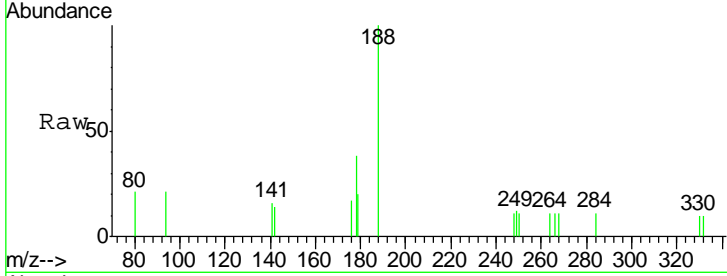




#23
 Phenanthrene
 Concen: Below Cal
 RT: 17.30 min Scan# 1245
 Delta R.T. 0.00 min
 Lab File: BE094792.D
 Acq: 8 Nov 2017 20:41

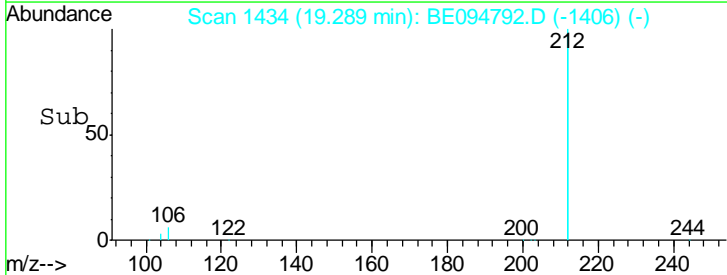
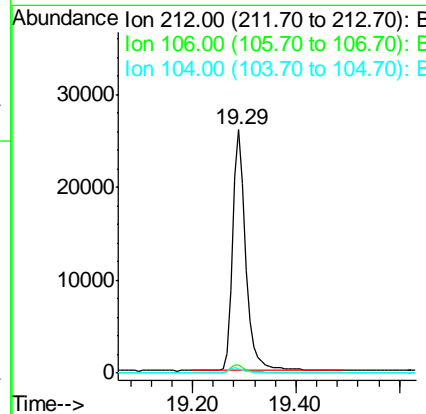
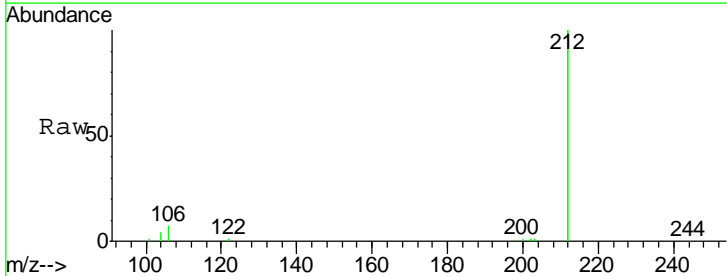
Instrument :
 BNA_E
 ClientSampled :
 FB110217

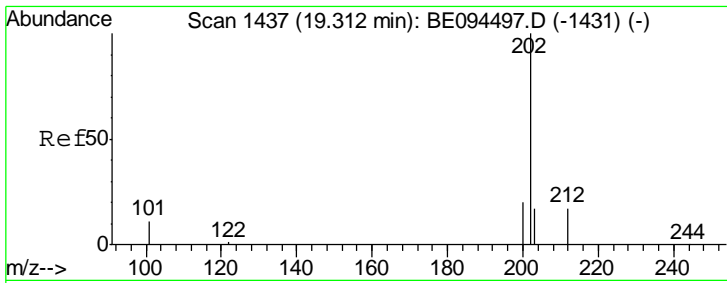
Tgt Ion	Resp	Lower	Upper
178	100		
176	19.9	15.1	22.7
179	19.5	11.8	17.6



#25
 Fluoranthene-d10
 Concen: 0.42 ng
 RT: 19.29 min Scan# 1434
 Delta R.T. 0.01 min
 Lab File: BE094792.D
 Acq: 8 Nov 2017 20:41

Tgt Ion	Resp	Lower	Upper
212	100		
106	3.3	2.8	4.2
104	1.9	1.6	2.4

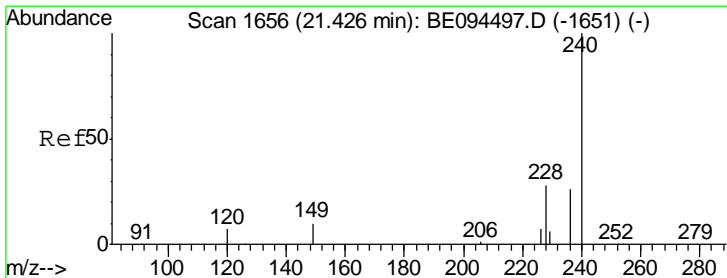
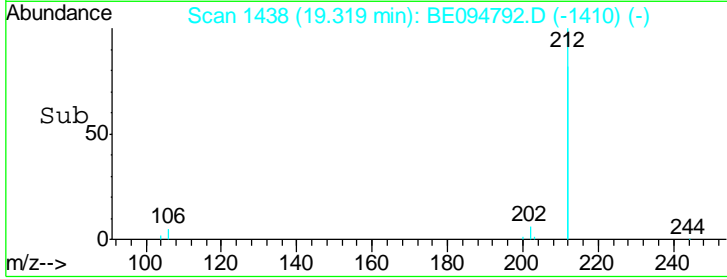
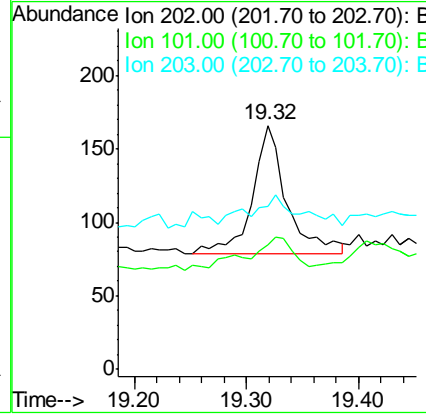
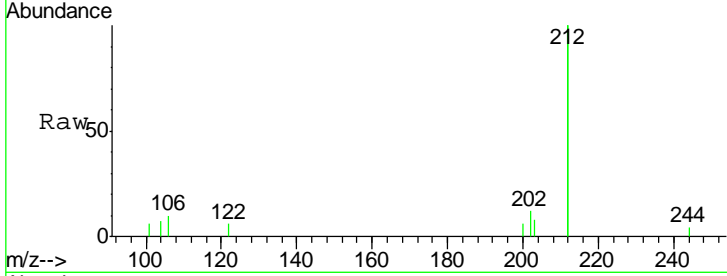




#26
 Fluoranthene
 Concen: Below Cal
 RT: 19.32 min Scan# 1438
 Delta R.T. 0.01 min
 Lab File: BE094792.D
 Acq: 8 Nov 2017 20:41

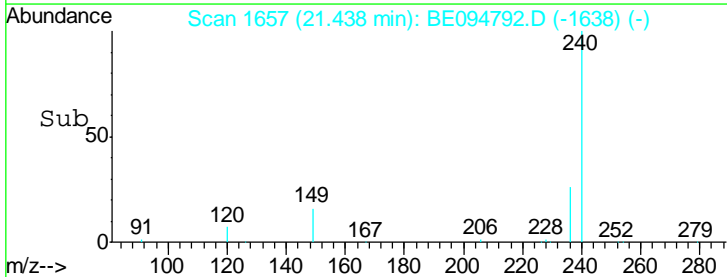
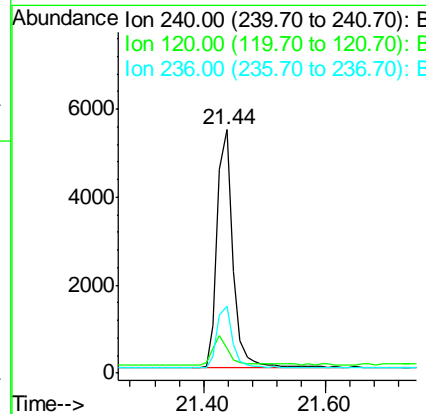
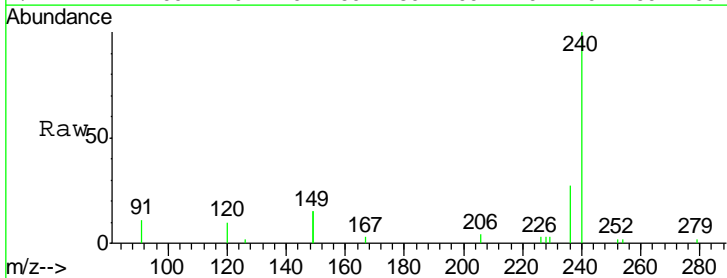
Instrument :
 BNA_E
 ClientSampled :
 FB110217

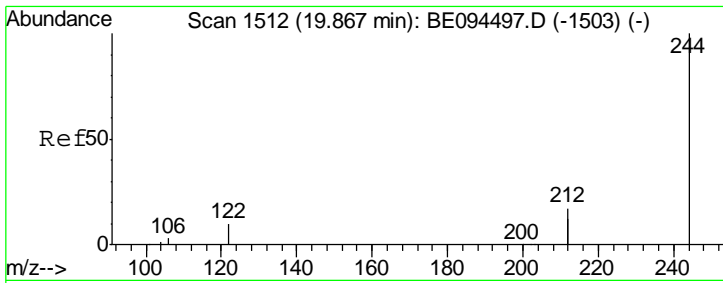
Tgt Ion	Resp	Lower	Upper
202	186		
101	18.8	9.8	14.8#
203	24.7	13.7	20.5#



#27
 Chrysene-d12
 Concen: 0.40 ng
 RT: 21.44 min Scan# 1657
 Delta R.T. 0.01 min
 Lab File: BE094792.D
 Acq: 8 Nov 2017 20:41

Tgt Ion	Resp	Lower	Upper
240	9698		
120	10.3	5.5	8.3#
236	27.5	20.7	31.1

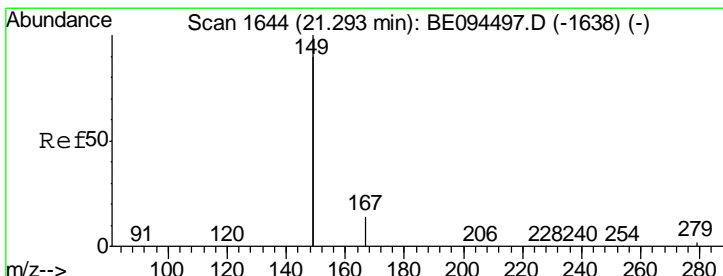
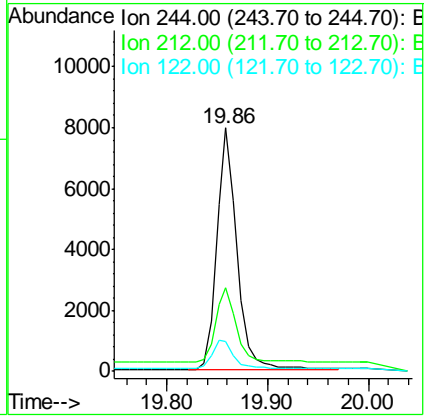
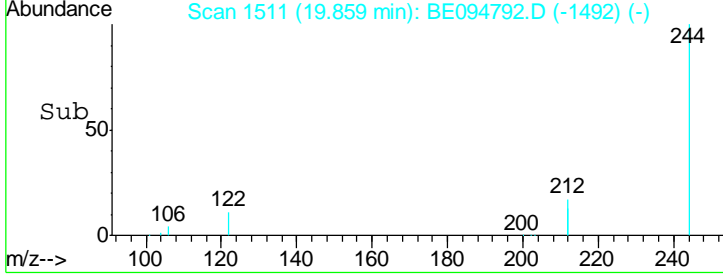
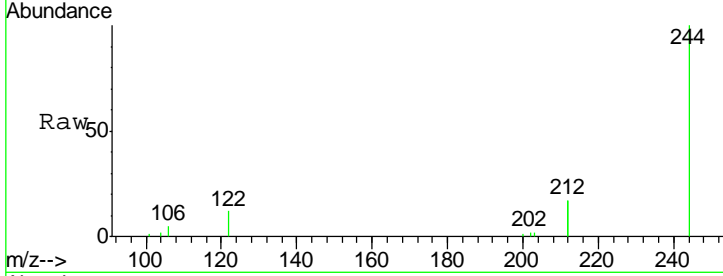




#29
 Terphenyl-d14
 Concen: 0.60 ng
 RT: 19.86 min Scan# 1511
 Delta R.T. -0.01 min
 Lab File: BE094792.D
 Acq: 8 Nov 2017 20:41

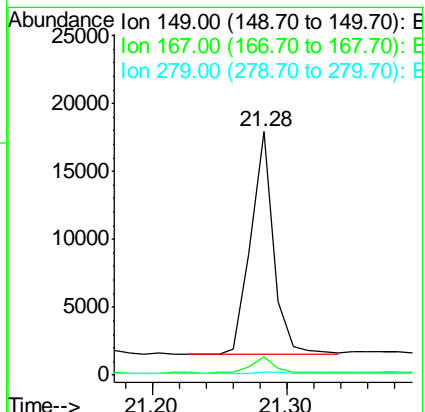
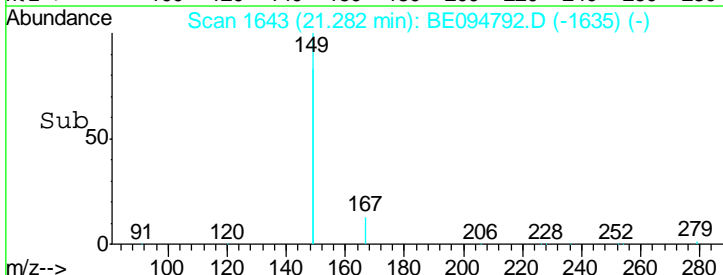
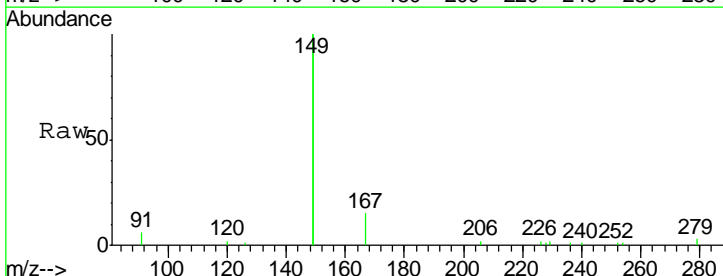
Instrument :
 BNA_E
 ClientSampled :
 FB110217

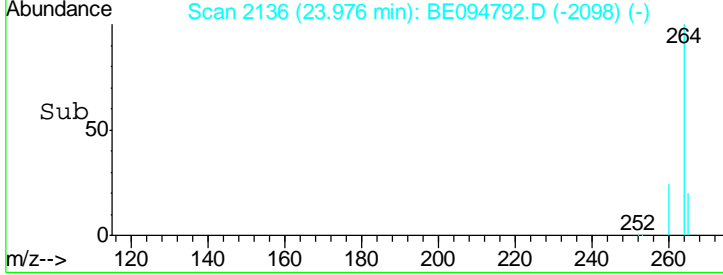
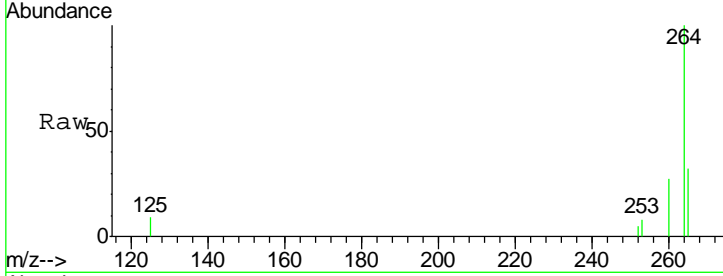
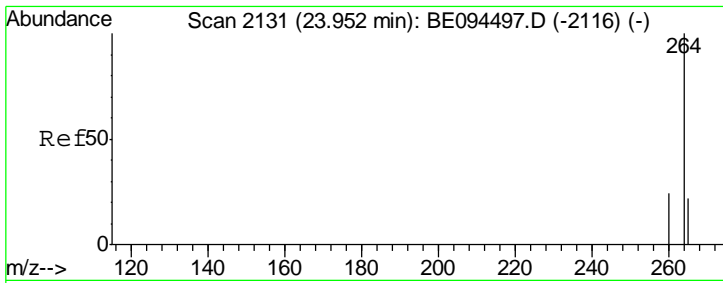
Tgt Ion	Resp	Lower	Upper
244	11046		
212	34.4	25.4	38.0
122	12.0	8.1	12.1



#32
 Bis(2-ethylhexyl)phthalate
 Concen: 0.25 ng
 RT: 21.28 min Scan# 1643
 Delta R.T. -0.01 min
 Lab File: BE094792.D
 Acq: 8 Nov 2017 20:41

Tgt Ion	Resp	Lower	Upper
149	19399		
167	7.0	5.4	8.0
279	1.0	0.7	1.1





#34
 Perylene-d12
 Concen: 0.40 ng
 RT: 23.98 min Scan# 2136
 Delta R.T. 0.02 min
 Lab File: BE094792.D
 Acq: 8 Nov 2017 20:41

Instrument :
 BNA_E
 ClientSampled :
 FB110217

Tot Ion: 264 Resp: 8534

Ion	Ratio	Lower	Upper
264	100		
260	26.5	20.5	30.7
265	31.8	22.8	34.2

