

Data Path : Z:\HPCHEM1\BNA E\DATA\BE111315\
 Data File : BE091155.D
 Acq On : 13 Nov 2015 23:45
 Operator : UM/NP
 Sample : G4342-03
 Misc :
 ALS Vial : 5 Sample Multiplier: 1

Instrument :
 BNA_E
ClientSampleId :
 D9KP0

Manual Integrations
APPROVED
 mmdadoda
 11/16/2015 3:24:21 PM

Quant Time: Nov 16 10:50:15 2015
 Quant Method : Z:\HPCHEM1\BNA E\METHODS\SOM02.2-EPA-SIM-BE102715.M
 Quant Title : ASP BNA STANDARDS FOR 5 POINT CALIBRATION
 QLast Update : Sat Nov 14 04:34:12 2015
 Response via : Initial Calibration

Internal Standards	R.T.	QIon	Response	Conc	Units	Dev(Min)
1) 1,4-Dichlorobenzene-d4	6.89	152	4955	0.40	ng/ul	-0.07
4) Naphthalene-d8	9.57	136	22433	0.40	ng/ul	-0.04
8) Acenaphthene-d10	13.38	164	15823	0.40	ng/ul	-0.02
12) Phenanthrene-d10	16.10	188	55854	0.40	ng/ul	-0.01
18) Chrysene-d12	20.24	240	90036	0.40	ng/ul	0.00
22) Perylene-d12	22.13	264	81694m	0.40	ng/ul	0.00
System Monitoring Compounds						
2) 1,4-Dioxane-d8	3.08	96	20566	5.77	ng/uL	-0.07
6) 2-Methylnaphthalene-d10	11.10	152	6240	0.20	ng/ul	-0.02
16) Fluoranthene-d10	18.09	212	18877	0.12	ng/ul	0.00
Target Compounds						
						Ovalue
17) Fluoranthene	18.11	202	29326	0.04	ng/ul	86
19) Pyrene	18.49	202	37725	0.04	ng/ul#	74

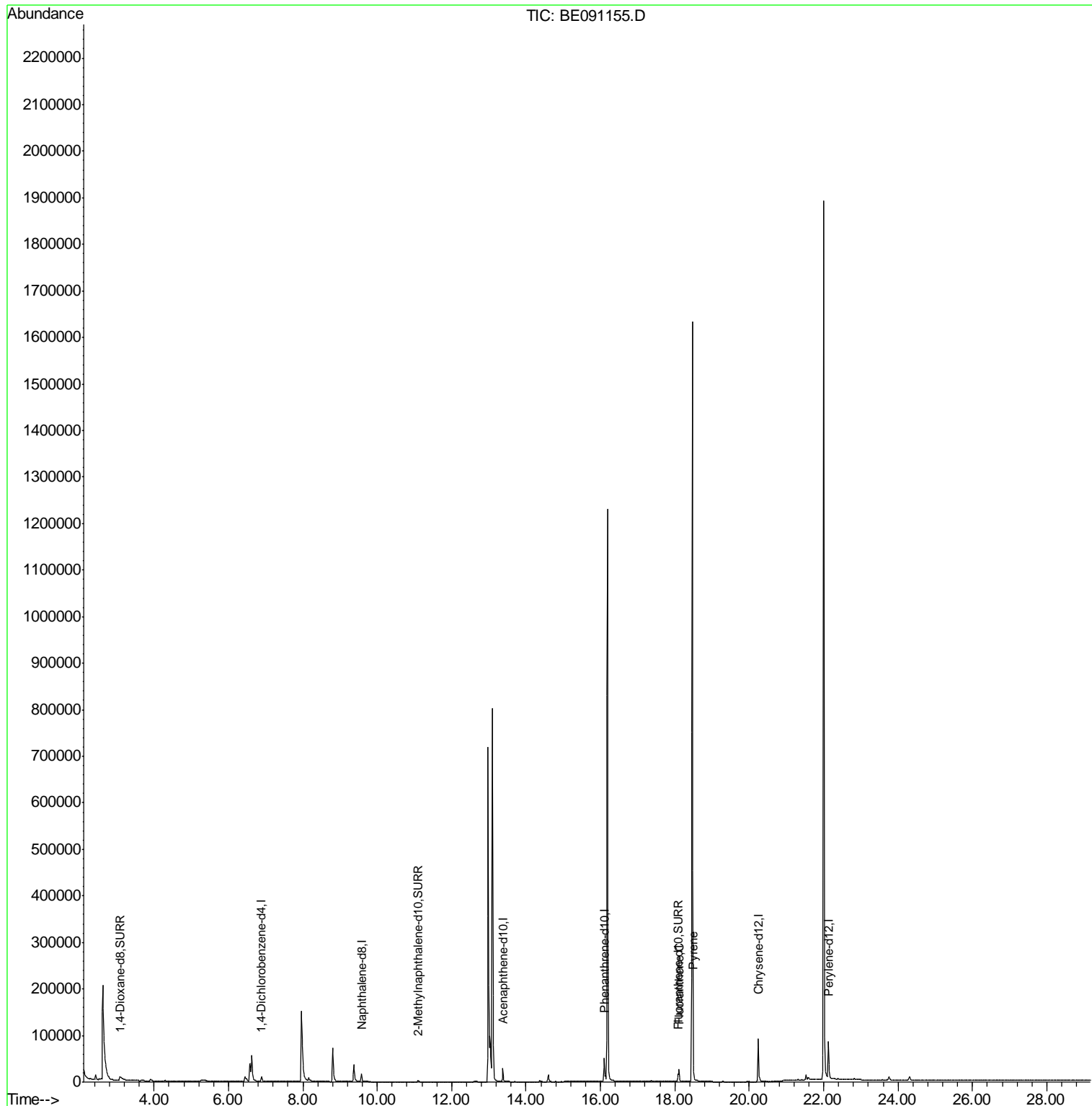
(#) = qualifier out of range (m) = manual integration (+) = signals summed

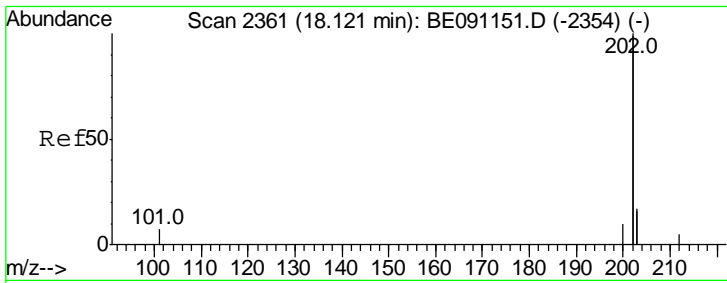
Data Path : Z:\HPCHEM1\BNA E\DATA\BE111315\
 Data File : BE091155.D
 Acq On : 13 Nov 2015 23:45
 Operator : UM/NP
 Sample : G4342-03
 Misc :
 ALS Vial : 5 Sample Multiplier: 1

Instrument :
 BNA_E
ClientSampleId :
 D9KP0

Manual Integrations
APPROVED
 mmdadoda
 11/16/2015 3:24:21 PM

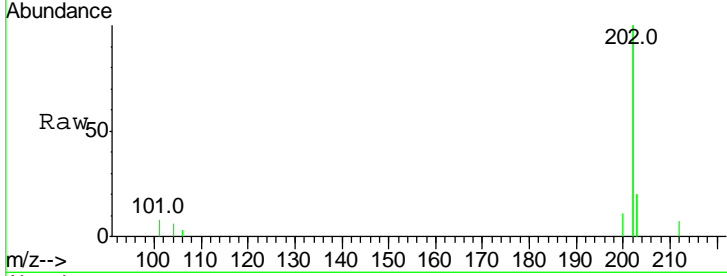
Quant Time: Nov 16 10:50:15 2015
 Quant Method : Z:\HPCHEM1\BNA E\METHODS\SOM02.2-EPA-SIM-BE102715.M
 Quant Title : ASP BNA STANDARDS FOR 5 POINT CALIBRATION
 QLast Update : Sat Nov 14 04:34:12 2015
 Response via : Initial Calibration





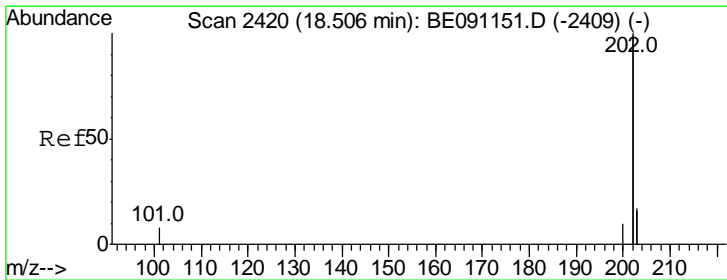
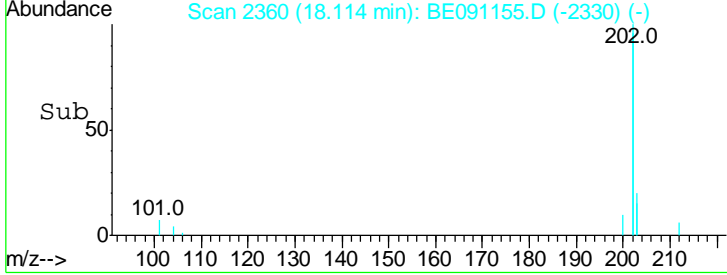
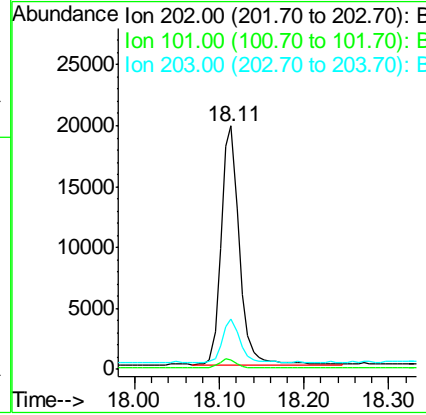
#17
 Fluoranthene
 Concen: 0.04 ng/ul
 RT: 18.11 min Scan# 2360
 Delta R.T. -0.01 min
 Lab File: BE091155.D
 Acq: 13 Nov 2015 23:45

Instrument :
 BNA_E
 ClientSampled :
 D9KP0



Tgt Ion	Resp	Lower	Upper
202	100		
101	3.8	0.0	33.1
203	20.5	0.0	37.2

Manual Integrations
 APPROVED
 mmdadoda
 11/16/2015 3:24:21 PM



#19
 Pyrene
 Concen: 0.04 ng/ul
 RT: 18.49 min Scan# 2418
 Delta R.T. -0.01 min
 Lab File: BE091155.D
 Acq: 13 Nov 2015 23:45

Tgt Ion	Resp	Lower	Upper
202	100		
200	5.5	18.0	27.0#
203	23.2	13.8	20.6#

