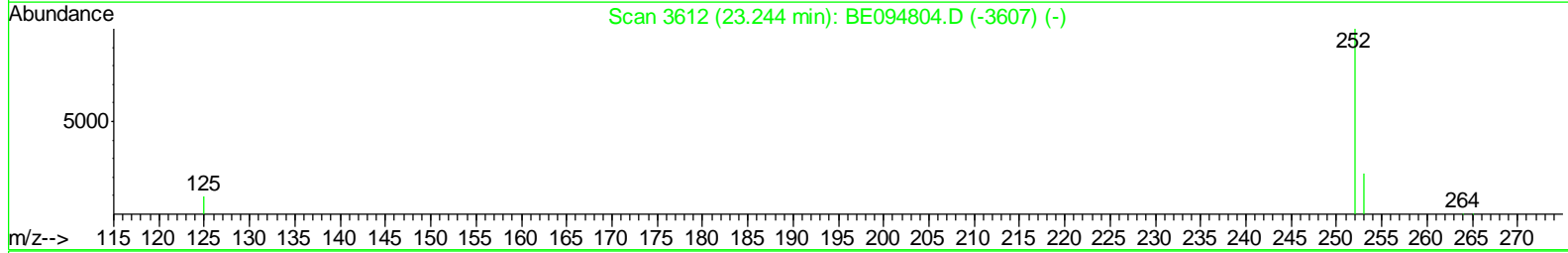
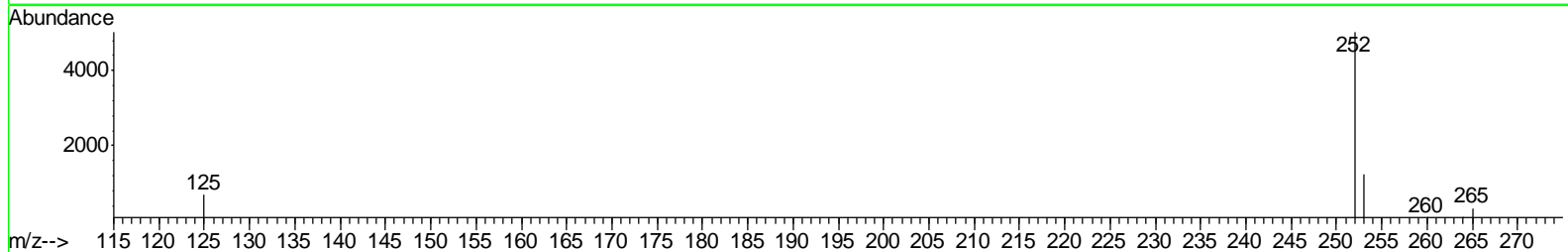
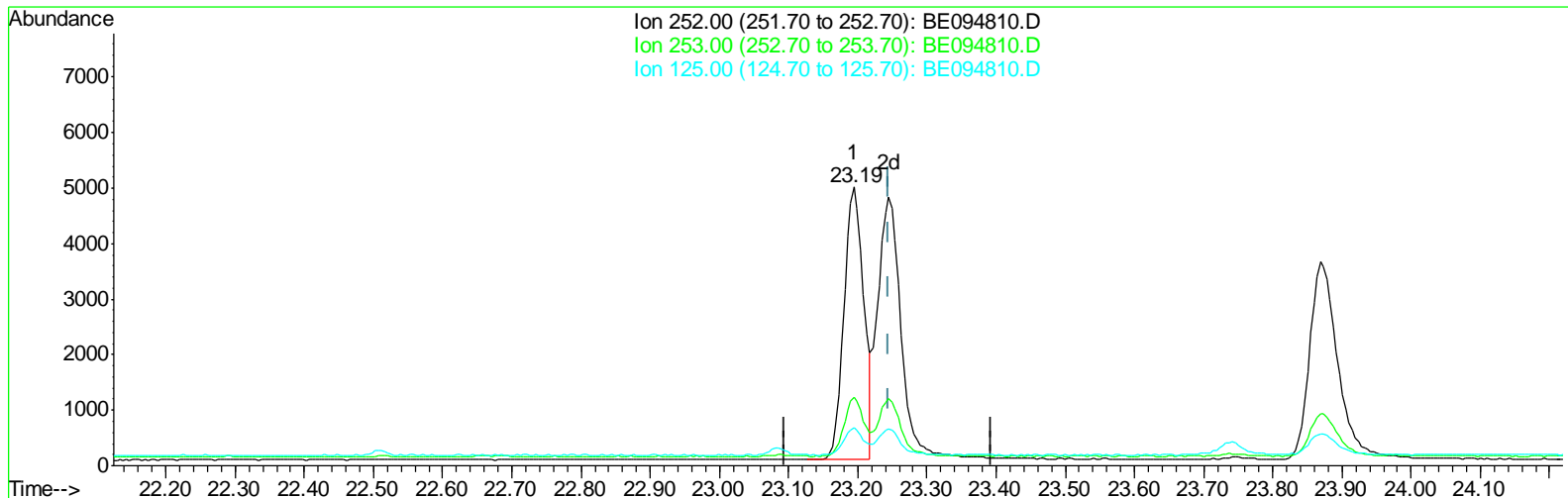


Data Path : Z:\HPCHEM1\BNA E\DATA\BE111517\  
 Data File : BE094810.D  
 Acq On : 15 Nov 2017 9:48  
 Operator : SJ/JU  
 Sample : SSTDCCC0.4  
 Misc :  
 ALS Vial : 2 Sample Multiplier: 1

**Instrument :**  
 BNA\_E  
**LabSampleId :**  
 SSTD0.491

**Manual Integrations**  
**APPROVED**  
 SOHIL  
 11/16/2017 6:17:08 PM

Quant Time: Nov 16 00:52:10 2017  
 Quant Method : Z:\HPCHEM1\BNA E\METHODS\SOM-EPA-SIM-BE111417.M  
 Quant Title : ASP BNA STANDARDS FOR 5 POINT CALIBRATION  
 QLast Update : Tue Nov 14 16:33:16 2017  
 Response via : Initial Calibration



TIC: BE094810.D

(22) Benzo(k)fluoranthene  
 23.195min (-0.050) 0.33ng/ul  
 response 9902

Ion	Exp%	Act%
252.00	100	100
253.00	30.60	24.49
125.00	17.10	13.72
0.00	0.00	0.00

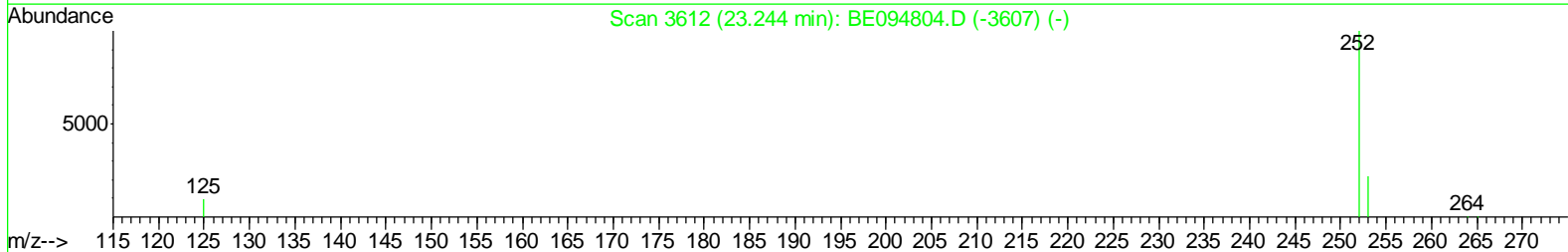
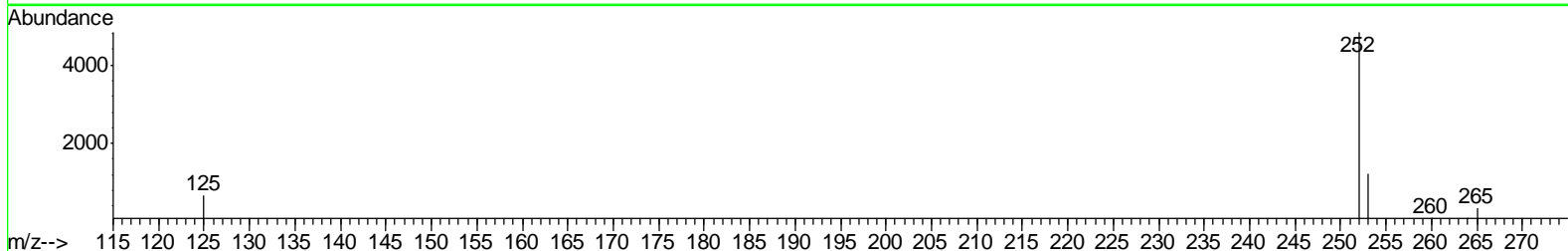
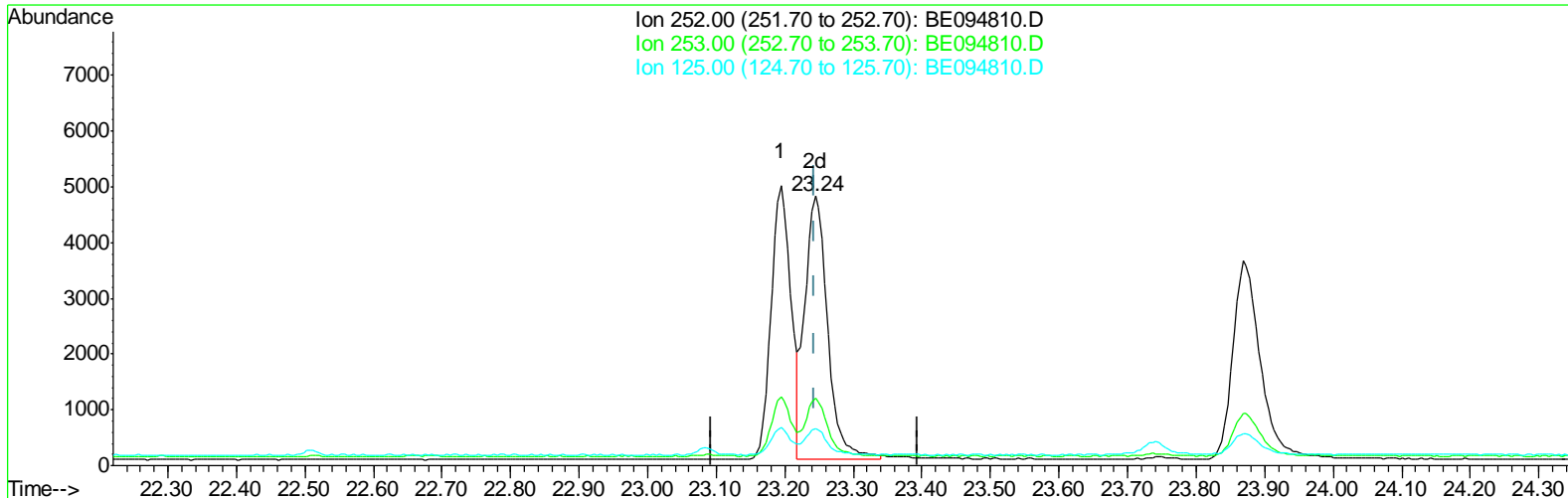
Data Path : Z:\HPCHEM1\BNA E\DATA\BE111517\  
 Data File : BE094810.D  
 Acq On : 15 Nov 2017 9:48  
 Operator : SJ/JU  
 Sample : SSTDCCC0.4  
 Misc :  
 ALS Vial : 2 Sample Multiplier: 1

Instrument :  
 BNA\_E  
 LabSampleID :  
 SSTD0.491

Manual Integrations  
 APPROVED

SOHIL  
 11/16/2017 6:17:08 PM

Quant Time: Nov 16 00:52:10 2017  
 Quant Method : Z:\HPCHEM1\BNA E\METHODS\SOM-EPA-SIM-BE111417.M  
 Quant Title : ASP BNA STANDARDS FOR 5 POINT CALIBRATION  
 QLast Update : Tue Nov 14 16:33:16 2017  
 Response via : Initial Calibration



TIC: BE094810.D

(22) Benzo(k)fluoranthene  
 23.245min (+0.000) 0.37ng/ul m  
 response 10985

Ion	Exp%	Act%
252.00	100	100
253.00	30.60	24.93
125.00	17.10	13.64#
0.00	0.00	0.00

Data Path : Z:\HPCHEM1\BNA E\DATA\BE111517\  
 Data File : BE094810.D  
 Acq On : 15 Nov 2017 9:48  
 Operator : SJ/JU  
 Sample : SSTDCCC0.4  
 Misc :  
 ALS Vial : 2 Sample Multiplier: 1

**Instrument :**  
 BNA\_E  
**LabSampleId :**  
 SSTD0.491

**Manual Integrations**  
**APPROVED**  
 SOHIL  
 11/16/2017 6:17:08 PM

Quant Time: Nov 16 00:56:12 2017  
 Quant Method : Z:\HPCHEM1\BNA E\METHODS\SOM-EPA-SIM-BE111417.M  
 Quant Title : ASP BNA STANDARDS FOR 5 POINT CALIBRATION  
 QLast Update : Tue Nov 14 16:33:16 2017  
 Response via : Initial Calibration

Internal Standards	R.T.	QIon	Response	Conc	Units	Dev(Min)
1) 1,4-Dichlorobenzene-d4	7.93	152	861	0.40	ng/ul	0.00
2) Naphthalene-d8	10.72	136	4926	0.40	ng/ul	0.01
6) Acenaphthene-d10	14.53	164	2919	0.40	ng/ul	0.00
10) Phenanthrene-d10	17.27	188	7738	0.40	ng/ul	0.00
16) Chrysene-d12	21.44	240	9963	0.40	ng/ul	0.00
20) Perylene-d12	23.98	264	9443	0.40	ng/ul	0.00
System Monitoring Compounds						
4) 2-Methylnaphthalene-d10	12.31	152	2887	0.36	ng/ul	0.00
14) Fluoranthene-d10	19.29	212	9896	0.37	ng/ul	0.00
Target Compounds						
3) Naphthalene	10.76	128	4380	0.37	ng/ul#	96
5) 2-Methylnaphthalene	12.39	142	3006	0.37	ng/ul	99
7) Acenaphthylene	14.25	152	4928	0.37	ng/ul	99
8) Acenaphthene	14.59	153	3549	0.38	ng/ul	96
9) Fluorene	15.59	166	4184	0.37	ng/ul	95
11) Pentachlorophenol	17.07	266	124	0.30	ng/ul	93
12) Phenanthrene	17.31	178	7474	0.36	ng/ul#	89
13) Anthracene	17.41	178	7495	0.35	ng/ul#	93
15) Fluoranthene	19.33	202	10177	0.37	ng/ul	84
17) Pyrene	19.69	202	10977	0.35	ng/ul#	82
18) Benzo(a)anthracene	21.42	228	11034	0.36	ng/ul#	85
19) Chrysene	21.47	228	10942	0.36	ng/ul	98
21) Benzo(b)fluoranthene	23.19	252	9902	0.35	ng/ul	88
22) Benzo(k)fluoranthene	23.24	252	10985m	0.37	ng/ul	
23) Benzo(a)pyrene	23.87	252	10016	0.36	ng/ul#	84
24) Indeno(1,2,3-cd)pyrene	26.70	276	10936	0.36	ng/ul#	81
25) Dibenzo(a,h)anthracene	26.69	278	9193	0.36	ng/ul	94
26) Benzo(a,h,i)perylene	27.54	276	9140	0.36	ng/ul	96

(#) = qualifier out of range (m) = manual integration (+) = signals summed

Data Path : Z:\HPCHEM1\BNA E\DATA\BE111517\  
 Data File : BE094810.D  
 Acq On : 15 Nov 2017 9:48  
 Operator : SJ/JU  
 Sample : SSTDCCC0.4  
 Misc :  
 ALS Vial : 2 Sample Multiplier: 1

Instrument :  
 BNA\_E  
 LabSampleID :  
 SSTD0.491

Manual Integrations  
 APPROVED  
 SOHIL  
 11/16/2017 6:17:08 PM

Quant Time: Nov 16 00:56:12 2017  
 Quant Method : Z:\HPCHEM1\BNA E\METHODS\SOM-EPA-SIM-BE111417.M  
 Quant Title : ASP BNA STANDARDS FOR 5 POINT CALIBRATION  
 QLast Update : Tue Nov 14 16:33:16 2017  
 Response via : Initial Calibration

