

Data Path : Z:\HPCHEM1\BNA E\DATA\BE111616\
 Data File : BE092533.D
 Acq On : 16 Nov 2016 13:32
 Operator : UM/SJ
 Sample : SSTDIC3.2
 Misc :
 ALS Vial : 8 Sample Multiplier: 1

Instrument :
 BNA_E
 ClientSampleId :
 SSTDIC3.2

Quant Time: Nov 16 14:09:09 2016
 Quant Method : Z:\HPCHEM1\BNA E\METHODS\8270-SIM-BE111616.M
 Quant Title : ASP BNA STANDARDS FOR 5 POINT CALIBRATION
 QLast Update : Wed Nov 16 13:29:35 2016
 Response via : Initial Calibration

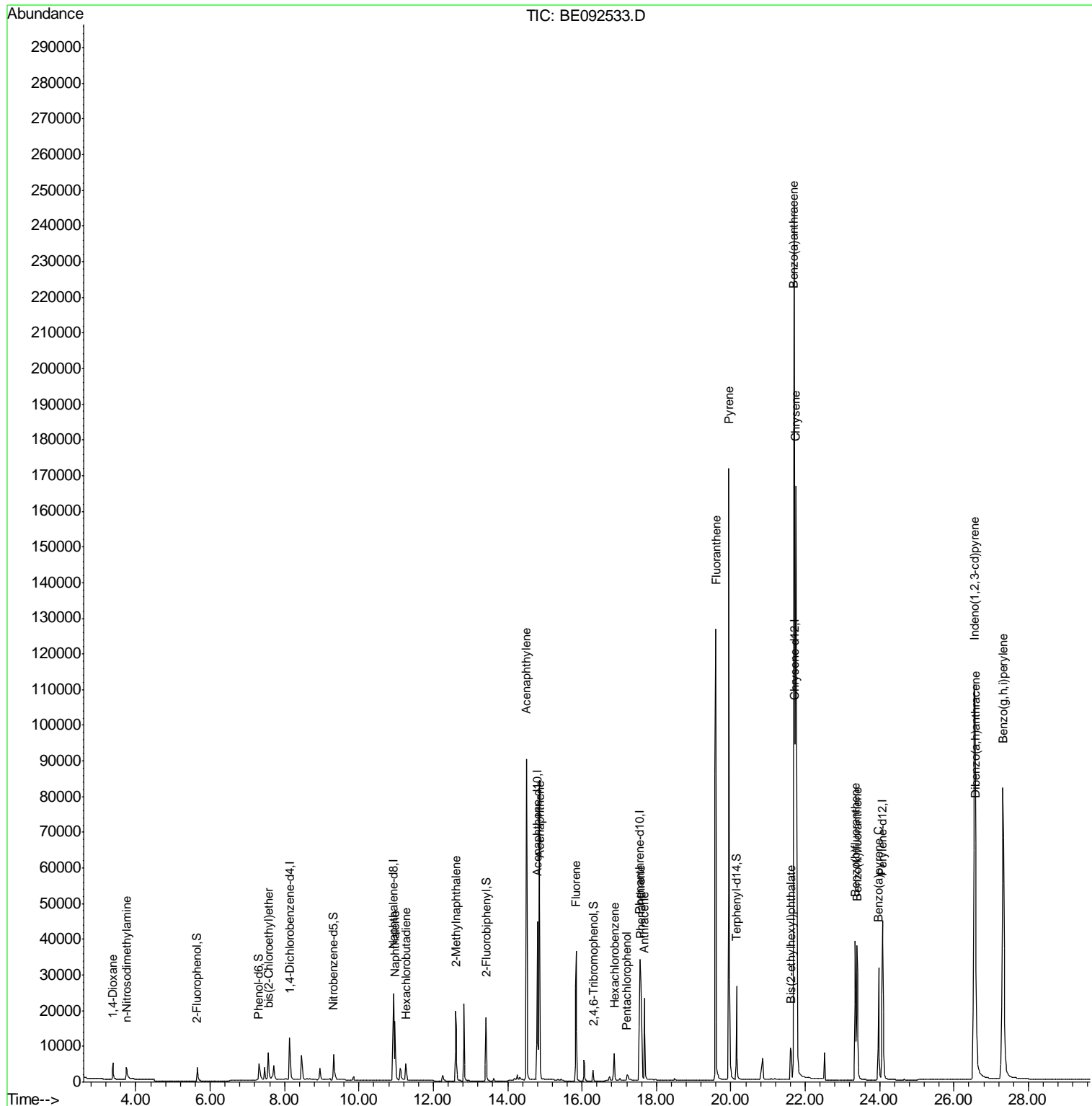
Internal Standards	R.T.	QIon	Response	Conc	Units	Dev(Min)
1) 1,4-Dichlorobenzene-d4	8.14	152	7542	5.00	ng	-0.02
7) Naphthalene-d8	10.93	136	38160	5.00	ng	0.00
12) Acenaphthene-d10	14.80	164	27043	5.00	ng	0.00
18) Phenanthrene-d10	17.56	188	57266	5.00	ng	0.00
24) Chrysene-d12	21.72	240	86775	5.00	ng	0.00
31) Perylene-d12	24.08	264	69352	5.00	ng	-0.01
System Monitoring Compounds						
4) 2-Fluorophenol	5.66	112	4786	2.88	ng	-0.02
5) Phenol-d6	7.31	99	6814	3.07	ng	-0.05
8) Nitrobenzene-d5	9.32	82	7938	3.17	ng	-0.05
13) 2,4,6-Tribromophenol	16.30	330	2372	3.09	ng	-0.01
14) 2-Fluorobiphenyl	13.42	172	20634	3.09	ng	-0.01
26) Terphenyl-d14	20.16	244	31484	2.99	ng	-0.02
Target Compounds						
2) 1,4-Dioxane	3.39	88	2992	2.56	ng	95
3) n-Nitrosodimethylamine	3.75	42	3828	2.80	ng	95
6) bis(2-Chloroethyl)ether	7.57	93	7654	3.15	ng	86
9) Naphthalene	10.97	128	24783	3.00	ng	# 95
10) Hexachlorobutadiene	11.26	225	3677	2.94	ng	99
11) 2-Methylnaphthalene	12.60	142	16621	3.10	ng	97
15) Acenaphthylene	14.51	152	119858	3.09	ng	100
16) Acenaphthene	14.87	154	18634	2.97	ng	94
17) Fluorene	15.84	166	24454	3.11	ng	100
19) Hexachlorobenzene	16.87	284	7613m	3.52	ng	
20) Pentachlorophenol	17.21	266	2028	3.24	ng	# 83
21) Phenanthrene	17.58	178	40719	3.29	ng	# 94
22) Anthracene	17.67	178	39472	3.29	ng	99
23) Fluoranthene	19.59	202	194510	3.13	ng	99
25) Pyrene	19.95	202	210552	2.96	ng	100
27) Benzo(a)anthracene	21.70	228	246983m	2.81	ng	
28) Chrysene	21.75	228	213450m	2.26	ng	
29) Bis(2-ethylhexyl)phthalate	21.61	149	16691	1.80	ng	# 56
30) Indeno(1,2,3-cd)pyrene	26.55	276	247803	2.58	ng	98
32) Benzo(b)fluoranthene	23.35	252	53246m	2.04	ng	
33) Benzo(k)fluoranthene	23.39	252	56639	2.07	ng	93
34) Benzo(a)pyrene	23.97	252	52575	2.93	ng	# 95
35) Dibenzo(a,h)anthracene	26.58	278	50500	2.99	ng	95
36) Benzo(g,h,i)perylene	27.31	276	207960	2.99	ng	97

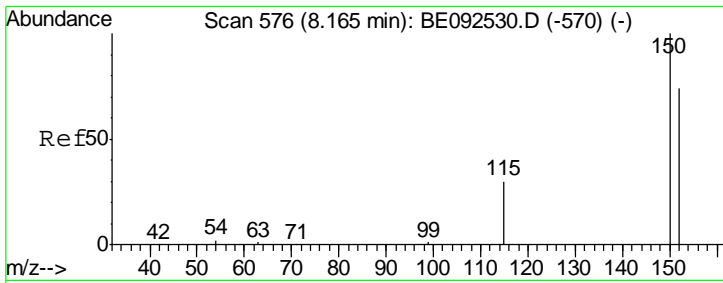
(#) = qualifier out of range (m) = manual integration (+) = signals summed

Data Path : Z:\HPCHEM1\BNA E\DATA\BE111616\
 Data File : BE092533.D
 Acq On : 16 Nov 2016 13:32
 Operator : UM/SJ
 Sample : SSTDIC3.2
 Misc :
 ALS Vial : 8 Sample Multiplier: 1

Instrument :
 BNA_E
 Client Sampled :
 SSTDIC3.2

Quant Time: Nov 16 14:09:09 2016
 Quant Method : Z:\HPCHEM1\BNA E\METHODS\8270-SIM-BE111616.M
 Quant Title : ASP BNA STANDARDS FOR 5 POINT CALIBRATION
 QLast Update : Wed Nov 16 13:29:35 2016
 Response via : Initial Calibration



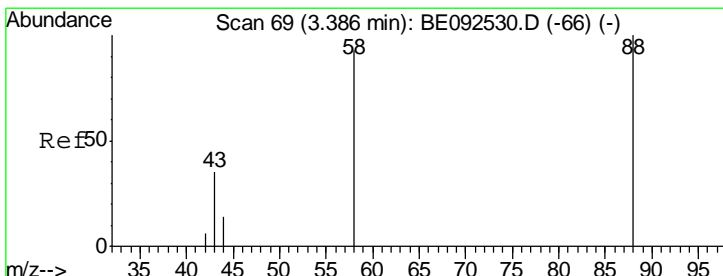
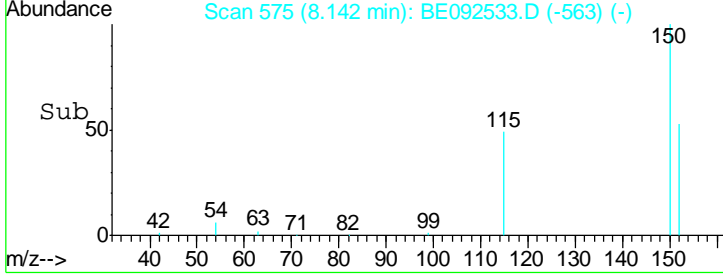
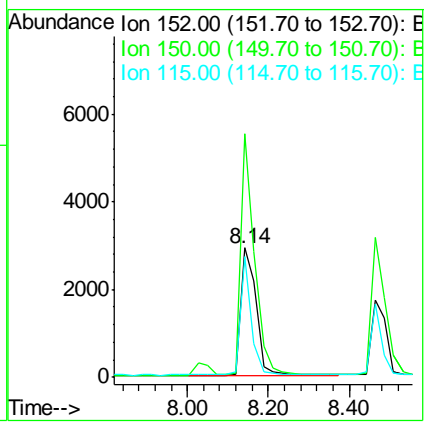
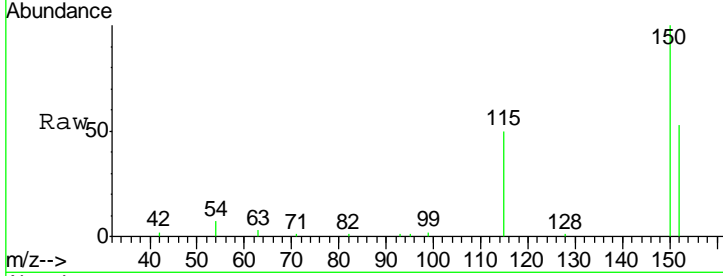


#1
 1,4-Dichlorobenzene-d4
 Concen: 5.00 ng
 RT: 8.14 min Scan# 575
 Delta R.T. -0.02 min
 Lab File: BE092533.D
 Acq: 16 Nov 2016 13:32

Instrument :
 BNA_E
ClientSampled :
 SSTDICC3.2

Tgt Ion: 152 Resp: 7542

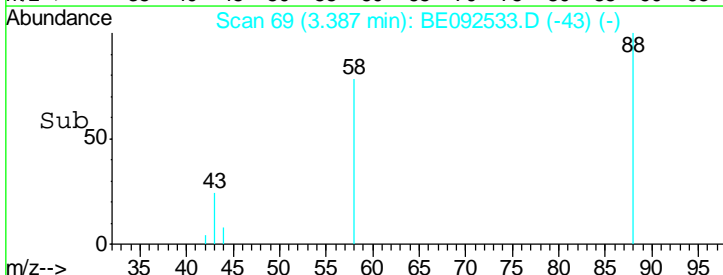
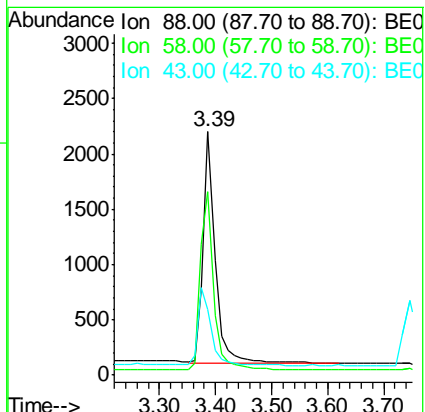
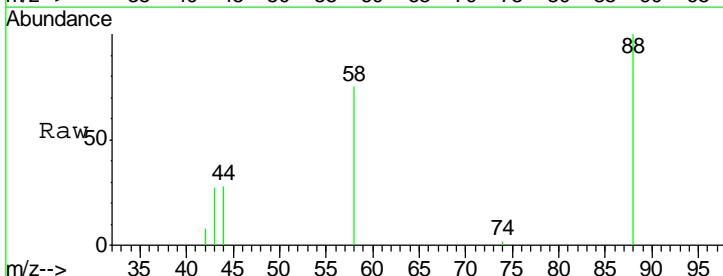
Ion	Ratio	Lower	Upper
152	100		
150	188.1	106.0	159.0#
115	93.5	31.2	46.8#

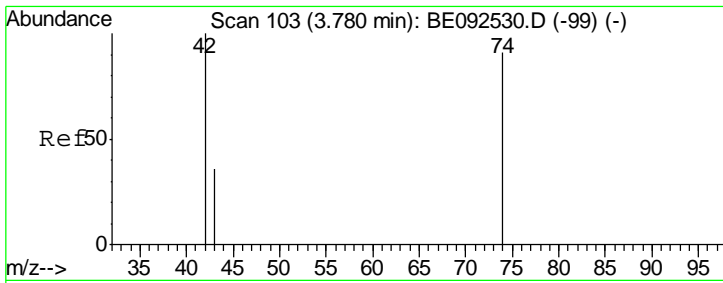


#2
 1,4-Dioxane
 Concen: 2.56 ng
 RT: 3.39 min Scan# 69
 Delta R.T. 0.00 min
 Lab File: BE092533.D
 Acq: 16 Nov 2016 13:32

Tgt Ion: 88 Resp: 2992

Ion	Ratio	Lower	Upper
88	100		
58	85.0	63.6	95.4
43	36.9	28.0	42.0

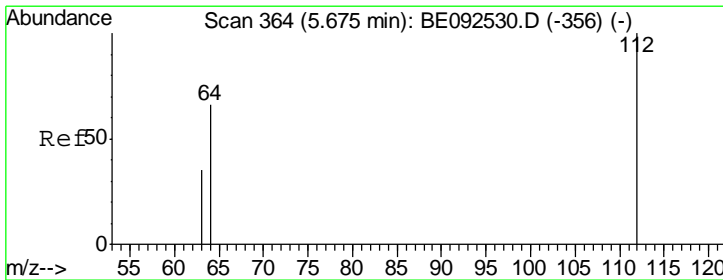
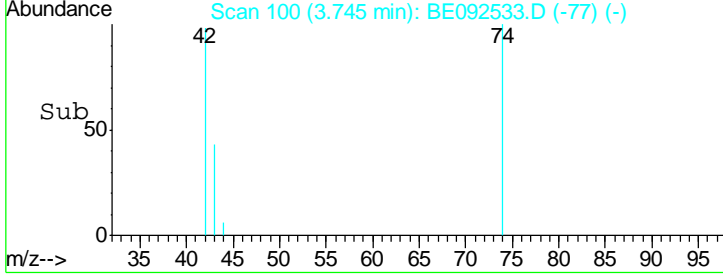
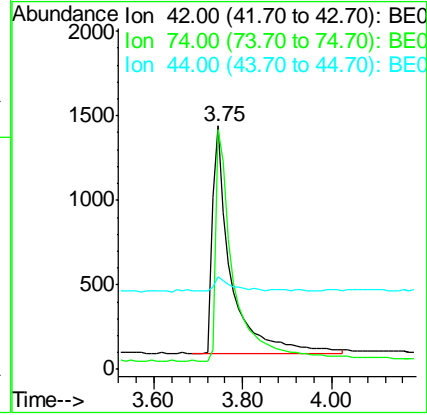
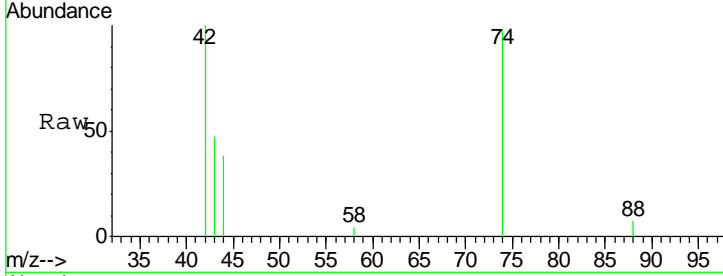




#3
 n-Nitrosodimethylamine
 Concen: 2.80 ng
 RT: 3.75 min Scan# 100
 Delta R.T. -0.03 min
 Lab File: BE092533.D
 Acq: 16 Nov 2016 13:32

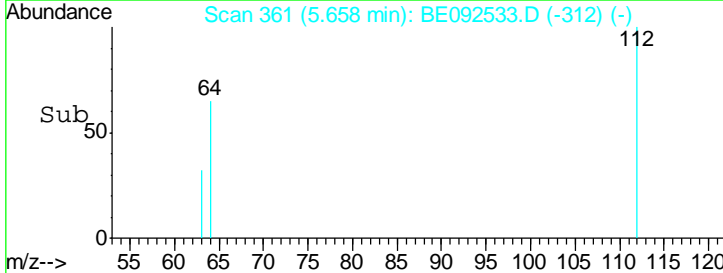
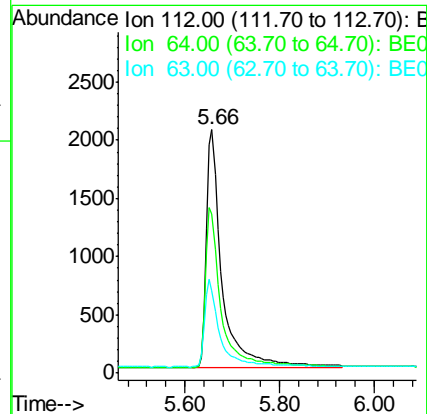
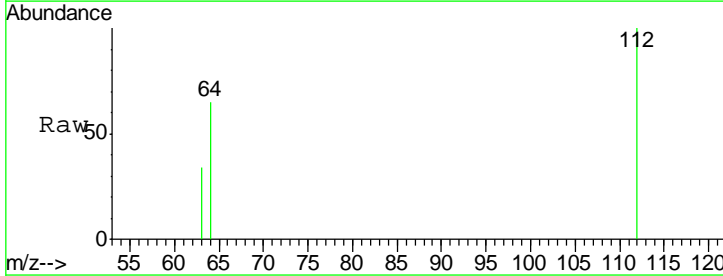
Instrument :
 BNA_E
 ClientSampleId :
 SSTDICC3.2

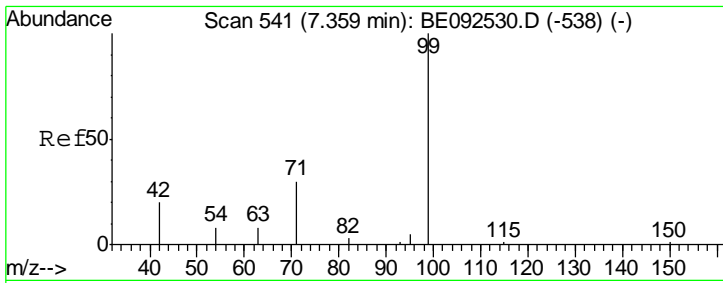
Tgt Ion	Resp	Lower	Upper
42	3828		
74	101.6	86.0	129.0
44	6.2	5.1	7.7



#4
 2-Fluorophenol
 Concen: 2.88 ng
 RT: 5.66 min Scan# 361
 Delta R.T. -0.02 min
 Lab File: BE092533.D
 Acq: 16 Nov 2016 13:32

Tgt Ion	Resp	Lower	Upper
112	4786		
64	67.3	53.5	80.3
63	35.3	27.9	41.9

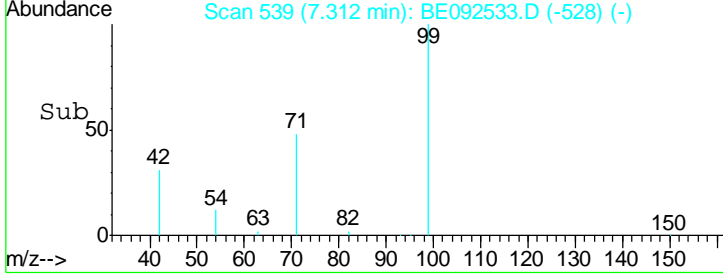
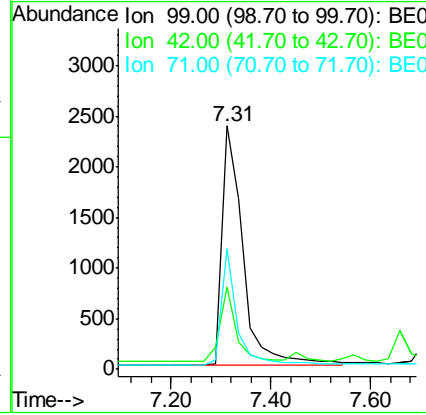
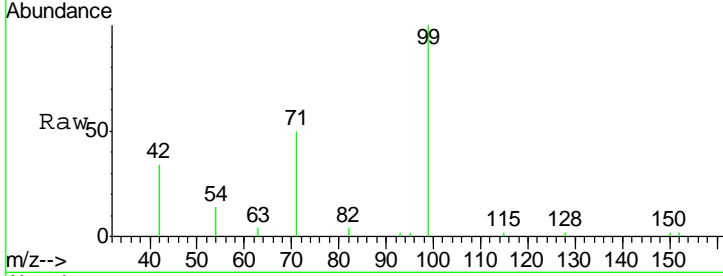




#5
 Phenol-d6
 Concen: 3.07 ng
 RT: 7.31 min Scan# 539
 Delta R.T. -0.05 min
 Lab File: BE092533.D
 Acq: 16 Nov 2016 13:32

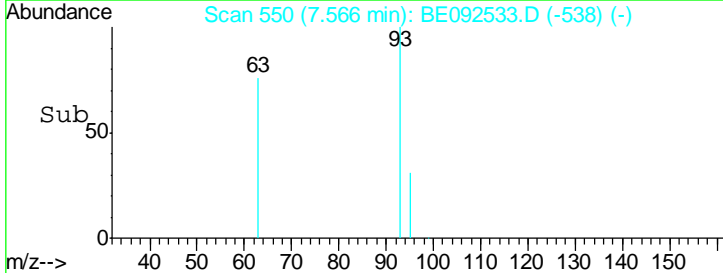
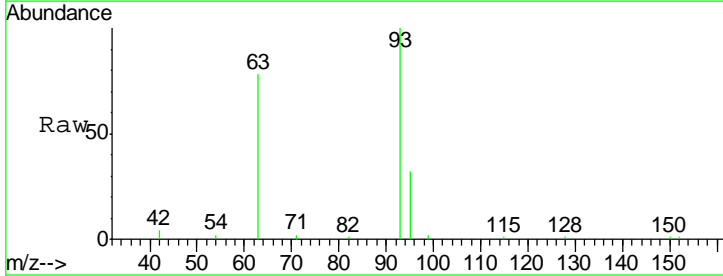
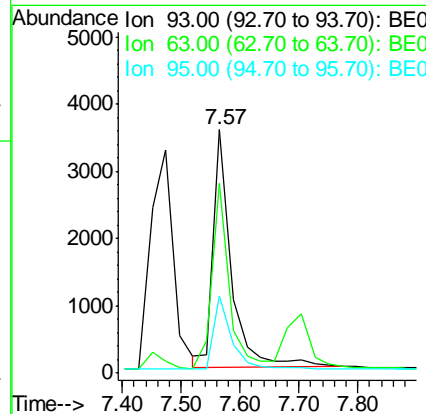
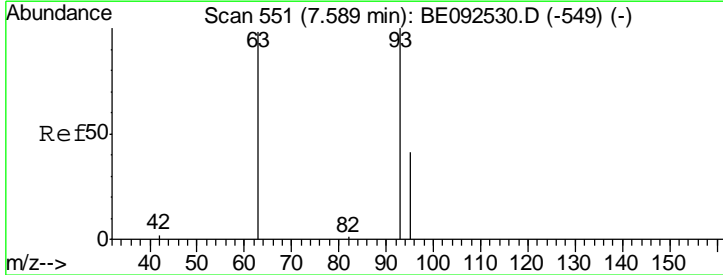
Instrument :
 BNA_E
ClientSampled :
 SSTDICC3.2

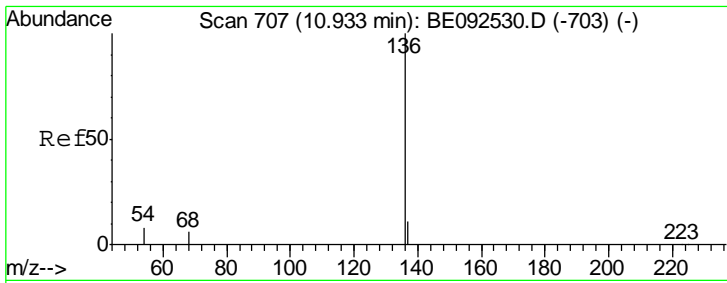
Tgt Ion	Resp	Lower	Upper
99	6814		
42	25.0	16.0	24.0#
71	35.8	30.6	45.8



#6
 bis(2-Chloroethyl)ether
 Concen: 3.15 ng
 RT: 7.57 min Scan# 550
 Delta R.T. -0.02 min
 Lab File: BE092533.D
 Acq: 16 Nov 2016 13:32

Tgt Ion	Resp	Lower	Upper
93	7654		
63	72.9	71.6	107.4
95	31.4	24.0	36.0

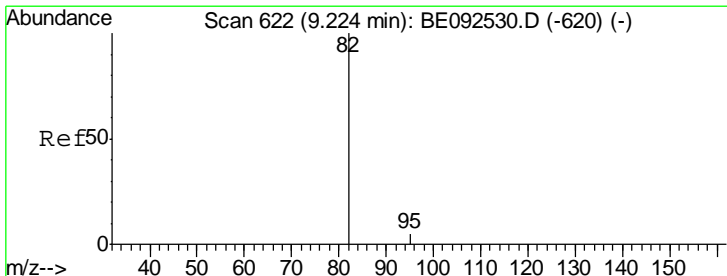
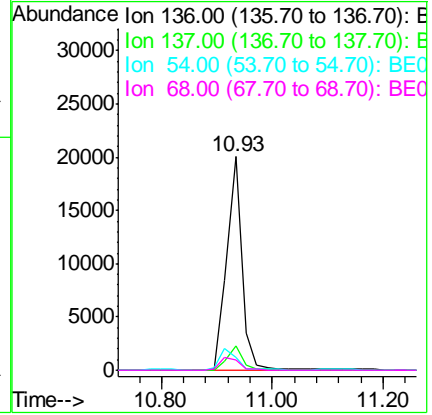
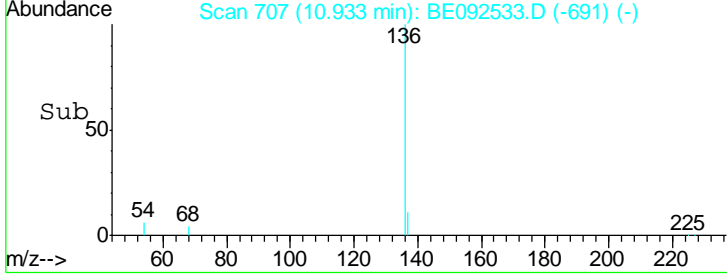
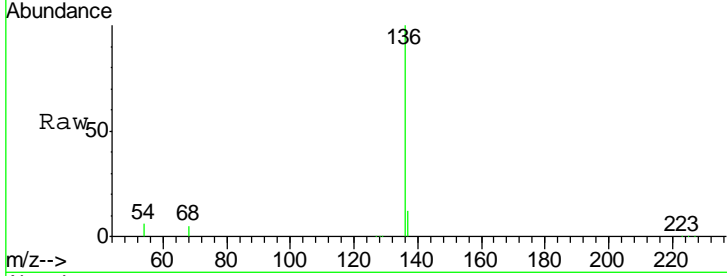




#7
 Naphthalene-d8
 Concen: 5.00 ng
 RT: 10.93 min Scan# 707
 Delta R.T. 0.00 min
 Lab File: BE092533.D
 Acq: 16 Nov 2016 13:32

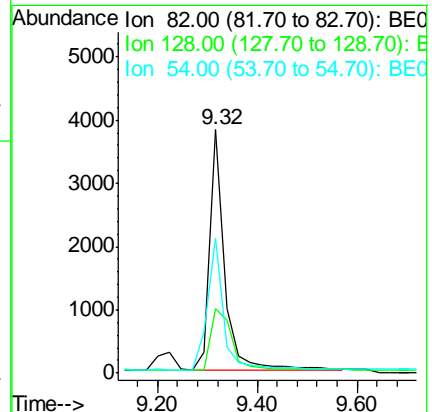
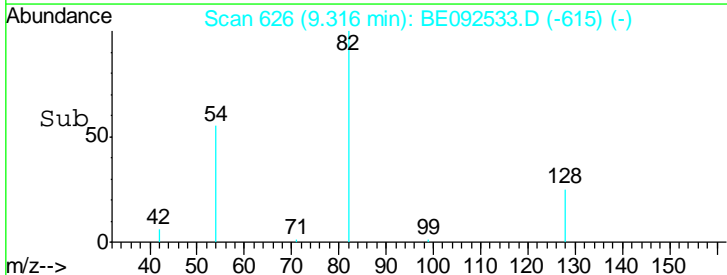
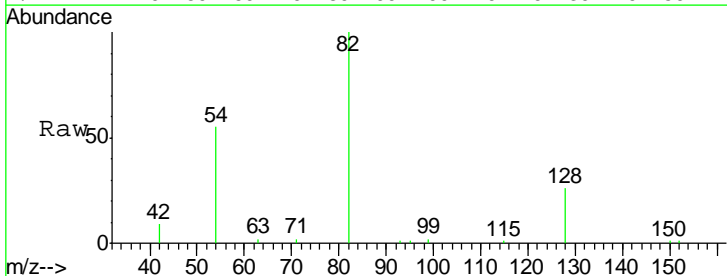
Instrument :
 BNA_E
ClientSampleId :
 SSTDICC3.2

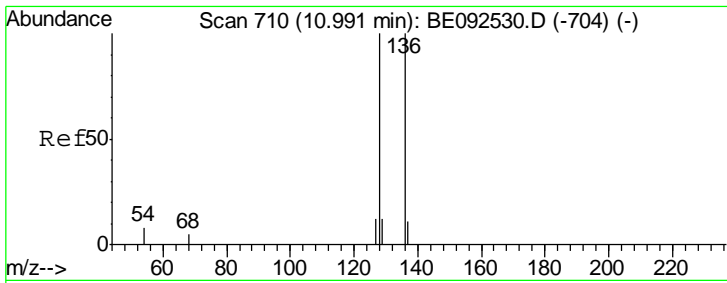
Tgt Ion	Resp	Lower	Upper
136	38160		
137	11.6	8.2	12.4
54	6.0	9.6	14.4#
68	4.7	6.7	10.1#



#8
 Nitrobenzene-d5
 Concen: 3.17 ng
 RT: 9.32 min Scan# 626
 Delta R.T. -0.05 min
 Lab File: BE092533.D
 Acq: 16 Nov 2016 13:32

Tgt Ion	Resp	Lower	Upper
82	7938		
128	26.2	39.0	58.4#
54	55.4	44.8	67.2

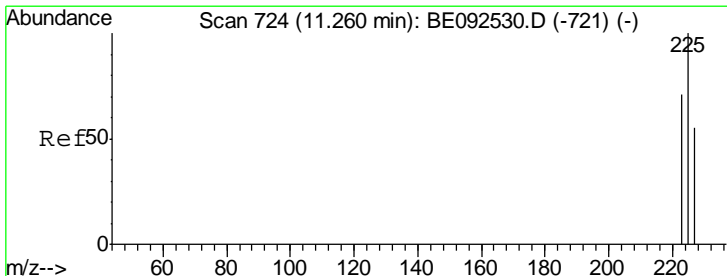
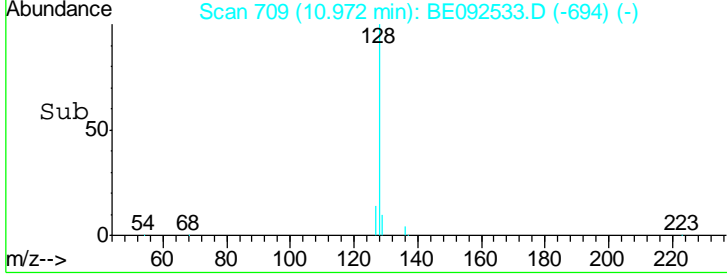
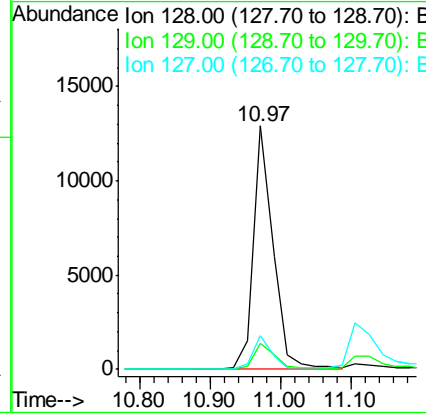
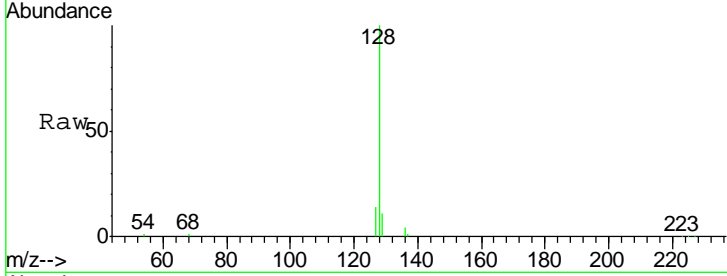




#9
 Naphthalene
 Concen: 3.00 ng
 RT: 10.97 min Scan# 709
 Delta R.T. -0.02 min
 Lab File: BE092533.D
 Acq: 16 Nov 2016 13:32

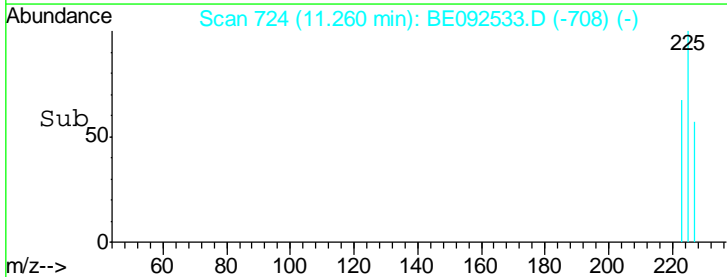
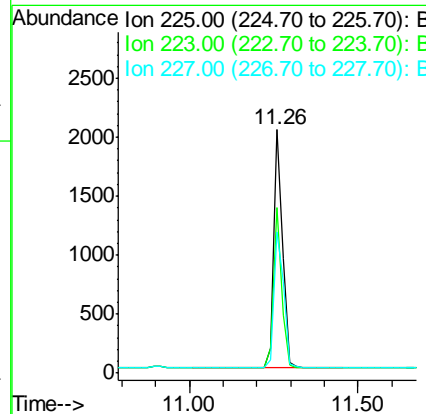
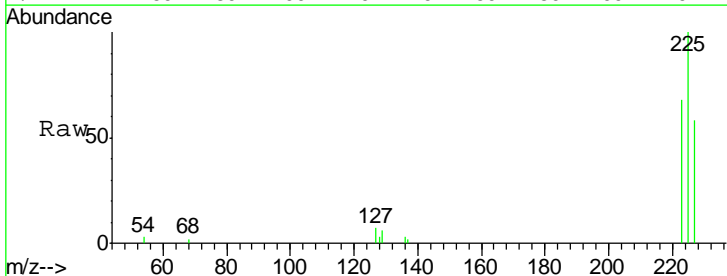
Instrument :
 BNA_E
 ClientSampleId :
 SSTDIC3.2

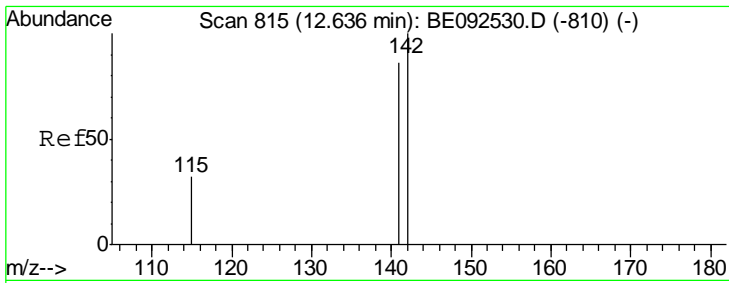
Tgt Ion	Resp	Lower	Upper
128	100		
129	10.7	11.2	16.8#
127	13.9	11.6	17.4



#10
 Hexachlorobutadiene
 Concen: 2.94 ng
 RT: 11.26 min Scan# 724
 Delta R.T. 0.00 min
 Lab File: BE092533.D
 Acq: 16 Nov 2016 13:32

Tgt Ion	Resp	Lower	Upper
225	100		
223	62.9	50.6	76.0
227	63.1	51.4	77.0

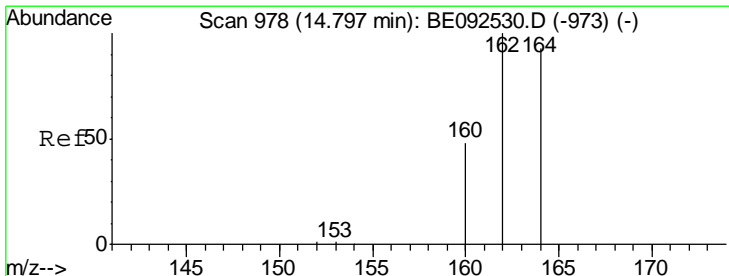
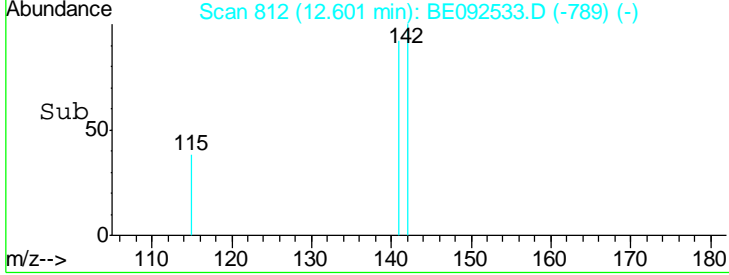
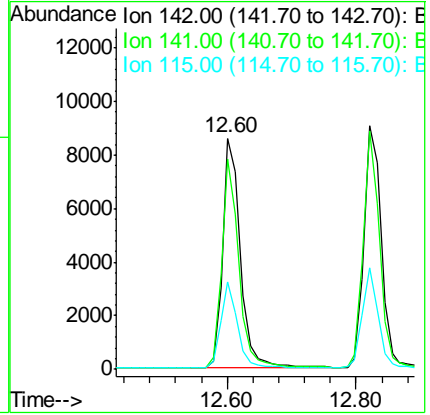
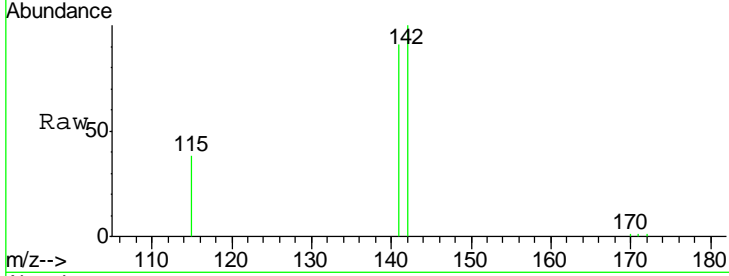




#11
 2-Methylnaphthalene
 Concen: 3.10 ng
 RT: 12.60 min Scan# 812
 Delta R.T. -0.04 min
 Lab File: BE092533.D
 Acq: 16 Nov 2016 13:32

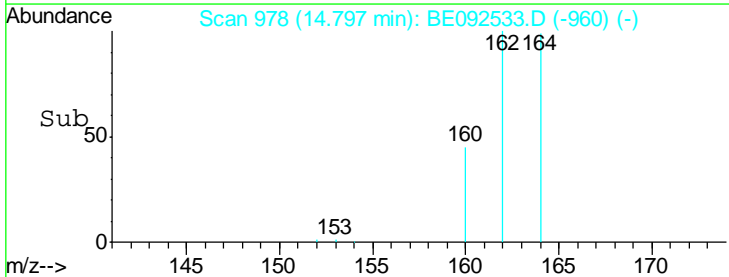
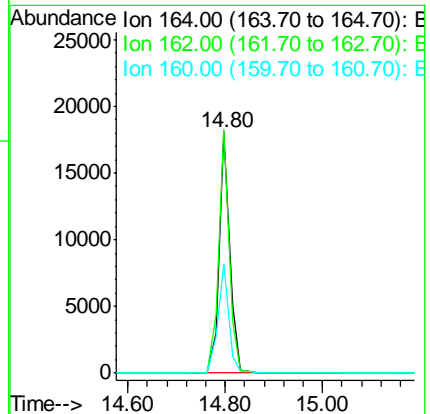
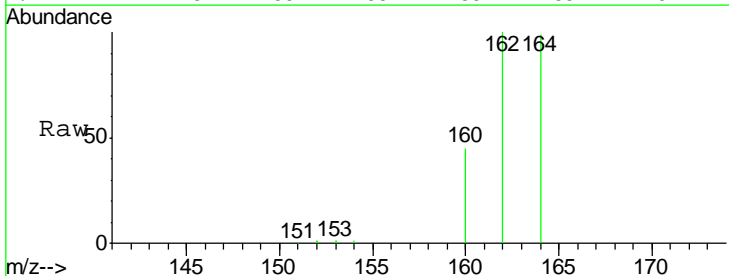
Instrument :
 BNA_E
 ClientSampleId :
 SSTDICC3.2

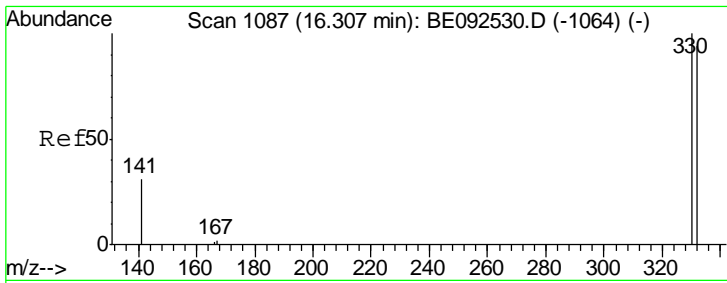
Tgt Ion	Resp	Lower	Upper
142	16621		
141	91.3	73.7	110.5
115	38.1	34.0	51.0



#12
 Acenaphthene-d10
 Concen: 5.00 ng
 RT: 14.80 min Scan# 978
 Delta R.T. 0.00 min
 Lab File: BE092533.D
 Acq: 16 Nov 2016 13:32

Tgt Ion	Resp	Lower	Upper
164	27043		
162	101.1	71.4	107.0
160	45.3	27.4	41.2#

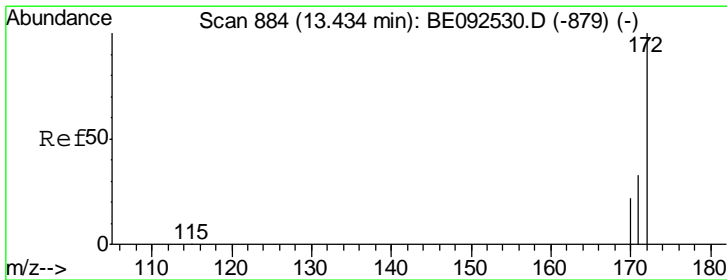
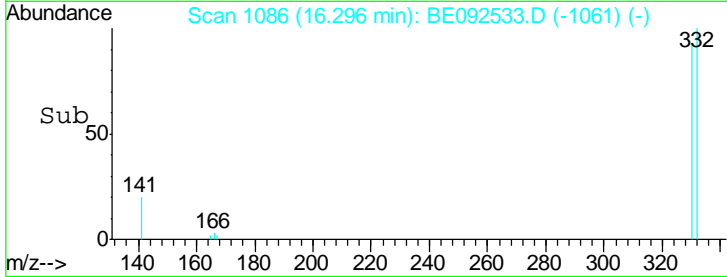
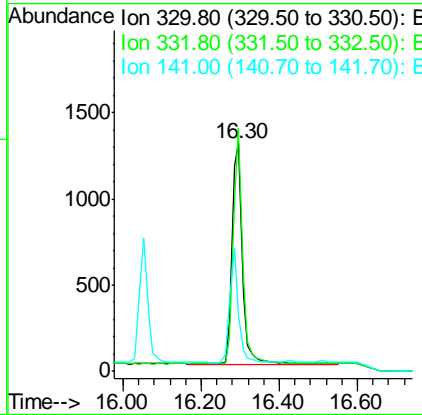
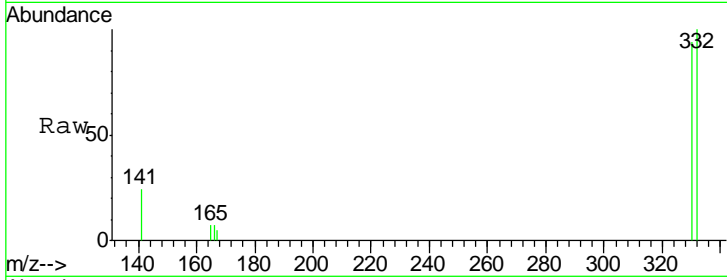




#13
 2,4,6-Tribromophenol
 Concen: 3.09 ng
 RT: 16.30 min Scan# 1086
 Delta R.T. -0.01 min
 Lab File: BE092533.D
 Acq: 16 Nov 2016 13:32

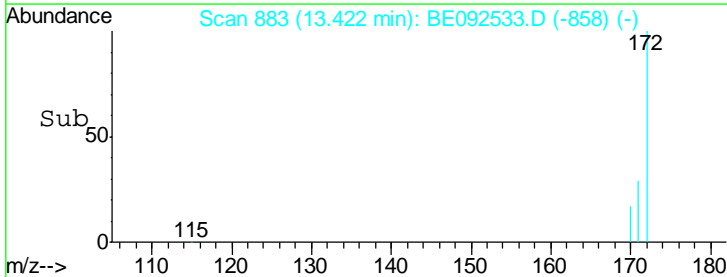
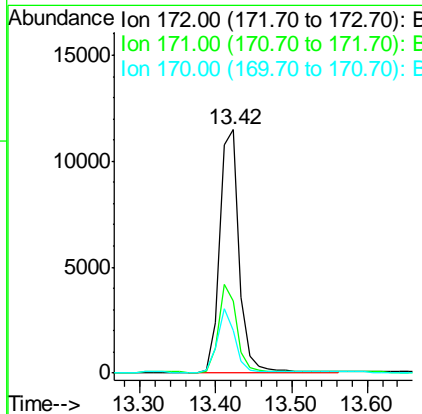
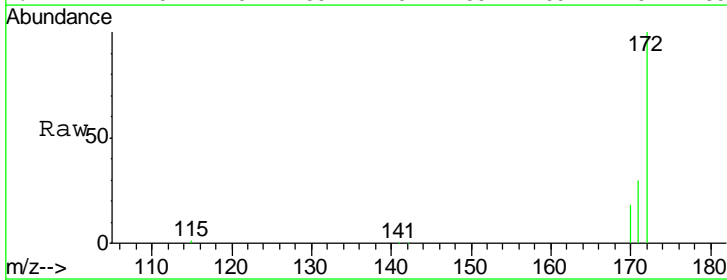
Instrument :
 BNA_E
 ClientSampleId :
 SSTDICC3.2

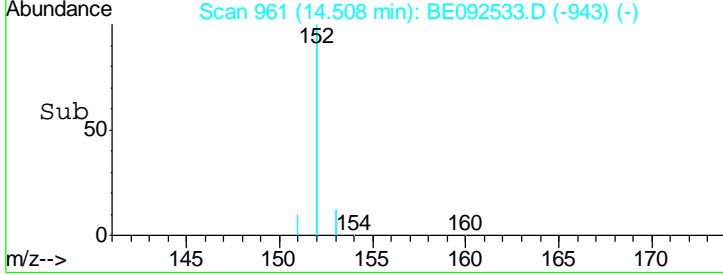
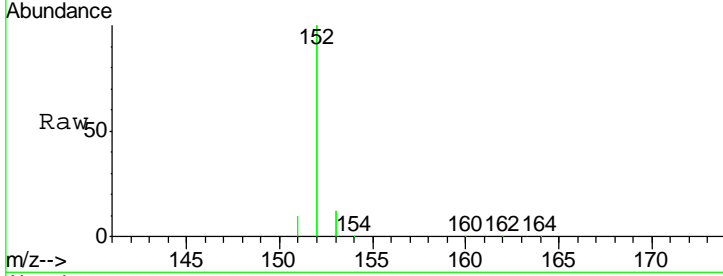
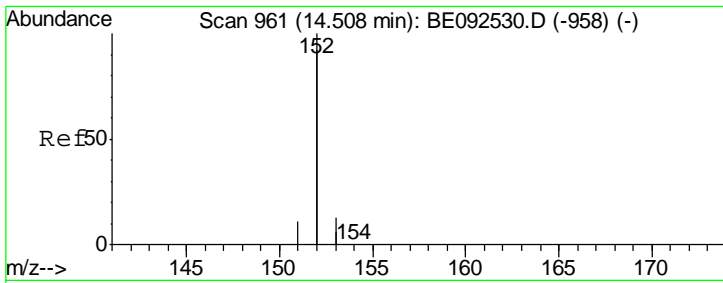
Tgt Ion	Resp	Lower	Upper
330	100		
332	97.4	75.4	113.0
141	44.2	31.0	46.6



#14
 2-Fluorobiphenyl
 Concen: 3.09 ng
 RT: 13.42 min Scan# 883
 Delta R.T. -0.01 min
 Lab File: BE092533.D
 Acq: 16 Nov 2016 13:32

Tgt Ion	Resp	Lower	Upper
172	100		
171	29.7	30.1	45.1#
170	17.7	21.8	32.6#



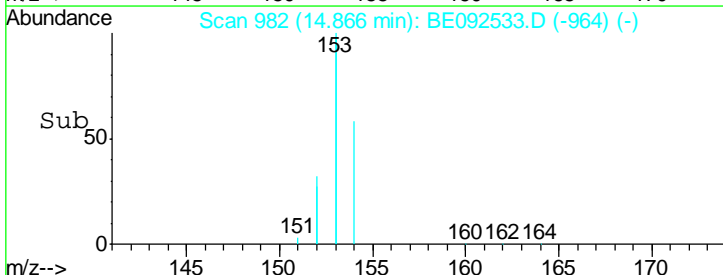
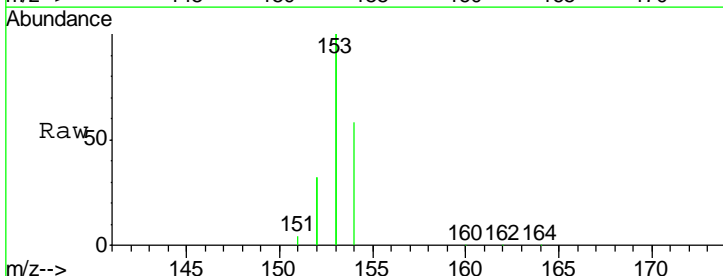
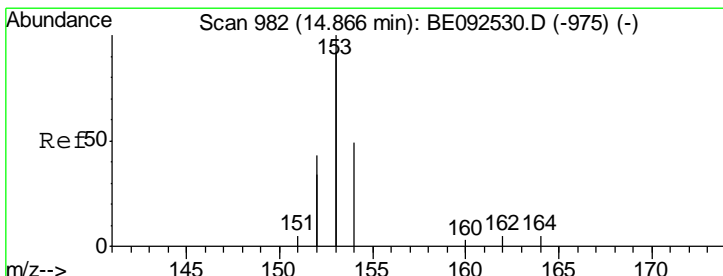
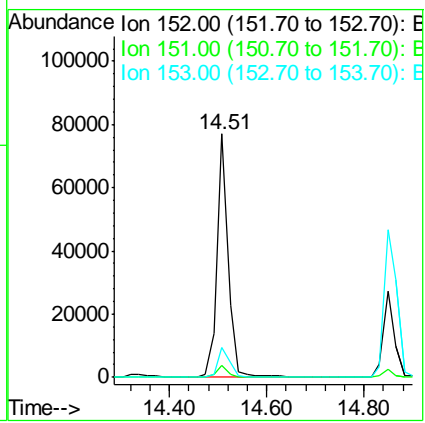


#15
 Acenaphthylene
 Concen: 3.09 ng
 RT: 14.51 min Scan# 961
 Delta R.T. 0.00 min
 Lab File: BE092533.D
 Acq: 16 Nov 2016 13:32

Instrument :
 BNA_E
 ClientSampled :
 SSTDICC3.2

Tgt Ion:152 Resp: 119858

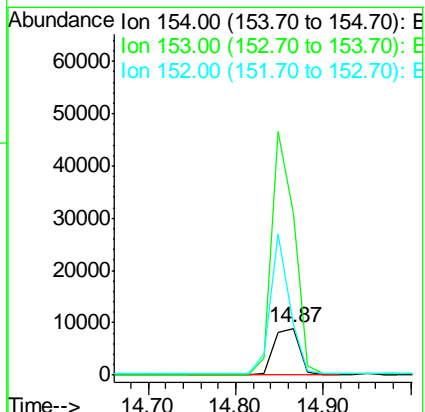
Ion	Ratio	Lower	Upper
152	100		
151	4.9	3.9	5.9
153	13.2	10.4	15.6

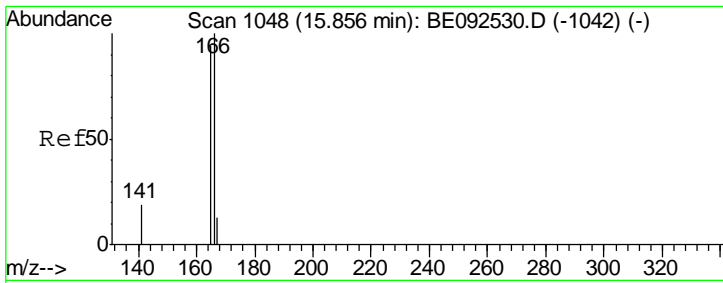


#16
 Acenaphthene
 Concen: 2.97 ng
 RT: 14.87 min Scan# 982
 Delta R.T. 0.00 min
 Lab File: BE092533.D
 Acq: 16 Nov 2016 13:32

Tgt Ion:154 Resp: 18634

Ion	Ratio	Lower	Upper
154	100		
153	451.8	350.8	526.2
152	225.9	171.1	256.7

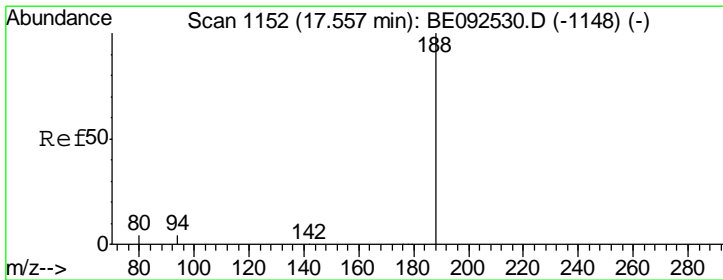
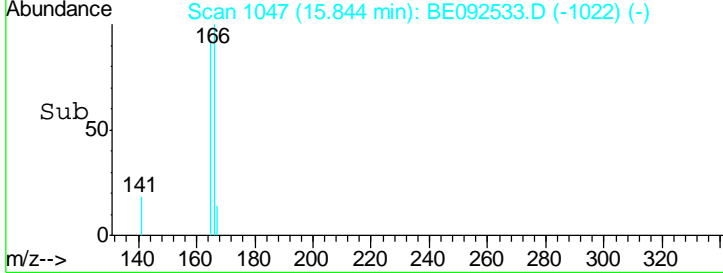
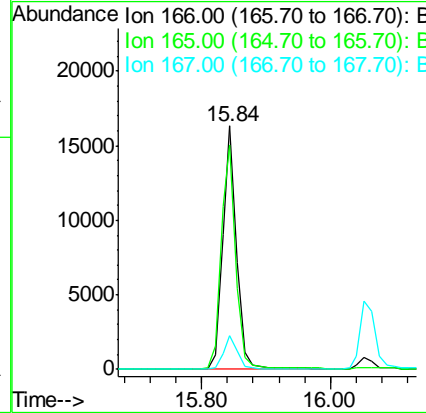
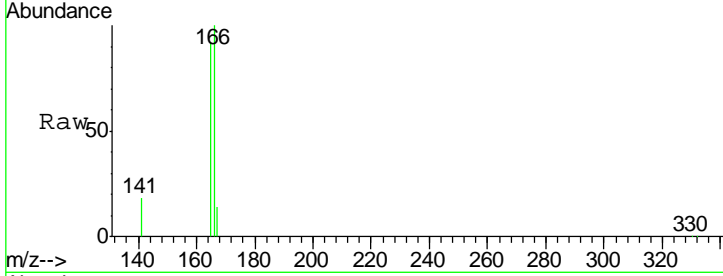




#17
 Fluorene
 Concen: 3.11 ng
 RT: 15.84 min Scan# 1047
 Delta R.T. -0.01 min
 Lab File: BE092533.D
 Acq: 16 Nov 2016 13:32

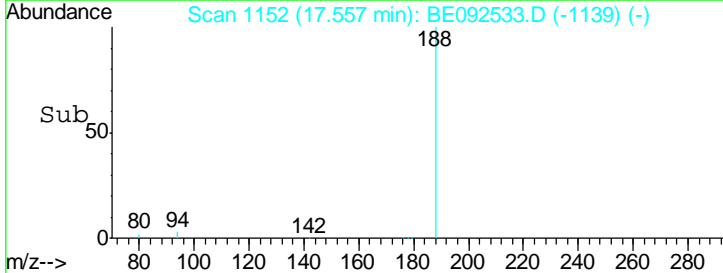
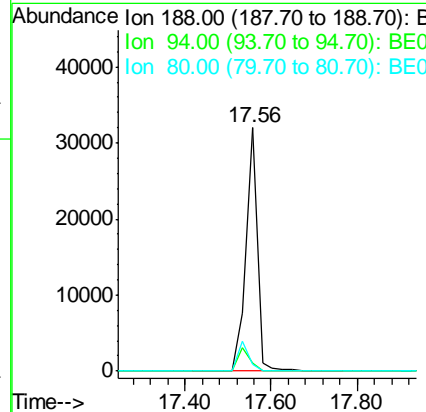
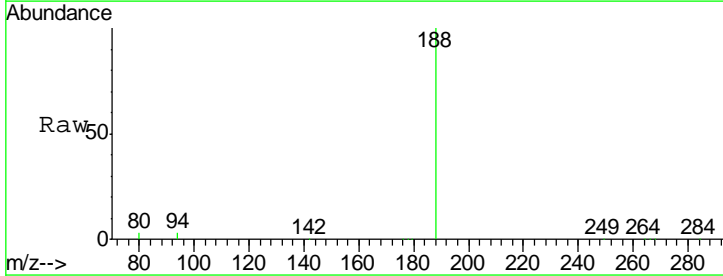
Instrument :
 BNA_E
 ClientSampleId :
 SSTDIC3.2

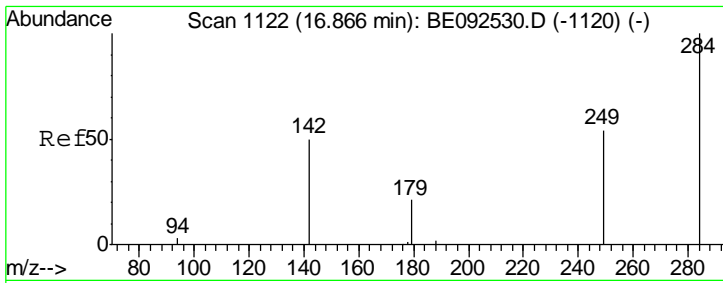
Tgt Ion	Resp	Lower	Upper
166	24454		
165	97.8	78.2	117.4
167	13.4	11.0	16.4



#18
 Phenanthrene-d10
 Concen: 5.00 ng
 RT: 17.56 min Scan# 1152
 Delta R.T. -0.00 min
 Lab File: BE092533.D
 Acq: 16 Nov 2016 13:32

Tgt Ion	Resp	Lower	Upper
188	57266		
94	3.3	3.2	4.8
80	2.7	2.6	3.8

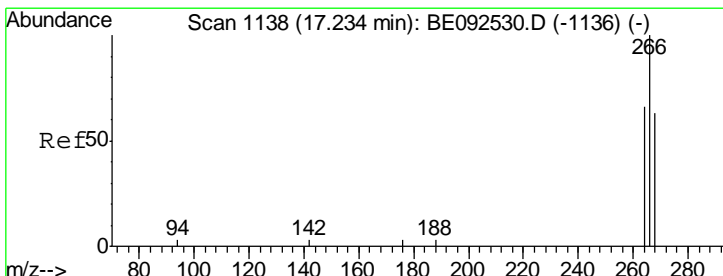
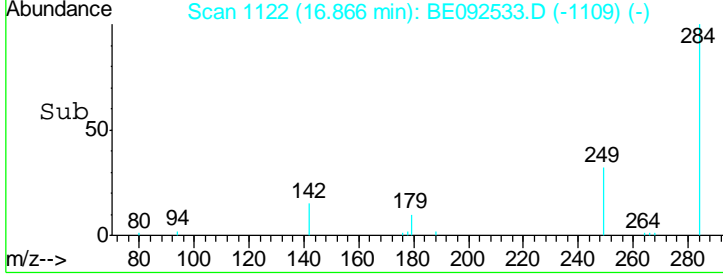
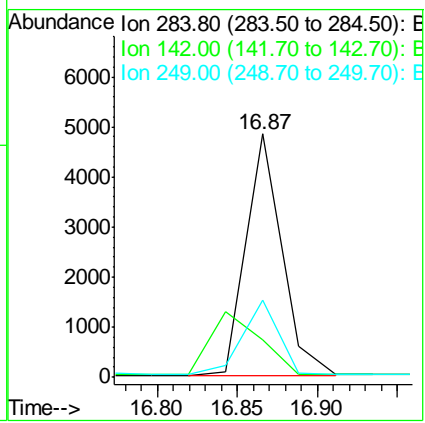
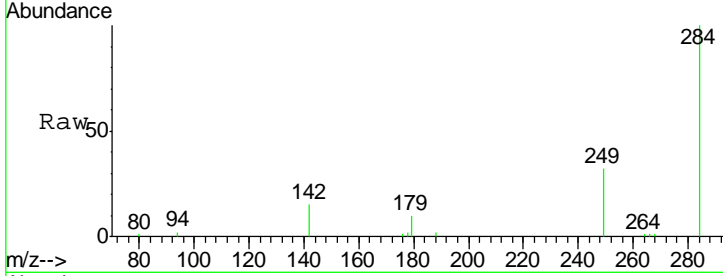




#19
 Hexachlorobenzene
 Concen: 3.52 ng m
 RT: 16.87 min Scan# 1122
 Delta R.T. -0.00 min
 Lab File: BE092533.D
 Acq: 16 Nov 2016 13:32

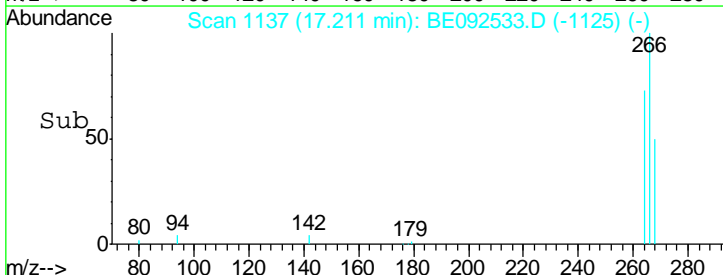
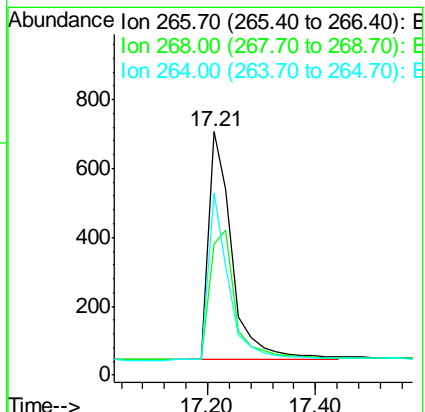
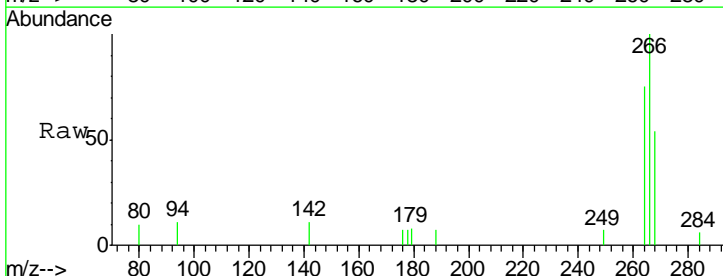
Instrument :
 BNA_E
 ClientSampled :
 SSTDICC3.2

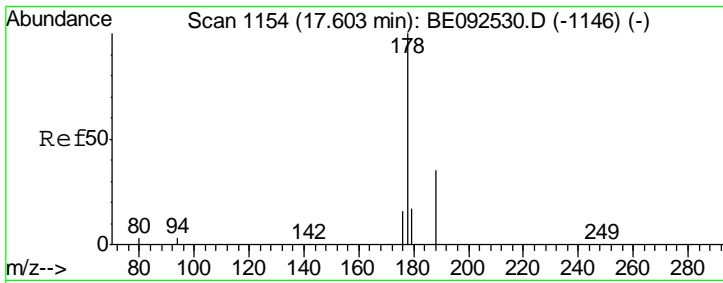
Tgt Ion	Resp	Lower	Upper
284	7613		
284	100		
142	0.0	29.1	43.7#
249	33.3	27.9	41.9



#20
 Pentachlorophenol
 Concen: 3.24 ng
 RT: 17.21 min Scan# 1137
 Delta R.T. -0.02 min
 Lab File: BE092533.D
 Acq: 16 Nov 2016 13:32

Tgt Ion	Resp	Lower	Upper
266	2028		
266	100		
268	53.6	62.5	93.7#
264	74.7	57.2	85.8

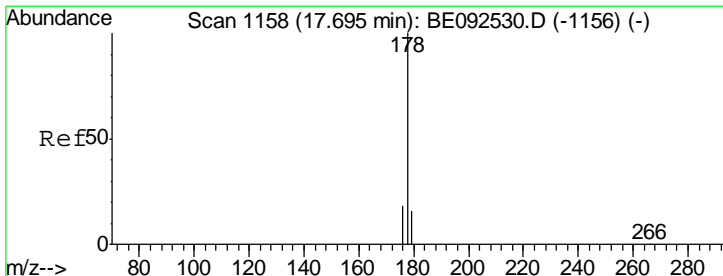
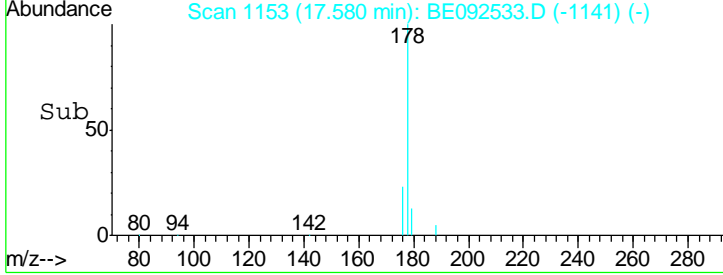
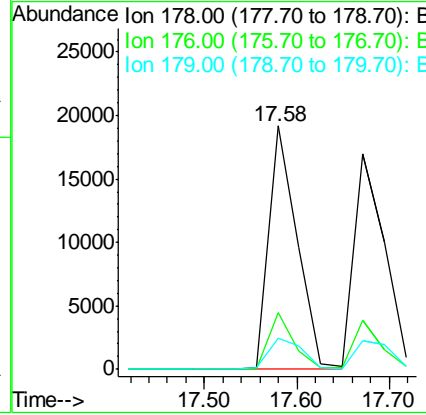
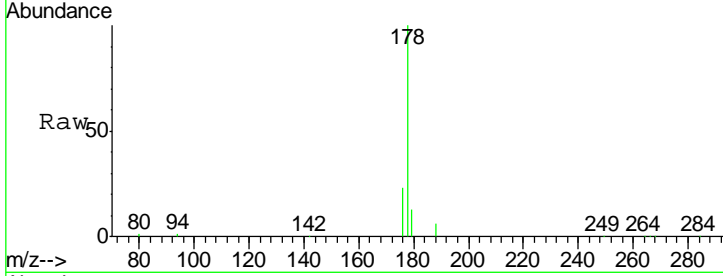




#21
 Phenanthrene
 Concen: 3.29 ng
 RT: 17.58 min Scan# 1153
 Delta R.T. -0.02 min
 Lab File: BE092533.D
 Acq: 16 Nov 2016 13:32

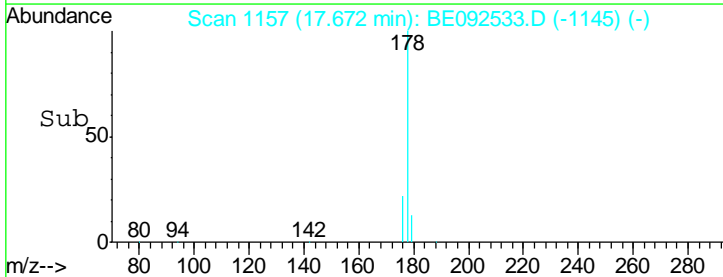
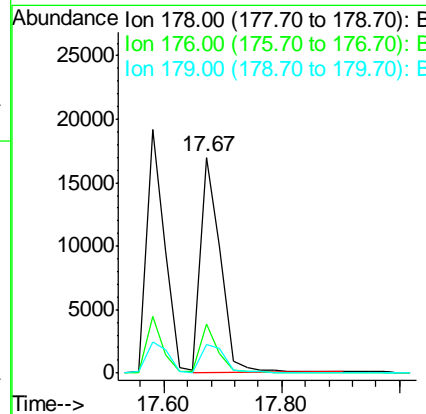
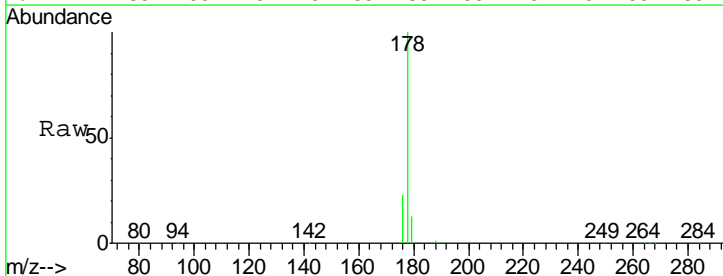
Instrument :
 BNA_E
 ClientSampled :
 SSTDICC3.2

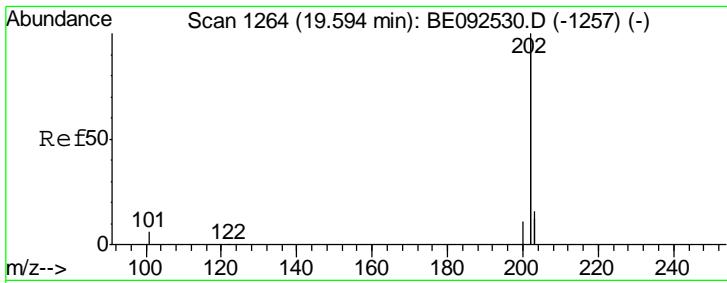
Tgt Ion	Resp	Lower	Upper
178	40719		
176	20.4	15.8	23.8
179	15.0	16.0	24.0#



#22
 Anthracene
 Concen: 3.29 ng
 RT: 17.67 min Scan# 1157
 Delta R.T. -0.02 min
 Lab File: BE092533.D
 Acq: 16 Nov 2016 13:32

Tgt Ion	Resp	Lower	Upper
178	39472		
176	19.5	15.0	22.4
179	15.2	12.2	18.2



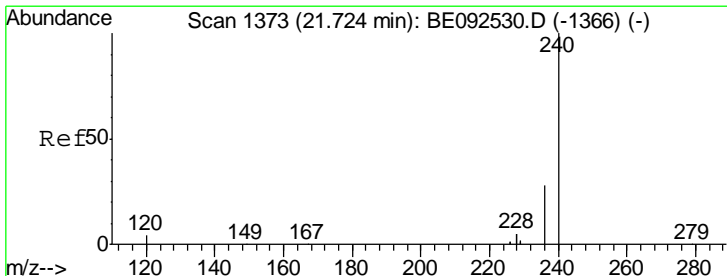
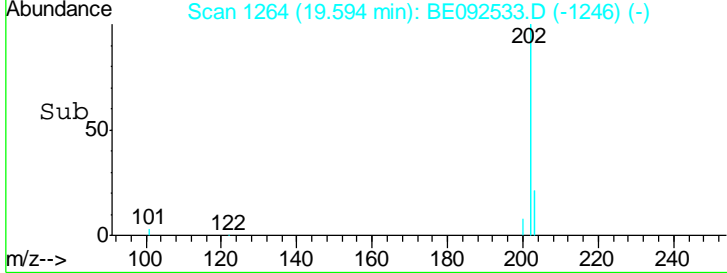
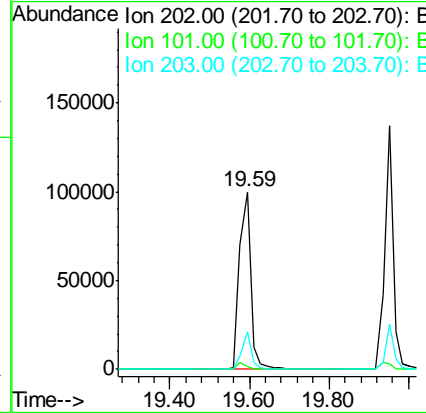
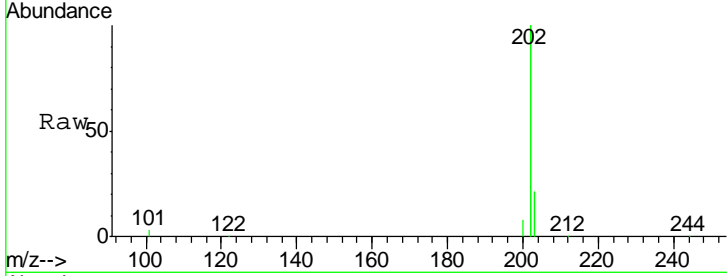


#23
 Fluoranthene
 Concen: 3.13 ng
 RT: 19.59 min Scan# 1264
 Delta R.T. 0.00 min
 Lab File: BE092533.D
 Acq: 16 Nov 2016 13:32

Instrument :
 BNA_E
 ClientSampled :
 SSTDICC3.2

Tgt Ion: 202 Resp: 194510

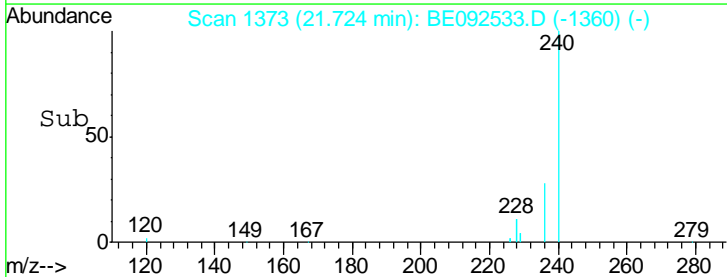
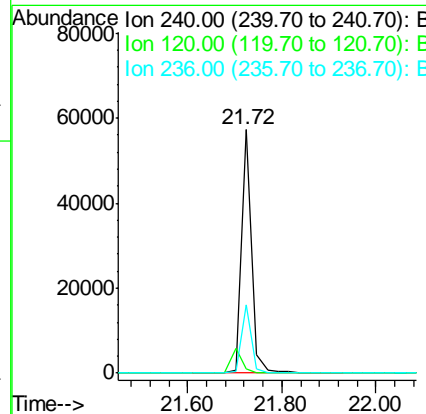
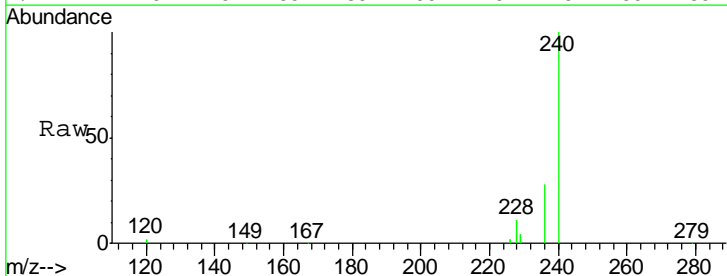
Ion	Ratio	Lower	Upper
202	100		
101	2.9	2.2	3.4
203	17.4	13.7	20.5

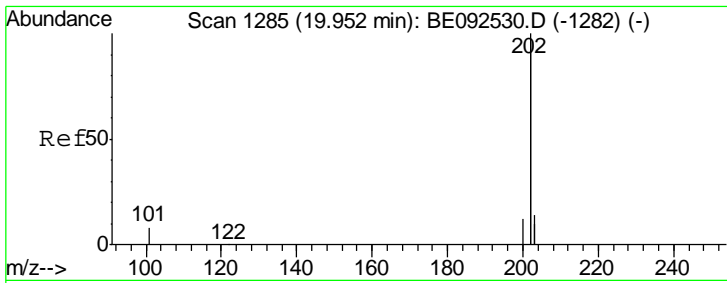


#24
 Chrysene-d12
 Concen: 5.00 ng
 RT: 21.72 min Scan# 1373
 Delta R.T. 0.00 min
 Lab File: BE092533.D
 Acq: 16 Nov 2016 13:32

Tgt Ion: 240 Resp: 86775

Ion	Ratio	Lower	Upper
240	100		
120	1.9	2.6	4.0#
236	27.9	24.6	37.0

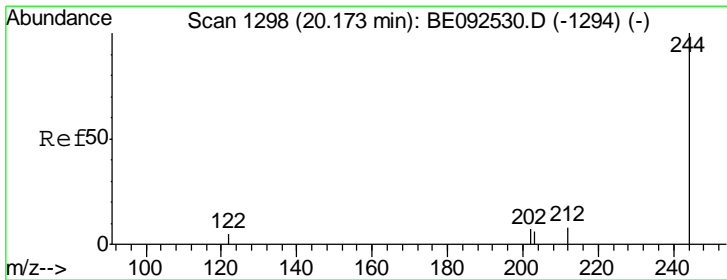
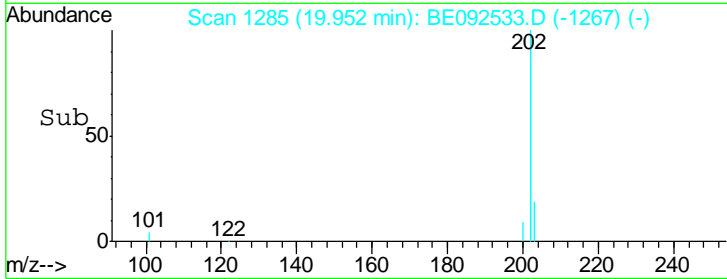
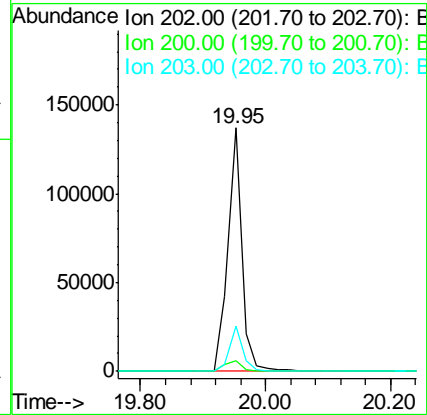
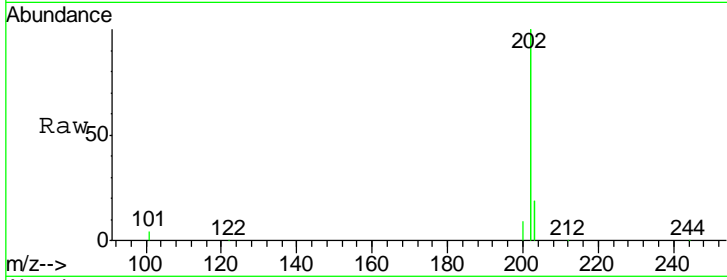




#25
 Pyrene
 Concen: 2.96 ng
 RT: 19.95 min Scan# 1285
 Delta R.T. 0.00 min
 Lab File: BE092533.D
 Acq: 16 Nov 2016 13:32

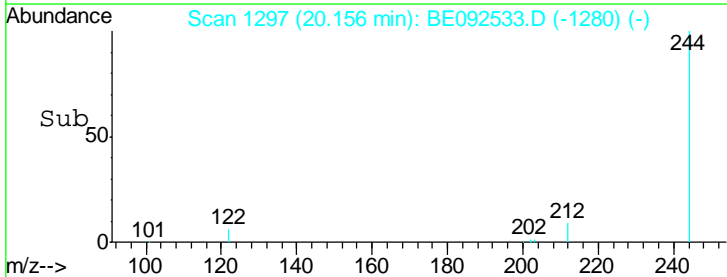
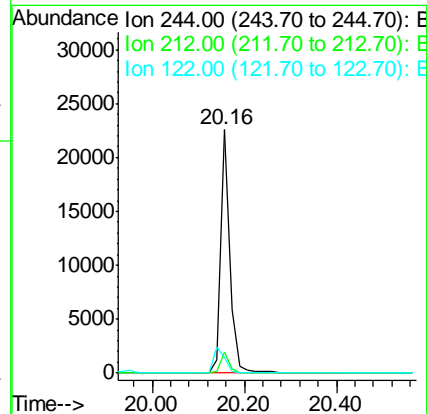
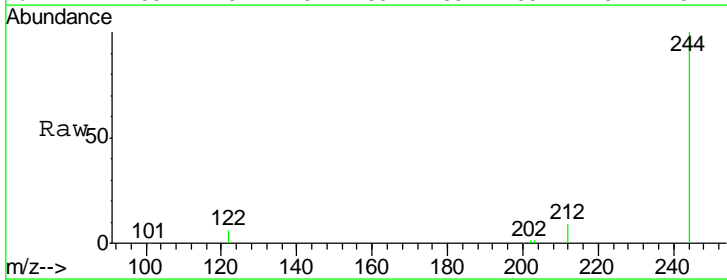
Instrument :
 BNA_E
 ClientSampled :
 SSTDICC3.2

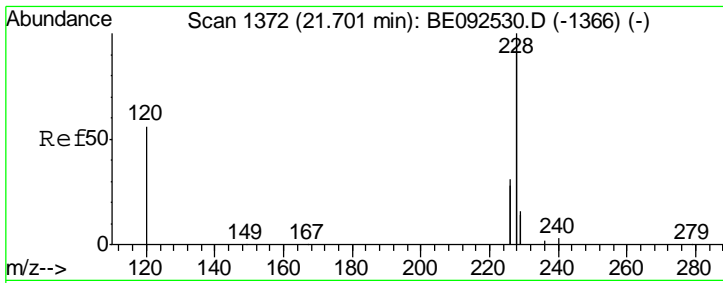
Tgt Ion	Resp	Lower	Upper
202	100		
200	5.3	4.2	6.4
203	17.6	13.9	20.9



#26
 Terphenyl-d14
 Concen: 2.99 ng
 RT: 20.16 min Scan# 1297
 Delta R.T. -0.02 min
 Lab File: BE092533.D
 Acq: 16 Nov 2016 13:32

Tgt Ion	Resp	Lower	Upper
244	100		
212	8.7	6.7	10.1
122	6.4	3.6	5.4#

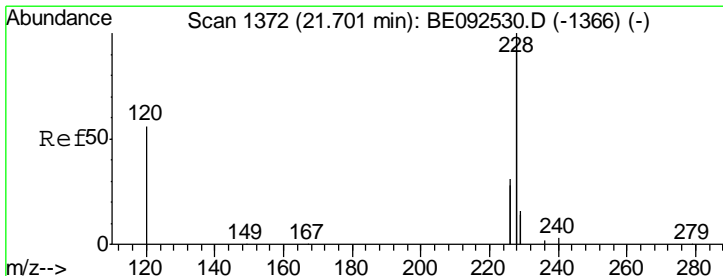
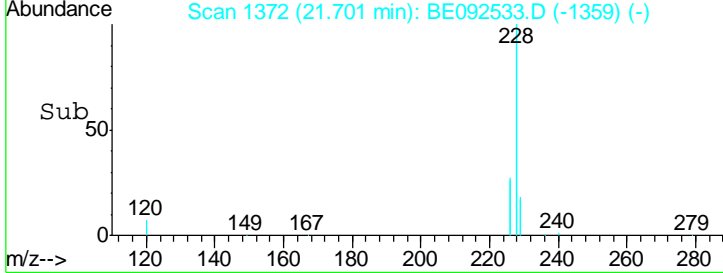
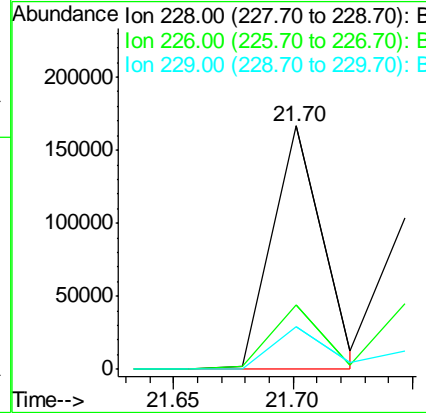
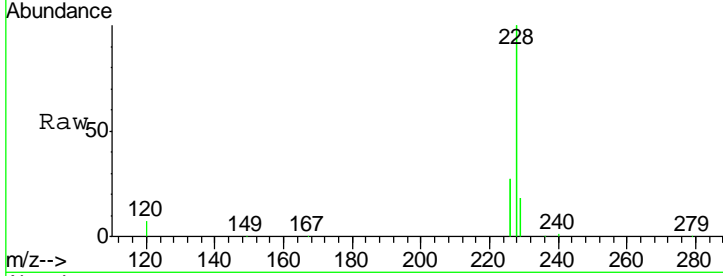




#27
 Benzo(a)anthracene
 Concen: 2.81 ng m
 RT: 21.70 min Scan# 1372
 Delta R.T. 0.00 min
 Lab File: BE092533.D
 Acq: 16 Nov 2016 13:32

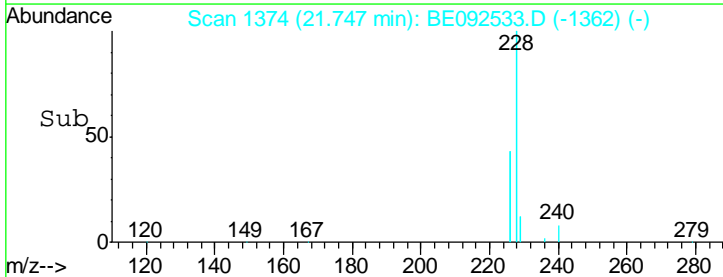
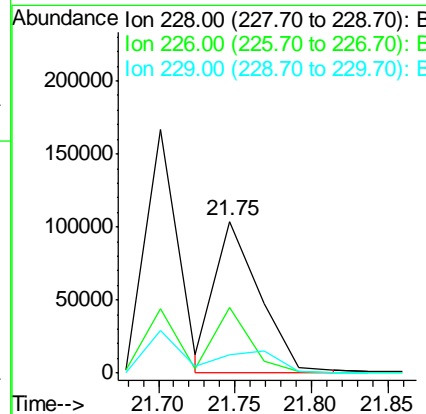
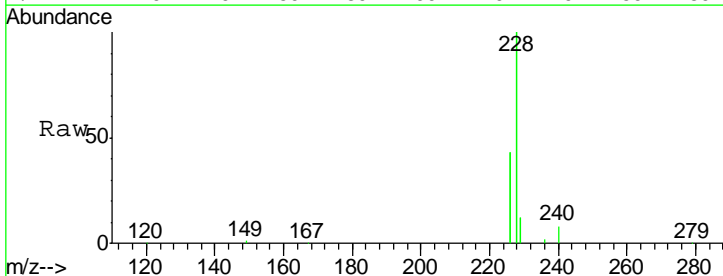
Instrument :
 BNA_E
 ClientSampled :
 SSTDICC3.2

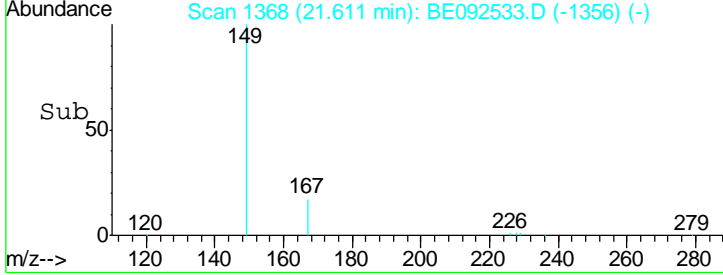
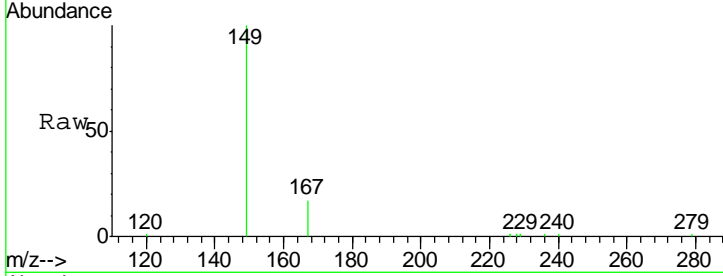
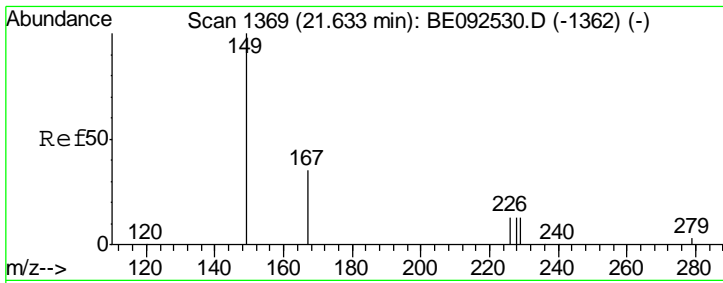
Tgt Ion	Resp	Lower	Upper
228	246983		
226	26.5	23.6	35.4
229	17.5	13.3	19.9



#28
 Chrysene
 Concen: 2.26 ng m
 RT: 21.75 min Scan# 1374
 Delta R.T. -0.02 min
 Lab File: BE092533.D
 Acq: 16 Nov 2016 13:32

Tgt Ion	Resp	Lower	Upper
228	213450		
226	43.4	36.3	54.5
229	12.2	10.6	16.0

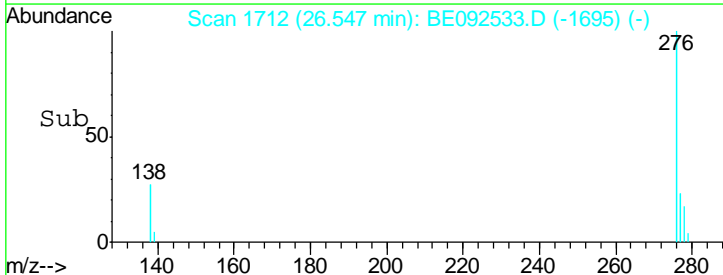
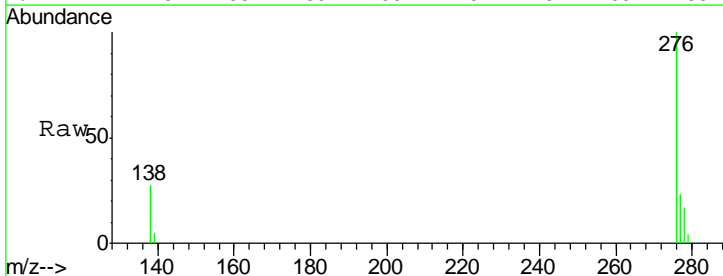
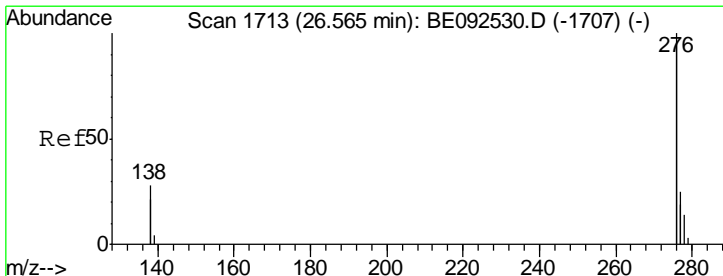
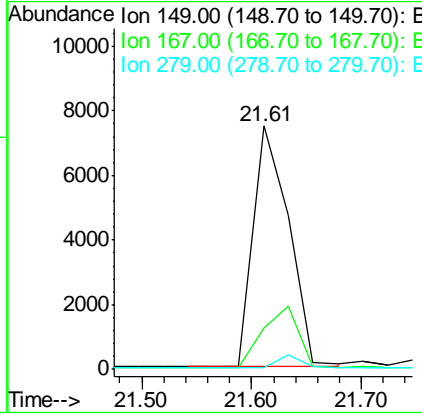




#29
 Bis(2-ethylhexyl)phthalate
 Concen: 1.80 ng
 RT: 21.61 min Scan# 1368
 Delta R.T. -0.02 min
 Lab File: BE092533.D
 Acq: 16 Nov 2016 13:32

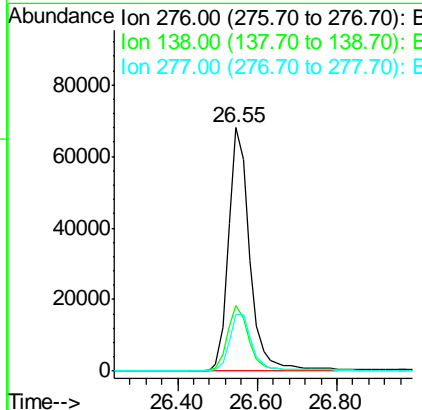
Instrument :
 BNA_E
 ClientSampleId :
 SSTDICC3.2

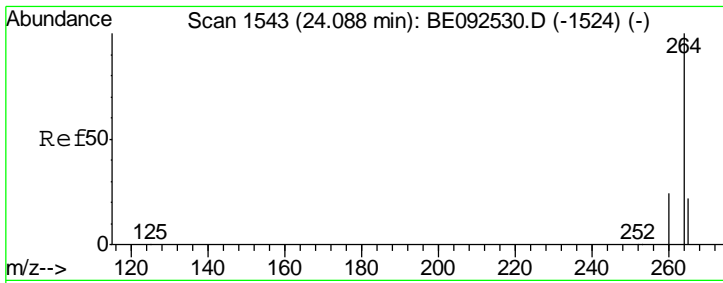
Tgt Ion	Resp	Lower	Upper
149	16691		
167	0.0	16.0	24.0#
279	0.0	16.0	24.0#



#30
 Indeno(1,2,3-cd)pyrene
 Concen: 2.58 ng
 RT: 26.55 min Scan# 1712
 Delta R.T. -0.02 min
 Lab File: BE092533.D
 Acq: 16 Nov 2016 13:32

Tgt Ion	Resp	Lower	Upper
276	247803		
138	27.4	20.3	30.5
277	24.7	19.7	29.5



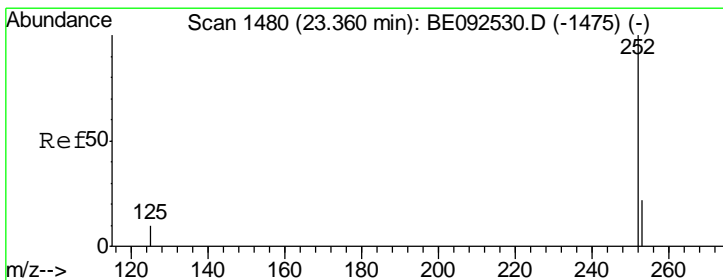
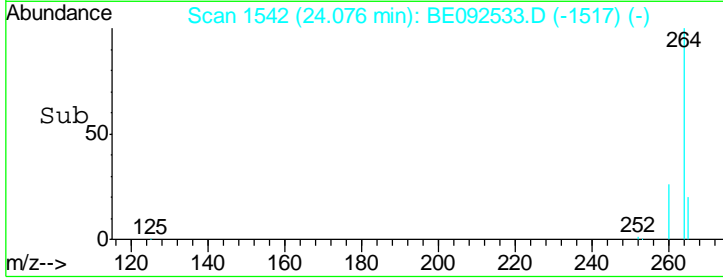
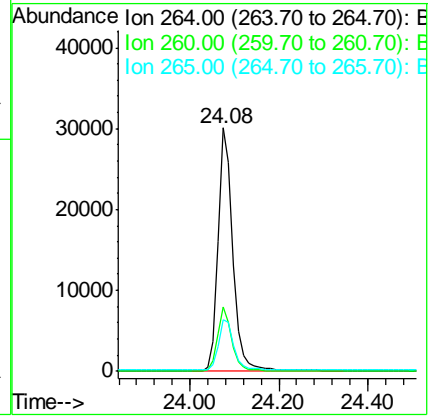
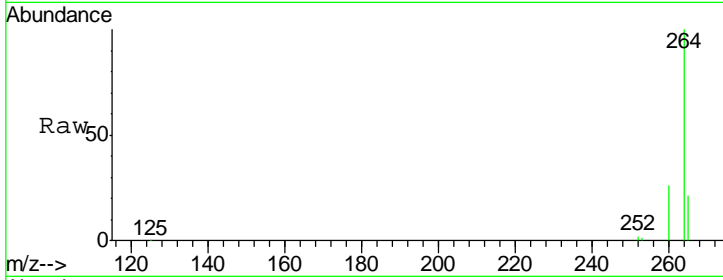


#31
 Perylene-d12
 Concen: 5.00 ng
 RT: 24.08 min Scan# 1542
 Delta R.T. -0.01 min
 Lab File: BE092533.D
 Acq: 16 Nov 2016 13:32

Instrument :
 BNA_E
 ClientSampleId :
 SSTDICC3.2

Tgt Ion: 264 Resp: 69352

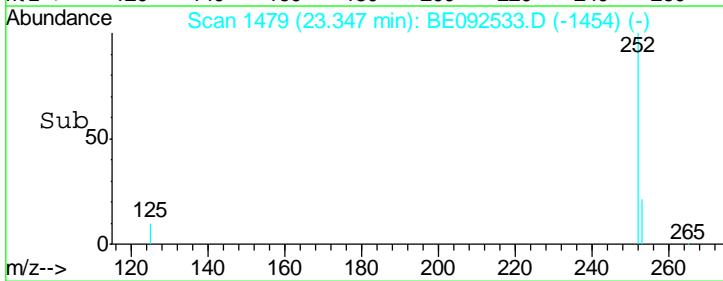
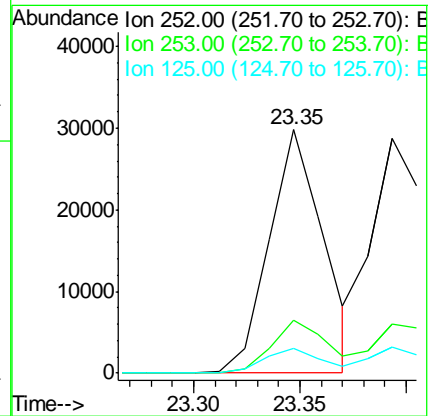
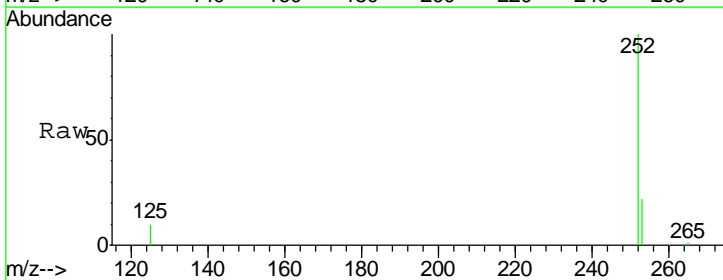
Ion	Ratio	Lower	Upper
264	100		
260	26.4	20.1	30.1
265	21.0	17.9	26.9

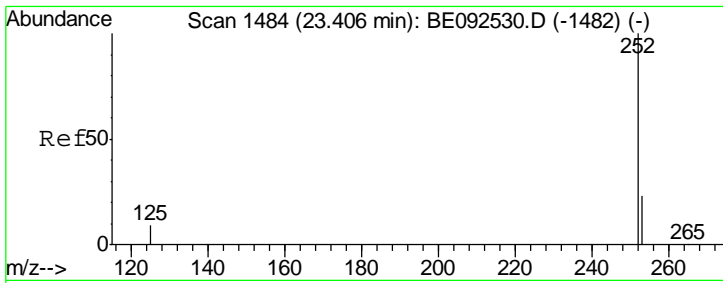


#32
 Benzo(b)fluoranthene
 Concen: 2.04 ng m
 RT: 23.35 min Scan# 1479
 Delta R.T. -0.01 min
 Lab File: BE092533.D
 Acq: 16 Nov 2016 13:32

Tgt Ion: 252 Resp: 53246

Ion	Ratio	Lower	Upper
252	100		
253	21.6	18.7	28.1
125	10.4	10.5	15.7#

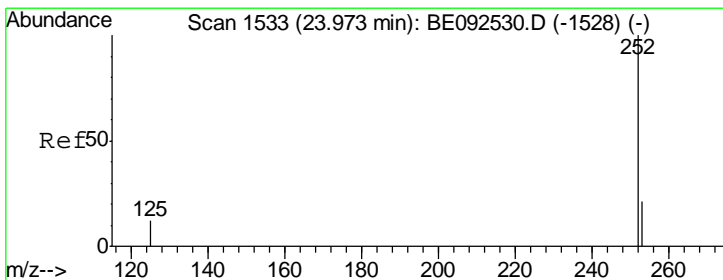
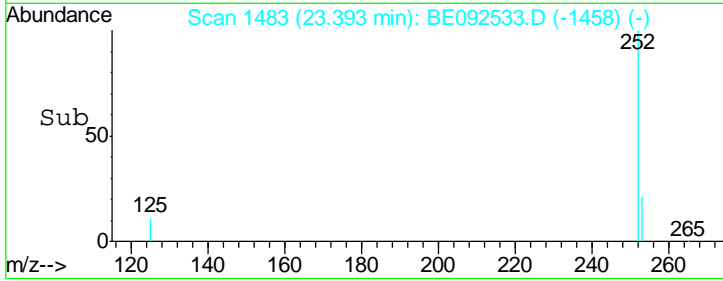
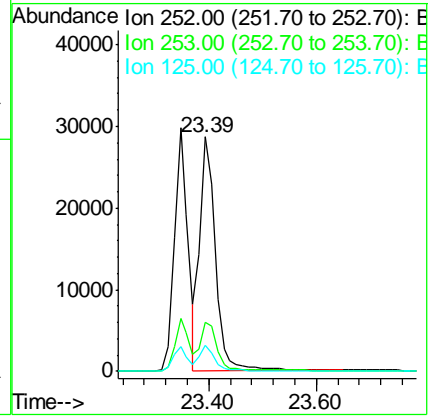
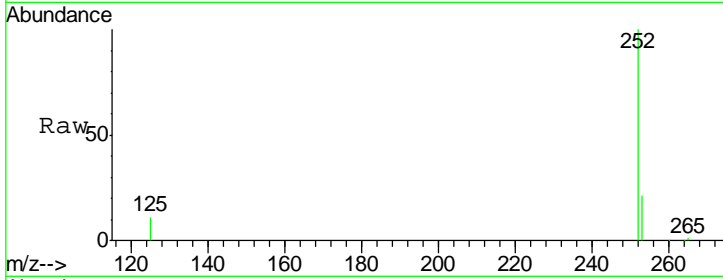




#33
 Benzo(k)fluoranthene
 Concen: 2.07 ng
 RT: 23.39 min Scan# 1483
 Delta R.T. -0.01 min
 Lab File: BE092533.D
 Acq: 16 Nov 2016 13:32

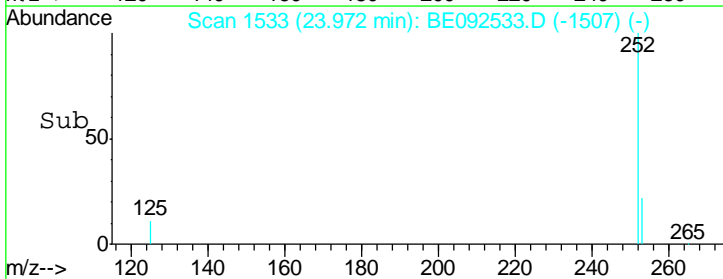
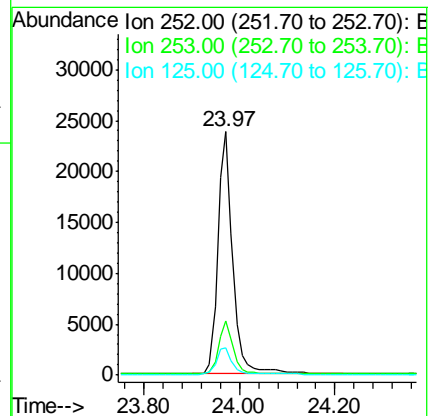
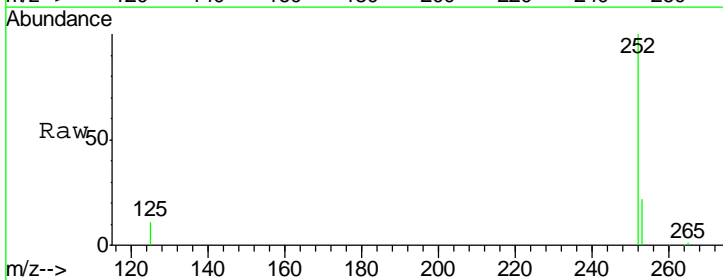
Instrument : BNA_E
 ClientSampleId : SSTDICC3.2

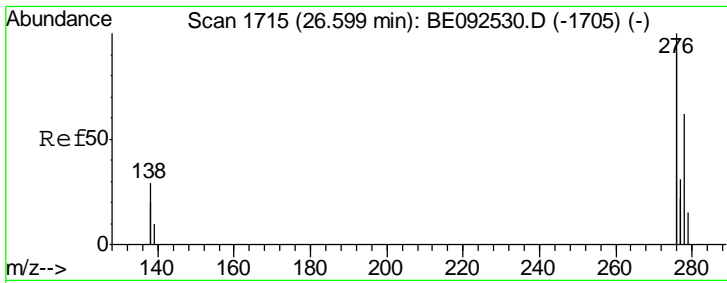
Tgt Ion	Resp	Lower	Upper
252	56639		
253	21.0	20.3	30.5
125	11.1	9.6	14.4



#34
 Benzo(a)pyrene
 Concen: 2.93 ng
 RT: 23.97 min Scan# 1533
 Delta R.T. -0.00 min
 Lab File: BE092533.D
 Acq: 16 Nov 2016 13:32

Tgt Ion	Resp	Lower	Upper
252	52575		
253	22.1	19.0	28.6
125	11.2	11.8	17.8#

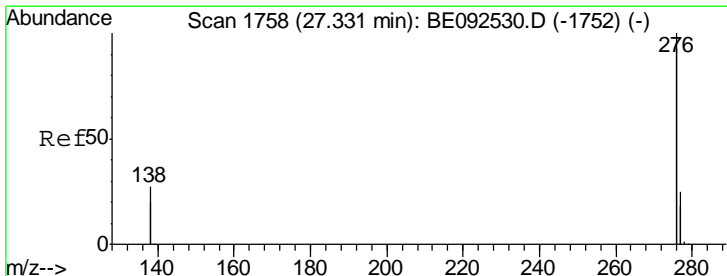
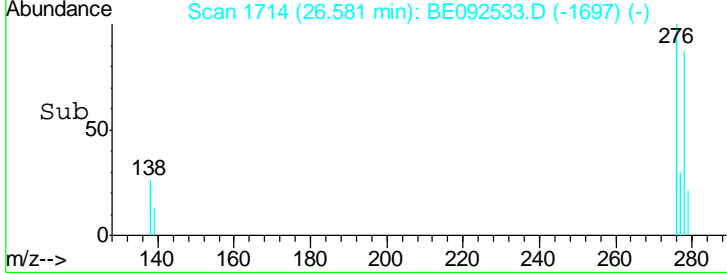
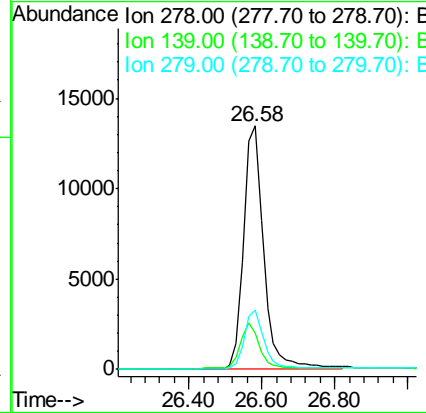
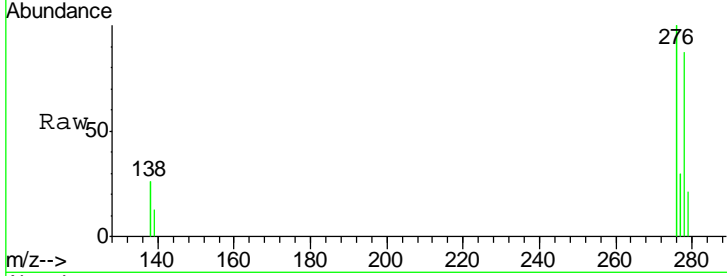




#35
 Dibenzo(a,h)anthracene
 Concen: 2.99 ng
 RT: 26.58 min Scan# 1714
 Delta R.T. -0.02 min
 Lab File: BE092533.D
 Acq: 16 Nov 2016 13:32

Instrument :
 BNA_E
 ClientSampled :
 SSTDICC3.2

Tgt Ion	Resp	Lower	Upper
278	50500		
278	100		
139	15.0	13.8	20.8
279	24.2	21.4	32.2



#36
 Benzo(g,h,i)perylene
 Concen: 2.99 ng
 RT: 27.31 min Scan# 1757
 Delta R.T. -0.02 min
 Lab File: BE092533.D
 Acq: 16 Nov 2016 13:32

Tgt Ion	Resp	Lower	Upper
276	207960		
276	100		
277	23.6	19.8	29.8
138	23.2	19.8	29.6

