

Data Path : Z:\HPCHEM1\BNA E\DATA\BE111616\  
 Data File : BE092547.D  
 Acq On : 16 Nov 2016 23:25  
 Operator : UM/SJ  
 Sample : H5636-07  
 Misc :  
 ALS Vial : 11 Sample Multiplier: 1

Instrument :  
 BNA\_E  
 ClientSampleId :  
 C19033041

Quant Time: Nov 17 05:07:07 2016  
 Quant Method : Z:\HPCHEM1\BNA E\METHODS\8270-SIM-BE111616.M  
 Quant Title : ASP BNA STANDARDS FOR 5 POINT CALIBRATION  
 QLast Update : Wed Nov 16 15:43:18 2016  
 Response via : Initial Calibration

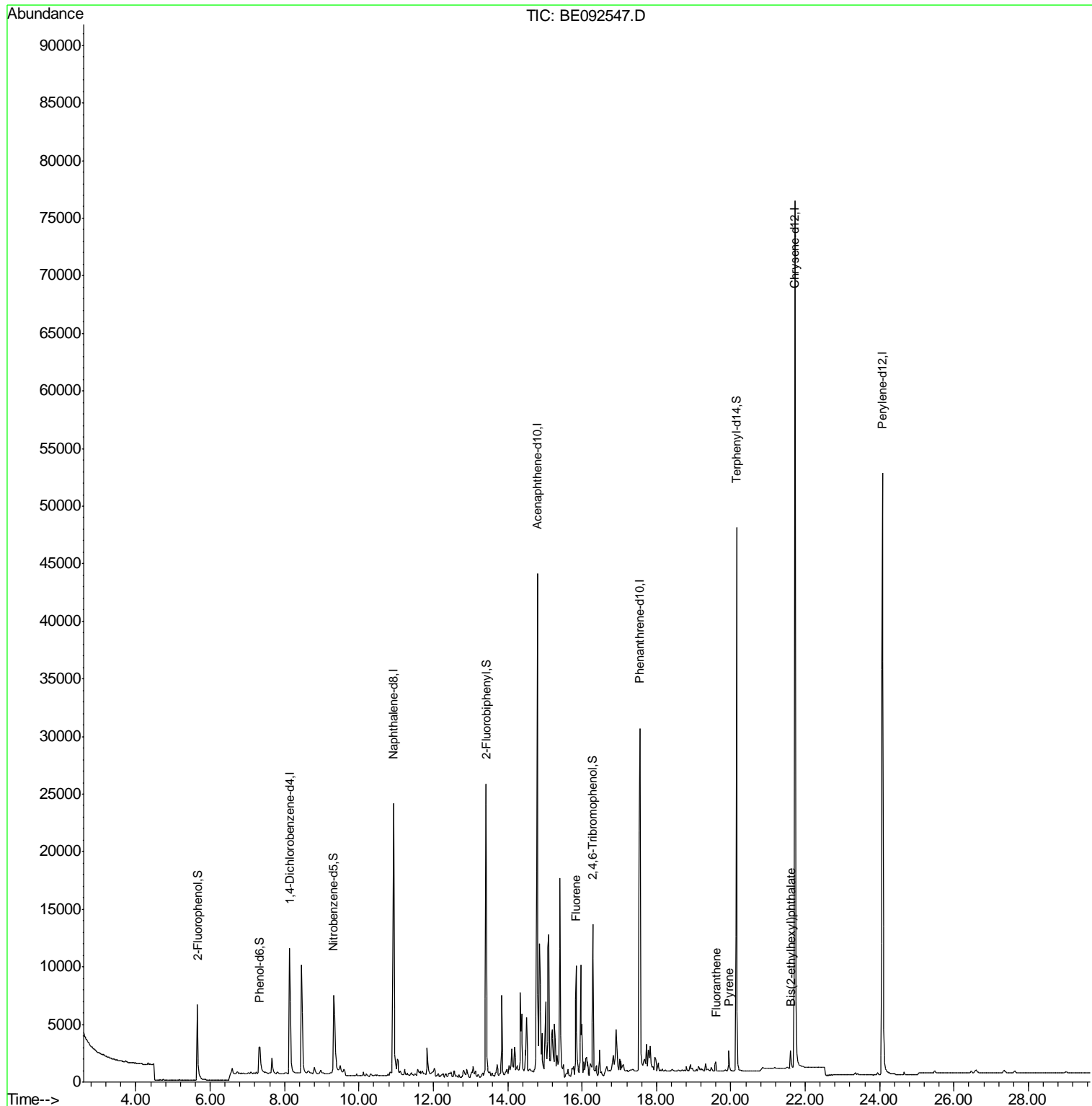
Internal Standards	R.T.	QIon	Response	Conc	Units	Dev(Min)
1) 1,4-Dichlorobenzene-d4	8.14	152	7793	5.00	ng	-0.02
7) Naphthalene-d8	10.93	136	37545	5.00	ng	0.00
12) Acenaphthene-d10	14.80	164	27323	5.00	ng	0.00
18) Phenanthrene-d10	17.56	188	58552	5.00	ng	0.00
24) Chrysene-d12	21.72	240	88166	5.00	ng	0.00
31) Perylene-d12	24.08	264	75990	5.00	ng	-0.01
System Monitoring Compounds						
4) 2-Fluorophenol	5.65	112	6855	5.21	ng	-0.02
5) Phenol-d6	7.34	99	5331	2.51	ng	-0.02
8) Nitrobenzene-d5	9.32	82	11136	4.58	ng	-0.05
13) 2,4,6-Tribromophenol	16.28	330	8648	14.11	ng	-0.02
14) 2-Fluorobiphenyl	13.42	172	29724	4.46	ng	-0.01
26) Terphenyl-d14	20.16	244	54553	5.41	ng	-0.02
Target Compounds						
17) Fluorene	15.84	166	7089	0.92	ng	# 92
23) Fluoranthene	19.59	202	1272	0.02	ng	94
25) Pyrene	19.95	202	2216	0.03	ng	# 82
29) Bis(2-ethylhexyl)phthalate	21.61	149	2062	0.47	ng	# 71

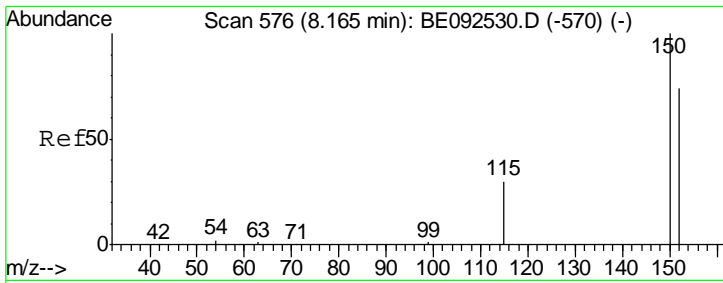
(#) = qualifier out of range (m) = manual integration (+) = signals summed

Data Path : Z:\HPCHEM1\BNA E\DATA\BE111616\  
 Data File : BE092547.D  
 Acq On : 16 Nov 2016 23:25  
 Operator : UM/SJ  
 Sample : H5636-07  
 Misc :  
 ALS Vial : 11 Sample Multiplier: 1

Instrument :  
 BNA\_E  
 ClientSampled :  
 C19033041

Quant Time: Nov 17 05:07:07 2016  
 Quant Method : Z:\HPCHEM1\BNA E\METHODS\8270-SIM-BE111616.M  
 Quant Title : ASP BNA STANDARDS FOR 5 POINT CALIBRATION  
 QLast Update : Wed Nov 16 15:43:18 2016  
 Response via : Initial Calibration

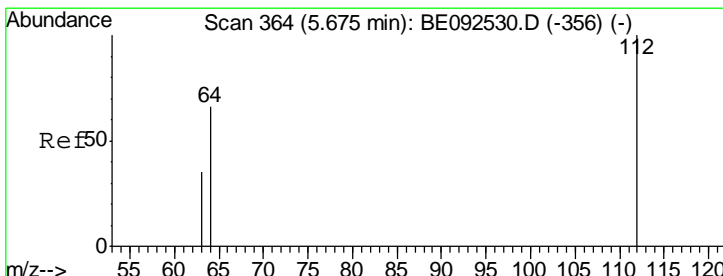
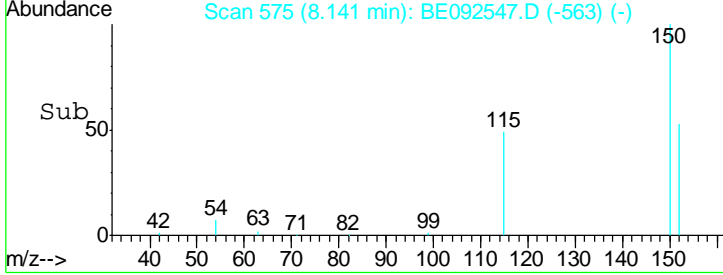
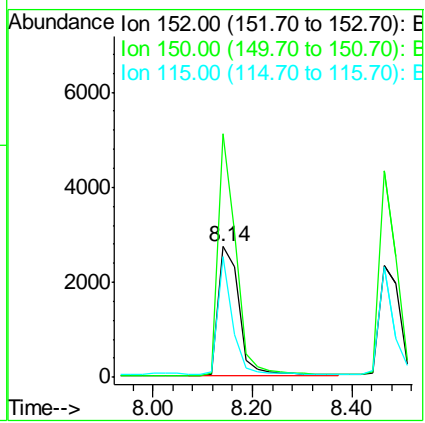
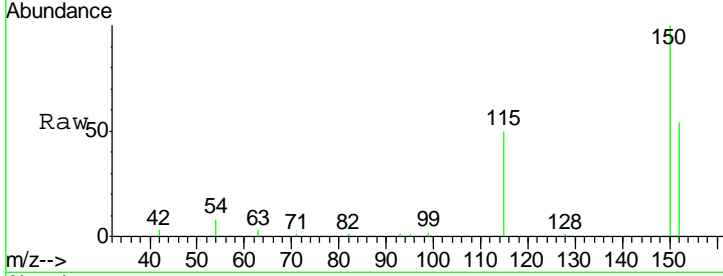




#1  
 1,4-Dichlorobenzene-d4  
 Concen: 5.00 ng  
 RT: 8.14 min Scan# 575  
 Delta R.T. -0.02 min  
 Lab File: BE092547.D  
 Acq: 16 Nov 2016 23:25

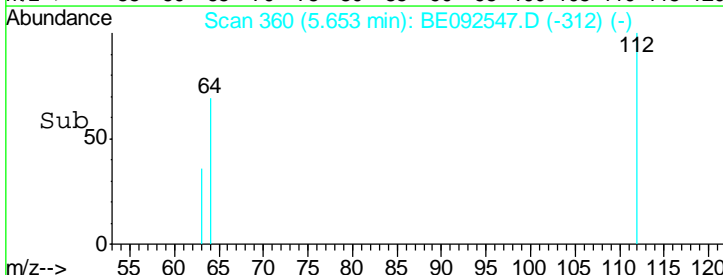
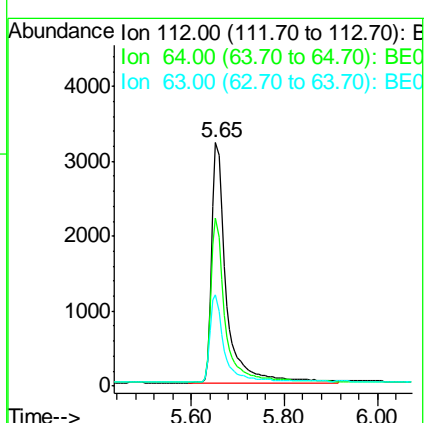
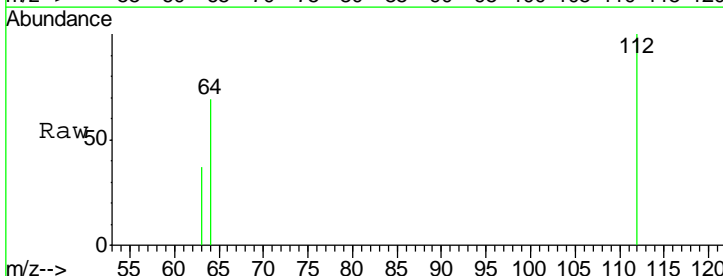
**Instrument :**  
 BNA\_E  
**ClientSampled :**  
 C19033041

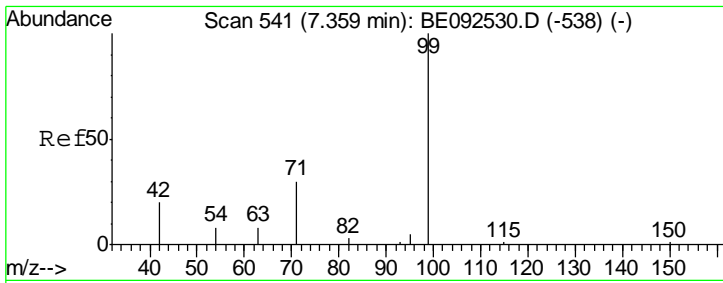
Tgt Ion	Resp	Lower	Upper
152	100		
150	186.7	106.0	159.0#
115	92.6	31.2	46.8#



#4  
 2-Fluorophenol  
 Concen: 5.21 ng  
 RT: 5.65 min Scan# 360  
 Delta R.T. -0.02 min  
 Lab File: BE092547.D  
 Acq: 16 Nov 2016 23:25

Tgt Ion	Resp	Lower	Upper
112	100		
64	68.2	53.5	80.3
63	36.3	27.9	41.9

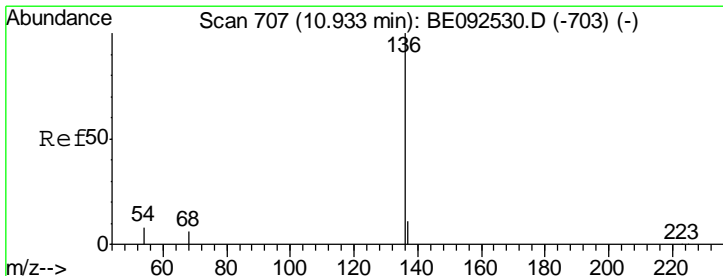
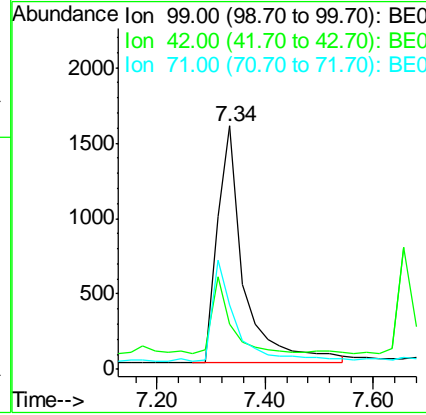
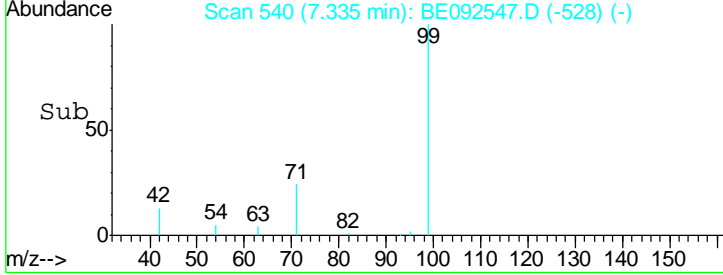
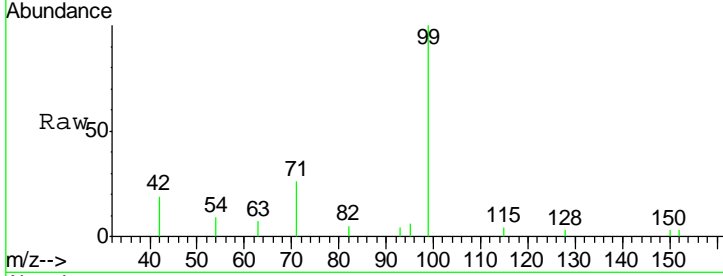




#5  
 Phenol-d6  
 Concen: 2.51 ng  
 RT: 7.34 min Scan# 540  
 Delta R.T. -0.02 min  
 Lab File: BE092547.D  
 Acq: 16 Nov 2016 23:25

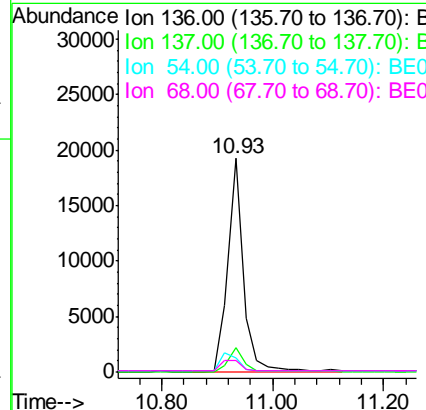
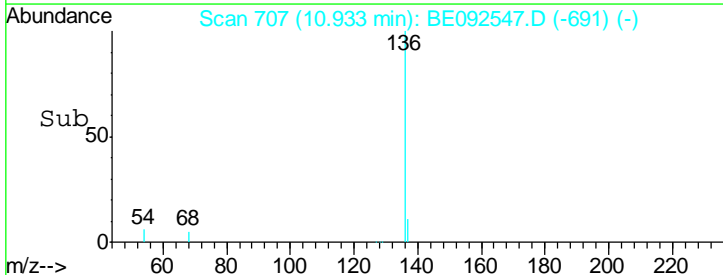
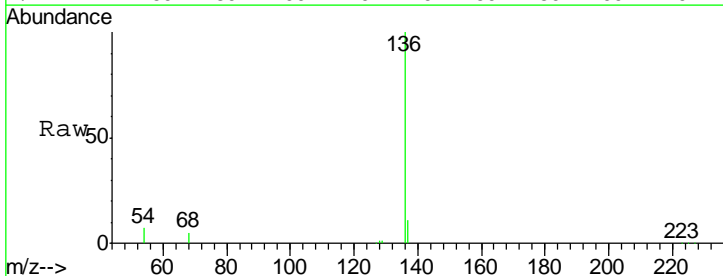
Instrument :  
 BNA\_E  
 ClientSampleId :  
 C19033041

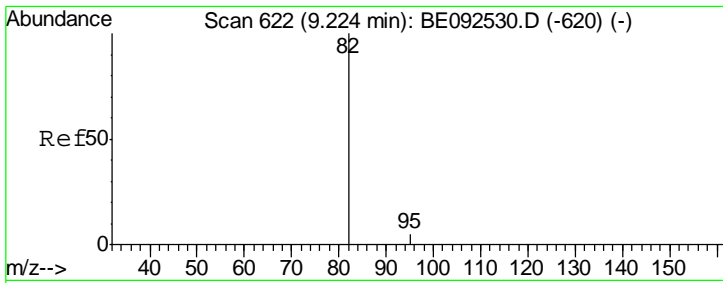
Tgt Ion	Resp	Lower	Upper
99	5331		
42	0.0	16.0	24.0#
71	0.0	30.6	45.8#



#7  
 Naphthalene-d8  
 Concen: 5.00 ng  
 RT: 10.93 min Scan# 707  
 Delta R.T. -0.00 min  
 Lab File: BE092547.D  
 Acq: 16 Nov 2016 23:25

Tgt Ion	Resp	Lower	Upper
136	37545		
137	11.3	8.2	12.4
54	6.8	9.6	14.4#
68	5.2	6.7	10.1#

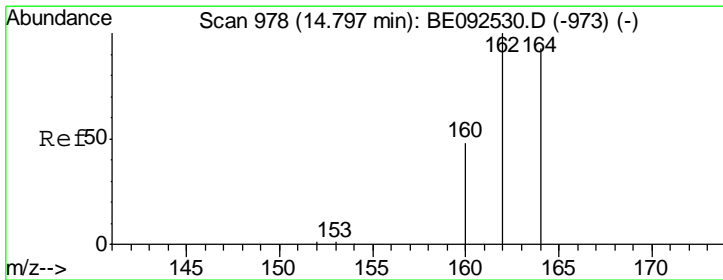
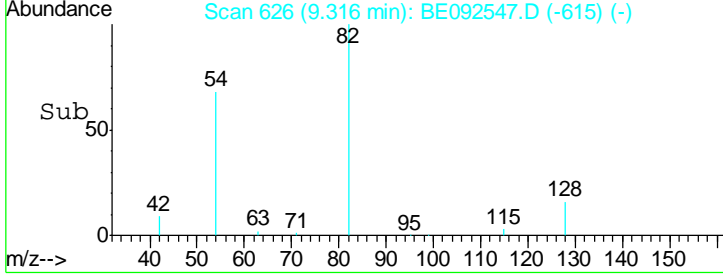
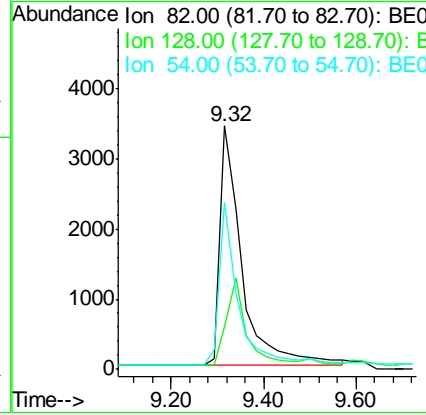
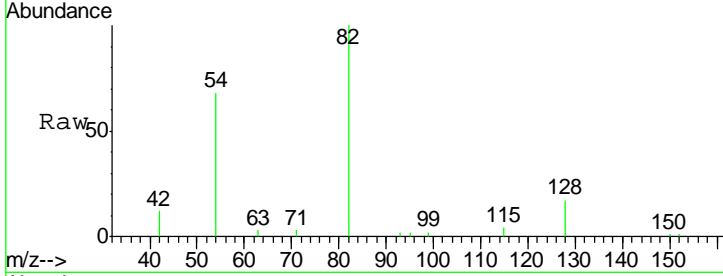




#8  
 Nitrobenzene-d5  
 Concen: 4.58 ng  
 RT: 9.32 min Scan# 626  
 Delta R.T. -0.05 min  
 Lab File: BE092547.D  
 Acq: 16 Nov 2016 23:25

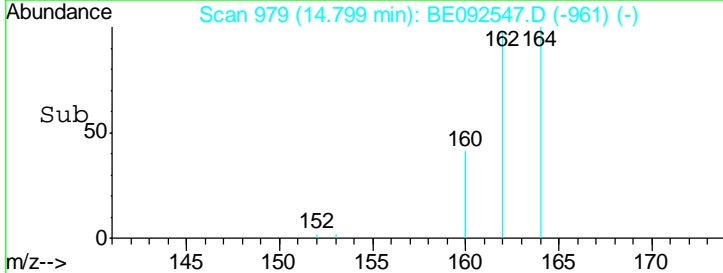
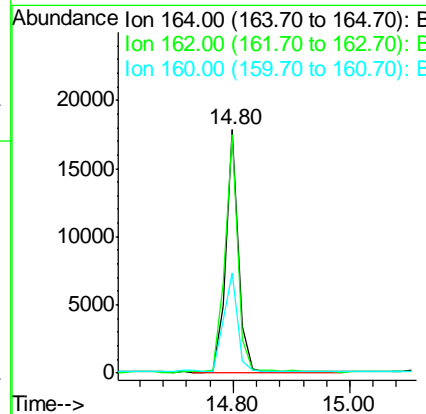
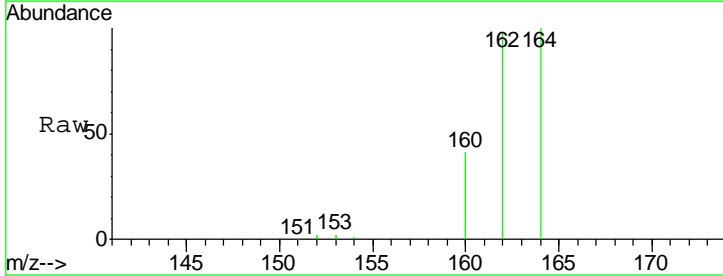
Instrument :  
 BNA\_E  
 ClientSampleID :  
 C19033041

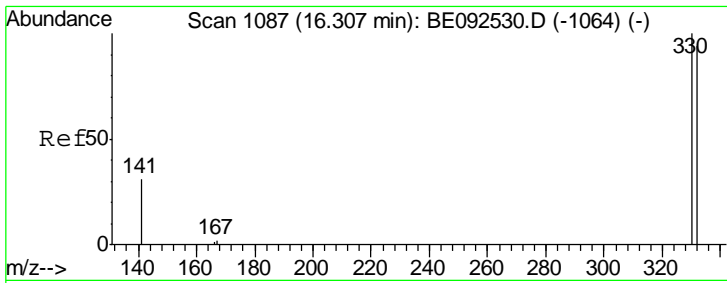
Tgt Ion	Resp	Lower	Upper
82	11136		
128	17.4	39.0	58.4#
54	68.3	44.8	67.2#



#12  
 Acenaphthene-d10  
 Concen: 5.00 ng  
 RT: 14.80 min Scan# 979  
 Delta R.T. 0.00 min  
 Lab File: BE092547.D  
 Acq: 16 Nov 2016 23:25

Tgt Ion	Resp	Lower	Upper
164	27323		
162	98.1	71.4	107.0
160	41.3	27.4	41.2#

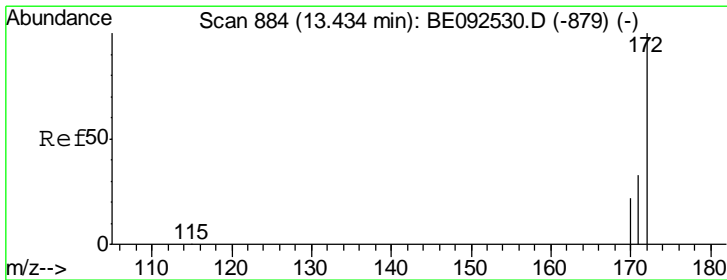
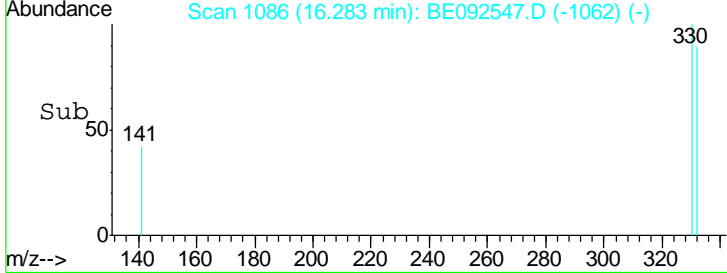
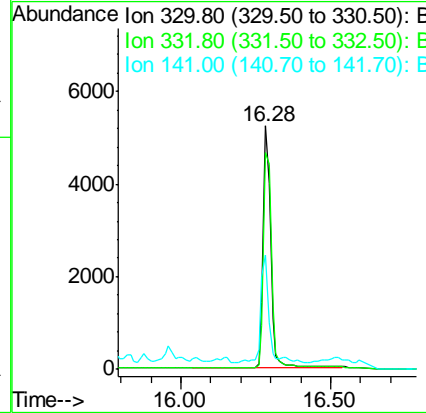
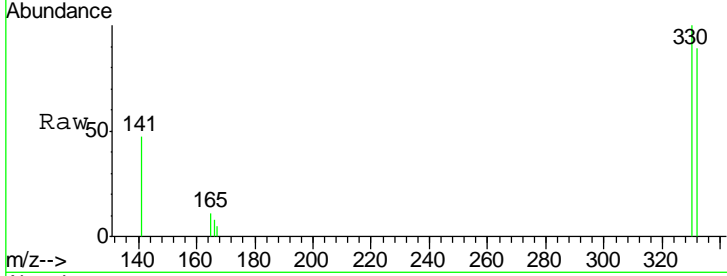




#13  
 2,4,6-Tribromophenol  
 Concen: 14.11 ng  
 RT: 16.28 min Scan# 1086  
 Delta R.T. -0.02 min  
 Lab File: BE092547.D  
 Acq: 16 Nov 2016 23:25

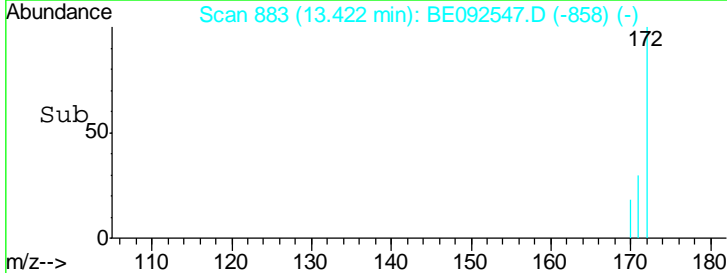
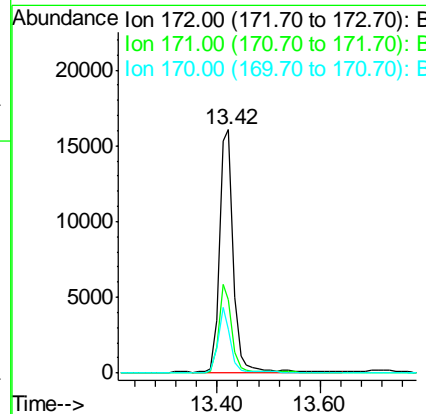
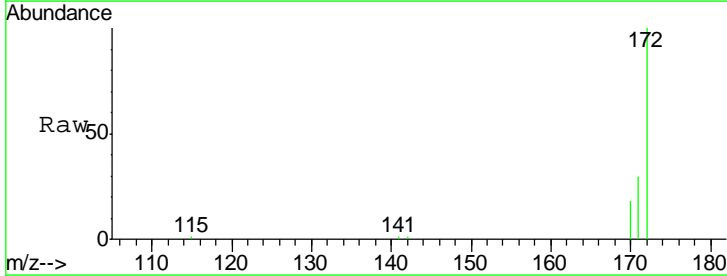
Instrument :  
 BNA\_E  
 ClientSampled :  
 C19033041

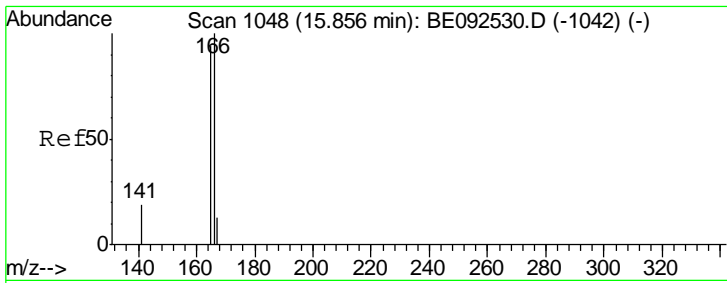
Tgt Ion	Resp	Lower	Upper
330	100		
332	97.4	75.4	113.0
141	48.1	31.0	46.6#



#14  
 2-Fluorobiphenyl  
 Concen: 4.46 ng  
 RT: 13.42 min Scan# 883  
 Delta R.T. -0.01 min  
 Lab File: BE092547.D  
 Acq: 16 Nov 2016 23:25

Tgt Ion	Resp	Lower	Upper
172	100		
171	30.1	30.1	45.1
170	18.0	21.8	32.6#

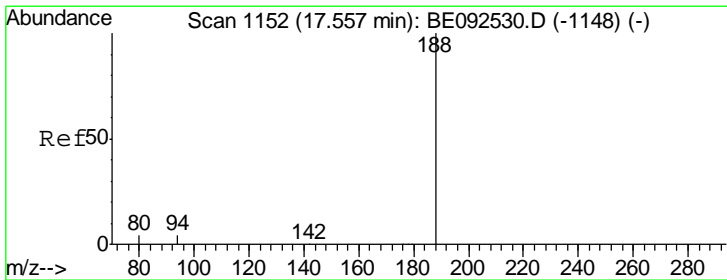
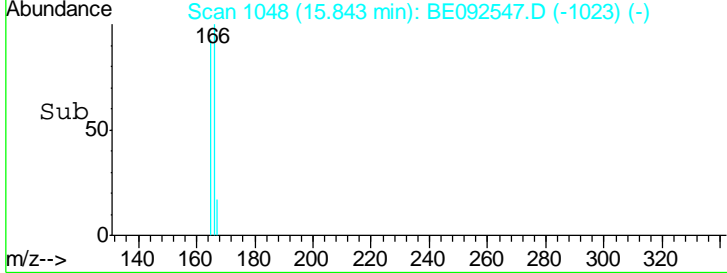
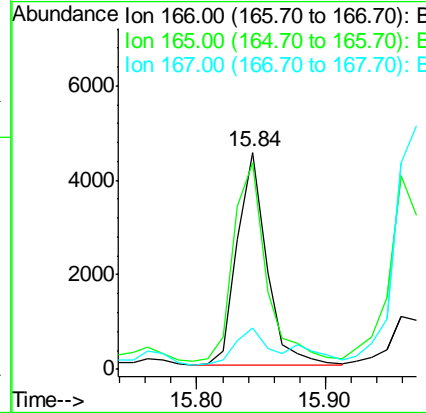
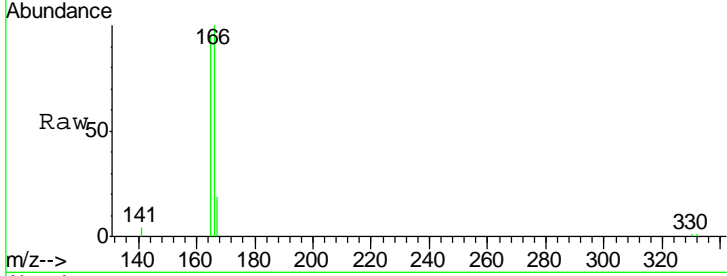




#17  
 Fluorene  
 Concen: 0.92 ng  
 RT: 15.84 min Scan# 1048  
 Delta R.T. -0.01 min  
 Lab File: BE092547.D  
 Acq: 16 Nov 2016 23:25

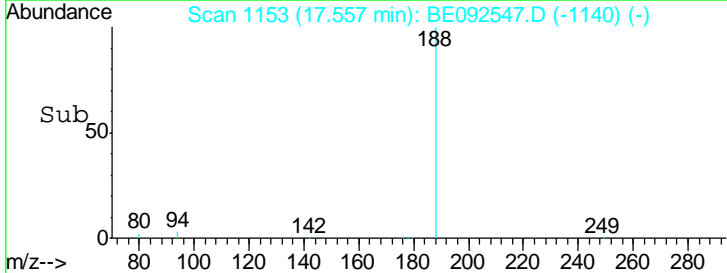
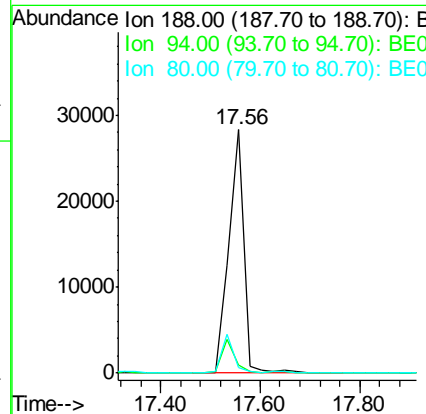
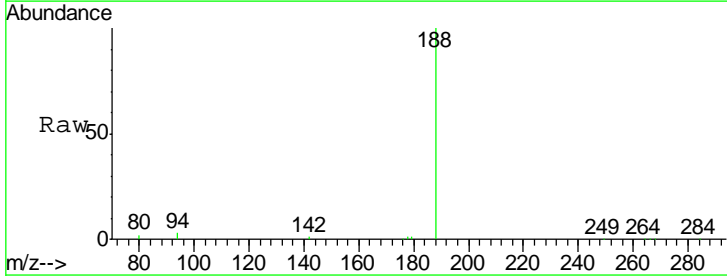
Instrument :  
 BNA\_E  
 ClientSampleId :  
 C19033041

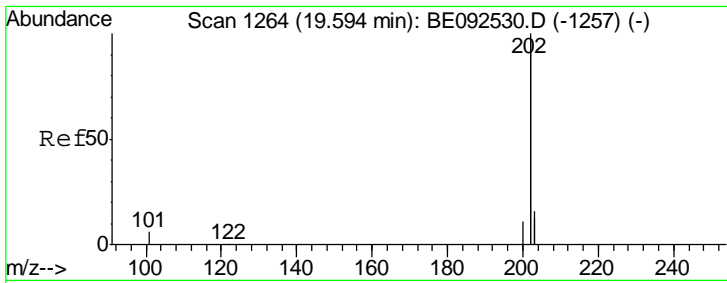
Tgt Ion	Resp	Lower	Upper
166	100		
165	105.3	78.2	117.4
167	19.4	11.0	16.4#



#18  
 Phenanthrene-d10  
 Concen: 5.00 ng  
 RT: 17.56 min Scan# 1153  
 Delta R.T. -0.00 min  
 Lab File: BE092547.D  
 Acq: 16 Nov 2016 23:25

Tgt Ion	Resp	Lower	Upper
188	100		
94	3.1	3.2	4.8#
80	2.5	2.6	3.8#

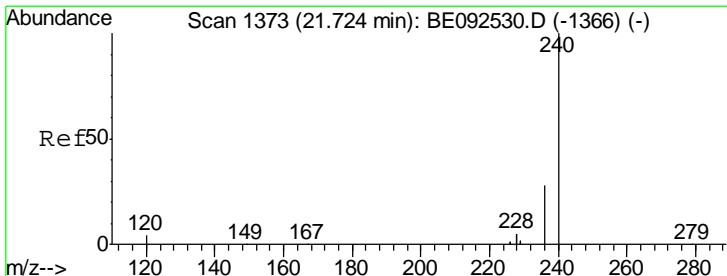
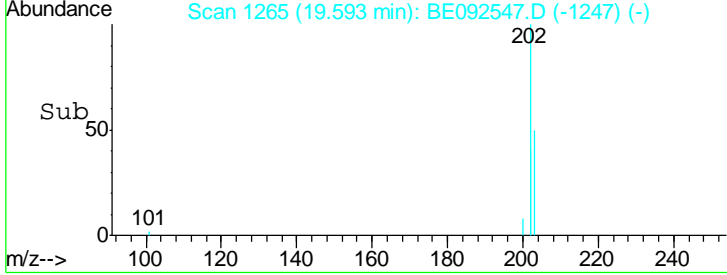
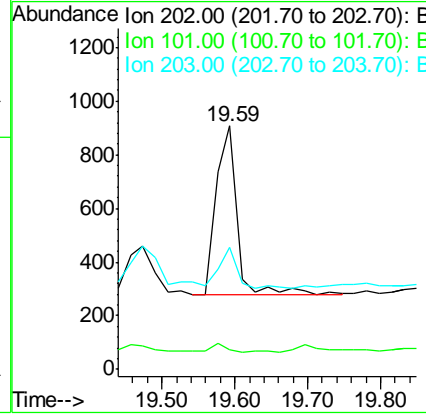
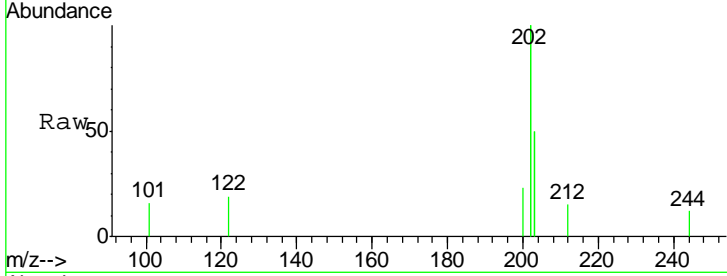




#23  
 Fluoranthene  
 Concen: 0.02 ng  
 RT: 19.59 min Scan# 1265  
 Delta R.T. -0.00 min  
 Lab File: BE092547.D  
 Acq: 16 Nov 2016 23:25

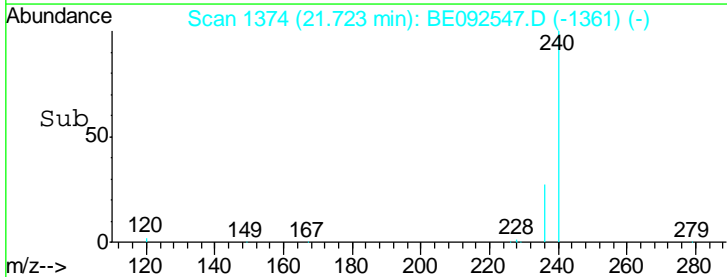
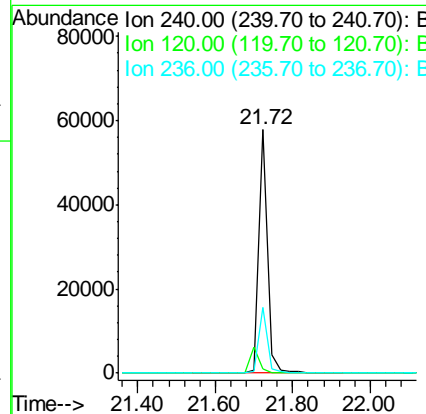
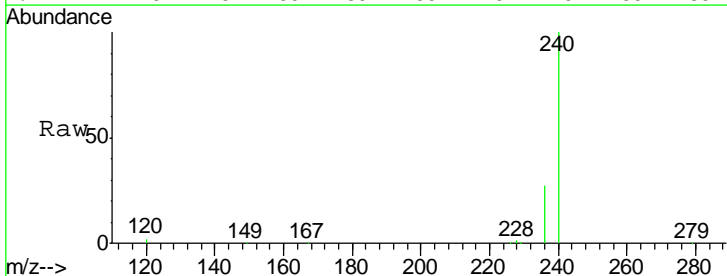
Instrument :  
 BNA\_E  
 ClientSampled :  
 C19033041

Tgt Ion	Resp	Lower	Upper
202	1272		
101	2.8	2.2	3.4
203	20.3	13.7	20.5

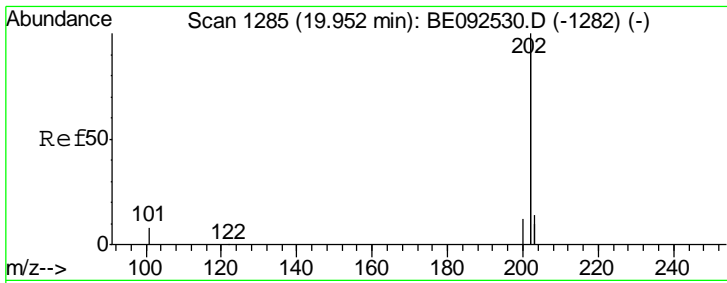


#24  
 Chrysene-d12  
 Concen: 5.00 ng  
 RT: 21.72 min Scan# 1374  
 Delta R.T. -0.00 min  
 Lab File: BE092547.D  
 Acq: 16 Nov 2016 23:25

Tgt Ion	Resp	Lower	Upper
240	88166		
120	2.0	2.6	4.0#
236	27.2	24.6	37.0



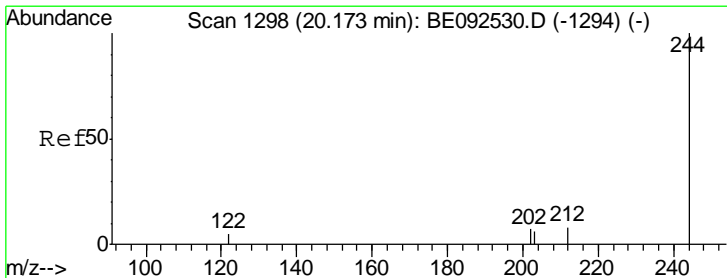
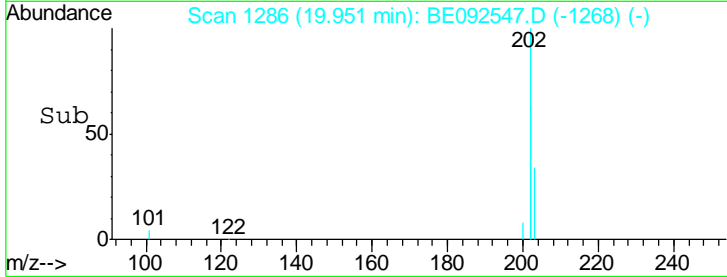
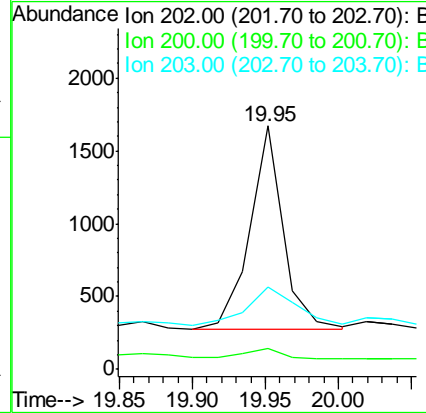
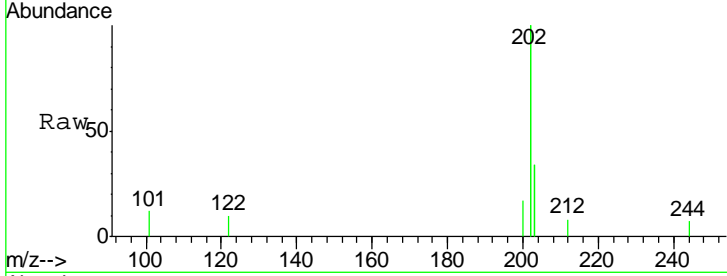




#25  
 Pyrene  
 Concen: 0.03 ng  
 RT: 19.95 min Scan# 1286  
 Delta R.T. -0.00 min  
 Lab File: BE092547.D  
 Acq: 16 Nov 2016 23:25

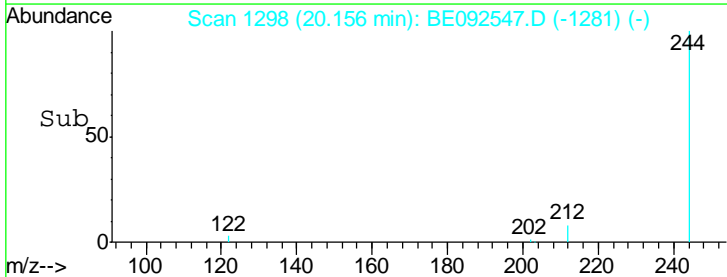
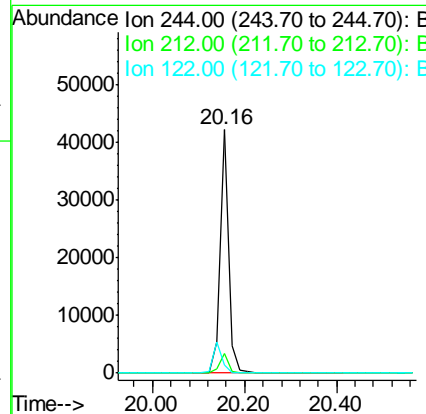
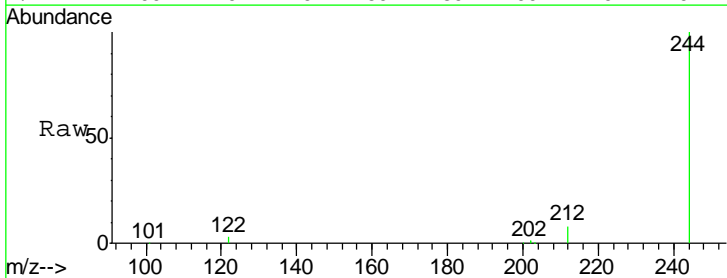
Instrument :  
 BNA\_E  
 ClientSampled :  
 C19033041

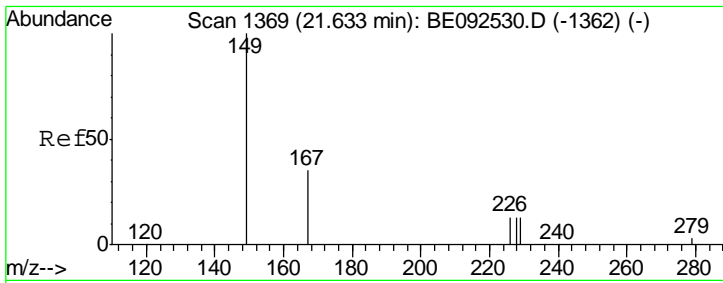
Tgt Ion	Resp	Lower	Upper
202	100		
200	6.1	4.2	6.4
203	27.1	13.9	20.9#



#26  
 Terphenyl-d14  
 Concen: 5.41 ng  
 RT: 20.16 min Scan# 1298  
 Delta R.T. -0.02 min  
 Lab File: BE092547.D  
 Acq: 16 Nov 2016 23:25

Tgt Ion	Resp	Lower	Upper
244	100		
212	7.9	6.7	10.1
122	3.4	3.6	5.4#

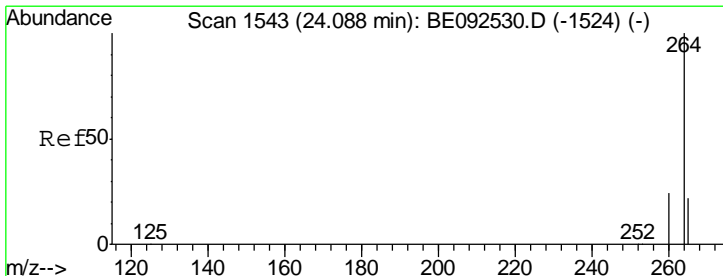
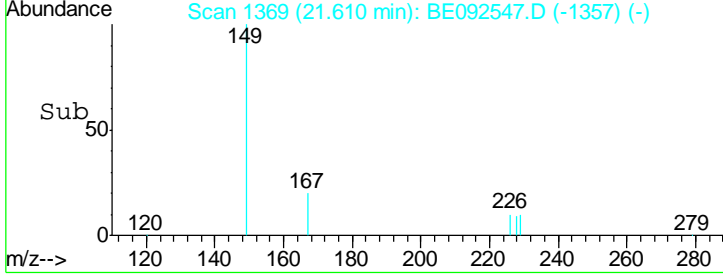
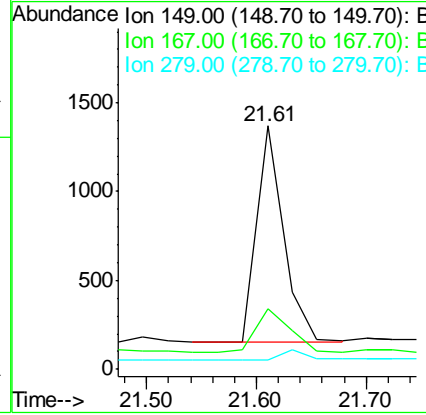
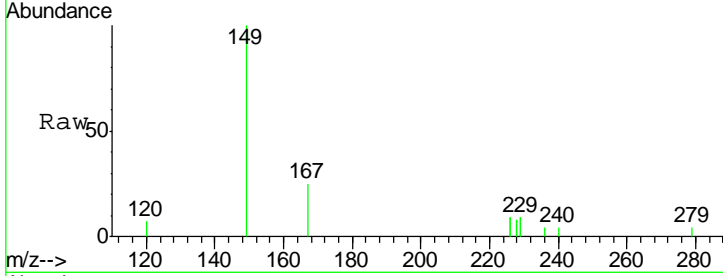




#29  
 Bis(2-ethylhexyl)phthalate  
 Concen: 0.47 ng  
 RT: 21.61 min Scan# 1369  
 Delta R.T. -0.02 min  
 Lab File: BE092547.D  
 Acq: 16 Nov 2016 23:25

**Instrument :**  
 BNA\_E  
**ClientSampled :**  
 C19033041

Tgt Ion	Resp	Lower	Upper
149	2062		
167	26.3	16.0	24.0#
279	0.0	16.0	24.0#



#31  
 Perylene-d12  
 Concen: 5.00 ng  
 RT: 24.08 min Scan# 1543  
 Delta R.T. -0.01 min  
 Lab File: BE092547.D  
 Acq: 16 Nov 2016 23:25

Tgt Ion	Resp	Lower	Upper
264	75990		
260	25.0	20.1	30.1
265	22.1	17.9	26.9

