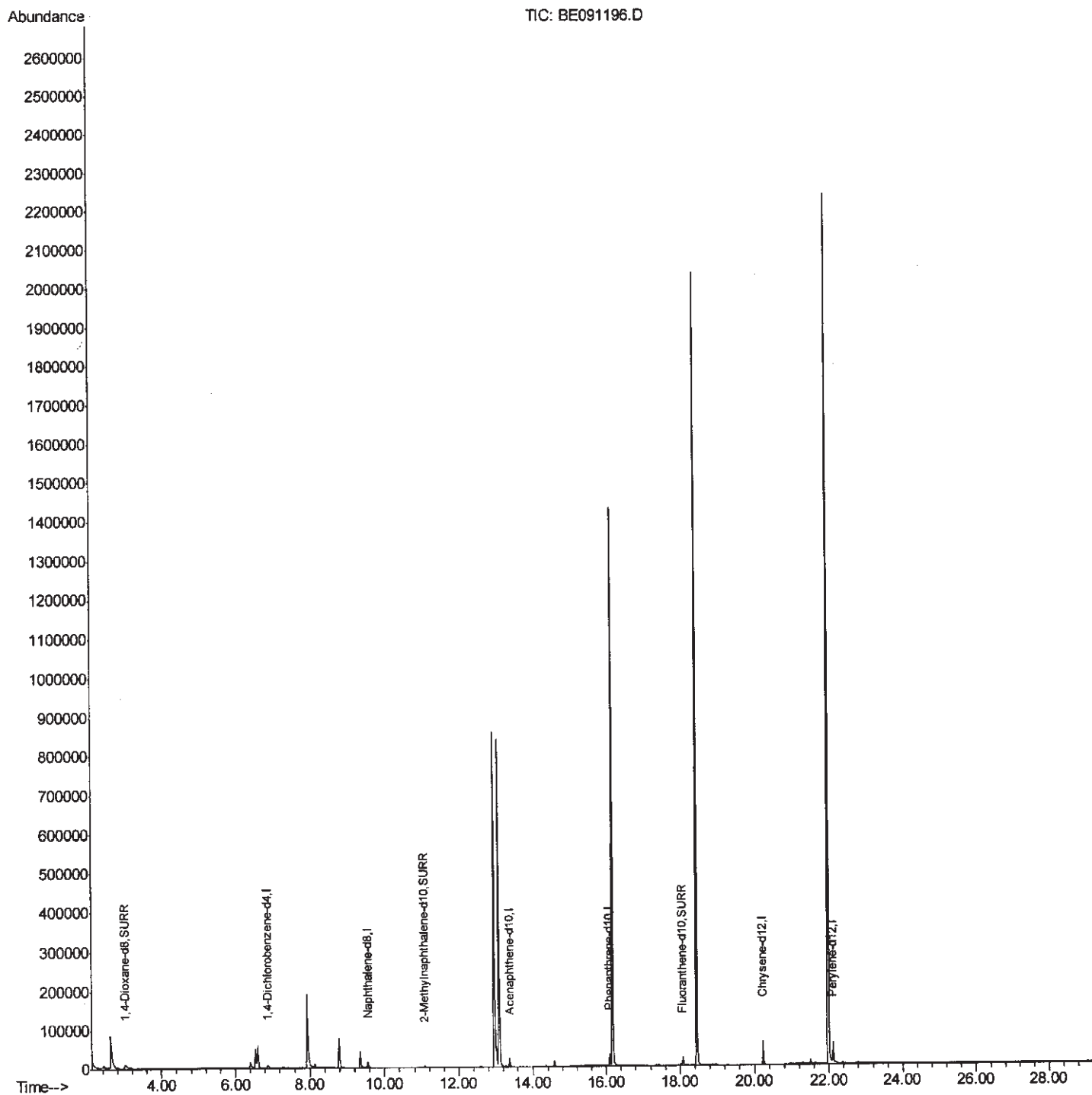


Data Path : Z:\HPCHEM1\BNA_E\Data\BE111715\
 Data File : BE091196.D
 Acq On : 17 Nov 2015 10:02
 Operator : UM/NP
 Sample : G4309-12
 Misc :
 ALS Vial : 18 Sample Multiplier: 1

Instrument :
 BNA_E
 ClientSampled :
 D9KQ3

Quant Time: Nov 19 11:41:02 2015
 Quant Method : Z:\HPCHEM1\BNA_E\METHODS\SOM02.2-EPA-SIM-BE102715.M
 Quant Title : ASP BNA STANDARDS FOR 5 POINT CALIBRATION
 QLast Update : Thu Nov 19 04:25:56 2015
 Response via : Initial Calibration

Manual Integrations
 APPROVED
 Mmdadoda
 11/19/2015 6:40:44 PM

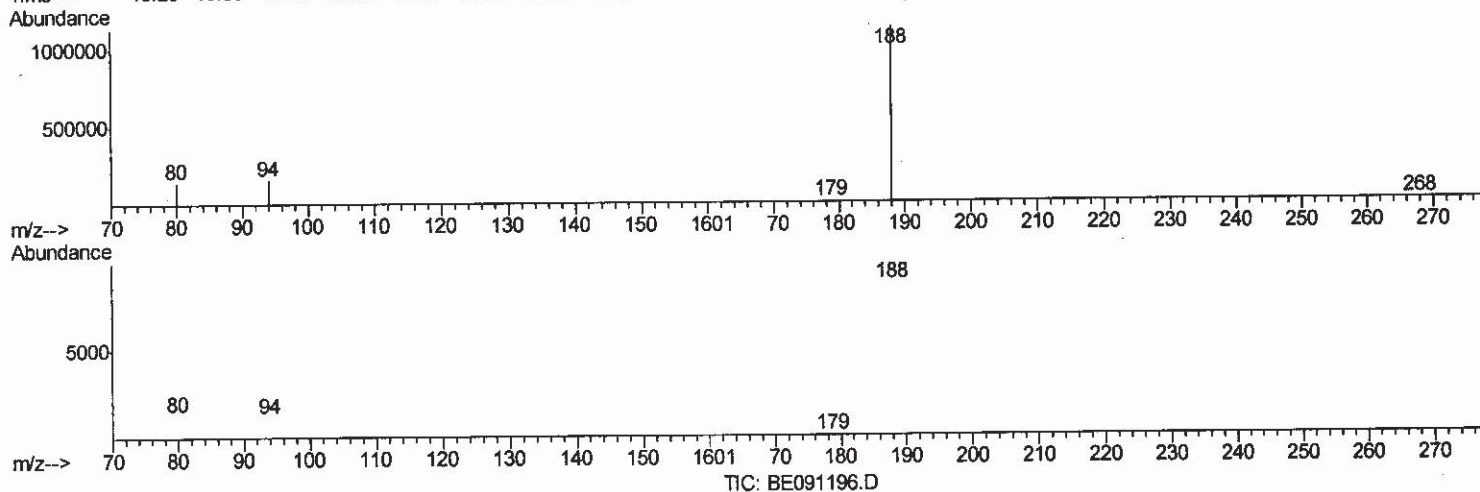
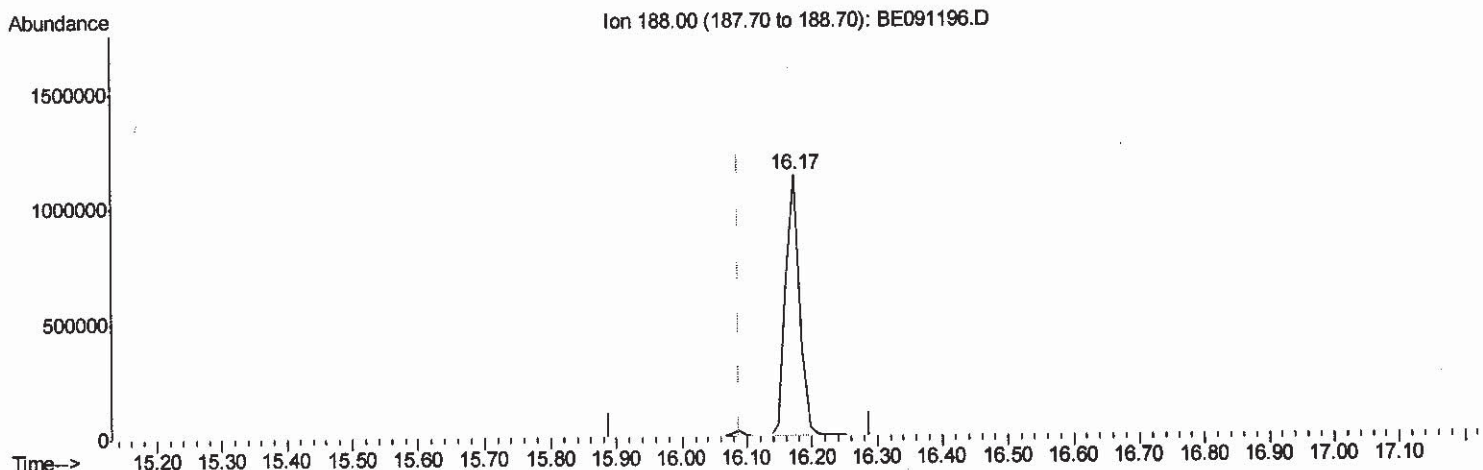


Data Path : Z:\HPCHEM1\BNA_E\Data\BE111715\
 Data File : BE091196.D
 Acq On : 17 Nov 2015 10:02
 Operator : UM/NP
 Sample : G4309-12
 Misc :
 ALS Vial : 18 Sample Multiplier: 1

Instrument :
 BNA_E
 ClientSampleId :
 D9KQ3

Manual Integrations
APPROVED
 Mmdadoda
 11/19/2015 6:40:44 PM

Quant Time: Nov 19 11:39:28 2015
 Quant Method : Z:\HPCHEM1\BNA_E\METHODS\SOM02.2-EPA-SIM-BE102715.M
 Quant Title : ASP BNA STANDARDS FOR 5 POINT CALIBRATION
 QLast Update : Thu Nov 19 04:25:56 2015
 Response via : Initial Calibration



(12) Phenanthrene-d10 (I)

16.173min (+0.084) 0.40ng/ul

response 1675333

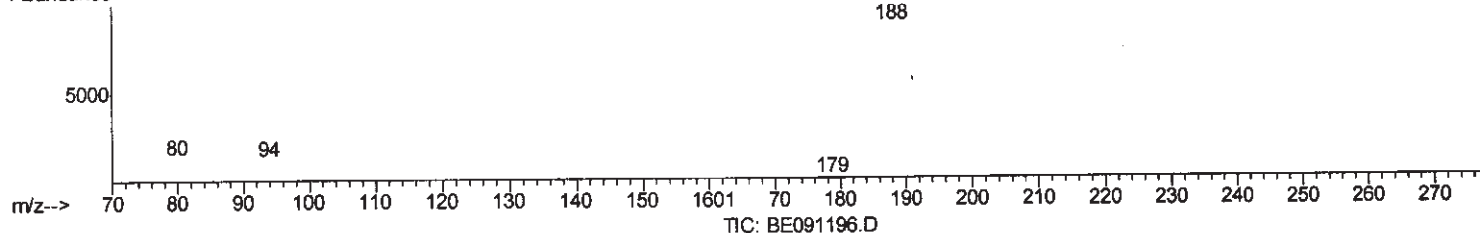
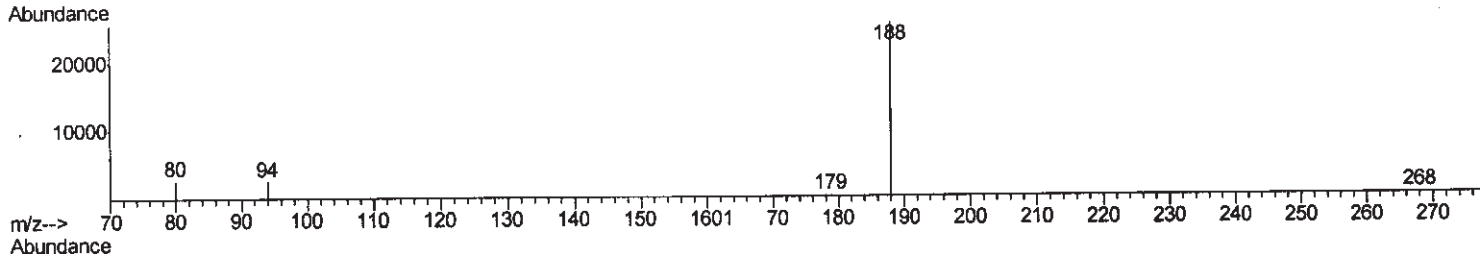
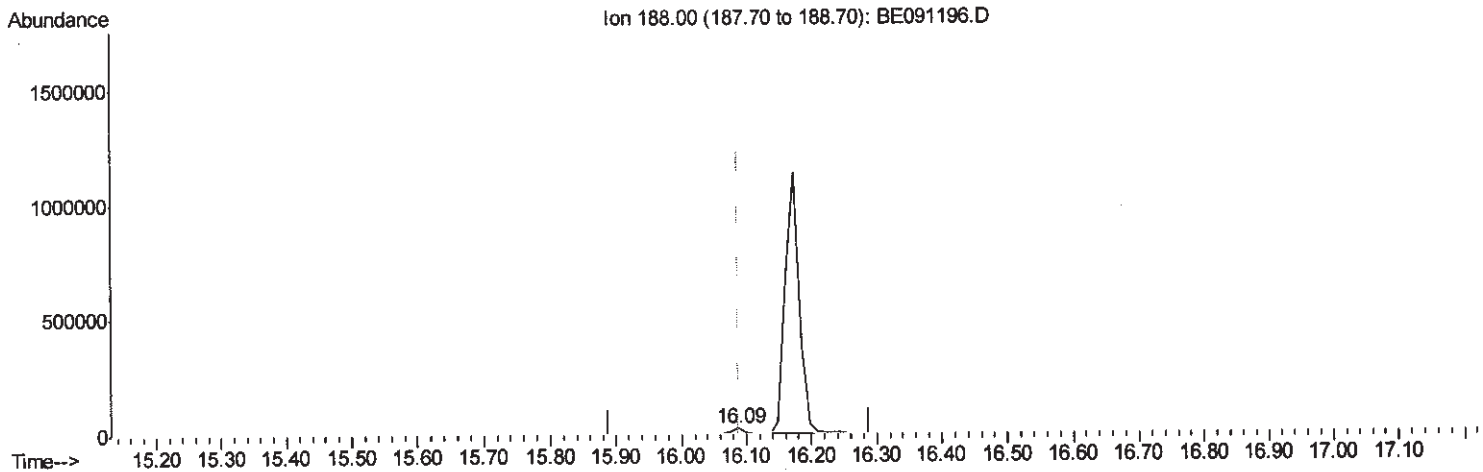
Ion	Exp%	Act%
188.00	100	100
94.00	9.00	13.48#
80.00	8.90	12.15#
0.00	0.00	0.00

Data Path : Z:\HPCHEM1\BNA_E\Data\BE111715\
 Data File : BE091196.D
 Acq On : 17 Nov 2015 10:02
 Operator : UM/NP
 Sample : G4309-12
 Misc :
 ALS Vial : 18 Sample Multiplier: 1

Instrument :
 BNA_E
 ClientSampleId :
 D9KQ3

Manual Integrations
 APPROVED
 Mmdadoda
 11/19/2015 6:40:44 PM

Quant Time: Nov 19 11:39:28 2015
 Quant Method : Z:\HPCHEM1\BNA_E\METHODS\SOM02.2-EPA-SIM-BE102715.M
 Quant Title : ASP BNA STANDARDS FOR 5 POINT CALIBRATION
 QLast Update : Thu Nov 19 04:25:56 2015
 Response via : Initial Calibration



(12) Phenanthrene-d10 (I)

16.088min (-0.001) 0.40ng/ul m

U.M
11/20/15

response 33199

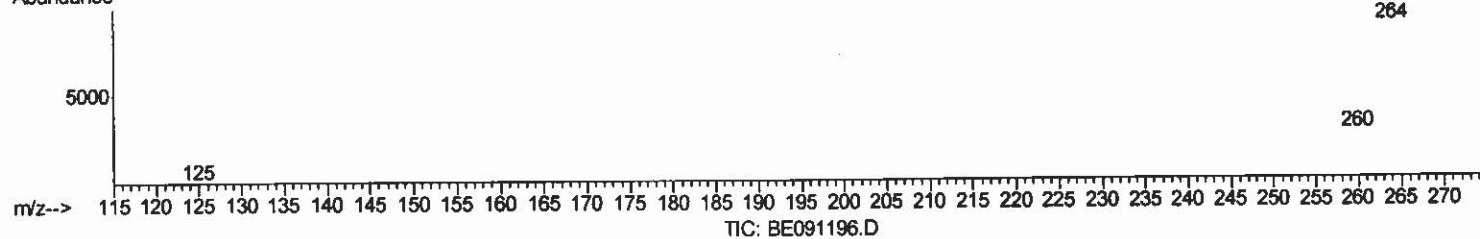
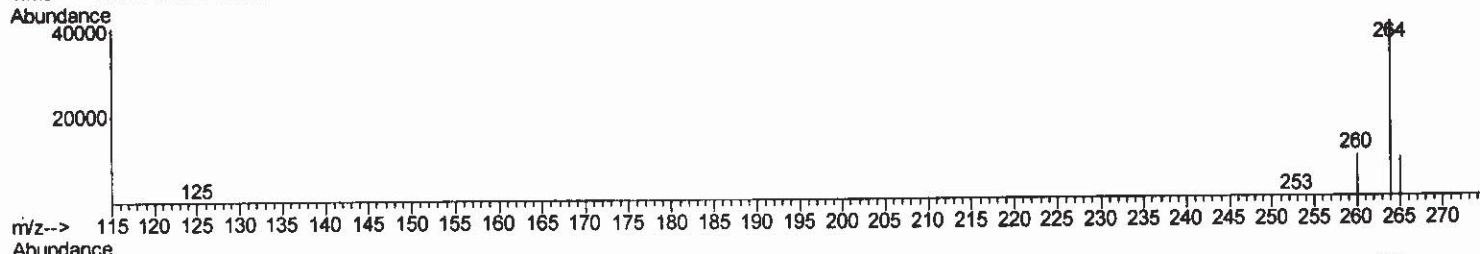
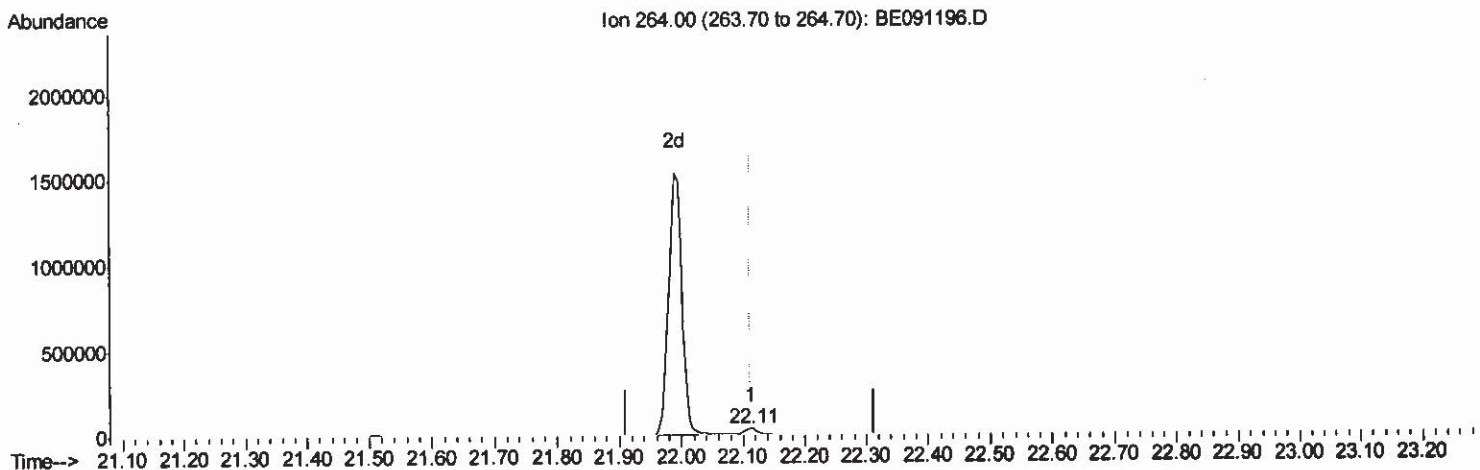
Ion	Exp%	Act%
188.00	100	100
94.00	9.00	10.38
80.00	8.90	10.77#
0.00	0.00	0.00

Data Path : Z:\HPCHEM1\BNA_E\Data\BE111715\
 Data File : BE091196.D
 Acq On : 17 Nov 2015 10:02
 Operator : UM/NP
 Sample : G4309-12
 Misc :
 ALS Vial : 18 Sample Multiplier: 1

Instrument :
 BNA_E
 ClientSampleId :
 D9KQ3

Quant Time: Nov 19 11:40:04 2015
 Quant Method : Z:\HPCHEM1\BNA_E\METHODS\SOM02.2-EPA-SIM-BE102715.M
 Quant Title : ASP BNA STANDARDS FOR 5 POINT CALIBRATION
 QLast Update : Thu Nov 19 04:25:56 2015
 Response via : Initial Calibration

Manual Integrations
 APPROVED
 Mmdadoda
 11/19/2015 6:40:44 PM



(22) Perylene-d12 (I)

22.113min (+0.001) 0.40ng/ul

response 73016

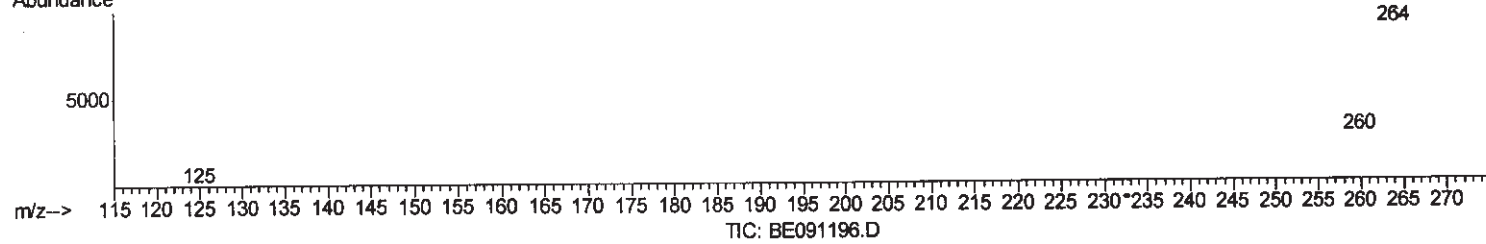
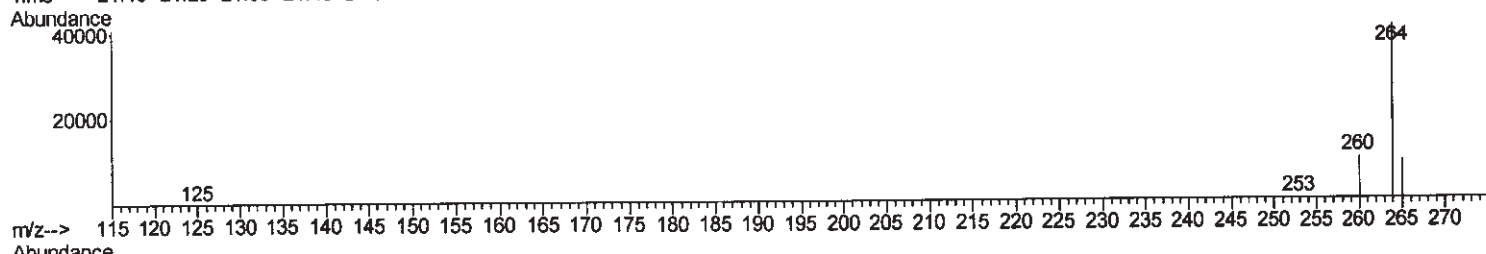
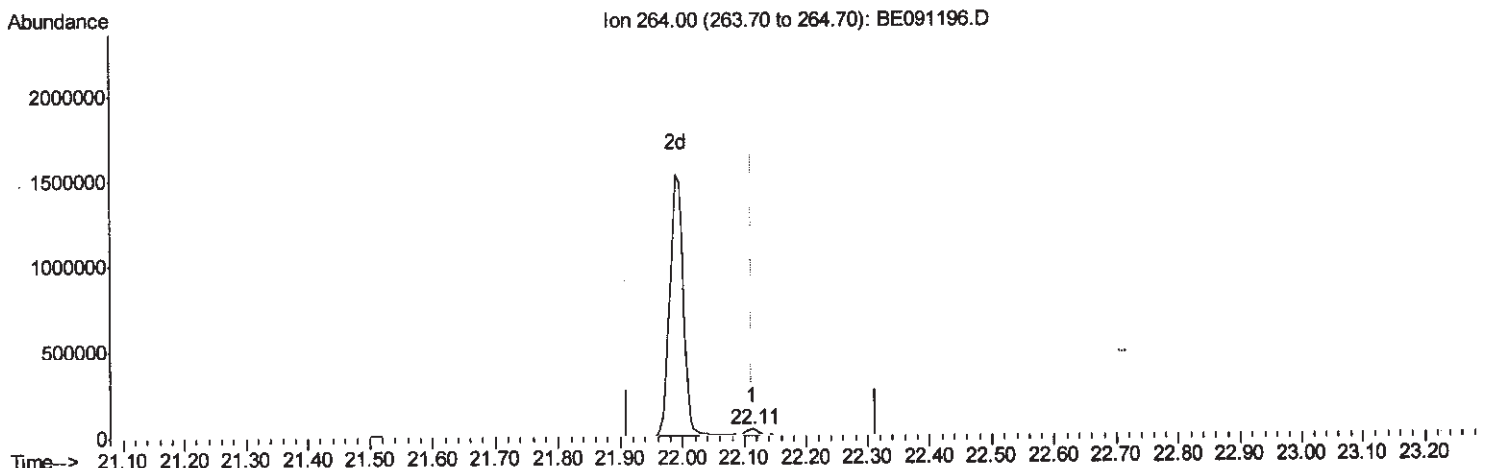
Ion	Exp%	Act%
264.00	100	100
260.00	28.90	24.20
265.00	34.70	22.80#
0.00	0.00	0.00

Data Path : Z:\HPCHEM1\BNA_E\Data\BE111715\
 Data File : BE091196.D
 Acq On : 17 Nov 2015 10:02
 Operator : UM/NP
 Sample : G4309-12
 Misc :
 ALS Vial : 18 Sample Multiplier: 1

Instrument :
 BNA_E
 ClientSampleId :
 D9KQ3

Manual Integrations
 APPROVED
 Mmdadoda
 11/19/2015 6:40:44 PM

Quant Time: Nov 19 11:40:04 2015
 Quant Method : Z:\HPCHEM1\BNA_E\METHODS\SOM02.2-EPA-SIM-BE102715.M
 Quant Title : ASP BNA STANDARDS FOR 5 POINT CALIBRATION
 QLast Update : Thu Nov 19 04:25:56 2015
 Response via : Initial Calibration



(22) Perylene-d12 (I)

22.113min (+0.001) 0.40ng/ul m *U.M*
11/20/15

response	Ion	Exp%	Act%
49835	264.00	100	100
	260.00	28.90	24.20
	265.00	34.70	22.80#
	0.00	0.00	0.00

Data Path : Z:\HPCHEM1\BNA_E\Data\BE111715\
 Data File : BE091196.D
 Acq On : 17 Nov 2015 10:02
 Operator : UM/NP
 Sample : G4309-12
 Misc :
 ALS Vial : 18 Sample Multiplier: 1

Instrument :
 BNA_E
ClientSampleId :
 D9KQ3

Manual Integrations
APPROVED
 Mmdadoda
 11/19/2015 6:40:44 PM

Quant Time: Nov 19 11:41:02 2015
 Quant Method : Z:\HPCHEM1\BNA_E\METHODS\SOM02.2-EPA-SIM-BE102715.M
 Quant Title : ASP BNA STANDARDS FOR 5 POINT CALIBRATION
 QLast Update : Thu Nov 19 04:25:56 2015
 Response via : Initial Calibration

Internal Standards	R.T.	QIon	Response	Conc	Units	Dev(Min)
1) 1,4-Dichlorobenzene-d4	6.88	152	4099	0.40	ng/ul	-0.02
4) Naphthalene-d8	9.56	136	20834	0.40	ng/ul	0.00
8) Acenaphthene-d10	13.37	164	12224	0.40	ng/ul	0.00
12) Phenanthrene-d10	16.09	188	33199m	0.40	ng/ul	0.00
18) Chrysene-d12	20.23	240	60145	0.40	ng/ul	0.00
22) Perylene-d12	22.11	264	49835m	0.40	ng/ul	0.00
System Monitoring Compounds						
2) 1,4-Dioxane-d8	3.00	96	18492	6.27	ng/uL	0.00
6) 2-Methylnaphthalene-d10	11.08	152	6463	0.23	ng/ul	0.01
16) Fluoranthene-d10	18.08	212	23550	0.25	ng/ul	0.00

U.M
 11/20/15

Target Compounds Qvalue

(#) = qualifier out of range (m) = manual integration (+) = signals summed