

Data Path : Z:\SVOASRV\HPCHEM1\BNA E\DATA\BE112118\
 Data File : BE098256.D
 Acq On : 21 Nov 2018 10:50
 Operator : SJ/JU
 Sample : PB114965BL
 Misc :
 ALS Vial : 4 Sample Multiplier: 1

Instrument :
 BNA_E
 ClientSampleId :
 PB114965BL

Quant Time: Nov 21 11:27:52 2018
 Quant Method : Z:\SVOASRV\HPCHEM1\BNA E\METHODS\8270-SIM-BE111618.M
 Quant Title : ASP BNA STANDARDS FOR 5 POINT CALIBRATION
 QLast Update : Fri Nov 16 19:05:33 2018
 Response via : Initial Calibration

Internal Standards	R.T.	QIon	Response	Conc	Units	Dev(Min)
1) 1,4-Dichlorobenzene-d4	7.86	152	1211	0.40	ng	0.00
7) Naphthalene-d8	10.67	136	4788	0.40	ng	0.00
13) Acenaphthene-d10	14.54	164	3013	0.40	ng	0.01
19) Phenanthrene-d10	17.28	188	8583	0.40	ng	0.00
27) Chrysene-d12	21.46	240	9627	0.40	ng	0.00
34) Perylene-d12	24.01	264	8951	0.40	ng	0.00
System Monitoring Compounds						
4) 2-Fluorophenol	5.46	112	1430	0.44	ng	0.00
5) Phenol-d6	7.05	99	1831	0.36	ng	0.01
8) Nitrobenzene-d5	9.03	82	1806	0.40	ng	0.01
11) 2-Methylnaphthalene-d10	12.27	152	3381	0.40	ng	0.00
14) 2,4,6-Tribromophenol	16.03	330	395	0.41	ng	0.00
15) 2-Fluorobiphenyl	13.16	172	4956	0.38	ng	0.01
25) Fluoranthene-d10	19.31	212	49280	0.47	ng	0.00
29) Terphenyl-d14	19.91	244	8853	0.40	ng	0.00

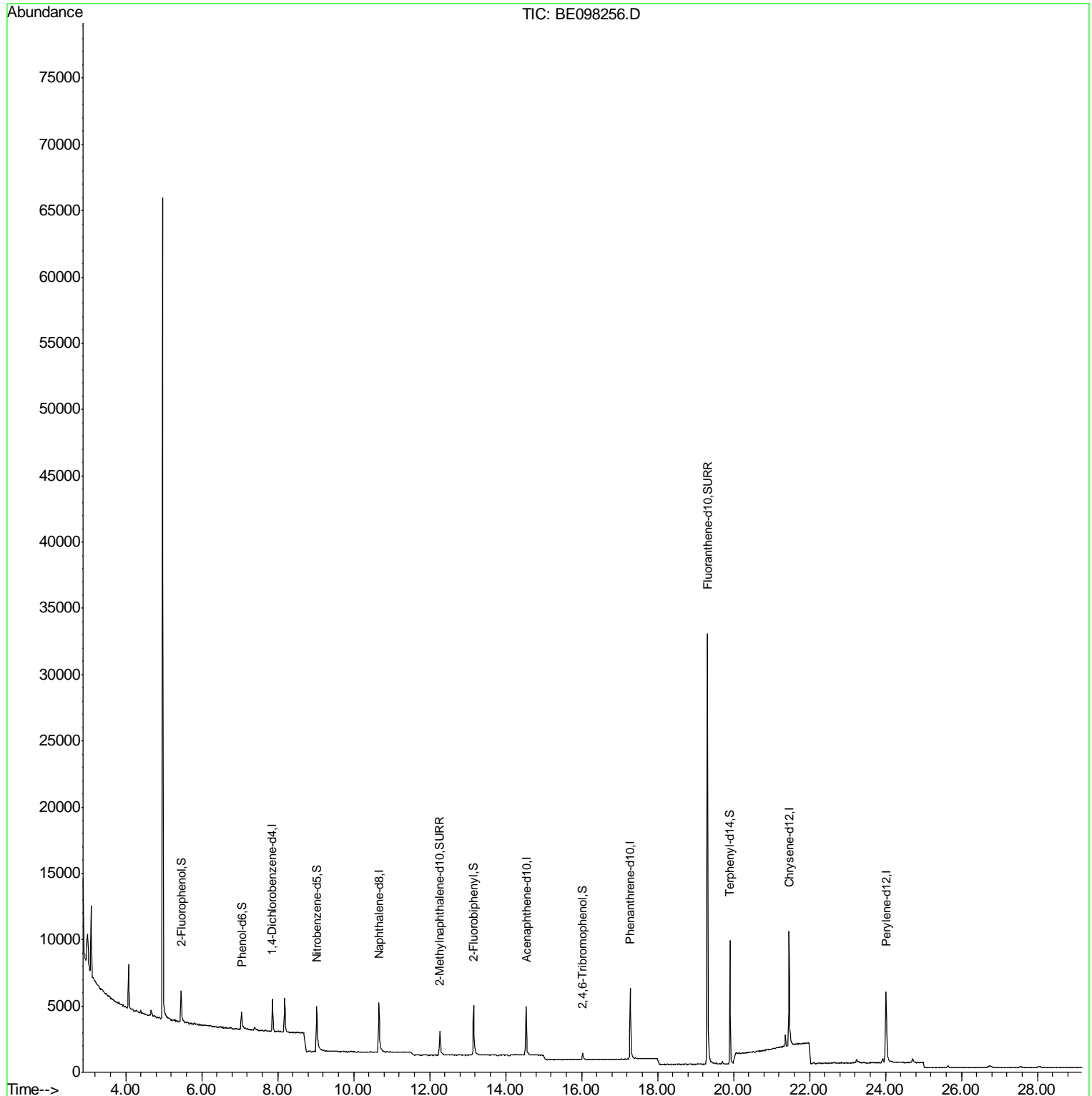
Target Compounds Qvalue

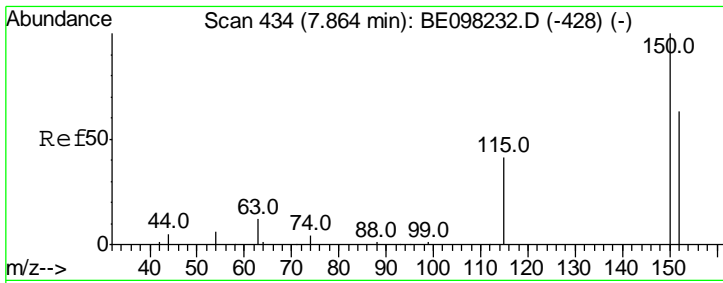
(#) = qualifier out of range (m) = manual integration (+) = signals summed

Data Path : Z:\SVOASRV\HPCHEM1\BNA E\DATA\BE112118\
Data File : BE098256.D
Acq On : 21 Nov 2018 10:50
Operator : SJ/JU
Sample : PB114965BL
Misc :
ALS Vial : 4 Sample Multiplier: 1

Instrument :
BNA_E
ClientSampleId :
PB114965BL

Quant Time: Nov 21 11:27:52 2018
Quant Method : Z:\SVOASRV\HPCHEM1\BNA E\METHODS\8270-SIM-BE111618.M
Quant Title : ASP BNA STANDARDS FOR 5 POINT CALIBRATION
QLast Update : Fri Nov 16 19:05:33 2018
Response via : Initial Calibration

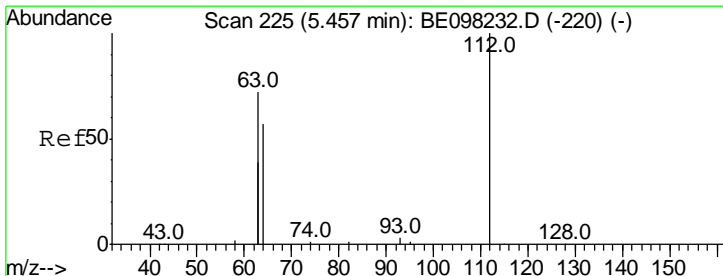
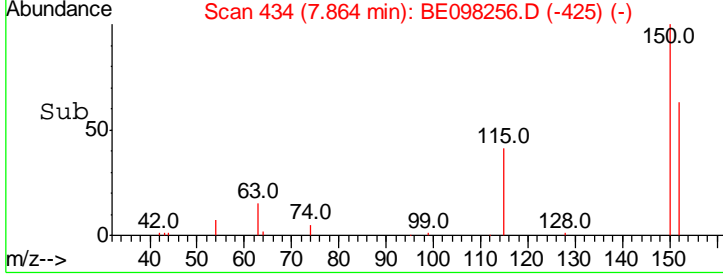
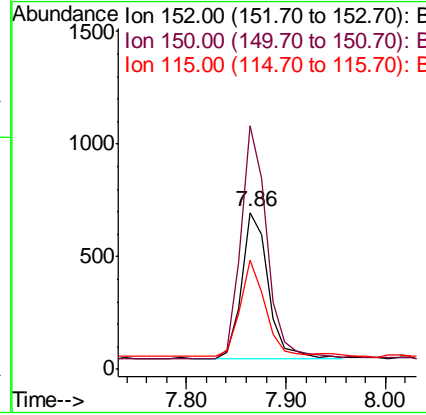
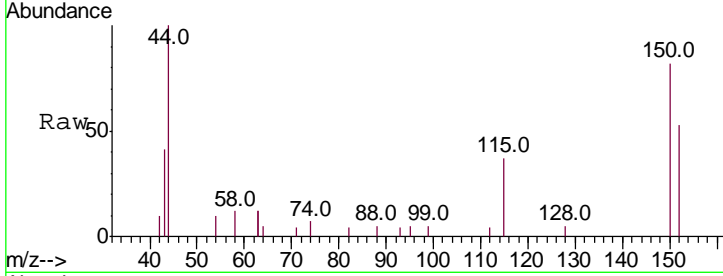




#1
 1,4-Dichlorobenzene-d4
 Concen: 0.400 ng
 RT: 7.86 min Scan# 434
 Delta R.T. -0.00 min
 Lab File: BE098256.D
 Acq: 21 Nov 2018 10:50

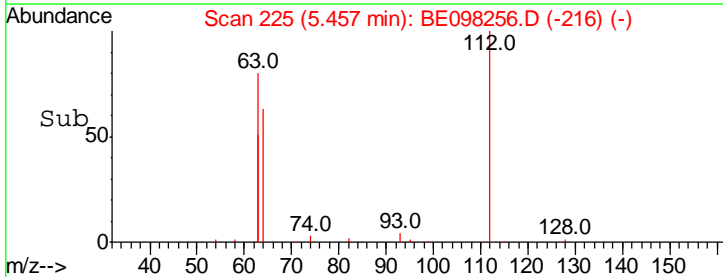
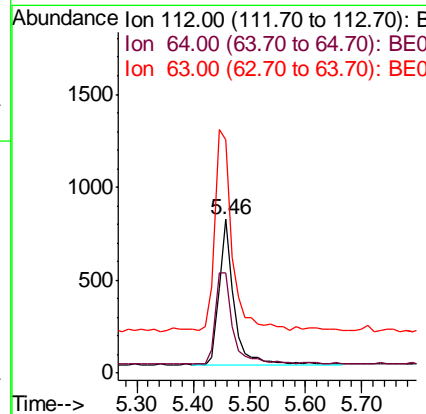
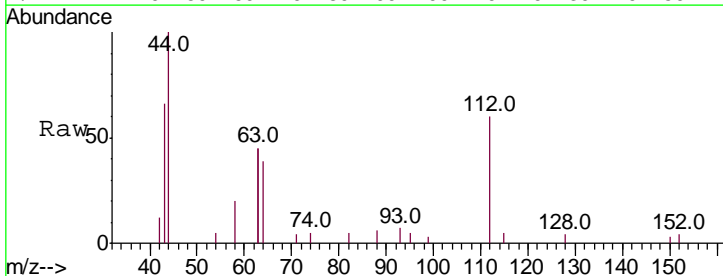
Instrument :
 BNA_E
 ClientSampleId :
 PB114965BL

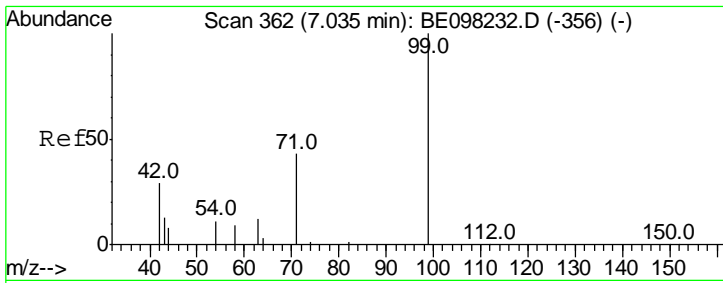
Tgt Ion	Resp	Lower	Upper
152	1211		
152	100		
150	154.9	127.5	191.3
115	69.5	60.3	90.5



#4
 2-Fluorophenol
 Concen: 0.440 ng
 RT: 5.46 min Scan# 225
 Delta R.T. -0.00 min
 Lab File: BE098256.D
 Acq: 21 Nov 2018 10:50

Tgt Ion	Resp	Lower	Upper
112	1430		
112	100		
64	71.8	61.7	92.5
63	156.4	136.2	204.2

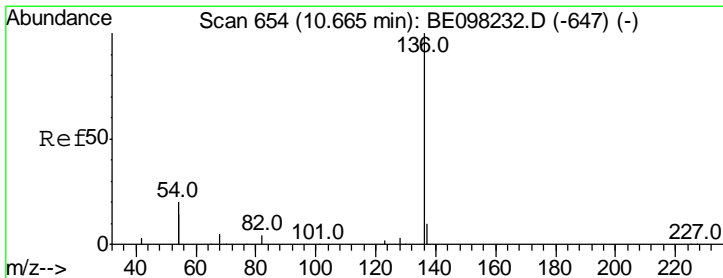
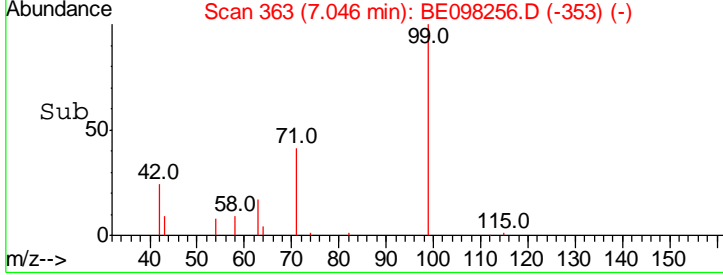
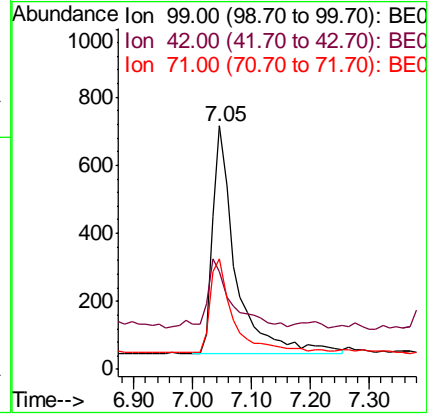
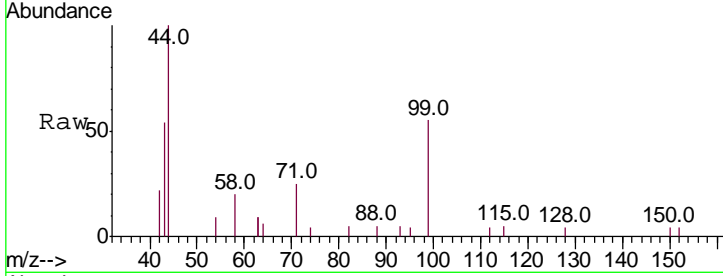




#5
 Phenol-d6
 Concen: 0.359 ng
 RT: 7.05 min Scan# 363
 Delta R.T. 0.01 min
 Lab File: BE098256.D
 Acq: 21 Nov 2018 10:50

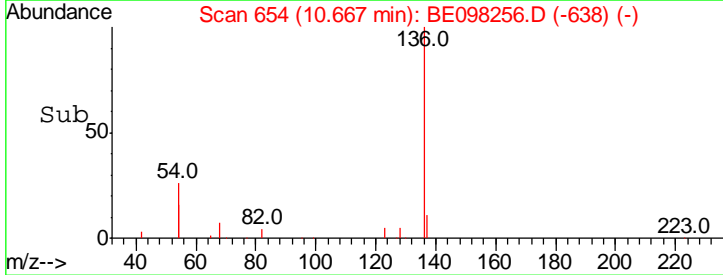
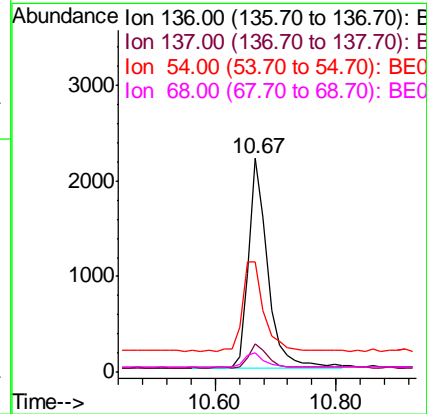
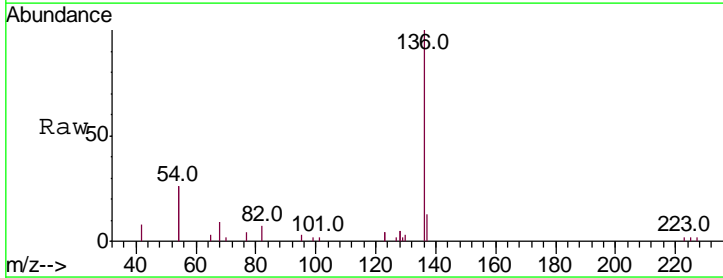
Instrument :
 BNA_E
 ClientSampled :
 PB114965BL

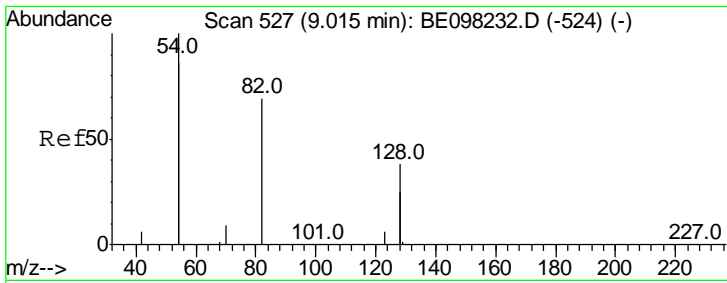
Tgt Ion	Resp	Lower	Upper
99	1831		
99	100		
42	32.6	27.1	40.7
71	41.3	37.0	55.6



#7
 Naphthalene-d8
 Concen: 0.400 ng
 RT: 10.67 min Scan# 654
 Delta R.T. 0.00 min
 Lab File: BE098256.D
 Acq: 21 Nov 2018 10:50

Tgt Ion	Resp	Lower	Upper
136	4788		
136	100		
137	13.3	9.5	14.3
54	51.6	31.3	46.9#
68	8.8	4.8	7.2#

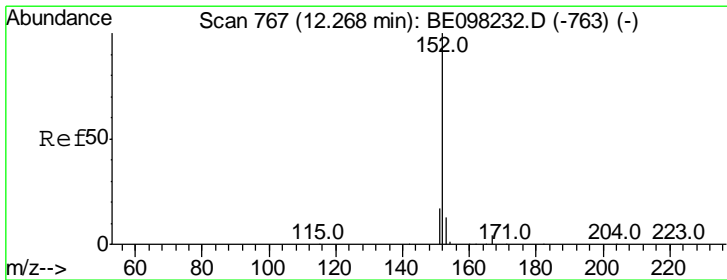
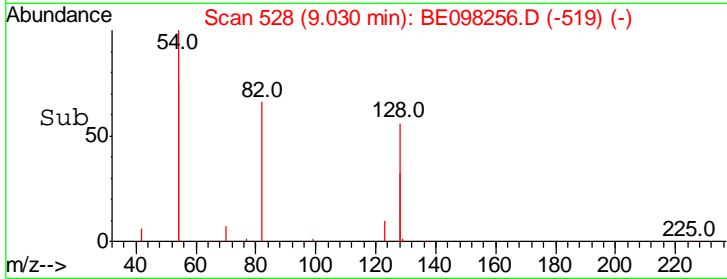
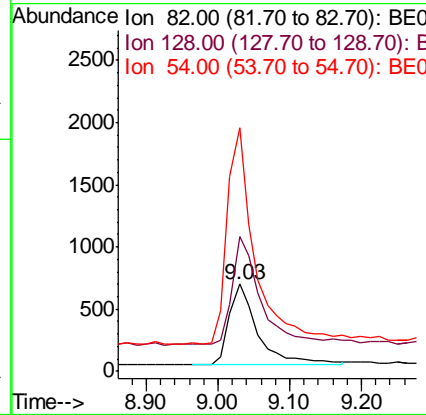
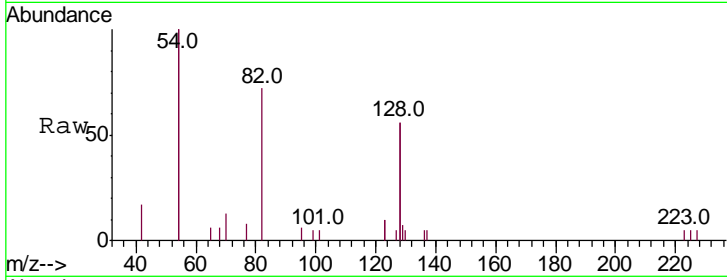




#8
 Nitrobenzene-d5
 Concen: 0.400 ng
 RT: 9.03 min Scan# 528
 Delta R.T. 0.01 min
 Lab File: BE098256.D
 Acq: 21 Nov 2018 10:50

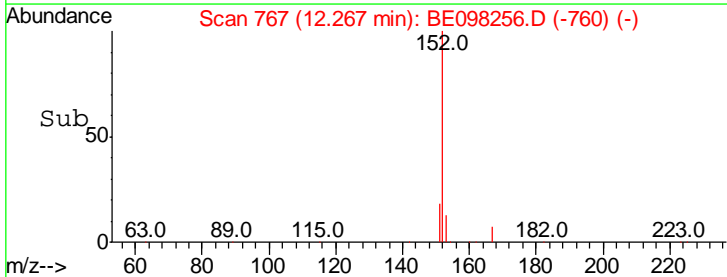
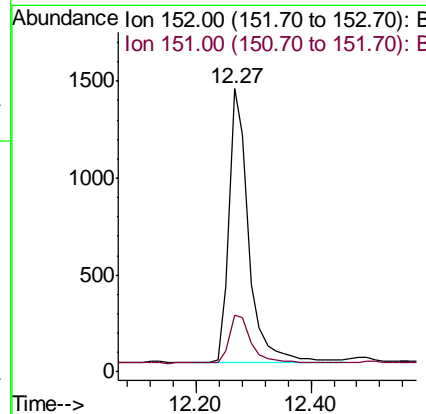
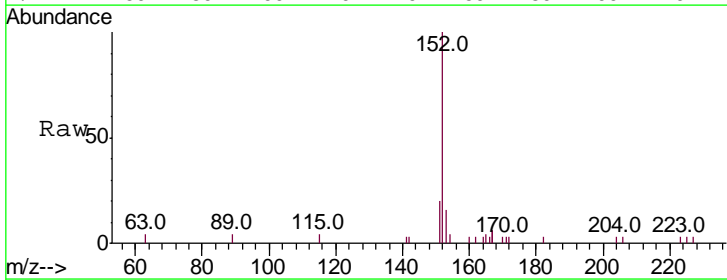
Instrument :
 BNA_E
 ClientSampleId :
 PB114965BL

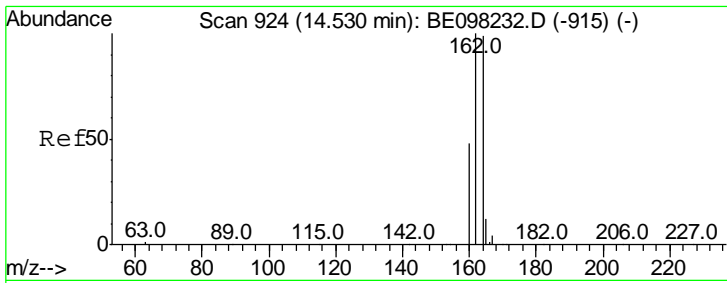
Tgt Ion	Resp	Lower	Upper
82	1806		
82	100		
128	155.2	96.1	144.1#
54	279.3	232.0	348.0



#11
 2-Methylnaphthalene-d10
 Concen: 0.402 ng
 RT: 12.27 min Scan# 767
 Delta R.T. -0.00 min
 Lab File: BE098256.D
 Acq: 21 Nov 2018 10:50

Tgt Ion	Resp	Lower	Upper
152	3381		
152	100		
151	19.1	15.4	23.2

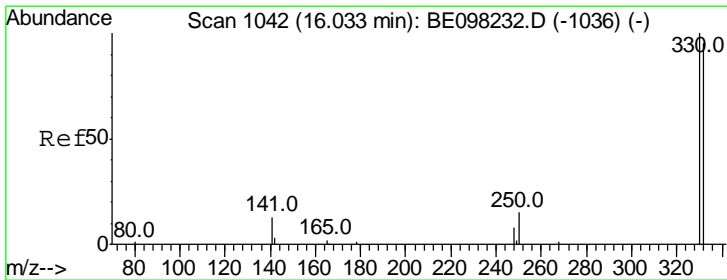
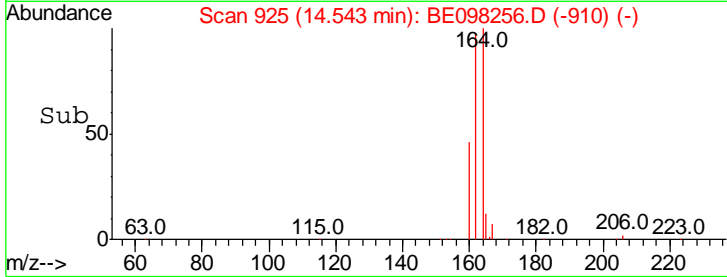
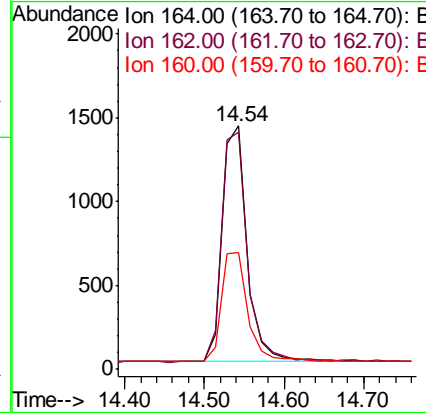
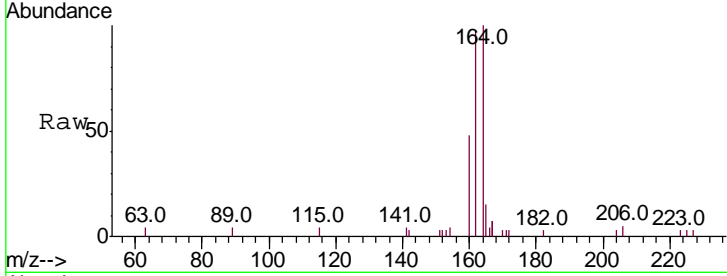




#13
 Acenaphthene-d10
 Concen: 0.400 ng
 RT: 14.54 min Scan# 925
 Delta R.T. 0.01 min
 Lab File: BE098256.D
 Acq: 21 Nov 2018 10:50

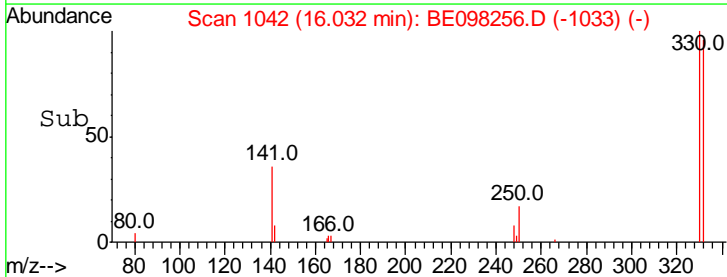
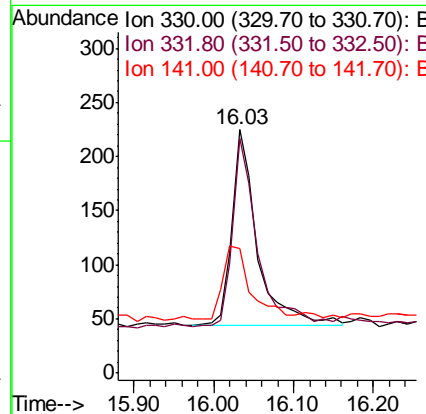
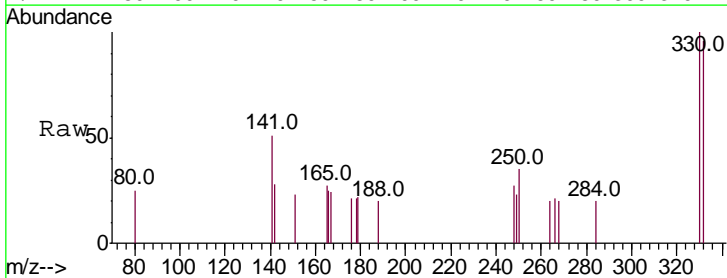
Instrument :
 BNA_E
 ClientSampleId :
 PB114965BL

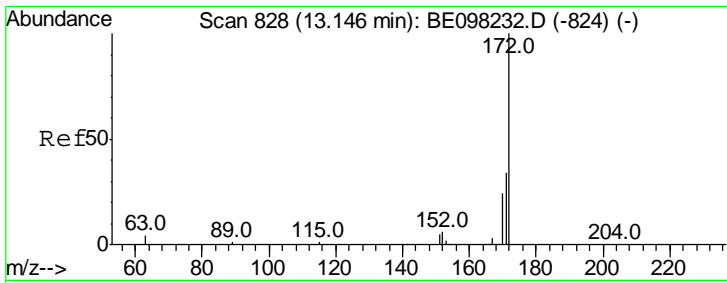
Tgt Ion	Resp	Lower	Upper
164	100		
162	97.2	81.8	122.6
160	47.9	39.4	59.0



#14
 2,4,6-Tribromophenol
 Concen: 0.407 ng
 RT: 16.03 min Scan# 1042
 Delta R.T. 0.00 min
 Lab File: BE098256.D
 Acq: 21 Nov 2018 10:50

Tgt Ion	Resp	Lower	Upper
330	100		
332	97.5	77.7	116.5
141	40.8	33.6	50.4



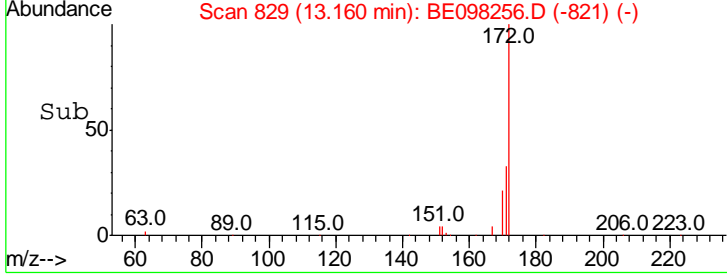
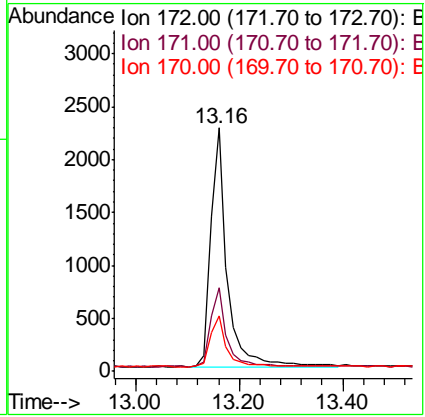
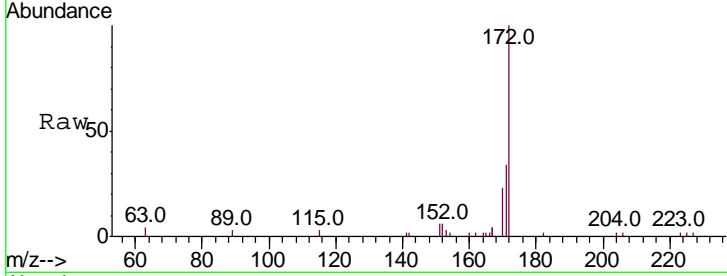


#15
 2-Fluorobiphenyl
 Concen: 0.378 ng
 RT: 13.16 min Scan# 829
 Delta R.T. 0.01 min
 Lab File: BE098256.D
 Acq: 21 Nov 2018 10:50

Instrument :
 BNA_E
ClientSampled :
 PB114965BL

Tgt Ion:172 Resp: 4956

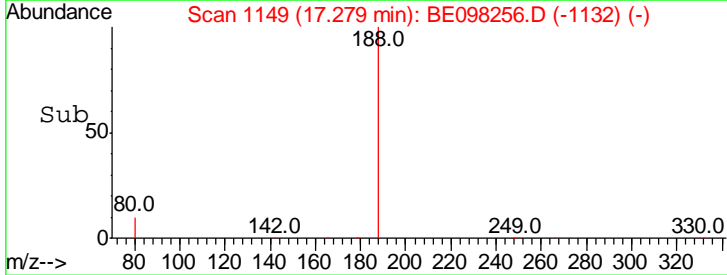
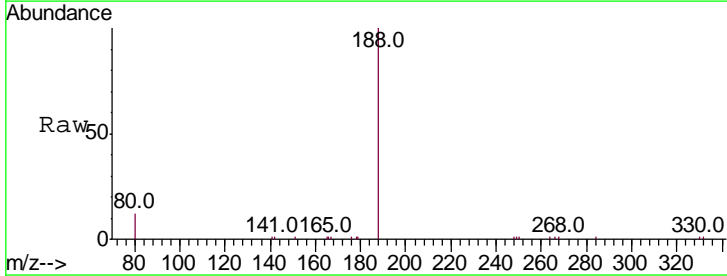
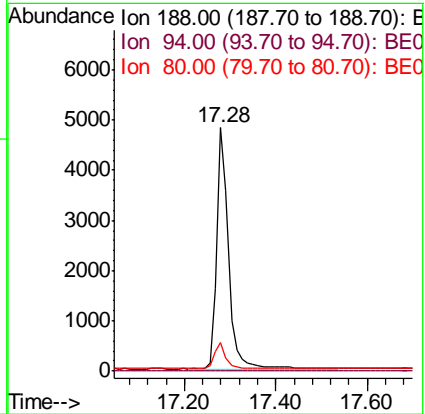
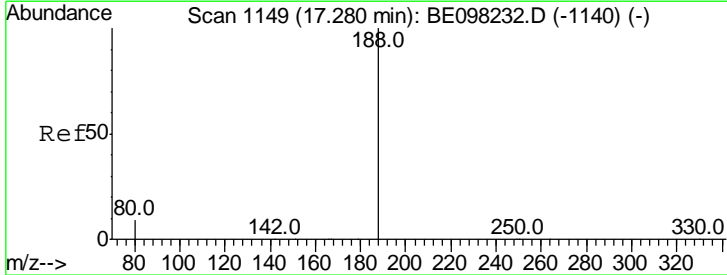
Ion	Ratio	Lower	Upper
172	100		
171	34.1	27.3	40.9
170	22.8	19.4	29.0

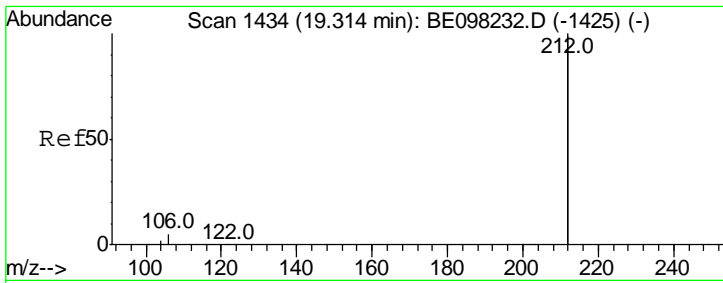


#19
 Phenanthrene-d10
 Concen: 0.400 ng
 RT: 17.28 min Scan# 1149
 Delta R.T. -0.00 min
 Lab File: BE098256.D
 Acq: 21 Nov 2018 10:50

Tgt Ion:188 Resp: 8583

Ion	Ratio	Lower	Upper
188	100		
94	0.0	0.0	0.0
80	11.5	6.7	10.1#

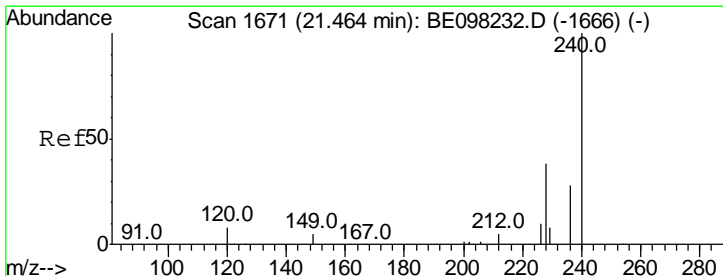
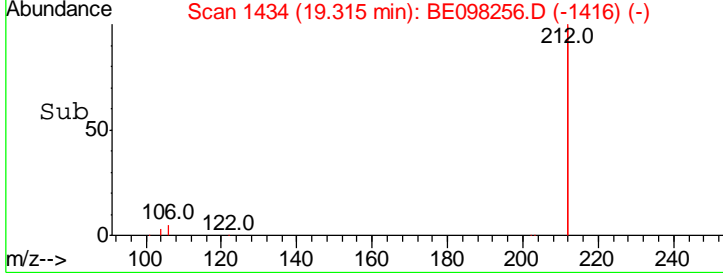
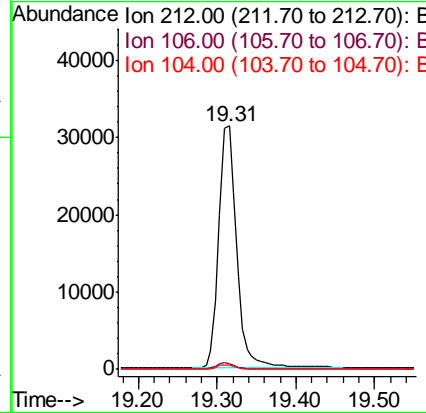
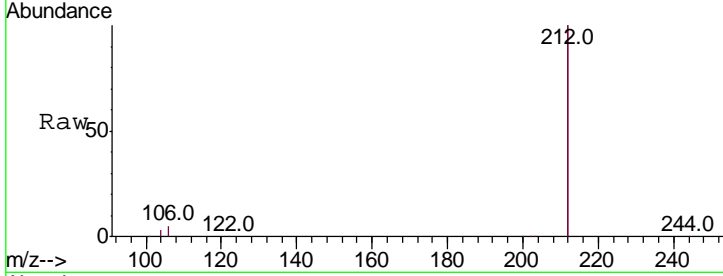




#25
 Fluoranthene-d10
 Concen: 0.472 ng
 RT: 19.31 min Scan# 1434
 Delta R.T. 0.00 min
 Lab File: BE098256.D
 Acq: 21 Nov 2018 10:50

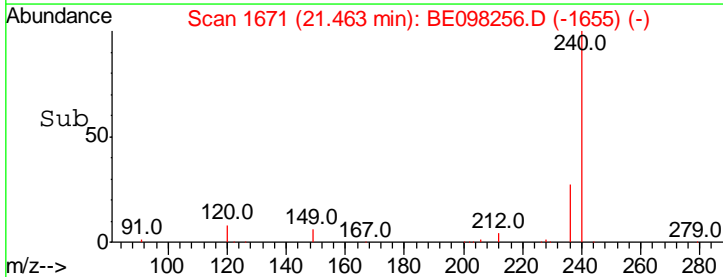
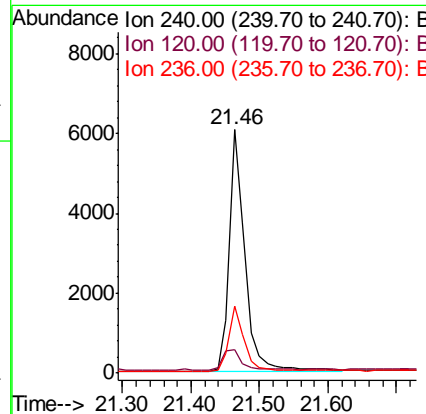
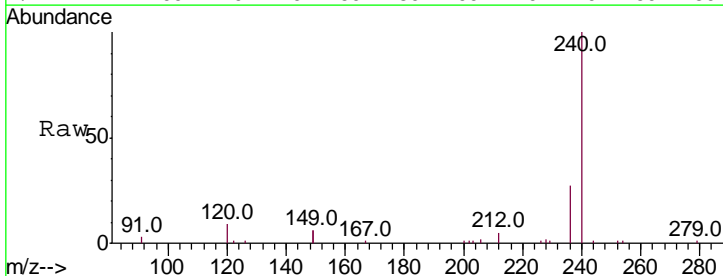
Instrument :
 BNA_E
 ClientSampled :
 PB114965BL

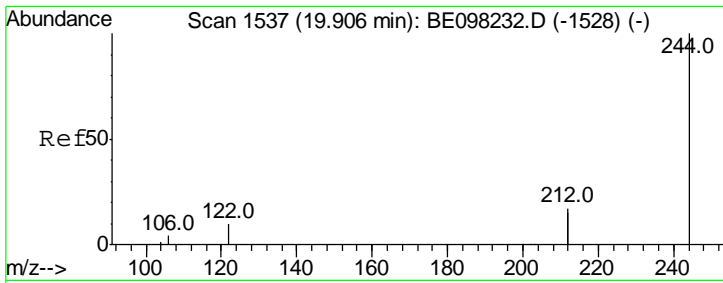
Tgt Ion	Resp	Lower	Upper
212	100		
106	2.7	1.8	2.8
104	1.5	1.1	1.7



#27
 Chrysene-d12
 Concen: 0.400 ng
 RT: 21.46 min Scan# 1671
 Delta R.T. -0.00 min
 Lab File: BE098256.D
 Acq: 21 Nov 2018 10:50

Tgt Ion	Resp	Lower	Upper
240	100		
120	9.5	4.8	7.2#
236	27.3	21.4	32.0

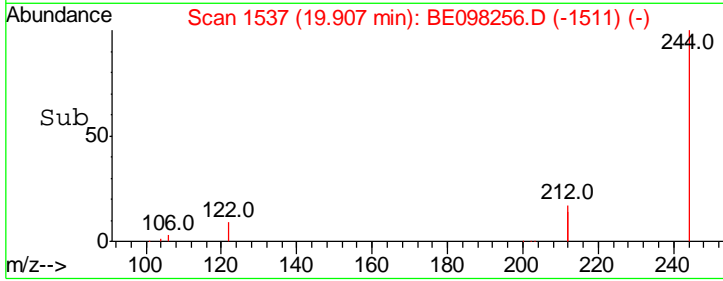
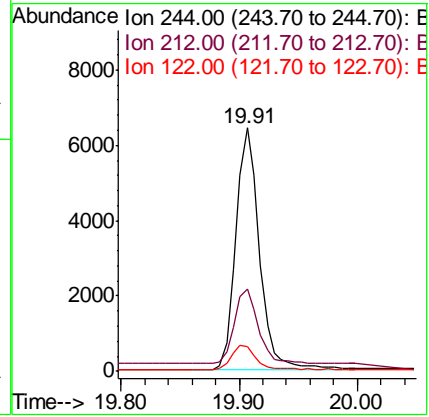
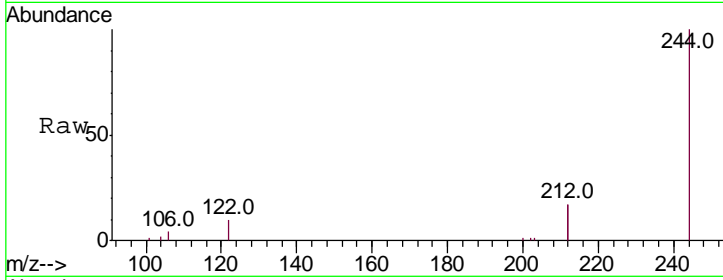




#29
 Terphenyl-d14
 Concen: 0.400 ng
 RT: 19.91 min Scan# 1537
 Delta R.T. 0.00 min
 Lab File: BE098256.D
 Acq: 21 Nov 2018 10:50

Instrument :
 BNA_E
 ClientSampled :
 PB114965BL

Tgt Ion	Resp	Lower	Upper
244	100		
212	33.9	26.8	40.2
122	10.1	7.0	10.6



#34
 Perylene-d12
 Concen: 0.400 ng
 RT: 24.01 min Scan# 2273
 Delta R.T. -0.01 min
 Lab File: BE098256.D
 Acq: 21 Nov 2018 10:50

Tgt Ion	Resp	Lower	Upper
264	100		
260	25.6	19.9	29.9
265	28.9	21.3	31.9

