

Data Path : Z:\HPCHEM1\BNA E\DATA\BE112215\  
 Data File : BE091281.D  
 Acq On : 21 Nov 2015 18:02  
 Operator : UM/NP  
 Sample : G4345-17  
 Misc :  
 ALS Vial : 12 Sample Multiplier: 1

**Instrument :**  
 BNA\_E  
**ClientSampleId :**  
 A4J62

**Manual Integrations**  
**APPROVED**  
 Mmdadoda  
 11/23/2015 2:14:27 PM

Quant Time: Nov 23 10:29:05 2015  
 Quant Method : Z:\HPCHEM1\BNA E\METHODS\SOM02.2-EPA-SIM-BE102715.M  
 Quant Title : ASP BNA STANDARDS FOR 5 POINT CALIBRATION  
 QLast Update : Sun Nov 22 01:59:17 2015  
 Response via : Initial Calibration

Internal Standards	R.T.	QIon	Response	Conc	Units	Dev(Min)
1) 1,4-Dichlorobenzene-d4	6.87	152	3098	0.40	ng/ul	-0.02
4) Naphthalene-d8	9.54	136	14785	0.40	ng/ul	-0.02
8) Acenaphthene-d10	13.36	164	8355	0.40	ng/ul	0.00
12) Phenanthrene-d10	16.08	188	19925m	0.40	ng/ul	-0.01
18) Chrysene-d12	20.23	240	21181	0.40	ng/ul	0.00
22) Perylene-d12	22.11	264	16452m	0.40	ng/ul	0.00
<b>System Monitoring Compounds</b>						
2) 1,4-Dioxane-d8	2.92	96	21573	9.68	ng/uL	-0.03
6) 2-Methylnaphthalene-d10	11.05	152	5353	0.27	ng/ul	0.00
16) Fluoranthene-d10	18.07	212	14364	0.26	ng/ul	0.00
<b>Target Compounds</b>						
						<b>Ovalue</b>
13) Pentachlorophenol	15.86	266	218	0.12	ng/ul	96
14) Phenanthrene	16.11	178	14169	0.06	ng/ul	95
17) Fluoranthene	18.10	202	10129	0.04	ng/ul	85
21) Chrysene	20.26	228	1643	0.03	ng/ul#	90

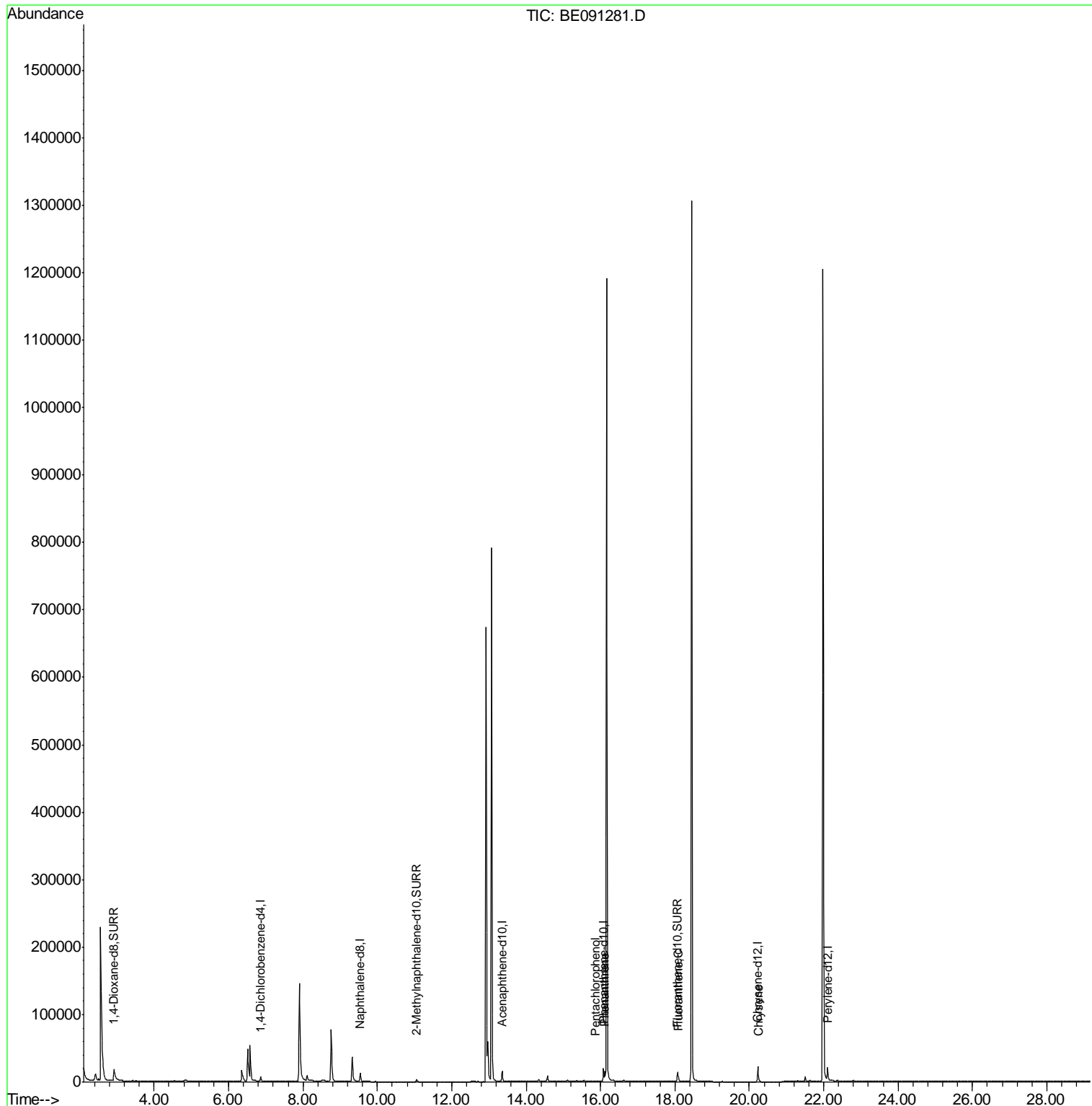
(#) = qualifier out of range (m) = manual integration (+) = signals summed

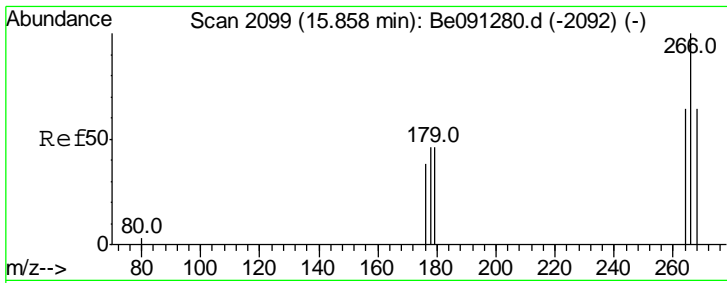
Data Path : Z:\HPCHEM1\BNA E\DATA\BE112215\  
 Data File : BE091281.D  
 Acq On : 21 Nov 2015 18:02  
 Operator : UM/NP  
 Sample : G4345-17  
 Misc :  
 ALS Vial : 12 Sample Multiplier: 1

**Instrument :**  
 BNA\_E  
**ClientSampleId :**  
 A4J62

**Manual Integrations**  
**APPROVED**  
 Mmdadoda  
 11/23/2015 2:14:27 PM

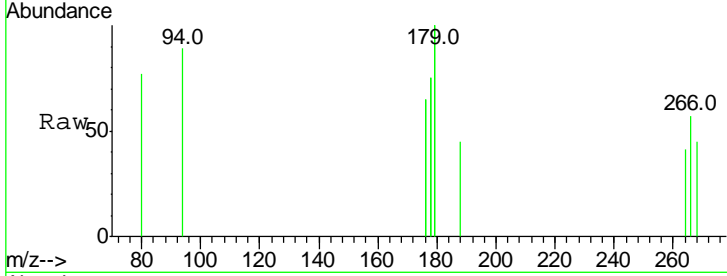
Quant Time: Nov 23 10:29:05 2015  
 Quant Method : Z:\HPCHEM1\BNA E\METHODS\SOM02.2-EPA-SIM-BE102715.M  
 Quant Title : ASP BNA STANDARDS FOR 5 POINT CALIBRATION  
 QLast Update : Sun Nov 22 01:59:17 2015  
 Response via : Initial Calibration





#13  
 Pentachlorophenol  
 Concen: 0.12 ng/ul  
 RT: 15.86 min Scan# 2099  
 Delta R.T. -0.00 min  
 Lab File: BE091281.D  
 Acq: 21 Nov 2015 18:02

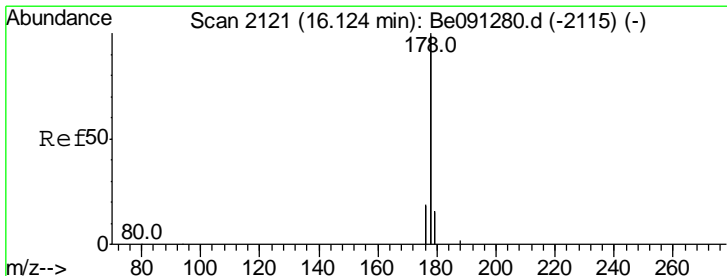
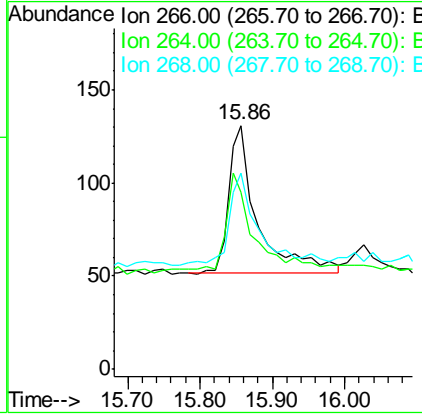
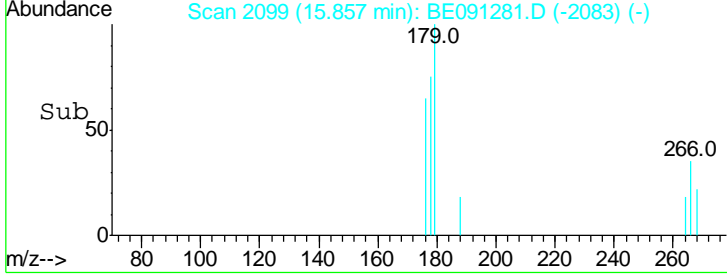
Instrument :  
 BNA\_E  
 ClientSampled :  
 A4J62



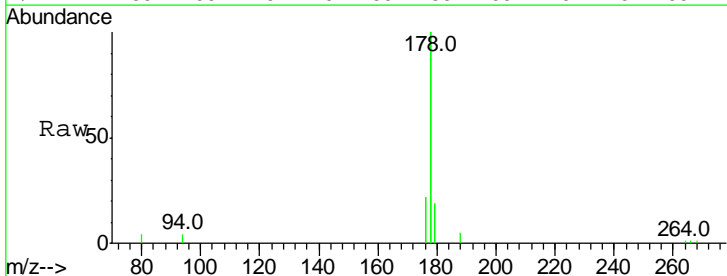
Tgt Ion: 266 Resp: 218

Ion	Ratio	Lower	Upper
266	100		
264	71.1	53.5	80.3
268	64.7	54.2	81.2

Manual Integrations  
 APPROVED  
 Mmdadoda  
 11/23/2015 2:14:27 PM

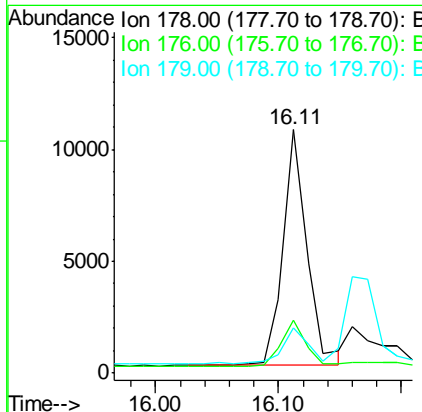
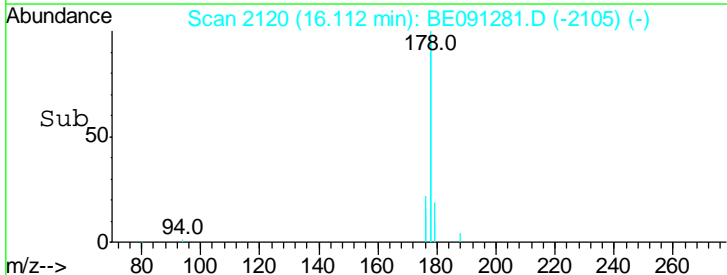


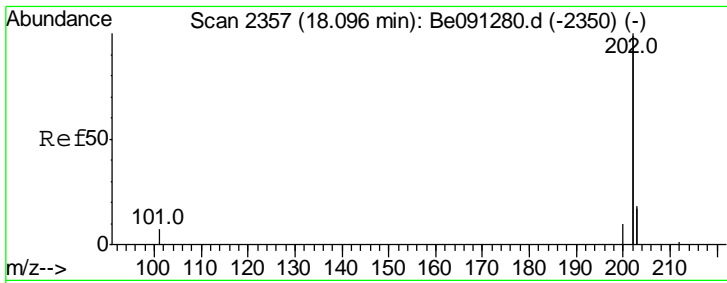
#14  
 Phenanthrene  
 Concen: 0.06 ng/ul  
 RT: 16.11 min Scan# 2120  
 Delta R.T. -0.01 min  
 Lab File: BE091281.D  
 Acq: 21 Nov 2015 18:02



Tgt Ion: 178 Resp: 14169

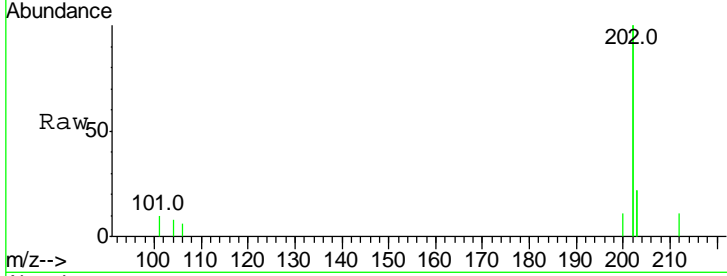
Ion	Ratio	Lower	Upper
178	100		
176	21.8	16.2	24.4
179	18.8	12.8	19.2





#17  
 Fluoranthene  
 Concen: 0.04 ng/ul  
 RT: 18.10 min Scan# 2357  
 Delta R.T. -0.00 min  
 Lab File: BE091281.D  
 Acq: 21 Nov 2015 18:02

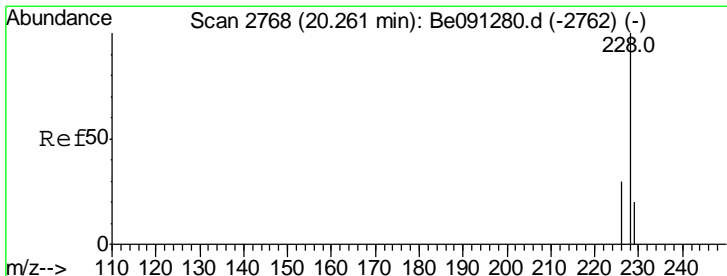
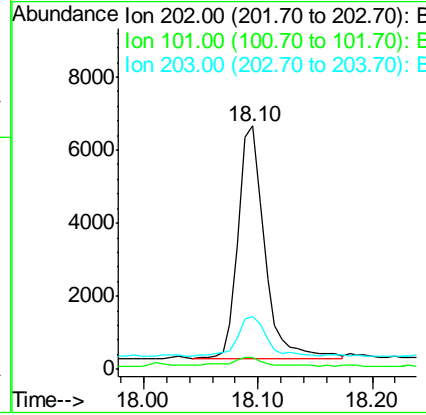
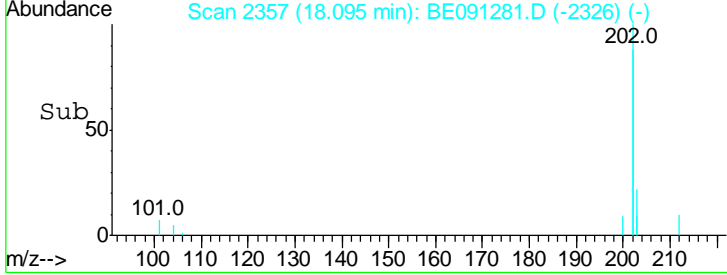
Instrument :  
 BNA\_E  
 ClientSampled :  
 A4J62



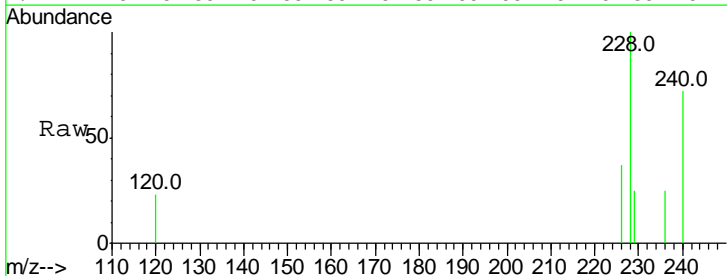
Tgt Ion: 202 Resp: 10129

Ion	Ratio	Lower	Upper
202	100		
101	4.8	0.0	33.1
203	21.7	0.0	37.2

Manual Integrations  
 APPROVED  
 Mmdadoda  
 11/23/2015 2:14:27 PM



#21  
 Chrysene  
 Concen: 0.03 ng/ul  
 RT: 20.26 min Scan# 2769  
 Delta R.T. 0.00 min  
 Lab File: BE091281.D  
 Acq: 21 Nov 2015 18:02



Tgt Ion: 228 Resp: 1643

Ion	Ratio	Lower	Upper
228	100		
226	36.7	25.7	38.5
229	25.2	15.2	22.8#

