

Data Path : Z:\SVOASRV\HPCHEM1\BNA E\DATA\BE121019\
 Data File : BE100808.D
 Acq On : 10 Dec 2019 12:47
 Operator : JU
 Sample : K6184-02
 Misc :
 ALS Vial : 5 Sample Multiplier: 1

Instrument :
 BNA_E
 ClientSampleId :
 RE134D1-20191202

Quant Time: Dec 10 14:30:23 2019
 Quant Method : Z:\SVOASRV\HPCHEM1\BNA E\METHODS\8270-SIM-BE120419.M
 Quant Title : ASP BNA STANDARDS FOR 5 POINT CALIBRATION
 QLast Update : Wed Dec 04 17:18:11 2019
 Response via : Initial Calibration

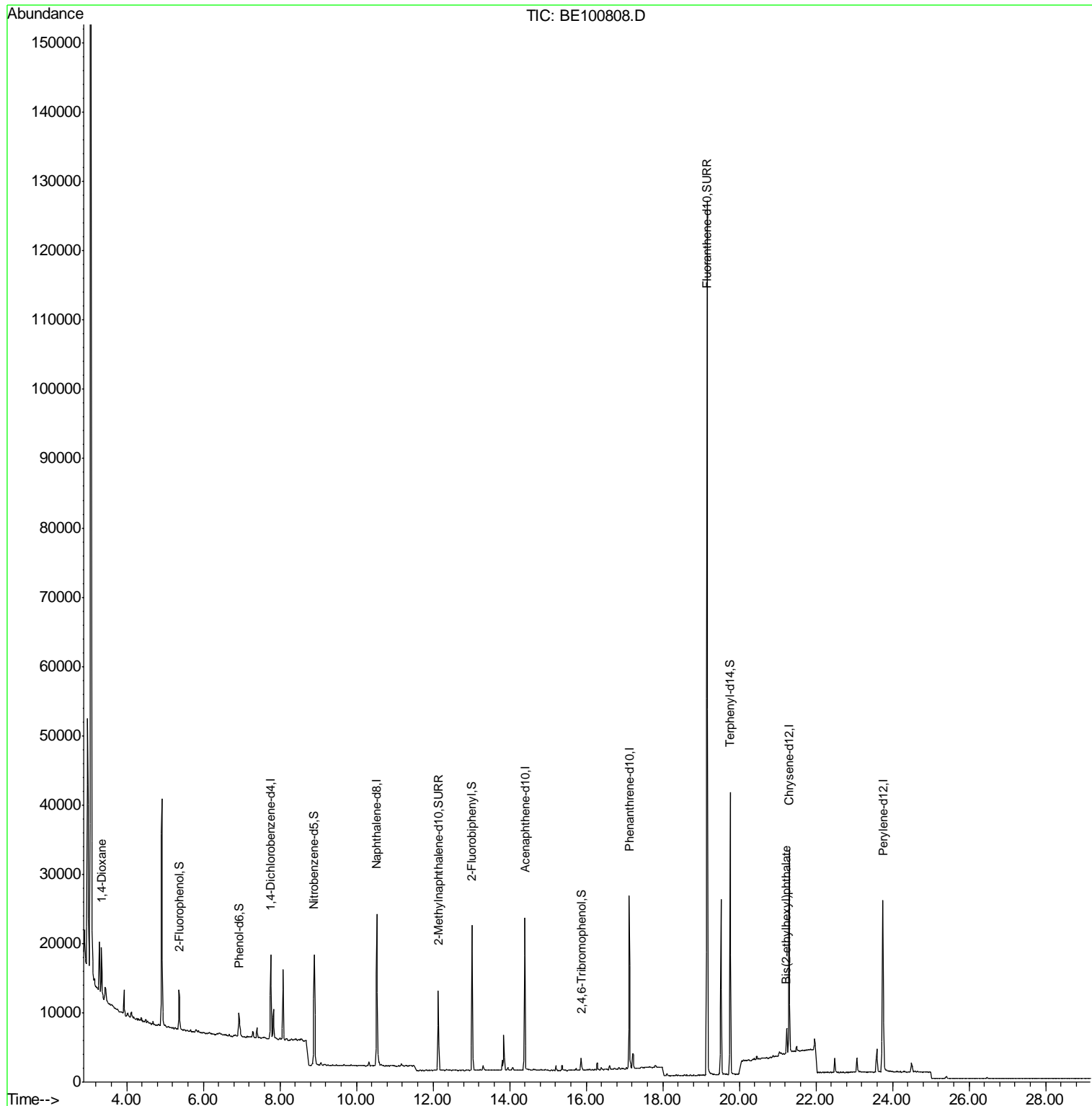
Internal Standards	R.T.	QIon	Response	Conc	Units	Dev(Min)
1) 1,4-Dichlorobenzene-d4	7.76	152	5409	0.40	ng	0.00
7) Naphthalene-d8	10.54	136	24297	0.40	ng	0.00
13) Acenaphthene-d10	14.40	164	14073	0.40	ng	0.00
19) Phenanthrene-d10	17.12	188	33693	0.40	ng	-0.01
27) Chrysene-d12	21.31	240	28810	0.40	ng	0.00
34) Perylene-d12	23.75	264	35893	0.40	ng	-0.01
System Monitoring Compounds						
4) 2-Fluorophenol	5.38	112	2948	0.23	ng	0.00
5) Phenol-d6	6.93	99	2980	0.15	ng	0.00
8) Nitrobenzene-d5	8.90	82	6277	0.54	ng	0.00
11) 2-Methylnaphthalene-d10	12.14	152	14855	0.42	ng	0.00
14) 2,4,6-Tribromophenol	15.88	330	1102	0.70	ng	0.00
15) 2-Fluorobiphenyl	13.02	172	21413	0.38	ng	-0.01
25) Fluoranthene-d10	19.16	212	161881	0.41	ng	0.00
29) Terphenyl-d14	19.76	244	33346	0.48	ng	0.00
Target Compounds						
2) 1,4-Dioxane	3.34	88	4309	0.437	ng	# 65
32) Bis(2-ethylhexyl)phthalate	21.23	149	5817	0.036	ng	# 99

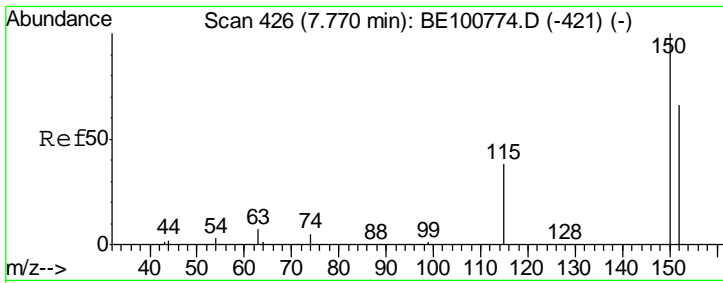
(#) = qualifier out of range (m) = manual integration (+) = signals summed

Data Path : Z:\SVOASRV\HPCHEM1\BNA E\DATA\BE121019\
 Data File : BE100808.D
 Acq On : 10 Dec 2019 12:47
 Operator : JU
 Sample : K6184-02
 Misc :
 ALS Vial : 5 Sample Multiplier: 1

Instrument :
 BNA_E
 ClientSampleId :
 RE134D1-20191202

Quant Time: Dec 10 14:30:23 2019
 Quant Method : Z:\SVOASRV\HPCHEM1\BNA E\METHODS\8270-SIM-BE120419.M
 Quant Title : ASP BNA STANDARDS FOR 5 POINT CALIBRATION
 QLast Update : Wed Dec 04 17:18:11 2019
 Response via : Initial Calibration

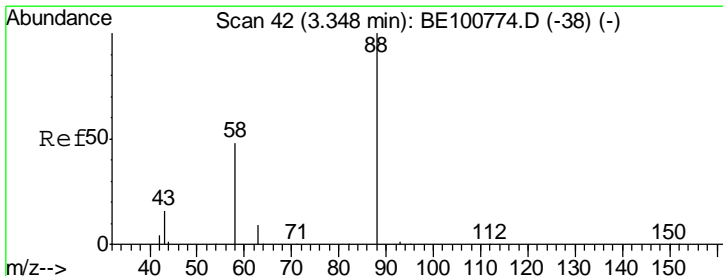
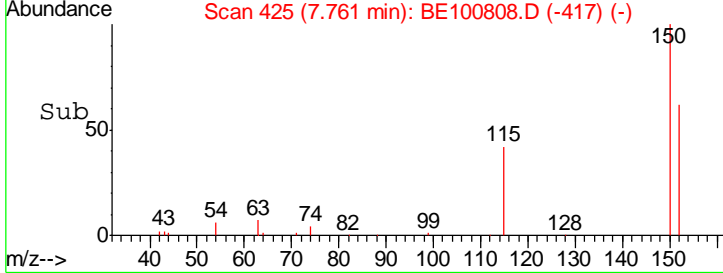
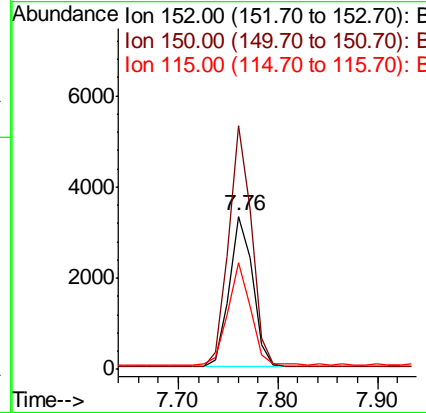
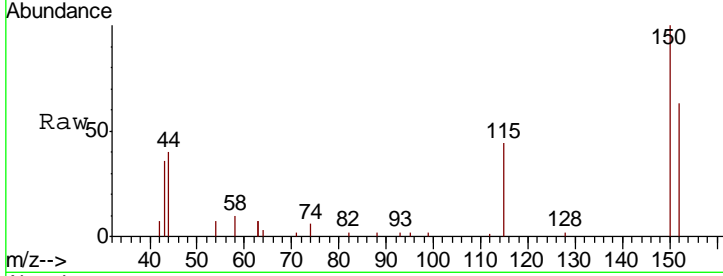




#1
 1,4-Dichlorobenzene-d4
 Concen: 0.400 ng
 RT: 7.76 min Scan# 425
 Delta R.T. -0.01 min
 Lab File: BE100808.D
 Acq: 10 Dec 2019 12:47

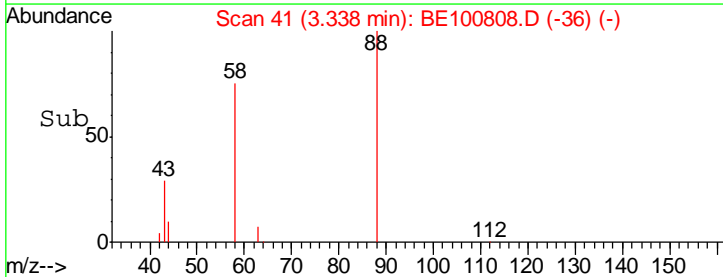
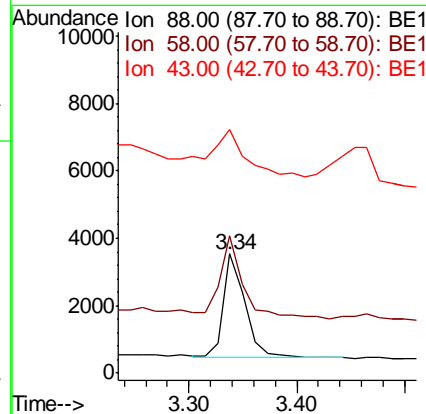
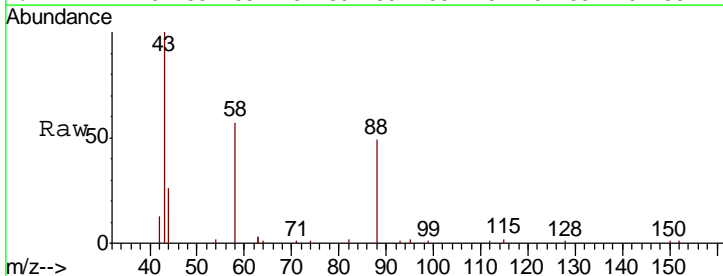
Instrument :
 BNA_E
ClientSampleId :
 RE134D1-20191202

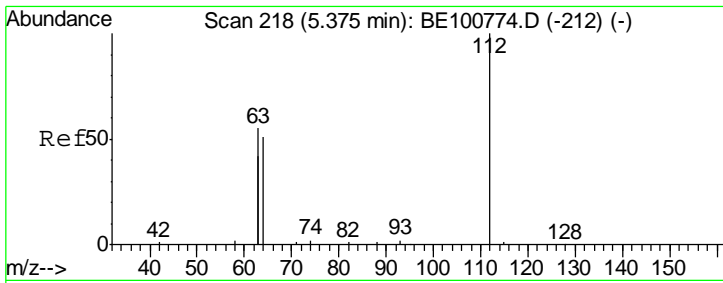
Tgt Ion	Resp	Lower	Upper
152	100		
150	158.9	120.6	181.0
115	69.2	47.4	71.2



#2
 1,4-Dioxane
 Concen: 0.437 ng
 RT: 3.34 min Scan# 41
 Delta R.T. -0.01 min
 Lab File: BE100808.D
 Acq: 10 Dec 2019 12:47

Tgt Ion	Resp	Lower	Upper
88	100		
58	85.0	52.5	78.7#
43	60.9	23.0	34.6#

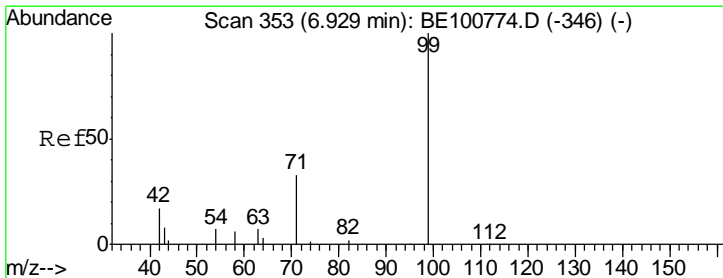
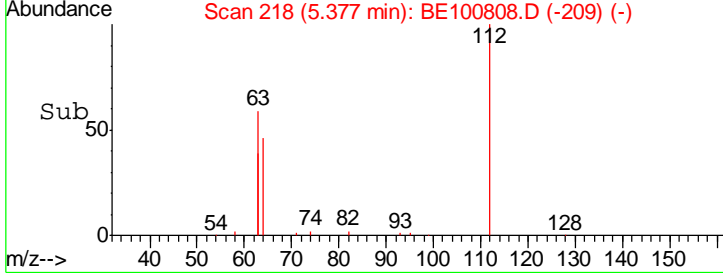
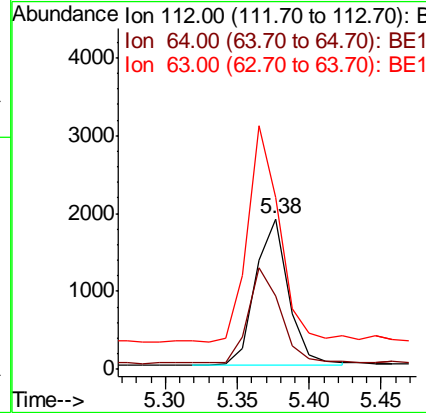
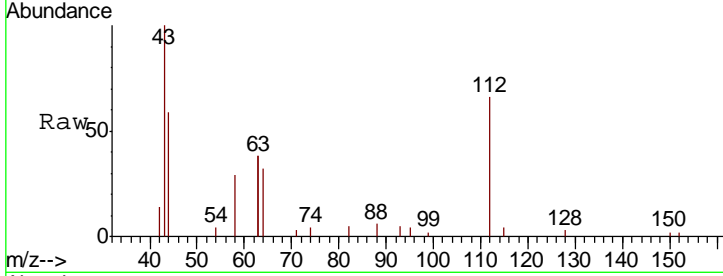




#4
 2-Fluorophenol
 Concen: 0.230 ng
 RT: 5.38 min Scan# 218
 Delta R.T. 0.00 min
 Lab File: BE100808.D
 Acq: 10 Dec 2019 12:47

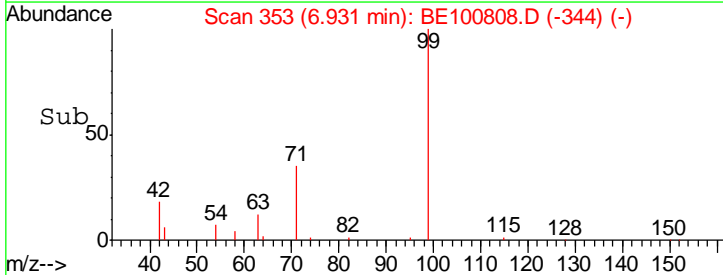
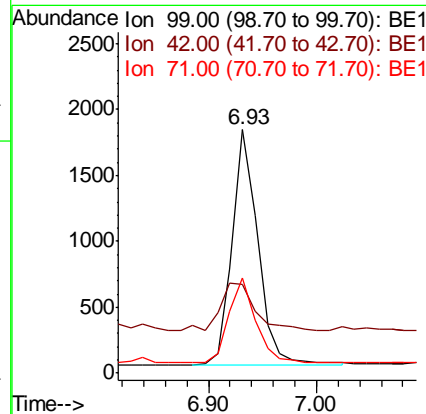
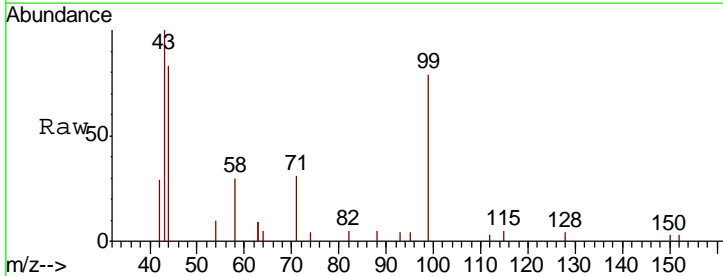
Instrument :
 BNA_E
 ClientSampleId :
 RE134D1-20191202

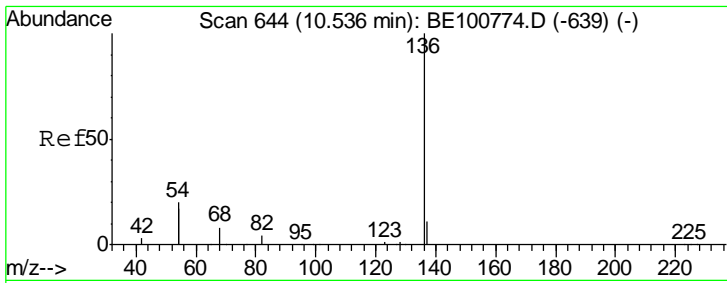
Tgt Ion	Resp	Lower	Upper
112	2948		
64	64.5	54.1	81.1
63	143.6	113.2	169.8



#5
 Phenol-d6
 Concen: 0.154 ng
 RT: 6.93 min Scan# 353
 Delta R.T. 0.00 min
 Lab File: BE100808.D
 Acq: 10 Dec 2019 12:47

Tgt Ion	Resp	Lower	Upper
99	2980		
42	27.4	19.1	28.7
71	36.7	27.7	41.5

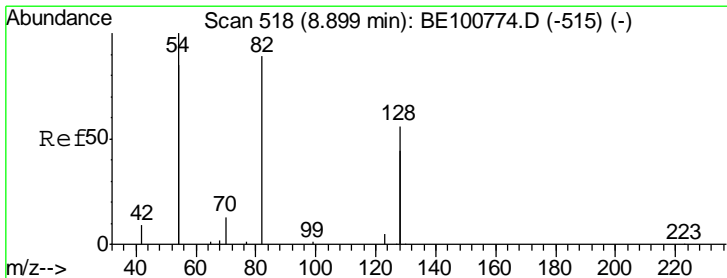
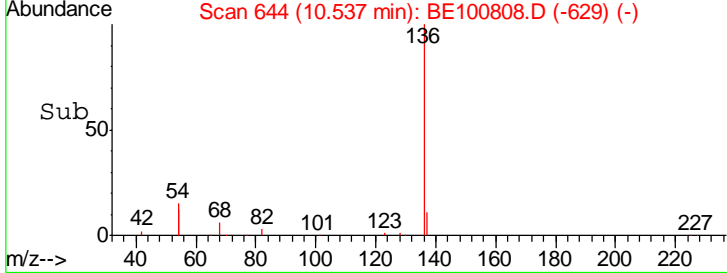
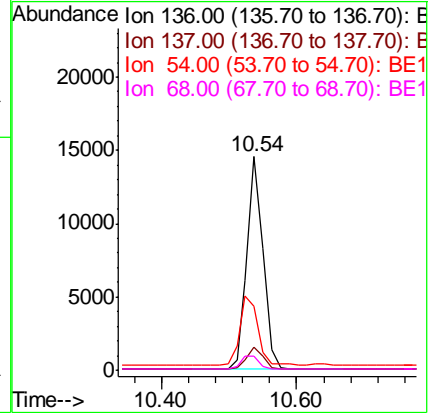
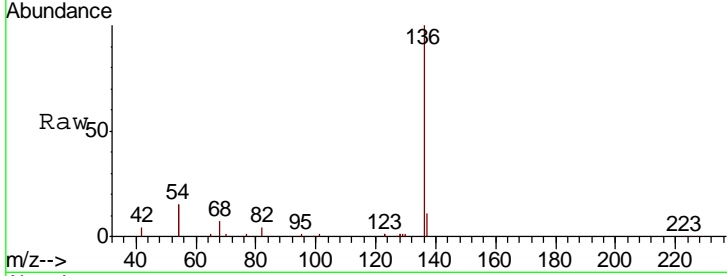




#7
 Naphthalene-d8
 Concen: 0.400 ng
 RT: 10.54 min Scan# 644
 Delta R.T. 0.00 min
 Lab File: BE100808.D
 Acq: 10 Dec 2019 12:47

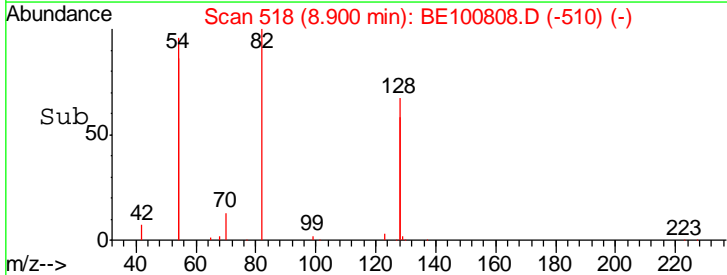
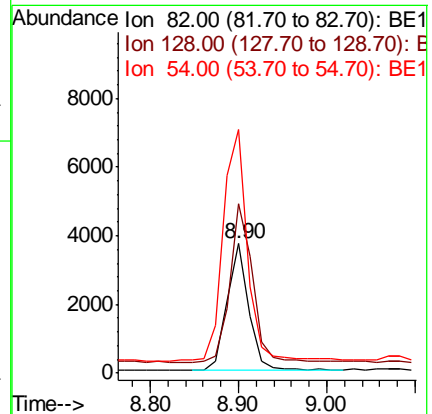
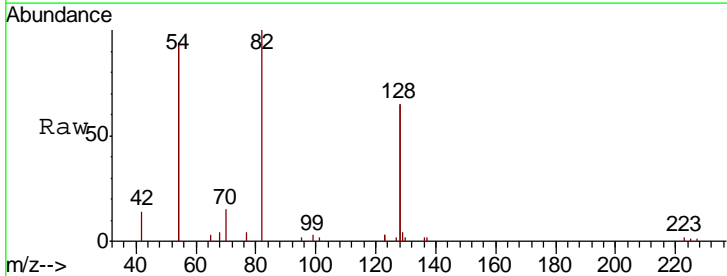
Instrument :
 BNA_E
 ClientSampleId :
 RE134D1-20191202

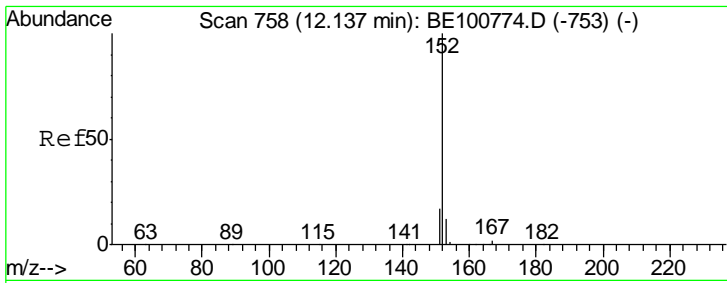
Tgt Ion	Resp	Lower	Upper
136	100		
137	11.0	9.4	14.0
54	29.7	31.1	46.7#
68	6.7	6.6	10.0



#8
 Nitrobenzene-d5
 Concen: 0.542 ng
 RT: 8.90 min Scan# 518
 Delta R.T. 0.00 min
 Lab File: BE100808.D
 Acq: 10 Dec 2019 12:47

Tgt Ion	Resp	Lower	Upper
82	100		
128	130.7	97.0	145.4
54	187.9	171.8	257.6

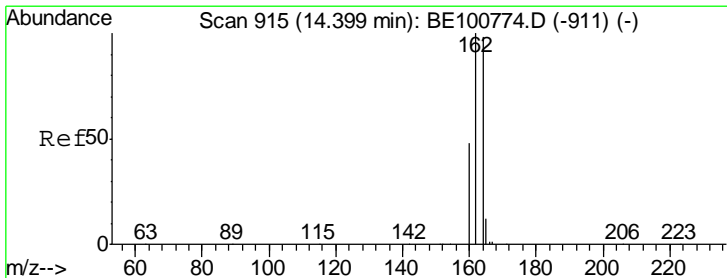
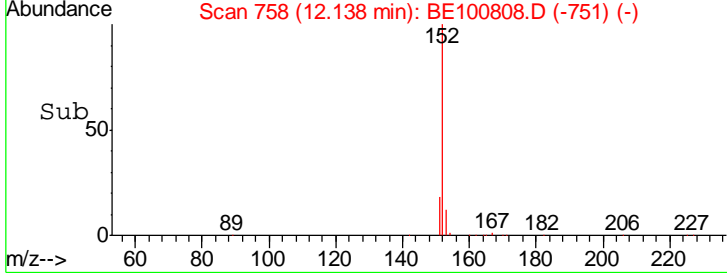
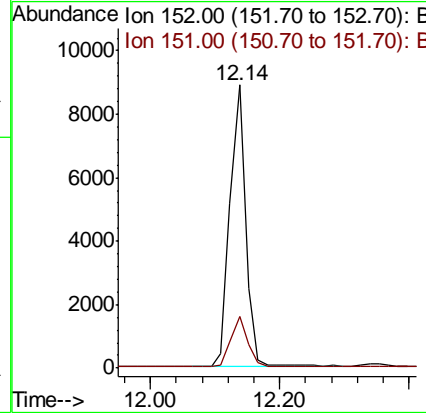
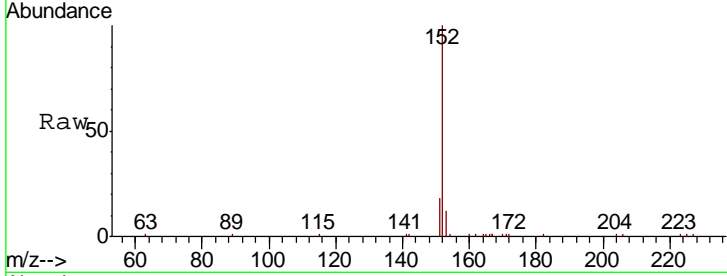




#11
 2-Methylnaphthalene-d10
 Concen: 0.422 ng
 RT: 12.14 min Scan# 758
 Delta R.T. 0.00 min
 Lab File: BE100808.D
 Acq: 10 Dec 2019 12:47

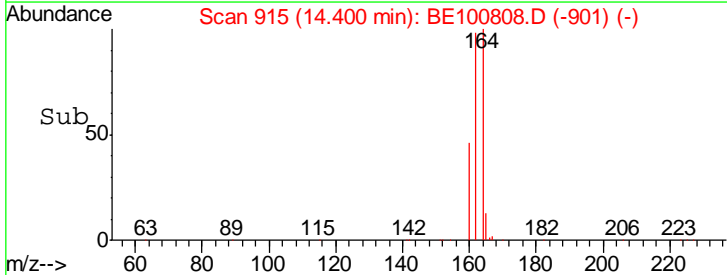
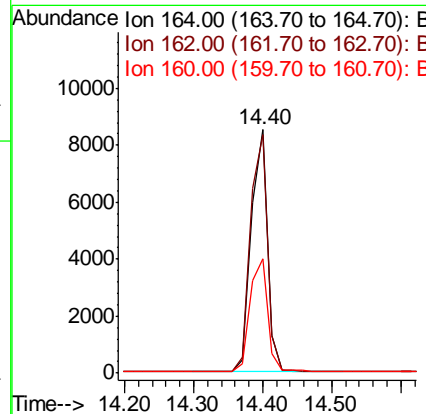
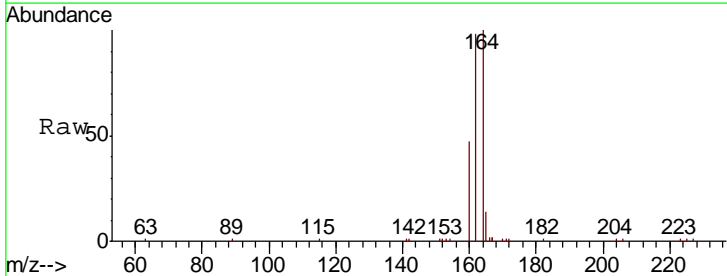
Instrument :
 BNA_E
ClientSampleId :
 RE134D1-20191202

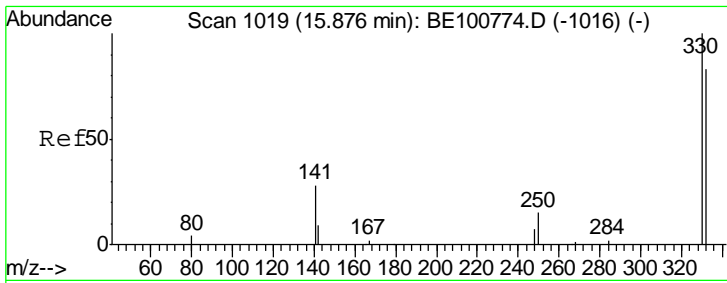
Tgt Ion	Resp	Lower	Upper
152	14855		
151	18.8	15.8	23.8



#13
 Acenaphthene-d10
 Concen: 0.400 ng
 RT: 14.40 min Scan# 915
 Delta R.T. 0.00 min
 Lab File: BE100808.D
 Acq: 10 Dec 2019 12:47

Tgt Ion	Resp	Lower	Upper
164	14073		
162	97.8	81.4	122.0
160	46.8	39.4	59.0

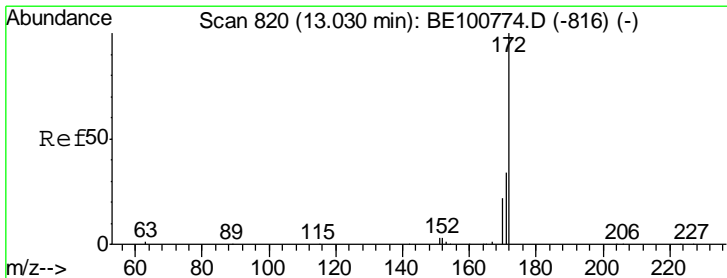
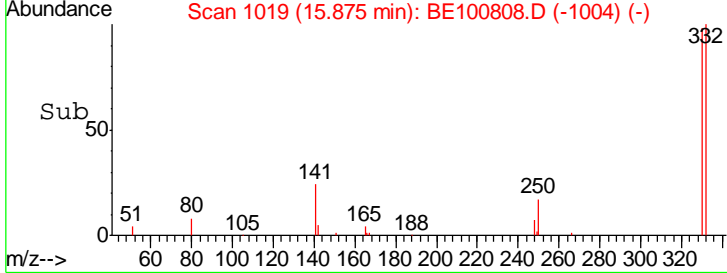
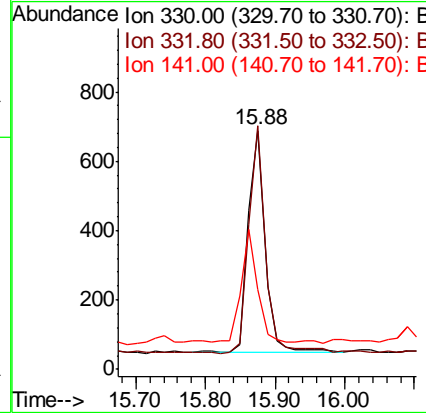
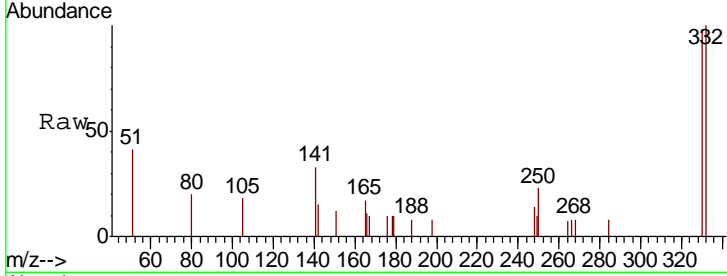




#14
 2,4,6-Tribromophenol
 Concen: 0.704 ng
 RT: 15.88 min Scan# 1019
 Delta R.T. -0.00 min
 Lab File: BE100808.D
 Acq: 10 Dec 2019 12:47

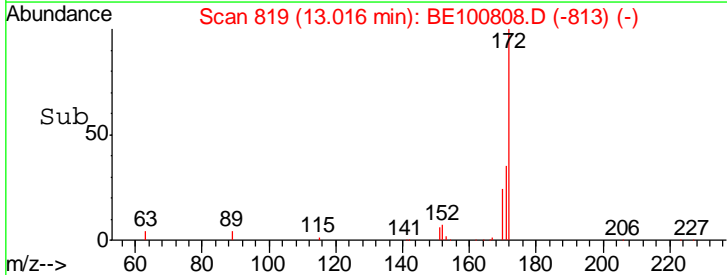
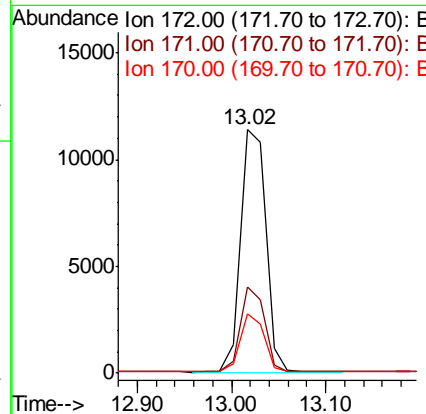
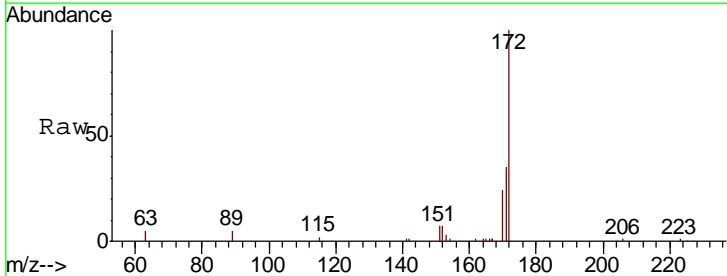
Instrument :
 BNA_E
 ClientSampleId :
 RE134D1-20191202

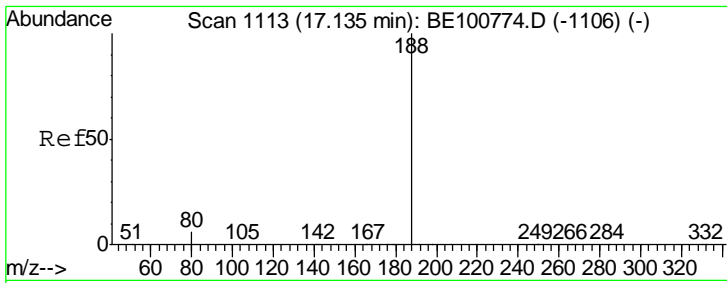
Tgt Ion	Resp	Lower	Upper
330	1102		
332	98.6	69.4	104.2
141	48.0	51.1	76.7#



#15
 2-Fluorobiphenyl
 Concen: 0.384 ng
 RT: 13.02 min Scan# 819
 Delta R.T. -0.01 min
 Lab File: BE100808.D
 Acq: 10 Dec 2019 12:47

Tgt Ion	Resp	Lower	Upper
172	21413		
171	35.5	27.2	40.8
170	24.5	18.0	27.0

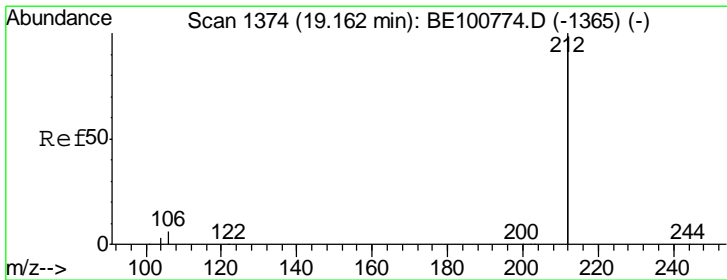
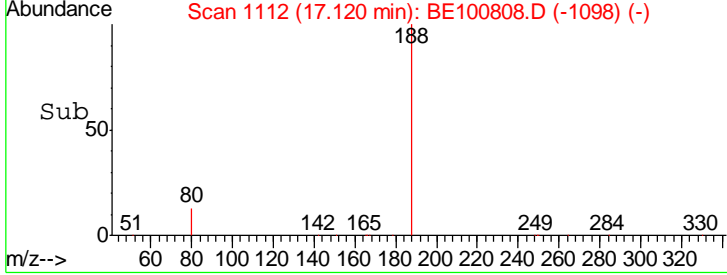
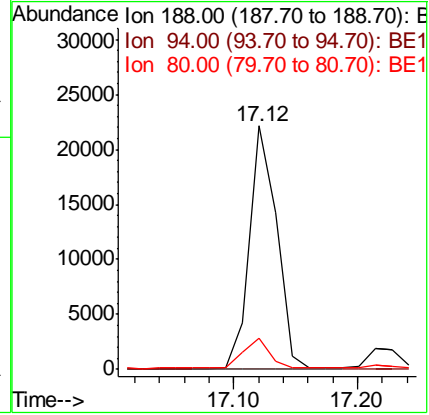
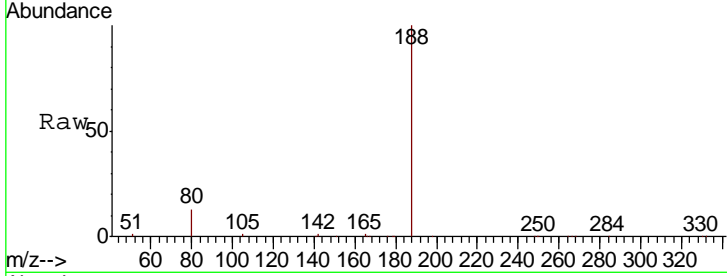




#19
 Phenanthrene-d10
 Concen: 0.400 ng
 RT: 17.12 min Scan# 1112
 Delta R.T. -0.01 min
 Lab File: BE100808.D
 Acq: 10 Dec 2019 12:47

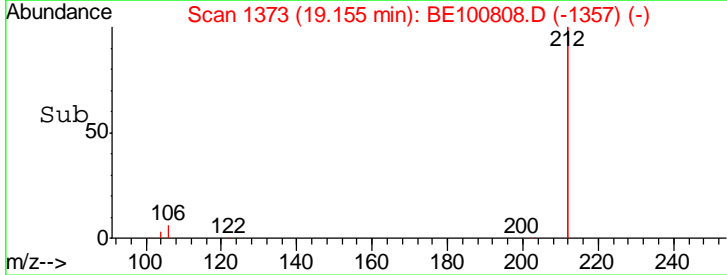
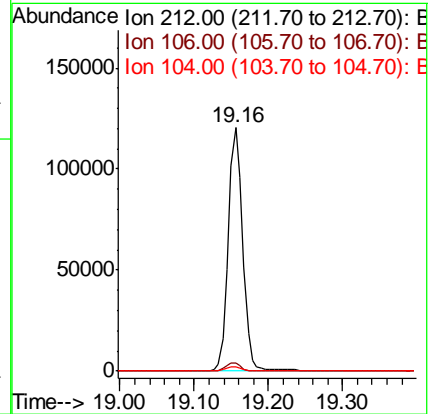
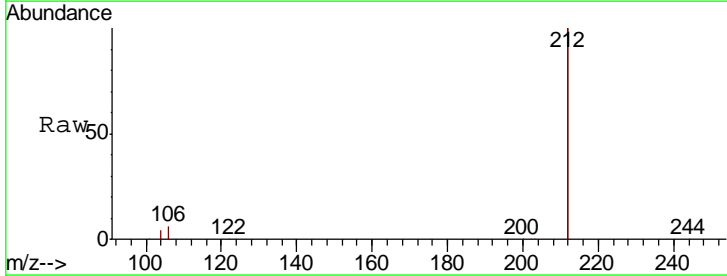
Instrument : BNA_E
 ClientSampleId : RE134D1-20191202

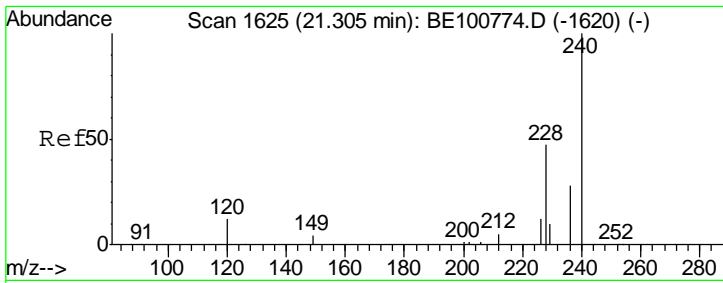
Tgt Ion	Resp	Lower	Upper
188	100		
94	0.0	0.0	0.0
80	13.0	5.2	7.8#



#25
 Fluoranthene-d10
 Concen: 0.407 ng
 RT: 19.16 min Scan# 1373
 Delta R.T. -0.01 min
 Lab File: BE100808.D
 Acq: 10 Dec 2019 12:47

Tgt Ion	Resp	Lower	Upper
212	100		
106	3.3	2.6	3.8
104	1.8	1.4	2.2

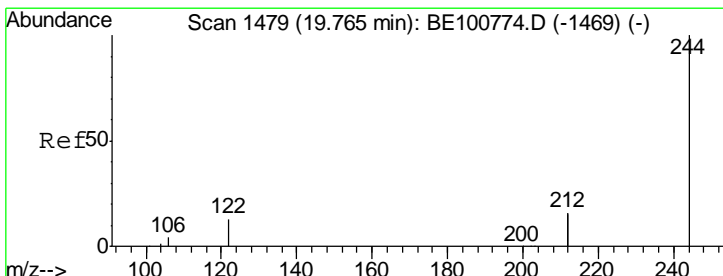
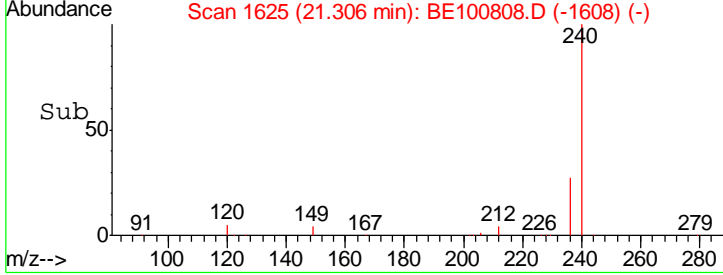
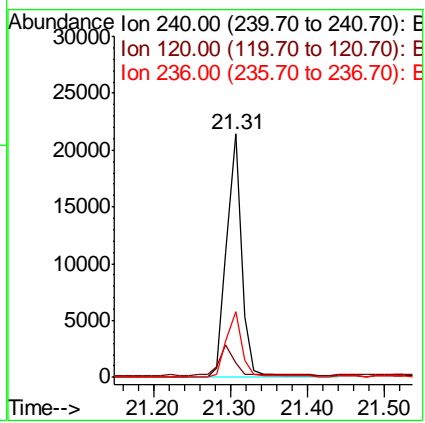
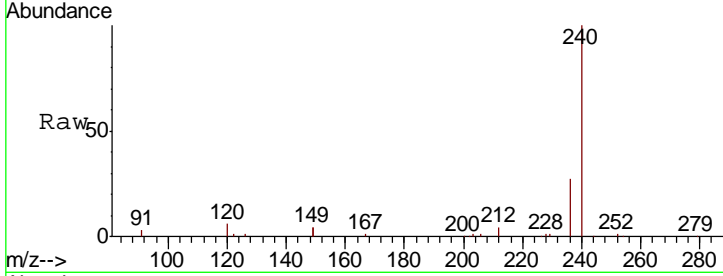




#27
 Chrysene-d12
 Concen: 0.400 ng
 RT: 21.31 min Scan# 1625
 Delta R.T. 0.00 min
 Lab File: BE100808.D
 Acq: 10 Dec 2019 12:47

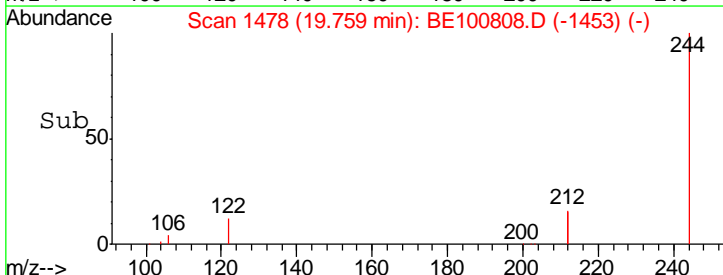
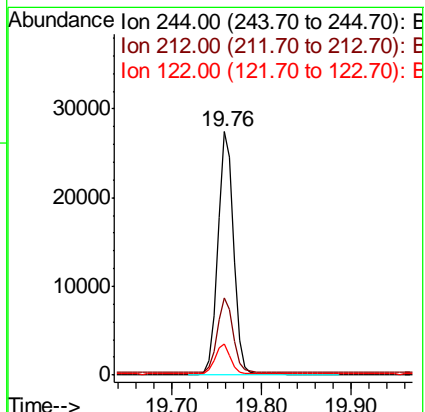
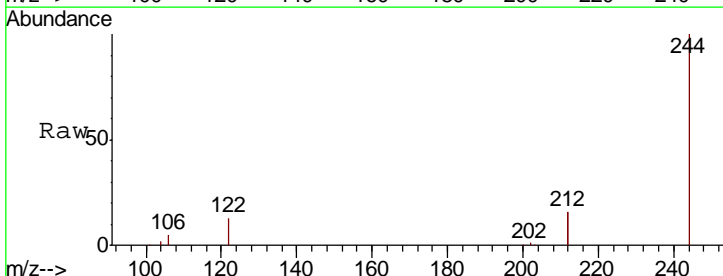
Instrument :
 BNA_E
 ClientSampleId :
 RE134D1-20191202

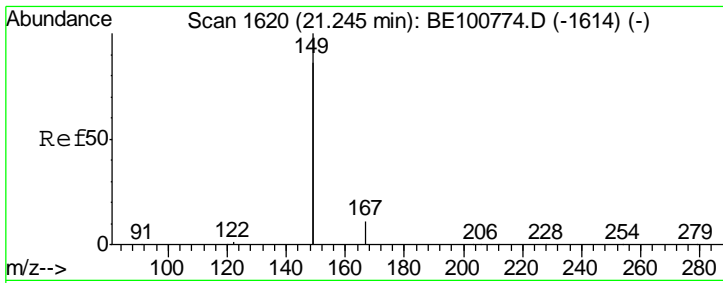
Tgt Ion	Resp	Lower	Upper
240	28810		
120	6.2	10.2	15.2#
236	27.0	22.3	33.5



#29
 Terphenyl-d14
 Concen: 0.483 ng
 RT: 19.76 min Scan# 1478
 Delta R.T. -0.01 min
 Lab File: BE100808.D
 Acq: 10 Dec 2019 12:47

Tgt Ion	Resp	Lower	Upper
244	33346		
212	31.6	26.2	39.4
122	12.9	10.2	15.4

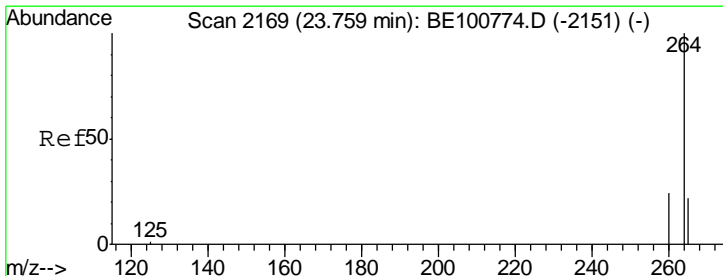
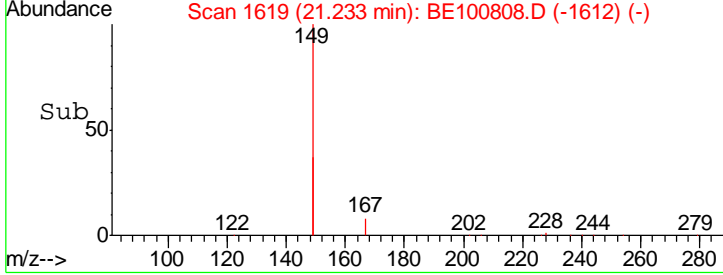
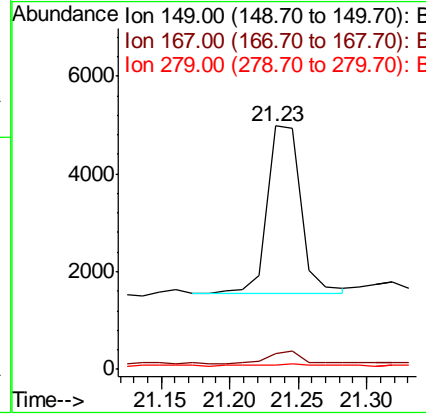
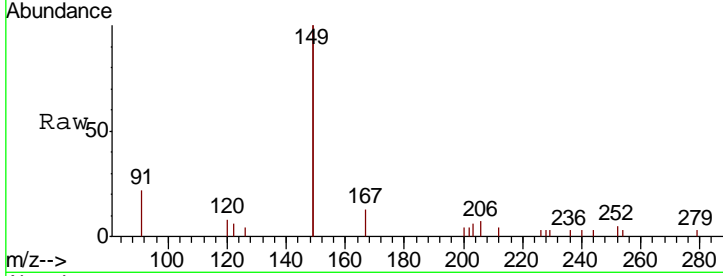




#32
 Bis(2-ethylhexyl)phthalate
 Concen: 0.036 ng
 RT: 21.23 min Scan# 1619
 Delta R.T. -0.01 min
 Lab File: BE100808.D
 Acq: 10 Dec 2019 12:47

Instrument :
 BNA_E
 ClientSampleID :
 RE134D1-20191202

Tgt Ion	Resp	Lower	Upper
149	5817		
167	6.8	5.0	7.6
279	1.2	0.7	1.1#



#34
 Perylene-d12
 Concen: 0.400 ng
 RT: 23.75 min Scan# 2166
 Delta R.T. -0.01 min
 Lab File: BE100808.D
 Acq: 10 Dec 2019 12:47

Tgt Ion	Resp	Lower	Upper
264	35893		
260	23.7	19.4	29.2
265	25.7	21.8	32.8

