

Data Path : Z:\SVOASRV\HPCHEM1\BNA E\DATA\BE121019\  
 Data File : BE100810.D  
 Acq On : 10 Dec 2019 14:35  
 Operator : JU  
 Sample : K6184-04MSD  
 Misc :  
 ALS Vial : 7 Sample Multiplier: 1

Instrument :  
 BNA\_E  
 ClientSampleId :  
 RE134D1-20191202MSD

Manual Integrations  
 APPROVED

mohammad  
 12/11/2019 2:29:43 PM

Quant Time: Dec 10 17:51:54 2019  
 Quant Method : Z:\SVOASRV\HPCHEM1\BNA E\METHODS\8270-SIM-BE120419.M  
 Quant Title : ASP BNA STANDARDS FOR 5 POINT CALIBRATION  
 QLast Update : Wed Dec 04 17:18:11 2019  
 Response via : Initial Calibration

Internal Standards	R.T.	QIon	Response	Conc	Units	Dev(Min)
1) 1,4-Dichlorobenzene-d4	7.76	152	5625	0.40	ng	-0.01
7) Naphthalene-d8	10.54	136	24384	0.40	ng	0.00
13) Acenaphthene-d10	14.40	164	13299	0.40	ng	0.00
19) Phenanthrene-d10	17.12	188	33362	0.40	ng	-0.01
27) Chrysene-d12	21.31	240	30932	0.40	ng	0.00
34) Perylene-d12	23.75	264	37088	0.40	ng	-0.01

## System Monitoring Compounds

4) 2-Fluorophenol	5.37	112	2828	0.21	ng	0.00
5) Phenol-d6	6.93	99	2673	0.13	ng	0.00
8) Nitrobenzene-d5	8.90	82	6719	0.58	ng	0.00
11) 2-Methylnaphthalene-d10	12.14	152	14876m	0.42	ng	0.00
14) 2,4,6-Tribromophenol	15.88	330	1219	0.82	ng	0.00
15) 2-Fluorobiphenyl	13.03	172	19978	0.38	ng	0.00
25) Fluoranthene-d10	19.16	212	159470	0.40	ng	0.00
29) Terphenyl-d14	19.76	244	31557	0.43	ng	0.00

## Target Compounds

Target Compounds	R.T.	QIon	Response	Conc	Units	Qvalue
2) 1,4-Dioxane	3.34	88	5833	0.569	ng	# 58
3) n-Nitrosodimethylamine	3.65	42	1448	0.173	ng	87
6) bis(2-Chloroethyl)ether	7.19	93	7619	0.391	ng	100
9) Naphthalene	10.59	128	99854	0.385	ng	100
10) Hexachlorobutadiene	10.89	225	3176	0.314	ng	97
12) 2-Methylnaphthalene	12.21	142	15740	0.389	ng	98
16) Acenaphthylene	14.11	152	22628	0.411	ng	99
17) Acenaphthene	14.46	154	14886	0.393	ng	99
18) Fluorene	15.43	166	19574	0.400	ng	99
20) 4-Bromophenyl-phenylether	16.33	248	6019	0.368	ng	97
21) Hexachlorobenzene	16.44	284	5908	0.332	ng	99
22) Pentachlorophenol	16.79	266	1823	1.482	ng	84
23) Phenanthrene	17.16	178	38306	0.379	ng	100
24) Anthracene	17.25	178	33894	0.401	ng	99
26) Fluoranthene	19.19	202	45029	0.373	ng	100
28) Pyrene	19.55	202	46497	0.463	ng	100
30) Benzo(a)anthracene	21.29	228	41745	0.458	ng	98
31) Chrysene	21.34	228	42427	0.396	ng	98
32) Bis(2-ethylhexyl)phthalate	21.25	149	72097	1.024	ng	100
33) Indeno(1,2,3-cd)pyrene	26.32	276	40039	0.429	ng	99
35) Benzo(b)fluoranthene	23.00	252	40795	0.402	ng	99
36) Benzo(k)fluoranthene	23.05	252	42305	0.372	ng	98
37) Benzo(a)pyrene	23.64	252	35869	0.408	ng	99
38) Dibenzo(a,h)anthracene	26.35	278	33718	0.386	ng	99
39) Benzo(g,h,i)perylene	27.11	276	29118	0.311	ng	99

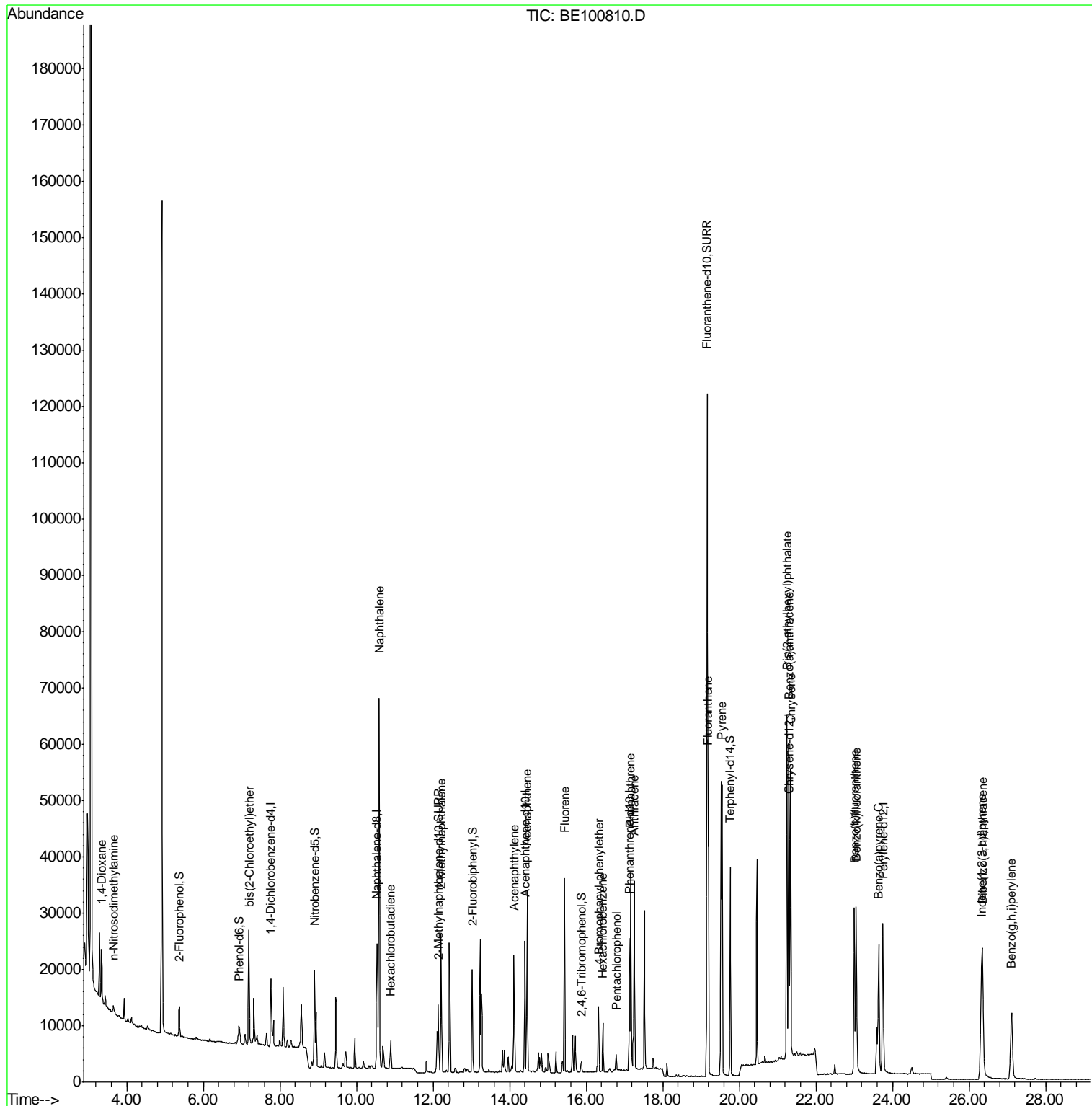
(#) = qualifier out of range (m) = manual integration (+) = signals summed

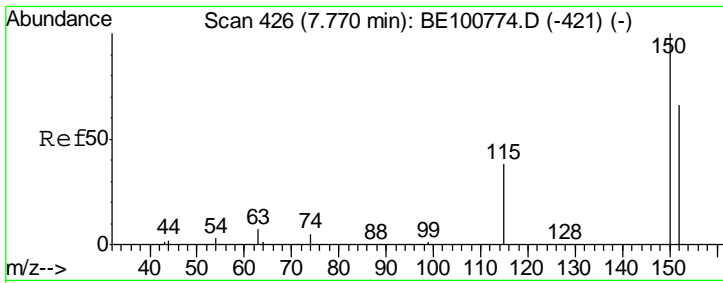
Data Path : Z:\SVOASRV\HPCHEM1\BNA E\DATA\BE121019\  
 Data File : BE100810.D  
 Acq On : 10 Dec 2019 14:35  
 Operator : JU  
 Sample : K6184-04MSD  
 Misc :  
 ALS Vial : 7 Sample Multiplier: 1

Instrument :  
 BNA\_E  
 ClientSampleId :  
 RE134D1-20191202MSD

Manual Integrations  
**APPROVED**  
 mohammad  
 12/11/2019 2:29:43 PM

Quant Time: Dec 10 17:51:54 2019  
 Quant Method : Z:\SVOASRV\HPCHEM1\BNA E\METHODS\8270-SIM-BE120419.M  
 Quant Title : ASP BNA STANDARDS FOR 5 POINT CALIBRATION  
 QLast Update : Wed Dec 04 17:18:11 2019  
 Response via : Initial Calibration



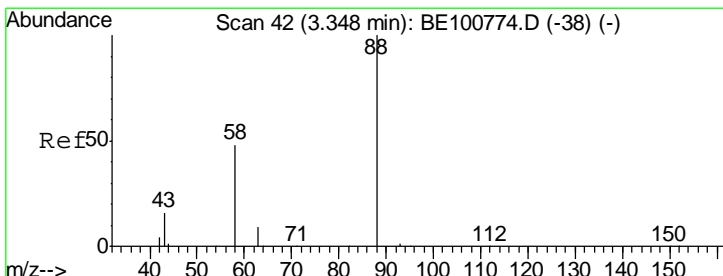
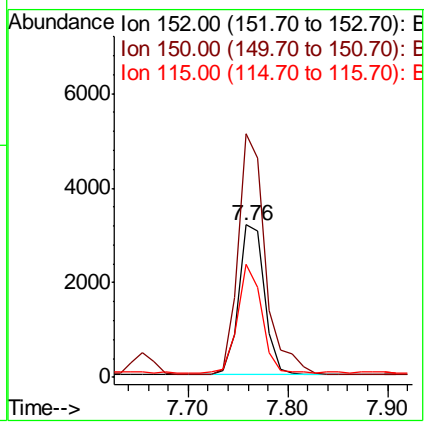
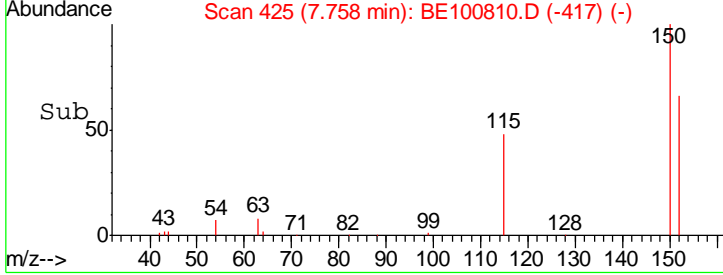
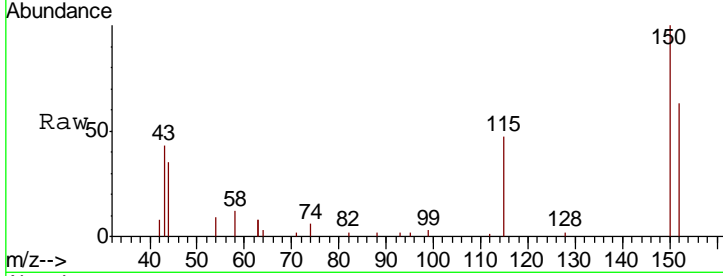


#1  
 1,4-Dichlorobenzene-d4  
 Concen: 0.400 ng  
 RT: 7.76 min Scan# 425  
 Delta R.T. -0.01 min  
 Lab File: BE100810.D  
 Acq: 10 Dec 2019 14:35

**Instrument :**  
 BNA\_E  
**ClientSampled :**  
 RE134D1-20191202MSD

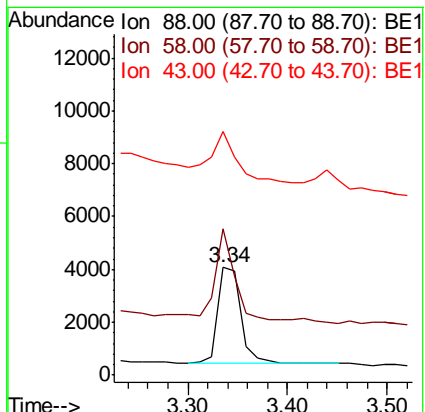
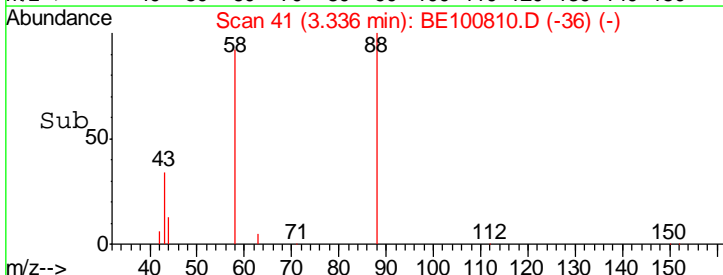
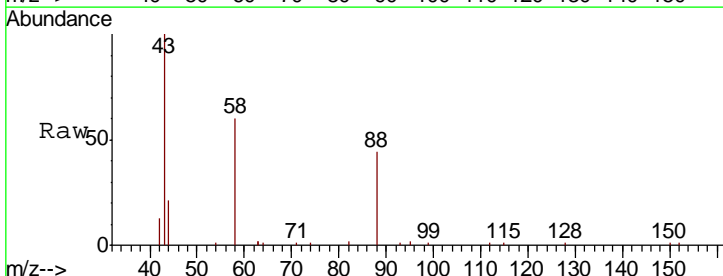
Tgt Ion	Resp	Lower	Upper
152	100		
150	159.4	120.6	181.0
115	74.2	47.4	71.2#

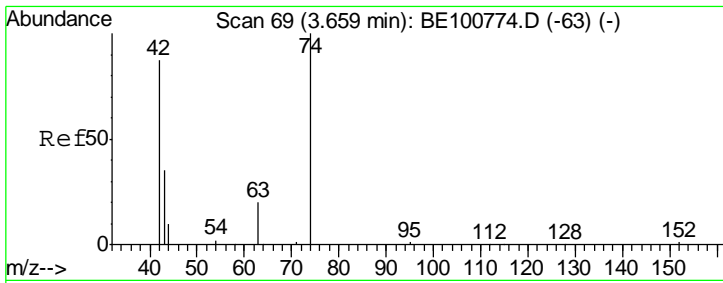
**Manual Integrations**  
**APPROVED**  
 mohammad  
 12/11/2019 2:29:43 PM



#2  
 1,4-Dioxane  
 Concen: 0.569 ng  
 RT: 3.34 min Scan# 41  
 Delta R.T. -0.01 min  
 Lab File: BE100810.D  
 Acq: 10 Dec 2019 14:35

Tgt Ion	Resp	Lower	Upper
88	100		
58	91.2	52.5	78.7#
43	63.2	23.0	34.6#





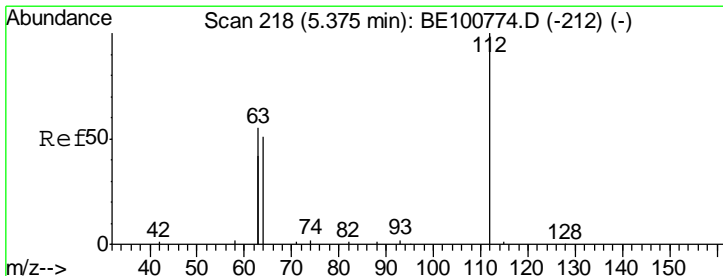
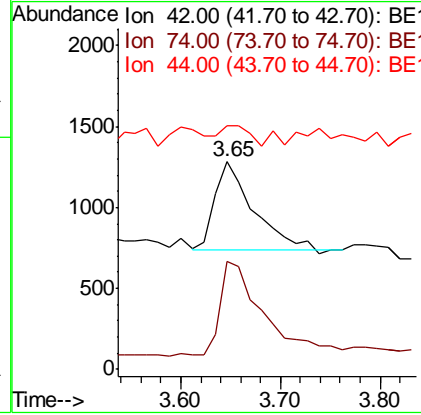
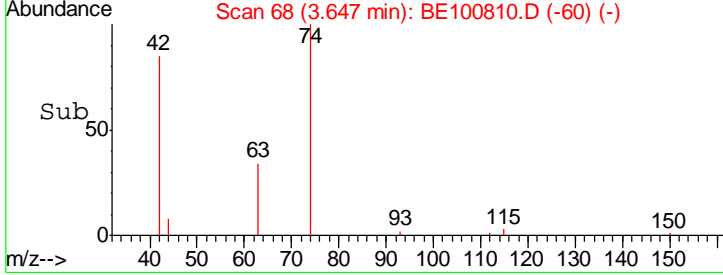
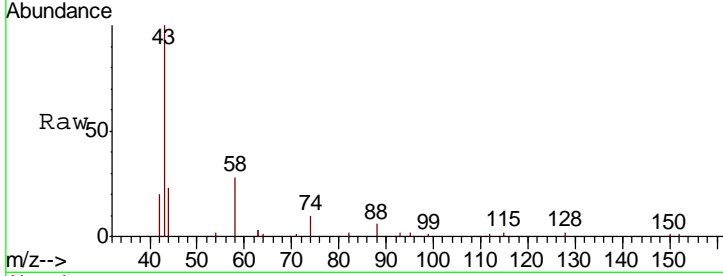
#3  
 n-Nitrosodimethylamine  
 Concen: 0.173 ng  
 RT: 3.65 min Scan# 68  
 Delta R.T. -0.01 min  
 Lab File: BE100810.D  
 Acq: 10 Dec 2019 14:35

**Instrument :**  
 BNA\_E  
**ClientSampleId :**  
 RE134D1-20191202MSD

Tgt Ion	Resp	Lower	Upper
42	100		
74	123.1	86.3	129.5
44	15.6	11.6	17.4

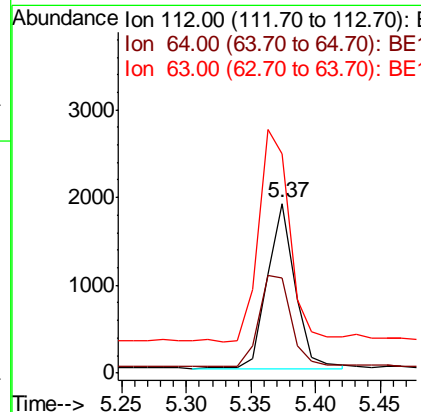
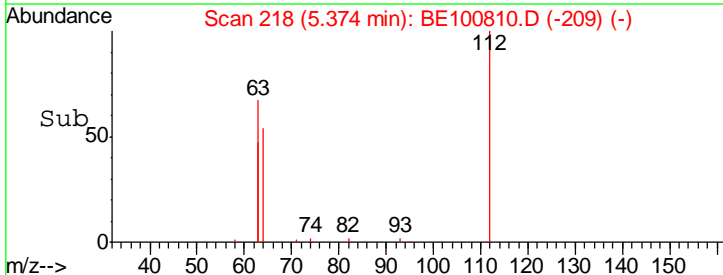
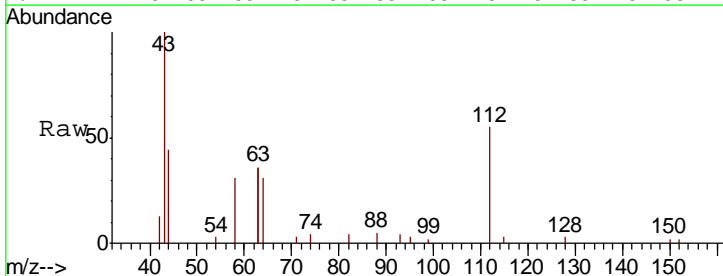
**Manual Integrations**  
**APPROVED**

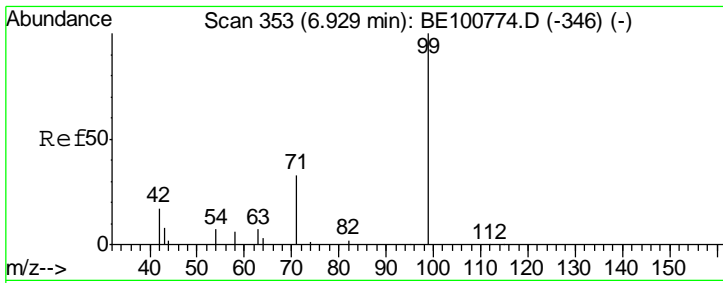
mohammad  
 12/11/2019 2:29:43 PM



#4  
 2-Fluorophenol  
 Concen: 0.212 ng  
 RT: 5.37 min Scan# 218  
 Delta R.T. -0.00 min  
 Lab File: BE100810.D  
 Acq: 10 Dec 2019 14:35

Tgt Ion	Resp	Lower	Upper
112	100		
64	66.0	54.1	81.1
63	142.9	113.2	169.8





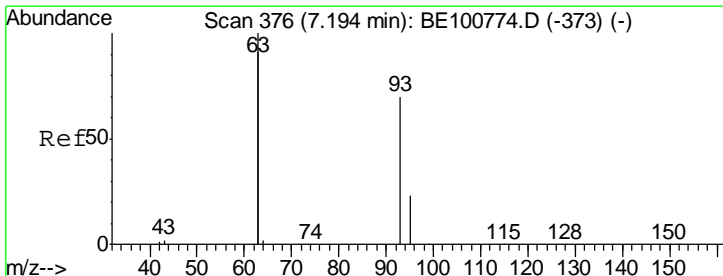
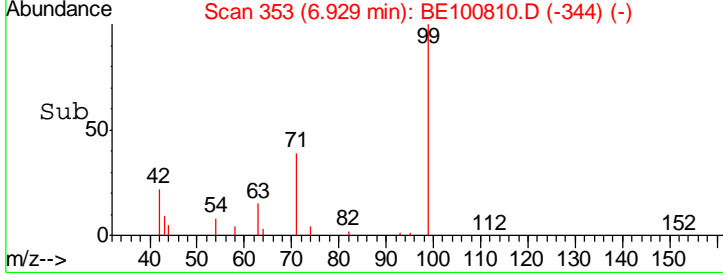
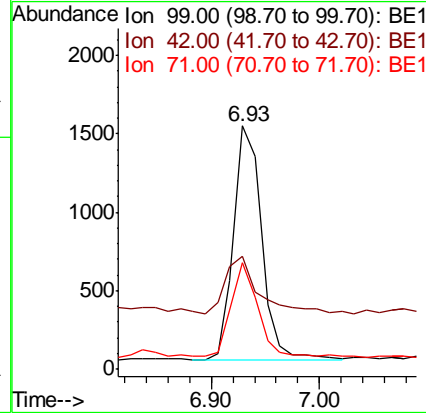
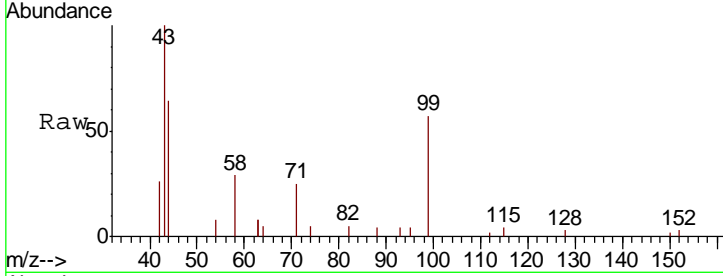
#5  
 Phenol-d6  
 Concen: 0.133 ng  
 RT: 6.93 min Scan# 353  
 Delta R.T. -0.00 min  
 Lab File: BE100810.D  
 Acq: 10 Dec 2019 14:35

**Instrument :**  
 BNA\_E  
**ClientSampled :**  
 RE134D1-20191202MSD

Tgt Ion	Resp	Lower	Upper
99	2673		
42	30.2	19.1	28.7#
71	37.8	27.7	41.5

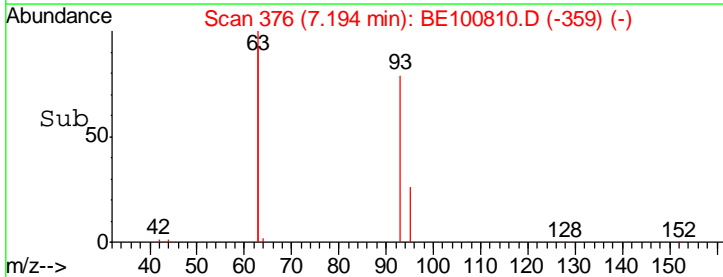
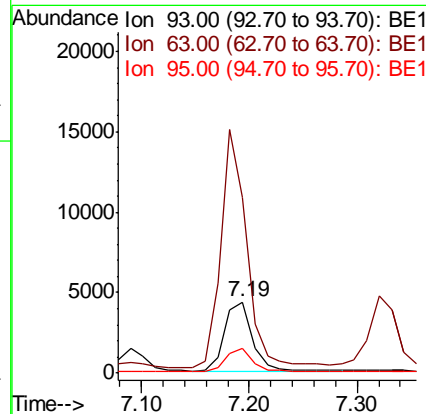
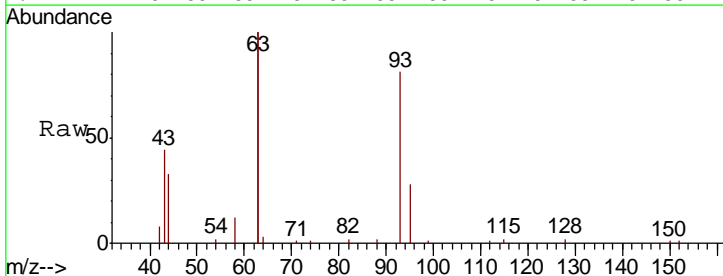
**Manual Integrations**  
**APPROVED**

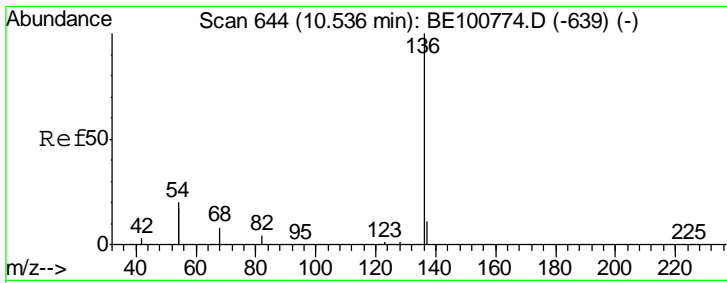
mohammad  
 12/11/2019 2:29:43 PM



#6  
 bis(2-Chloroethyl)ether  
 Concen: 0.391 ng  
 RT: 7.19 min Scan# 376  
 Delta R.T. -0.00 min  
 Lab File: BE100810.D  
 Acq: 10 Dec 2019 14:35

Tgt Ion	Resp	Lower	Upper
93	7619		
63	324.5	259.4	389.0
95	33.3	26.2	39.2





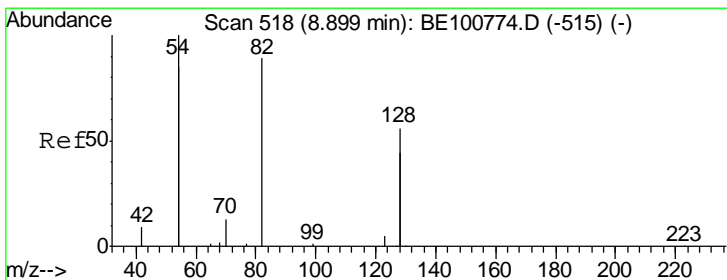
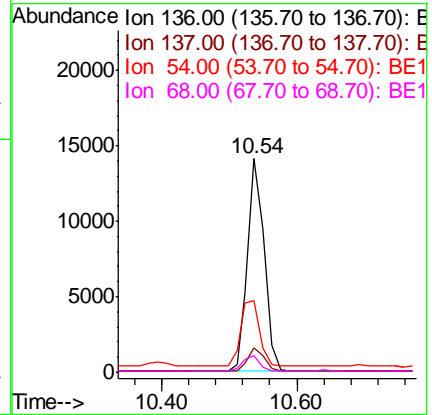
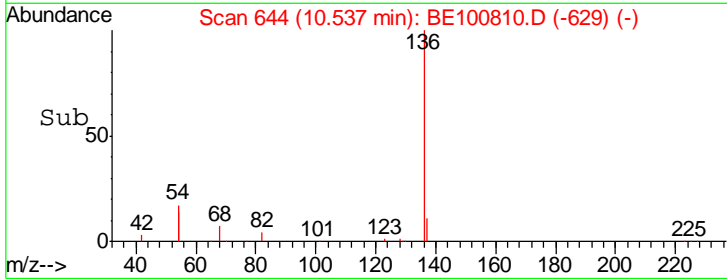
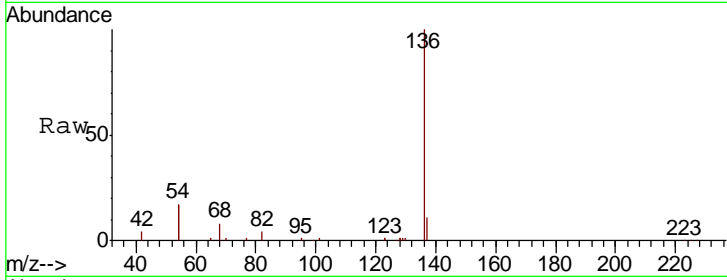
#7  
 Naphthalene-d8  
 Concen: 0.400 ng  
 RT: 10.54 min Scan# 644  
 Delta R.T. 0.00 min  
 Lab File: BE100810.D  
 Acq: 10 Dec 2019 14:35

**Instrument :**  
 BNA\_E  
**ClientSampled :**  
 RE134D1-20191202MSD

Tgt Ion	Resp	Lower	Upper
136	100		
137	11.2	9.4	14.0
54	33.8	31.1	46.7
68	7.6	6.6	10.0

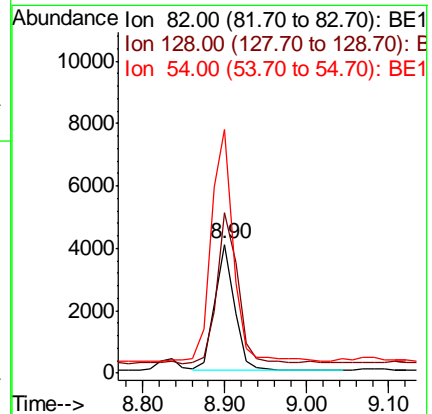
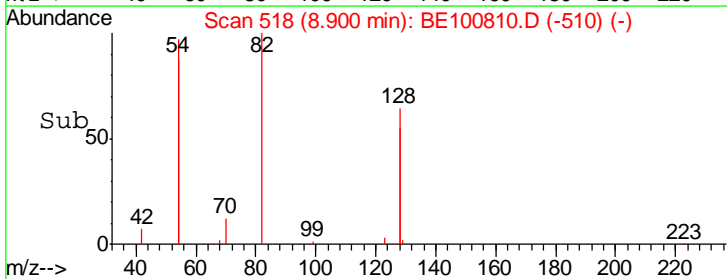
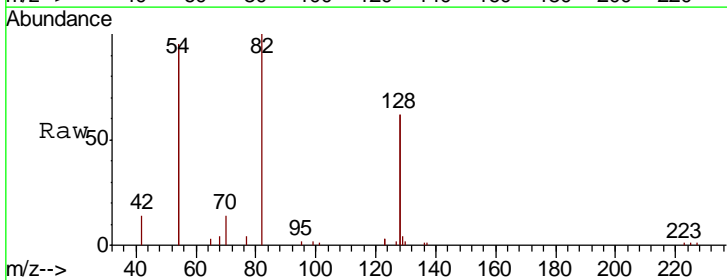
**Manual Integrations**  
**APPROVED**

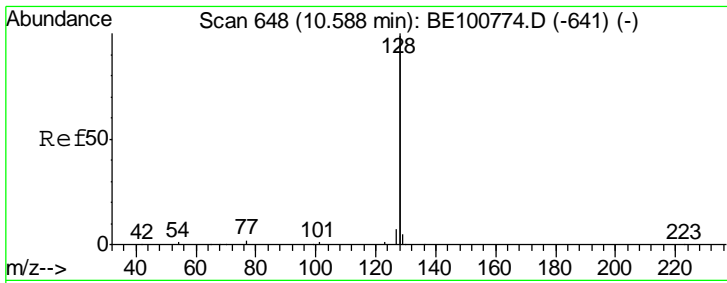
mohammad  
 12/11/2019 2:29:43 PM



#8  
 Nitrobenzene-d5  
 Concen: 0.579 ng  
 RT: 8.90 min Scan# 518  
 Delta R.T. 0.00 min  
 Lab File: BE100810.D  
 Acq: 10 Dec 2019 14:35

Tgt Ion	Resp	Lower	Upper
82	100		
128	124.6	97.0	145.4
54	189.4	171.8	257.6



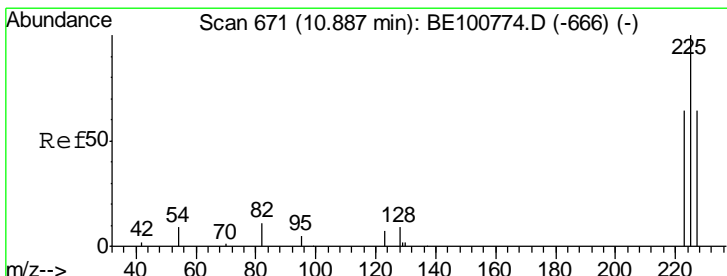
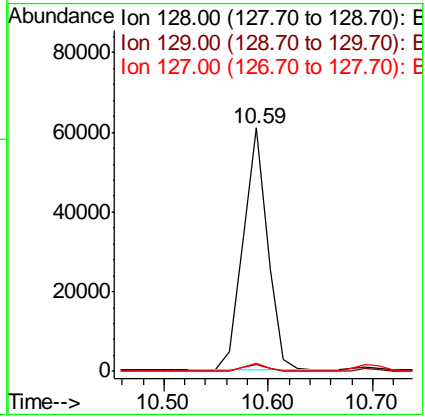
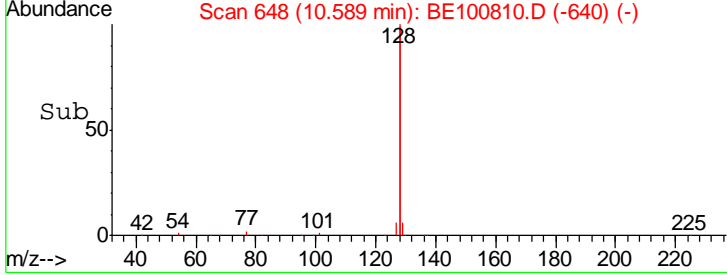
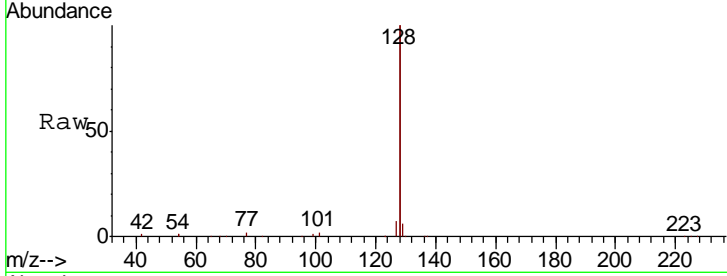


#9  
 Naphthalene  
 Concen: 0.385 ng  
 RT: 10.59 min Scan# 648  
 Delta R.T. 0.00 min  
 Lab File: BE100810.D  
 Acq: 10 Dec 2019 14:35

**Instrument :**  
 BNA\_E  
**ClientSampled :**  
 RE134D1-20191202MSD

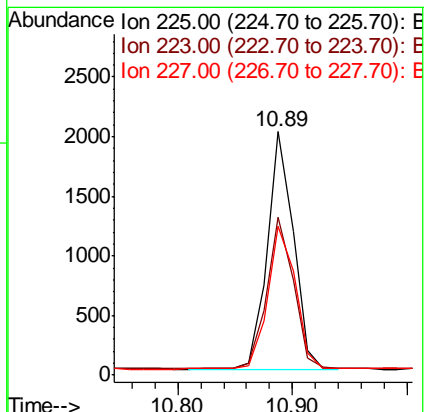
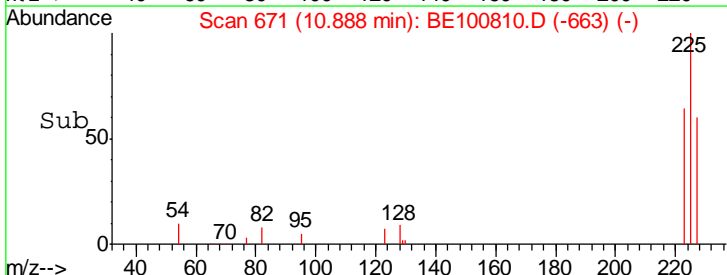
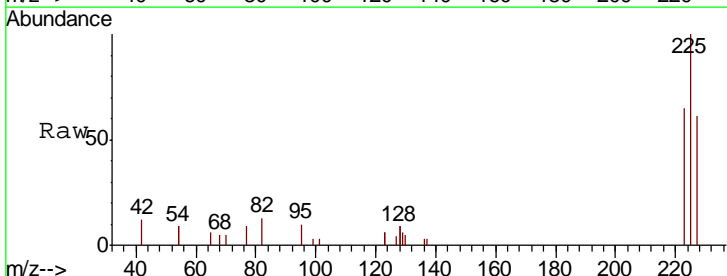
Tgt Ion	Resp	Lower	Upper
128	100		
129	2.9	2.2	3.4
127	3.3	2.7	4.1

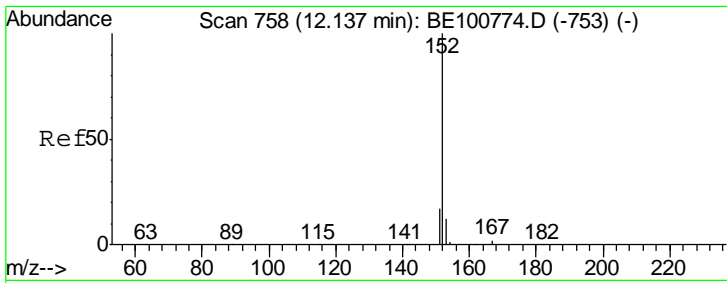
**Manual Integrations**  
**APPROVED**  
 mohammad  
 12/11/2019 2:29:43 PM



#10  
 Hexachlorobutadiene  
 Concen: 0.314 ng  
 RT: 10.89 min Scan# 671  
 Delta R.T. 0.00 min  
 Lab File: BE100810.D  
 Acq: 10 Dec 2019 14:35

Tgt Ion	Resp	Lower	Upper
225	100		
223	65.4	49.9	74.9
227	63.6	52.2	78.4





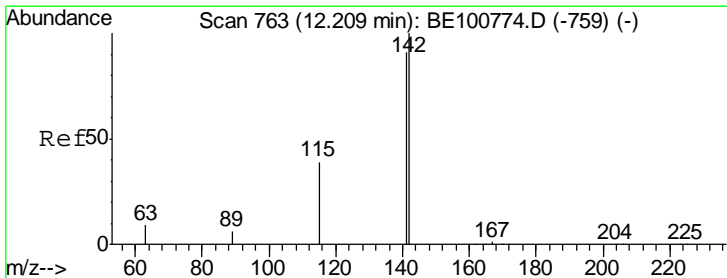
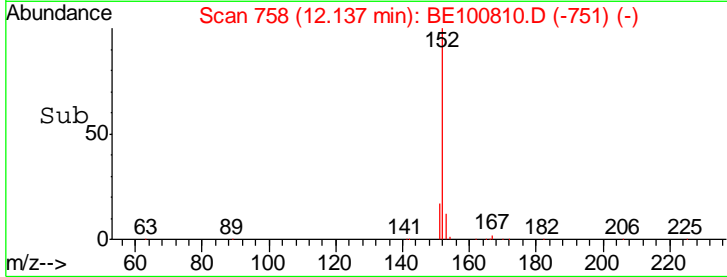
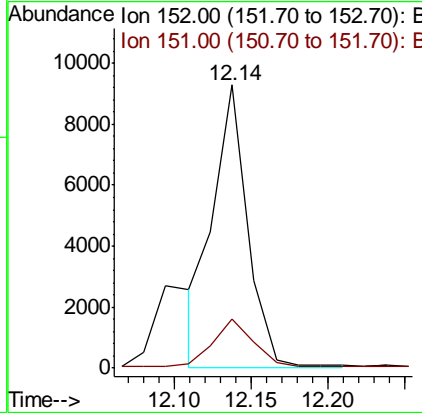
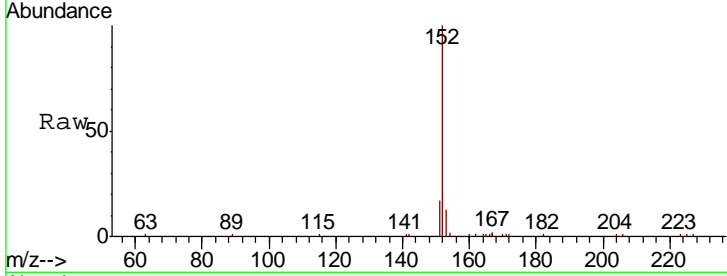
#11  
 2-Methylnaphthalene-d10  
 Concen: 0.421 ng m  
 RT: 12.14 min Scan# 758  
 Delta R.T. 0.00 min  
 Lab File: BE100810.D  
 Acq: 10 Dec 2019 14:35

**Instrument :**  
 BNA\_E  
**ClientSampleId :**  
 RE134D1-20191202MSD

Tgt Ion	Resp	Lower	Upper
152	14876		
151	18.9	15.8	23.8

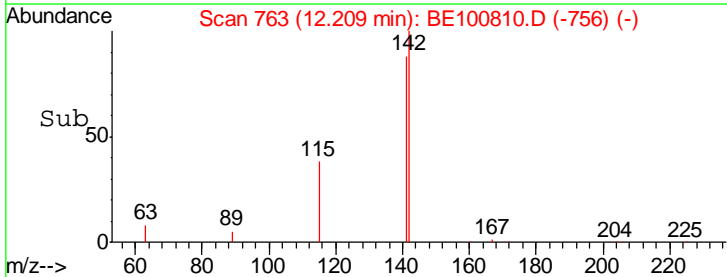
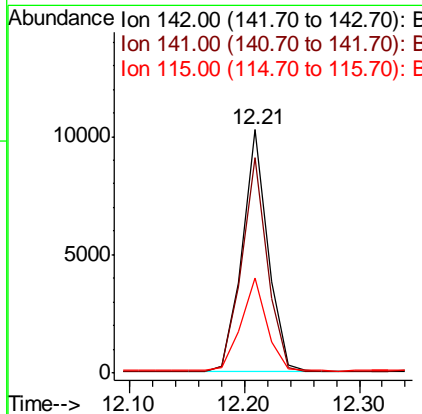
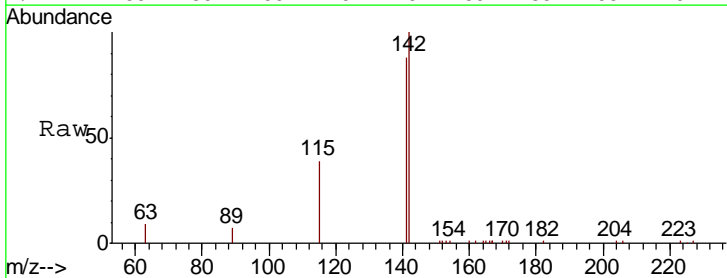
**Manual Integrations**  
**APPROVED**

mohammad  
 12/11/2019 2:29:43 PM

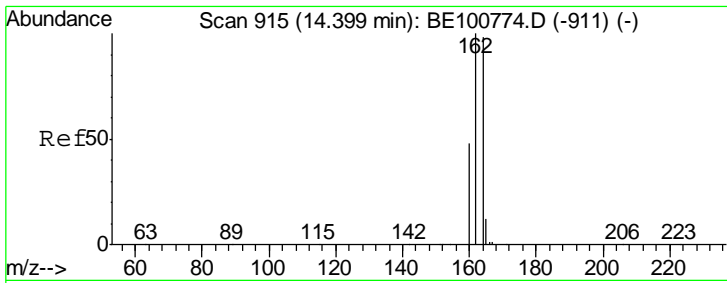


#12  
 2-Methylnaphthalene  
 Concen: 0.389 ng  
 RT: 12.21 min Scan# 763  
 Delta R.T. 0.00 min  
 Lab File: BE100810.D  
 Acq: 10 Dec 2019 14:35

Tgt Ion	Resp	Lower	Upper
142	15740		
141	88.5	72.6	108.8
115	39.0	31.8	47.6







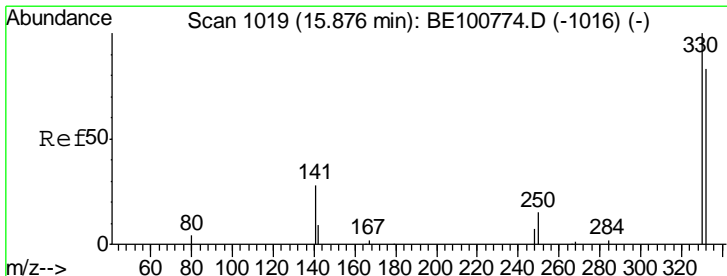
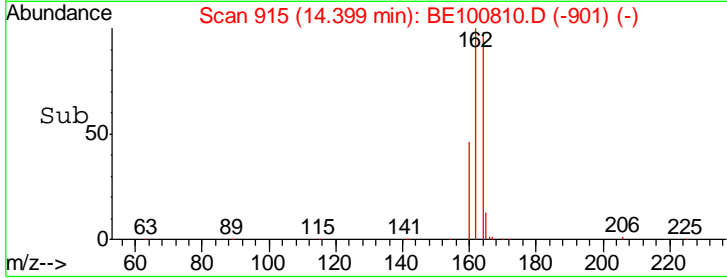
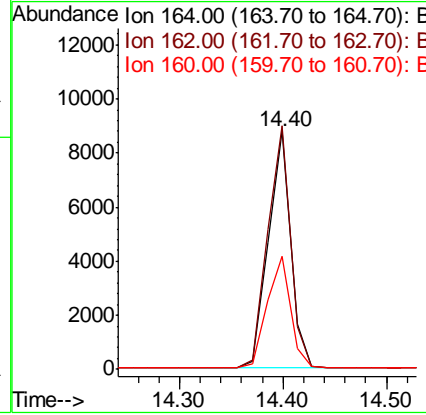
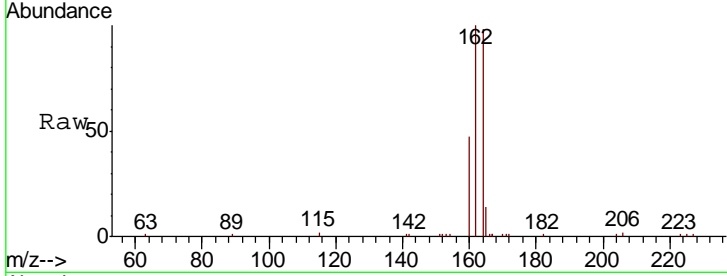
#13  
 Acenaphthene-d10  
 Concen: 0.400 ng  
 RT: 14.40 min Scan# 915  
 Delta R.T. 0.00 min  
 Lab File: BE100810.D  
 Acq: 10 Dec 2019 14:35

Instrument :  
 BNA\_E  
 ClientSampleId :  
 RE134D1-20191202MSD

Tgt Ion	Resp	Lower	Upper
164	100		
162	102.2	81.4	122.0
160	47.6	39.4	59.0

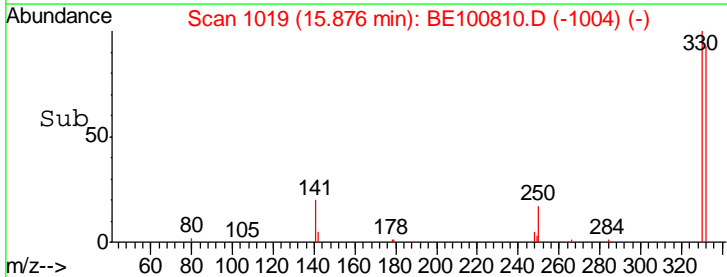
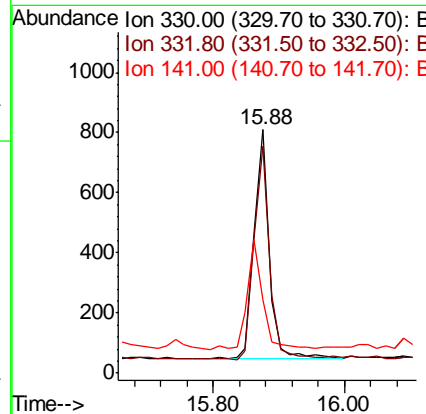
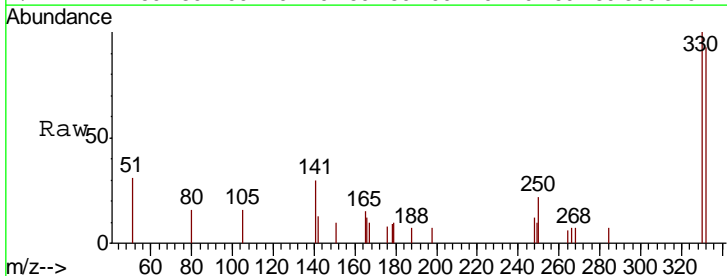
Manual Integrations  
 APPROVED

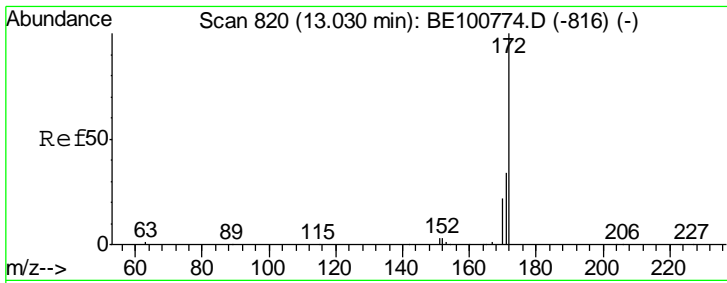
mohammad  
 12/11/2019 2:29:43 PM



#14  
 2,4,6-Tribromophenol  
 Concen: 0.824 ng  
 RT: 15.88 min Scan# 1019  
 Delta R.T. -0.00 min  
 Lab File: BE100810.D  
 Acq: 10 Dec 2019 14:35

Tgt Ion	Resp	Lower	Upper
330	100		
332	93.8	69.4	104.2
141	50.7	51.1	76.7#





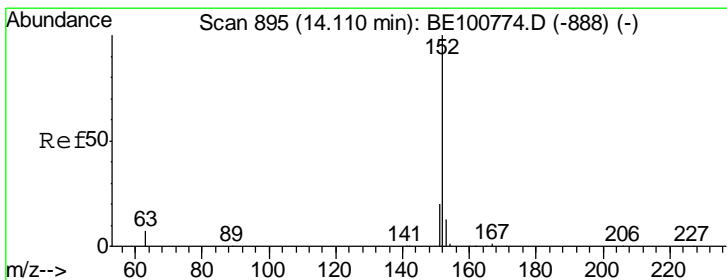
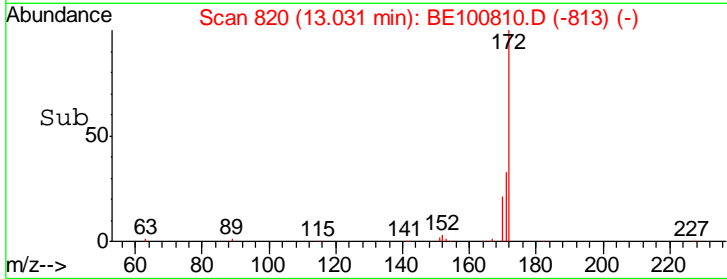
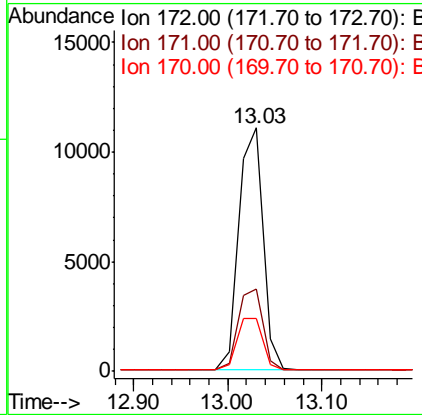
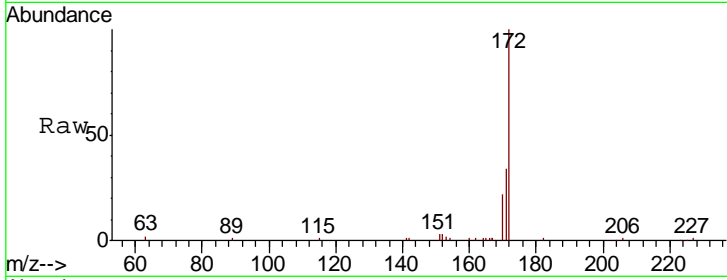
#15  
 2-Fluorobiphenyl  
 Concen: 0.379 ng  
 RT: 13.03 min Scan# 820  
 Delta R.T. 0.00 min  
 Lab File: BE100810.D  
 Acq: 10 Dec 2019 14:35

**Instrument :**  
 BNA\_E  
**ClientSampleId :**  
 RE134D1-20191202MSD

Tgt Ion	Resp	Lower	Upper
172	19978		
171	33.6	27.2	40.8
170	21.6	18.0	27.0

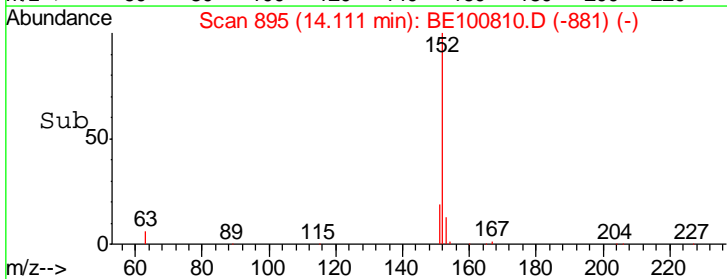
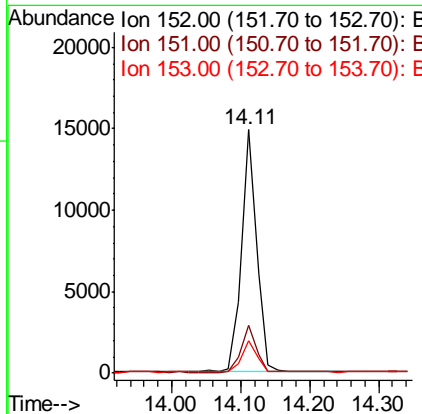
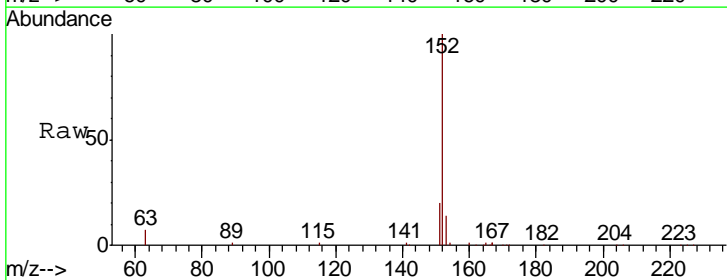
**Manual Integrations**  
**APPROVED**

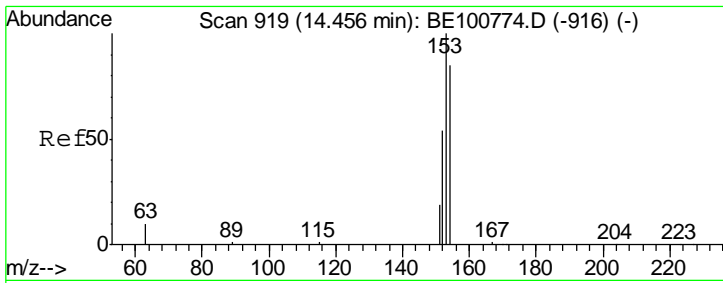
mohammad  
 12/11/2019 2:29:43 PM



#16  
 Acenaphthylene  
 Concen: 0.411 ng  
 RT: 14.11 min Scan# 895  
 Delta R.T. 0.00 min  
 Lab File: BE100810.D  
 Acq: 10 Dec 2019 14:35

Tgt Ion	Resp	Lower	Upper
152	22628		
151	19.3	15.8	23.6
153	13.5	10.4	15.6





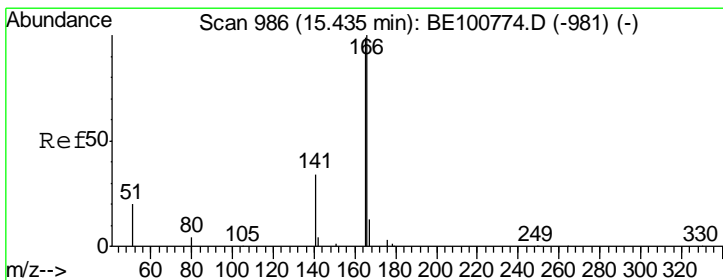
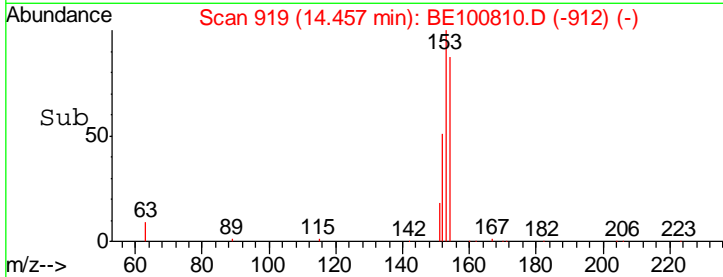
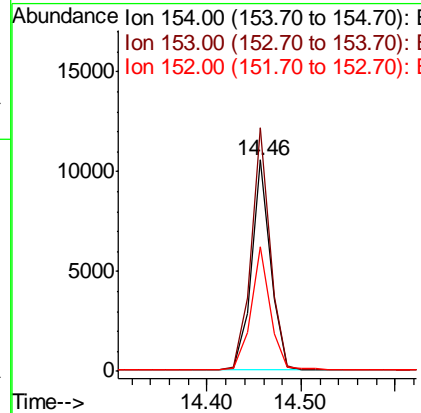
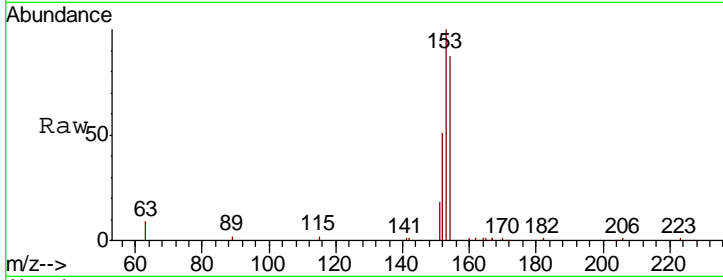
#17  
 Acenaphthene  
 Concen: 0.393 ng  
 RT: 14.46 min Scan# 919  
 Delta R.T. 0.00 min  
 Lab File: BE100810.D  
 Acq: 10 Dec 2019 14:35

Instrument :  
 BNA\_E  
 ClientSampleId :  
 RE134D1-20191202MSD

Tgt Ion	Resp	Lower	Upper
154	100		
153	114.9	92.2	138.2
152	59.1	49.1	73.7

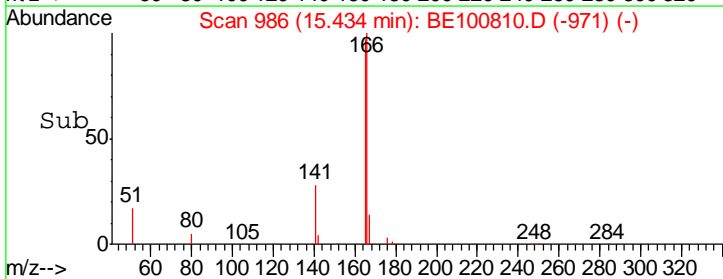
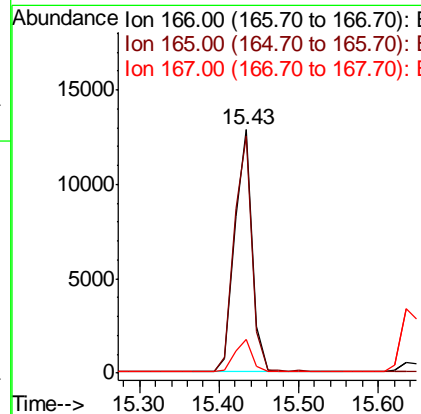
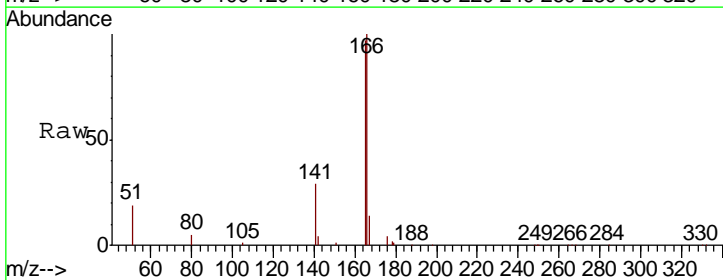
Manual Integrations  
 APPROVED

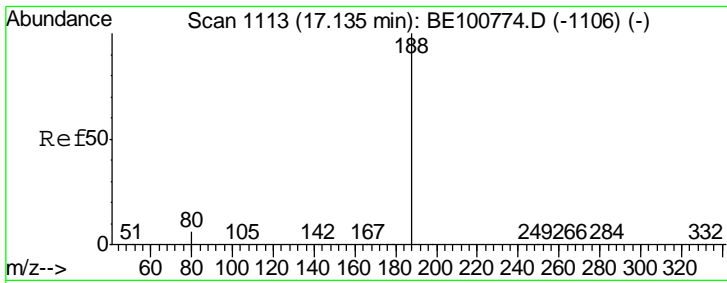
mohammad  
 12/11/2019 2:29:43 PM



#18  
 Fluorene  
 Concen: 0.400 ng  
 RT: 15.43 min Scan# 986  
 Delta R.T. -0.00 min  
 Lab File: BE100810.D  
 Acq: 10 Dec 2019 14:35

Tgt Ion	Resp	Lower	Upper
166	100		
165	99.4	80.5	120.7
167	13.6	10.7	16.1





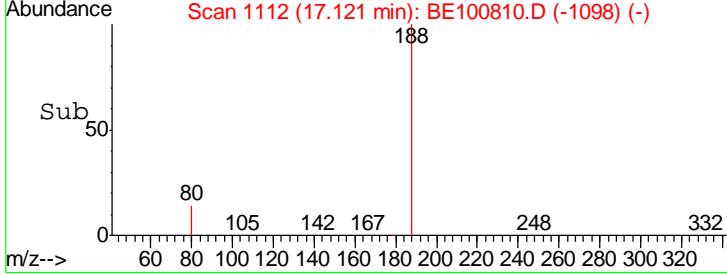
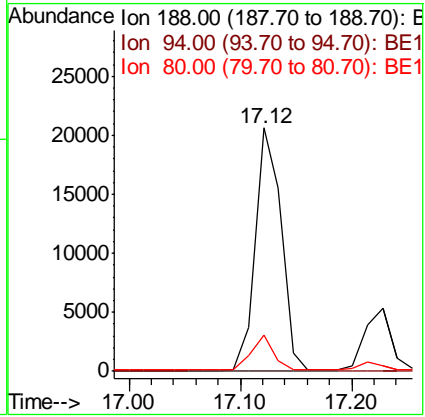
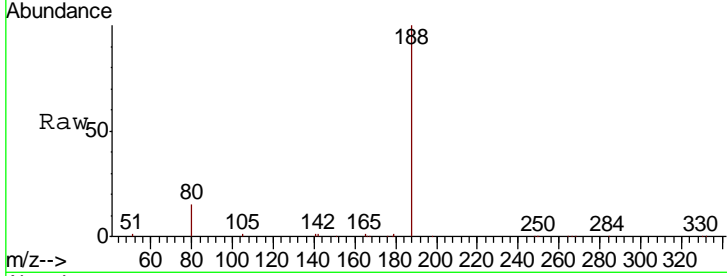
#19  
 Phenanthrene-d10  
 Concen: 0.400 ng  
 RT: 17.12 min Scan# 1112  
 Delta R.T. -0.01 min  
 Lab File: BE100810.D  
 Acq: 10 Dec 2019 14:35

Instrument :  
 BNA\_E  
 ClientSampleId :  
 RE134D1-20191202MSD

Tgt Ion	Ratio	Lower	Upper
188	100		
94	0.0	0.0	0.0
80	14.6	5.2	7.8#

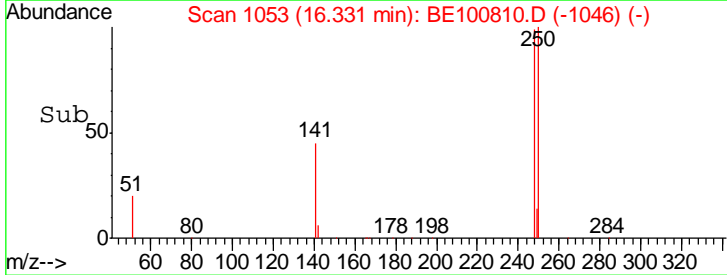
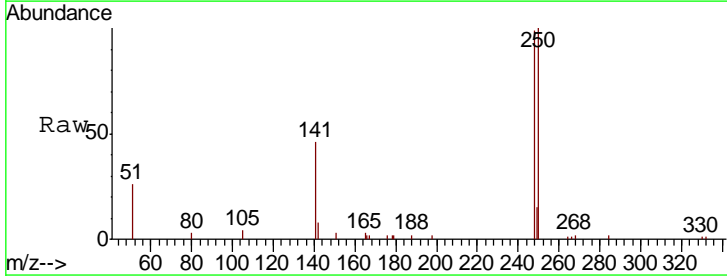
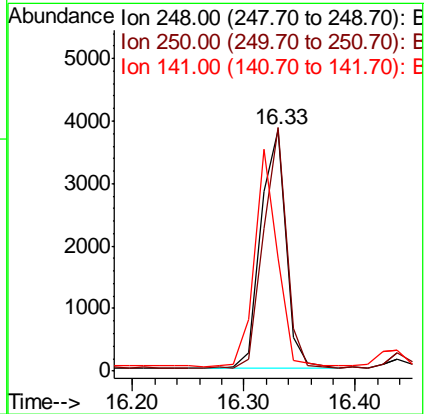
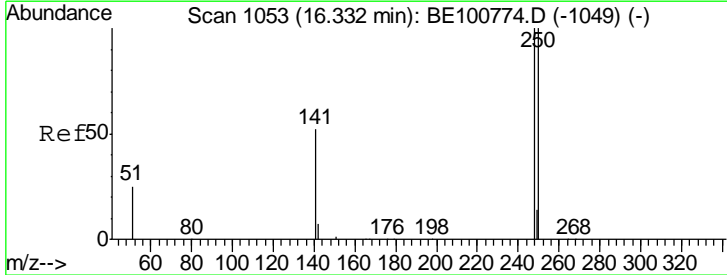
Manual Integrations  
 APPROVED

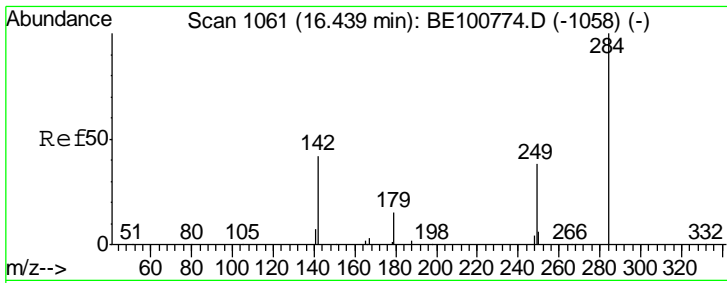
mohammad  
 12/11/2019 2:29:43 PM



#20  
 4-Bromophenyl-phenylether  
 Concen: 0.368 ng  
 RT: 16.33 min Scan# 1053  
 Delta R.T. -0.00 min  
 Lab File: BE100810.D  
 Acq: 10 Dec 2019 14:35

Tgt Ion	Ratio	Lower	Upper
248	100		
250	100.9	80.5	120.7
141	46.6	42.6	64.0





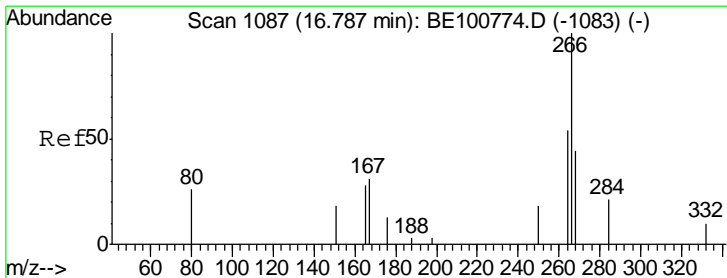
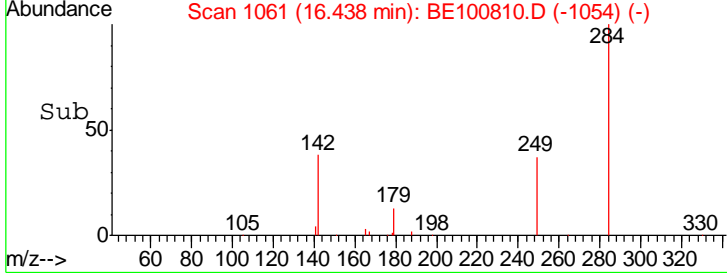
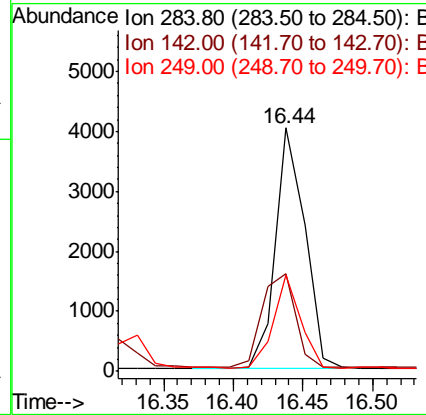
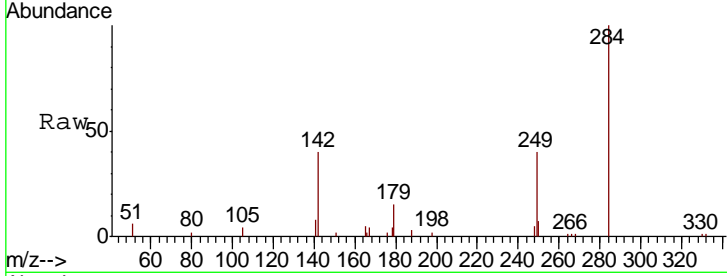
#21  
 Hexachlorobenzene  
 Concen: 0.332 ng  
 RT: 16.44 min Scan# 1061  
 Delta R.T. -0.00 min  
 Lab File: BE100810.D  
 Acq: 10 Dec 2019 14:35

Instrument :  
 BNA\_E  
 ClientSampleId :  
 RE134D1-20191202MSD

Tgt Ion	Resp	Lower	Upper
284	5908		
284	100		
142	44.2	34.4	51.6
249	35.5	28.5	42.7

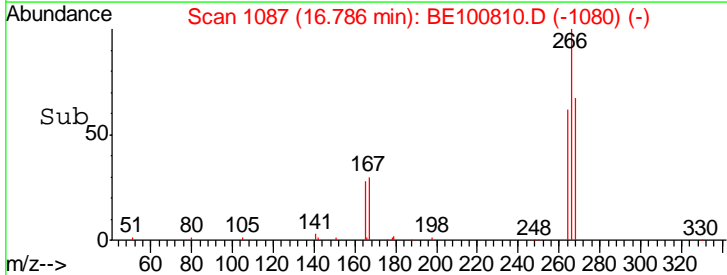
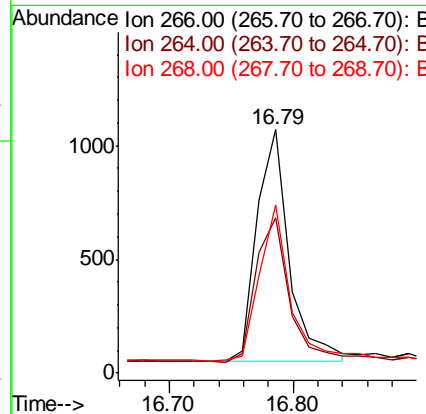
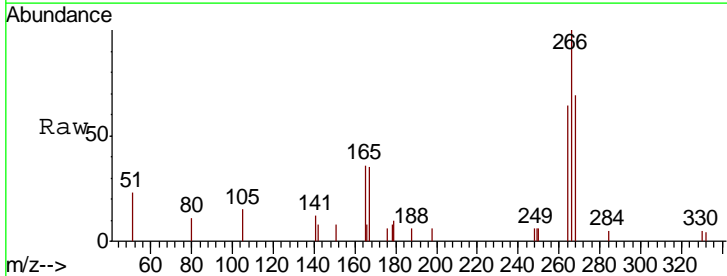
Manual Integrations  
 APPROVED

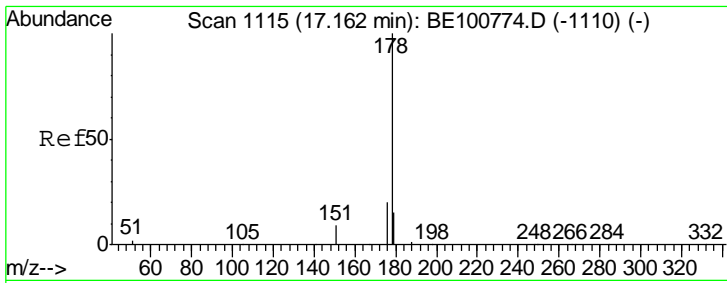
mohammad  
 12/11/2019 2:29:43 PM



#22  
 Pentachlorophenol  
 Concen: 1.482 ng  
 RT: 16.79 min Scan# 1087  
 Delta R.T. -0.00 min  
 Lab File: BE100810.D  
 Acq: 10 Dec 2019 14:35

Tgt Ion	Resp	Lower	Upper
266	1823		
266	100		
264	63.8	63.4	95.0
268	68.9	65.8	98.8



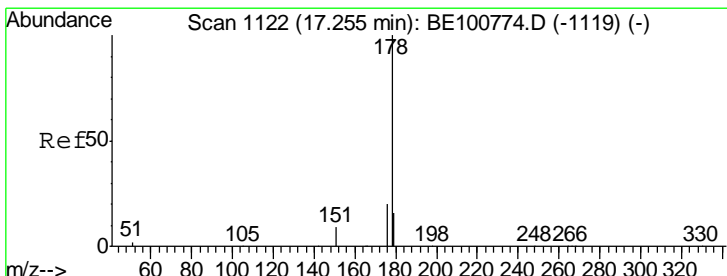
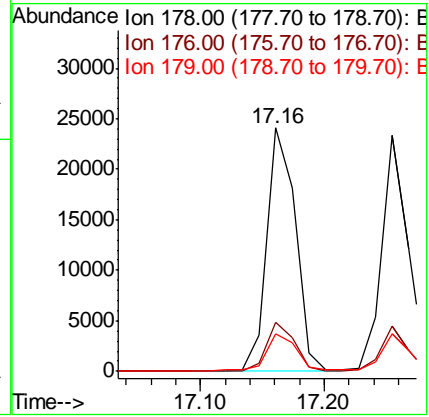
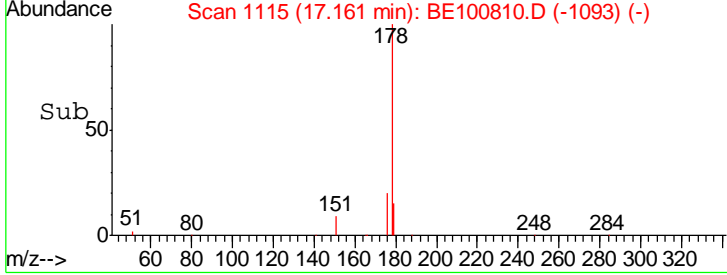
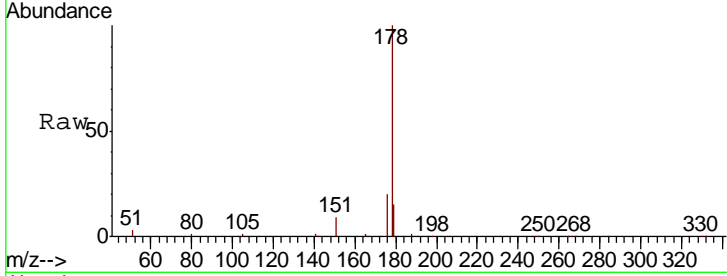


#23  
 Phenanthrene  
 Concen: 0.379 ng  
 RT: 17.16 min Scan# 1115  
 Delta R.T. -0.00 min  
 Lab File: BE100810.D  
 Acq: 10 Dec 2019 14:35

Instrument :  
 BNA\_E  
 ClientSampleId :  
 RE134D1-20191202MSD

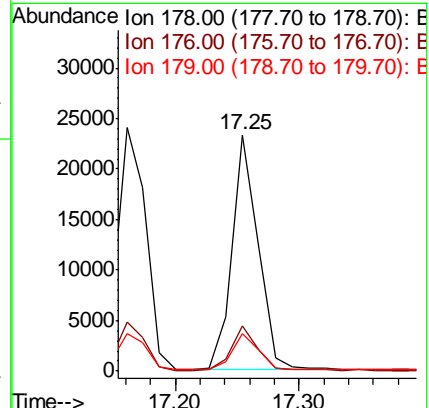
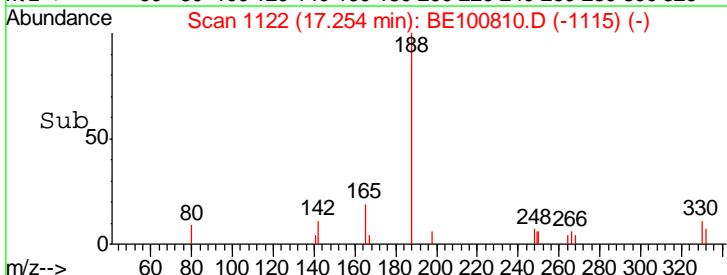
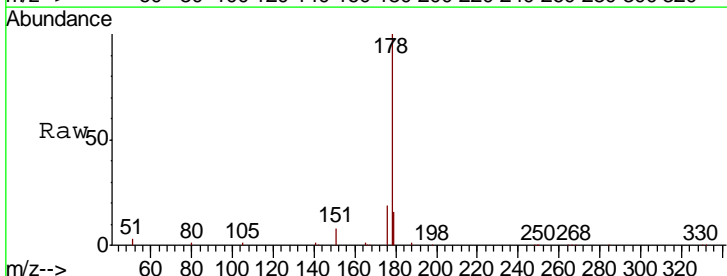
Tgt Ion	Resp	Lower	Upper
178	38306		
176	19.2	15.5	23.3
179	15.4	12.3	18.5

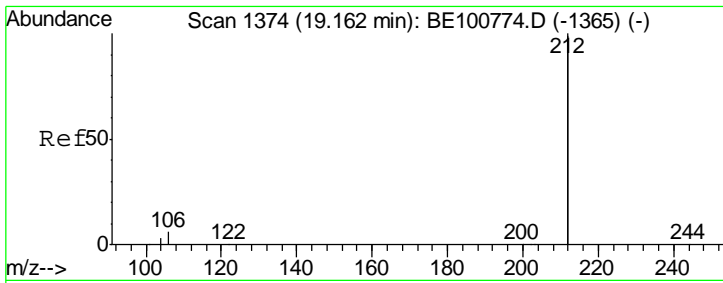
Manual Integrations  
**APPROVED**  
 mohammad  
 12/11/2019 2:29:43 PM



#24  
 Anthracene  
 Concen: 0.401 ng  
 RT: 17.25 min Scan# 1122  
 Delta R.T. -0.00 min  
 Lab File: BE100810.D  
 Acq: 10 Dec 2019 14:35

Tgt Ion	Resp	Lower	Upper
178	33894		
176	18.7	15.4	23.2
179	15.8	12.7	19.1





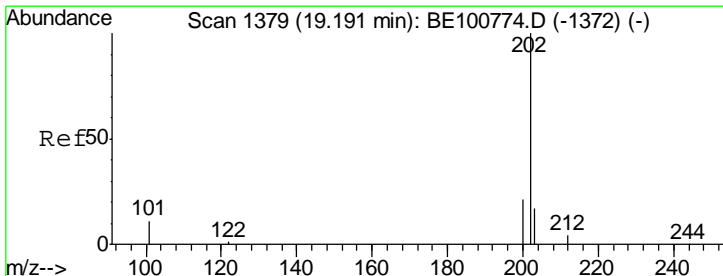
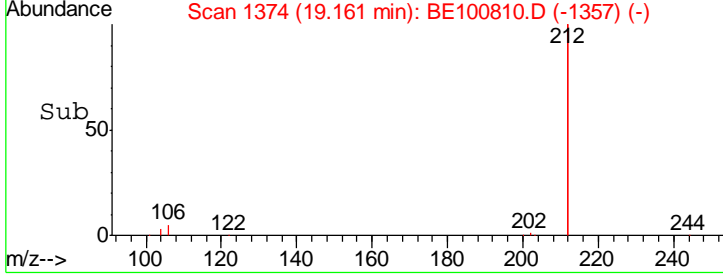
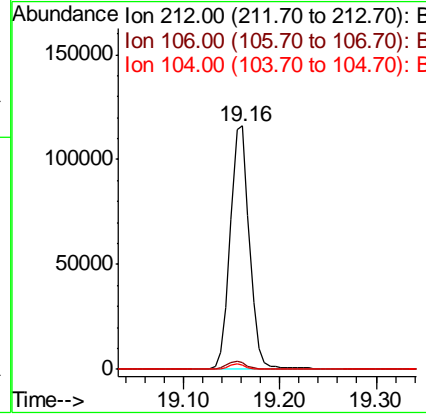
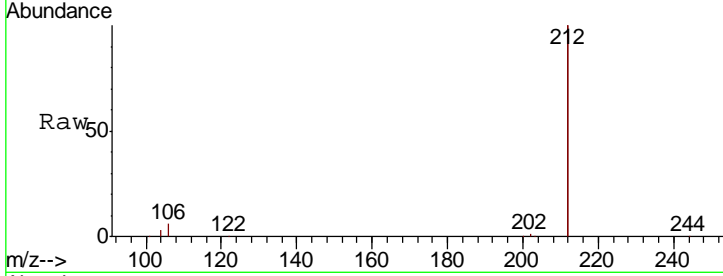
#25  
 Fluoranthene-d10  
 Concen: 0.404 ng  
 RT: 19.16 min Scan# 1374  
 Delta R.T. -0.00 min  
 Lab File: BE100810.D  
 Acq: 10 Dec 2019 14:35

**Instrument :**  
 BNA\_E  
**ClientSampleId :**  
 RE134D1-20191202MSD

Tgt Ion	Resp	Lower	Upper
212	159470		
106	3.3	2.6	3.8
104	1.9	1.4	2.2

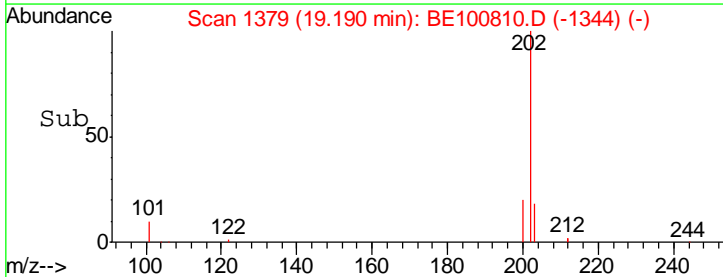
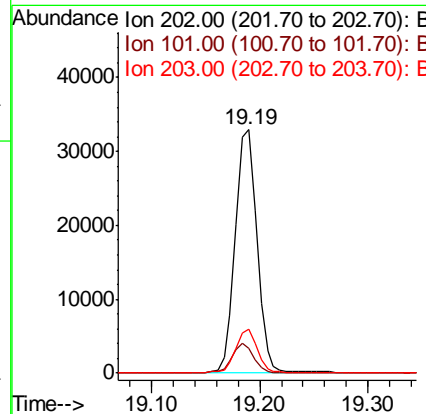
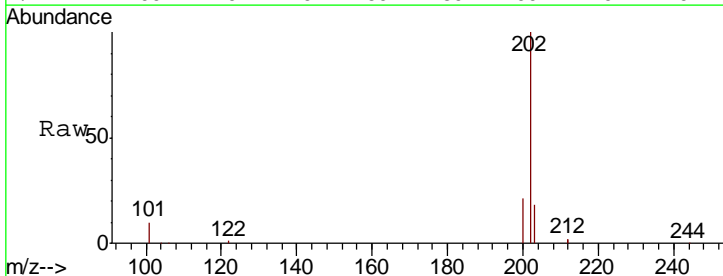
**Manual Integrations**  
**APPROVED**

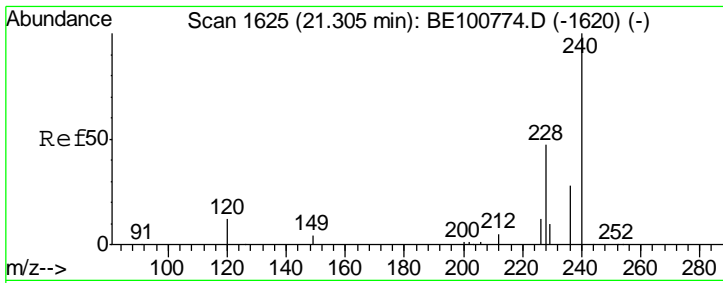
mohammad  
 12/11/2019 2:29:43 PM



#26  
 Fluoranthene  
 Concen: 0.373 ng  
 RT: 19.19 min Scan# 1379  
 Delta R.T. -0.00 min  
 Lab File: BE100810.D  
 Acq: 10 Dec 2019 14:35

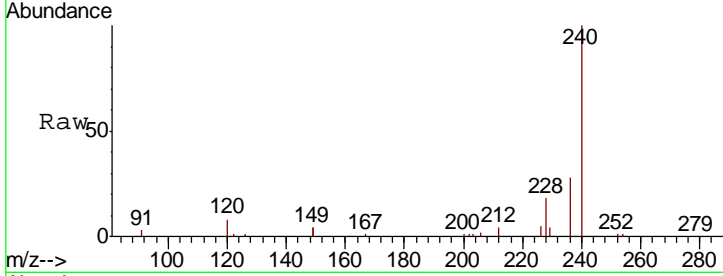
Tgt Ion	Resp	Lower	Upper
202	45029		
101	11.7	9.1	13.7
203	17.2	13.8	20.6





#27  
 Chrysene-d12  
 Concen: 0.400 ng  
 RT: 21.31 min Scan# 1625  
 Delta R.T. 0.00 min  
 Lab File: BE100810.D  
 Acq: 10 Dec 2019 14:35

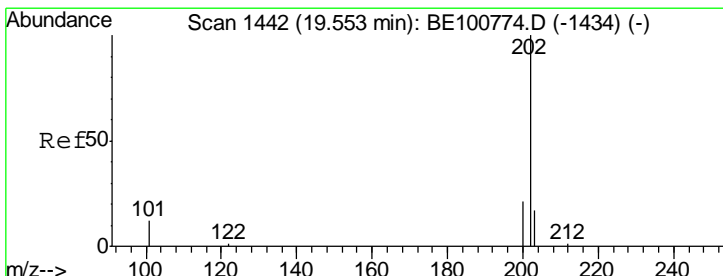
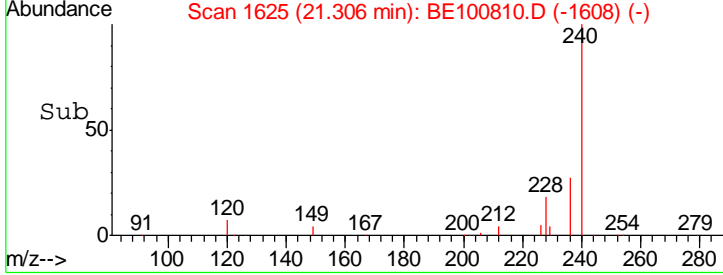
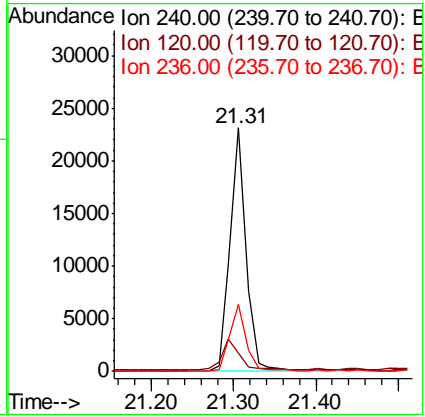
**Instrument :**  
 BNA\_E  
**ClientSampled :**  
 RE134D1-20191202MSD



Tgt Ion: 240 Resp: 30932

Ion	Ratio	Lower	Upper
240	100		
120	7.7	10.2	15.2#
236	27.7	22.3	33.5

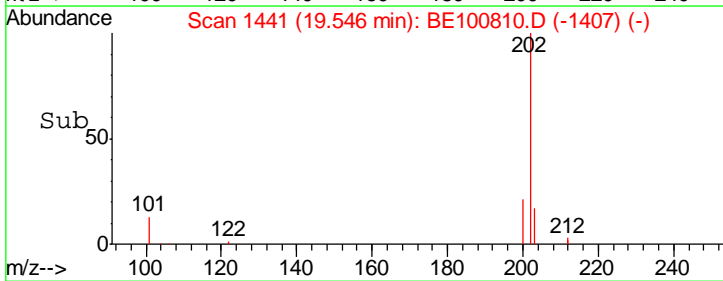
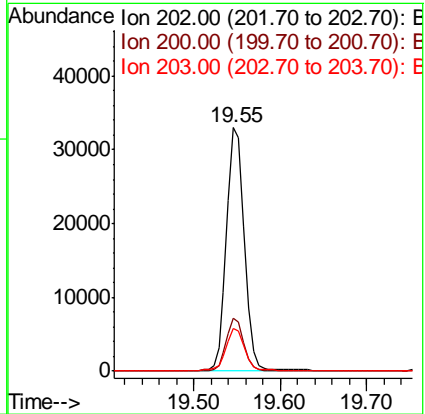
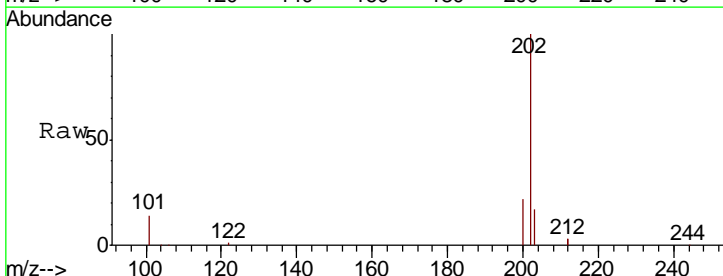
**Manual Integrations**  
**APPROVED**  
 mohammad  
 12/11/2019 2:29:43 PM



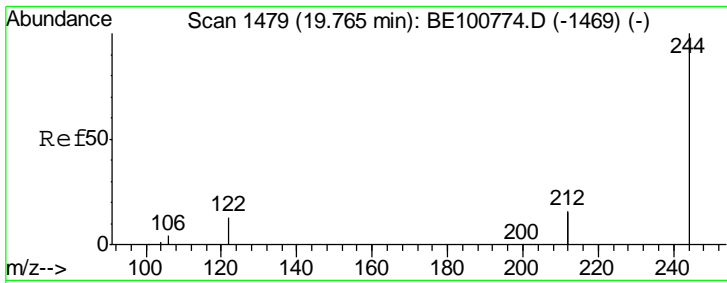
#28  
 Pyrene  
 Concen: 0.463 ng  
 RT: 19.55 min Scan# 1441  
 Delta R.T. -0.01 min  
 Lab File: BE100810.D  
 Acq: 10 Dec 2019 14:35

Tgt Ion: 202 Resp: 46497

Ion	Ratio	Lower	Upper
202	100		
200	21.1	17.0	25.4
203	17.8	13.9	20.9





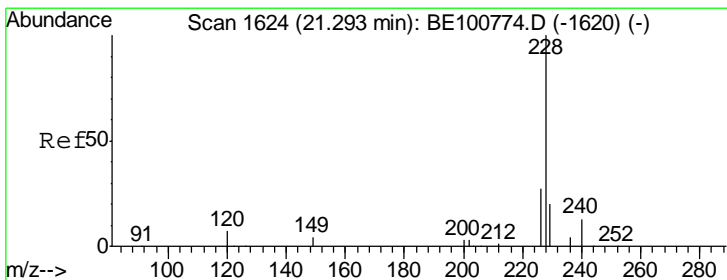
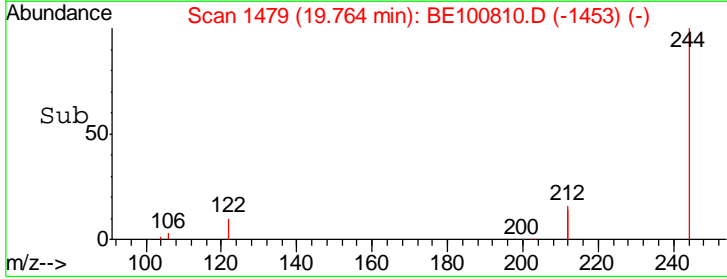
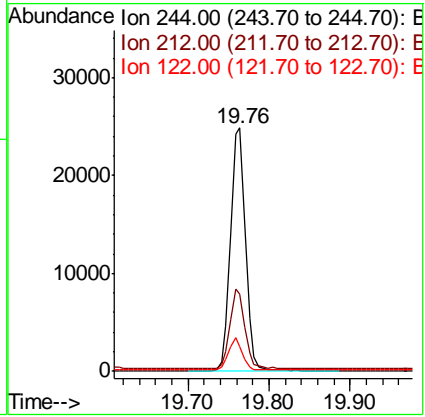
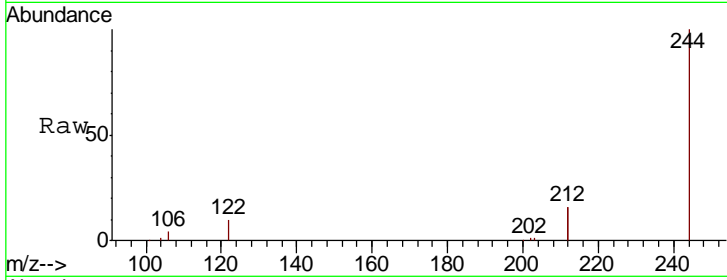


#29  
 Terphenyl-d14  
 Concen: 0.426 ng  
 RT: 19.76 min Scan# 1479  
 Delta R.T. -0.00 min  
 Lab File: BE100810.D  
 Acq: 10 Dec 2019 14:35

**Instrument :**  
 BNA\_E  
**ClientSampled :**  
 RE134D1-20191202MSD

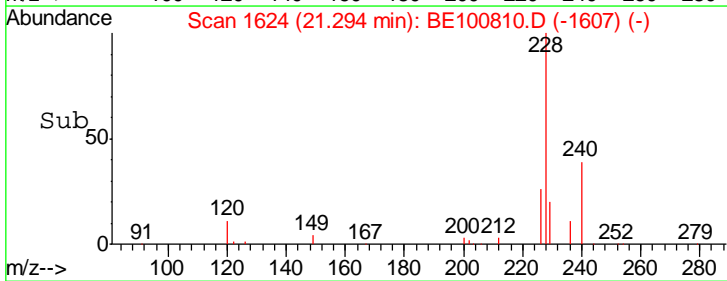
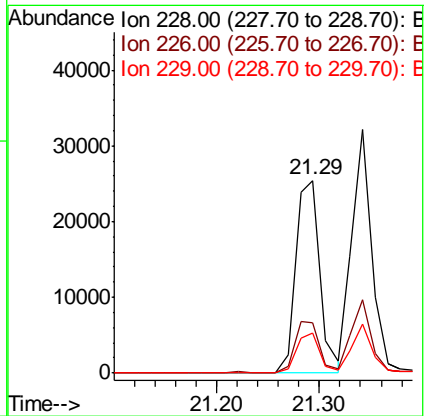
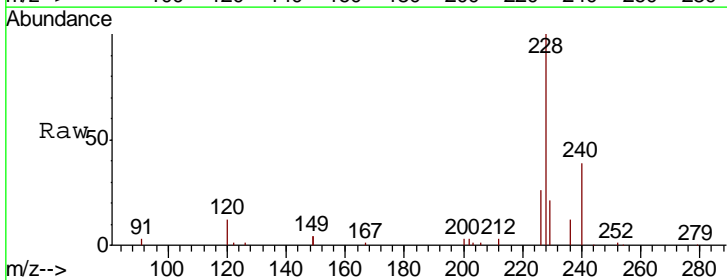
Tgt Ion	Resp	Lower	Upper
244	31557		
212	31.8	26.2	39.4
122	10.1	10.2	15.4#

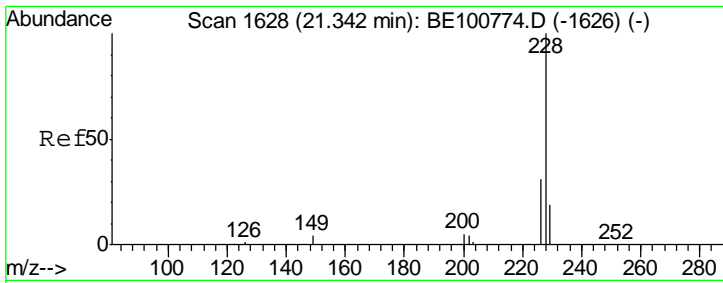
**Manual Integrations**  
**APPROVED**  
 mohammad  
 12/11/2019 2:29:43 PM



#30  
 Benzo(a)anthracene  
 Concen: 0.458 ng  
 RT: 21.29 min Scan# 1624  
 Delta R.T. 0.00 min  
 Lab File: BE100810.D  
 Acq: 10 Dec 2019 14:35

Tgt Ion	Resp	Lower	Upper
228	41745		
226	25.9	21.5	32.3
229	20.6	16.0	24.0





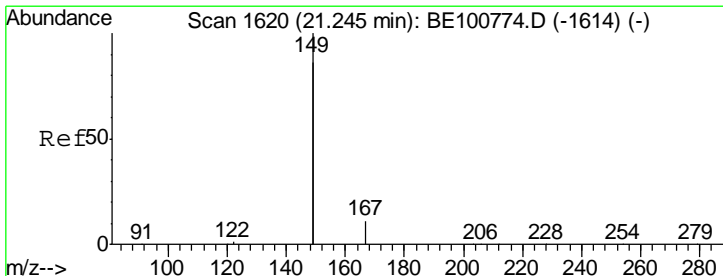
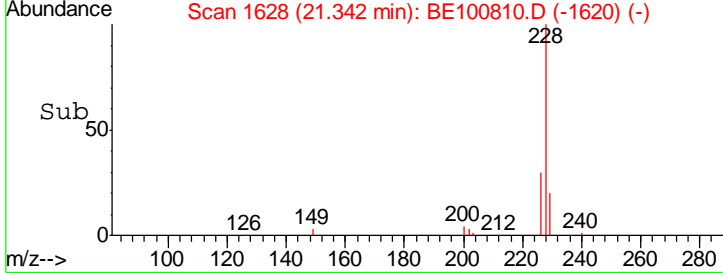
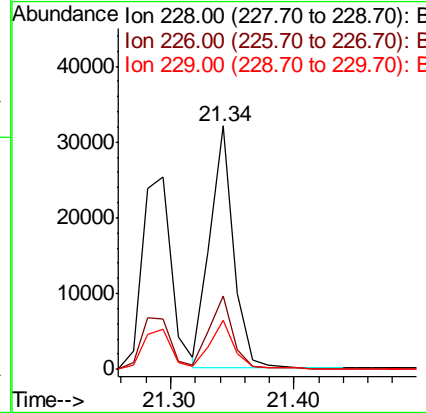
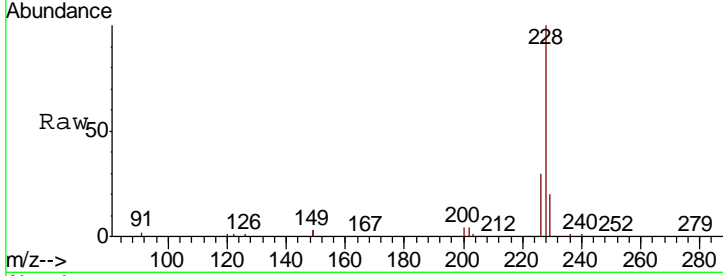
#31  
 Chrysene  
 Concen: 0.396 ng  
 RT: 21.34 min Scan# 1628  
 Delta R.T. 0.00 min  
 Lab File: BE100810.D  
 Acq: 10 Dec 2019 14:35

Instrument :  
 BNA\_E  
 ClientSampled :  
 RE134D1-20191202MSD

Tgt Ion	Resp	Lower	Upper
228	100		
226	29.9	25.0	37.4
229	19.9	15.4	23.2

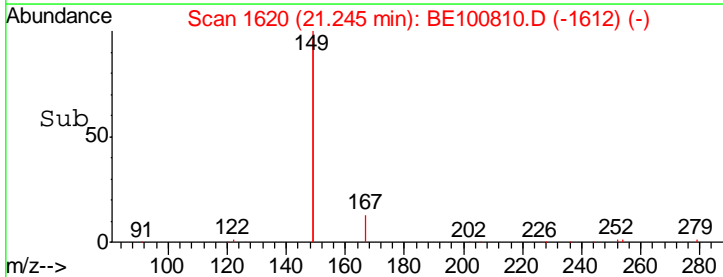
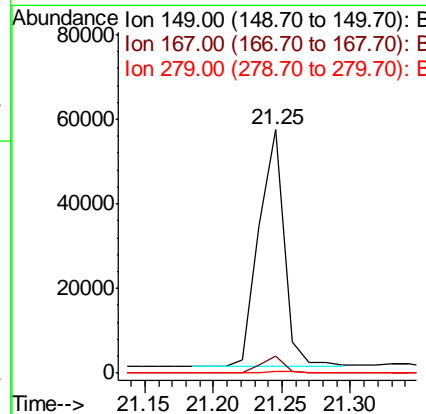
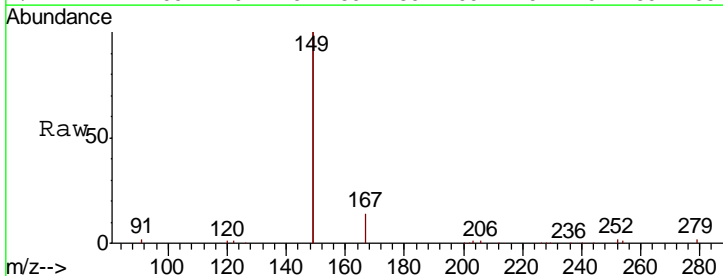
Manual Integrations  
 APPROVED

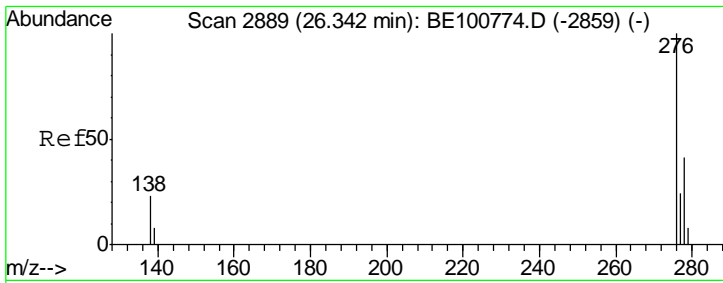
mohammad  
 12/11/2019 2:29:43 PM



#32  
 Bis(2-ethylhexyl)phthalate  
 Concen: 1.024 ng  
 RT: 21.25 min Scan# 1620  
 Delta R.T. 0.00 min  
 Lab File: BE100810.D  
 Acq: 10 Dec 2019 14:35

Tgt Ion	Resp	Lower	Upper
149	100		
167	6.3	5.0	7.6
279	0.8	0.7	1.1



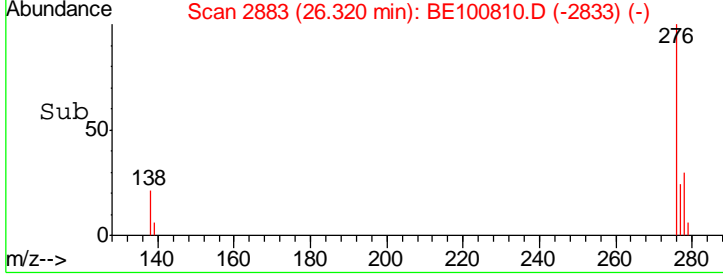
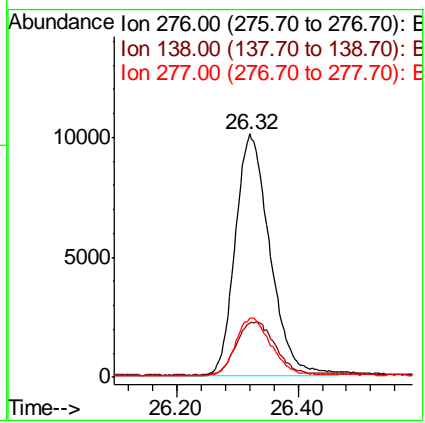
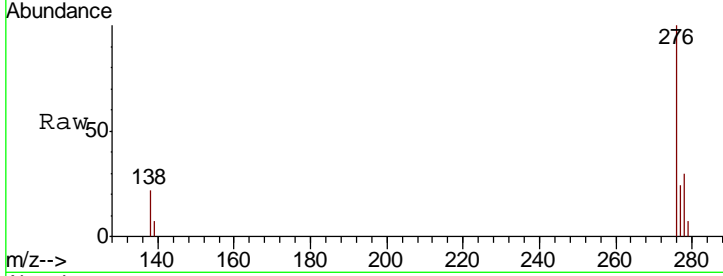


#33  
 Indeno(1,2,3-cd)pyrene  
 Concen: 0.429 ng  
 RT: 26.32 min Scan# 2883  
 Delta R.T. -0.02 min  
 Lab File: BE100810.D  
 Acq: 10 Dec 2019 14:35

**Instrument :**  
 BNA\_E  
**ClientSampleId :**  
 RE134D1-20191202MSD

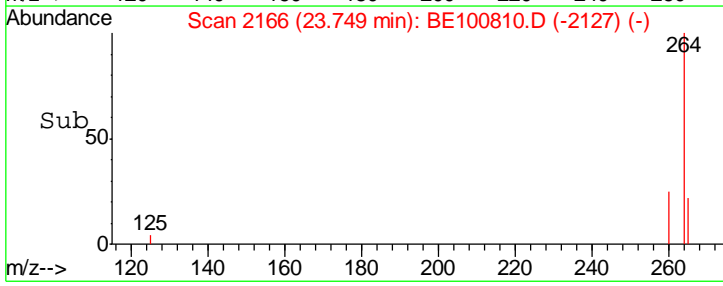
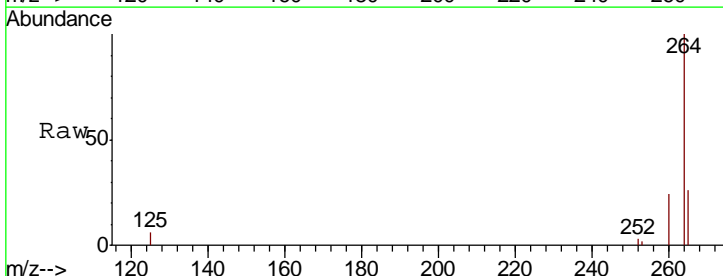
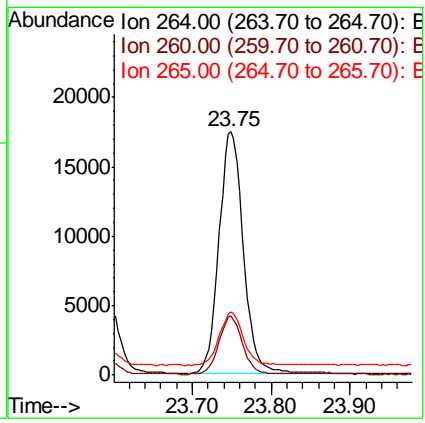
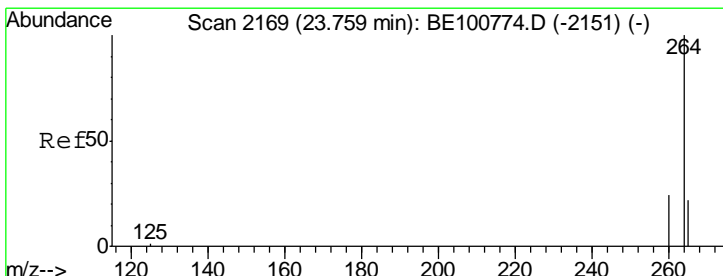
Tgt Ion	Resp	Lower	Upper
276	40039		
276	100		
138	24.8	19.4	29.0
277	24.3	19.8	29.6

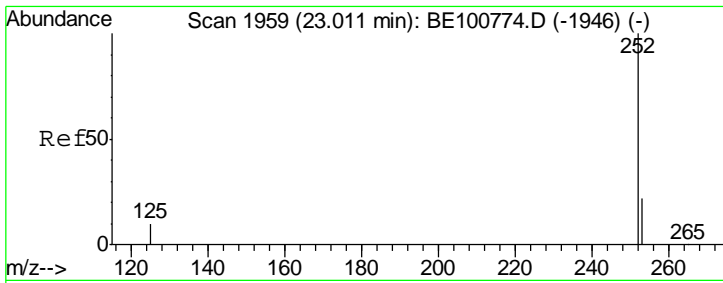
**Manual Integrations**  
**APPROVED**  
 mohammad  
 12/11/2019 2:29:43 PM



#34  
 Perylene-d12  
 Concen: 0.400 ng  
 RT: 23.75 min Scan# 2166  
 Delta R.T. -0.01 min  
 Lab File: BE100810.D  
 Acq: 10 Dec 2019 14:35

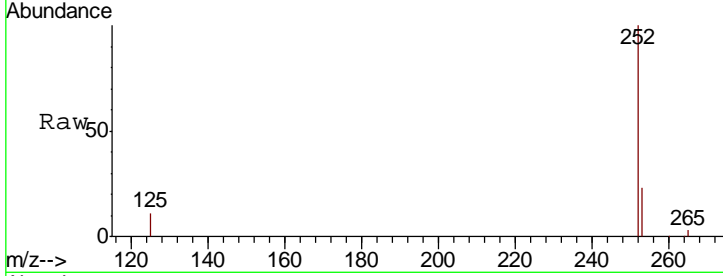
Tgt Ion	Resp	Lower	Upper
264	37088		
264	100		
260	24.3	19.4	29.2
265	25.8	21.8	32.8





#35  
 Benzo(b)fluoranthene  
 Concen: 0.402 ng  
 RT: 23.00 min Scan# 1957  
 Delta R.T. -0.01 min  
 Lab File: BE100810.D  
 Acq: 10 Dec 2019 14:35

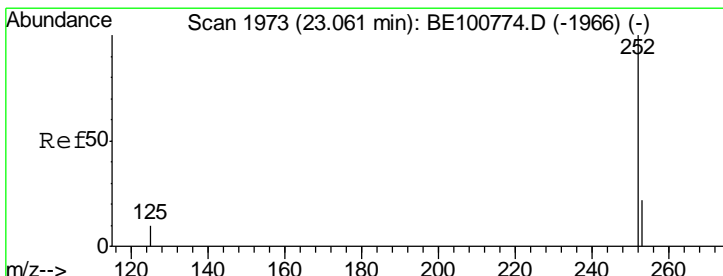
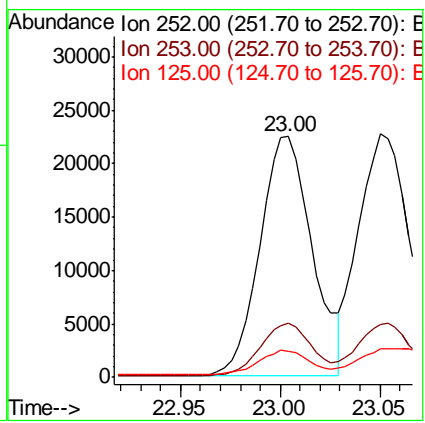
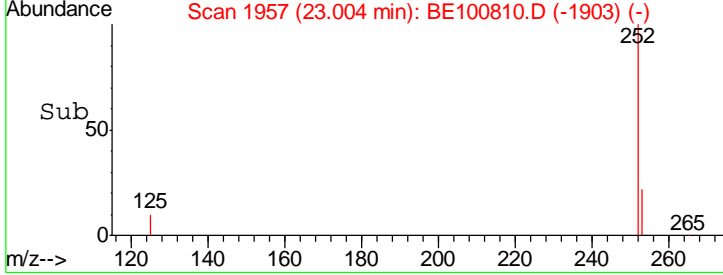
Instrument :  
 BNA\_E  
 ClientSampleId :  
 RE134D1-20191202MSD



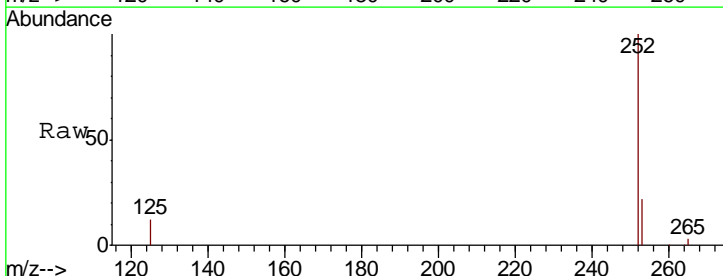
Tgt Ion: 252 Resp: 40795

Ion	Ratio	Lower	Upper
252	100		
253	22.5	17.8	26.8
125	10.8	9.0	13.4

Manual Integrations  
 APPROVED  
 mohammad  
 12/11/2019 2:29:43 PM

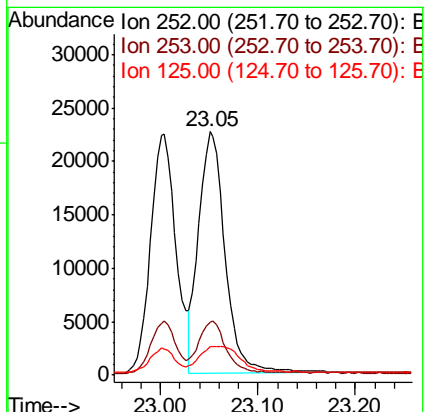
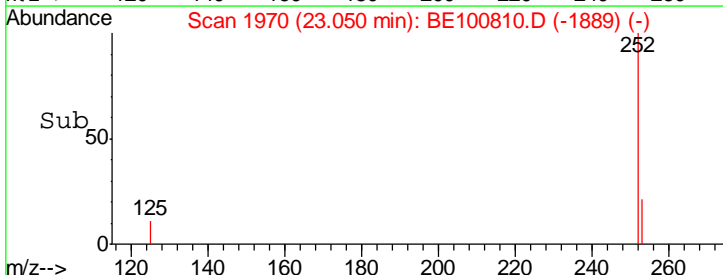


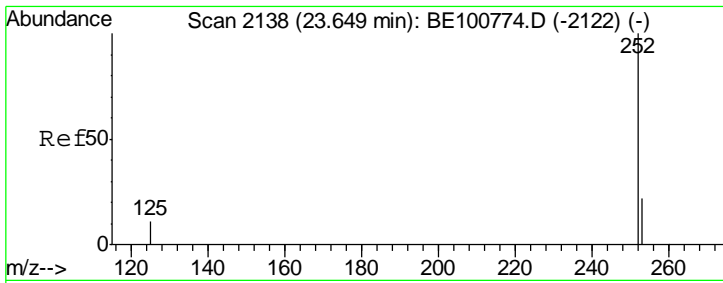
#36  
 Benzo(k)fluoranthene  
 Concen: 0.372 ng  
 RT: 23.05 min Scan# 1970  
 Delta R.T. -0.01 min  
 Lab File: BE100810.D  
 Acq: 10 Dec 2019 14:35



Tgt Ion: 252 Resp: 42305

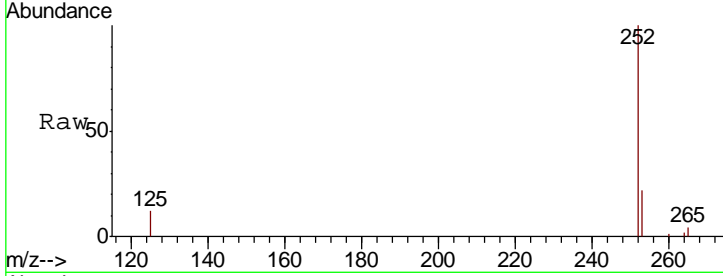
Ion	Ratio	Lower	Upper
252	100		
253	21.7	17.8	26.8
125	11.7	8.7	13.1





#37  
 Benzo(a)pyrene  
 Concen: 0.408 ng  
 RT: 23.64 min Scan# 2135  
 Delta R.T. -0.01 min  
 Lab File: BE100810.D  
 Acq: 10 Dec 2019 14:35

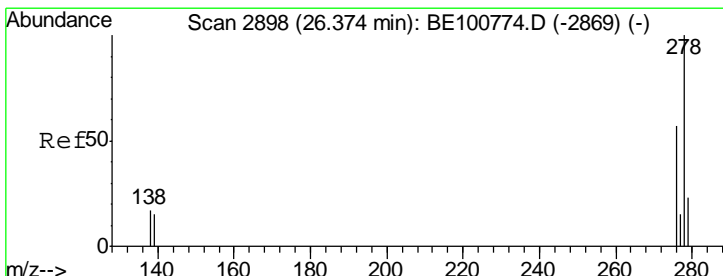
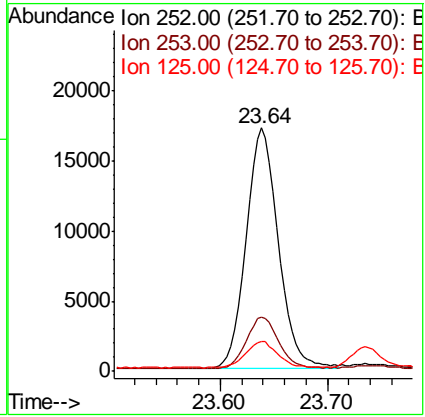
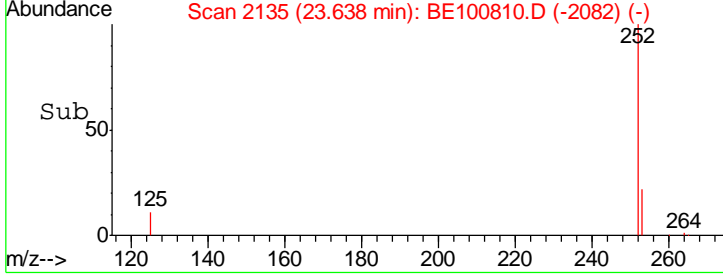
**Instrument :**  
 BNA\_E  
**ClientSampled :**  
 RE134D1-20191202MSD



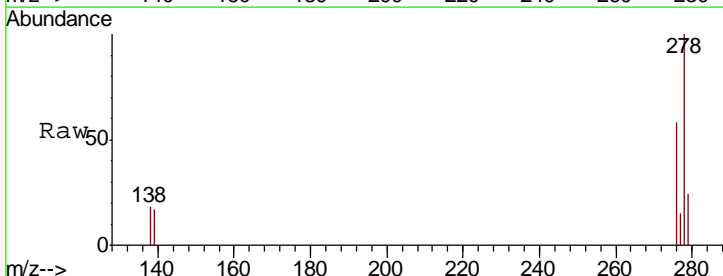
Tgt Ion: 252 Resp: 35869

Ion	Ratio	Lower	Upper
252	100		
253	22.4	18.2	27.4
125	12.3	10.4	15.6

**Manual Integrations**  
**APPROVED**  
 mohammad  
 12/11/2019 2:29:43 PM

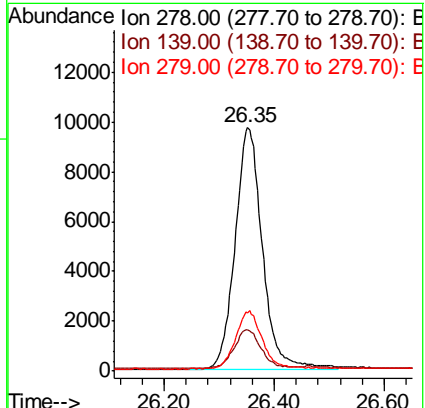
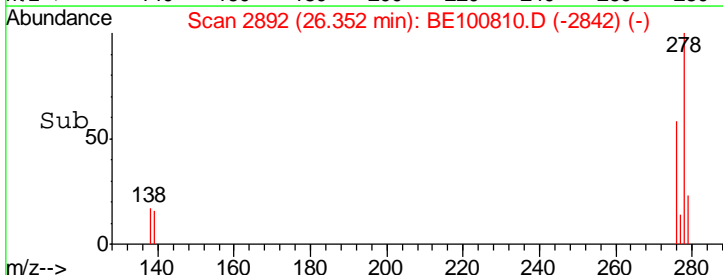


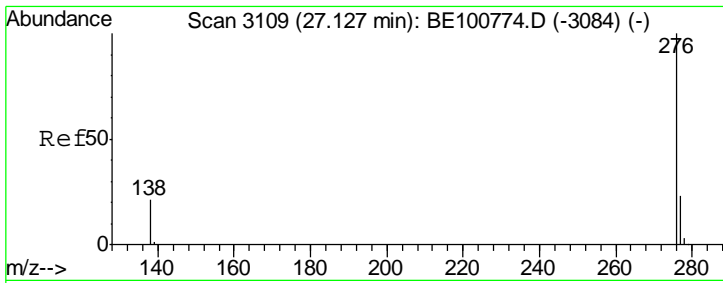
#38  
 Dibenzo(a,h)anthracene  
 Concen: 0.386 ng  
 RT: 26.35 min Scan# 2892  
 Delta R.T. -0.02 min  
 Lab File: BE100810.D  
 Acq: 10 Dec 2019 14:35



Tgt Ion: 278 Resp: 33718

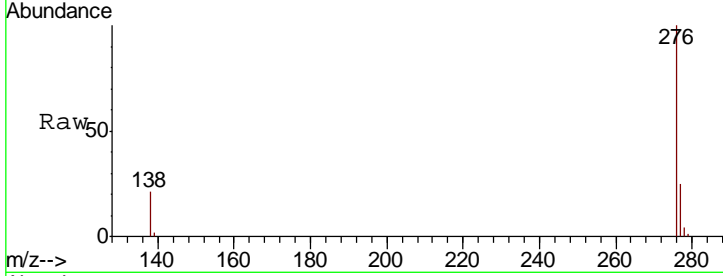
Ion	Ratio	Lower	Upper
278	100		
139	17.1	13.0	19.4
279	24.0	19.6	29.4





#39  
 Benzo(a,h,i)perylene  
 Concen: 0.311 ng  
 RT: 27.11 min Scan# 3104  
 Delta R.T. -0.02 min  
 Lab File: BE100810.D  
 Acq: 10 Dec 2019 14:35

**Instrument :**  
 BNA\_E  
**ClientSampled :**  
 RE134D1-20191202MSD



Tot Ion: 276 Resp: 29118

Ion	Ratio	Lower	Upper
276	100		
277	24.7	19.3	28.9
138	21.4	17.8	26.6

**Manual Integrations**  
**APPROVED**  
 mohammad  
 12/11/2019 2:29:43 PM

