

Data Path : \\74.0.250.170\SVOASRV\HPCHEM1\BNA E\DATA\BE121117\  
 Data File : BE094971.D  
 Acq On : 11 Dec 2017 12:30  
 Operator : SJ/JU  
 Sample : SSTDCCC0.4  
 Misc :  
 ALS Vial : 2 Sample Multiplier: 1

Instrument :  
 BNA\_E  
 ClientSampleId :  
 SSTDCCC0.4

Quant Time: Dec 11 15:38:17 2017  
 Quant Method : Z:\HPCHEM1\BNA E\METHODS\8270-SIM-BE113017.M  
 Quant Title : ASP BNA STANDARDS FOR 5 POINT CALIBRATION  
 QLast Update : Fri Dec 01 13:33:28 2017  
 Response via : Initial Calibration

Internal Standards	R.T.	QIon	Response	Conc	Units	Dev(Min)
1) 1,4-Dichlorobenzene-d4	8.48	152	7677	0.40	ng	0.00
7) Naphthalene-d8	11.33	136	16502	0.40	ng	0.00
13) Acenaphthene-d10	15.08	164	9316	0.40	ng	0.00
19) Phenanthrene-d10	17.79	188	22709	0.40	ng	0.01
27) Chrysene-d12	21.88	240	25141	0.40	ng	0.00
34) Perylene-d12	24.57	264	19492	0.40	ng	0.00

## System Monitoring Compounds

4) 2-Fluorophenol	5.95	112	4430	0.36	ng	0.00
5) Phenol-d6	7.60	99	6550	0.36	ng	0.01
8) Nitrobenzene-d5	9.67	82	4780	0.49	ng	0.00
11) 2-Methylnaphthalene-d10	12.87	152	10405	0.40	ng	0.00
14) 2,4,6-Tribromophenol	16.55	330	804	0.42	ng	0.02
15) 2-Fluorobiphenyl	13.71	172	16060	0.40	ng	0.00
25) Fluoranthene-d10	19.76	212	115547	0.37	ng	0.00
29) Terphenyl-d14	20.33	244	18801	0.40	ng	0.00

## Target Compounds

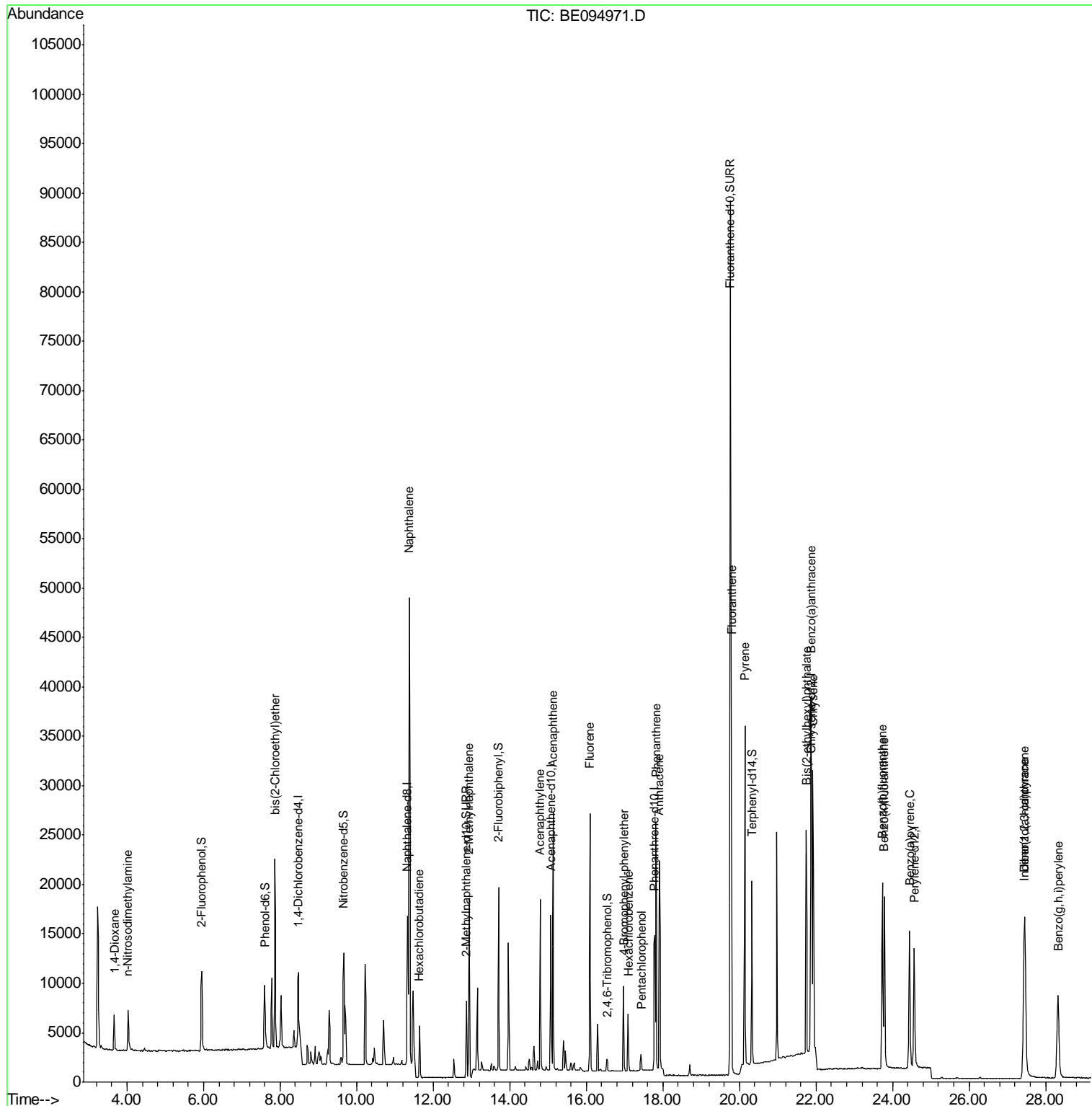
Target Compounds	R.T.	QIon	Response	Conc	Units	Qvalue
2) 1,4-Dioxane	3.67	88	2961	0.369	ng	# 90
3) n-Nitrosodimethylamine	4.01	42	3793	0.371	ng	# 79
6) bis(2-Chloroethyl)ether	7.87	93	6538	0.366	ng	98
9) Naphthalene	11.38	128	76162	0.394	ng	99
10) Hexachlorobutadiene	11.64	225	3368	0.413	ng	96
12) 2-Methylnaphthalene	12.94	142	18832	0.392	ng	97
16) Acenaphthylene	14.79	152	19523	0.371	ng	100
17) Acenaphthene	15.13	154	12930	0.380	ng	94
18) Fluorene	16.10	166	16670	0.385	ng	# 78
20) 4-Bromophenyl-phenylether	16.98	248	5044	0.398	ng	# 62
21) Hexachlorobenzene	17.10	284	5096	0.412	ng	# 81
22) Pentachlorophenol	17.43	266	982	0.373	ng	# 71
23) Phenanthrene	17.82	178	28364	0.392	ng	98
24) Anthracene	17.91	178	28480	0.371	ng	# 95
26) Fluoranthene	19.79	202	34337	0.369	ng	100
28) Pyrene	20.14	202	34178	0.394	ng	99
30) Benzo(a)anthracene	21.87	228	30188	0.392	ng	# 61
31) Chrysene	21.92	228	31255	0.367	ng	# 64
32) Bis(2-ethylhexyl)phthalate	21.74	149	32341	0.253	ng	100
33) Indeno(1,2,3-cd)pyrene	27.43	276	26009	0.373	ng	100
35) Benzo(b)fluoranthene	23.73	252	27463	0.386	ng	# 39
36) Benzo(k)fluoranthene	23.79	252	26678	0.368	ng	# 40
37) Benzo(a)pyrene	24.44	252	23812	0.382	ng	# 34
38) Dibenzo(a,h)anthracene	27.46	278	21795	0.378	ng	# 43
39) Benzo(g,h,i)perylene	28.32	276	21933	0.381	ng	# 52

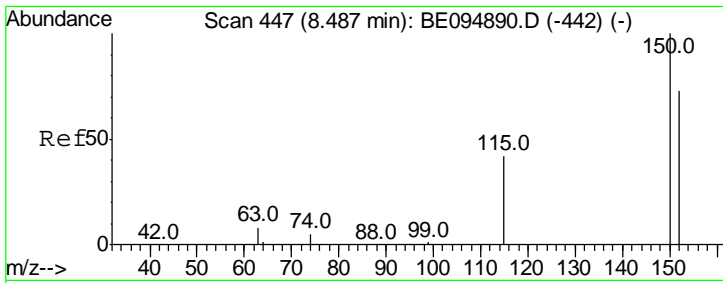
(#) = qualifier out of range (m) = manual integration (+) = signals summed

Data Path : \\74.0.250.170\SVOASRV\HPCHEM1\BNA E\DATA\BE121117\  
 Data File : BE094971.D  
 Acq On : 11 Dec 2017 12:30  
 Operator : SJ/JU  
 Sample : SSTDCCC0.4  
 Misc :  
 ALS Vial : 2 Sample Multiplier: 1

Instrument :  
 BNA\_E  
 Client Sampled :  
 SSTDCCC0.4

Quant Time: Dec 11 15:38:17 2017  
 Quant Method : Z:\HPCHEM1\BNA E\METHODS\8270-SIM-BE113017.M  
 Quant Title : ASP BNA STANDARDS FOR 5 POINT CALIBRATION  
 QLast Update : Fri Dec 01 13:33:28 2017  
 Response via : Initial Calibration

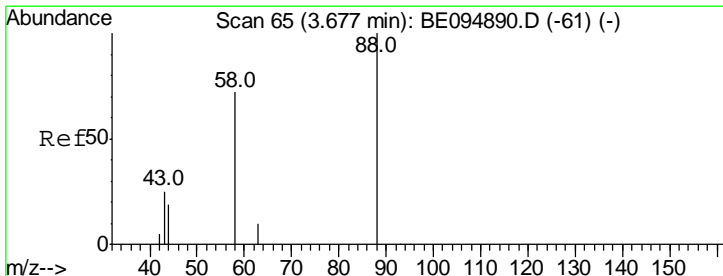
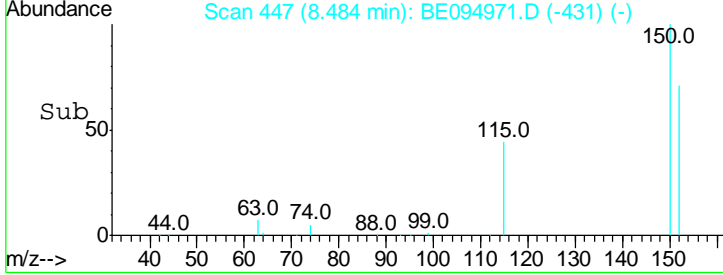
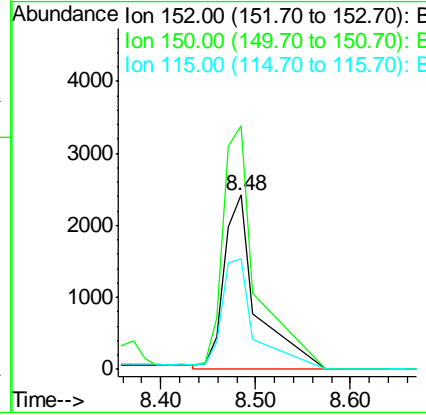
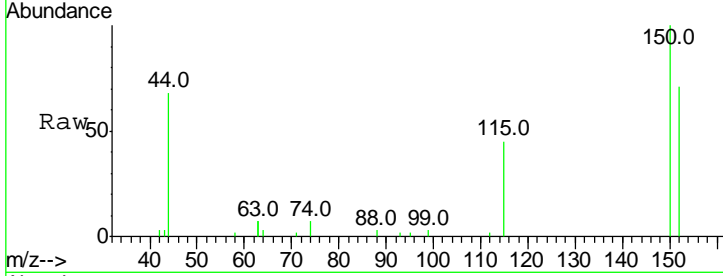




#1  
 1,4-Dichlorobenzene-d4  
 Concen: 0.400 ng  
 RT: 8.48 min Scan# 447  
 Delta R.T. -0.00 min  
 Lab File: BE094971.D  
 Acq: 11 Dec 2017 12:30

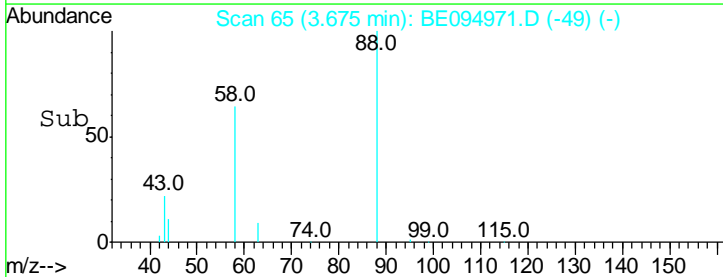
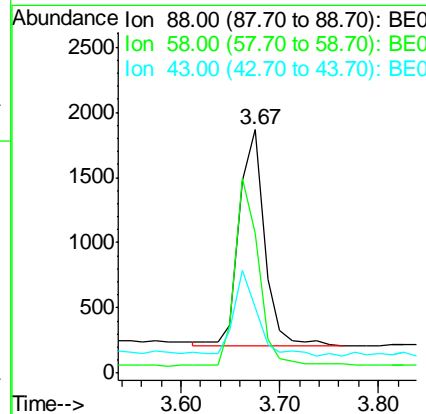
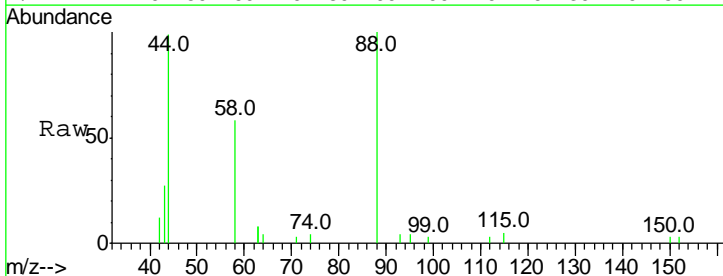
**Instrument :**  
 BNA\_E  
**ClientSampled :**  
 SSTDCCC0.4

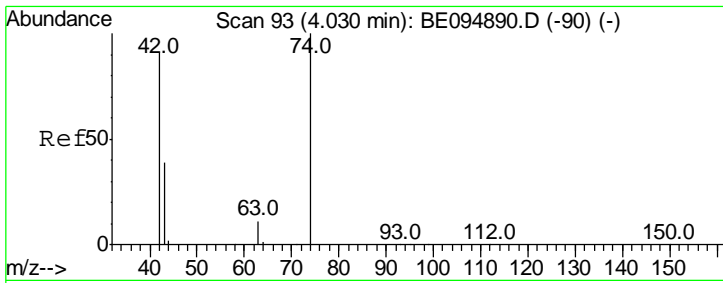
Tgt Ion	Resp	Lower	Upper
152	7677		
152	100		
150	140.0	117.2	175.8
115	63.6	57.0	85.6



#2  
 1,4-Dioxane  
 Concen: 0.369 ng  
 RT: 3.67 min Scan# 65  
 Delta R.T. -0.00 min  
 Lab File: BE094971.D  
 Acq: 11 Dec 2017 12:30

Tgt Ion	Resp	Lower	Upper
88	2961		
88	100		
58	81.4	63.2	94.8
43	35.9	41.2	61.8#

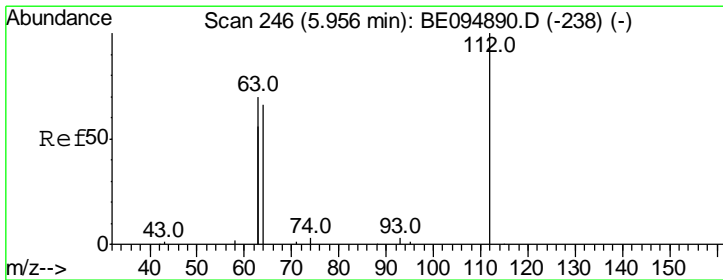
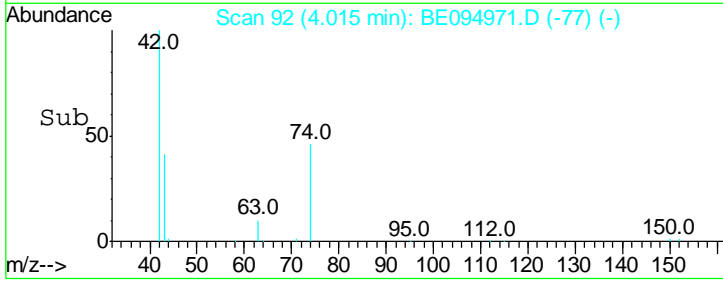
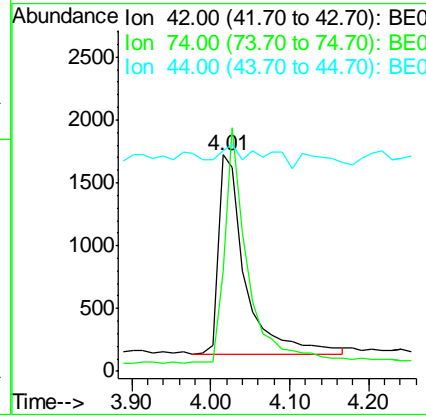
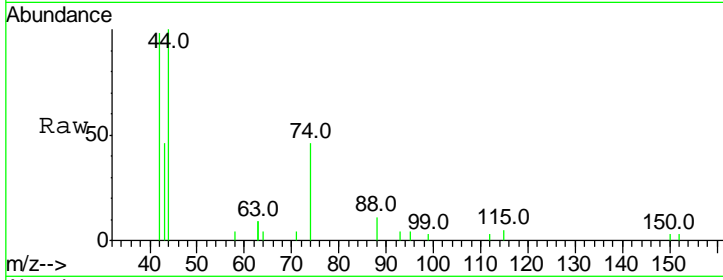




#3  
 n-Nitrosodimethylamine  
 Concen: 0.371 ng  
 RT: 4.01 min Scan# 92  
 Delta R.T. -0.02 min  
 Lab File: BE094971.D  
 Acq: 11 Dec 2017 12:30

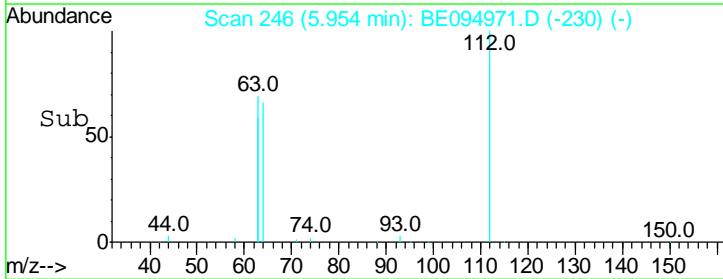
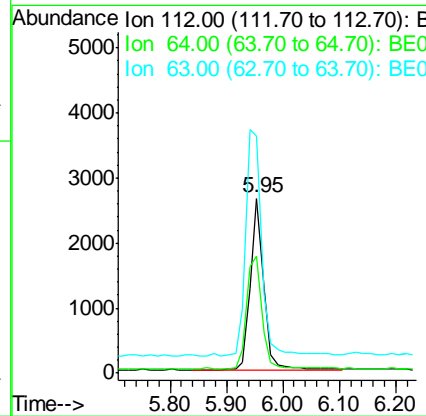
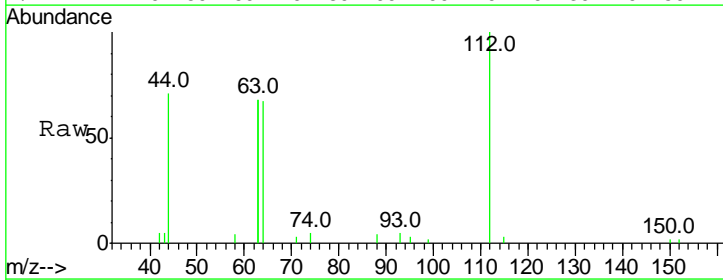
**Instrument :**  
 BNA\_E  
**ClientSampleId :**  
 SSTDCCC0.4

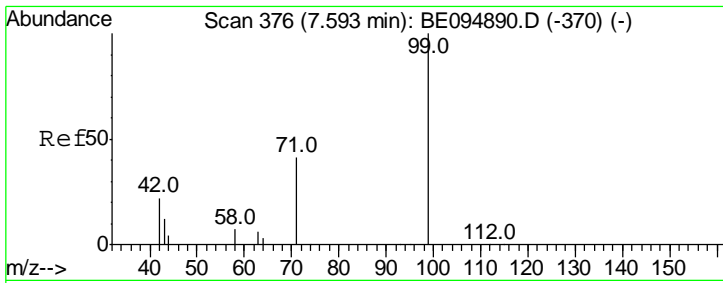
Tgt Ion	Resp	Lower	Upper
42	100		
74	102.7	100.3	150.5
44	8.3	17.0	25.4#



#4  
 2-Fluorophenol  
 Concen: 0.365 ng  
 RT: 5.95 min Scan# 246  
 Delta R.T. -0.00 min  
 Lab File: BE094971.D  
 Acq: 11 Dec 2017 12:30

Tgt Ion	Resp	Lower	Upper
112	100		
64	75.4	60.1	90.1
63	159.3	116.8	175.2

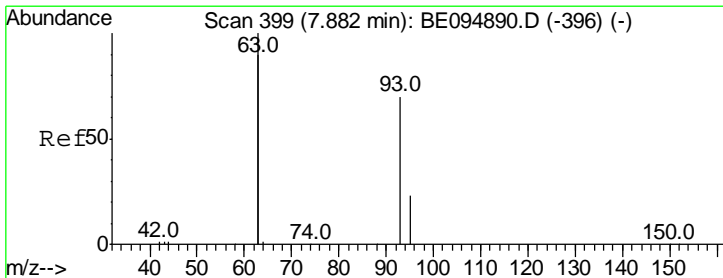
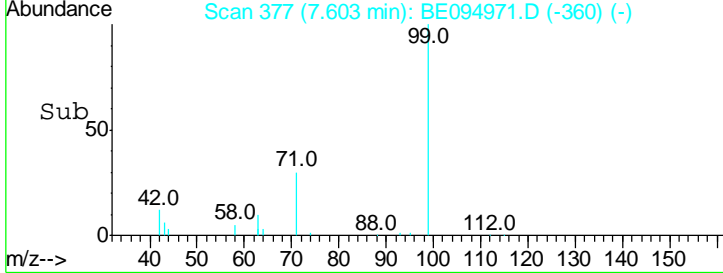
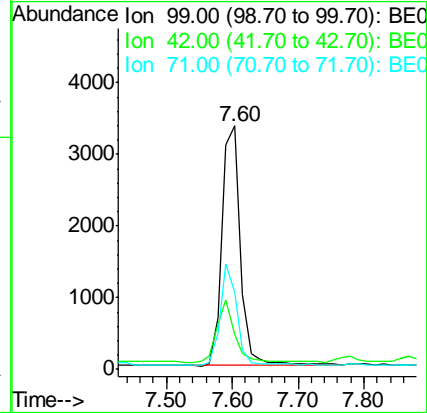
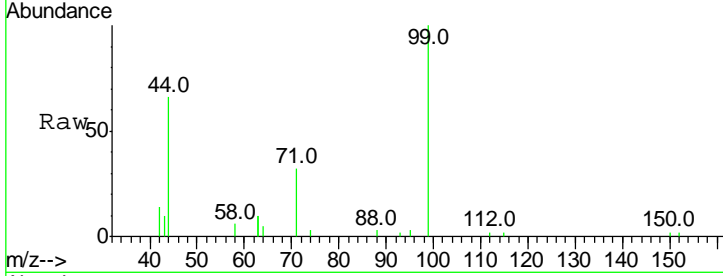




#5  
 Phenol-d6  
 Concen: 0.364 ng  
 RT: 7.60 min Scan# 377  
 Delta R.T. 0.01 min  
 Lab File: BE094971.D  
 Acq: 11 Dec 2017 12:30

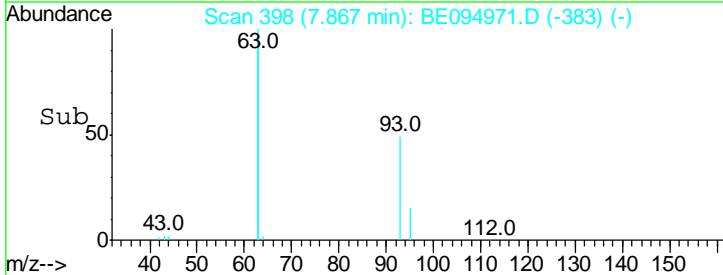
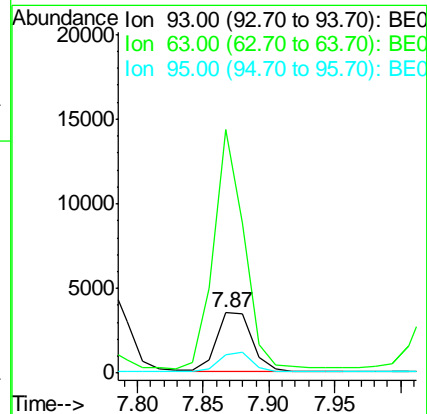
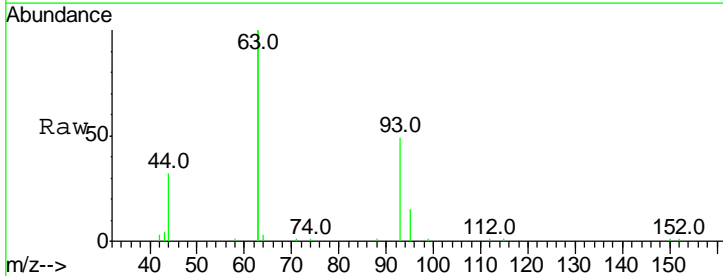
Instrument :  
 BNA\_E  
 ClientSampleId :  
 SSTDCCC0.4

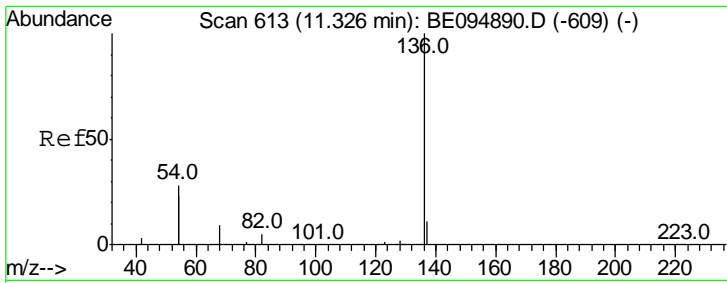
Tgt Ion	Resp	Lower	Upper
99	100		
42	25.1	20.2	30.2
71	39.4	28.4	42.6



#6  
 bis(2-Chloroethyl)ether  
 Concen: 0.366 ng  
 RT: 7.87 min Scan# 398  
 Delta R.T. -0.02 min  
 Lab File: BE094971.D  
 Acq: 11 Dec 2017 12:30

Tgt Ion	Resp	Lower	Upper
93	100		
63	340.4	275.3	412.9
95	31.6	25.2	37.8

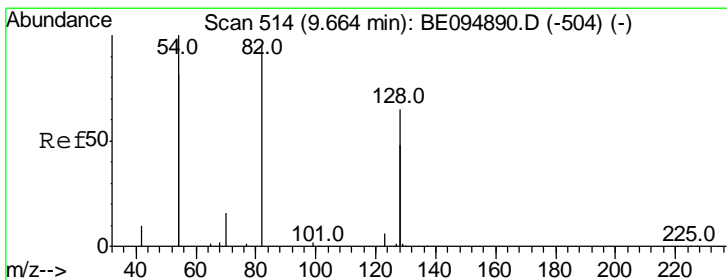
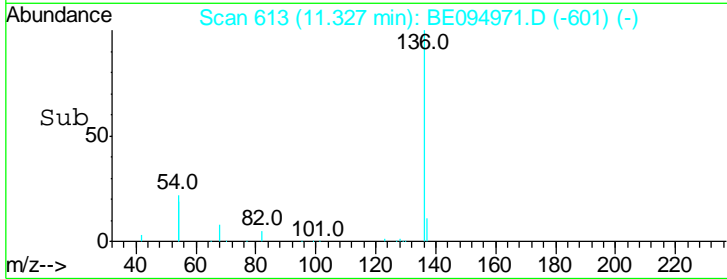
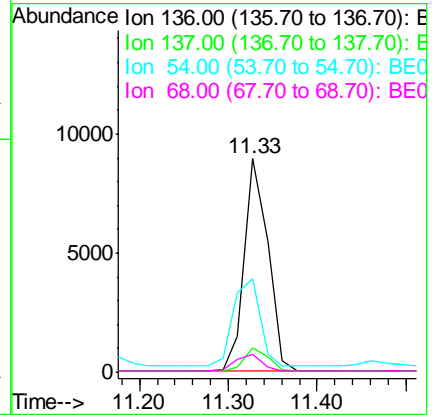
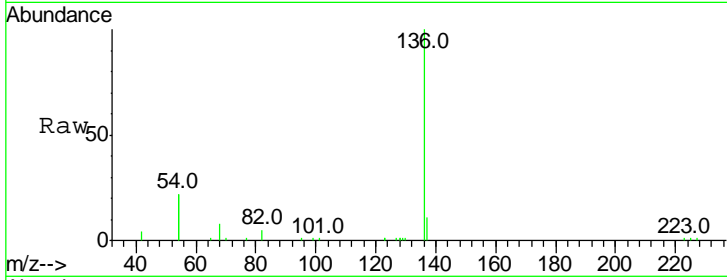




#7  
 Naphthalene-d8  
 Concen: 0.400 ng  
 RT: 11.33 min Scan# 613  
 Delta R.T. 0.00 min  
 Lab File: BE094971.D  
 Acq: 11 Dec 2017 12:30

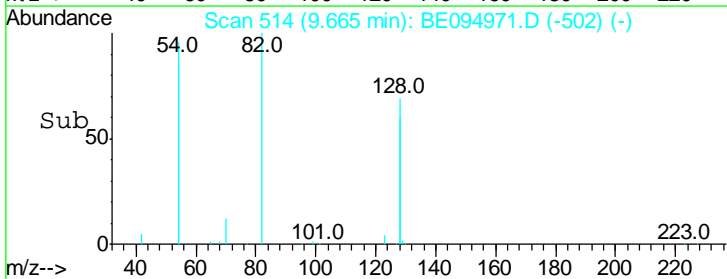
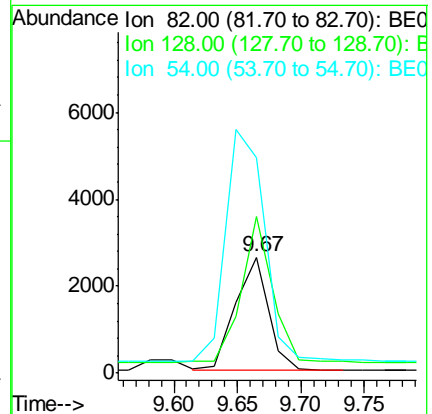
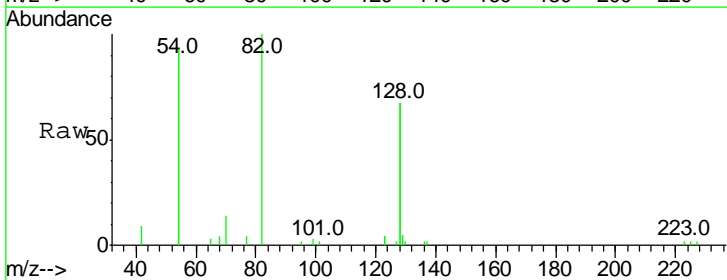
**Instrument :**  
 BNA\_E  
**ClientSampleId :**  
 SSTDCCC0.4

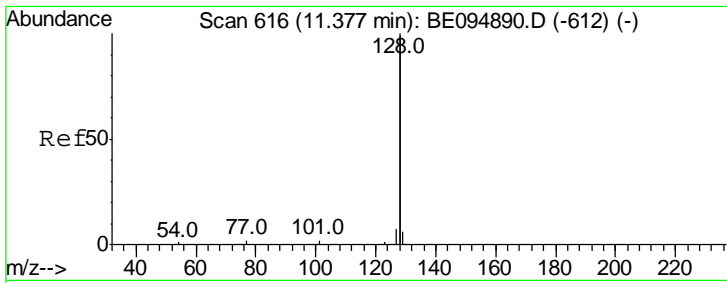
Tgt Ion	Resp	Lower	Upper
136	16502		
137	11.3	9.5	14.3
54	43.9	29.1	43.7#
68	8.3	6.2	9.2



#8  
 Nitrobenzene-d5  
 Concen: 0.489 ng  
 RT: 9.67 min Scan# 514  
 Delta R.T. 0.00 min  
 Lab File: BE094971.D  
 Acq: 11 Dec 2017 12:30

Tgt Ion	Resp	Lower	Upper
82	4780		
128	135.0	150.0	225.0#
54	186.6	154.2	231.4

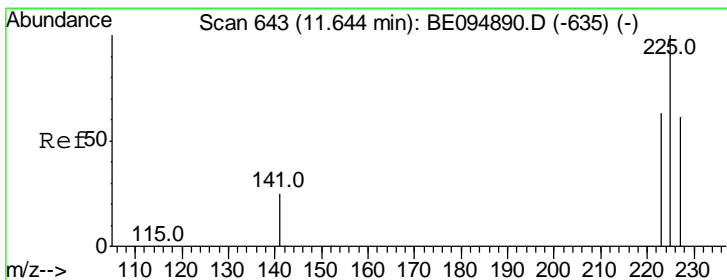
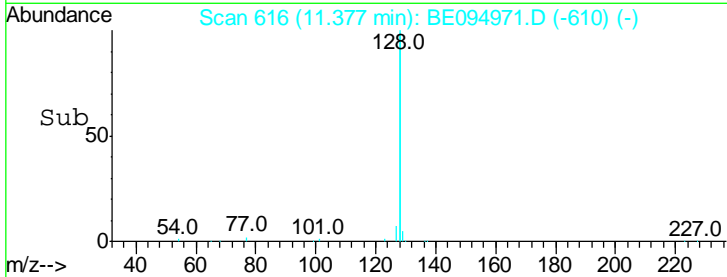
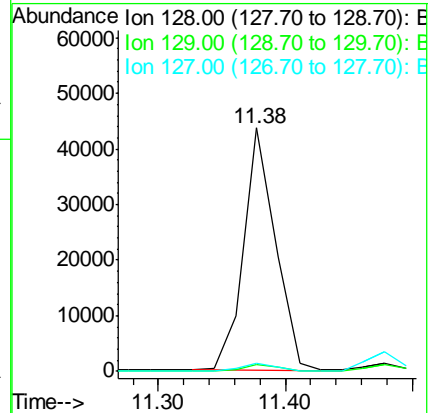
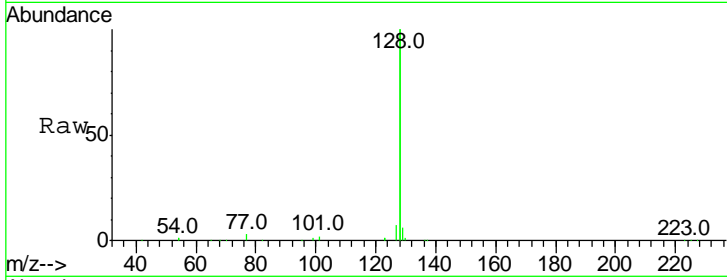




#9  
 Naphthalene  
 Concen: 0.394 ng  
 RT: 11.38 min Scan# 616  
 Delta R.T. 0.00 min  
 Lab File: BE094971.D  
 Acq: 11 Dec 2017 12:30

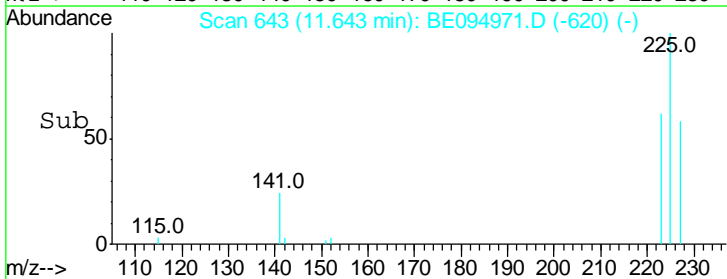
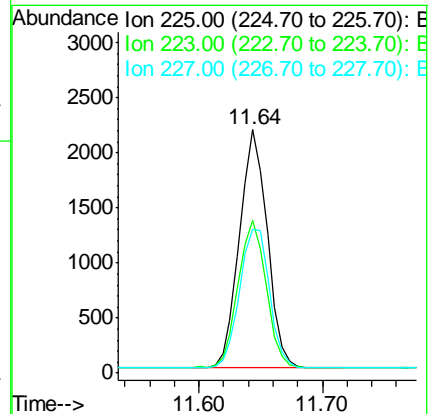
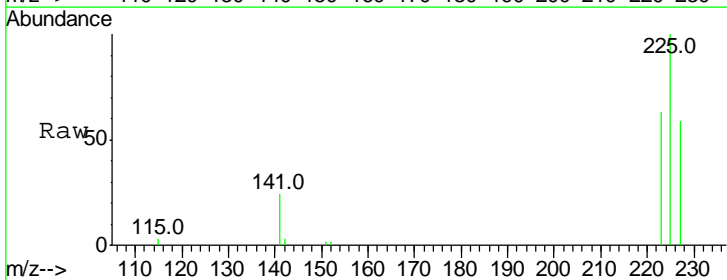
**Instrument :**  
 BNA\_E  
**ClientSampleId :**  
 SSTDCCC0.4

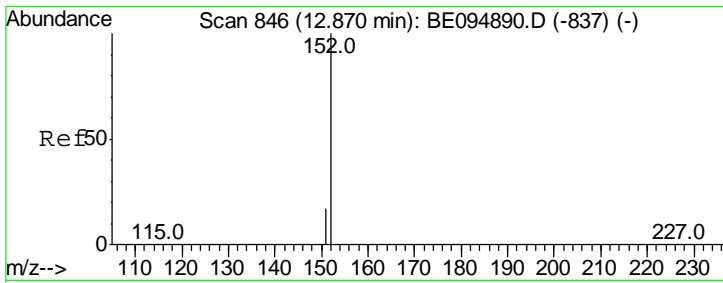
Tgt Ion	Resp	Lower	Upper
128	100		
129	2.8	2.6	3.8
127	3.4	2.8	4.2



#10  
 Hexachlorobutadiene  
 Concen: 0.413 ng  
 RT: 11.64 min Scan# 643  
 Delta R.T. -0.00 min  
 Lab File: BE094971.D  
 Acq: 11 Dec 2017 12:30

Tgt Ion	Resp	Lower	Upper
225	100		
223	61.9	53.0	79.6
227	63.1	51.4	77.2

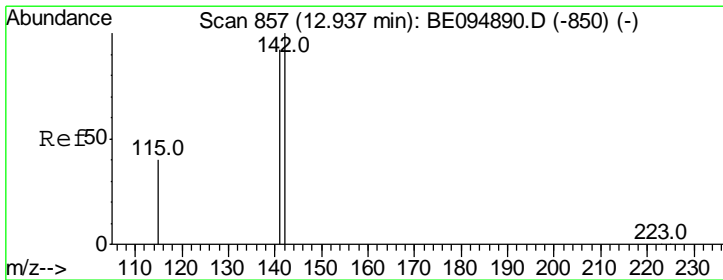
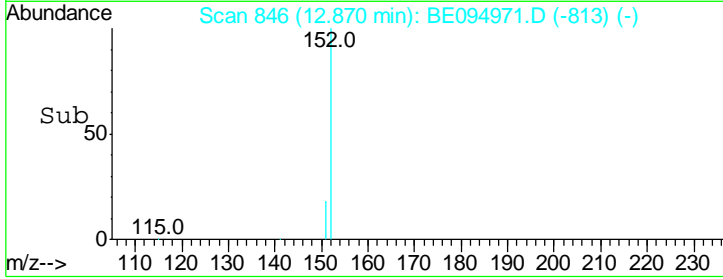
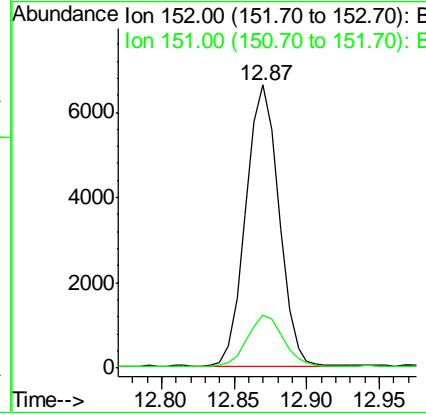
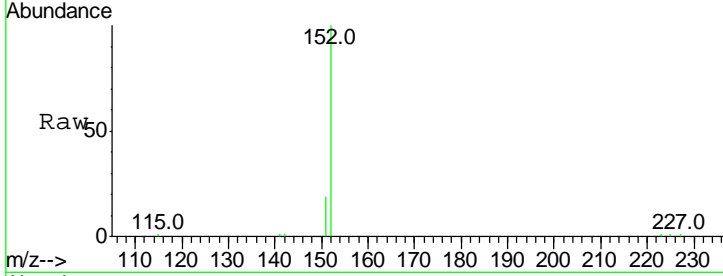




#11  
 2-Methylnaphthalene-d10  
 Concen: 0.395 ng  
 RT: 12.87 min Scan# 846  
 Delta R.T. -0.00 min  
 Lab File: BE094971.D  
 Acq: 11 Dec 2017 12:30

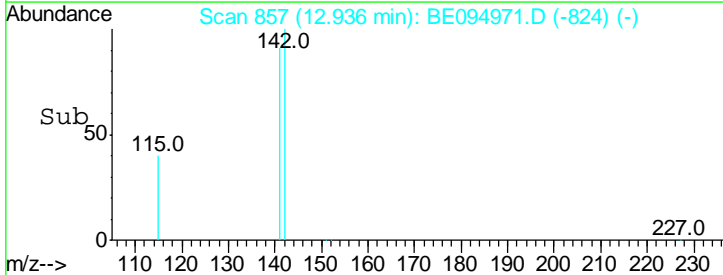
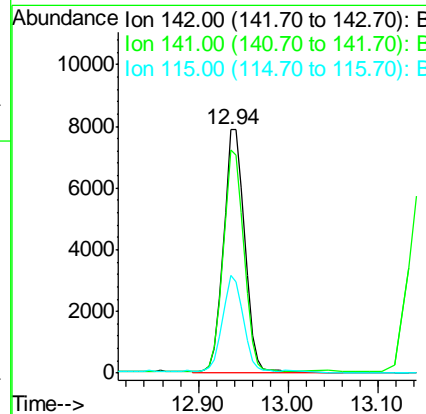
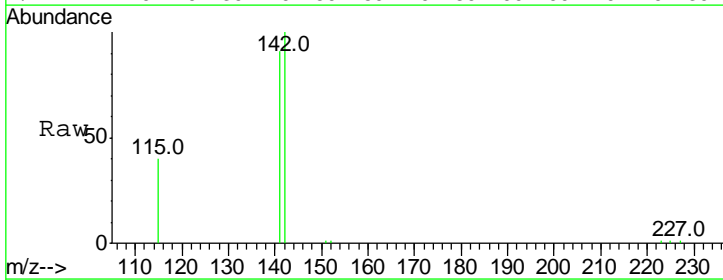
Instrument :  
 BNA\_E  
 ClientSampleId :  
 SSTDCCC0.4

Tgt Ion	Resp	Lower	Upper
152	10405		
151	19.1	15.4	23.0

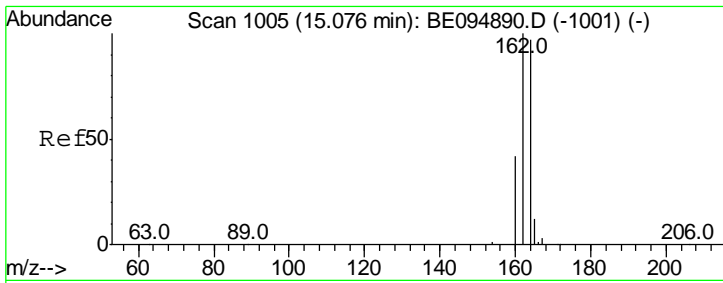


#12  
 2-Methylnaphthalene  
 Concen: 0.392 ng  
 RT: 12.94 min Scan# 857  
 Delta R.T. -0.00 min  
 Lab File: BE094971.D  
 Acq: 11 Dec 2017 12:30

Tgt Ion	Resp	Lower	Upper
142	18832		
141	91.5	70.4	105.6
115	40.3	31.7	47.5



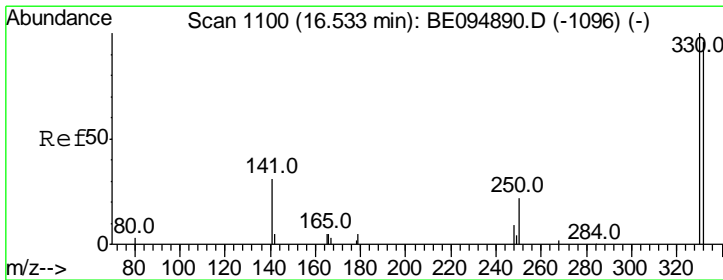
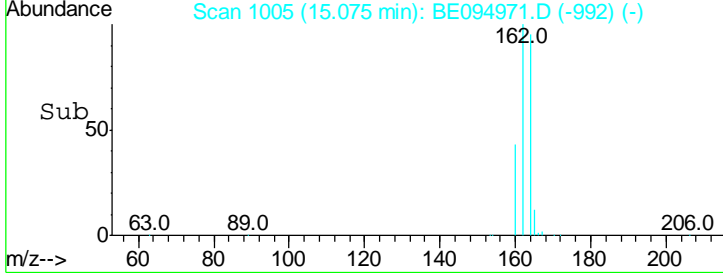
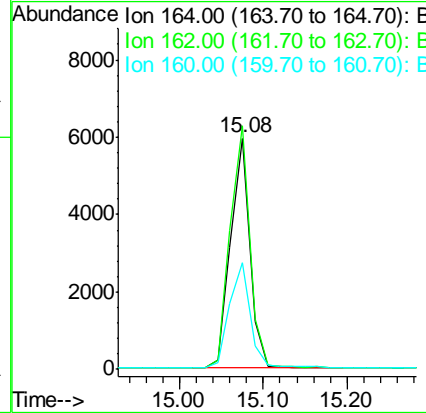
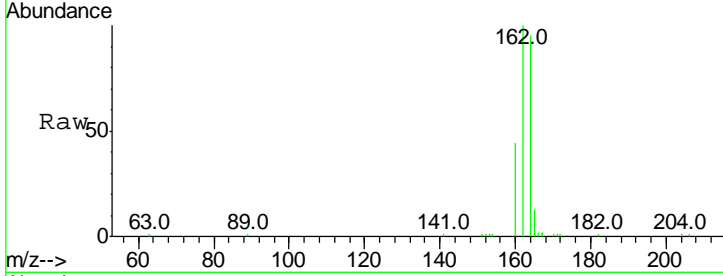




#13  
 Acenaphthene-d10  
 Concen: 0.400 ng  
 RT: 15.08 min Scan# 1005  
 Delta R.T. -0.00 min  
 Lab File: BE094971.D  
 Acq: 11 Dec 2017 12:30

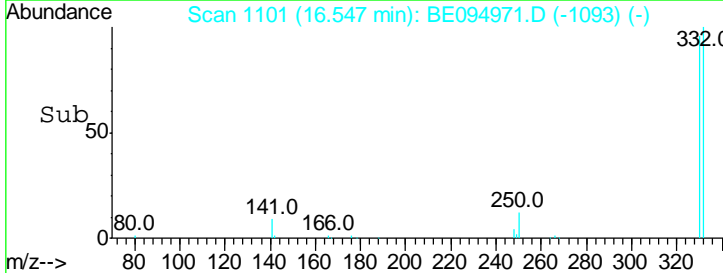
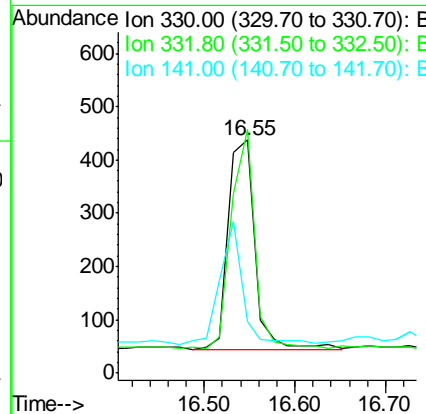
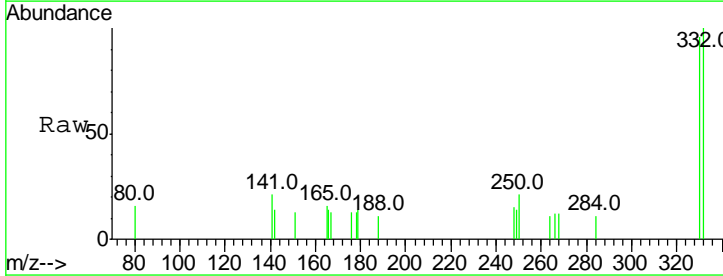
Instrument :  
 BNA\_E  
 ClientSampleId :  
 SSTDCCC0.4

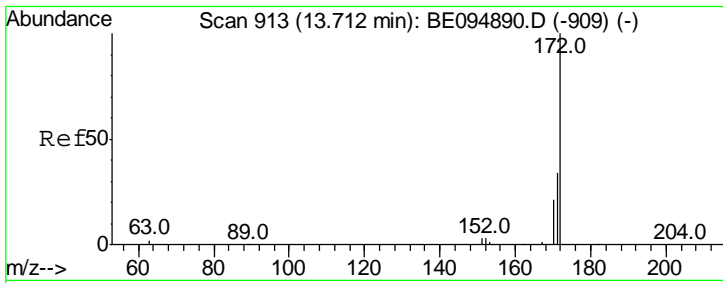
Tgt Ion	Resp	Lower	Upper
164	100		
162	105.2	83.1	124.7
160	46.0	37.1	55.7



#14  
 2,4,6-Tribromophenol  
 Concen: 0.424 ng  
 RT: 16.55 min Scan# 1101  
 Delta R.T. 0.02 min  
 Lab File: BE094971.D  
 Acq: 11 Dec 2017 12:30

Tgt Ion	Resp	Lower	Upper
330	100		
332	90.2	152.7	229.1#
141	49.5	33.7	50.5

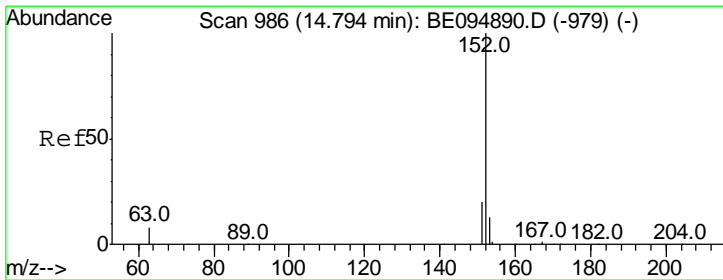
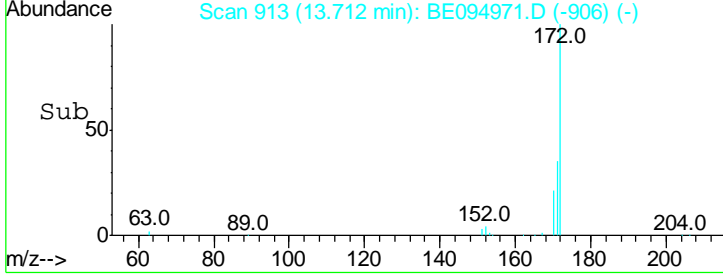
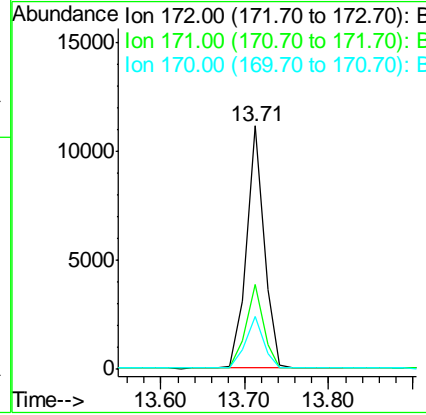
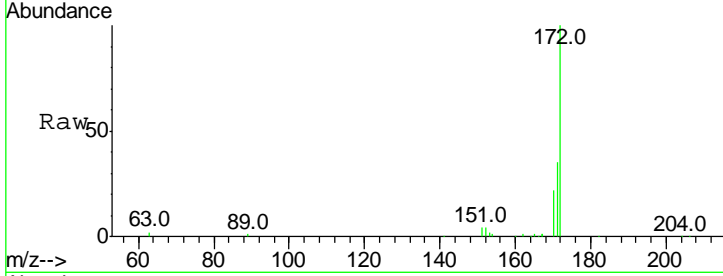




#15  
 2-Fluorobiphenyl  
 Concen: 0.403 ng  
 RT: 13.71 min Scan# 913  
 Delta R.T. -0.00 min  
 Lab File: BE094971.D  
 Acq: 11 Dec 2017 12:30

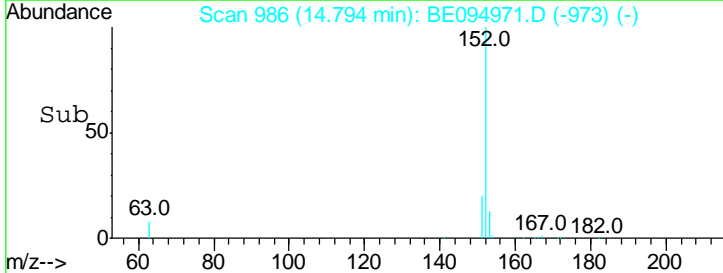
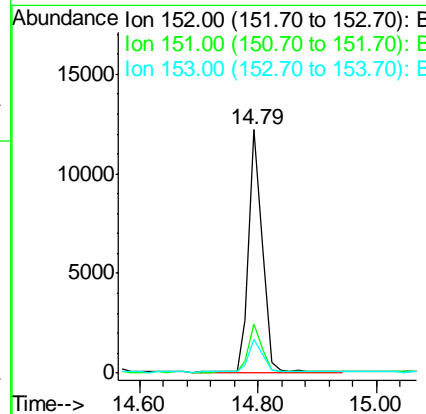
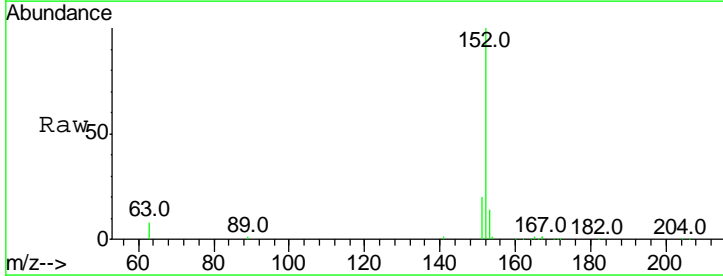
Instrument :  
 BNA\_E  
 ClientSampleId :  
 SSTDCCC0.4

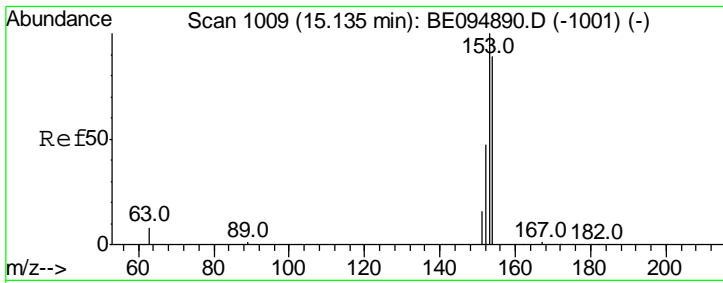
Tgt Ion	Resp	Lower	Upper
172	16060		
171	34.9	29.9	44.9
170	21.9	21.8	32.8



#16  
 Acenaphthylene  
 Concen: 0.371 ng  
 RT: 14.79 min Scan# 986  
 Delta R.T. -0.00 min  
 Lab File: BE094971.D  
 Acq: 11 Dec 2017 12:30

Tgt Ion	Resp	Lower	Upper
152	19523		
151	19.5	15.7	23.5
153	13.4	10.5	15.7

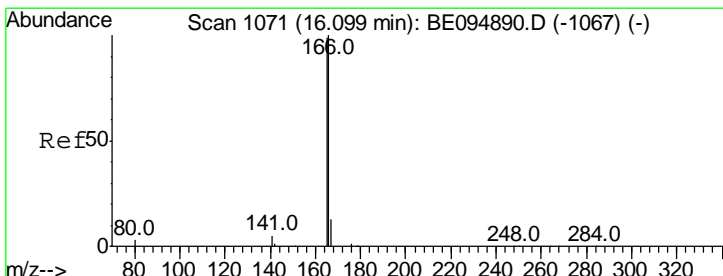
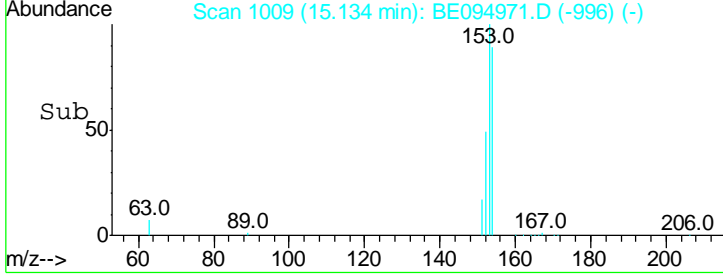
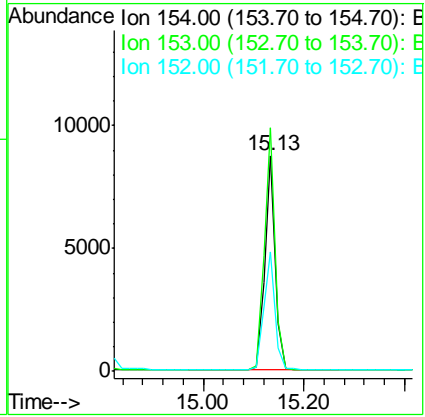
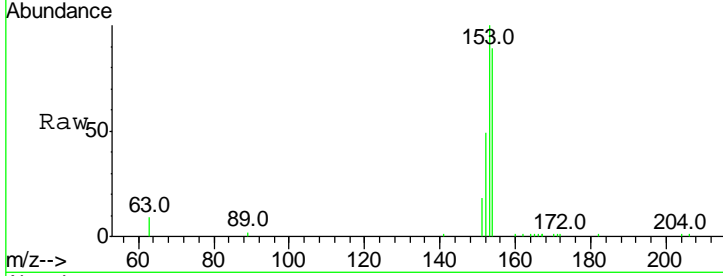




#17  
 Acenaphthene  
 Concen: 0.380 ng  
 RT: 15.13 min Scan# 1009  
 Delta R.T. -0.00 min  
 Lab File: BE094971.D  
 Acq: 11 Dec 2017 12:30

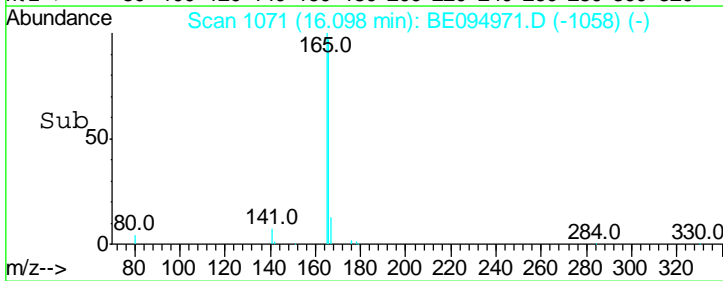
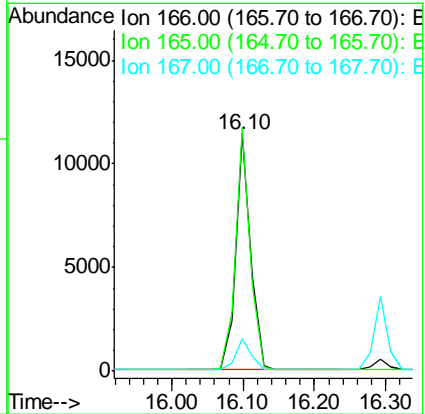
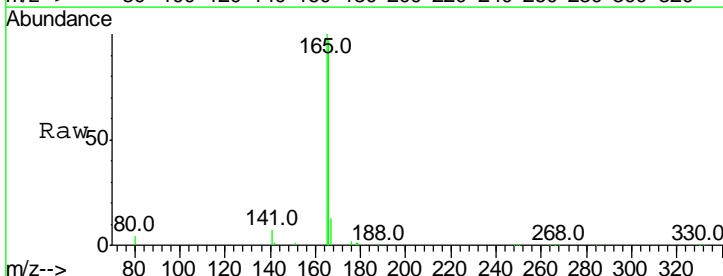
Instrument : BNA\_E  
 ClientSampleId : SSTDCCC0.4

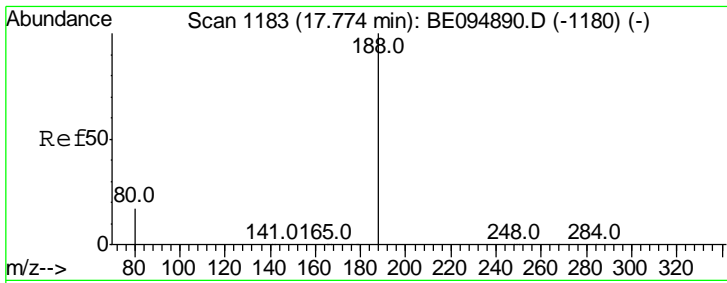
Tgt Ion	Resp	Lower	Upper
154	100		
153	115.9	89.2	133.8
152	59.0	42.0	63.0



#18  
 Fluorene  
 Concen: 0.385 ng  
 RT: 16.10 min Scan# 1071  
 Delta R.T. -0.00 min  
 Lab File: BE094971.D  
 Acq: 11 Dec 2017 12:30

Tgt Ion	Resp	Lower	Upper
166	100		
165	101.0	77.8	116.6
167	13.5	42.4	63.6#

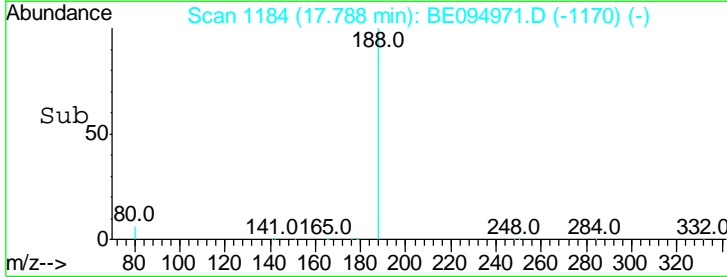
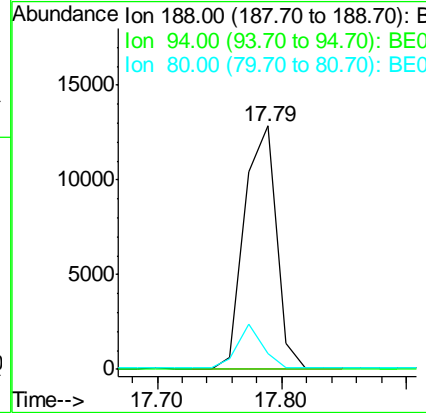
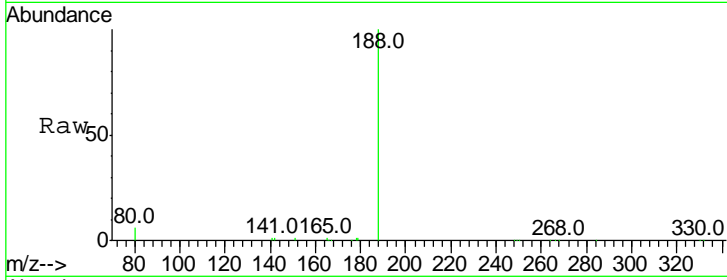




#19  
 Phenanthrene-d10  
 Concen: 0.400 ng  
 RT: 17.79 min Scan# 1184  
 Delta R.T. 0.01 min  
 Lab File: BE094971.D  
 Acq: 11 Dec 2017 12:30

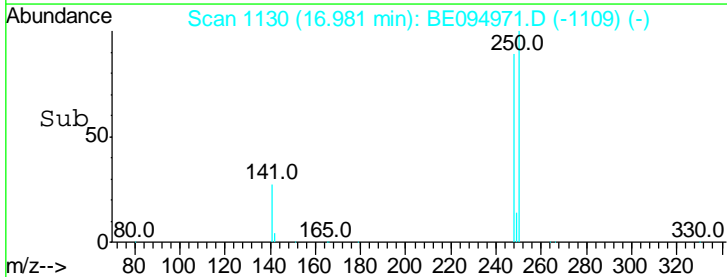
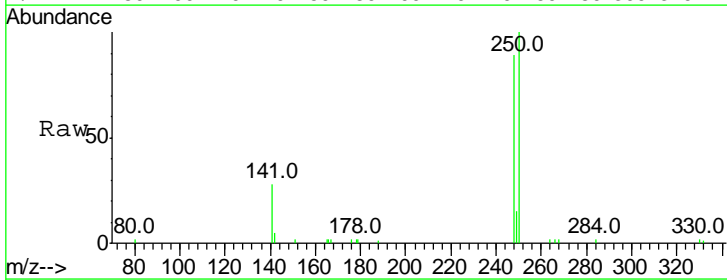
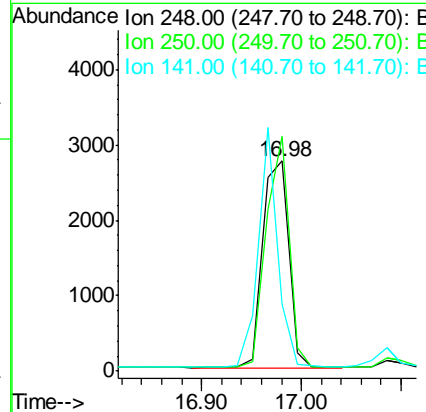
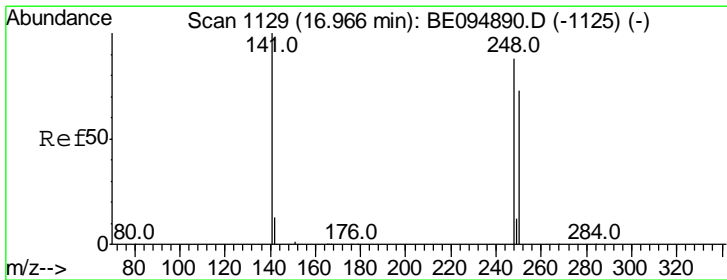
**Instrument :**  
 BNA\_E  
**ClientSampled :**  
 SSTDCCC0.4

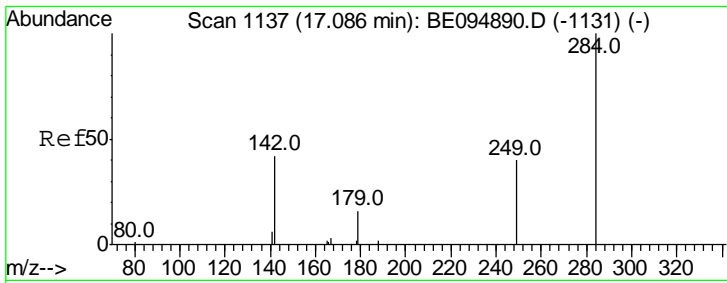
Tgt Ion	Resp	Lower	Upper
188	100		
94	0.0	3.9	5.9#
80	6.3	3.6	5.4#



#20  
 4-Bromophenyl-phenylether  
 Concen: 0.398 ng  
 RT: 16.98 min Scan# 1130  
 Delta R.T. 0.01 min  
 Lab File: BE094971.D  
 Acq: 11 Dec 2017 12:30

Tgt Ion	Resp	Lower	Upper
248	100		
250	111.9	62.7	94.1#
141	31.7	48.2	72.2#

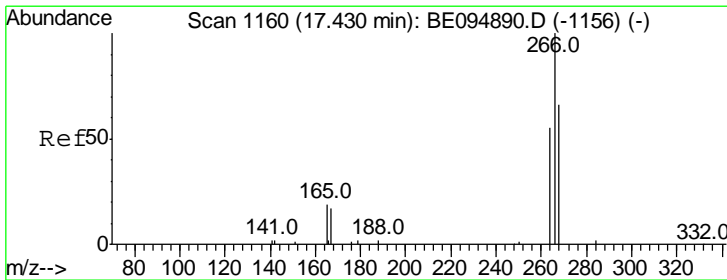
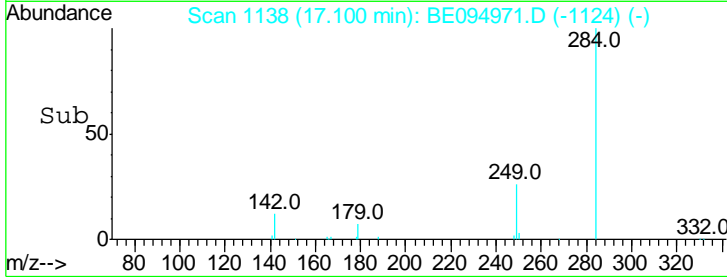
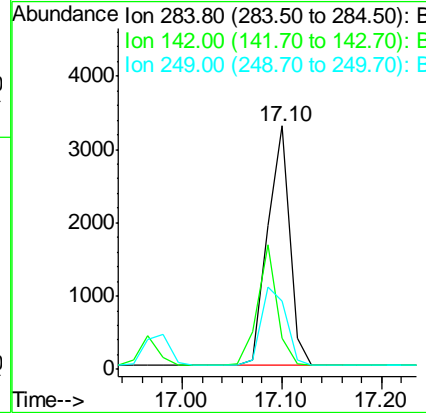
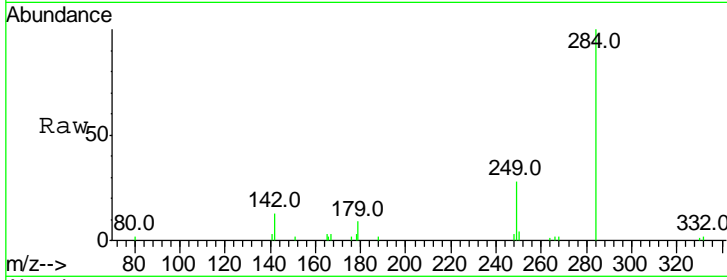




#21  
 Hexachlorobenzene  
 Concen: 0.412 ng  
 RT: 17.10 min Scan# 1138  
 Delta R.T. 0.01 min  
 Lab File: BE094971.D  
 Acq: 11 Dec 2017 12:30

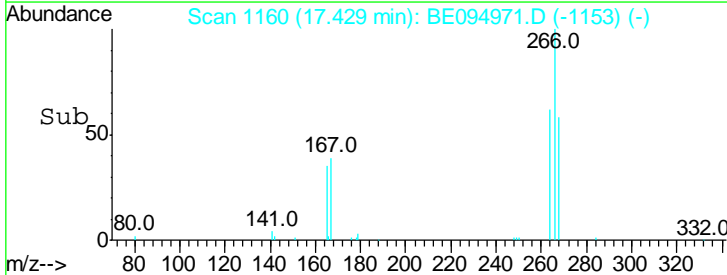
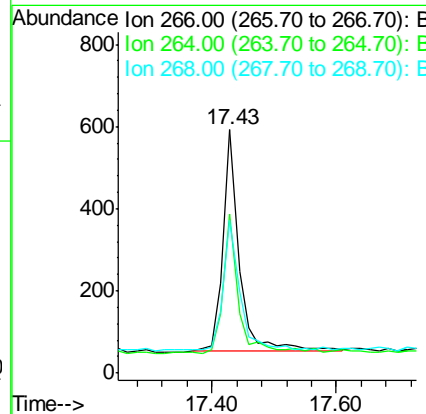
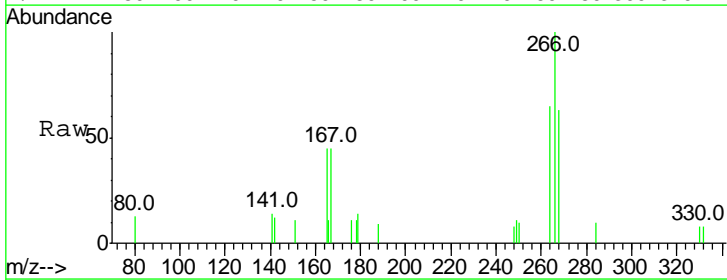
Instrument :  
 BNA\_E  
 ClientSampled :  
 SSTDCCC0.4

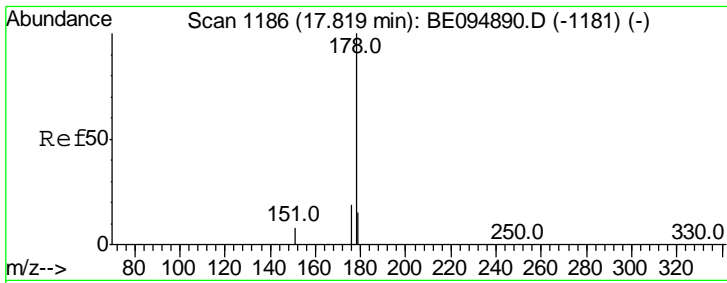
Tgt Ion	Resp	Lower	Upper
284	5096		
284	100		
142	45.2	22.1	33.1#
249	37.0	34.8	52.2



#22  
 Pentachlorophenol  
 Concen: 0.373 ng  
 RT: 17.43 min Scan# 1160  
 Delta R.T. 0.00 min  
 Lab File: BE094971.D  
 Acq: 11 Dec 2017 12:30

Tgt Ion	Resp	Lower	Upper
266	982		
266	100		
264	65.1	72.5	108.7#
268	62.9	73.8	110.6#

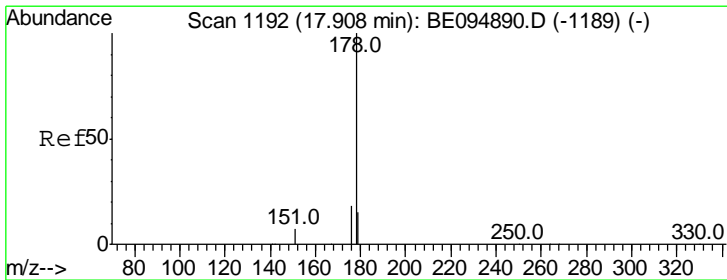
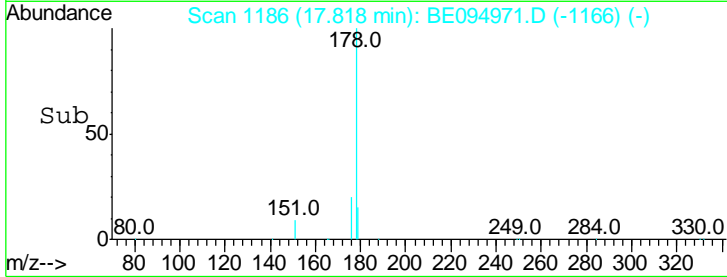
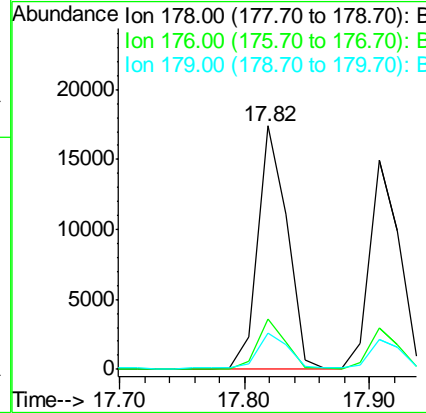
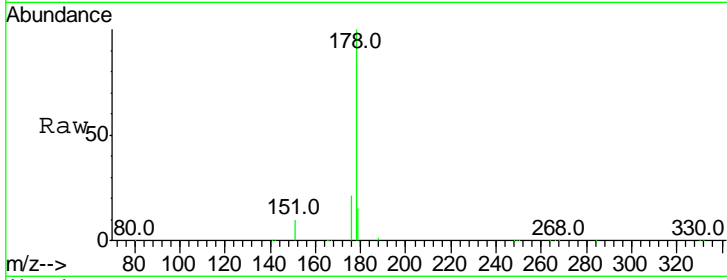




#23  
 Phenanthrene  
 Concen: 0.392 ng  
 RT: 17.82 min Scan# 1186  
 Delta R.T. -0.00 min  
 Lab File: BE094971.D  
 Acq: 11 Dec 2017 12:30

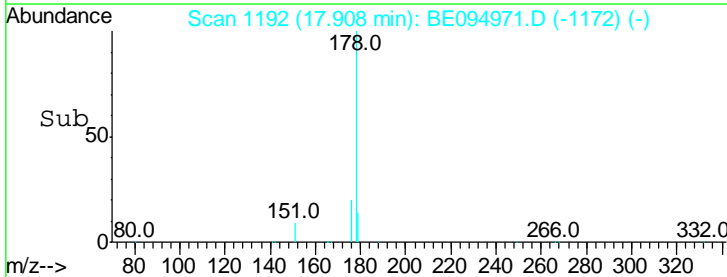
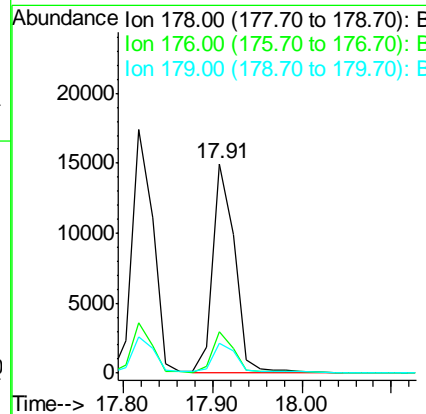
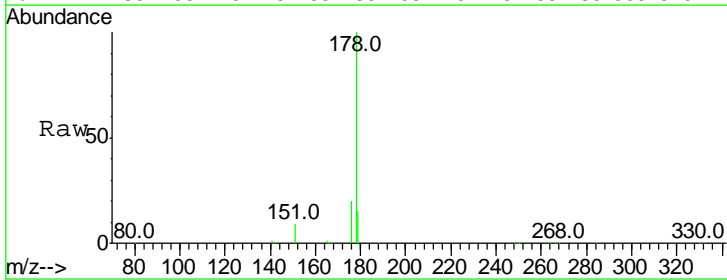
Instrument :  
 BNA\_E  
 ClientSampleId :  
 SSTDCCC0.4

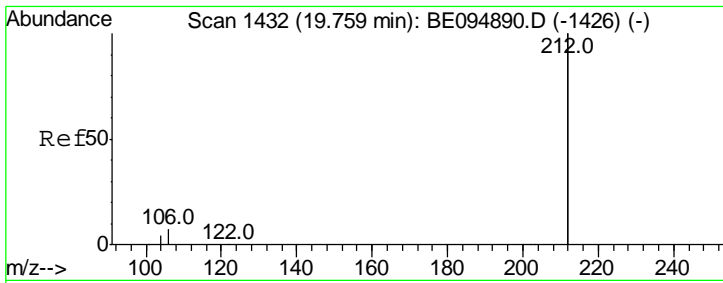
Tgt Ion	Resp	Lower	Upper
178	100		
176	19.5	15.1	22.7
179	15.7	11.8	17.6



#24  
 Anthracene  
 Concen: 0.371 ng  
 RT: 17.91 min Scan# 1192  
 Delta R.T. -0.00 min  
 Lab File: BE094971.D  
 Acq: 11 Dec 2017 12:30

Tgt Ion	Resp	Lower	Upper
178	100		
176	20.4	12.8	19.2#
179	16.5	13.0	19.6



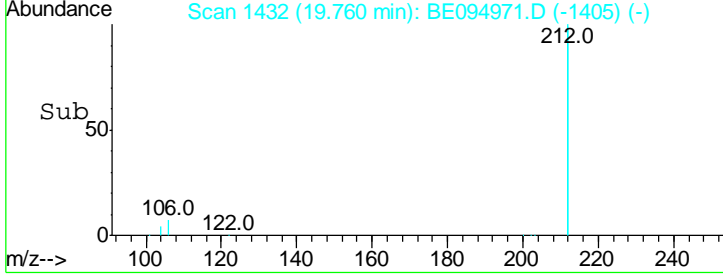
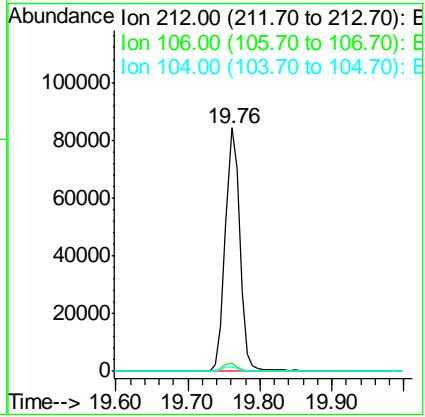
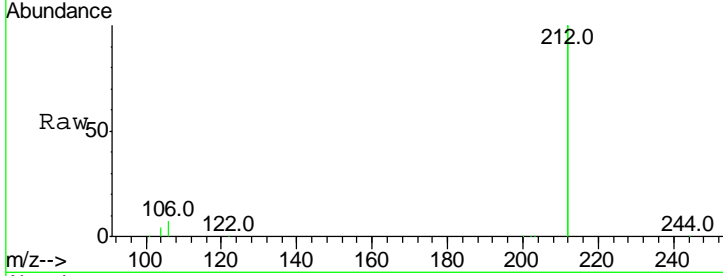


#25  
 Fluoranthene-d10  
 Concen: 0.372 ng  
 RT: 19.76 min Scan# 1432  
 Delta R.T. 0.00 min  
 Lab File: BE094971.D  
 Acq: 11 Dec 2017 12:30

**Instrument :**  
 BNA\_E  
**ClientSampled :**  
 SSTDCCC0.4

Tgt Ion: 212 Resp: 115547

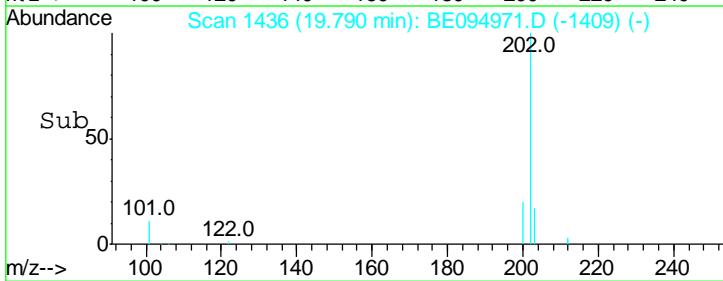
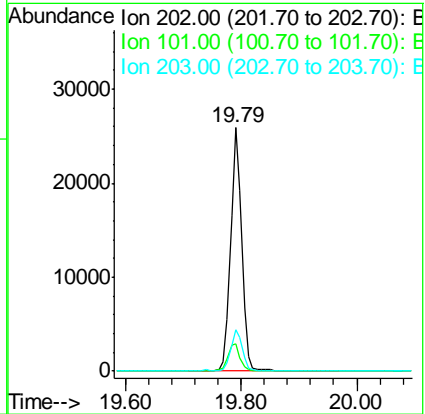
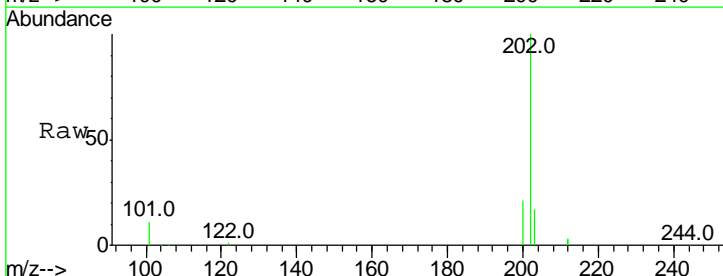
Ion	Ratio	Lower	Upper
212	100		
106	3.3	2.8	4.2
104	1.9	1.6	2.4

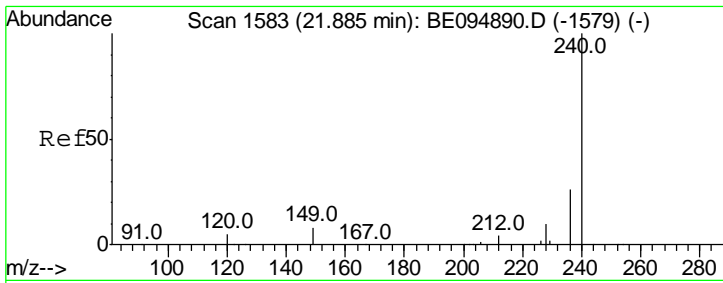


#26  
 Fluoranthene  
 Concen: 0.369 ng  
 RT: 19.79 min Scan# 1436  
 Delta R.T. 0.00 min  
 Lab File: BE094971.D  
 Acq: 11 Dec 2017 12:30

Tgt Ion: 202 Resp: 34337

Ion	Ratio	Lower	Upper
202	100		
101	12.0	9.8	14.8
203	17.0	13.7	20.5



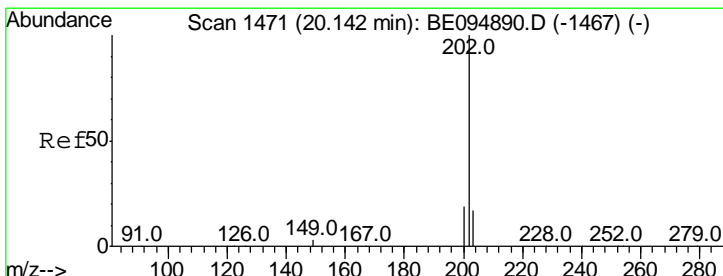
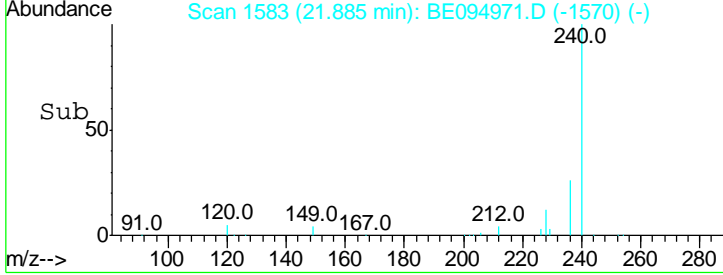
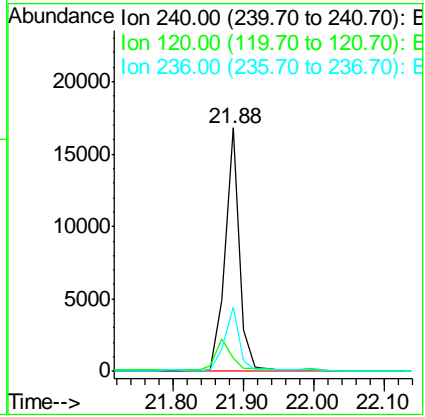
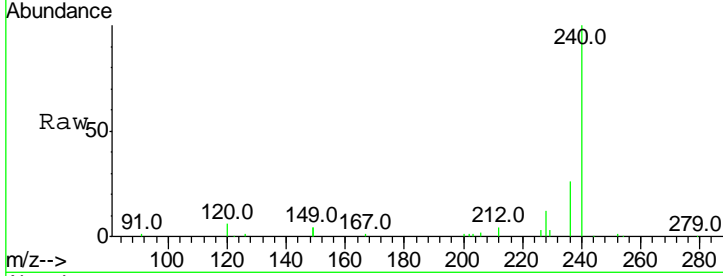


#27  
 Chrysene-d12  
 Concen: 0.400 ng  
 RT: 21.88 min Scan# 1583  
 Delta R.T. -0.00 min  
 Lab File: BE094971.D  
 Acq: 11 Dec 2017 12:30

Instrument : BNA\_E  
 ClientSampled : SSTDCCC0.4

Tgt Ion: 240 Resp: 25141

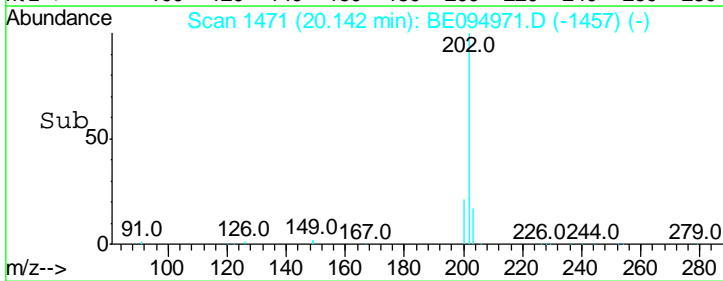
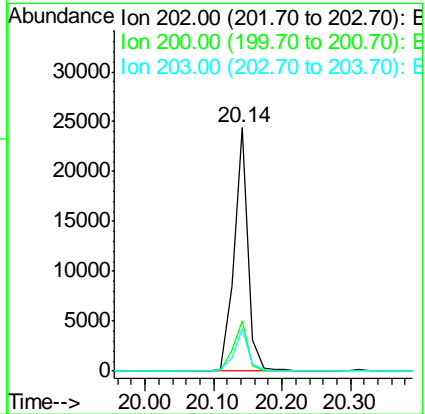
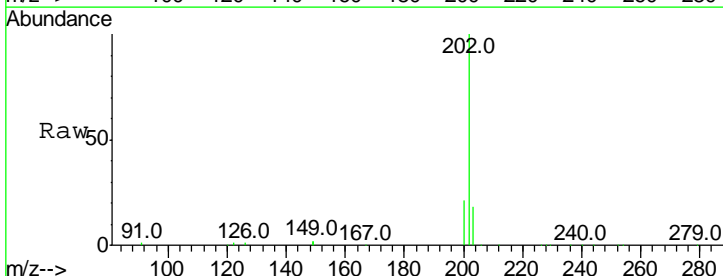
Ion	Ratio	Lower	Upper
240	100		
120	5.7	5.5	8.3
236	26.3	20.7	31.1



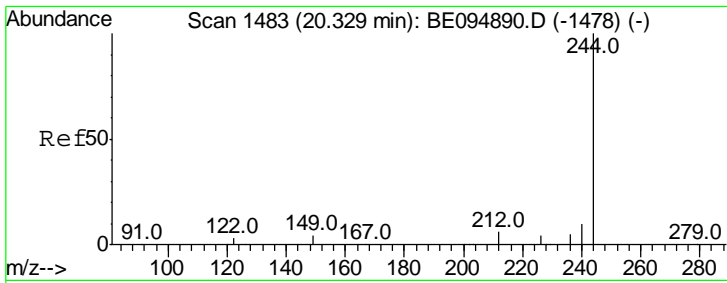
#28  
 Pyrene  
 Concen: 0.394 ng  
 RT: 20.14 min Scan# 1471  
 Delta R.T. -0.00 min  
 Lab File: BE094971.D  
 Acq: 11 Dec 2017 12:30

Tgt Ion: 202 Resp: 34178

Ion	Ratio	Lower	Upper
202	100		
200	21.3	16.6	25.0
203	17.2	13.8	20.8



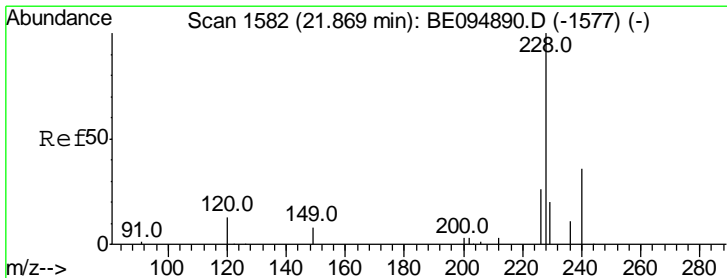
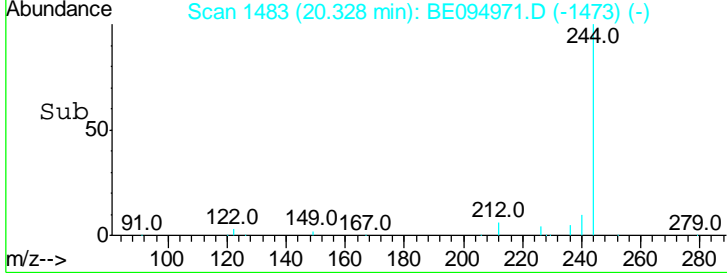
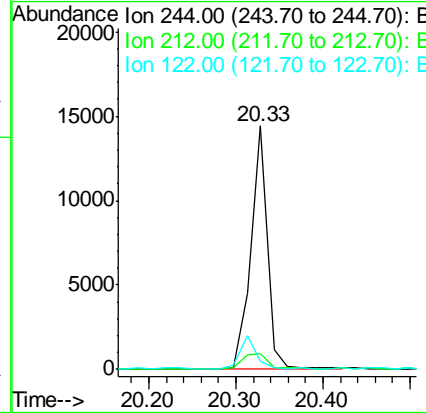
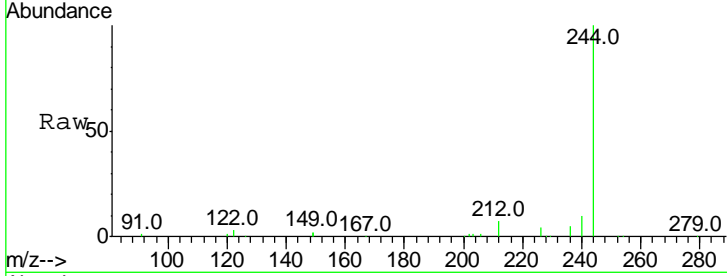




#29  
 Terphenyl-d14  
 Concen: 0.405 ng  
 RT: 20.33 min Scan# 1483  
 Delta R.T. -0.00 min  
 Lab File: BE094971.D  
 Acq: 11 Dec 2017 12:30

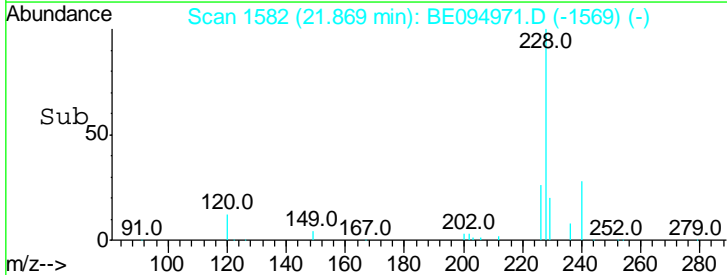
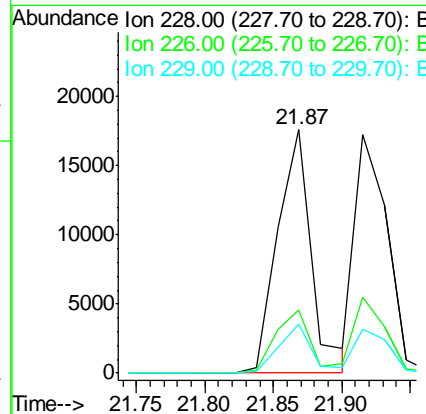
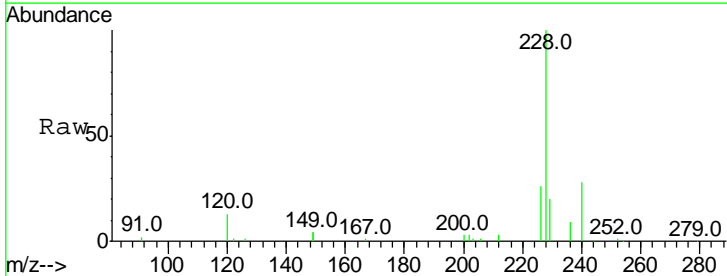
Instrument :  
 BNA\_E  
 ClientSampleId :  
 SSTDCCC0.4

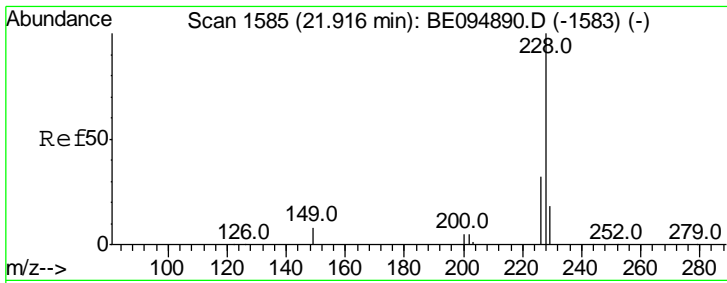
Tgt Ion	Ratio	Lower	Upper
244	100		
212	6.7	25.4	38.0#
122	3.3	8.1	12.1#



#30  
 Benzo(a)anthracene  
 Concen: 0.392 ng  
 RT: 21.87 min Scan# 1582  
 Delta R.T. -0.00 min  
 Lab File: BE094971.D  
 Acq: 11 Dec 2017 12:30

Tgt Ion	Ratio	Lower	Upper
228	100		
226	25.8	40.0	60.0#
229	20.2	40.0	60.0#





#31

Chrysene

Concen: 0.367 ng

RT: 21.92 min Scan# 1585

Delta R.T. -0.00 min

Lab File: BE094971.D

Acq: 11 Dec 2017 12:30

Instrument :

BNA\_E

ClientSampleId :

SSTDCCC0.4

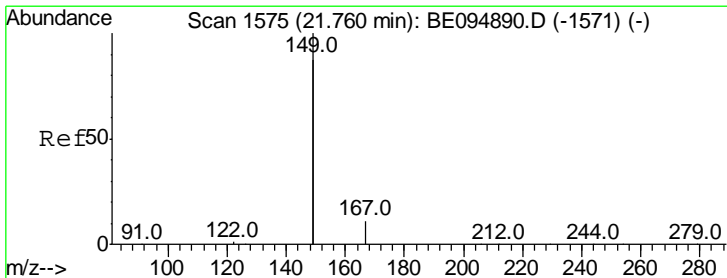
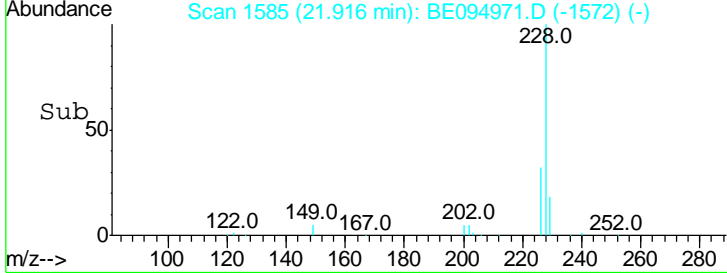
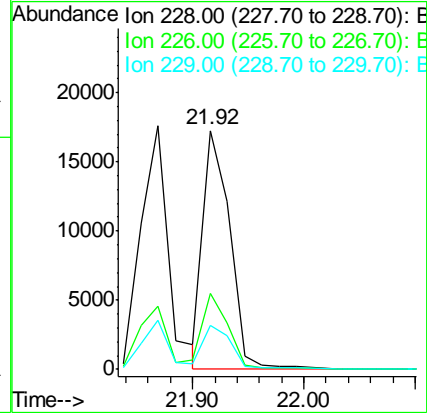
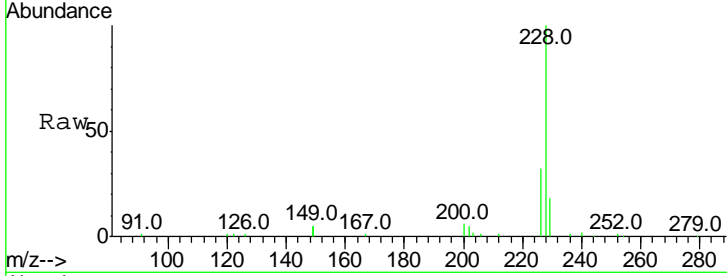
Tot Ion:228 Resp: 31255

Ion Ratio Lower Upper

228 100

226 31.8 40.0 60.0#

229 18.5 40.0 60.0#



#32

Bis(2-ethylhexyl)phthalate

Concen: 0.253 ng

RT: 21.74 min Scan# 1574

Delta R.T. -0.02 min

Lab File: BE094971.D

Acq: 11 Dec 2017 12:30

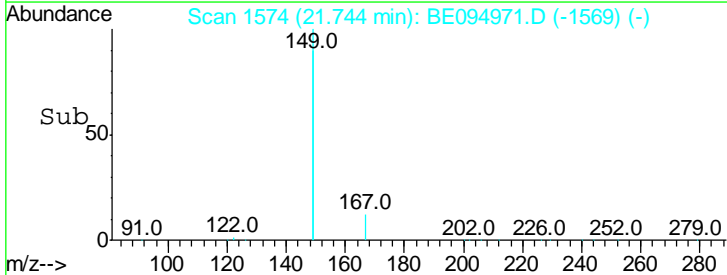
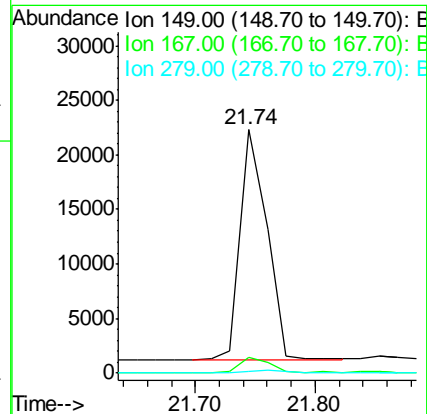
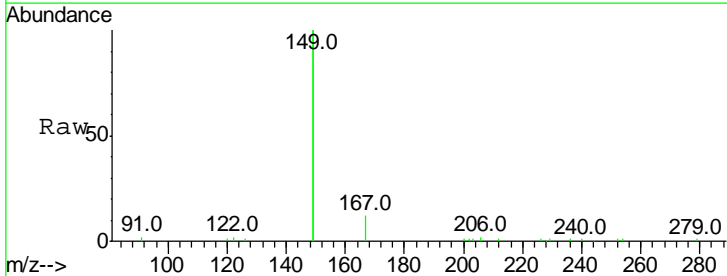
Tgt Ion:149 Resp: 32341

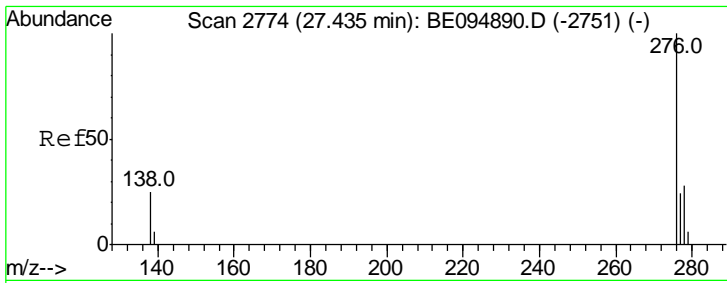
Ion Ratio Lower Upper

149 100

167 6.7 5.4 8.0

279 0.8 0.7 1.1

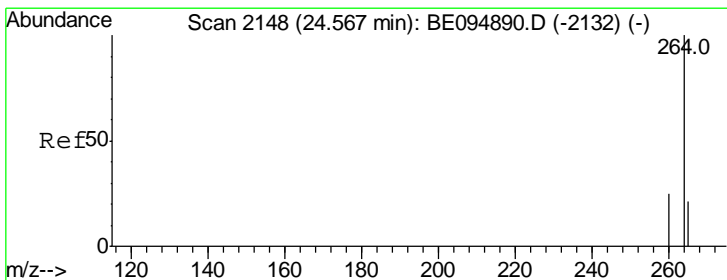
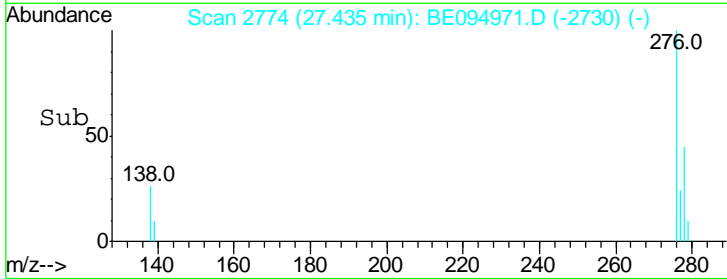
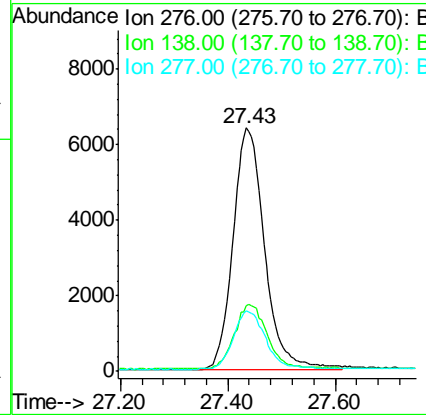
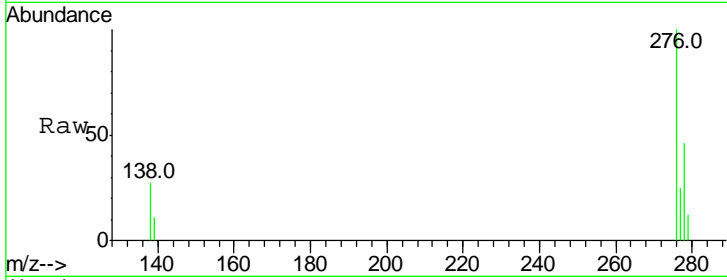




#33  
 Indeno(1,2,3-cd)pyrene  
 Concen: 0.373 ng  
 RT: 27.43 min Scan# 2774  
 Delta R.T. -0.00 min  
 Lab File: BE094971.D  
 Acq: 11 Dec 2017 12:30

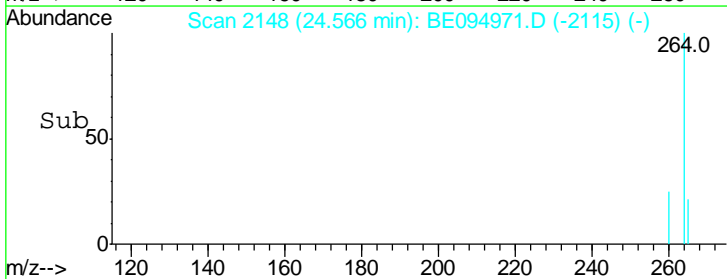
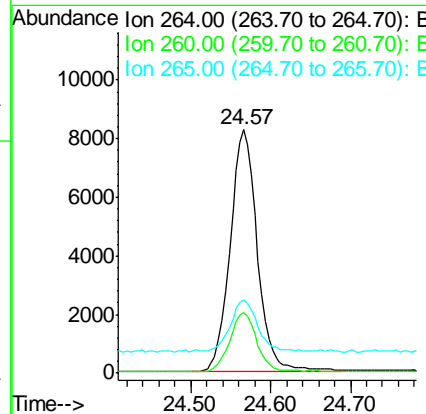
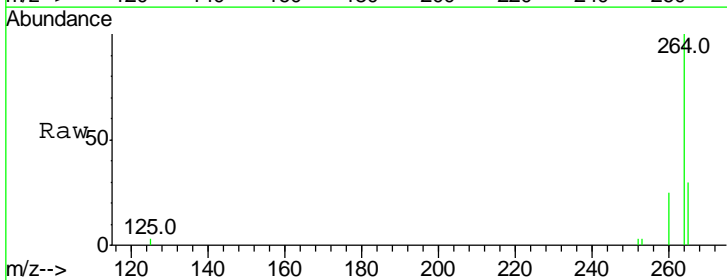
Instrument :  
 BNA\_E  
 ClientSampleId :  
 SSTDCCC0.4

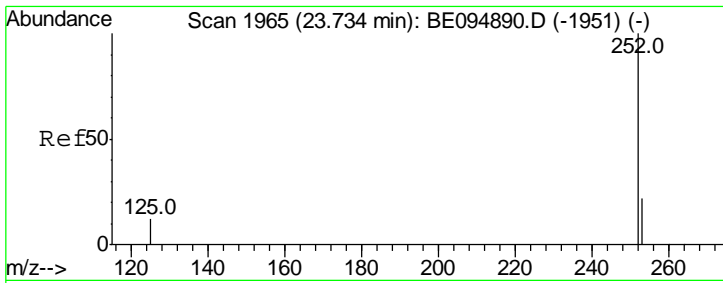
Tgt Ion	Resp	Lower	Upper
276	100		
138	28.0	22.5	33.7
277	24.8	19.9	29.9



#34  
 Perylene-d12  
 Concen: 0.400 ng  
 RT: 24.57 min Scan# 2148  
 Delta R.T. -0.00 min  
 Lab File: BE094971.D  
 Acq: 11 Dec 2017 12:30

Tgt Ion	Resp	Lower	Upper
264	100		
260	25.0	20.5	30.7
265	30.0	22.8	34.2

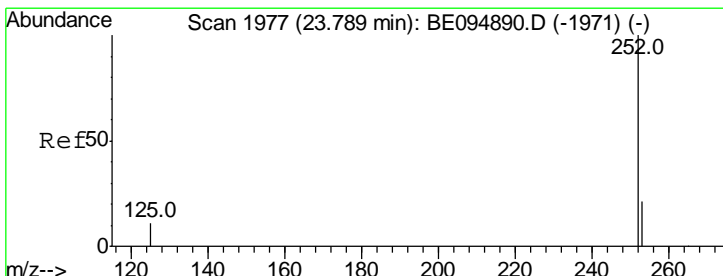
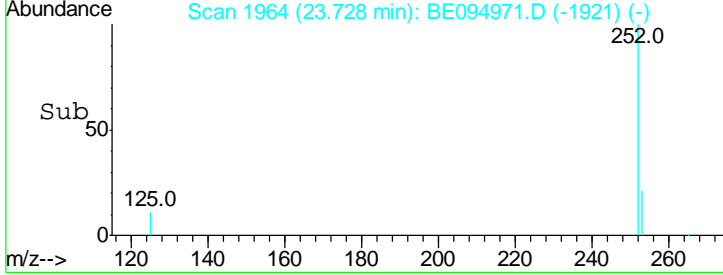
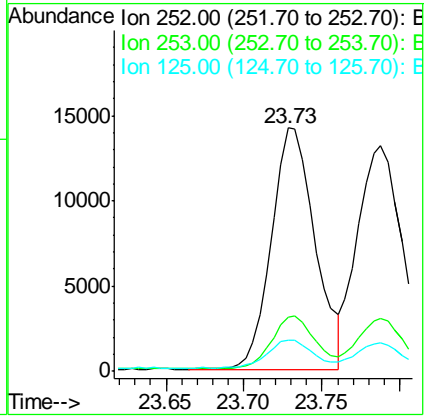
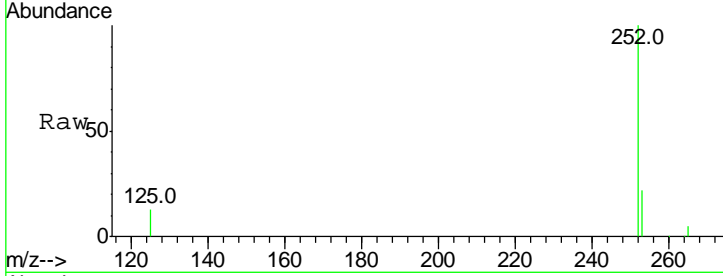




#35  
 Benzo(b)fluoranthene  
 Concen: 0.386 ng  
 RT: 23.73 min Scan# 1964  
 Delta R.T. -0.01 min  
 Lab File: BE094971.D  
 Acq: 11 Dec 2017 12:30

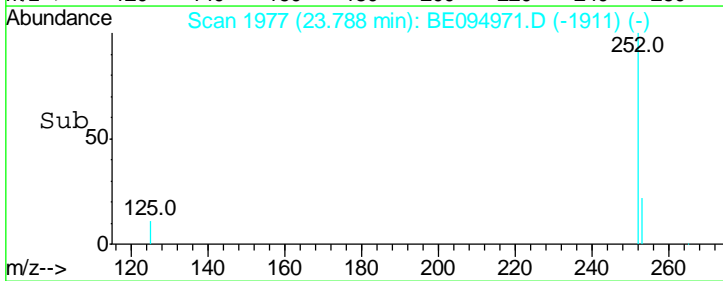
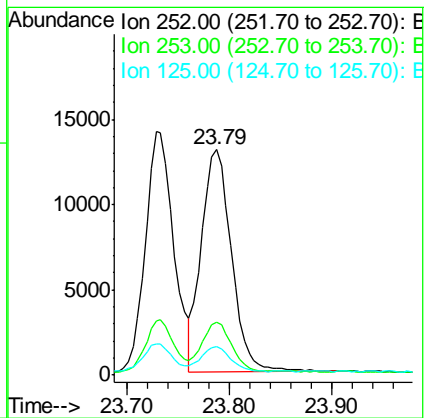
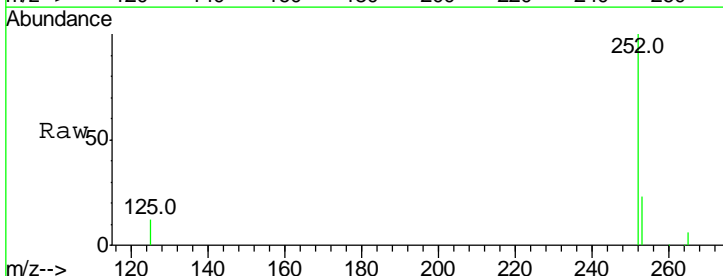
Instrument :  
 BNA\_E  
 ClientSampleId :  
 SSTDCCC0.4

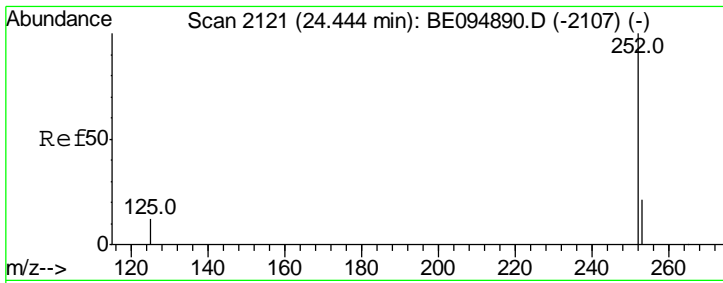
Tgt Ion	Resp	Lower	Upper
252	100		
253	22.2	48.0	72.0#
125	12.7	56.0	84.0#



#36  
 Benzo(k)fluoranthene  
 Concen: 0.368 ng  
 RT: 23.79 min Scan# 1977  
 Delta R.T. -0.00 min  
 Lab File: BE094971.D  
 Acq: 11 Dec 2017 12:30

Tgt Ion	Resp	Lower	Upper
252	100		
253	23.5	48.0	72.0#
125	12.4	56.0	84.0#

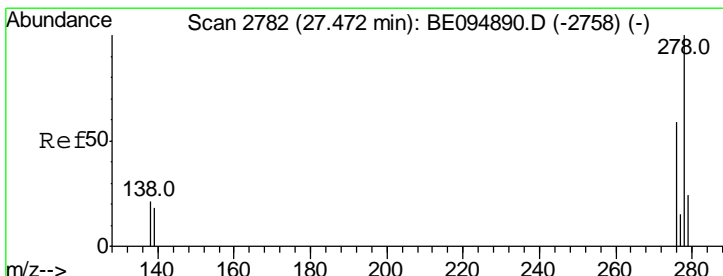
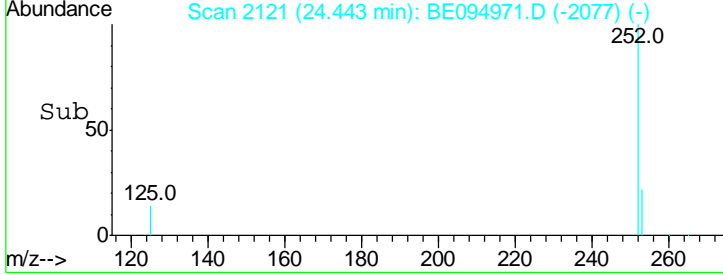
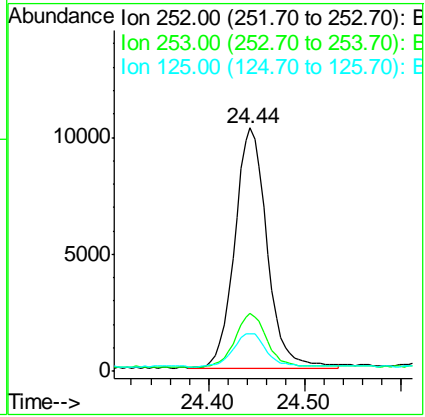
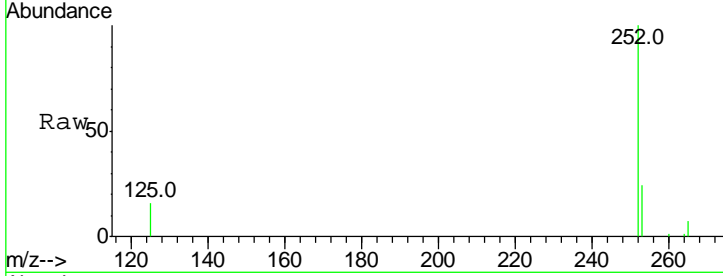




#37  
 Benzo(a)pyrene  
 Concen: 0.382 ng  
 RT: 24.44 min Scan# 2121  
 Delta R.T. -0.00 min  
 Lab File: BE094971.D  
 Acq: 11 Dec 2017 12:30

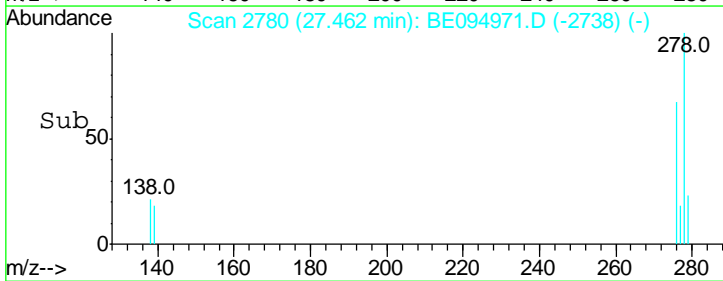
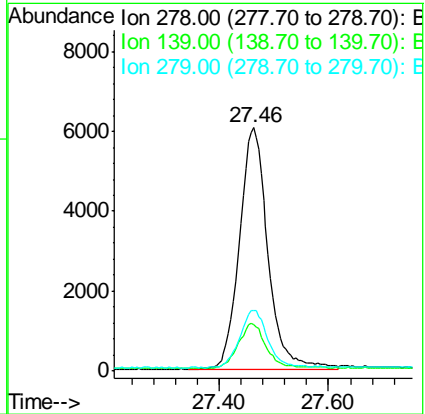
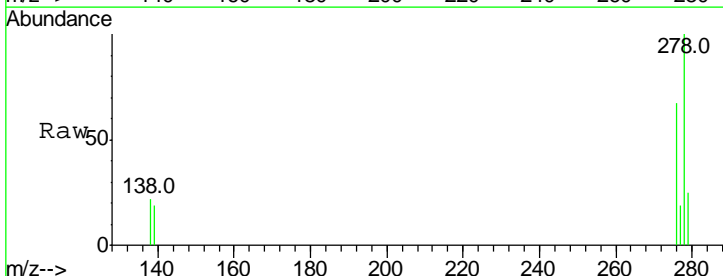
Instrument : BNA\_E  
 ClientSampled : SSTDCCC0.4

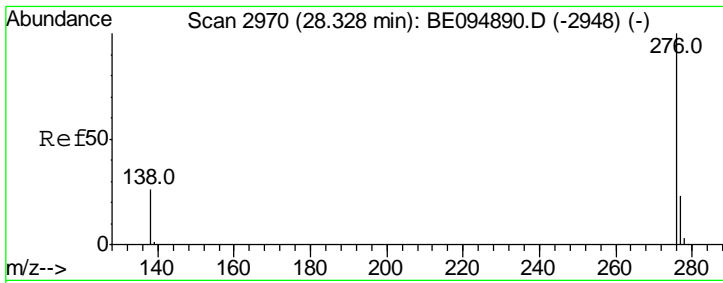
Tgt Ion	Resp	Lower	Upper
252	100		
253	23.9	52.0	78.0#
125	15.6	68.0	102.0#



#38  
 Dibenzo(a,h)anthracene  
 Concen: 0.378 ng  
 RT: 27.46 min Scan# 2780  
 Delta R.T. -0.01 min  
 Lab File: BE094971.D  
 Acq: 11 Dec 2017 12:30

Tgt Ion	Resp	Lower	Upper
278	100		
139	18.9	56.0	84.0#
279	24.7	52.0	78.0#





#39  
 Benzo(a,h,i)perylene  
 Concen: 0.381 ng  
 RT: 28.32 min Scan# 2968  
 Delta R.T. -0.01 min  
 Lab File: BE094971.D  
 Acq: 11 Dec 2017 12:30

Instrument :  
 BNA\_E  
 ClientSampled :  
 SSTDCCC0.4

Tot Ion: 276 Resp: 21933

Ion	Ratio	Lower	Upper
276	100		
277	23.6	52.0	78.0#
138	24.9	44.0	66.0#

