

Data Path : Z:\SVOASRV\HPCHEM1\BNA E\DATA\BE121319\  
 Data File : BE100906.D  
 Acq On : 14 Dec 2019 3:47  
 Operator : JU  
 Sample : K6251-16  
 Misc :  
 ALS Vial : 28 Sample Multiplier: 1

Instrument :  
 BNA\_E  
 ClientSampleId :  
 MW202D1-20191207

Quant Time: Dec 14 04:30:04 2019  
 Quant Method : Z:\SVOASRV\HPCHEM1\BNA E\METHODS\8270-SIM-BE120419.M  
 Quant Title : ASP BNA STANDARDS FOR 5 POINT CALIBRATION  
 QLast Update : Fri Dec 13 10:42:38 2019  
 Response via : Initial Calibration

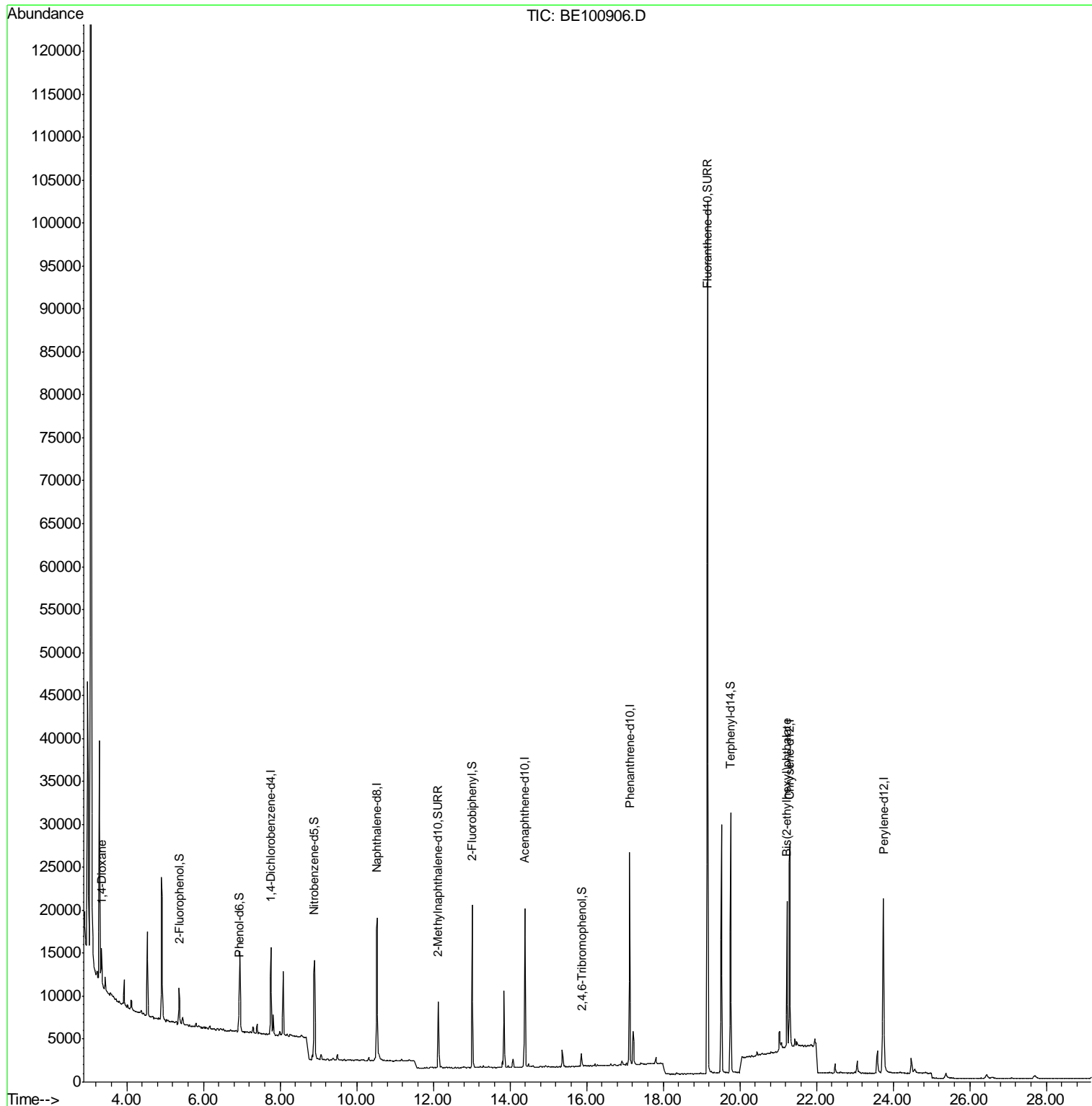
Internal Standards	R.T.	QIon	Response	Conc	Units	Dev(Min)
1) 1,4-Dichlorobenzene-d4	7.76	152	4571	0.40	ng	0.00
7) Naphthalene-d8	10.54	136	20849	0.40	ng	0.00
13) Acenaphthene-d10	14.38	164	12110	0.40	ng	0.00
19) Phenanthrene-d10	17.12	188	30575	0.40	ng	0.00
27) Chrysene-d12	21.31	240	27008	0.40	ng	0.00
34) Perylene-d12	23.75	264	30800	0.40	ng	0.00
System Monitoring Compounds						
4) 2-Fluorophenol	5.36	112	2083	0.19	ng	0.00
5) Phenol-d6	6.93	99	1917	0.12	ng	0.00
8) Nitrobenzene-d5	8.90	82	5240	0.53	ng	0.00
11) 2-Methylnaphthalene-d10	12.12	152	11993	0.40	ng	-0.01
14) 2,4,6-Tribromophenol	15.88	330	913	0.68	ng	0.00
15) 2-Fluorobiphenyl	13.02	172	16458	0.34	ng	0.00
25) Fluoranthene-d10	19.16	212	137715	0.38	ng	0.00
29) Terphenyl-d14	19.76	244	26203	0.41	ng	0.00
Target Compounds						
2) 1,4-Dioxane	3.34	88	2899	0.348	ng	# 56
32) Bis(2-ethylhexyl)phthalate	21.23	149	17967	0.314	ng	# 97

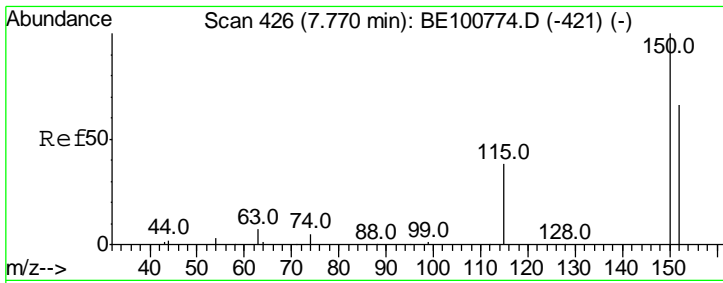
(#) = qualifier out of range (m) = manual integration (+) = signals summed

Data Path : Z:\SVOASRV\HPCHEM1\BNA E\DATA\BE121319\  
Data File : BE100906.D  
Acq On : 14 Dec 2019 3:47  
Operator : JU  
Sample : K6251-16  
Misc :  
ALS Vial : 28 Sample Multiplier: 1

Instrument :  
BNA\_E  
ClientSampleId :  
MW202D1-20191207

Quant Time: Dec 14 04:30:04 2019  
Quant Method : Z:\SVOASRV\HPCHEM1\BNA E\METHODS\8270-SIM-BE120419.M  
Quant Title : ASP BNA STANDARDS FOR 5 POINT CALIBRATION  
QLast Update : Fri Dec 13 10:42:38 2019  
Response via : Initial Calibration

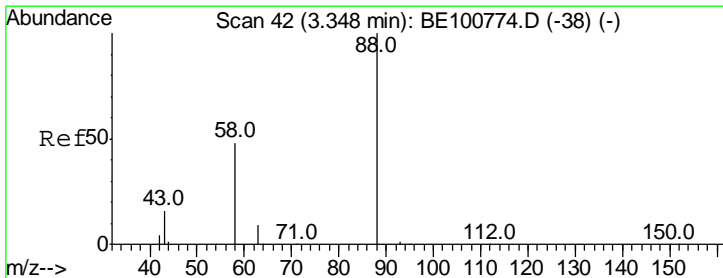
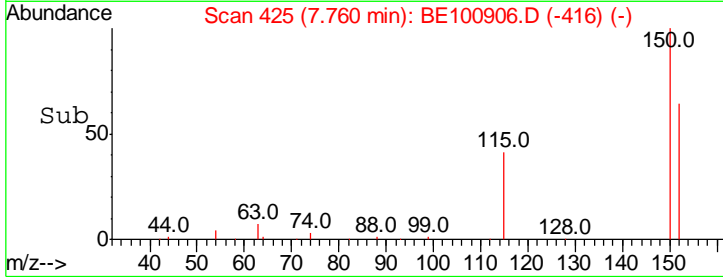
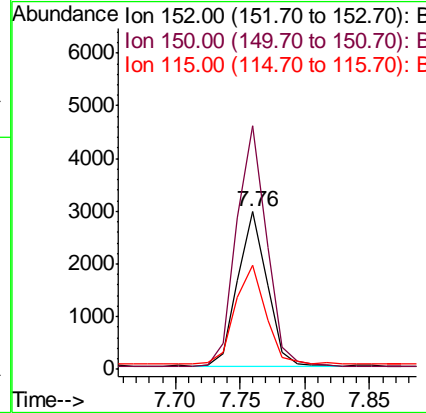
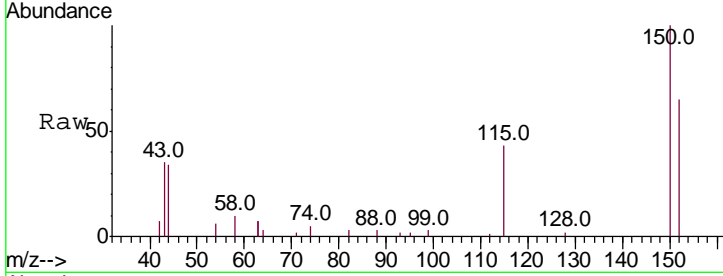




#1  
 1,4-Dichlorobenzene-d4  
 Concen: 0.400 ng  
 RT: 7.76 min Scan# 425  
 Delta R.T. 0.00 min  
 Lab File: BE100906.D  
 Acq: 14 Dec 2019 3:47

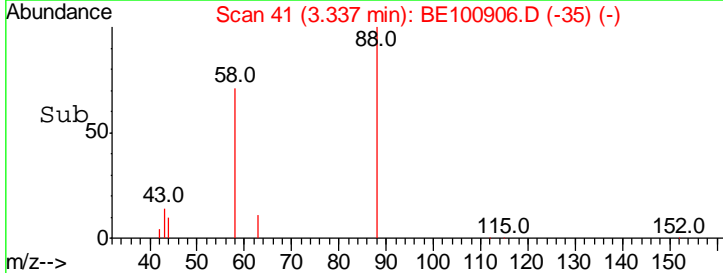
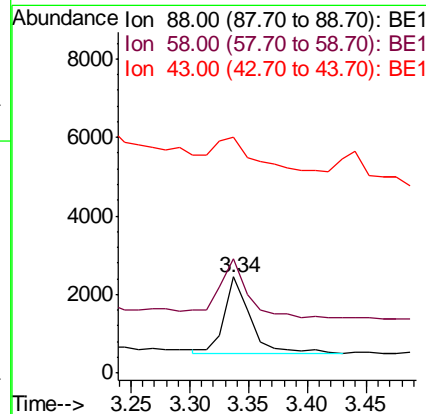
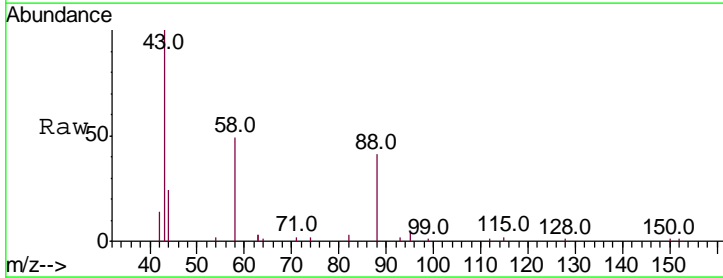
Instrument :  
 BNA\_E  
 ClientSampleId :  
 MW202D1-20191207

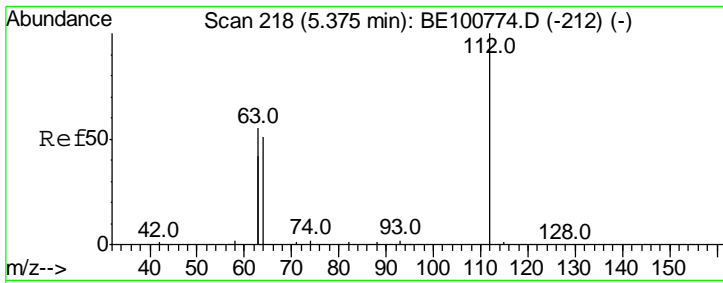
Tgt Ion	Resp	Lower	Upper
152	100		
150	154.5	125.5	188.3
115	66.4	55.7	83.5



#2  
 1,4-Dioxane  
 Concen: 0.348 ng  
 RT: 3.34 min Scan# 41  
 Delta R.T. 0.00 min  
 Lab File: BE100906.D  
 Acq: 14 Dec 2019 3:47

Tgt Ion	Resp	Lower	Upper
88	100		
58	91.8	52.3	78.5#
43	66.3	23.5	35.3#

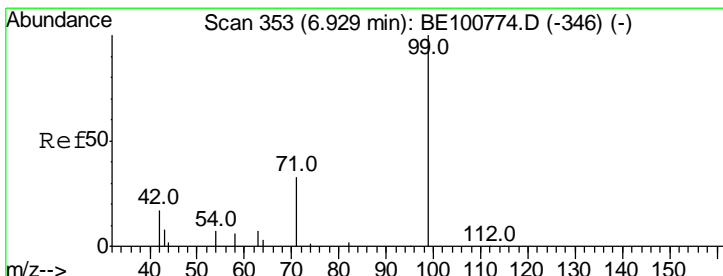
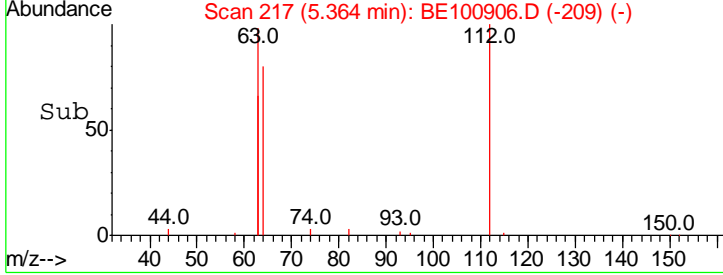
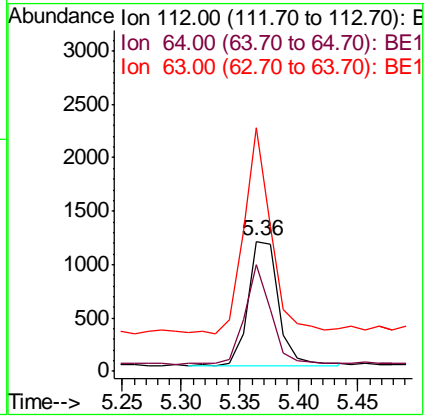
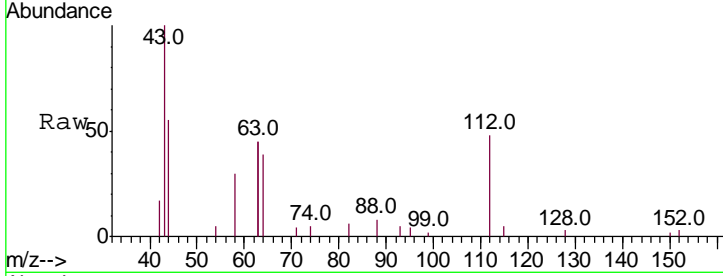




#4  
 2-Fluorophenol  
 Concen: 0.192 ng  
 RT: 5.36 min Scan# 217  
 Delta R.T. -0.01 min  
 Lab File: BE100906.D  
 Acq: 14 Dec 2019 3:47

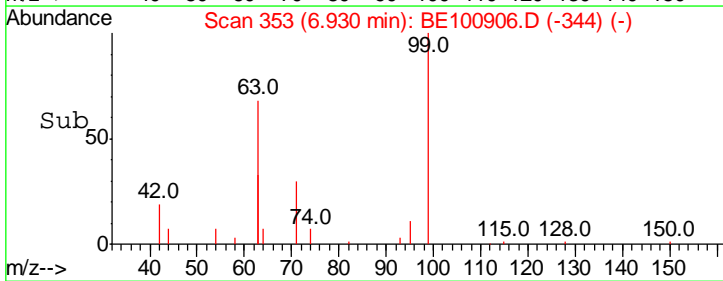
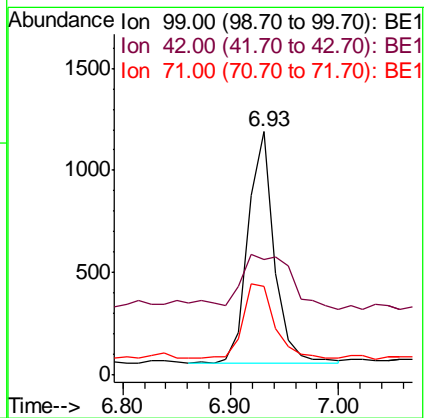
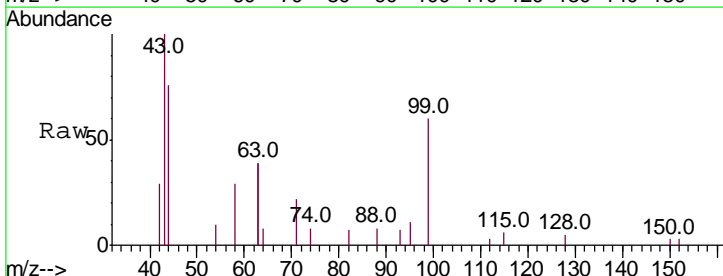
**Instrument :**  
 BNA\_E  
**ClientSampleId :**  
 MW202D1-20191207

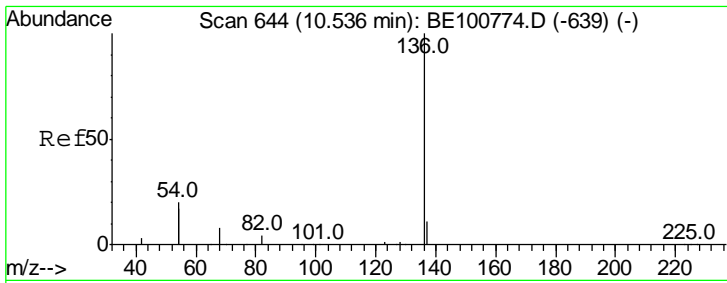
Tgt Ion	Resp	Lower	Upper
112	100		
64	70.2	54.5	81.7
63	144.3	116.1	174.1



#5  
 Phenol-d6  
 Concen: 0.117 ng  
 RT: 6.93 min Scan# 353  
 Delta R.T. 0.00 min  
 Lab File: BE100906.D  
 Acq: 14 Dec 2019 3:47

Tgt Ion	Resp	Lower	Upper
99	100		
42	44.6	18.2	27.2#
71	39.1	29.1	43.7

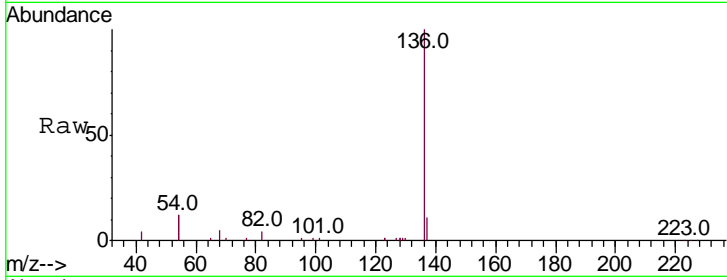




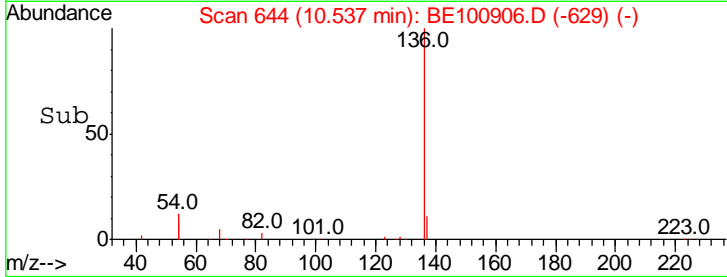
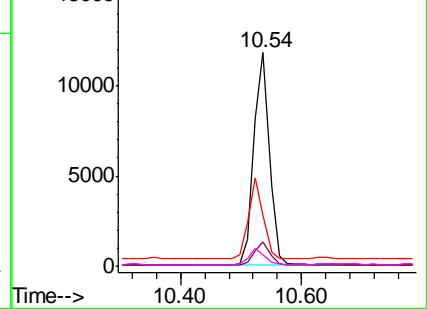
#7  
 Naphthalene-d8  
 Concen: 0.400 ng  
 RT: 10.54 min Scan# 644  
 Delta R.T. -0.00 min  
 Lab File: BE100906.D  
 Acq: 14 Dec 2019 3:47

**Instrument :**  
 BNA\_E  
**ClientSampled :**  
 MW202D1-20191207

Tgt Ion	Resp	Lower	Upper
136	100		
137	11.2	9.1	13.7
54	24.0	18.9	28.3
68	5.4	4.6	6.8

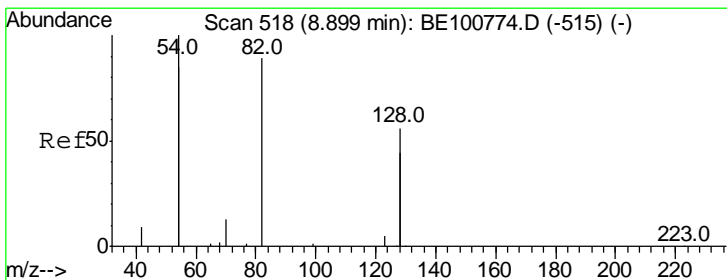


Abundance  
 Ion 136.00 (135.70 to 136.70): E  
 Ion 137.00 (136.70 to 137.70): E  
 Ion 54.00 (53.70 to 54.70): BE1  
 Ion 68.00 (67.70 to 68.70): BE1

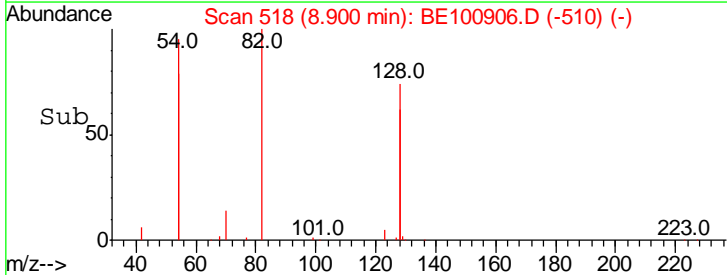
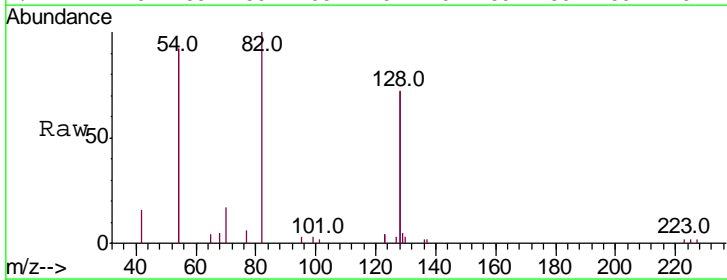
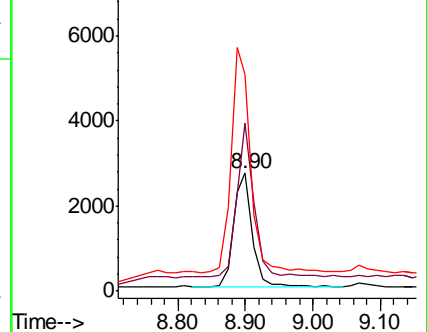


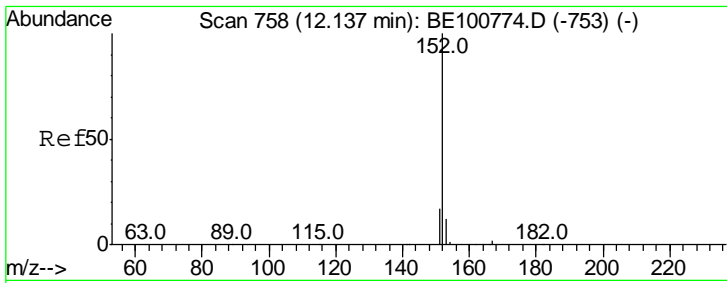
#8  
 Nitrobenzene-d5  
 Concen: 0.528 ng  
 RT: 8.90 min Scan# 518  
 Delta R.T. -0.00 min  
 Lab File: BE100906.D  
 Acq: 14 Dec 2019 3:47

Tgt Ion	Resp	Lower	Upper
82	100		
128	143.2	113.5	170.3
54	183.8	138.9	208.3



Abundance  
 Ion 82.00 (81.70 to 82.70): BE1  
 Ion 128.00 (127.70 to 128.70): E  
 Ion 54.00 (53.70 to 54.70): BE1



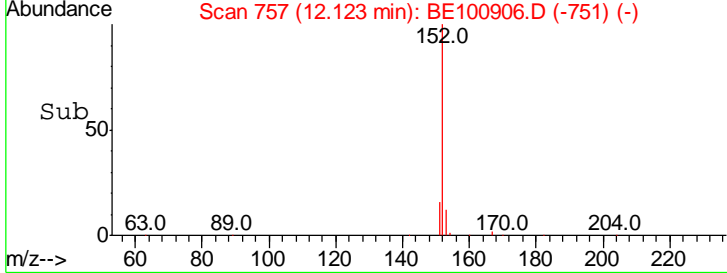
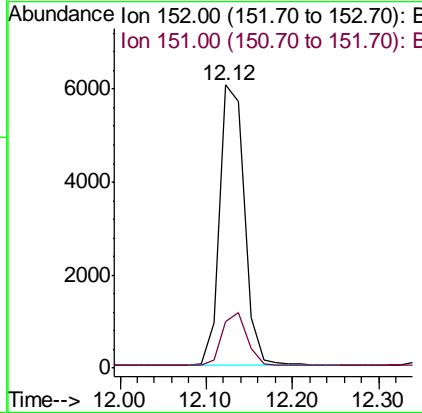
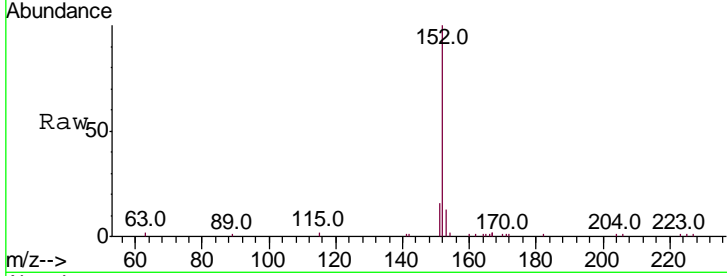


#11  
 2-Methylnaphthalene-d10  
 Concen: 0.397 ng  
 RT: 12.12 min Scan# 757  
 Delta R.T. -0.01 min  
 Lab File: BE100906.D  
 Acq: 14 Dec 2019 3:47

**Instrument :**  
 BNA\_E  
**ClientSampled :**  
 MW202D1-20191207

Tot Ion:152 Resp: 11993

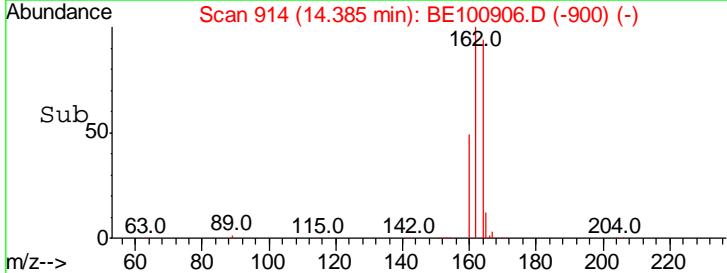
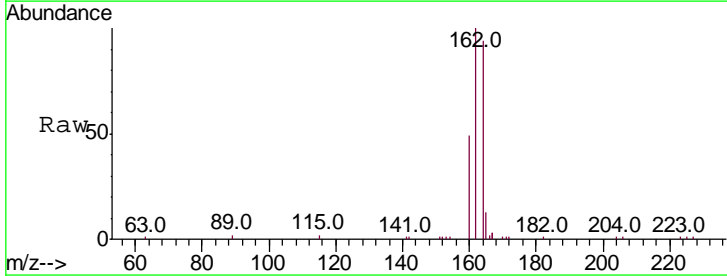
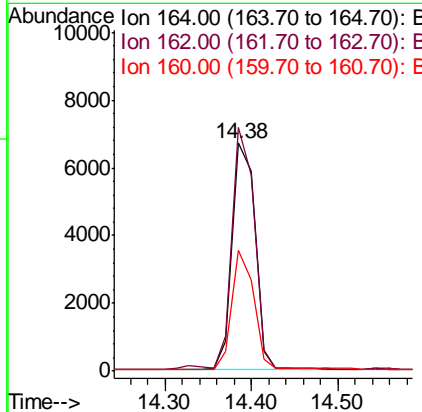
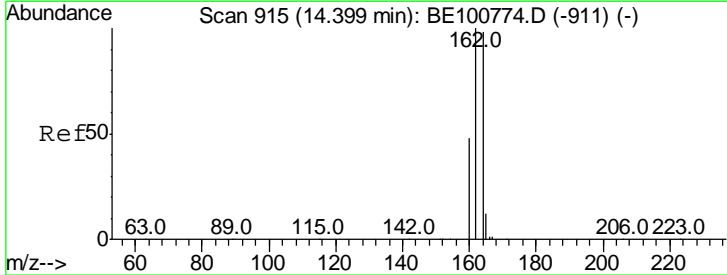
Ion	Ratio	Lower	Upper
152	100		
151	19.0	15.1	22.7

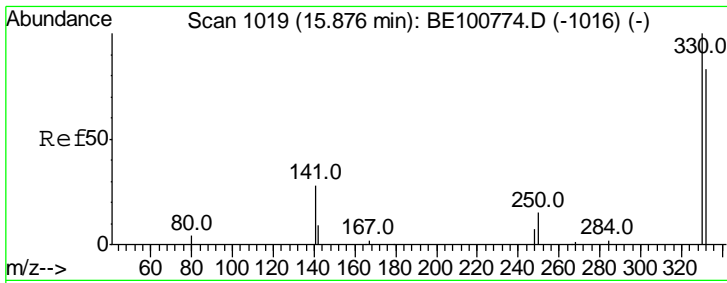


#13  
 Acenaphthene-d10  
 Concen: 0.400 ng  
 RT: 14.38 min Scan# 914  
 Delta R.T. 0.00 min  
 Lab File: BE100906.D  
 Acq: 14 Dec 2019 3:47

Tgt Ion:164 Resp: 12110

Ion	Ratio	Lower	Upper
164	100		
162	106.8	86.0	129.0
160	52.8	42.3	63.5

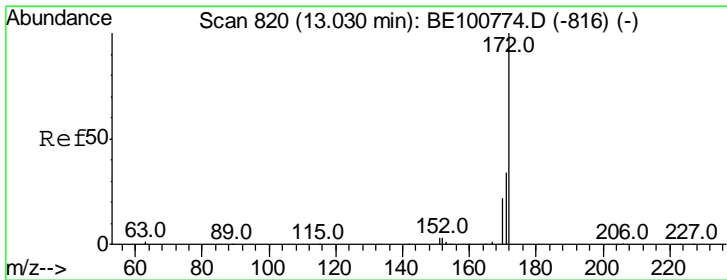
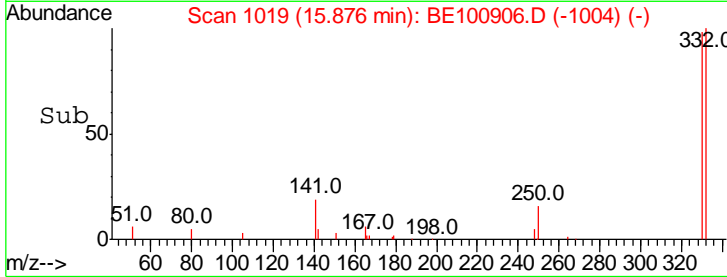
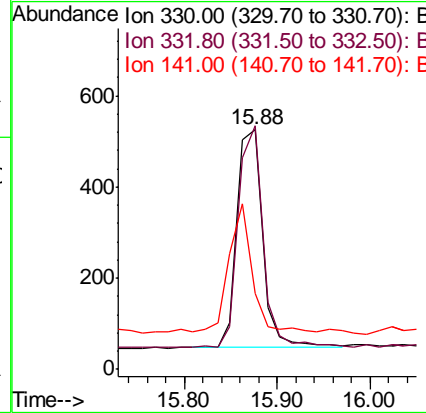
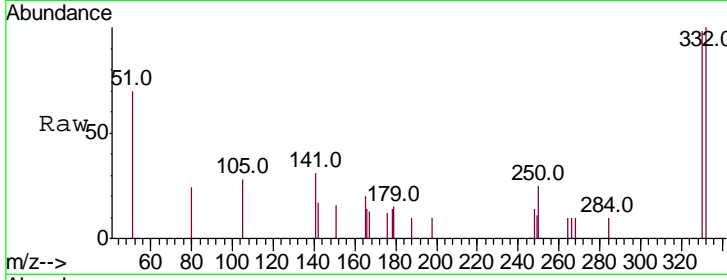




#14  
 2,4,6-Tribromophenol  
 Concen: 0.678 ng  
 RT: 15.88 min Scan# 1019  
 Delta R.T. 0.00 min  
 Lab File: BE100906.D  
 Acq: 14 Dec 2019 3:47

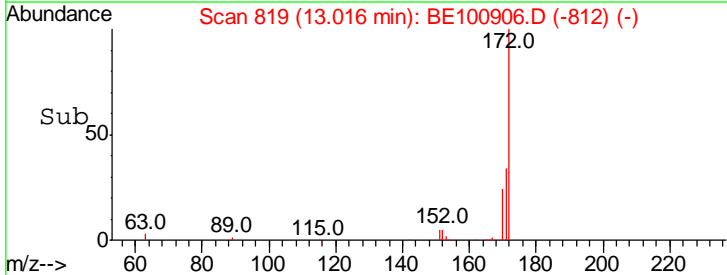
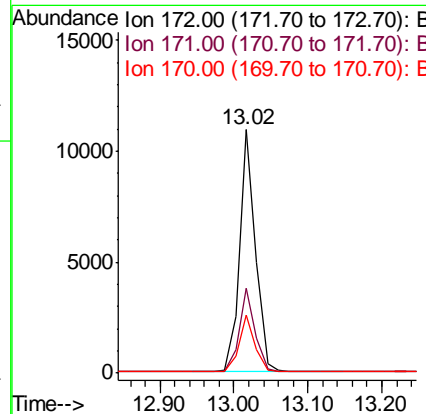
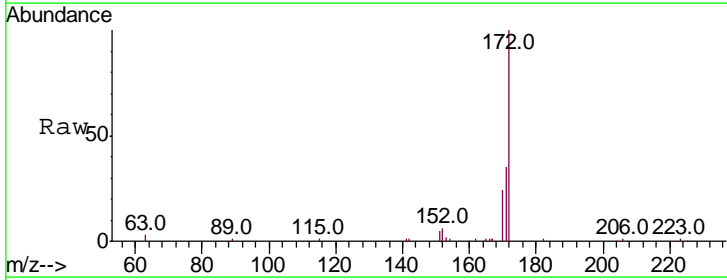
Instrument :  
 BNA\_E  
 ClientSampleId :  
 MW202D1-20191207

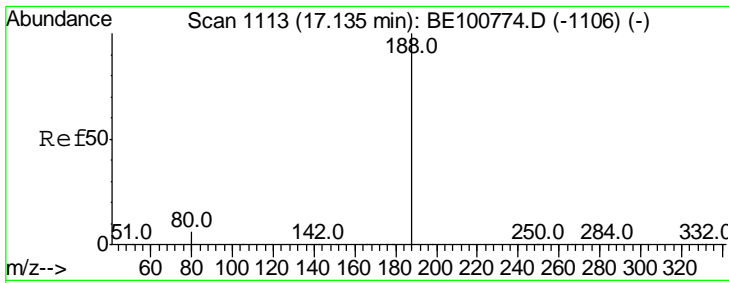
Tgt Ion	Resp	Lower	Upper
330	100		
332	98.1	74.1	111.1
141	58.8	46.7	70.1



#15  
 2-Fluorobiphenyl  
 Concen: 0.343 ng  
 RT: 13.02 min Scan# 819  
 Delta R.T. 0.00 min  
 Lab File: BE100906.D  
 Acq: 14 Dec 2019 3:47

Tgt Ion	Resp	Lower	Upper
172	100		
171	34.7	28.2	42.4
170	24.1	19.4	29.0

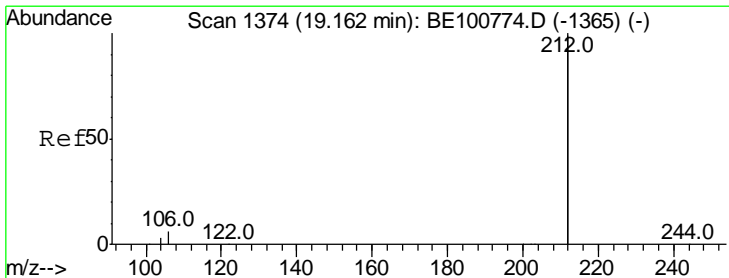
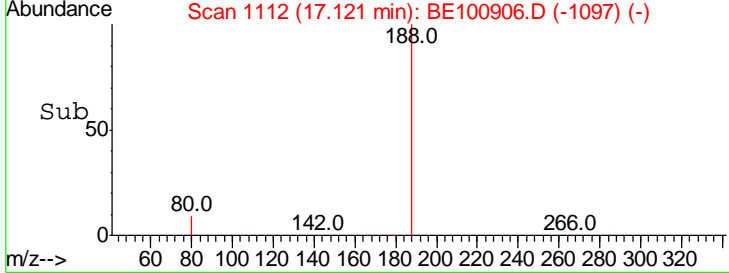
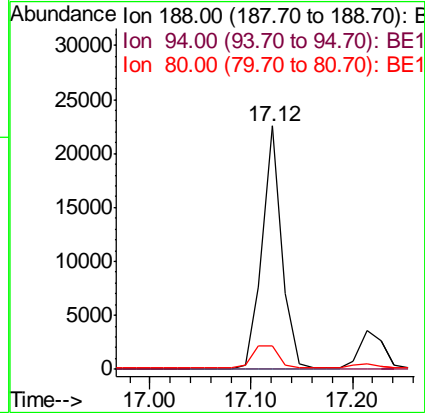
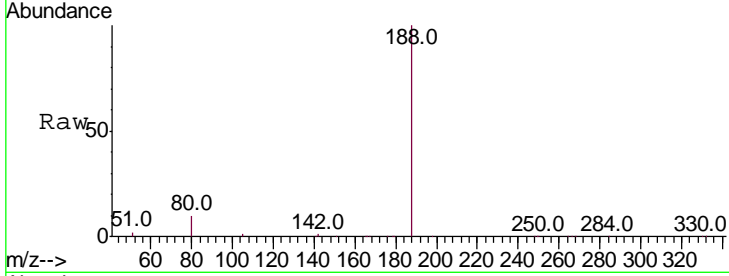




#19  
 Phenanthrene-d10  
 Concen: 0.400 ng  
 RT: 17.12 min Scan# 1112  
 Delta R.T. 0.00 min  
 Lab File: BE100906.D  
 Acq: 14 Dec 2019 3:47

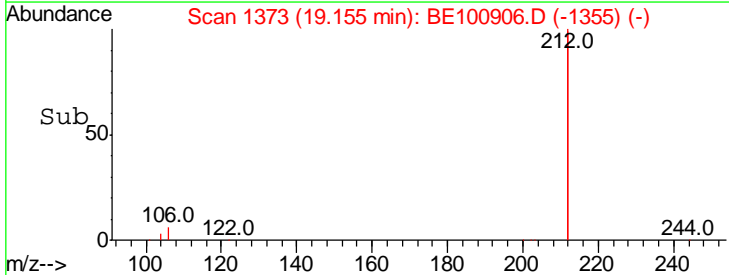
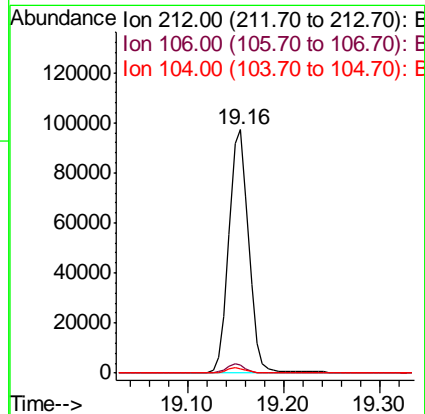
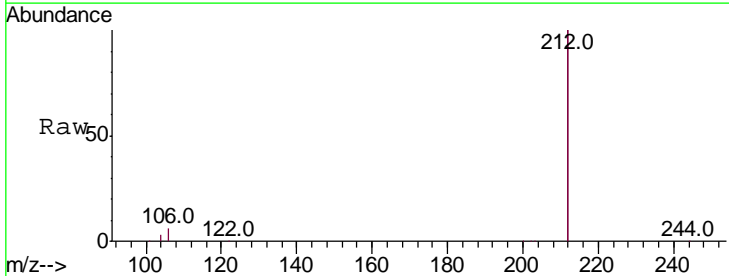
Instrument : BNA\_E  
 ClientSampleId : MW202D1-20191207

Tgt Ion	Resp	Lower	Upper
188	100		
94	0.0	0.0	0.0
80	9.8	7.9	11.9

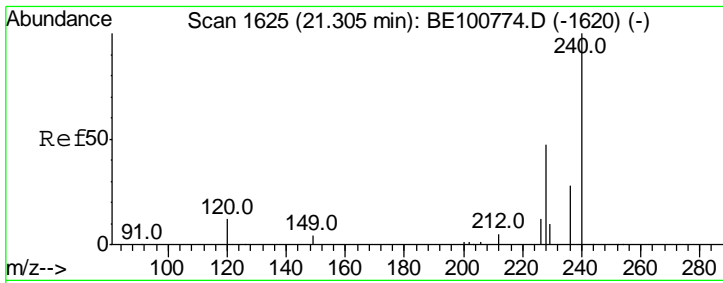


#25  
 Fluoranthene-d10  
 Concen: 0.381 ng  
 RT: 19.16 min Scan# 1373  
 Delta R.T. 0.01 min  
 Lab File: BE100906.D  
 Acq: 14 Dec 2019 3:47

Tgt Ion	Resp	Lower	Upper
212	100		
106	3.4	2.6	4.0
104	1.9	1.4	2.2



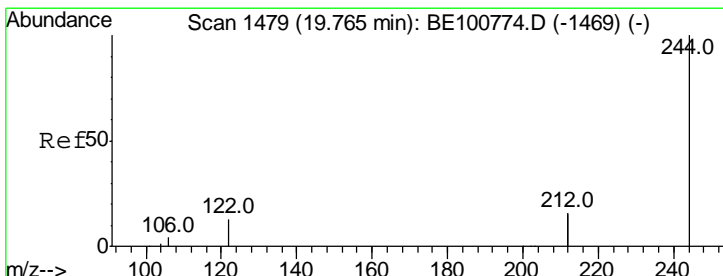
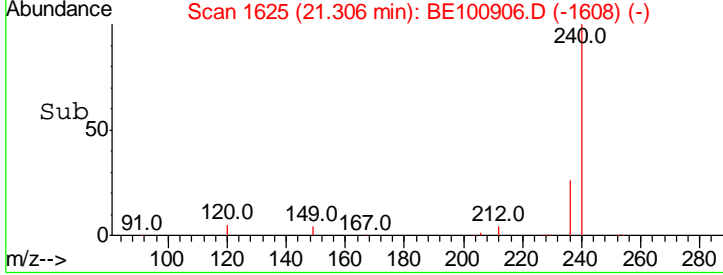
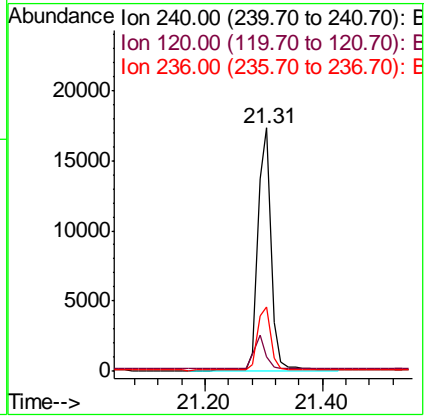
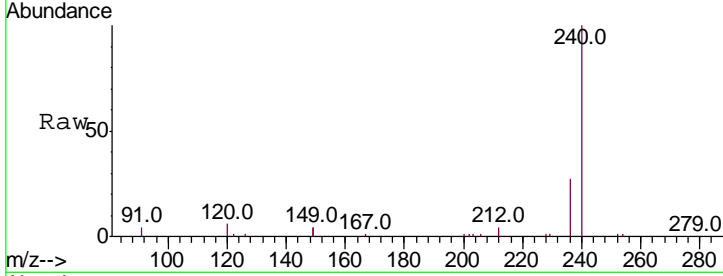




#27  
 Chrysene-d12  
 Concen: 0.400 ng  
 RT: 21.31 min Scan# 1625  
 Delta R.T. -0.00 min  
 Lab File: BE100906.D  
 Acq: 14 Dec 2019 3:47

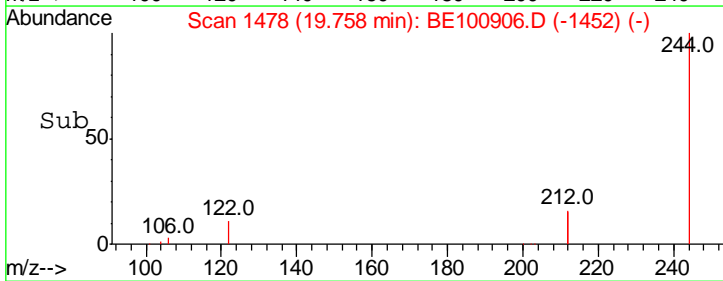
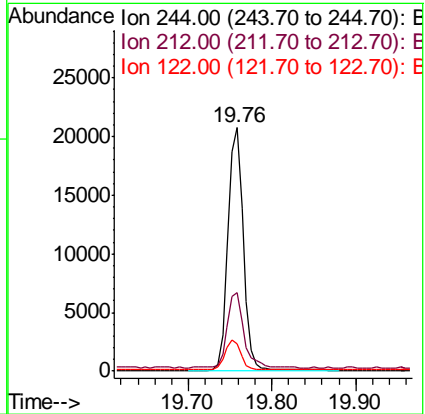
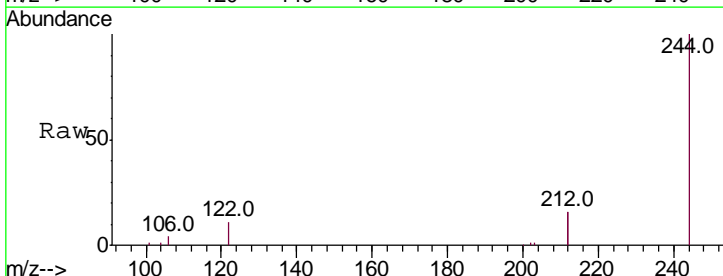
Instrument :  
 BNA\_E  
 ClientSampleId :  
 MW202D1-20191207

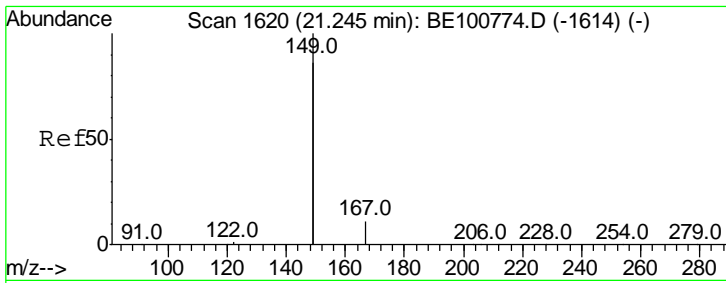
Tgt Ion	Resp	Lower	Upper
240	100		
120	5.8	4.0	6.0
236	26.6	21.6	32.4



#29  
 Terphenyl-d14  
 Concen: 0.405 ng  
 RT: 19.76 min Scan# 1478  
 Delta R.T. -0.00 min  
 Lab File: BE100906.D  
 Acq: 14 Dec 2019 3:47

Tgt Ion	Resp	Lower	Upper
244	100		
212	32.2	25.2	37.8
122	11.2	8.9	13.3

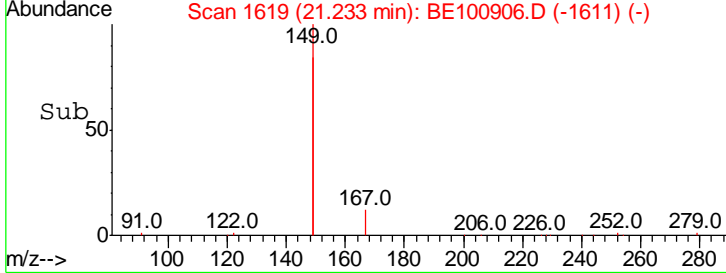
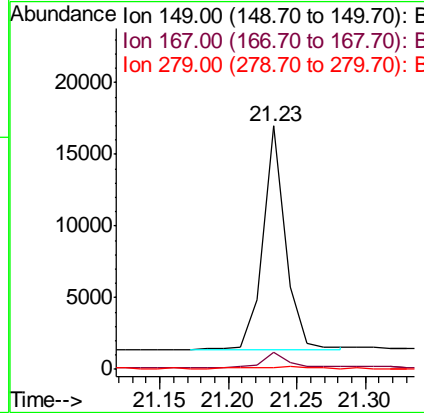
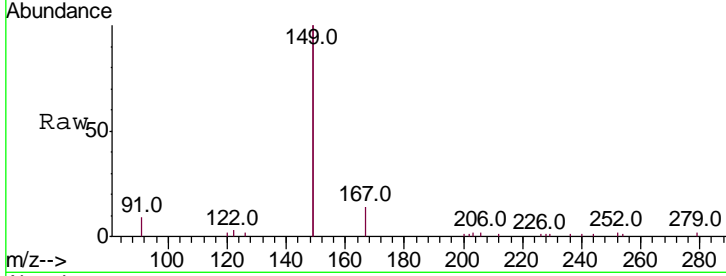




#32  
 Bis(2-ethylhexyl)phthalate  
 Concen: 0.314 ng  
 RT: 21.23 min Scan# 1619  
 Delta R.T. -0.00 min  
 Lab File: BE100906.D  
 Acq: 14 Dec 2019 3:47

Instrument :  
 BNA\_E  
 ClientSampled :  
 MW202D1-20191207

Tgt Ion	Resp	Lower	Upper
149	100		
167	7.2	5.0	7.4
279	1.1	0.6	1.0#



#34  
 Perylene-d12  
 Concen: 0.400 ng  
 RT: 23.75 min Scan# 2165  
 Delta R.T. 0.00 min  
 Lab File: BE100906.D  
 Acq: 14 Dec 2019 3:47

Tgt Ion	Resp	Lower	Upper
264	100		
260	23.9	19.4	29.0
265	24.0	20.1	30.1

