

Data Path : Z:\SVOASRV\HPCHEM1\BNA E\DATA\BE121518\
 Data File : BE098483.D
 Acq On : 15 Dec 2018 21:51
 Operator : SJ/JU
 Sample : PB115688BS
 Misc :
 ALS Vial : 17 Sample Multiplier: 1

Instrument :
 BNA_E
ClientSampled :
 PB115688BS

Manual Integrations
APPROVED
 Sohil
 12/16/2018 2:03:28 PM

Quant Time: Dec 16 02:56:48 2018
 Quant Method : Z:\SVOASRV\HPCHEM1\BNA E\METHODS\8270-SIM-BE121018.M
 Quant Title : ASP BNA STANDARDS FOR 5 POINT CALIBRATION
 QLast Update : Mon Dec 10 14:59:55 2018
 Response via : Initial Calibration

Internal Standards	R.T.	QIon	Response	Conc	Units	Dev(Min)
1) 1,4-Dichlorobenzene-d4	7.86	152	784	0.40	ng	0.00
7) Naphthalene-d8	10.65	136	3066	0.40	ng	-0.01
13) Acenaphthene-d10	14.51	164	1811	0.40	ng	-0.01
19) Phenanthrene-d10	17.27	188	5138	0.40	ng	-0.01
27) Chrysene-d12	21.46	240	6585	0.40	ng	0.00
34) Perylene-d12	24.00	264	6096	0.40	ng	-0.01

System Monitoring Compounds	R.T.	QIon	Response	Conc	Units	Dev(Min)
4) 2-Fluorophenol	5.47	112	472	0.26	ng	0.02
5) Phenol-d6	7.06	99	603	0.23	ng	0.00
8) Nitrobenzene-d5	9.03	82	549	0.20	ng	0.01
11) 2-Methylnaphthalene-d10	12.27	152	1274	0.26	ng	0.00
14) 2,4,6-Tribromophenol	16.03	330	154	0.23	ng	0.00
15) 2-Fluorobiphenyl	13.15	172	1808	0.24	ng	0.00
25) Fluoranthene-d10	19.30	212	16576	0.25	ng	0.00
29) Terphenyl-d14	19.90	244	2895	0.18	ng	0.00

Target Compounds	R.T.	QIon	Response	Conc	Units	Qvalue
2) 1,4-Dioxane	3.37	88	406	0.299	ng	# 77
3) n-Nitrosodimethylamine	3.70	42	193	0.158	ng	# 100
6) bis(2-Chloroethyl)ether	7.30	93	410	0.166	ng	93
9) Naphthalene	10.71	128	7275	0.236	ng	# 97
10) Hexachlorobutadiene	10.99	225	481	0.245	ng	96
12) 2-Methylnaphthalene	12.34	142	1115	0.222	ng	# 92
16) Acenaphthylene	14.24	152	2074	0.244	ng	98
17) Acenaphthene	14.59	154	1130	0.222	ng	97
18) Fluorene	15.57	166	1576	0.231	ng	96
20) 4-Bromophenyl-phenylether	16.46	248	499	0.180	ng	94
21) Hexachlorobenzene	16.58	284	617	0.208	ng	# 91
22) Pentachlorophenol	16.95	266	59	0.144	ng	# 78
23) Phenanthrene	17.31	178	2857	0.229	ng	100
24) Anthracene	17.41	178	2152	0.193	ng	98
26) Fluoranthene	19.33	202	4113	0.249	ng	98
28) Pyrene	19.69	202	4117	0.199	ng	100
30) Benzo(a)anthracene	21.44	228	4094	0.218	ng	98
31) Chrysene	21.50	228	4399	0.224	ng	98
32) Bis(2-ethylhexyl)phthalate	21.35	149	5758	0.151	ng	100
33) Indeno(1,2,3-cd)pyrene	26.70	276	4358	0.223	ng	97
35) Benzo(b)fluoranthene	23.22	252	4325m	0.259	ng	
36) Benzo(k)fluoranthene	23.27	252	4895	0.252	ng	97
37) Benzo(a)pyrene	23.89	252	4310	0.251	ng	# 88
38) Dibenzo(a,h)anthracene	26.72	278	3162	0.195	ng	# 92
39) Benzo(g,h,i)perylene	27.51	276	3598	0.220	ng	97

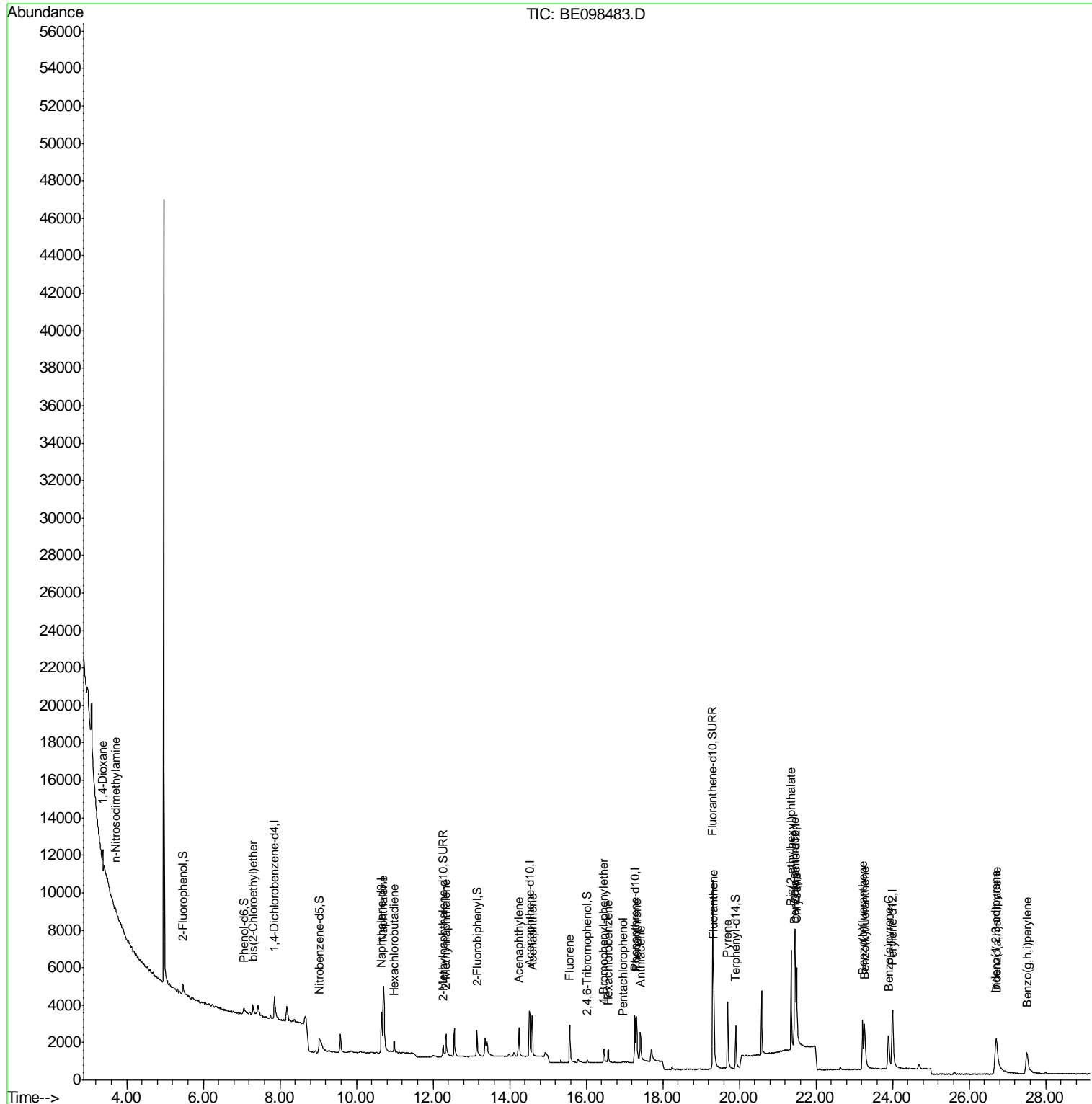
(#) = qualifier out of range (m) = manual integration (+) = signals summed

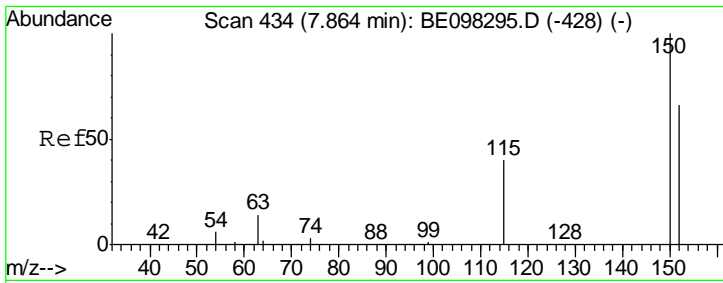
Data Path : Z:\SVOASRV\HPCHEM1\BNA E\DATA\BE121518\
 Data File : BE098483.D
 Acq On : 15 Dec 2018 21:51
 Operator : SJ/JU
 Sample : PB115688BS
 Misc :
 ALS Vial : 17 Sample Multiplier: 1

Instrument :
 BNA_E
 ClientSampled :
 PB115688BS

Manual Integrations
 APPROVED
 Sohil
 12/16/2018 2:03:28 PM

Quant Time: Dec 16 02:56:48 2018
 Quant Method : Z:\SVOASRV\HPCHEM1\BNA E\METHODS\8270-SIM-BE121018.M
 Quant Title : ASP BNA STANDARDS FOR 5 POINT CALIBRATION
 QLast Update : Mon Dec 10 14:59:55 2018
 Response via : Initial Calibration





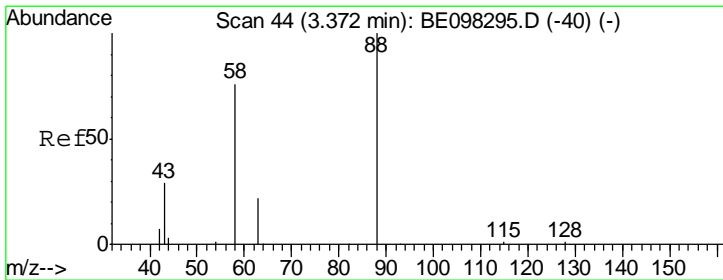
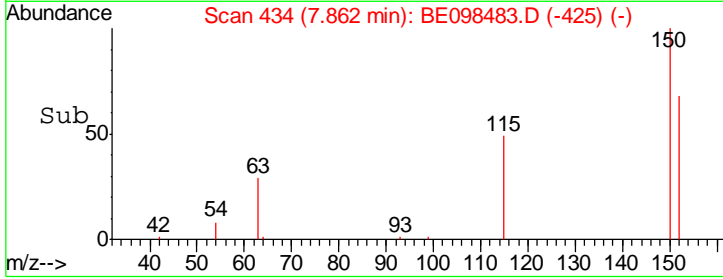
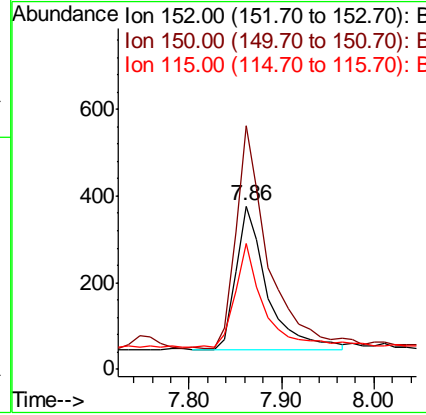
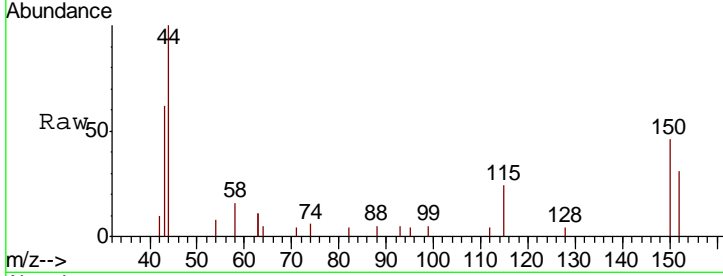
#1
 1,4-Dichlorobenzene-d4
 Concen: 0.400 ng
 RT: 7.86 min Scan# 434
 Delta R.T. -0.00 min
 Lab File: BE098483.D
 Acq: 15 Dec 2018 21:51

Instrument :
 BNA_E
 ClientSampled :
 PB115688BS

Tgt Ion	Resp	Lower	Upper
152	784		
150	149.1	124.2	186.4
115	77.2	53.9	80.9

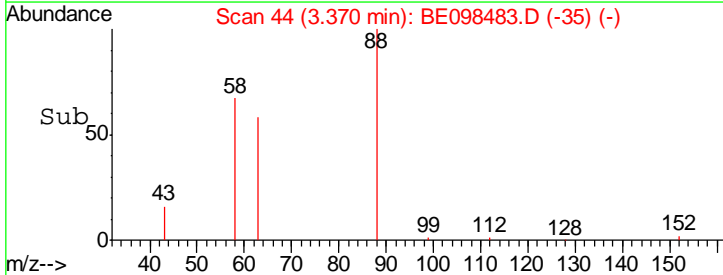
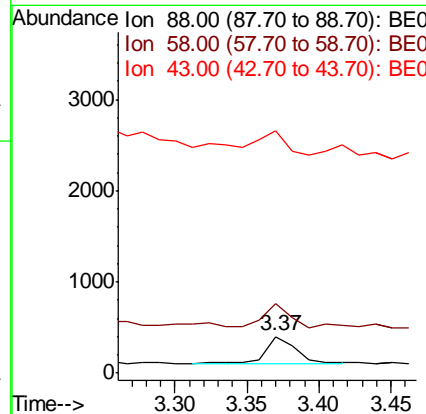
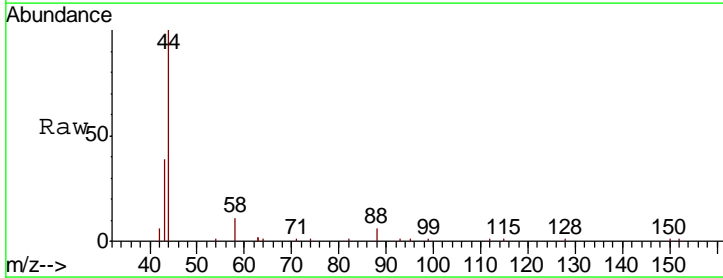
Manual Integrations
 APPROVED

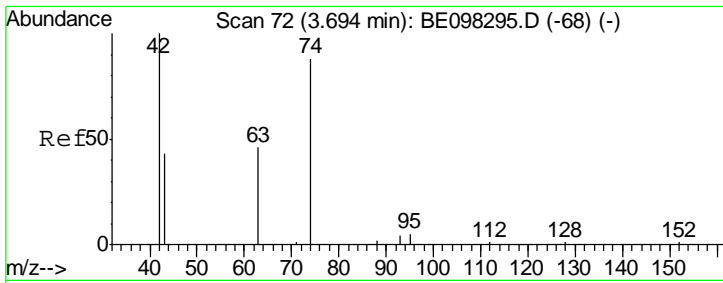
Sohil
 12/16/2018 2:03:28 PM



#2
 1,4-Dioxane
 Concen: 0.299 ng
 RT: 3.37 min Scan# 44
 Delta R.T. -0.00 min
 Lab File: BE098483.D
 Acq: 15 Dec 2018 21:51

Tgt Ion	Resp	Lower	Upper
88	406		
88	100		
58	85.2	75.0	112.6
43	83.0	38.3	57.5#





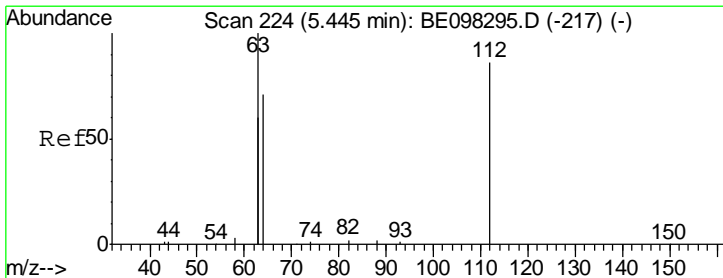
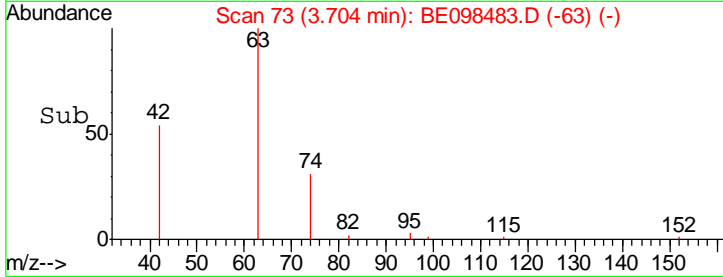
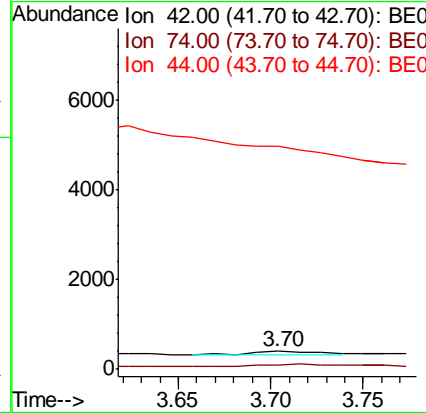
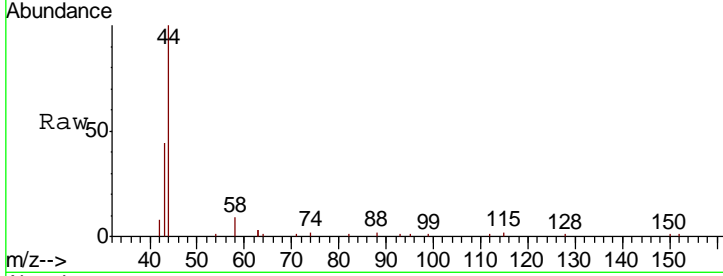
#3
 n-Nitrosodimethylamine
 Concen: 0.158 ng
 RT: 3.70 min Scan# 73
 Delta R.T. 0.01 min
 Lab File: BE098483.D
 Acq: 15 Dec 2018 21:51

Instrument :
 BNA_E
ClientSampled :
 PB115688BS

Tgt Ion	Ratio	Lower	Upper
42	100		
74	77.7	0.0	0.0#
44	0.0	0.0	0.0

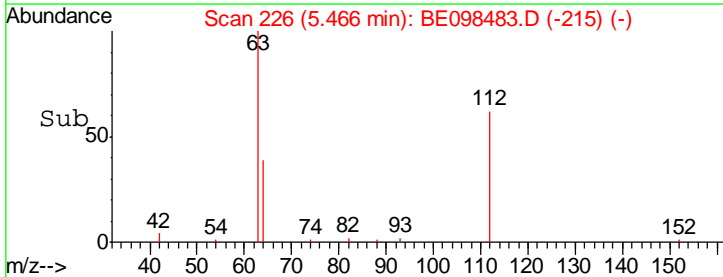
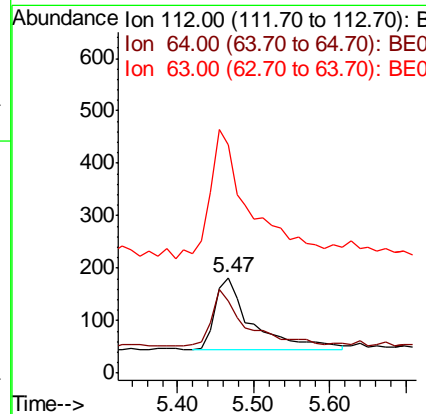
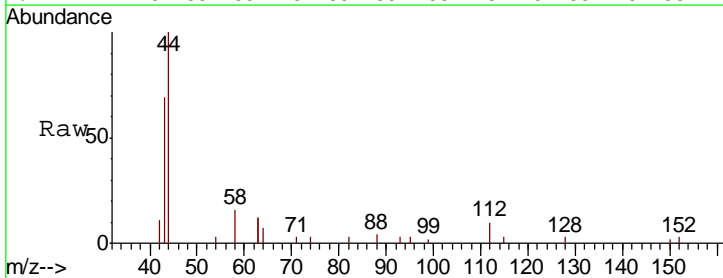
Manual Integrations
APPROVED

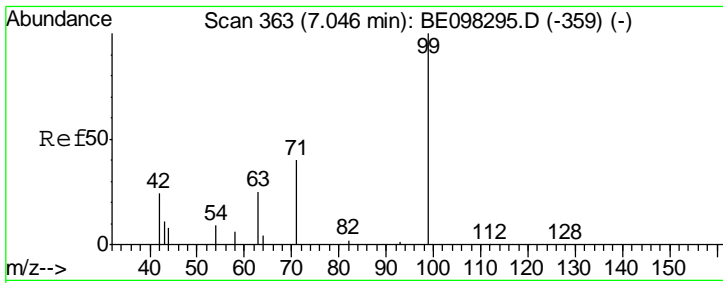
Sohil
 12/16/2018 2:03:28 PM



#4
 2-Fluorophenol
 Concen: 0.257 ng
 RT: 5.47 min Scan# 226
 Delta R.T. 0.02 min
 Lab File: BE098483.D
 Acq: 15 Dec 2018 21:51

Tgt Ion	Ratio	Lower	Upper
112	100		
64	72.5	59.8	89.8
63	191.5	133.7	200.5



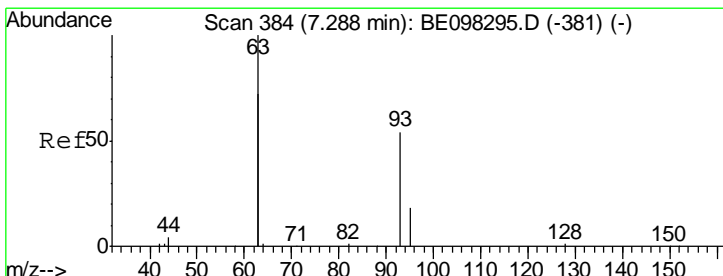
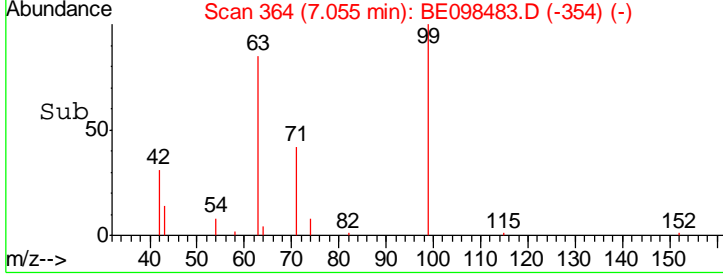
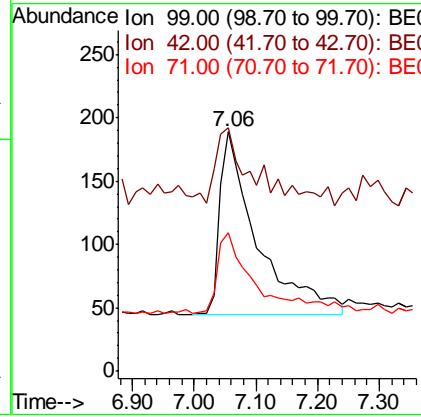
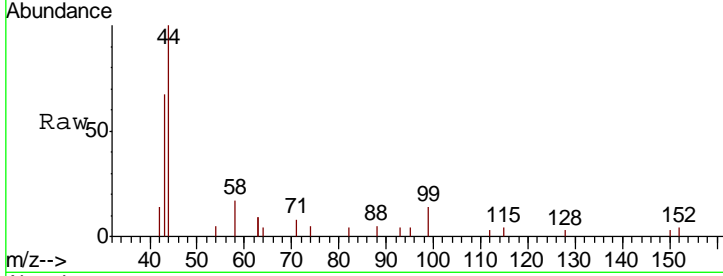


#5
 Phenol-d6
 Concen: 0.232 ng
 RT: 7.06 min Scan# 364
 Delta R.T. 0.01 min
 Lab File: BE098483.D
 Acq: 15 Dec 2018 21:51

Instrument :
 BNA_E
ClientSampled :
 PB115688BS

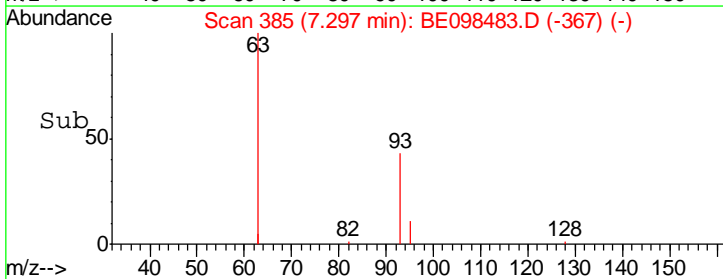
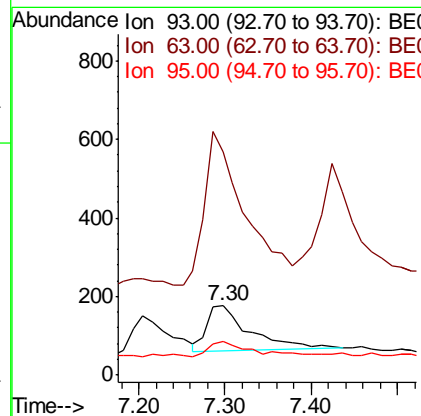
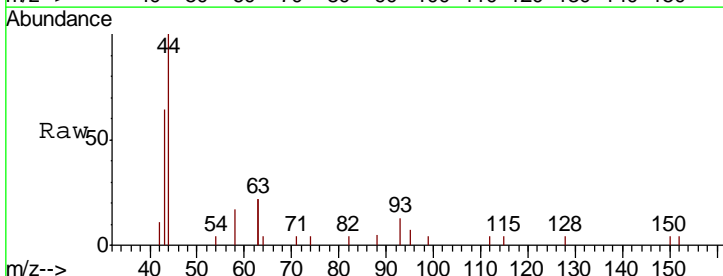
Tgt Ion	Resp	Lower	Upper
99	603		
42	22.6	26.3	39.5#
71	45.1	33.6	50.4

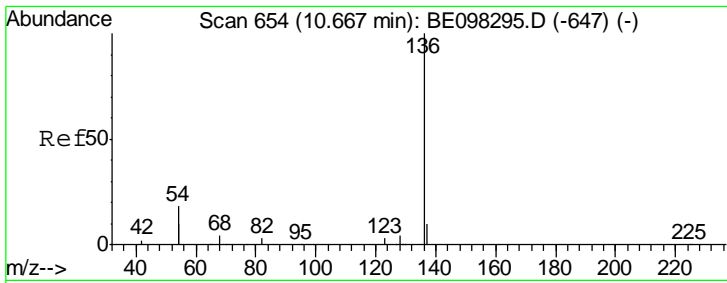
Manual Integrations
APPROVED
 Sohil
 12/16/2018 2:03:28 PM



#6
 bis(2-Chloroethyl)ether
 Concen: 0.166 ng
 RT: 7.30 min Scan# 385
 Delta R.T. 0.01 min
 Lab File: BE098483.D
 Acq: 15 Dec 2018 21:51

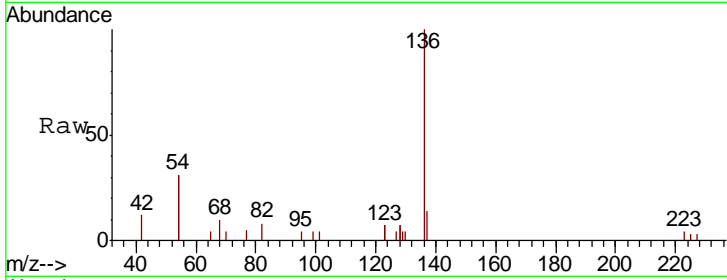
Tgt Ion	Resp	Lower	Upper
93	410		
63	315.6	264.4	396.6
95	33.7	26.6	40.0





#7
 Naphthalene-d8
 Concen: 0.400 ng
 RT: 10.65 min Scan# 653
 Delta R.T. -0.01 min
 Lab File: BE098483.D
 Acq: 15 Dec 2018 21:51

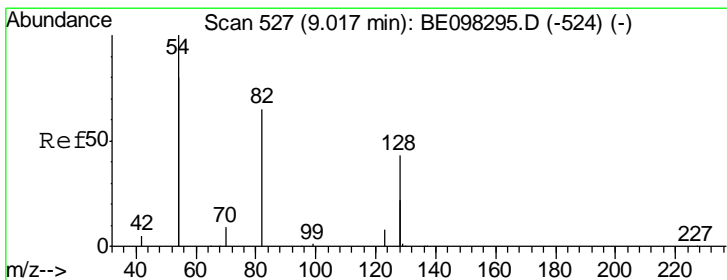
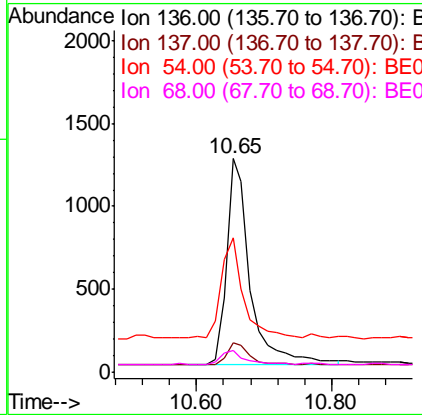
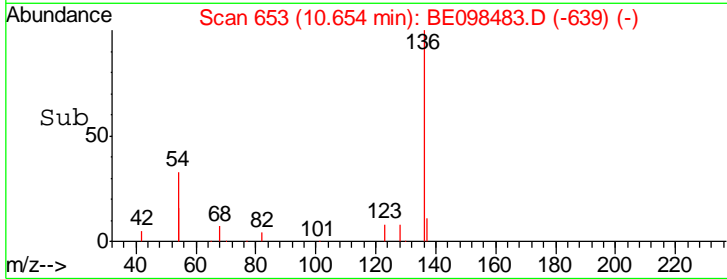
Instrument :
 BNA_E
ClientSampled :
 PB115688BS



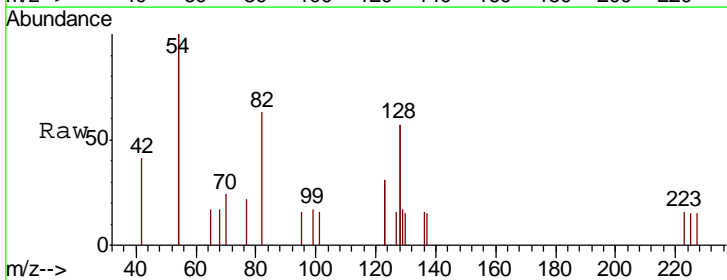
Tgt Ion	Resp	Lower	Upper
136	100		
137	14.0	9.2	13.8#
54	62.9	28.4	42.6#
68	9.9	5.4	8.0#

Manual Integrations
APPROVED

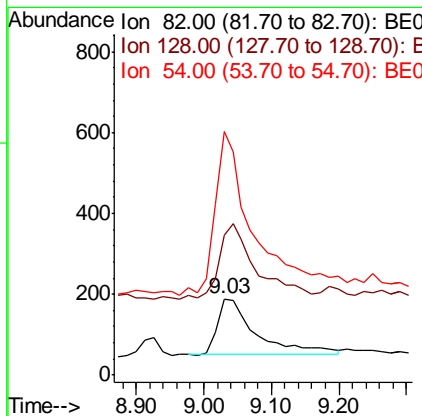
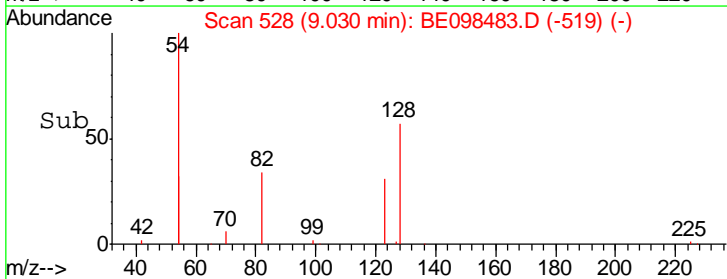
Sohil
 12/16/2018 2:03:28 PM

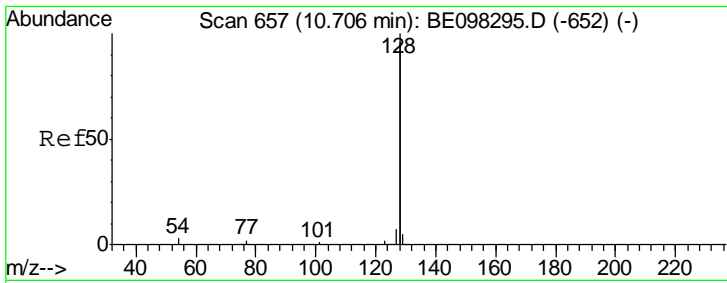


#8
 Nitrobenzene-d5
 Concen: 0.197 ng
 RT: 9.03 min Scan# 528
 Delta R.T. 0.01 min
 Lab File: BE098483.D
 Acq: 15 Dec 2018 21:51



Tgt Ion	Resp	Lower	Upper
82	100		
128	183.1	102.4	153.6#
54	318.5	221.8	332.8





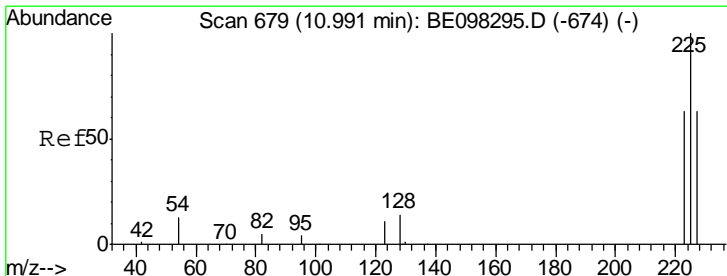
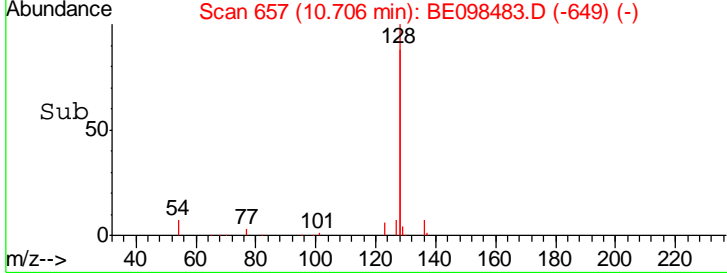
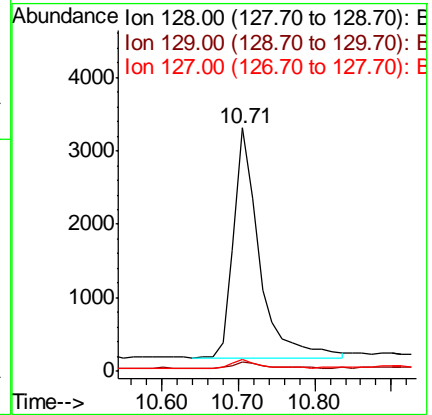
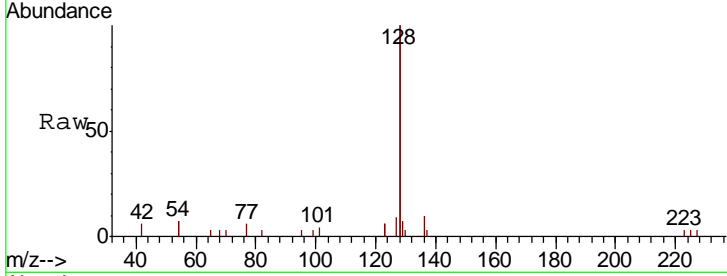
#9
 Naphthalene
 Concen: 0.236 ng
 RT: 10.71 min Scan# 657
 Delta R.T. -0.00 min
 Lab File: BE098483.D
 Acq: 15 Dec 2018 21:51

Instrument :
 BNA_E
 ClientSampled :
 PB115688BS

Tgt Ion	Ratio	Lower	Upper
128	100		
129	3.7	2.5	3.7#
127	4.7	2.7	4.1#

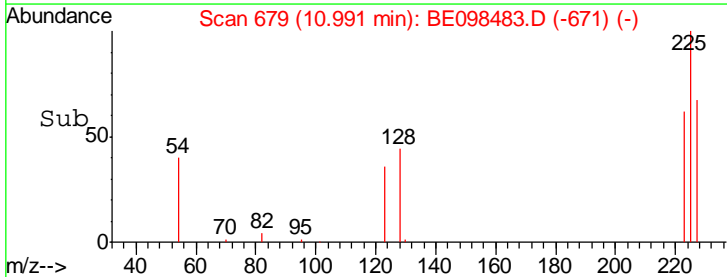
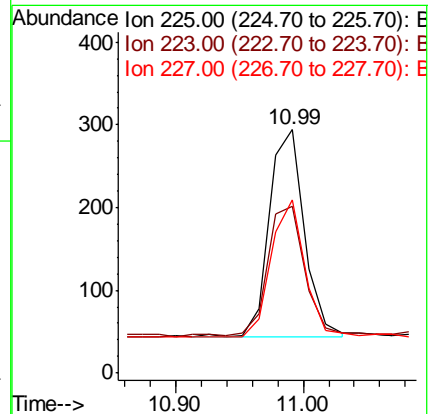
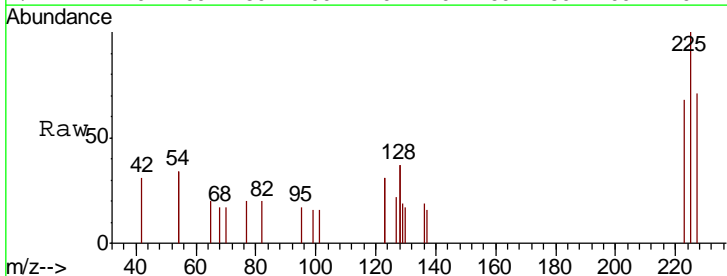
Manual Integrations
 APPROVED

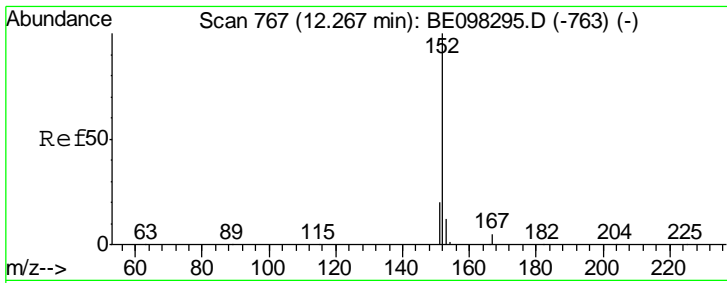
Sohil
 12/16/2018 2:03:28 PM



#10
 Hexachlorobutadiene
 Concen: 0.245 ng
 RT: 10.99 min Scan# 679
 Delta R.T. -0.00 min
 Lab File: BE098483.D
 Acq: 15 Dec 2018 21:51

Tgt Ion	Ratio	Lower	Upper
225	100		
223	67.4	49.4	74.0
227	63.8	52.0	78.0





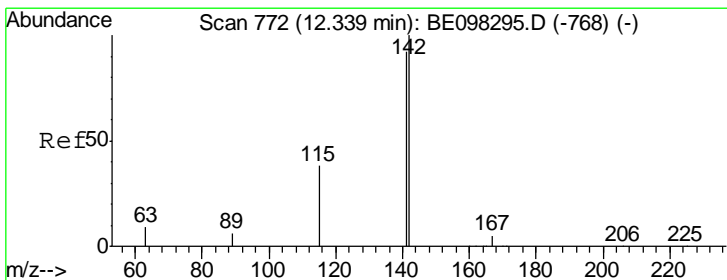
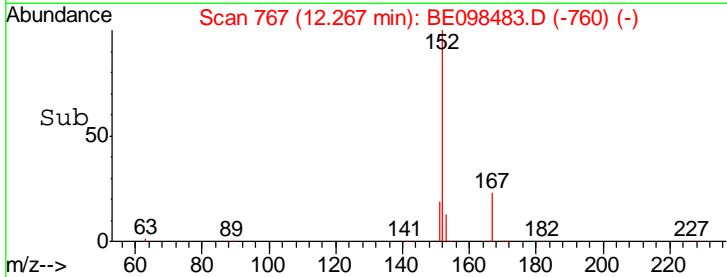
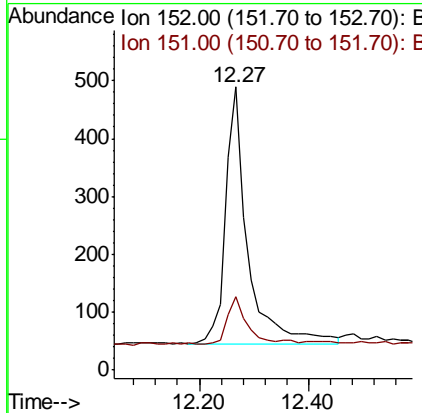
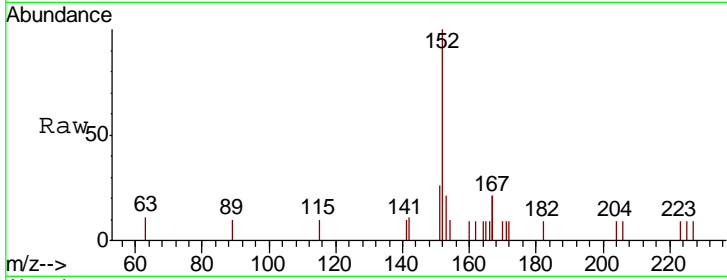
#11
 2-Methylnaphthalene-d10
 Concen: 0.256 ng
 RT: 12.27 min Scan# 767
 Delta R.T. 0.00 min
 Lab File: BE098483.D
 Acq: 15 Dec 2018 21:51

Instrument :
 BNA_E
ClientSampled :
 PB115688BS

Tgt Ion	Resp	Lower	Upper
152	1274		
151	16.8	16.2	24.4

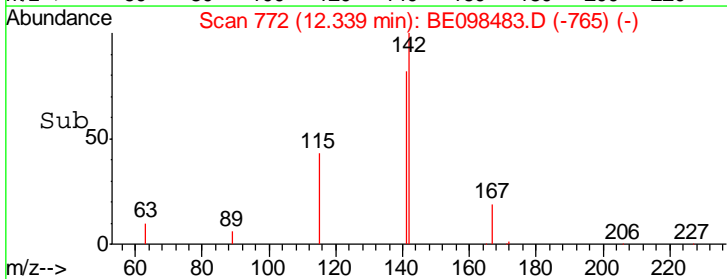
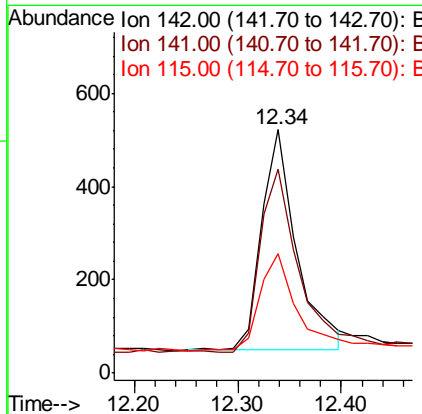
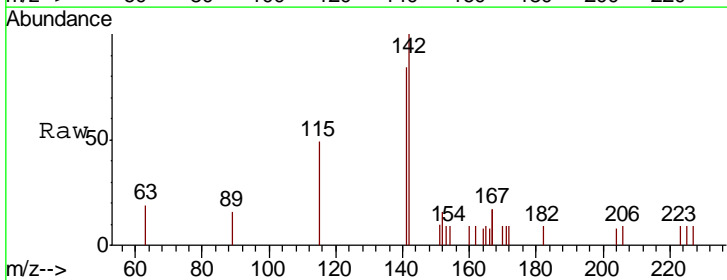
Manual Integrations
APPROVED

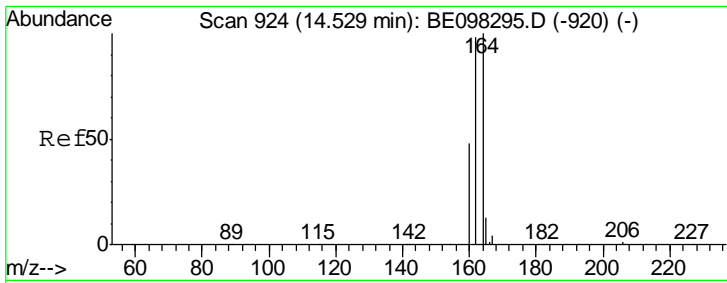
Sohil
 12/16/2018 2:03:28 PM



#12
 2-Methylnaphthalene
 Concen: 0.222 ng
 RT: 12.34 min Scan# 772
 Delta R.T. 0.00 min
 Lab File: BE098483.D
 Acq: 15 Dec 2018 21:51

Tgt Ion	Resp	Lower	Upper
142	1115		
141	83.7	71.0	106.6
115	49.2	32.2	48.2#





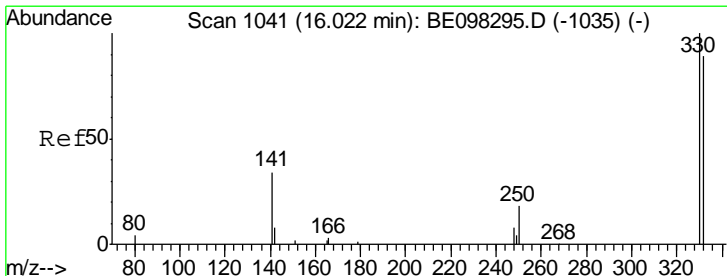
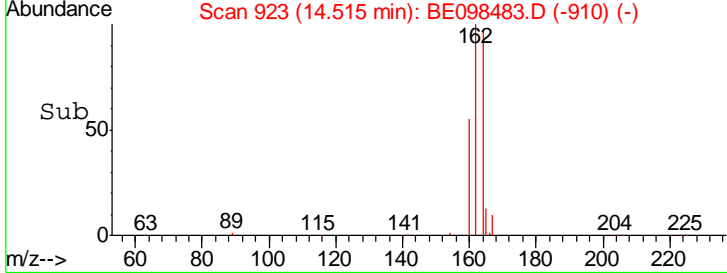
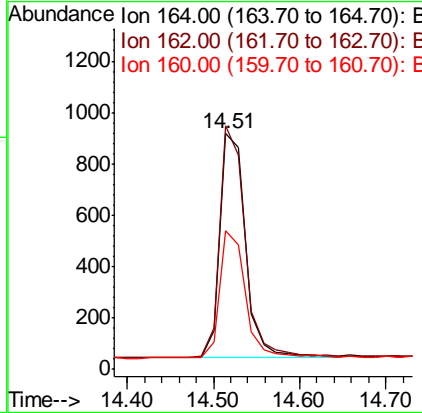
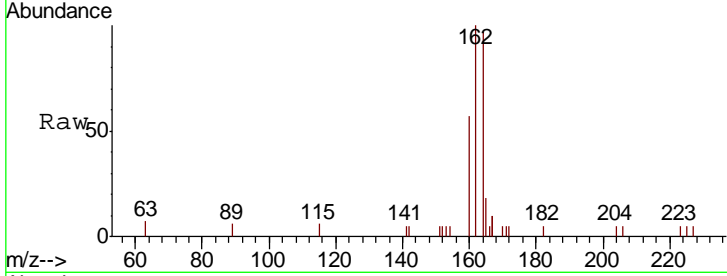
#13
 Acenaphthene-d10
 Concen: 0.400 ng
 RT: 14.51 min Scan# 923
 Delta R.T. -0.01 min
 Lab File: BE098483.D
 Acq: 15 Dec 2018 21:51

Instrument :
 BNA_E
 ClientSampled :
 PB115688BS

Tgt Ion	Resp	Lower	Upper
164	100		
162	103.4	77.6	116.4
160	58.9	36.0	54.0

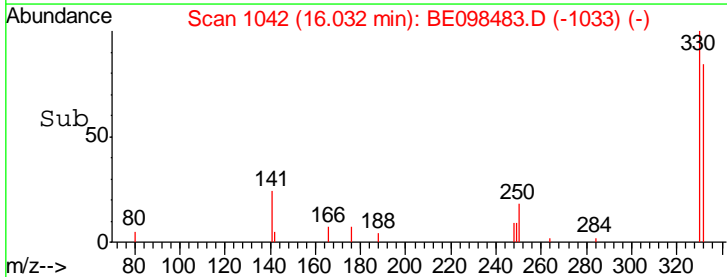
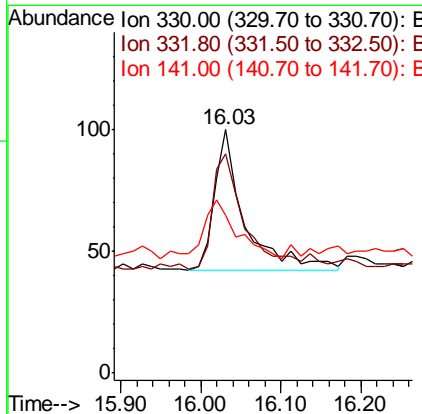
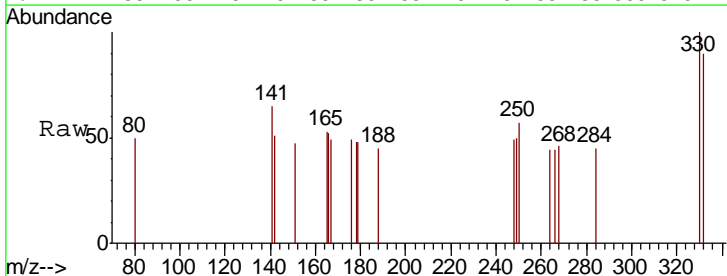
Manual Integrations
 APPROVED

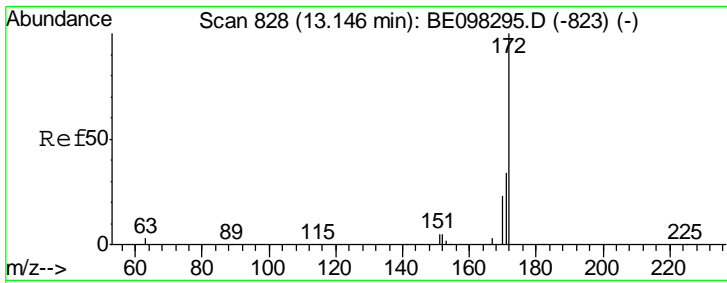
Sohil
 12/16/2018 2:03:28 PM



#14
 2,4,6-Tribromophenol
 Concen: 0.232 ng
 RT: 16.03 min Scan# 1042
 Delta R.T. 0.01 min
 Lab File: BE098483.D
 Acq: 15 Dec 2018 21:51

Tgt Ion	Resp	Lower	Upper
330	100		
332	82.5	76.2	114.4
141	47.4	39.0	58.4





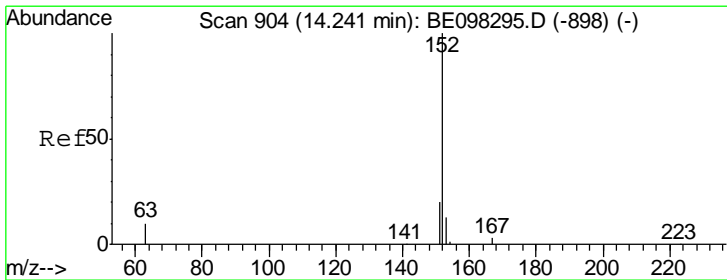
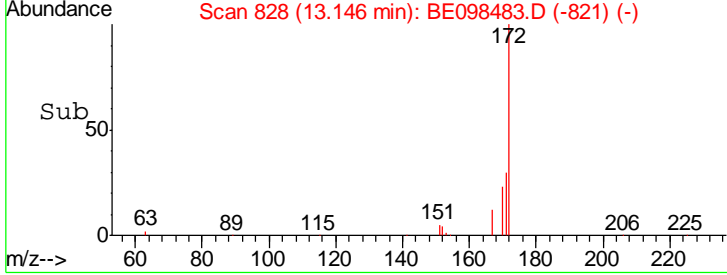
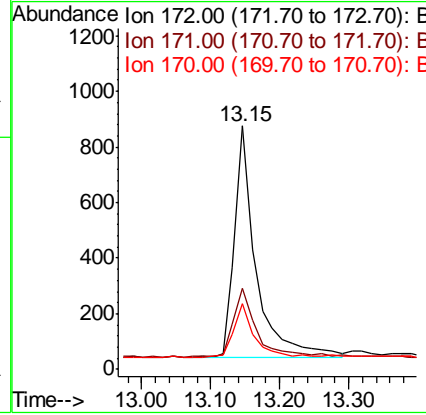
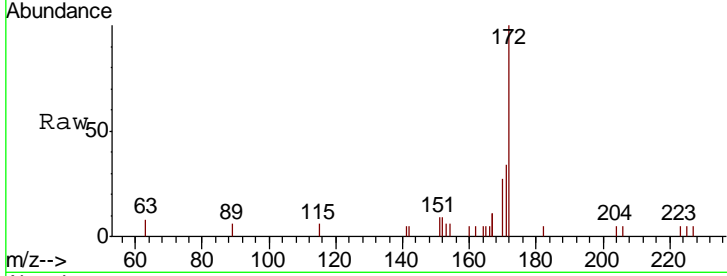
#15
 2-Fluorobiphenyl
 Concen: 0.237 ng
 RT: 13.15 min Scan# 828
 Delta R.T. 0.00 min
 Lab File: BE098483.D
 Acq: 15 Dec 2018 21:51

Instrument :
 BNA_E
 ClientSampleId :
 PB115688BS

Tgt Ion	Resp	Lower	Upper
172	1808		
171	33.6	27.5	41.3
170	26.9	19.6	29.4

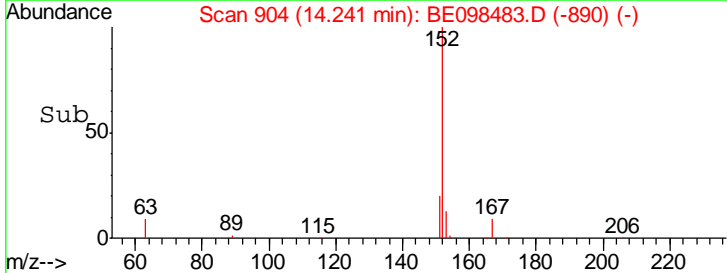
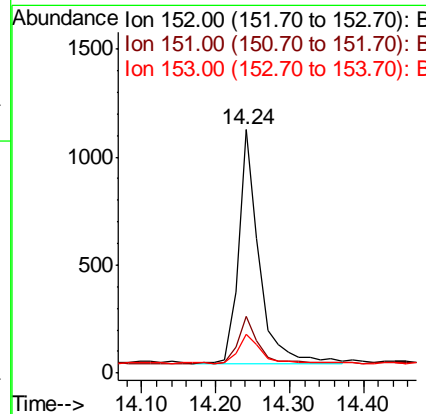
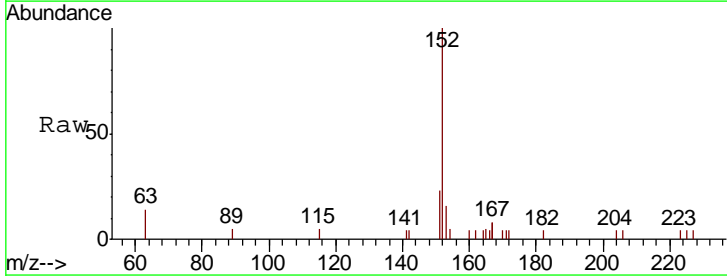
Manual Integrations
 APPROVED

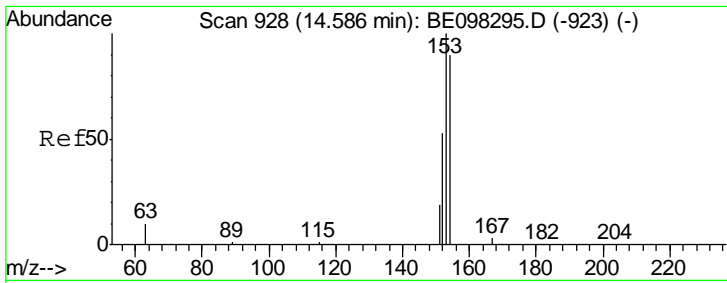
Sohil
 12/16/2018 2:03:28 PM



#16
 Acenaphthylene
 Concen: 0.244 ng
 RT: 14.24 min Scan# 904
 Delta R.T. 0.00 min
 Lab File: BE098483.D
 Acq: 15 Dec 2018 21:51

Tgt Ion	Resp	Lower	Upper
152	2074		
151	20.5	15.5	23.3
153	13.7	10.6	16.0





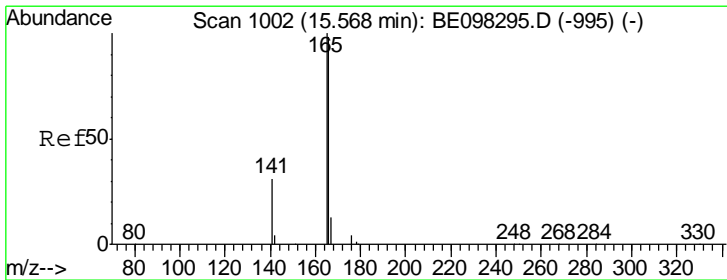
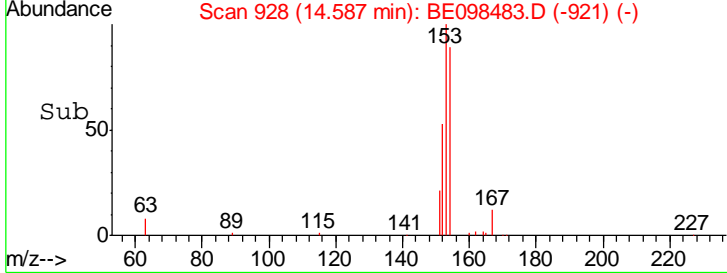
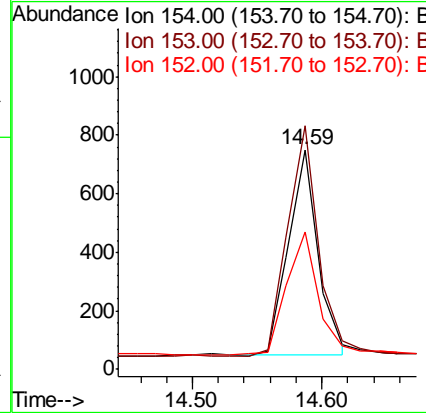
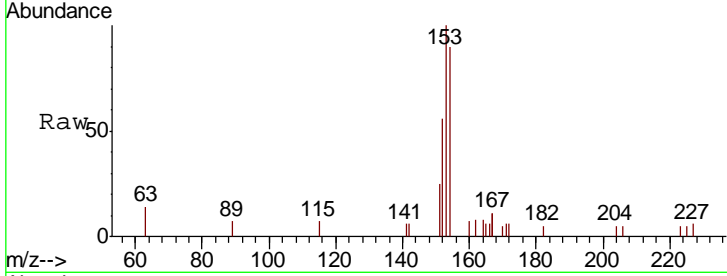
#17
 Acenaphthene
 Concen: 0.222 ng
 RT: 14.59 min Scan# 928
 Delta R.T. 0.00 min
 Lab File: BE098483.D
 Acq: 15 Dec 2018 21:51

Instrument :
 BNA_E
 ClientSampled :
 PB115688BS

Tgt Ion	Resp	Lower	Upper
154	100		
153	115.3	91.8	137.6
152	62.7	45.5	68.3

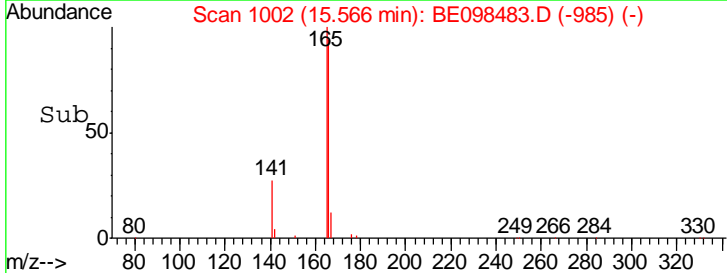
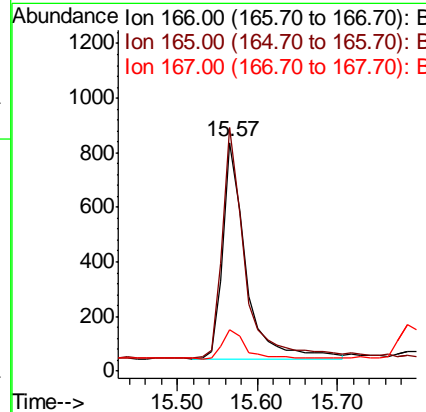
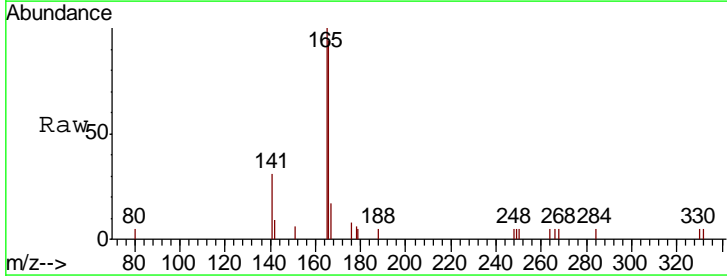
Manual Integrations
 APPROVED

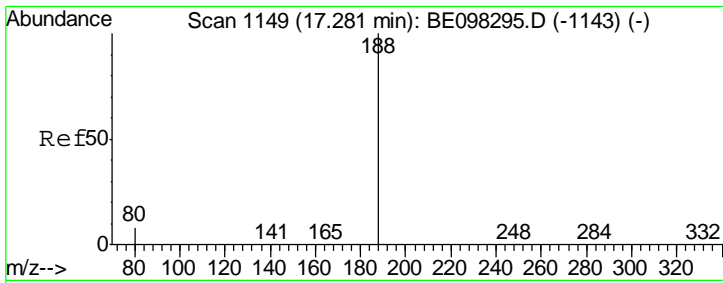
Sohil
 12/16/2018 2:03:28 PM



#18
 Fluorene
 Concen: 0.231 ng
 RT: 15.57 min Scan# 1002
 Delta R.T. -0.00 min
 Lab File: BE098483.D
 Acq: 15 Dec 2018 21:51

Tgt Ion	Resp	Lower	Upper
166	100		
165	104.0	79.3	118.9
167	14.7	11.3	16.9



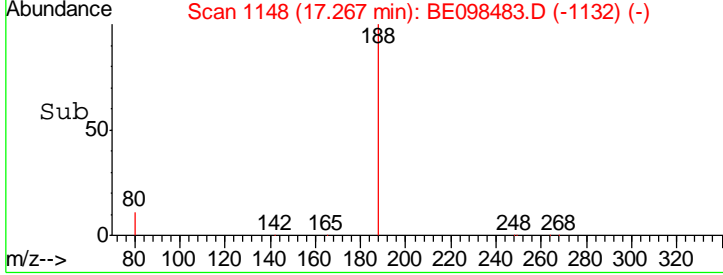
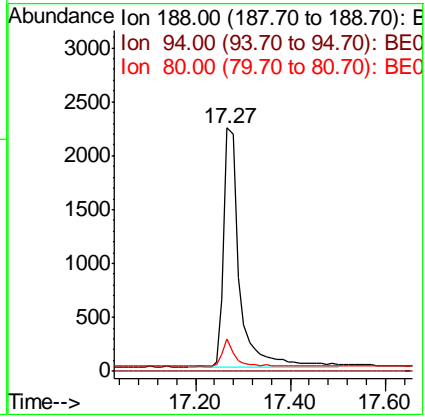
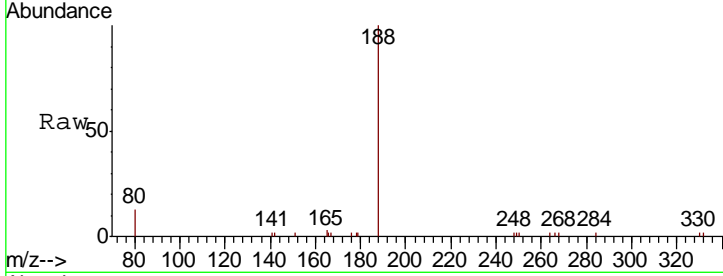


#19
 Phenanthrene-d10
 Concen: 0.400 ng
 RT: 17.27 min Scan# 1148
 Delta R.T. -0.01 min
 Lab File: BE098483.D
 Acq: 15 Dec 2018 21:51

Instrument :
 BNA_E
 ClientSampleId :
 PB115688BS

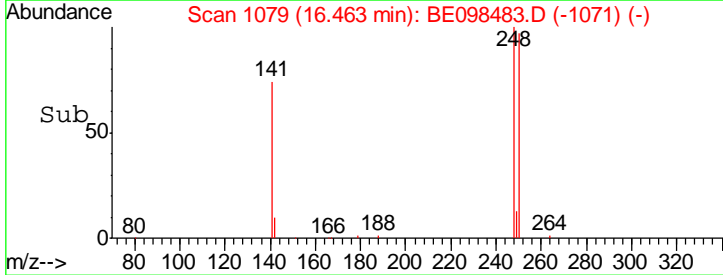
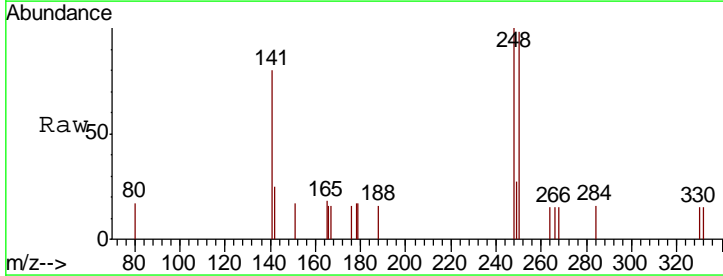
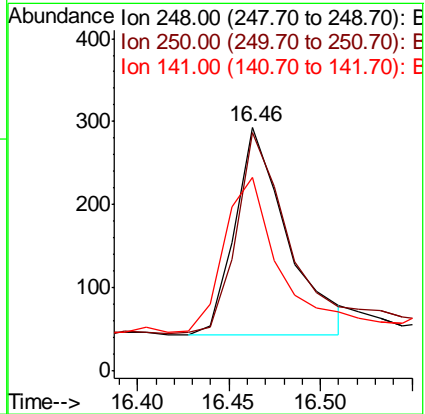
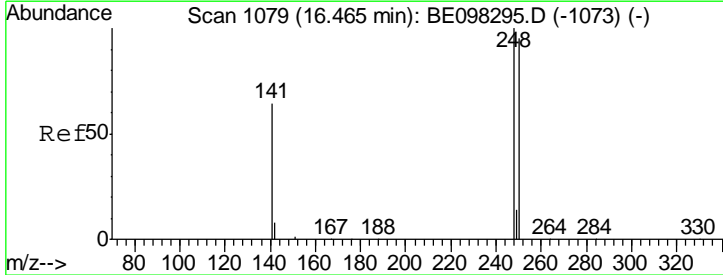
Tgt Ion	Ratio	Lower	Upper
188	100		
94	0.0	0.0	0.0
80	13.1	7.2	10.8#

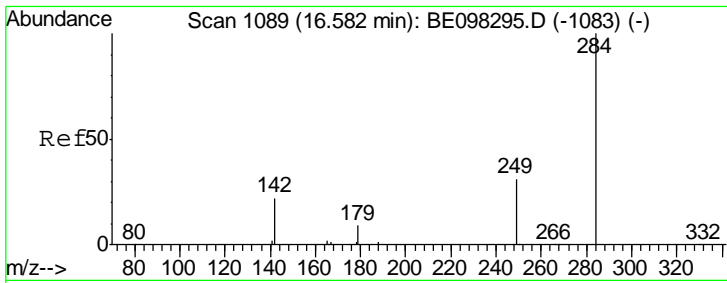
Manual Integrations
APPROVED
 Sohil
 12/16/2018 2:03:28 PM



#20
 4-Bromophenyl-phenylether
 Concen: 0.180 ng
 RT: 16.46 min Scan# 1079
 Delta R.T. -0.00 min
 Lab File: BE098483.D
 Acq: 15 Dec 2018 21:51

Tgt Ion	Ratio	Lower	Upper
248	100		
250	98.0	71.0	106.6
141	79.5	62.1	93.1





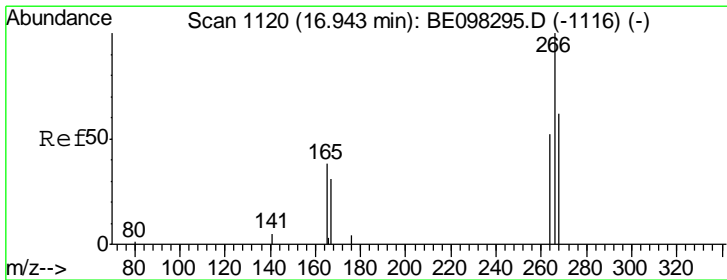
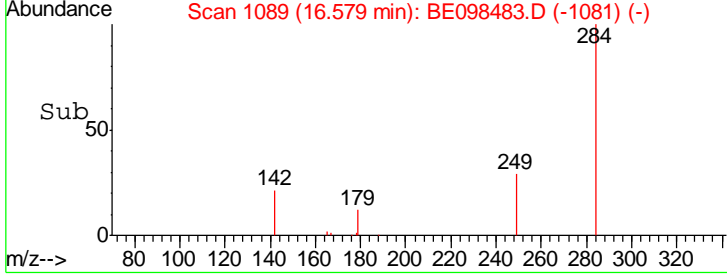
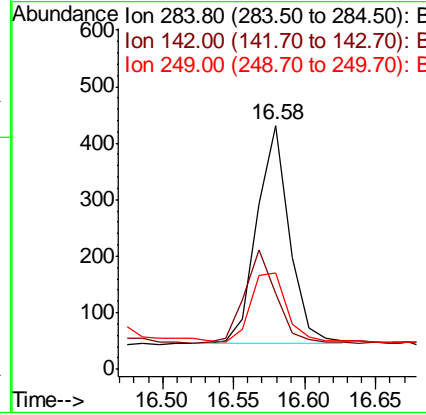
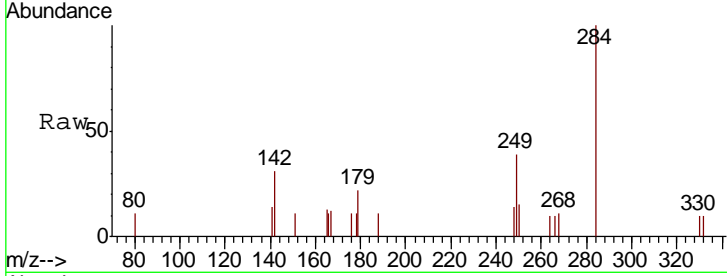
#21
 Hexachlorobenzene
 Concen: 0.208 ng
 RT: 16.58 min Scan# 1089
 Delta R.T. -0.00 min
 Lab File: BE098483.D
 Acq: 15 Dec 2018 21:51

Instrument :
 BNA_E
 ClientSampleId :
 PB115688BS

Tgt Ion	Ratio	Lower	Upper
284	100		
142	41.8	26.3	39.5#
249	33.4	26.0	39.0

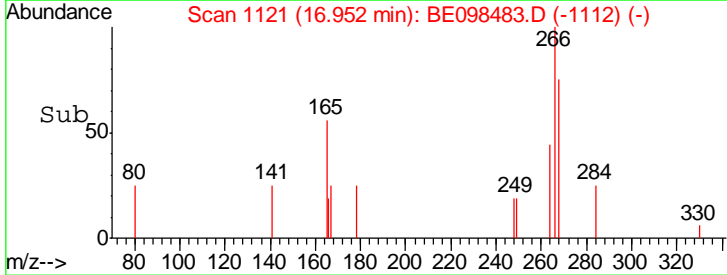
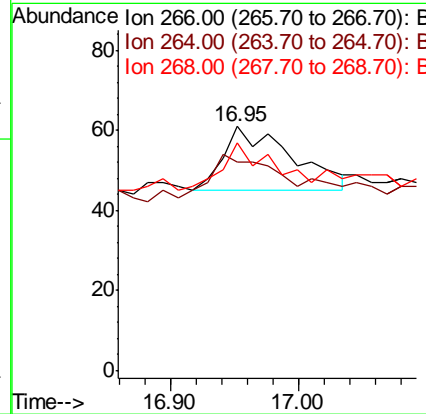
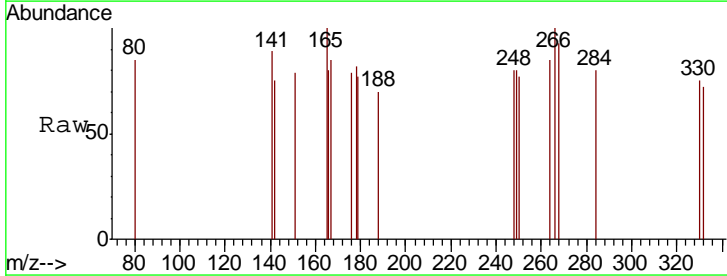
Manual Integrations
 APPROVED

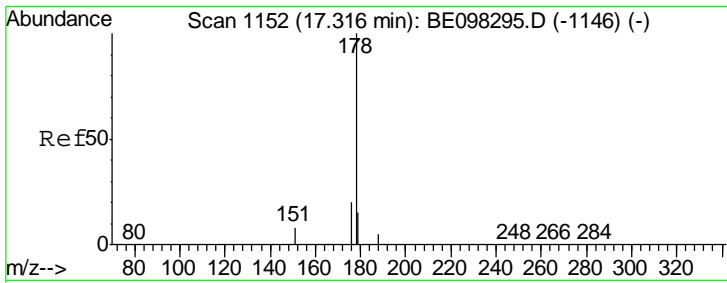
Sohil
 12/16/2018 2:03:28 PM



#22
 Pentachlorophenol
 Concen: 0.144 ng
 RT: 16.95 min Scan# 1121
 Delta R.T. 0.01 min
 Lab File: BE098483.D
 Acq: 15 Dec 2018 21:51

Tgt Ion	Ratio	Lower	Upper
266	100		
264	85.2	59.0	88.4
268	93.4	55.1	82.7#





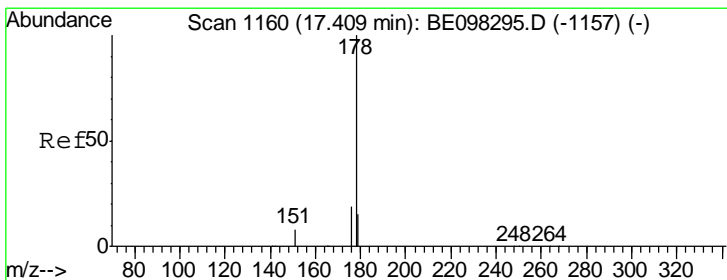
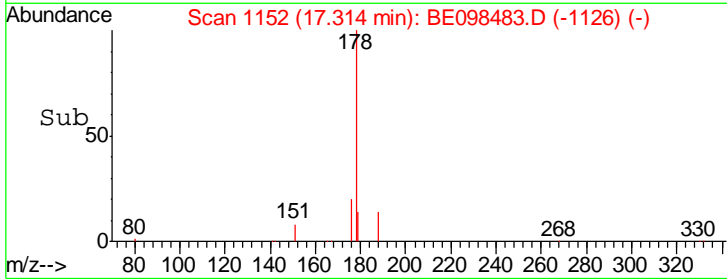
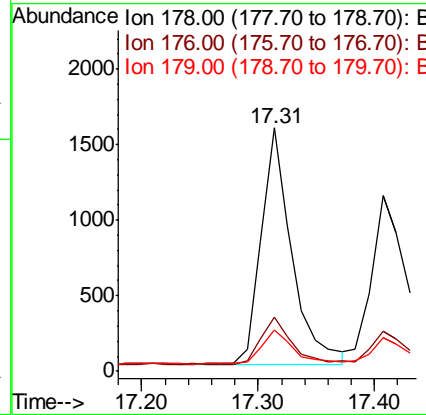
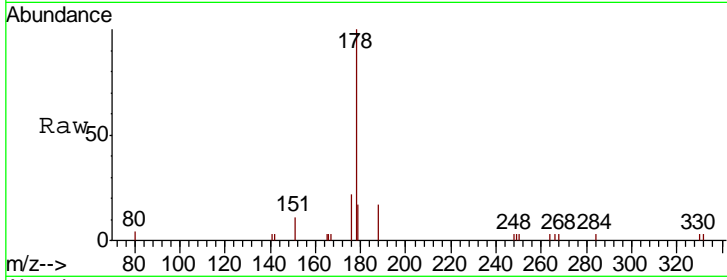
#23
 Phenanthrene
 Concen: 0.229 ng
 RT: 17.31 min Scan# 1152
 Delta R.T. -0.00 min
 Lab File: BE098483.D
 Acq: 15 Dec 2018 21:51

Instrument :
 BNA_E
ClientSampled :
 PB115688BS

Tgt Ion	Ratio	Lower	Upper
178	100		
176	20.0	15.9	23.9
179	15.1	12.3	18.5

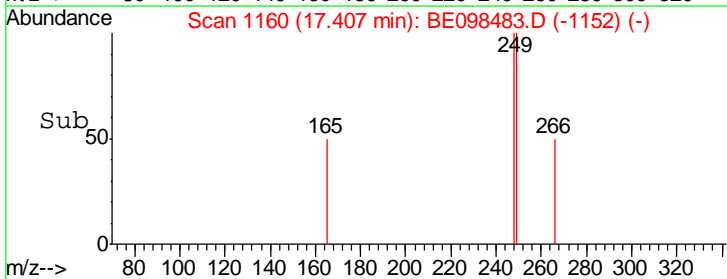
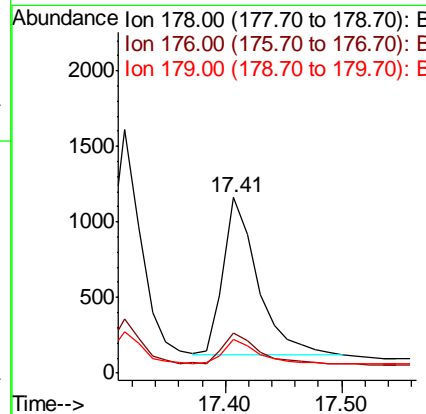
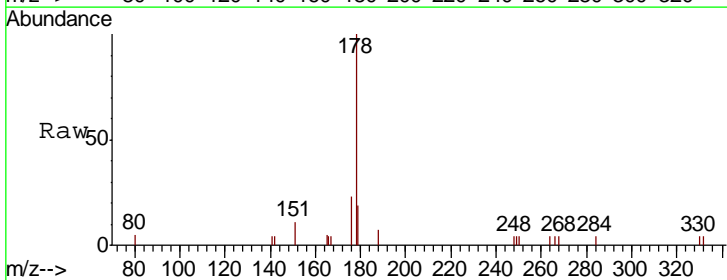
Manual Integrations
APPROVED

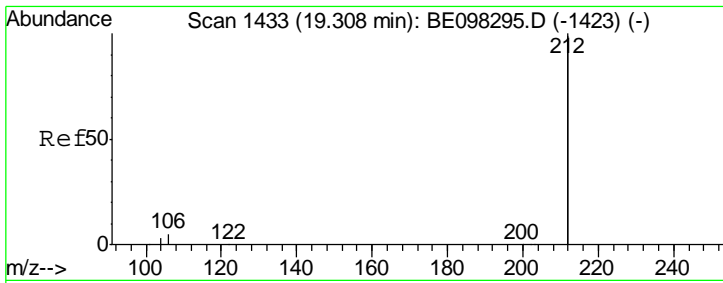
Sohil
 12/16/2018 2:03:28 PM



#24
 Anthracene
 Concen: 0.193 ng
 RT: 17.41 min Scan# 1160
 Delta R.T. -0.00 min
 Lab File: BE098483.D
 Acq: 15 Dec 2018 21:51

Tgt Ion	Ratio	Lower	Upper
178	100		
176	19.9	15.0	22.4
179	16.1	12.3	18.5



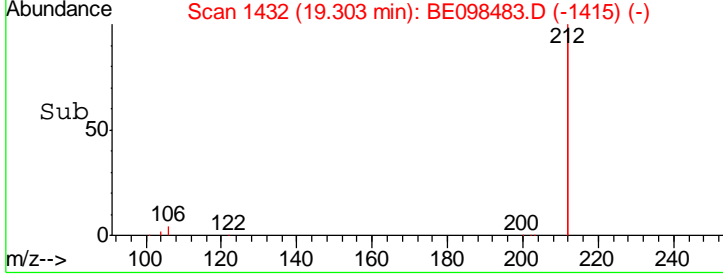
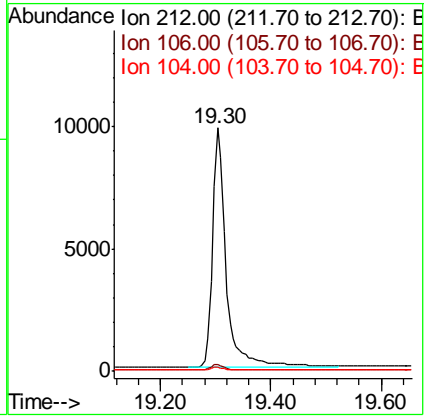
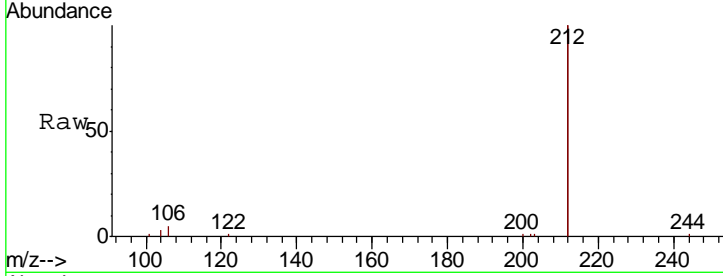


#25
 Fluoranthene-d10
 Concen: 0.251 ng
 RT: 19.30 min Scan# 1432
 Delta R.T. -0.01 min
 Lab File: BE098483.D
 Acq: 15 Dec 2018 21:51

Instrument :
 BNA_E
ClientSampled :
 PB115688BS

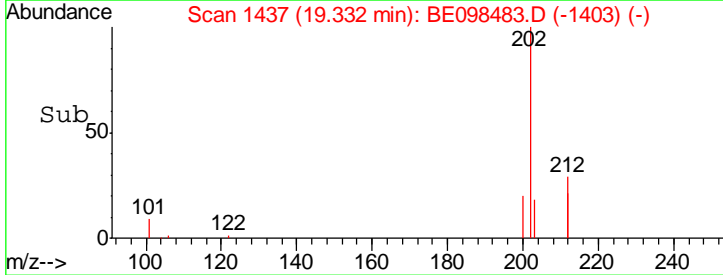
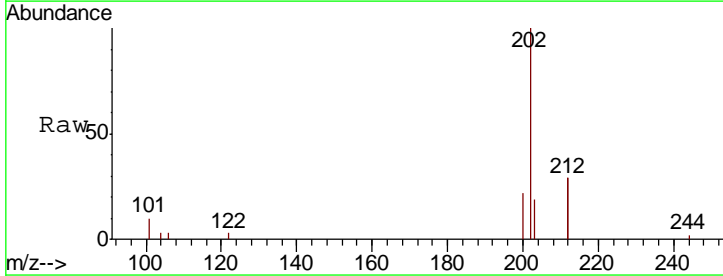
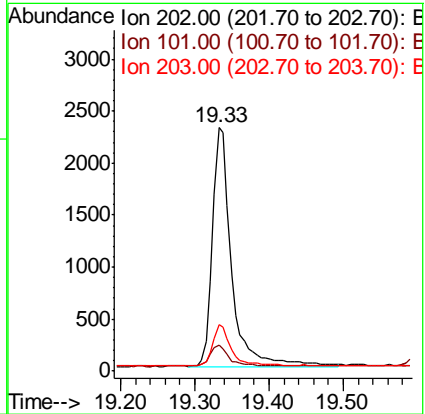
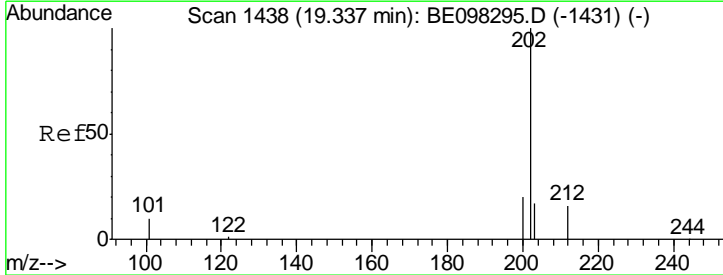
Tgt Ion	Resp	Lower	Upper
212	16576		
212	100		
106	2.4	2.2	3.2
104	1.2	1.3	1.9#

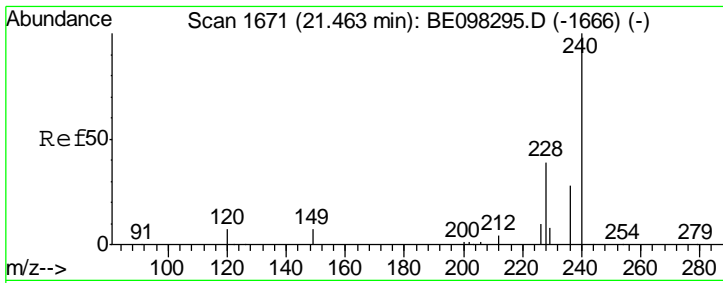
Manual Integrations
APPROVED
 Sohil
 12/16/2018 2:03:28 PM



#26
 Fluoranthene
 Concen: 0.249 ng
 RT: 19.33 min Scan# 1437
 Delta R.T. -0.01 min
 Lab File: BE098483.D
 Acq: 15 Dec 2018 21:51

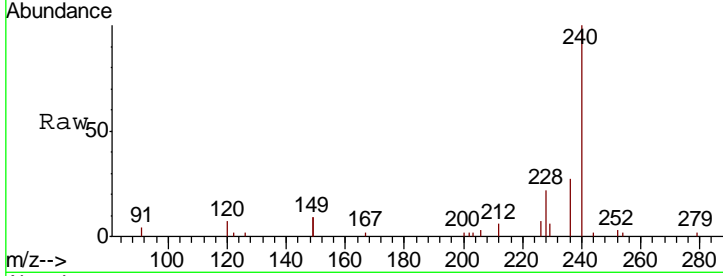
Tgt Ion	Resp	Lower	Upper
202	4113		
202	100		
101	8.5	8.0	12.0
203	17.0	13.8	20.6





#27
 Chrysene-d12
 Concen: 0.400 ng
 RT: 21.46 min Scan# 1671
 Delta R.T. -0.00 min
 Lab File: BE098483.D
 Acq: 15 Dec 2018 21:51

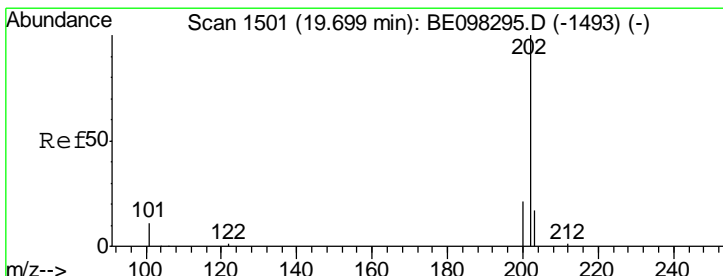
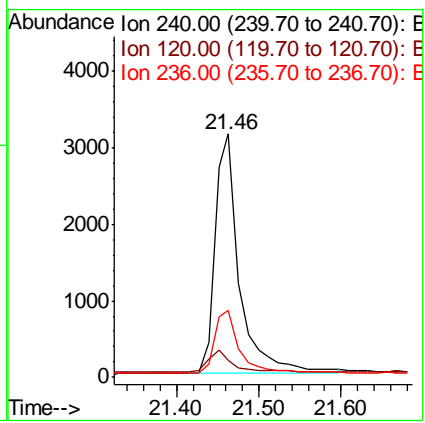
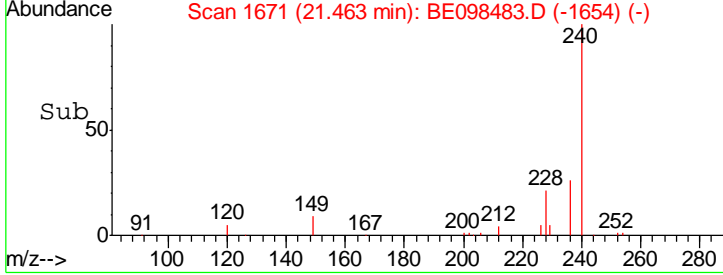
Instrument :
 BNA_E
ClientSampled :
 PB115688BS



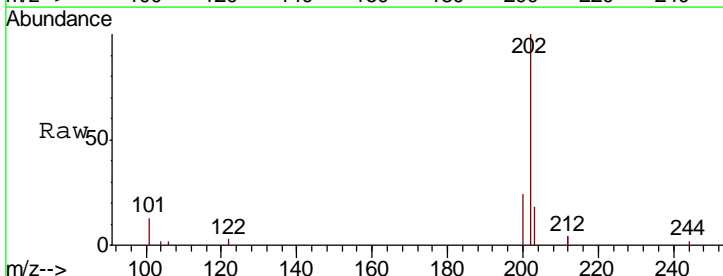
Tgt Ion: 240 Resp: 6585

Ion	Ratio	Lower	Upper
240	100		
120	7.0	9.5	14.3#
236	27.4	22.7	34.1

Manual Integrations
APPROVED
 Sohil
 12/16/2018 2:03:28 PM

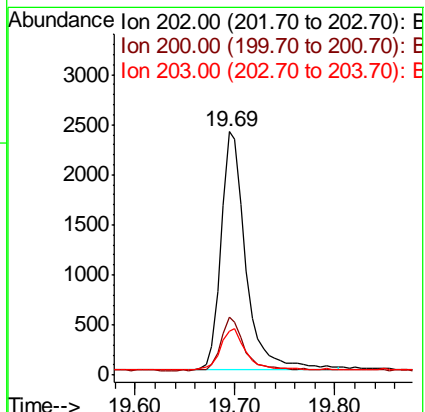
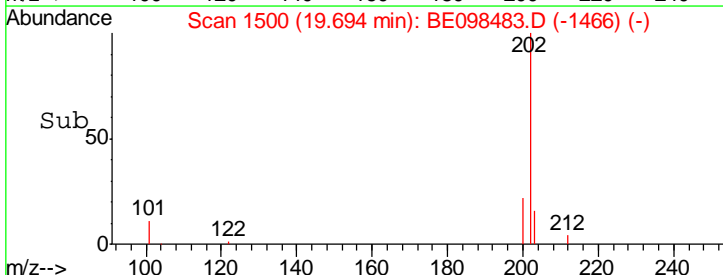


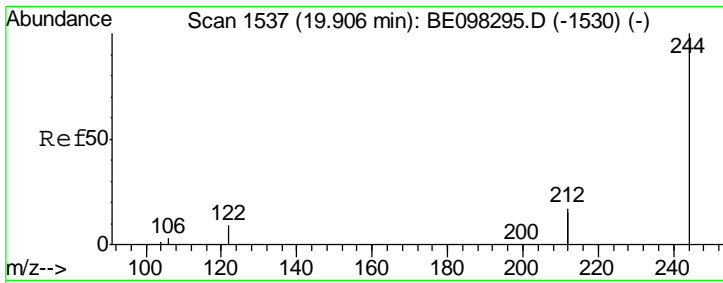
#28
 Pyrene
 Concen: 0.199 ng
 RT: 19.69 min Scan# 1500
 Delta R.T. -0.01 min
 Lab File: BE098483.D
 Acq: 15 Dec 2018 21:51



Tgt Ion: 202 Resp: 4117

Ion	Ratio	Lower	Upper
202	100		
200	21.0	16.7	25.1
203	18.0	14.1	21.1



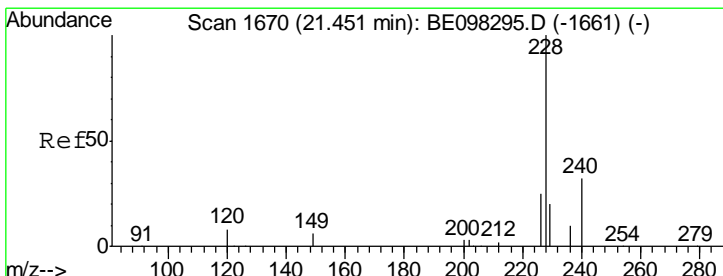
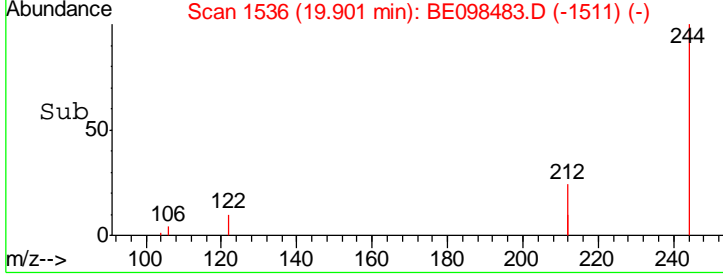
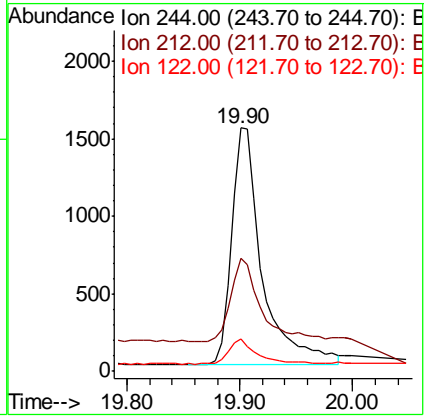
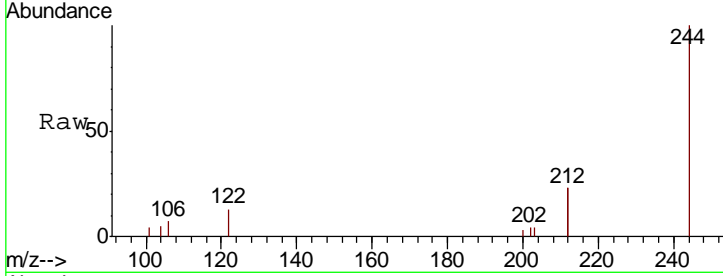


#29
 Terphenyl-d14
 Concen: 0.181 ng
 RT: 19.90 min Scan# 1536
 Delta R.T. -0.01 min
 Lab File: BE098483.D
 Acq: 15 Dec 2018 21:51

Instrument :
 BNA_E
ClientSampled :
 PB115688BS

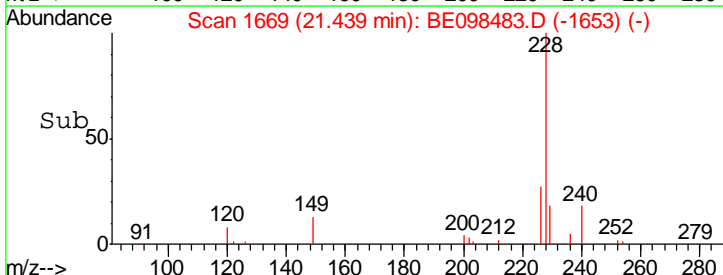
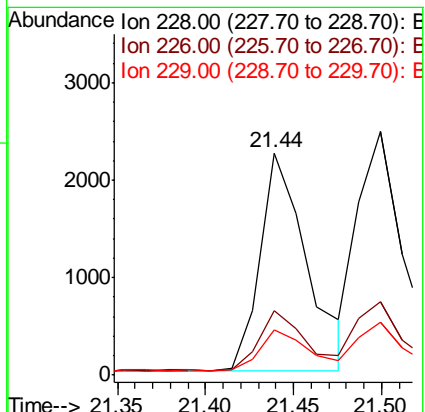
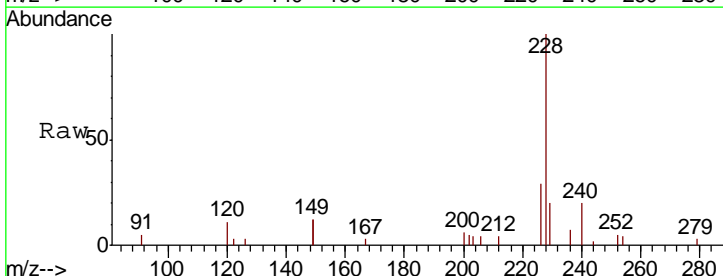
Tgt Ion	Resp	Lower	Upper
244	100		
212	46.2	27.4	41.0#
122	13.2	8.3	12.5#

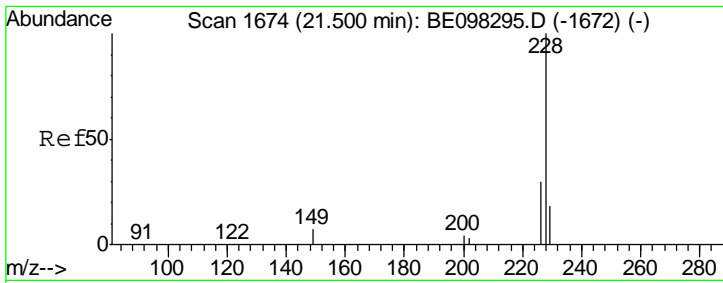
Manual Integrations
APPROVED
 Sohil
 12/16/2018 2:03:28 PM



#30
 Benzo(a)anthracene
 Concen: 0.218 ng
 RT: 21.44 min Scan# 1669
 Delta R.T. -0.01 min
 Lab File: BE098483.D
 Acq: 15 Dec 2018 21:51

Tgt Ion	Resp	Lower	Upper
228	100		
226	28.9	21.8	32.8
229	20.3	16.3	24.5





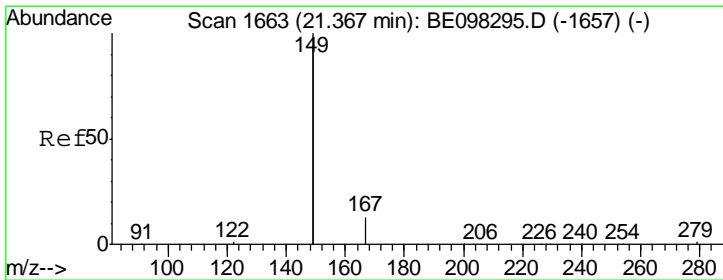
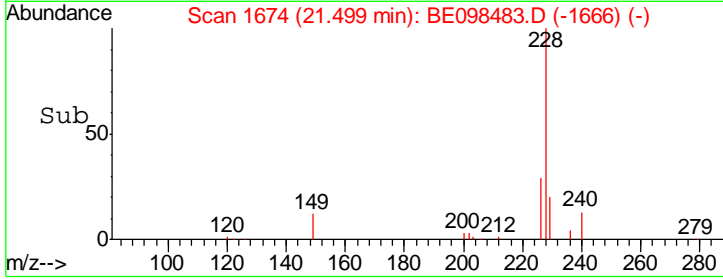
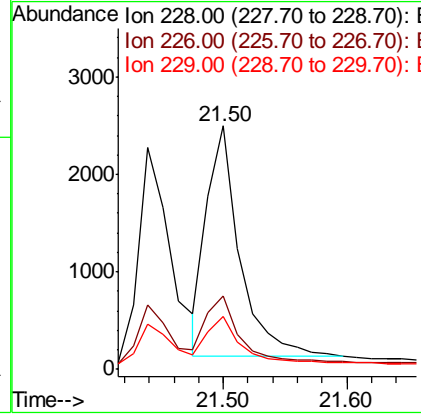
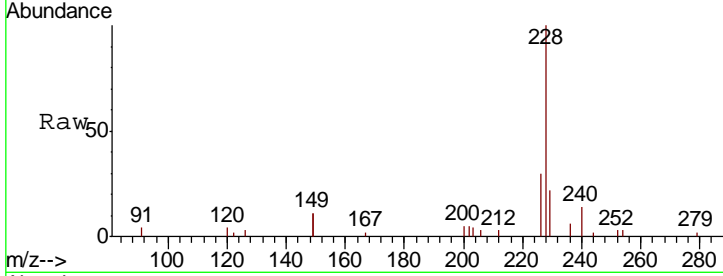
#31
 Chrysene
 Concen: 0.224 ng
 RT: 21.50 min Scan# 1674
 Delta R.T. -0.00 min
 Lab File: BE098483.D
 Acq: 15 Dec 2018 21:51

Instrument :
 BNA_E
 ClientSampled :
 PB115688BS

Tgt Ion	Resp	Lower	Upper
228	100		
226	30.2	23.4	35.0
229	21.5	16.2	24.4

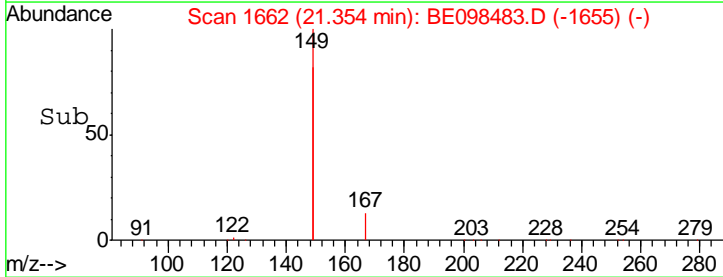
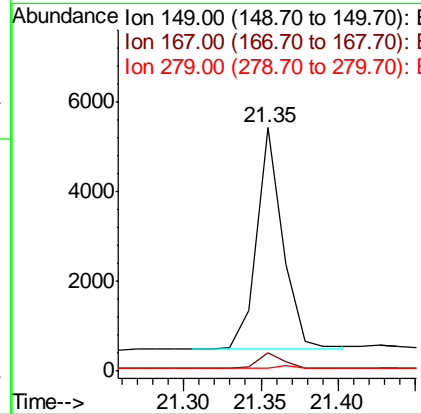
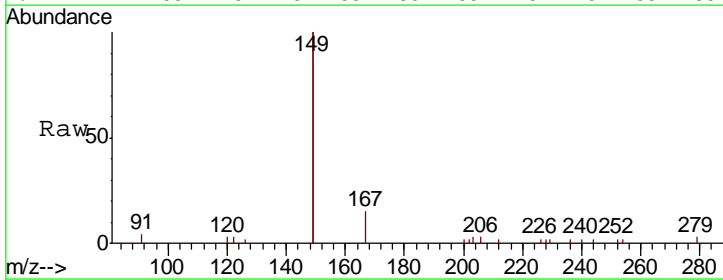
Manual Integrations
 APPROVED

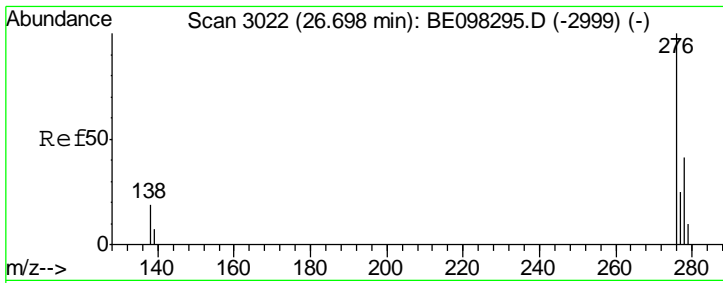
Sohil
 12/16/2018 2:03:28 PM



#32
 Bis(2-ethylhexyl)phthalate
 Concen: 0.151 ng
 RT: 21.35 min Scan# 1662
 Delta R.T. -0.01 min
 Lab File: BE098483.D
 Acq: 15 Dec 2018 21:51

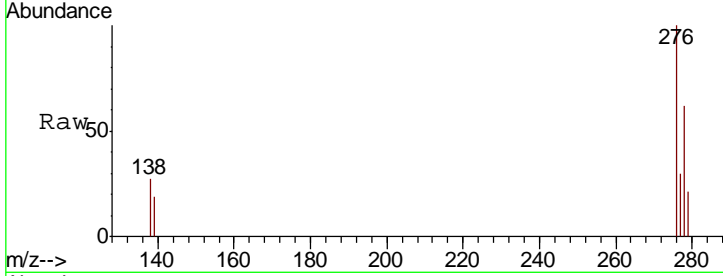
Tgt Ion	Resp	Lower	Upper
149	100		
167	7.0	5.7	8.5
279	1.4	1.0	1.4





#33
 Indeno(1,2,3-cd)pyrene
 Concen: 0.223 ng
 RT: 26.70 min Scan# 3023
 Delta R.T. 0.00 min
 Lab File: BE098483.D
 Acq: 15 Dec 2018 21:51

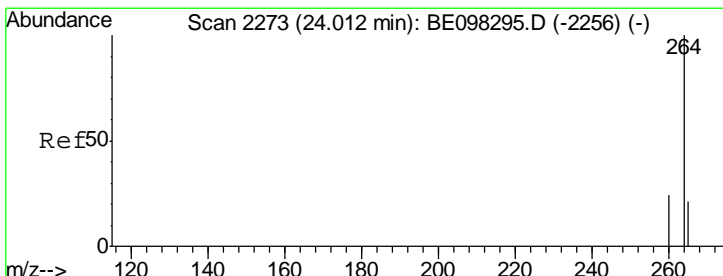
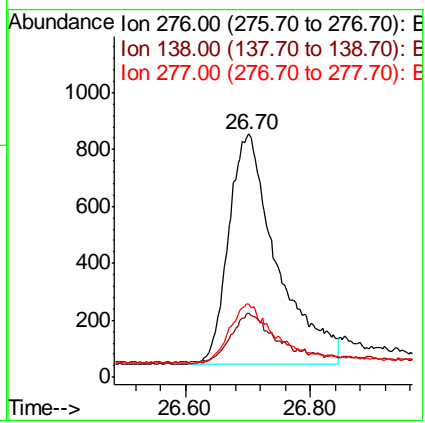
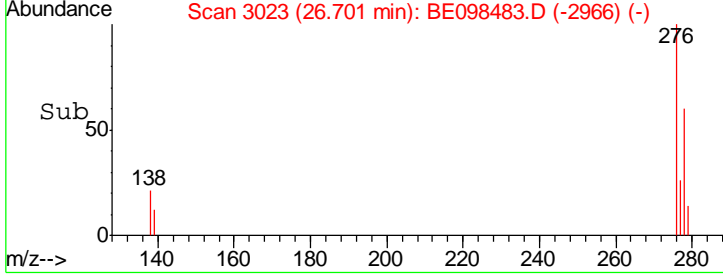
Instrument :
 BNA_E
ClientSampled :
 PB115688BS



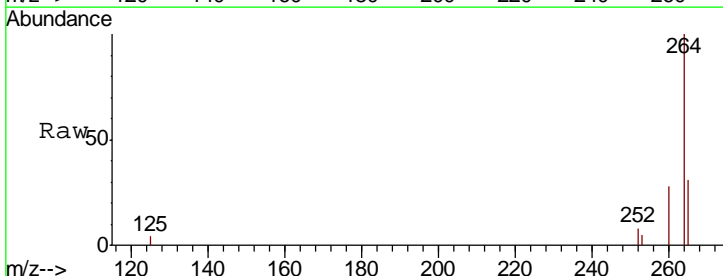
Tgt Ion: 276 Resp: 4358

Ion	Ratio	Lower	Upper
276	100		
138	18.3	16.3	24.5
277	24.1	20.2	30.4

Manual Integrations
APPROVED
 Sohil
 12/16/2018 2:03:28 PM

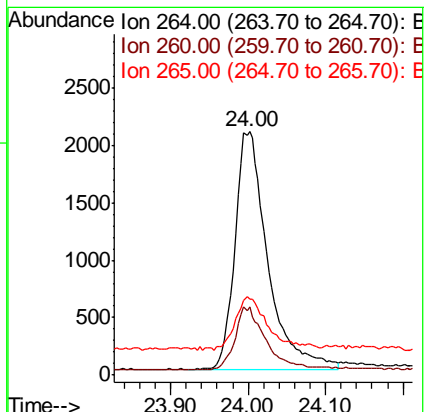
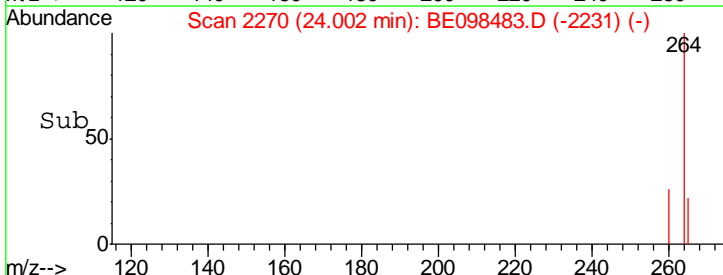


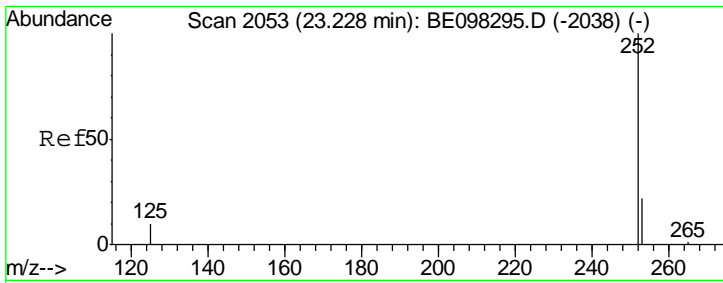
#34
 Perylene-d12
 Concen: 0.400 ng
 RT: 24.00 min Scan# 2270
 Delta R.T. -0.01 min
 Lab File: BE098483.D
 Acq: 15 Dec 2018 21:51



Tgt Ion: 264 Resp: 6096

Ion	Ratio	Lower	Upper
264	100		
260	27.8	20.2	30.2
265	31.1	25.2	37.8





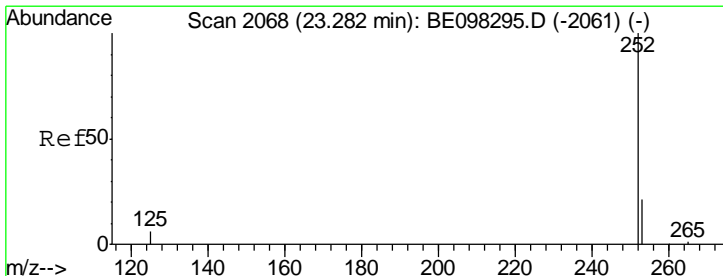
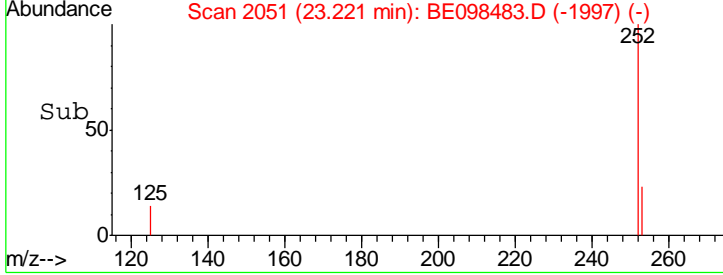
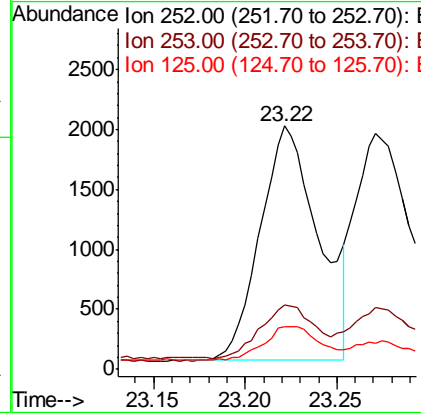
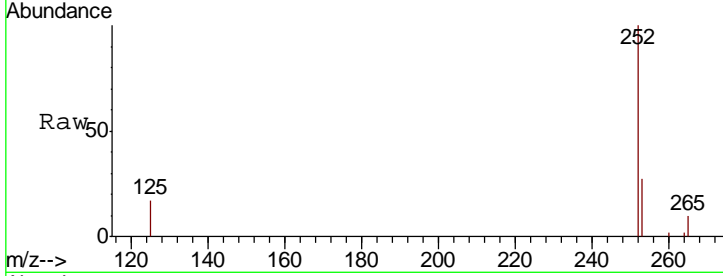
#35
 Benzo(b)fluoranthene
 Concen: 0.259 ng m
 RT: 23.22 min Scan# 2051
 Delta R.T. -0.01 min
 Lab File: BE098483.D
 Acq: 15 Dec 2018 21:51

Instrument : BNA_E
 ClientSampled : PB115688BS

Tgt Ion	Resp	Lower	Upper
252	4325		
253	26.6	20.0	30.0
125	17.3	9.6	14.4#

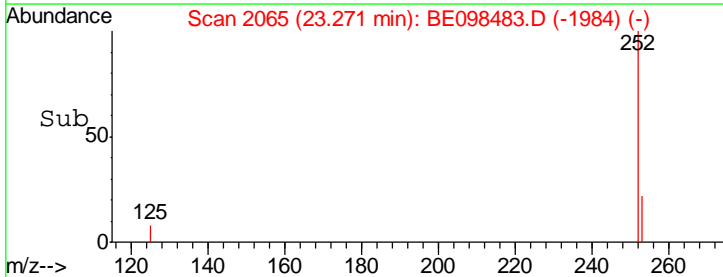
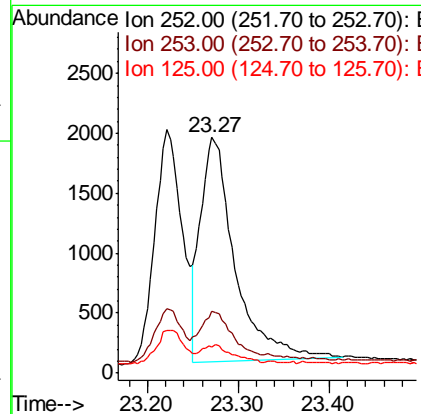
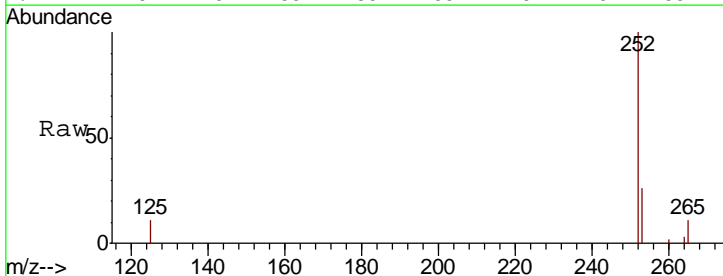
Manual Integrations
 APPROVED

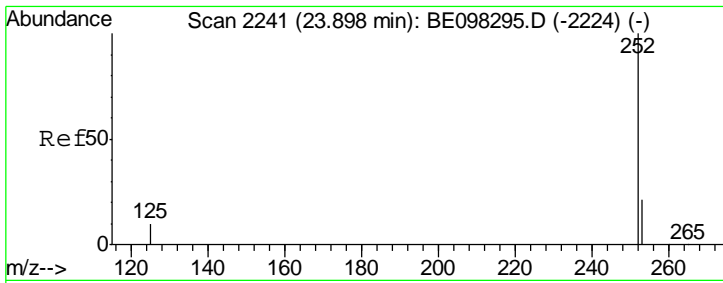
Sohil
 12/16/2018 2:03:28 PM



#36
 Benzo(k)fluoranthene
 Concen: 0.252 ng
 RT: 23.27 min Scan# 2065
 Delta R.T. -0.01 min
 Lab File: BE098483.D
 Acq: 15 Dec 2018 21:51

Tgt Ion	Resp	Lower	Upper
252	4895		
253	26.0	19.0	28.6
125	11.2	9.1	13.7



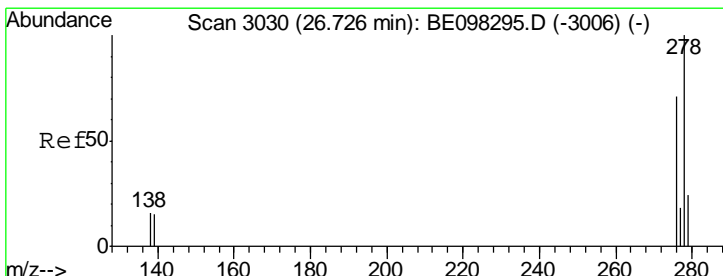
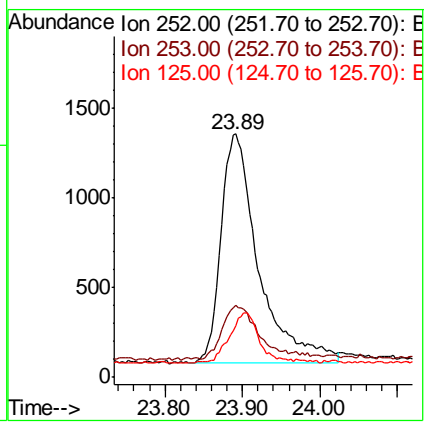
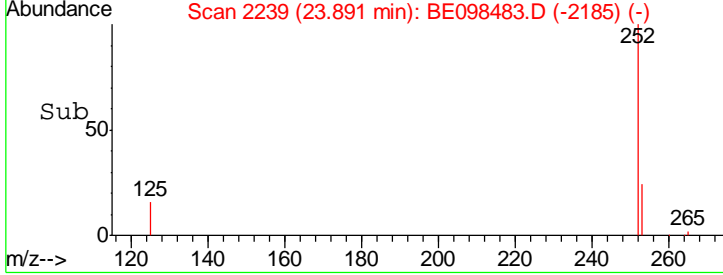
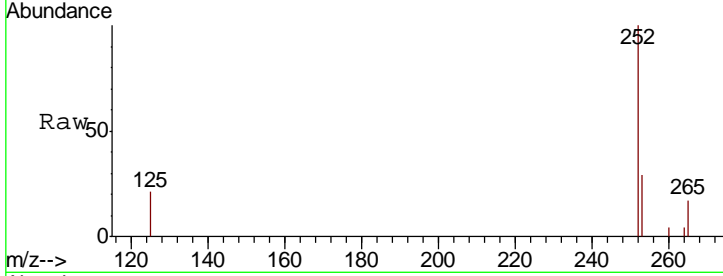


#37
 Benzo(a)pyrene
 Concen: 0.251 ng
 RT: 23.89 min Scan# 2239
 Delta R.T. -0.01 min
 Lab File: BE098483.D
 Acq: 15 Dec 2018 21:51

Instrument :
 BNA_E
 ClientSampled :
 PB115688BS

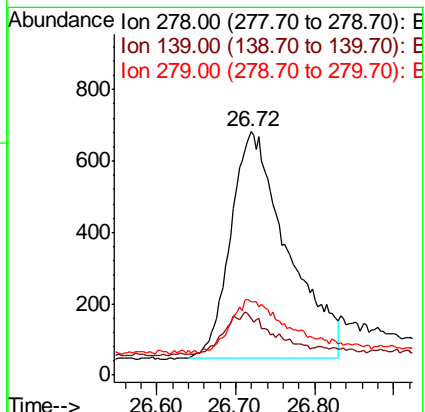
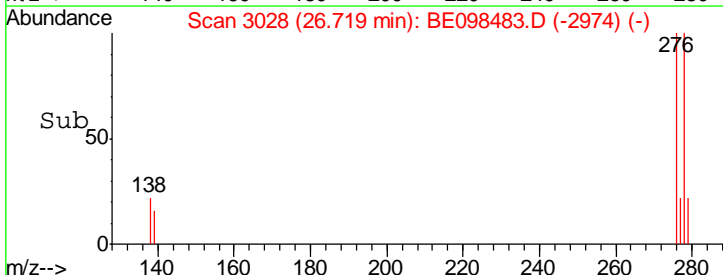
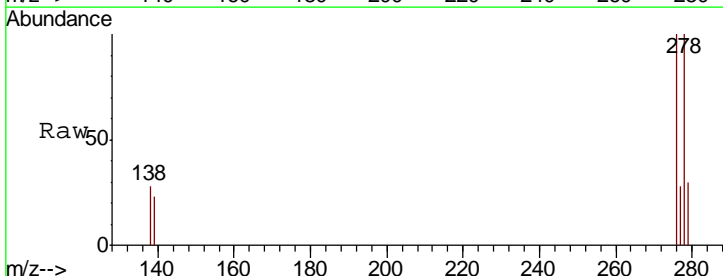
Tgt Ion	Resp	Lower	Upper
252	100		
253	29.5	20.6	30.8
125	20.9	10.5	15.7#

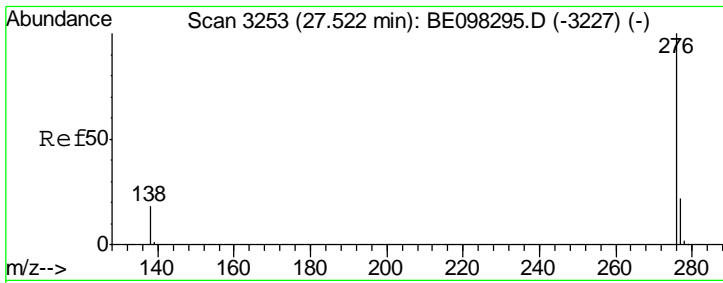
Manual Integrations
APPROVED
 Sohil
 12/16/2018 2:03:28 PM



#38
 Dibenzo(a,h)anthracene
 Concen: 0.195 ng
 RT: 26.72 min Scan# 3028
 Delta R.T. -0.01 min
 Lab File: BE098483.D
 Acq: 15 Dec 2018 21:51

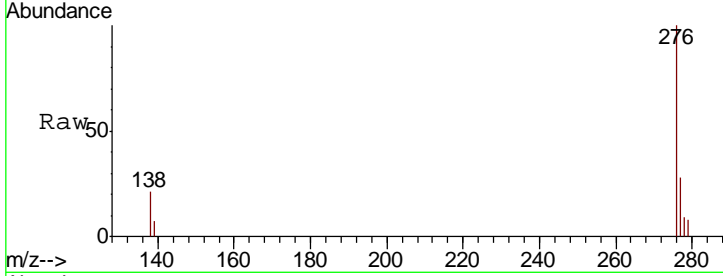
Tgt Ion	Resp	Lower	Upper
278	100		
139	23.5	14.5	21.7#
279	30.4	21.8	32.8





#39
 Benzo(a,h,i)perylene
 Concen: 0.220 ng
 RT: 27.51 min Scan# 3250
 Delta R.T. -0.01 min
 Lab File: BE098483.D
 Acq: 15 Dec 2018 21:51

Instrument :
 BNA_E
ClientSampled :
 PB115688BS



Tot Ion: 276 Resp: 3598

Ion	Ratio	Lower	Upper
276	100		
277	27.8	20.8	31.2
138	20.9	15.8	23.6

Manual Integrations
APPROVED
 Sohil
 12/16/2018 2:03:28 PM

