

Data Path : Z:\HPCHEM1\BNA E\DATA\BE121916\  
 Data File : BE092612.D  
 Acq On : 19 Dec 2016 17:56  
 Operator : UM/SJ  
 Sample : H6064-02  
 Misc :  
 ALS Vial : 14 Sample Multiplier: 1

Instrument :  
 BNA\_E  
 ClientSampleId :  
 KY038PS027-161213

Quant Time: Dec 20 00:57:50 2016  
 Quant Method : Z:\HPCHEM1\BNA E\METHODS\8270-SIM-BE121916.M  
 Quant Title : ASP BNA STANDARDS FOR 5 POINT CALIBRATION  
 QLast Update : Mon Dec 19 16:16:32 2016  
 Response via : Initial Calibration

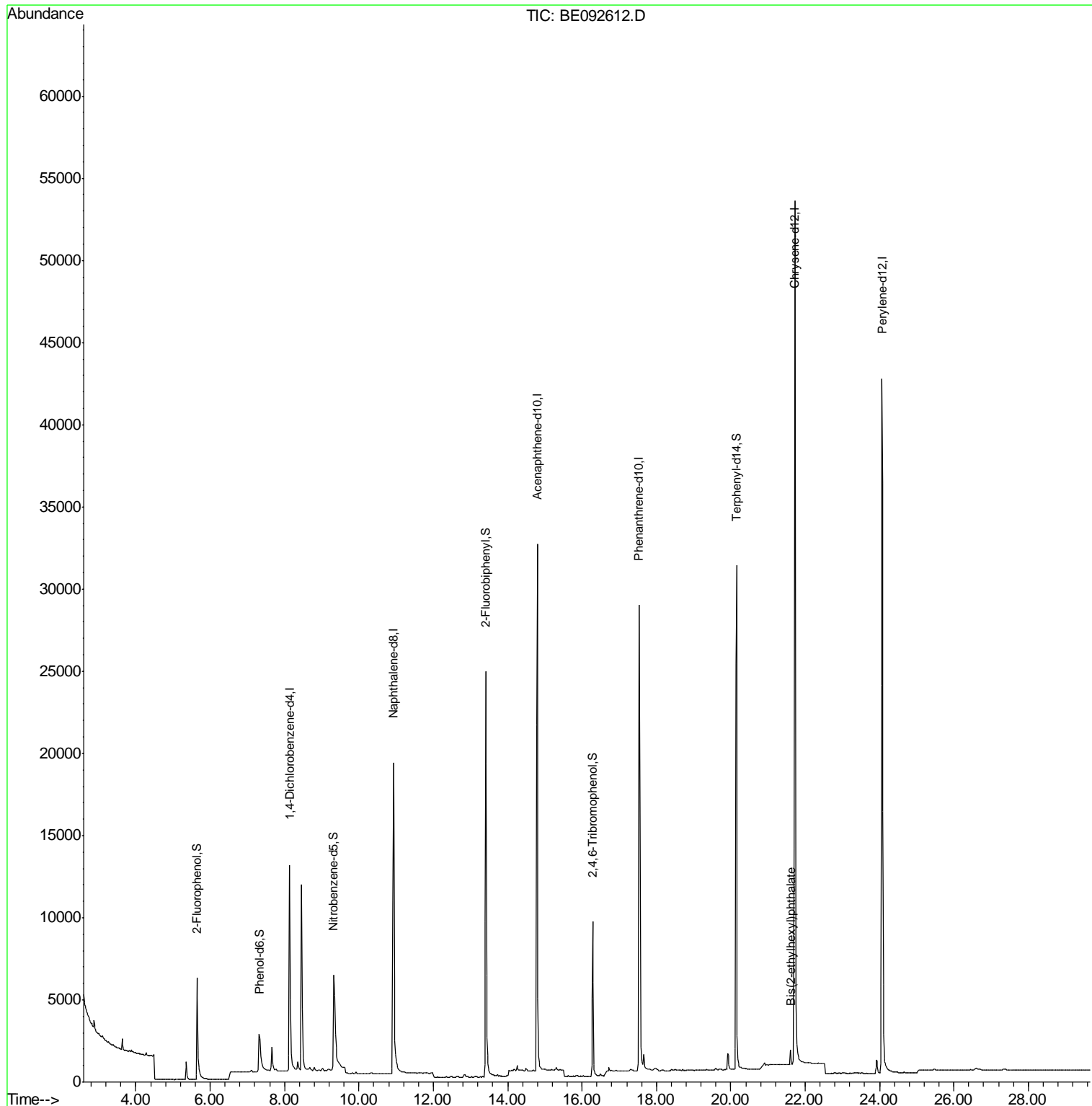
Internal Standards	R.T.	QIon	Response	Conc	Units	Dev(Min)
1) 1,4-Dichlorobenzene-d4	8.14	152	8081	5.00	ng	0.00
7) Naphthalene-d8	10.93	136	36807	5.00	ng	0.00
12) Acenaphthene-d10	14.80	164	24835	5.00	ng	0.00
18) Phenanthrene-d10	17.53	188	51253	5.00	ng	-0.02
24) Chrysene-d12	21.72	240	69830	5.00	ng	0.00
31) Perylene-d12	24.06	264	64917	5.00	ng	0.00
System Monitoring Compounds						
4) 2-Fluorophenol	5.65	112	6890	4.47	ng	-0.03
5) Phenol-d6	7.34	99	5371	2.39	ng	-0.05
8) Nitrobenzene-d5	9.32	82	11380	4.49	ng	-0.05
13) 2,4,6-Tribromophenol	16.28	330	6810	9.46	ng	-0.02
14) 2-Fluorobiphenyl	13.41	172	29999	5.05	ng	-0.02
26) Terphenyl-d14	20.16	244	49573	5.79	ng	-0.02
Target Compounds						Qvalue
29) Bis(2-ethylhexyl)phthalate	21.61	149	1005	0.22	ng	# 75

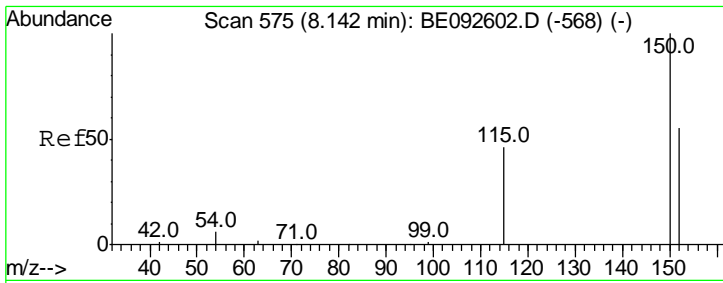
(#) = qualifier out of range (m) = manual integration (+) = signals summed

Data Path : Z:\HPCHEM1\BNA E\DATA\BE121916\  
 Data File : BE092612.D  
 Acq On : 19 Dec 2016 17:56  
 Operator : UM/SJ  
 Sample : H6064-02  
 Misc :  
 ALS Vial : 14 Sample Multiplier: 1

Instrument :  
 BNA\_E  
 ClientSampleId :  
 KY038PS027-161213

Quant Time: Dec 20 00:57:50 2016  
 Quant Method : Z:\HPCHEM1\BNA E\METHODS\8270-SIM-BE121916.M  
 Quant Title : ASP BNA STANDARDS FOR 5 POINT CALIBRATION  
 QLast Update : Mon Dec 19 16:16:32 2016  
 Response via : Initial Calibration

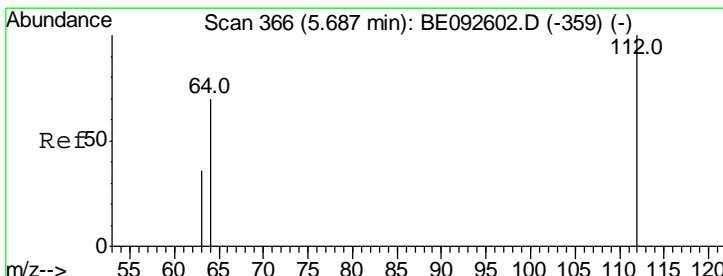
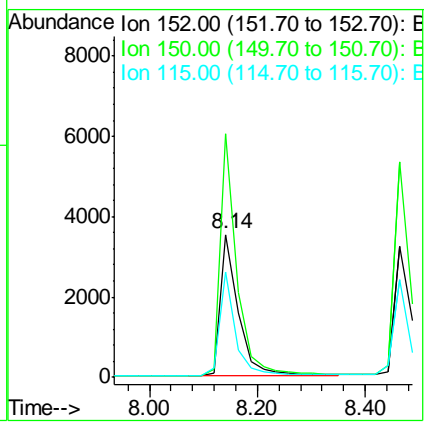
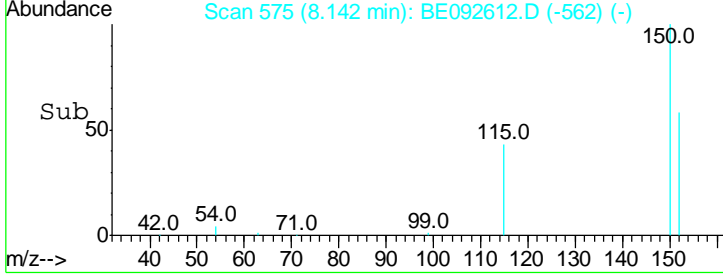
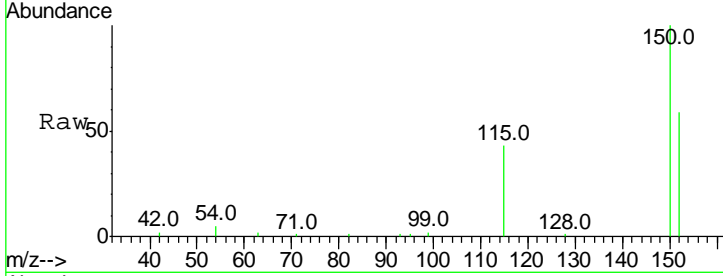




#1  
 1,4-Dichlorobenzene-d4  
 Concen: 5.00 ng  
 RT: 8.14 min Scan# 575  
 Delta R.T. -0.00 min  
 Lab File: BE092612.D  
 Acq: 19 Dec 2016 17:56

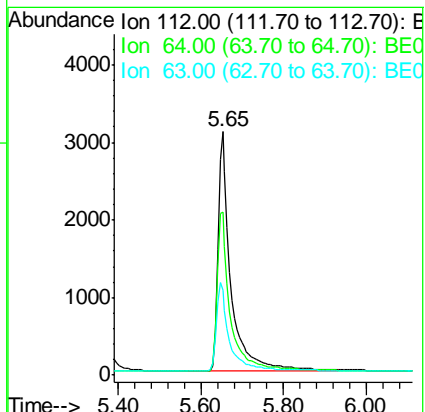
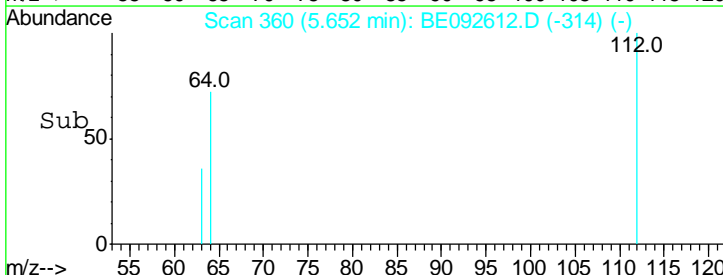
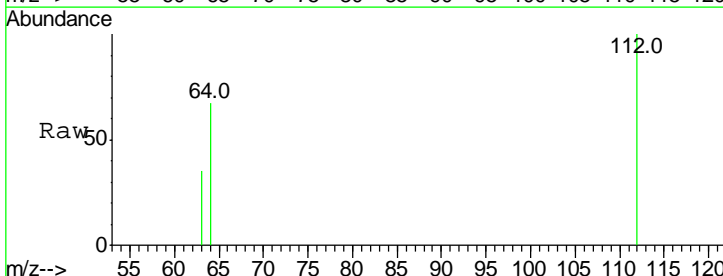
**Instrument :**  
 BNA\_E  
**ClientSampled :**  
 KY038PS027-161213

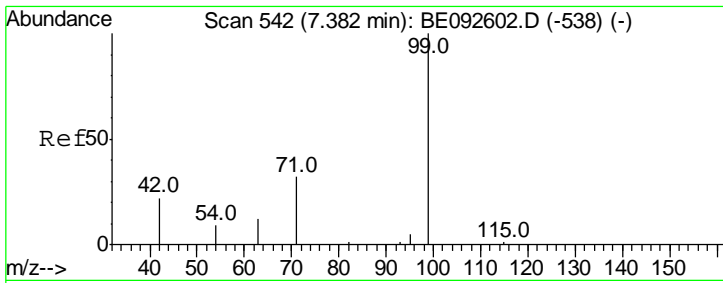
Tgt Ion	Resp	Lower	Upper
152	100		
150	170.3	106.0	159.0#
115	73.5	31.2	46.8#



#4  
 2-Fluorophenol  
 Concen: 4.47 ng  
 RT: 5.65 min Scan# 360  
 Delta R.T. -0.03 min  
 Lab File: BE092612.D  
 Acq: 19 Dec 2016 17:56

Tgt Ion	Resp	Lower	Upper
112	100		
64	69.7	53.5	80.3
63	37.4	27.9	41.9

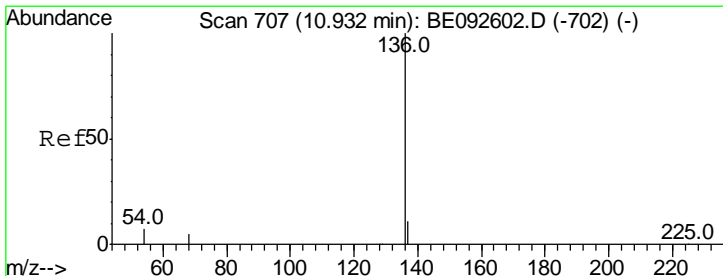
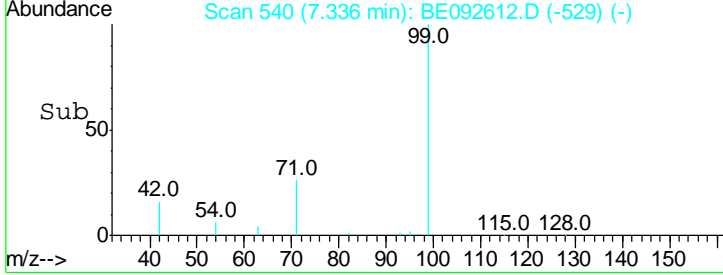
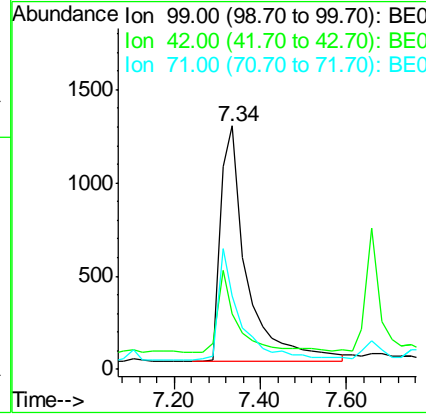
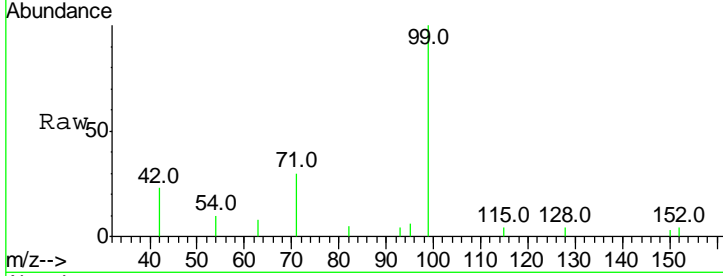




#5  
 Phenol-d6  
 Concen: 2.39 ng  
 RT: 7.34 min Scan# 540  
 Delta R.T. -0.05 min  
 Lab File: BE092612.D  
 Acq: 19 Dec 2016 17:56

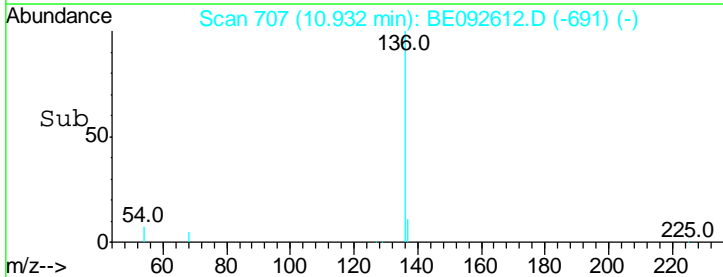
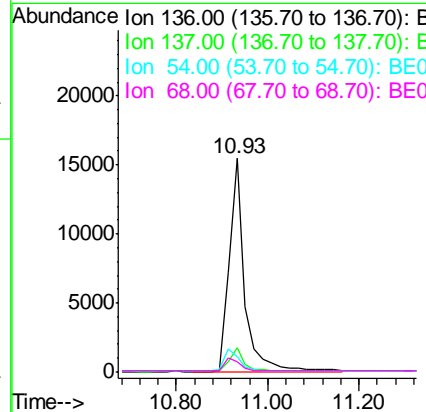
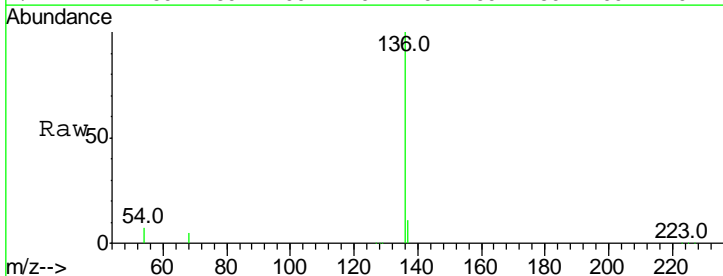
Instrument :  
 BNA\_E  
 ClientSampleId :  
 KY038PS027-161213

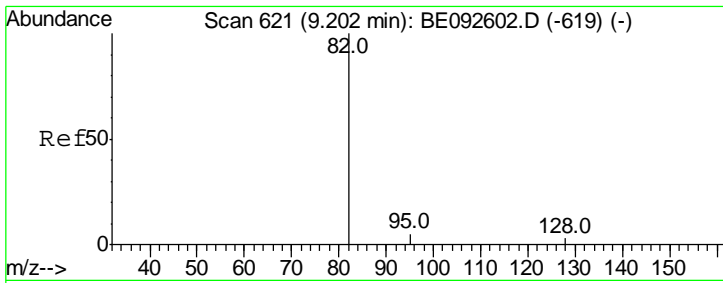
Tgt Ion	Resp	Lower	Upper
99	100		
42	0.0	16.0	24.0#
71	0.0	30.6	45.8#



#7  
 Naphthalene-d8  
 Concen: 5.00 ng  
 RT: 10.93 min Scan# 707  
 Delta R.T. -0.00 min  
 Lab File: BE092612.D  
 Acq: 19 Dec 2016 17:56

Tgt Ion	Resp	Lower	Upper
136	100		
137	11.5	8.2	12.4
54	7.0	9.6	14.4#
68	5.1	6.7	10.1#

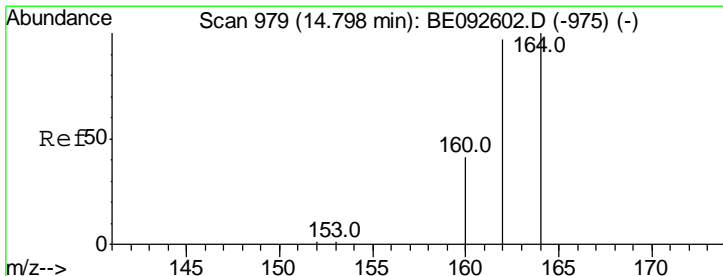
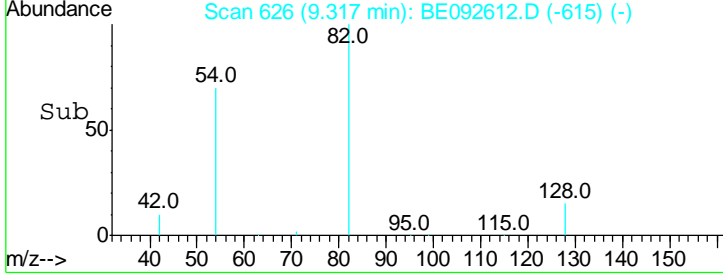
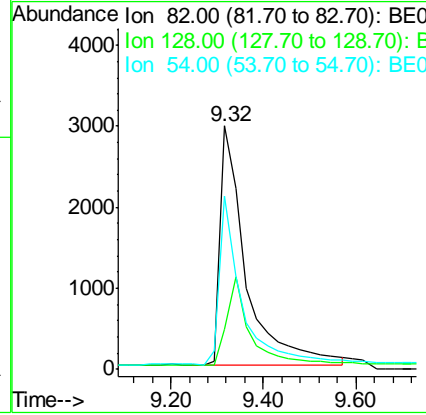
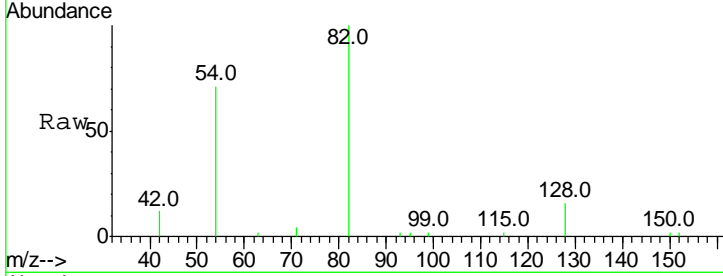




#8  
 Nitrobenzene-d5  
 Concen: 4.49 ng  
 RT: 9.32 min Scan# 626  
 Delta R.T. -0.05 min  
 Lab File: BE092612.D  
 Acq: 19 Dec 2016 17:56

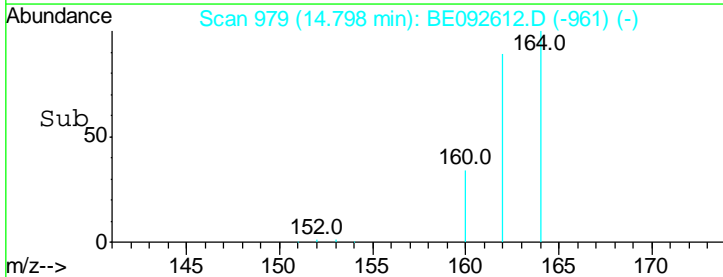
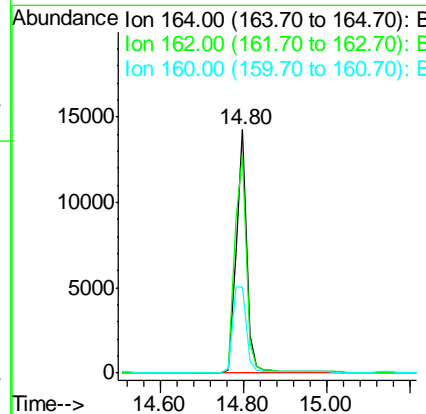
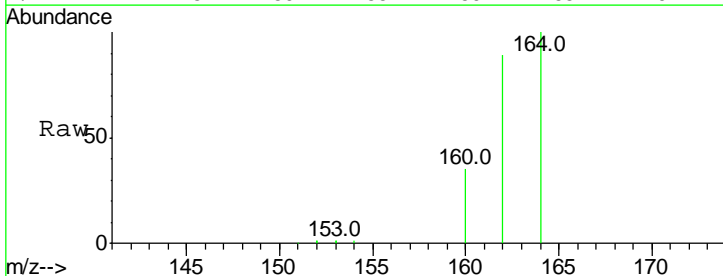
**Instrument :**  
 BNA\_E  
**ClientSampleId :**  
 KY038PS027-161213

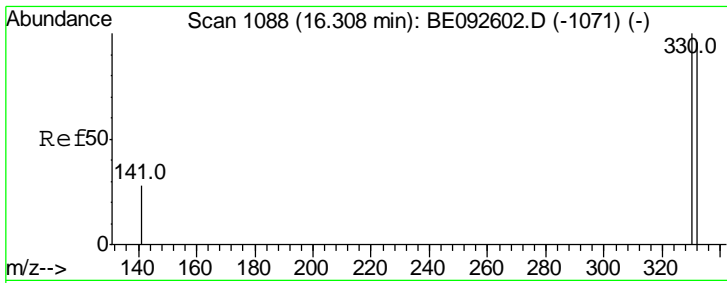
Tgt Ion	Resp	Lower	Upper
82	11380		
128	16.3	39.0	58.4#
54	71.0	44.8	67.2#



#12  
 Acenaphthene-d10  
 Concen: 5.00 ng  
 RT: 14.80 min Scan# 979  
 Delta R.T. 0.00 min  
 Lab File: BE092612.D  
 Acq: 19 Dec 2016 17:56

Tgt Ion	Resp	Lower	Upper
164	24835		
162	89.4	71.4	107.0
160	35.5	27.4	41.2

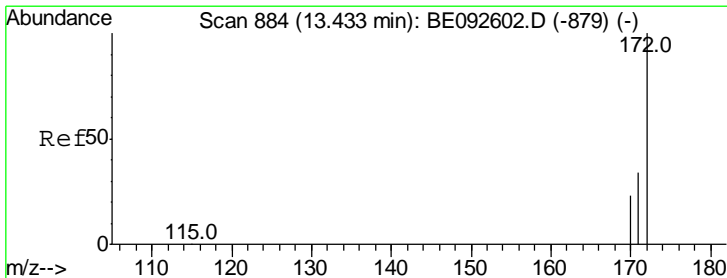
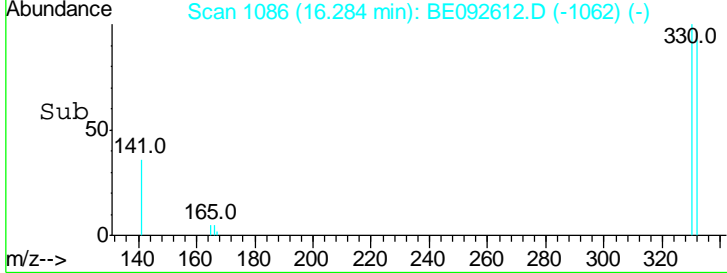
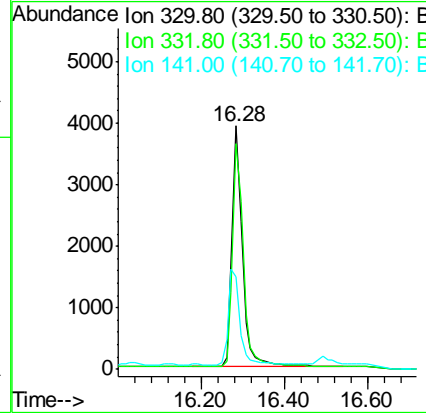
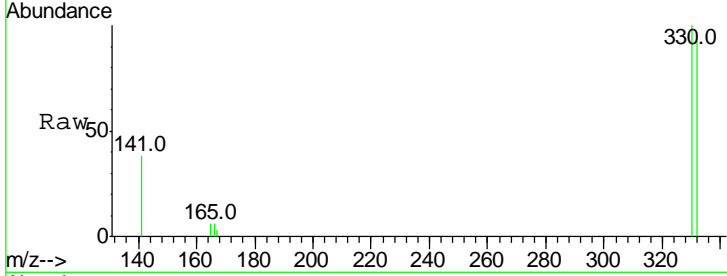




#13  
 2,4,6-Tribromophenol  
 Concen: 9.46 ng  
 RT: 16.28 min Scan# 1086  
 Delta R.T. -0.02 min  
 Lab File: BE092612.D  
 Acq: 19 Dec 2016 17:56

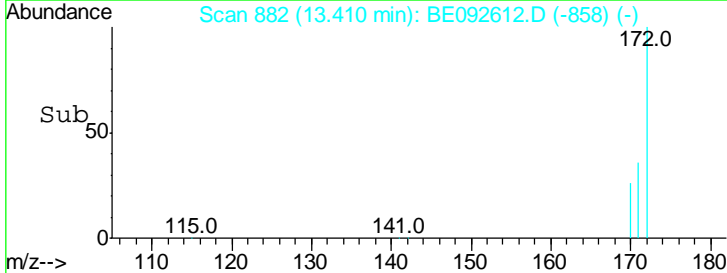
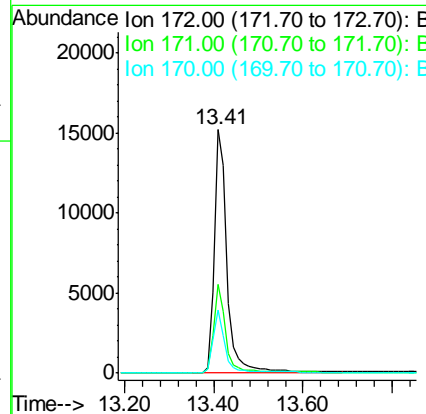
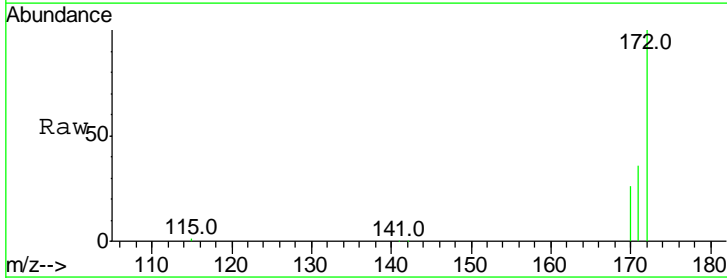
Instrument :  
 BNA\_E  
 ClientSampleId :  
 KY038PS027-161213

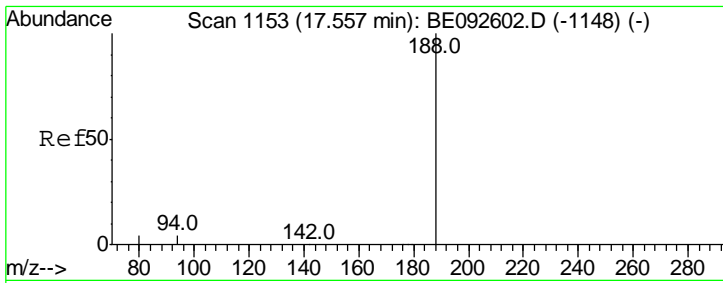
Tgt Ion	Resp	Lower	Upper
330	100		
332	96.8	75.4	113.0
141	45.3	31.0	46.6



#14  
 2-Fluorobiphenyl  
 Concen: 5.05 ng  
 RT: 13.41 min Scan# 882  
 Delta R.T. -0.02 min  
 Lab File: BE092612.D  
 Acq: 19 Dec 2016 17:56

Tgt Ion	Resp	Lower	Upper
172	100		
171	36.4	30.1	45.1
170	26.0	21.8	32.6

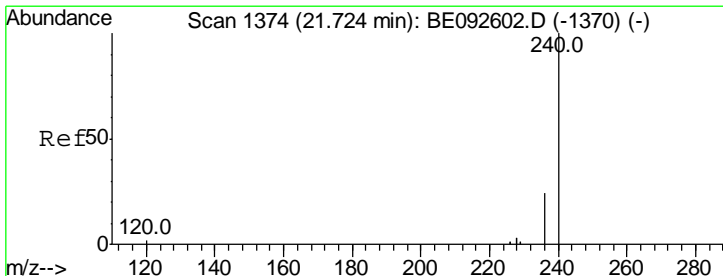
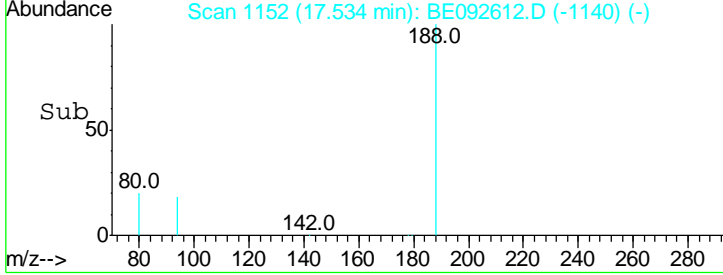
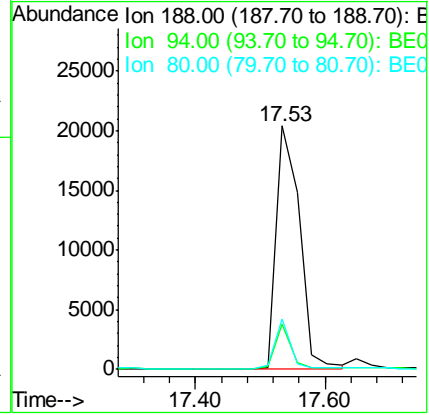
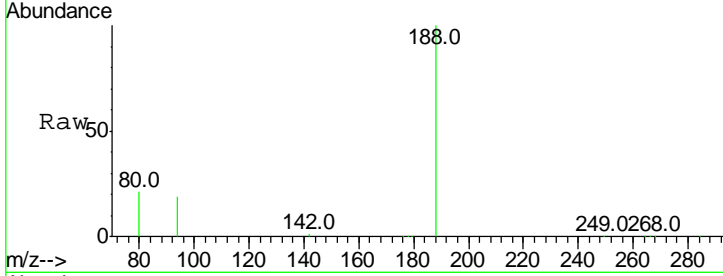




#18  
 Phenanthrene-d10  
 Concen: 5.00 ng  
 RT: 17.53 min Scan# 1152  
 Delta R.T. -0.02 min  
 Lab File: BE092612.D  
 Acq: 19 Dec 2016 17:56

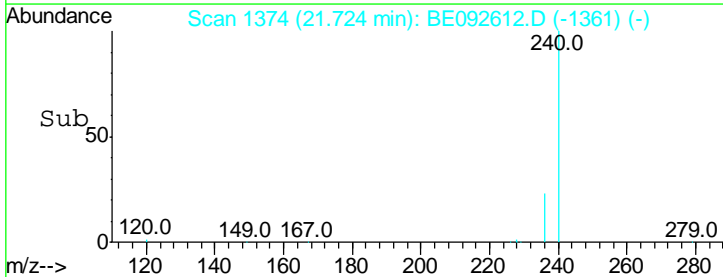
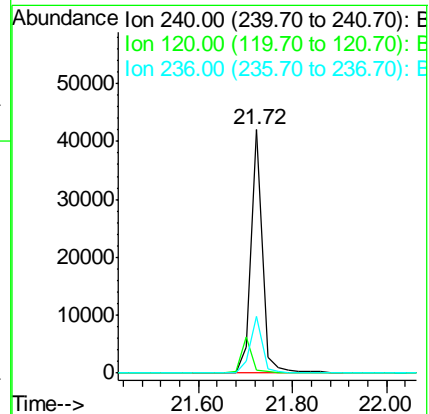
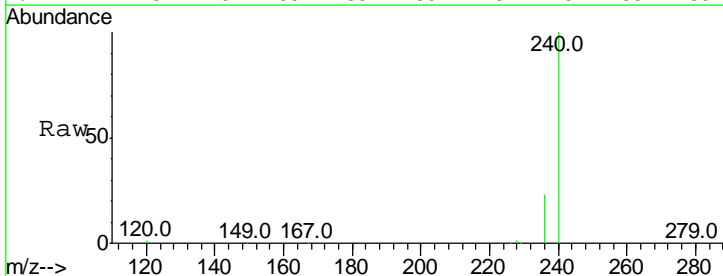
Instrument :  
 BNA\_E  
 ClientSampleId :  
 KY038PS027-161213

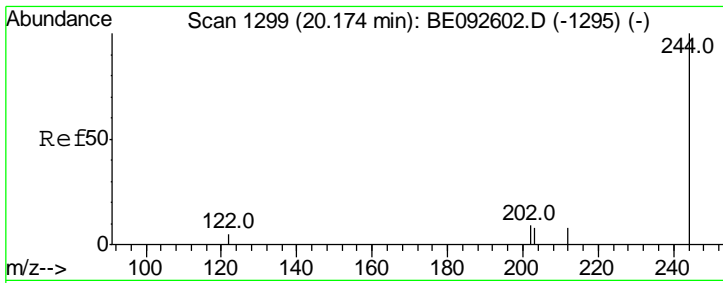
Tgt Ion	Resp	Lower	Upper
188	100		
94	18.6	3.2	4.8#
80	20.7	2.6	3.8#



#24  
 Chrysene-d12  
 Concen: 5.00 ng  
 RT: 21.72 min Scan# 1374  
 Delta R.T. -0.00 min  
 Lab File: BE092612.D  
 Acq: 19 Dec 2016 17:56

Tgt Ion	Resp	Lower	Upper
240	100		
120	1.4	2.6	4.0#
236	23.2	24.6	37.0#

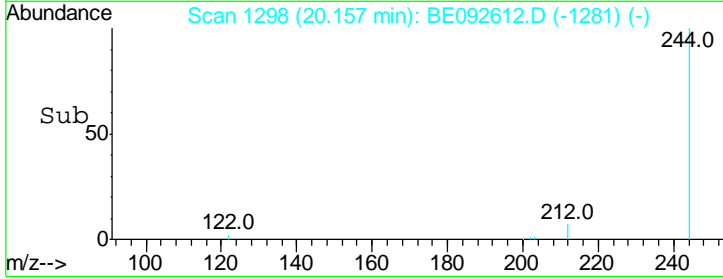
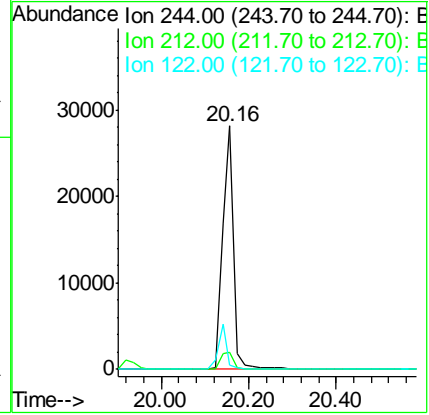
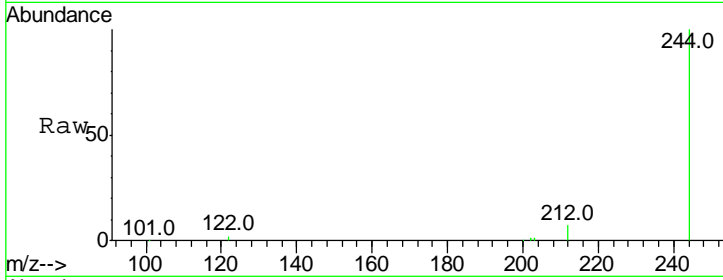




#26  
 Terphenyl-d14  
 Concen: 5.79 ng  
 RT: 20.16 min Scan# 1298  
 Delta R.T. -0.02 min  
 Lab File: BE092612.D  
 Acq: 19 Dec 2016 17:56

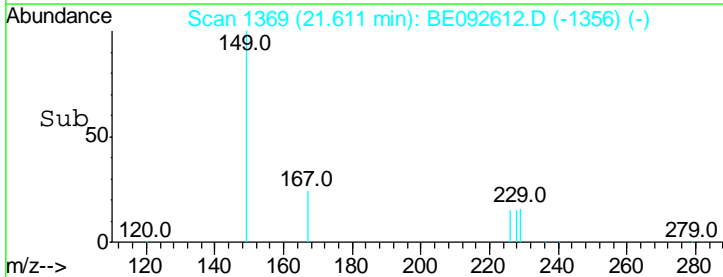
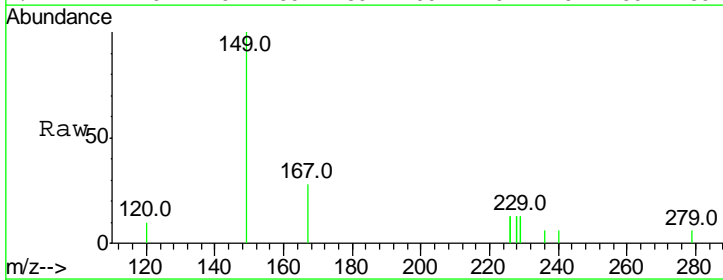
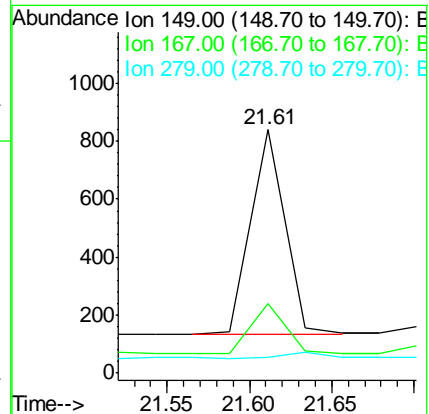
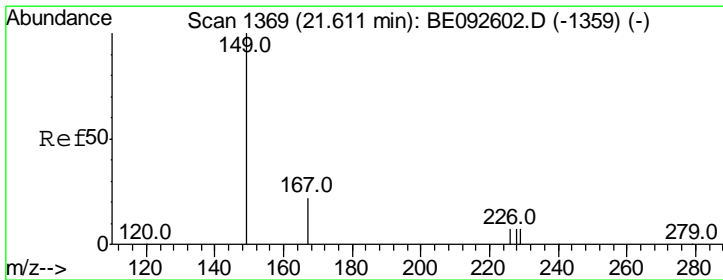
**Instrument :**  
 BNA\_E  
**ClientSampleId :**  
 KY038PS027-161213

Tgt Ion	Resp	Lower	Upper
244	100		
212	7.0	6.7	10.1
122	2.0	3.6	5.4#

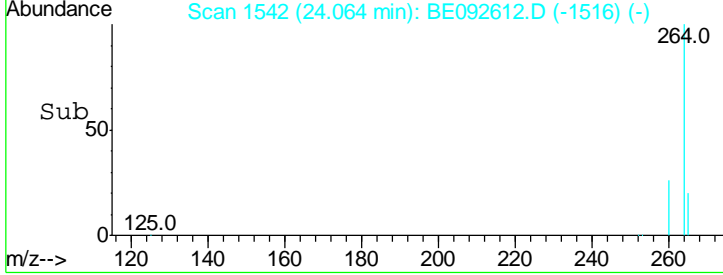
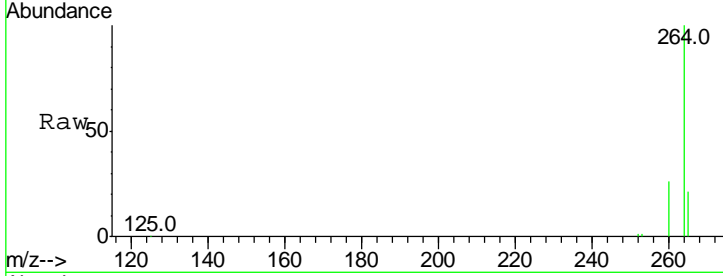
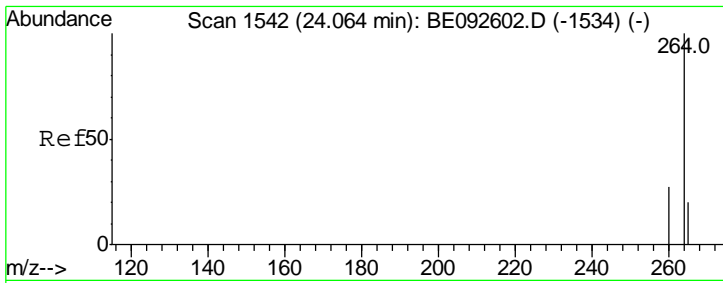


#29  
 Bis(2-ethylhexyl)phthalate  
 Concen: 0.22 ng  
 RT: 21.61 min Scan# 1369  
 Delta R.T. 0.00 min  
 Lab File: BE092612.D  
 Acq: 19 Dec 2016 17:56

Tgt Ion	Resp	Lower	Upper
149	100		
167	23.4	16.0	24.0
279	0.0	16.0	24.0#







#31  
 Perylene-d12  
 Concen: 5.00 ng  
 RT: 24.06 min Scan# 1542  
 Delta R.T. -0.00 min  
 Lab File: BE092612.D  
 Acq: 19 Dec 2016 17:56

Instrument :  
 BNA\_E  
 ClientSampleId :  
 KY038PS027-161213

Tot Ion: 264 Resp: 64917

Ion	Ratio	Lower	Upper
264	100		
260	25.9	20.1	30.1
265	20.9	17.9	26.9

