

Data Path : Z:\svoasrv\HPCHEM1\BNA_F\Data\BF010423\
 Data File : BF131910.D
 Acq On : 04 Jan 2023 21:22
 Operator : CG\JU
 Sample : 01001-02
 Misc :
 ALS Vial : 18 Sample Multiplier: 1

Instrument :
 BNA_F
 ClientSampleId :
 TP-C2

Quant Time: Jan 05 05:46:23 2023
 Quant Method : Z:\svoasrv\HPCHEM1\BNA_F\Methods\8270-BF122422.M
 Quant Title : ASP BNA STANDARDS FOR 5 POINT CALIBRATION
 QLast Update : Fri Dec 30 02:06:40 2022
 Response via : Initial Calibration

Compound	R.T.	QIon	Response	Conc Units	Dev(Min)
Internal Standards					
1) 1,4-Dichlorobenzene-d4	6.816	152	66934	20.000 ng	0.00
21) Naphthalene-d8	8.098	136	239091	20.000 ng	-0.01
39) Acenaphthene-d10	9.863	164	128307	20.000 ng	-0.01
64) Phenanthrene-d10	11.357	188	211239	20.000 ng	0.00
76) Chrysene-d12	14.010	240	134835	20.000 ng	0.00
86) Perylene-d12	15.486	264	159428	20.000 ng	0.00
System Monitoring Compounds					
5) 2-Fluorophenol	5.440	112	582486	144.218 ng	0.02
7) Phenol-d6	6.451	99	688751	129.796 ng	0.00
23) Nitrobenzene-d5	7.387	82	561574	93.777 ng	0.00
42) 2,4,6-Tribromophenol	10.657	330	200047	143.500 ng	-0.01
45) 2-Fluorobiphenyl	9.186	172	962213	102.720 ng	0.00
79) Terphenyl-d14	12.951	244	741384	93.007 ng	0.00

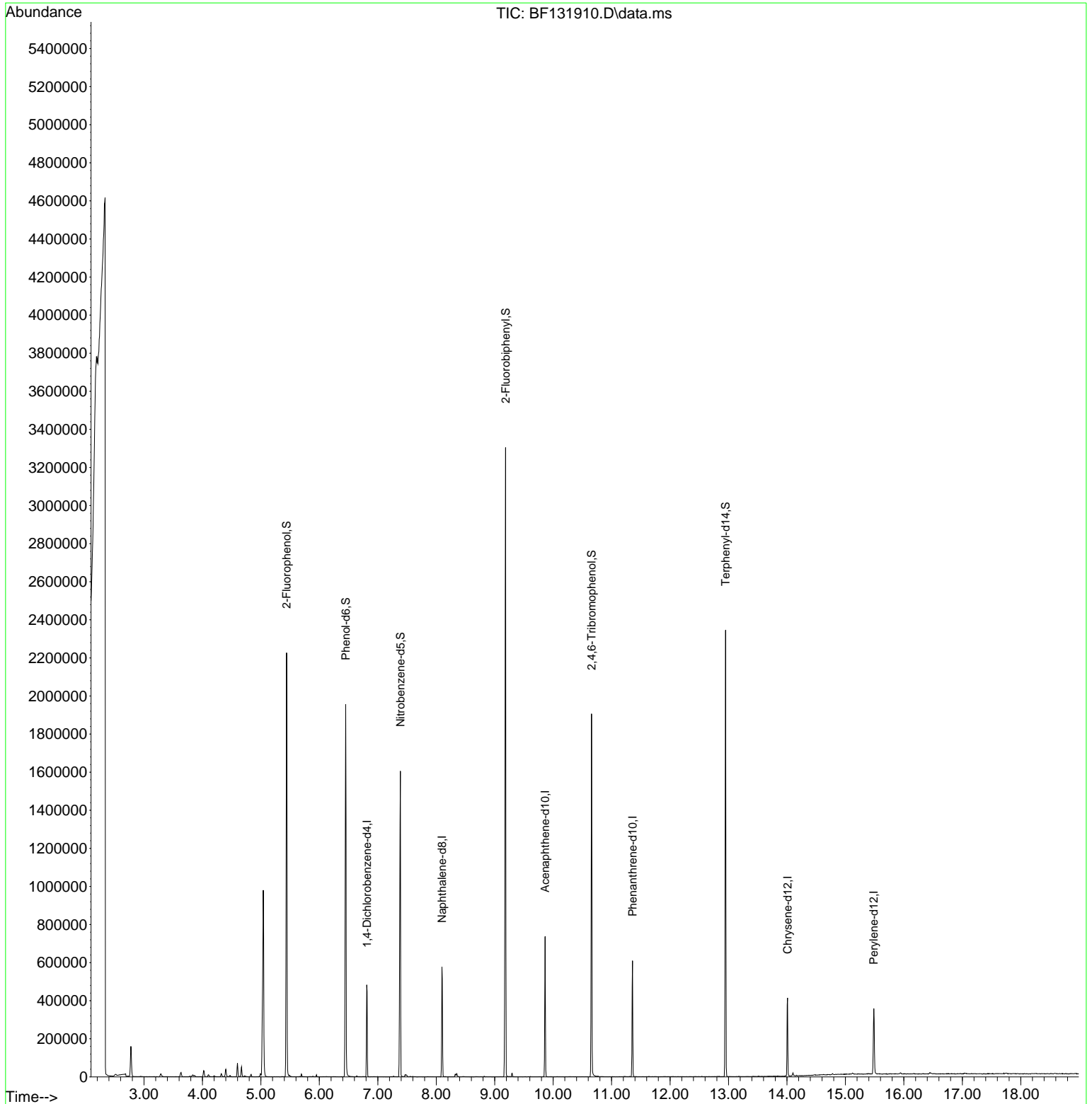
Target Compounds Qvalue

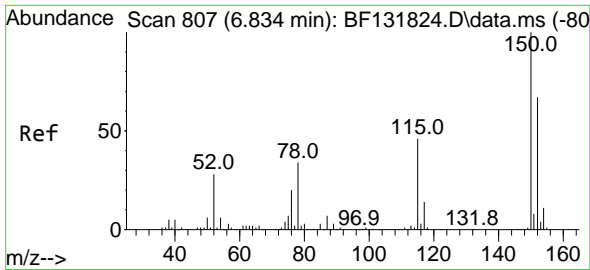
(#) = qualifier out of range (m) = manual integration (+) = signals summed

Data Path : Z:\svoasrv\HPCHEM1\BNA_F\Data\BF010423\
 Data File : BF131910.D
 Acq On : 04 Jan 2023 21:22
 Operator : CG\JU
 Sample : 01001-02
 Misc :
 ALS Vial : 18 Sample Multiplier: 1

Instrument :
 BNA_F
 ClientSampleId :
 TP-C2

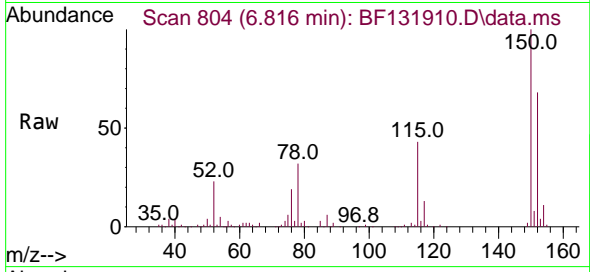
Quant Time: Jan 05 05:46:23 2023
 Quant Method : Z:\svoasrv\HPCHEM1\BNA_F\Methods\8270-BF122422.M
 Quant Title : ASP BNA STANDARDS FOR 5 POINT CALIBRATION
 QLast Update : Fri Dec 30 02:06:40 2022
 Response via : Initial Calibration



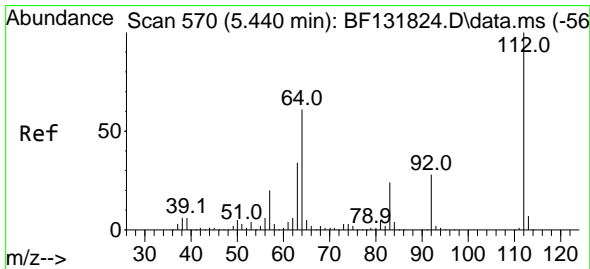
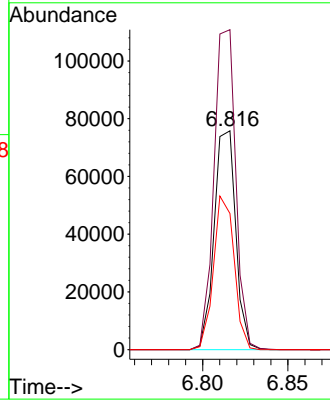
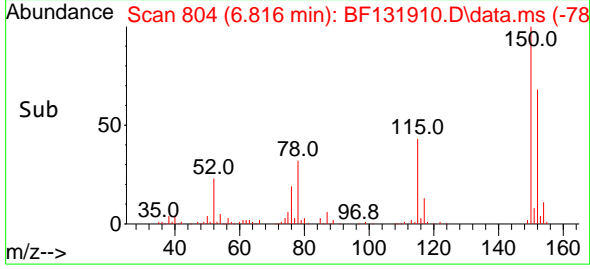


#1
 1,4-Dichlorobenzene-d4
 Concen: 20.000 ng
 RT: 6.816 min Scan# 80
 Delta R.T. 0.000 min
 Lab File: BF131910.D
 Acq: 04 Jan 2023 21:22

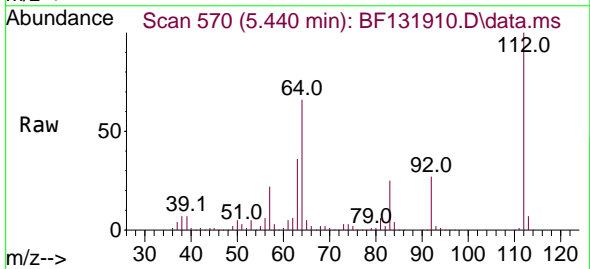
Instrument :
 BNA_F
 ClientSampleId :
 TP-C2



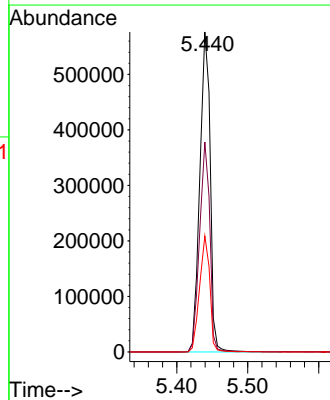
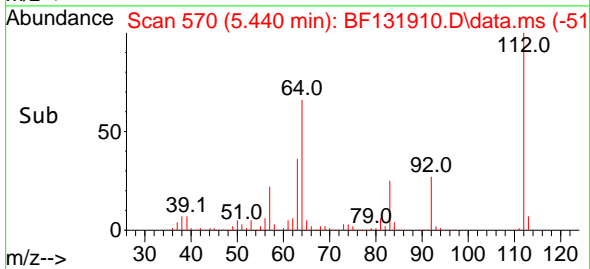
Tgt Ion:152 Resp: 66934
 Ion Ratio Lower Upper
 152 100
 150 146.3 120.0 180.0
 115 62.2 55.1 82.7

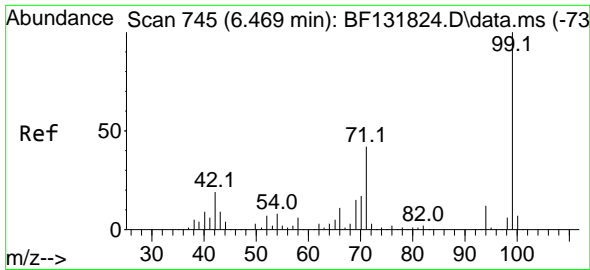


#5
 2-Fluorophenol
 Concen: 144.218 ng
 RT: 5.440 min Scan# 570
 Delta R.T. 0.018 min
 Lab File: BF131910.D
 Acq: 04 Jan 2023 21:22



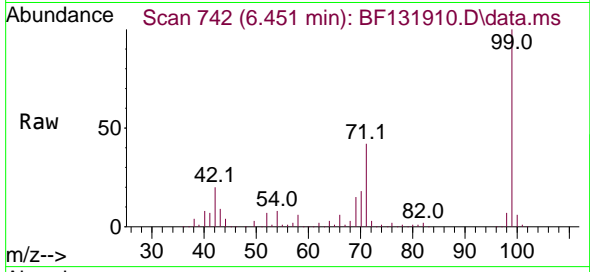
Tgt Ion:112 Resp: 582486
 Ion Ratio Lower Upper
 112 100
 64 65.6 49.2 73.8
 63 36.2 27.5 41.3



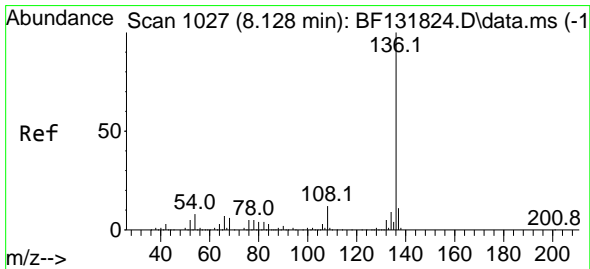
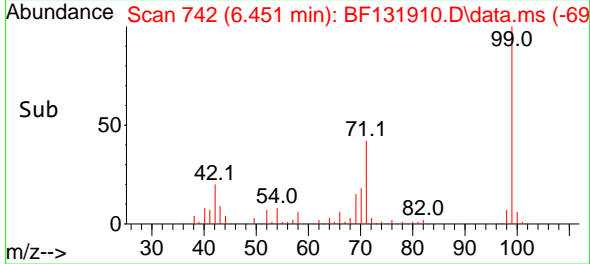
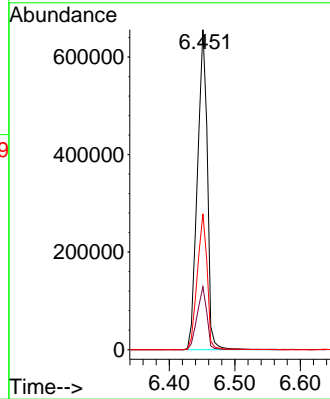


#7
 Phenol-d6
 Concen: 129.796 ng
 RT: 6.451 min Scan# 74
 Delta R.T. -0.000 min
 Lab File: BF131910.D
 Acq: 04 Jan 2023 21:22

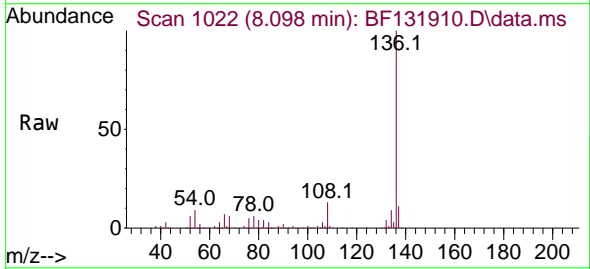
Instrument :
 BNA_F
 ClientSampleId :
 TP-C2



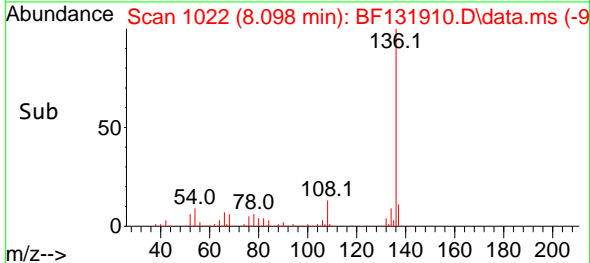
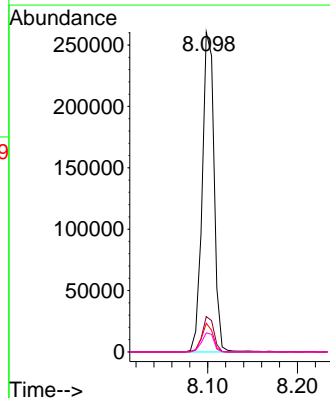
Tgt Ion: 99 Resp: 688751
 Ion Ratio Lower Upper
 99 100
 42 19.6 15.3 22.9
 71 42.4 33.5 50.3

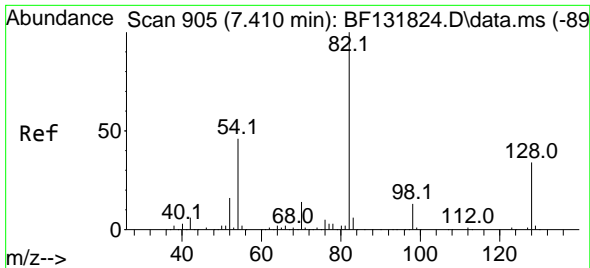


#21
 Naphthalene-d8
 Concen: 20.000 ng
 RT: 8.098 min Scan# 1022
 Delta R.T. -0.012 min
 Lab File: BF131910.D
 Acq: 04 Jan 2023 21:22



Tgt Ion: 136 Resp: 239091
 Ion Ratio Lower Upper
 136 100
 137 11.0 8.6 12.8
 54 8.9 6.7 10.1
 68 5.9 4.8 7.2



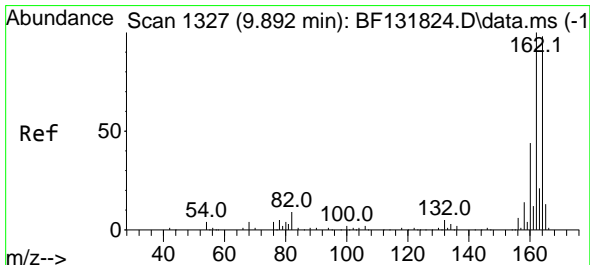
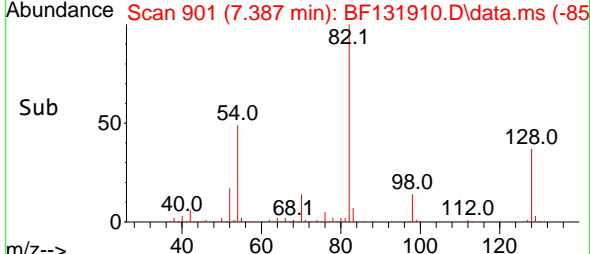
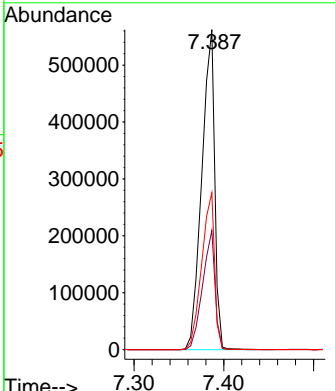
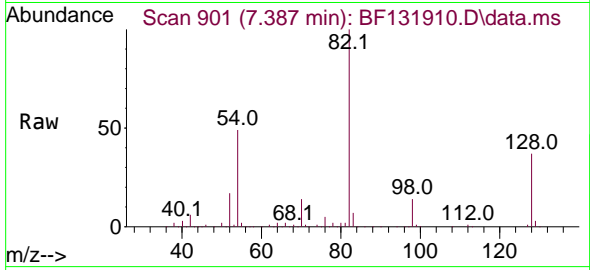


#23
 Nitrobenzene-d5
 Concen: 93.777 ng
 RT: 7.387 min Scan# 90
 Delta R.T. -0.006 min
 Lab File: BF131910.D
 Acq: 04 Jan 2023 21:22

Instrument :
 BNA_F
 ClientSampleId :
 TP-C2

Tgt Ion: 82 Resp: 561574

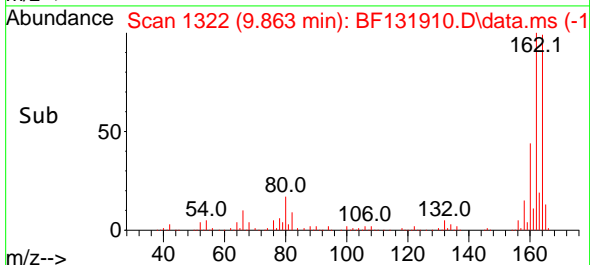
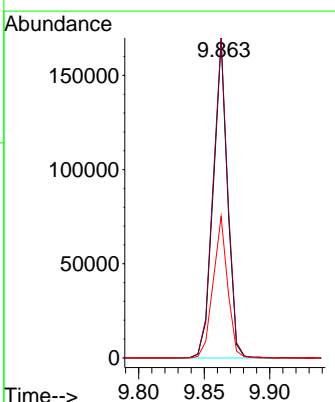
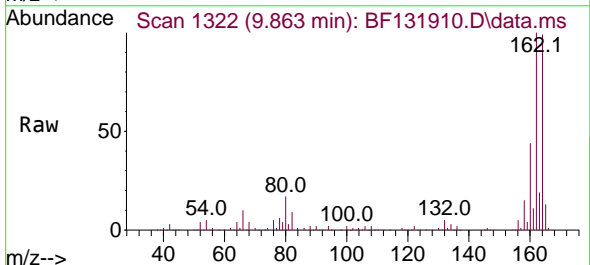
Ion	Ratio	Lower	Upper
82	100		
128	37.2	27.1	40.7
54	49.0	37.0	55.6

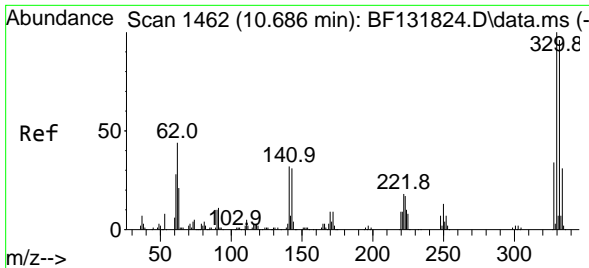


#39
 Acenaphthene-d10
 Concen: 20.000 ng
 RT: 9.863 min Scan# 1322
 Delta R.T. -0.012 min
 Lab File: BF131910.D
 Acq: 04 Jan 2023 21:22

Tgt Ion: 164 Resp: 128307

Ion	Ratio	Lower	Upper
164	100		
162	101.0	81.8	122.6
160	44.6	35.7	53.5

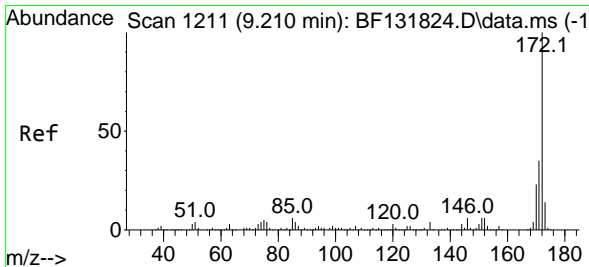
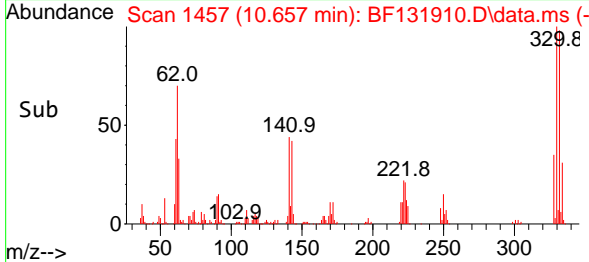
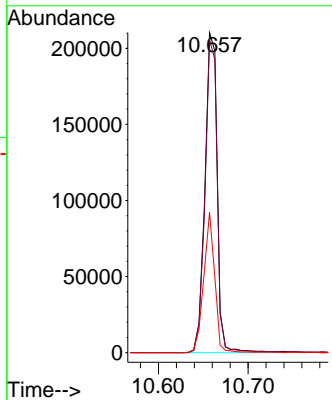
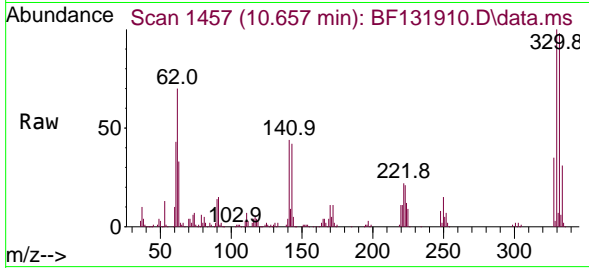




#42
 2,4,6-Tribromophenol
 Concen: 143.500 ng
 RT: 10.657 min Scan# 1462
 Delta R.T. -0.012 min
 Lab File: BF131910.D
 Acq: 04 Jan 2023 21:22

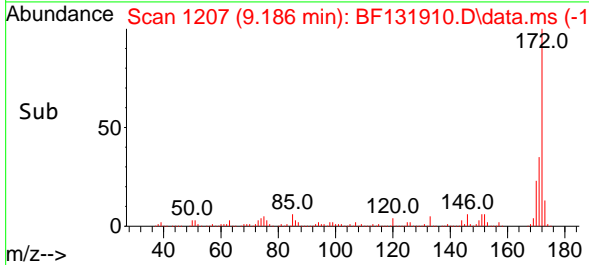
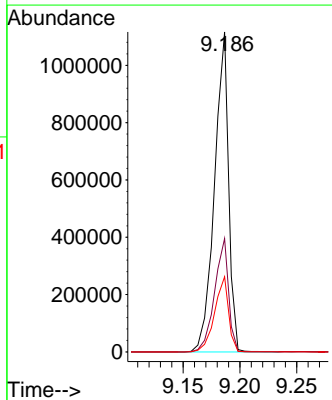
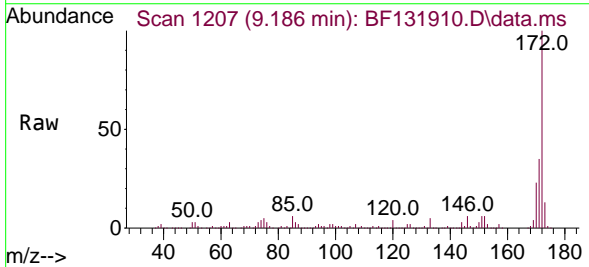
Instrument :
 BNA_F
 ClientSampleId :
 TP-C2

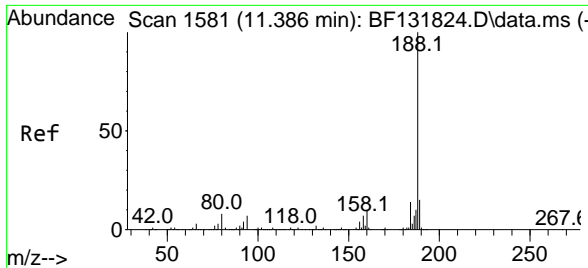
Tgt Ion:330 Resp: 200047
 Ion Ratio Lower Upper
 330 100
 332 96.7 77.0 115.4
 141 39.3 31.0 46.4



#45
 2-Fluorobiphenyl
 Concen: 102.720 ng
 RT: 9.186 min Scan# 1207
 Delta R.T. -0.006 min
 Lab File: BF131910.D
 Acq: 04 Jan 2023 21:22

Tgt Ion:172 Resp: 962213
 Ion Ratio Lower Upper
 172 100
 171 35.4 27.9 41.9
 170 23.5 18.7 28.1



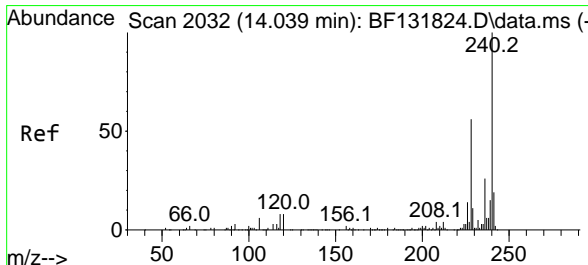
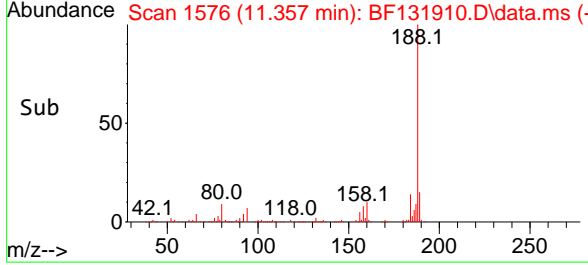
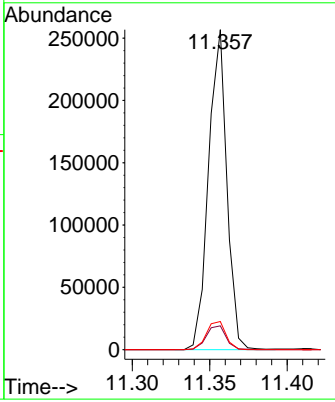
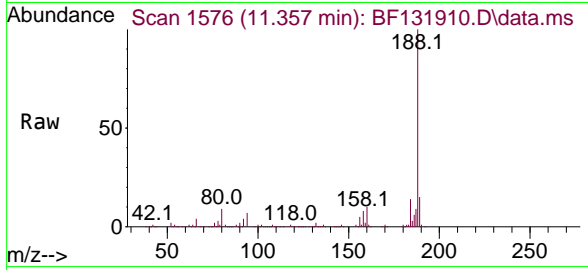


#64
 Phenanthrene-d10
 Concen: 20.000 ng
 RT: 11.357 min Scan# 11
 Delta R.T. -0.006 min
 Lab File: BF131910.D
 Acq: 04 Jan 2023 21:22

Instrument : BNA_F
 ClientSampleId : TP-C2

Tgt Ion:188 Resp: 211239

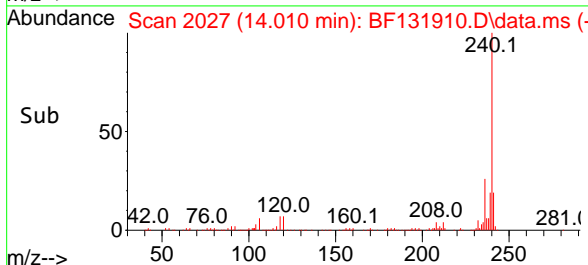
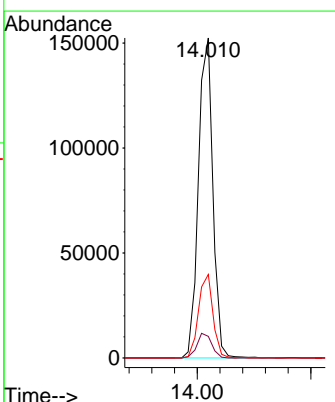
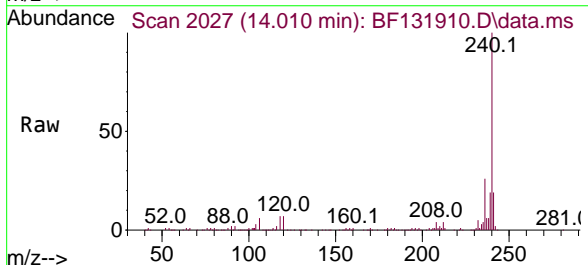
Ion	Ratio	Lower	Upper
188	100		
94	7.4	5.8	8.6
80	8.8	6.7	10.1

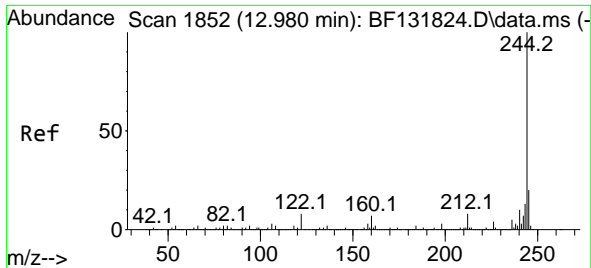


#76
 Chrysene-d12
 Concen: 20.000 ng
 RT: 14.010 min Scan# 2027
 Delta R.T. -0.006 min
 Lab File: BF131910.D
 Acq: 04 Jan 2023 21:22

Tgt Ion:240 Resp: 134835

Ion	Ratio	Lower	Upper
240	100		
120	6.8	6.7	10.1
236	26.1	20.6	31.0

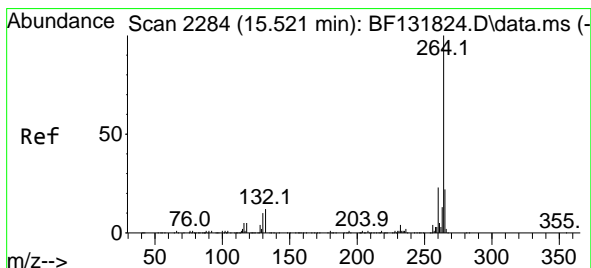
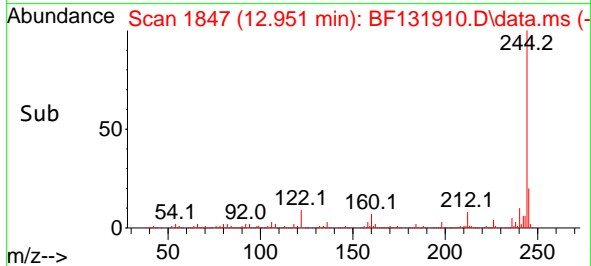
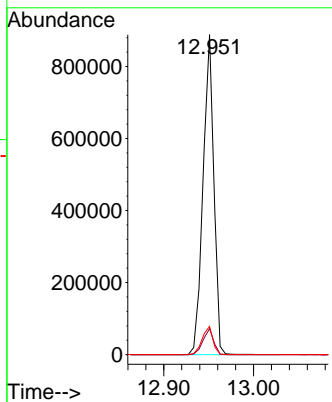
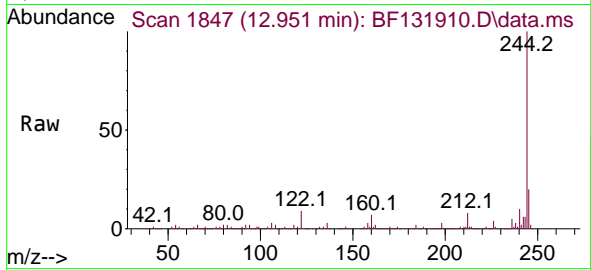




#79
 Terphenyl-d14
 Concen: 93.007 ng
 RT: 12.951 min Scan# 1852
 Delta R.T. -0.006 min
 Lab File: BF131910.D
 Acq: 04 Jan 2023 21:22

Instrument : BNA_F
 ClientSampleId : TP-C2

Tgt Ion	Resp	Lower	Upper
244	100		
212	8.1	6.3	9.5
122	8.8	6.4	9.6



#86
 Perylene-d12
 Concen: 20.000 ng
 RT: 15.486 min Scan# 2278
 Delta R.T. -0.006 min
 Lab File: BF131910.D
 Acq: 04 Jan 2023 21:22

Tgt Ion	Resp	Lower	Upper
264	100		
260	24.2	18.6	28.0
265	21.5	17.4	26.0

