

Data Path : Z:\SVOASRV\HPCHEM1\BNA F\DATA\BF011819\
 Data File : BF112127.D
 Acq On : 18 Jan 2019 16:32
 Operator : JU/SJ
 Sample : K1156-10DL 2X
 Misc :
 ALS Vial : 3 Sample Multiplier: 1

Instrument :
 BNA_F
 ClientSampleID :
 COMP-7DL

Manual Integrations
 APPROVED

Sohil
 1/21/2019 12:00:49 PM

Quant Time: Jan 18 23:50:40 2019
 Quant Method : Z:\SVOASRV\HPCHEM1\BNA F\METHODS\8270-BF011619.M
 Quant Title : ASP BNA STANDARDS FOR 5 POINT CALIBRATION
 QLast Update : Fri Jan 18 23:33:58 2019
 Response via : Initial Calibration

Internal Standards	R.T.	QIon	Response	Conc	Units	Dev(Min)
1) 1,4-Dichlorobenzene-d4	6.86	152	285028	20.00	ng	0.00
21) Naphthalene-d8	8.14	136	1112644	20.00	ng	0.00
39) Acenaphthene-d10	9.89	164	530949	20.00	ng	0.00
64) Phenanthrene-d10	11.38	188	920414	20.00	ng	0.00
76) Chrysene-d12	14.02	240	670571	20.00	ng	0.00
87) Perylene-d12	15.50	264	720607	20.00	ng	0.00

System Monitoring Compounds

5) 2-Fluorophenol	5.49	112	713686	45.45	ng	0.00
7) Phenol-d6	6.50	99	917916	46.72	ng	0.00
23) Nitrobenzene-d5	7.41	82	550874	34.21	ng	-0.02
42) 2,4,6-Tribromophenol	10.68	330	250906	43.81	ng	-0.01
45) 2-Fluorobiphenyl	9.21	172	1049897	28.99	ng	0.00
79) Terphenyl-d14	12.96	244	883797	28.04	ng	0.00

Target Compounds

Target Compounds	R.T.	QIon	Response	Conc	Units	Qvalue
10) Phenol	6.51	94	51380	2.393	ng	# 75
31) Naphthalene	8.16	128	135097	2.670	ng	98
37) 2-Methylnaphthalene	8.85	142	77478	2.255	ng	97
38) 1-Methylnaphthalene	8.95	142	69661	2.109	ng	99
50) Dimethylphthalate	9.60	163	94331	2.436	ng	# 99
52) Acenaphthene	9.92	154	182087	5.868	ng	98
55) Dibenzofuran	10.10	168	211728	4.512	ng	98
58) Fluorene	10.44	166	242646	6.921	ng	99
71) Phenanthrene	11.41	178	2385256	51.495	ng	99
72) Anthracene	11.46	178	773443	16.483	ng	98
73) Carbazole	11.61	167	189331	4.028	ng	99
75) Fluoranthene	12.60	202	2239027	45.782	ng	99
78) Pyrene	12.83	202	1899976	42.946	ng	100
81) Benzo(a)anthracene	14.01	228	945605	24.594	ng	99
83) Chrysene	14.05	228	771886	21.217	ng	97
86) Indeno(1,2,3-cd)pyrene	16.97	276	362685	10.806	ng	95
88) Benzo(b)fluoranthene	15.07	252	973234m	23.793	ng	
89) Benzo(k)fluoranthene	15.09	252	255375m	6.450	ng	
90) Benzo(a)pyrene	15.43	252	691696	18.439	ng	98
91) Dibenzo(a,h)anthracene	16.98	278	100561m	3.018	ng	
92) Benzo(g,h,i)perylene	17.42	276	313748	9.559	ng	98

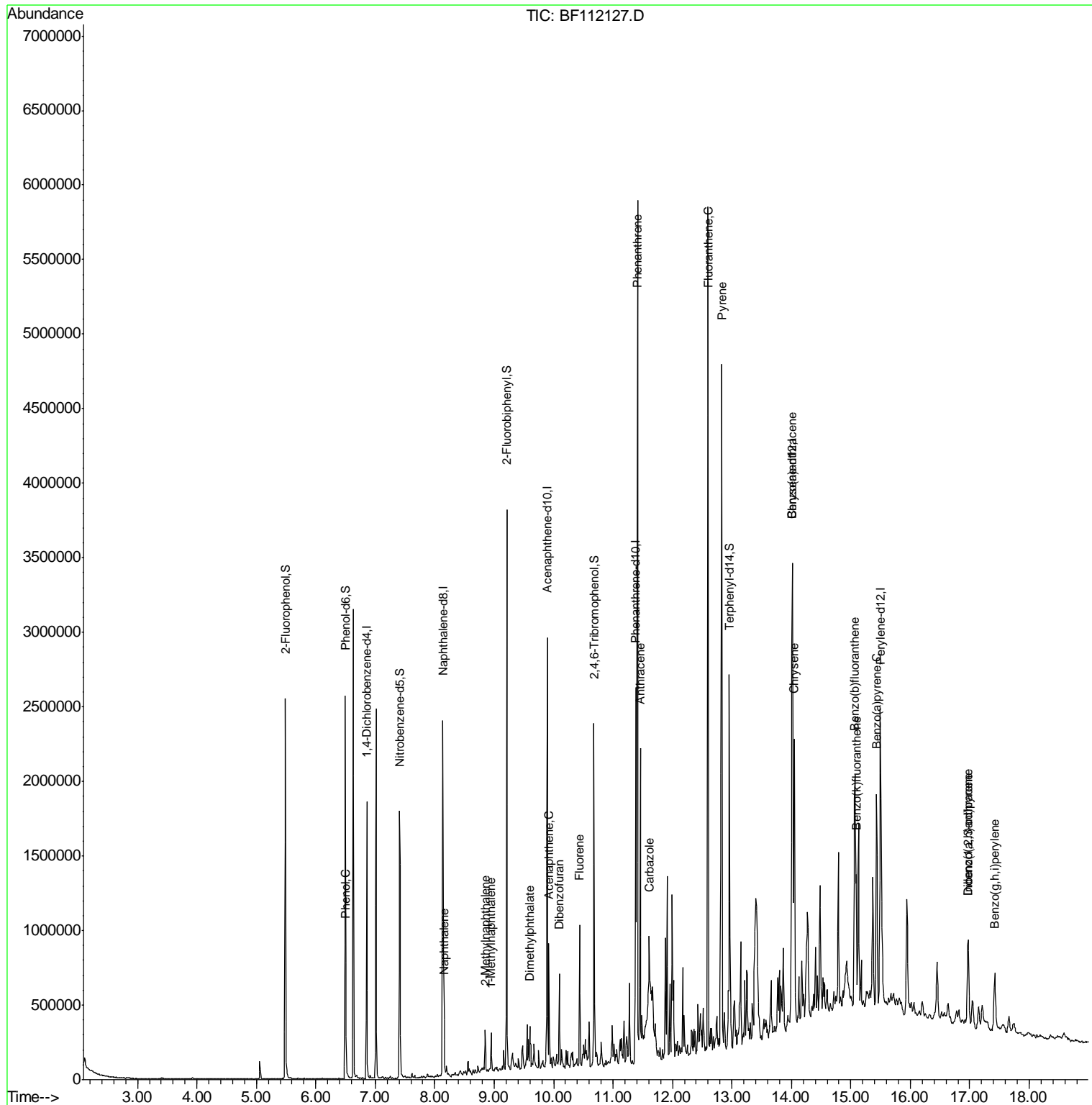
(#) = qualifier out of range (m) = manual integration (+) = signals summed

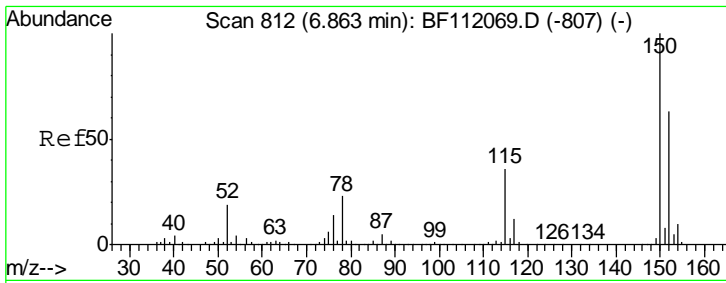
Data Path : Z:\SVOASRV\HPCHEM1\BNA F\DATA\BF011819\
 Data File : BF112127.D
 Acq On : 18 Jan 2019 16:32
 Operator : JU/SJ
 Sample : K1156-10DL 2X
 Misc :
 ALS Vial : 3 Sample Multiplier: 1

Instrument :
 BNA_F
 Client Sampled :
 COMP-7DL

Manual Integrations
APPROVED
 Sohil
 1/21/2019 12:00:49 PM

Quant Time: Jan 18 23:50:40 2019
 Quant Method : Z:\SVOASRV\HPCHEM1\BNA F\METHODS\8270-BF011619.M
 Quant Title : ASP BNA STANDARDS FOR 5 POINT CALIBRATION
 QLast Update : Fri Jan 18 23:33:58 2019
 Response via : Initial Calibration





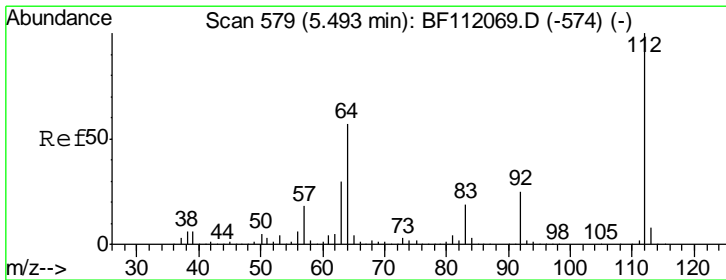
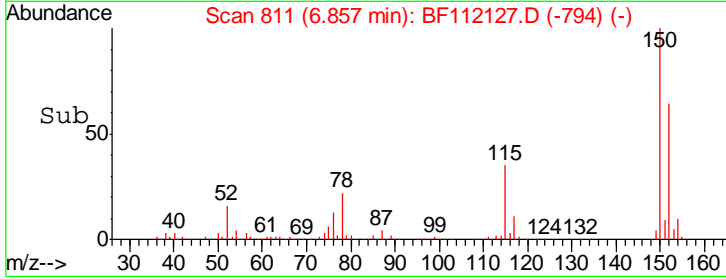
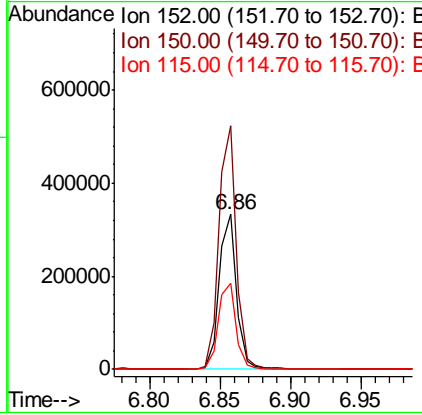
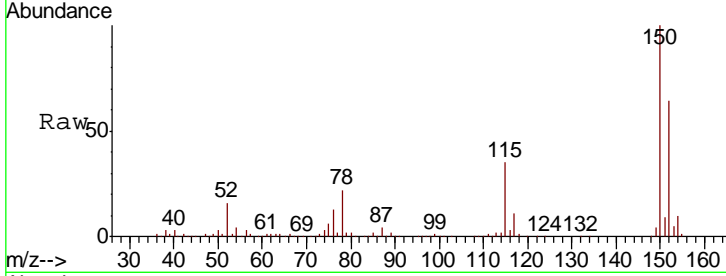
#1
 1,4-Dichlorobenzene-d4
 Concen: 20.000 ng
 RT: 6.86 min Scan# 811
 Delta R.T. 0.00 min
 Lab File: BF112127.D
 Acq: 18 Jan 2019 16:32

Instrument :
 BNA_F
ClientSampled :
 COMP-7DL

Tgt Ion	Resp	Lower	Upper
152	285028		
150	156.9	127.4	191.0
115	55.6	45.5	68.3

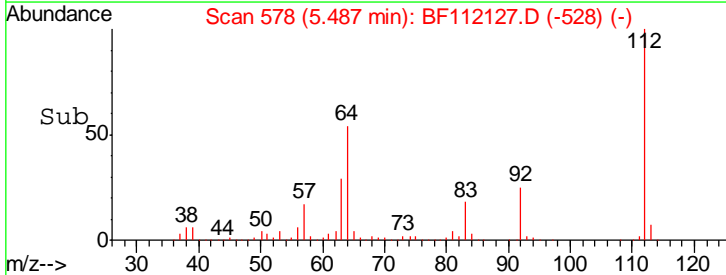
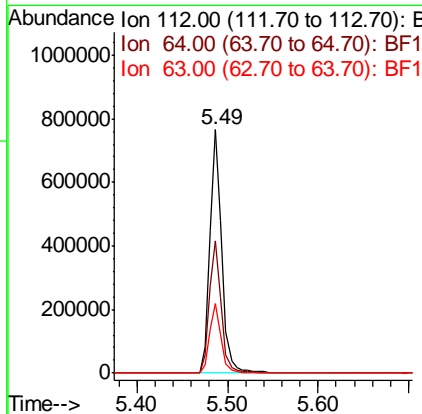
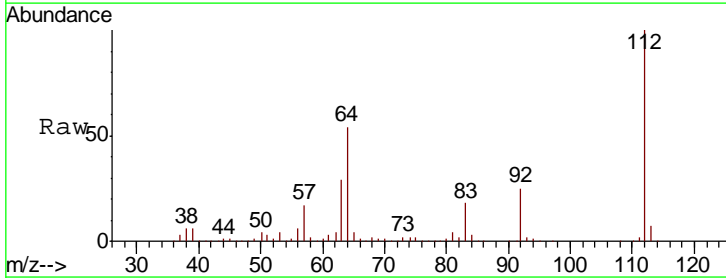
Manual Integrations
APPROVED

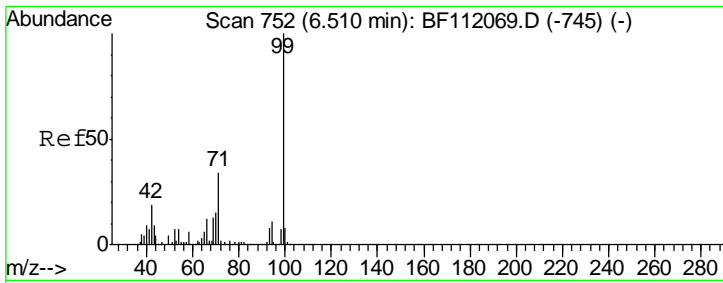
Sohil
 1/21/2019 12:00:49 PM



#5
 2-Fluorophenol
 Concen: 45.447 ng
 RT: 5.49 min Scan# 578
 Delta R.T. -0.01 min
 Lab File: BF112127.D
 Acq: 18 Jan 2019 16:32

Tgt Ion	Resp	Lower	Upper
112	713686		
64	54.4	45.7	68.5
63	28.8	23.6	35.4





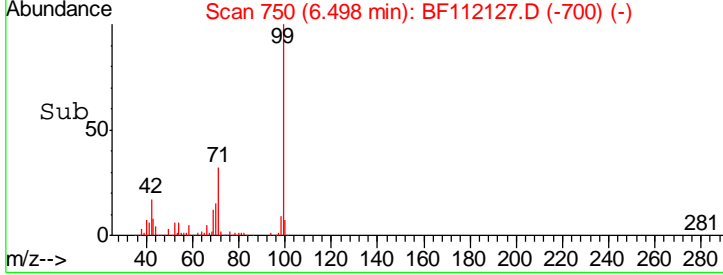
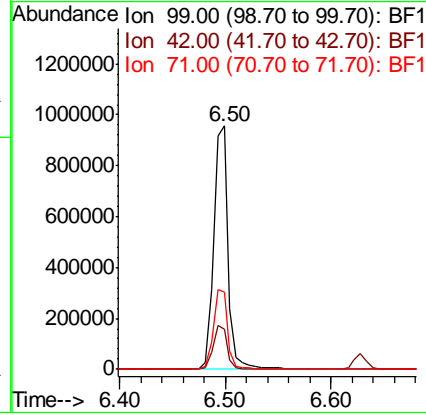
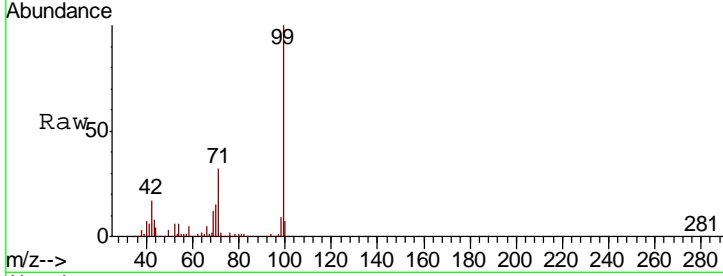
#7
 Phenol-d6
 Concen: 46.719 ng
 RT: 6.50 min Scan# 750
 Delta R.T. -0.01 min
 Lab File: BF112127.D
 Acq: 18 Jan 2019 16:32

Instrument :
 BNA_F
ClientSampled :
 COMP-7DL

Tgt Ion	Resp	Lower	Upper
99	917916		
42	16.7	15.1	22.7
71	31.7	26.9	40.3

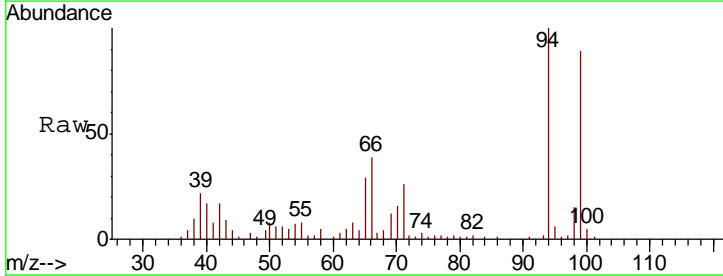
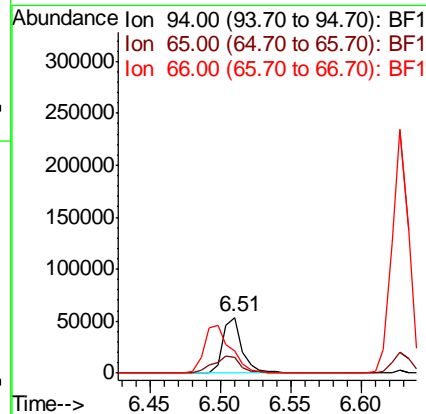
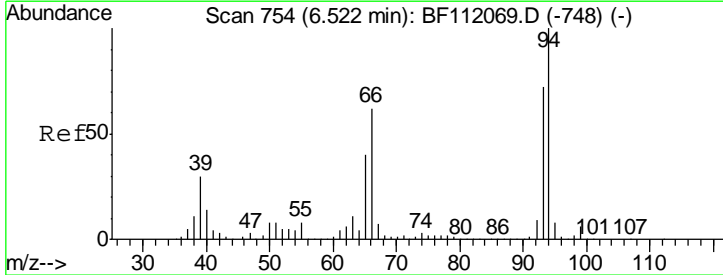
Manual Integrations
APPROVED

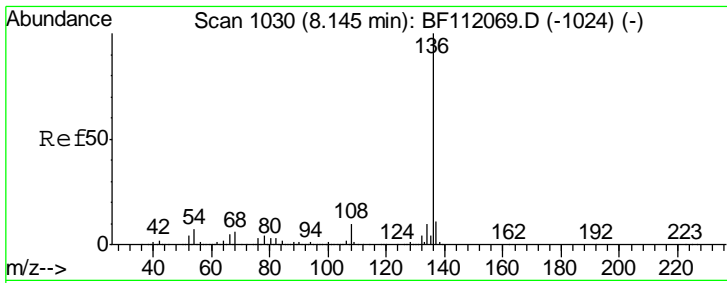
Sohil
 1/21/2019 12:00:49 PM



#10
 Phenol
 Concen: 2.393 ng
 RT: 6.51 min Scan# 752
 Delta R.T. -0.01 min
 Lab File: BF112127.D
 Acq: 18 Jan 2019 16:32

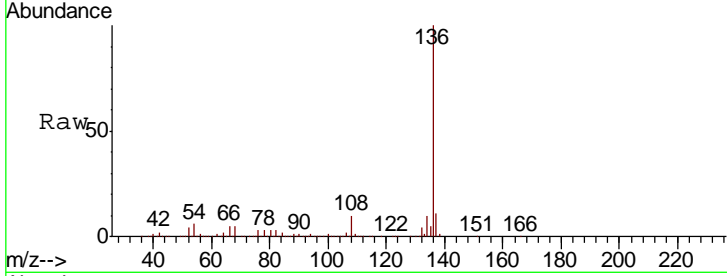
Tgt Ion	Resp	Lower	Upper
94	51380		
65	28.8	20.3	60.3
66	39.3	42.4	82.4#





#21
 Naphthalene-d8
 Concen: 20.000 ng
 RT: 8.14 min Scan# 1029
 Delta R.T. 0.00 min
 Lab File: BF112127.D
 Acq: 18 Jan 2019 16:32

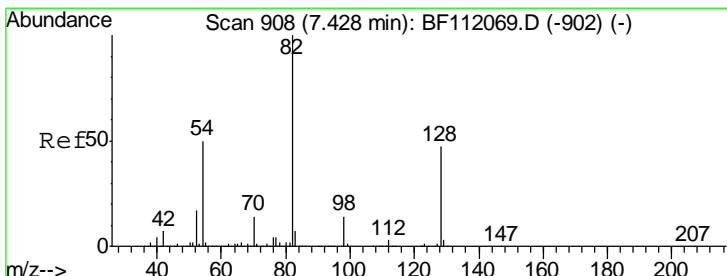
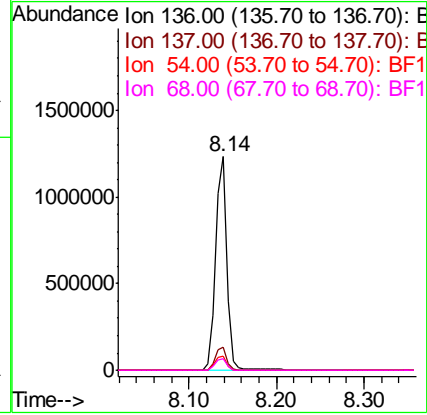
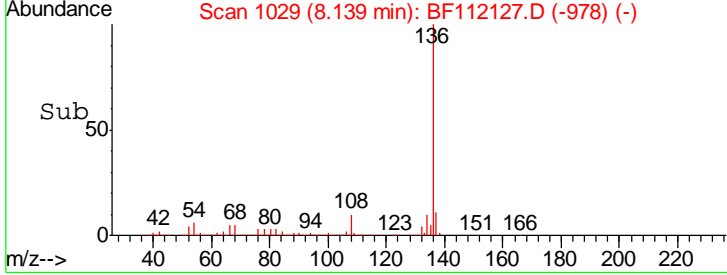
Instrument :
 BNA_F
ClientSampled :
 COMP-7DL



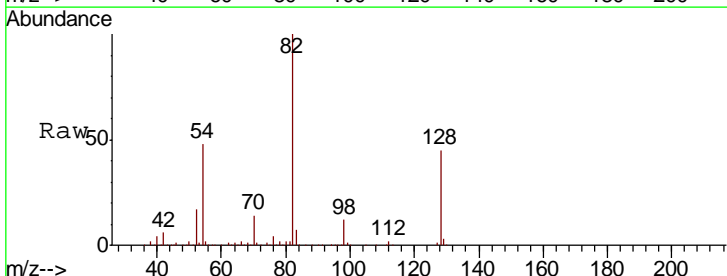
Tgt Ion: 136 Resp: 1112644

Ion	Ratio	Lower	Upper
136	100		
137	10.8	9.1	13.7
54	6.4	5.9	8.9
68	5.3	5.1	7.7

Manual Integrations
APPROVED
 Sohil
 1/21/2019 12:00:49 PM

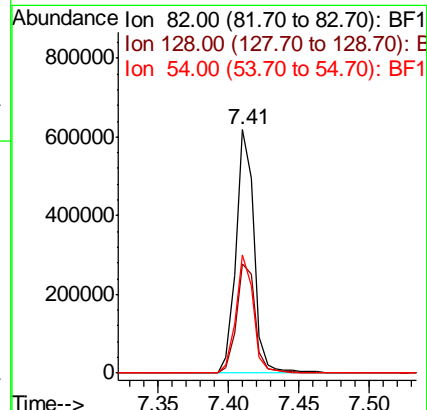
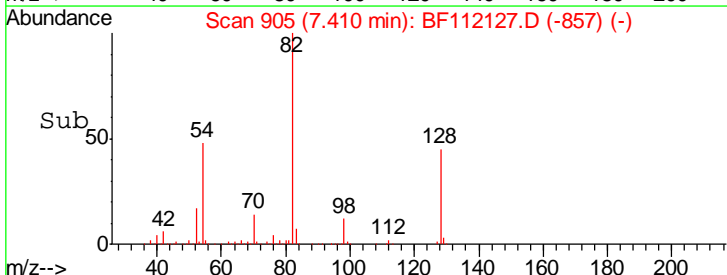


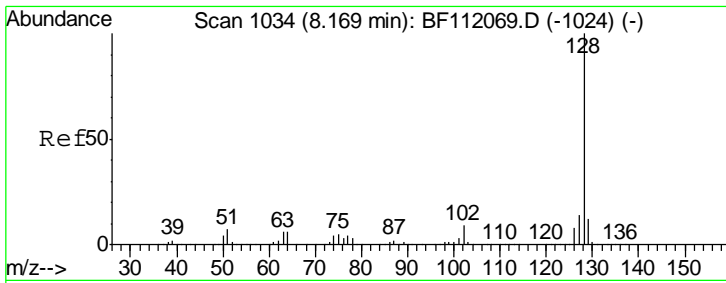
#23
 Nitrobenzene-d5
 Concen: 34.206 ng
 RT: 7.41 min Scan# 905
 Delta R.T. -0.02 min
 Lab File: BF112127.D
 Acq: 18 Jan 2019 16:32



Tgt Ion: 82 Resp: 550874

Ion	Ratio	Lower	Upper
82	100		
128	44.8	37.8	56.8
54	48.3	39.7	59.5





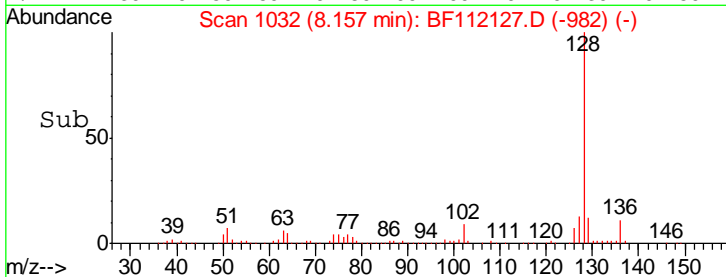
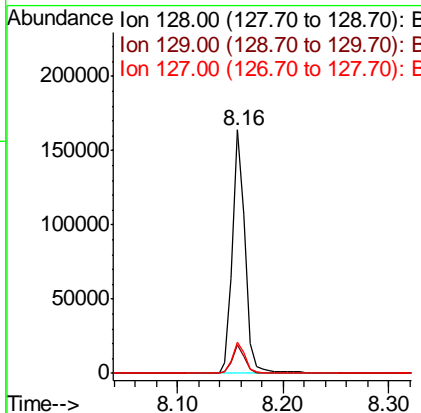
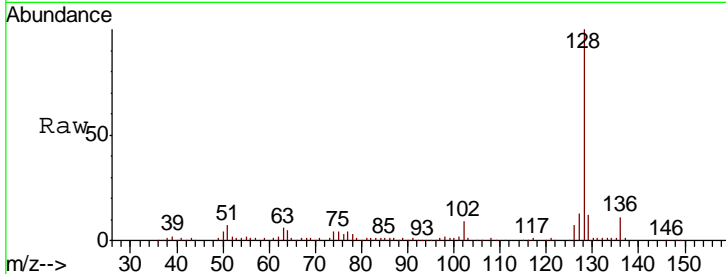
#31
 Naphthalene
 Concen: 2.670 ng
 RT: 8.16 min Scan# 1032
 Delta R.T. -0.01 min
 Lab File: BF112127.D
 Acq: 18 Jan 2019 16:32

Instrument :
 BNA_F
Client Sampled :
 COMP-7DL

Tgt Ion	Resp	Lower	Upper
128	135097		
129	11.5	9.6	14.4
127	12.9	11.1	16.7

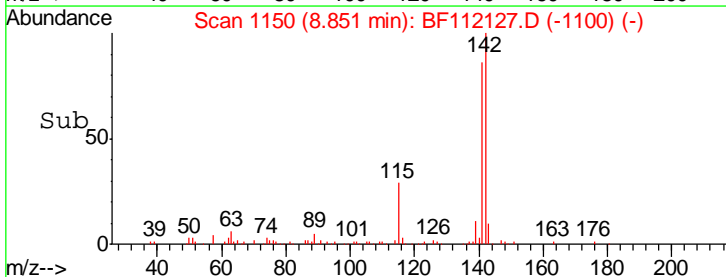
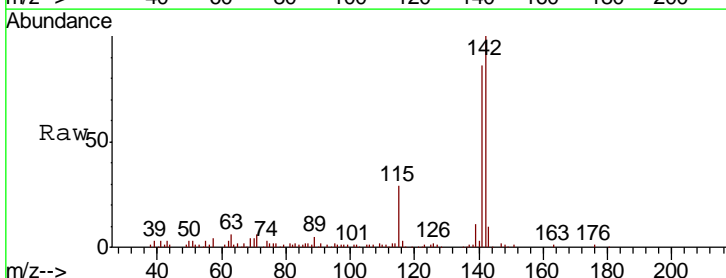
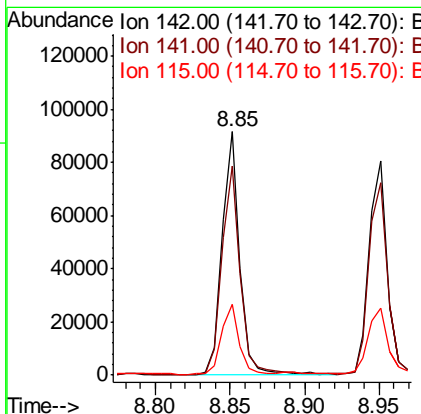
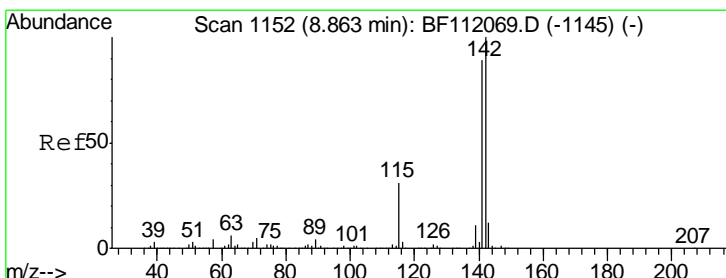
Manual Integrations
APPROVED

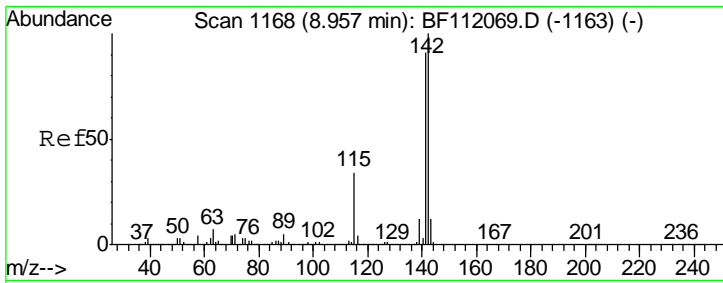
Sohil
 1/21/2019 12:00:49 PM



#37
 2-Methylnaphthalene
 Concen: 2.255 ng
 RT: 8.85 min Scan# 1150
 Delta R.T. -0.01 min
 Lab File: BF112127.D
 Acq: 18 Jan 2019 16:32

Tgt Ion	Resp	Lower	Upper
142	77478		
141	86.0	70.9	106.3
115	29.2	24.9	37.3





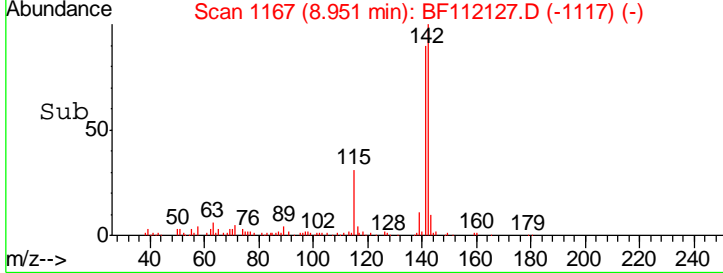
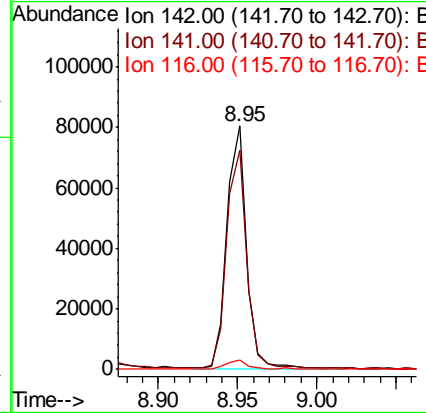
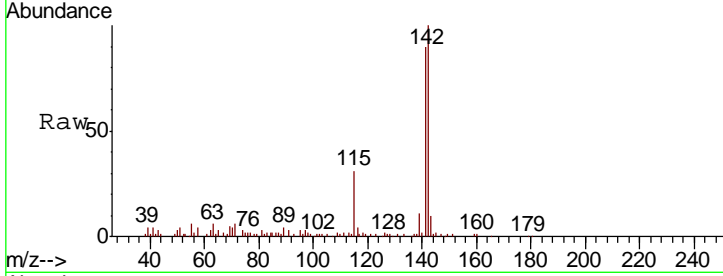
#38
 1-Methylnaphthalene
 Concen: 2.109 ng
 RT: 8.95 min Scan# 1167
 Delta R.T. -0.01 min
 Lab File: BF112127.D
 Acq: 18 Jan 2019 16:32

Instrument :
 BNA_F
ClientSampled :
 COMP-7DL

Tgt Ion	Resp	Lower	Upper
142	100		
141	89.9	72.6	108.8
116	3.8	2.8	4.2

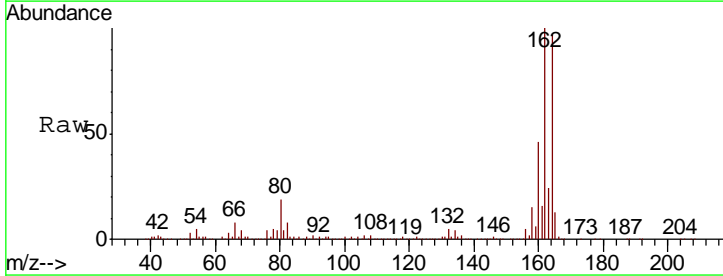
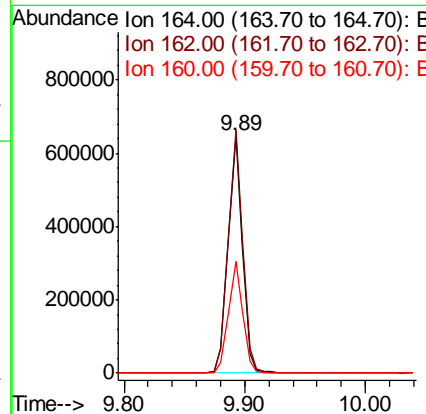
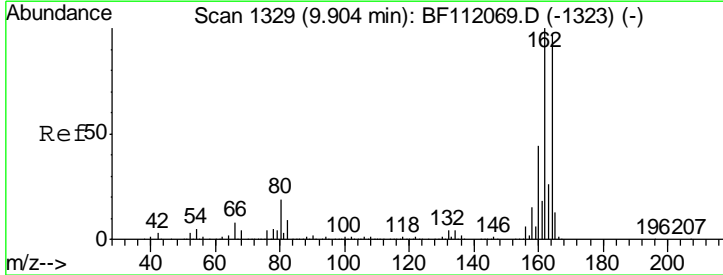
Manual Integrations
APPROVED

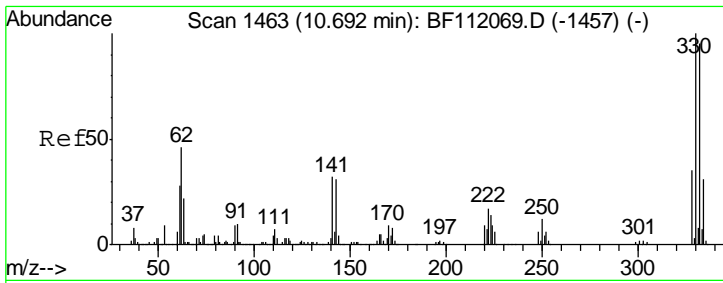
Sohil
 1/21/2019 12:00:49 PM



#39
 Acenaphthene-d10
 Concen: 20.000 ng
 RT: 9.89 min Scan# 1327
 Delta R.T. -0.01 min
 Lab File: BF112127.D
 Acq: 18 Jan 2019 16:32

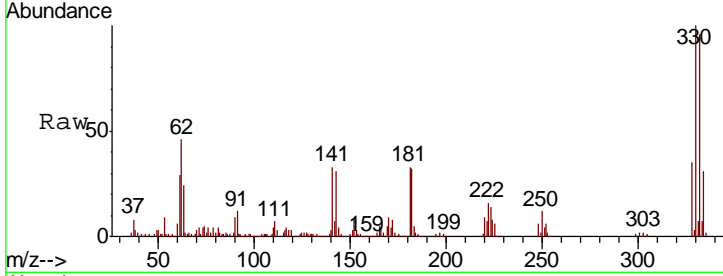
Tgt Ion	Resp	Lower	Upper
164	100		
162	102.6	82.2	123.4
160	46.9	36.2	54.4





#42
 2,4,6-Tribromophenol
 Concen: 43.805 ng
 RT: 10.68 min Scan# 1461
 Delta R.T. -0.01 min
 Lab File: BF112127.D
 Acq: 18 Jan 2019 16:32

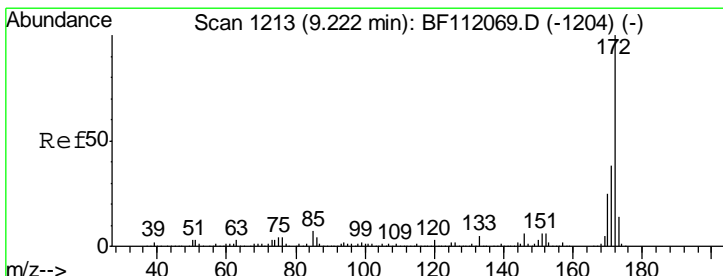
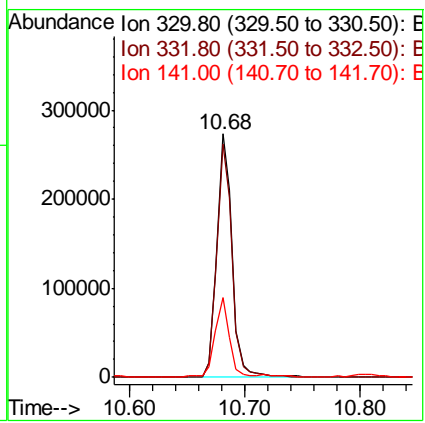
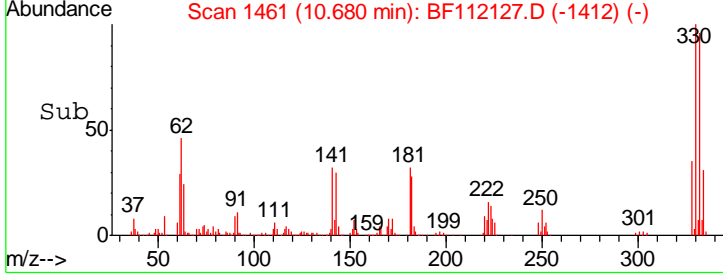
Instrument :
 BNA_F
ClientSampled :
 COMP-7DL



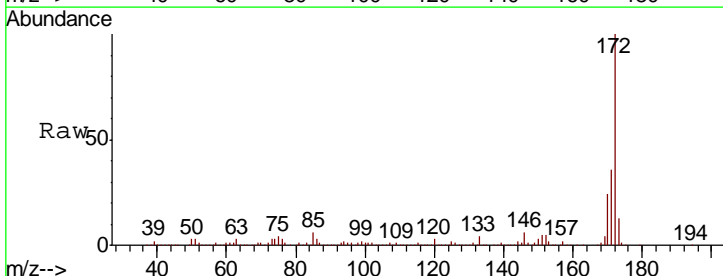
Tgt Ion: 330 Resp: 250906

Ion	Ratio	Lower	Upper
330	100		
332	96.1	76.6	114.8
141	31.7	24.3	36.5

Manual Integrations
APPROVED
 Sohil
 1/21/2019 12:00:49 PM

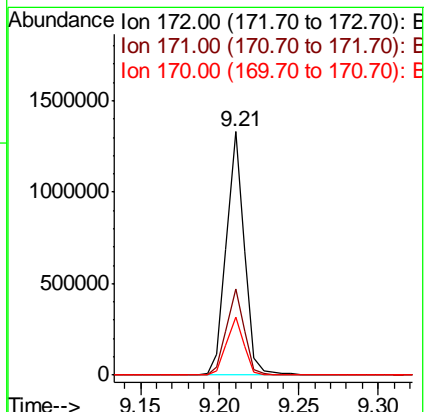
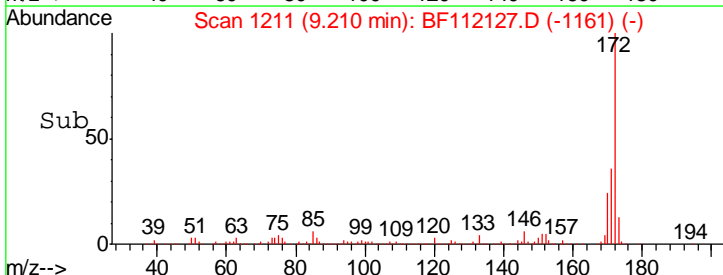


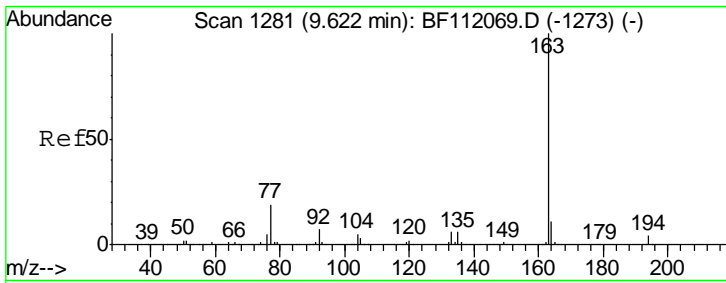
#45
 2-Fluorobiphenyl
 Concen: 28.991 ng
 RT: 9.21 min Scan# 1211
 Delta R.T. -0.01 min
 Lab File: BF112127.D
 Acq: 18 Jan 2019 16:32



Tgt Ion: 172 Resp: 1049897

Ion	Ratio	Lower	Upper
172	100		
171	35.6	30.5	45.7
170	23.9	20.2	30.4





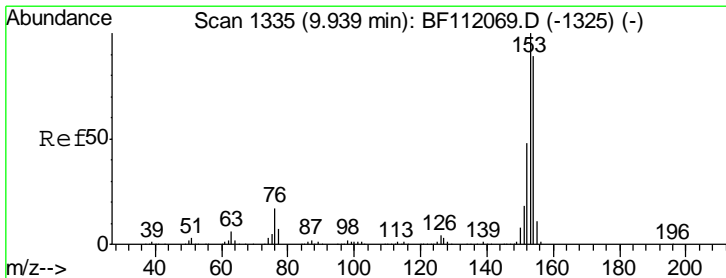
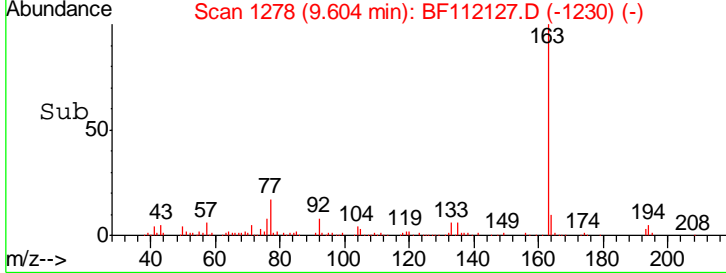
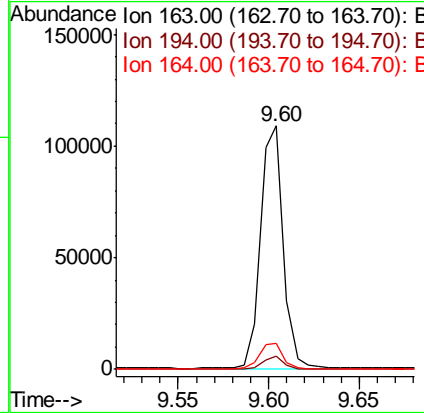
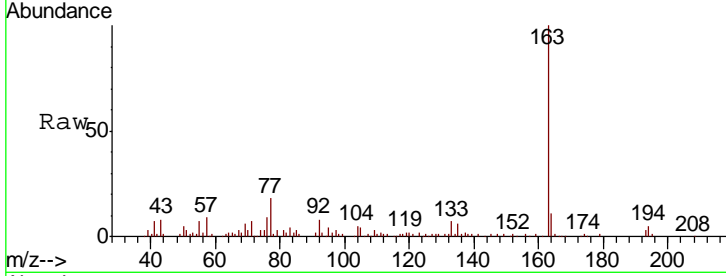
#50
 Dimethylphthalate
 Concen: 2.436 ng
 RT: 9.60 min Scan# 1278
 Delta R.T. -0.02 min
 Lab File: BF112127.D
 Acq: 18 Jan 2019 16:32

Instrument :
 BNA_F
ClientSampled :
 COMP-7DL

Tgt Ion	Resp	Lower	Upper
163	94331		
194	5.5	3.3	4.9#
164	10.6	8.5	12.7

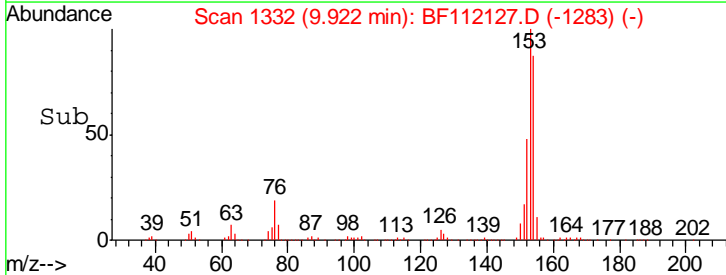
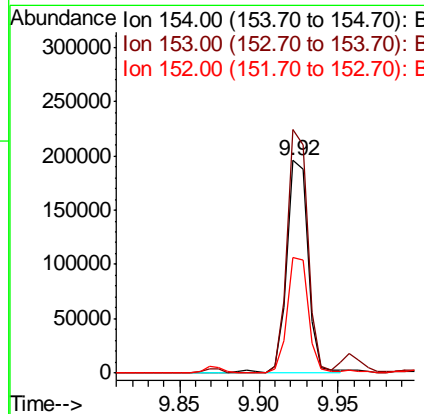
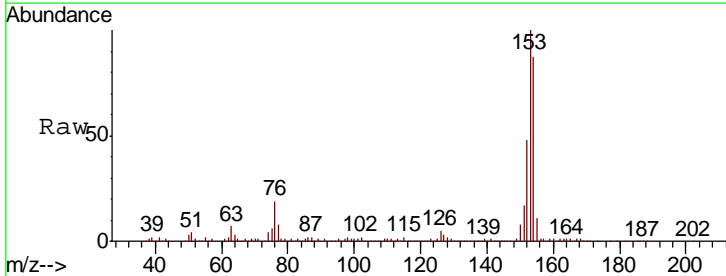
Manual Integrations
APPROVED

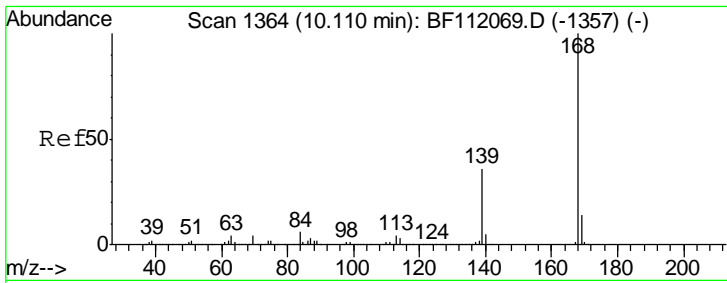
Sohil
 1/21/2019 12:00:49 PM



#52
 Acenaphthene
 Concen: 5.868 ng
 RT: 9.92 min Scan# 1332
 Delta R.T. -0.01 min
 Lab File: BF112127.D
 Acq: 18 Jan 2019 16:32

Tgt Ion	Resp	Lower	Upper
154	182087		
153	114.6	89.8	134.6
152	54.5	43.5	65.3





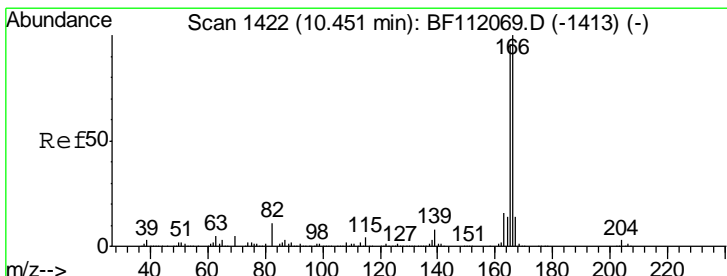
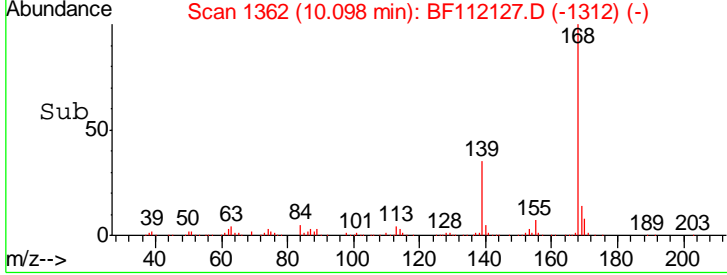
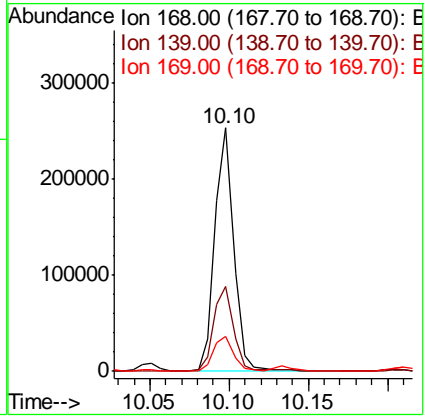
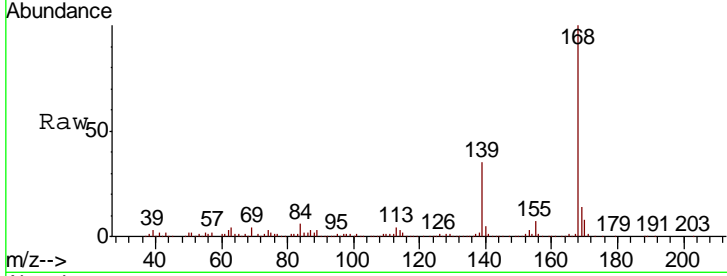
#55
 Dibenzofuran
 Concen: 4.512 ng
 RT: 10.10 min Scan# 1362
 Delta R.T. -0.01 min
 Lab File: BF112127.D
 Acq: 18 Jan 2019 16:32

Instrument :
 BNA_F
ClientSampled :
 COMP-7DL

Tgt Ion	Resp	Lower	Upper
168	100		
139	35.0	29.2	43.8
169	14.4	11.4	17.0

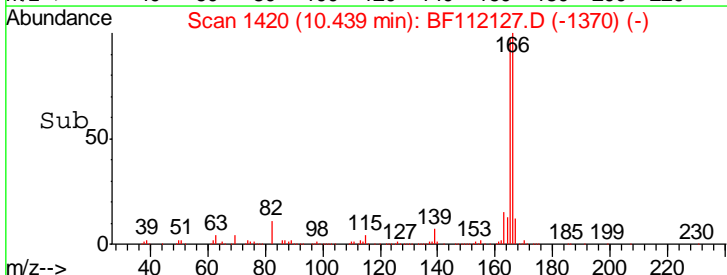
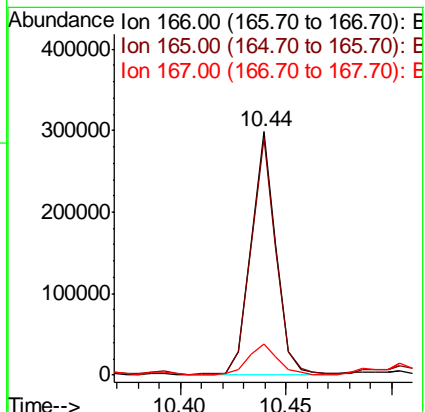
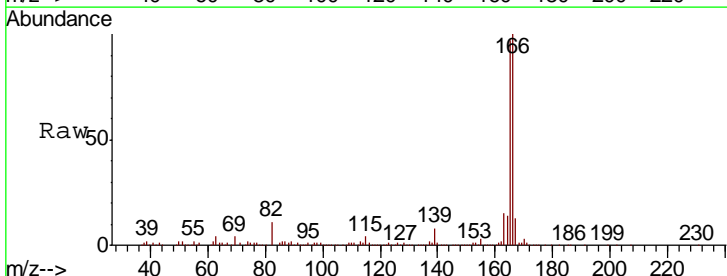
Manual Integrations
APPROVED

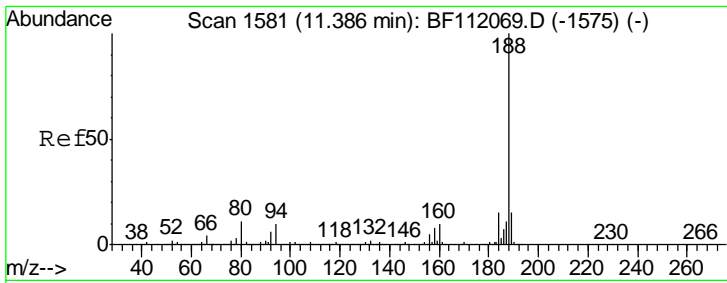
Sohil
 1/21/2019 12:00:49 PM



#58
 Fluorene
 Concen: 6.921 ng
 RT: 10.44 min Scan# 1420
 Delta R.T. -0.01 min
 Lab File: BF112127.D
 Acq: 18 Jan 2019 16:32

Tgt Ion	Resp	Lower	Upper
166	100		
165	97.5	77.1	115.7
167	12.8	11.3	16.9





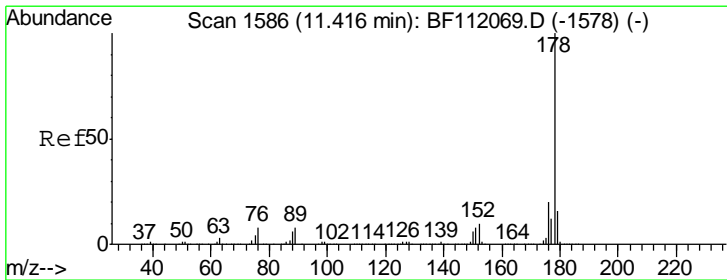
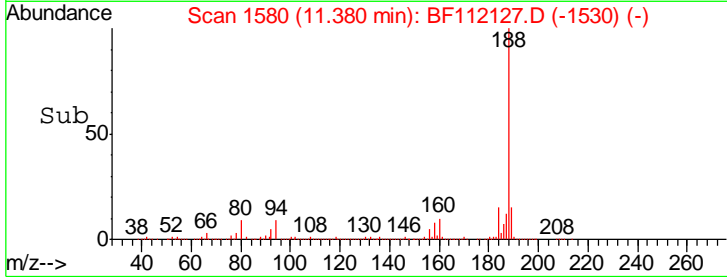
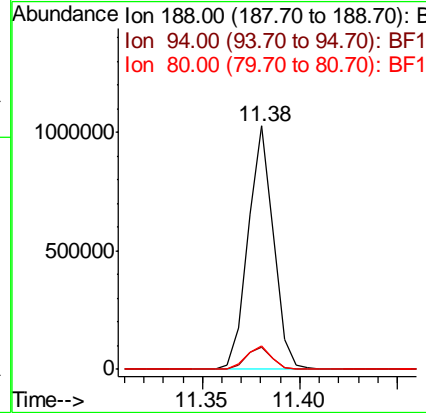
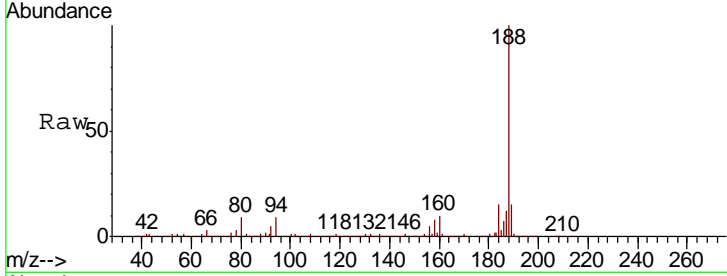
#64
 Phenanthrene-d10
 Concen: 20.000 ng
 RT: 11.38 min Scan# 1580
 Delta R.T. -0.01 min
 Lab File: BF112127.D
 Acq: 18 Jan 2019 16:32

Instrument :
 BNA_F
ClientSampled :
 COMP-7DL

Tgt Ion	Ratio	Lower	Upper
188	100		
94	8.8	8.2	12.2
80	9.5	8.9	13.3

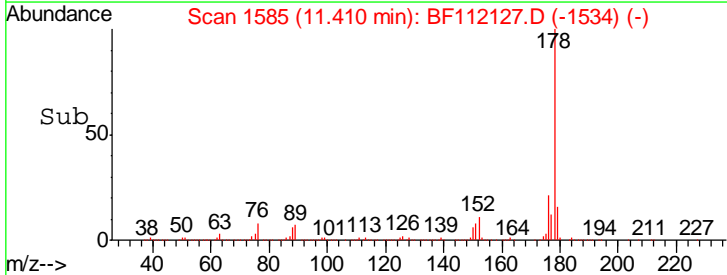
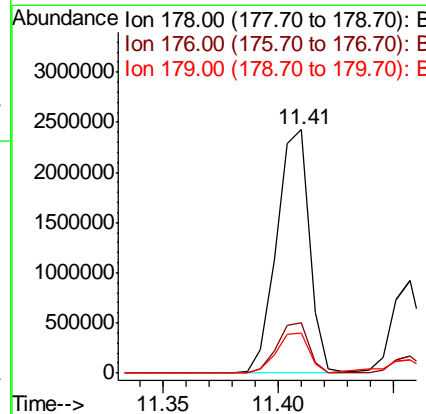
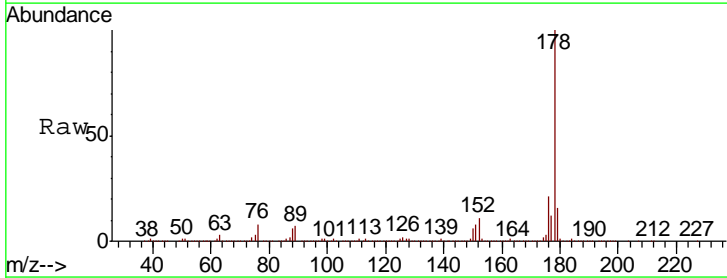
Manual Integrations
APPROVED

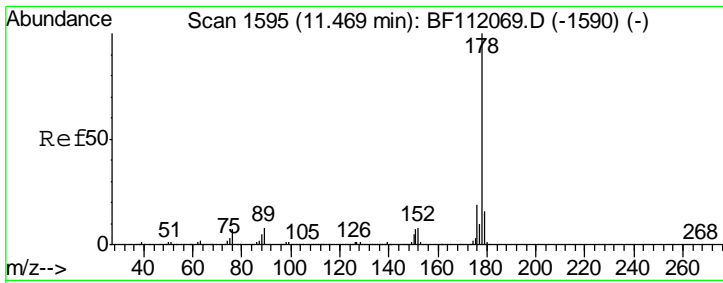
Sohil
 1/21/2019 12:00:49 PM



#71
 Phenanthrene
 Concen: 51.495 ng
 RT: 11.41 min Scan# 1585
 Delta R.T. 0.00 min
 Lab File: BF112127.D
 Acq: 18 Jan 2019 16:32

Tgt Ion	Ratio	Lower	Upper
178	100		
176	20.8	16.3	24.5
179	16.5	13.0	19.4





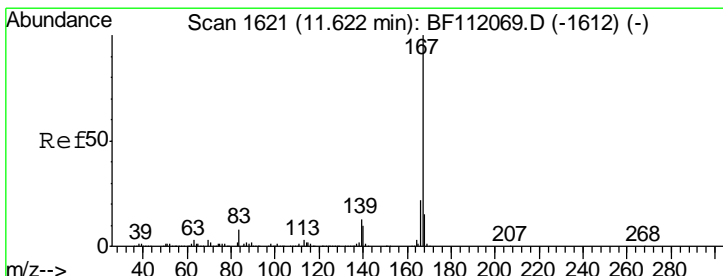
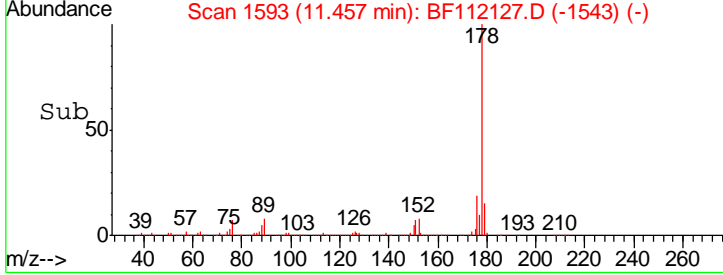
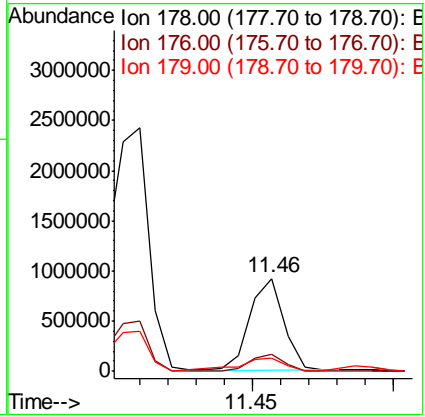
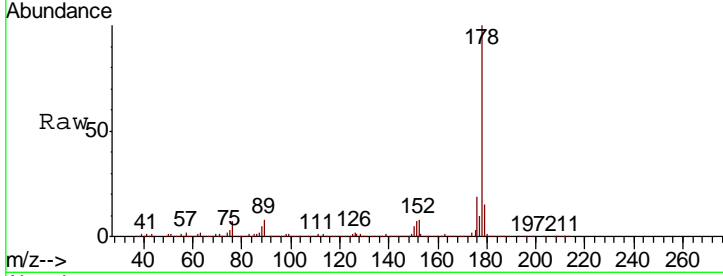
#72
 Anthracene
 Concen: 16.483 ng
 RT: 11.46 min Scan# 1593
 Delta R.T. -0.01 min
 Lab File: BF112127.D
 Acq: 18 Jan 2019 16:32

Instrument :
 BNA_F
ClientSampled :
 COMP-7DL

Tgt Ion	Resp	Lower	Upper
178	100		
176	18.7	15.5	23.3
179	15.0	12.8	19.2

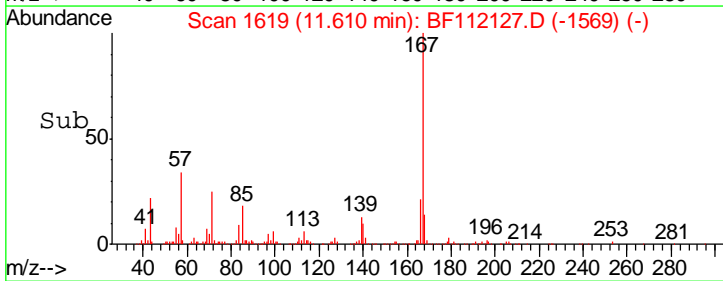
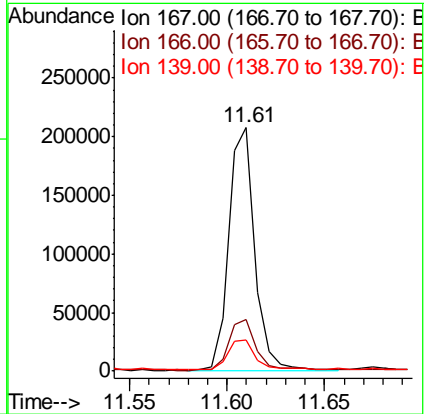
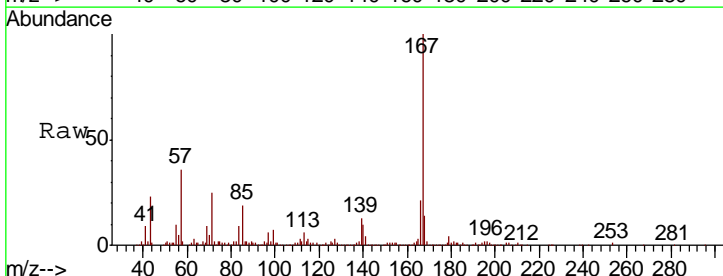
Manual Integrations
APPROVED

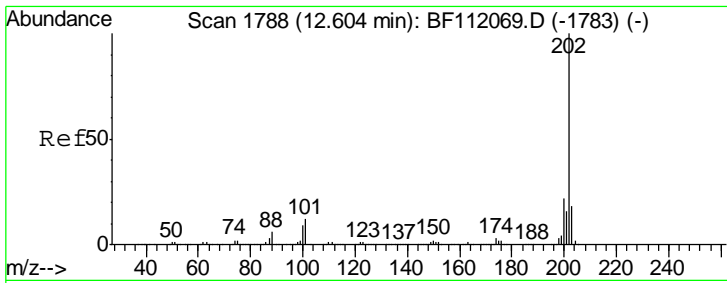
Sohil
 1/21/2019 12:00:49 PM



#73
 Carbazole
 Concen: 4.028 ng
 RT: 11.61 min Scan# 1619
 Delta R.T. -0.01 min
 Lab File: BF112127.D
 Acq: 18 Jan 2019 16:32

Tgt Ion	Resp	Lower	Upper
167	100		
166	21.5	17.9	26.9
139	12.9	10.2	15.2





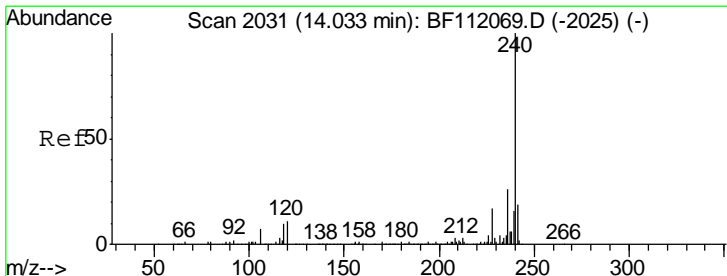
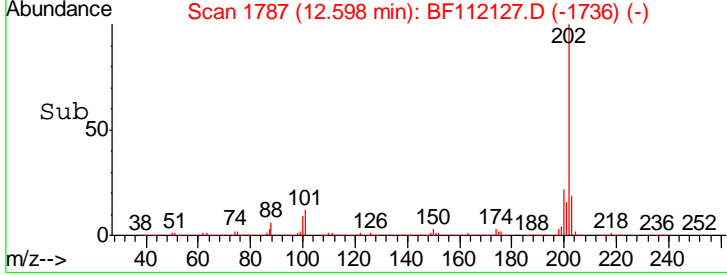
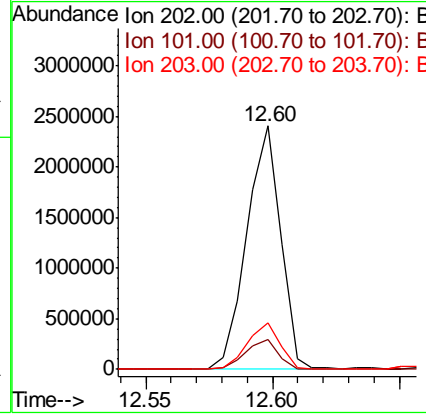
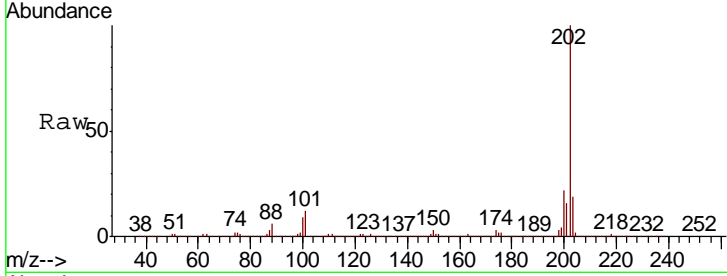
#75
 Fluoranthene
 Concen: 45.782 ng
 RT: 12.60 min Scan# 1787
 Delta R.T. 0.00 min
 Lab File: BF112127.D
 Acq: 18 Jan 2019 16:32

Instrument :
 BNA_F
ClientSampled :
 COMP-7DL

Tgt Ion: 202 Resp: 2239027

Ion	Ratio	Lower	Upper
202	100		
101	12.1	0.0	31.8
203	19.0	0.0	38.4

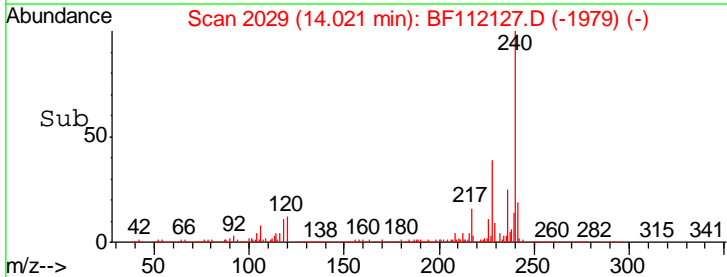
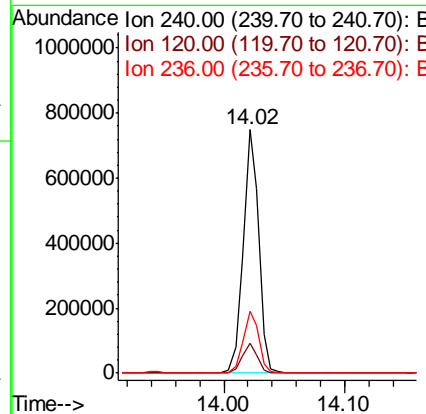
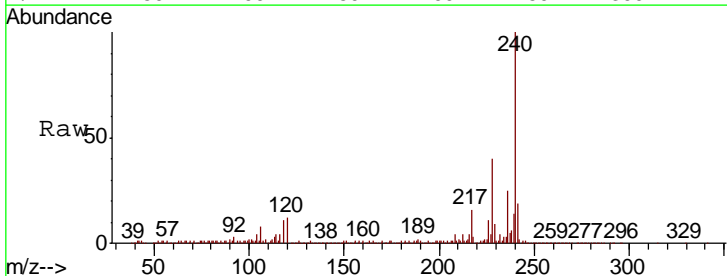
Manual Integrations
APPROVED
 Sohil
 1/21/2019 12:00:49 PM

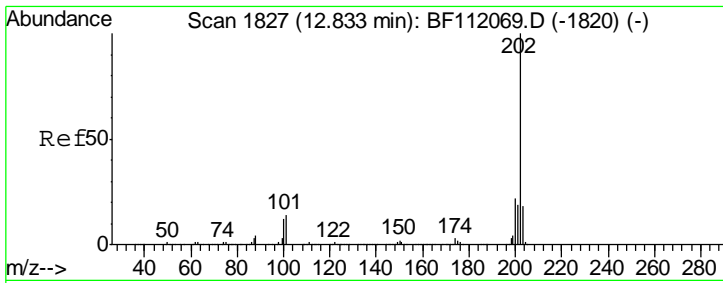


#76
 Chrysene-d12
 Concen: 20.000 ng
 RT: 14.02 min Scan# 2029
 Delta R.T. -0.01 min
 Lab File: BF112127.D
 Acq: 18 Jan 2019 16:32

Tgt Ion: 240 Resp: 670571

Ion	Ratio	Lower	Upper
240	100		
120	12.1	9.0	13.6
236	25.3	20.7	31.1





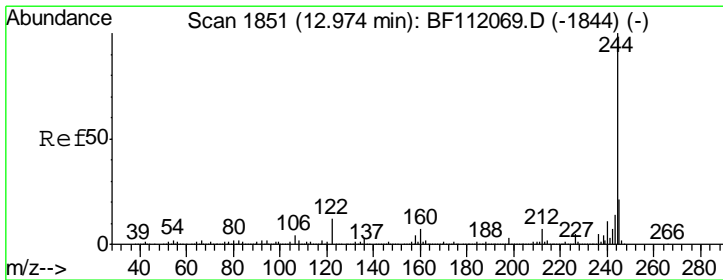
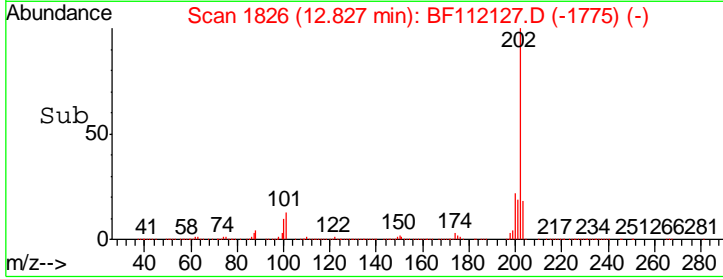
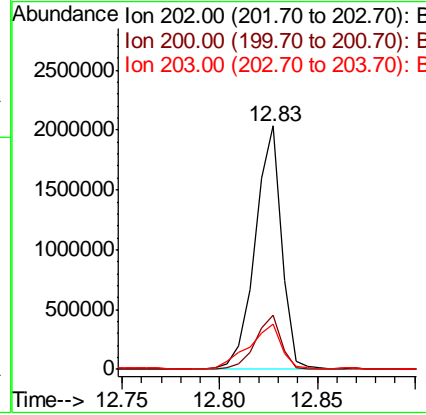
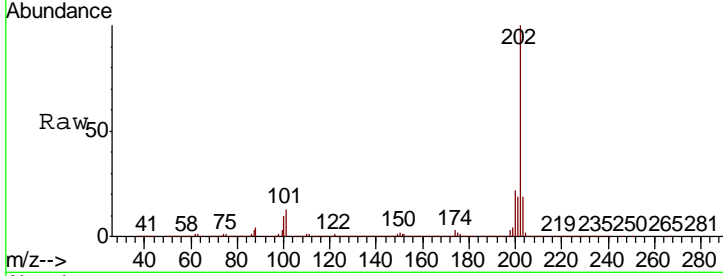
#78
 Pyrene
 Concen: 42.946 ng
 RT: 12.83 min Scan# 1826
 Delta R.T. 0.00 min
 Lab File: BF112127.D
 Acq: 18 Jan 2019 16:32

Instrument :
 BNA_F
Client Sampled :
 COMP-7DL

Tgt Ion	Resp	Lower	Upper
202	100		
200	22.1	17.7	26.5
203	18.5	14.6	22.0

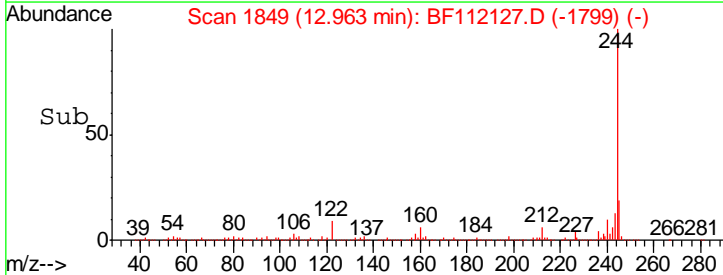
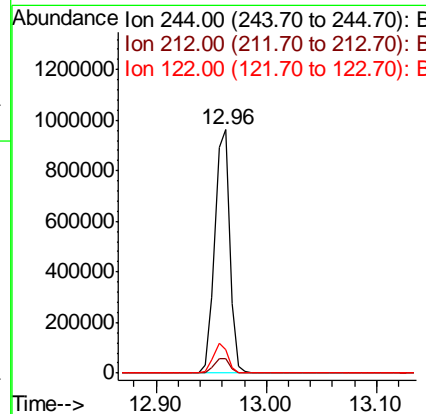
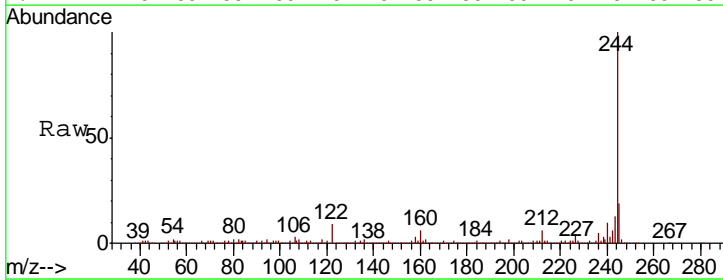
Manual Integrations
APPROVED

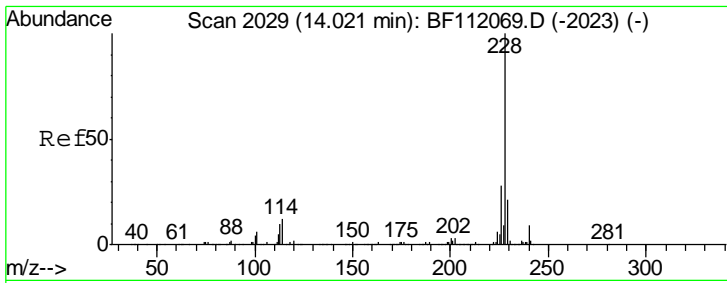
Sohil
 1/21/2019 12:00:49 PM



#79
 Terphenyl-d14
 Concen: 28.038 ng
 RT: 12.96 min Scan# 1849
 Delta R.T. -0.01 min
 Lab File: BF112127.D
 Acq: 18 Jan 2019 16:32

Tgt Ion	Resp	Lower	Upper
244	100		
212	6.2	5.9	8.9
122	9.4	9.8	14.6#





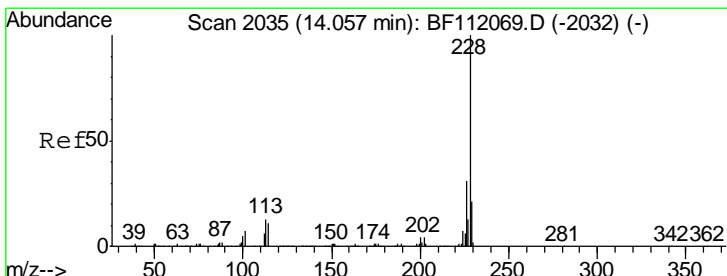
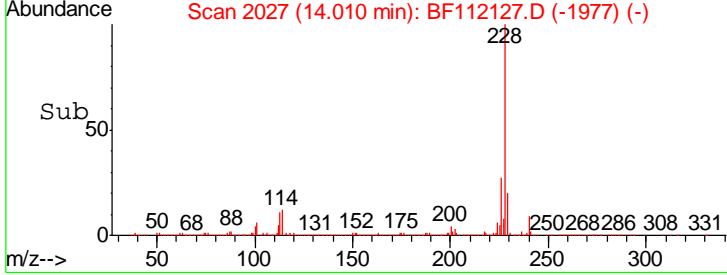
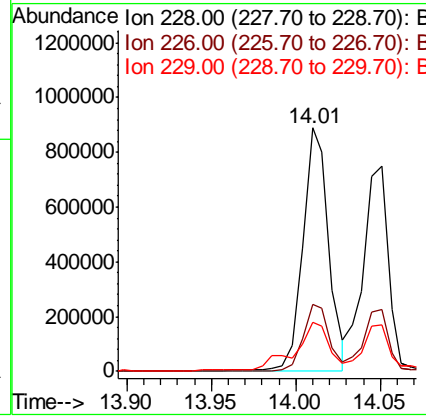
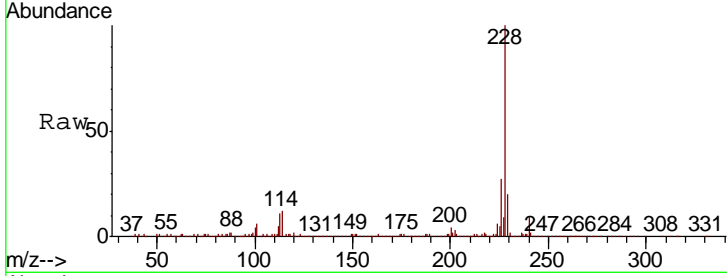
#81
 Benzo(a)anthracene
 Concen: 24.594 ng
 RT: 14.01 min Scan# 2027
 Delta R.T. -0.01 min
 Lab File: BF112127.D
 Acq: 18 Jan 2019 16:32

Instrument :
 BNA_F
 ClientSampleID :
 COMP-7DL

Tgt Ion	Ratio	Lower	Upper
228	100		
226	27.3	22.6	34.0
229	20.2	16.5	24.7

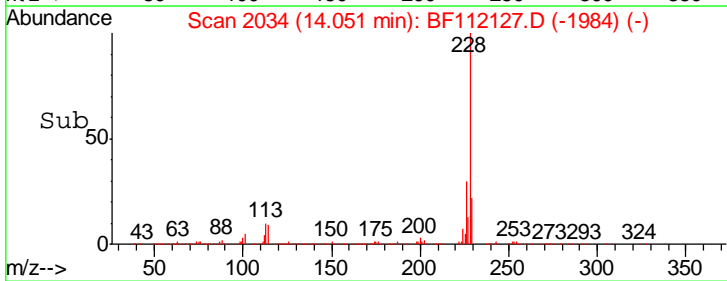
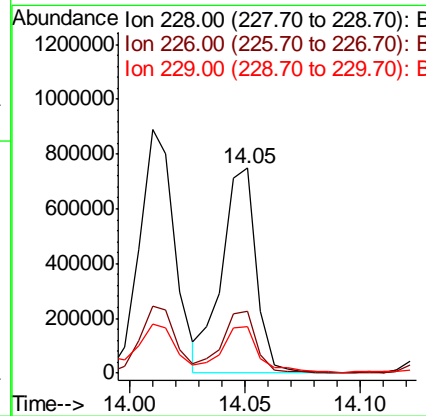
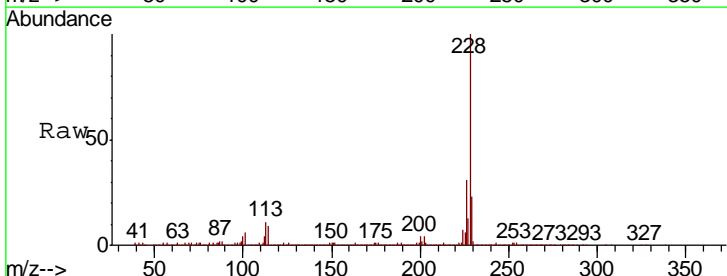
Manual Integrations
 APPROVED

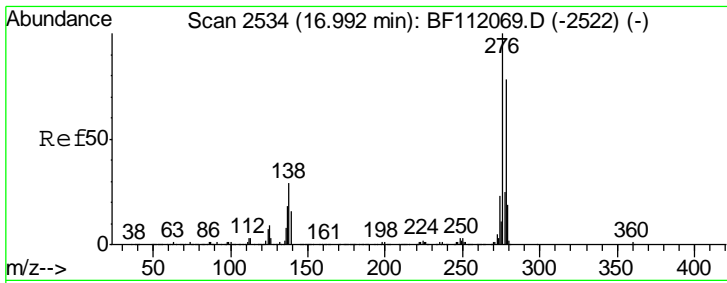
Sohil
 1/21/2019 12:00:49 PM



#83
 Chrysene
 Concen: 21.217 ng
 RT: 14.05 min Scan# 2034
 Delta R.T. -0.01 min
 Lab File: BF112127.D
 Acq: 18 Jan 2019 16:32

Tgt Ion	Ratio	Lower	Upper
228	100		
226	30.5	25.0	37.6
229	22.7	16.6	24.8



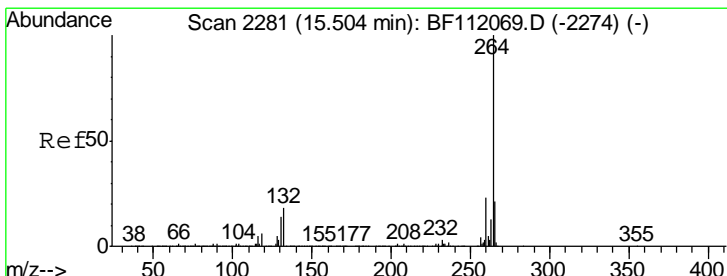
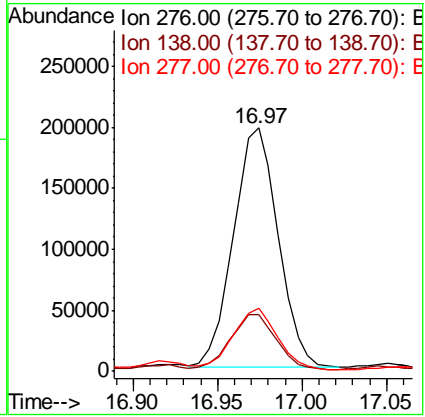
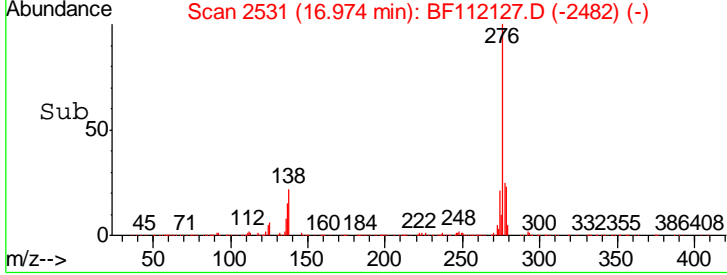
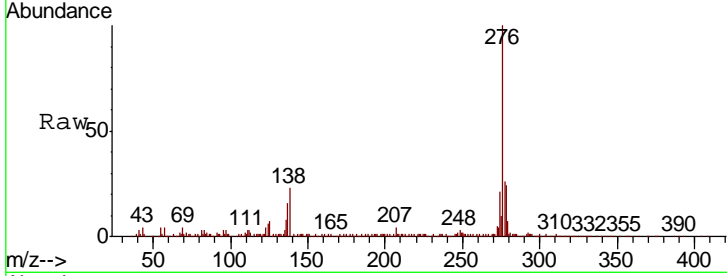


#86
 Indeno(1,2,3-cd)pyrene
 Concen: 10.806 ng
 RT: 16.97 min Scan# 2531
 Delta R.T. -0.01 min
 Lab File: BF112127.D
 Acq: 18 Jan 2019 16:32

Instrument :
 BNA_F
ClientSampled :
 COMP-7DL

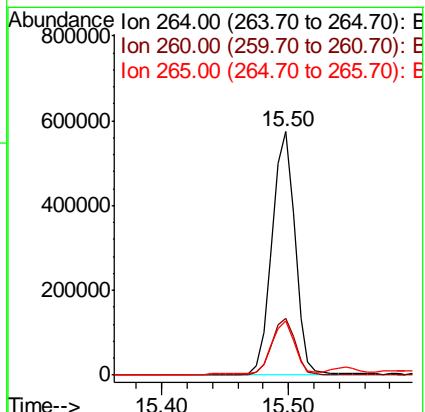
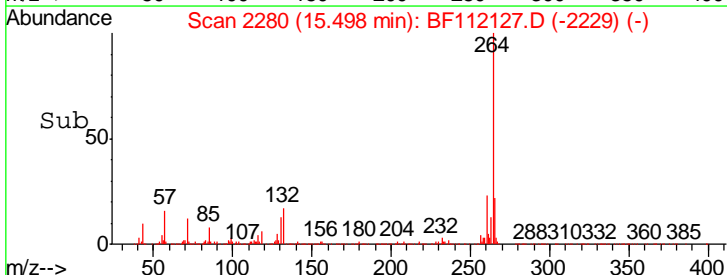
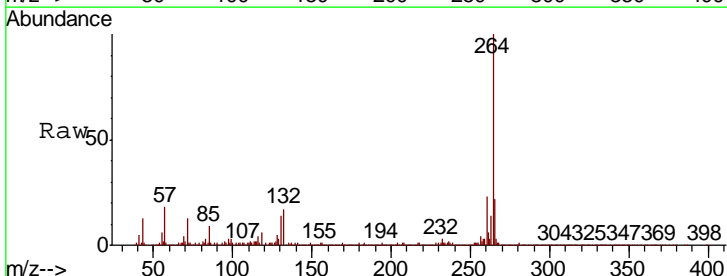
Tgt Ion	Resp	Lower	Upper
276	362685		
276	100		
138	23.6	22.6	34.0
277	25.5	20.3	30.5

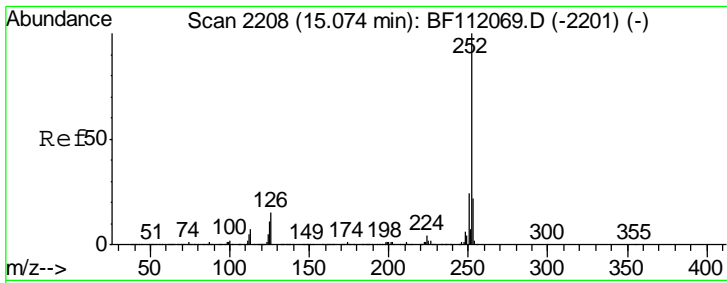
Manual Integrations
APPROVED
 Sohil
 1/21/2019 12:00:49 PM



#87
 Perylene-d12
 Concen: 20.000 ng
 RT: 15.50 min Scan# 2280
 Delta R.T. 0.00 min
 Lab File: BF112127.D
 Acq: 18 Jan 2019 16:32

Tgt Ion	Resp	Lower	Upper
264	720607		
264	100		
260	23.2	18.2	27.2
265	22.2	17.0	25.4





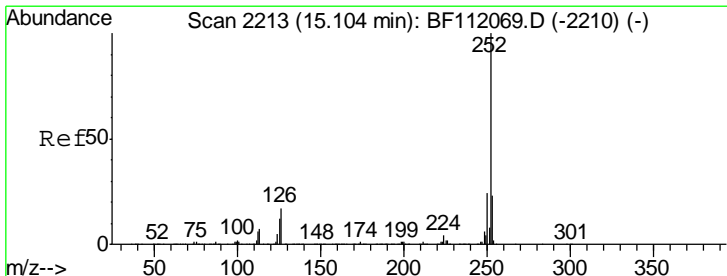
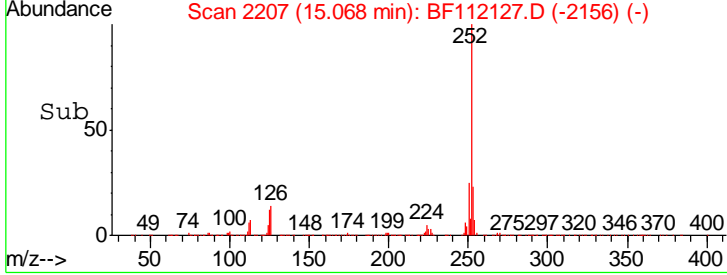
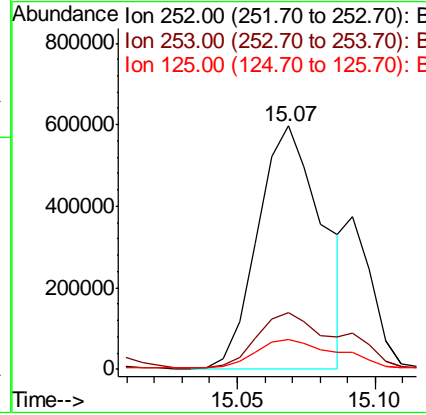
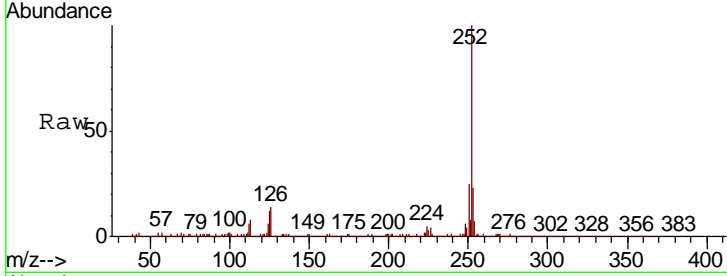
#88
 Benzo(b)fluoranthene
 Concen: 23.793 ng m
 RT: 15.07 min Scan# 2207
 Delta R.T. 0.00 min
 Lab File: BF112127.D
 Acq: 18 Jan 2019 16:32

Instrument :
 BNA_F
Client Sampled :
 COMP-7DL

Tgt Ion	Resp	Lower	Upper
252	100		
253	23.3	18.0	27.0
125	12.1	8.7	13.1

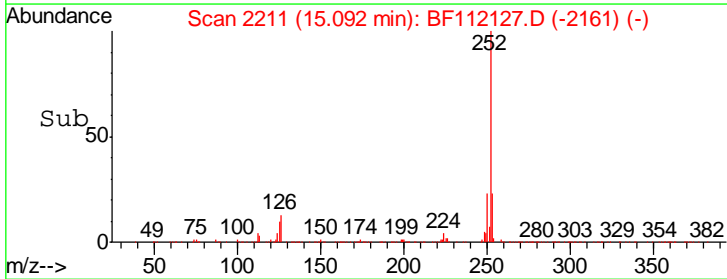
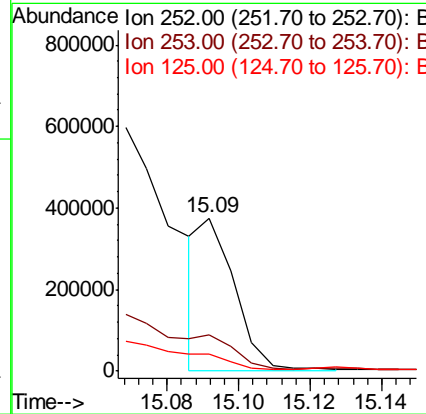
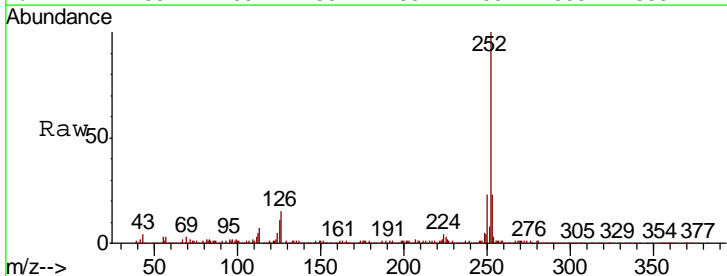
Manual Integrations
APPROVED

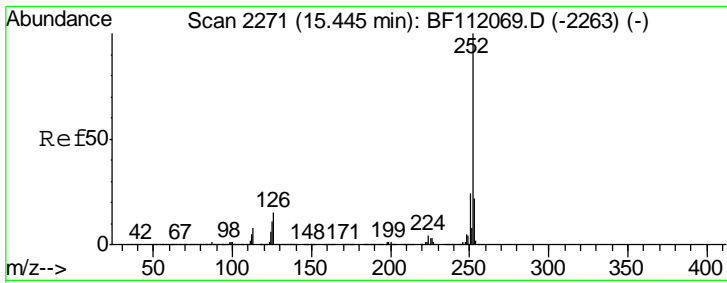
Sohil
 1/21/2019 12:00:49 PM



#89
 Benzo(k)fluoranthene
 Concen: 6.450 ng m
 RT: 15.09 min Scan# 2211
 Delta R.T. -0.01 min
 Lab File: BF112127.D
 Acq: 18 Jan 2019 16:32

Tgt Ion	Resp	Lower	Upper
252	100		
253	23.4	18.0	27.0
125	11.1	9.1	13.7





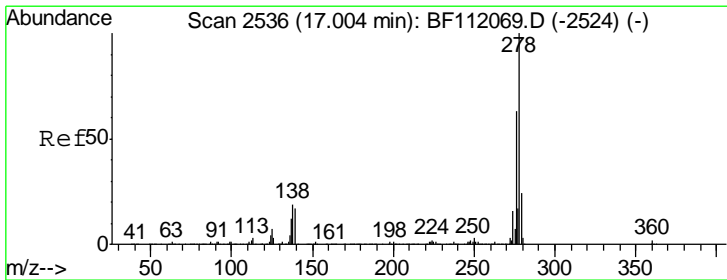
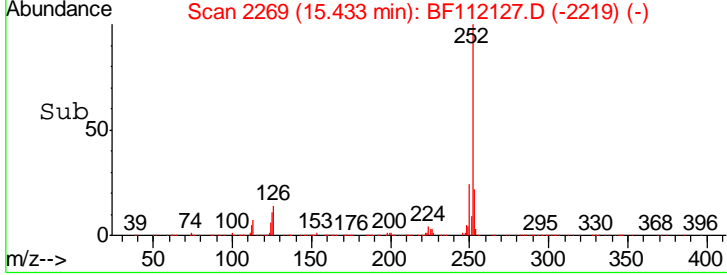
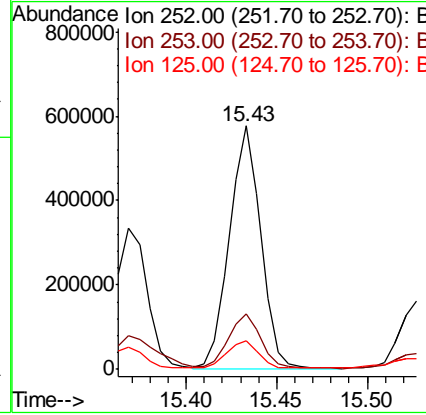
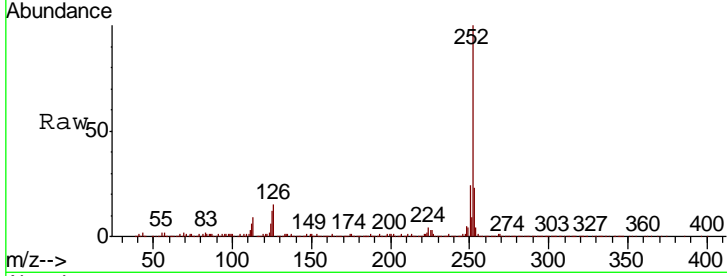
#90
 Benzo(a)pyrene
 Concen: 18.439 ng
 RT: 15.43 min Scan# 2269
 Delta R.T. -0.01 min
 Lab File: BF112127.D
 Acq: 18 Jan 2019 16:32

Instrument :
 BNA_F
 Client Sampled :
 COMP-7DL

Tgt Ion	Resp	Lower	Upper
252	691696		
253	23.0	17.5	26.3
125	11.7	9.0	13.4

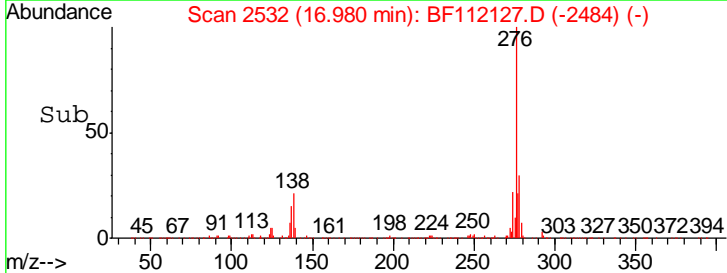
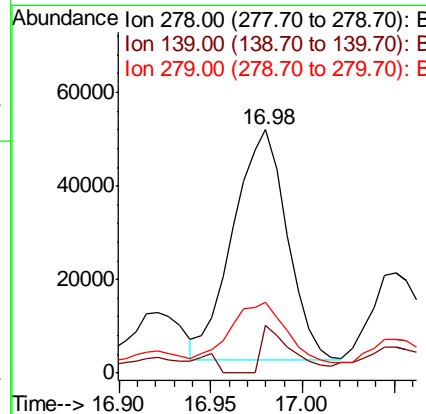
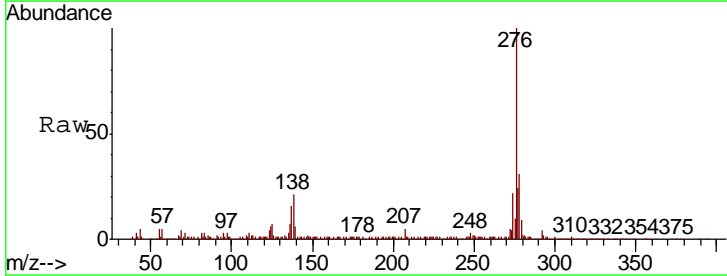
Manual Integrations
 APPROVED

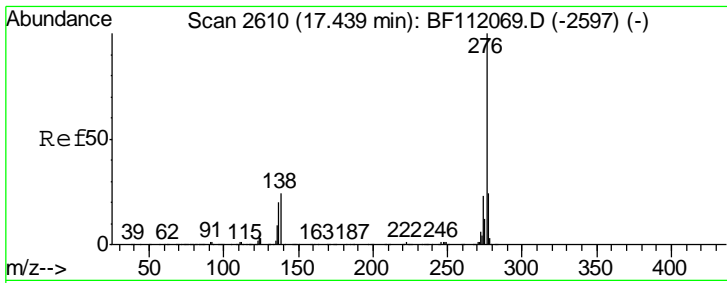
Sohil
 1/21/2019 12:00:49 PM



#91
 Dibenzo(a,h)anthracene
 Concen: 3.018 ng m
 RT: 16.98 min Scan# 2532
 Delta R.T. -0.02 min
 Lab File: BF112127.D
 Acq: 18 Jan 2019 16:32

Tgt Ion	Resp	Lower	Upper
278	100561		
139	19.6	13.7	20.5
279	29.2	19.0	28.6





#92
 Benzo(a,h,i)perylene
 Concen: 9.559 ng
 RT: 17.42 min Scan# 2607
 Delta R.T. -0.01 min
 Lab File: BF112127.D
 Acq: 18 Jan 2019 16:32

Instrument :
 BNA_F
ClientSampled :
 COMP-7DL

Tot Ion	Ratio	Lower	Upper
276	100		
277	23.8	19.4	29.0
138	22.7	19.1	28.7

Manual Integrations
APPROVED
 Sohil
 1/21/2019 12:00:49 PM

