

Data Path : Z:\svoasrv\HPCHEM1\BNA_F\Data\BF013023\
 Data File : BF132217.D
 Acq On : 30 Jan 2023 18:34
 Operator : CG\JU
 Sample : 01243-06
 Misc :
 ALS Vial : 7 Sample Multiplier: 1

Instrument :
 BNA_F
 ClientSampleId :
 TJRC-011923-B4-20-30

Quant Time: Jan 31 00:32:05 2023
 Quant Method : Z:\svoasrv\HPCHEM1\BNA_F\Methods\8270-BF012723.M
 Quant Title : ASP BNA STANDARDS FOR 5 POINT CALIBRATION
 QLast Update : Sat Jan 28 02:25:45 2023
 Response via : Initial Calibration

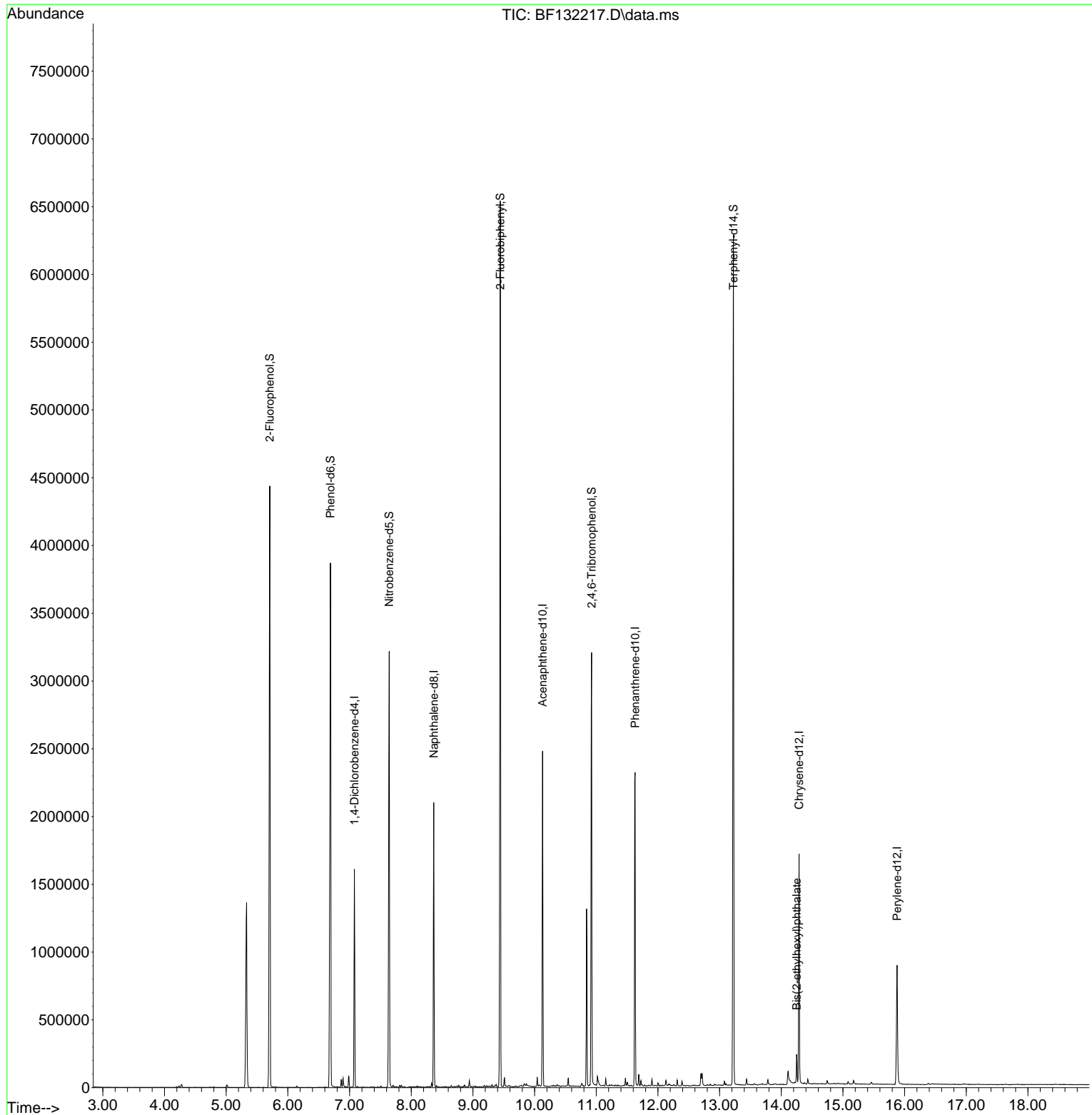
Compound	R.T.	QIon	Response	Conc	Units	Dev(Min)
Internal Standards						
1) 1,4-Dichlorobenzene-d4	7.078	152	221749	20.000	ng	0.00
21) Naphthalene-d8	8.366	136	829328	20.000	ng	0.00
39) Acenaphthene-d10	10.131	164	454440	20.000	ng	0.00
64) Phenanthrene-d10	11.630	188	894067	20.000	ng	# 0.00
76) Chrysene-d12	14.289	240	532037	20.000	ng	0.00
86) Perylene-d12	15.877	264	420724	20.000	ng	0.00
System Monitoring Compounds						
5) 2-Fluorophenol	5.707	112	1431814	107.431	ng	0.01
7) Phenol-d6	6.690	99	1805095	108.017	ng	0.00
23) Nitrobenzene-d5	7.642	82	1081696	68.284	ng	0.00
42) 2,4,6-Tribromophenol	10.925	330	389931	92.663	ng	0.00
45) 2-Fluorobiphenyl	9.442	172	1937569	62.737	ng	0.00
79) Terphenyl-d14	13.224	244	2216499	65.454	ng	0.00
Target Compounds						Qvalue
84) Bis(2-ethylhexyl)phtha...	14.248	149	61012	3.500	ng	95

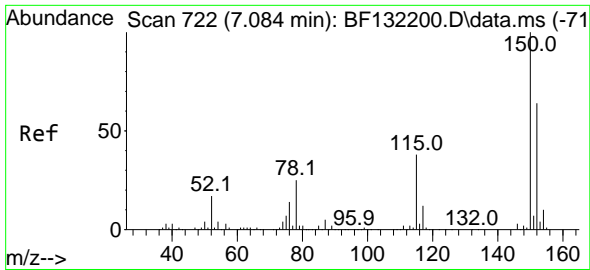
(#) = qualifier out of range (m) = manual integration (+) = signals summed

Data Path : Z:\svoasrv\HPCHEM1\BNA_F\Data\BF013023\
 Data File : BF132217.D
 Acq On : 30 Jan 2023 18:34
 Operator : CG\JU
 Sample : 01243-06
 Misc :
 ALS Vial : 7 Sample Multiplier: 1

Instrument :
 BNA_F
 ClientSampleId :
 TJRC-011923-B4-20-30

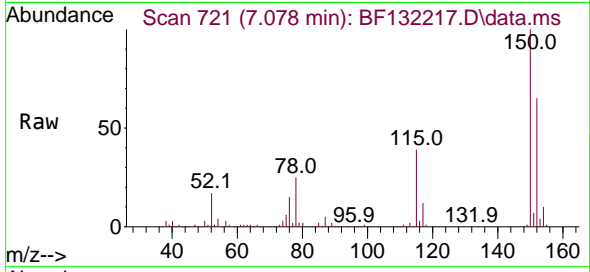
Quant Time: Jan 31 00:32:05 2023
 Quant Method : Z:\svoasrv\HPCHEM1\BNA_F\Methods\8270-BF012723.M
 Quant Title : ASP BNA STANDARDS FOR 5 POINT CALIBRATION
 QLast Update : Sat Jan 28 02:25:45 2023
 Response via : Initial Calibration



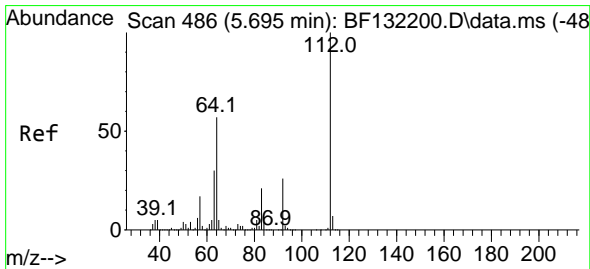
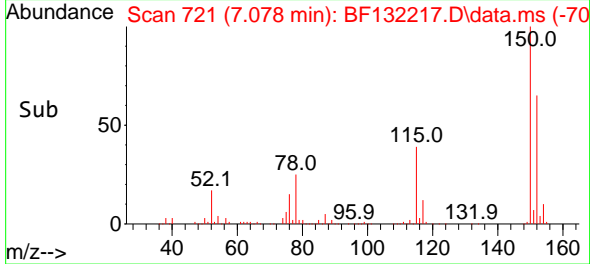
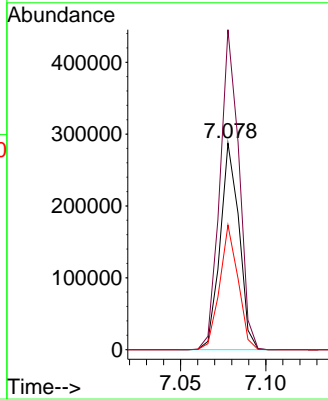


#1
 1,4-Dichlorobenzene-d4
 Concen: 20.000 ng
 RT: 7.078 min Scan# 71
 Delta R.T. -0.006 min
 Lab File: BF132217.D
 Acq: 30 Jan 2023 18:34

Instrument :
 BNA_F
 ClientSampleId :
 TJRC-011923-B4-20-30

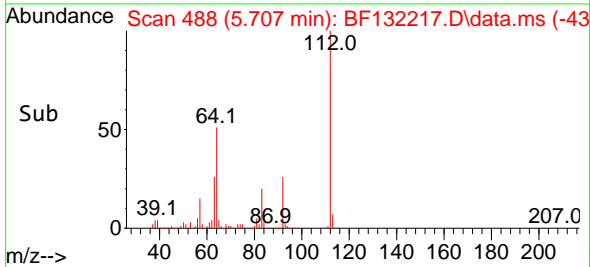
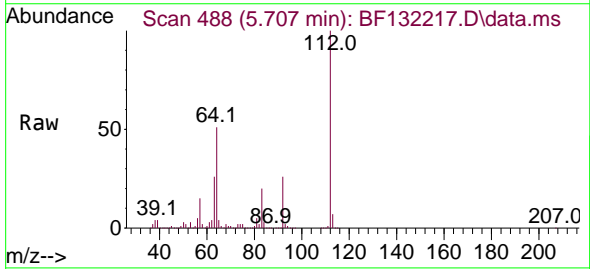
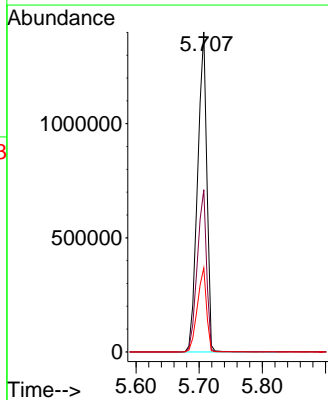


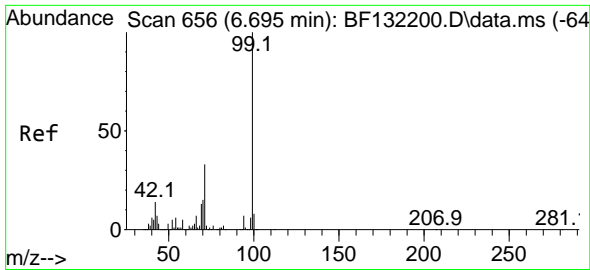
Tgt Ion:152 Resp: 221749
 Ion Ratio Lower Upper
 152 100
 150 155.0 124.5 186.7
 115 60.3 47.0 70.6



#5
 2-Fluorophenol
 Concen: 107.431 ng
 RT: 5.707 min Scan# 488
 Delta R.T. 0.012 min
 Lab File: BF132217.D
 Acq: 30 Jan 2023 18:34

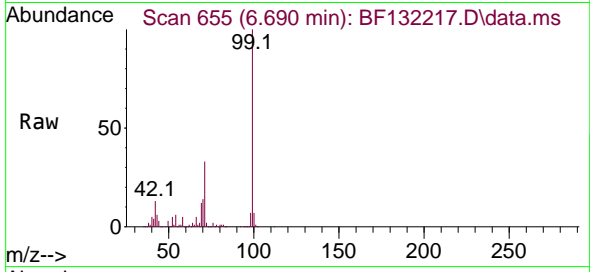
Tgt Ion:112 Resp: 1431814
 Ion Ratio Lower Upper
 112 100
 64 50.7 45.5 68.3
 63 26.2 23.7 35.5



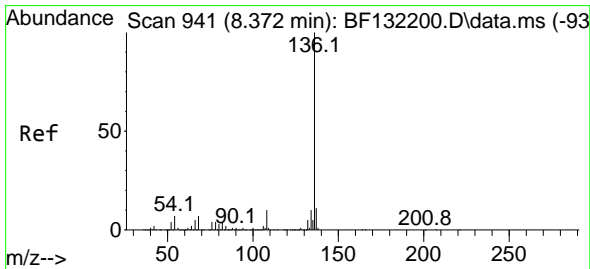
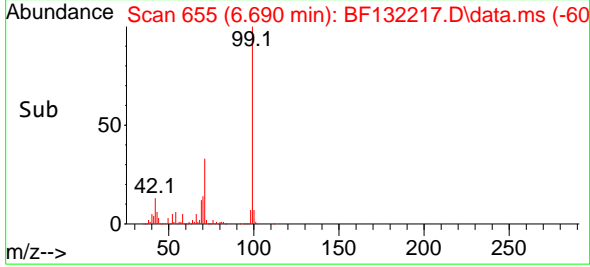
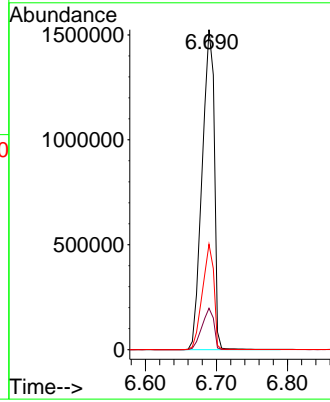


#7
 Phenol-d6
 Concen: 108.017 ng
 RT: 6.690 min Scan# 61
 Delta R.T. -0.006 min
 Lab File: BF132217.D
 Acq: 30 Jan 2023 18:34

Instrument :
 BNA_F
 ClientSampleId :
 TJRC-011923-B4-20-30

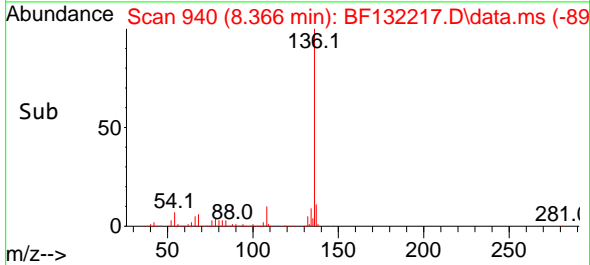
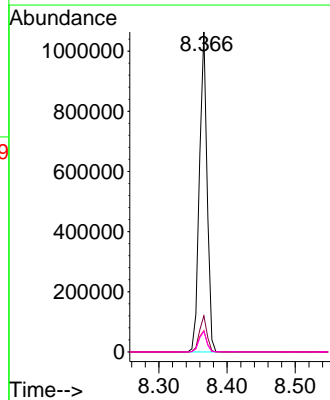
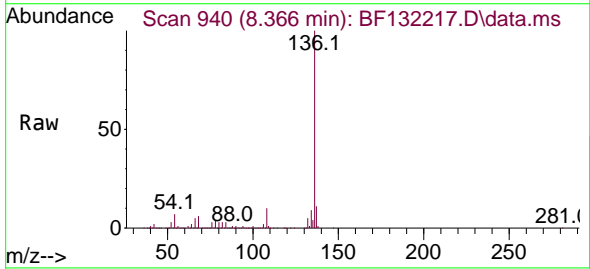


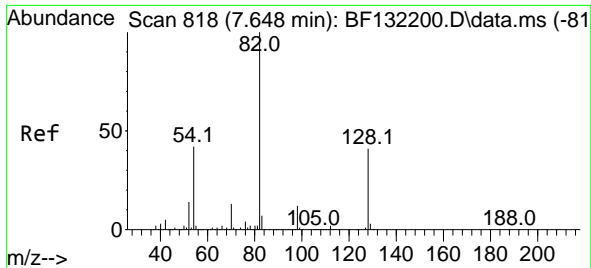
Tgt Ion: 99 Resp: 1805095
 Ion Ratio Lower Upper
 99 100
 42 12.9 11.3 16.9
 71 32.9 26.3 39.5



#21
 Naphthalene-d8
 Concen: 20.000 ng
 RT: 8.366 min Scan# 940
 Delta R.T. -0.006 min
 Lab File: BF132217.D
 Acq: 30 Jan 2023 18:34

Tgt Ion: 136 Resp: 829328
 Ion Ratio Lower Upper
 136 100
 137 11.3 9.0 13.4
 54 6.6 5.4 8.2
 68 6.4 5.4 8.2

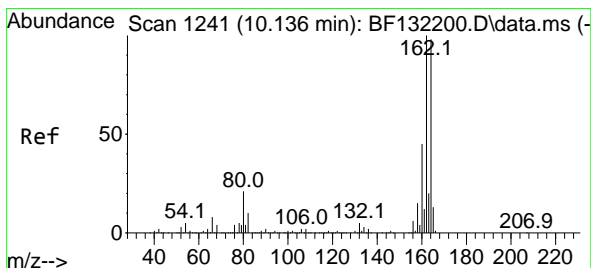
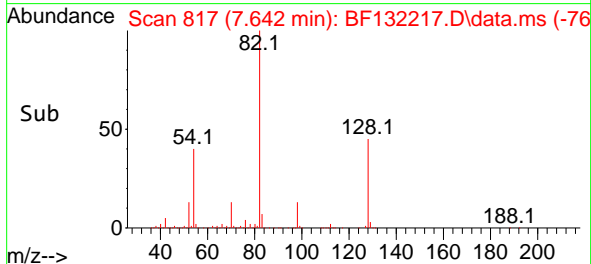
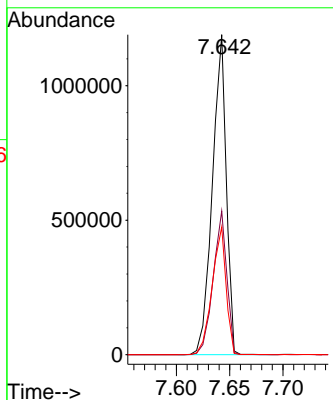
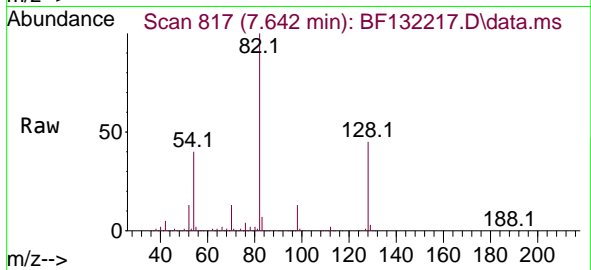




#23
 Nitrobenzene-d5
 Concen: 68.284 ng
 RT: 7.642 min Scan# 81
 Delta R.T. -0.006 min
 Lab File: BF132217.D
 Acq: 30 Jan 2023 18:34

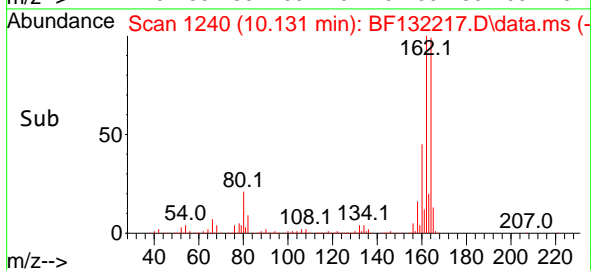
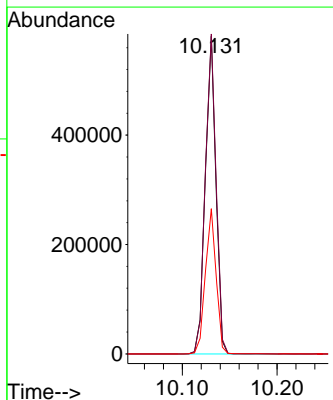
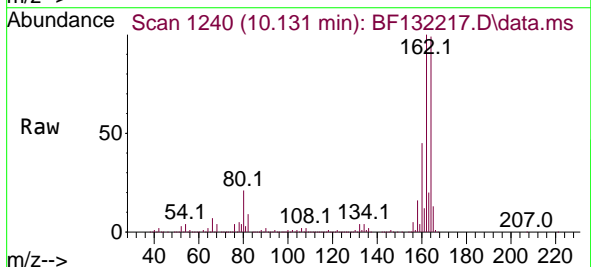
Instrument :
 BNA_F
 ClientSampleId :
 TJRC-011923-B4-20-30

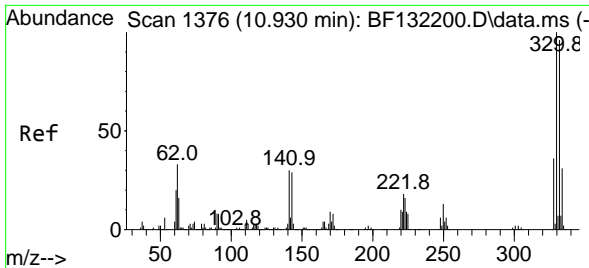
Tgt Ion: 82 Resp: 1081696
 Ion Ratio Lower Upper
 82 100
 128 44.9 32.7 49.1
 54 39.9 33.3 49.9



#39
 Acenaphthene-d10
 Concen: 20.000 ng
 RT: 10.131 min Scan# 1240
 Delta R.T. -0.006 min
 Lab File: BF132217.D
 Acq: 30 Jan 2023 18:34

Tgt Ion:164 Resp: 454440
 Ion Ratio Lower Upper
 164 100
 162 100.7 81.5 122.3
 160 45.7 37.0 55.4



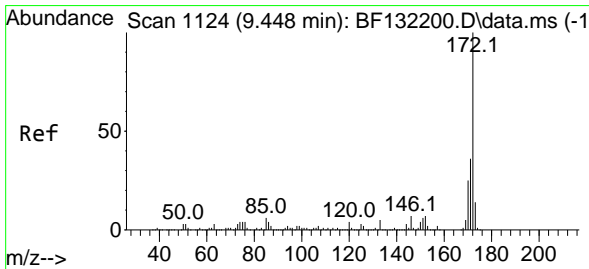
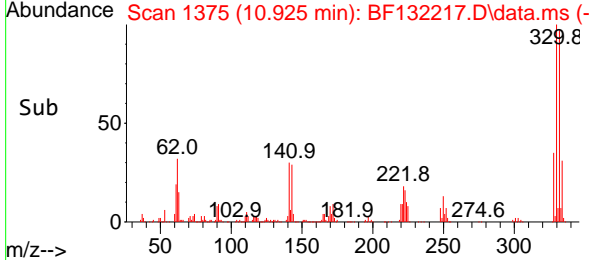
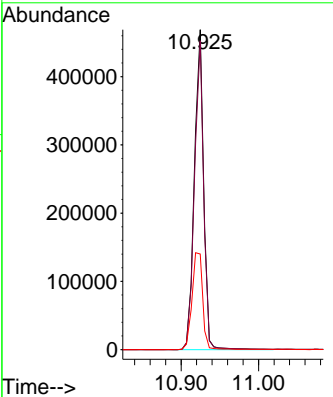
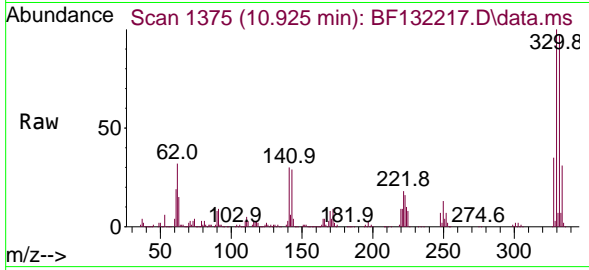


#42
 2,4,6-Tribromophenol
 Concen: 92.663 ng
 RT: 10.925 min Scan# 111
 Delta R.T. -0.006 min
 Lab File: BF132217.D
 Acq: 30 Jan 2023 18:34

Instrument : BNA_F
 ClientSampleId : TJRC-011923-B4-20-30

Tgt Ion:330 Resp: 389931

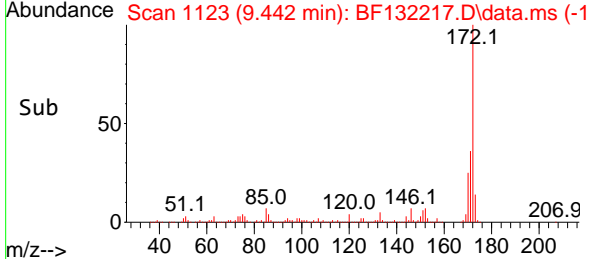
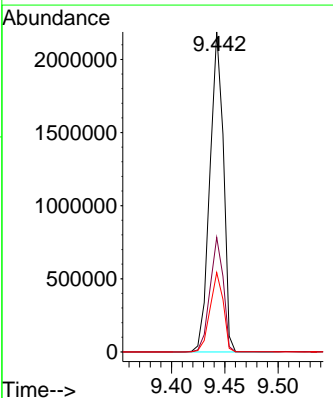
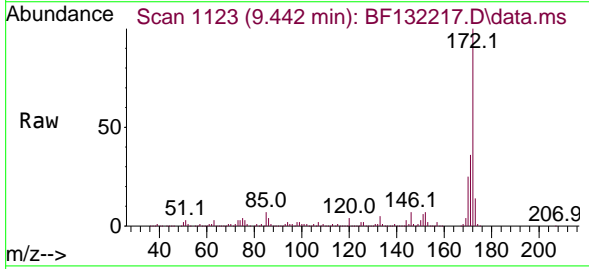
Ion	Ratio	Lower	Upper
330	100		
332	95.7	75.7	113.5
141	34.8	30.7	46.1

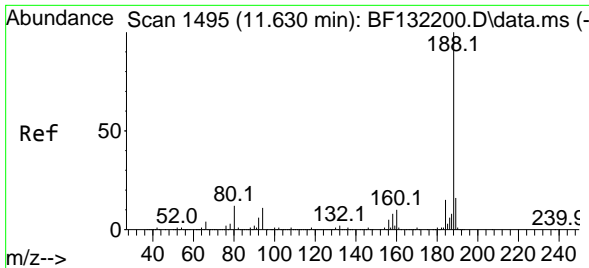


#45
 2-Fluorobiphenyl
 Concen: 62.737 ng
 RT: 9.442 min Scan# 1123
 Delta R.T. -0.006 min
 Lab File: BF132217.D
 Acq: 30 Jan 2023 18:34

Tgt Ion:172 Resp: 1937569

Ion	Ratio	Lower	Upper
172	100		
171	35.8	29.0	43.6
170	24.8	20.2	30.4

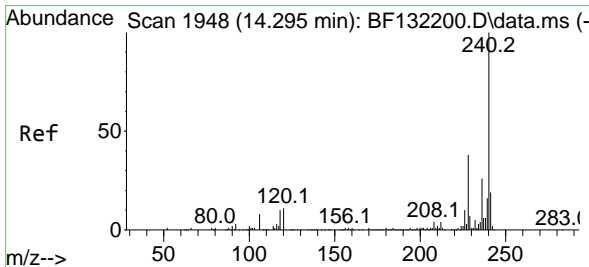
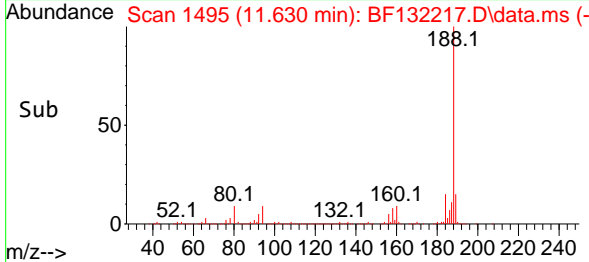
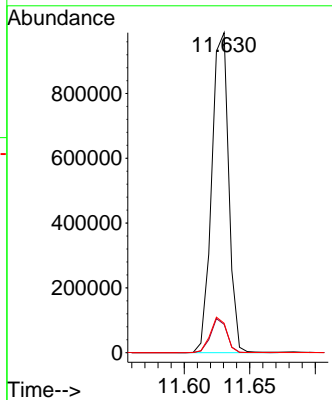
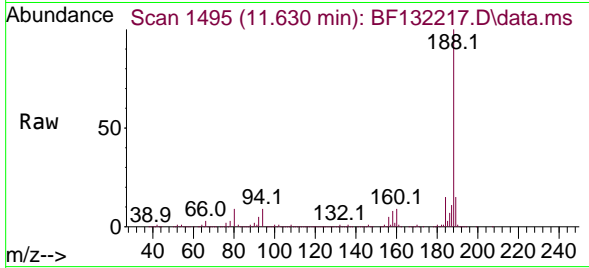




#64
 Phenanthrene-d10
 Concen: 20.000 ng
 RT: 11.630 min Scan# 1495
 Delta R.T. 0.000 min
 Lab File: BF132217.D
 Acq: 30 Jan 2023 18:34

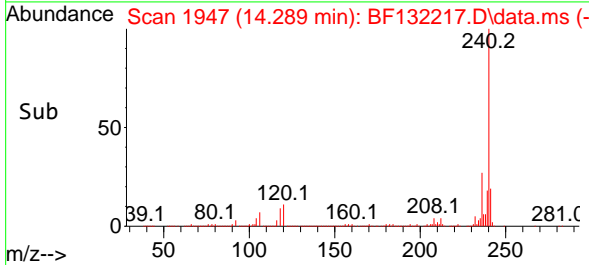
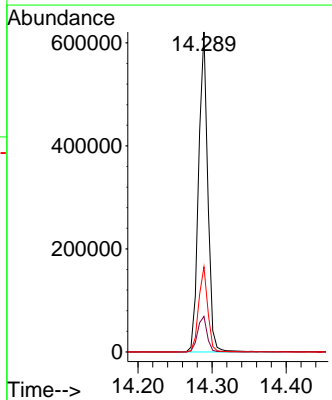
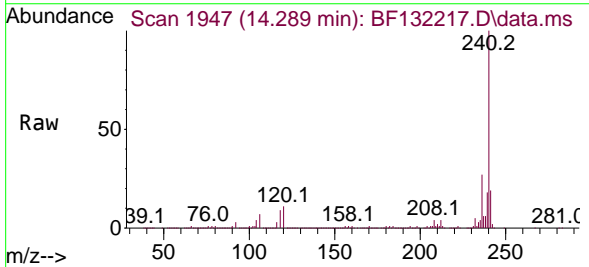
Instrument : BNA_F
 ClientSampleId : TJRC-011923-B4-20-30

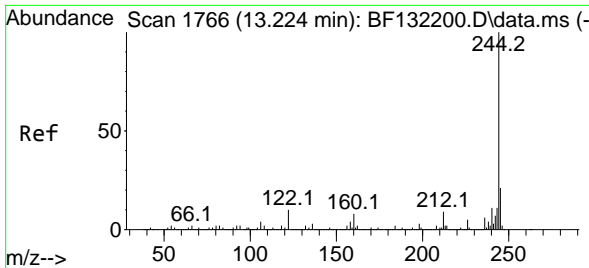
Tgt Ion	Resp	Lower	Upper
188	100		
94	8.8	8.5	12.7
80	9.2	9.2	13.8



#76
 Chrysene-d12
 Concen: 20.000 ng
 RT: 14.289 min Scan# 1947
 Delta R.T. -0.006 min
 Lab File: BF132217.D
 Acq: 30 Jan 2023 18:34

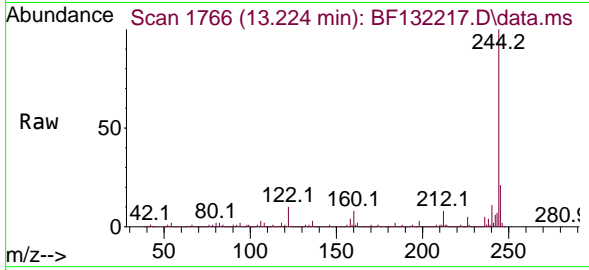
Tgt Ion	Resp	Lower	Upper
240	100		
120	11.1	9.0	13.4
236	26.6	20.8	31.2



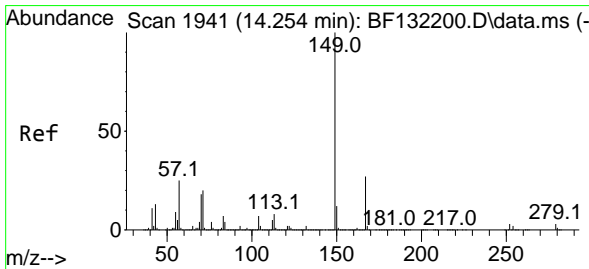
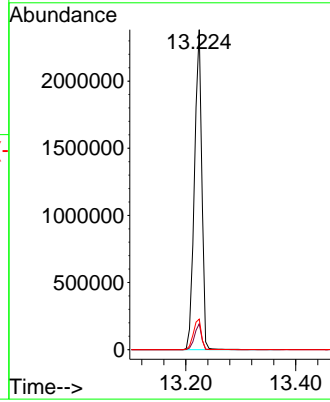
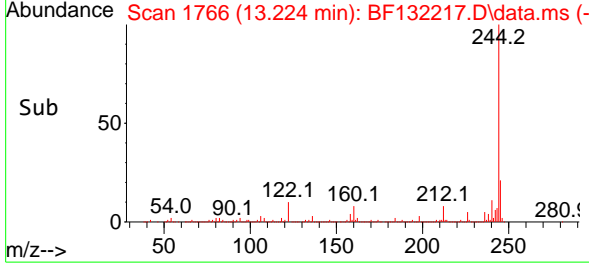


#79
 Terphenyl-d14
 Concen: 65.454 ng
 RT: 13.224 min Scan# 11
 Delta R.T. 0.000 min
 Lab File: BF132217.D
 Acq: 30 Jan 2023 18:34

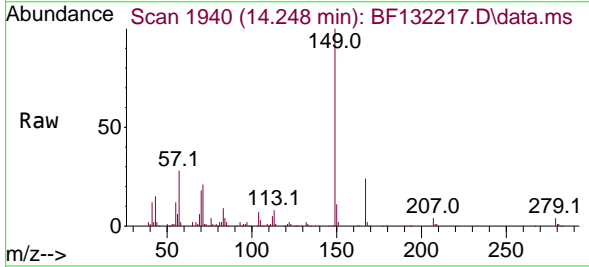
Instrument :
 BNA_F
 ClientSampleId :
 TJRC-011923-B4-20-30



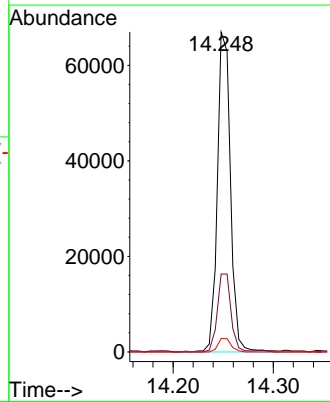
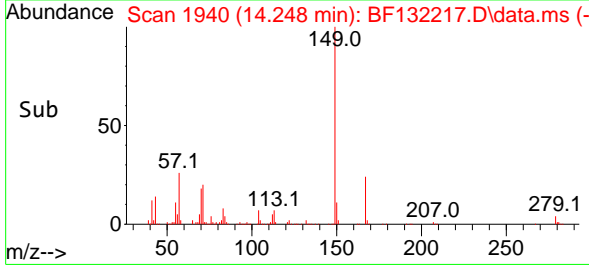
Tgt Ion:244 Resp: 2216499
 Ion Ratio Lower Upper
 244 100
 212 8.1 6.8 10.2
 122 9.5 8.3 12.5

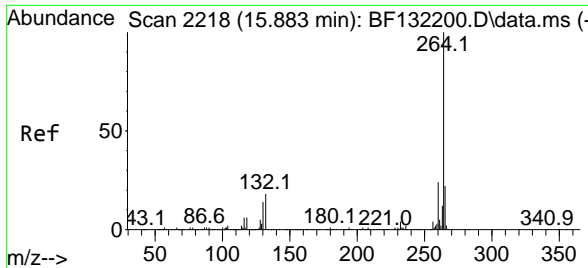


#84
 Bis(2-ethylhexyl)phthalate
 Concen: 3.500 ng
 RT: 14.248 min Scan# 1940
 Delta R.T. -0.006 min
 Lab File: BF132217.D
 Acq: 30 Jan 2023 18:34



Tgt Ion:149 Resp: 61012
 Ion Ratio Lower Upper
 149 100
 167 24.3 21.7 32.5
 279 4.2 2.8 4.2





#86
 Perylene-d12
 Concen: 20.000 ng
 RT: 15.877 min Scan# 21
 Delta R.T. -0.006 min
 Lab File: BF132217.D
 Acq: 30 Jan 2023 18:34

Instrument :
 BNA_F
 ClientSampleId :
 TJRC-011923-B4-20-30

Tgt Ion:264 Resp: 420724

Ion	Ratio	Lower	Upper
264	100		
260	23.7	18.8	28.2
265	21.8	17.4	26.2

