

Data Path : Z:\SVOASRV\HPCHEM1\BNA F\DATA\BF020719\  
 Data File : BF112441.D  
 Acq On : 7 Feb 2019 16:39  
 Operator : JU/SJ  
 Sample : K1401-03  
 Misc :  
 ALS Vial : 11 Sample Multiplier: 1

Instrument :  
 BNA\_F  
 Client Sampled :  
 RBR-200028

Manual Integrations  
 APPROVED

Sohil  
 2/11/2019 4:50:01 PM

Quant Time: Feb 09 05:52:09 2019  
 Quant Method : Z:\SVOASRV\HPCHEM1\BNA F\METHODS\8270-BF012519.M  
 Quant Title : ASP BNA STANDARDS FOR 5 POINT CALIBRATION  
 QLast Update : Mon Jan 28 10:38:18 2019  
 Response via : Initial Calibration

Internal Standards	R.T.	QIon	Response	Conc	Units	Dev(Min)	
1) 1,4-Dichlorobenzene-d4	6.83	152	150531	20.00	ng	-0.01	
21) Naphthalene-d8	8.12	136	589687	20.00	ng	-0.01	
39) Acenaphthene-d10	9.87	164	250403	20.00	ng	-0.01	
64) Phenanthrene-d10	11.37	188	336798	20.00	ng	0.00	
76) Chrysene-d12	14.02	240	312843	20.00	ng	0.01	
87) Perylene-d12	15.48	264	311779	20.00	ng	0.00	
System Monitoring Compounds							
5) 2-Fluorophenol	5.47	112	803103	113.32	ng	-0.01	
7) Phenol-d6	6.48	99	1011581	102.72	ng	-0.01	
23) Nitrobenzene-d5	7.40	82	623065	60.88	ng	-0.01	
42) 2,4,6-Tribromophenol	10.68	330	226279	77.64	ng	0.00	
45) 2-Fluorobiphenyl	9.19	172	1059818	59.86	ng	-0.01	
79) Terphenyl-d14	12.96	244	703258	42.34	ng	0.00	
Target Compounds							
31) Naphthalene	8.14	128	2498970	90.620	ng		99
37) 2-Methylnaphthalene	8.83	142	843422	44.677	ng		96
38) 1-Methylnaphthalene	8.93	142	526897	29.119	ng		97
46) 1,1'-Biphenyl	9.29	154	292771	13.374	ng		98
49) Acenaphthylene	9.73	152	94124	3.783	ng	#	79
50) Dimethylphthalate	9.59	163	86558	4.449	ng	#	89
52) Acenaphthene	9.91	154	897573	60.387	ng		100
55) Dibenzofuran	10.09	168	1021014	44.951	ng		94
58) Fluorene	10.43	166	975250	57.376	ng		96
71) Phenanthrene	11.41	178	2944938	168.189	ng		98
72) Anthracene	11.46	178	698828	40.066	ng		98
73) Carbazole	11.61	167	348561	20.259	ng	#	89
75) Fluoranthene	12.62	202	3428251	182.547	ng		99
78) Pyrene	12.84	202	2817833	130.097	ng		98
81) Benzo(a)anthracene	14.01	228	864546	47.010	ng		100
83) Chrysene	14.04	228	984278	56.069	ng		98
86) Indeno(1,2,3-cd)pyrene	16.96	276	151845	10.916	ng	#	92
88) Benzo(b)fluoranthene	15.06	252	915154m	49.081	ng		
89) Benzo(k)fluoranthene	15.08	252	238362m	13.346	ng		
90) Benzo(a)pyrene	15.42	252	409731	24.422	ng		99
91) Dibenzo(a,h)anthracene	16.96	278	39346m	2.910	ng		
92) Benzo(g,h,i)perylene	17.40	276	123559	9.686	ng		98

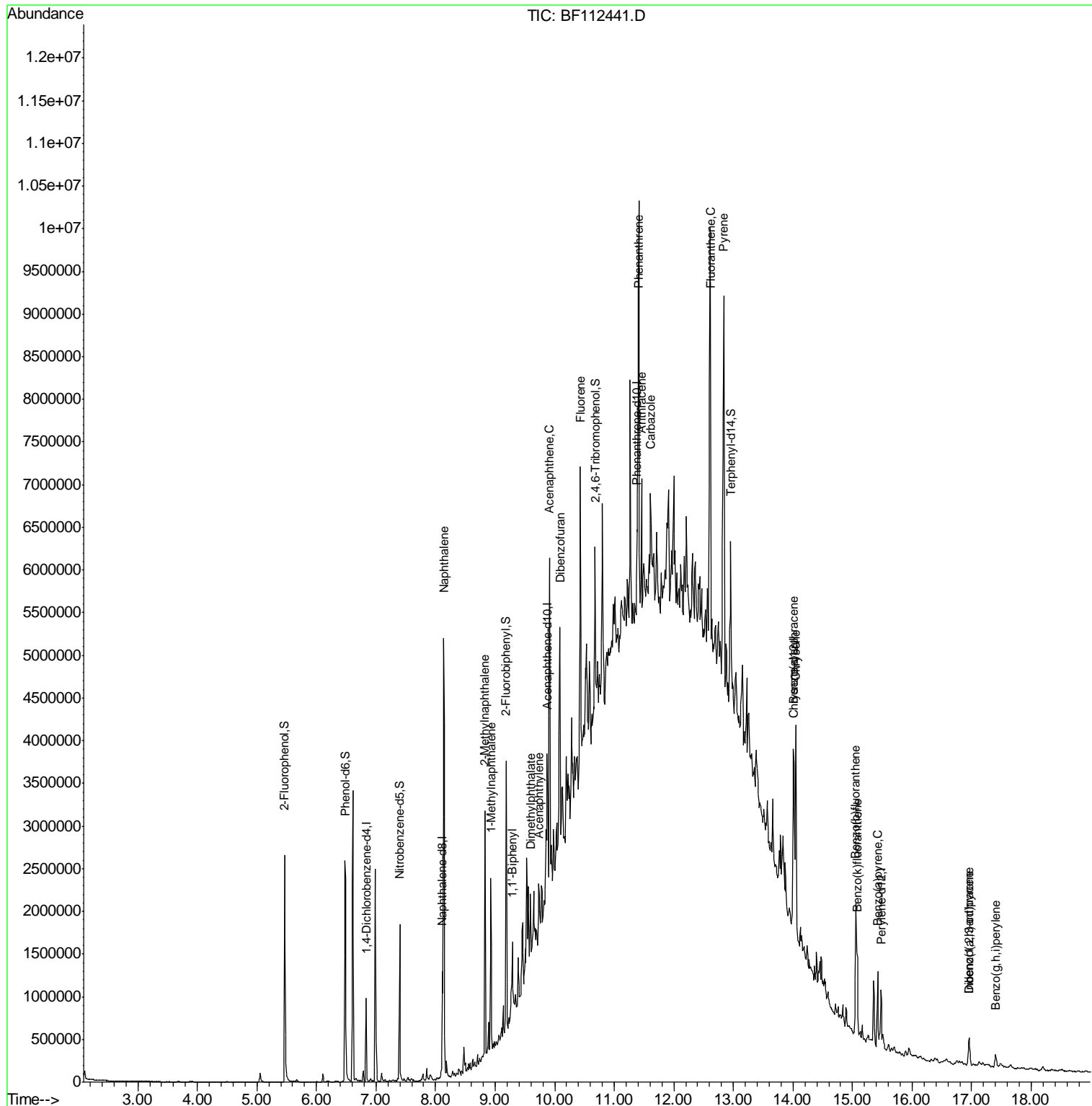
(#) = qualifier out of range (m) = manual integration (+) = signals summed

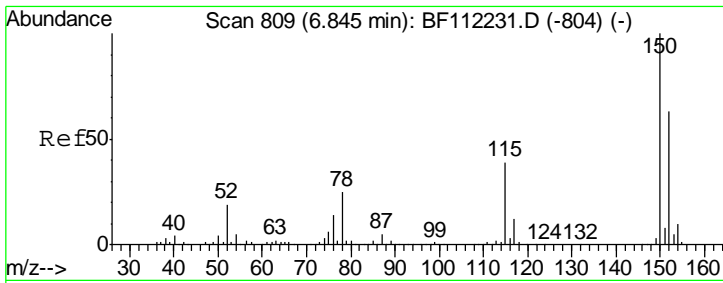
Data Path : Z:\SVOASRV\HPCHEM1\BNA F\DATA\BF020719\  
 Data File : BF112441.D  
 Acq On : 7 Feb 2019 16:39  
 Operator : JU/SJ  
 Sample : K1401-03  
 Misc :  
 ALS Vial : 11 Sample Multiplier: 1

Instrument :  
 BNA\_F  
 Client Sampled :  
 RBR-200028

Manual Integrations  
 APPROVED  
 Sohil  
 2/11/2019 4:50:01 PM

Quant Time: Feb 09 05:52:09 2019  
 Quant Method : Z:\SVOASRV\HPCHEM1\BNA F\METHODS\8270-BF012519.M  
 Quant Title : ASP BNA STANDARDS FOR 5 POINT CALIBRATION  
 QLast Update : Mon Jan 28 10:38:18 2019  
 Response via : Initial Calibration





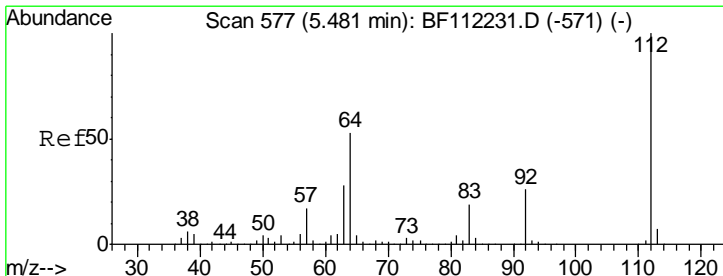
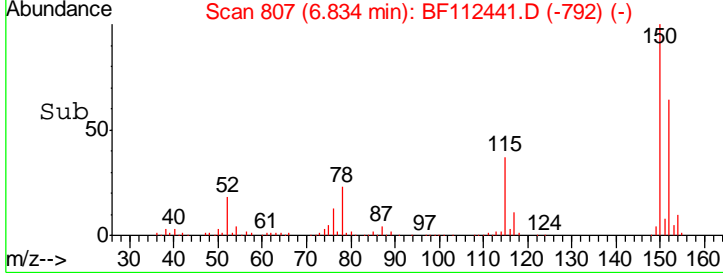
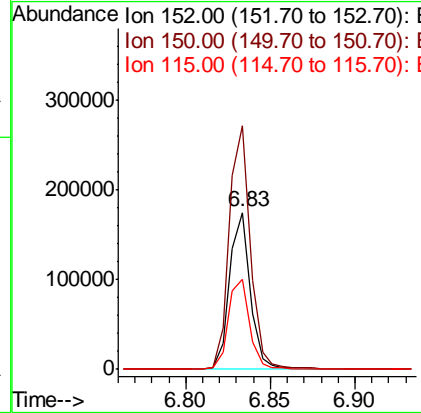
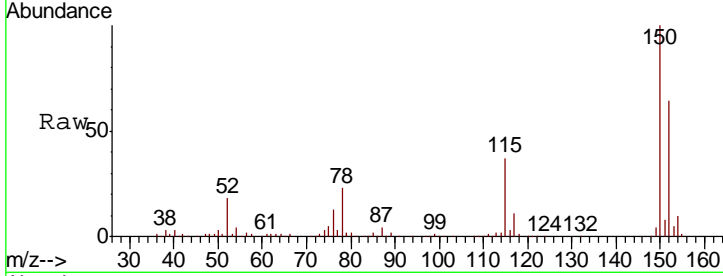
#1  
 1,4-Dichlorobenzene-d4  
 Concen: 20.000 ng  
 RT: 6.83 min Scan# 807  
 Delta R.T. -0.01 min  
 Lab File: BF112441.D  
 Acq: 7 Feb 2019 16:39

**Instrument :**  
 BNA\_F  
**ClientSampled :**  
 RBR-200028

Tgt Ion	Resp	Lower	Upper
152	150531		
150	155.1	127.4	191.0
115	57.1	45.5	68.3

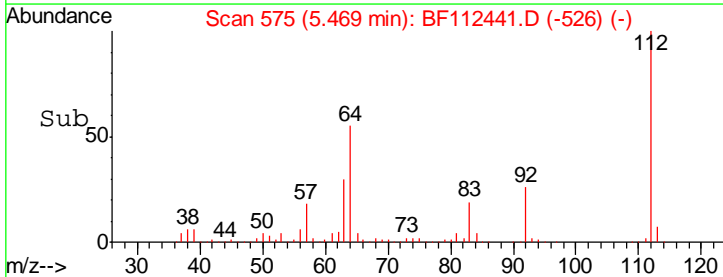
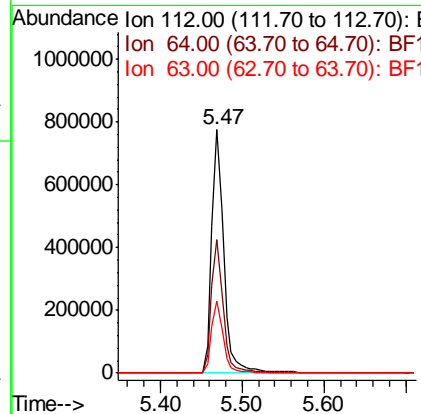
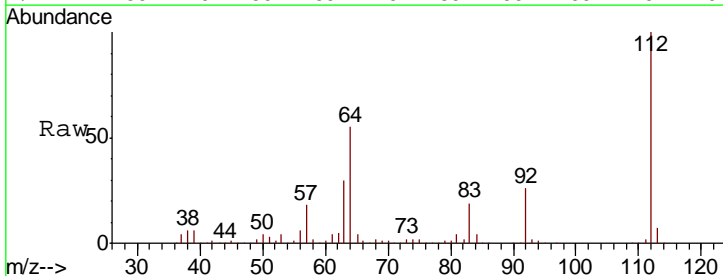
**Manual Integrations**  
**APPROVED**

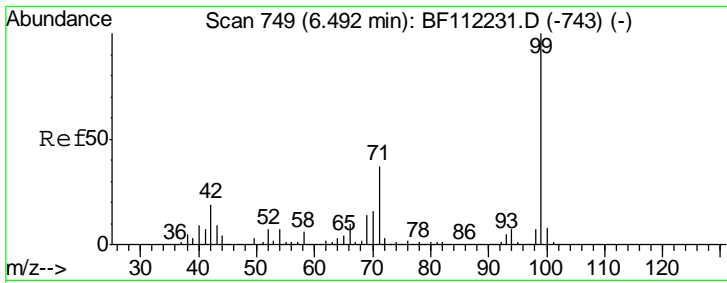
Sohil  
 2/11/2019 4:50:01 PM



#5  
 2-Fluorophenol  
 Concen: 113.322 ng  
 RT: 5.47 min Scan# 575  
 Delta R.T. -0.01 min  
 Lab File: BF112441.D  
 Acq: 7 Feb 2019 16:39

Tgt Ion	Resp	Lower	Upper
112	803103		
64	55.1	45.7	68.5
63	29.6	23.6	35.4





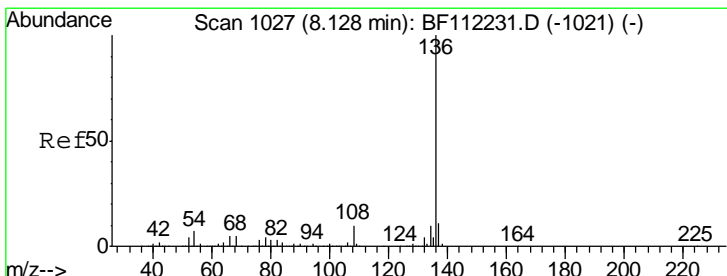
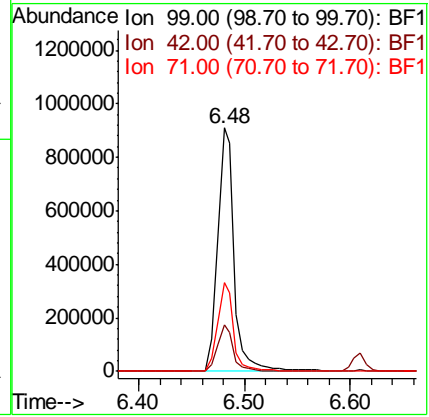
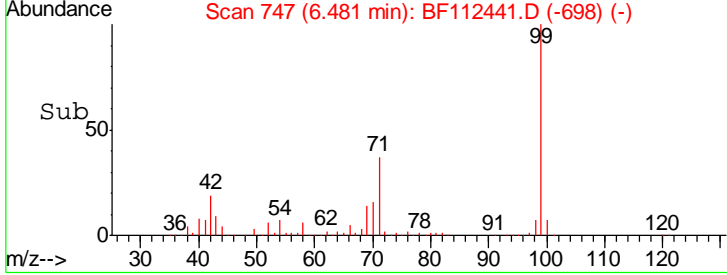
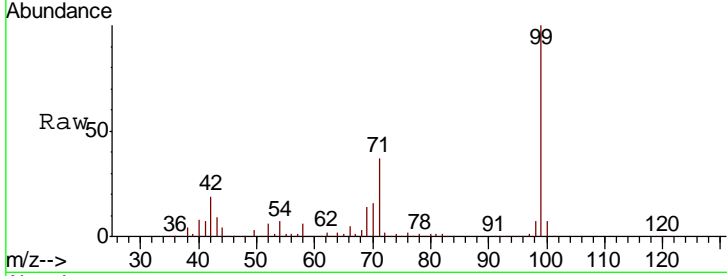
#7  
 Phenol-d6  
 Concen: 102.723 ng  
 RT: 6.48 min Scan# 747  
 Delta R.T. -0.01 min  
 Lab File: BF112441.D  
 Acq: 7 Feb 2019 16:39

**Instrument :**  
 BNA\_F  
**ClientSampled :**  
 RBR-200028

Tgt Ion: 99 Resp: 1011581

Ion	Ratio	Lower	Upper
99	100		
42	19.3	15.1	22.7
71	36.7	26.9	40.3

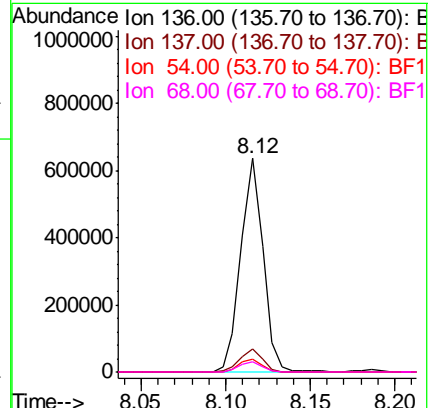
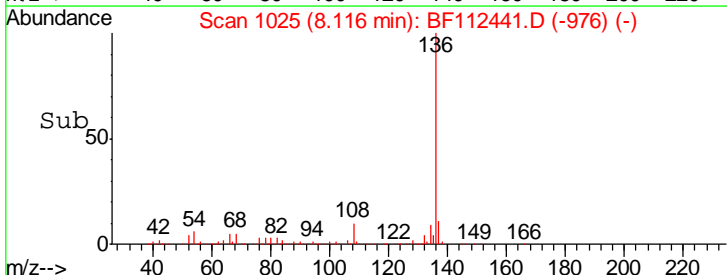
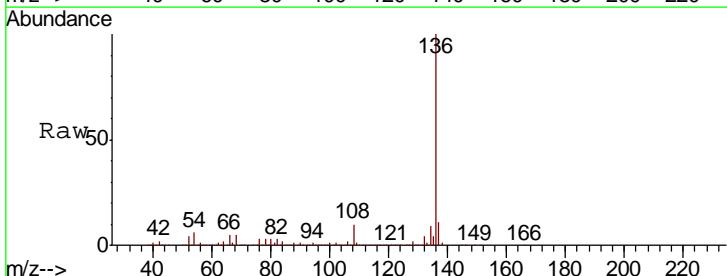
**Manual Integrations**  
**APPROVED**  
 Sohil  
 2/11/2019 4:50:01 PM

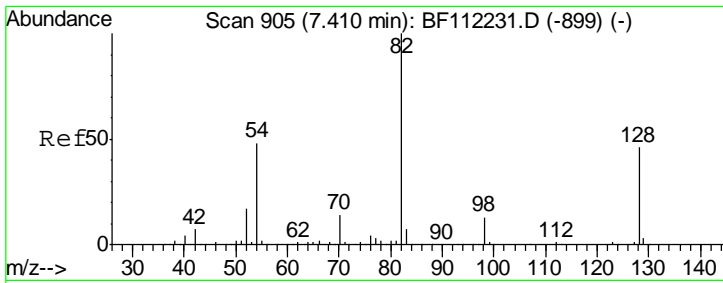


#21  
 Naphthalene-d8  
 Concen: 20.000 ng  
 RT: 8.12 min Scan# 1025  
 Delta R.T. -0.01 min  
 Lab File: BF112441.D  
 Acq: 7 Feb 2019 16:39

Tgt Ion: 136 Resp: 589687

Ion	Ratio	Lower	Upper
136	100		
137	11.1	9.1	13.7
54	6.1	5.9	8.9
68	4.9	5.1	7.7#





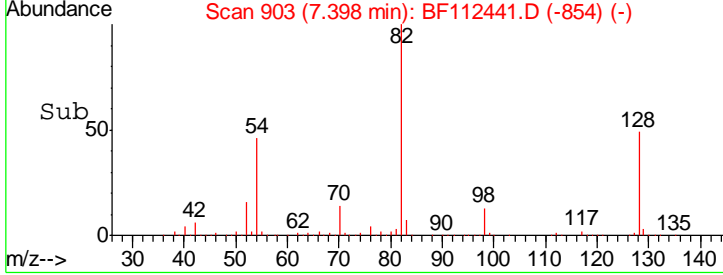
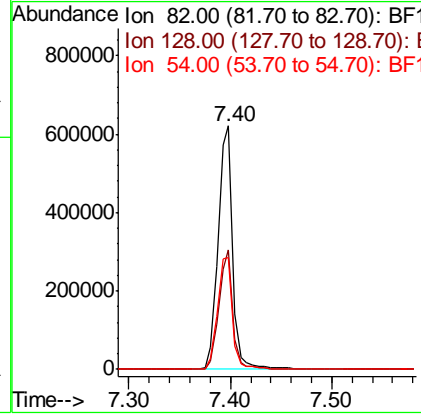
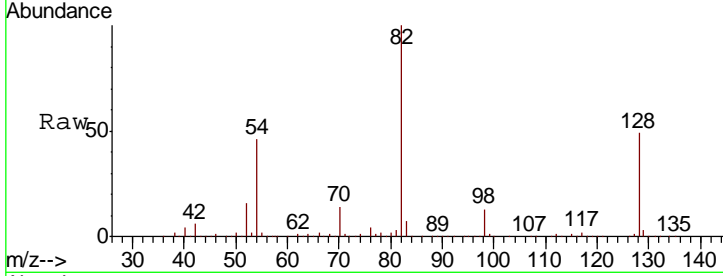
#23  
 Nitrobenzene-d5  
 Concen: 60.881 ng  
 RT: 7.40 min Scan# 903  
 Delta R.T. -0.01 min  
 Lab File: BF112441.D  
 Acq: 7 Feb 2019 16:39

**Instrument :**  
 BNA\_F  
**ClientSampled :**  
 RBR-200028

Tgt Ion	Resp	Lower	Upper
82	100		
128	49.0	37.8	56.8
54	46.0	39.7	59.5

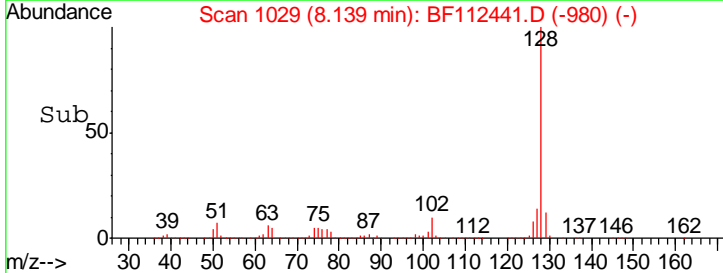
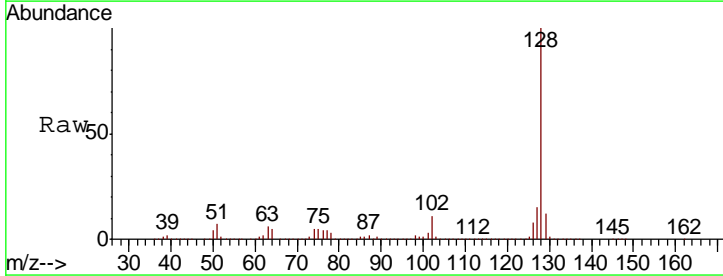
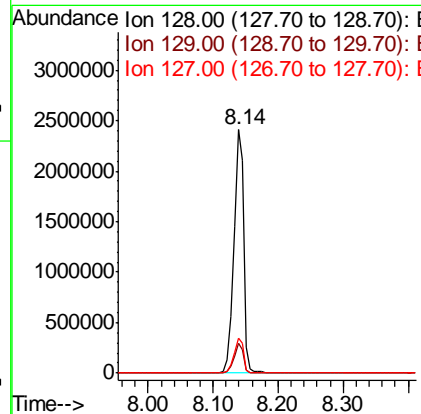
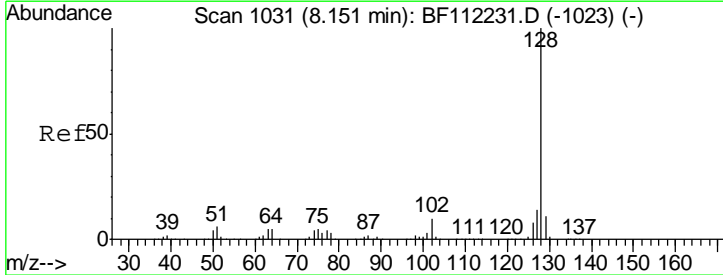
**Manual Integrations**  
**APPROVED**

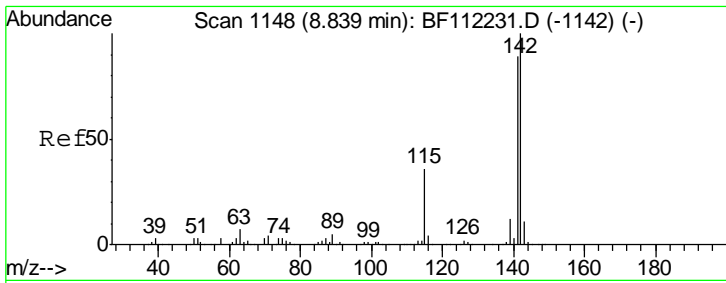
Sohil  
 2/11/2019 4:50:01 PM



#31  
 Naphthalene  
 Concen: 90.620 ng  
 RT: 8.14 min Scan# 1029  
 Delta R.T. -0.01 min  
 Lab File: BF112441.D  
 Acq: 7 Feb 2019 16:39

Tgt Ion	Resp	Lower	Upper
128	100		
129	12.1	9.6	14.4
127	14.5	11.1	16.7





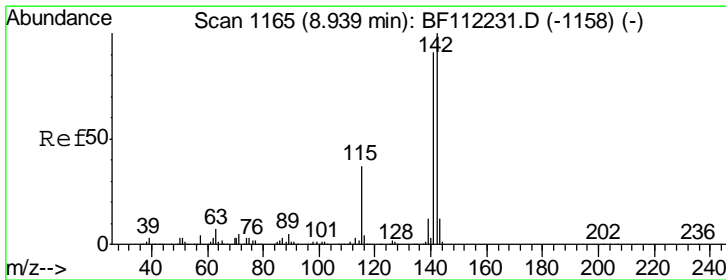
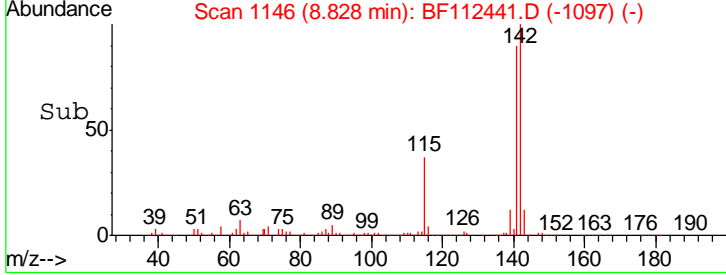
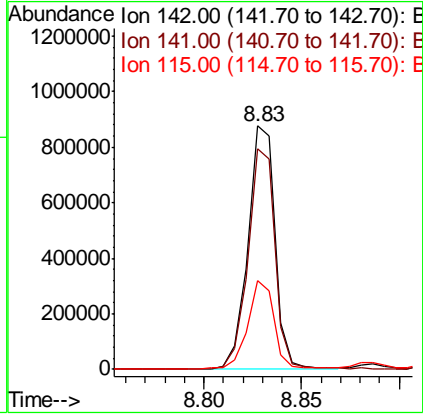
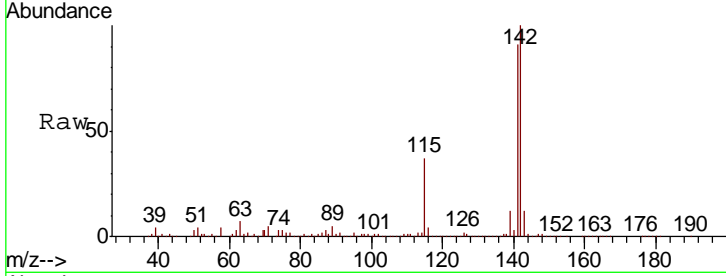
#37  
 2-Methylnaphthalene  
 Concen: 44.677 ng  
 RT: 8.83 min Scan# 1146  
 Delta R.T. -0.01 min  
 Lab File: BF112441.D  
 Acq: 7 Feb 2019 16:39

Instrument :  
 BNA\_F  
 ClientSampled :  
 RBR-200028

Tgt Ion	Resp	Lower	Upper
142	100		
141	90.5	70.9	106.3
115	36.6	24.9	37.3

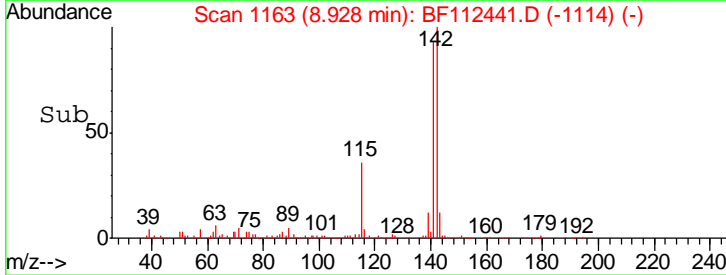
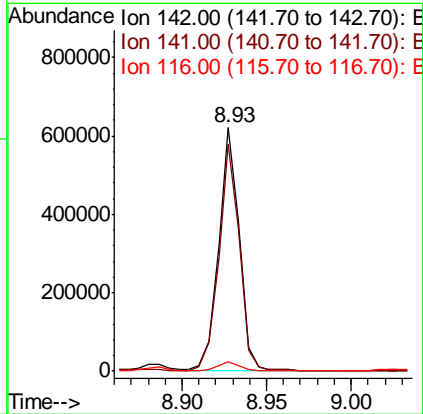
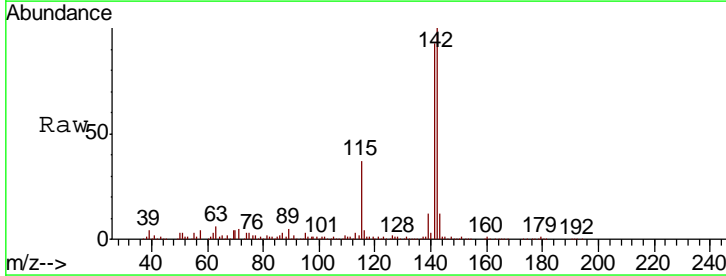
Manual Integrations  
 APPROVED

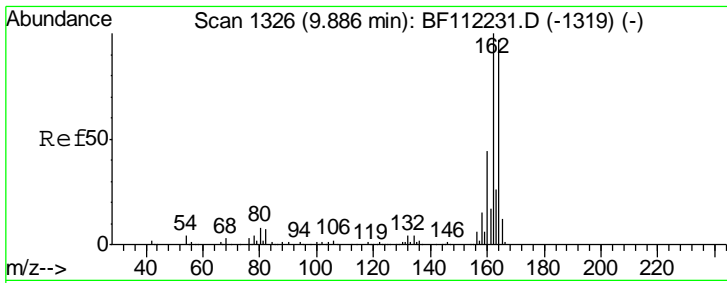
Sohil  
 2/11/2019 4:50:01 PM



#38  
 1-Methylnaphthalene  
 Concen: 29.119 ng  
 RT: 8.93 min Scan# 1163  
 Delta R.T. -0.01 min  
 Lab File: BF112441.D  
 Acq: 7 Feb 2019 16:39

Tgt Ion	Resp	Lower	Upper
142	100		
141	93.4	72.6	108.8
116	4.1	2.8	4.2



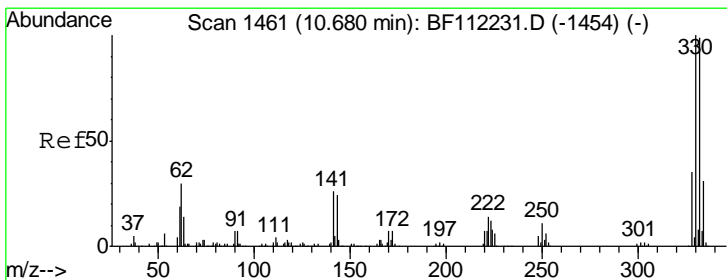
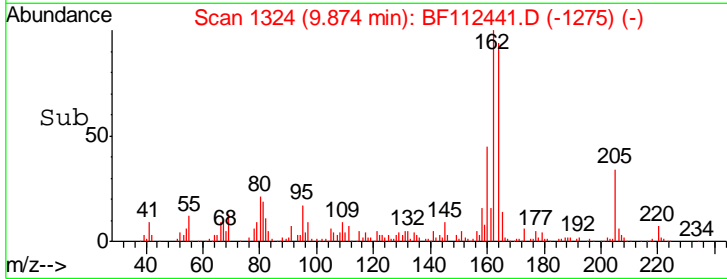
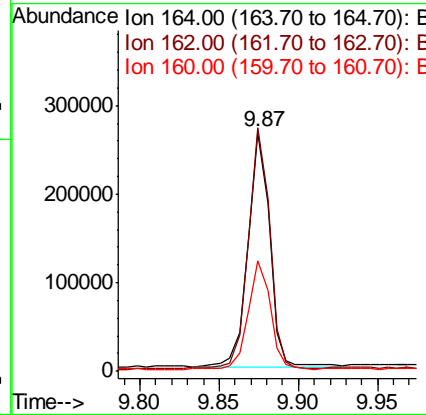
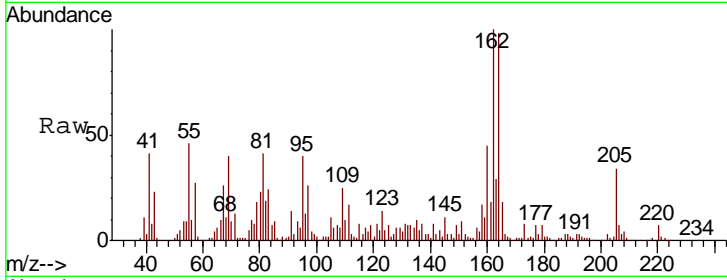


#39  
 Acenaphthene-d10  
 Concen: 20.000 ng  
 RT: 9.87 min Scan# 1324  
 Delta R.T. -0.01 min  
 Lab File: BF112441.D  
 Acq: 7 Feb 2019 16:39

Instrument :  
 BNA\_F  
 ClientSampled :  
 RBR-200028

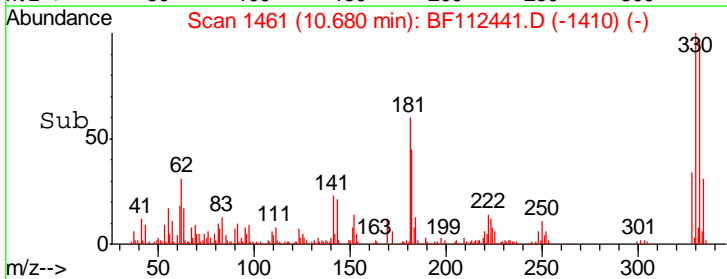
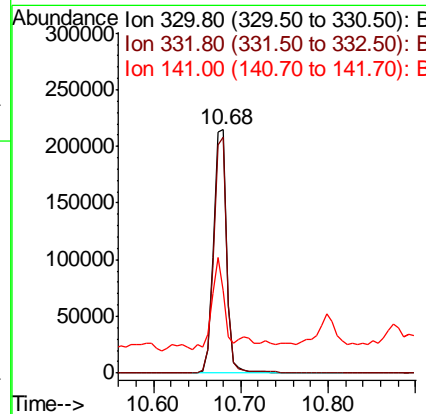
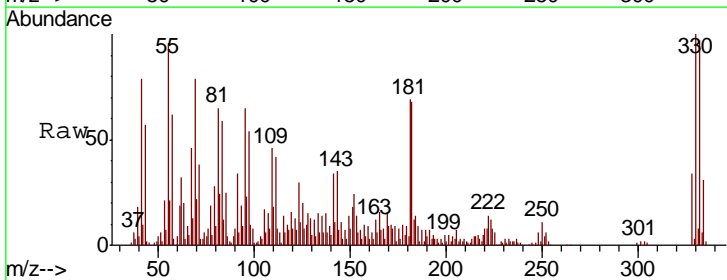
Tgt Ion	Resp	Lower	Upper
164	100		
162	101.9	82.2	123.4
160	46.1	36.2	54.4

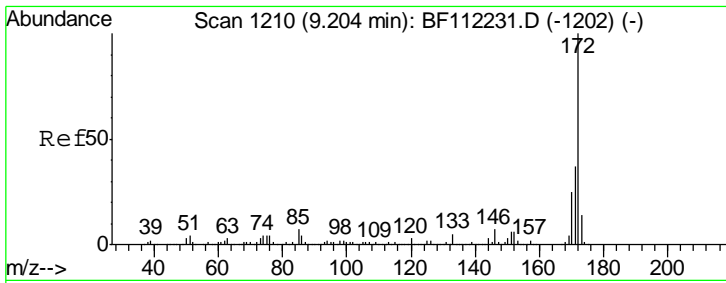
Manual Integrations  
**APPROVED**  
 Sohil  
 2/11/2019 4:50:01 PM



#42  
 2,4,6-Tribromophenol  
 Concen: 77.636 ng  
 RT: 10.68 min Scan# 1461  
 Delta R.T. 0.00 min  
 Lab File: BF112441.D  
 Acq: 7 Feb 2019 16:39

Tgt Ion	Resp	Lower	Upper
330	100		
332	96.4	76.6	114.8
141	33.7	24.3	36.5





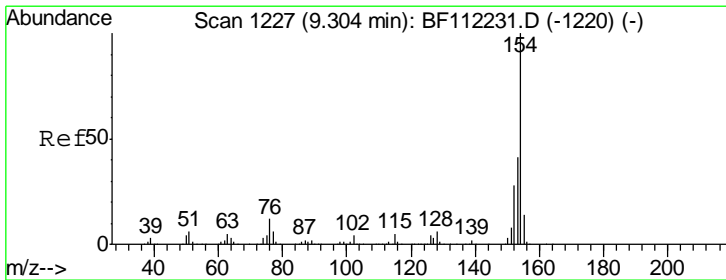
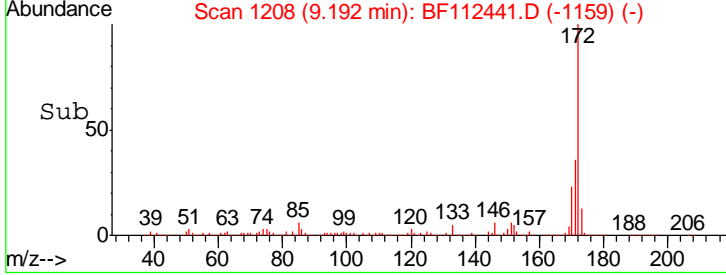
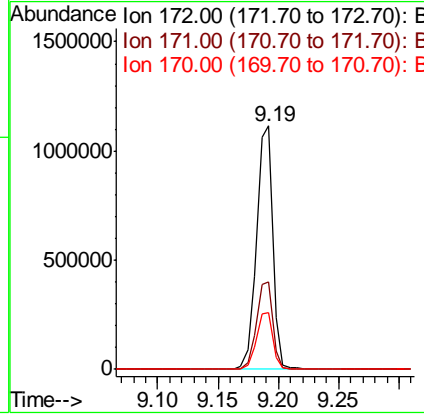
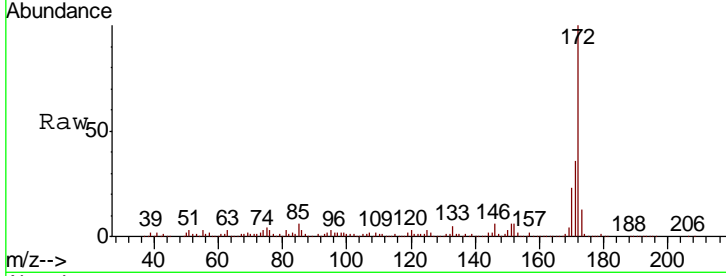
#45  
 2-Fluorobiphenyl  
 Concen: 59.861 ng  
 RT: 9.19 min Scan# 1208  
 Delta R.T. -0.01 min  
 Lab File: BF112441.D  
 Acq: 7 Feb 2019 16:39

Instrument :  
 BNA\_F  
 ClientSampled :  
 RBR-200028

Tgt Ion	Resp	Lower	Upper
172	1059818		
171	35.7	30.5	45.7
170	23.5	20.2	30.4

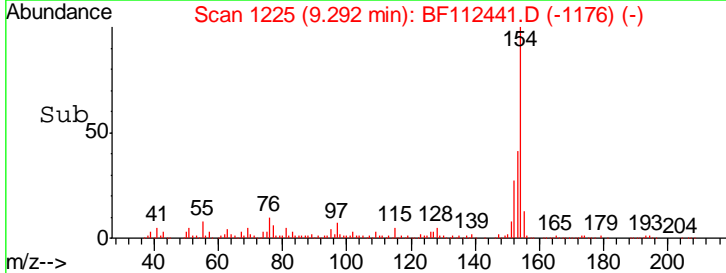
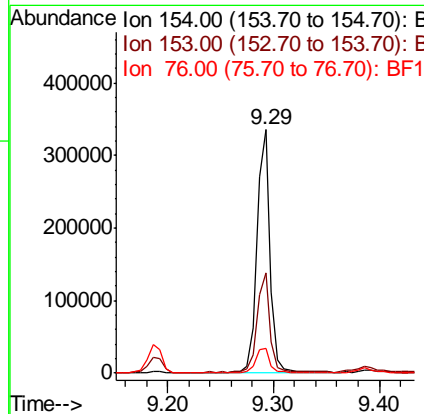
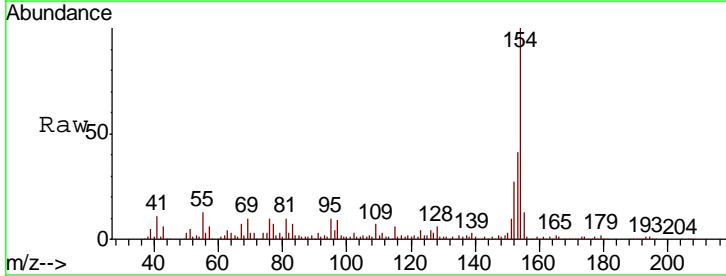
Manual Integrations  
 APPROVED

Sohil  
 2/11/2019 4:50:01 PM

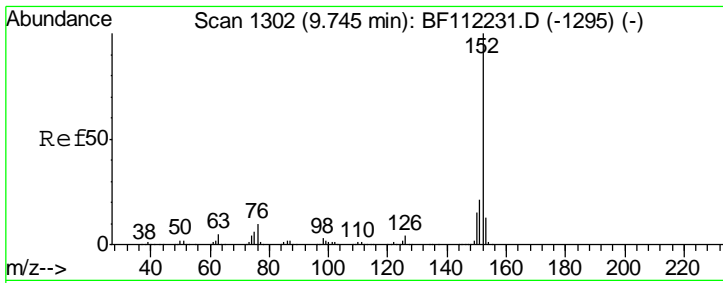


#46  
 1,1'-Biphenyl  
 Concen: 13.374 ng  
 RT: 9.29 min Scan# 1225  
 Delta R.T. -0.01 min  
 Lab File: BF112441.D  
 Acq: 7 Feb 2019 16:39

Tgt Ion	Resp	Lower	Upper
154	292771		
153	41.4	21.5	61.5
76	10.0	0.0	33.1

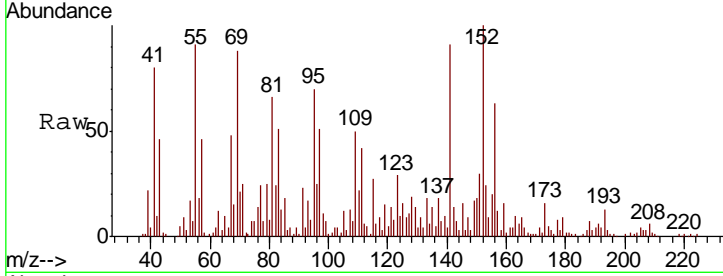






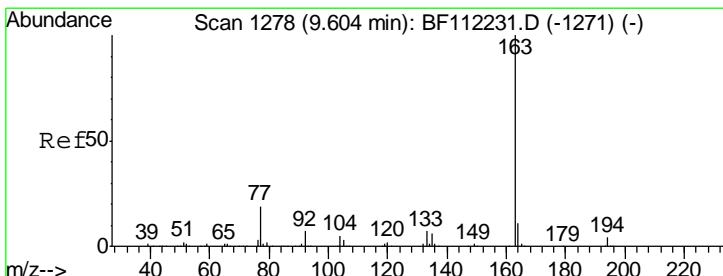
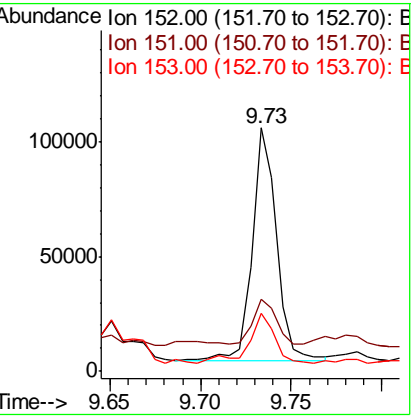
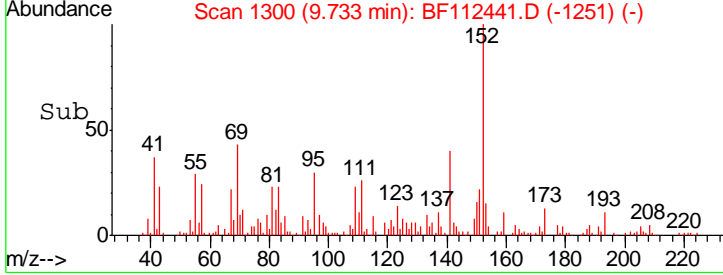
#49  
 Acenaphthylene  
 Concen: 3.783 ng  
 RT: 9.73 min Scan# 1300  
 Delta R.T. -0.01 min  
 Lab File: BF112441.D  
 Acq: 7 Feb 2019 16:39

Instrument :  
 BNA\_F  
 ClientSampled :  
 RBR-200028



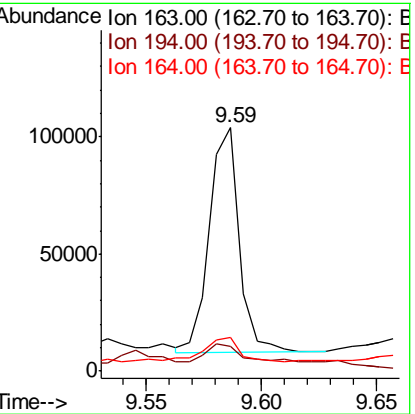
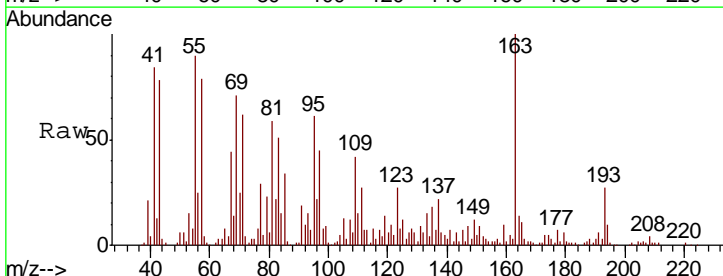
Tgt Ion	Resp	Lower	Upper
152	100		
151	29.8	17.0	25.6#
153	24.0	11.2	16.8#

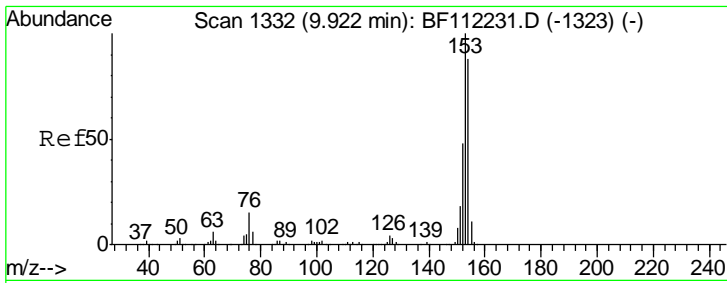
Manual Integrations  
 APPROVED  
 Sohil  
 2/11/2019 4:50:01 PM



#50  
 Dimethylphthalate  
 Concen: 4.449 ng  
 RT: 9.59 min Scan# 1275  
 Delta R.T. -0.02 min  
 Lab File: BF112441.D  
 Acq: 7 Feb 2019 16:39

Tgt Ion	Resp	Lower	Upper
163	100		
194	10.3	3.3	4.9#
164	13.7	8.5	12.7#



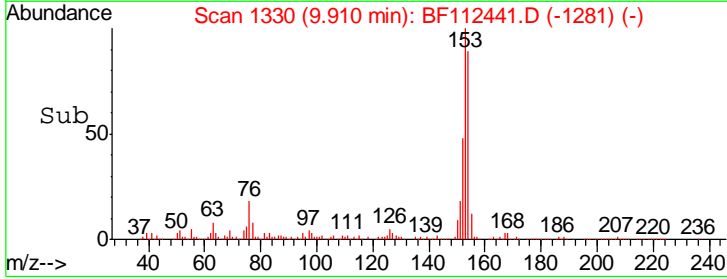
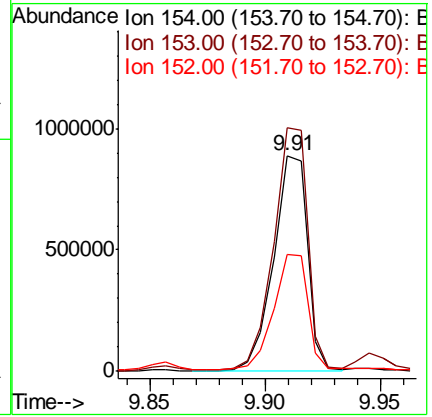
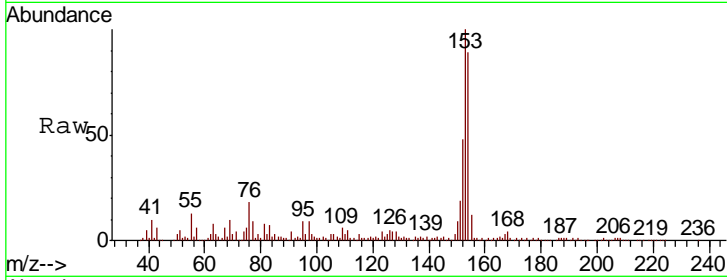


#52  
 Acenaphthene  
 Concen: 60.387 ng  
 RT: 9.91 min Scan# 1330  
 Delta R.T. -0.01 min  
 Lab File: BF112441.D  
 Acq: 7 Feb 2019 16:39

Instrument :  
 BNA\_F  
 ClientSampled :  
 RBR-200028

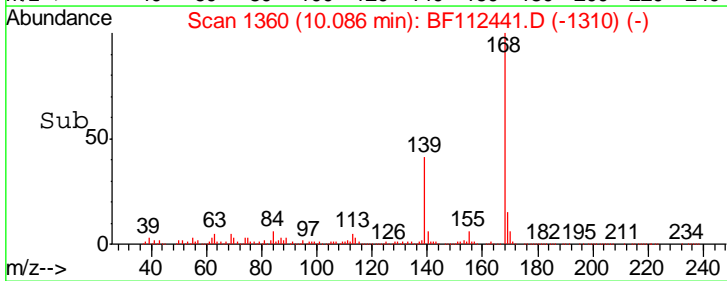
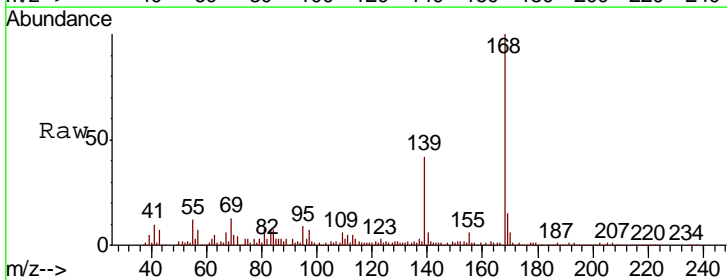
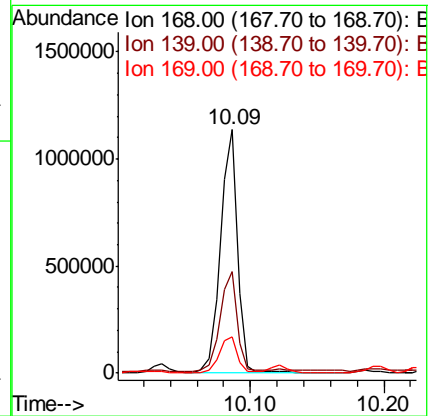
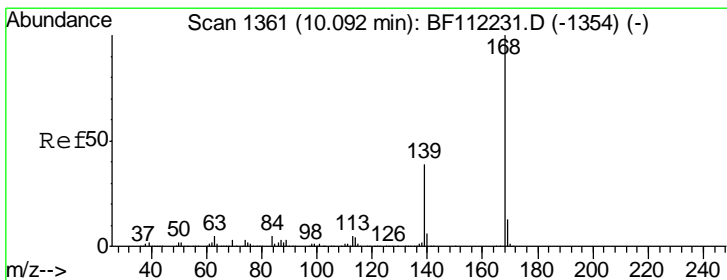
Tgt Ion	Resp	Lower	Upper
154	100		
153	112.8	89.8	134.6
152	54.4	43.5	65.3

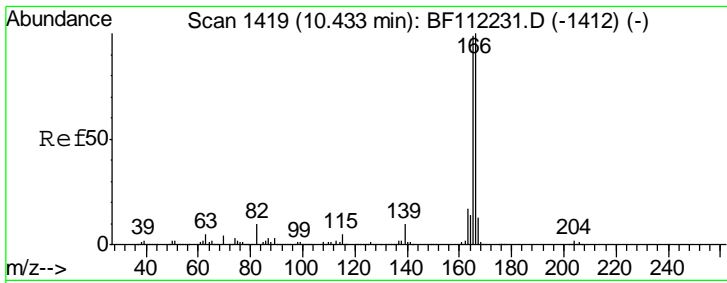
Manual Integrations  
**APPROVED**  
 Sohil  
 2/11/2019 4:50:01 PM



#55  
 Dibenzofuran  
 Concen: 44.951 ng  
 RT: 10.09 min Scan# 1360  
 Delta R.T. -0.01 min  
 Lab File: BF112441.D  
 Acq: 7 Feb 2019 16:39

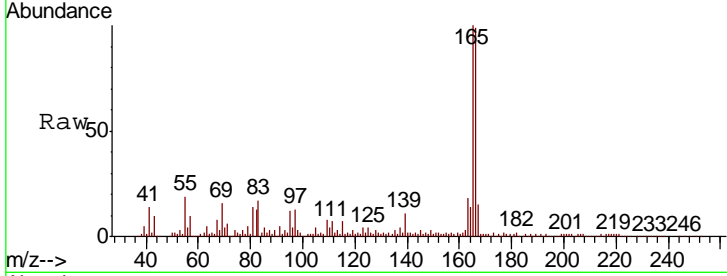
Tgt Ion	Resp	Lower	Upper
168	100		
139	41.5	29.2	43.8
169	14.6	11.4	17.0





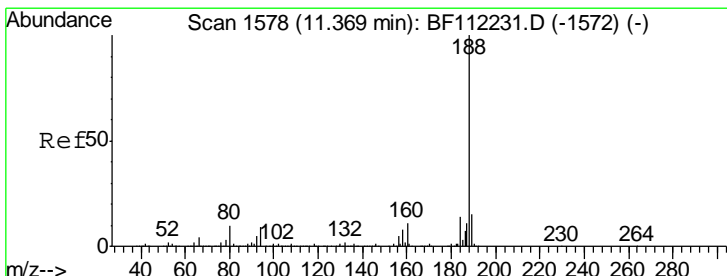
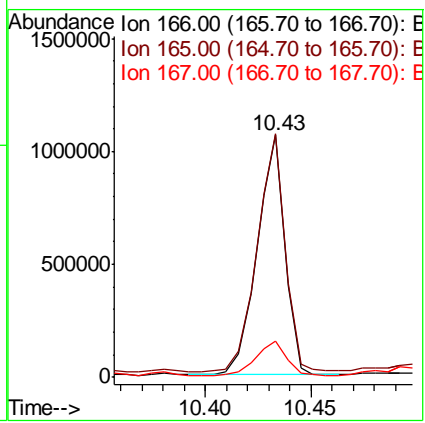
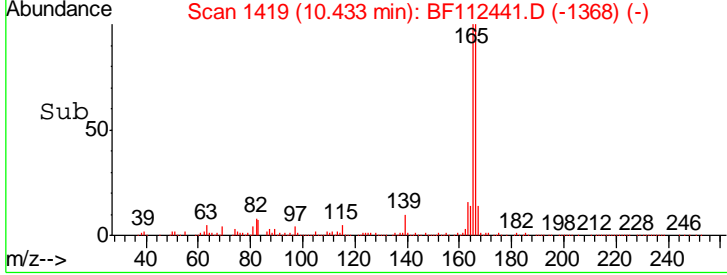
#58  
 Fluorene  
 Concen: 57.376 ng  
 RT: 10.43 min Scan# 1419  
 Delta R.T. 0.00 min  
 Lab File: BF112441.D  
 Acq: 7 Feb 2019 16:39

**Instrument :**  
 BNA\_F  
**ClientSampled :**  
 RBR-200028

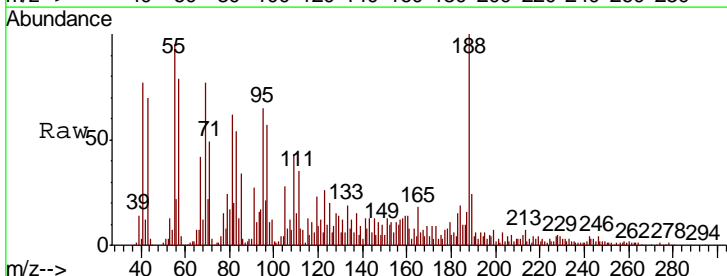


Tgt Ion	Resp	Lower	Upper
166	100		
165	100.6	77.1	115.7
167	15.1	11.3	16.9

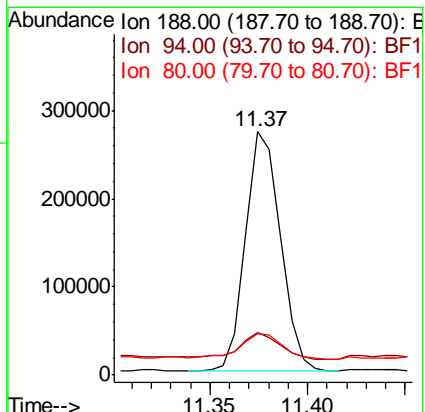
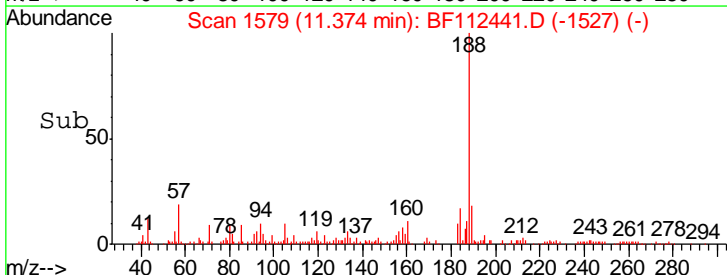
**Manual Integrations**  
**APPROVED**  
 Sohil  
 2/11/2019 4:50:01 PM

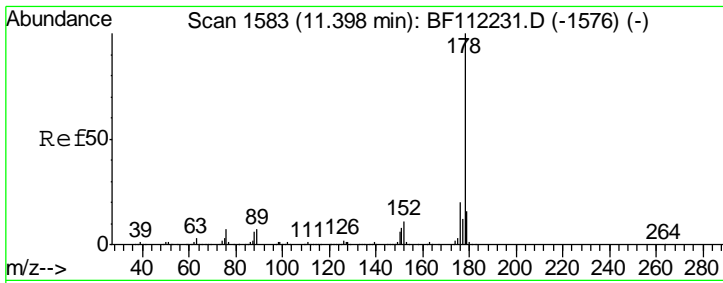


#64  
 Phenanthrene-d10  
 Concen: 20.000 ng  
 RT: 11.37 min Scan# 1579  
 Delta R.T. 0.01 min  
 Lab File: BF112441.D  
 Acq: 7 Feb 2019 16:39



Tgt Ion	Resp	Lower	Upper
188	100		
94	17.3	8.2	12.2#
80	17.1	8.9	13.3#





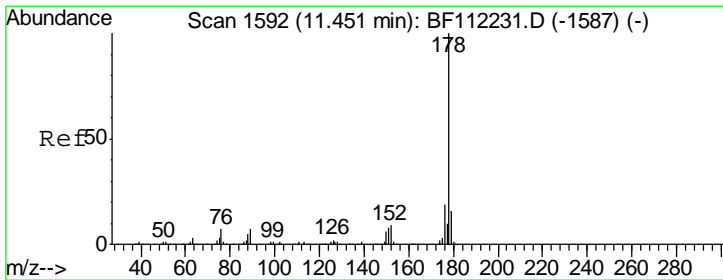
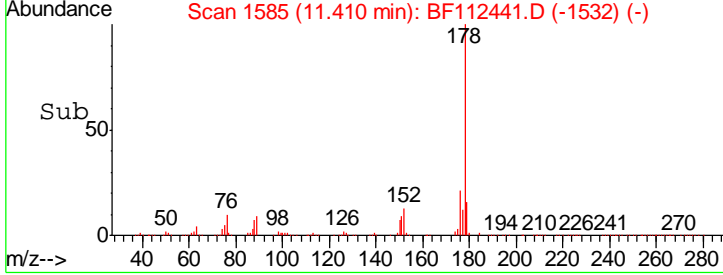
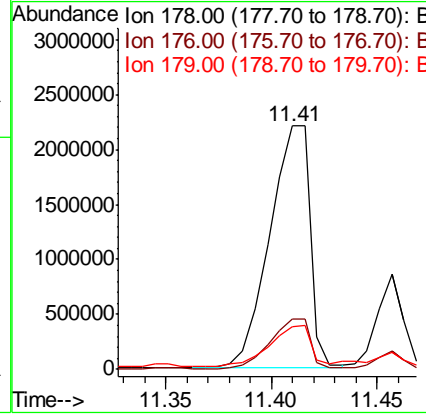
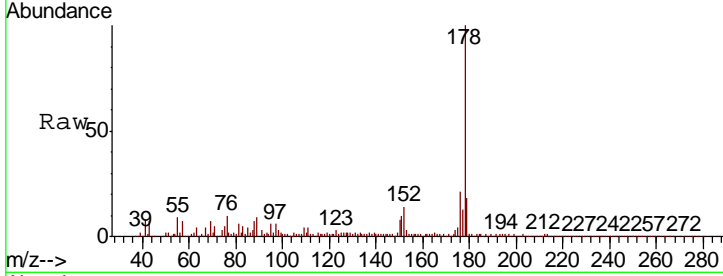
#71  
 Phenanthrene  
 Concen: 168.189 ng  
 RT: 11.41 min Scan# 1585  
 Delta R.T. 0.01 min  
 Lab File: BF112441.D  
 Acq: 7 Feb 2019 16:39

**Instrument :**  
 BNA\_F  
**ClientSampled :**  
 RBR-200028

Tgt Ion	Resp	Lower	Upper
178	100		
176	20.9	16.3	24.5
179	17.6	13.0	19.4

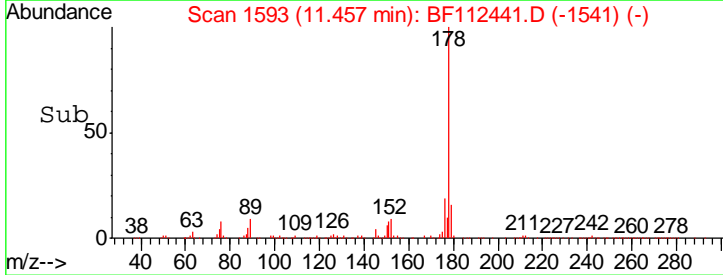
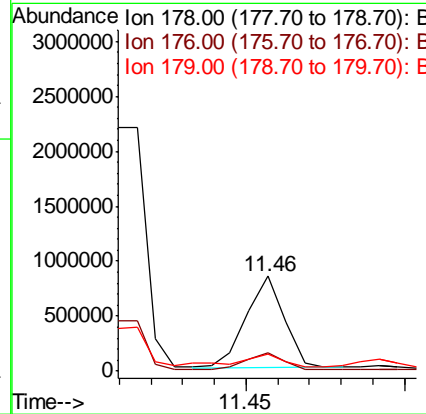
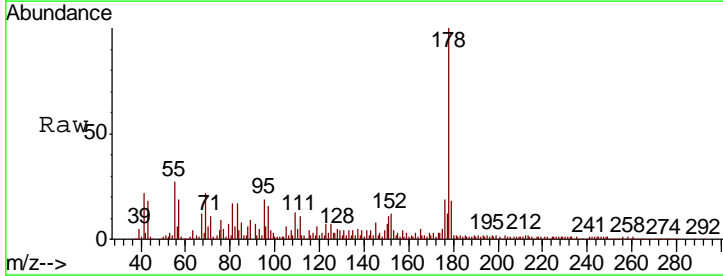
**Manual Integrations**  
**APPROVED**

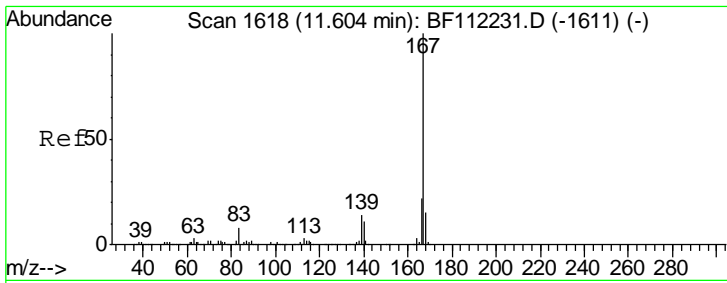
Sohil  
 2/11/2019 4:50:01 PM



#72  
 Anthracene  
 Concen: 40.066 ng  
 RT: 11.46 min Scan# 1593  
 Delta R.T. 0.01 min  
 Lab File: BF112441.D  
 Acq: 7 Feb 2019 16:39

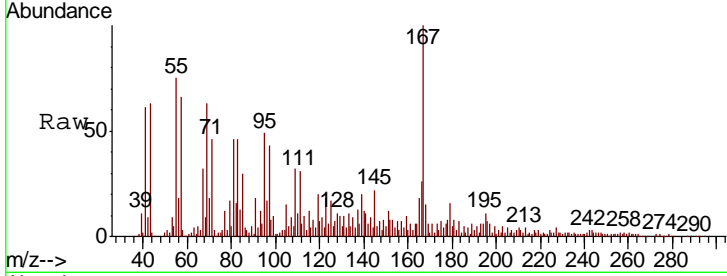
Tgt Ion	Resp	Lower	Upper
178	100		
176	19.4	15.5	23.3
179	17.8	12.8	19.2





#73  
 Carbazole  
 Concen: 20.259 ng  
 RT: 11.61 min Scan# 1619  
 Delta R.T. 0.01 min  
 Lab File: BF112441.D  
 Acq: 7 Feb 2019 16:39

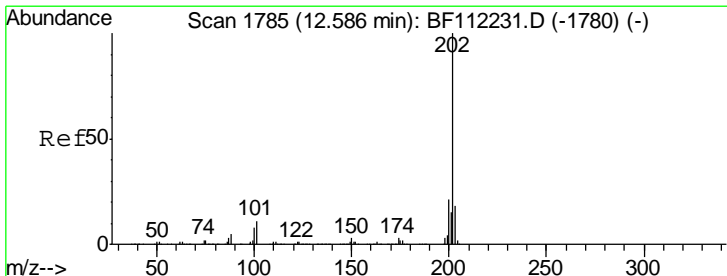
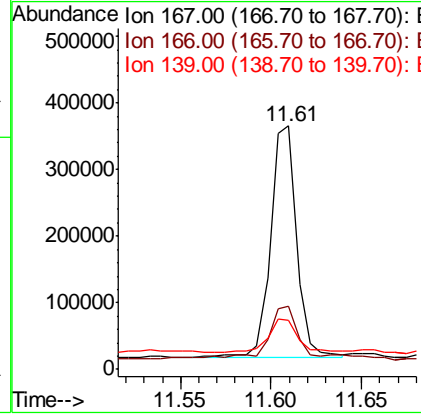
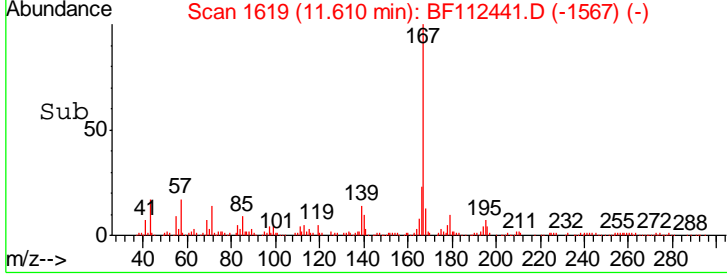
**Instrument :**  
 BNA\_F  
**Client Sampled :**  
 RBR-200028



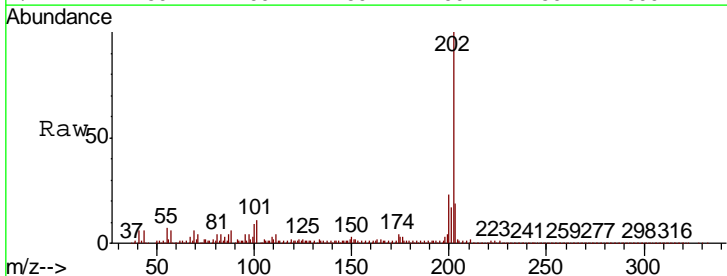
Tgt Ion	Resp	Lower	Upper
167	100		
166	25.9	17.9	26.9
139	20.1	10.2	15.2#

**Manual Integrations**  
**APPROVED**

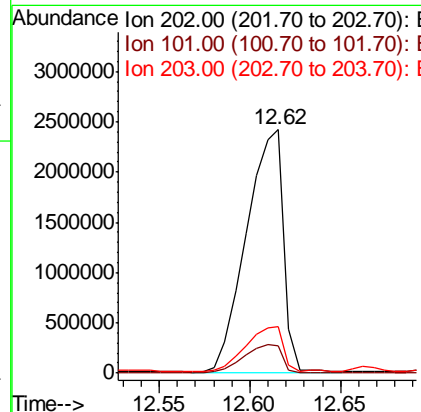
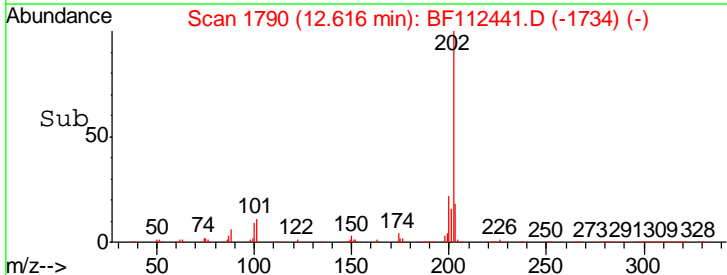
Sohil  
 2/11/2019 4:50:01 PM

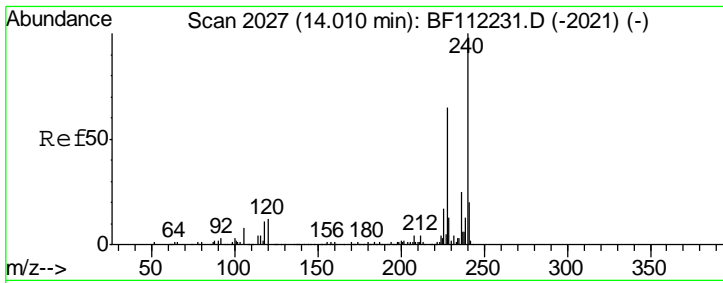


#75  
 Fluoranthene  
 Concen: 182.547 ng  
 RT: 12.62 min Scan# 1790  
 Delta R.T. 0.03 min  
 Lab File: BF112441.D  
 Acq: 7 Feb 2019 16:39



Tgt Ion	Resp	Lower	Upper
202	100		
101	11.4	0.0	31.8
203	19.1	0.0	38.4





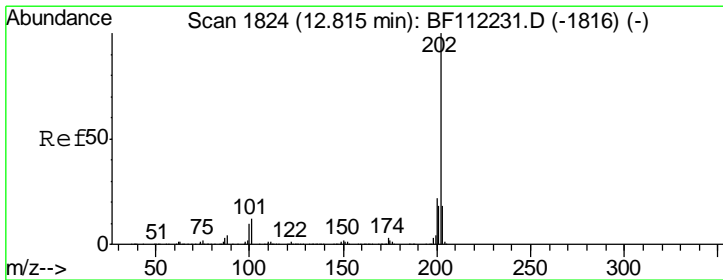
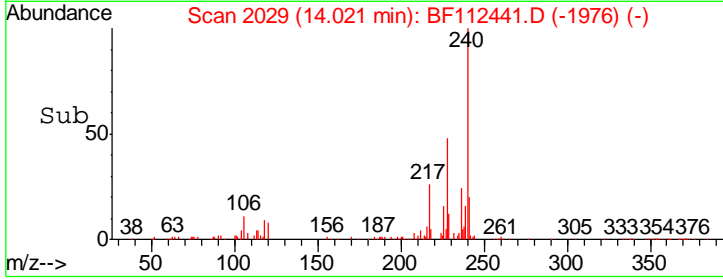
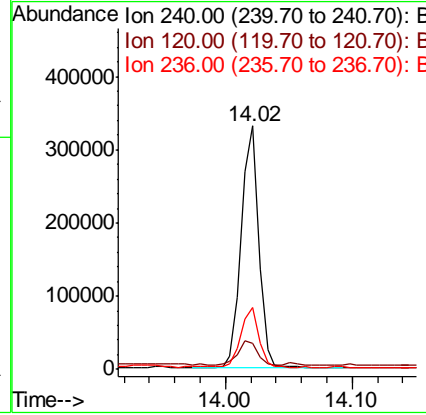
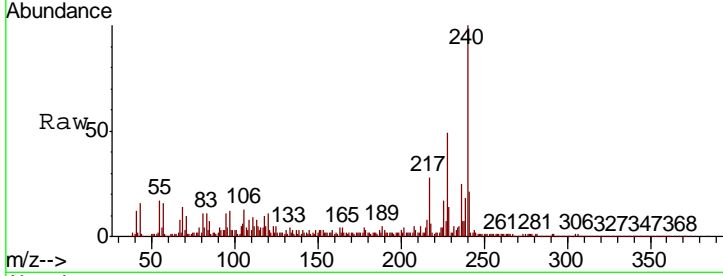
#76  
 Chrysene-d12  
 Concen: 20.000 ng  
 RT: 14.02 min Scan# 2029  
 Delta R.T. 0.01 min  
 Lab File: BF112441.D  
 Acq: 7 Feb 2019 16:39

**Instrument :**  
 BNA\_F  
**ClientSampled :**  
 RBR-200028

Tgt Ion	Ratio	Lower	Upper
240	100		
120	10.9	9.0	13.6
236	25.4	20.7	31.1

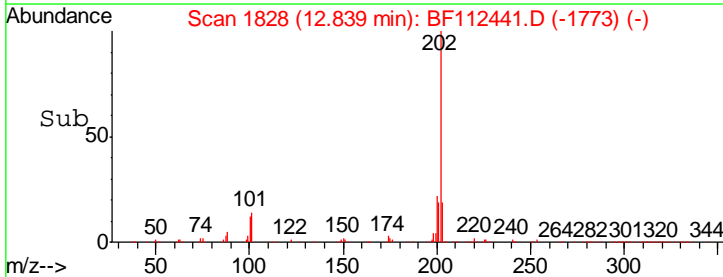
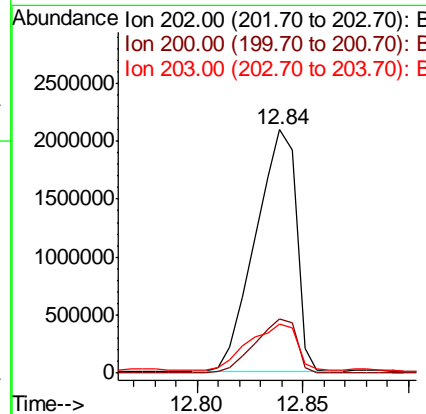
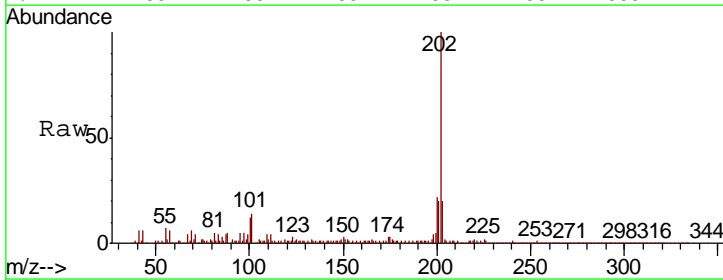
**Manual Integrations**  
**APPROVED**

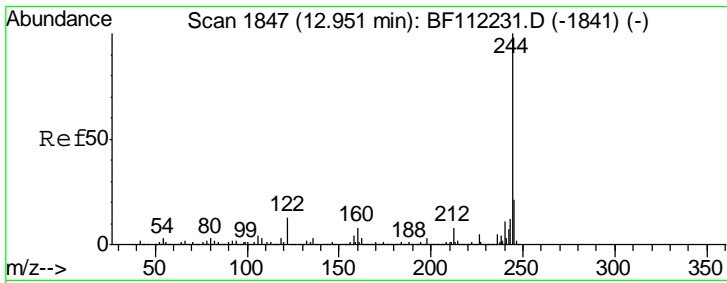
Sohil  
 2/11/2019 4:50:01 PM



#78  
 Pyrene  
 Concen: 130.097 ng  
 RT: 12.84 min Scan# 1828  
 Delta R.T. 0.02 min  
 Lab File: BF112441.D  
 Acq: 7 Feb 2019 16:39

Tgt Ion	Ratio	Lower	Upper
202	100		
200	22.3	17.7	26.5
203	20.0	14.6	22.0





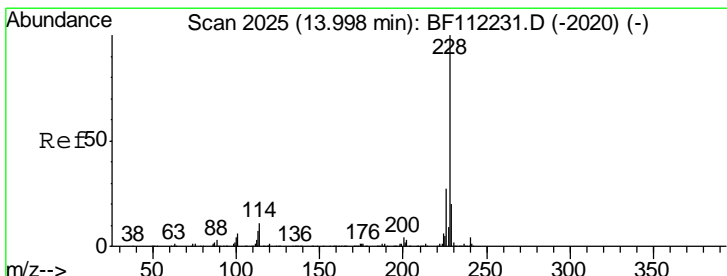
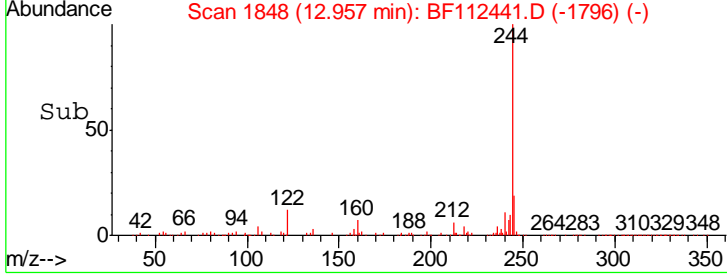
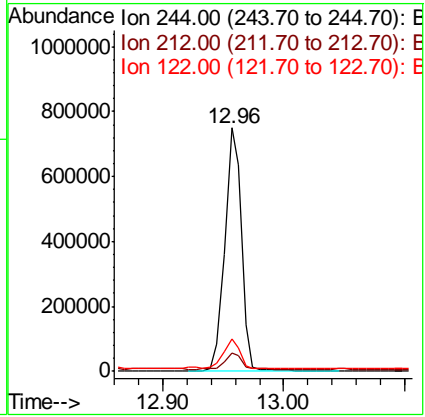
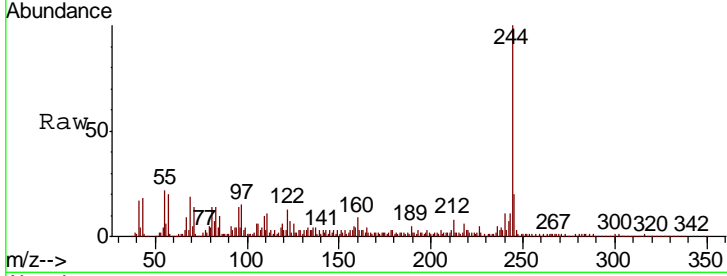
#79  
 Terphenyl-d14  
 Concen: 42.339 ng  
 RT: 12.96 min Scan# 1848  
 Delta R.T. 0.01 min  
 Lab File: BF112441.D  
 Acq: 7 Feb 2019 16:39

**Instrument :**  
 BNA\_F  
**ClientSampled :**  
 RBR-200028

Tgt Ion	Resp	Lower	Upper
244	100		
212	7.6	5.9	8.9
122	13.2	9.8	14.6

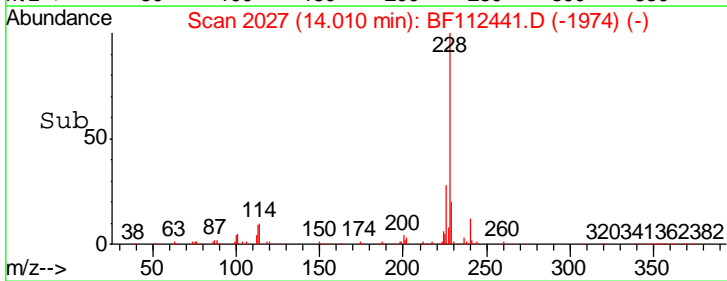
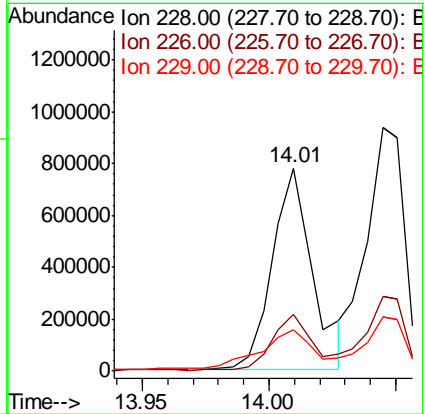
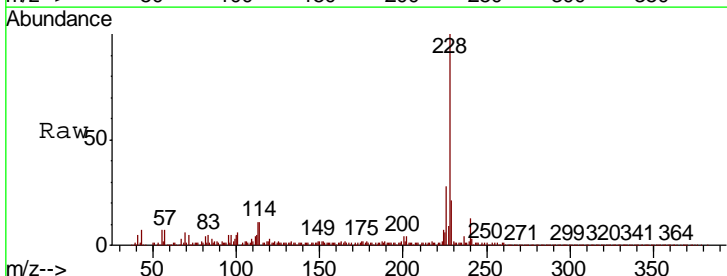
**Manual Integrations**  
**APPROVED**

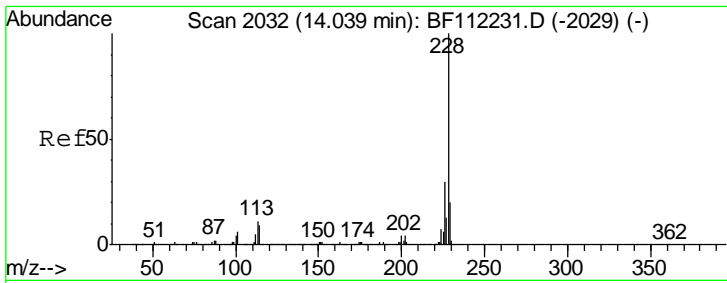
Sohil  
 2/11/2019 4:50:01 PM



#81  
 Benzo(a)anthracene  
 Concen: 47.010 ng  
 RT: 14.01 min Scan# 2027  
 Delta R.T. 0.01 min  
 Lab File: BF112441.D  
 Acq: 7 Feb 2019 16:39

Tgt Ion	Resp	Lower	Upper
228	100		
226	28.0	22.6	34.0
229	20.5	16.5	24.7



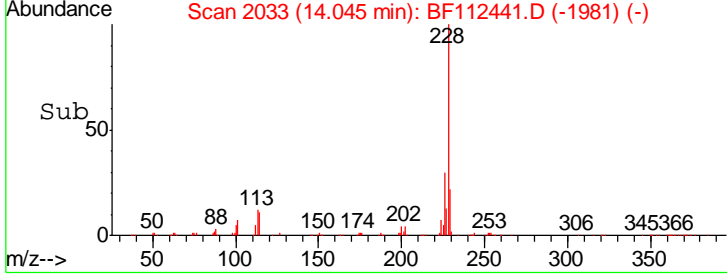
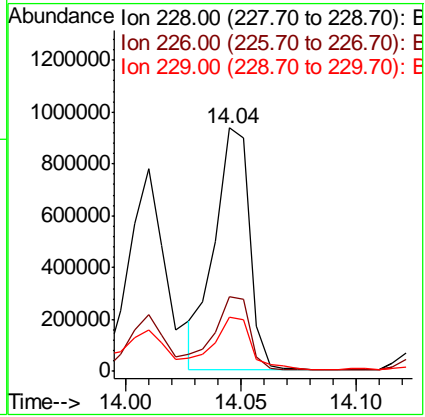
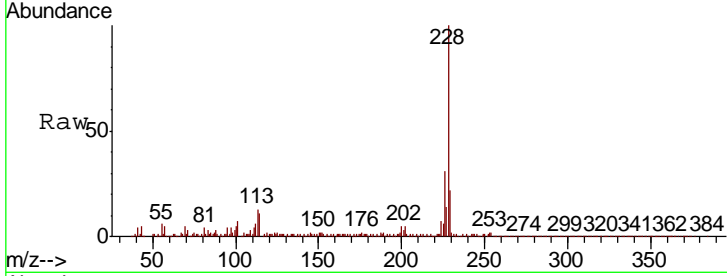


#83  
 Chrysene  
 Concen: 56.069 ng  
 RT: 14.04 min Scan# 2033  
 Delta R.T. 0.01 min  
 Lab File: BF112441.D  
 Acq: 7 Feb 2019 16:39

**Instrument :**  
 BNA\_F  
**Client Sampled :**  
 RBR-200028

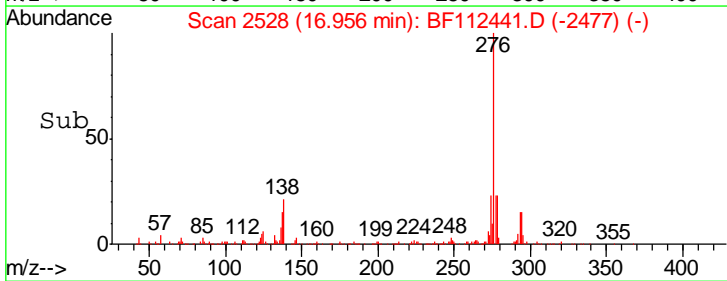
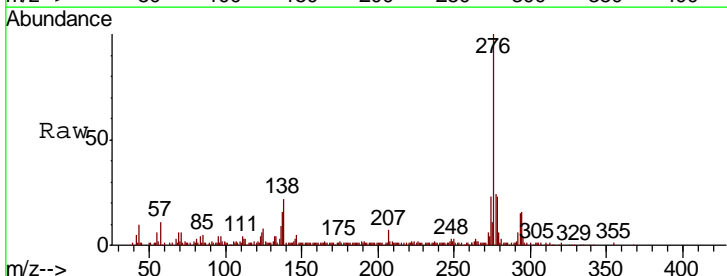
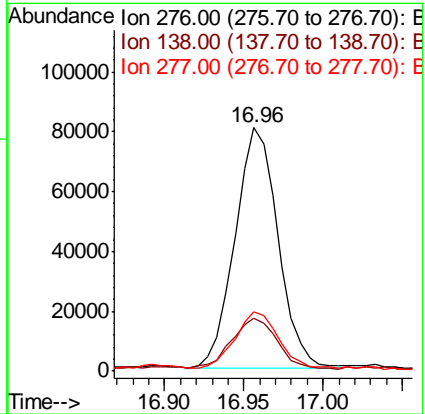
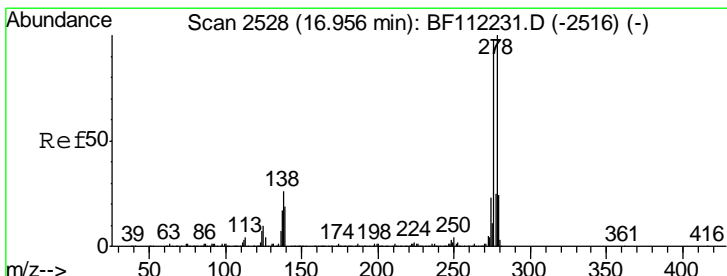
Tgt Ion	Resp	Lower	Upper
228	100		
226	30.8	25.0	37.6
229	22.5	16.6	24.8

**Manual Integrations**  
**APPROVED**  
 Sohil  
 2/11/2019 4:50:01 PM

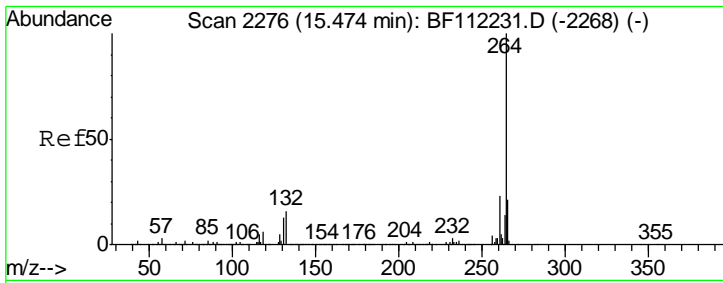


#86  
 Indeno(1,2,3-cd)pyrene  
 Concen: 10.916 ng  
 RT: 16.96 min Scan# 2528  
 Delta R.T. 0.00 min  
 Lab File: BF112441.D  
 Acq: 7 Feb 2019 16:39

Tgt Ion	Resp	Lower	Upper
276	100		
138	22.3	22.6	34.0#
277	23.2	20.3	30.5

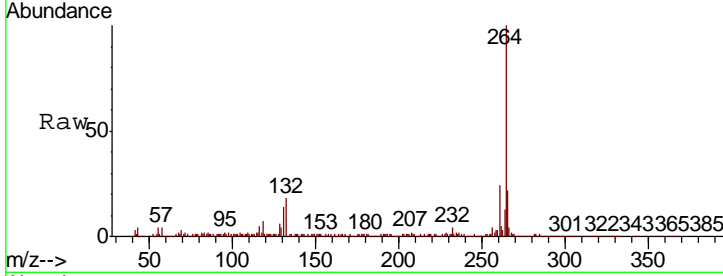






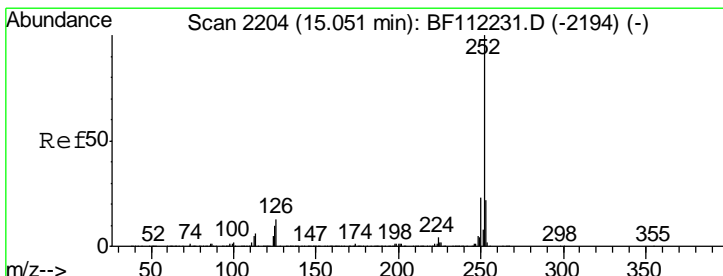
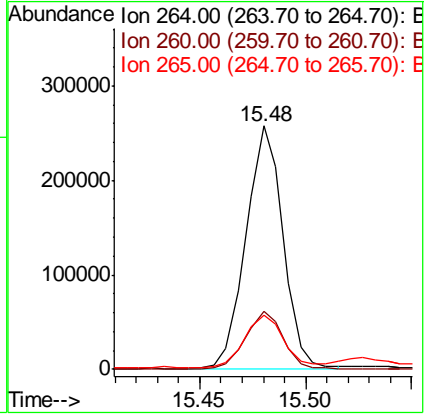
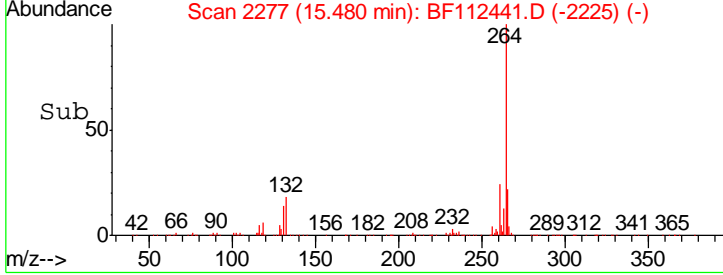
#87  
 Perylene-d12  
 Concen: 20.000 ng  
 RT: 15.48 min Scan# 2277  
 Delta R.T. 0.01 min  
 Lab File: BF112441.D  
 Acq: 7 Feb 2019 16:39

**Instrument :**  
 BNA\_F  
**Client Sampled :**  
 RBR-200028

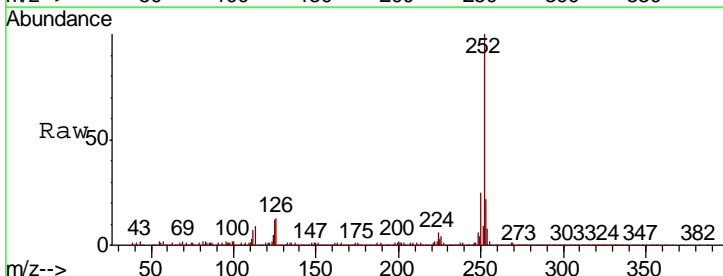


Tgt Ion	Resp	Lower	Upper
264	100		
260	23.9	18.2	27.2
265	22.5	17.0	25.4

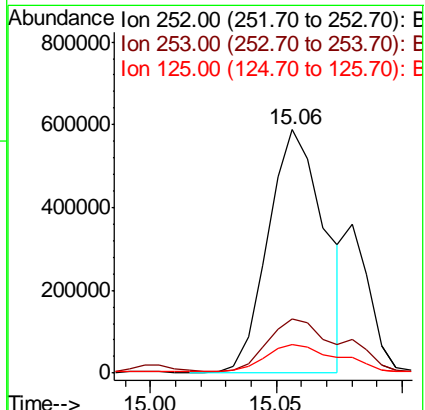
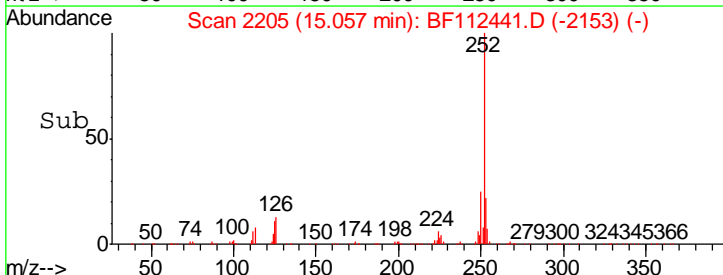
**Manual Integrations**  
**APPROVED**  
 Sohil  
 2/11/2019 4:50:01 PM

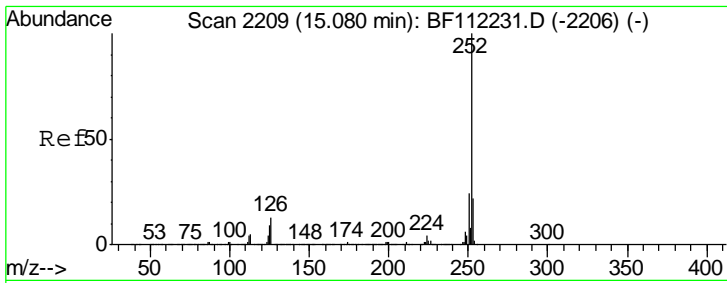


#88  
 Benzo(b)fluoranthene  
 Concen: 49.081 ng m  
 RT: 15.06 min Scan# 2205  
 Delta R.T. 0.01 min  
 Lab File: BF112441.D  
 Acq: 7 Feb 2019 16:39



Tgt Ion	Resp	Lower	Upper
252	100		
253	22.3	18.0	27.0
125	11.8	8.7	13.1





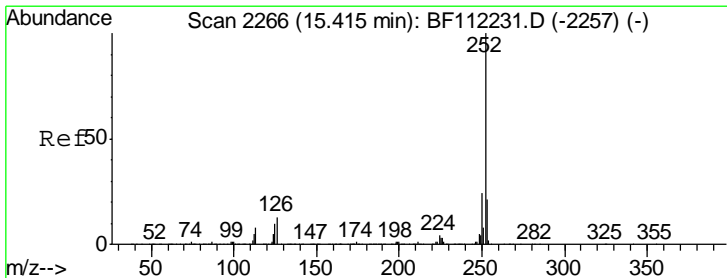
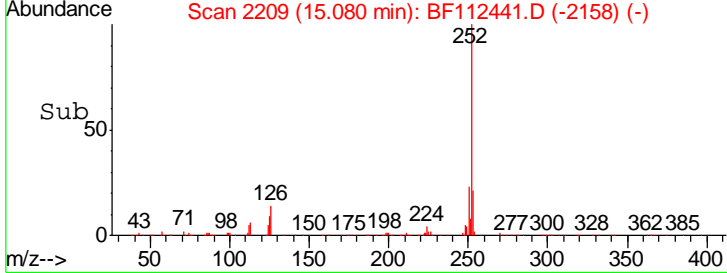
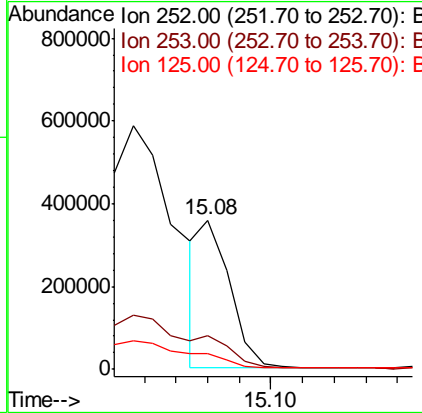
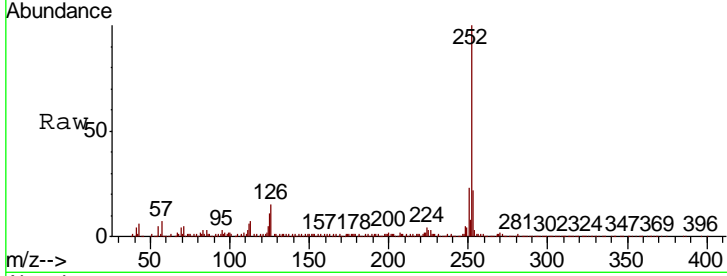
#89  
 Benzo(k)fluoranthene  
 Concen: 13.346 ng m  
 RT: 15.08 min Scan# 2209  
 Delta R.T. 0.00 min  
 Lab File: BF112441.D  
 Acq: 7 Feb 2019 16:39

Instrument : BNA\_F  
 Client Sampled : RBR-200028

Tgt Ion	Resp	Lower	Upper
252	100		
253	22.5	18.0	27.0
125	10.7	9.1	13.7

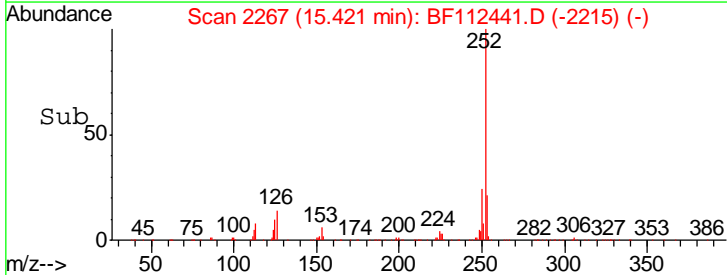
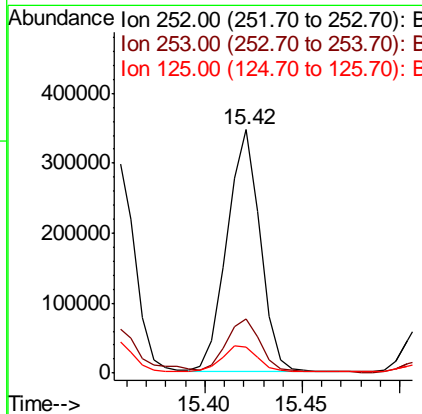
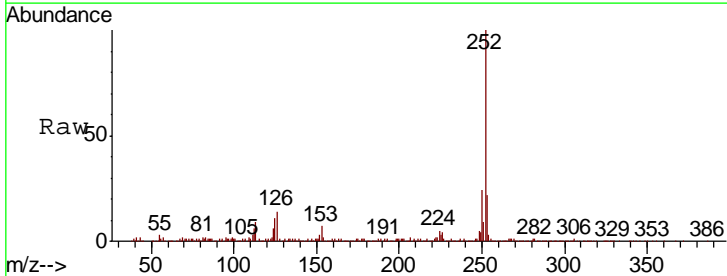
Manual Integrations  
 APPROVED

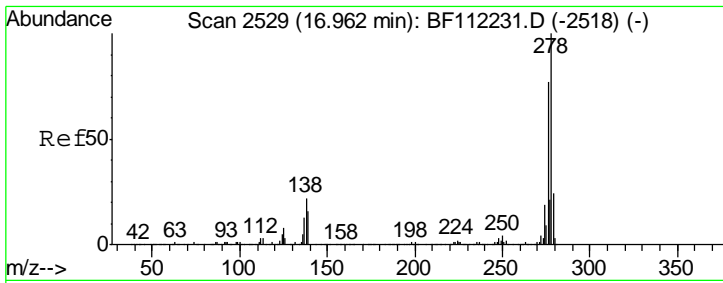
Sohil  
 2/11/2019 4:50:01 PM



#90  
 Benzo(a)pyrene  
 Concen: 24.422 ng  
 RT: 15.42 min Scan# 2267  
 Delta R.T. 0.01 min  
 Lab File: BF112441.D  
 Acq: 7 Feb 2019 16:39

Tgt Ion	Resp	Lower	Upper
252	100		
253	22.4	17.5	26.3
125	10.9	9.0	13.4





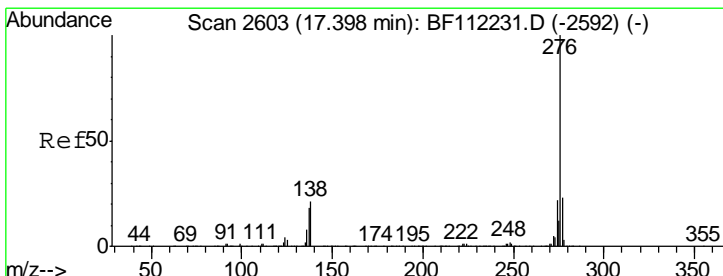
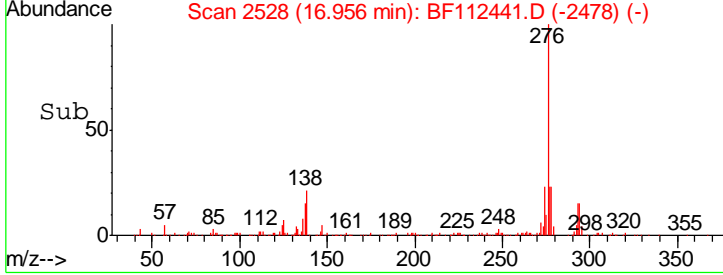
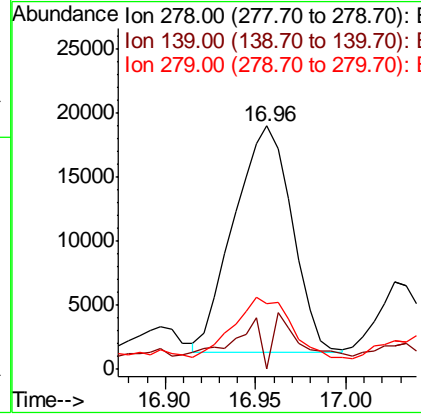
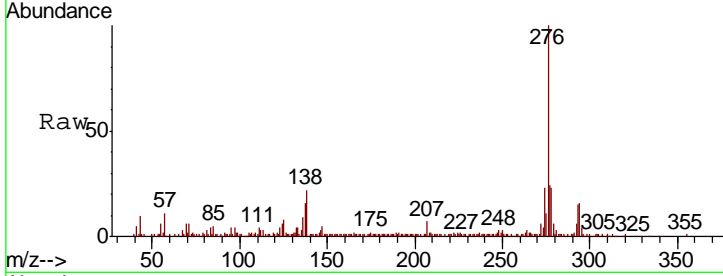
#91  
 Dibenzo(a,h)anthracene  
 Concen: 2.910 ng m  
 RT: 16.96 min Scan# 2528  
 Delta R.T. -0.01 min  
 Lab File: BF112441.D  
 Acq: 7 Feb 2019 16:39

Instrument :  
 BNA\_F  
 ClientSampled :  
 RBR-200028

Tgt Ion	Resp	Lower	Upper
278	39346		
139	0.0	13.7	20.5#
279	27.1	19.0	28.6

Manual Integrations  
 APPROVED

Sohil  
 2/11/2019 4:50:01 PM



#92  
 Benzo(g,h,i)perylene  
 Concen: 9.686 ng  
 RT: 17.40 min Scan# 2604  
 Delta R.T. 0.01 min  
 Lab File: BF112441.D  
 Acq: 7 Feb 2019 16:39

Tgt Ion	Resp	Lower	Upper
276	123559		
277	24.4	19.4	29.0
138	22.3	19.1	28.7

