

Data Path : Z:\SVOASRV\HPCHEM1\BNA F\DATA\BF022819\
 Data File : BF112775.D
 Acq On : 28 Feb 2019 21:44
 Operator : JU/SJ
 Sample : K1645-03
 Misc :
 ALS Vial : 11 Sample Multiplier: 1

Instrument :
 BNA_F
 ClientSampled :
 SR-10

Manual Integrations
 APPROVED

Sohil
 3/1/2019 3:00:18 PM

Quant Time: Mar 01 07:07:39 2019
 Quant Method : Z:\SVOASRV\HPCHEM1\BNA F\METHODS\8270-BF022719.M
 Quant Title : ASP BNA STANDARDS FOR 5 POINT CALIBRATION
 QLast Update : Wed Feb 27 16:08:50 2019
 Response via : Initial Calibration

Internal Standards	R.T.	QIon	Response	Conc	Units	Dev(Min)	
1) 1,4-Dichlorobenzene-d4	6.75	152	185413	20.00	ng	0.00	
21) Naphthalene-d8	8.02	136	679049	20.00	ng	0.00	
39) Acenaphthene-d10	9.77	164	278039	20.00	ng	0.00	
64) Phenanthrene-d10	11.25	188	437748	20.00	ng	0.00	
76) Chrysene-d12	13.87	240	413023	20.00	ng	0.00	
87) Perylene-d12	15.29	264	452021	20.00	ng	0.01	
System Monitoring Compounds							
5) 2-Fluorophenol	5.36	112	1039334	87.20	ng	0.01	
7) Phenol-d6	6.37	99	1296811	86.61	ng	0.00	
23) Nitrobenzene-d5	7.30	82	793170	69.89	ng	0.00	
42) 2,4,6-Tribromophenol	10.56	330	265973	90.11	ng	0.00	
45) 2-Fluorobiphenyl	9.10	172	1221524	73.63	ng	0.00	
79) Terphenyl-d14	12.83	244	930921	43.69	ng	0.00	
Target Compounds							
50) Dimethylphthalate	9.49	163	76393	3.726	ng		97
71) Phenanthrene	11.27	178	68023	3.123	ng		98
75) Fluoranthene	12.45	202	135484	5.806	ng		99
78) Pyrene	12.68	202	131592	3.779	ng		96
81) Benzo(a)anthracene	13.86	228	75812	2.648	ng		100
83) Chrysene	13.90	228	76050	2.712	ng		96
86) Indeno(1,2,3-cd)pyrene	16.63	276	61702m	2.581	ng		
88) Benzo(b)fluoranthene	14.88	252	118804m	4.063	ng		
90) Benzo(a)pyrene	15.22	252	81838	3.164	ng		99
92) Benzo(a,h,i)perylene	17.04	276	63398	2.861	ng		99

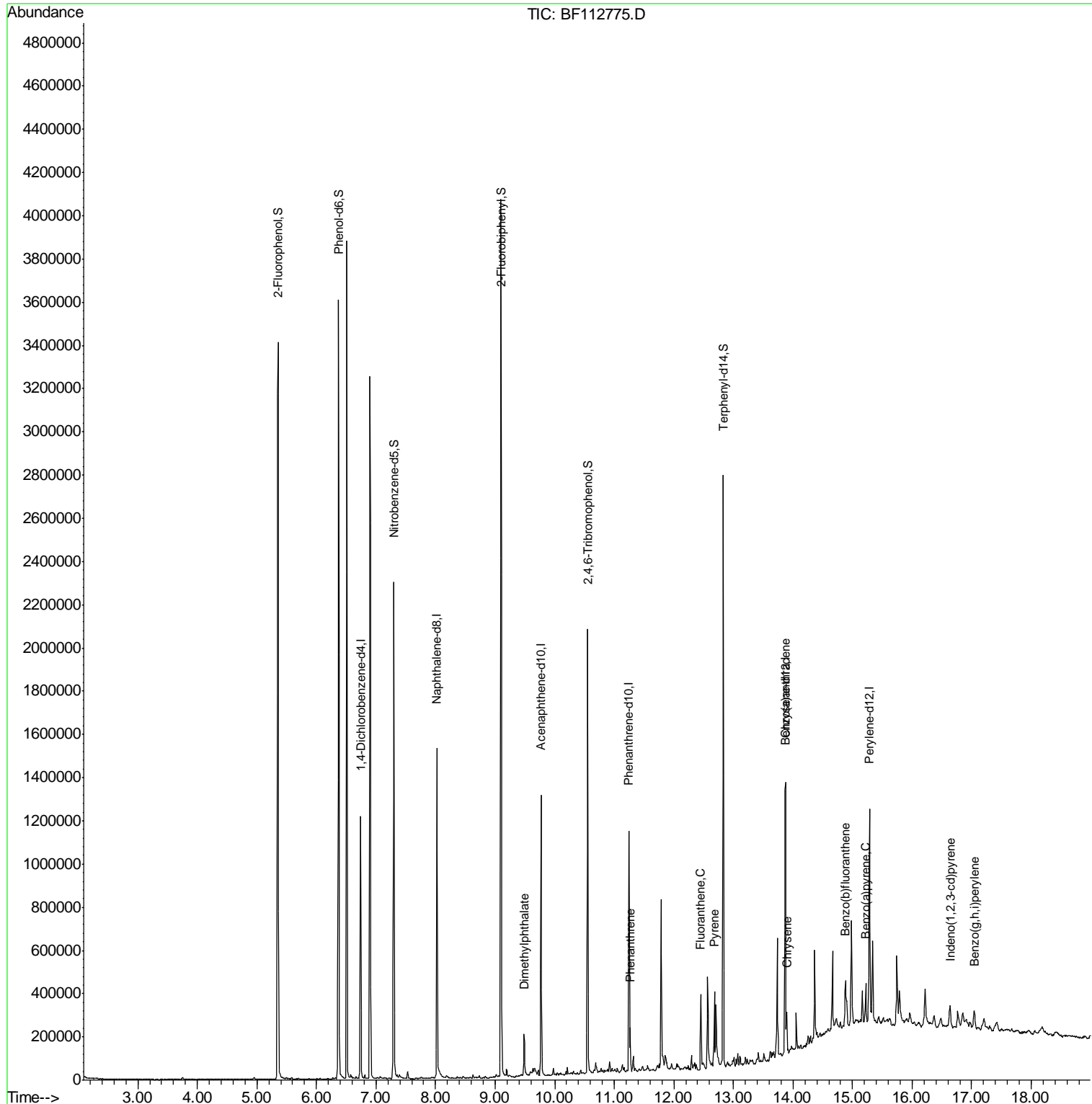
(#) = qualifier out of range (m) = manual integration (+) = signals summed

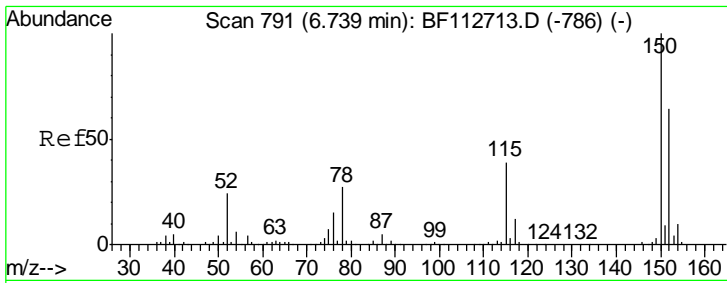
Data Path : Z:\SVOASRV\HPCHEM1\BNA F\DATA\BF022819\
 Data File : BF112775.D
 Acq On : 28 Feb 2019 21:44
 Operator : JU/SJ
 Sample : K1645-03
 Misc :
 ALS Vial : 11 Sample Multiplier: 1

Instrument :
 BNA_F
 Client Sampled :
 SR-10

Manual Integrations
 APPROVED
 Sohil
 3/1/2019 3:00:18 PM

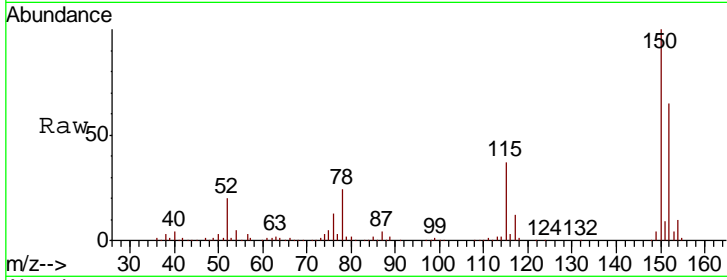
Quant Time: Mar 01 07:07:39 2019
 Quant Method : Z:\SVOASRV\HPCHEM1\BNA F\METHODS\8270-BF022719.M
 Quant Title : ASP BNA STANDARDS FOR 5 POINT CALIBRATION
 QLast Update : Wed Feb 27 16:08:50 2019
 Response via : Initial Calibration





#1
 1,4-Dichlorobenzene-d4
 Concen: 20.000 ng
 RT: 6.75 min Scan# 792
 Delta R.T. 0.01 min
 Lab File: BF112775.D
 Acq: 28 Feb 2019 21:44

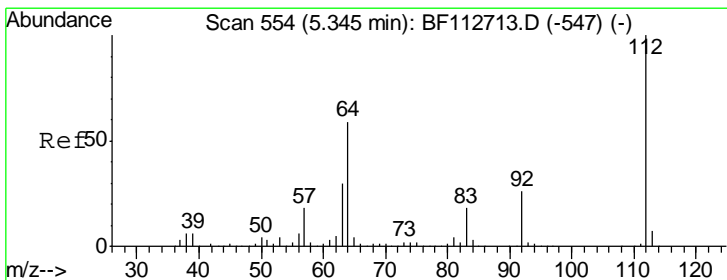
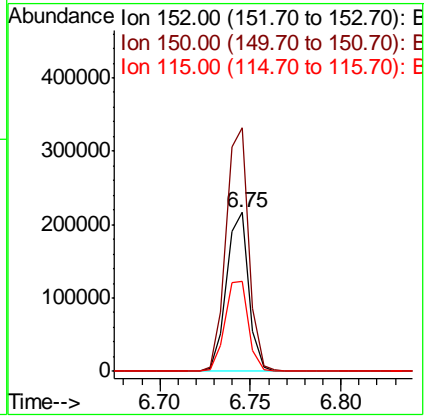
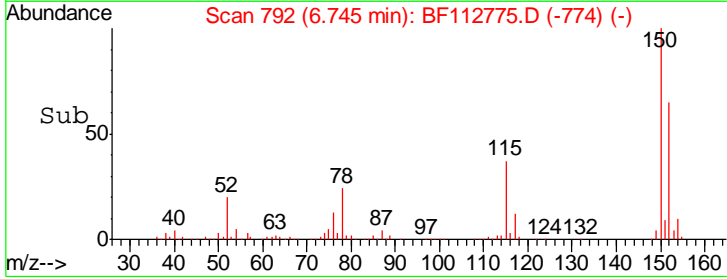
Instrument :
 BNA_F
ClientSampled :
 SR-10



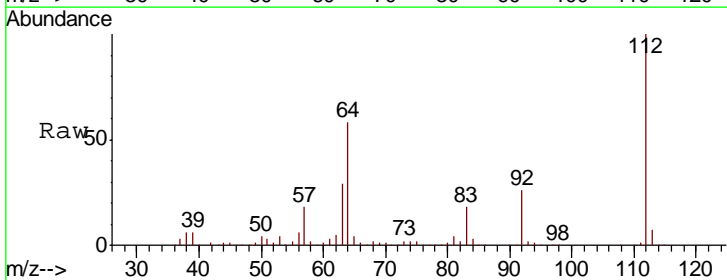
Tgt Ion: 152 Resp: 185413

Ion	Ratio	Lower	Upper
152	100		
150	153.1	124.2	186.2
115	56.7	48.2	72.4

Manual Integrations
APPROVED
 Sohil
 3/1/2019 3:00:18 PM

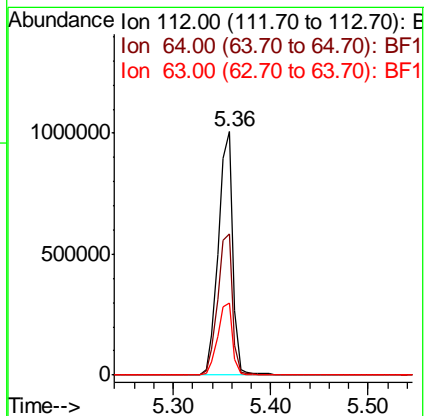
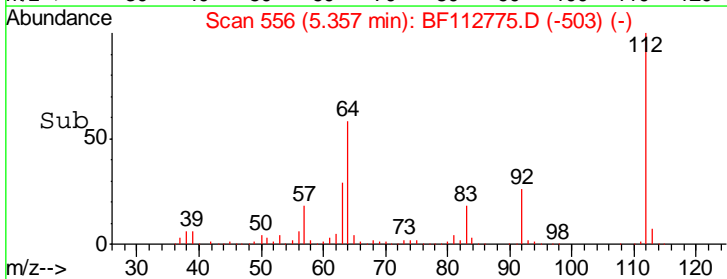


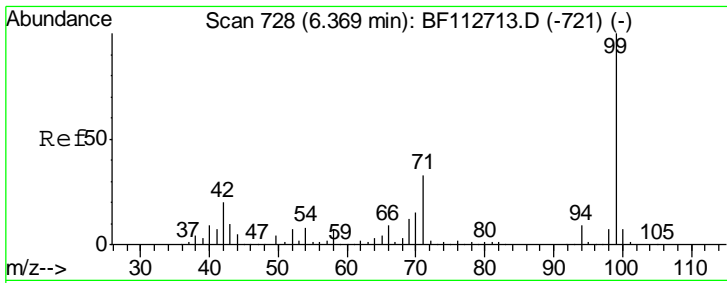
#5
 2-Fluorophenol
 Concen: 87.196 ng
 RT: 5.36 min Scan# 556
 Delta R.T. 0.01 min
 Lab File: BF112775.D
 Acq: 28 Feb 2019 21:44



Tgt Ion: 112 Resp: 1039334

Ion	Ratio	Lower	Upper
112	100		
64	58.1	47.6	71.4
63	29.4	24.4	36.6





#7
 Phenol-d6
 Concen: 86.611 ng
 RT: 6.37 min Scan# 729
 Delta R.T. 0.01 min
 Lab File: BF112775.D
 Acq: 28 Feb 2019 21:44

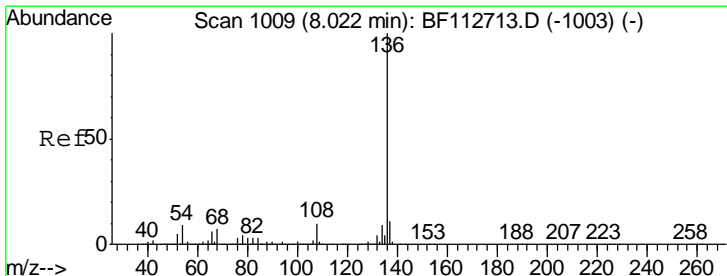
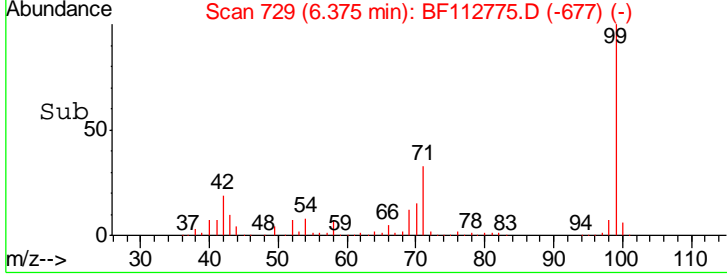
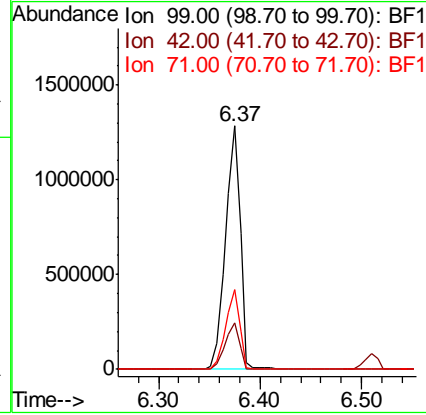
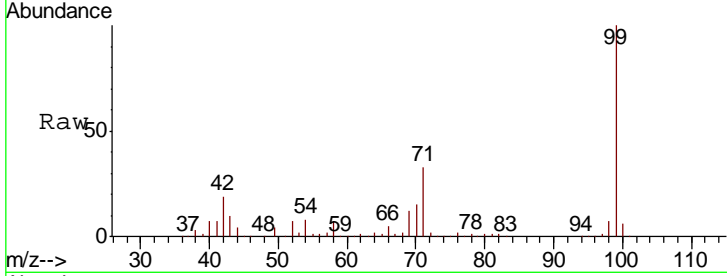
Instrument :
 BNA_F
 ClientSampled :
 SR-10

Tgt Ion: 99 Resp: 1296811

Ion	Ratio	Lower	Upper
99	100		
42	19.3	16.3	24.5
71	32.9	26.2	39.4

Manual Integrations
 APPROVED

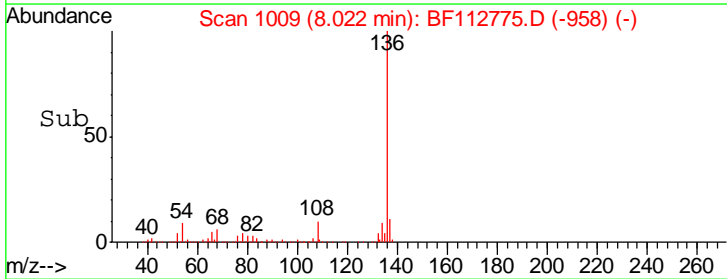
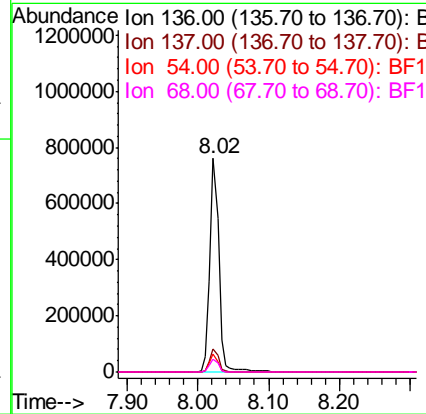
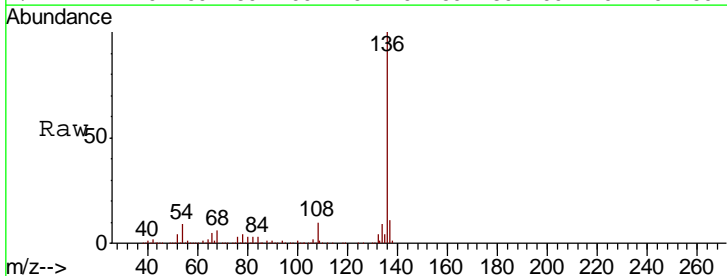
Sohil
 3/1/2019 3:00:18 PM

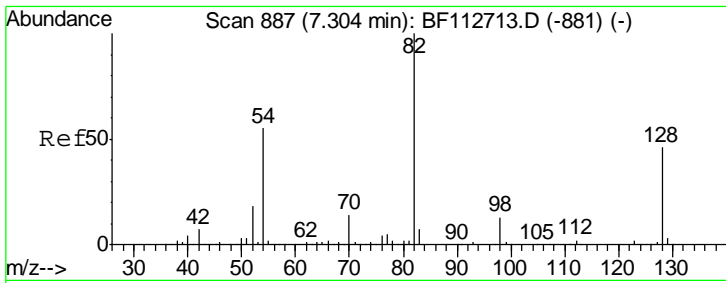


#21
 Naphthalene-d8
 Concen: 20.000 ng
 RT: 8.02 min Scan# 1009
 Delta R.T. 0.00 min
 Lab File: BF112775.D
 Acq: 28 Feb 2019 21:44

Tgt Ion: 136 Resp: 679049

Ion	Ratio	Lower	Upper
136	100		
137	10.8	8.9	13.3
54	8.5	7.3	10.9
68	6.2	5.4	8.2





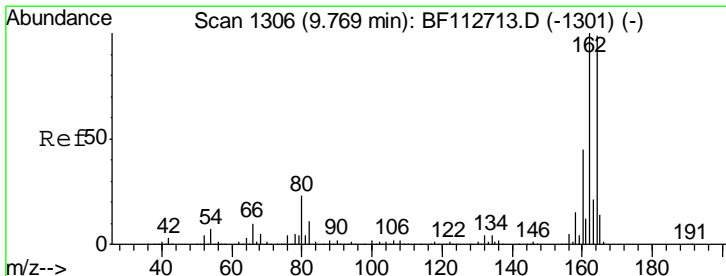
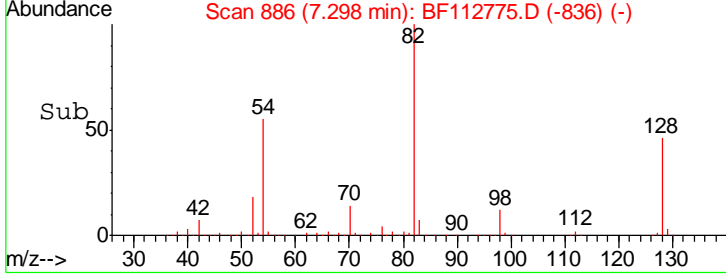
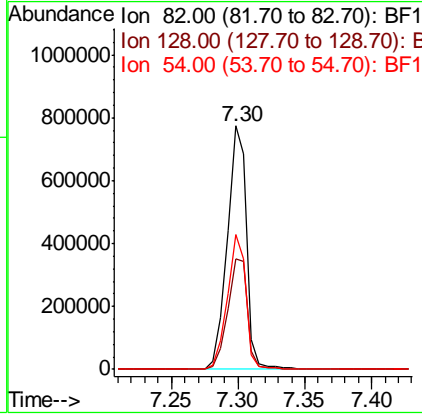
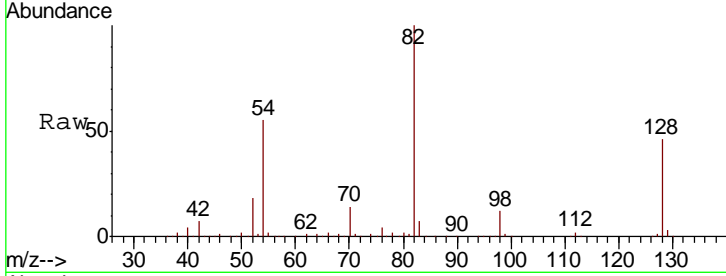
#23
 Nitrobenzene-d5
 Concen: 69.894 ng
 RT: 7.30 min Scan# 886
 Delta R.T. -0.01 min
 Lab File: BF112775.D
 Acq: 28 Feb 2019 21:44

Instrument :
 BNA_F
ClientSampled :
 SR-10

Tgt Ion	Resp	Lower	Upper
82	100		
128	45.6	36.3	54.5
54	55.1	43.7	65.5

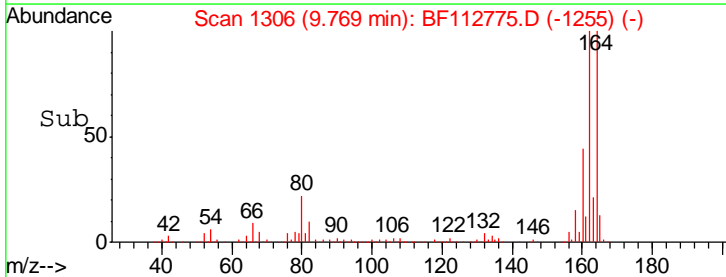
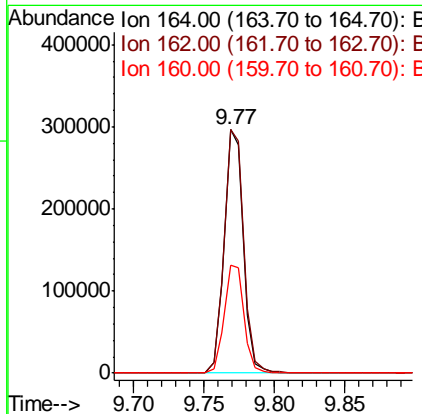
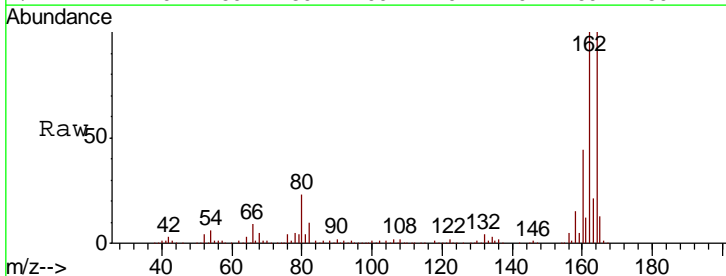
Manual Integrations
APPROVED

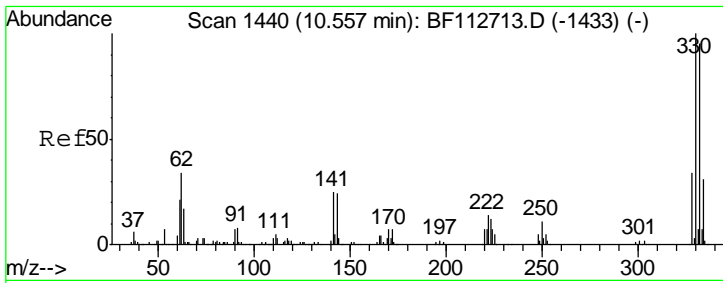
Sohil
 3/1/2019 3:00:18 PM



#39
 Acenaphthene-d10
 Concen: 20.000 ng
 RT: 9.77 min Scan# 1306
 Delta R.T. 0.00 min
 Lab File: BF112775.D
 Acq: 28 Feb 2019 21:44

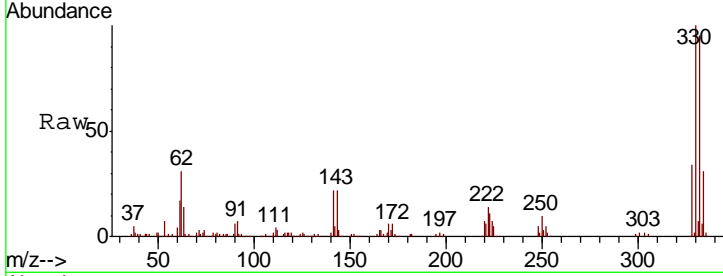
Tgt Ion	Resp	Lower	Upper
164	100		
162	100.0	80.6	120.8
160	44.4	36.0	54.0





#42
 2,4,6-Tribromophenol
 Concen: 90.107 ng
 RT: 10.56 min Scan# 1440
 Delta R.T. 0.00 min
 Lab File: BF112775.D
 Acq: 28 Feb 2019 21:44

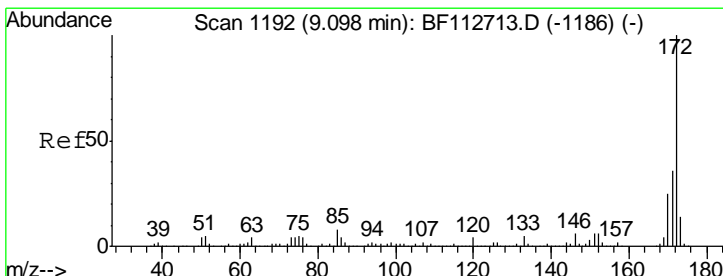
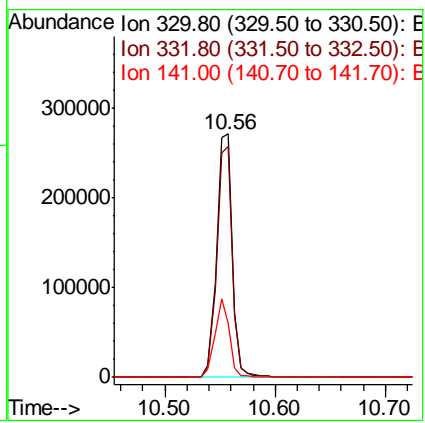
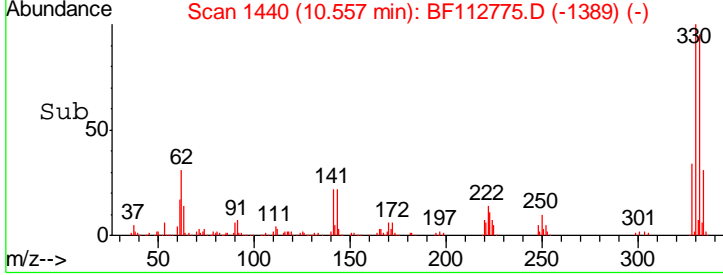
Instrument :
 BNA_F
ClientSampled :
 SR-10



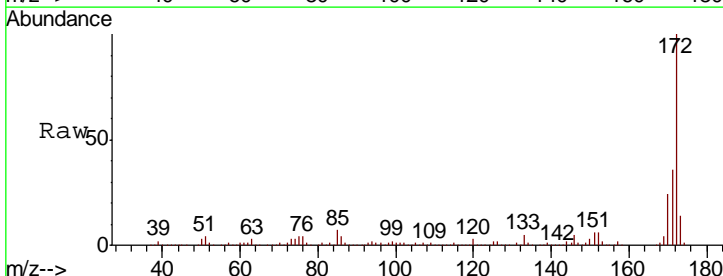
Tgt Ion: 330 Resp: 265973

Ion	Ratio	Lower	Upper
330	100		
332	94.7	76.2	114.4
141	30.1	27.0	40.6

Manual Integrations
APPROVED
 Sohil
 3/1/2019 3:00:18 PM

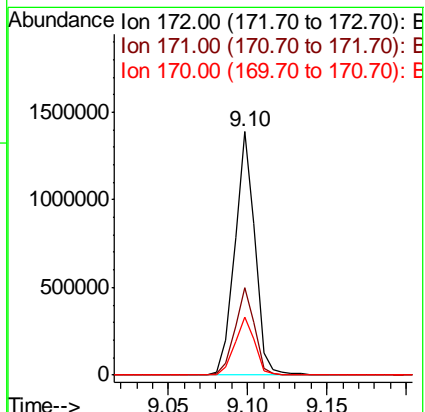
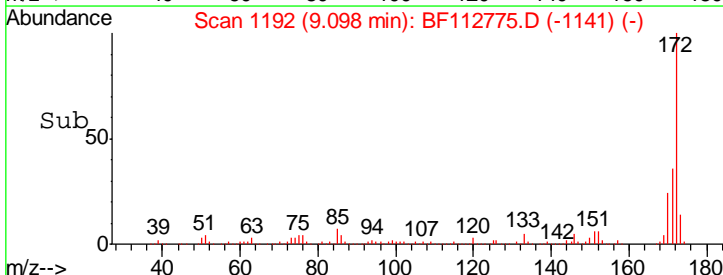


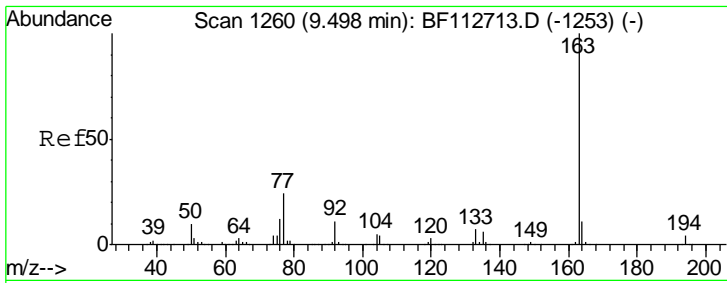
#45
 2-Fluorobiphenyl
 Concen: 73.632 ng
 RT: 9.10 min Scan# 1192
 Delta R.T. 0.00 min
 Lab File: BF112775.D
 Acq: 28 Feb 2019 21:44



Tgt Ion: 172 Resp: 1221524

Ion	Ratio	Lower	Upper
172	100		
171	35.9	29.0	43.4
170	23.8	20.0	30.0





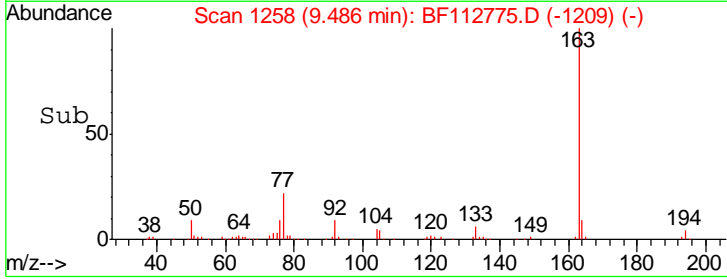
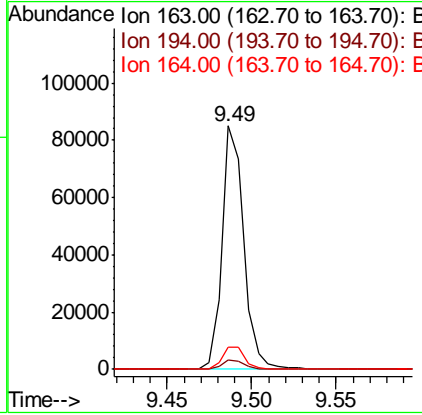
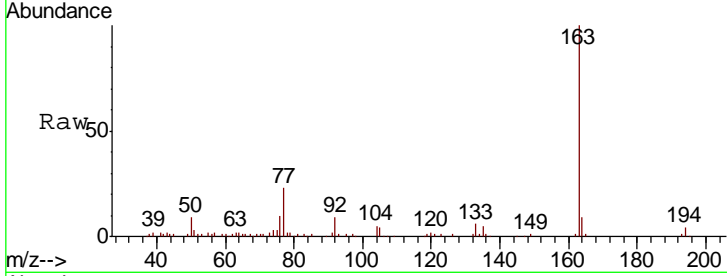
#50
 Dimethylphthalate
 Concen: 3.726 ng
 RT: 9.49 min Scan# 1258
 Delta R.T. -0.01 min
 Lab File: BF112775.D
 Acq: 28 Feb 2019 21:44

Instrument :
 BNA_F
 ClientSampled :
 SR-10

Tgt Ion	Resp	Lower	Upper
163	100		
194	3.7	3.0	4.4
164	9.2	8.4	12.6

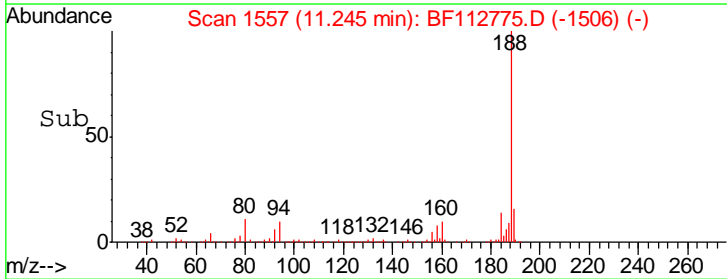
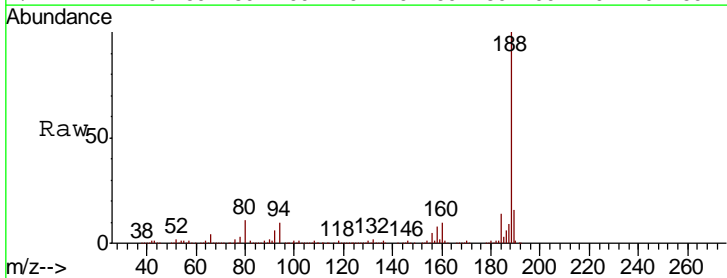
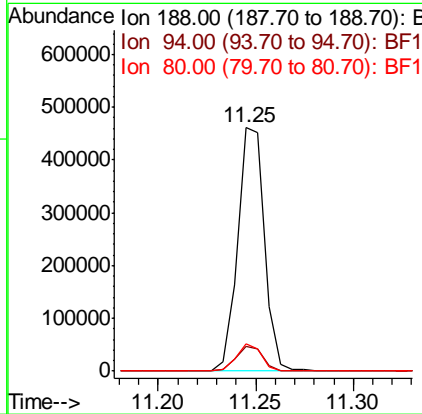
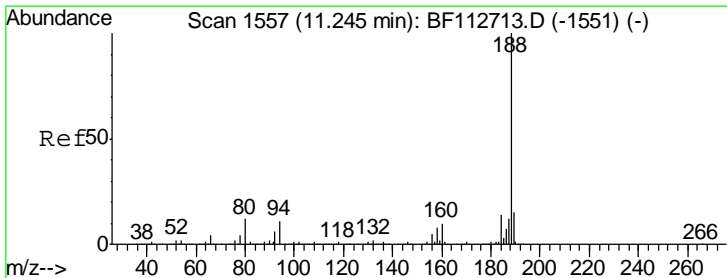
Manual Integrations
 APPROVED

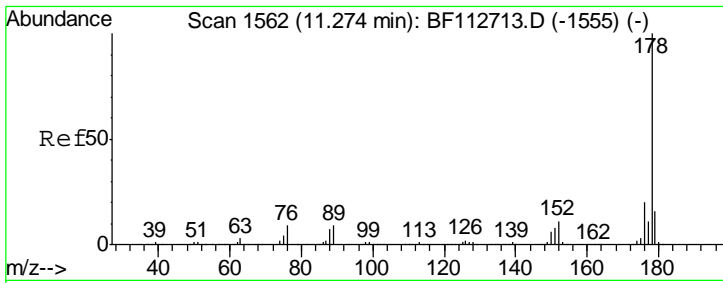
Sohil
 3/1/2019 3:00:18 PM



#64
 Phenanthrene-d10
 Concen: 20.000 ng
 RT: 11.25 min Scan# 1557
 Delta R.T. 0.00 min
 Lab File: BF112775.D
 Acq: 28 Feb 2019 21:44

Tgt Ion	Resp	Lower	Upper
188	100		
94	10.4	9.0	13.4
80	11.2	9.2	13.8





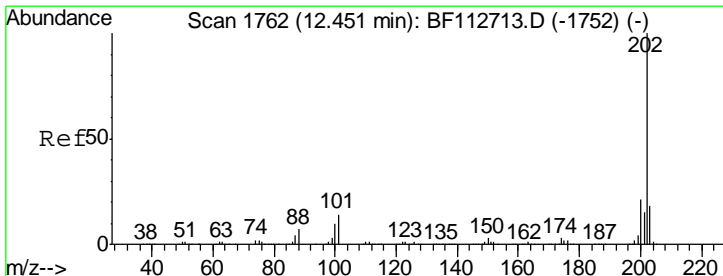
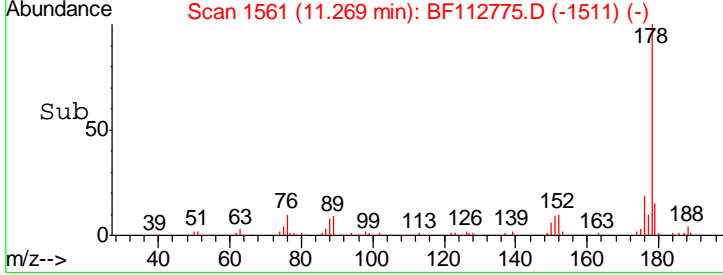
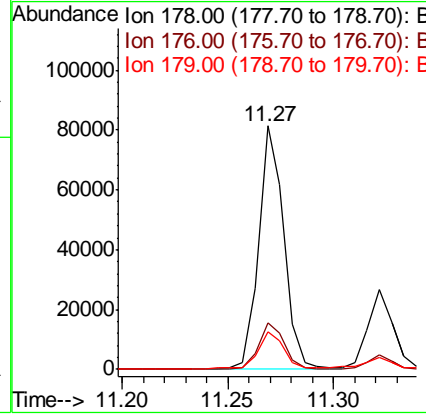
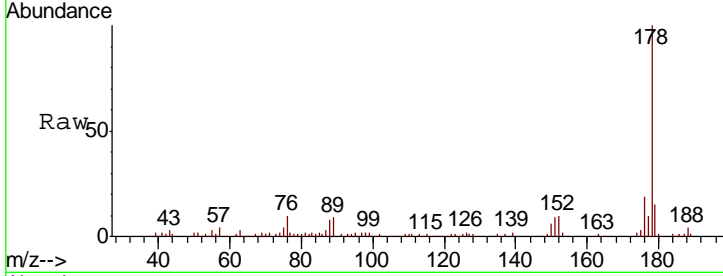
#71
 Phenanthrene
 Concen: 3.123 ng
 RT: 11.27 min Scan# 1561
 Delta R.T. -0.01 min
 Lab File: BF112775.D
 Acq: 28 Feb 2019 21:44

Instrument :
 BNA_F
 ClientSampled :
 SR-10

Tgt Ion	Resp	Lower	Upper
178	100		
176	18.9	16.3	24.5
179	15.3	12.7	19.1

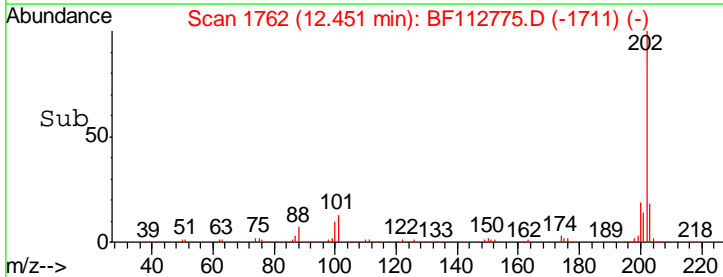
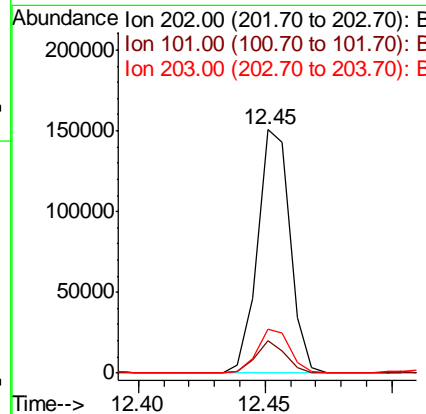
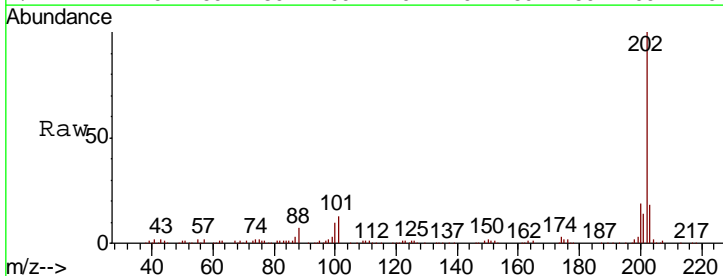
Manual Integrations
 APPROVED

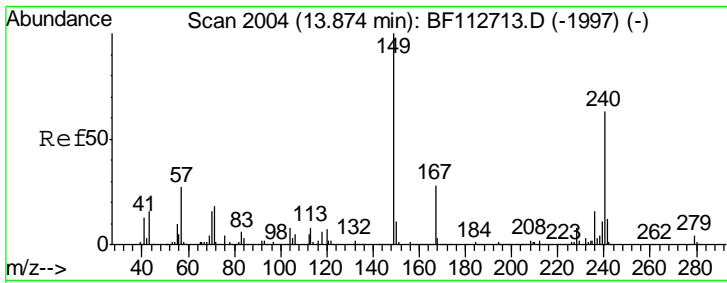
Sohil
 3/1/2019 3:00:18 PM



#75
 Fluoranthene
 Concen: 5.806 ng
 RT: 12.45 min Scan# 1762
 Delta R.T. 0.00 min
 Lab File: BF112775.D
 Acq: 28 Feb 2019 21:44

Tgt Ion	Resp	Lower	Upper
202	100		
101	13.3	0.0	33.8
203	17.8	0.0	38.4





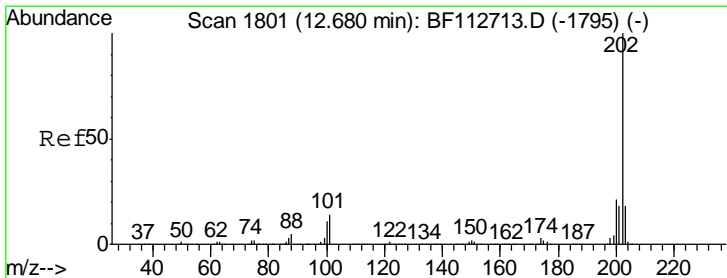
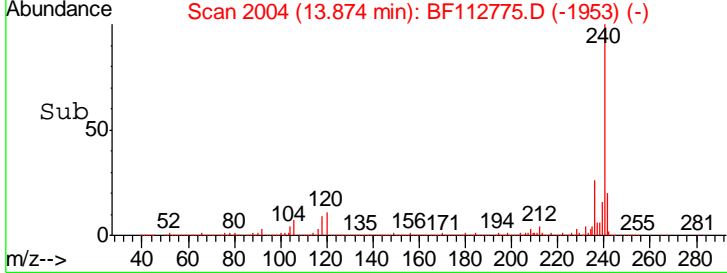
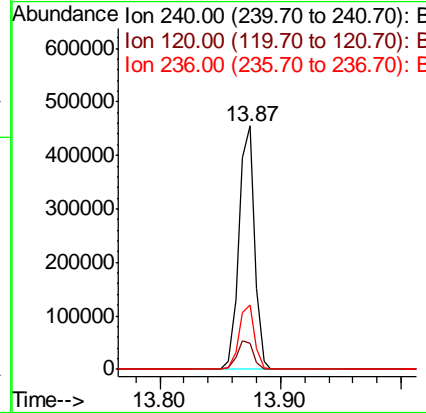
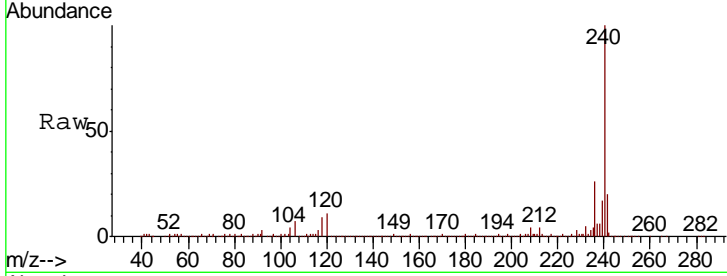
#76
 Chrysene-d12
 Concen: 20.000 ng
 RT: 13.87 min Scan# 2004
 Delta R.T. 0.00 min
 Lab File: BF112775.D
 Acq: 28 Feb 2019 21:44

Instrument :
 BNA_F
 ClientSampled :
 SR-10

Tgt Ion	Resp	Lower	Upper
240	413023		
240	100		
120	10.7	8.9	13.3
236	26.4	20.7	31.1

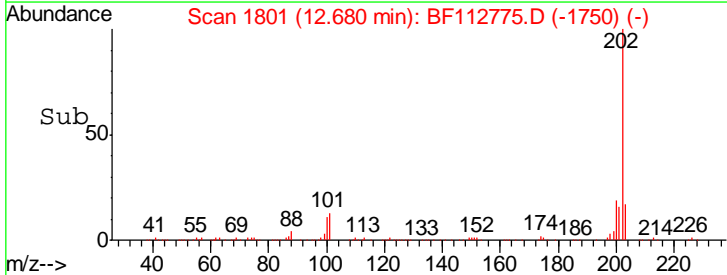
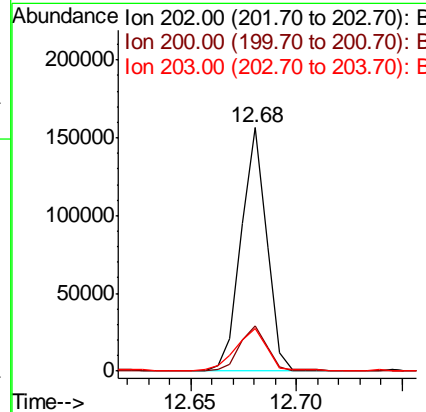
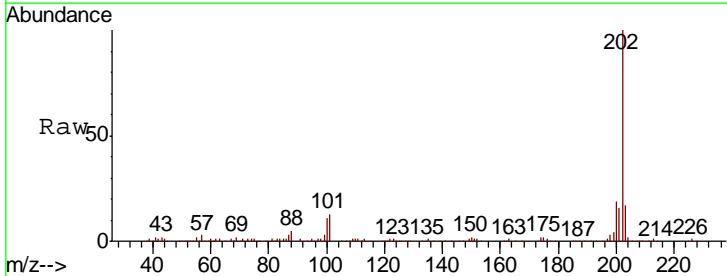
Manual Integrations
 APPROVED

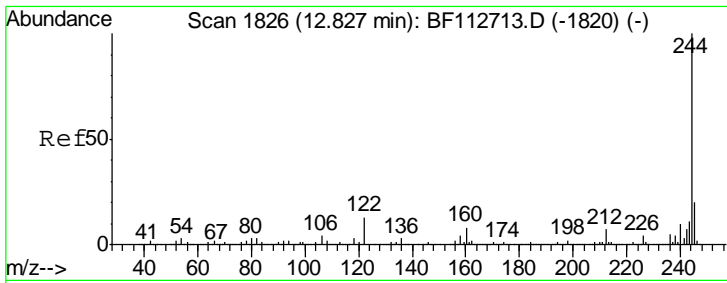
Sohil
 3/1/2019 3:00:18 PM



#78
 Pyrene
 Concen: 3.779 ng
 RT: 12.68 min Scan# 1801
 Delta R.T. 0.00 min
 Lab File: BF112775.D
 Acq: 28 Feb 2019 21:44

Tgt Ion	Resp	Lower	Upper
202	131592		
202	100		
200	18.8	17.0	25.4
203	17.3	14.4	21.6



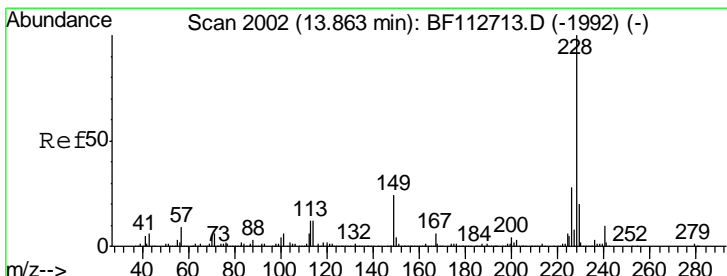
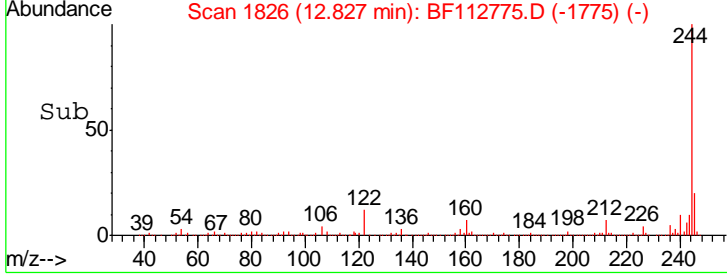
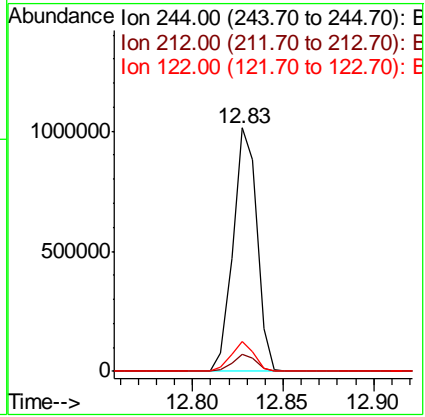
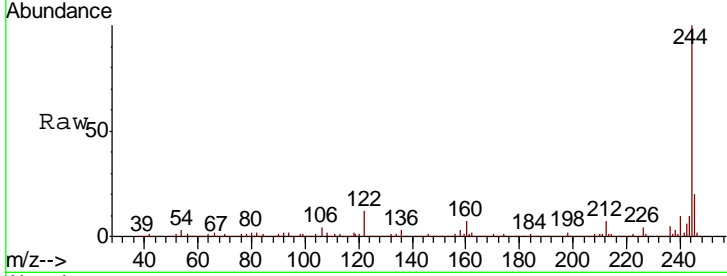


#79
 Terphenyl-d14
 Concen: 43.692 ng
 RT: 12.83 min Scan# 1826
 Delta R.T. 0.00 min
 Lab File: BF112775.D
 Acq: 28 Feb 2019 21:44

Instrument :
 BNA_F
 ClientSampled :
 SR-10

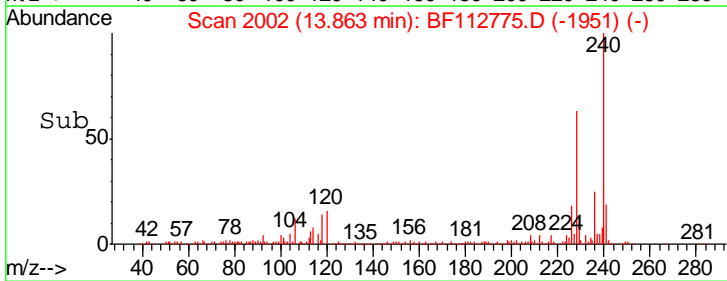
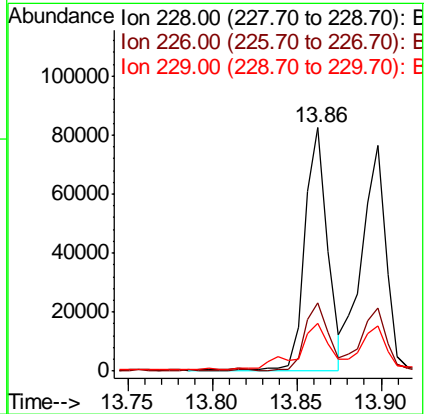
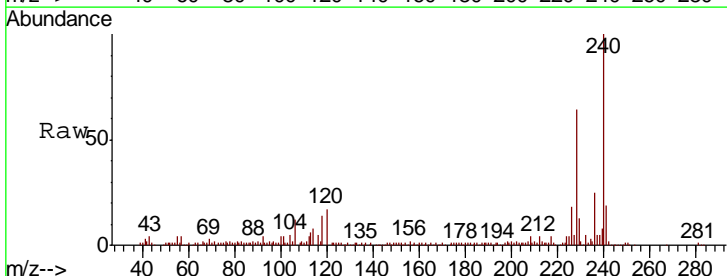
Tgt Ion	Resp	Lower	Upper
244	100		
212	6.8	5.6	8.4
122	12.3	10.5	15.7

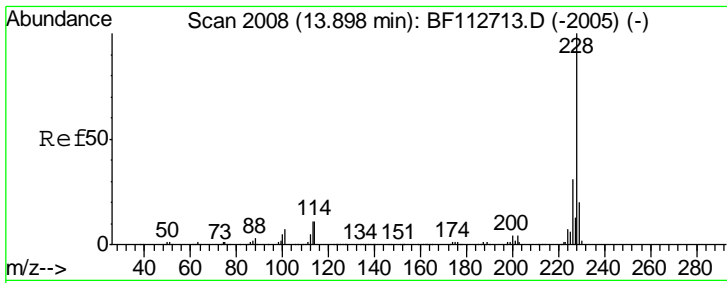
Manual Integrations
APPROVED
 Sohil
 3/1/2019 3:00:18 PM



#81
 Benzo(a)anthracene
 Concen: 2.648 ng
 RT: 13.86 min Scan# 2002
 Delta R.T. 0.00 min
 Lab File: BF112775.D
 Acq: 28 Feb 2019 21:44

Tgt Ion	Resp	Lower	Upper
228	100		
226	27.9	22.2	33.4
229	19.7	16.0	24.0



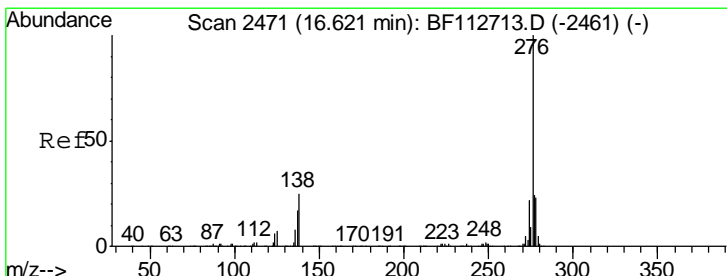
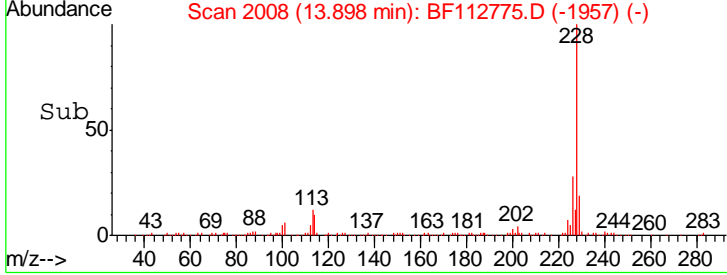
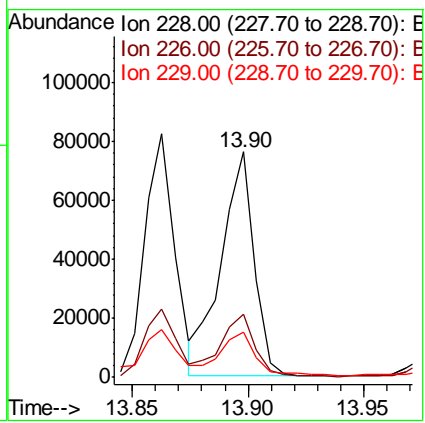
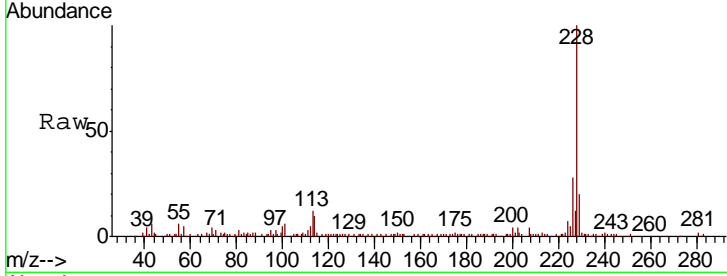


#83
 Chrysene
 Concen: 2.712 ng
 RT: 13.90 min Scan# 2008
 Delta R.T. 0.00 min
 Lab File: BF112775.D
 Acq: 28 Feb 2019 21:44

Instrument :
 BNA_F
 ClientSampled :
 SR-10

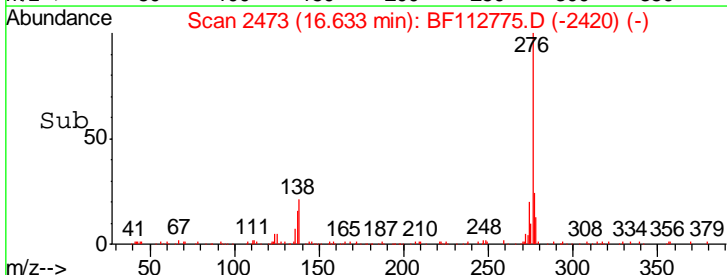
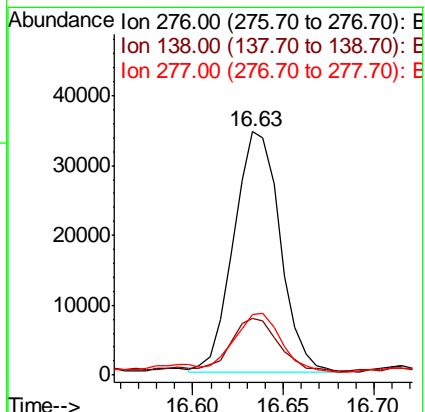
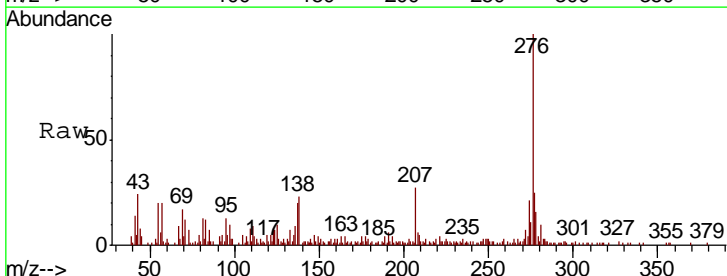
Tgt Ion	Resp	Lower	Upper
228	100		
226	28.0	24.9	37.3
229	19.9	16.3	24.5

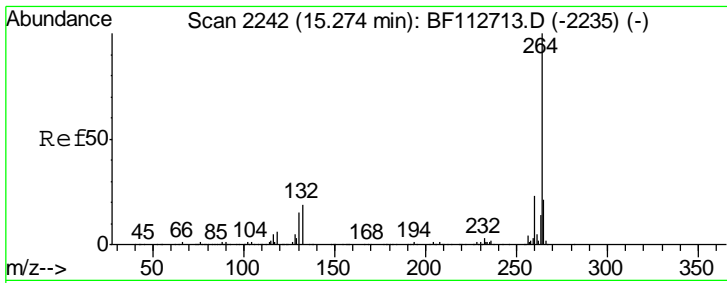
Manual Integrations
APPROVED
 Sohil
 3/1/2019 3:00:18 PM



#86
 Indeno(1,2,3-cd)pyrene
 Concen: 2.581 ng m
 RT: 16.63 min Scan# 2473
 Delta R.T. 0.01 min
 Lab File: BF112775.D
 Acq: 28 Feb 2019 21:44

Tgt Ion	Resp	Lower	Upper
276	100		
138	6.2	23.2	34.8#
277	5.1	19.9	29.9#





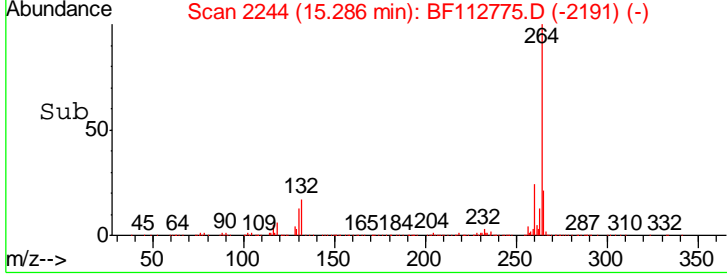
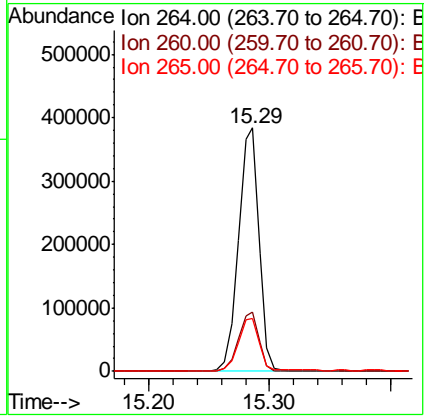
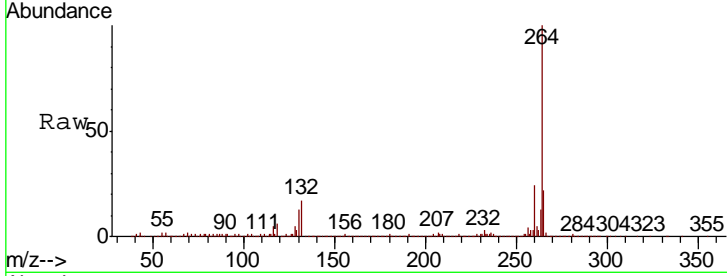
#87
 Perylene-d12
 Concen: 20.000 ng
 RT: 15.29 min Scan# 2244
 Delta R.T. 0.01 min
 Lab File: BF112775.D
 Acq: 28 Feb 2019 21:44

Instrument :
 BNA_F
 ClientSampled :
 SR-10

Tgt Ion	Resp	Lower	Upper
264	100		
260	24.4	18.7	28.1
265	21.6	17.2	25.8

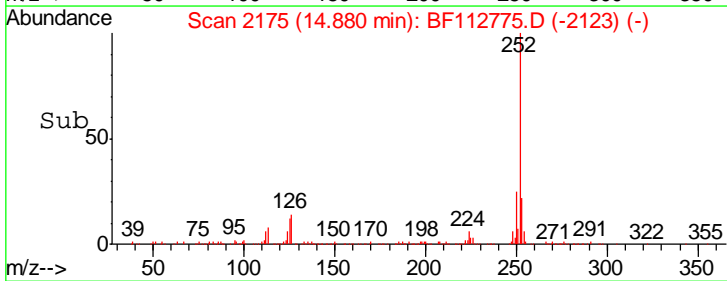
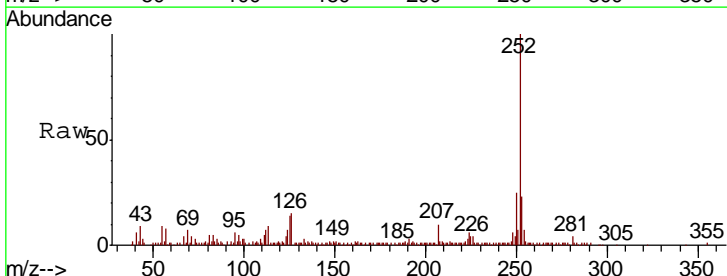
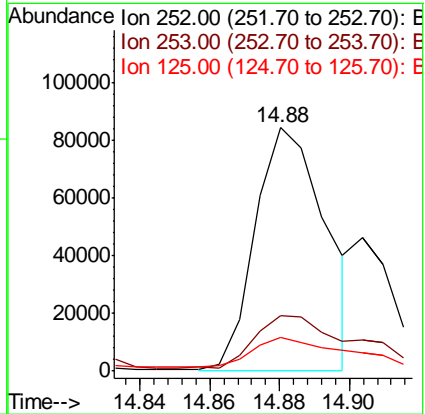
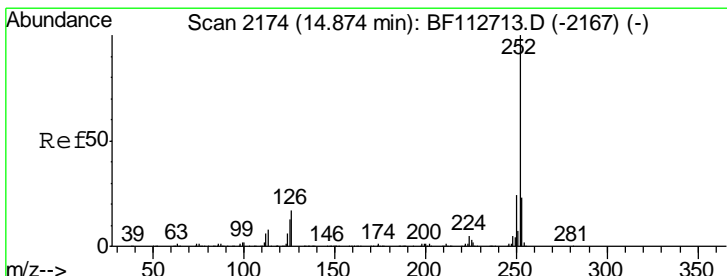
Manual Integrations
 APPROVED

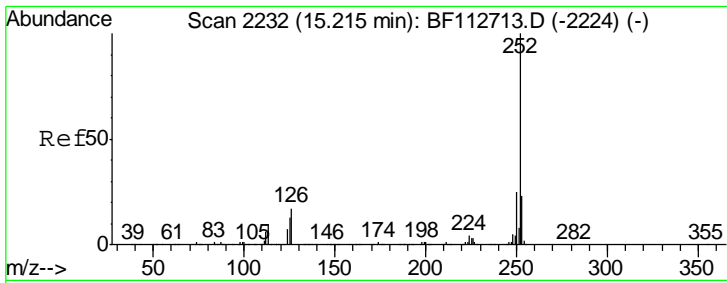
Sohil
 3/1/2019 3:00:18 PM



#88
 Benzo(b)fluoranthene
 Concen: 4.063 ng m
 RT: 14.88 min Scan# 2175
 Delta R.T. 0.01 min
 Lab File: BF112775.D
 Acq: 28 Feb 2019 21:44

Tgt Ion	Resp	Lower	Upper
252	100		
253	22.8	18.0	27.0
125	13.6	10.2	15.2





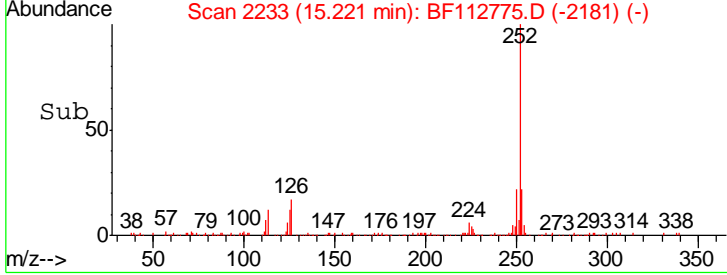
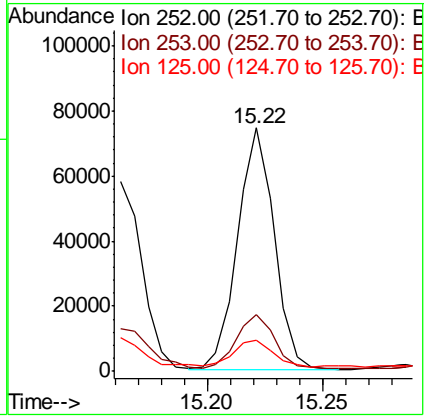
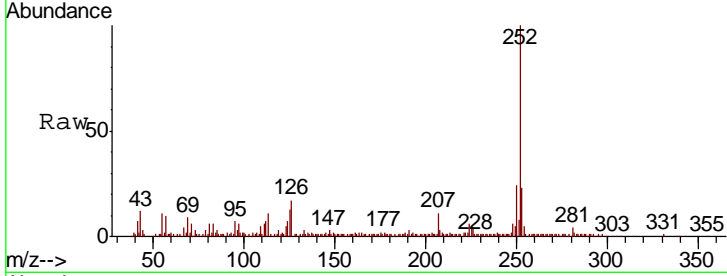
#90
 Benzo(a)pyrene
 Concen: 3.164 ng
 RT: 15.22 min Scan# 2233
 Delta R.T. 0.01 min
 Lab File: BF112775.D
 Acq: 28 Feb 2019 21:44

Instrument :
 BNA_F
 ClientSampled :
 SR-10

Tgt Ion	Resp	Lower	Upper
252	100		
253	23.2	18.0	27.0
125	13.0	10.7	16.1

Manual Integrations
 APPROVED

Sohil
 3/1/2019 3:00:18 PM



#92
 Benzo(g,h,i)perylene
 Concen: 2.861 ng
 RT: 17.04 min Scan# 2543
 Delta R.T. 0.01 min
 Lab File: BF112775.D
 Acq: 28 Feb 2019 21:44

Tgt Ion	Resp	Lower	Upper
276	100		
277	23.4	18.6	27.8
138	23.8	19.4	29.0

