

Data Path : Z:\svoasrv\HPCHEM1\BNA_F\Data\BF033021\
 Data File : BF123527.D
 Acq On : 30 Mar 2021 18:14
 Operator : JU/CG
 Sample : M1821-01
 Misc :
 ALS Vial : 13 Sample Multiplier: 1

Instrument :
 BNA_F
 ClientSampleId :
 EL-509-STREET-LEVEL

Quant Time: Mar 30 18:52:12 2021
 Quant Method : Z:\SVOASRV\HPCHEM1\BNA_F\METHODS\8270-BF032321.M
 Quant Title : ASP BNA STANDARDS FOR 5 POINT CALIBRATION
 QLast Update : Tue Mar 30 11:51:25 2021
 Response via : Initial Calibration

Compound	R.T.	QIon	Response	Conc	Units	Dev(Min)

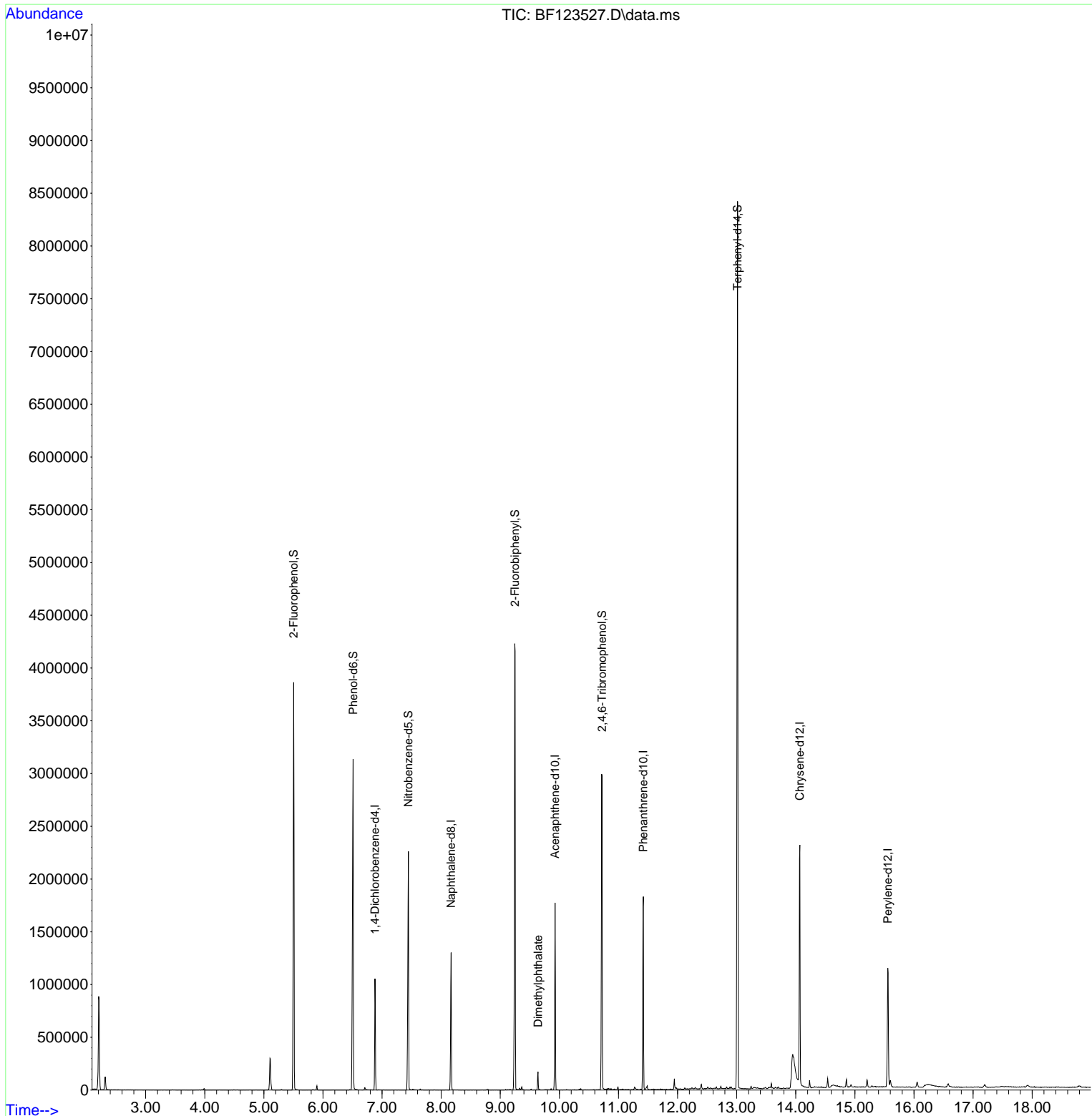
Internal Standards						
1) 1,4-Dichlorobenzene-d4	6.881	152	142285	20.00	ng	0.00
21) Naphthalene-d8	8.169	136	531661	20.00	ng	# 0.00
39) Acenaphthene-d10	9.928	164	334398	20.00	ng	0.00
64) Phenanthrene-d10	11.422	188	681406	20.00	ng	# 0.00
76) Chrysene-d12	14.068	240	825372	20.00	ng	# 0.00
86) Perylene-d12	15.557	264	555520	20.00	ng	-0.01
System Monitoring Compounds						
5) 2-Fluorophenol	5.504	112	899489	103.42	ng	0.00
7) Phenol-d6	6.510	99	965179	83.36	ng	0.00
23) Nitrobenzene-d5	7.445	82	686139	69.65	ng	-0.01
42) 2,4,6-Tribromophenol	10.722	330	393377	105.22	ng	0.00
45) 2-Fluorobiphenyl	9.251	172	1436345	61.36	ng	0.00
79) Terphenyl-d14	13.016	244	2873482	59.00	ng	0.00
Target Compounds						
50) Dimethylphthalate	9.639	163	60652	2.55	ng	Qvalue 99

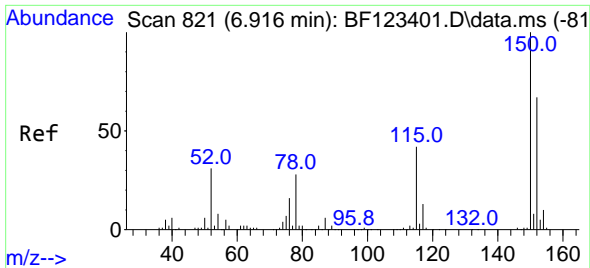
(#) = qualifier out of range (m) = manual integration (+) = signals summed

Data Path : Z:\svoasrv\HPCHEM1\BNA_F\Data\BF033021\
 Data File : BF123527.D
 Acq On : 30 Mar 2021 18:14
 Operator : JU/CG
 Sample : M1821-01
 Misc :
 ALS Vial : 13 Sample Multiplier: 1

Instrument :
 BNA_F
ClientSampled :
 EL-509-STREET-LEVEL

Quant Time: Mar 30 18:52:12 2021
 Quant Method : Z:\SVOASRV\HPCHEM1\BNA_F\METHODS\8270-BF032321.M
 Quant Title : ASP BNA STANDARDS FOR 5 POINT CALIBRATION
 QLast Update : Tue Mar 30 11:51:25 2021
 Response via : Initial Calibration

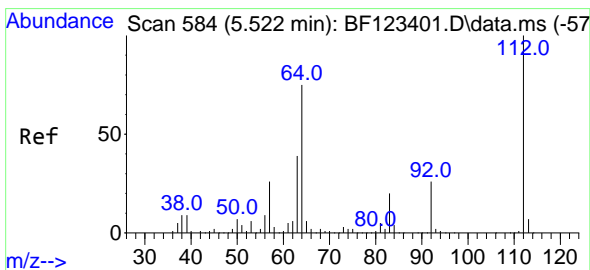
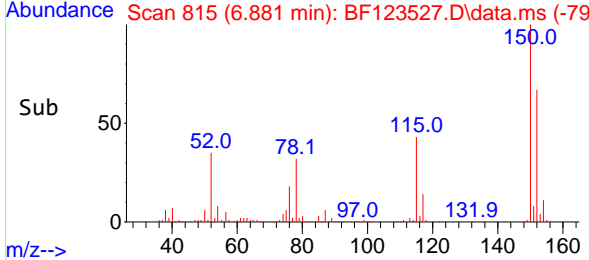
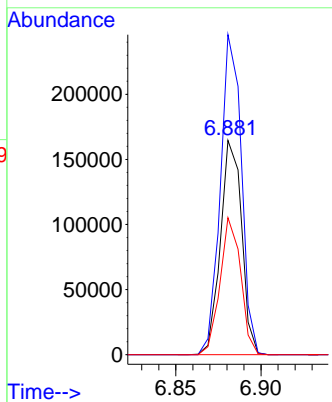
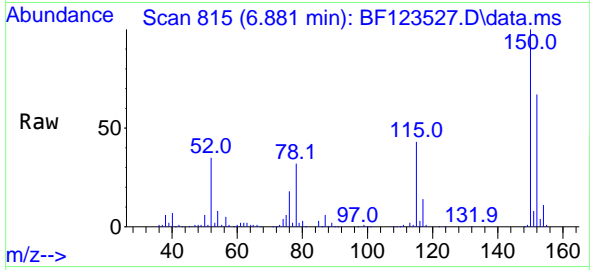




#1
 1,4-Dichlorobenzene-d4
 Concen: 20.00 ng
 RT: 6.881 min Scan# 815
 Delta R.T. -0.006 min
 Lab File: BF123527.D
 Acq: 30 Mar 2021 18:14

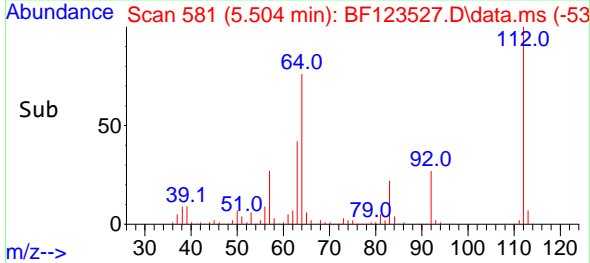
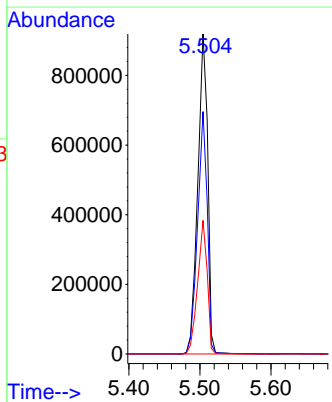
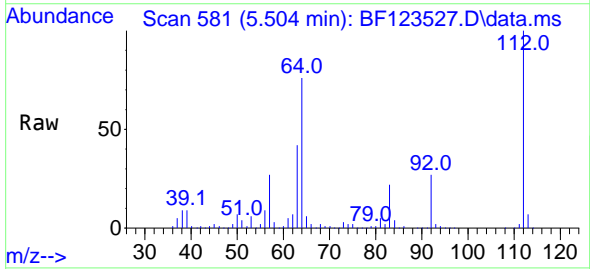
Instrument :
 BNA_F
ClientSampled :
 EL-509-STREET-LEVEL

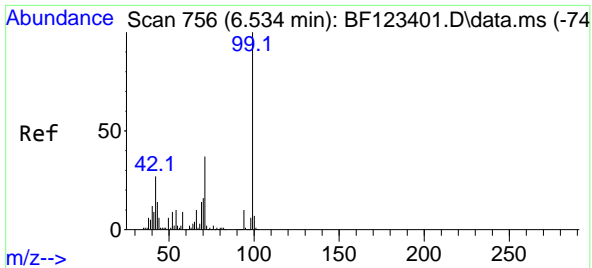
Tgt Ion:152 Resp: 142285
 Ion Ratio Lower Upper
 152 100
 150 149.3 125.8 188.6
 115 63.9 49.3 73.9



#5
 2-Fluorophenol
 Concen: 103.42 ng
 RT: 5.504 min Scan# 581
 Delta R.T. -0.000 min
 Lab File: BF123527.D
 Acq: 30 Mar 2021 18:14

Tgt Ion:112 Resp: 899489
 Ion Ratio Lower Upper
 112 100
 64 75.8 46.9 70.3#
 63 41.8 24.5 36.7#

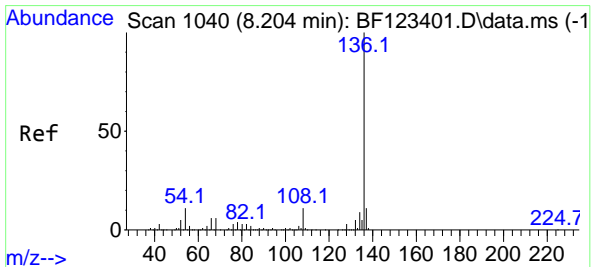
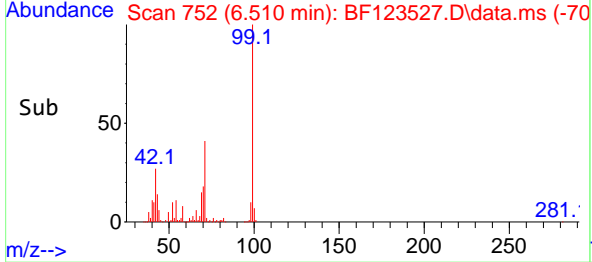
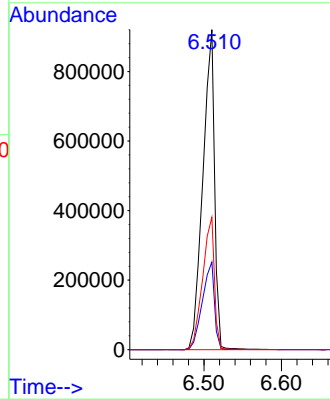
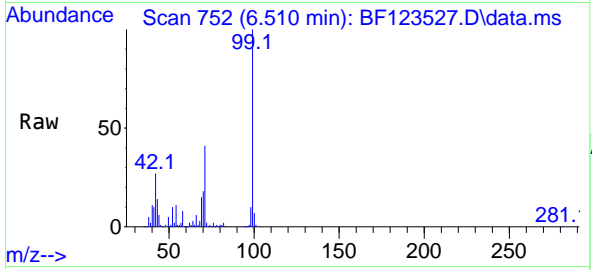




#7
Phenol-d6
Concen: 83.36 ng
RT: 6.510 min Scan# 752
Delta R.T. -0.006 min
Lab File: BF123527.D
Acq: 30 Mar 2021 18:14

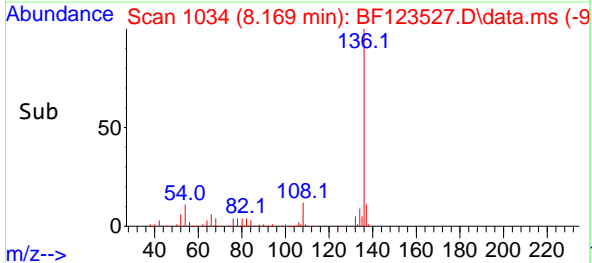
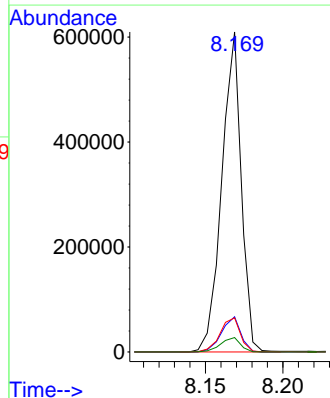
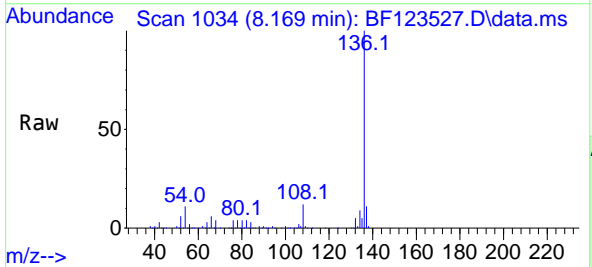
Instrument :
BNA_F
ClientSampled :
EL-509-STREET-LEVEL

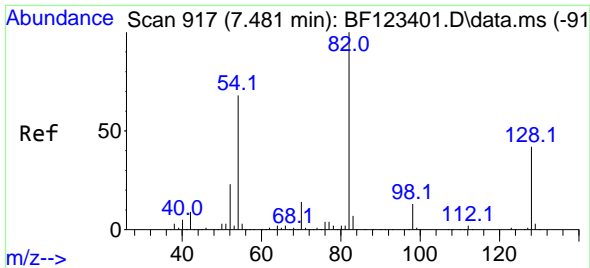
Tgt Ion: 99 Resp: 965179
Ion Ratio Lower Upper
99 100
42 27.4 13.8 20.6#
71 41.3 26.9 40.3#



#21
Naphthalene-d8
Concen: 20.00 ng
RT: 8.169 min Scan# 1034
Delta R.T. -0.006 min
Lab File: BF123527.D
Acq: 30 Mar 2021 18:14

Tgt Ion:136 Resp: 531661
Ion Ratio Lower Upper
136 100
137 11.0 8.8 13.2
54 10.7 5.5 8.3#
68 4.5 4.6 6.8#



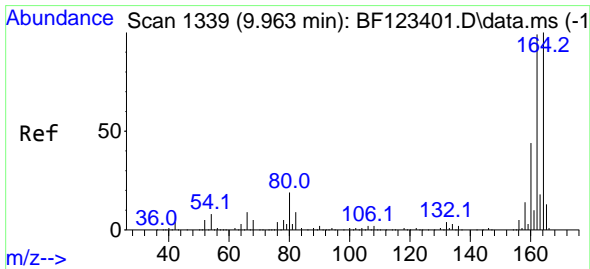
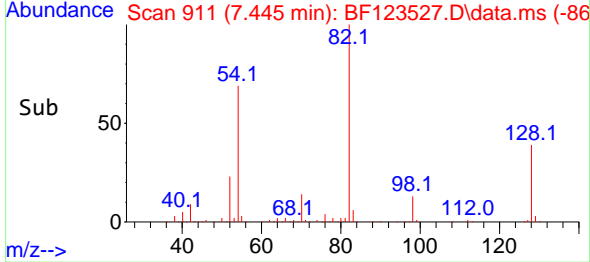
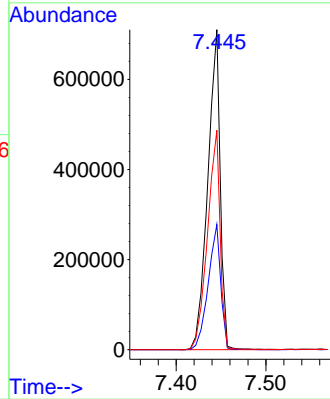
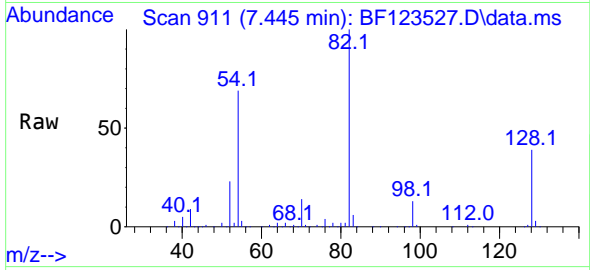


#23
 Nitrobenzene-d5
 Concen: 69.65 ng
 RT: 7.445 min Scan# 911
 Delta R.T. -0.012 min
 Lab File: BF123527.D
 Acq: 30 Mar 2021 18:14

Instrument :
 BNA_F
ClientSampleId :
 EL-509-STREET-LEVEL

Tgt Ion: 82 Resp: 686139

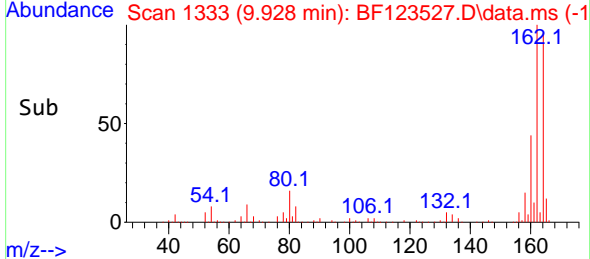
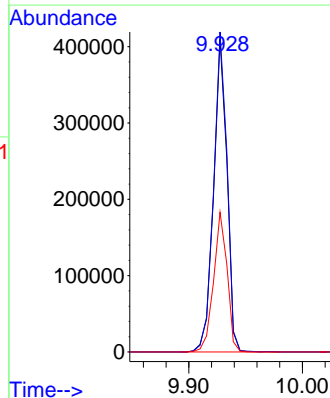
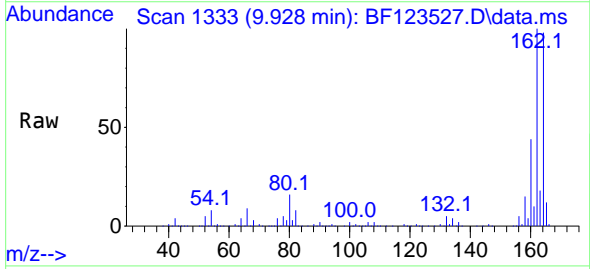
Ion	Ratio	Lower	Upper
82	100		
128	39.1	37.0	55.4
54	68.5	38.4	57.6#

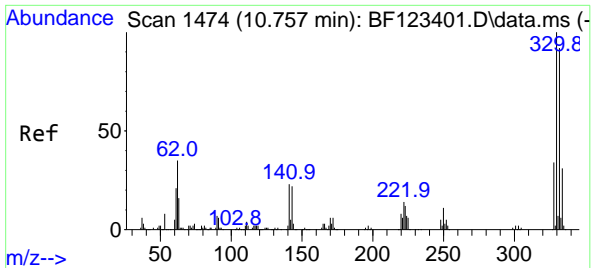


#39
 Acenaphthene-d10
 Concen: 20.00 ng
 RT: 9.928 min Scan# 1333
 Delta R.T. -0.006 min
 Lab File: BF123527.D
 Acq: 30 Mar 2021 18:14

Tgt Ion: 164 Resp: 334398

Ion	Ratio	Lower	Upper
164	100		
162	102.4	80.8	121.2
160	44.7	35.4	53.0



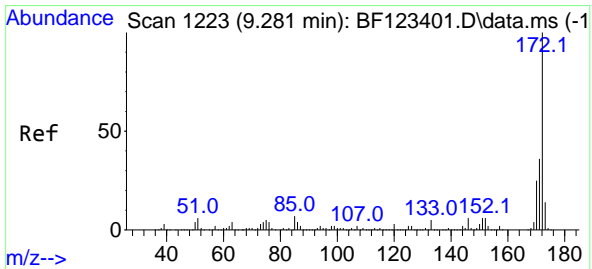
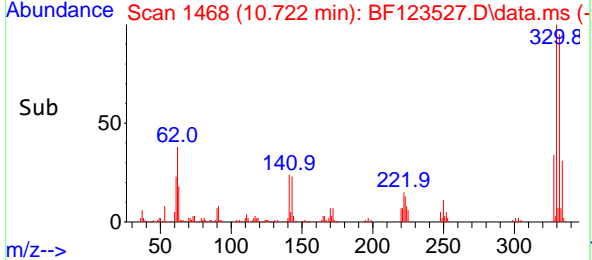
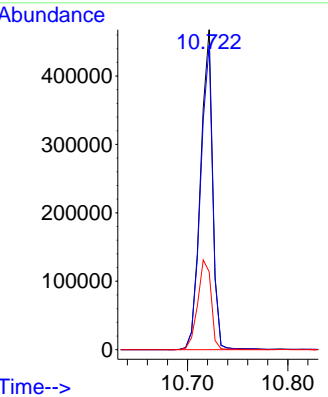
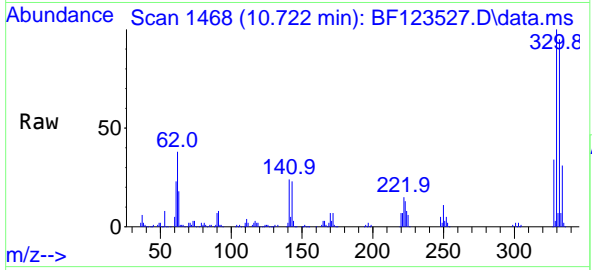


#42
 2,4,6-Tribromophenol
 Concen: 105.22 ng
 RT: 10.722 min Scan# 1468
 Delta R.T. -0.006 min
 Lab File: BF123527.D
 Acq: 30 Mar 2021 18:14

Instrument :
 BNA_F
ClientSampled :
 EL-509-STREET-LEVEL

Tgt Ion: 330 Resp: 393377

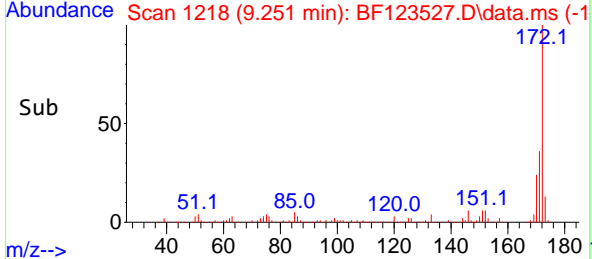
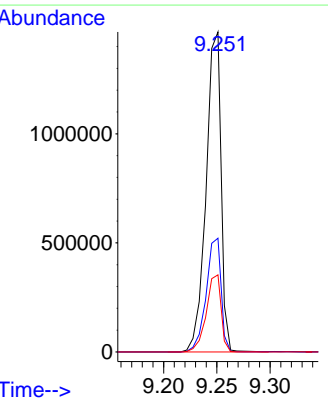
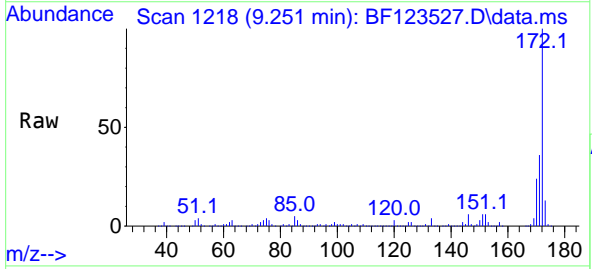
Ion	Ratio	Lower	Upper
330	100		
332	95.5	77.5	116.3
141	31.1	23.8	35.8

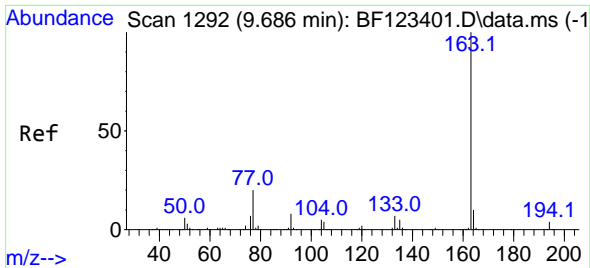


#45
 2-Fluorobiphenyl
 Concen: 61.36 ng
 RT: 9.251 min Scan# 1218
 Delta R.T. -0.006 min
 Lab File: BF123527.D
 Acq: 30 Mar 2021 18:14

Tgt Ion: 172 Resp: 1436345

Ion	Ratio	Lower	Upper
172	100		
171	35.6	29.6	44.4
170	24.1	19.5	29.3



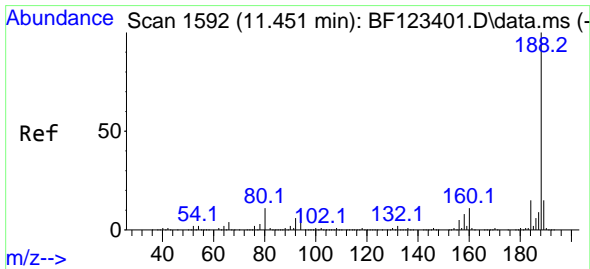
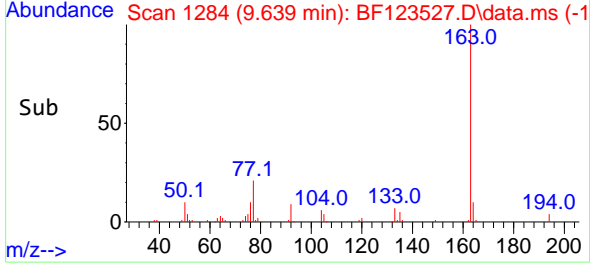
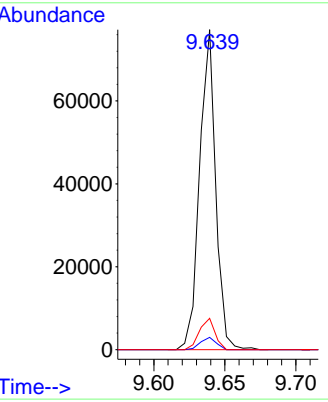
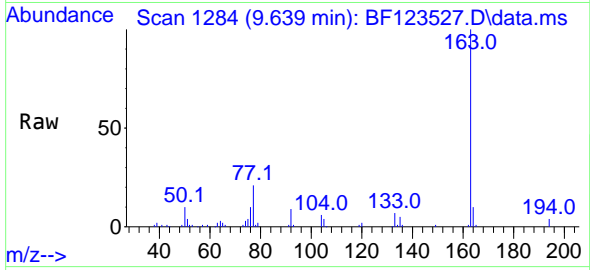


#50
 Dimethylphthalate
 Concen: 2.55 ng
 RT: 9.639 min Scan# 1284
 Delta R.T. -0.018 min
 Lab File: BF123527.D
 Acq: 30 Mar 2021 18:14

Instrument :
 BNA_F
ClientSampled :
 EL-509-STREET-LEVEL

Tgt Ion:163 Resp: 60652

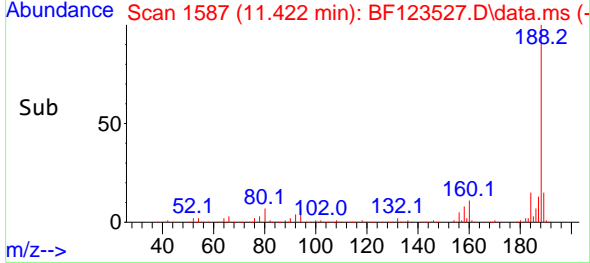
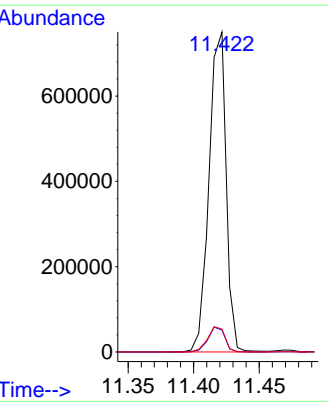
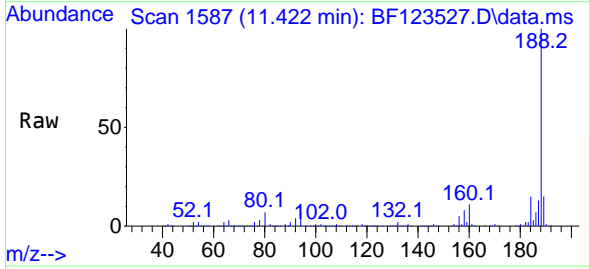
Ion	Ratio	Lower	Upper
163	100		
194	3.9	3.4	5.0
164	9.8	8.1	12.1

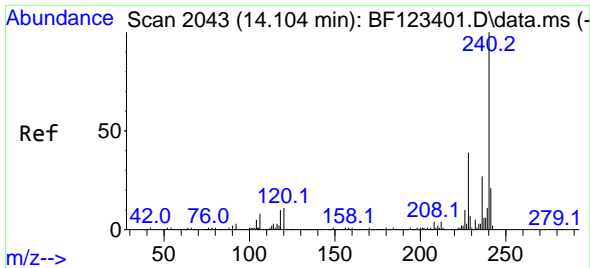


#64
 Phenanthrene-d10
 Concen: 20.00 ng
 RT: 11.422 min Scan# 1587
 Delta R.T. -0.000 min
 Lab File: BF123527.D
 Acq: 30 Mar 2021 18:14

Tgt Ion:188 Resp: 681406

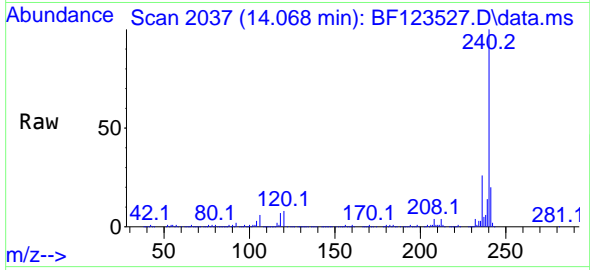
Ion	Ratio	Lower	Upper
188	100		
94	6.8	7.4	11.2#
80	7.2	8.2	12.4#



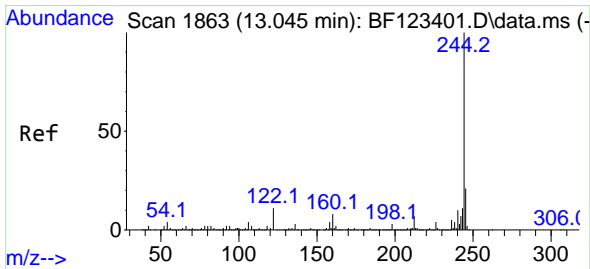
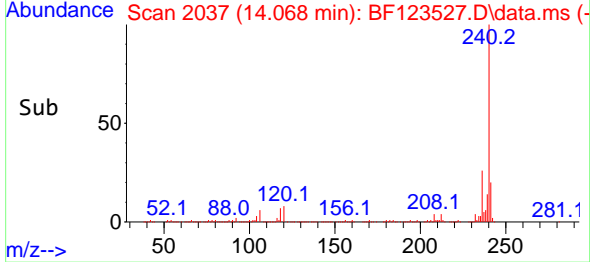
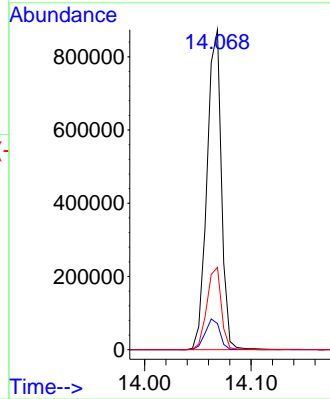


#76
 Chrysene-d12
 Concen: 20.00 ng
 RT: 14.068 min Scan# 2037
 Delta R.T. -0.006 min
 Lab File: BF123527.D
 Acq: 30 Mar 2021 18:14

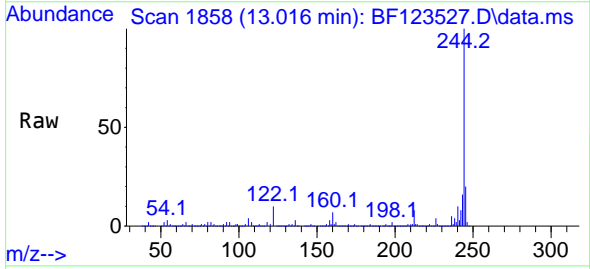
Instrument :
 BNA_F
ClientSampled :
 EL-509-STREET-LEVEL



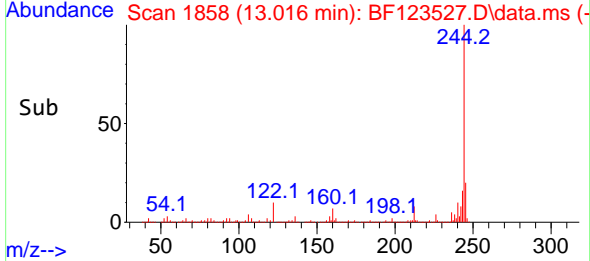
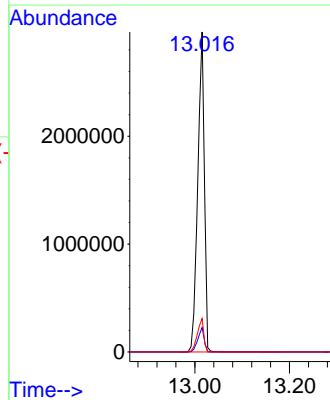
Tgt Ion:240 Resp: 825372
 Ion Ratio Lower Upper
 240 100
 120 8.2 8.6 12.8#
 236 25.7 20.3 30.5

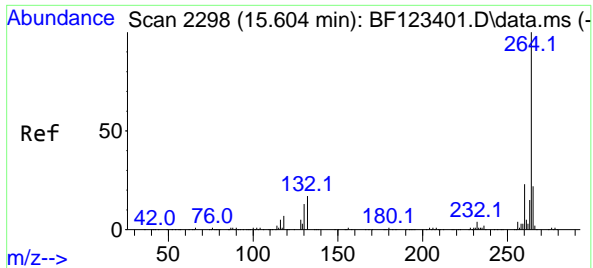


#79
 Terphenyl-d14
 Concen: 59.00 ng
 RT: 13.016 min Scan# 1858
 Delta R.T. -0.000 min
 Lab File: BF123527.D
 Acq: 30 Mar 2021 18:14



Tgt Ion:244 Resp: 2873482
 Ion Ratio Lower Upper
 244 100
 212 7.6 5.7 8.5
 122 10.5 8.3 12.5





#86
 Perylene-d12
 Concen: 20.00 ng
 RT: 15.557 min Scan# 2290
 Delta R.T. -0.012 min
 Lab File: BF123527.D
 Acq: 30 Mar 2021 18:14

Instrument :
 BNA_F
ClientSampled :
 EL-509-STREET-LEVEL

Tgt Ion:264 Resp: 555520

Ion	Ratio	Lower	Upper
264	100		
260	21.2	18.6	28.0
265	21.6	17.0	25.6

