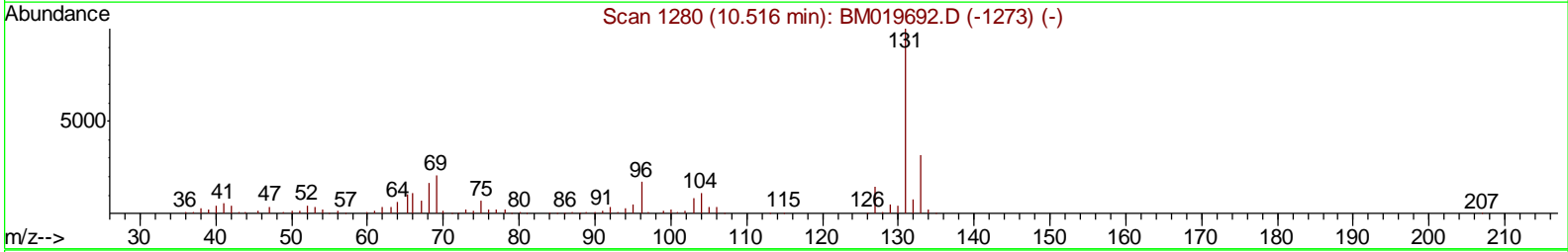
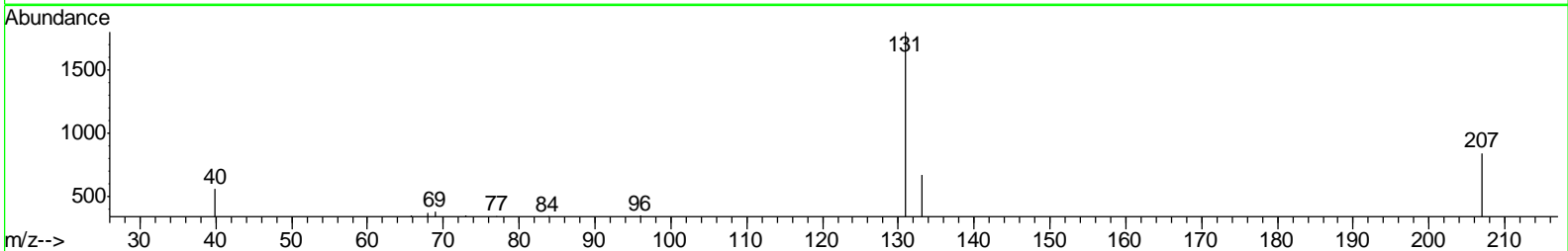
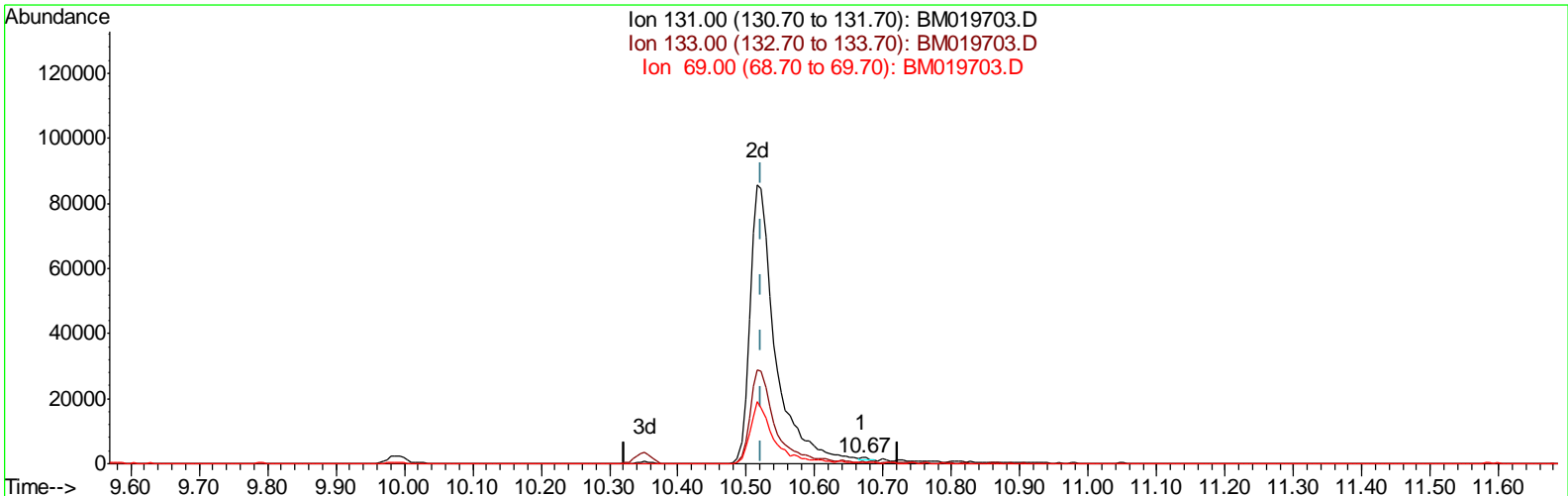


Data Path : Z:\SVOASRV\HPCHEM1\BNA_M\DATA\BM040219\
 Data File : BM019703.D
 Acq On : 02 Apr 2019 22:16
 Operator : JU/SJ
 Sample : K2148-22
 Misc :
 ALS Vial : 13 Sample Multiplier: 1

Quant Time: Apr 03 01:22:27 2019
 Quant Method : Z:\SVOASRV\HPCHEM1\BNA_M\METHODS\SOM-EPA-BM032219MA.M
 Quant Title : SVOA CALIBRATION
 QLast Update : Wed Apr 03 01:13:19 2019
 Response via : Initial Calibration



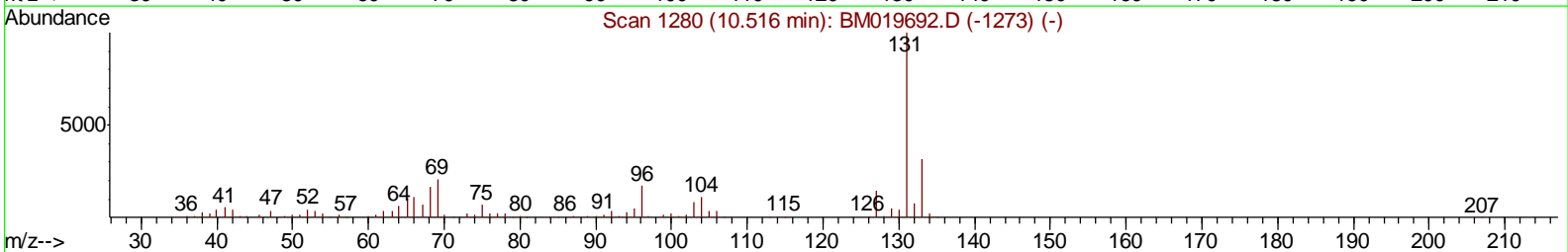
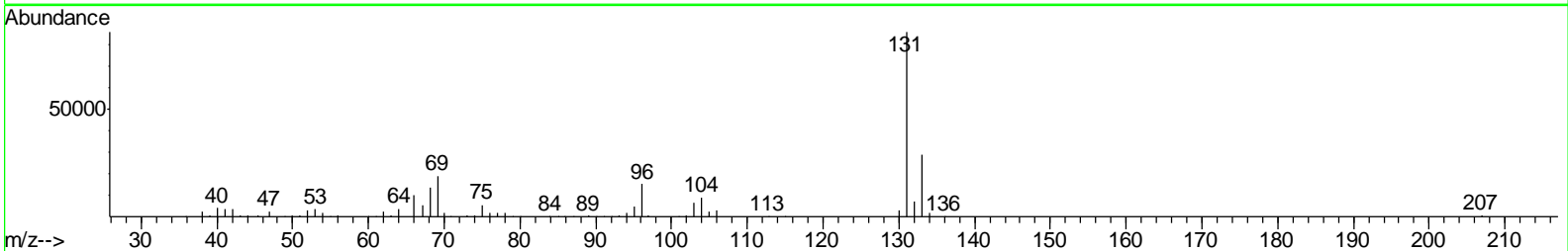
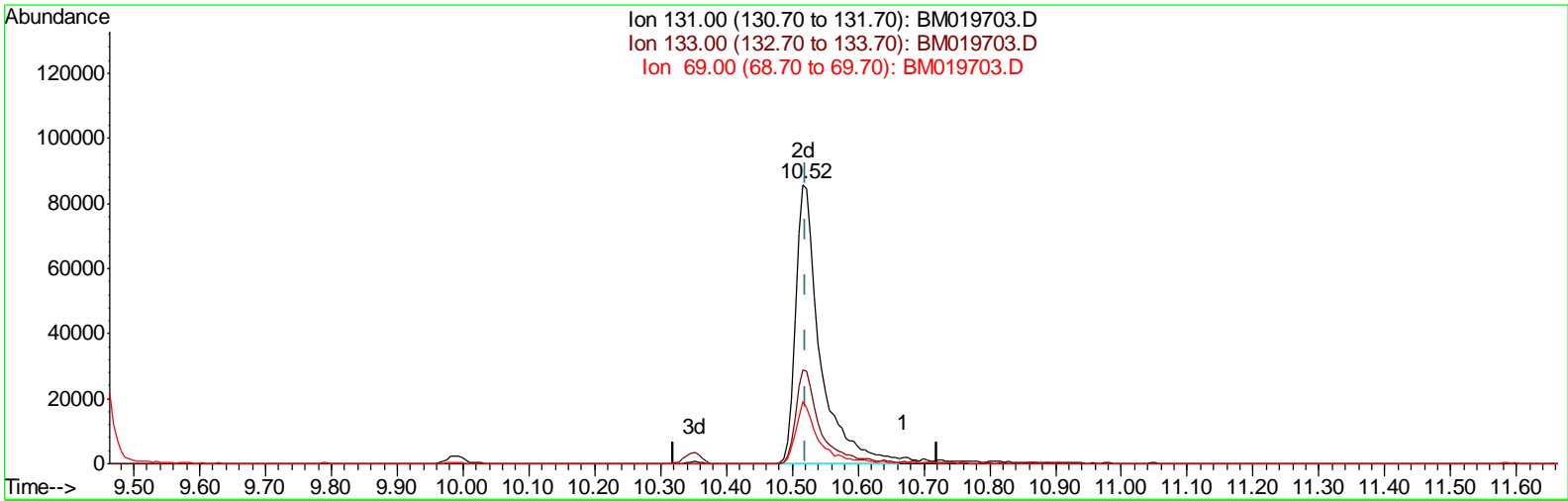
TIC: BM019703.D

(29) 4-Chloroaniline-d4 (S)
 10.669min (+0.148) 0.03ng/ul
 response 469

Ion	Exp%	Act%
131.00	100	100
133.00	33.90	37.21
69.00	18.60	20.86
0.00	0.00	0.00

Data Path : Z:\SVOASRV\HPCHEM1\BNA_M\DATA\BM040219\
 Data File : BM019703.D
 Acq On : 02 Apr 2019 22:16
 Operator : JU/SJ
 Sample : K2148-22
 Misc :
 ALS Vial : 13 Sample Multiplier: 1

Quant Time: Apr 03 01:22:27 2019
 Quant Method : Z:\SVOASRV\HPCHEM1\BNA_M\METHODS\SOM-EPA-BM032219MA.M
 Quant Title : SVOA CALIBRATION
 QLast Update : Wed Apr 03 01:13:19 2019
 Response via : Initial Calibration



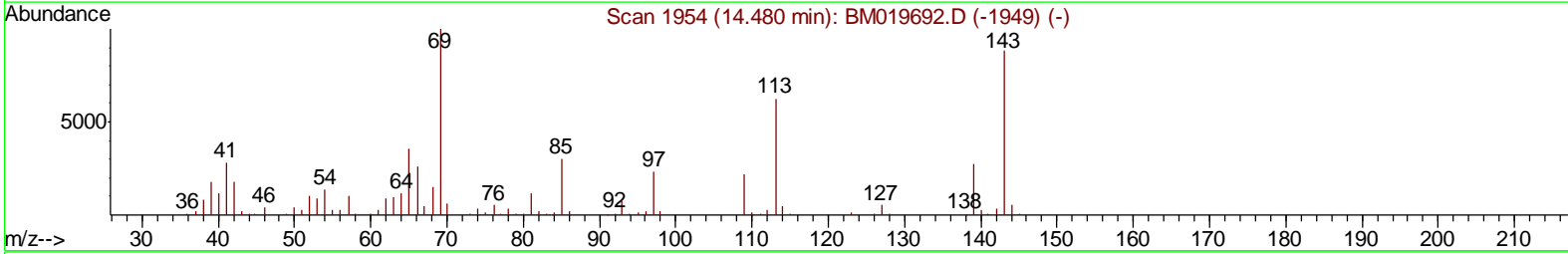
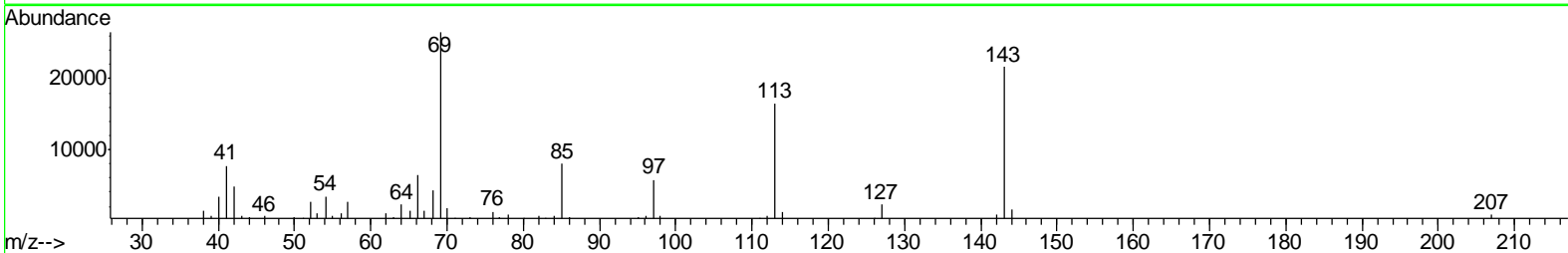
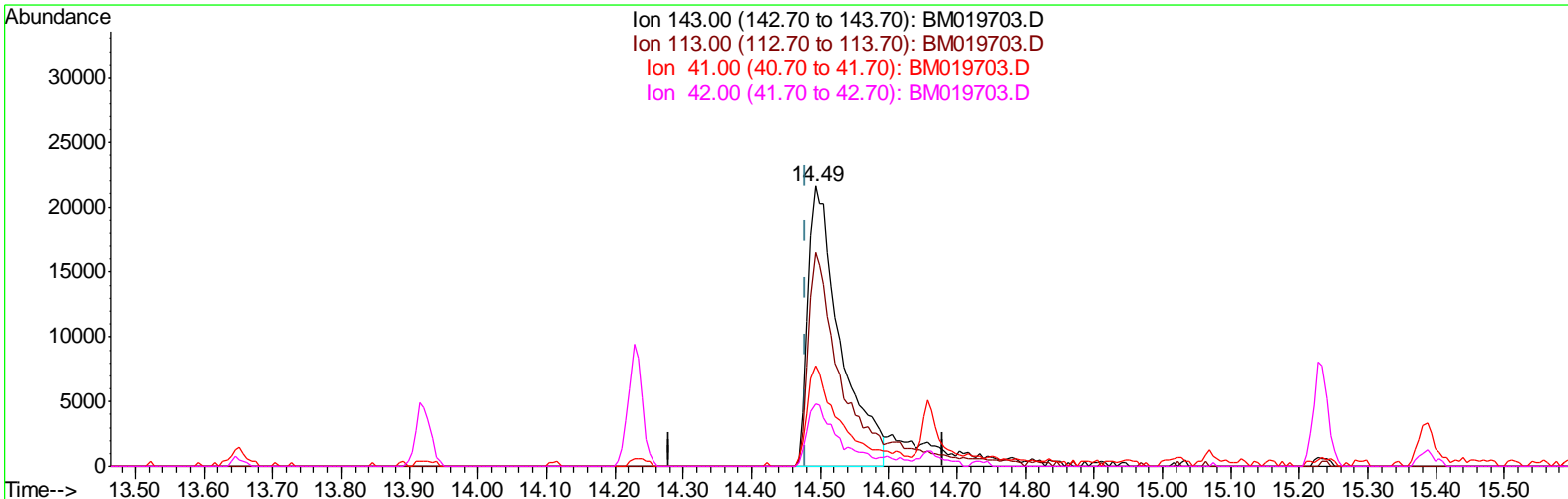
TIC: BM019703.D

(29) 4-Chloroaniline-d4 (S)
 10.516min (-0.005) 16.38ng/ul m
 response 223625

Ion	Exp%	Act%
131.00	100	100
133.00	33.90	33.84
69.00	18.60	22.42#
0.00	0.00	0.00

Data Path : Z:\SVOASRV\HPCHEM1\BNA_M\DATA\BM040219\
 Data File : BM019703.D
 Acq On : 02 Apr 2019 22:16
 Operator : JU/SJ
 Sample : K2148-22
 Misc :
 ALS Vial : 13 Sample Multiplier: 1

Quant Time: Apr 03 01:22:27 2019
 Quant Method : Z:\SVOASRV\HPCHEM1\BNA_M\METHODS\SOM-EPA-BM032219MA.M
 Quant Title : SVOA CALIBRATION
 QLast Update : Wed Apr 03 01:13:19 2019
 Response via : Initial Calibration



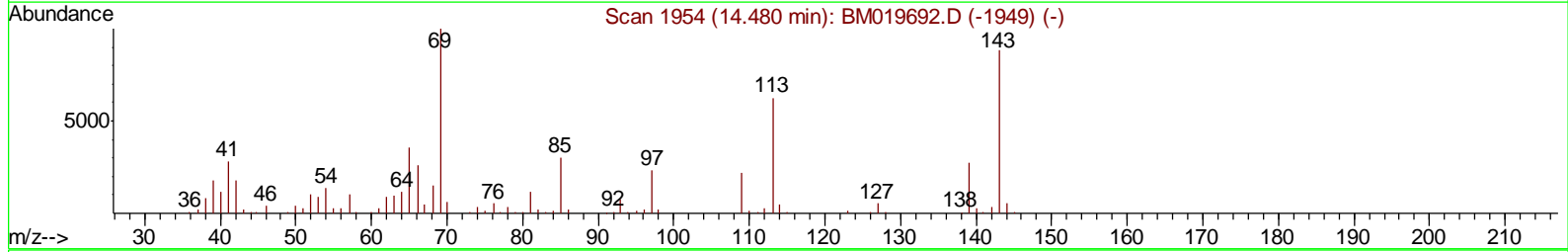
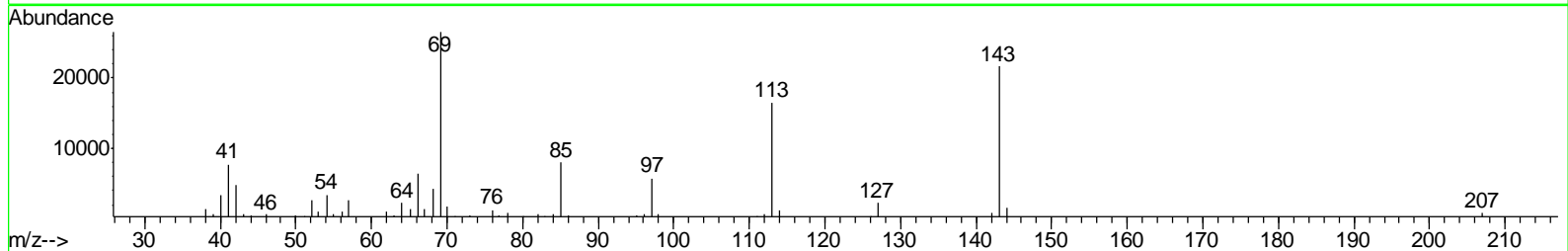
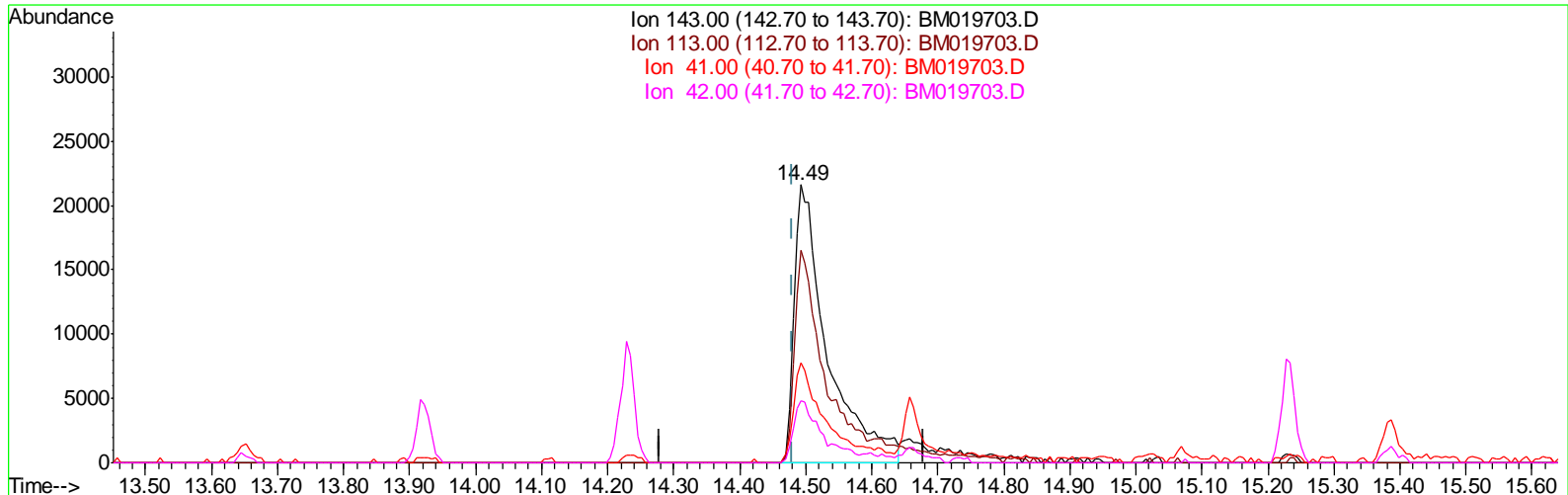
TIC: BM019703.D

(52) 4-Nitrophenol-d4 (S)
 14.492min (+0.012) 12.10ng/ul
 response 70253

Ion	Exp%	Act%
143.00	100	100
113.00	77.10	76.55
41.00	32.60	35.70
42.00	22.30	22.16

Data Path : Z:\SVOASRV\HPCHEM1\BNA_M\DATA\BM040219\
 Data File : BM019703.D
 Acq On : 02 Apr 2019 22:16
 Operator : JU/SJ
 Sample : K2148-22
 Misc :
 ALS Vial : 13 Sample Multiplier: 1

Quant Time: Apr 03 01:22:27 2019
 Quant Method : Z:\SVOASRV\HPCHEM1\BNA_M\METHODS\SOM-EPA-BM032219MA.M
 Quant Title : SVOA CALIBRATION
 QLast Update : Wed Apr 03 01:13:19 2019
 Response via : Initial Calibration



TIC: BM019703.D

(52) 4-Nitrophenol-d4 (S)
 14.492min (+0.012) 13.06ng/ul m
 response 75832

Ion	Exp%	Act%
143.00	100	100
113.00	77.10	76.55
41.00	32.60	35.70
42.00	22.30	22.16

Data Path : Z:\SVOASRV\HPCHEM1\BNA_M\DATA\BM040219\
 Data File : BM019703.D
 Acq On : 02 Apr 2019 22:16
 Operator : JU/SJ
 Sample : K2148-22
 Misc :
 ALS Vial : 13 Sample Multiplier: 1

Quant Time: Apr 03 04:32:05 2019

Quant Method : Z:\SVOASRV\HPCHEM1\BNA_M\METHODS\SOM-EPA-BM032219MA.M

Quant Title : SVOA CALIBRATION

QLast Update : Wed Apr 03 01:13:19 2019

Response via : Initial Calibration

Internal Standards	R.T.	QIon	Response	Conc	Units	Dev(Min)
1) 1,4-Dichlorobenzene-d4	7.57	152	164904	20.00	ng/ul	-0.01
18) Naphthalene-d8	10.35	136	758663	20.00	ng/ul	-0.01
36) Acenaphthene-d10	14.23	164	458942	20.00	ng/ul	-0.01
62) Phenanthrene-d10	16.99	188	1037332	20.00	ng/ul	0.00
78) Chrysene-d12	21.20	240	1096553	20.00	ng/ul	0.00
86) Perylene-d12	23.40	264	1132496	20.00	ng/ul	0.00

System Monitoring Compounds

3) 1,4-Dioxane-d8	3.12	96	21363	5.07	ng/uL	0.00
5) Phenol-d5	6.76	99	209867	14.29	ng/ul	0.00
7) Bis-(2-Chloroethyl)ether-d	6.92	67	145546	14.80	ng/ul	-0.01
9) 2-Chlorophenol-d4	7.10	132	170096	15.28	ng/ul	0.00
13) 4-Methylphenol-d8	8.29	113	164420	14.92	ng/ul	0.00
19) Nitrobenzene-d5	8.74	128	83672	15.46	ng/ul	-0.01
22) 2-Nitrophenol-d4	9.45	143	98846	16.41	ng/ul	-0.01
26) 2,4-Dichlorophenol-d3	9.99	165	159701	14.05	ng/ul	0.00
29) 4-Chloroaniline-d4	10.52	131	223625m	16.38	ng/ul	0.00
44) Dimethylphthalate-d6	13.65	166	644180	17.40	ng/ul	-0.01
47) Acenaphthylene-d8	13.92	160	707598	15.28	ng/ul	-0.01
52) 4-Nitrophenol-d4	14.49	143	75832m	13.06	ng/ul	0.01
58) Fluorene-d10	15.23	176	514854	16.14	ng/ul	0.00
63) 4,6-Dinitro-2-methylphenol	15.39	200	76987	11.22	ng/ul	0.00
71) Anthracene-d10	17.09	188	822793	16.53	ng/ul	0.00
79) Pyrene-d10	19.40	212	865135	17.08	ng/ul	0.00
90) Benzo(a)pyrene-d12	23.26	264	898068	14.96	ng/ul	0.00

Target Compounds

					Qvalue
45) Dimethylphthalate	13.70	163	123160	3.315 ng/ul	99
81) Butylbenzylphthalate	20.33	149	66208	2.535 ng/ul#	82

(#) = qualifier out of range (m) = manual integration (+) = signals summed

Data Path : Z:\SVOASRV\HPCHEM1\BNA_M\DATA\BM040219\
 Data File : BM019703.D
 Acq On : 02 Apr 2019 22:16
 Operator : JU/SJ
 Sample : K2148-22
 Misc :
 ALS Vial : 13 Sample Multiplier: 1

Quant Time: Apr 03 04:32:05 2019
 Quant Method : Z:\SVOASRV\HPCHEM1\BNA_M\METHODS\SOM-EPA-BM032219MA.M
 Quant Title : SVOA CALIBRATION
 QLast Update : Wed Apr 03 01:13:19 2019
 Response via : Initial Calibration

