

Data Path : Z:\SVOASRV\HPCHEM1\BNA F\DATA\BF040820\
 Data File : BF119850.D
 Acq On : 9 Apr 2020 3:35
 Operator : MA/SJ
 Sample : L2151-06
 Misc :
 ALS Vial : 18 Sample Multiplier: 1

Instrument :
 BNA_F
 ClientSampleId :

Quant Time: Apr 09 04:33:59 2020
 Quant Method : Z:\SVOASRV\HPCHEM1\BNA F\METHODS\8270-BF040820.M
 Quant Title : ASP BNA STANDARDS FOR 5 POINT CALIBRATION
 QLast Update : Thu Apr 09 01:21:19 2020
 Response via : Initial Calibration

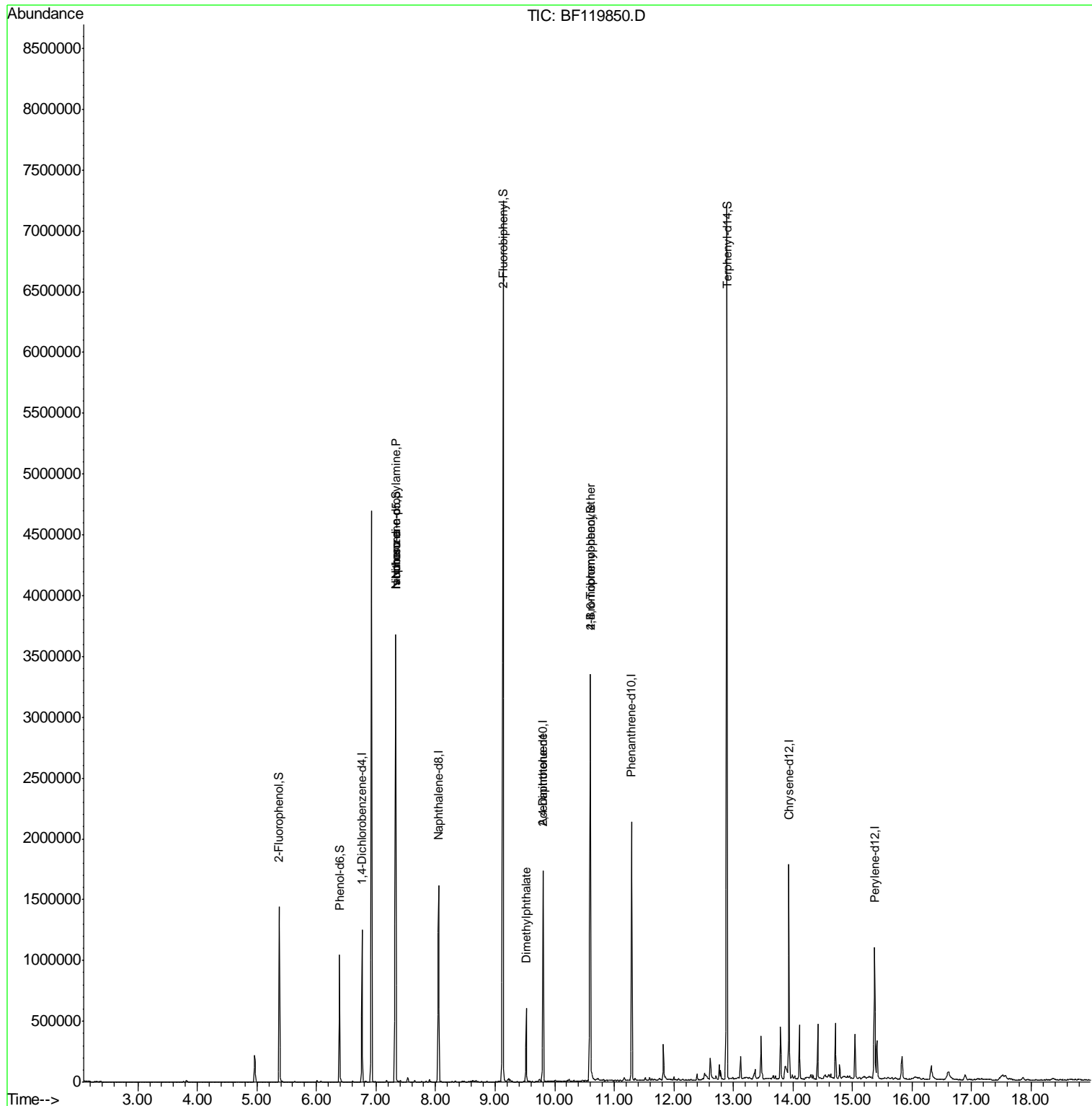
| Internal Standards | R.T. | QIon | Response | Conc | Units | Dev(Min) |
|--------------------------------|-------|------|----------|-----------|-------|-------------|
| 1) 1,4-Dichlorobenzene-d4 | 6.76 | 152 | 189450 | 20.00 | ng | 0.00 |
| 21) Naphthalene-d8 | 8.05 | 136 | 741065 | 20.00 | ng | 0.00 |
| 39) Acenaphthene-d10 | 9.81 | 164 | 392627 | 20.00 | ng | 0.00 |
| 64) Phenanthrene-d10 | 11.29 | 188 | 795637 | 20.00 | ng | 0.00 |
| 76) Chrysene-d12 | 13.93 | 240 | 599182 | 20.00 | ng | 0.00 |
| 87) Perylene-d12 | 15.37 | 264 | 521948 | 20.00 | ng | 0.00 |
| System Monitoring Compounds | | | | | | |
| 5) 2-Fluorophenol | 5.38 | 112 | 362814 | 33.10 | ng | 0.00 |
| 7) Phenol-d6 | 6.39 | 99 | 304754 | 21.57 | ng | -0.02 |
| 23) Nitrobenzene-d5 | 7.33 | 82 | 1317801 | 92.00 | ng | 0.00 |
| 42) 2,4,6-Tribromophenol | 10.60 | 330 | 433923 | 90.27 | ng | 0.00 |
| 45) 2-Fluorobiphenyl | 9.13 | 172 | 2686805 | 97.16 | ng | 0.00 |
| 79) Terphenyl-d14 | 12.89 | 244 | 3031886 | 85.14 | ng | 0.00 |
| Target Compounds | | | | | | |
| 9) Benzaldehyde | 6.31 | 77 | 270 | Below Cal | | Qvalue # 50 |
| 19) n-Nitroso-di-n-propylamine | 7.33 | 70 | 176403 | 19.420 | ng | # 75 |
| 25) Isophorone | 7.33 | 82 | 1305122 | 47.264 | ng | # 65 |
| 50) Dimethylphthalate | 9.52 | 163 | 232335 | 7.650 | ng | 98 |
| 57) 2,4-Dinitrotoluene | 9.80 | 165 | 49605 | 5.661 | ng | # 23 |
| 67) 4-Bromophenyl-phenylether | 10.60 | 248 | 25555 | 2.583 | ng | # 1 |

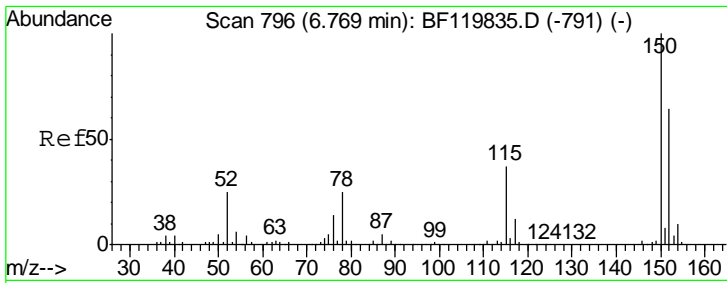
(#) = qualifier out of range (m) = manual integration (+) = signals summed

Data Path : Z:\SVOASRV\HPCHEM1\BNA F\DATA\BF040820\
 Data File : BF119850.D
 Acq On : 9 Apr 2020 3:35
 Operator : MA/SJ
 Sample : L2151-06
 Misc :
 ALS Vial : 18 Sample Multiplier: 1

Instrument :
 BNA_F
 ClientSampled :

Quant Time: Apr 09 04:33:59 2020
 Quant Method : Z:\SVOASRV\HPCHEM1\BNA F\METHODS\8270-BF040820.M
 Quant Title : ASP BNA STANDARDS FOR 5 POINT CALIBRATION
 QLast Update : Thu Apr 09 01:21:19 2020
 Response via : Initial Calibration

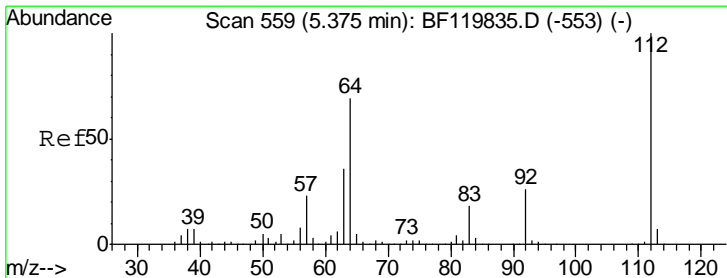
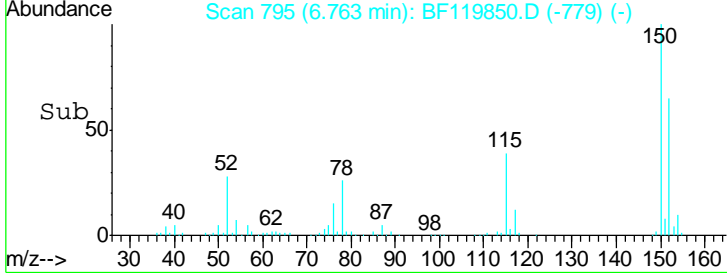
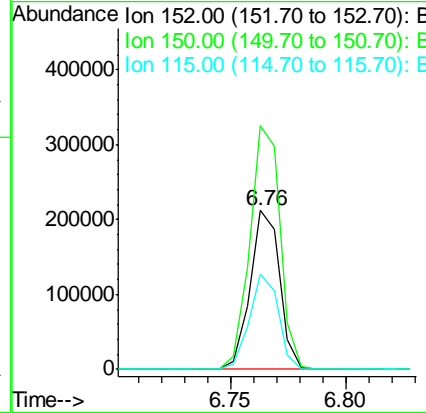
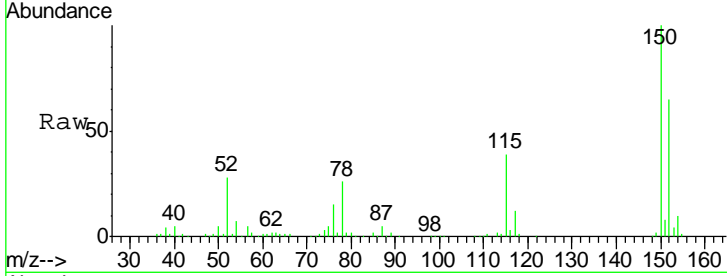




#1
 1,4-Dichlorobenzene-d4
 Concen: 20.000 ng
 RT: 6.76 min Scan# 795
 Delta R.T. -0.01 min
 Lab File: BF119850.D
 Acq: 9 Apr 2020 3:35

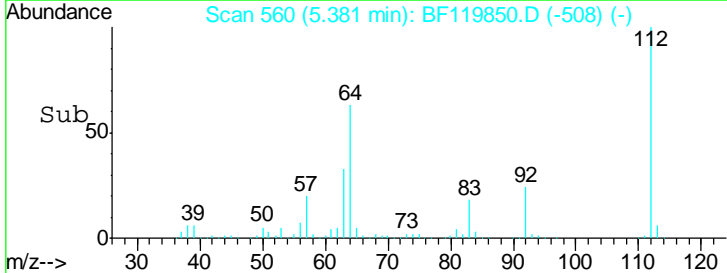
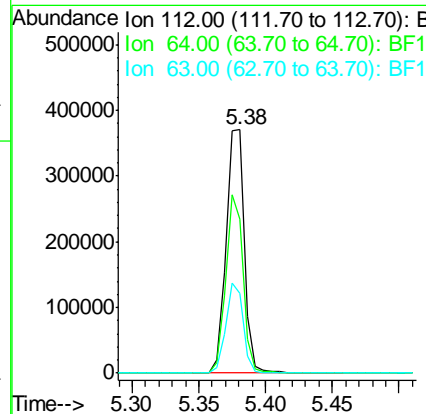
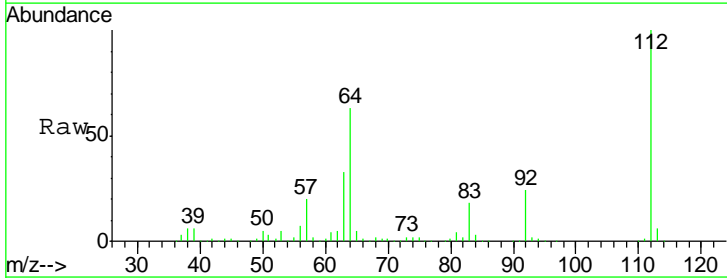
Instrument :
 BNA_F
 ClientSampled :

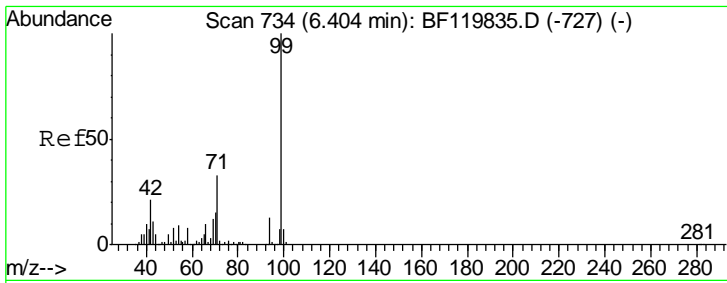
| Tgt Ion | Resp | Lower | Upper |
|---------|--------|-------|-------|
| 152 | 189450 | | |
| 150 | 153.3 | 124.8 | 187.2 |
| 115 | 60.1 | 46.5 | 69.7 |



#5
 2-Fluorophenol
 Concen: 33.096 ng
 RT: 5.38 min Scan# 560
 Delta R.T. 0.01 min
 Lab File: BF119850.D
 Acq: 9 Apr 2020 3:35

| Tgt Ion | Resp | Lower | Upper |
|---------|--------|-------|-------|
| 112 | 362814 | | |
| 64 | 63.1 | 55.5 | 83.3 |
| 63 | 33.0 | 29.1 | 43.7 |

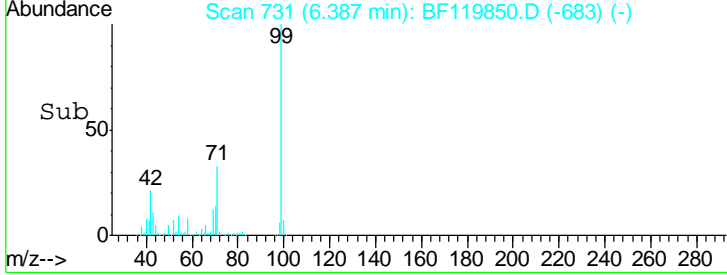
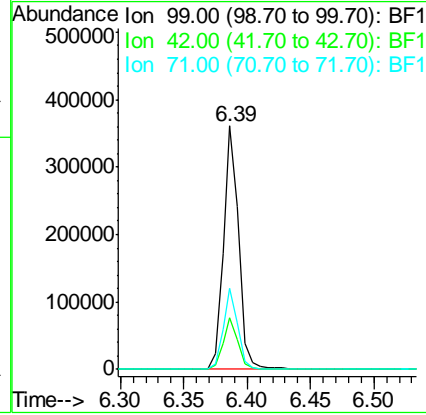
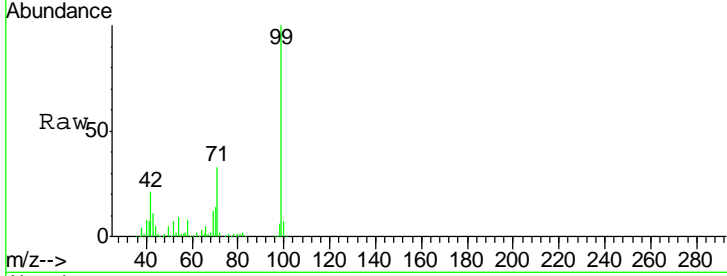




#7
 Phenol-d6
 Concen: 21.575 ng
 RT: 6.39 min Scan# 731
 Delta R.T. -0.02 min
 Lab File: BF119850.D
 Acq: 9 Apr 2020 3:35

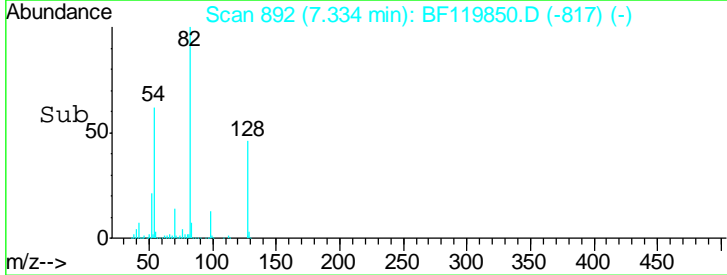
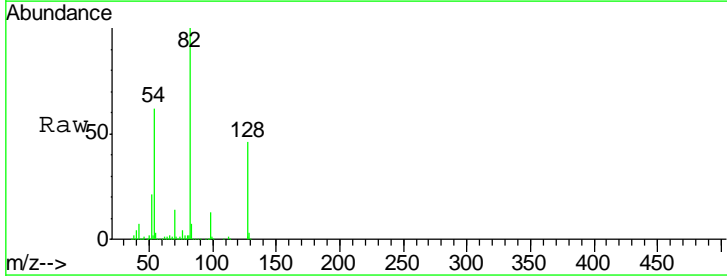
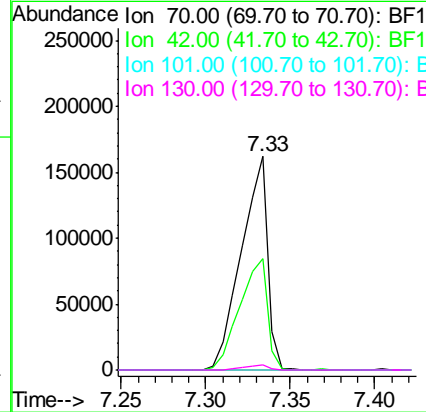
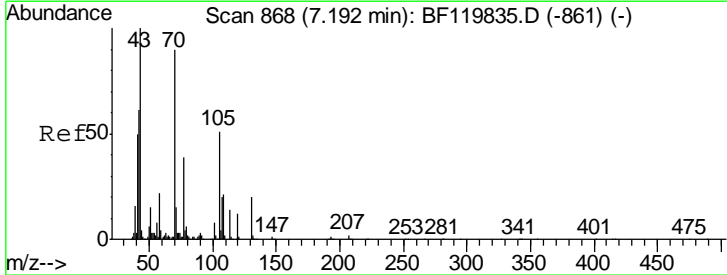
Instrument :
 BNA_F
 ClientSampled :

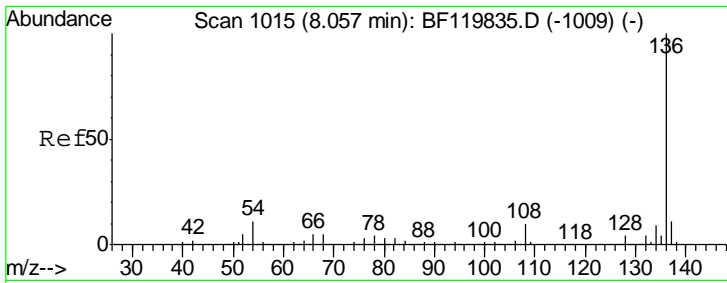
| Tgt Ion | Resp | Lower | Upper |
|---------|------|-------|-------|
| 99 | 100 | | |
| 42 | 21.3 | 16.9 | 25.3 |
| 71 | 33.3 | 26.3 | 39.5 |



#19
 n-Nitroso-di-n-propylamine
 Concen: 19.420 ng
 RT: 7.33 min Scan# 892
 Delta R.T. 0.14 min
 Lab File: BF119850.D
 Acq: 9 Apr 2020 3:35

| Tgt Ion | Resp | Lower | Upper |
|---------|------|-------|-------|
| 70 | 100 | | |
| 42 | 52.1 | 54.2 | 81.4# |
| 101 | 0.0 | 7.4 | 11.2# |
| 130 | 2.7 | 17.8 | 26.6# |



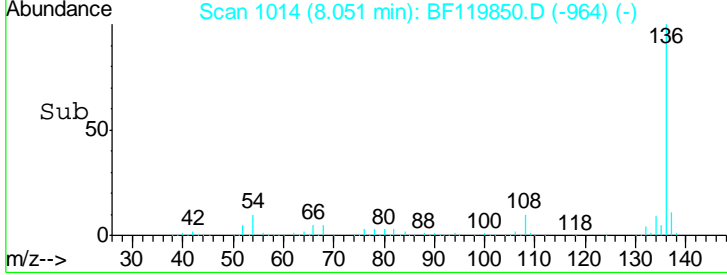
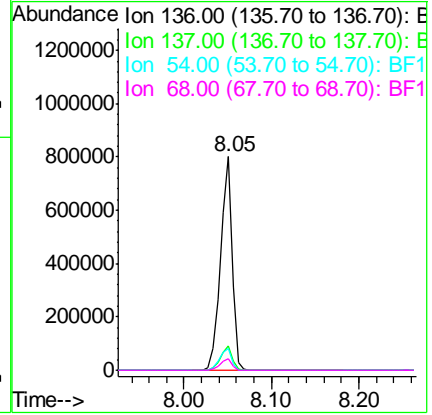
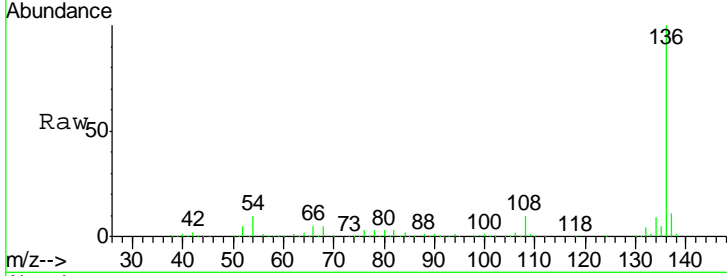


#21
 Naphthalene-d8
 Concen: 20.000 ng
 RT: 8.05 min Scan# 1014
 Delta R.T. -0.01 min
 Lab File: BF119850.D
 Acq: 9 Apr 2020 3:35

Instrument :
 BNA_F
 ClientSampled :

Tgt Ion: 136 Resp: 741065

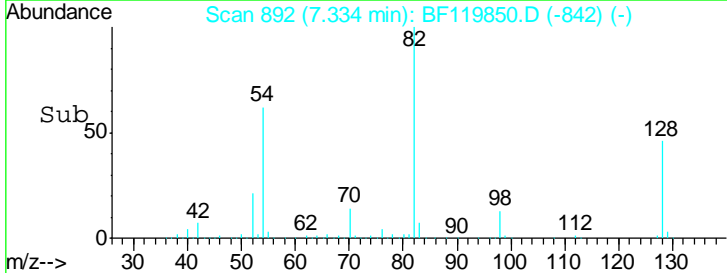
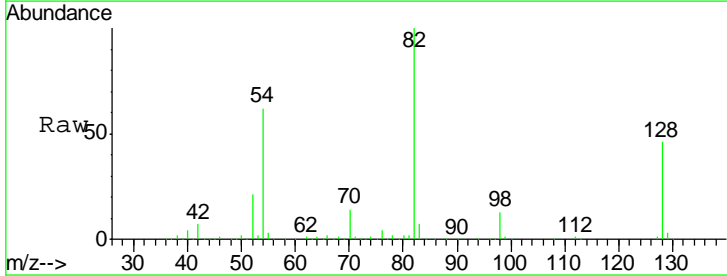
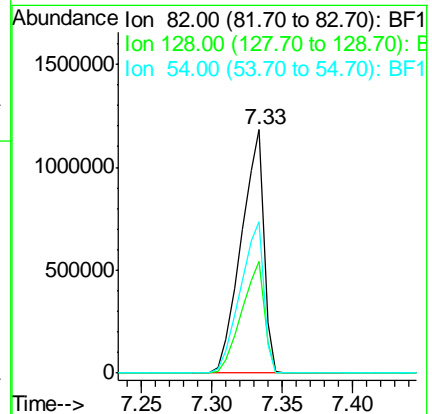
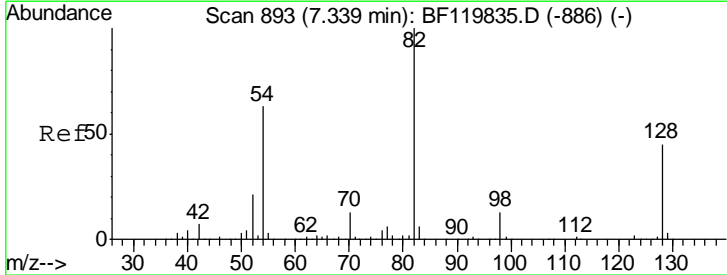
| Ion | Ratio | Lower | Upper |
|-----|-------|-------|-------|
| 136 | 100 | | |
| 137 | 11.3 | 8.7 | 13.1 |
| 54 | 10.2 | 8.5 | 12.7 |
| 68 | 5.4 | 3.9 | 5.9 |

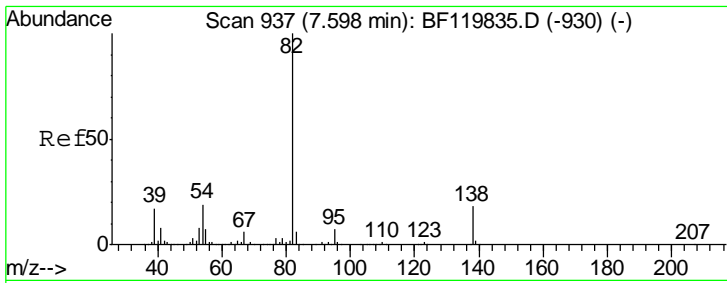


#23
 Nitrobenzene-d5
 Concen: 91.995 ng
 RT: 7.33 min Scan# 892
 Delta R.T. -0.01 min
 Lab File: BF119850.D
 Acq: 9 Apr 2020 3:35

Tgt Ion: 82 Resp: 1317801

| Ion | Ratio | Lower | Upper |
|-----|-------|-------|-------|
| 82 | 100 | | |
| 128 | 45.8 | 36.2 | 54.4 |
| 54 | 62.4 | 50.4 | 75.6 |

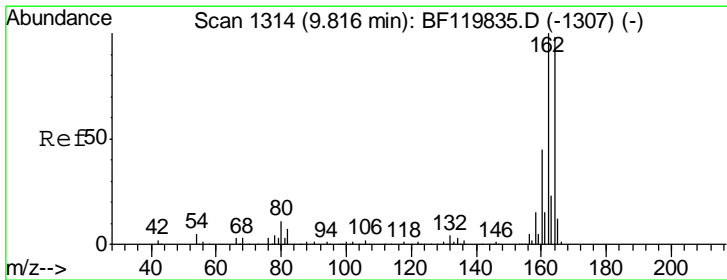
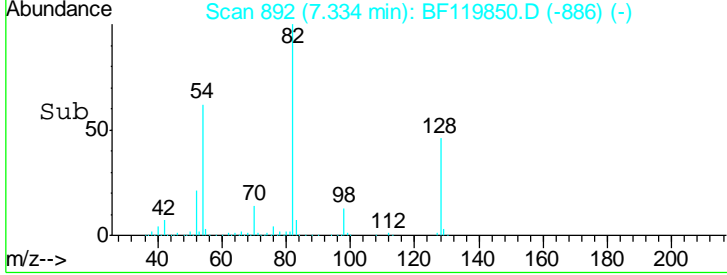
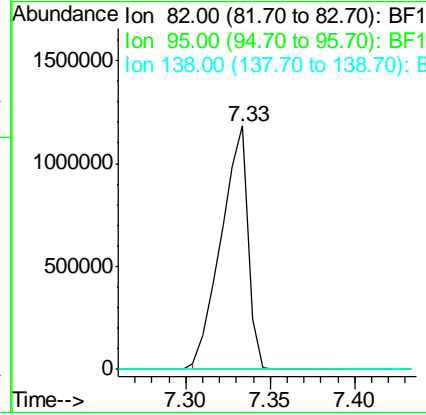
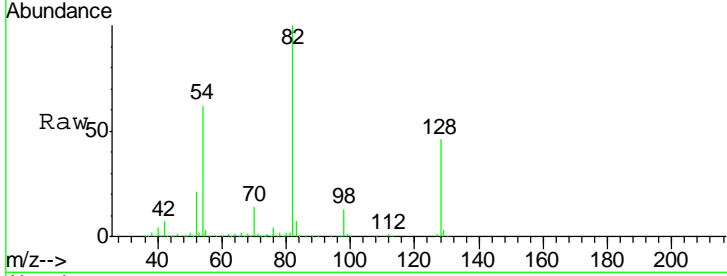




#25
 Isophorone
 Concen: 47.264 ng
 RT: 7.33 min Scan# 892
 Delta R.T. -0.26 min
 Lab File: BF119850.D
 Acq: 9 Apr 2020 3:35

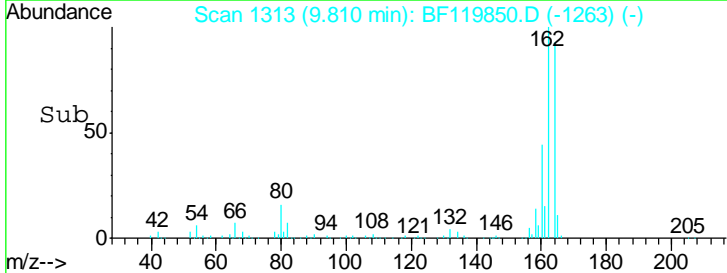
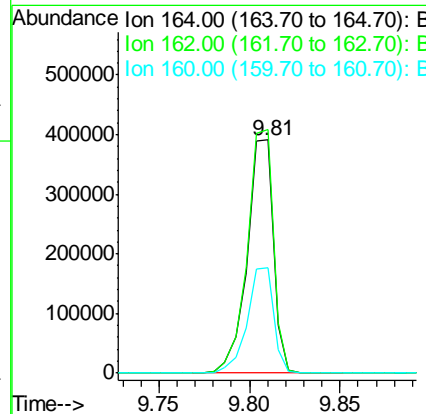
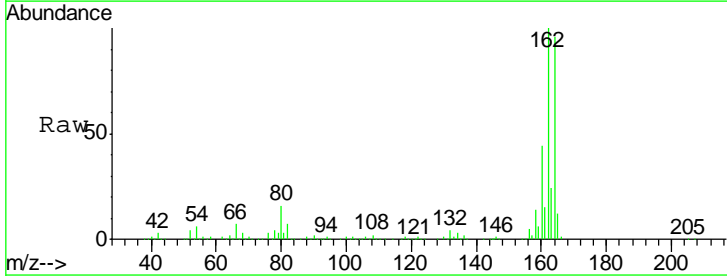
Instrument :
 BNA_F
 ClientSampleId :

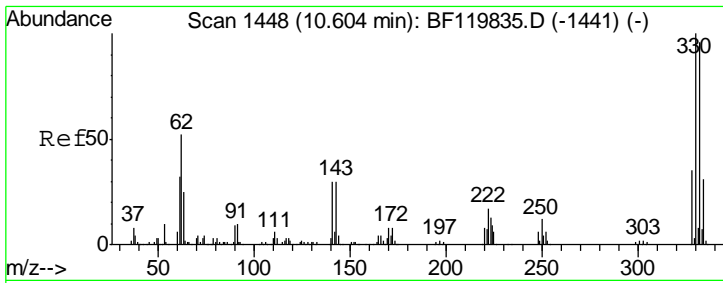
| Tgt Ion | Resp | Lower | Upper |
|---------|------|-------|-------|
| 82 | 100 | | |
| 95 | 0.0 | 5.8 | 8.6# |
| 138 | 0.0 | 14.5 | 21.7# |



#39
 Acenaphthene-d10
 Concen: 20.000 ng
 RT: 9.81 min Scan# 1313
 Delta R.T. -0.01 min
 Lab File: BF119850.D
 Acq: 9 Apr 2020 3:35

| Tgt Ion | Resp | Lower | Upper |
|---------|-------|-------|-------|
| 164 | 100 | | |
| 162 | 104.5 | 81.9 | 122.9 |
| 160 | 45.5 | 36.6 | 54.8 |

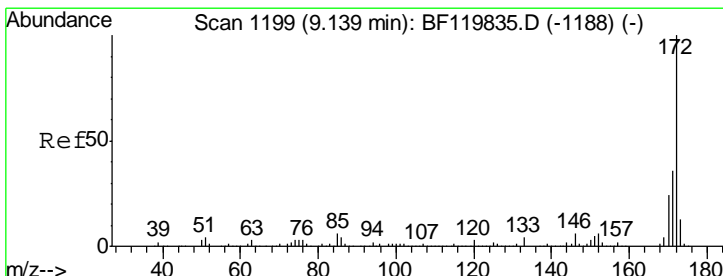
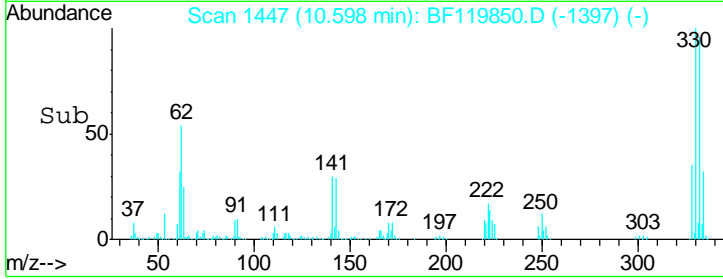
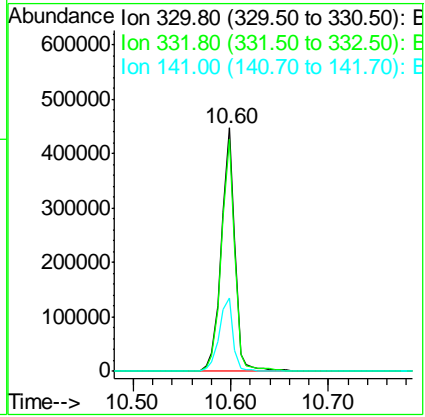
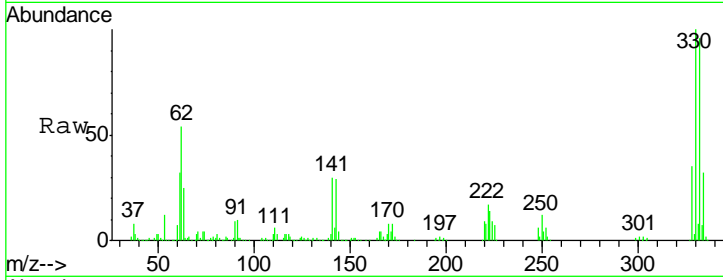




#42
 2,4,6-Tribromophenol
 Concen: 90.267 ng
 RT: 10.60 min Scan# 1447
 Delta R.T. -0.01 min
 Lab File: BF119850.D
 Acq: 9 Apr 2020 3:35

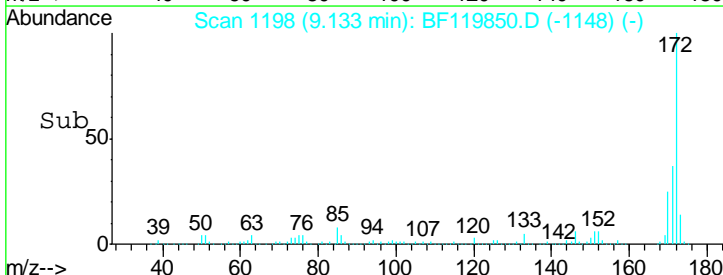
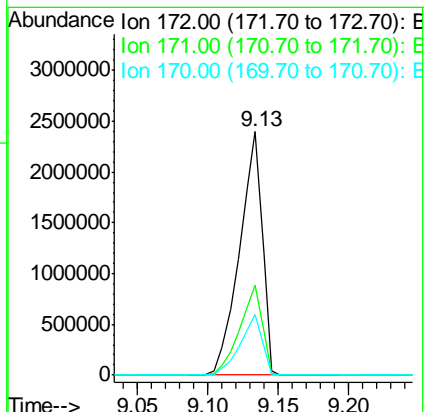
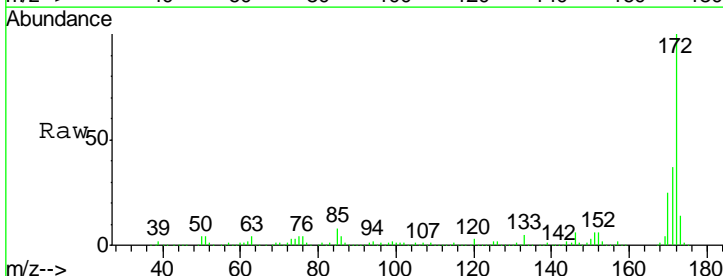
Instrument :
 BNA_F
 ClientSampled :

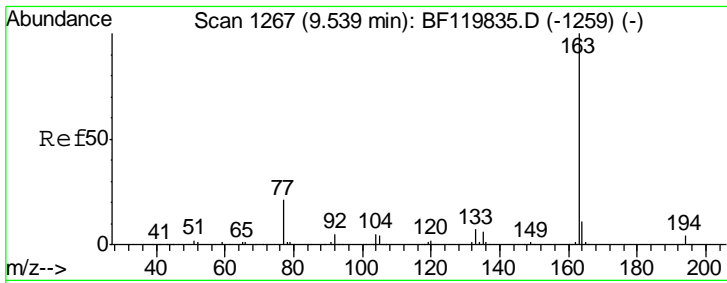
| Tgt Ion | Resp | Lower | Upper |
|---------|------|-------|-------|
| 330 | 100 | | |
| 332 | 95.2 | 76.8 | 115.2 |
| 141 | 31.5 | 25.1 | 37.7 |



#45
 2-Fluorobiphenyl
 Concen: 97.158 ng
 RT: 9.13 min Scan# 1198
 Delta R.T. -0.01 min
 Lab File: BF119850.D
 Acq: 9 Apr 2020 3:35

| Tgt Ion | Resp | Lower | Upper |
|---------|------|-------|-------|
| 172 | 100 | | |
| 171 | 37.2 | 28.9 | 43.3 |
| 170 | 24.7 | 19.4 | 29.2 |

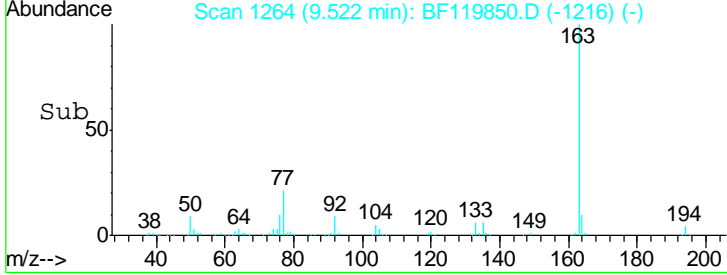
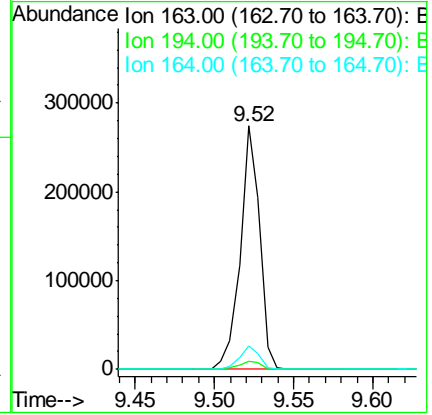
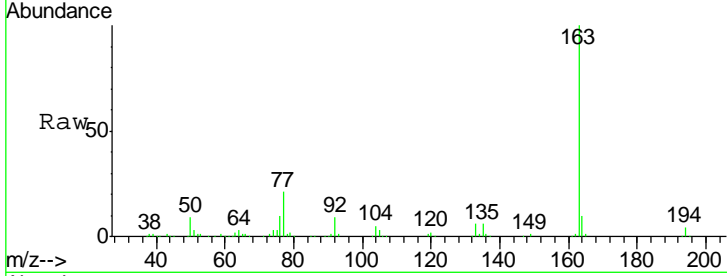




#50
 Dimethylphthalate
 Concen: 7.650 ng
 RT: 9.52 min Scan# 1264
 Delta R.T. -0.02 min
 Lab File: BF119850.D
 Acq: 9 Apr 2020 3:35

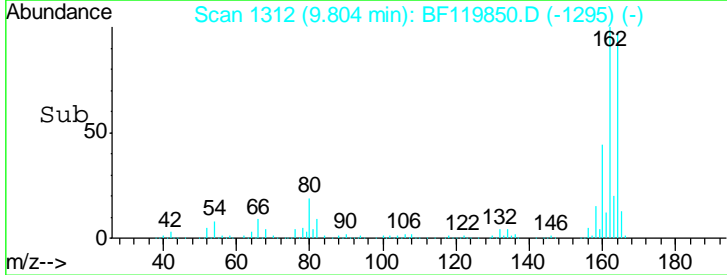
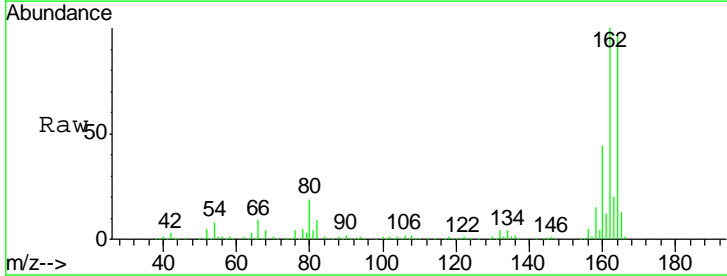
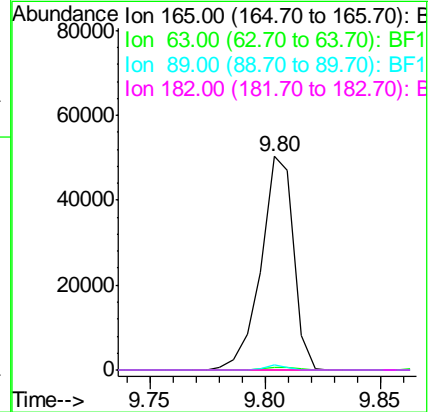
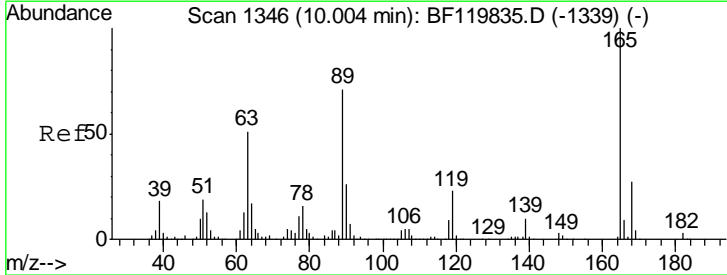
Instrument :
 BNA_F
 ClientSampled :

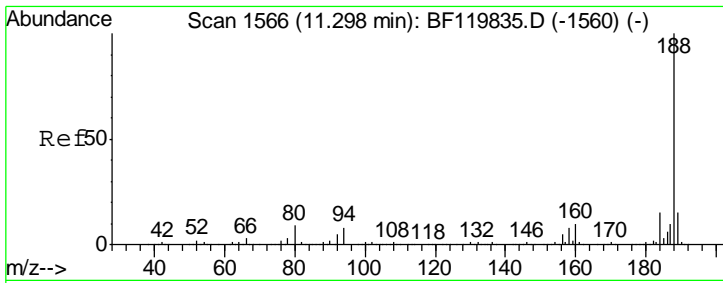
| Tgt Ion | Resp | Lower | Upper |
|---------|------|-------|-------|
| 163 | 100 | | |
| 194 | 3.5 | 3.0 | 4.4 |
| 164 | 9.8 | 8.4 | 12.6 |



#57
 2,4-Dinitrotoluene
 Concen: 5.661 ng
 RT: 9.80 min Scan# 1312
 Delta R.T. -0.20 min
 Lab File: BF119850.D
 Acq: 9 Apr 2020 3:35

| Tgt Ion | Resp | Lower | Upper |
|---------|------|-------|-------|
| 165 | 100 | | |
| 63 | 1.1 | 40.8 | 61.2# |
| 89 | 2.2 | 56.9 | 85.3# |
| 182 | 0.0 | 2.0 | 3.0# |

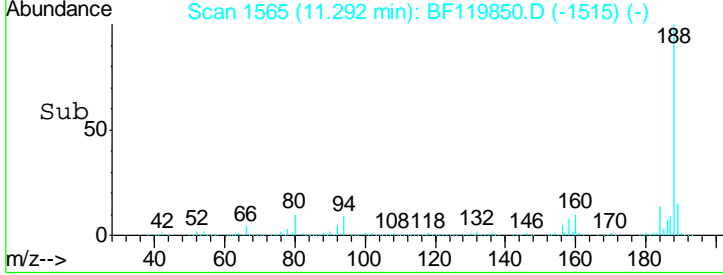
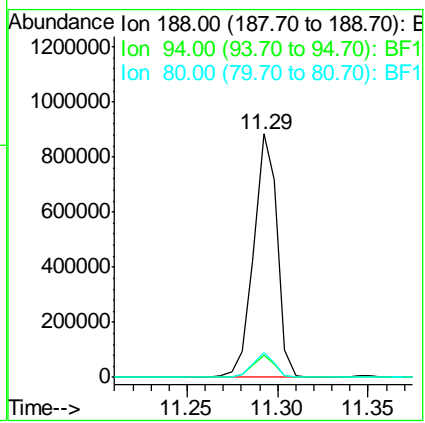
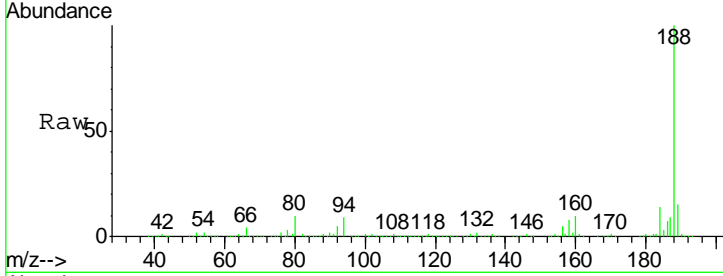




#64
 Phenanthrene-d10
 Concen: 20.000 ng
 RT: 11.29 min Scan# 1565
 Delta R.T. -0.01 min
 Lab File: BF119850.D
 Acq: 9 Apr 2020 3:35

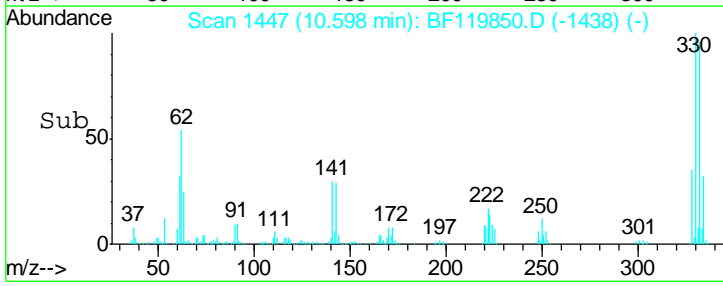
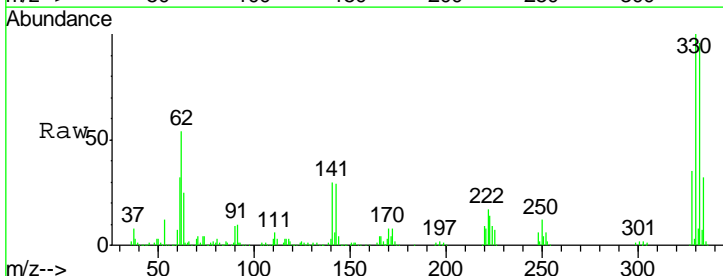
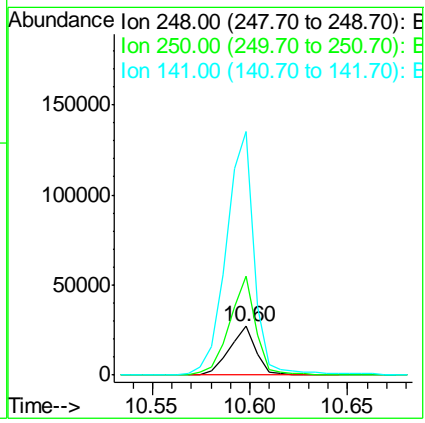
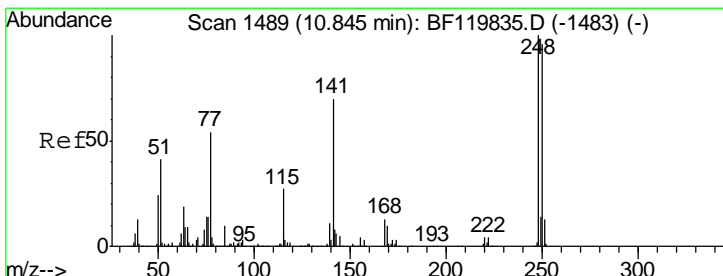
Instrument :
 BNA_F
 ClientSampled :

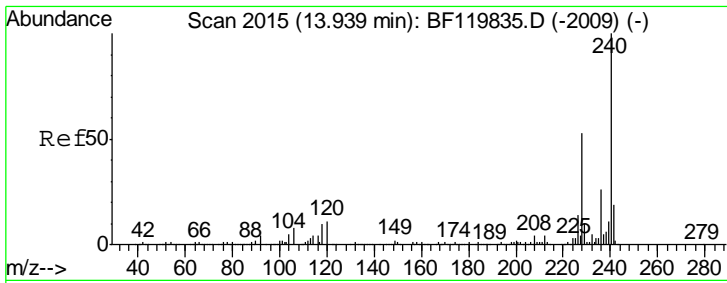
| Tgt Ion | Resp | Lower | Upper |
|---------|------|-------|-------|
| 188 | 100 | | |
| 94 | 9.1 | 6.7 | 10.1 |
| 80 | 10.0 | 7.4 | 11.2 |



#67
 4-Bromophenyl-phenylether
 Concen: 2.583 ng
 RT: 10.60 min Scan# 1447
 Delta R.T. -0.25 min
 Lab File: BF119850.D
 Acq: 9 Apr 2020 3:35

| Tgt Ion | Resp | Lower | Upper |
|---------|-------|-------|--------|
| 248 | 100 | | |
| 250 | 201.6 | 76.6 | 114.8# |
| 141 | 497.7 | 55.9 | 83.9# |

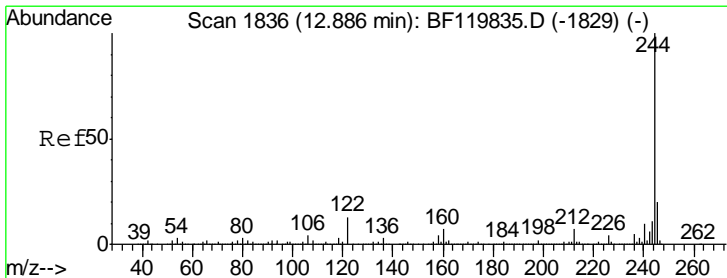
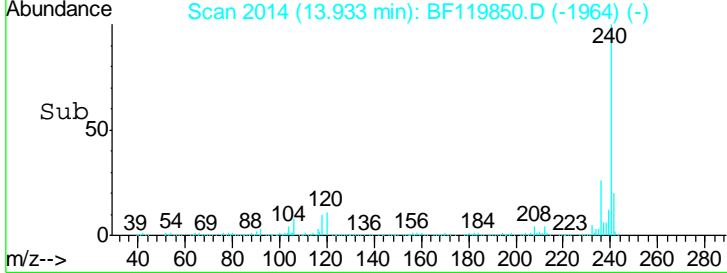
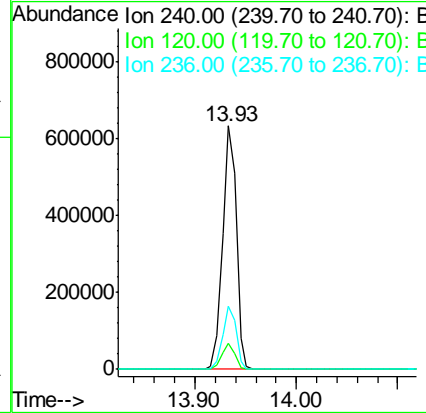
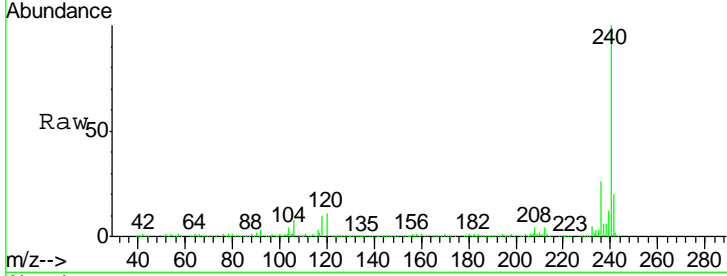




#76
 Chrysene-d12
 Concen: 20.000 ng
 RT: 13.93 min Scan# 2014
 Delta R.T. -0.01 min
 Lab File: BF119850.D
 Acq: 9 Apr 2020 3:35

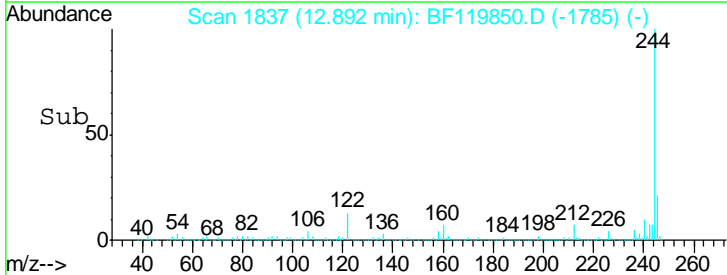
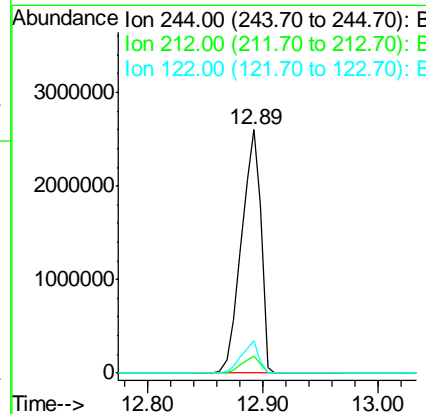
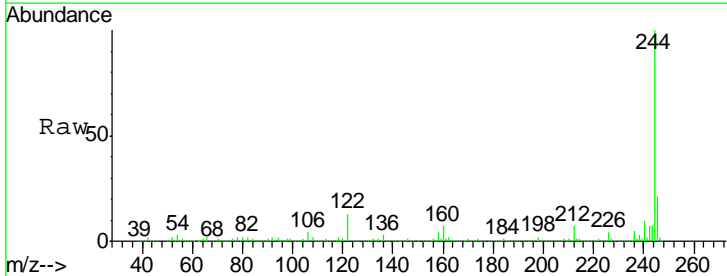
Instrument :
 BNA_F
 ClientSampled :

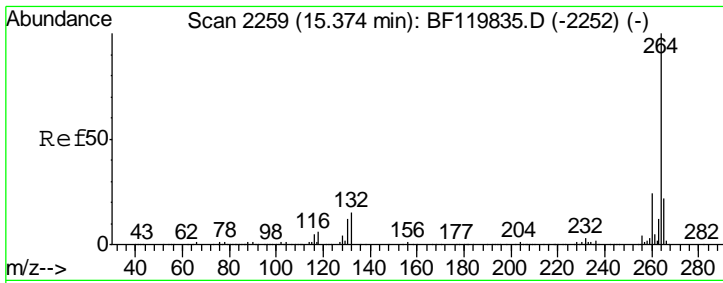
| Tgt Ion | Resp | Lower | Upper |
|---------|--------|-------|-------|
| 240 | 599182 | | |
| 120 | 10.9 | 9.0 | 13.6 |
| 236 | 26.2 | 20.7 | 31.1 |



#79
 Terphenyl-d14
 Concen: 85.143 ng
 RT: 12.89 min Scan# 1837
 Delta R.T. 0.01 min
 Lab File: BF119850.D
 Acq: 9 Apr 2020 3:35

| Tgt Ion | Resp | Lower | Upper |
|---------|---------|-------|-------|
| 244 | 3031886 | | |
| 212 | 7.0 | 5.4 | 8.0 |
| 122 | 13.4 | 10.3 | 15.5 |





#87
 Perylene-d12
 Concen: 20.000 ng
 RT: 15.37 min Scan# 2259
 Delta R.T. -0.00 min
 Lab File: BF119850.D
 Acq: 9 Apr 2020 3:35

Instrument :
 BNA_F
 ClientSampleId :

| Tot Ion | Ion | Ratio | Lower | Upper |
|---------|-----|-------|-------|-------|
| 521948 | 264 | 100 | | |
| | 260 | 24.0 | 19.3 | 28.9 |
| | 265 | 22.5 | 17.6 | 26.4 |

