

Data Path : Z:\SVOASRV\HPCHEM1\BNA F\DATA\BF040820\
 Data File : BF119875.D
 Acq On : 9 Apr 2020 17:51
 Operator : MA/SJ
 Sample : L2146-05
 Misc :
 ALS Vial : 38 Sample Multiplier: 1

Instrument :
 BNA_F
 ClientSampleId :
 TP-67-66-COMP

Quant Time: Apr 10 02:08:13 2020
 Quant Method : Z:\SVOASRV\HPCHEM1\BNA F\METHODS\8270-BF040820.M
 Quant Title : ASP BNA STANDARDS FOR 5 POINT CALIBRATION
 QLast Update : Thu Apr 09 01:21:19 2020
 Response via : Initial Calibration

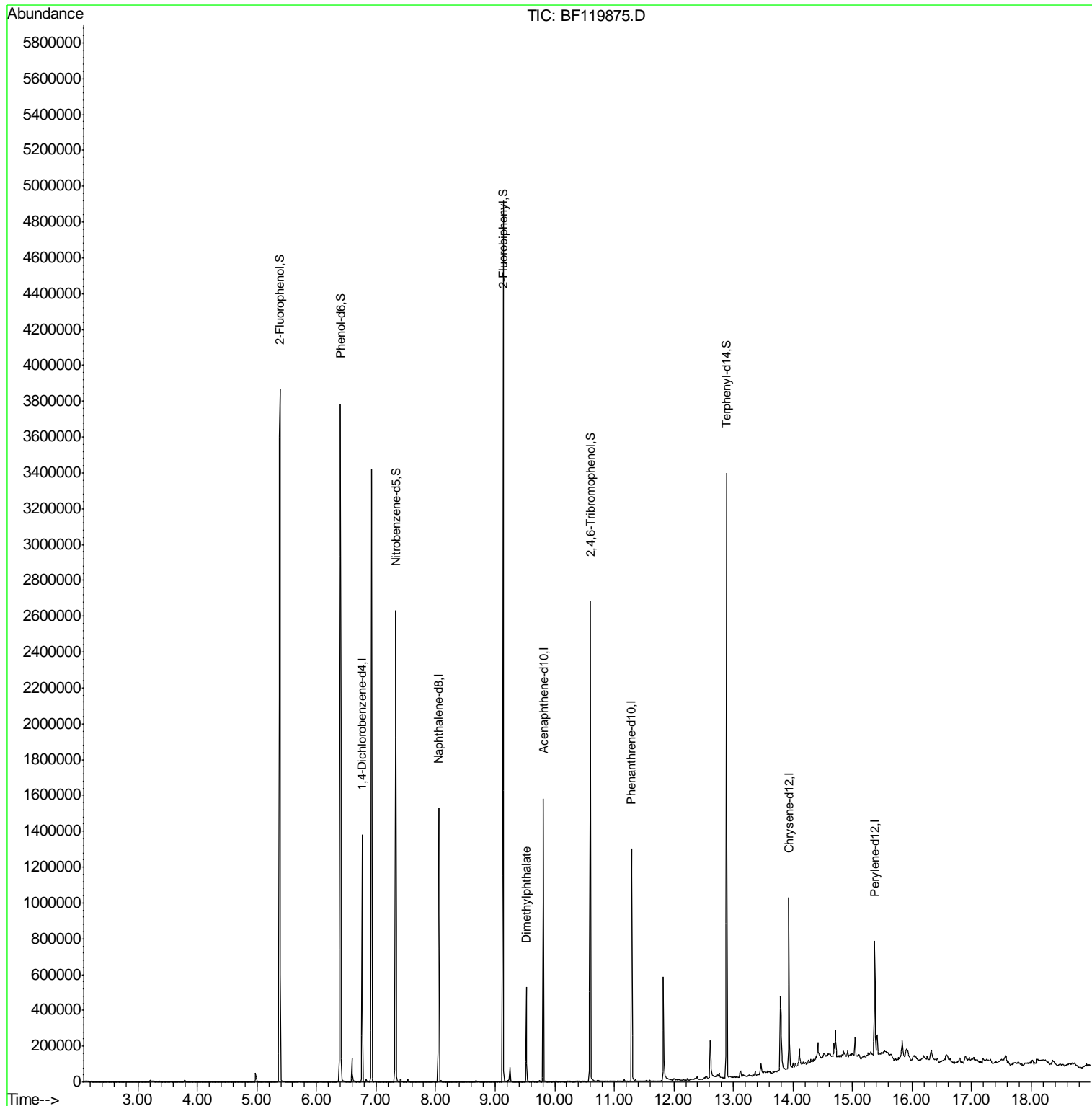
Internal Standards	R.T.	QIon	Response	Conc	Units	Dev(Min)
1) 1,4-Dichlorobenzene-d4	6.77	152	188189	20.00	ng	0.00
21) Naphthalene-d8	8.05	136	614571	20.00	ng	0.00
39) Acenaphthene-d10	9.81	164	281130	20.00	ng	0.00
64) Phenanthrene-d10	11.29	188	479831	20.00	ng	0.00
76) Chrysene-d12	13.93	240	302863	20.00	ng	0.00
87) Perylene-d12	15.37	264	294808	20.00	ng	0.00
System Monitoring Compounds						
5) 2-Fluorophenol	5.39	112	1060089	97.35	ng	0.01
7) Phenol-d6	6.40	99	1385594	98.75	ng	0.00
23) Nitrobenzene-d5	7.33	82	787832	66.32	ng	0.00
42) 2,4,6-Tribromophenol	10.60	330	304658	88.51	ng	0.00
45) 2-Fluorobiphenyl	9.13	172	1378307	69.61	ng	0.00
79) Terphenyl-d14	12.89	244	1147803	63.77	ng	0.00
Target Compounds						
50) Dimethylphthalate	9.53	163	203272	9.348	ng	98

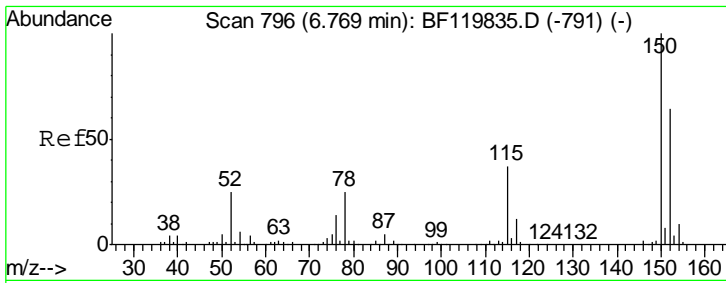
(#) = qualifier out of range (m) = manual integration (+) = signals summed

Data Path : Z:\SVOASRV\HPCHEM1\BNA F\DATA\BF040820\
 Data File : BF119875.D
 Acq On : 9 Apr 2020 17:51
 Operator : MA/SJ
 Sample : L2146-05
 Misc :
 ALS Vial : 38 Sample Multiplier: 1

Instrument :
 BNA_F
 ClientSampleId :
 TP-67-66-COMP

Quant Time: Apr 10 02:08:13 2020
 Quant Method : Z:\SVOASRV\HPCHEM1\BNA F\METHODS\8270-BF040820.M
 Quant Title : ASP BNA STANDARDS FOR 5 POINT CALIBRATION
 QLast Update : Thu Apr 09 01:21:19 2020
 Response via : Initial Calibration

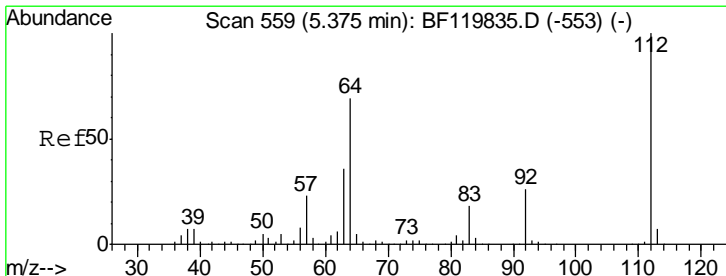
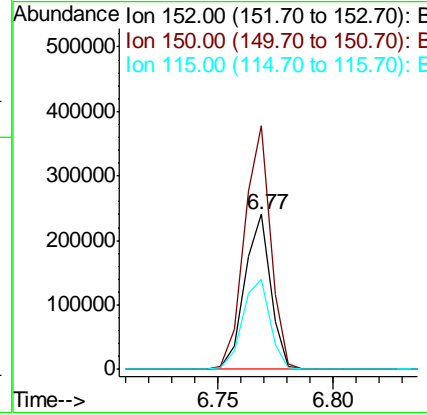
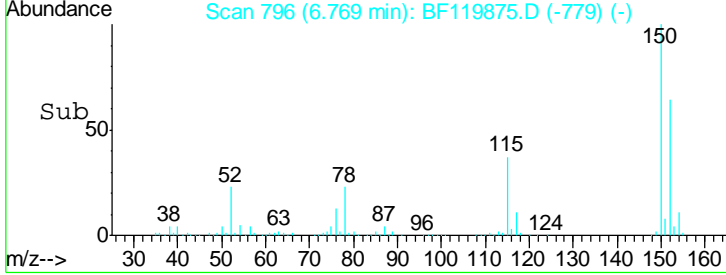
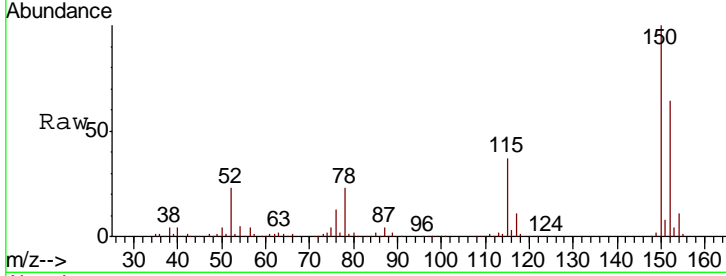




#1
 1,4-Dichlorobenzene-d4
 Concen: 20.000 ng
 RT: 6.77 min Scan# 796
 Delta R.T. -0.00 min
 Lab File: BF119875.D
 Acq: 9 Apr 2020 17:51

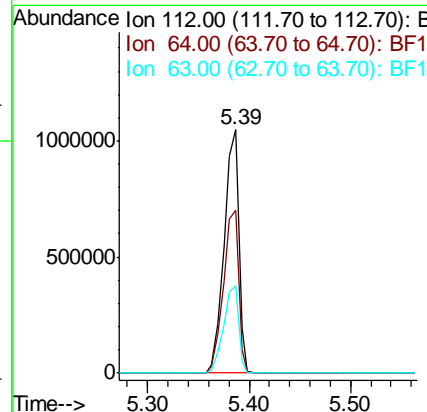
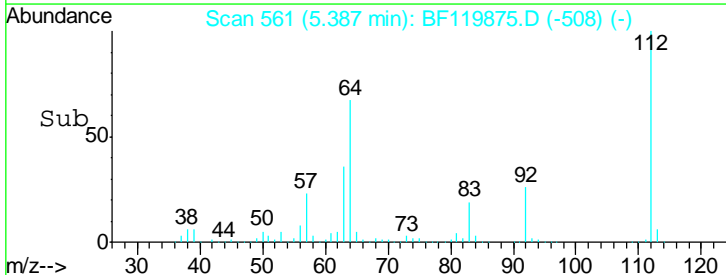
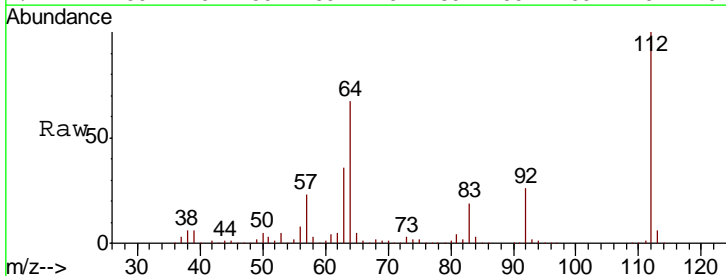
Instrument :
 BNA_F
 ClientSampled :
 TP-67-66-COMP

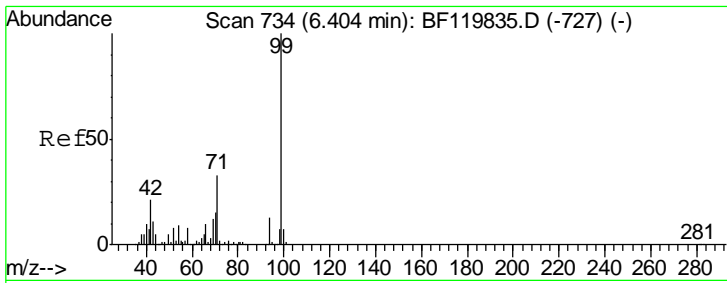
Tgt Ion	Resp	Lower	Upper
152	188189		
150	157.3	124.8	187.2
115	58.5	46.5	69.7



#5
 2-Fluorophenol
 Concen: 97.350 ng
 RT: 5.39 min Scan# 561
 Delta R.T. 0.01 min
 Lab File: BF119875.D
 Acq: 9 Apr 2020 17:51

Tgt Ion	Resp	Lower	Upper
112	1060089		
64	66.9	55.5	83.3
63	35.8	29.1	43.7

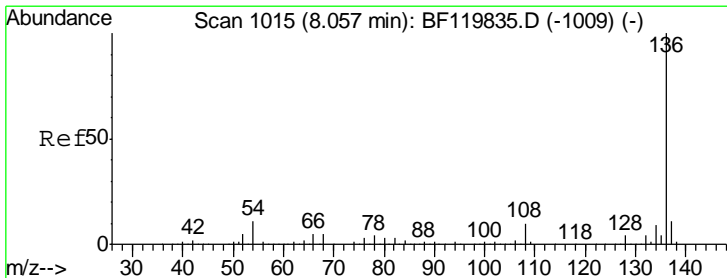
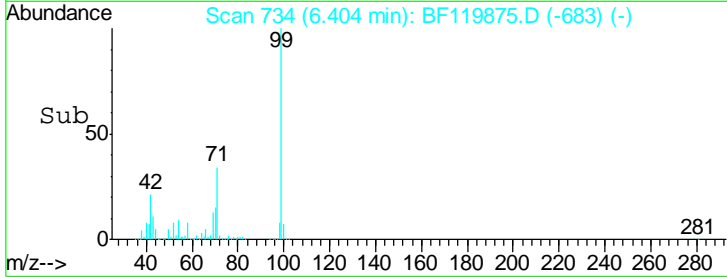
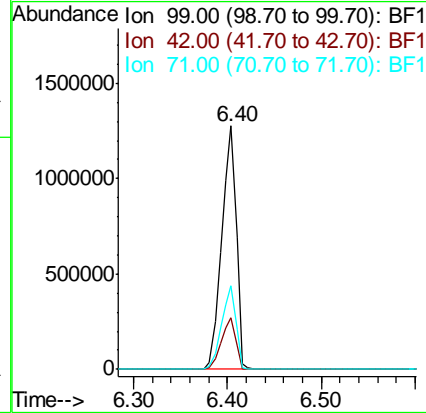
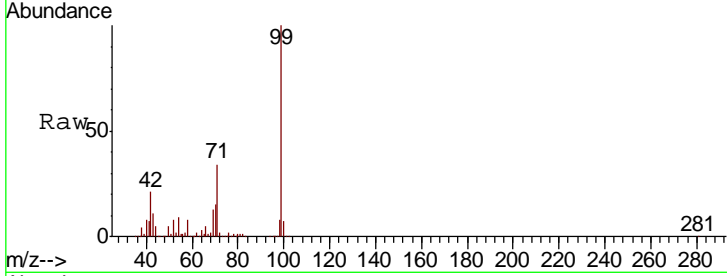




#7
 Phenol-d6
 Concen: 98.749 ng
 RT: 6.40 min Scan# 734
 Delta R.T. -0.00 min
 Lab File: BF119875.D
 Acq: 9 Apr 2020 17:51

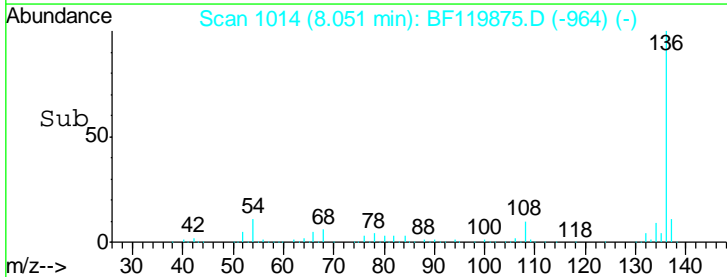
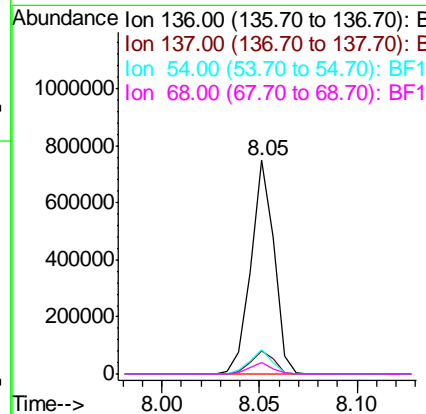
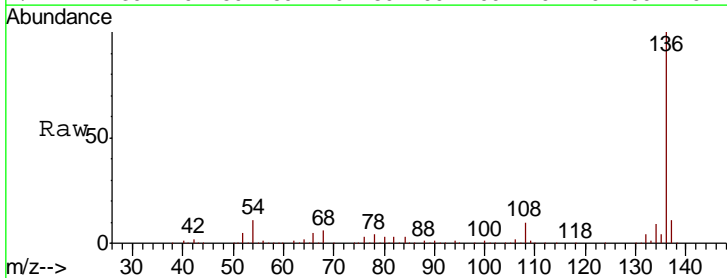
Instrument :
 BNA_F
 ClientSampled :
 TP-67-66-COMP

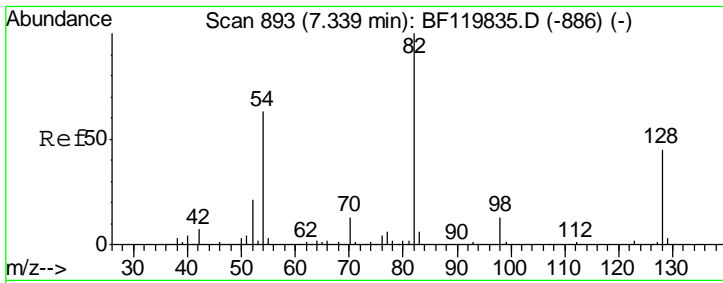
Tgt Ion	Resp	Lower	Upper
99	1385594		
42	21.0	16.9	25.3
71	34.2	26.3	39.5



#21
 Naphthalene-d8
 Concen: 20.000 ng
 RT: 8.05 min Scan# 1014
 Delta R.T. -0.01 min
 Lab File: BF119875.D
 Acq: 9 Apr 2020 17:51

Tgt Ion	Resp	Lower	Upper
136	614571		
137	10.8	8.7	13.1
54	11.2	8.5	12.7
68	5.5	3.9	5.9

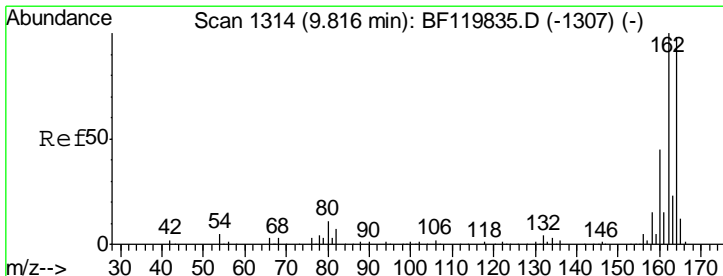
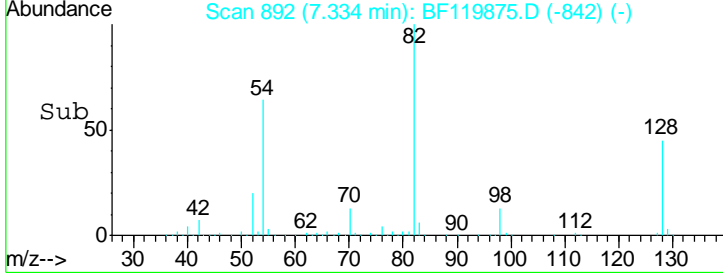
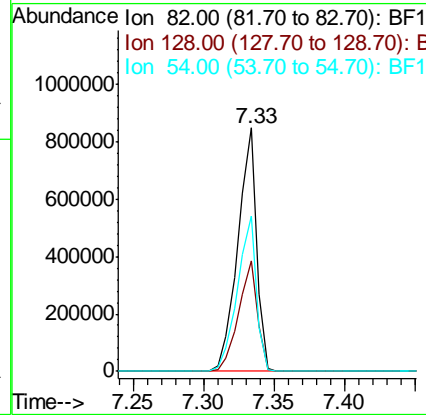
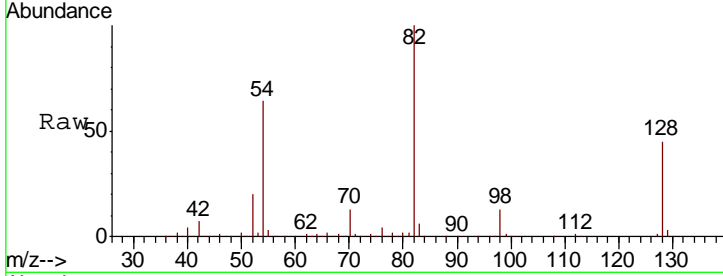




#23
 Nitrobenzene-d5
 Concen: 66.318 ng
 RT: 7.33 min Scan# 892
 Delta R.T. -0.01 min
 Lab File: BF119875.D
 Acq: 9 Apr 2020 17:51

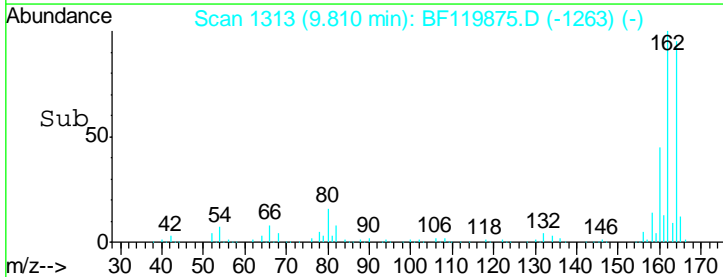
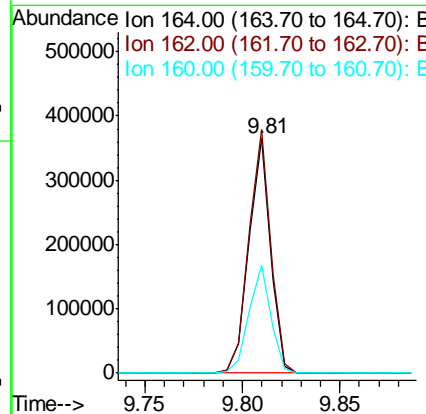
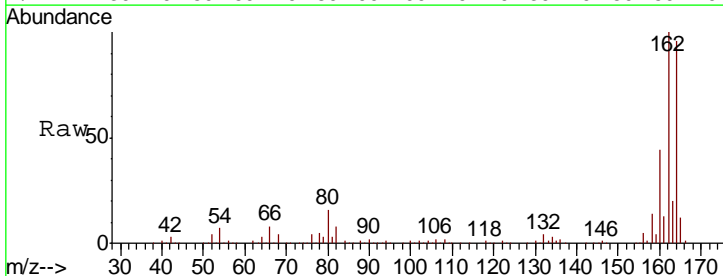
Instrument :
 BNA_F
 ClientSampleId :
 TP-67-66-COMP

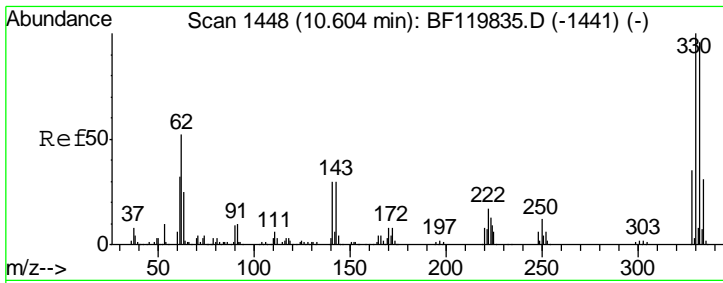
Tgt Ion	Resp	Lower	Upper
82	787832		
128	45.3	36.2	54.4
54	63.6	50.4	75.6



#39
 Acenaphthene-d10
 Concen: 20.000 ng
 RT: 9.81 min Scan# 1313
 Delta R.T. -0.01 min
 Lab File: BF119875.D
 Acq: 9 Apr 2020 17:51

Tgt Ion	Resp	Lower	Upper
164	281130		
162	104.0	81.9	122.9
160	46.2	36.6	54.8

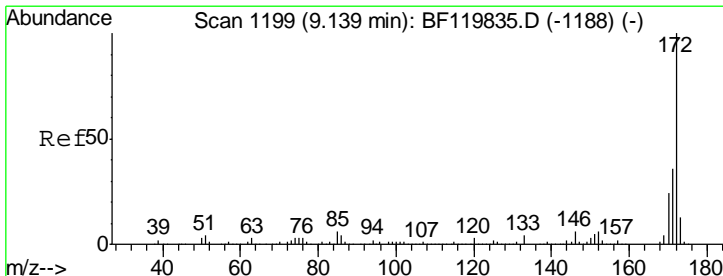
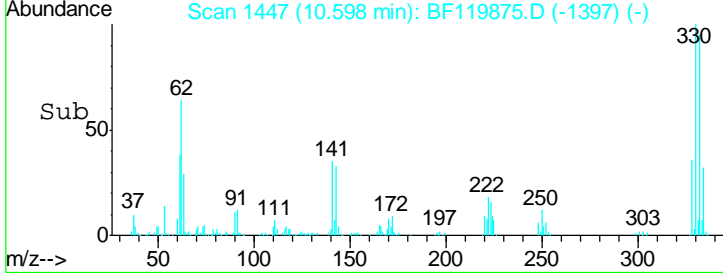
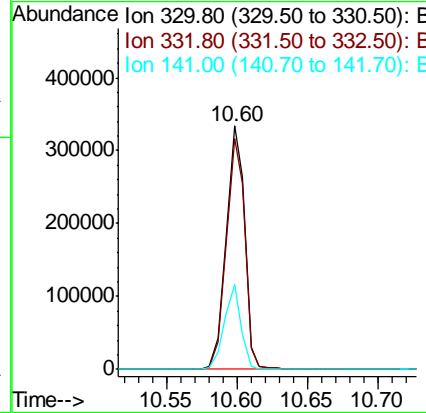
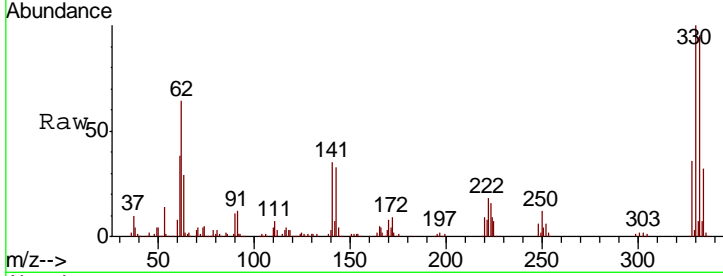




#42
 2,4,6-Tribromophenol
 Concen: 88.512 ng
 RT: 10.60 min Scan# 1447
 Delta R.T. -0.01 min
 Lab File: BF119875.D
 Acq: 9 Apr 2020 17:51

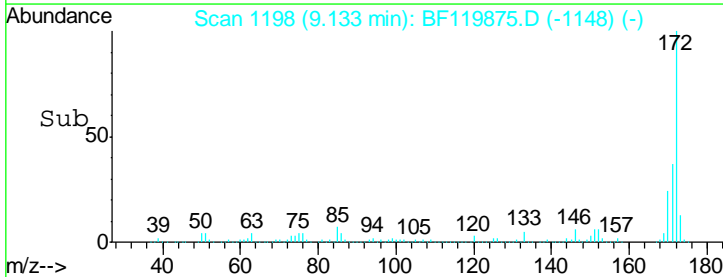
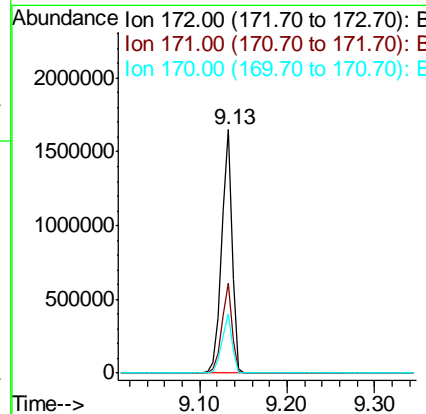
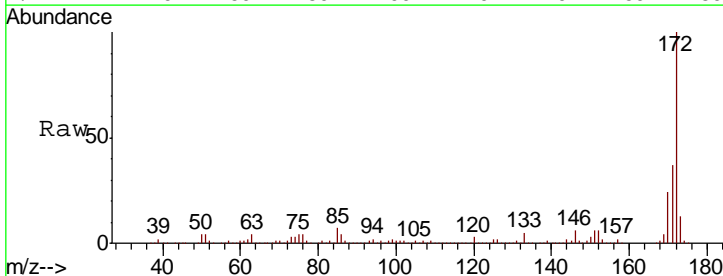
Instrument :
 BNA_F
 ClientSampled :
 TP-67-66-COMP

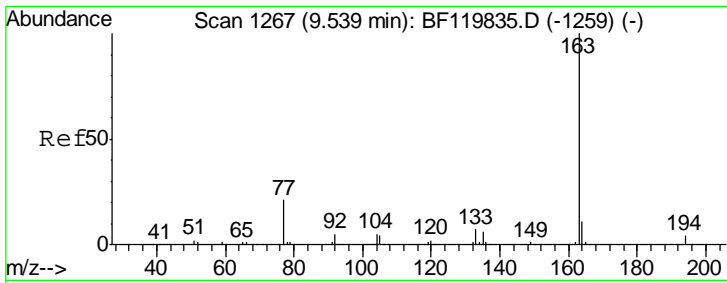
Tgt Ion	Resp	Lower	Upper
330	100		
332	95.2	76.8	115.2
141	31.4	25.1	37.7



#45
 2-Fluorobiphenyl
 Concen: 69.608 ng
 RT: 9.13 min Scan# 1198
 Delta R.T. -0.01 min
 Lab File: BF119875.D
 Acq: 9 Apr 2020 17:51

Tgt Ion	Resp	Lower	Upper
172	100		
171	37.1	28.9	43.3
170	24.4	19.4	29.2

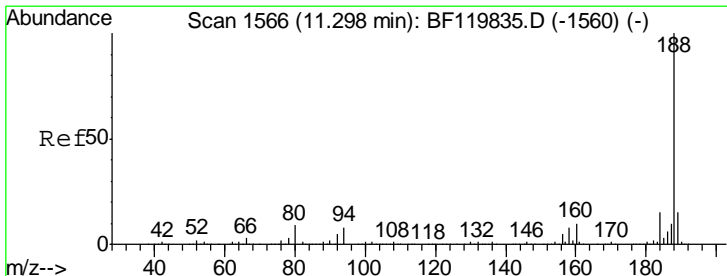
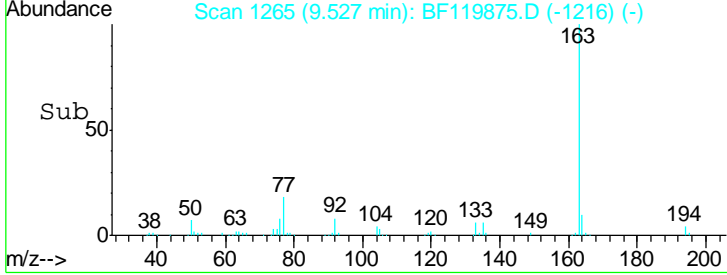
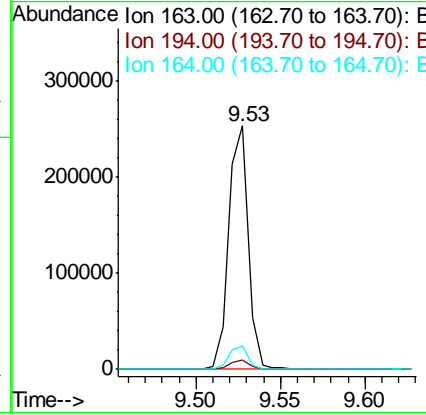
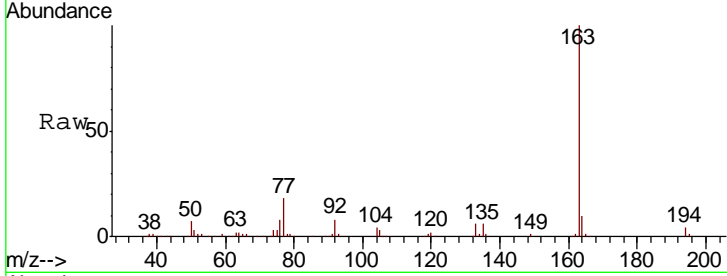




#50
 Dimethylphthalate
 Concen: 9.348 ng
 RT: 9.53 min Scan# 1265
 Delta R.T. -0.01 min
 Lab File: BF119875.D
 Acq: 9 Apr 2020 17:51

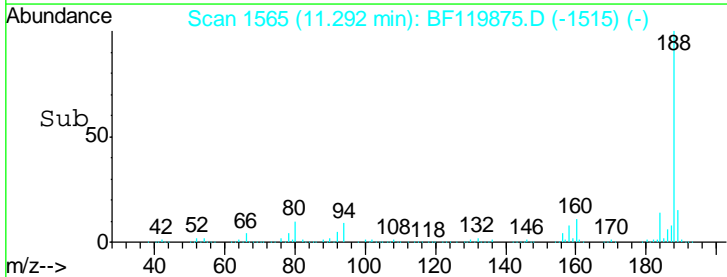
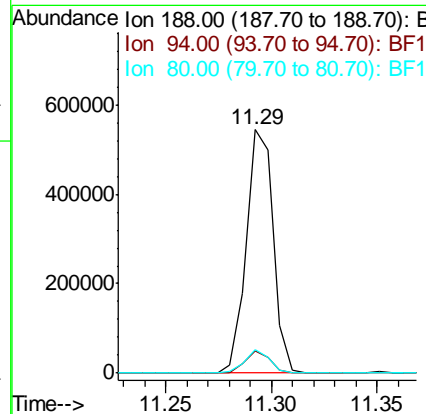
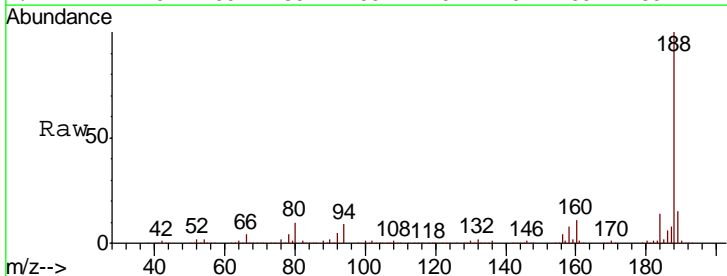
Instrument :
 BNA_F
ClientSampleId :
 TP-67-66-COMP

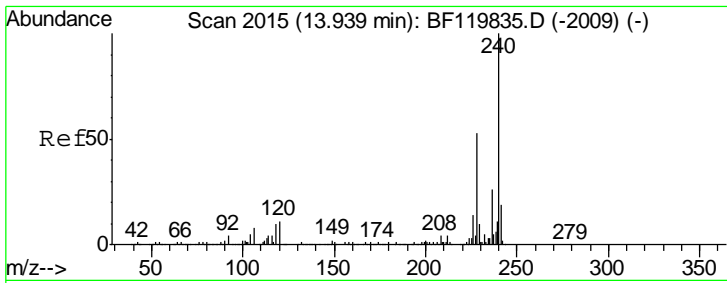
Tgt Ion	Resp	Lower	Upper
163	203272		
194	3.9	3.0	4.4
164	9.8	8.4	12.6



#64
 Phenanthrene-d10
 Concen: 20.000 ng
 RT: 11.29 min Scan# 1565
 Delta R.T. -0.01 min
 Lab File: BF119875.D
 Acq: 9 Apr 2020 17:51

Tgt Ion	Resp	Lower	Upper
188	479831		
94	8.9	6.7	10.1
80	9.9	7.4	11.2

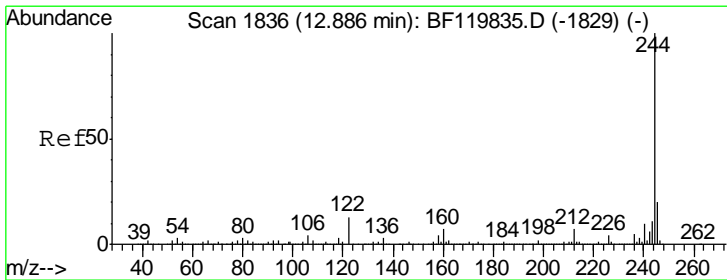
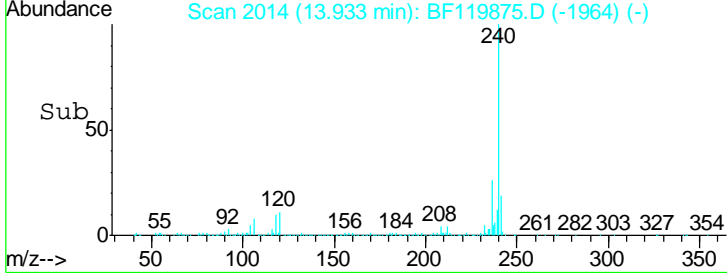
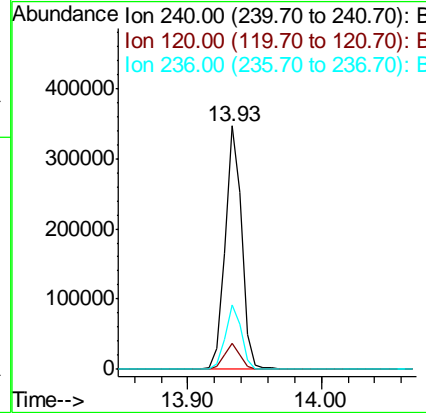
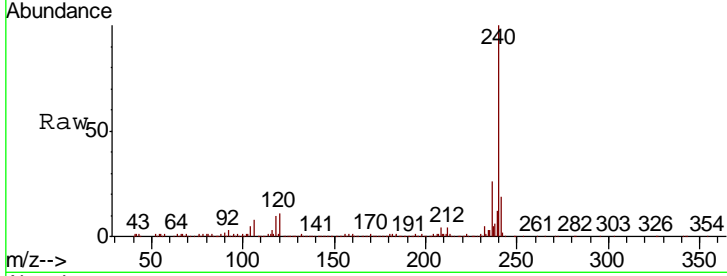




#76
 Chrysene-d12
 Concen: 20.000 ng
 RT: 13.93 min Scan# 2014
 Delta R.T. -0.01 min
 Lab File: BF119875.D
 Acq: 9 Apr 2020 17:51

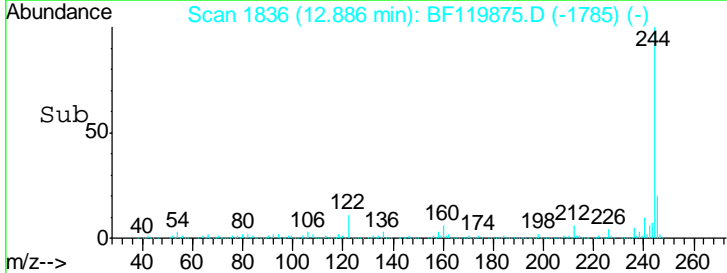
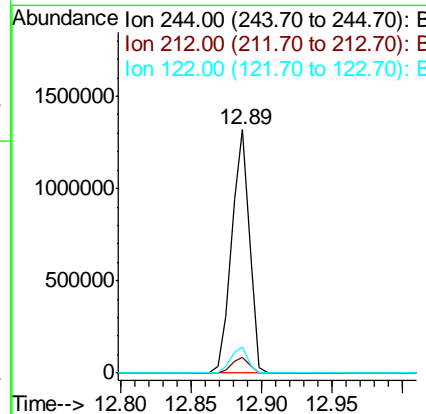
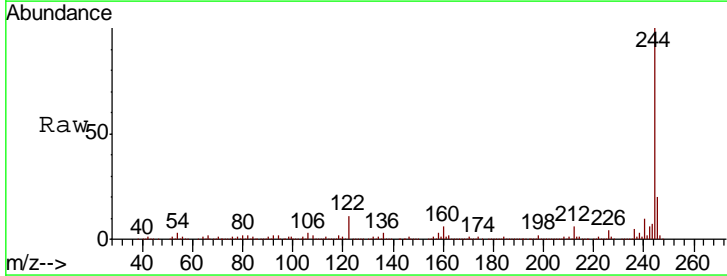
Instrument :
 BNA_F
 ClientSampled :
 TP-67-66-COMP

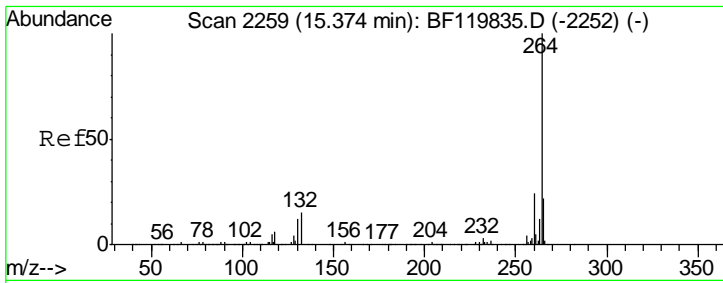
Tgt Ion	Resp	Lower	Upper
240	302863		
120	10.7	9.0	13.6
236	26.3	20.7	31.1



#79
 Terphenyl-d14
 Concen: 63.770 ng
 RT: 12.89 min Scan# 1836
 Delta R.T. -0.00 min
 Lab File: BF119875.D
 Acq: 9 Apr 2020 17:51

Tgt Ion	Resp	Lower	Upper
244	1147803		
212	6.3	5.4	8.0
122	10.5	10.3	15.5





#87
 Perylene-d12
 Concen: 20.000 ng
 RT: 15.37 min Scan# 2259
 Delta R.T. -0.00 min
 Lab File: BF119875.D
 Acq: 9 Apr 2020 17:51

Instrument :
 BNA_F
ClientSampled :
 TP-67-66-COMP

Tot Ion	264	260	265
Resp:	294808		
Ion Ratio	100	23.0	22.2
Lower		19.3	17.6
Upper		28.9	26.4

