

Data Path : Z:\SVOASRV\HPCHEM1\BNA F\DATA\BF040820\
 Data File : BF119876.D
 Acq On : 9 Apr 2020 18:18
 Operator : MA/SJ
 Sample : L2164-02
 Misc :
 ALS Vial : 40 Sample Multiplier: 1

Instrument :
 BNA_F
 ClientSampleId :
 ROLL-OFF-COMP

Quant Time: Apr 10 02:11:14 2020
 Quant Method : Z:\SVOASRV\HPCHEM1\BNA F\METHODS\8270-BF040820.M
 Quant Title : ASP BNA STANDARDS FOR 5 POINT CALIBRATION
 QLast Update : Thu Apr 09 01:21:19 2020
 Response via : Initial Calibration

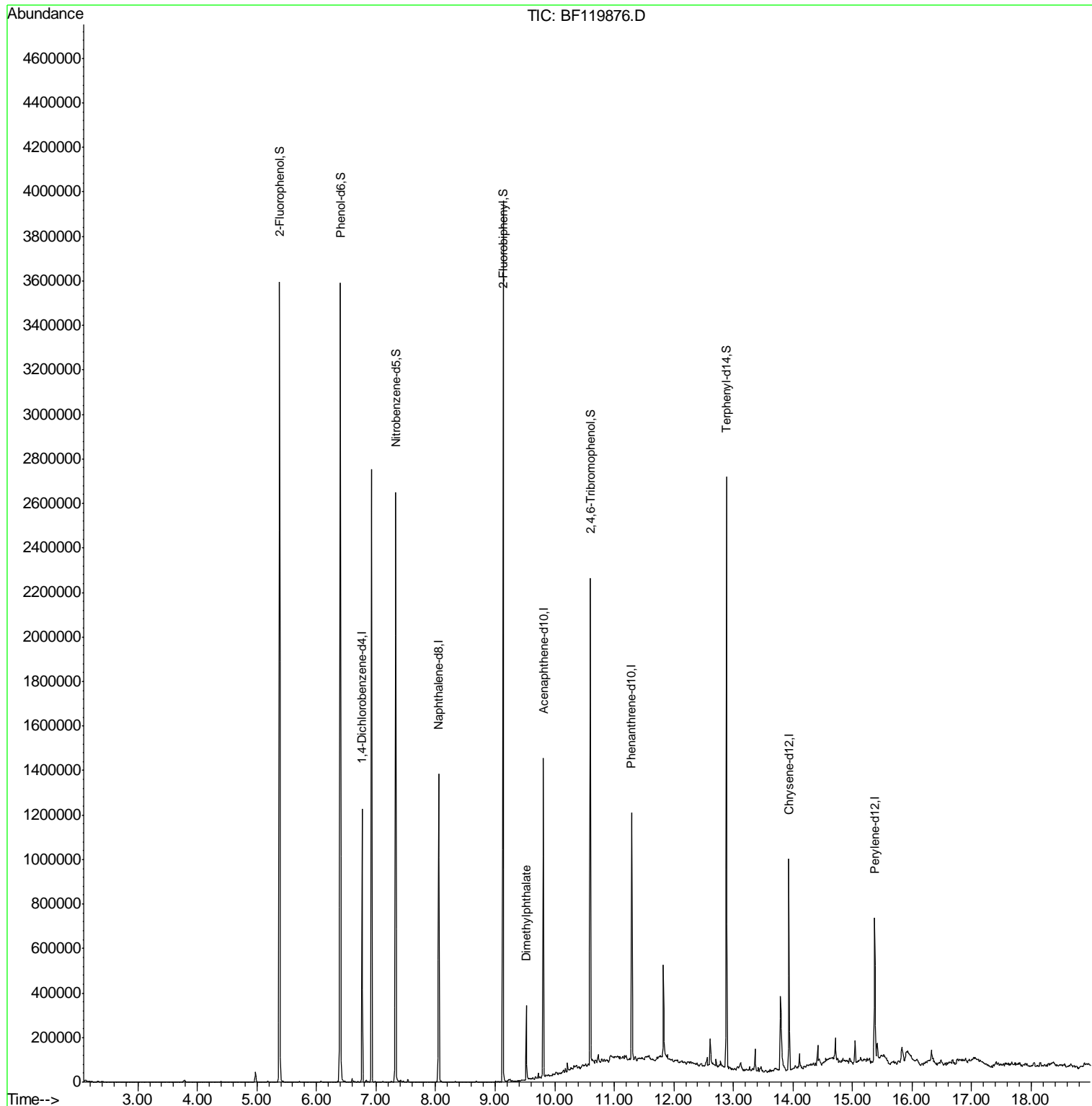
Internal Standards	R.T.	QIon	Response	Conc	Units	Dev(Min)
1) 1,4-Dichlorobenzene-d4	6.77	152	171045	20.00	ng	0.00
21) Naphthalene-d8	8.05	136	561842	20.00	ng	0.00
39) Acenaphthene-d10	9.81	164	260536	20.00	ng	0.00
64) Phenanthrene-d10	11.29	188	424630	20.00	ng	0.00
76) Chrysene-d12	13.93	240	311885	20.00	ng	0.00
87) Perylene-d12	15.37	264	285024	20.00	ng	0.00
System Monitoring Compounds						
5) 2-Fluorophenol	5.38	112	900250	90.96	ng	0.00
7) Phenol-d6	6.40	99	1252094	98.18	ng	0.00
23) Nitrobenzene-d5	7.33	82	780140	71.83	ng	0.00
42) 2,4,6-Tribromophenol	10.60	330	250746	78.61	ng	0.00
45) 2-Fluorobiphenyl	9.13	172	1173898	63.97	ng	0.00
79) Terphenyl-d14	12.89	244	931094	50.23	ng	0.00
Target Compounds						Qvalue
50) Dimethylphthalate	9.53	163	133587	6.629	ng	98

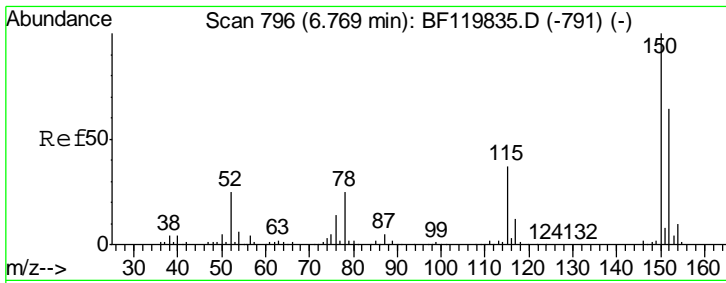
(#) = qualifier out of range (m) = manual integration (+) = signals summed

Data Path : Z:\SVOASRV\HPCHEM1\BNA F\DATA\BF040820\
 Data File : BF119876.D
 Acq On : 9 Apr 2020 18:18
 Operator : MA/SJ
 Sample : L2164-02
 Misc :
 ALS Vial : 40 Sample Multiplier: 1

Instrument :
 BNA_F
 ClientSampled :
 ROLL-OFF-COMP

Quant Time: Apr 10 02:11:14 2020
 Quant Method : Z:\SVOASRV\HPCHEM1\BNA F\METHODS\8270-BF040820.M
 Quant Title : ASP BNA STANDARDS FOR 5 POINT CALIBRATION
 QLast Update : Thu Apr 09 01:21:19 2020
 Response via : Initial Calibration

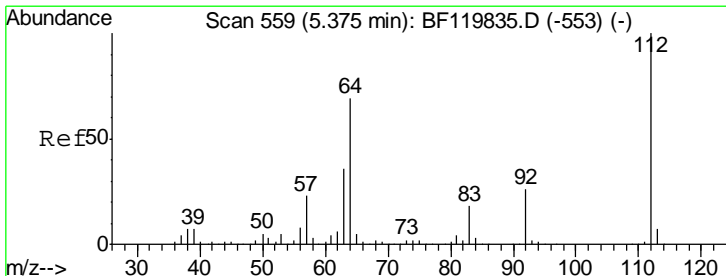
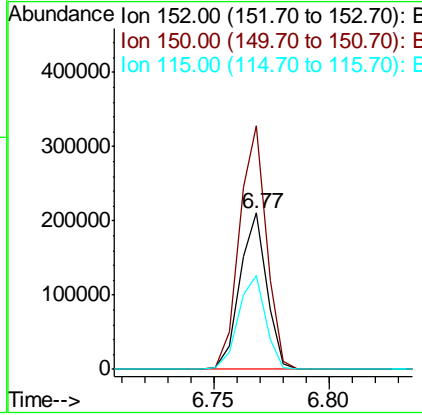
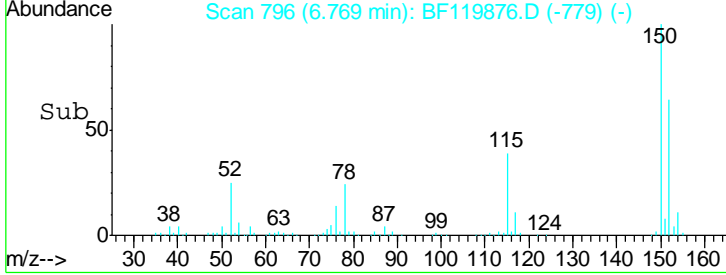
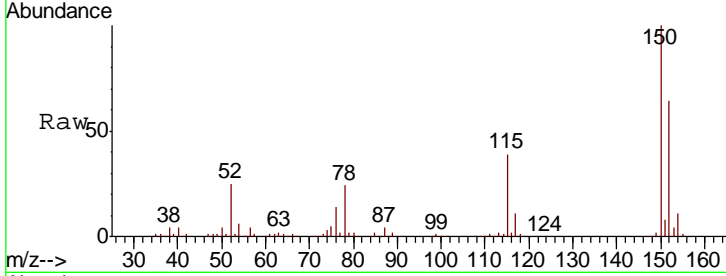




#1
 1,4-Dichlorobenzene-d4
 Concen: 20.000 ng
 RT: 6.77 min Scan# 796
 Delta R.T. -0.00 min
 Lab File: BF119876.D
 Acq: 9 Apr 2020 18:18

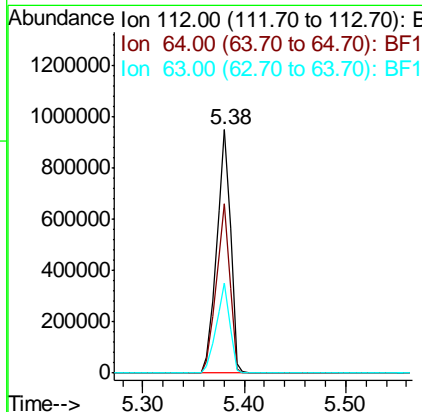
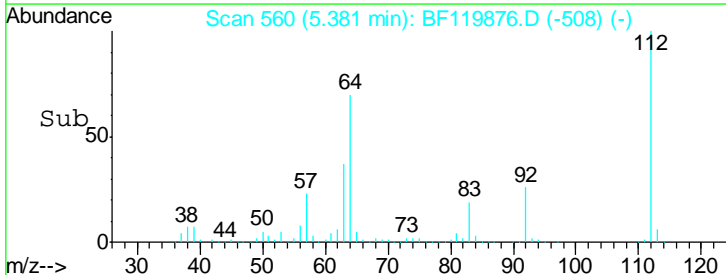
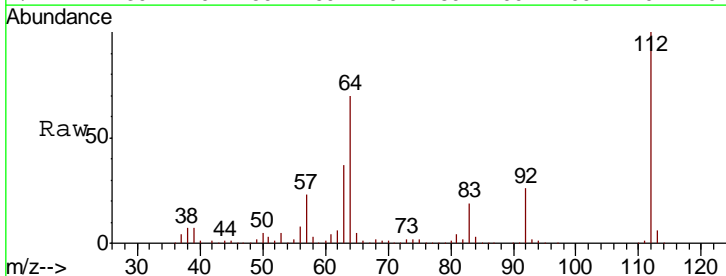
Instrument :
 BNA_F
ClientSampleId :
 ROLL-OFF-COMP

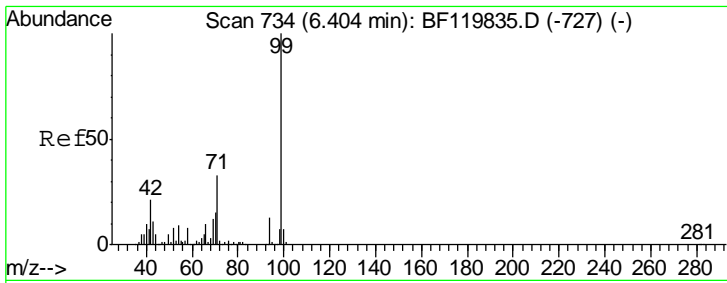
Tgt Ion	Resp	Lower	Upper
152	171045		
150	155.9	124.8	187.2
115	60.1	46.5	69.7



#5
 2-Fluorophenol
 Concen: 90.958 ng
 RT: 5.38 min Scan# 560
 Delta R.T. 0.01 min
 Lab File: BF119876.D
 Acq: 9 Apr 2020 18:18

Tgt Ion	Resp	Lower	Upper
112	900250		
64	69.7	55.5	83.3
63	36.9	29.1	43.7

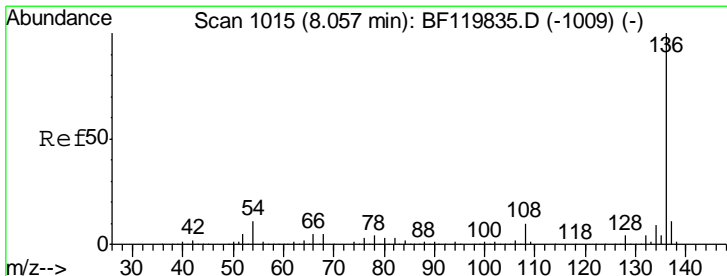
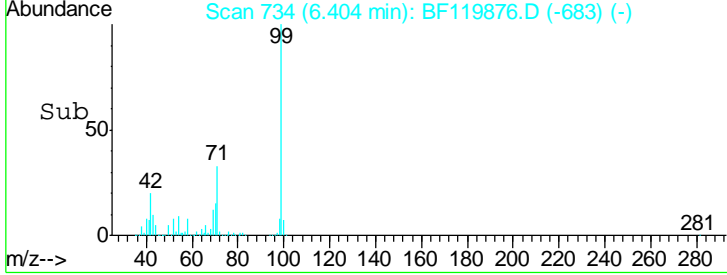
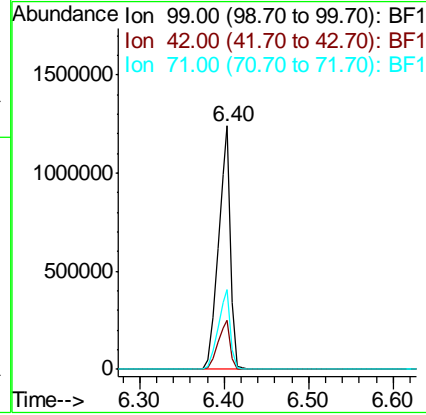
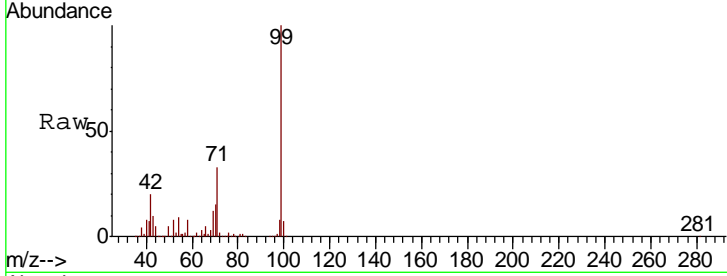




#7
 Phenol-d6
 Concen: 98.178 ng
 RT: 6.40 min Scan# 734
 Delta R.T. -0.00 min
 Lab File: BF119876.D
 Acq: 9 Apr 2020 18:18

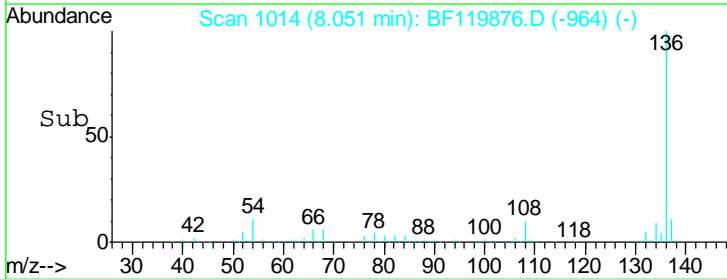
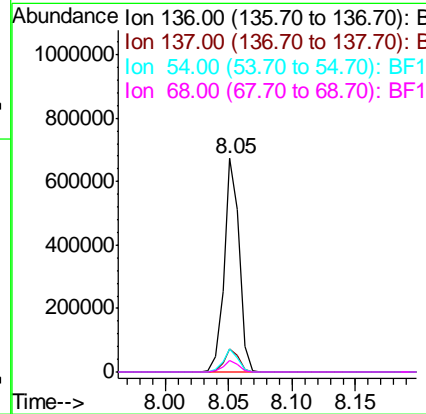
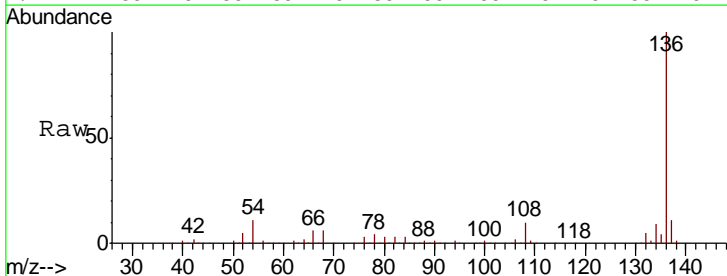
Instrument :
 BNA_F
ClientSampled :
 ROLL-OFF-COMP

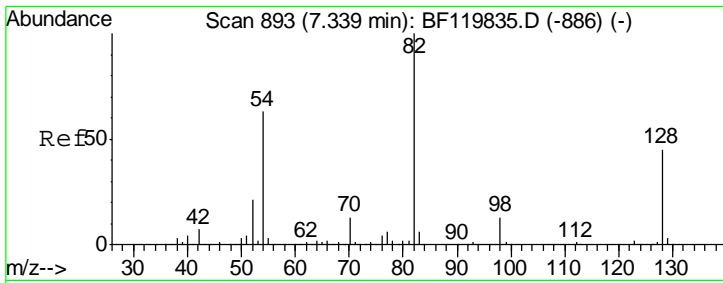
Tgt Ion	Resp	Lower	Upper
99	1252094		
42	20.1	16.9	25.3
71	32.9	26.3	39.5



#21
 Naphthalene-d8
 Concen: 20.000 ng
 RT: 8.05 min Scan# 1014
 Delta R.T. -0.01 min
 Lab File: BF119876.D
 Acq: 9 Apr 2020 18:18

Tgt Ion	Resp	Lower	Upper
136	561842		
137	11.1	8.7	13.1
54	11.0	8.5	12.7
68	5.7	3.9	5.9

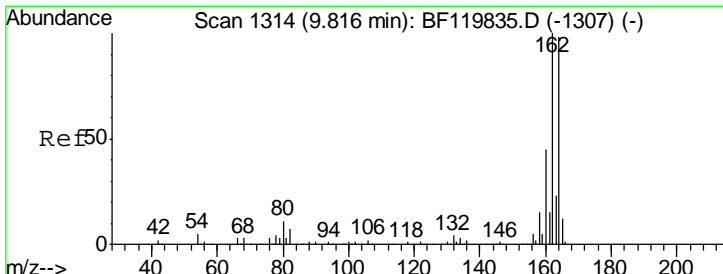
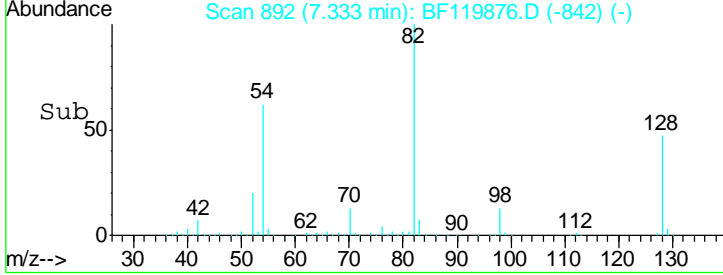
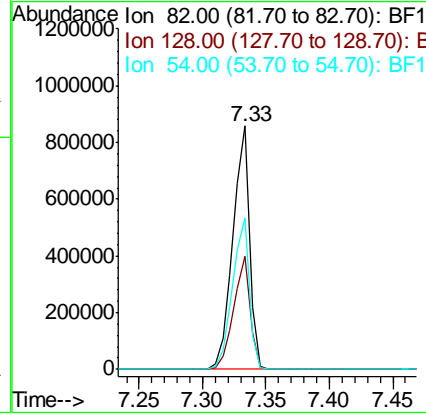
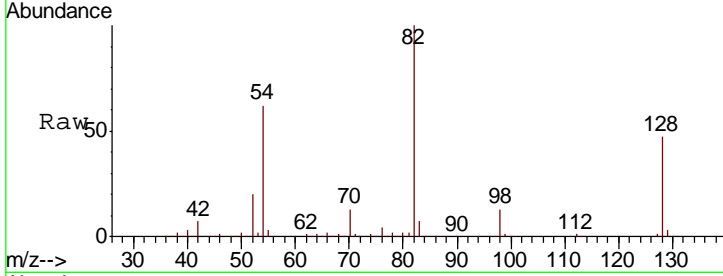




#23
 Nitrobenzene-d5
 Concen: 71.834 ng
 RT: 7.33 min Scan# 892
 Delta R.T. -0.01 min
 Lab File: BF119876.D
 Acq: 9 Apr 2020 18:18

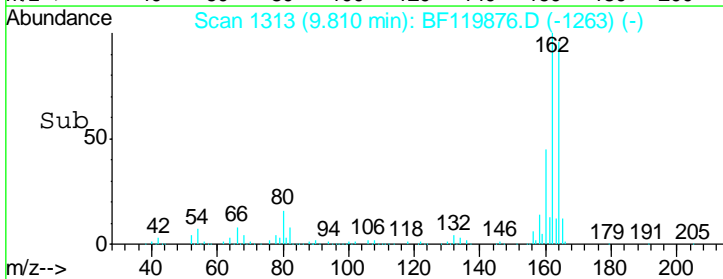
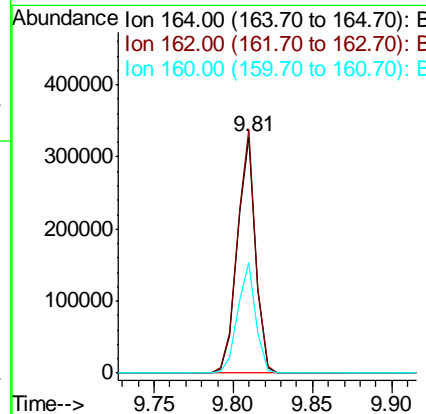
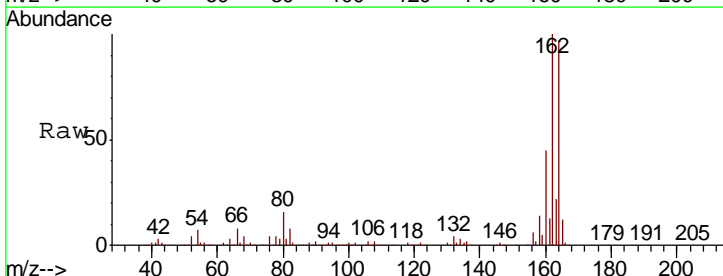
Instrument :
 BNA_F
ClientSampleId :
 ROLL-OFF-COMP

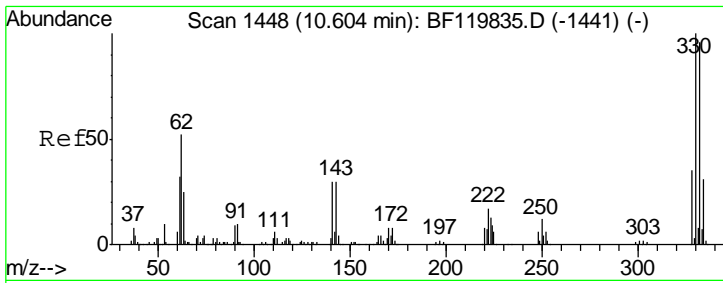
Tgt Ion	Resp	Lower	Upper
82	100		
128	46.7	36.2	54.4
54	62.1	50.4	75.6



#39
 Acenaphthene-d10
 Concen: 20.000 ng
 RT: 9.81 min Scan# 1313
 Delta R.T. -0.01 min
 Lab File: BF119876.D
 Acq: 9 Apr 2020 18:18

Tgt Ion	Resp	Lower	Upper
164	100		
162	102.9	81.9	122.9
160	46.7	36.6	54.8

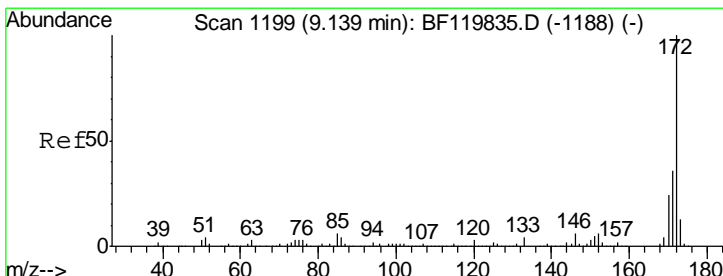
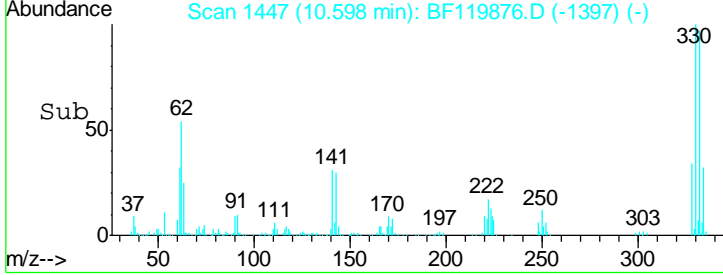
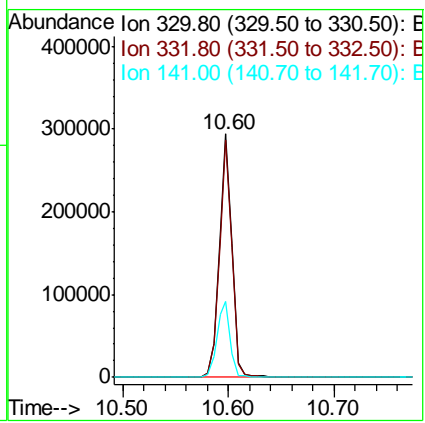
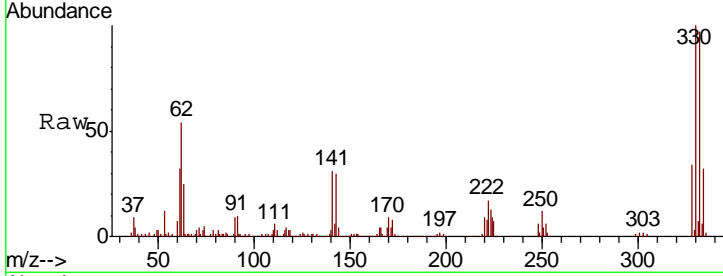




#42
 2,4,6-Tribromophenol
 Concen: 78.608 ng
 RT: 10.60 min Scan# 1447
 Delta R.T. -0.01 min
 Lab File: BF119876.D
 Acq: 9 Apr 2020 18:18

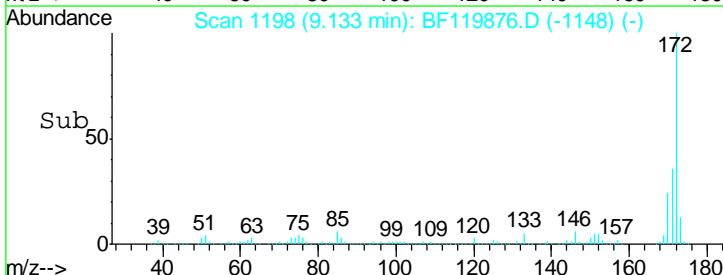
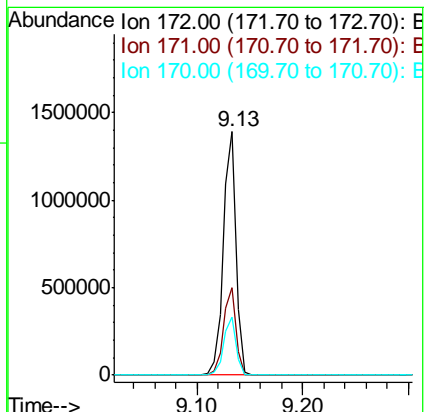
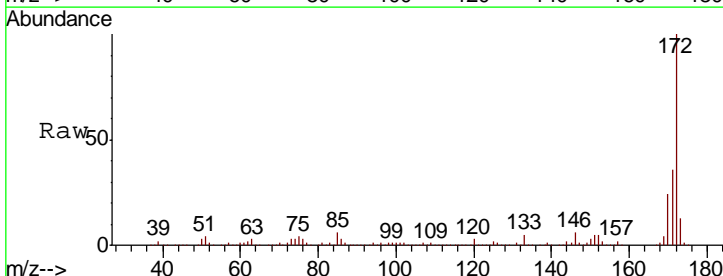
Instrument :
 BNA_F
 ClientSampleId :
 ROLL-OFF-COMP

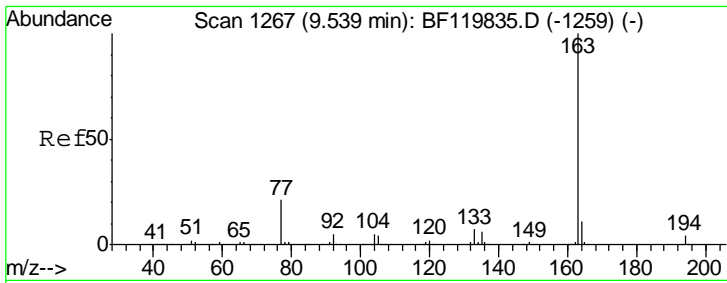
Tgt Ion	Resp	Lower	Upper
330	100		
332	96.5	76.8	115.2
141	32.1	25.1	37.7



#45
 2-Fluorobiphenyl
 Concen: 63.971 ng
 RT: 9.13 min Scan# 1198
 Delta R.T. -0.01 min
 Lab File: BF119876.D
 Acq: 9 Apr 2020 18:18

Tgt Ion	Resp	Lower	Upper
172	100		
171	35.9	28.9	43.3
170	23.6	19.4	29.2

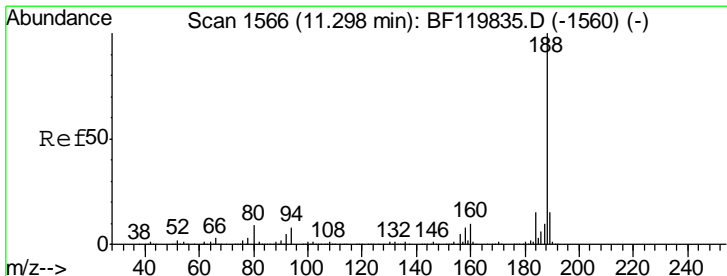
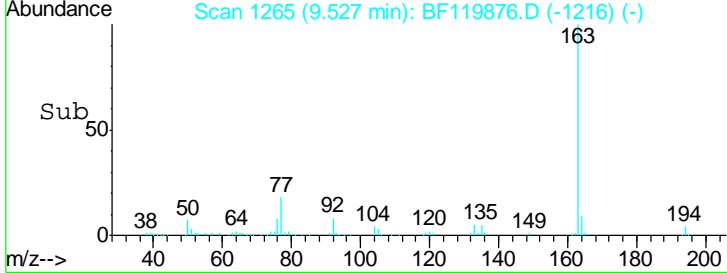
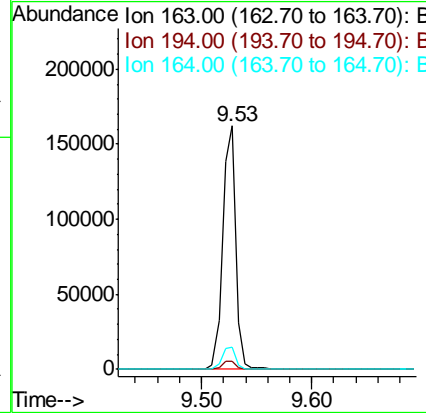
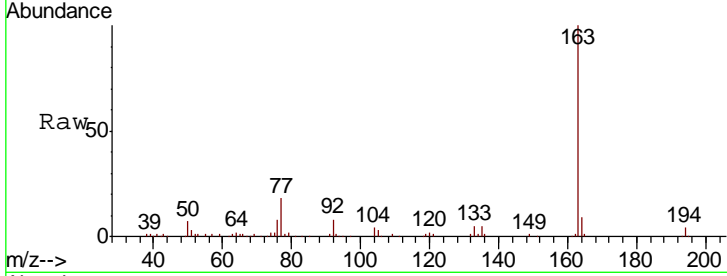




#50
 Dimethylphthalate
 Concen: 6.629 ng
 RT: 9.53 min Scan# 1265
 Delta R.T. -0.01 min
 Lab File: BF119876.D
 Acq: 9 Apr 2020 18:18

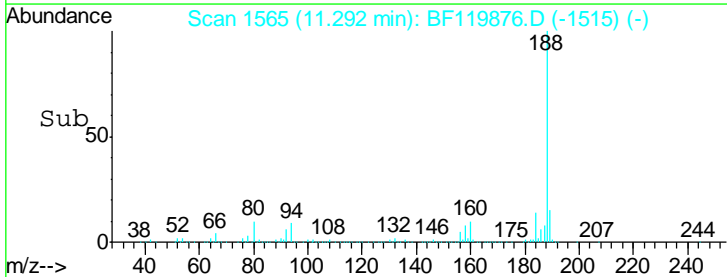
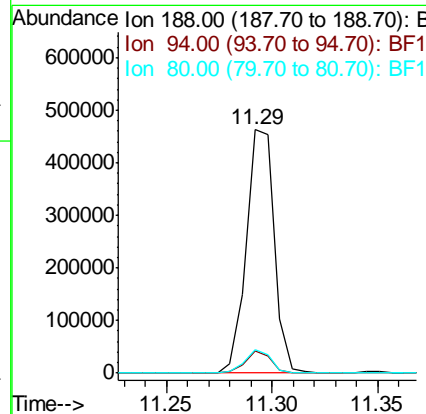
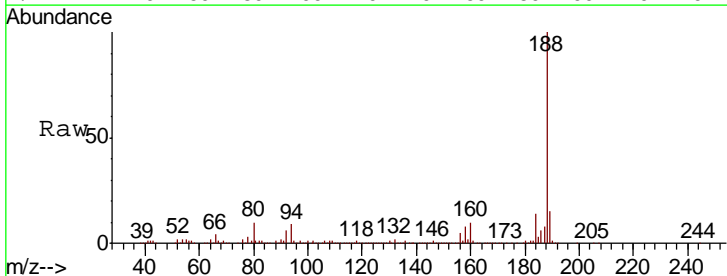
Instrument :
 BNA_F
ClientSampleId :
 ROLL-OFF-COMP

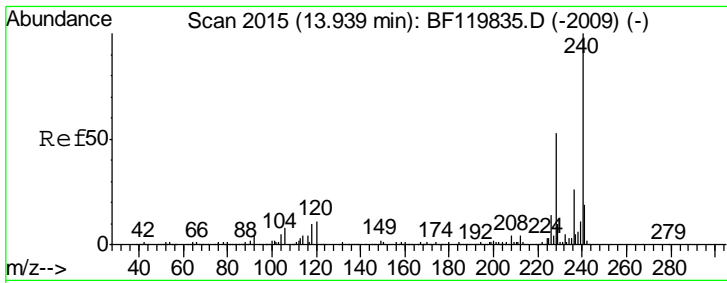
Tgt Ion	Resp	Lower	Upper
163	133587		
194	3.6	3.0	4.4
164	9.3	8.4	12.6



#64
 Phenanthrene-d10
 Concen: 20.000 ng
 RT: 11.29 min Scan# 1565
 Delta R.T. -0.01 min
 Lab File: BF119876.D
 Acq: 9 Apr 2020 18:18

Tgt Ion	Resp	Lower	Upper
188	424630		
94	9.3	6.7	10.1
80	9.6	7.4	11.2

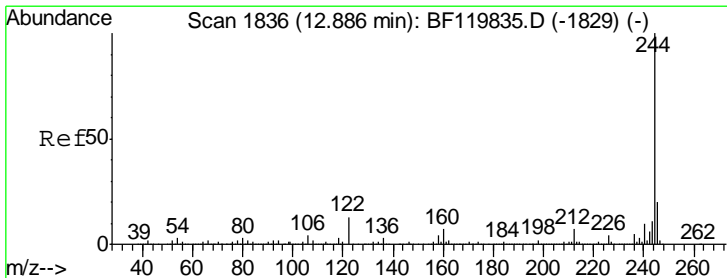
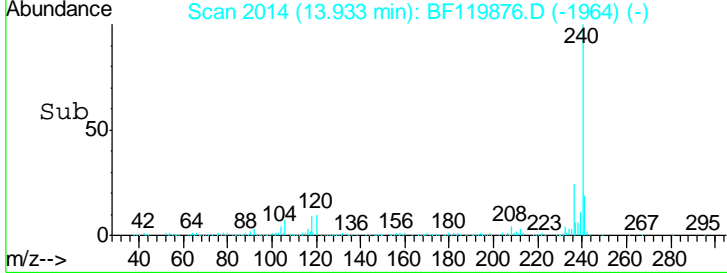
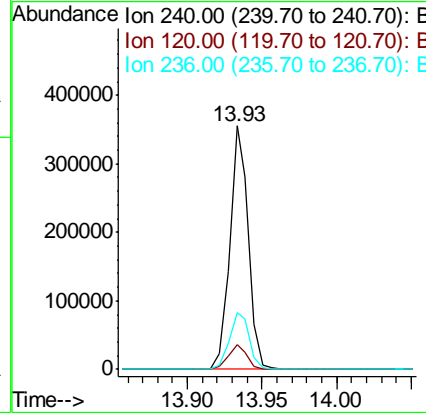
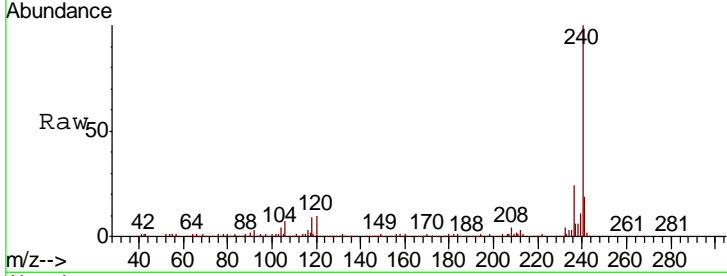




#76
 Chrysene-d12
 Concen: 20.000 ng
 RT: 13.93 min Scan# 2014
 Delta R.T. -0.01 min
 Lab File: BF119876.D
 Acq: 9 Apr 2020 18:18

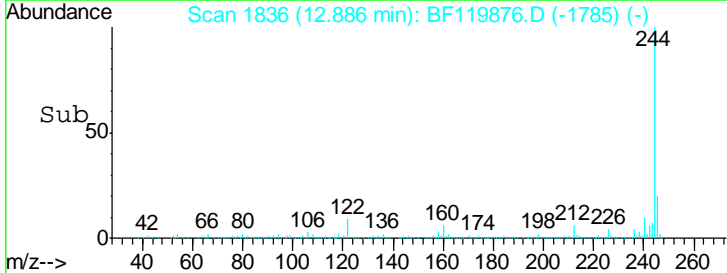
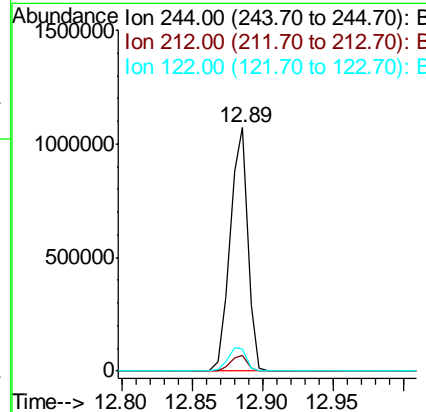
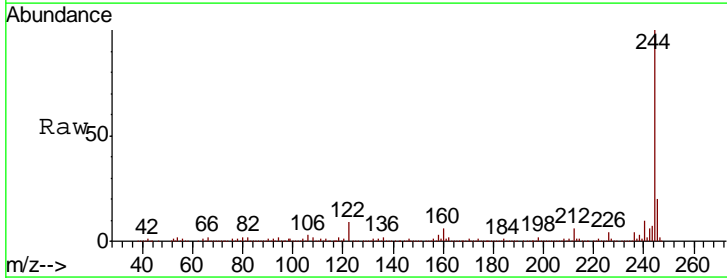
Instrument :
 BNA_F
 ClientSampleId :
 ROLL-OFF-COMP

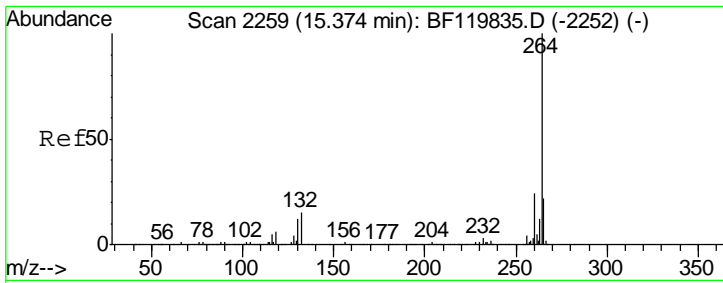
Tgt Ion	Resp	Lower	Upper
240	311885		
120	10.0	9.0	13.6
236	23.6	20.7	31.1



#79
 Terphenyl-d14
 Concen: 50.234 ng
 RT: 12.89 min Scan# 1836
 Delta R.T. -0.00 min
 Lab File: BF119876.D
 Acq: 9 Apr 2020 18:18

Tgt Ion	Resp	Lower	Upper
244	931094		
212	6.3	5.4	8.0
122	9.3	10.3	15.5#





#87
 Perylene-d12
 Concen: 20.000 ng
 RT: 15.37 min Scan# 2259
 Delta R.T. -0.00 min
 Lab File: BF119876.D
 Acq: 9 Apr 2020 18:18

Instrument :
 BNA_F
 ClientSampled :
 ROLL-OFF-COMP

Tot Ion: 264 Resp: 285024

Ion	Ratio	Lower	Upper
264	100		
260	23.2	19.3	28.9
265	21.3	17.6	26.4

