

Data Path : Z:\SVOASRV\HPCHEM1\BNA F\DATA\BF041320\
 Data File : BF119938.D
 Acq On : 14 Apr 2020 6:38
 Operator : MA/SJ
 Sample : PB128142BL
 Misc :
 ALS Vial : 26 Sample Multiplier: 1

Instrument :
 BNA_F
 ClientSampleId :

Quant Time: Apr 14 07:44:50 2020
 Quant Method : Z:\SVOASRV\HPCHEM1\BNA F\METHODS\8270-BF040820.M
 Quant Title : ASP BNA STANDARDS FOR 5 POINT CALIBRATION
 QLast Update : Mon Apr 13 13:37:50 2020
 Response via : Initial Calibration

Internal Standards	R.T.	QIon	Response	Conc	Units	Dev(Min)
1) 1,4-Dichlorobenzene-d4	6.73	152	223680	20.00	ng	0.00
21) Naphthalene-d8	8.02	136	871495	20.00	ng	-0.01
39) Acenaphthene-d10	9.77	164	463602	20.00	ng	0.00
64) Phenanthrene-d10	11.26	188	912978	20.00	ng	0.00
76) Chrysene-d12	13.90	240	725904	20.00	ng	-0.01
87) Perylene-d12	15.33	264	636359	20.00	ng	0.00

System Monitoring Compounds

5) 2-Fluorophenol	5.35	112	1596379	123.34	ng	0.01
7) Phenol-d6	6.37	99	2002469	120.07	ng	0.00
23) Nitrobenzene-d5	7.30	82	1242874	73.78	ng	-0.01
42) 2,4,6-Tribromophenol	10.57	330	626121	110.31	ng	0.00
45) 2-Fluorobiphenyl	9.10	172	2402340	73.57	ng	-0.01
79) Terphenyl-d14	12.86	244	3040488	70.48	ng	0.00

Target Compounds

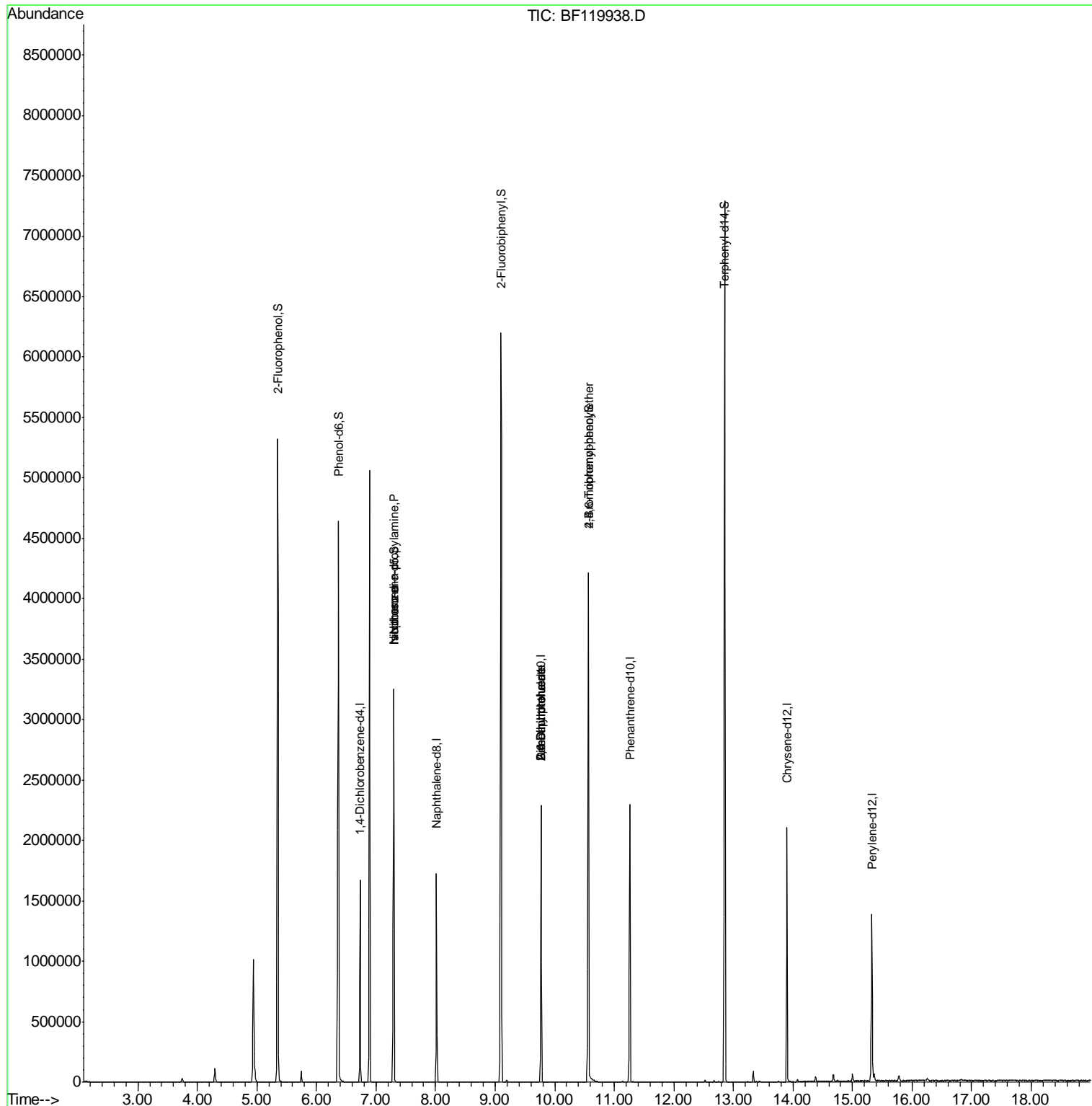
	R.T.	QIon	Response	Conc	Units	Qvalue
9) Benzaldehyde	6.37	77	2542	Below Cal		# 1
19) n-Nitroso-di-n-propylamine	7.30	70	162466	15.149	ng	# 76
25) Isophorone	7.30	82	1240488	38.200	ng	# 65
50) Dimethylphthalate	9.77	163	104585	2.917	ng	# 1
51) 2,6-Dinitrotoluene	9.77	165	57707	7.349	ng	# 19
57) 2,4-Dinitrotoluene	9.77	165	57707	5.578	ng	# 22
67) 4-Bromophenyl-phenylether	10.57	248	36289	3.196	ng	# 1

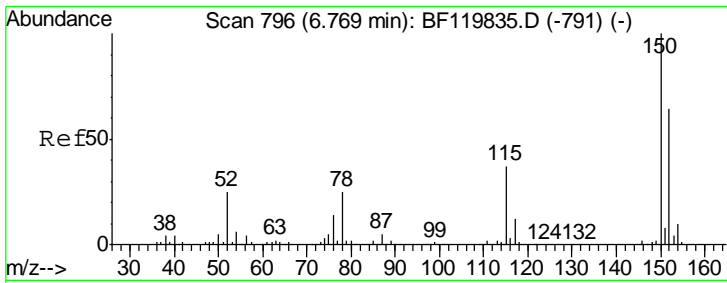
(#) = qualifier out of range (m) = manual integration (+) = signals summed

Data Path : Z:\SVOASRV\HPCHEM1\BNA F\DATA\BF041320\
 Data File : BF119938.D
 Acq On : 14 Apr 2020 6:38
 Operator : MA/SJ
 Sample : PB128142BL
 Misc :
 ALS Vial : 26 Sample Multiplier: 1

Instrument :
 BNA_F
 ClientSampleId :

Quant Time: Apr 14 07:44:50 2020
 Quant Method : Z:\SVOASRV\HPCHEM1\BNA F\METHODS\8270-BF040820.M
 Quant Title : ASP BNA STANDARDS FOR 5 POINT CALIBRATION
 QLast Update : Mon Apr 13 13:37:50 2020
 Response via : Initial Calibration

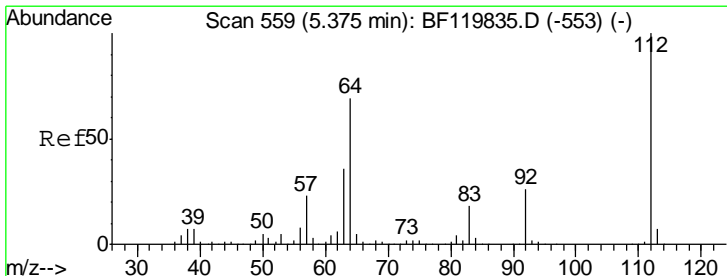
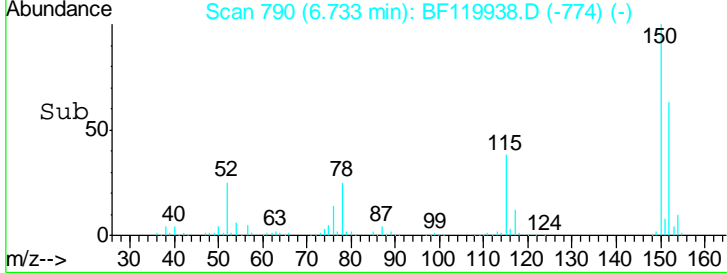
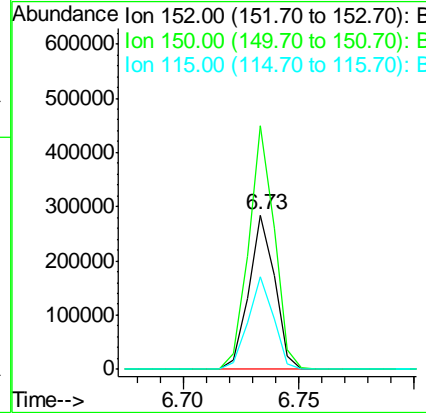
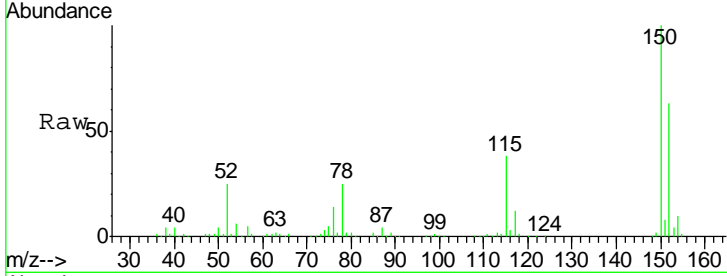




#1
 1,4-Dichlorobenzene-d4
 Concen: 20.000 ng
 RT: 6.73 min Scan# 790
 Delta R.T. -0.01 min
 Lab File: BF119938.D
 Acq: 14 Apr 2020 6:38

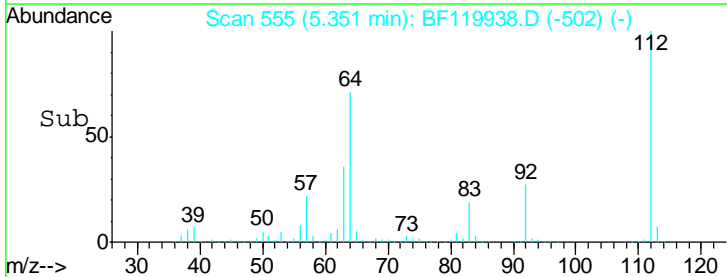
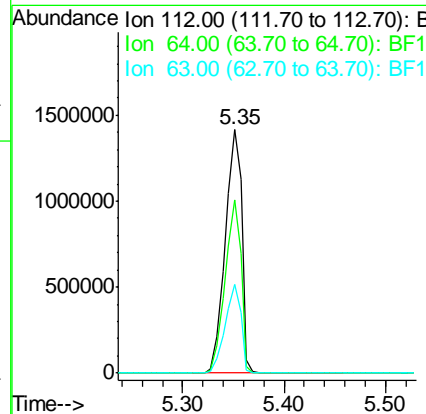
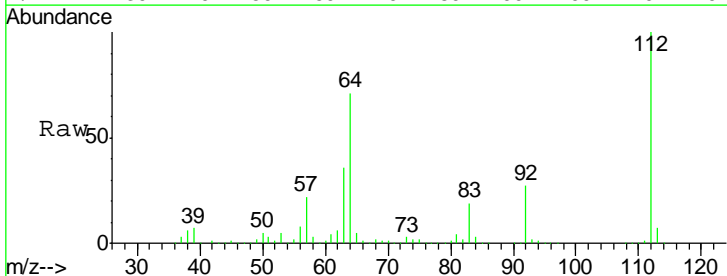
Instrument :
 BNA_F
 ClientSampled :

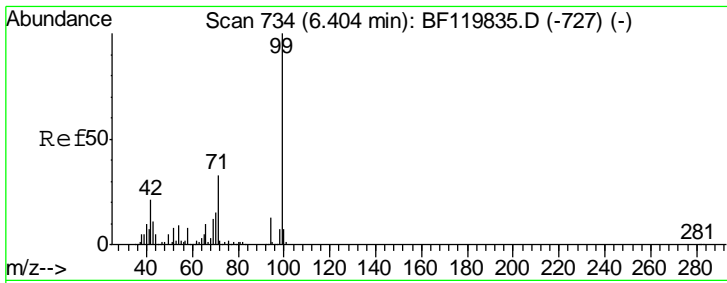
Tgt Ion	Resp	Lower	Upper
152	100		
150	158.1	124.8	187.2
115	60.3	46.5	69.7



#5
 2-Fluorophenol
 Concen: 123.339 ng
 RT: 5.35 min Scan# 555
 Delta R.T. 0.01 min
 Lab File: BF119938.D
 Acq: 14 Apr 2020 6:38

Tgt Ion	Resp	Lower	Upper
112	100		
64	70.9	55.5	83.3
63	36.3	29.1	43.7

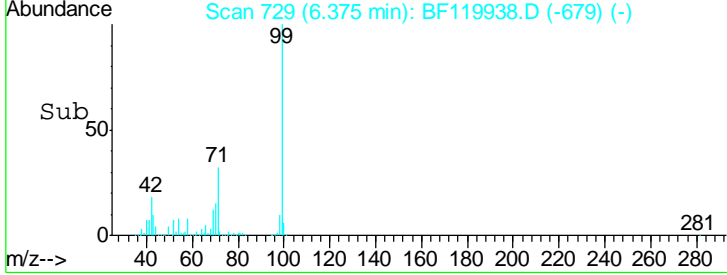
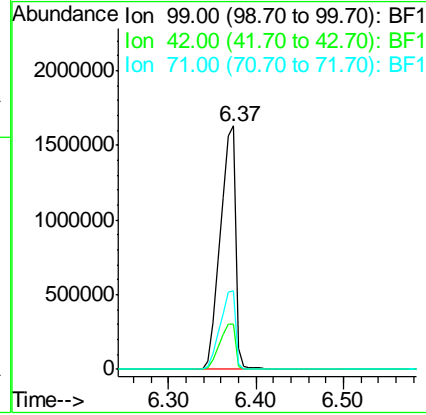
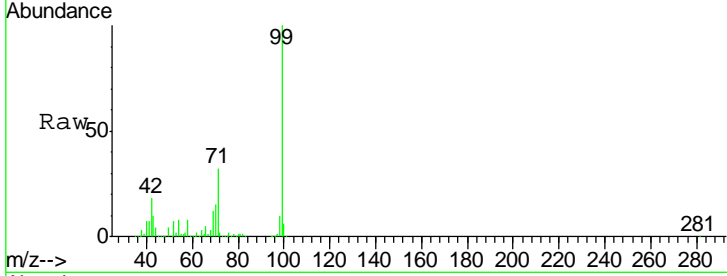




#7
 Phenol-d6
 Concen: 120.068 ng
 RT: 6.37 min Scan# 729
 Delta R.T. -0.01 min
 Lab File: BF119938.D
 Acq: 14 Apr 2020 6:38

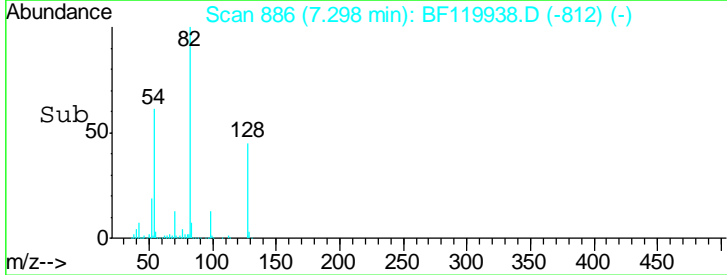
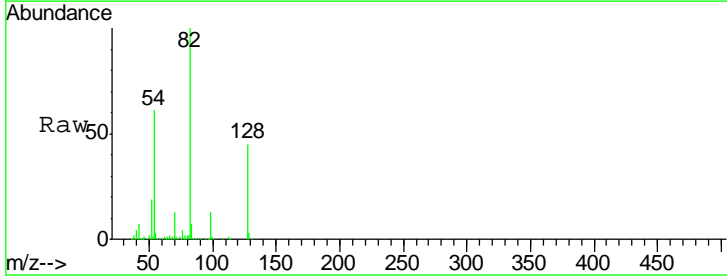
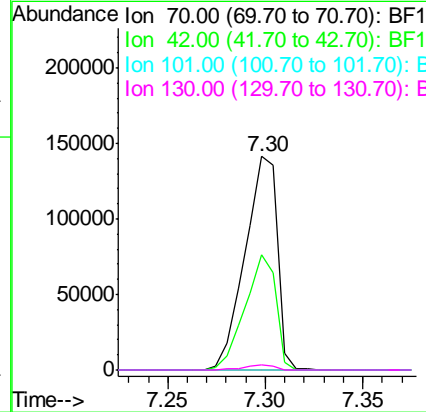
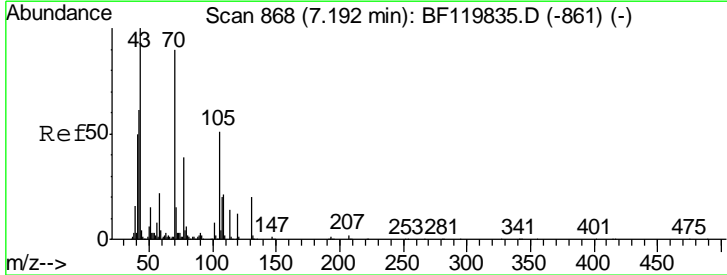
Instrument :
 BNA_F
 ClientSampled :

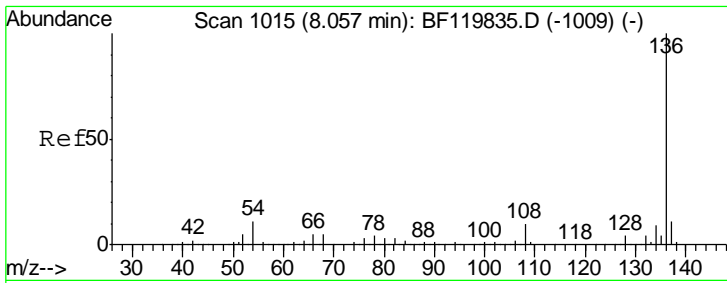
Tgt Ion	Resp	Lower	Upper
99	2002469		
42	18.3	16.9	25.3
71	32.2	26.3	39.5



#19
 n-Nitroso-di-n-propylamine
 Concen: 15.149 ng
 RT: 7.30 min Scan# 886
 Delta R.T. 0.14 min
 Lab File: BF119938.D
 Acq: 14 Apr 2020 6:38

Tgt Ion	Resp	Lower	Upper
70	162466		
42	53.7	54.2	81.4#
101	0.0	7.4	11.2#
130	2.2	17.8	26.6#



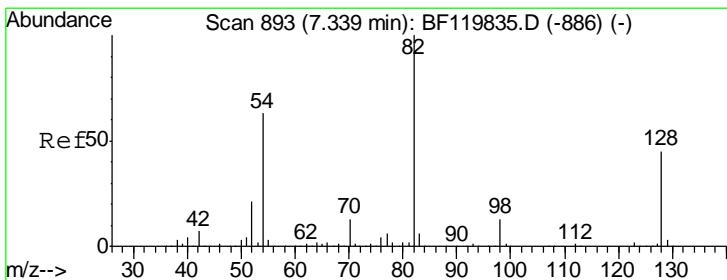
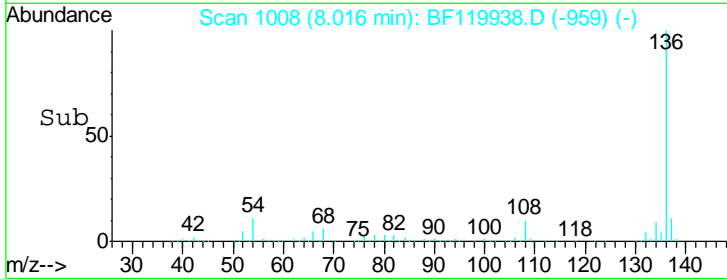
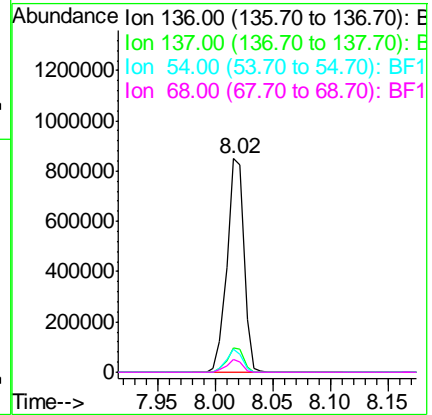
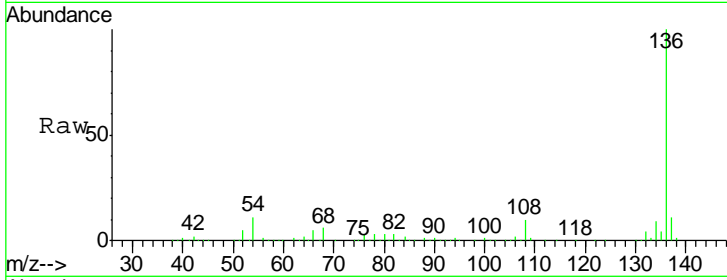


#21
 Naphthalene-d8
 Concen: 20.000 ng
 RT: 8.02 min Scan# 1008
 Delta R.T. -0.01 min
 Lab File: BF119938.D
 Acq: 14 Apr 2020 6:38

Instrument :
 BNA_F
 ClientSampled :

Tgt Ion: 136 Resp: 871495

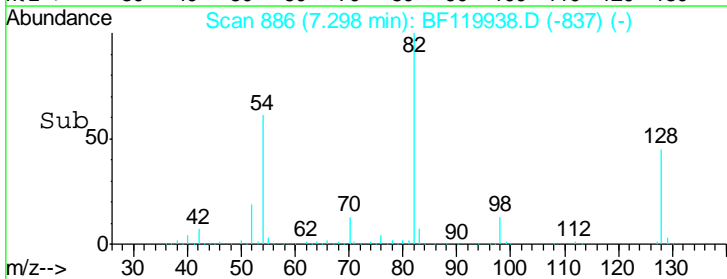
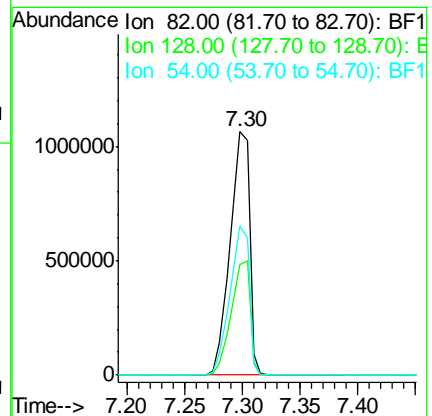
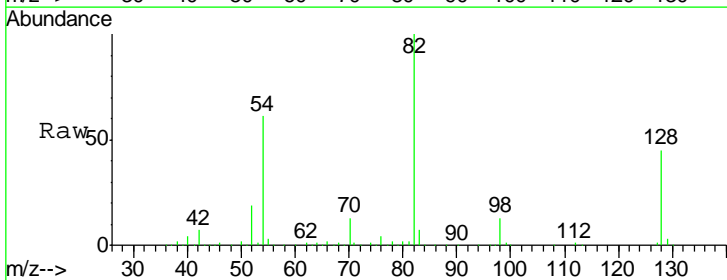
Ion	Ratio	Lower	Upper
136	100		
137	11.3	8.7	13.1
54	11.0	8.5	12.7
68	6.0	3.9	5.9#

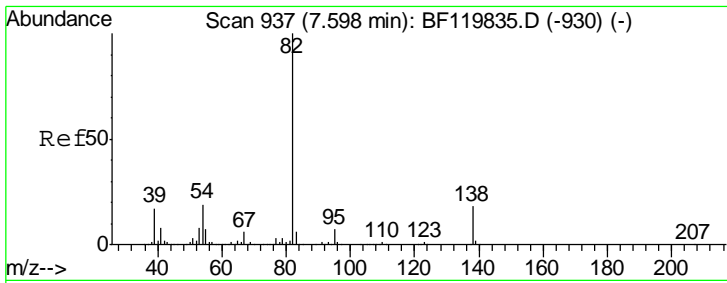


#23
 Nitrobenzene-d5
 Concen: 73.779 ng
 RT: 7.30 min Scan# 886
 Delta R.T. -0.01 min
 Lab File: BF119938.D
 Acq: 14 Apr 2020 6:38

Tgt Ion: 82 Resp: 1242874

Ion	Ratio	Lower	Upper
82	100		
128	45.2	36.2	54.4
54	61.4	50.4	75.6

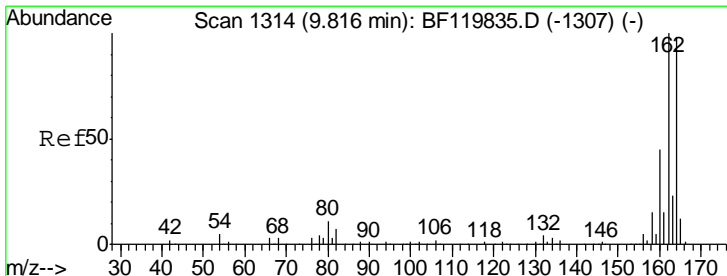
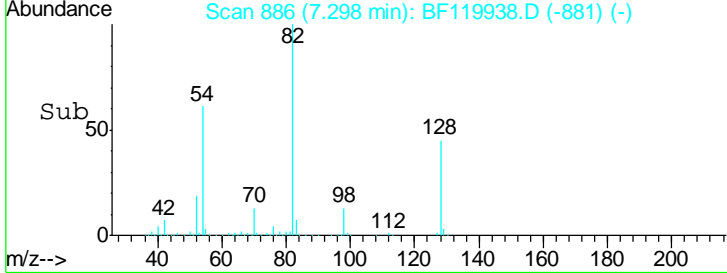
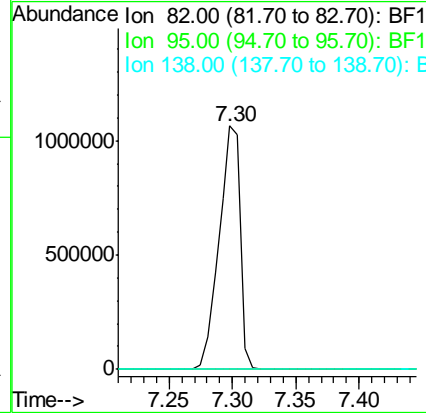
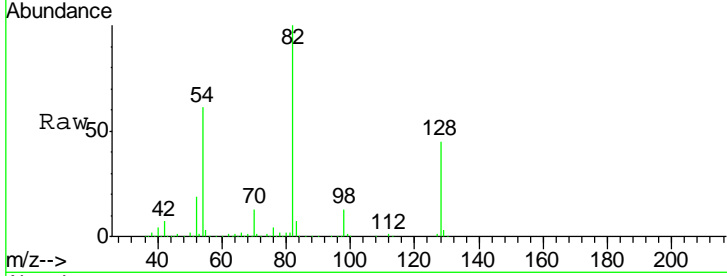




#25
 Isophorone
 Concen: 38.200 ng
 RT: 7.30 min Scan# 886
 Delta R.T. -0.27 min
 Lab File: BF119938.D
 Acq: 14 Apr 2020 6:38

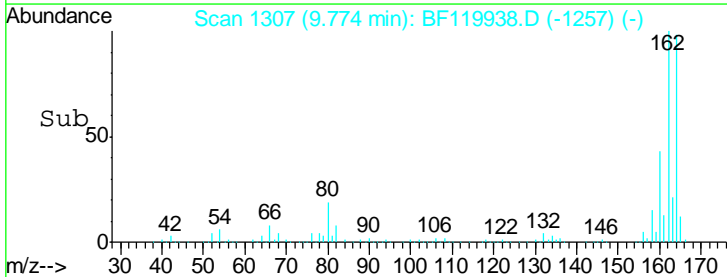
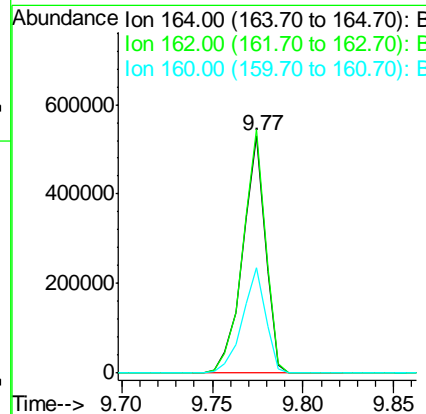
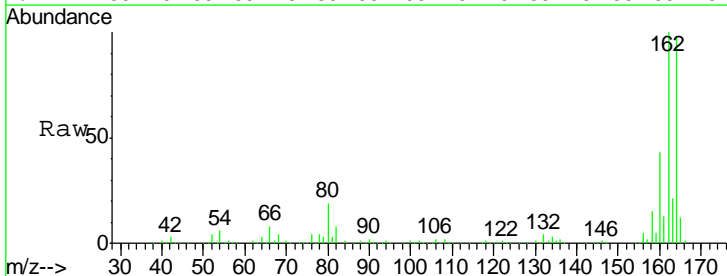
Instrument :
 BNA_F
 ClientSampled :

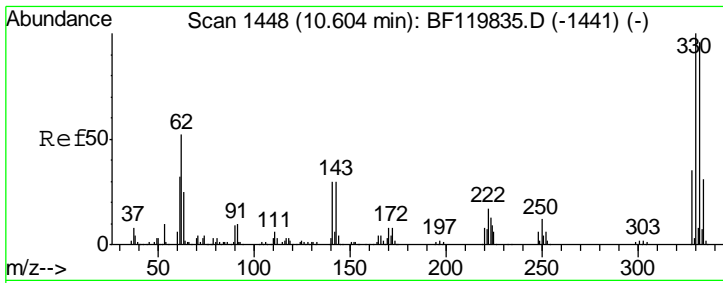
Tgt Ion	Resp	Lower	Upper
82	1240488		
95	0.0	5.8	8.6#
138	0.0	14.5	21.7#



#39
 Acenaphthene-d10
 Concen: 20.000 ng
 RT: 9.77 min Scan# 1307
 Delta R.T. -0.01 min
 Lab File: BF119938.D
 Acq: 14 Apr 2020 6:38

Tgt Ion	Resp	Lower	Upper
164	463602		
162	102.4	81.9	122.9
160	44.4	36.6	54.8

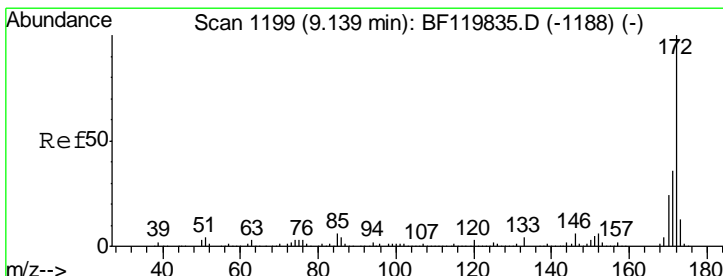
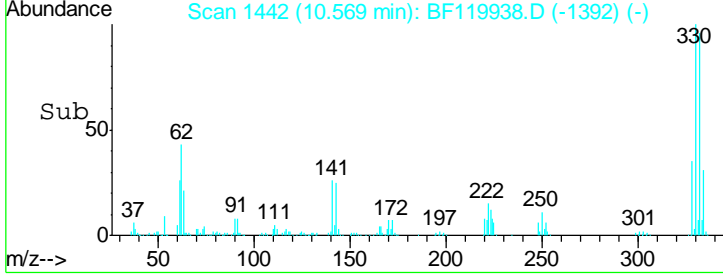
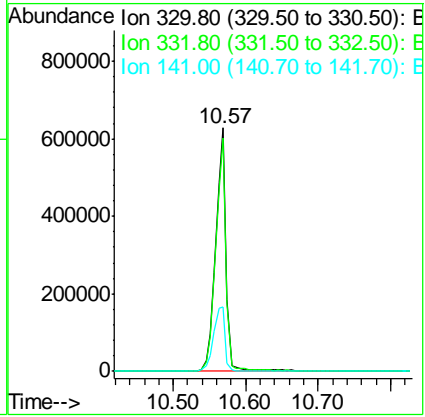
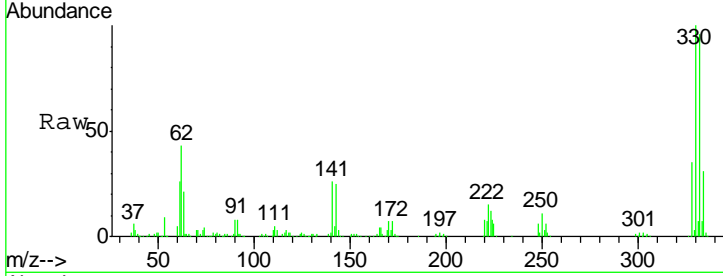




#42
 2,4,6-Tribromophenol
 Concen: 110.309 ng
 RT: 10.57 min Scan# 1442
 Delta R.T. -0.01 min
 Lab File: BF119938.D
 Acq: 14 Apr 2020 6:38

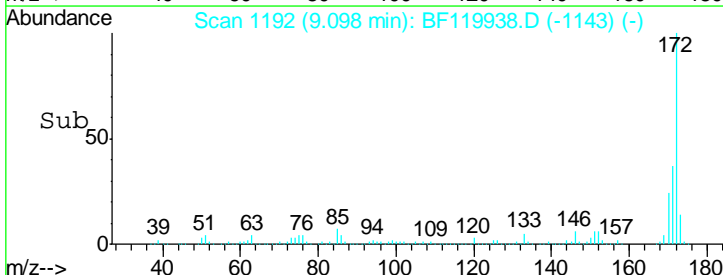
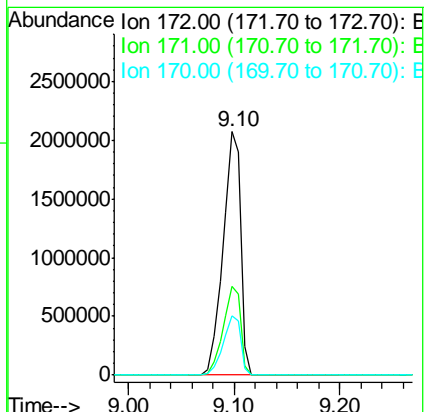
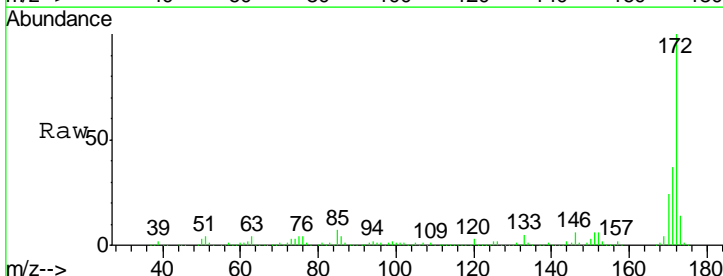
Instrument :
 BNA_F
 ClientSampled :

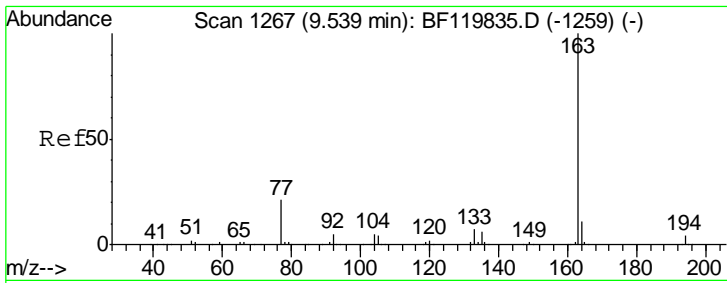
Tgt Ion	Resp	Lower	Upper
330	100		
332	94.5	76.8	115.2
141	29.7	25.1	37.7



#45
 2-Fluorobiphenyl
 Concen: 73.572 ng
 RT: 9.10 min Scan# 1192
 Delta R.T. -0.01 min
 Lab File: BF119938.D
 Acq: 14 Apr 2020 6:38

Tgt Ion	Resp	Lower	Upper
172	100		
171	36.5	28.9	43.3
170	24.2	19.4	29.2

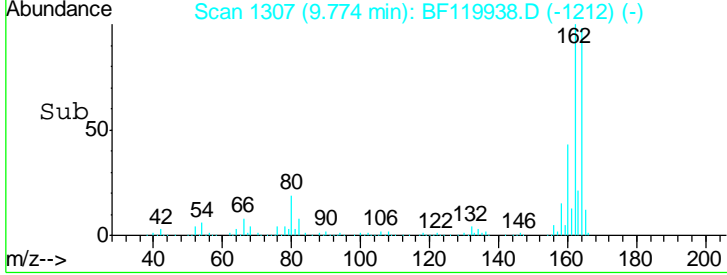
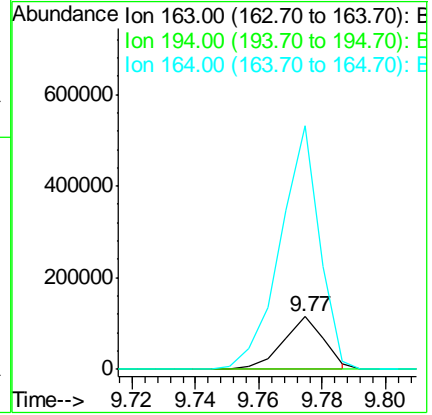
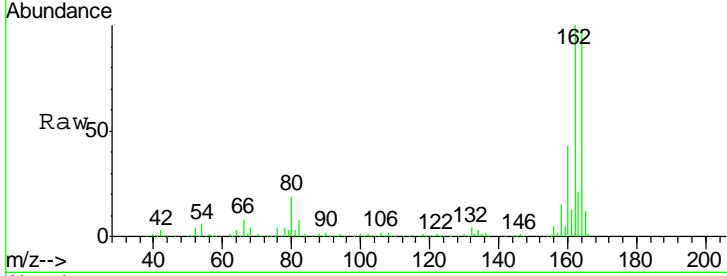




#50
 Dimethylphthalate
 Concen: 2.917 ng
 RT: 9.77 min Scan# 1307
 Delta R.T. 0.26 min
 Lab File: BF119938.D
 Acq: 14 Apr 2020 6:38

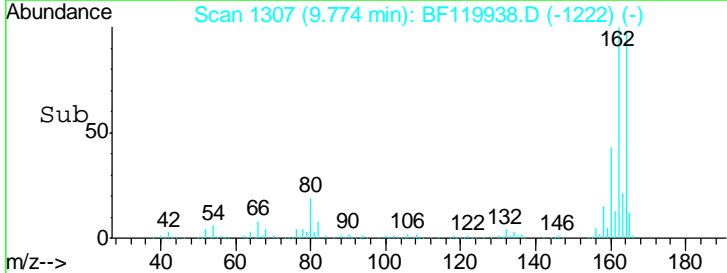
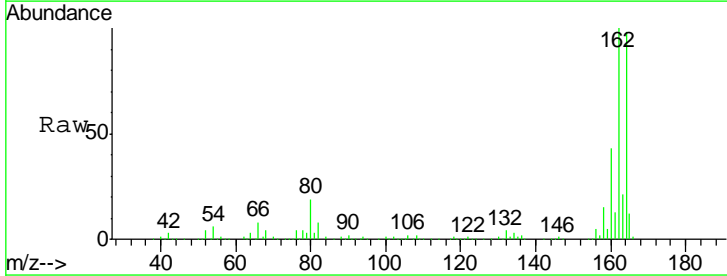
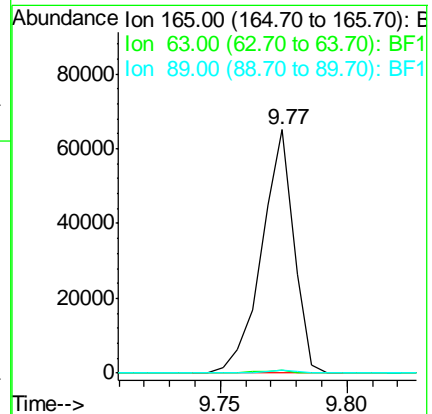
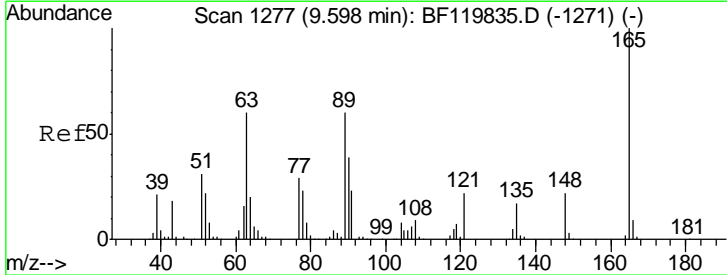
Instrument :
 BNA_F
 ClientSampled :

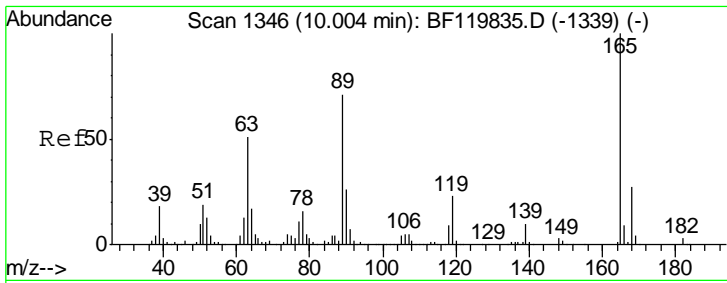
Tgt Ion	Resp	Lower	Upper
163	104585		
194	0.0	3.0	4.4#
164	461.5	8.4	12.6#



#51
 2,6-Dinitrotoluene
 Concen: 7.349 ng
 RT: 9.77 min Scan# 1307
 Delta R.T. 0.20 min
 Lab File: BF119938.D
 Acq: 14 Apr 2020 6:38

Tgt Ion	Resp	Lower	Upper
165	57707		
63	1.0	55.6	83.4#
89	1.5	47.9	71.9#

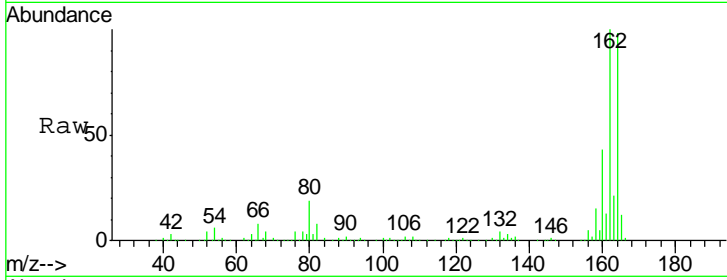




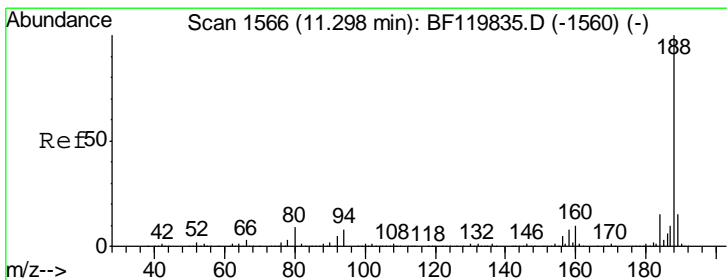
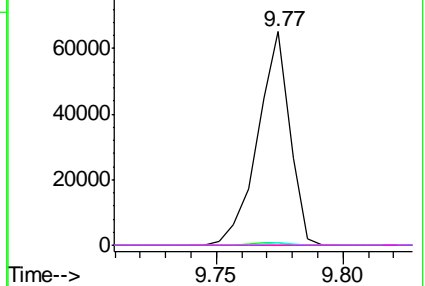
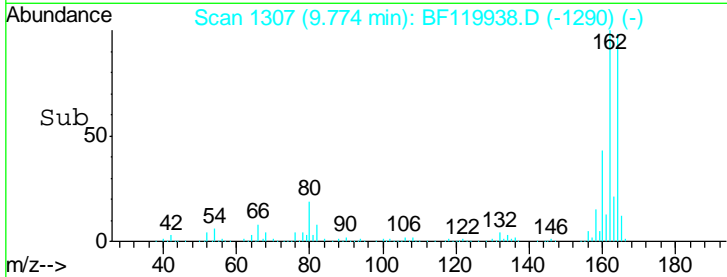
#57
 2,4-Dinitrotoluene
 Concen: 5.578 ng
 RT: 9.77 min Scan# 1307
 Delta R.T. -0.20 min
 Lab File: BF119938.D
 Acq: 14 Apr 2020 6:38

Instrument :
 BNA_F
 ClientSampled :

Tgt Ion	Resp	Lower	Upper
165	100		
63	1.0	40.8	61.2#
89	1.5	56.9	85.3#
182	0.0	2.0	3.0#

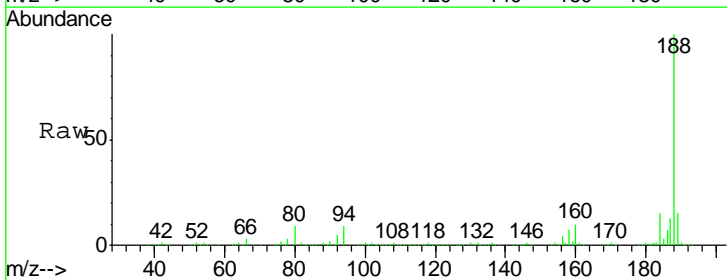


Abundance Ion 165.00 (164.70 to 165.70): E
 Ion 63.00 (62.70 to 63.70): BF1
 Ion 89.00 (88.70 to 89.70): BF1
 Ion 182.00 (181.70 to 182.70): E

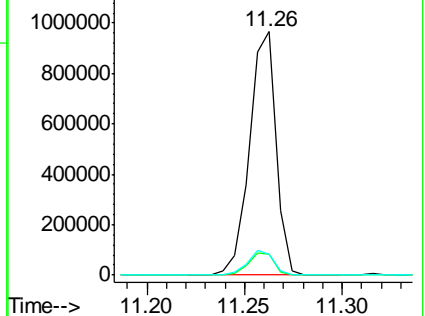
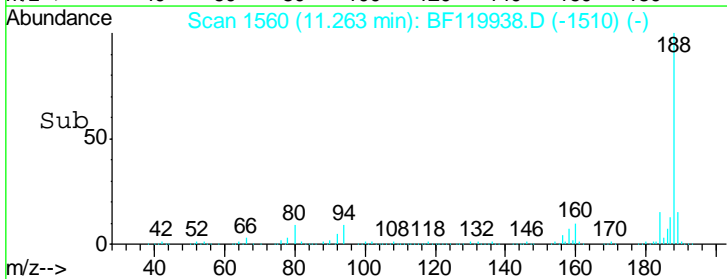


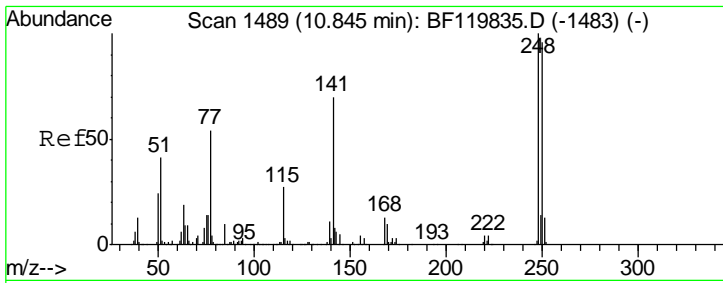
#64
 Phenanthrene-d10
 Concen: 20.000 ng
 RT: 11.26 min Scan# 1560
 Delta R.T. -0.01 min
 Lab File: BF119938.D
 Acq: 14 Apr 2020 6:38

Tgt Ion	Resp	Lower	Upper
188	100		
94	8.5	6.7	10.1
80	8.8	7.4	11.2



Abundance Ion 188.00 (187.70 to 188.70): E
 Ion 94.00 (93.70 to 94.70): BF1
 Ion 80.00 (79.70 to 80.70): BF1

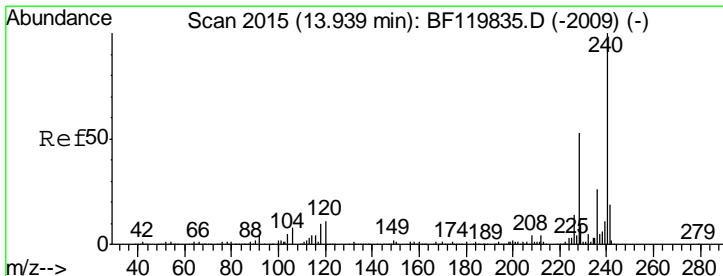
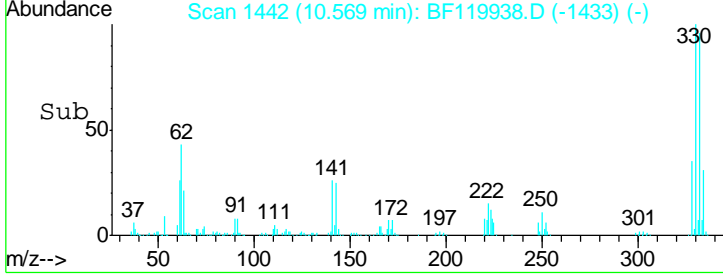
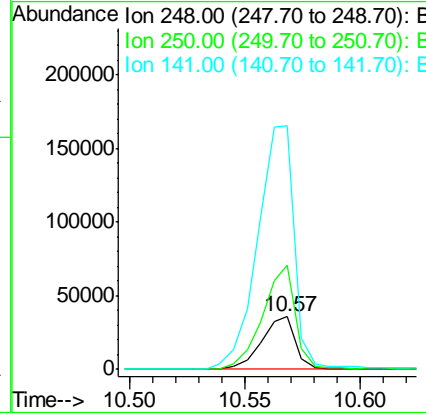
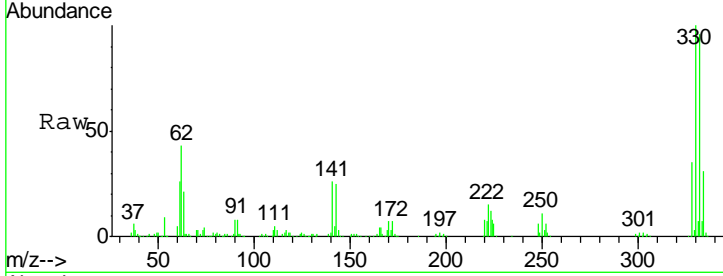




#67
 4-Bromophenyl-phenylether
 Concen: 3.196 ng
 RT: 10.57 min Scan# 1442
 Delta R.T. -0.25 min
 Lab File: BF119938.D
 Acq: 14 Apr 2020 6:38

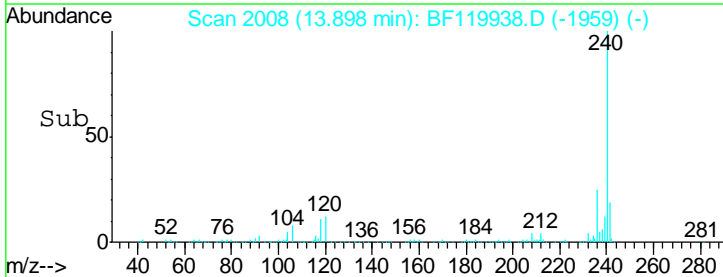
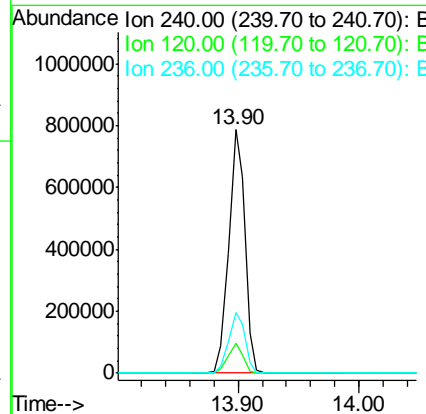
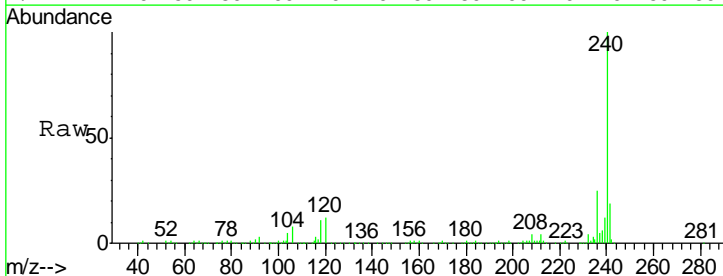
Instrument :
 BNA_F
 ClientSampled :

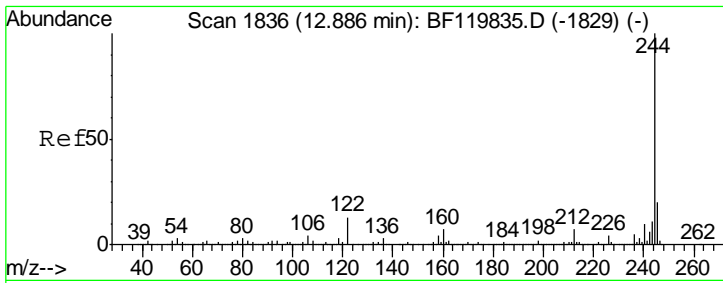
Tgt Ion	Resp	Lower	Upper
248	36289		
250	198.4	76.6	114.8#
141	465.3	55.9	83.9#



#76
 Chrysene-d12
 Concen: 20.000 ng
 RT: 13.90 min Scan# 2008
 Delta R.T. -0.01 min
 Lab File: BF119938.D
 Acq: 14 Apr 2020 6:38

Tgt Ion	Resp	Lower	Upper
240	725904		
120	12.0	9.0	13.6
236	24.7	20.7	31.1



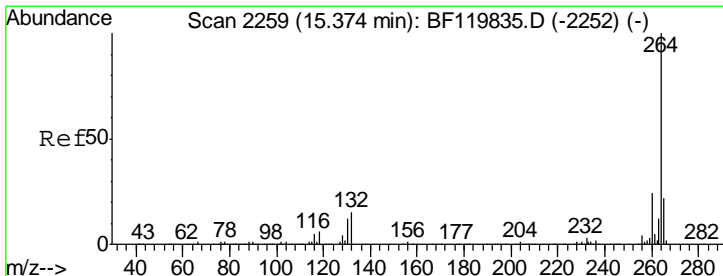
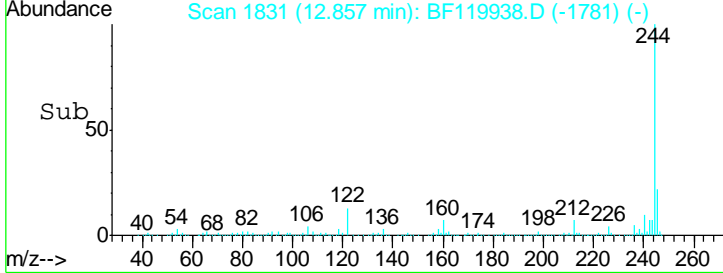
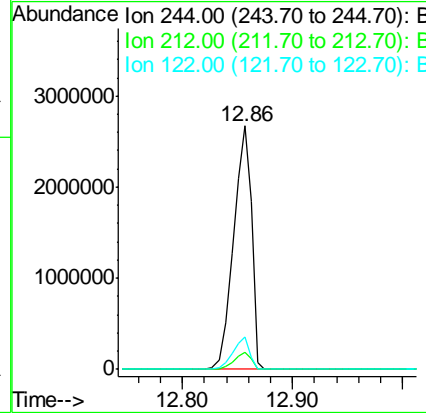
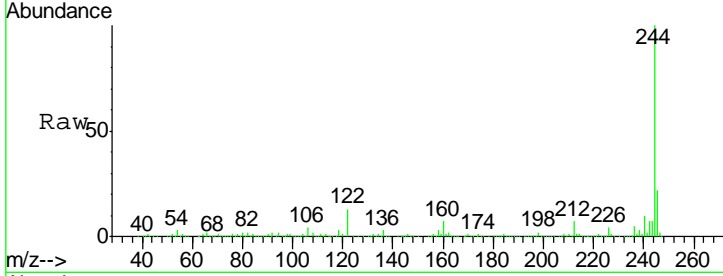


#79
 Terphenyl-d14
 Concen: 70.479 ng
 RT: 12.86 min Scan# 1831
 Delta R.T. -0.01 min
 Lab File: BF119938.D
 Acq: 14 Apr 2020 6:38

Instrument :
 BNA_F
 ClientSampled :

Tgt Ion: 244 Resp: 3040488

Ion	Ratio	Lower	Upper
244	100		
212	6.9	5.4	8.0
122	13.1	10.3	15.5



#87
 Perylene-d12
 Concen: 20.000 ng
 RT: 15.33 min Scan# 2251
 Delta R.T. -0.01 min
 Lab File: BF119938.D
 Acq: 14 Apr 2020 6:38

Tgt Ion: 264 Resp: 636359

Ion	Ratio	Lower	Upper
264	100		
260	23.8	19.3	28.9
265	21.6	17.6	26.4

