

Data Path : Z:\svoasrv\HPCHEM1\BNA_F\Data\BF043025\
 Data File : BF142240.D
 Acq On : 30 Apr 2025 11:52
 Operator : RC/JU
 Sample : SSTDICC005
 Misc :
 ALS Vial : 3 Sample Multiplier: 1

Instrument :
 BNA_F
 ClientSampleId :
 SSTDICC005

Manual Integrations
 APPROVED

Reviewed By :Rahul Chavli 05/01/2025
 Supervised By :Jagrut Upadhyay 05/01/2025

Quant Time: Apr 30 15:40:24 2025
 Quant Method : Z:\svoasrv\HPCHEM1\BNA_F\Methods\8270-BF043025.M
 Quant Title : ASP BNA STANDARDS FOR 5 POINT CALIBRATION
 QLast Update : Wed Apr 30 15:28:40 2025
 Response via : Initial Calibration

Compound	R.T.	QIon	Response	Conc	Units	Dev(Min)
Internal Standards						
1) 1,4-Dichlorobenzene-d4	6.910	152	187794	20.000	ng	0.00
21) Naphthalene-d8	8.192	136	726978	20.000	ng	0.00
39) Acenaphthene-d10	9.945	164	380022	20.000	ng	0.00
64) Phenanthrene-d10	11.433	188	664931	20.000	ng	0.00
76) Chrysene-d12	14.074	240	454911	20.000	ng	0.00
86) Perylene-d12	15.568	264	322126	20.000	ng	0.00
System Monitoring Compounds						
5) 2-Fluorophenol	5.510	112	124307	10.571	ng	0.00
7) Phenol-d6	6.510	99	146414	10.311	ng	-0.02
23) Nitrobenzene-d5	7.463	82	78765	7.118	ng	-0.01
42) 2,4,6-Tribromophenol	10.727	330	26375	7.613	ng	0.00
45) 2-Fluorobiphenyl	9.263	172	330323	12.256	ng	0.00
79) Terphenyl-d14	13.016	244	334852	10.706	ng	0.00
Target Compounds						
2) 1,4-Dioxane	2.699	88	26443	5.035	ng	97
3) Pyridine	3.469	79	68779	5.039	ng	99
4) n-Nitrosodimethylamine	3.393	42	35057	4.963	ng	# 97
6) Aniline	6.563	93	103866	5.168	ng	99
8) 2-Chlorophenol	6.687	128	58780	4.838	ng	99
9) Benzaldehyde	6.457	77	54160	5.457	ng	98
10) Phenol	6.528	94	78823	5.157	ng	96
11) bis(2-Chloroethyl)ether	6.634	93	63148	5.331	ng	99
12) 1,3-Dichlorobenzene	6.845	146	73777	5.367	ng	100
13) 1,4-Dichlorobenzene	6.928	146	75604	5.459	ng	97
14) 1,2-Dichlorobenzene	7.075	146	69920	5.289	ng	99
15) Benzyl Alcohol	7.039	79	49136	4.879	ng	97
16) 2,2'-oxybis(1-Chloropr...	7.181	45	111179	5.198	ng	100
17) 2-Methylphenol	7.145	107	50945	5.118	ng	98
18) Hexachloroethane	7.422	117	21958	4.844	ng	96
19) n-Nitroso-di-n-propyla...	7.310	70	46341	5.281	ng	99
20) 3+4-Methylphenols	7.292	107	63725	5.119	ng	93
22) Acetophenone	7.310	105	92806	5.518	ng	96
24) Nitrobenzene	7.481	77	41660	3.837	ng	94
25) Isophorone	7.722	82	119954	5.165	ng	100
26) 2-Nitrophenol	7.804	139	8775	6.901	ng	99
27) 2,4-Dimethylphenol	7.828	122	57217	4.887	ng	97
28) bis(2-Chloroethoxy)met...	7.934	93	77155	5.268	ng	100
29) 2,4-Dichlorophenol	8.034	162	44643	4.560	ng	98
30) 1,2,4-Trichlorobenzene	8.128	180	58177	5.326	ng	99
31) Naphthalene	8.210	128	200969	5.543	ng	99
33) 4-Chloroaniline	8.251	127	81024	5.367	ng	98
34) Hexachlorobutadiene	8.334	225	32676	5.127	ng	97
35) Caprolactam	8.575	113	12427	4.223	ng	100
36) 4-Chloro-3-methylphenol	8.722	107	47673	4.743	ng	99
37) 2-Methylnaphthalene	8.904	142	123458	5.539	ng	97
38) 1-Methylnaphthalene	8.998	142	127274	5.512	ng	99
40) 1,2,4,5-Tetrachloroben...	9.063	216	58967	5.513	ng	97
41) Hexachlorocyclopentadiene	9.057	237	23228	3.827	ng	98
43) 2,4,6-Trichlorophenol	9.175	196	26171	3.949	ng	98
44) 2,4,5-Trichlorophenol	9.204	196	30587	4.390	ng	95

Data Path : Z:\svoasrv\HPCHEM1\BNA_F\Data\BF043025\
 Data File : BF142240.D
 Acq On : 30 Apr 2025 11:52
 Operator : RC/JU
 Sample : SSTDICC005
 Misc :
 ALS Vial : 3 Sample Multiplier: 1

Instrument :
 BNA_F
 ClientSampleId :
 SSTDICC005

Manual Integrations
 APPROVED

Reviewed By :Rahul Chavli 05/01/2025
 Supervised By :Jagrut Upadhyay 05/01/2025

Quant Time: Apr 30 15:40:24 2025
 Quant Method : Z:\svoasrv\HPCHEM1\BNA_F\Methods\8270-BF043025.M
 Quant Title : ASP BNA STANDARDS FOR 5 POINT CALIBRATION
 QLast Update : Wed Apr 30 15:28:40 2025
 Response via : Initial Calibration

Compound	R.T.	QIon	Response	Conc	Units	Dev(Min)
46) 1,1'-Biphenyl	9.363	154	168456	5.702	ng	98
47) 2-Chloronaphthalene	9.386	162	122469	5.572	ng	98
48) 2-Nitroaniline	9.475	65	11346	6.532	ng	89
49) Acenaphthylene	9.804	152	204157	5.504	ng	99
50) Dimethylphthalate	9.657	163	129376	5.322	ng	100
51) 2,6-Dinitrotoluene	9.716	165	9271	5.846	ng #	81
52) Acenaphthene	9.975	154	120775	5.577	ng	99
53) 3-Nitroaniline	9.886	138	13576	5.423	ng #	88
55) Dibenzofuran	10.151	168	183405	5.649	ng	98
57) 2,4-Dinitrotoluene	10.116	165	9928	6.601	ng #	85
58) Fluorene	10.492	166	141835	5.746	ng	98
59) 2,3,4,6-Tetrachlorophenol	10.263	232	23974m	4.154	ng	
60) Diethylphthalate	10.363	149	125748	5.238	ng	99
61) 4-Chlorophenyl-phenyle...	10.486	204	66676	5.688	ng	98
62) 4-Nitroaniline	10.492	138	13695	5.254	ng #	76
63) Azobenzene	10.645	77	127873	5.394	ng	99
66) n-Nitrosodiphenylamine	10.598	169	120800	5.317	ng	100
67) 4-Bromophenyl-phenylether	10.975	248	37248	5.030	ng	97
68) Hexachlorobenzene	11.039	284	42558	5.131	ng	98
69) Atrazine	11.122	200	27629	4.614	ng	98
71) Phenanthrene	11.457	178	202460	5.637	ng	98
72) Anthracene	11.504	178	200946	5.472	ng	98
73) Carbazole	11.657	167	186963	5.581	ng	98
74) Di-n-butylphthalate	11.998	149	163860	4.864	ng	99
75) Fluoranthene	12.645	202	202911	5.715	ng	98
77) Benzidine	12.769	184	79877	4.132	ng	98
78) Pyrene	12.874	202	208462	4.968	ng	99
80) Butylbenzylphthalate	13.498	149	24840	5.714	ng	96
81) Benzo(a)anthracene	14.063	228	156840	5.136	ng	99
82) 3,3'-Dichlorobenzidine	14.027	252	32503	3.623	ng	94
83) Chrysene	14.098	228	148119	5.328	ng	98
84) Bis(2-ethylhexyl)phtha...	14.063	149	43692	6.006	ng	99
87) Indeno(1,2,3-cd)pyrene	17.068	276	106554	4.516	ng	98
88) Benzo(b)fluoranthene	15.121	252	106072	5.301	ng	100
89) Benzo(k)fluoranthene	15.151	252	97496	5.327	ng	99
90) Benzo(a)pyrene	15.498	252	90284	4.928	ng	99
91) Dibenzo(a,h)anthracene	17.086	278	86557	4.520	ng	100
92) Benzo(g,h,i)perylene	17.521	276	86631	4.500	ng	99

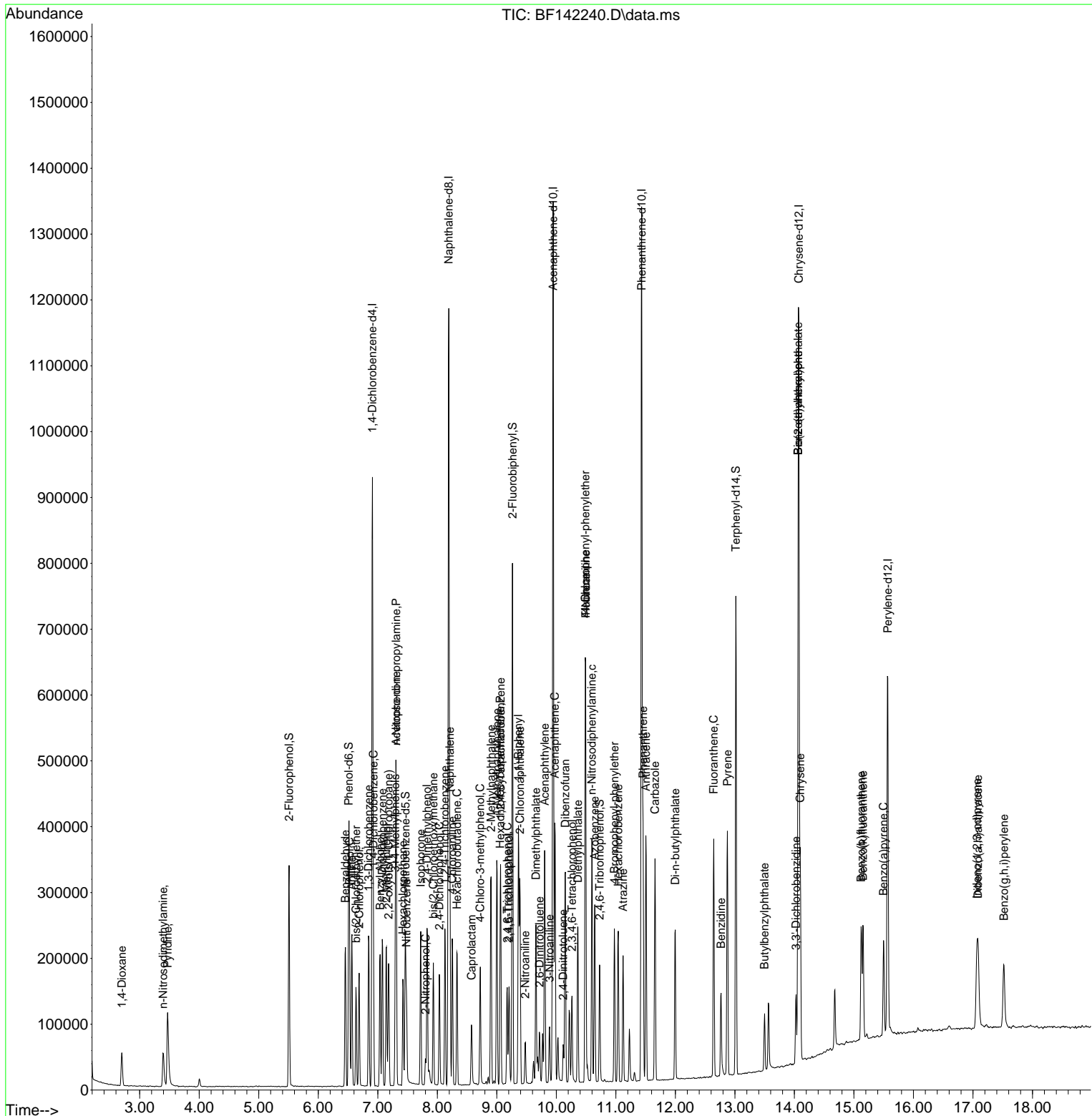
(#) = qualifier out of range (m) = manual integration (+) = signals summed

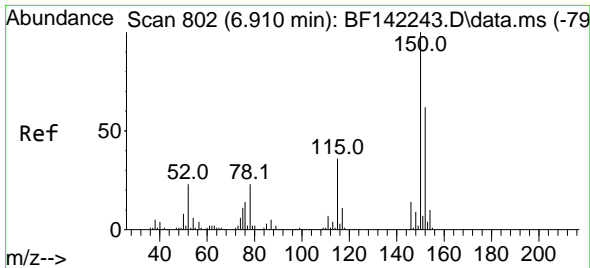
Data Path : Z:\svoasrv\HPCHEM1\BNA_F\Data\BF043025\
 Data File : BF142240.D
 Acq On : 30 Apr 2025 11:52
 Operator : RC/JU
 Sample : SSTDICC005
 Misc :
 ALS Vial : 3 Sample Multiplier: 1

Instrument :
 BNA_F
 ClientSampleId :
 SSTDICC005

Quant Time: Apr 30 15:40:24 2025
 Quant Method : Z:\svoasrv\HPCHEM1\BNA_F\Methods\8270-BF043025.M
 Quant Title : ASP BNA STANDARDS FOR 5 POINT CALIBRATION
 QLast Update : Wed Apr 30 15:28:40 2025
 Response via : Initial Calibration

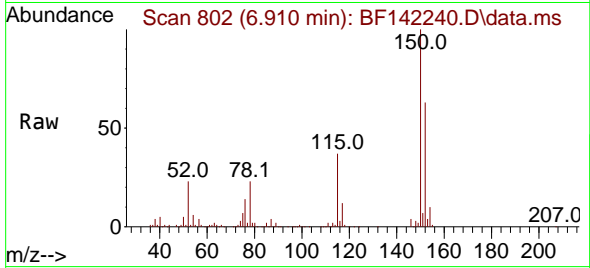
Manual Integrations
APPROVED
 Reviewed By :Rahul Chavli 05/01/2025
 Supervised By :Jagrut Upadhyay 05/01/2025





#1
 1,4-Dichlorobenzene-d4
 Concen: 20.000 ng
 RT: 6.910 min Scan# 802
 Delta R.T. 0.000 min
 Lab File: BF142240.D
 Acq: 30 Apr 2025 11:52

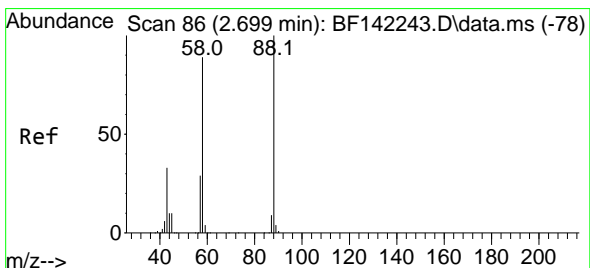
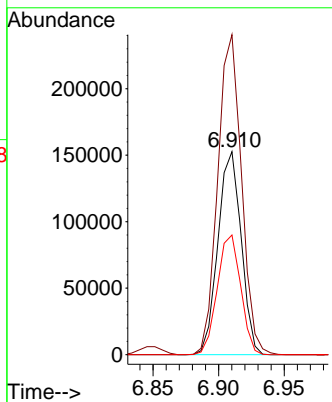
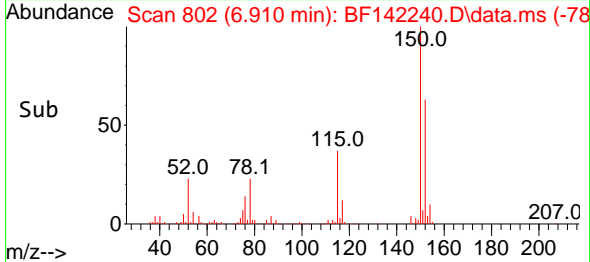
Instrument :
 BNA_F
 ClientSampleId :
 SSTDICC005



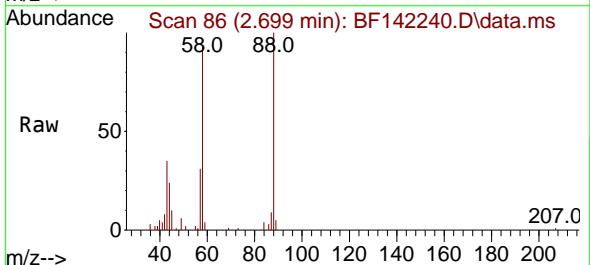
Tgt Ion:152 Resp: 187794
 Ion Ratio Lower Upper
 152 100
 150 157.6 130.2 195.2
 115 58.9 47.0 70.4

Manual Integrations
 APPROVED

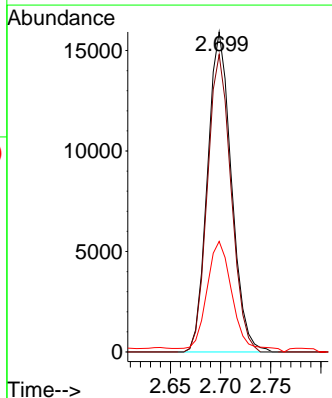
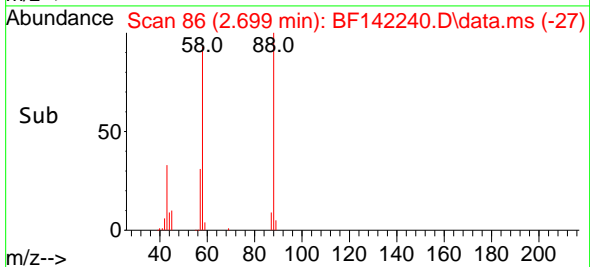
Reviewed By :Rahul Chavli 05/01/2025
 Supervised By :Jagrut Upadhyay 05/01/2025

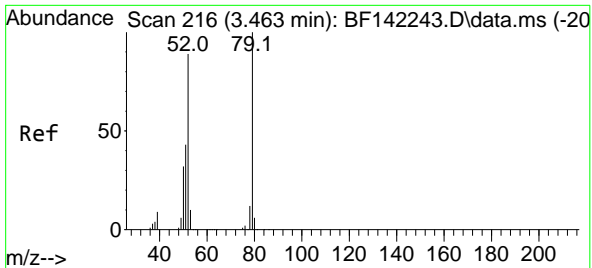


#2
 1,4-Dioxane
 Concen: 5.035 ng
 RT: 2.699 min Scan# 86
 Delta R.T. -0.000 min
 Lab File: BF142240.D
 Acq: 30 Apr 2025 11:52



Tgt Ion: 88 Resp: 26443
 Ion Ratio Lower Upper
 88 100
 58 91.8 72.2 108.2
 43 37.4 27.0 40.6





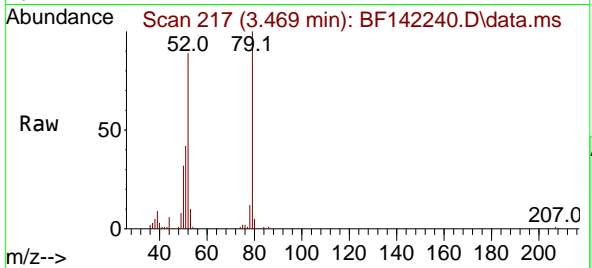
#3
 Pyridine
 Concen: 5.039 ng
 RT: 3.469 min Scan# 216
 Delta R.T. 0.006 min
 Lab File: BF142240.D
 Acq: 30 Apr 2025 11:52

Instrument :

BNA_F

ClientSampleId :

SSTDICC005



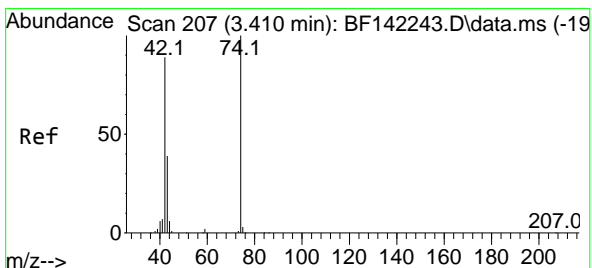
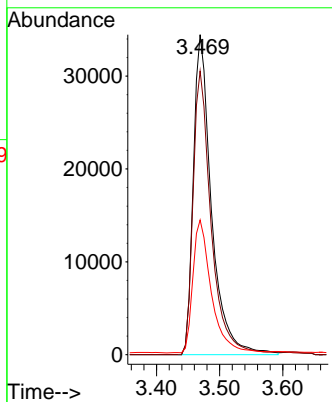
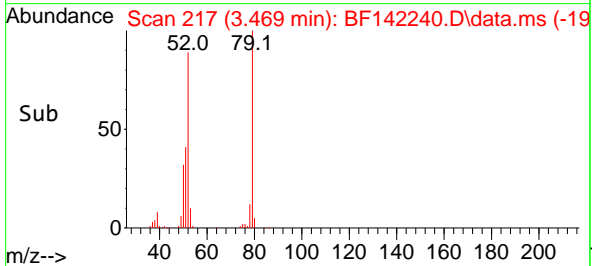
Tgt Ion: 79 Resp: 68779
 Ion Ratio Lower Upper
 79 100
 52 88.7 71.5 107.3
 51 42.1 34.5 51.7

Manual Integrations

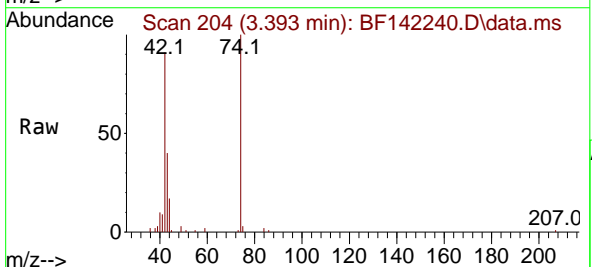
APPROVED

Reviewed By :Rahul Chavli 05/01/2025

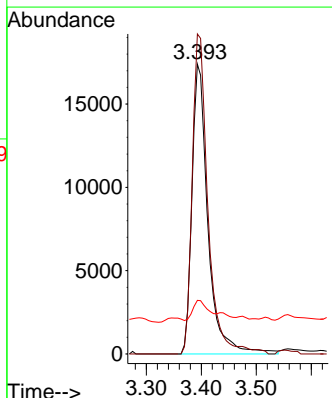
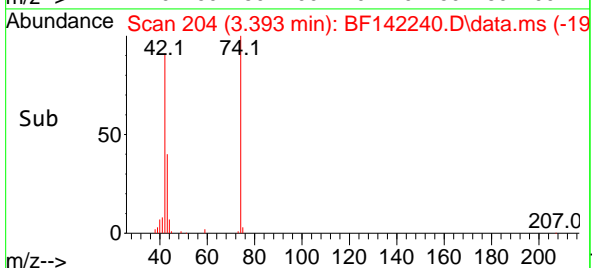
Supervised By :Jagrut Upadhyay 05/01/2025

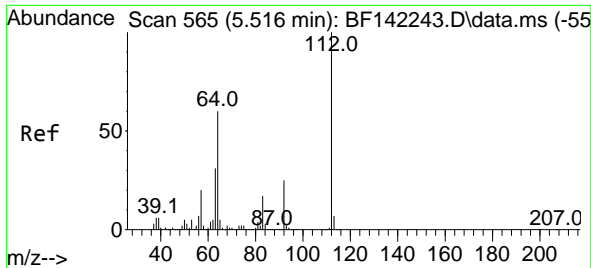


#4
 n-Nitrosodimethylamine
 Concen: 4.963 ng
 RT: 3.393 min Scan# 204
 Delta R.T. -0.018 min
 Lab File: BF142240.D
 Acq: 30 Apr 2025 11:52



Tgt Ion: 42 Resp: 35057
 Ion Ratio Lower Upper
 42 100
 74 110.4 89.5 134.3
 44 18.5 6.6 9.8





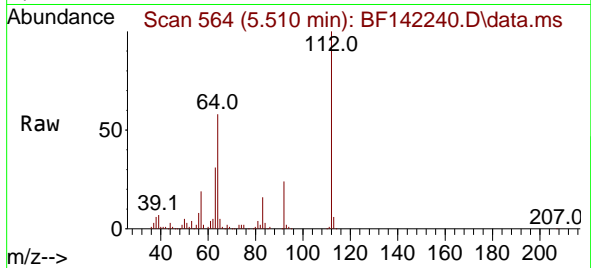
#5
 2-Fluorophenol
 Concen: 10.571 ng
 RT: 5.510 min Scan# 50
 Delta R.T. -0.006 min
 Lab File: BF142240.D
 Acq: 30 Apr 2025 11:52

Instrument :

BNA_F

ClientSampleId :

SSTDICC005



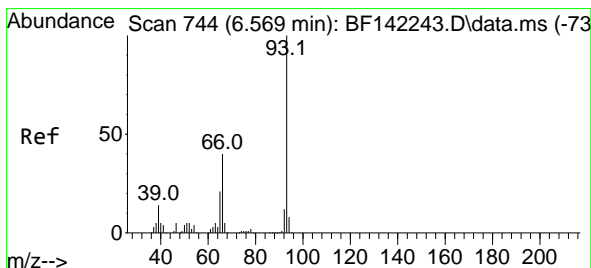
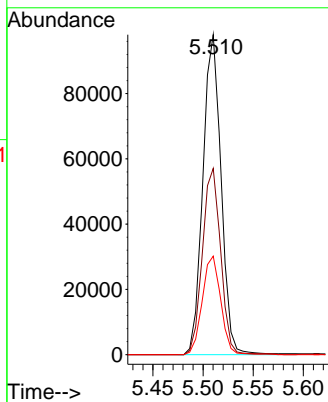
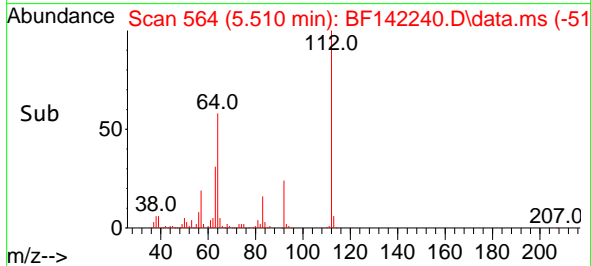
Tgt Ion:112 Resp: 12430
 Ion Ratio Lower Upper
 112 100
 64 58.2 48.4 72.6
 63 30.8 24.8 37.2

Manual Integrations

APPROVED

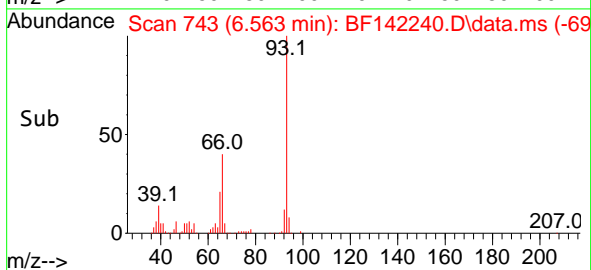
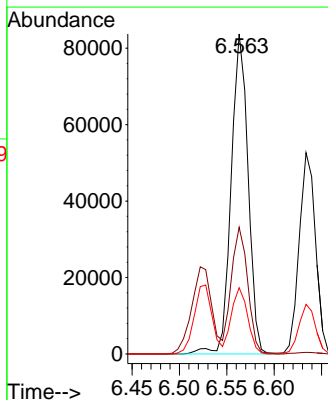
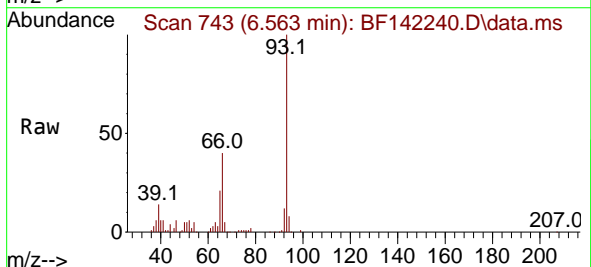
Reviewed By :Rahul Chavli 05/01/2025

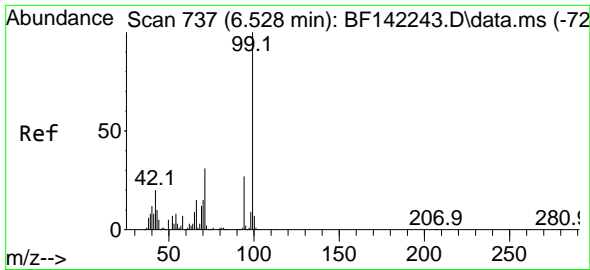
Supervised By :Jagrut Upadhyay 05/01/2025



#6
 Aniline
 Concen: 5.168 ng
 RT: 6.563 min Scan# 743
 Delta R.T. -0.006 min
 Lab File: BF142240.D
 Acq: 30 Apr 2025 11:52

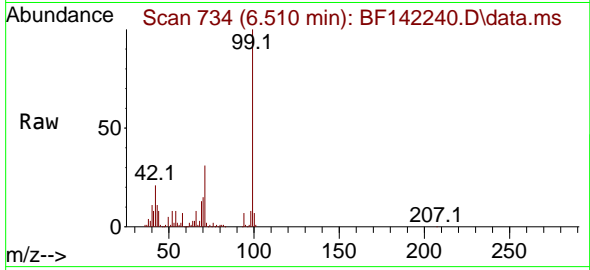
Tgt Ion: 93 Resp: 103866
 Ion Ratio Lower Upper
 93 100
 66 39.6 32.1 48.1
 65 20.7 16.6 24.8





#7
Phenol-d6
Concen: 10.311 ng
RT: 6.510 min Scan# 710
Delta R.T. -0.018 min
Lab File: BF142240.D
Acq: 30 Apr 2025 11:52

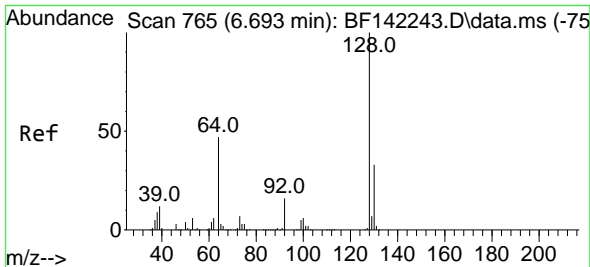
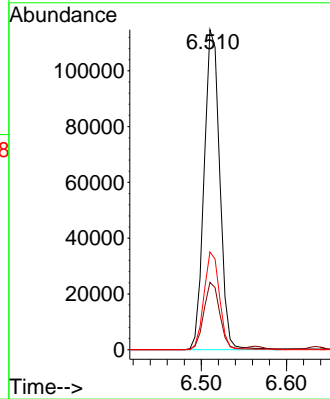
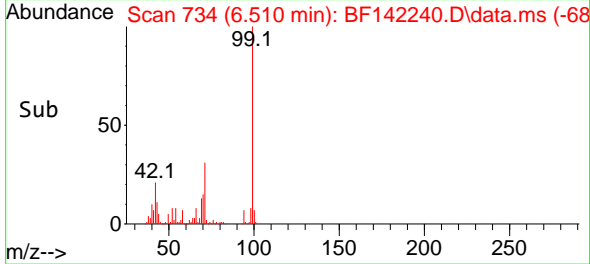
Instrument :
BNA_F
Client Sample Id :
SSTDICC005



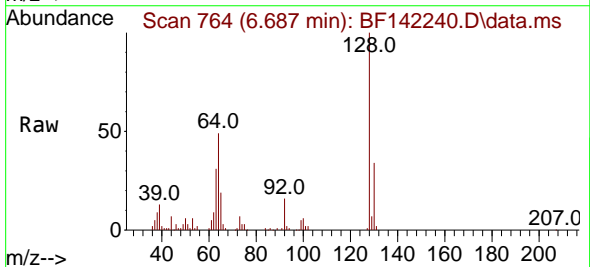
Tgt Ion: 99 Resp: 146414
Ion Ratio Lower Upper
99 100
42 21.1 16.3 24.5
71 30.6 25.0 37.4

Manual Integrations
APPROVED

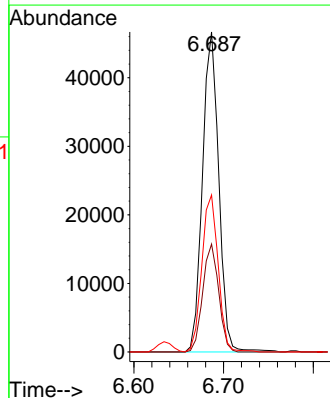
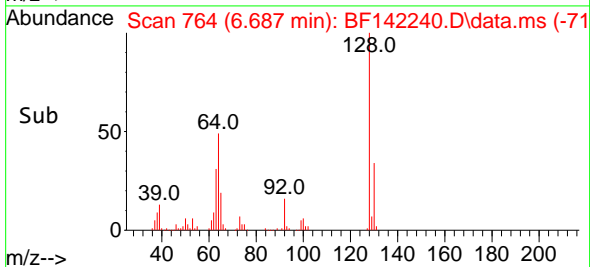
Reviewed By :Rahul Chavli 05/01/2025
Supervised By :Jagrut Upadhyay 05/01/2025

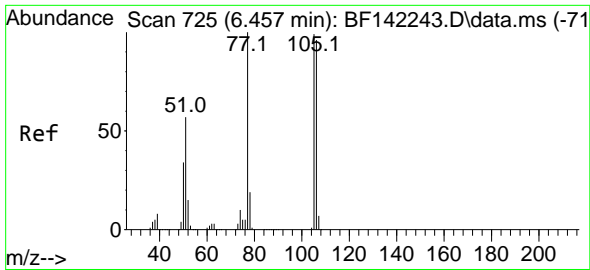


#8
2-Chlorophenol
Concen: 4.838 ng
RT: 6.687 min Scan# 764
Delta R.T. -0.006 min
Lab File: BF142240.D
Acq: 30 Apr 2025 11:52



Tgt Ion:128 Resp: 58780
Ion Ratio Lower Upper
128 100
130 33.7 13.1 53.1
64 49.0 28.6 68.6





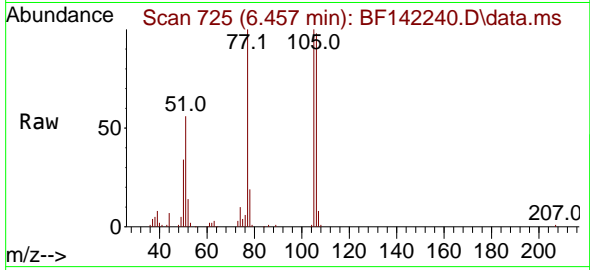
#9
Benzaldehyde
Concen: 5.457 ng
RT: 6.457 min Scan# 71
Delta R.T. -0.000 min
Lab File: BF142240.D
Acq: 30 Apr 2025 11:52

Instrument :

BNA_F

ClientSampleId :

SSTDICC005



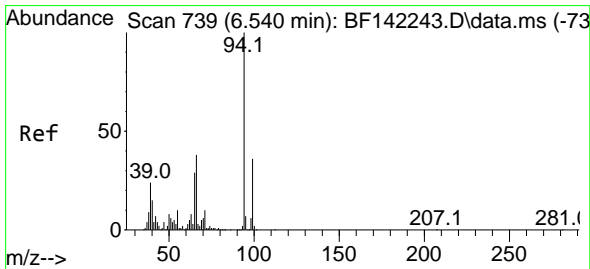
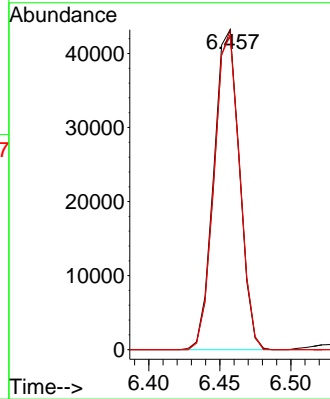
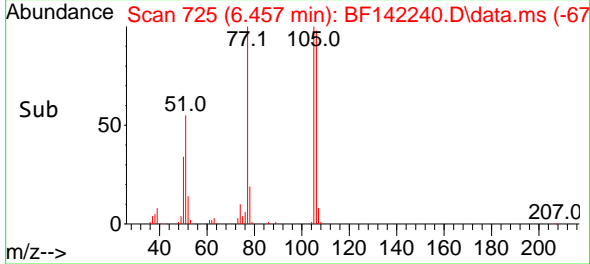
Tgt Ion: 77 Resp: 54160
Ion Ratio Lower Upper
77 100
105 99.9 79.1 119.1
106 98.3 76.0 116.0

Manual Integrations

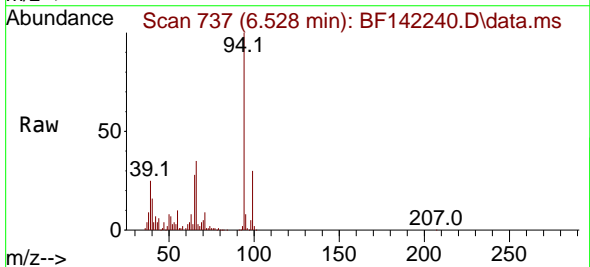
APPROVED

Reviewed By :Rahul Chavli 05/01/2025

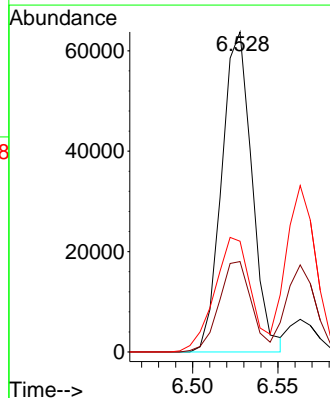
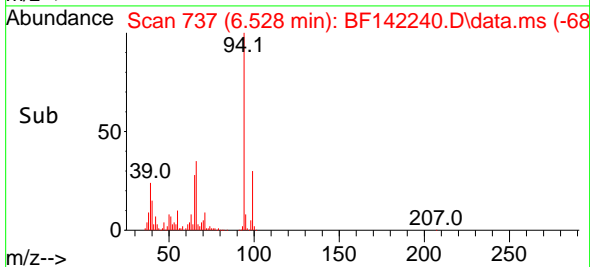
Supervised By :Jagrut Upadhyay 05/01/2025

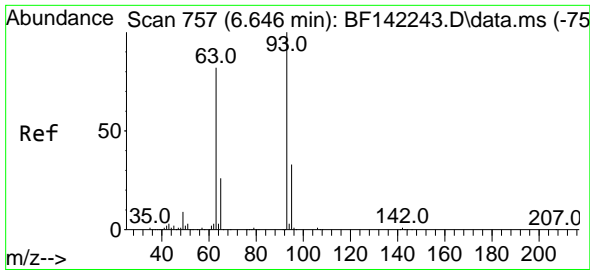


#10
Phenol
Concen: 5.157 ng
RT: 6.528 min Scan# 737
Delta R.T. -0.012 min
Lab File: BF142240.D
Acq: 30 Apr 2025 11:52



Tgt Ion: 94 Resp: 78823
Ion Ratio Lower Upper
94 100
65 28.3 8.9 48.9
66 34.6 18.7 58.7





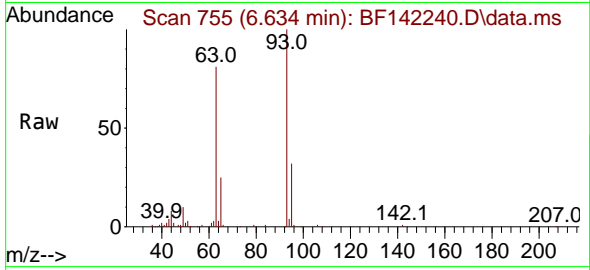
#11
 bis(2-Chloroethyl)ether
 Concen: 5.331 ng
 RT: 6.634 min Scan# 711
 Delta R.T. -0.012 min
 Lab File: BF142240.D
 Acq: 30 Apr 2025 11:52

Instrument :

BNA_F

ClientSampleId :

SSTDICC005



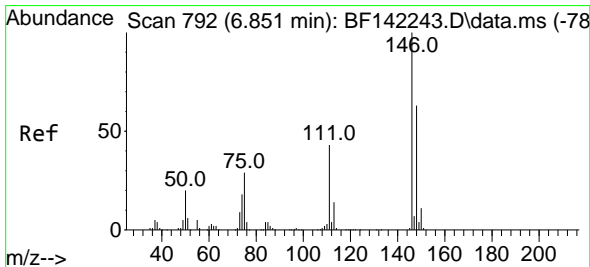
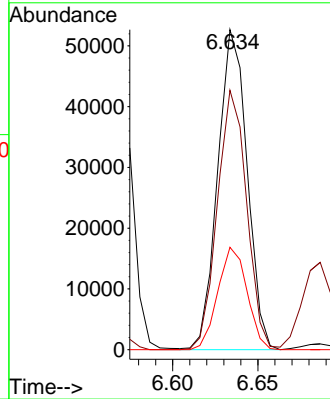
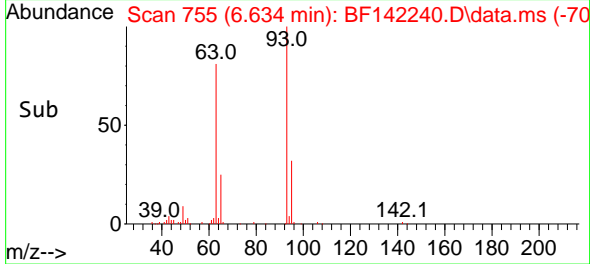
Tgt Ion: 93 Resp: 63148
 Ion Ratio Lower Upper
 93 100
 63 81.0 62.2 102.2
 95 32.0 12.7 52.7

Manual Integrations

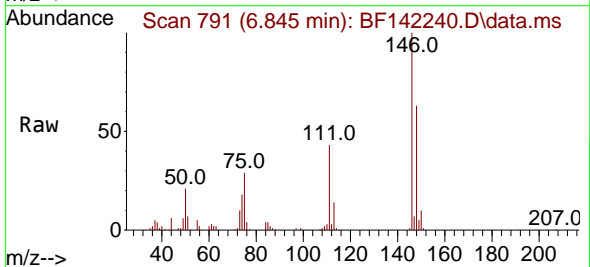
APPROVED

Reviewed By :Rahul Chavli 05/01/2025

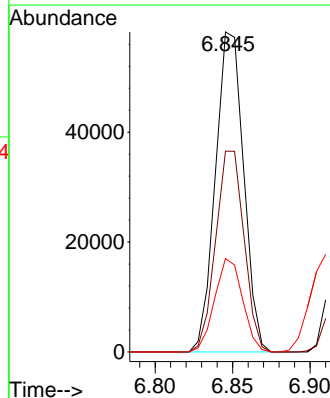
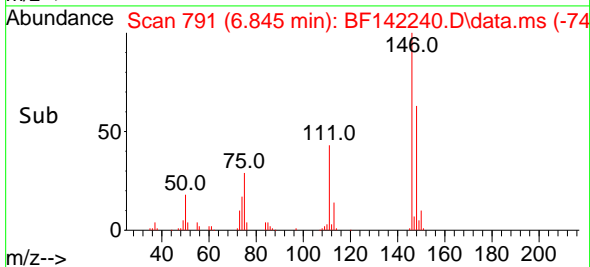
Supervised By :Jagrut Upadhyay 05/01/2025

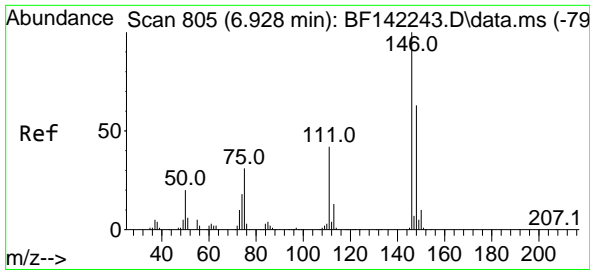


#12
 1,3-Dichlorobenzene
 Concen: 5.367 ng
 RT: 6.845 min Scan# 791
 Delta R.T. -0.006 min
 Lab File: BF142240.D
 Acq: 30 Apr 2025 11:52



Tgt Ion:146 Resp: 73777
 Ion Ratio Lower Upper
 146 100
 148 62.7 50.5 75.7
 75 29.2 23.2 34.8





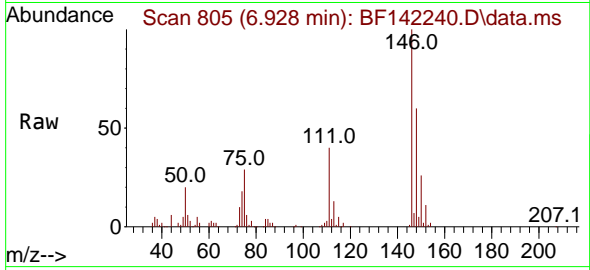
#13
 1,4-Dichlorobenzene
 Concen: 5.459 ng
 RT: 6.928 min Scan# 80
 Delta R.T. -0.000 min
 Lab File: BF142240.D
 Acq: 30 Apr 2025 11:52

Instrument :

BNA_F

ClientSampleId :

SSTDICC005



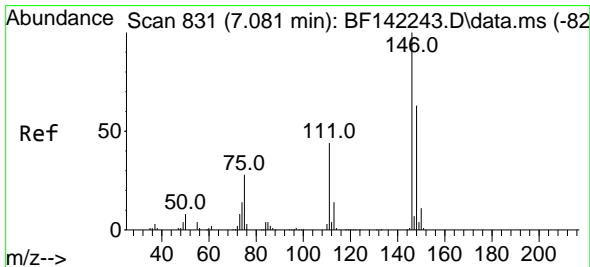
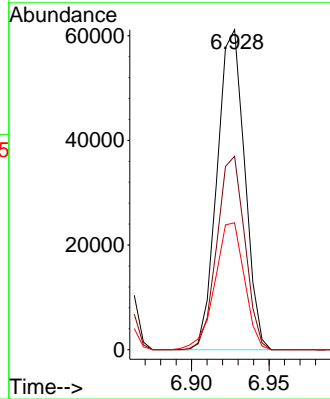
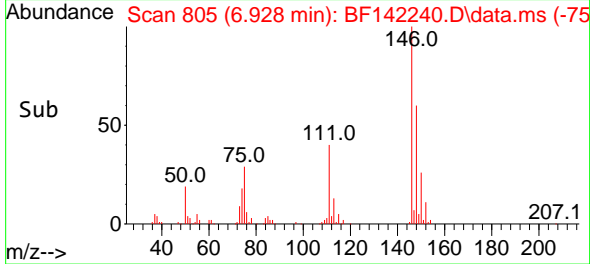
Tgt Ion:146 Resp: 75604
 Ion Ratio Lower Upper
 146 100
 148 60.5 50.6 76.0
 111 39.6 33.4 50.0

Manual Integrations

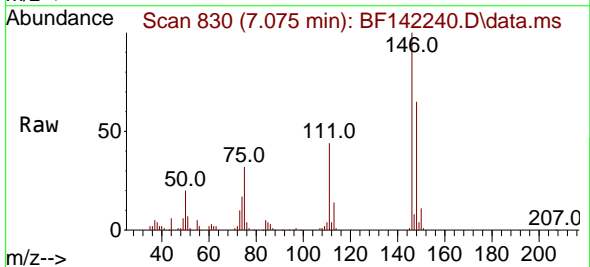
APPROVED

Reviewed By :Rahul Chavli 05/01/2025

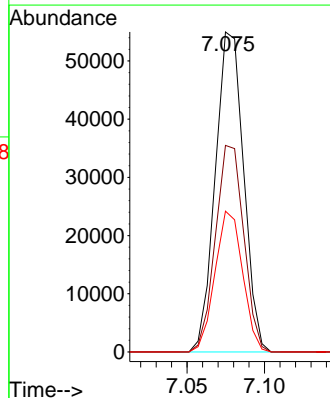
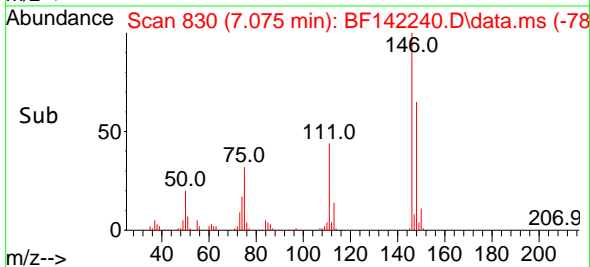
Supervised By :Jagrut Upadhyay 05/01/2025

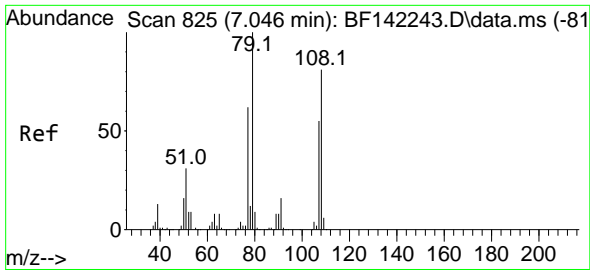


#14
 1,2-Dichlorobenzene
 Concen: 5.289 ng
 RT: 7.075 min Scan# 830
 Delta R.T. -0.006 min
 Lab File: BF142240.D
 Acq: 30 Apr 2025 11:52



Tgt Ion:146 Resp: 69920
 Ion Ratio Lower Upper
 146 100
 148 64.6 50.5 75.7
 111 44.0 34.9 52.3





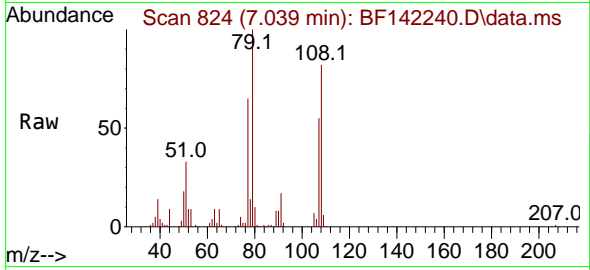
#15
 Benzyl Alcohol
 Concen: 4.879 ng
 RT: 7.039 min Scan# 81
 Delta R.T. -0.006 min
 Lab File: BF142240.D
 Acq: 30 Apr 2025 11:52

Instrument :

BNA_F

ClientSampleId :

SSTDICC005



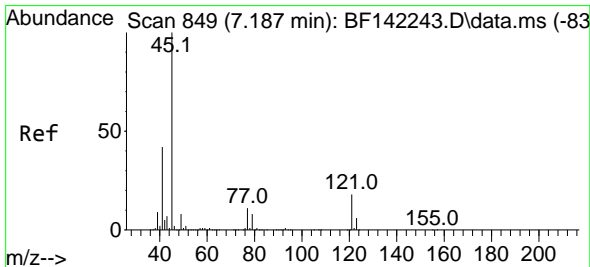
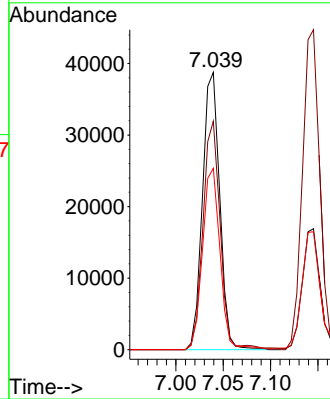
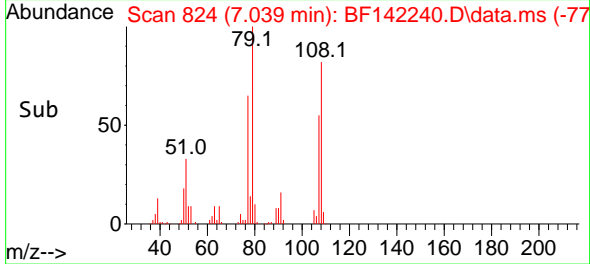
Tgt Ion: 79 Resp: 49130
 Ion Ratio Lower Upper
 79 100
 108 82.4 64.5 96.7
 77 65.4 49.2 73.8

Manual Integrations

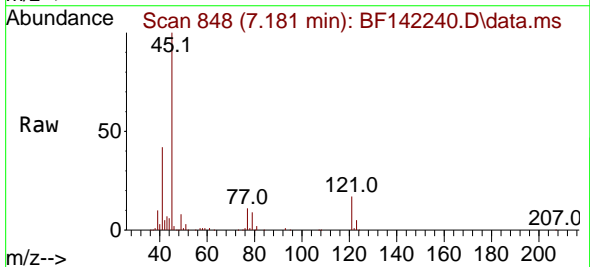
APPROVED

Reviewed By :Rahul Chavli 05/01/2025

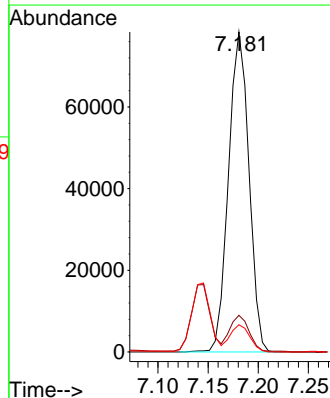
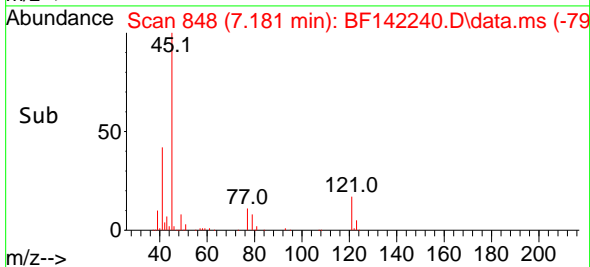
Supervised By :Jagrut Upadhyay 05/01/2025

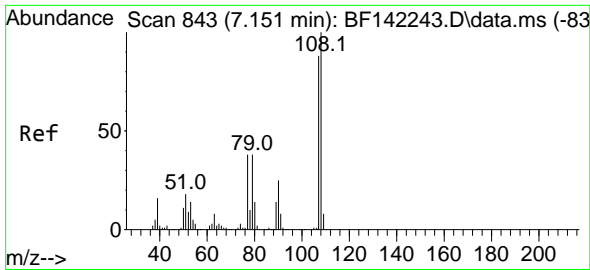


#16
 2,2'-oxybis(1-Chloropropane)
 Concen: 5.198 ng
 RT: 7.181 min Scan# 848
 Delta R.T. -0.006 min
 Lab File: BF142240.D
 Acq: 30 Apr 2025 11:52



Tgt Ion: 45 Resp: 111179
 Ion Ratio Lower Upper
 45 100
 77 11.5 0.0 31.3
 79 8.5 0.0 28.5





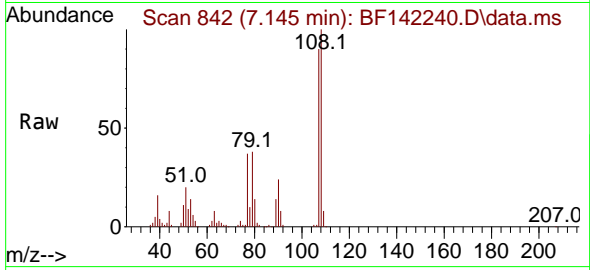
#17
 2-Methylphenol
 Concen: 5.118 ng
 RT: 7.145 min Scan# 843
 Delta R.T. -0.006 min
 Lab File: BF142240.D
 Acq: 30 Apr 2025 11:52

Instrument :

BNA_F

ClientSampleId :

SSTDICC005



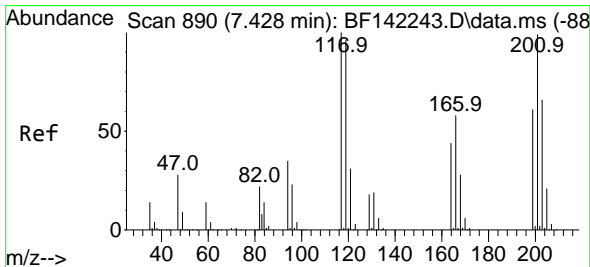
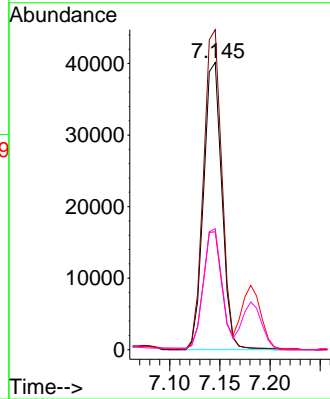
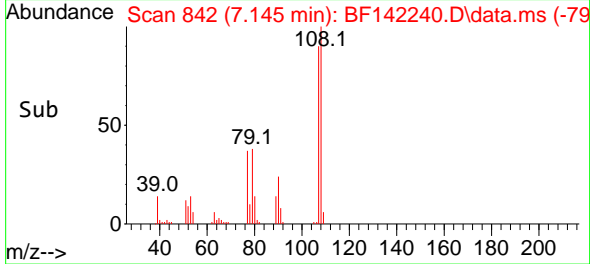
Tgt Ion:107 Resp: 5094
 Ion Ratio Lower Upper
 107 100
 108 111.4 91.0 136.4
 77 41.1 34.4 51.6
 79 42.1 34.4 51.6

Manual Integrations

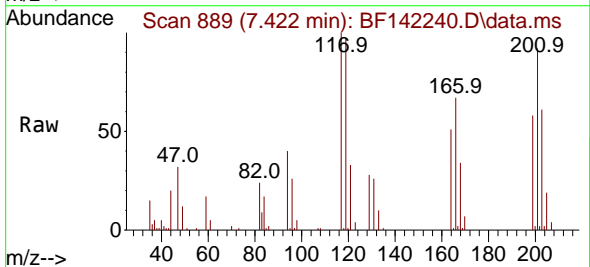
APPROVED

Reviewed By :Rahul Chavli 05/01/2025

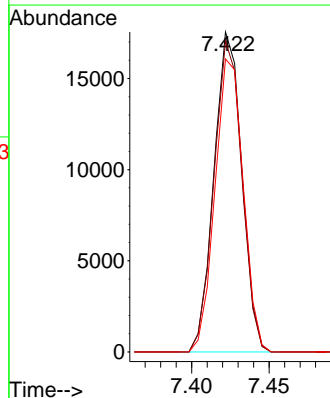
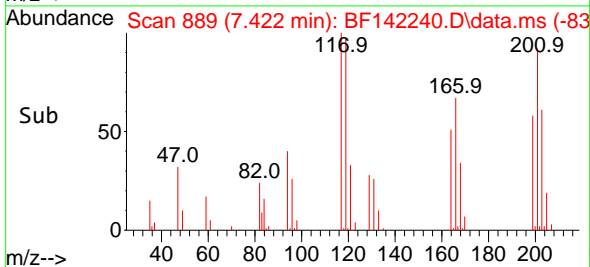
Supervised By :Jagrut Upadhyay 05/01/2025

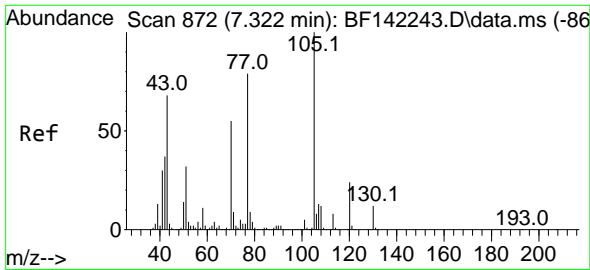


#18
 Hexachloroethane
 Concen: 4.844 ng
 RT: 7.422 min Scan# 889
 Delta R.T. -0.006 min
 Lab File: BF142240.D
 Acq: 30 Apr 2025 11:52



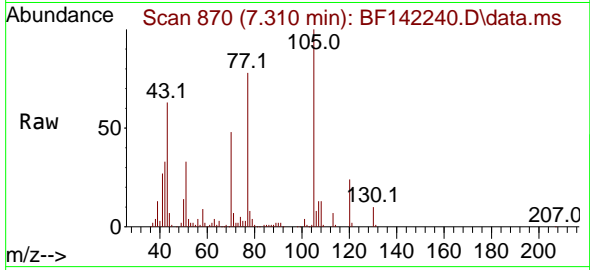
Tgt Ion:117 Resp: 21958
 Ion Ratio Lower Upper
 117 100
 119 97.2 77.1 115.7
 201 91.6 79.4 119.2





#19
 n-Nitroso-di-n-propylamine
 Concen: 5.281 ng
 RT: 7.310 min Scan# 81
 Delta R.T. -0.012 min
 Lab File: BF142240.D
 Acq: 30 Apr 2025 11:52

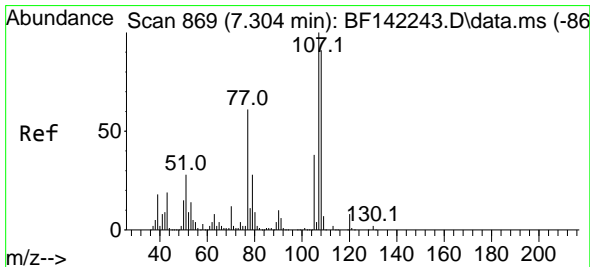
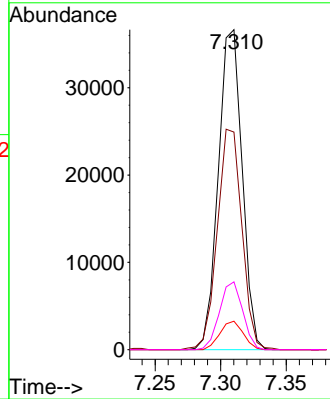
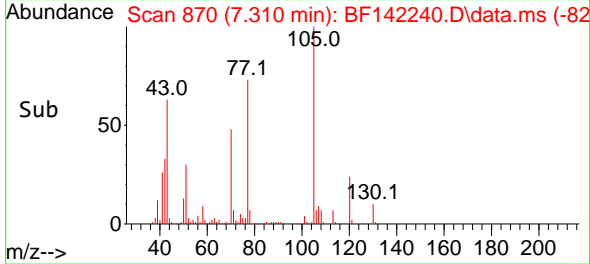
Instrument :
 BNA_F
 ClientSampleId :
 SSTDICC005



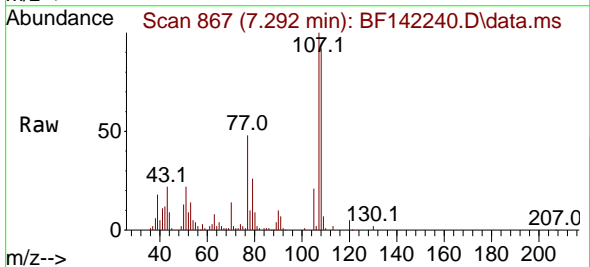
Tgt Ion: 70 Resp: 4634
 Ion Ratio Lower Upper
 70 100
 42 68.0 53.4 80.2
 101 8.9 7.7 11.5
 130 21.2 17.2 25.8

Manual Integrations
 APPROVED

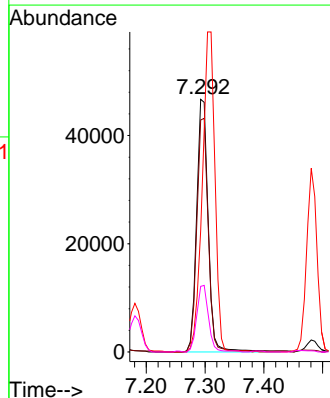
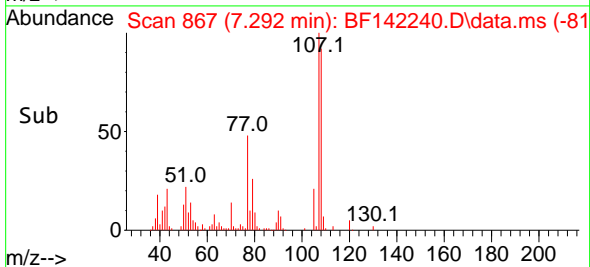
Reviewed By :Rahul Chavli 05/01/2025
 Supervised By :Jagrut Upadhyay 05/01/2025

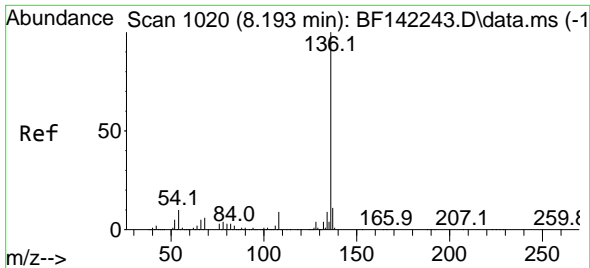


#20
 3+4-Methylphenols
 Concen: 5.119 ng
 RT: 7.292 min Scan# 867
 Delta R.T. -0.012 min
 Lab File: BF142240.D
 Acq: 30 Apr 2025 11:52



Tgt Ion:107 Resp: 63725
 Ion Ratio Lower Upper
 107 100
 108 91.8 71.2 111.2
 77 48.0 41.1 81.1
 79 26.0 8.1 48.1





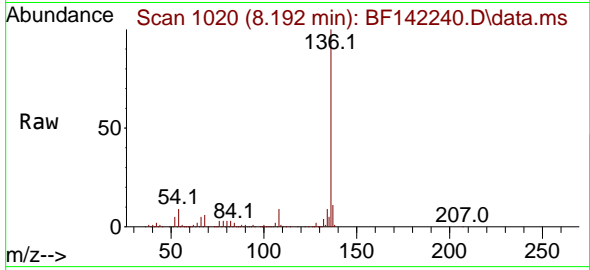
#21
 Naphthalene-d8
 Concen: 20.000 ng
 RT: 8.192 min Scan# 1020
 Delta R.T. -0.001 min
 Lab File: BF142240.D
 Acq: 30 Apr 2025 11:52

Instrument :

BNA_F

Client SampleId :

SSTDICC005



Tgt Ion:136 Resp: 726978

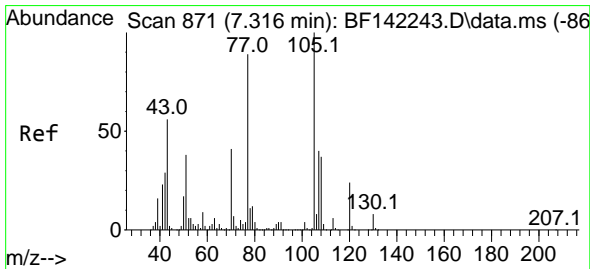
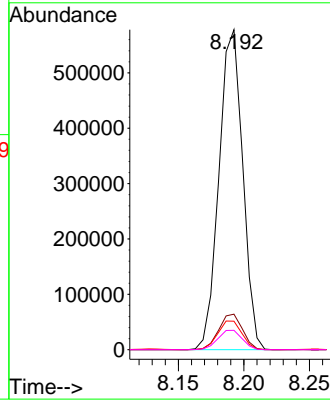
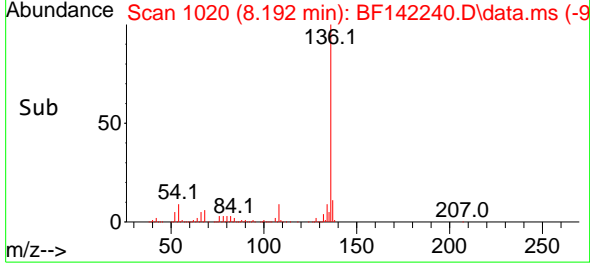
Ion	Ratio	Lower	Upper
136	100		
137	11.1	8.7	13.1
54	8.9	7.7	11.5
68	6.0	5.0	7.6

Manual Integrations

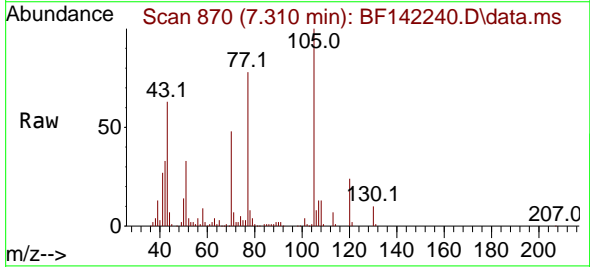
APPROVED

Reviewed By :Rahul Chavli 05/01/2025

Supervised By :Jagrut Upadhyay 05/01/2025

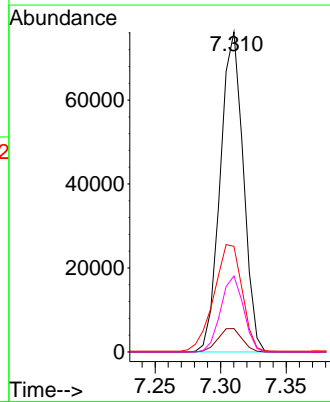
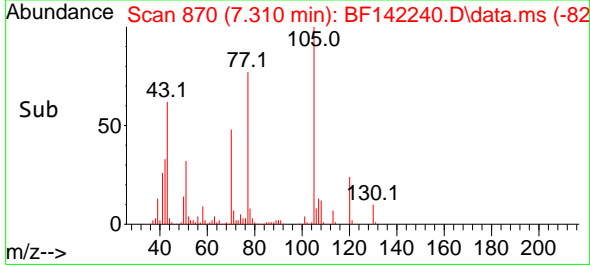


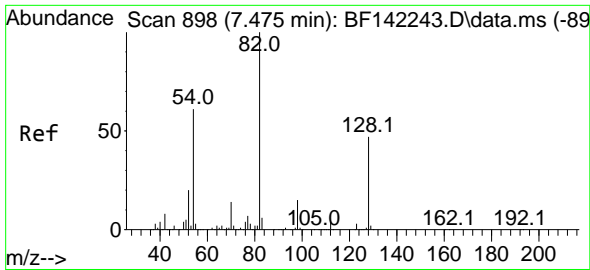
#22
 Acetophenone
 Concen: 5.518 ng
 RT: 7.310 min Scan# 870
 Delta R.T. -0.006 min
 Lab File: BF142240.D
 Acq: 30 Apr 2025 11:52



Tgt Ion:105 Resp: 92806

Ion	Ratio	Lower	Upper
105	100		
71	7.3	5.7	8.5
51	33.0	30.1	45.1
120	23.8	19.0	28.4





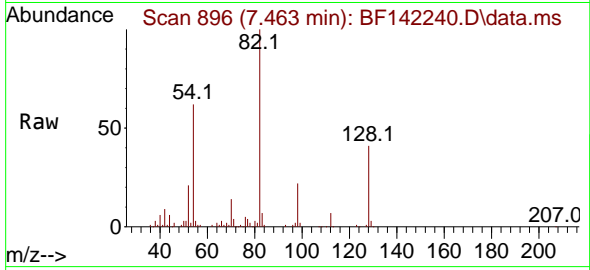
#23
 Nitrobenzene-d5
 Concen: 7.118 ng
 RT: 7.463 min Scan# 898
 Delta R.T. -0.012 min
 Lab File: BF142240.D
 Acq: 30 Apr 2025 11:52

Instrument :

BNA_F

ClientSampleId :

SSTDICC005



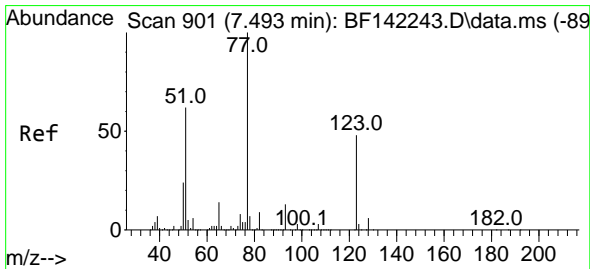
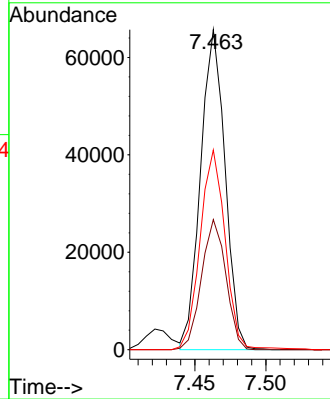
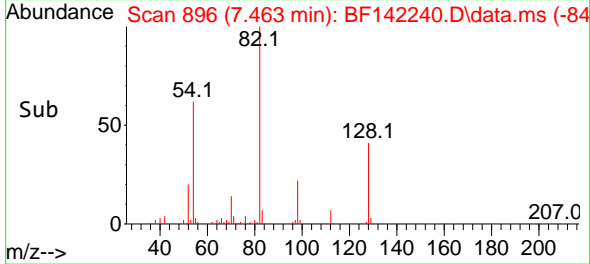
Tgt Ion: 82 Resp: 7876
 Ion Ratio Lower Upper
 82 100
 128 40.7 37.0 55.6
 54 62.4 48.0 72.0

Manual Integrations

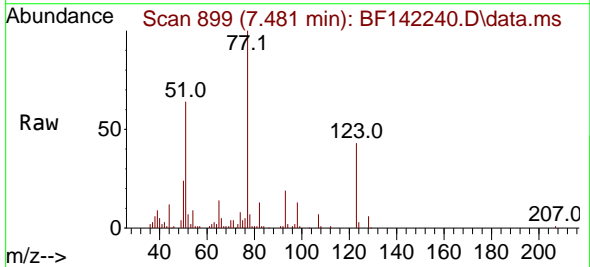
APPROVED

Reviewed By :Rahul Chavli 05/01/2025

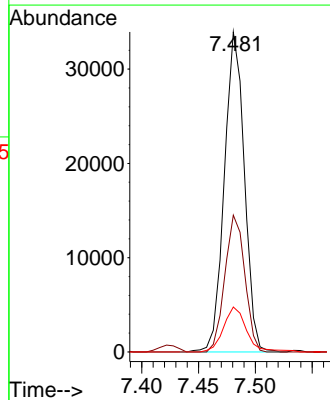
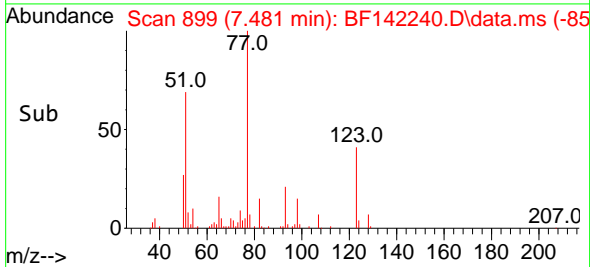
Supervised By :Jagrut Upadhyay 05/01/2025

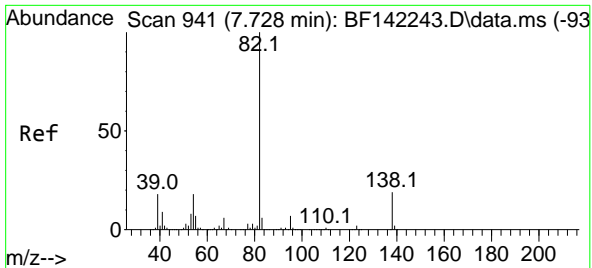


#24
 Nitrobenzene
 Concen: 3.837 ng
 RT: 7.481 min Scan# 899
 Delta R.T. -0.012 min
 Lab File: BF142240.D
 Acq: 30 Apr 2025 11:52



Tgt Ion: 77 Resp: 41660
 Ion Ratio Lower Upper
 77 100
 123 42.7 38.6 58.0
 65 14.1 11.5 17.3





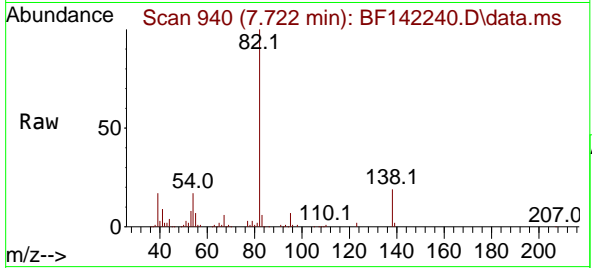
#25
 Isophorone
 Concen: 5.165 ng
 RT: 7.722 min Scan# 941
 Delta R.T. -0.006 min
 Lab File: BF142240.D
 Acq: 30 Apr 2025 11:52

Instrument :

BNA_F

ClientSampleId :

SSTDICC005



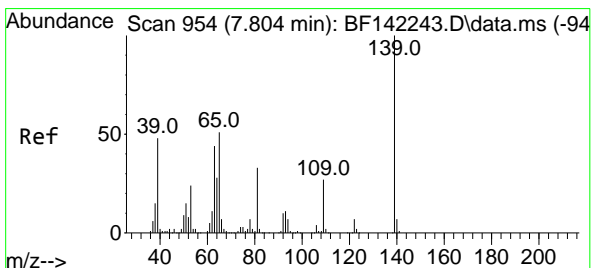
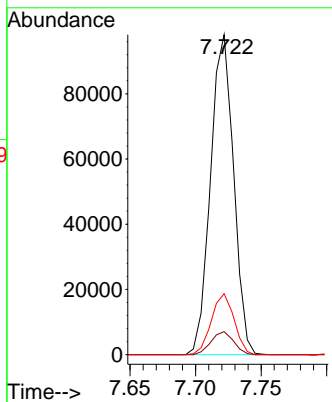
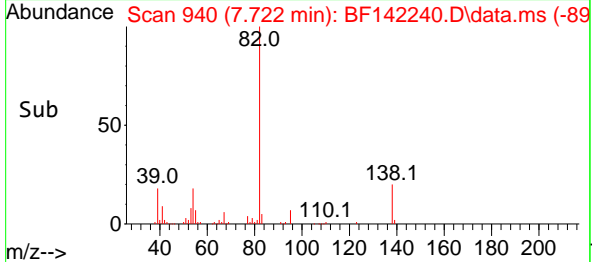
Tgt Ion: 82 Resp: 119954
 Ion Ratio Lower Upper
 82 100
 95 7.2 5.6 8.4
 138 19.0 15.3 22.9

Manual Integrations

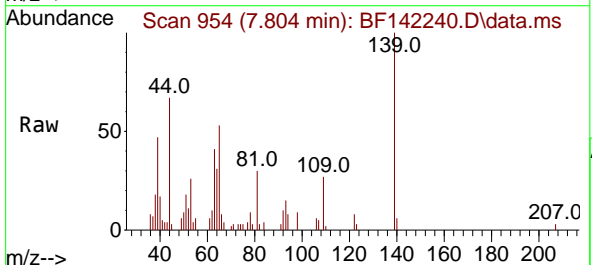
APPROVED

Reviewed By :Rahul Chavli 05/01/2025

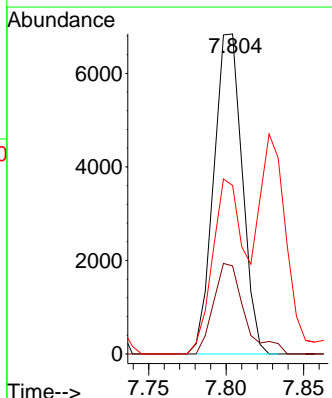
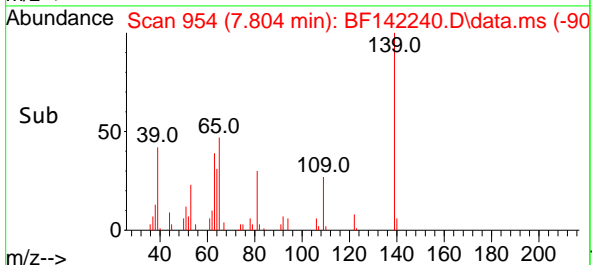
Supervised By :Jagrut Upadhyay 05/01/2025

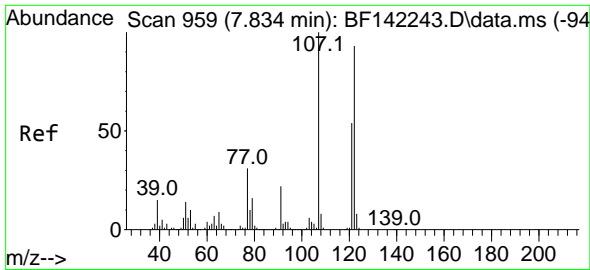


#26
 2-Nitrophenol
 Concen: 6.901 ng
 RT: 7.804 min Scan# 954
 Delta R.T. 0.000 min
 Lab File: BF142240.D
 Acq: 30 Apr 2025 11:52



Tgt Ion:139 Resp: 8775
 Ion Ratio Lower Upper
 139 100
 109 27.5 21.8 32.8
 65 52.6 41.1 61.7





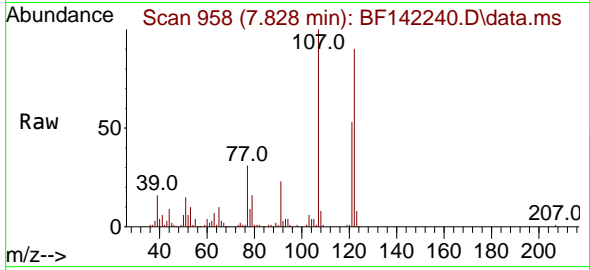
#27
 2,4-Dimethylphenol
 Concen: 4.887 ng
 RT: 7.828 min Scan# 911
 Delta R.T. -0.006 min
 Lab File: BF142240.D
 Acq: 30 Apr 2025 11:52

Instrument :

BNA_F

Client Sample Id :

SSTDICC005



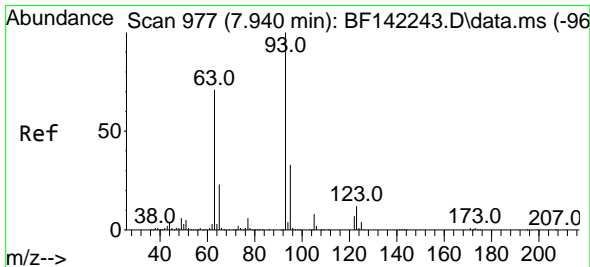
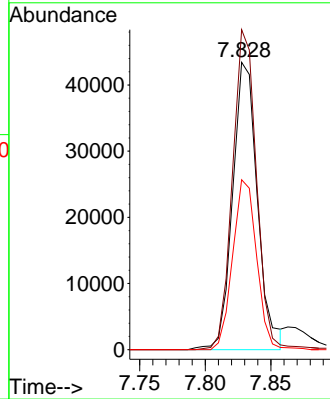
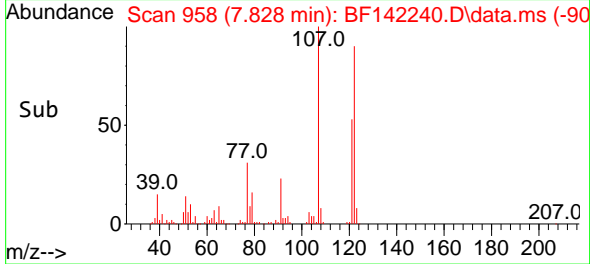
Tgt Ion: 122 Resp: 5721
 Ion Ratio Lower Upper
 122 100
 107 111.3 86.0 129.0
 121 59.1 46.3 69.5

Manual Integrations

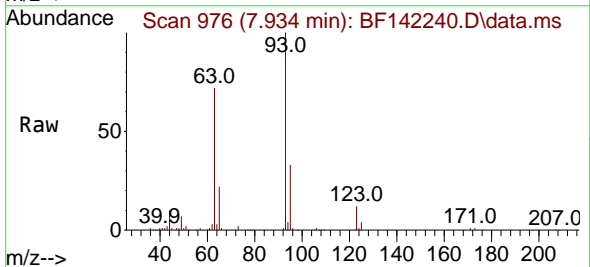
APPROVED

Reviewed By :Rahul Chavli 05/01/2025

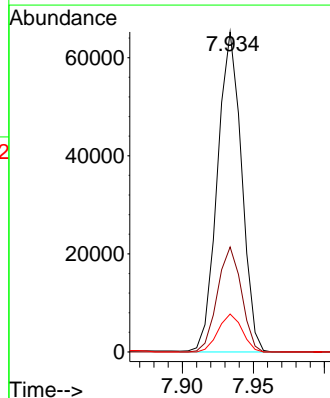
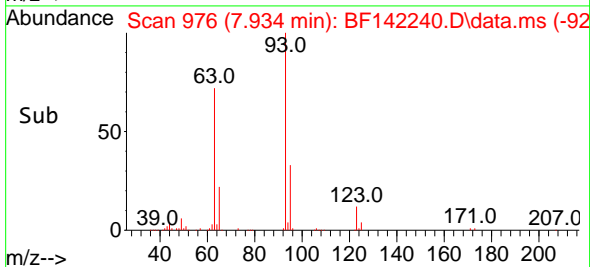
Supervised By :Jagrut Upadhyay 05/01/2025

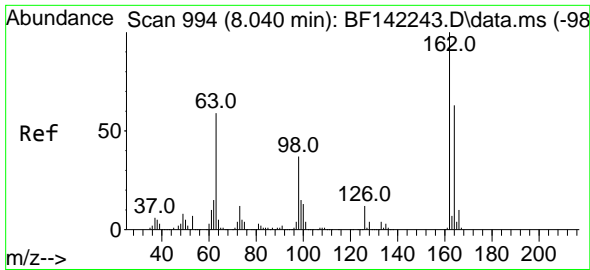


#28
 bis(2-Chloroethoxy)methane
 Concen: 5.268 ng
 RT: 7.934 min Scan# 976
 Delta R.T. -0.006 min
 Lab File: BF142240.D
 Acq: 30 Apr 2025 11:52



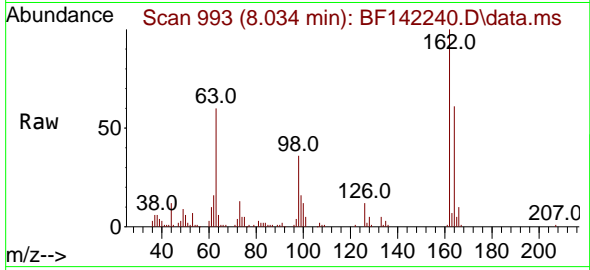
Tgt Ion: 93 Resp: 77155
 Ion Ratio Lower Upper
 93 100
 95 32.8 26.2 39.2
 123 11.8 9.7 14.5





#29
 2,4-Dichlorophenol
 Concen: 4.560 ng
 RT: 8.034 min Scan# 91
 Delta R.T. -0.006 min
 Lab File: BF142240.D
 Acq: 30 Apr 2025 11:52

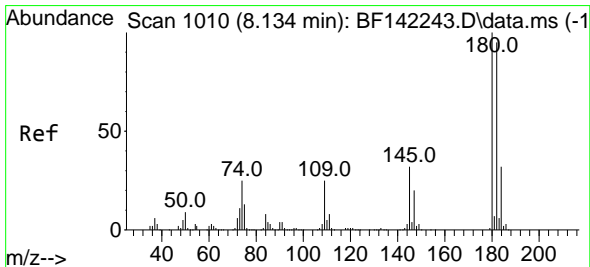
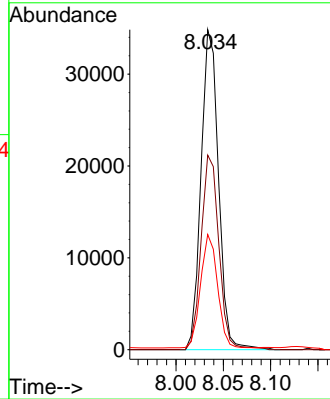
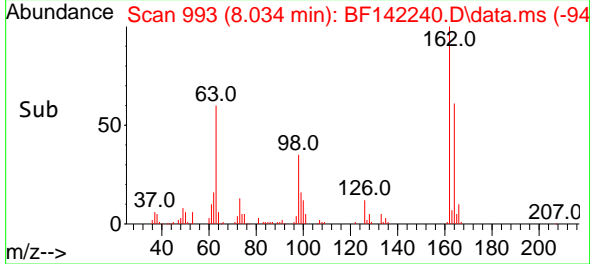
Instrument :
 BNA_F
 ClientSampleId :
 SSTDICC005



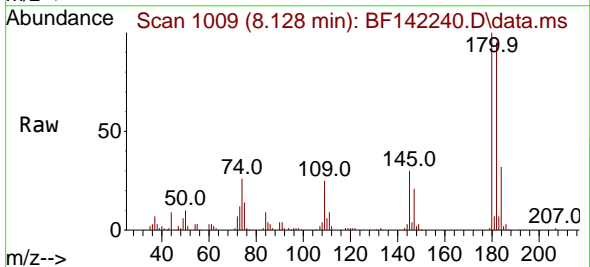
Tgt Ion:162 Resp: 4464
 Ion Ratio Lower Upper
 162 100
 164 60.8 43.0 83.0
 98 36.0 16.7 56.7

Manual Integrations
 APPROVED

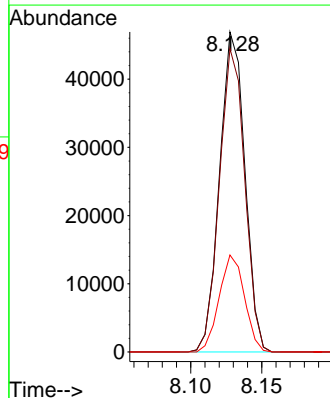
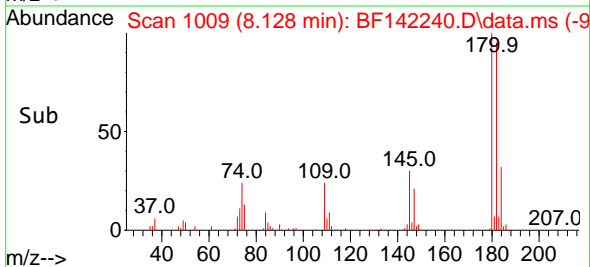
Reviewed By :Rahul Chavli 05/01/2025
 Supervised By :Jagrut Upadhyay 05/01/2025

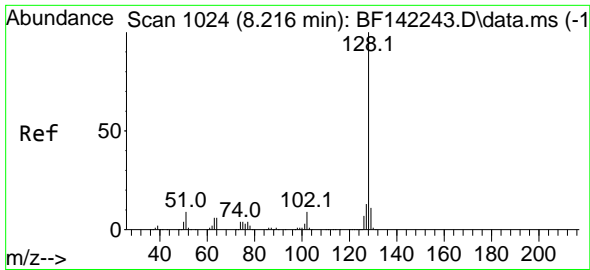


#30
 1,2,4-Trichlorobenzene
 Concen: 5.326 ng
 RT: 8.128 min Scan# 1009
 Delta R.T. -0.006 min
 Lab File: BF142240.D
 Acq: 30 Apr 2025 11:52



Tgt Ion:180 Resp: 58177
 Ion Ratio Lower Upper
 180 100
 182 94.8 75.7 113.5
 145 30.3 25.4 38.0





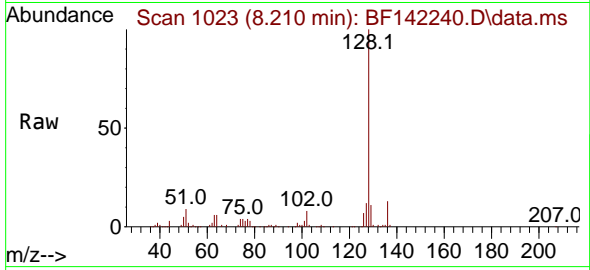
#31
 Naphthalene
 Concen: 5.543 ng
 RT: 8.210 min Scan# 1023
 Delta R.T. -0.006 min
 Lab File: BF142240.D
 Acq: 30 Apr 2025 11:52

Instrument :

BNA_F

Client Sample Id :

SSTDICC005



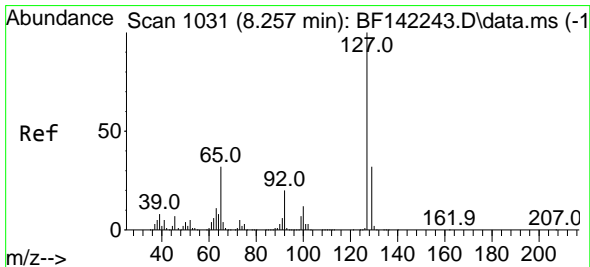
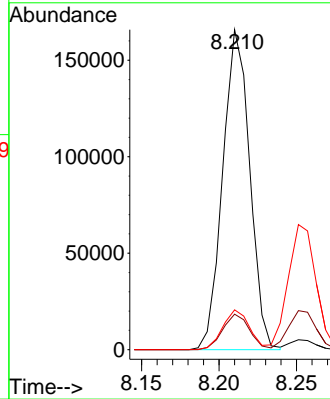
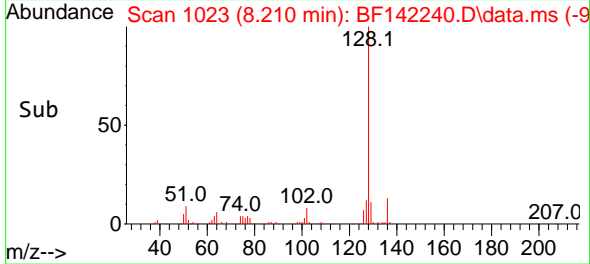
Tgt Ion:128 Resp: 200969
 Ion Ratio Lower Upper
 128 100
 129 11.1 9.0 13.4
 127 12.4 10.6 15.8

Manual Integrations

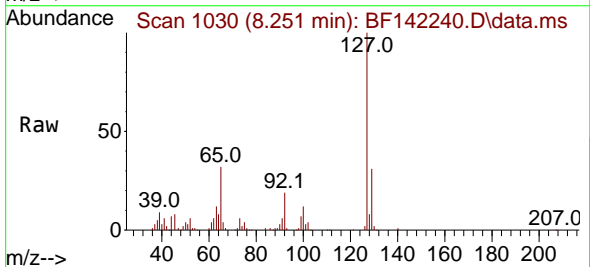
APPROVED

Reviewed By :Rahul Chavli 05/01/2025

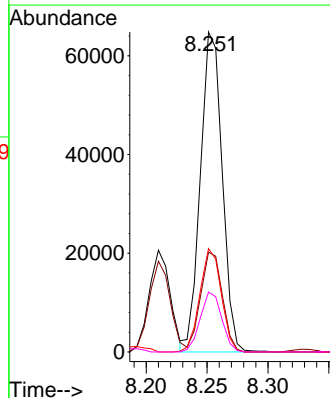
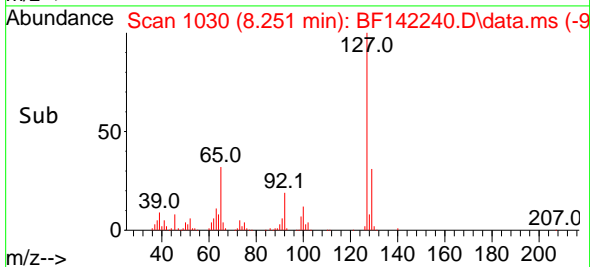
Supervised By :Jagrut Upadhyay 05/01/2025

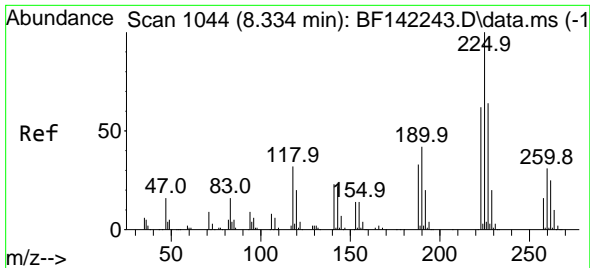


#33
 4-Chloroaniline
 Concen: 5.367 ng
 RT: 8.251 min Scan# 1030
 Delta R.T. -0.006 min
 Lab File: BF142240.D
 Acq: 30 Apr 2025 11:52



Tgt Ion:127 Resp: 81024
 Ion Ratio Lower Upper
 127 100
 129 31.2 26.1 39.1
 65 32.3 25.5 38.3
 92 18.7 15.4 23.2





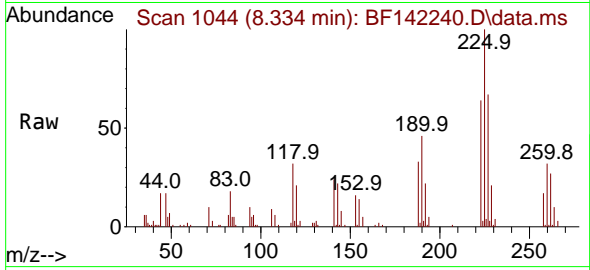
#34
 Hexachlorobutadiene
 Concen: 5.127 ng
 RT: 8.334 min Scan# 1044
 Delta R.T. -0.000 min
 Lab File: BF142240.D
 Acq: 30 Apr 2025 11:52

Instrument :

BNA_F

Client SampleId :

SSTDICC005



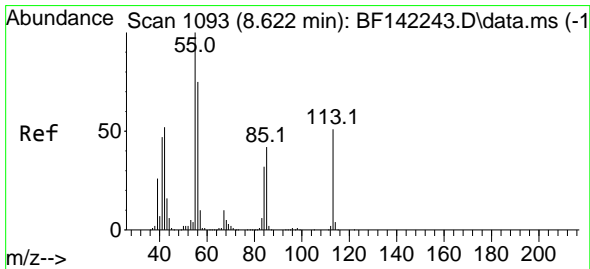
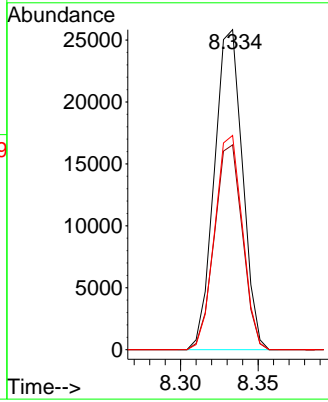
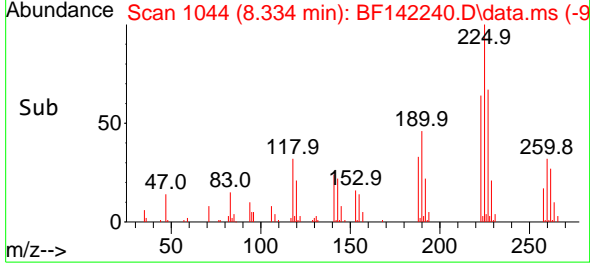
Tgt Ion: 225 Resp: 32670
 Ion Ratio Lower Upper
 225 100
 223 64.0 49.7 74.5
 227 67.0 51.0 76.4

Manual Integrations

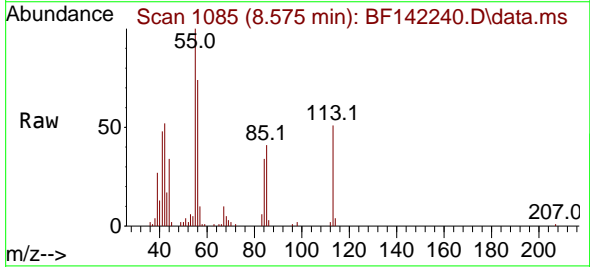
APPROVED

Reviewed By :Rahul Chavli 05/01/2025

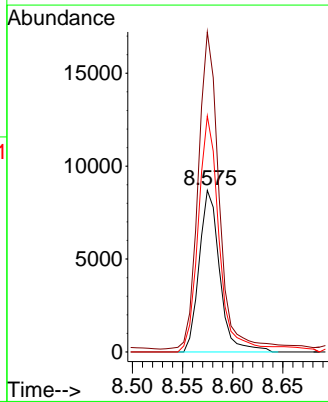
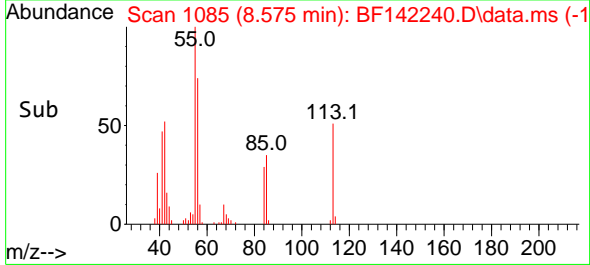
Supervised By :Jagrut Upadhyay 05/01/2025

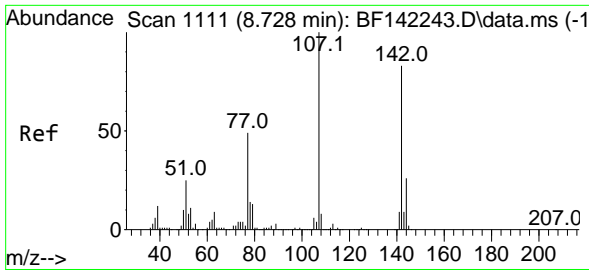


#35
 Caprolactam
 Concen: 4.223 ng
 RT: 8.575 min Scan# 1085
 Delta R.T. -0.047 min
 Lab File: BF142240.D
 Acq: 30 Apr 2025 11:52



Tgt Ion: 113 Resp: 12427
 Ion Ratio Lower Upper
 113 100
 55 197.9 177.7 217.7
 56 146.0 127.1 167.1





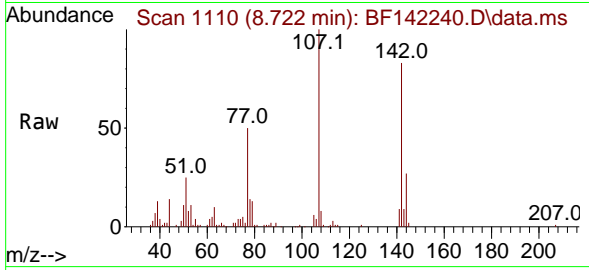
#36
 4-Chloro-3-methylphenol
 Concen: 4.743 ng
 RT: 8.722 min Scan# 1110
 Delta R.T. -0.006 min
 Lab File: BF142240.D
 Acq: 30 Apr 2025 11:52

Instrument :

BNA_F

ClientSampleId :

SSTDIC005



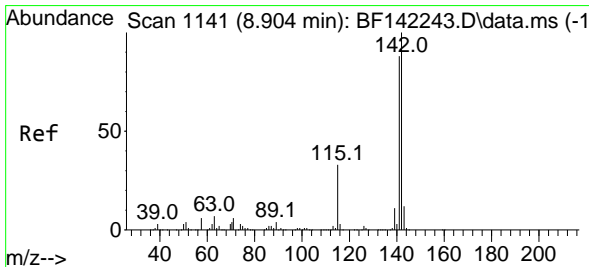
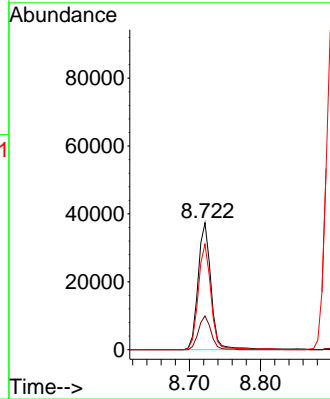
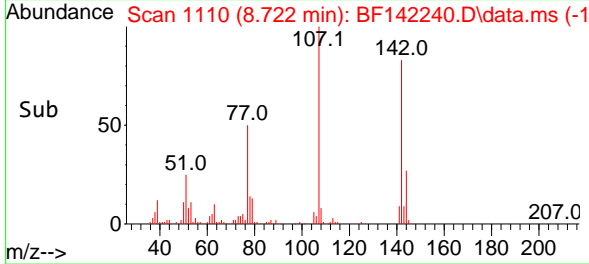
Tgt Ion:107 Resp: 4767
 Ion Ratio Lower Upper
 107 100
 144 26.6 21.0 31.4
 142 83.1 66.1 99.1

Manual Integrations

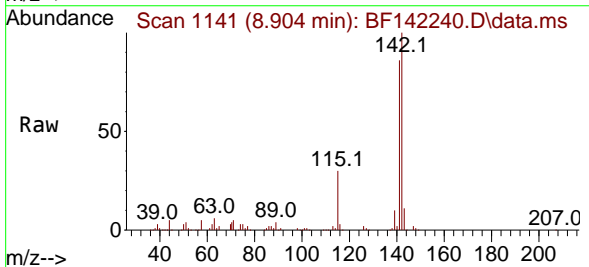
APPROVED

Reviewed By :Rahul Chavli 05/01/2025

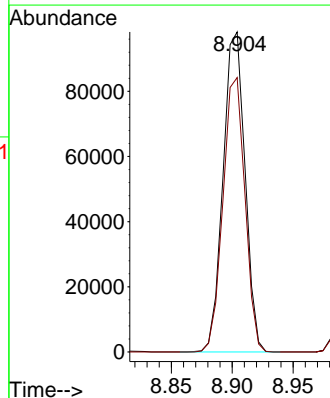
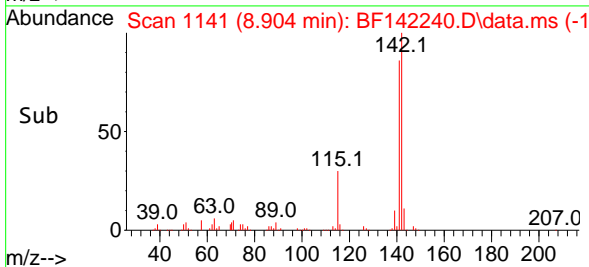
Supervised By :Jagrut Upadhyay 05/01/2025

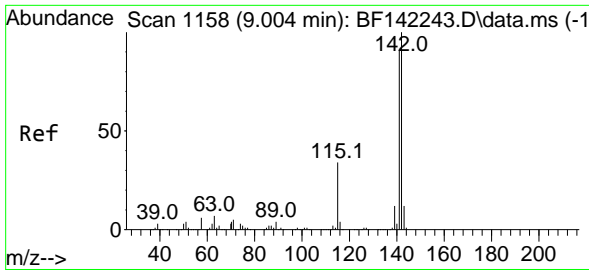


#37
 2-Methylnaphthalene
 Concen: 5.539 ng
 RT: 8.904 min Scan# 1141
 Delta R.T. -0.000 min
 Lab File: BF142240.D
 Acq: 30 Apr 2025 11:52



Tgt Ion:142 Resp: 123458
 Ion Ratio Lower Upper
 142 100
 141 85.8 70.5 105.7





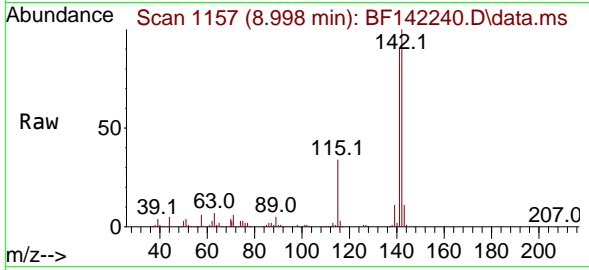
#38
 1-Methylnaphthalene
 Concen: 5.512 ng
 RT: 8.998 min Scan# 1157
 Delta R.T. -0.006 min
 Lab File: BF142240.D
 Acq: 30 Apr 2025 11:52

Instrument :

BNA_F

ClientSampleId :

SSTDICC005



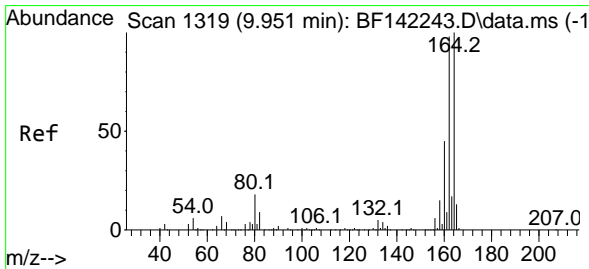
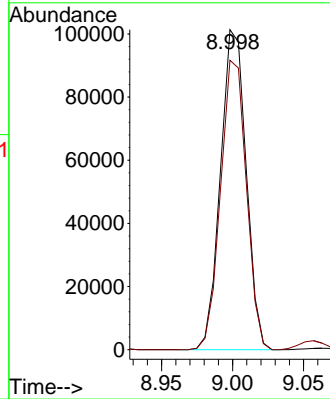
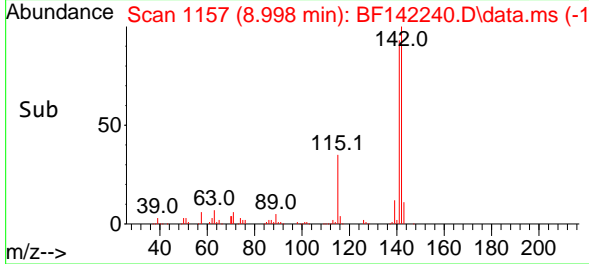
Tgt Ion:142 Resp: 127274
 Ion Ratio Lower Upper
 142 100
 141 90.5 72.8 109.2

Manual Integrations

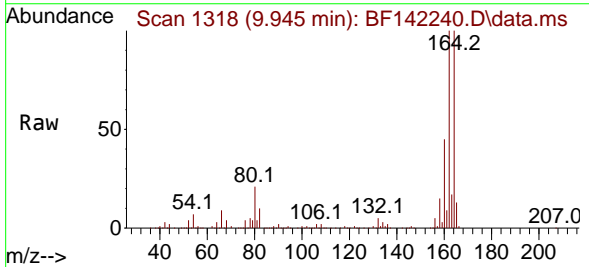
APPROVED

Reviewed By :Rahul Chavli 05/01/2025

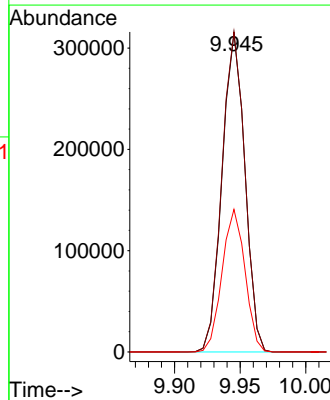
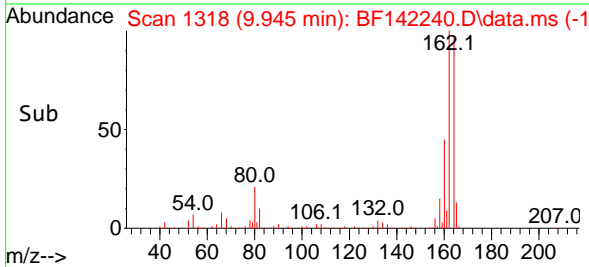
Supervised By :Jagrut Upadhyay 05/01/2025

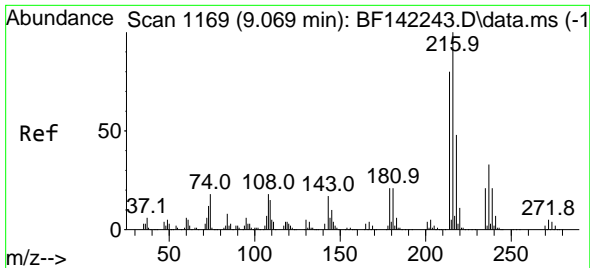


#39
 Acenaphthene-d10
 Concen: 20.000 ng
 RT: 9.945 min Scan# 1318
 Delta R.T. -0.006 min
 Lab File: BF142240.D
 Acq: 30 Apr 2025 11:52



Tgt Ion:164 Resp: 380022
 Ion Ratio Lower Upper
 164 100
 162 100.5 78.6 117.8
 160 44.8 35.7 53.5





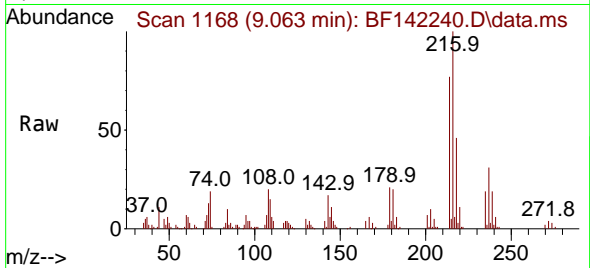
#40
 1,2,4,5-Tetrachlorobenzene
 Concen: 5.513 ng
 RT: 9.063 min Scan# 1168
 Delta R.T. -0.006 min
 Lab File: BF142240.D
 Acq: 30 Apr 2025 11:52

Instrument :

BNA_F

ClientSampleId :

SSTDICC005



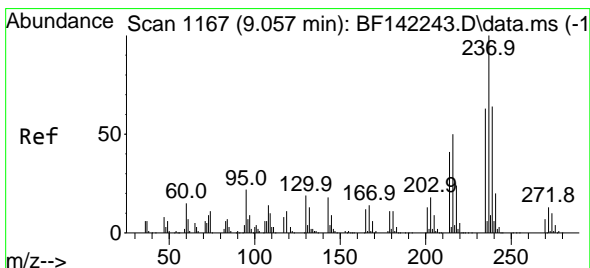
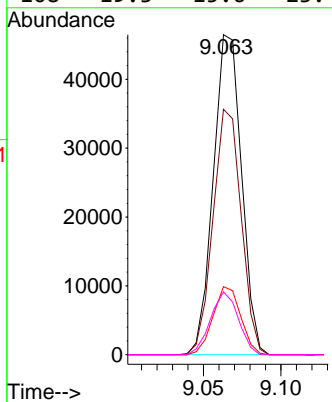
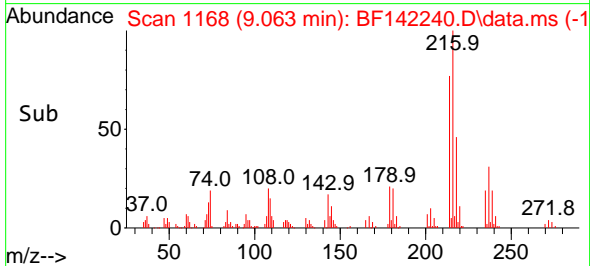
Tgt Ion:216 Resp: 5896
 Ion Ratio Lower Upper
 216 100
 214 76.4 63.8 95.6
 179 20.8 16.7 25.1
 108 19.3 15.6 23.4

Manual Integrations

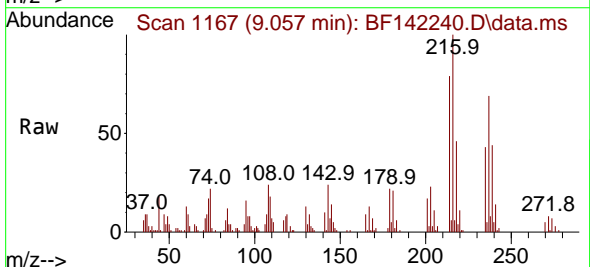
APPROVED

Reviewed By :Rahul Chavli 05/01/2025

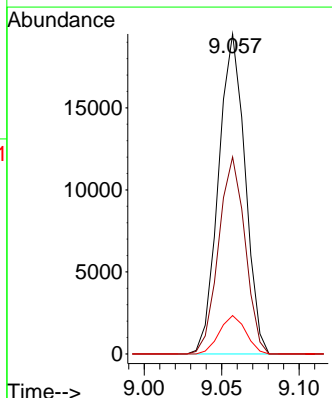
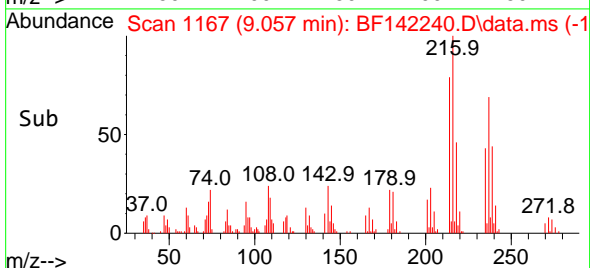
Supervised By :Jagrut Upadhyay 05/01/2025

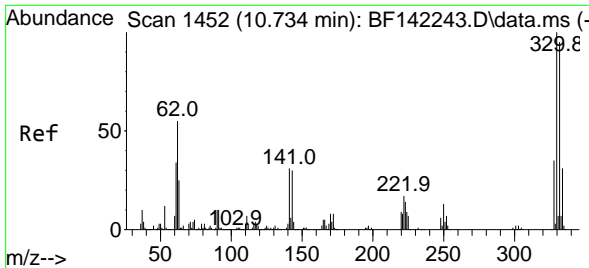


#41
 Hexachlorocyclopentadiene
 Concen: 3.827 ng
 RT: 9.057 min Scan# 1167
 Delta R.T. -0.000 min
 Lab File: BF142240.D
 Acq: 30 Apr 2025 11:52



Tgt Ion:237 Resp: 23228
 Ion Ratio Lower Upper
 237 100
 235 61.6 43.5 83.5
 272 12.0 0.0 32.9





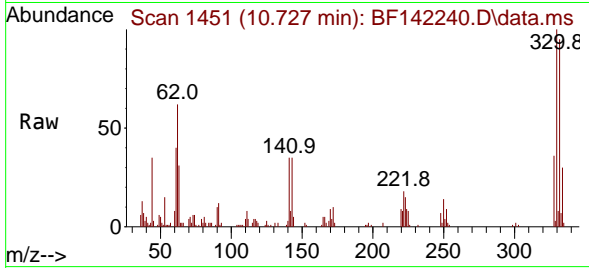
#42
 2,4,6-Tribromophenol
 Concen: 7.613 ng
 RT: 10.727 min Scan# 1451
 Delta R.T. -0.006 min
 Lab File: BF142240.D
 Acq: 30 Apr 2025 11:52

Instrument :

BNA_F

ClientSampleId :

SSTDIC005



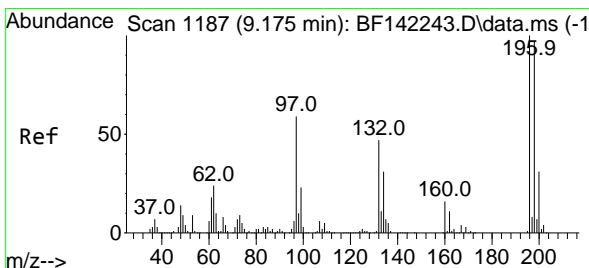
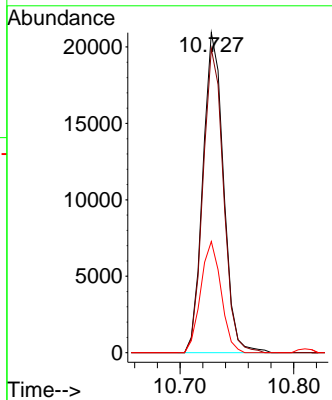
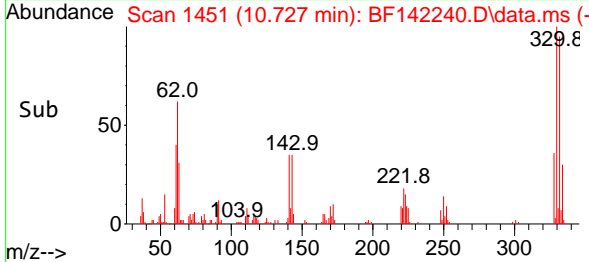
Tgt Ion: 330 Resp: 2637
 Ion Ratio Lower Upper
 330 100
 332 94.2 76.5 114.7
 141 34.3 24.3 36.5

Manual Integrations

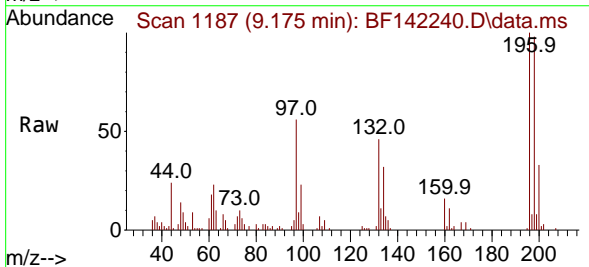
APPROVED

Reviewed By :Rahul Chavli 05/01/2025

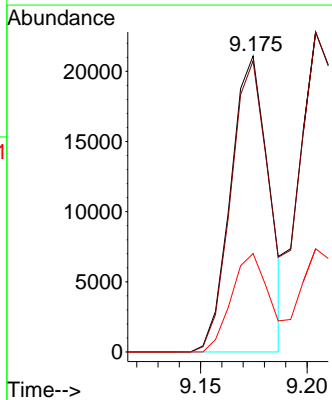
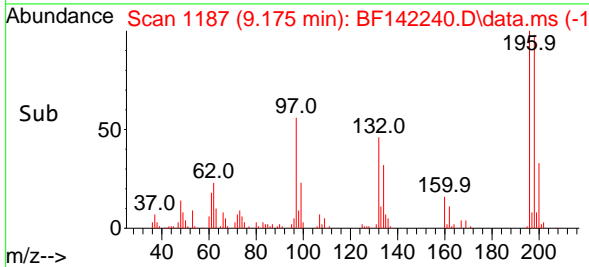
Supervised By :Jagrut Upadhyay 05/01/2025

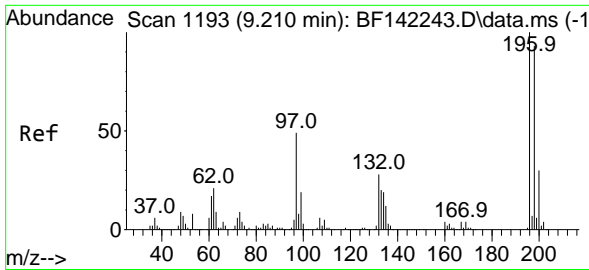


#43
 2,4,6-Trichlorophenol
 Concen: 3.949 ng
 RT: 9.175 min Scan# 1187
 Delta R.T. -0.000 min
 Lab File: BF142240.D
 Acq: 30 Apr 2025 11:52



Tgt Ion: 196 Resp: 26171
 Ion Ratio Lower Upper
 196 100
 198 98.3 77.4 116.2
 200 33.2 24.6 37.0





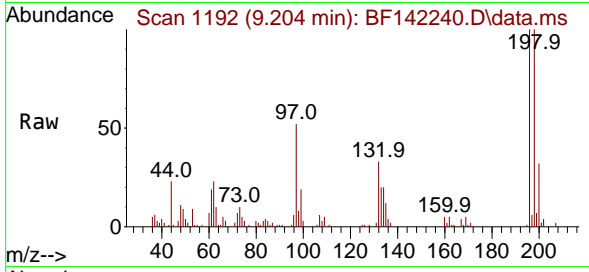
#44
 2,4,5-Trichlorophenol
 Concen: 4.390 ng
 RT: 9.204 min Scan# 1192
 Delta R.T. -0.006 min
 Lab File: BF142240.D
 Acq: 30 Apr 2025 11:52

Instrument :

BNA_F

ClientSampleId :

SSTDICC005



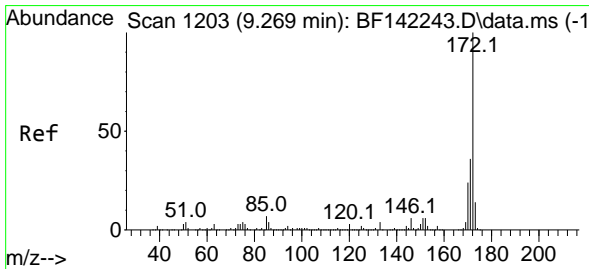
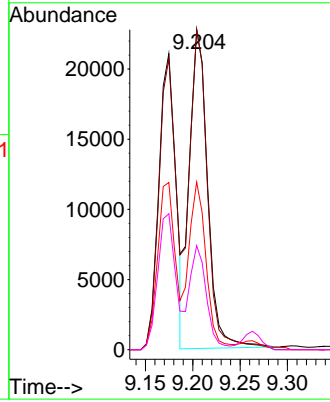
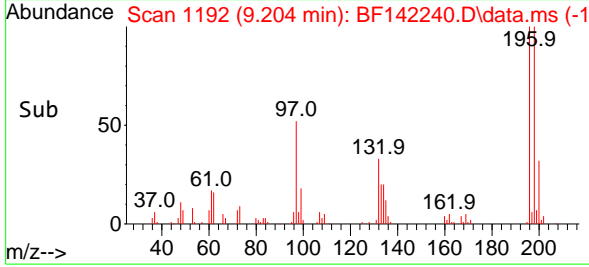
Tgt Ion:196 Resp: 3058
 Ion Ratio Lower Upper
 196 100
 198 99.9 75.2 112.8
 97 52.4 39.8 59.8
 132 32.5 23.8 35.8

Manual Integrations

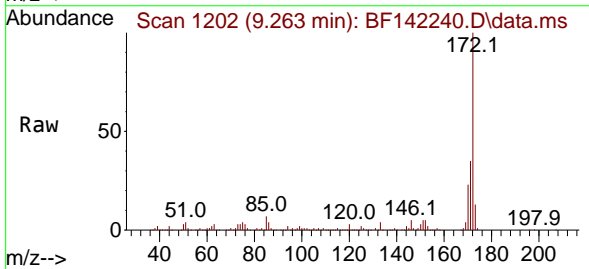
APPROVED

Reviewed By :Rahul Chavli 05/01/2025

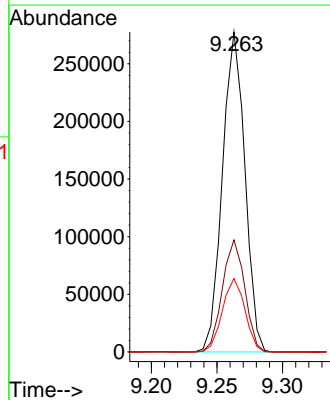
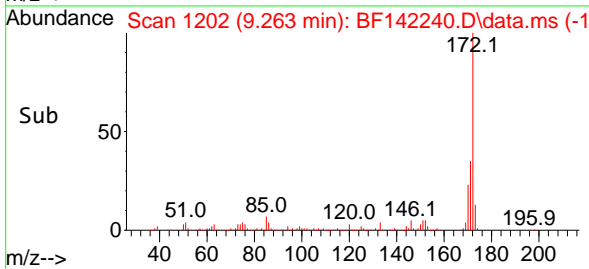
Supervised By :Jagrut Upadhyay 05/01/2025

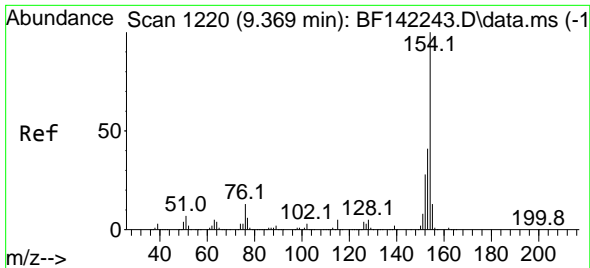


#45
 2-Fluorobiphenyl
 Concen: 12.256 ng
 RT: 9.263 min Scan# 1202
 Delta R.T. -0.006 min
 Lab File: BF142240.D
 Acq: 30 Apr 2025 11:52



Tgt Ion:172 Resp: 330323
 Ion Ratio Lower Upper
 172 100
 171 35.0 29.0 43.4
 170 22.9 19.4 29.0





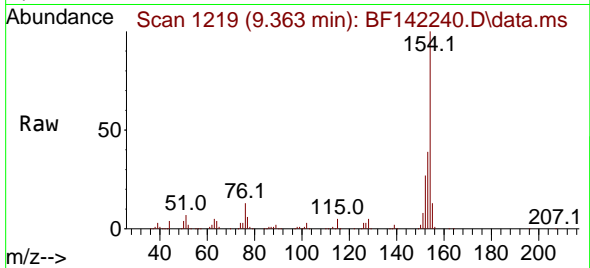
#46
 1,1'-Biphenyl
 Concen: 5.702 ng
 RT: 9.363 min Scan# 1219
 Delta R.T. -0.006 min
 Lab File: BF142240.D
 Acq: 30 Apr 2025 11:52

Instrument :

BNA_F

Client Sample Id :

SSTDICC005



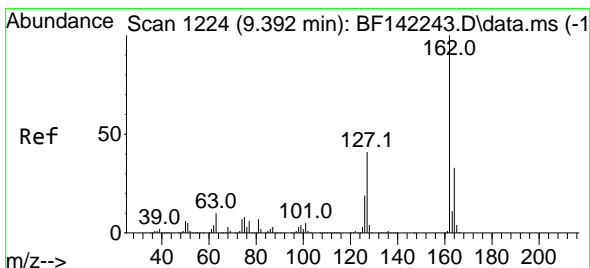
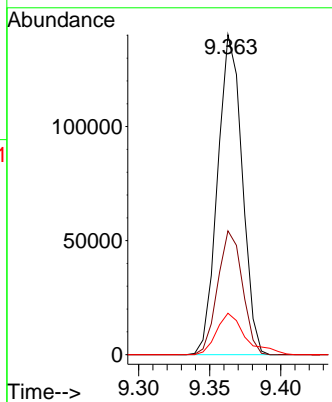
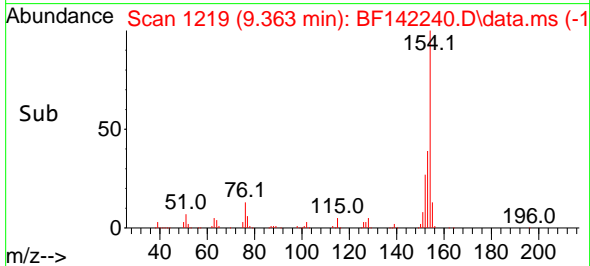
Tgt Ion:154 Resp: 168450
 Ion Ratio Lower Upper
 154 100
 153 38.7 20.5 60.5
 76 13.0 0.0 32.8

Manual Integrations

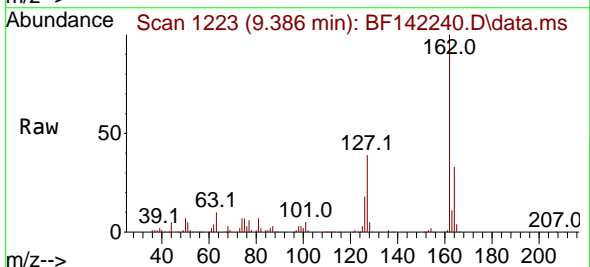
APPROVED

Reviewed By :Rahul Chavli 05/01/2025

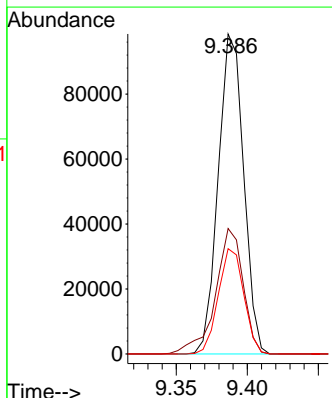
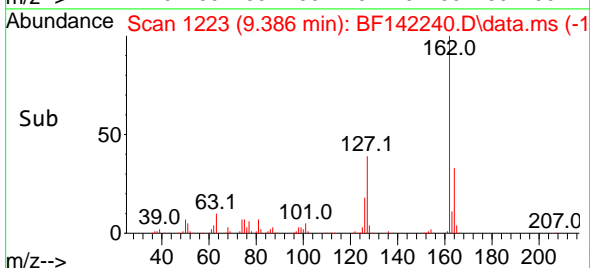
Supervised By :Jagrut Upadhyay 05/01/2025

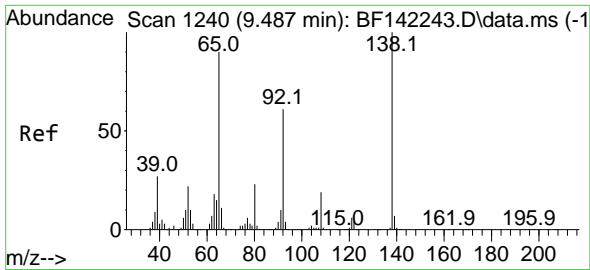


#47
 2-Chloronaphthalene
 Concen: 5.572 ng
 RT: 9.386 min Scan# 1223
 Delta R.T. -0.006 min
 Lab File: BF142240.D
 Acq: 30 Apr 2025 11:52



Tgt Ion:162 Resp: 122469
 Ion Ratio Lower Upper
 162 100
 127 39.2 32.6 49.0
 164 32.9 26.1 39.1





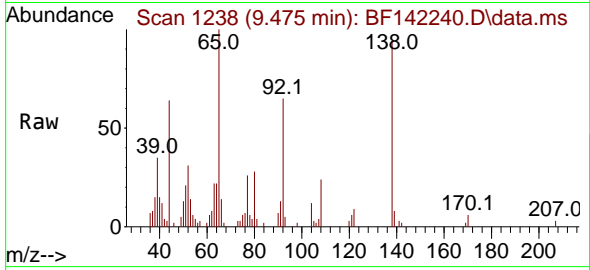
#48
 2-Nitroaniline
 Concen: 6.532 ng
 RT: 9.475 min Scan# 1134
 Delta R.T. -0.012 min
 Lab File: BF142240.D
 Acq: 30 Apr 2025 11:52

Instrument :

BNA_F

ClientSampleId :

SSTDICC005



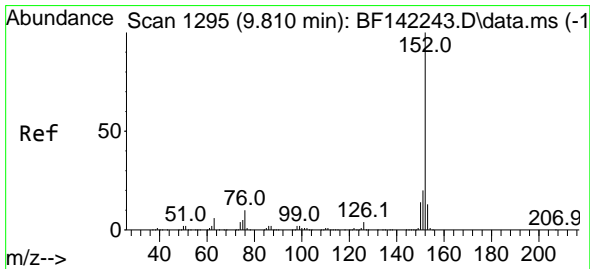
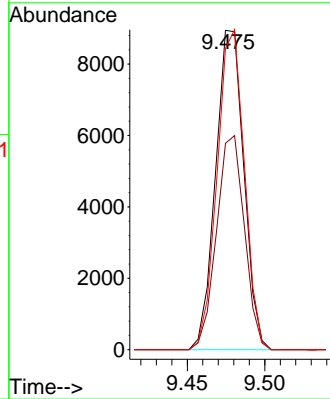
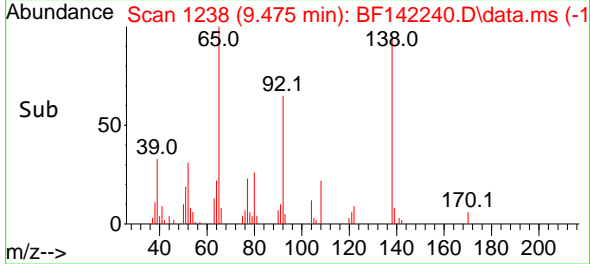
Tgt Ion: 65 Resp: 1134
 Ion Ratio Lower Upper
 65 100
 92 64.6 54.3 81.5
 138 94.3 88.6 133.0

Manual Integrations

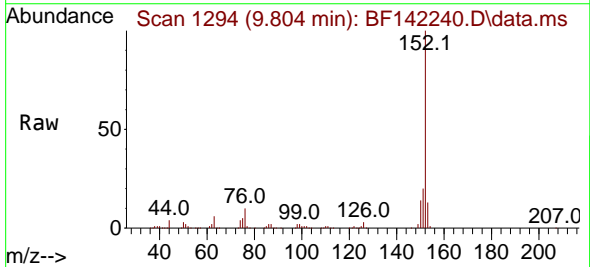
APPROVED

Reviewed By :Rahul Chavli 05/01/2025

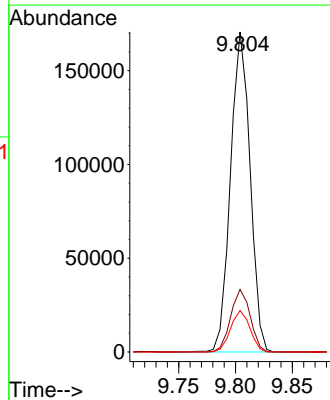
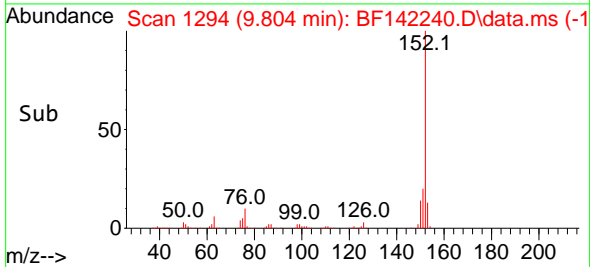
Supervised By :Jagrut Upadhyay 05/01/2025

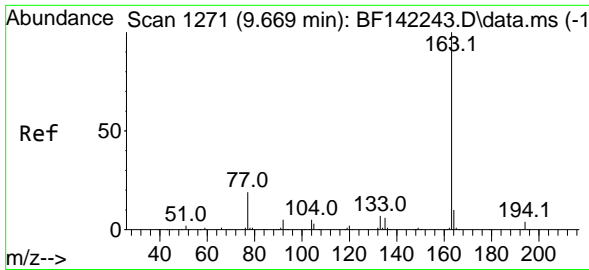


#49
 Acenaphthylene
 Concen: 5.504 ng
 RT: 9.804 min Scan# 1294
 Delta R.T. -0.006 min
 Lab File: BF142240.D
 Acq: 30 Apr 2025 11:52



Tgt Ion:152 Resp: 204157
 Ion Ratio Lower Upper
 152 100
 151 19.6 16.2 24.2
 153 12.9 10.7 16.1





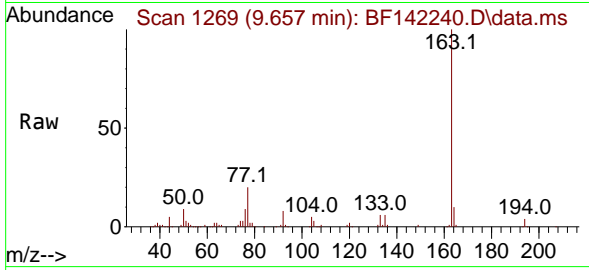
#50
 Dimethylphthalate
 Concen: 5.322 ng
 RT: 9.657 min Scan# 1269
 Delta R.T. -0.012 min
 Lab File: BF142240.D
 Acq: 30 Apr 2025 11:52

Instrument :

BNA_F

ClientSampleId :

SSTDICC005



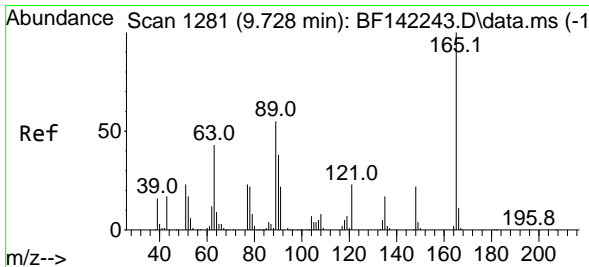
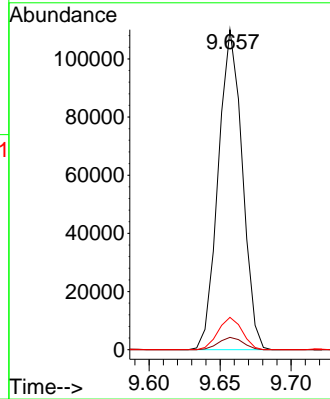
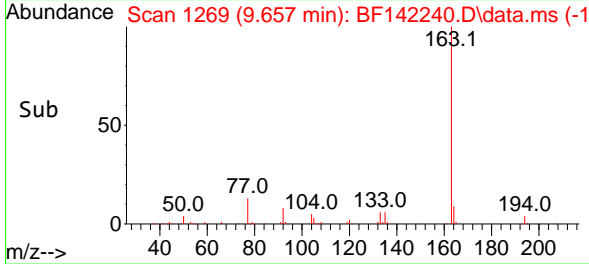
Tgt Ion:163 Resp: 129370
 Ion Ratio Lower Upper
 163 100
 194 3.9 3.2 4.8
 164 10.1 8.2 12.2

Manual Integrations

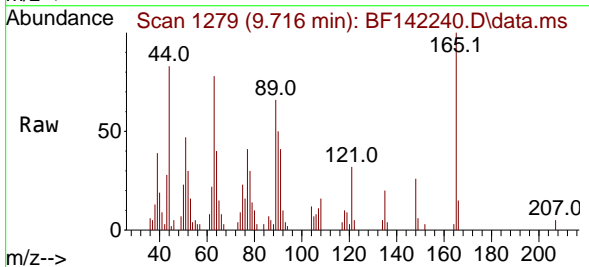
APPROVED

Reviewed By :Rahul Chavli 05/01/2025

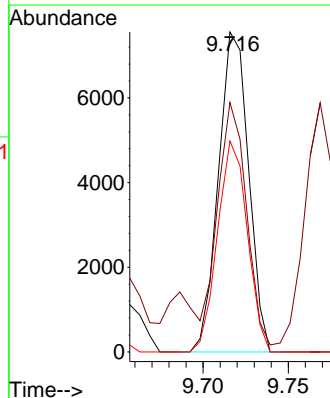
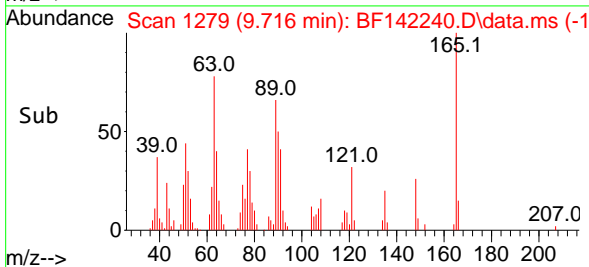
Supervised By :Jagrut Upadhyay 05/01/2025

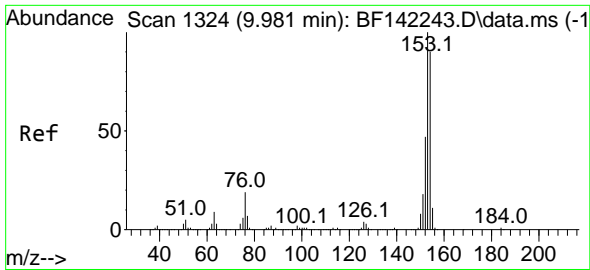


#51
 2,6-Dinitrotoluene
 Concen: 5.846 ng
 RT: 9.716 min Scan# 1279
 Delta R.T. -0.012 min
 Lab File: BF142240.D
 Acq: 30 Apr 2025 11:52



Tgt Ion:165 Resp: 9271
 Ion Ratio Lower Upper
 165 100
 63 77.9 48.5 72.7#
 89 65.9 43.9 65.9#





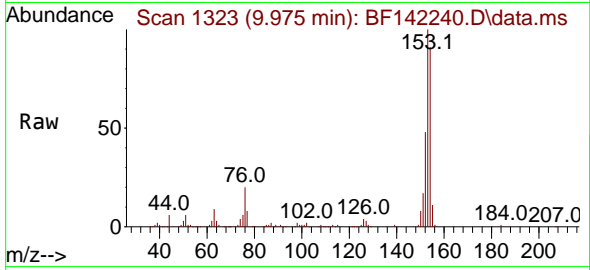
#52
 Acenaphthene
 Concen: 5.577 ng
 RT: 9.975 min Scan# 11
 Delta R.T. -0.006 min
 Lab File: BF142240.D
 Acq: 30 Apr 2025 11:52

Instrument :

BNA_F

Client Sample Id :

SSTDICC005



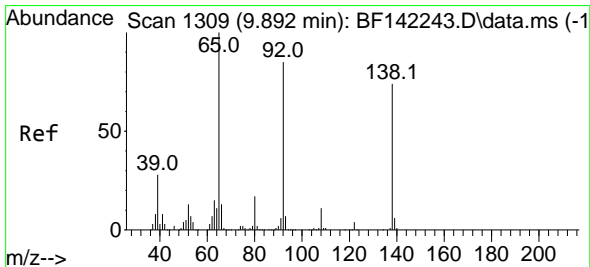
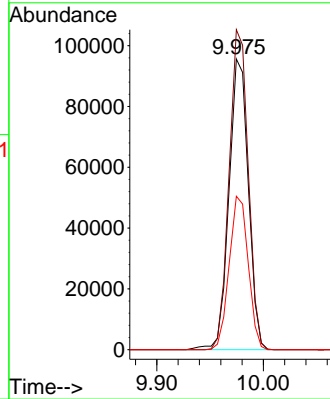
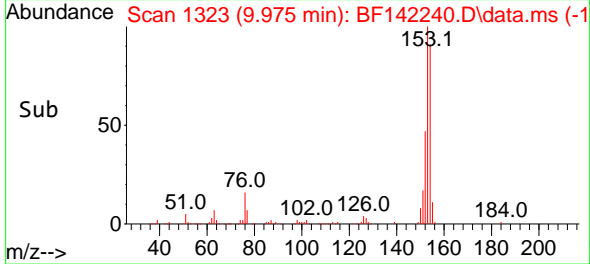
Tgt Ion:154 Resp: 12077
 Ion Ratio Lower Upper
 154 100
 153 110.1 88.6 133.0
 152 52.8 42.1 63.1

Manual Integrations

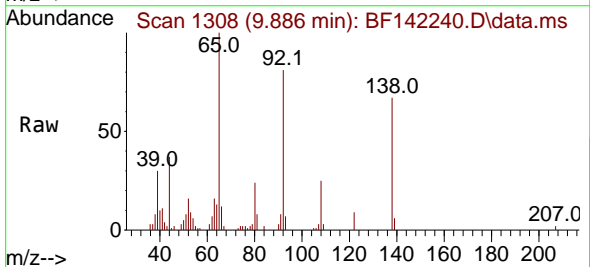
APPROVED

Reviewed By :Rahul Chavli 05/01/2025

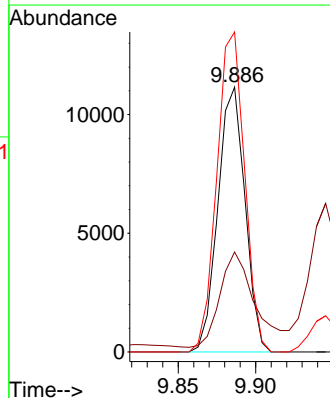
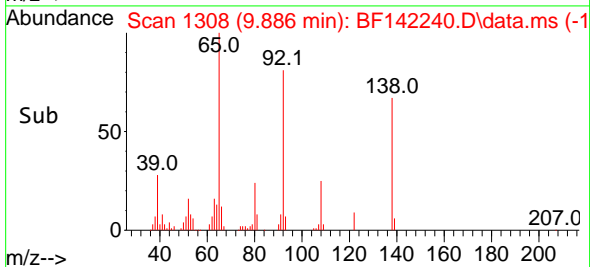
Supervised By :Jagrut Upadhyay 05/01/2025

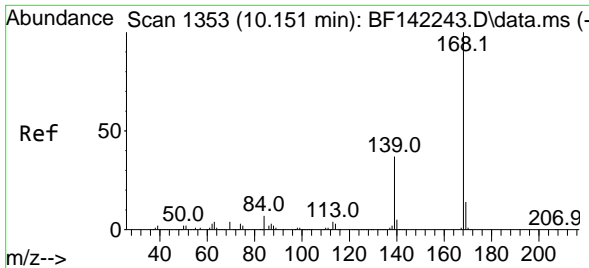


#53
 3-Nitroaniline
 Concen: 5.423 ng
 RT: 9.886 min Scan# 1308
 Delta R.T. -0.006 min
 Lab File: BF142240.D
 Acq: 30 Apr 2025 11:52



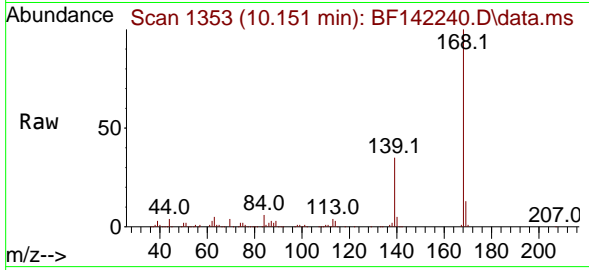
Tgt Ion:138 Resp: 13576
 Ion Ratio Lower Upper
 138 100
 108 37.8 11.7 17.5#
 92 120.9 91.2 136.8





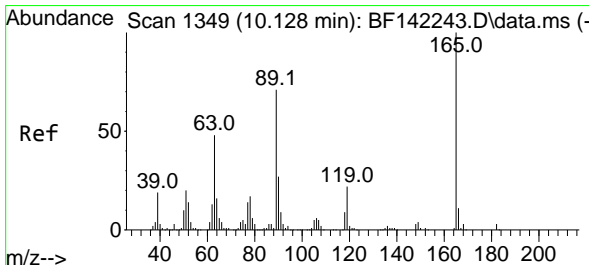
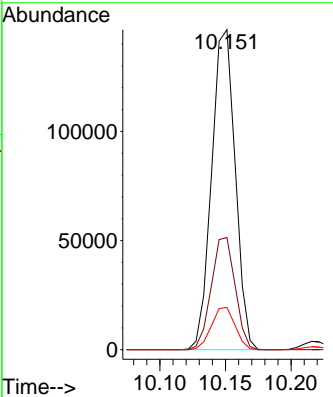
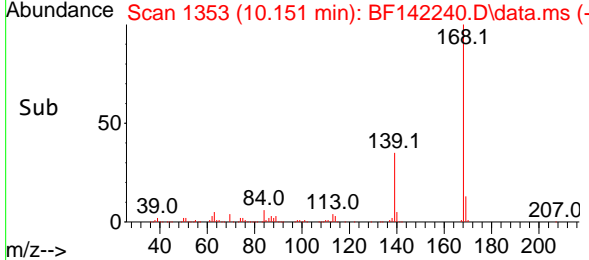
#55
 Dibenzofuran
 Concen: 5.649 ng
 RT: 10.151 min Scan# 111
 Delta R.T. -0.000 min
 Lab File: BF142240.D
 Acq: 30 Apr 2025 11:52

Instrument : BNA_F
 Client Sample Id : SSTDICC005

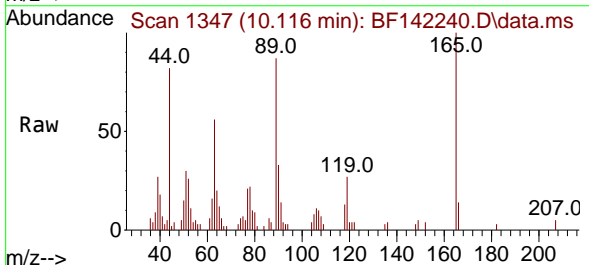


Tgt Ion:168 Resp: 18340
 Ion Ratio Lower Upper
 168 100
 139 35.1 29.4 44.0
 169 13.2 11.0 16.4

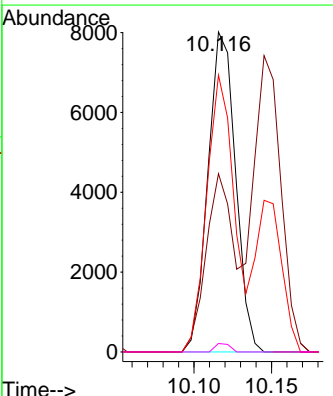
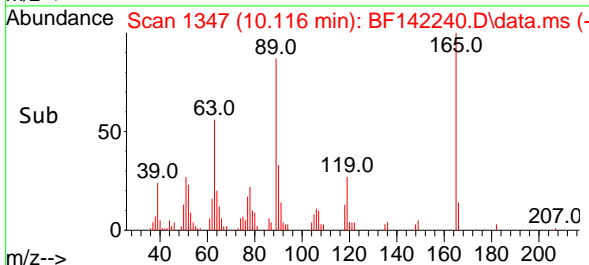
Manual Integrations
APPROVED
 Reviewed By :Rahul Chavli 05/01/2025
 Supervised By :Jagrut Upadhyay 05/01/2025

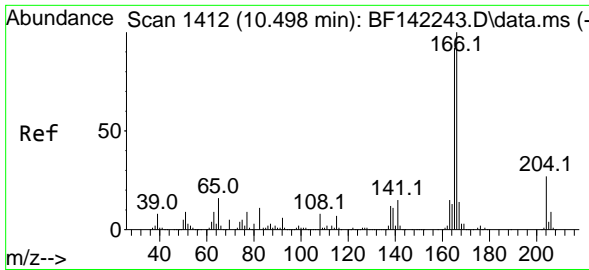


#57
 2,4-Dinitrotoluene
 Concen: 6.601 ng
 RT: 10.116 min Scan# 1347
 Delta R.T. -0.012 min
 Lab File: BF142240.D
 Acq: 30 Apr 2025 11:52



Tgt Ion:165 Resp: 9928
 Ion Ratio Lower Upper
 165 100
 63 55.7 38.8 58.2
 89 86.5 57.1 85.7#
 182 2.6 2.2 3.2





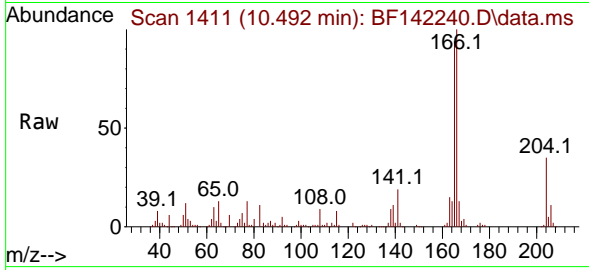
#58
 Fluorene
 Concen: 5.746 ng
 RT: 10.492 min Scan# 1411
 Delta R.T. -0.006 min
 Lab File: BF142240.D
 Acq: 30 Apr 2025 11:52

Instrument :

BNA_F

ClientSampleId :

SSTDICC005



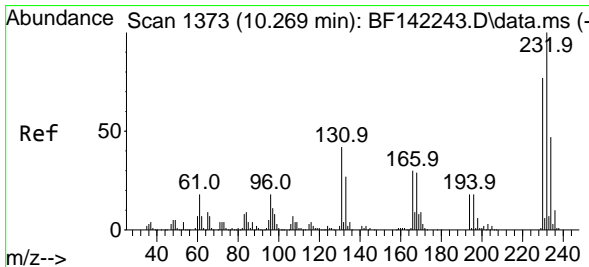
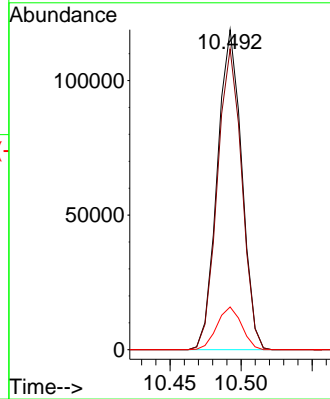
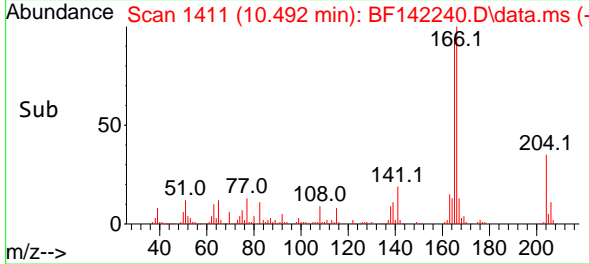
Tgt Ion:166 Resp: 14183
 Ion Ratio Lower Upper
 166 100
 165 94.0 73.9 110.9
 167 13.3 10.8 16.2

Manual Integrations

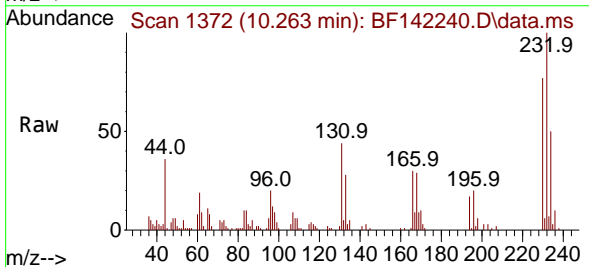
APPROVED

Reviewed By :Rahul Chavli 05/01/2025

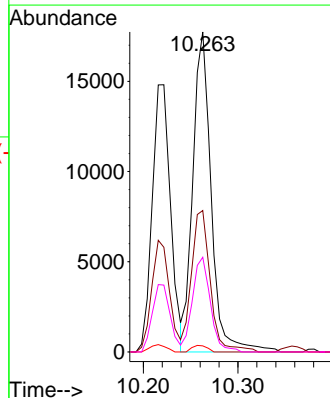
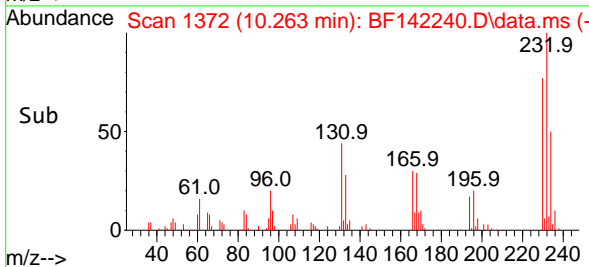
Supervised By :Jagrut Upadhyay 05/01/2025

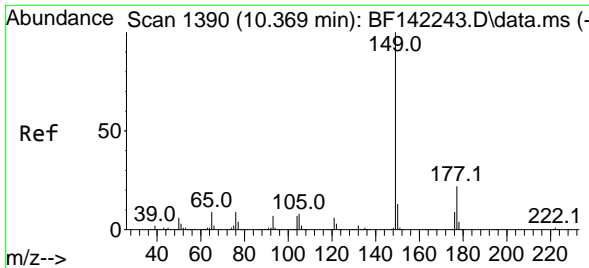


#59
 2,3,4,6-Tetrachlorophenol
 Concen: 4.154 ng m
 RT: 10.263 min Scan# 1372
 Delta R.T. -0.006 min
 Lab File: BF142240.D
 Acq: 30 Apr 2025 11:52



Tgt Ion:232 Resp: 23974
 Ion Ratio Lower Upper
 232 100
 131 33.9 35.9 53.9#
 130 2.0 1.8 2.6
 166 20.6 24.0 36.0#





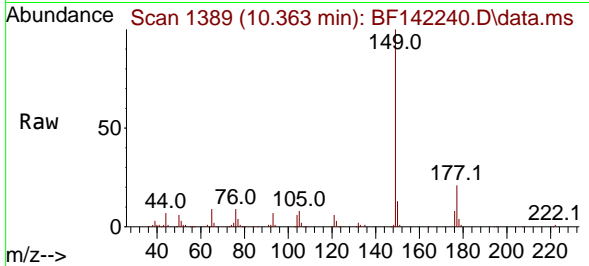
#60
 Diethylphthalate
 Concen: 5.238 ng
 RT: 10.363 min Scan# 1389
 Delta R.T. -0.006 min
 Lab File: BF142240.D
 Acq: 30 Apr 2025 11:52

Instrument :

BNA_F

ClientSampleId :

SSTDICC005



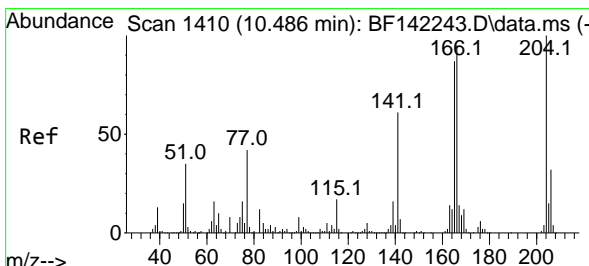
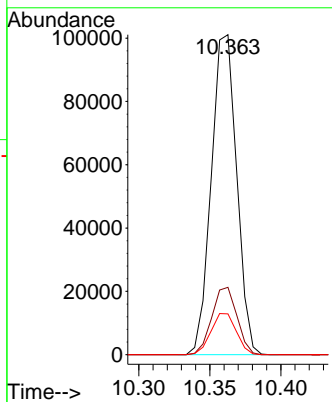
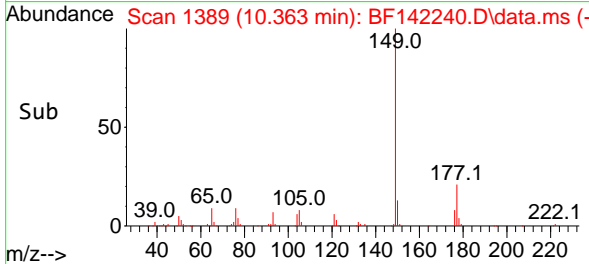
Tgt Ion:149 Resp: 125748
 Ion Ratio Lower Upper
 149 100
 177 21.0 17.6 26.4
 150 12.8 10.2 15.2

Manual Integrations

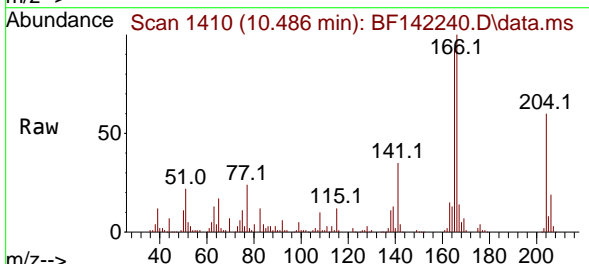
APPROVED

Reviewed By :Rahul Chavli 05/01/2025

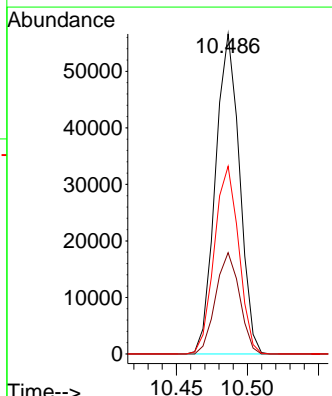
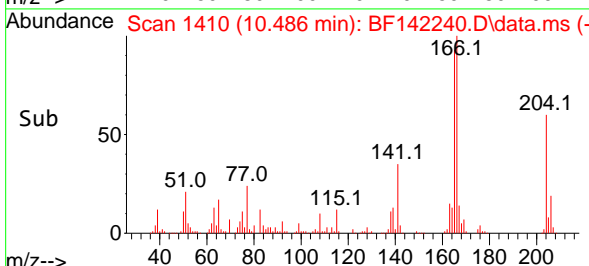
Supervised By :Jagrut Upadhyay 05/01/2025

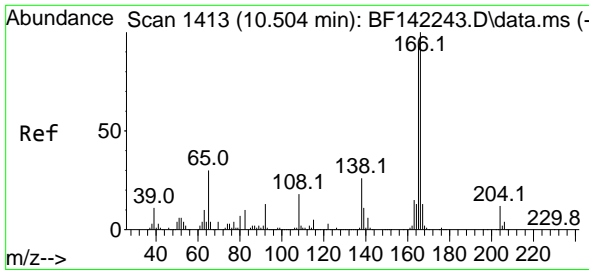


#61
 4-Chlorophenyl-phenylether
 Concen: 5.688 ng
 RT: 10.486 min Scan# 1410
 Delta R.T. -0.000 min
 Lab File: BF142240.D
 Acq: 30 Apr 2025 11:52



Tgt Ion:204 Resp: 66676
 Ion Ratio Lower Upper
 204 100
 206 31.7 25.6 38.4
 141 58.7 48.9 73.3





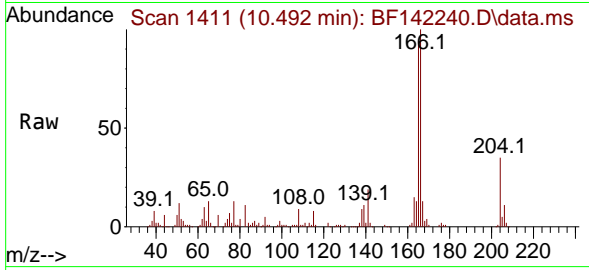
#62
 4-Nitroaniline
 Concen: 5.254 ng
 RT: 10.492 min Scan# 1411
 Delta R.T. -0.012 min
 Lab File: BF142240.D
 Acq: 30 Apr 2025 11:52

Instrument :

BNA_F

ClientSampleId :

SSTDICC005



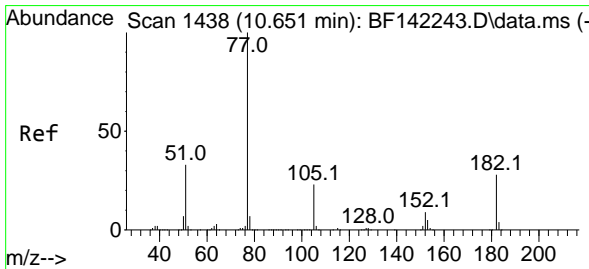
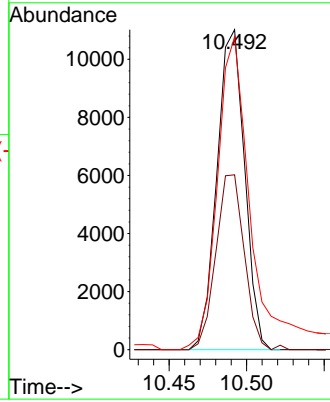
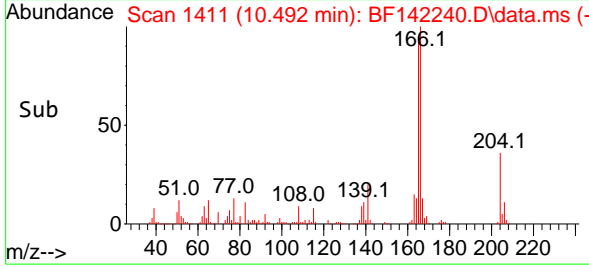
Tgt Ion:138 Resp: 1369
 Ion Ratio Lower Upper
 138 100
 92 54.7 29.2 69.2
 108 97.8 49.1 89.1

Manual Integrations

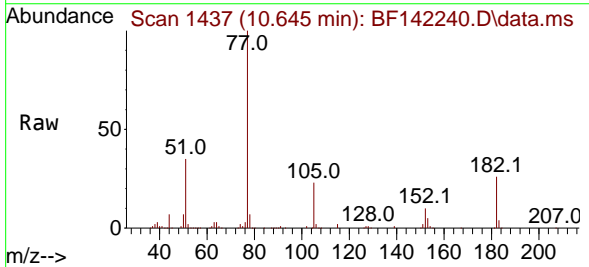
APPROVED

Reviewed By :Rahul Chavli 05/01/2025

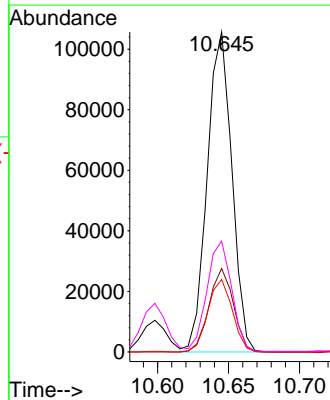
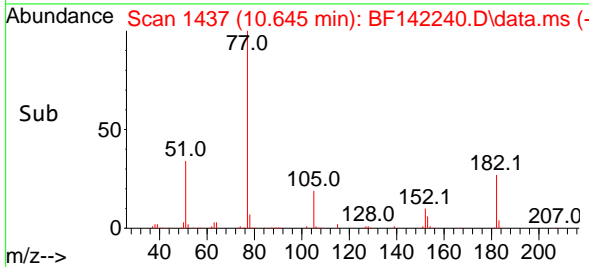
Supervised By :Jagrut Upadhyay 05/01/2025

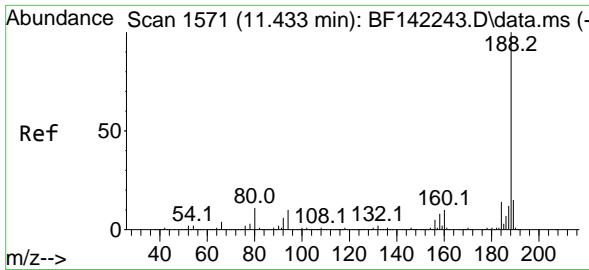


#63
 Azobenzene
 Concen: 5.394 ng
 RT: 10.645 min Scan# 1437
 Delta R.T. -0.006 min
 Lab File: BF142240.D
 Acq: 30 Apr 2025 11:52



Tgt Ion: 77 Resp: 127873
 Ion Ratio Lower Upper
 77 100
 182 26.1 7.3 47.3
 105 22.7 2.5 42.5
 51 34.7 14.4 54.4





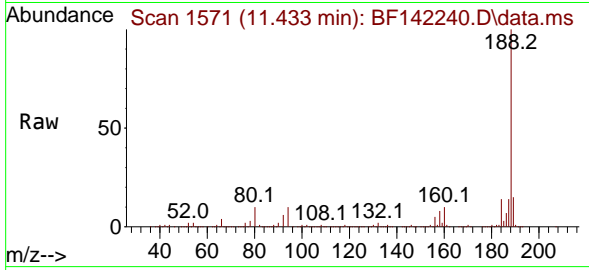
#64
 Phenanthrene-d10
 Concen: 20.000 ng
 RT: 11.433 min Scan# 11
 Delta R.T. -0.000 min
 Lab File: BF142240.D
 Acq: 30 Apr 2025 11:52

Instrument :

BNA_F

ClientSampleId :

SSTDICC005



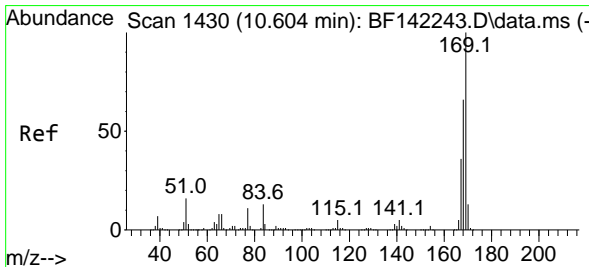
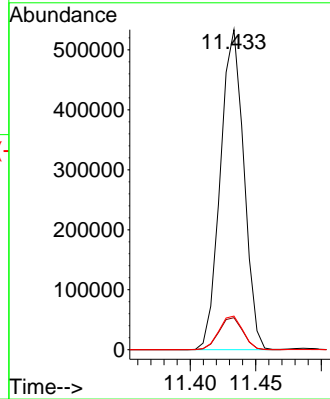
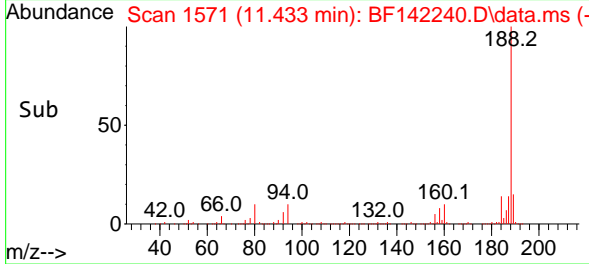
Tgt Ion:188 Resp: 66493
 Ion Ratio Lower Upper
 188 100
 94 10.0 8.2 12.2
 80 10.5 8.6 12.8

Manual Integrations

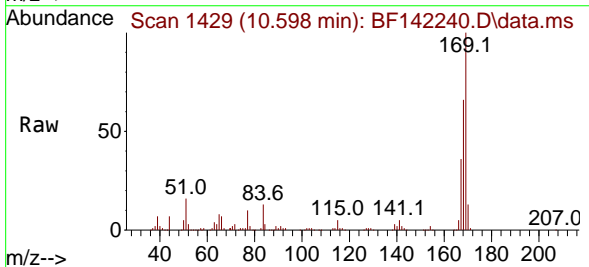
APPROVED

Reviewed By :Rahul Chavli 05/01/2025

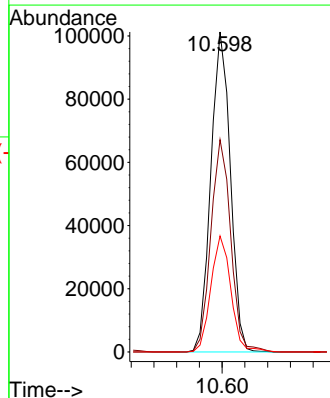
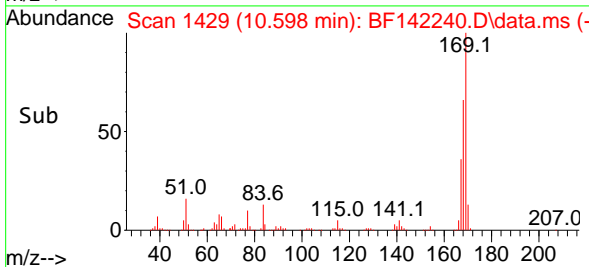
Supervised By :Jagrut Upadhyay 05/01/2025

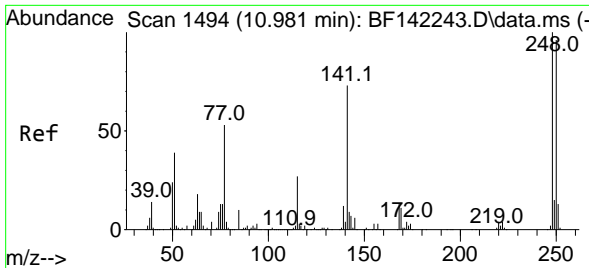


#66
 n-Nitrosodiphenylamine
 Concen: 5.317 ng
 RT: 10.598 min Scan# 1429
 Delta R.T. -0.006 min
 Lab File: BF142240.D
 Acq: 30 Apr 2025 11:52



Tgt Ion:169 Resp: 120800
 Ion Ratio Lower Upper
 169 100
 168 66.4 53.0 79.6
 167 36.3 28.8 43.2





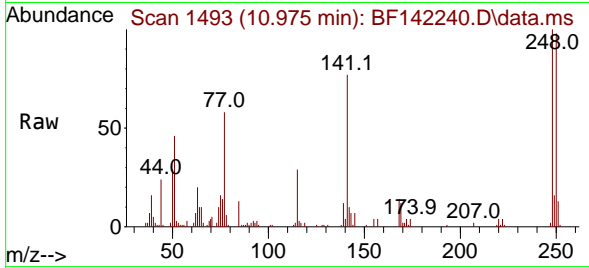
#67
 4-Bromophenyl-phenylether
 Concen: 5.030 ng
 RT: 10.975 min Scan# 1493
 Delta R.T. -0.006 min
 Lab File: BF142240.D
 Acq: 30 Apr 2025 11:52

Instrument :

BNA_F

ClientSampleId :

SSTDICC005

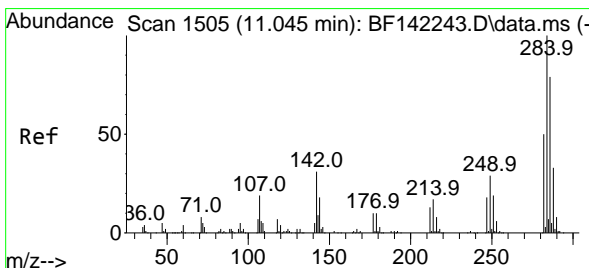
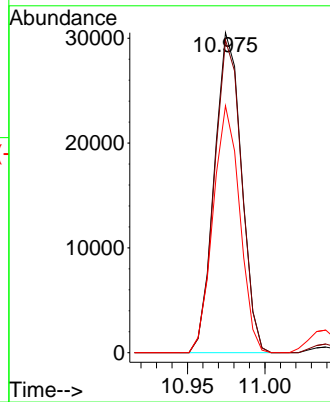
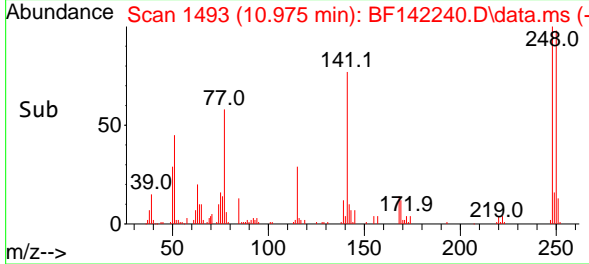


Tgt Ion:248 Resp: 37248
 Ion Ratio Lower Upper
 248 100
 250 97.7 77.2 115.8
 141 77.2 58.4 87.6

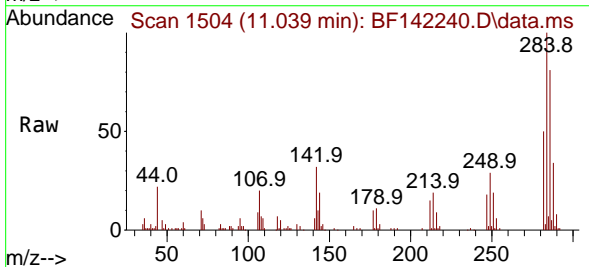
Manual Integrations

APPROVED

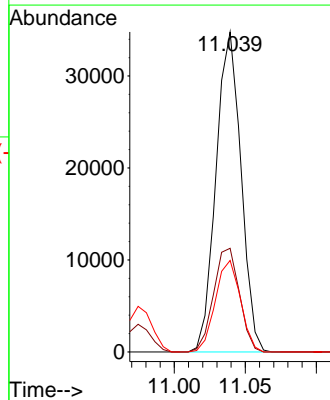
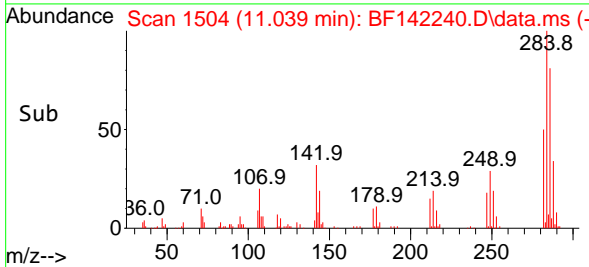
Reviewed By :Rahul Chavli 05/01/2025
 Supervised By :Jagrut Upadhyay 05/01/2025

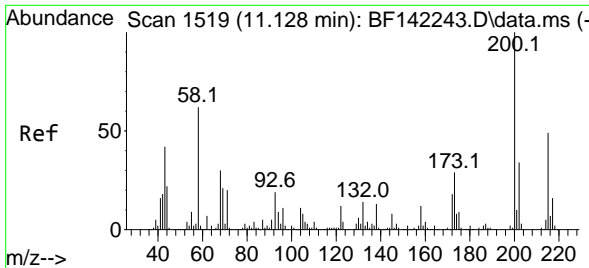


#68
 Hexachlorobenzene
 Concen: 5.131 ng
 RT: 11.039 min Scan# 1504
 Delta R.T. -0.006 min
 Lab File: BF142240.D
 Acq: 30 Apr 2025 11:52



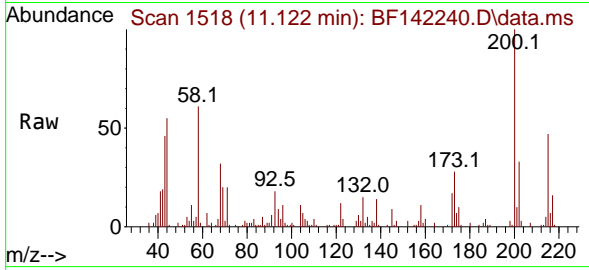
Tgt Ion:284 Resp: 42558
 Ion Ratio Lower Upper
 284 100
 142 32.4 24.6 37.0
 249 28.6 23.2 34.8





#69
Atrazine
 Concen: 4.614 ng
 RT: 11.122 min Scan# 1518
 Delta R.T. -0.006 min
 Lab File: BF142240.D
 Acq: 30 Apr 2025 11:52

Instrument :
 BNA_F
Client Sample Id :
 SSTDICC005

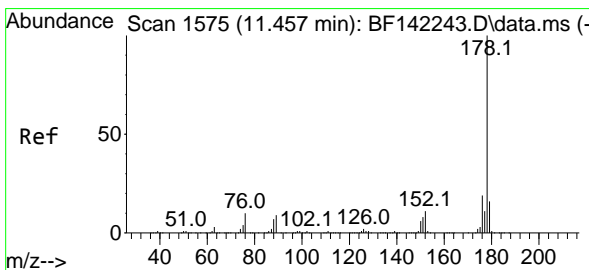
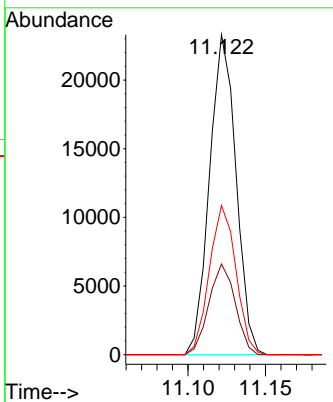
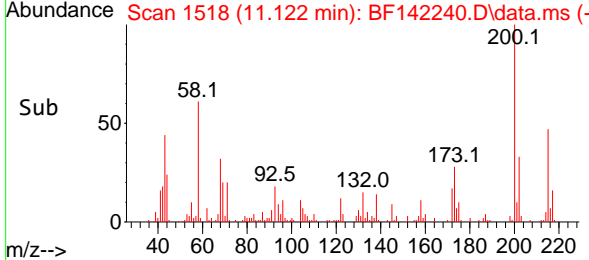


Tgt Ion: 200 Resp: 27629

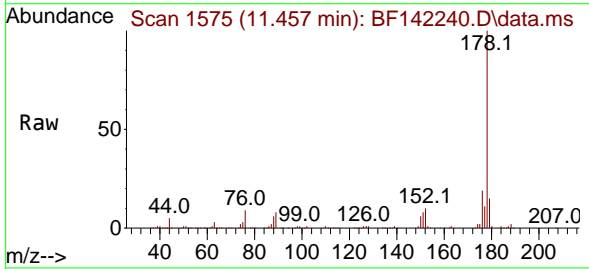
Ion	Ratio	Lower	Upper
200	100		
173	28.4	8.6	48.6
215	46.6	28.5	68.5

Manual Integrations
APPROVED

Reviewed By :Rahul Chavli 05/01/2025
 Supervised By :Jagrut Upadhyay 05/01/2025

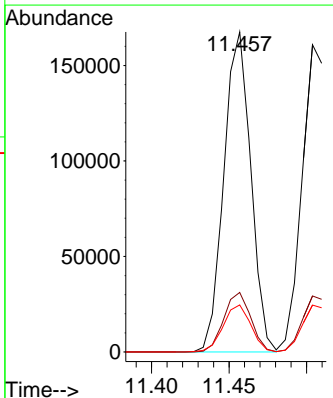
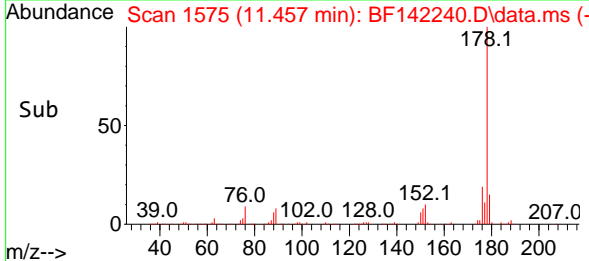


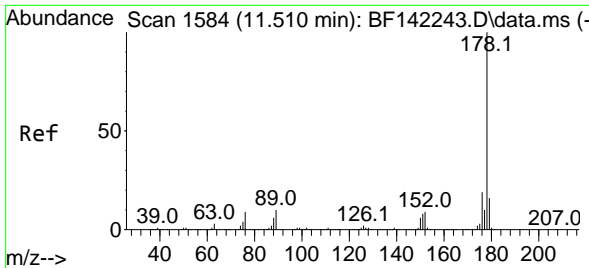
#71
Phenanthrene
 Concen: 5.637 ng
 RT: 11.457 min Scan# 1575
 Delta R.T. -0.000 min
 Lab File: BF142240.D
 Acq: 30 Apr 2025 11:52



Tgt Ion: 178 Resp: 202460

Ion	Ratio	Lower	Upper
178	100		
176	18.6	15.5	23.3
179	14.7	12.6	19.0





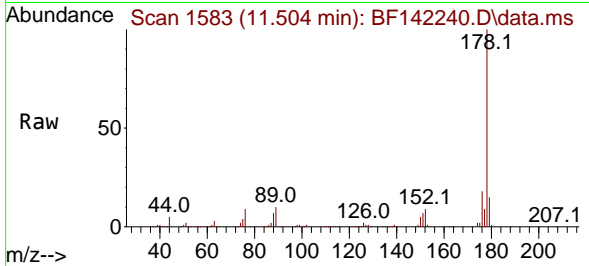
#72
 Anthracene
 Concen: 5.472 ng
 RT: 11.504 min Scan# 111
 Delta R.T. -0.006 min
 Lab File: BF142240.D
 Acq: 30 Apr 2025 11:52

Instrument :

BNA_F

ClientSampleId :

SSTDICC005

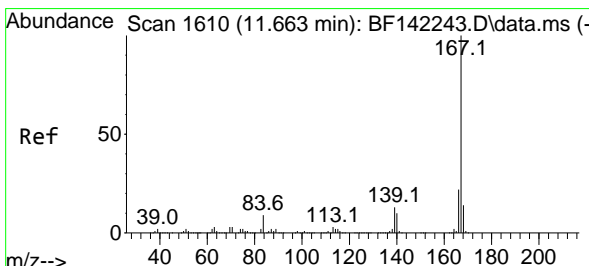
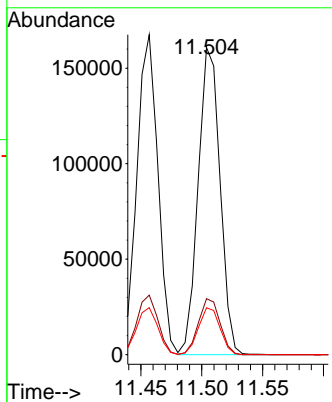
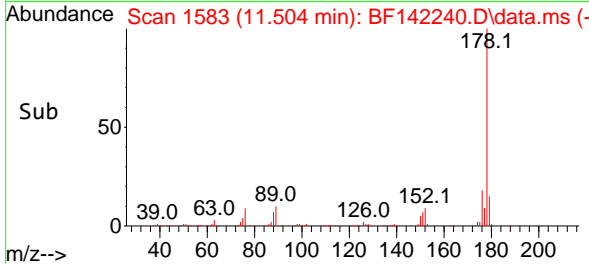


Tgt Ion:178 Resp: 200940
 Ion Ratio Lower Upper
 178 100
 176 18.2 15.3 22.9
 179 15.3 12.7 19.1

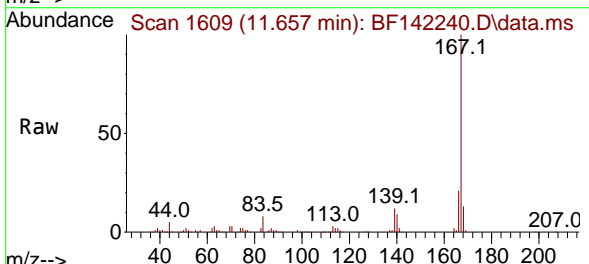
Manual Integrations

APPROVED

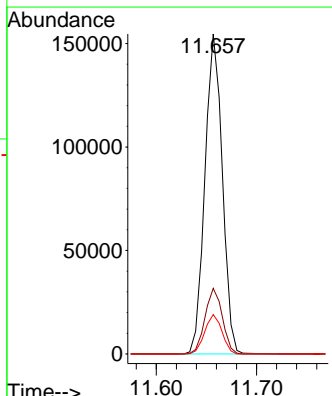
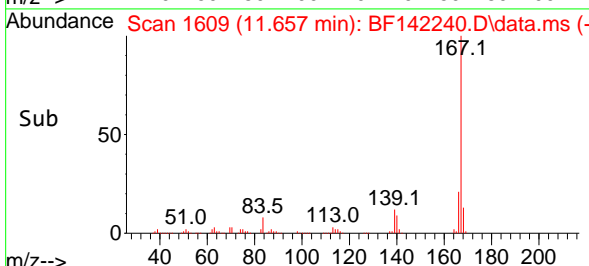
Reviewed By :Rahul Chavli 05/01/2025
 Supervised By :Jagrut Upadhyay 05/01/2025

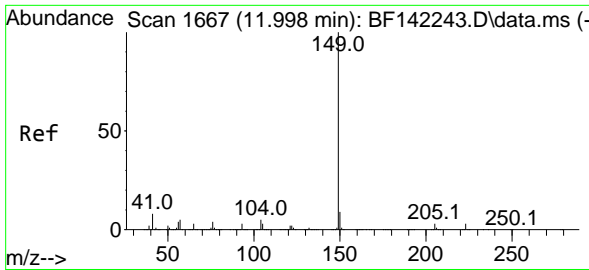


#73
 Carbazole
 Concen: 5.581 ng
 RT: 11.657 min Scan# 1609
 Delta R.T. -0.006 min
 Lab File: BF142240.D
 Acq: 30 Apr 2025 11:52



Tgt Ion:167 Resp: 186963
 Ion Ratio Lower Upper
 167 100
 166 20.5 17.3 25.9
 139 12.3 10.3 15.5





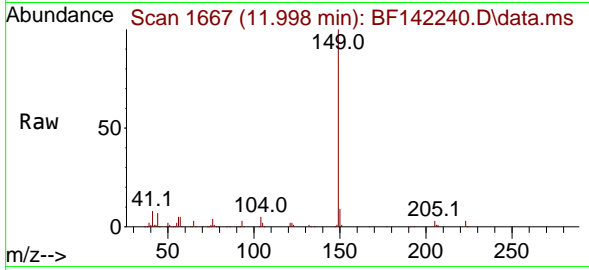
#74
 Di-n-butylphthalate
 Concen: 4.864 ng
 RT: 11.998 min Scan# 1667
 Delta R.T. -0.000 min
 Lab File: BF142240.D
 Acq: 30 Apr 2025 11:52

Instrument :

BNA_F

ClientSampleId :

SSTDICC005



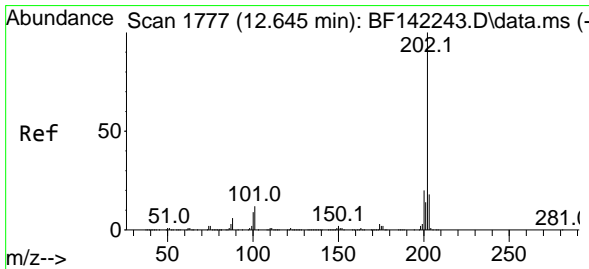
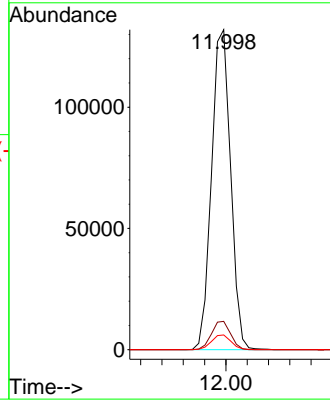
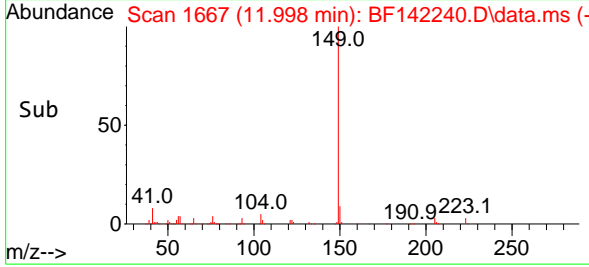
Tgt Ion:149 Resp: 163860
 Ion Ratio Lower Upper
 149 100
 150 8.9 7.5 11.3
 104 4.6 3.6 5.4

Manual Integrations

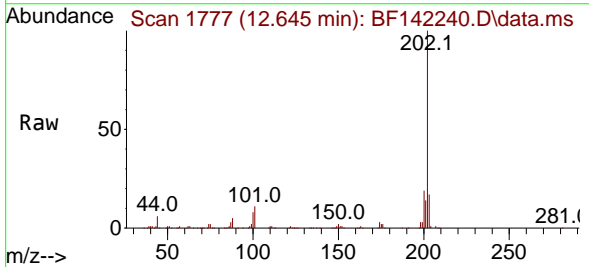
APPROVED

Reviewed By :Rahul Chavli 05/01/2025

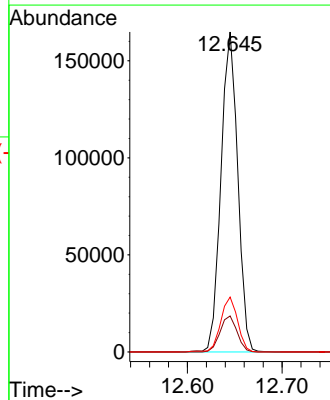
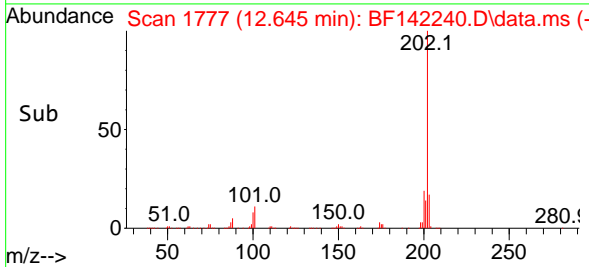
Supervised By :Jagrut Upadhyay 05/01/2025

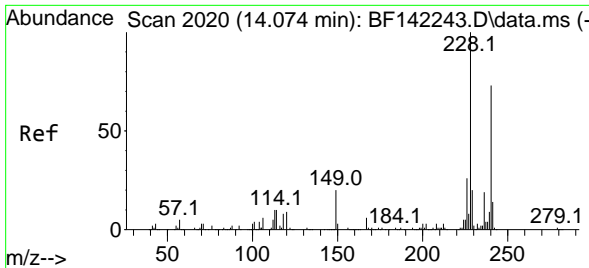


#75
 Fluoranthene
 Concen: 5.715 ng
 RT: 12.645 min Scan# 1777
 Delta R.T. -0.000 min
 Lab File: BF142240.D
 Acq: 30 Apr 2025 11:52



Tgt Ion:202 Resp: 202911
 Ion Ratio Lower Upper
 202 100
 101 11.3 0.0 32.4
 203 17.2 0.0 37.5





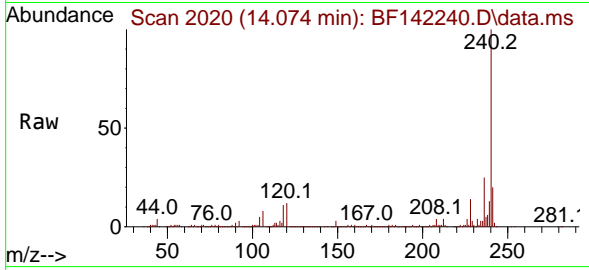
#76
 Chrysene-d12
 Concen: 20.000 ng
 RT: 14.074 min Scan# 2020
 Delta R.T. -0.000 min
 Lab File: BF142240.D
 Acq: 30 Apr 2025 11:52

Instrument :

BNA_F

ClientSampleId :

SSTDICC005



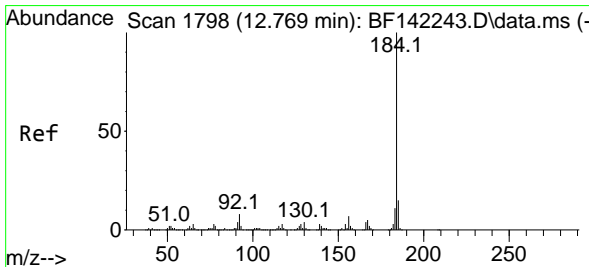
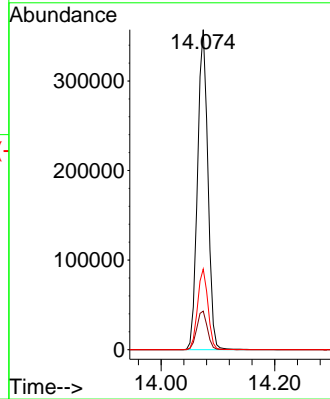
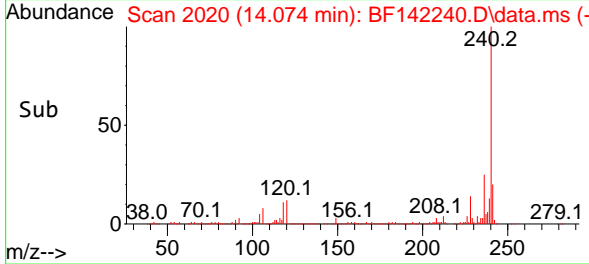
Tgt Ion:240 Resp: 45491
 Ion Ratio Lower Upper
 240 100
 120 12.1 10.1 15.1
 236 25.2 20.5 30.7

Manual Integrations

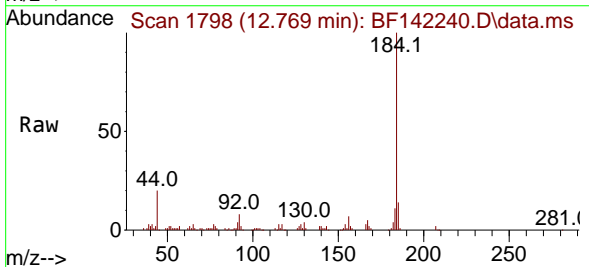
APPROVED

Reviewed By :Rahul Chavli 05/01/2025

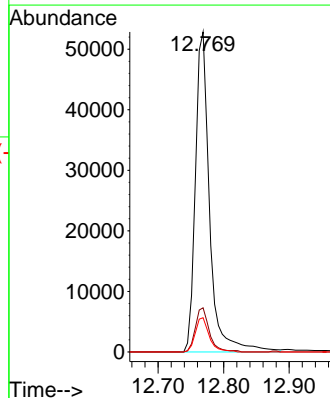
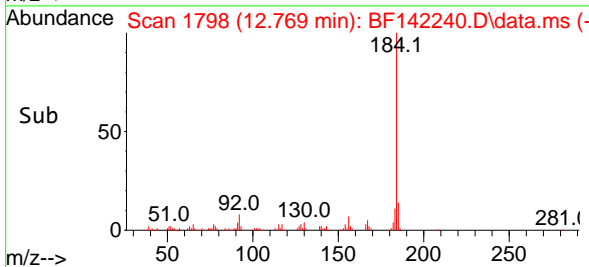
Supervised By :Jagrut Upadhyay 05/01/2025

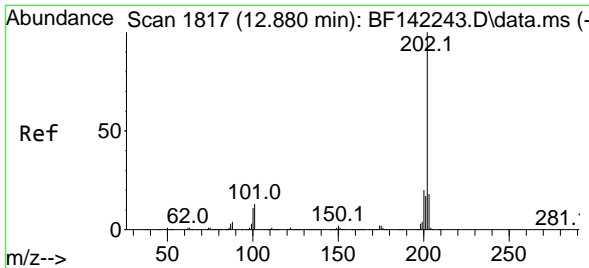


#77
 Benzidine
 Concen: 4.132 ng
 RT: 12.769 min Scan# 1798
 Delta R.T. -0.000 min
 Lab File: BF142240.D
 Acq: 30 Apr 2025 11:52



Tgt Ion:184 Resp: 79877
 Ion Ratio Lower Upper
 184 100
 185 13.8 11.8 17.6
 183 10.7 8.9 13.3





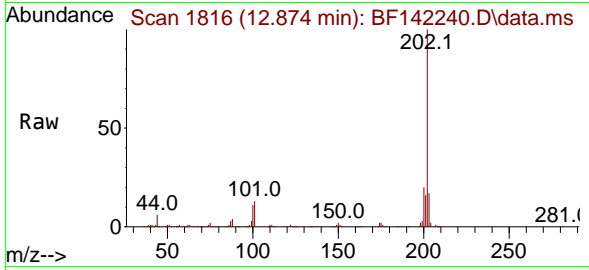
#78
 Pyrene
 Concen: 4.968 ng
 RT: 12.874 min Scan# 1816
 Delta R.T. -0.006 min
 Lab File: BF142240.D
 Acq: 30 Apr 2025 11:52

Instrument :

BNA_F

Client Sample Id :

SSTDICC005



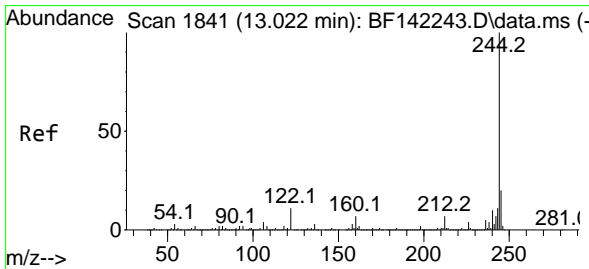
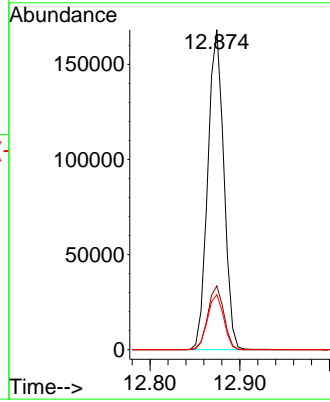
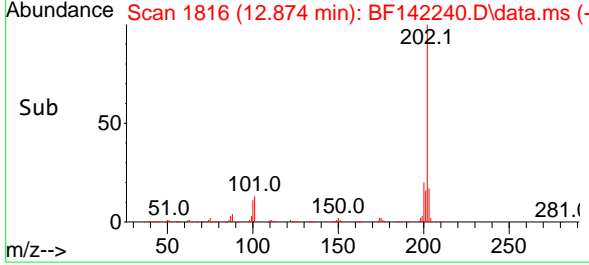
Tgt Ion: 202 Resp: 20846
 Ion Ratio Lower Upper
 202 100
 200 20.0 16.1 24.1
 203 17.2 14.1 21.1

Manual Integrations

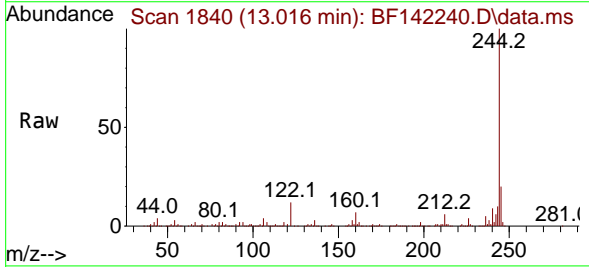
APPROVED

Reviewed By :Rahul Chavli 05/01/2025

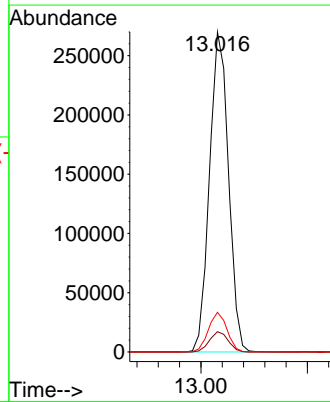
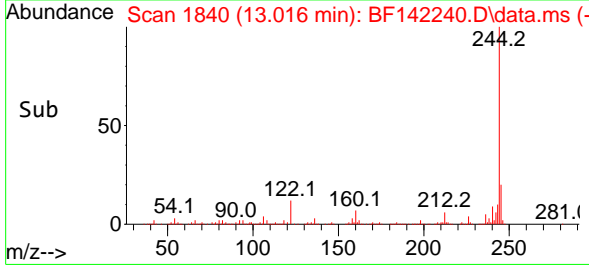
Supervised By :Jagrut Upadhyay 05/01/2025

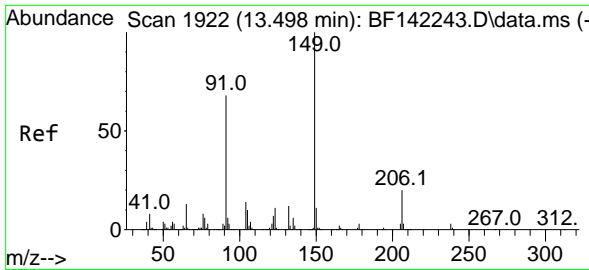


#79
 Terphenyl-d14
 Concen: 10.706 ng
 RT: 13.016 min Scan# 1840
 Delta R.T. -0.006 min
 Lab File: BF142240.D
 Acq: 30 Apr 2025 11:52



Tgt Ion: 244 Resp: 334852
 Ion Ratio Lower Upper
 244 100
 212 6.3 5.3 7.9
 122 12.4 9.1 13.7





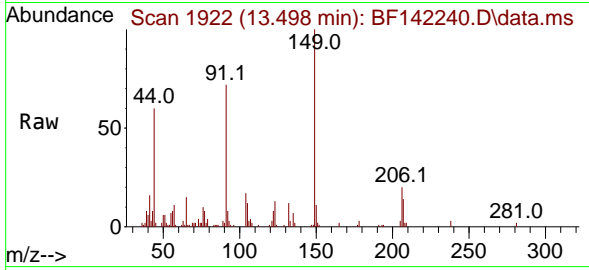
#80
 Butylbenzylphthalate
 Concen: 5.714 ng
 RT: 13.498 min Scan# 1922
 Delta R.T. -0.000 min
 Lab File: BF142240.D
 Acq: 30 Apr 2025 11:52

Instrument :

BNA_F

ClientSampleId :

SSTDICC005



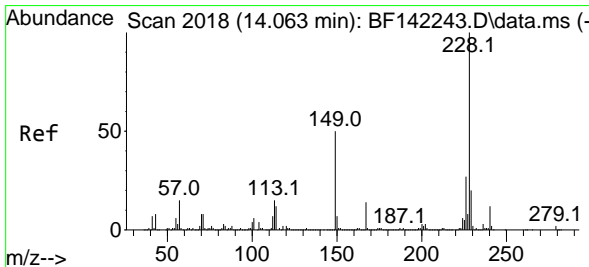
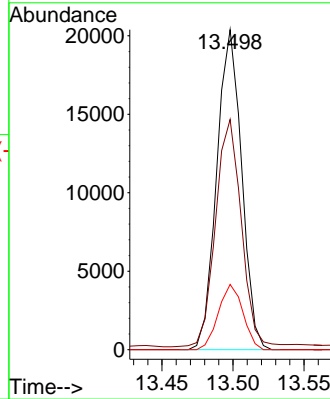
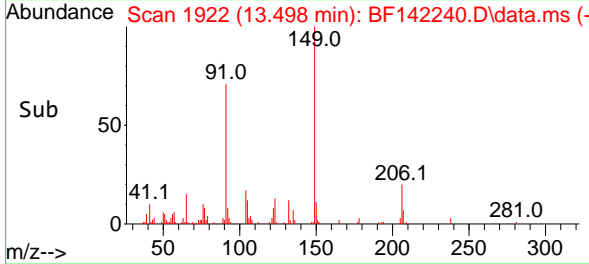
Tgt Ion:149 Resp: 24840
 Ion Ratio Lower Upper
 149 100
 91 71.9 54.4 81.6
 206 20.4 15.9 23.9

Manual Integrations

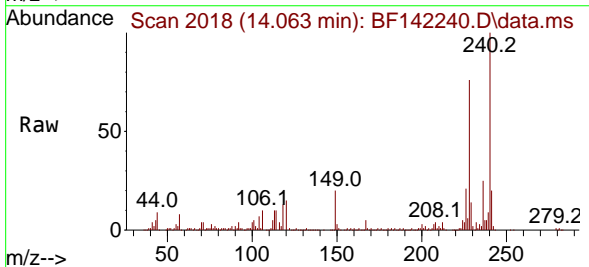
APPROVED

Reviewed By :Rahul Chavli 05/01/2025

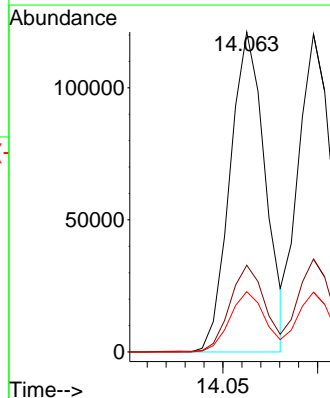
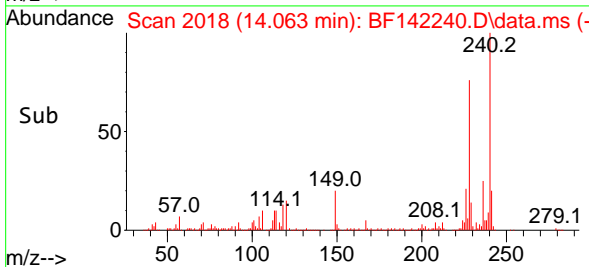
Supervised By :Jagrut Upadhyay 05/01/2025

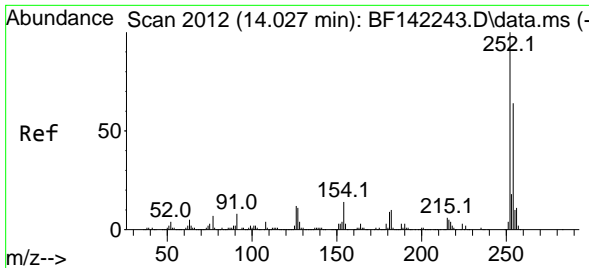


#81
 Benzo(a)anthracene
 Concen: 5.136 ng
 RT: 14.063 min Scan# 2018
 Delta R.T. -0.000 min
 Lab File: BF142240.D
 Acq: 30 Apr 2025 11:52



Tgt Ion:228 Resp: 156840
 Ion Ratio Lower Upper
 228 100
 226 27.1 21.9 32.9
 229 18.8 16.0 24.0





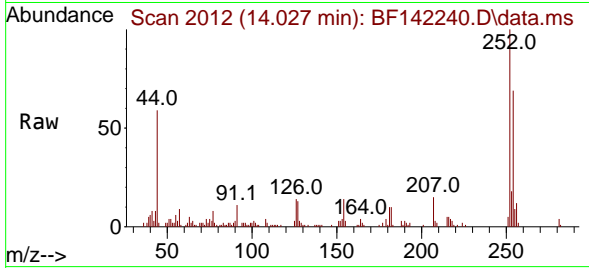
#82
 3,3'-Dichlorobenzidine
 Concen: 3.623 ng
 RT: 14.027 min Scan# 2012
 Delta R.T. -0.000 min
 Lab File: BF142240.D
 Acq: 30 Apr 2025 11:52

Instrument :

BNA_F

Client Sample Id :

SSTDICC005

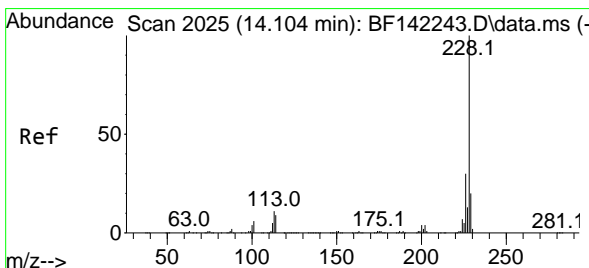
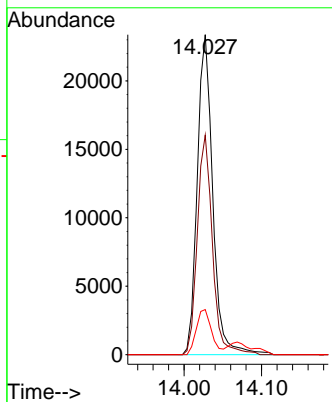
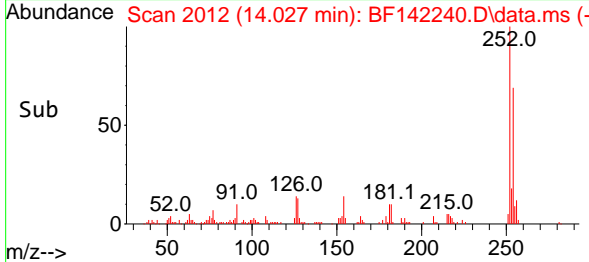


Tgt Ion: 252 Resp: 3250
 Ion Ratio Lower Upper
 252 100
 254 68.6 51.0 76.6
 126 14.1 9.4 14.2

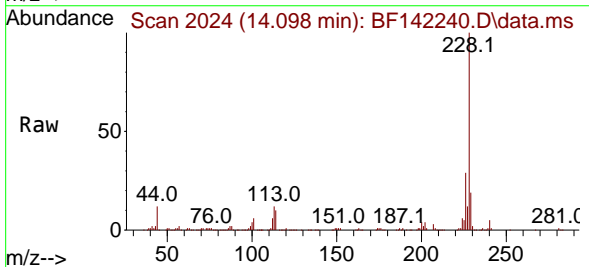
Manual Integrations

APPROVED

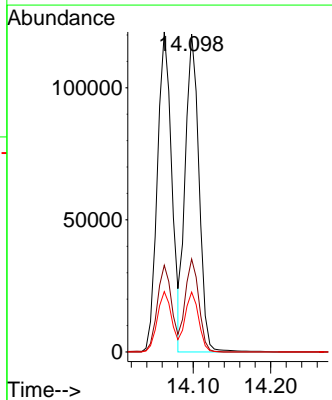
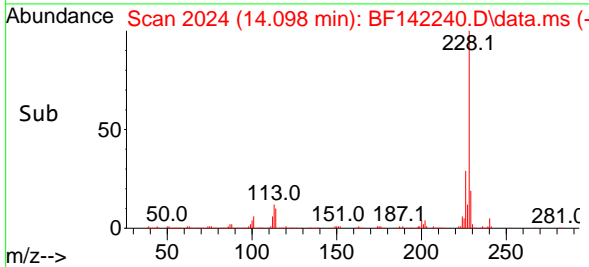
Reviewed By :Rahul Chavli 05/01/2025
 Supervised By :Jagrut Upadhyay 05/01/2025

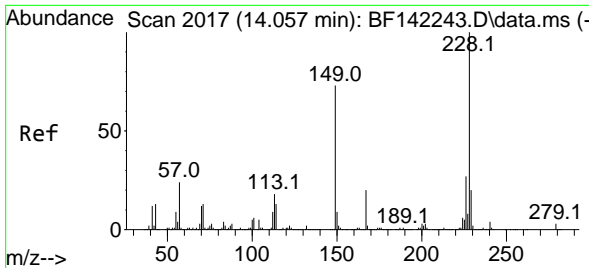


#83
 Chrysene
 Concen: 5.328 ng
 RT: 14.098 min Scan# 2024
 Delta R.T. -0.006 min
 Lab File: BF142240.D
 Acq: 30 Apr 2025 11:52



Tgt Ion: 228 Resp: 148119
 Ion Ratio Lower Upper
 228 100
 226 29.2 24.0 36.0
 229 18.8 15.7 23.5





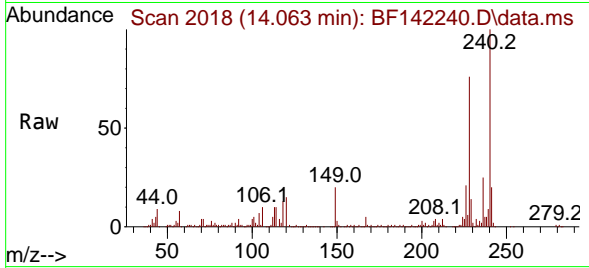
#84
 Bis(2-ethylhexyl)phthalate
 Concen: 6.006 ng
 RT: 14.063 min Scan# 2017
 Delta R.T. 0.006 min
 Lab File: BF142240.D
 Acq: 30 Apr 2025 11:52

Instrument :

BNA_F

Client Sample Id :

SSTDICC005

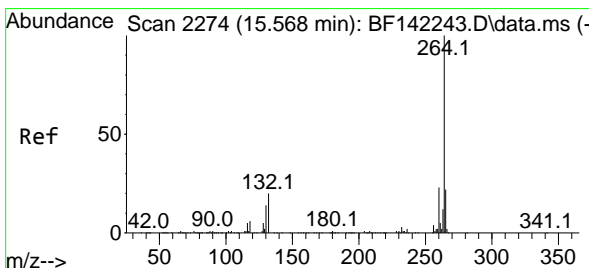
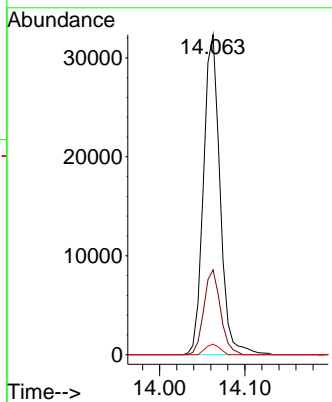
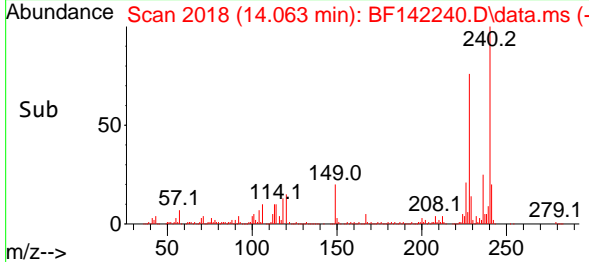


Tgt Ion:149 Resp: 43692
 Ion Ratio Lower Upper
 149 100
 167 26.5 21.7 32.5
 279 3.3 3.0 4.4

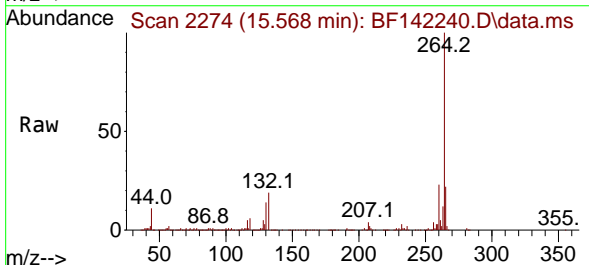
Manual Integrations

APPROVED

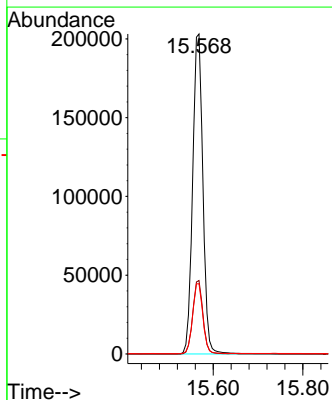
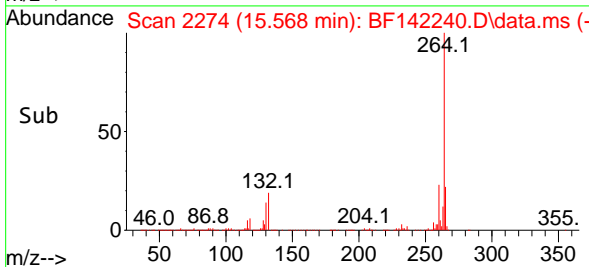
Reviewed By :Rahul Chavli 05/01/2025
 Supervised By :Jagrut Upadhyay 05/01/2025

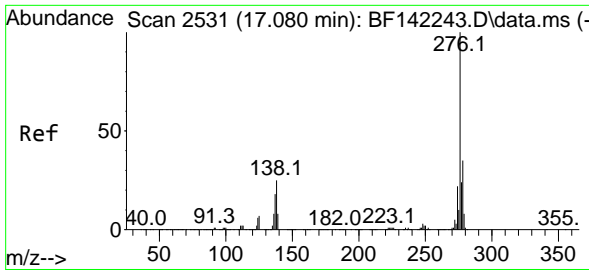


#86
 Perylene-d12
 Concen: 20.000 ng
 RT: 15.568 min Scan# 2274
 Delta R.T. -0.000 min
 Lab File: BF142240.D
 Acq: 30 Apr 2025 11:52



Tgt Ion:264 Resp: 322126
 Ion Ratio Lower Upper
 264 100
 260 22.9 18.4 27.6
 265 22.0 17.3 25.9





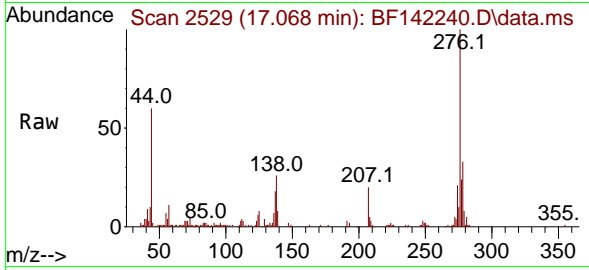
#87
 Indeno(1,2,3-cd)pyrene
 Concen: 4.516 ng
 RT: 17.068 min Scan# 2198
 Delta R.T. -0.012 min
 Lab File: BF142240.D
 Acq: 30 Apr 2025 11:52

Instrument :

BNA_F

Client Sample Id :

SSTDICC005



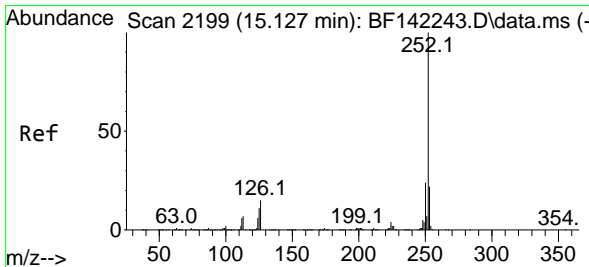
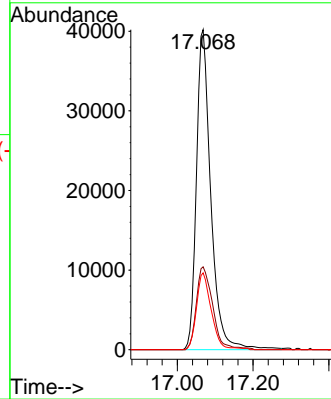
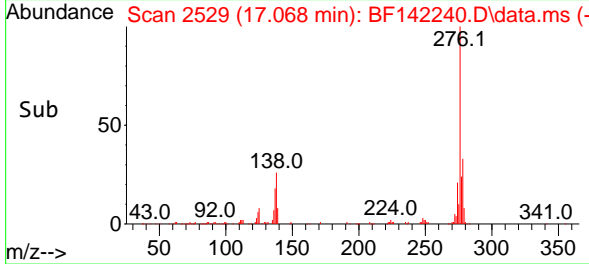
Tgt Ion: 276 Resp: 106554
 Ion Ratio Lower Upper
 276 100
 138 29.4 22.6 33.8
 277 24.7 20.1 30.1

Manual Integrations

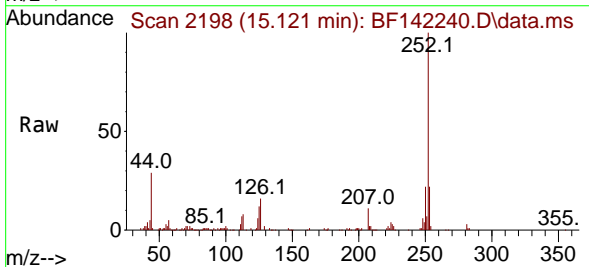
APPROVED

Reviewed By :Rahul Chavli 05/01/2025

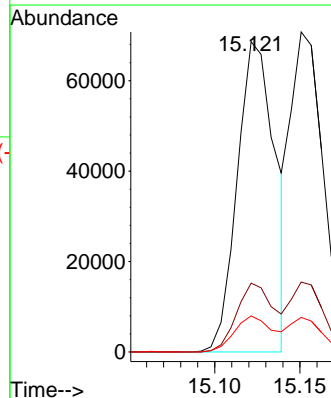
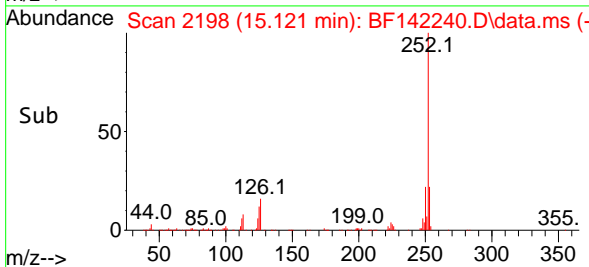
Supervised By :Jagrut Upadhyay 05/01/2025

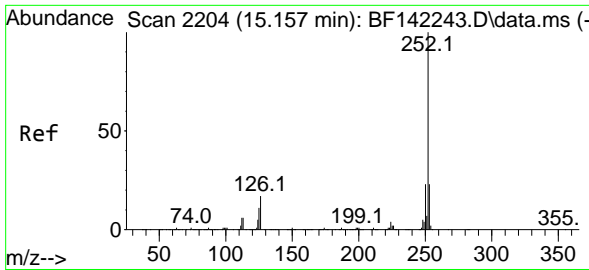


#88
 Benzo(b)fluoranthene
 Concen: 5.301 ng
 RT: 15.121 min Scan# 2198
 Delta R.T. -0.006 min
 Lab File: BF142240.D
 Acq: 30 Apr 2025 11:52



Tgt Ion: 252 Resp: 106072
 Ion Ratio Lower Upper
 252 100
 253 22.2 17.7 26.5
 125 11.6 9.0 13.4





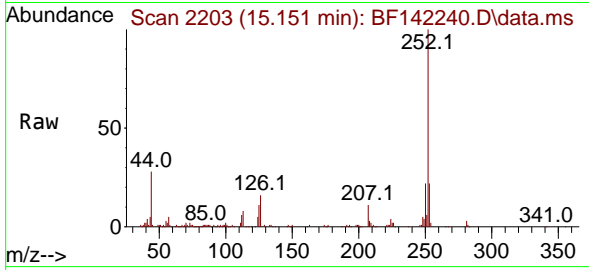
#89
 Benzo(k)fluoranthene
 Concen: 5.327 ng
 RT: 15.151 min Scan# 21
 Delta R.T. -0.006 min
 Lab File: BF142240.D
 Acq: 30 Apr 2025 11:52

Instrument :

BNA_F

Client SampleId :

SSTDICC005



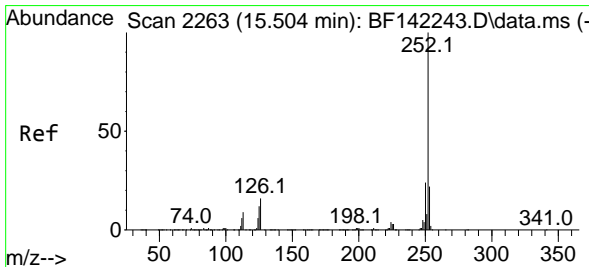
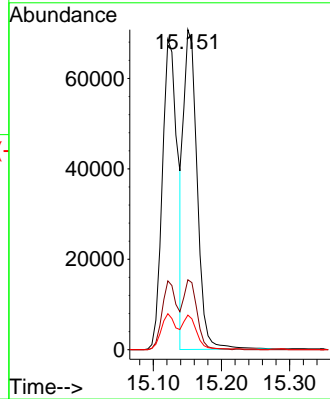
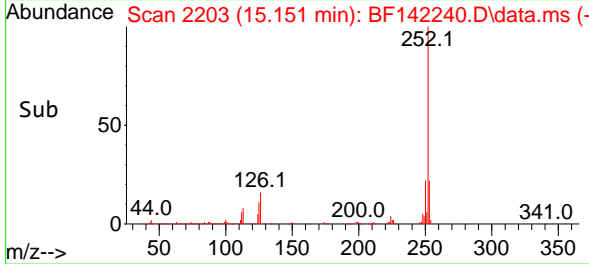
Tgt Ion:252 Resp: 97490
 Ion Ratio Lower Upper
 252 100
 253 21.9 17.8 26.8
 125 10.8 9.0 13.6

Manual Integrations

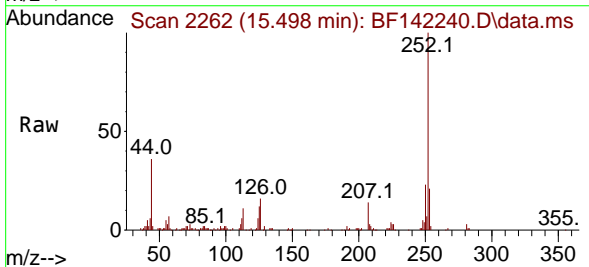
APPROVED

Reviewed By :Rahul Chavli 05/01/2025

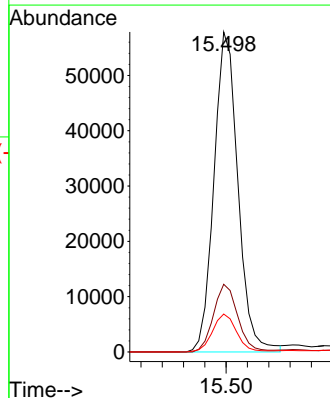
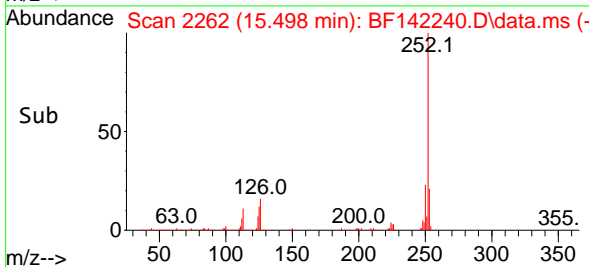
Supervised By :Jagrut Upadhyay 05/01/2025

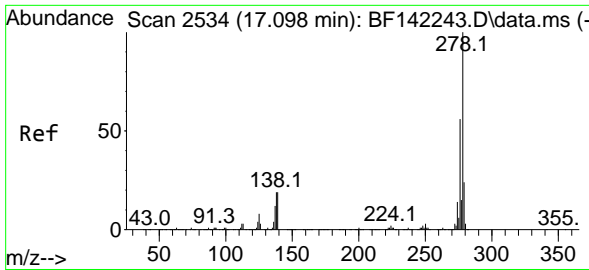


#90
 Benzo(a)pyrene
 Concen: 4.928 ng
 RT: 15.498 min Scan# 2262
 Delta R.T. -0.006 min
 Lab File: BF142240.D
 Acq: 30 Apr 2025 11:52



Tgt Ion:252 Resp: 90284
 Ion Ratio Lower Upper
 252 100
 253 21.1 17.6 26.4
 125 11.9 9.5 14.3





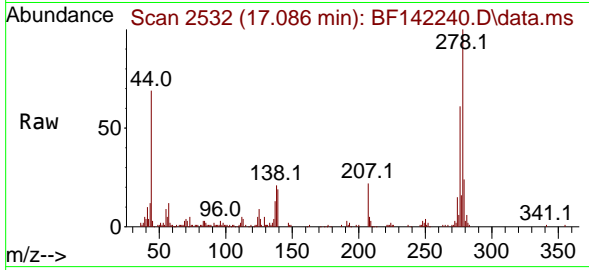
#91
 Dibenzo(a,h)anthracene
 Concen: 4.520 ng
 RT: 17.086 min Scan# 21
 Delta R.T. -0.012 min
 Lab File: BF142240.D
 Acq: 30 Apr 2025 11:52

Instrument :

BNA_F

ClientSampleId :

SSTDICC005



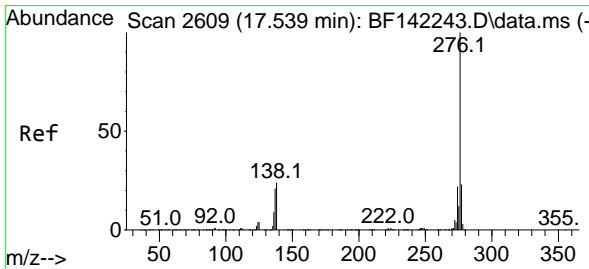
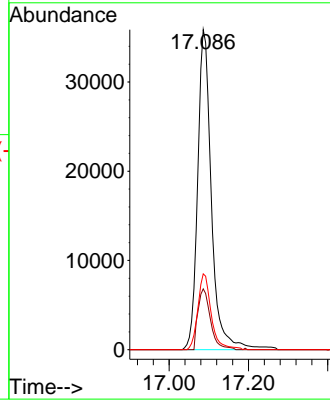
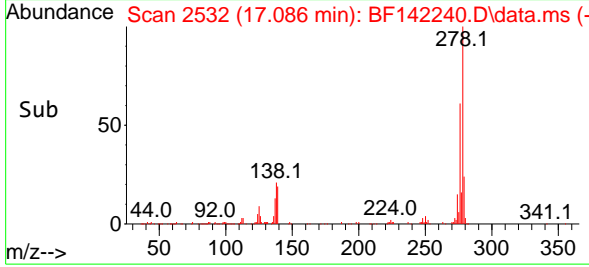
Tgt Ion:278 Resp: 8655
 Ion Ratio Lower Upper
 278 100
 139 19.0 15.2 22.8
 279 23.7 19.0 28.6

Manual Integrations

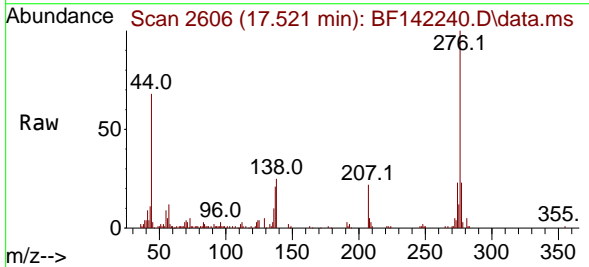
APPROVED

Reviewed By :Rahul Chavli 05/01/2025

Supervised By :Jagrut Upadhyay 05/01/2025



#92
 Benzo(g,h,i)perylene
 Concen: 4.500 ng
 RT: 17.521 min Scan# 2606
 Delta R.T. -0.018 min
 Lab File: BF142240.D
 Acq: 30 Apr 2025 11:52



Tgt Ion:276 Resp: 86631
 Ion Ratio Lower Upper
 276 100
 277 23.3 18.7 28.1
 138 25.0 19.4 29.0

