

Data Path : Z:\svoasrv\HPCHEM1\BNA_F\Data\BF061223\
 Data File : BF133712.D
 Acq On : 12 Jun 2023 19:36
 Operator : CG\JU
 Sample : 03044-09
 Misc :
 ALS Vial : 13 Sample Multiplier: 1

Instrument :
 BNA_F
 ClientSampleId :
 SB-04-5.0-7.0

Integration Parameters: rteint.p

Integrator: RTE
 Smoothing : ON Filtering: 5
 Sampling : 1 Min Area: 3 % of largest Peak
 Start Thrs: 0.2 Max Peaks: 100
 Stop Thrs : 0 Peak Location: TOP

If leading or trailing edge < 100 prefer < Baseline drop else tangent >
 Peak separation: 5

Method : Z:\svoasrv\HPCHEM1\BNA_F\Methods\8270-BF060923.M
 Title : ASP BNA STANDARDS FOR 5 POINT CALIBRATION

Signal : TIC: BF133712.D\data.ms

peak #	R.T. min	first scan	max scan	last scan	PK TY	peak height	corr. area	corr. % max.	% of total
1	5.440	566	570	573	rBV	1477125	1366780	11.35%	1.138%
2	6.457	738	743	746	rBV	1584465	1394441	11.58%	1.161%
3	6.828	803	806	810	rBV	512871	448679	3.73%	0.373%
4	7.392	898	902	905	rVB	1109815	859324	7.14%	0.715%
5	8.116	1021	1025	1027	rBV	649151	578394	4.80%	0.481%
6	8.133	1027	1028	1032	rVB	607691	397914	3.31%	0.331%
7	8.828	1143	1146	1149	rBV	369960	272770	2.27%	0.227%
8	8.928	1158	1163	1166	rBV	307416	253070	2.10%	0.211%
9	9.192	1204	1208	1211	rBV	1667061	1463340	12.16%	1.218%
10	9.457	1247	1253	1256	rBV	170404	238373	1.98%	0.198%
11	9.528	1261	1265	1267	rBV	311904	287660	2.39%	0.239%
12	9.728	1297	1299	1303	rVB	340985	277498	2.31%	0.231%
13	9.869	1321	1323	1326	rVV	610777	475085	3.95%	0.395%
14	9.904	1326	1329	1332	rVV	1619581	1242134	10.32%	1.034%
15	10.075	1354	1358	1362	rVV	1083858	897787	7.46%	0.747%
16	10.422	1413	1417	1422	rVB	1092003	1040214	8.64%	0.866%
17	10.504	1429	1431	1433	rVV	265825	223960	1.86%	0.186%
18	10.575	1441	1443	1448	rVV2	496116	459416	3.82%	0.382%
19	10.657	1448	1457	1461	rVV	1291041	1344549	11.17%	1.119%
20	10.780	1473	1478	1482	rVB3	151922	193452	1.61%	0.161%
21	10.969	1503	1510	1512	rBV4	331204	504276	4.19%	0.420%
22	11.098	1526	1532	1533	rBV2	237052	302918	2.52%	0.252%
23	11.116	1533	1535	1537	rVV2	228942	204547	1.70%	0.170%
24	11.169	1540	1544	1547	rVB	455971	464274	3.86%	0.386%
25	11.222	1547	1553	1555	rBV3	308340	477959	3.97%	0.398%
26	11.257	1555	1559	1562	rVB	758775	590325	4.90%	0.491%
27	11.404	1572	1584	1587	rBV	6443258	9869774	81.99%	8.215%
28	11.445	1587	1591	1594	rVV	2494701	2318777	19.26%	1.930%
29	11.592	1610	1616	1619	rBV2	921116	983379	8.17%	0.819%
30	11.657	1624	1627	1630	rVV3	331982	280448	2.33%	0.233%
31	11.692	1630	1633	1638	rVB4	203195	225875	1.88%	0.188%
32	11.869	1657	1663	1665	rBV	1246991	1313260	10.91%	1.093%
33	11.898	1665	1668	1671	rVB	1884272	1663819	13.82%	1.385%
34	11.945	1671	1676	1678	rBV	714219	678313	5.63%	0.565%
35	11.980	1678	1682	1684	rVV	2022404	2092872	17.39%	1.742%
36	12.004	1684	1686	1689	rVB	974163	730164	6.07%	0.608%

Data Path : Z:\svoasrv\HPCHEM1\BNA_F\Data\BF061223\
 Data File : BF133712.D
 Acq On : 12 Jun 2023 19:36
 Operator : CG\JU
 Sample : 03044-09
 Misc :
 ALS Vial : 13 Sample Multiplier: 1

Instrument :
 BNA_F
 ClientSampleId :
 SB-04-5.0-7.0

Integration Parameters: rteint.p

Integrator: RTE
 Smoothing : ON Filtering: 5
 Sampling : 1 Min Area: 3 % of largest Peak
 Start Thrs: 0.2 Max Peaks: 100
 Stop Thrs : 0 Peak Location: TOP

If leading or trailing edge < 100 prefer < Baseline drop else tangent >
 Peak separation: 5

Method : Z:\svoasrv\HPCHEM1\BNA_F\Methods\8270-BF060923.M
 Title : ASP BNA STANDARDS FOR 5 POINT CALIBRATION

37	12.163	1710	1713	1715	rBV	1063496	862837	7.17%	0.718%
38	12.192	1715	1718	1721	rVB	931426	808283	6.71%	0.673%
39	12.310	1733	1738	1741	rBV	377585	433106	3.60%	0.360%
40	12.369	1745	1748	1751	rVB2	253779	239079	1.99%	0.199%
41	12.416	1752	1756	1759	rBV	648791	752011	6.25%	0.626%
42	12.457	1759	1763	1765	rVV3	473522	628891	5.22%	0.523%
43	12.516	1769	1773	1779	rVB2	590958	791476	6.57%	0.659%
44	12.610	1780	1789	1791	rBV	7126498	11297699	93.85%	9.403%
45	12.645	1794	1795	1798	rVV2	267309	226438	1.88%	0.188%
46	12.680	1798	1801	1804	rVB	255071	239494	1.99%	0.199%
47	12.733	1804	1810	1813	rBV	772182	807034	6.70%	0.672%
48	12.839	1820	1828	1830	rBV3	6423063	12037755	100.00%	10.019%
49	12.863	1830	1832	1837	rVB2	739346	681035	5.66%	0.567%
50	12.933	1840	1844	1845	rBV	743980	710547	5.90%	0.591%
51	12.951	1845	1847	1849	rVV	1351126	1307038	10.86%	1.088%
52	12.974	1849	1851	1854	rVB	748637	616543	5.12%	0.513%
53	13.033	1854	1861	1864	rBV2	771694	1402595	11.65%	1.167%
54	13.116	1872	1875	1877	rVV2	700643	832327	6.91%	0.693%
55	13.145	1877	1880	1882	rVB	1422802	1298381	10.79%	1.081%
56	13.174	1882	1885	1888	rBV3	194799	277122	2.30%	0.231%
57	13.210	1888	1891	1893	rVV	939657	821881	6.83%	0.684%
58	13.245	1893	1897	1900	rVV2	1155591	1477405	12.27%	1.230%
59	13.274	1900	1902	1904	rVV	346792	325712	2.71%	0.271%
60	13.304	1904	1907	1910	rVV2	293391	315148	2.62%	0.262%
61	13.339	1910	1913	1915	rVV	663856	577573	4.80%	0.481%
62	13.368	1915	1918	1921	rVV2	684707	751349	6.24%	0.625%
63	13.527	1940	1945	1949	rBV4	304422	609321	5.06%	0.507%
64	13.563	1949	1951	1954	rVV	332793	379108	3.15%	0.316%
65	13.651	1963	1966	1970	rVV	908518	951881	7.91%	0.792%
66	13.763	1981	1985	1987	rVV	913438	965251	8.02%	0.803%
67	13.792	1987	1990	1992	rVV	1038656	978489	8.13%	0.814%
68	13.815	1992	1994	1999	rVV2	724129	1105050	9.18%	0.920%
69	13.868	1999	2003	2006	rVB	835769	931817	7.74%	0.776%
70	13.927	2009	2013	2017	rBV	229809	358588	2.98%	0.298%
71	14.015	2020	2028	2031	rBV2	3757274	6339976	52.67%	5.277%
72	14.057	2031	2035	2038	rVV	3813032	4607525	38.28%	3.835%
73	14.127	2044	2047	2051	rVB	825765	636341	5.29%	0.530%
74	14.168	2051	2054	2057	rBV3	177019	308040	2.56%	0.256%
75	14.239	2062	2066	2069	rVV2	465201	671234	5.58%	0.559%
76	14.274	2069	2072	2074	rVB3	208828	203619	1.69%	0.169%

Data Path : Z:\svoasrv\HPCHEM1\BNA_F\Data\BF061223\
 Data File : BF133712.D
 Acq On : 12 Jun 2023 19:36
 Operator : CG\JU
 Sample : 03044-09
 Misc :
 ALS Vial : 13 Sample Multiplier: 1

Instrument :
 BNA_F
 ClientSampleId :
 SB-04-5.0-7.0

Integration Parameters: rteint.p
 Integrator: RTE
 Smoothing : ON Filtering: 5
 Sampling : 1 Min Area: 3 % of largest Peak
 Start Thrs: 0.2 Max Peaks: 100
 Stop Thrs : 0 Peak Location: TOP

If leading or trailing edge < 100 prefer < Baseline drop else tangent >
 Peak separation: 5

Method : Z:\svoasrv\HPCHEM1\BNA_F\Methods\8270-BF060923.M
 Title : ASP BNA STANDARDS FOR 5 POINT CALIBRATION

77	14.333	2079	2082	2084	rVV2	216307	263204	2.19%	0.219%
78	14.362	2084	2087	2089	rVV2	364707	433624	3.60%	0.361%
79	14.404	2090	2094	2097	rVV	992517	1184917	9.84%	0.986%
80	14.433	2097	2099	2103	rVV2	547232	663254	5.51%	0.552%
81	14.498	2103	2110	2112	rVV4	394860	884190	7.35%	0.736%
82	14.527	2112	2115	2117	rVV	536327	592582	4.92%	0.493%
83	14.551	2117	2119	2122	rVV2	496284	489031	4.06%	0.407%
84	14.598	2122	2127	2133	rVB4	312181	546556	4.54%	0.455%
85	14.715	2144	2147	2149	rBV2	277295	268359	2.23%	0.223%
86	14.898	2174	2178	2182	rBV2	287885	387812	3.22%	0.323%
87	15.074	2200	2208	2211	rBV	2443438	4836669	40.18%	4.026%
88	15.098	2211	2212	2214	rVV	1743300	931951	7.74%	0.776%
89	15.133	2214	2218	2221	rVV3	169744	290530	2.41%	0.242%
90	15.168	2221	2224	2227	rVB	573965	579665	4.82%	0.482%
91	15.257	2235	2239	2240	rBV3	158365	211300	1.76%	0.176%
92	15.374	2253	2259	2264	rVB	1392700	2150103	17.86%	1.790%
93	15.445	2264	2271	2274	rVB	2155108	3038636	25.24%	2.529%
94	15.492	2275	2279	2281	rVV	246192	355285	2.95%	0.296%
95	15.527	2281	2285	2290	rVB2	767661	1043997	8.67%	0.869%
96	16.980	2523	2532	2537	rVB2	916978	2093343	17.39%	1.742%
97	17.139	2554	2559	2563	rBV	180826	307479	2.55%	0.256%
98	17.198	2564	2569	2574	rBV2	199324	335076	2.78%	0.279%
99	17.427	2599	2608	2616	rVB	700002	1700186	14.12%	1.415%
100	17.645	2640	2645	2659	rVB2	236421	575221	4.78%	0.479%

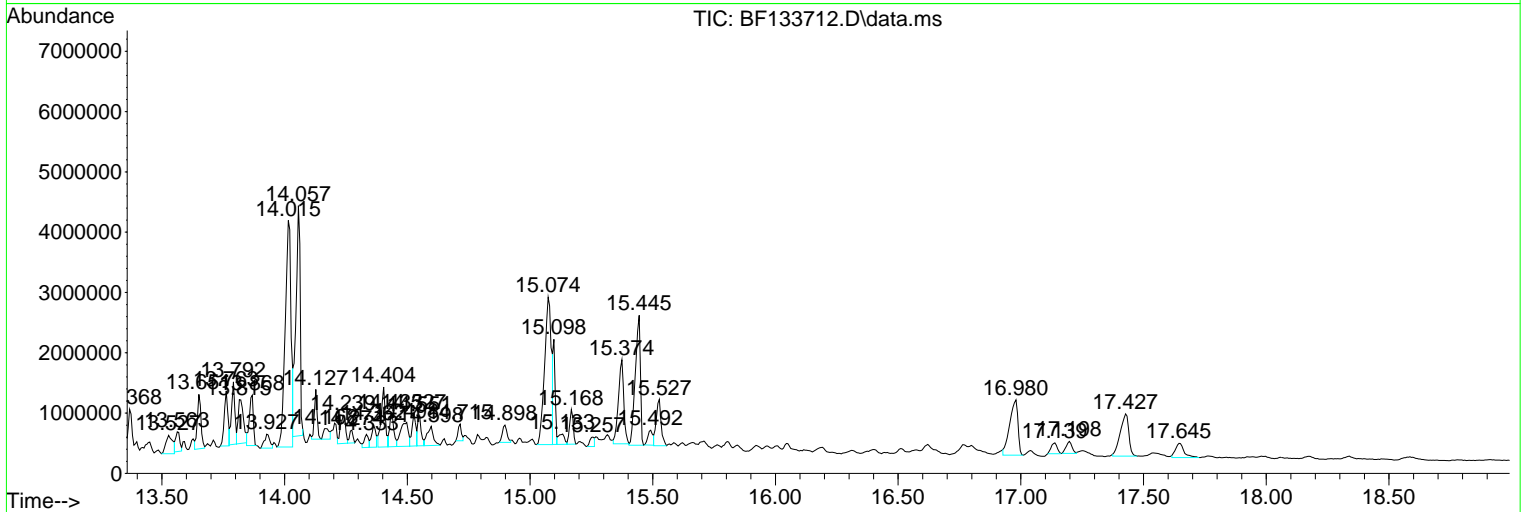
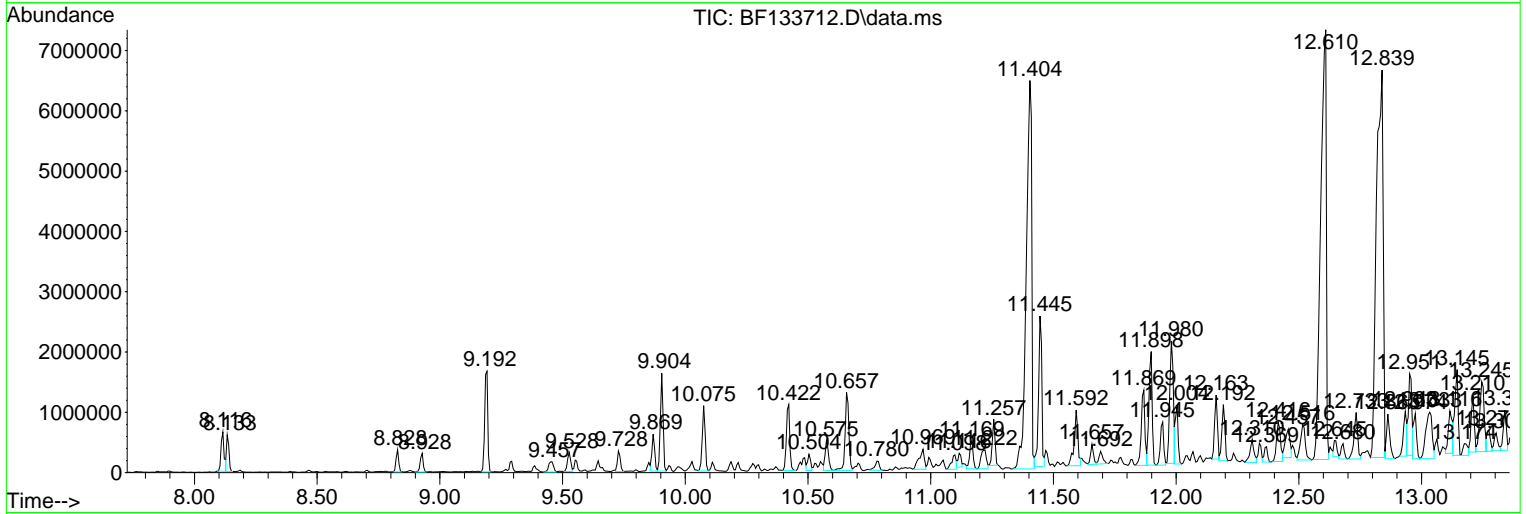
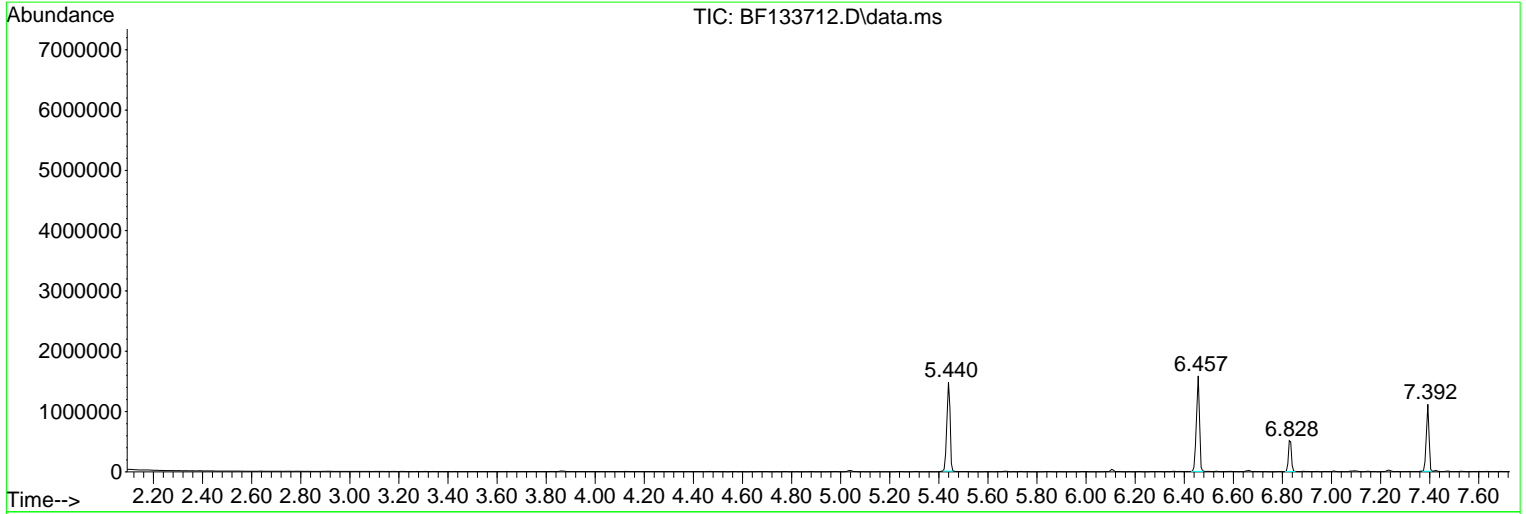
Sum of corrected areas: 120143789

Data Path : Z:\svoasrv\HPCHEM1\BNA_F\Data\BF061223\
 Data File : BF133712.D
 Acq On : 12 Jun 2023 19:36
 Operator : CG\JU
 Sample : 03044-09
 Misc :
 ALS Vial : 13 Sample Multiplier: 1

Instrument :
 BNA_F
 ClientSampleId :
 SB-04-5.0-7.0

Quant Method : Z:\svoasrv\HPCHEM1\BNA_F\Methods\8270-BF060923.M
 Quant Title : ASP BNA STANDARDS FOR 5 POINT CALIBRATION

TIC Library : C:\Database\NIST20.L
 TIC Integration Parameters: LSCINT.P



Data Path : Z:\svoasrv\HPCHEM1\BNA_F\Data\BF061223\
 Data File : BF133712.D
 Acq On : 12 Jun 2023 19:36
 Operator : CG\JU
 Sample : 03044-09
 Misc :
 ALS Vial : 13 Sample Multiplier: 1

Instrument :
 BNA_F
 ClientSampleId :
 SB-04-5.0-7.0

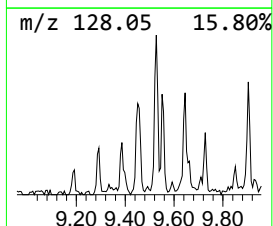
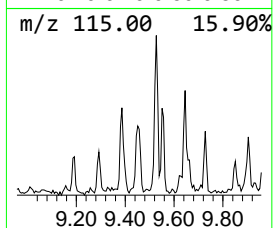
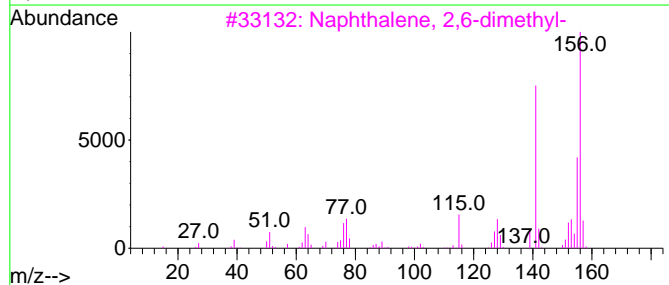
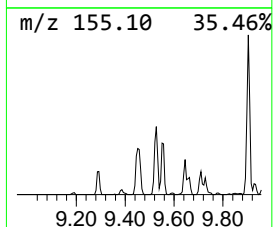
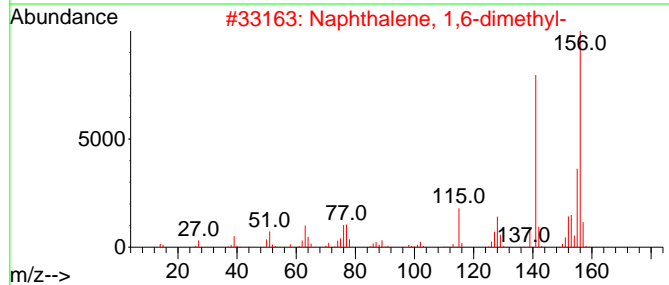
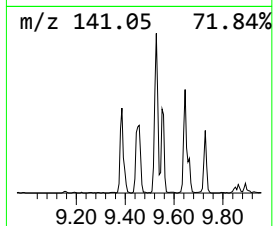
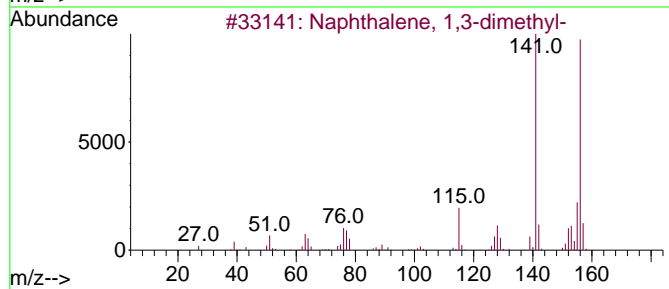
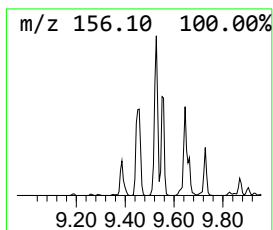
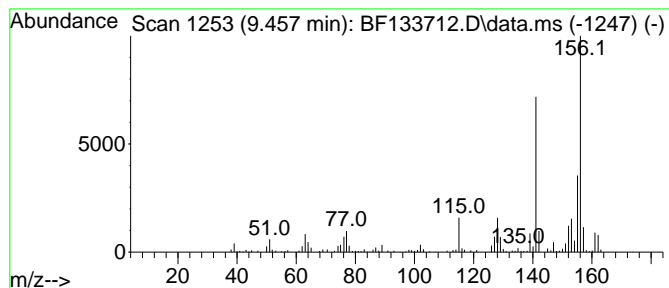
Quant Method : Z:\svoasrv\HPCHEM1\BNA_F\Methods\8270-BF060923.M
 Quant Title : ASP BNA STANDARDS FOR 5 POINT CALIBRATION

TIC Library : C:\Database\NIST20.L
 TIC Integration Parameters: LSCINT.P

 Peak Number 1 Naphthalene, 1,3-dimethyl- Concentration Rank 10

R.T.	EstConc	Area	Relative to ISTD	R.T.
9.457	10.04 ng	238373	Acenaphthene-d10	9.869

Hit#	of	5	Tentative ID	MW	MolForm	CAS#	Qual
1			Naphthalene, 1,3-dimethyl-	156	C12H12	000575-41-7	96
2			Naphthalene, 1,6-dimethyl-	156	C12H12	000575-43-9	96
3			Naphthalene, 2,6-dimethyl-	156	C12H12	000581-42-0	96
4			Naphthalene, 2,7-dimethyl-	156	C12H12	000582-16-1	96
5			Naphthalene, 1,4-dimethyl-	156	C12H12	000571-58-4	95



Data Path : Z:\svoasrv\HPCHEM1\BNA_F\Data\BF061223\
 Data File : BF133712.D
 Acq On : 12 Jun 2023 19:36
 Operator : CG\JU
 Sample : 03044-09
 Misc :
 ALS Vial : 13 Sample Multiplier: 1

Instrument :
 BNA_F
 ClientSampleId :
 SB-04-5.0-7.0

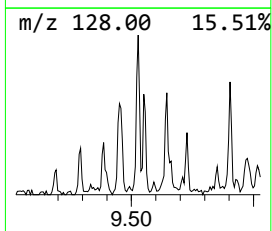
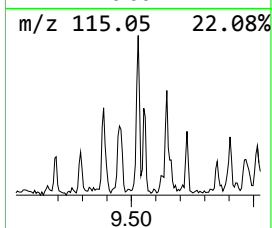
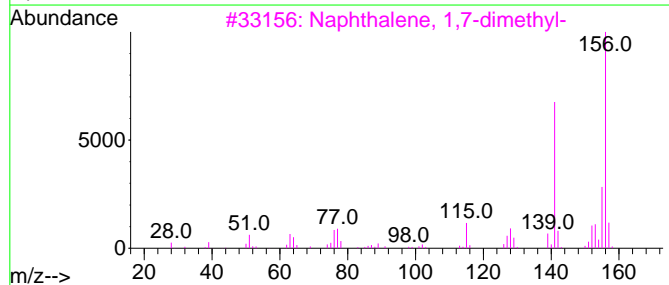
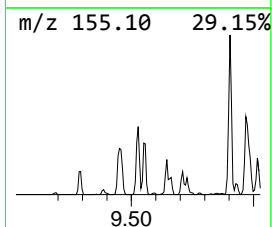
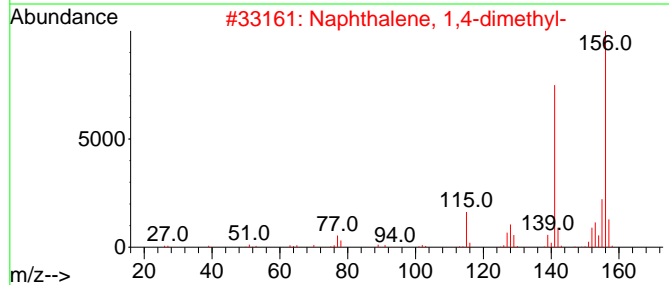
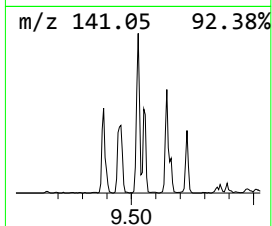
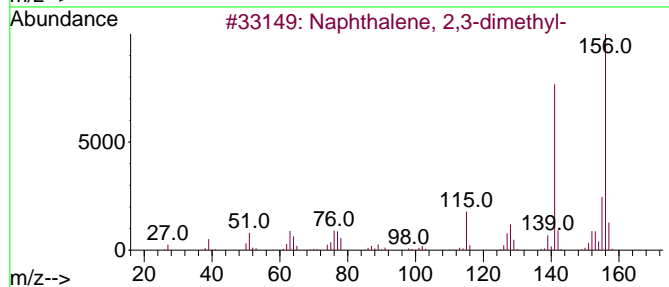
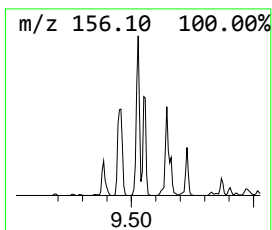
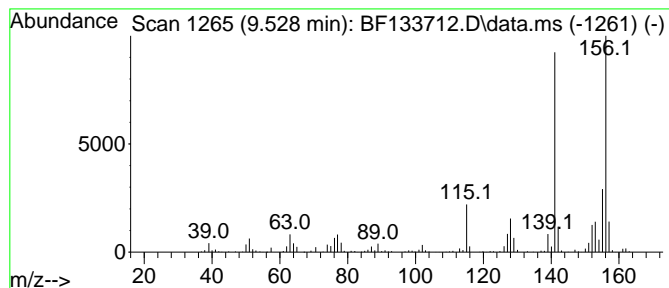
Quant Method : Z:\svoasrv\HPCHEM1\BNA_F\Methods\8270-BF060923.M
 Quant Title : ASP BNA STANDARDS FOR 5 POINT CALIBRATION

TIC Library : C:\Database\NIST20.L
 TIC Integration Parameters: LSCINT.P

 Peak Number 2 Naphthalene, 2,3-dimethyl- Concentration Rank 8

R.T.	EstConc	Area	Relative to ISTD	R.T.
9.528	12.11 ng	287660	Acenaphthene-d10	9.869

Hit#	of	5	Tentative ID	MW	MolForm	CAS#	Qual
1			Naphthalene, 2,3-dimethyl-	156	C12H12	000581-40-8	97
2			Naphthalene, 1,4-dimethyl-	156	C12H12	000571-58-4	97
3			Naphthalene, 1,7-dimethyl-	156	C12H12	000575-37-1	97
4			Naphthalene, 1,2-dimethyl-	156	C12H12	000573-98-8	97
5			Naphthalene, 1,6-dimethyl-	156	C12H12	000575-43-9	96



Data Path : Z:\svoasrv\HPCHEM1\BNA_F\Data\BF061223\
 Data File : BF133712.D
 Acq On : 12 Jun 2023 19:36
 Operator : CG\JU
 Sample : 03044-09
 Misc :
 ALS Vial : 13 Sample Multiplier: 1

Instrument :
 BNA_F
 ClientSampleId :
 SB-04-5.0-7.0

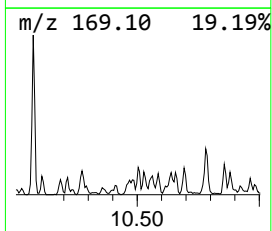
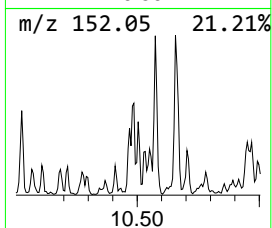
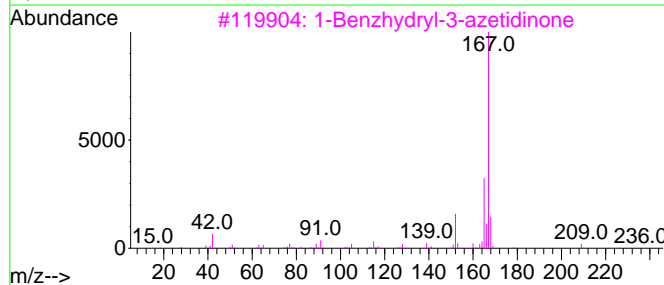
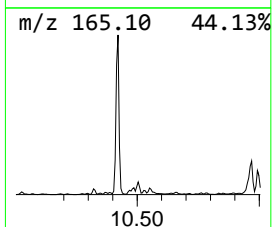
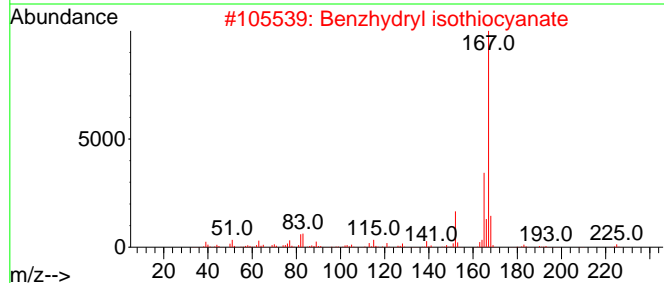
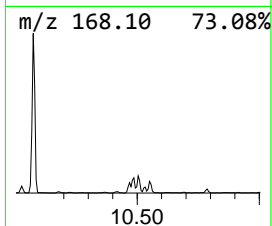
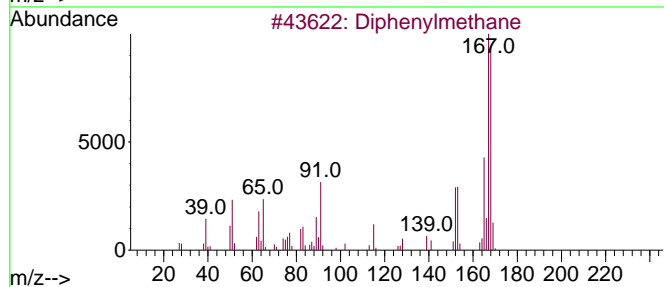
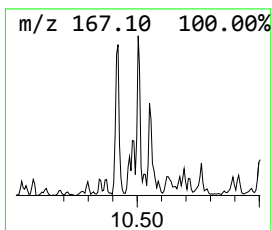
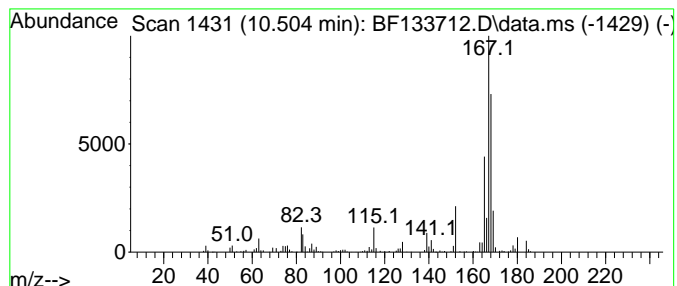
Quant Method : Z:\svoasrv\HPCHEM1\BNA_F\Methods\8270-BF060923.M
 Quant Title : ASP BNA STANDARDS FOR 5 POINT CALIBRATION

TIC Library : C:\Database\NIST20.L
 TIC Integration Parameters: LSCINT.P

 Peak Number 3 Diphenylmethane Concentration Rank 11

R.T.	EstConc	Area	Relative to ISTD	R.T.
10.504	9.43 ng	223960	Acenaphthene-d10	9.869

Hit#	of 5	Tentative ID	MW	MolForm	CAS#	Qual
1		Diphenylmethane	168	C13H12	000101-81-5	76
2		Benzhydryl isothiocyanate	225	C14H11NS	003550-21-8	58
3		1-Benzhydryl-3-azetidinone	237	C16H15NO	040320-60-3	53
4		Adrafinil	289	C15H15NO3S	063547-13-7	53
5		Diphenylmethoxy acetic acid	242	C15H14O3	021409-25-6	53



Data Path : Z:\svoasrv\HPCHEM1\BNA_F\Data\BF061223\
 Data File : BF133712.D
 Acq On : 12 Jun 2023 19:36
 Operator : CG\JU
 Sample : 03044-09
 Misc :
 ALS Vial : 13 Sample Multiplier: 1

Instrument :
 BNA_F
 ClientSampleId :
 SB-04-5.0-7.0

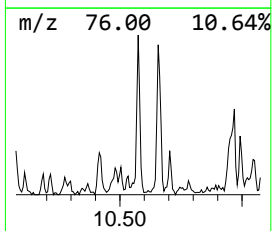
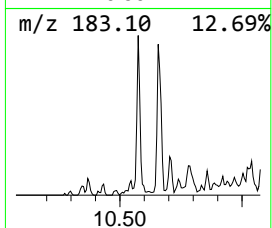
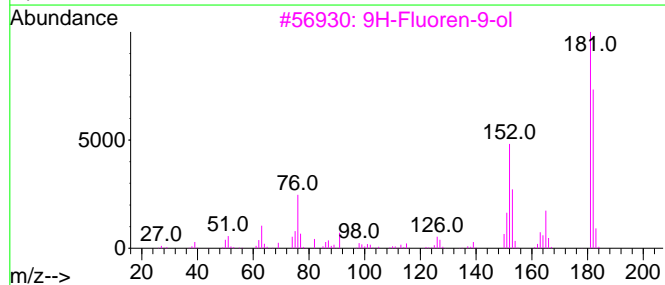
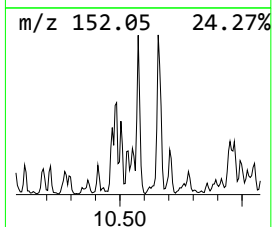
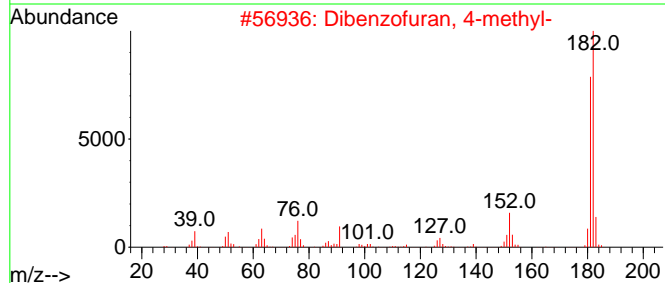
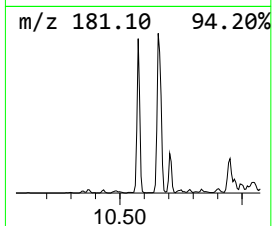
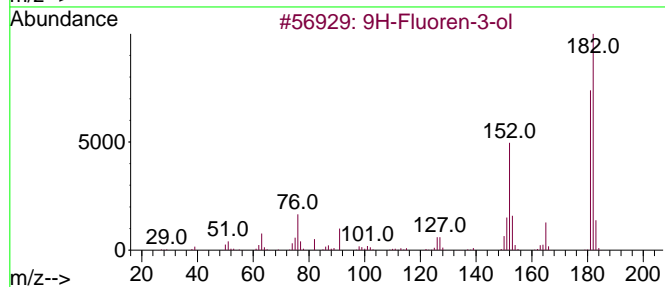
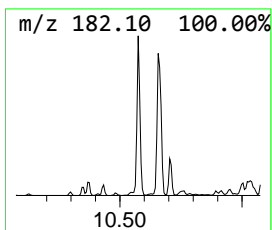
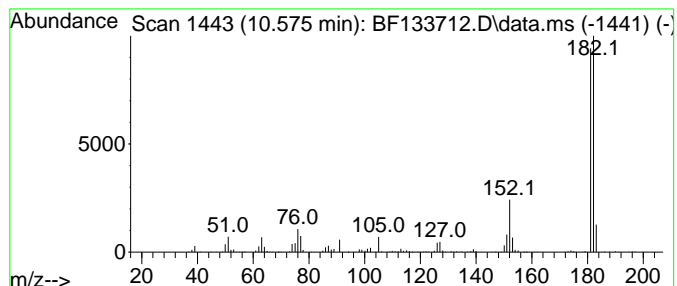
Quant Method : Z:\svoasrv\HPCHEM1\BNA_F\Methods\8270-BF060923.M
 Quant Title : ASP BNA STANDARDS FOR 5 POINT CALIBRATION

TIC Library : C:\Database\NIST20.L
 TIC Integration Parameters: LSCINT.P

 Peak Number 4 9H-Fluoren-3-ol Concentration Rank 5

R.T.	EstConc	Area	Relative to ISTD	R.T.
10.575	19.34 ng	459416	Acenaphthene-d10	9.869

Hit#	of 5	Tentative ID	MW	MolForm	CAS#	Qual
1		9H-Fluoren-3-ol	182	C13H10O	006344-67-8	91
2		Dibenzofuran, 4-methyl-	182	C13H10O	007320-53-8	90
3		9H-Fluoren-9-ol	182	C13H10O	001689-64-1	86
4		[1,1'-Biphenyl]-4-carboxaldehyde	182	C13H10O	003218-36-8	86
5		2,4,6-Cycloheptatrien-1-one, 2-p...	182	C13H10O	014562-09-5	78



Data Path : Z:\svoasrv\HPCHEM1\BNA_F\Data\BF061223\
 Data File : BF133712.D
 Acq On : 12 Jun 2023 19:36
 Operator : CG\JU
 Sample : 03044-09
 Misc :
 ALS Vial : 13 Sample Multiplier: 1

Instrument :
 BNA_F
 ClientSampleId :
 SB-04-5.0-7.0

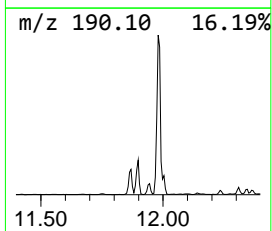
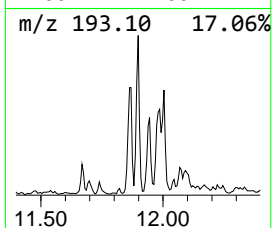
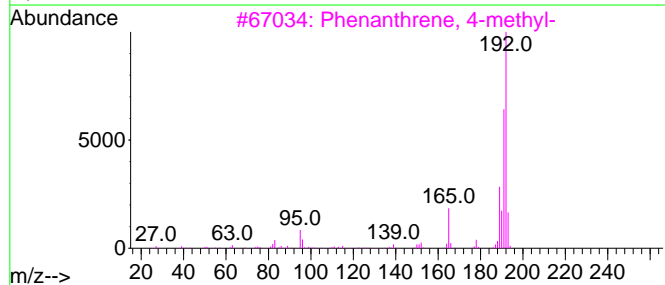
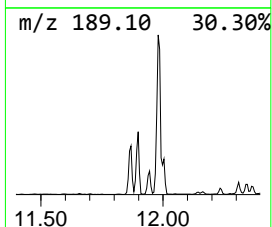
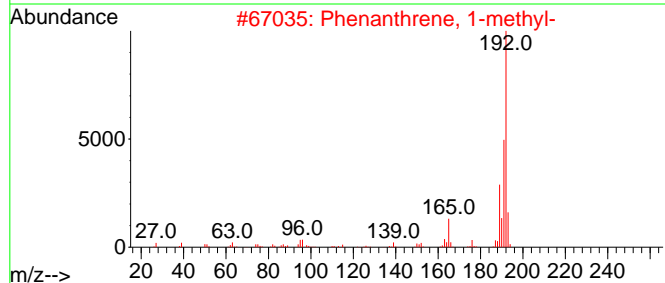
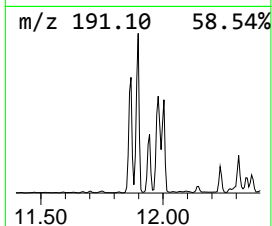
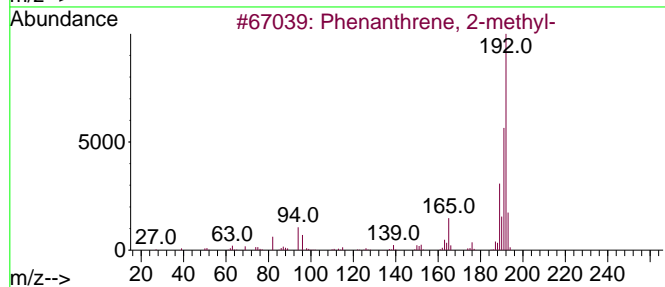
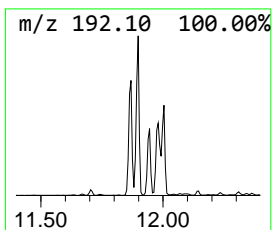
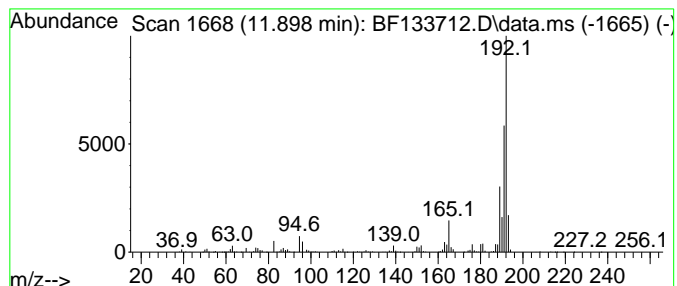
Quant Method : Z:\svoasrv\HPCHEM1\BNA_F\Methods\8270-BF060923.M
 Quant Title : ASP BNA STANDARDS FOR 5 POINT CALIBRATION

TIC Library : C:\Database\NIST20.L
 TIC Integration Parameters: LSCINT.P

 Peak Number 5 Phenanthrene, 2-methyl- Concentration Rank 18

R.T.	EstConc	Area	Relative to ISTD	R.T.
11.898	3.37 ng	1663820	Phenanthrene-d10	11.363

Hit#	of	5	Tentative ID	MW	MolForm	CAS#	Qual
1			Phenanthrene, 2-methyl-	192	C15H12	002531-84-2	97
2			Phenanthrene, 1-methyl-	192	C15H12	000832-69-9	97
3			Phenanthrene, 4-methyl-	192	C15H12	000832-64-4	95
4			Anthracene, 1-methyl-	192	C15H12	000610-48-0	95
5			1H-Cyclopropa[1]phenanthrene,1a,...	192	C15H12	000949-41-7	94



Data Path : Z:\svoasrv\HPCHEM1\BNA_F\Data\BF061223\
 Data File : BF133712.D
 Acq On : 12 Jun 2023 19:36
 Operator : CG\JU
 Sample : 03044-09
 Misc :
 ALS Vial : 13 Sample Multiplier: 1

Instrument :
 BNA_F
 ClientSampleId :
 SB-04-5.0-7.0

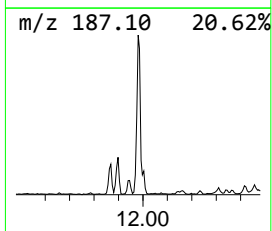
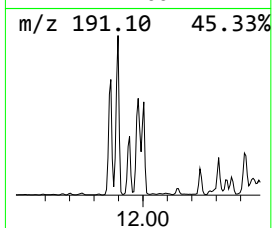
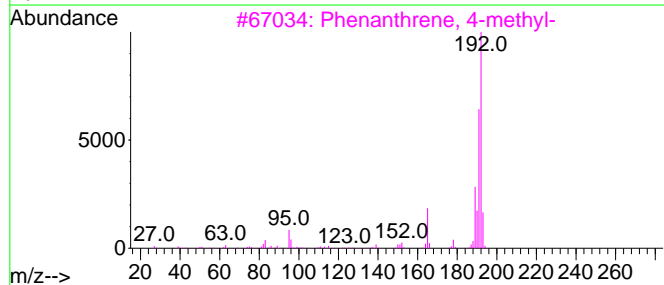
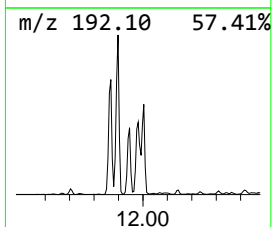
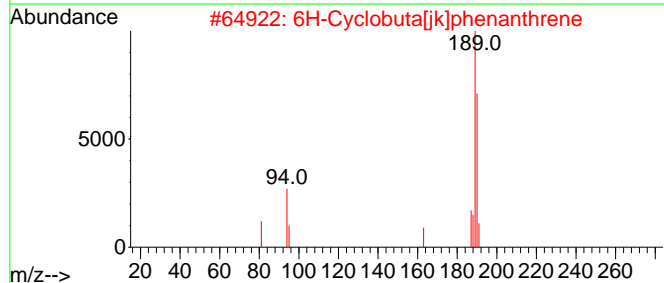
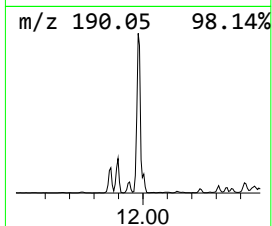
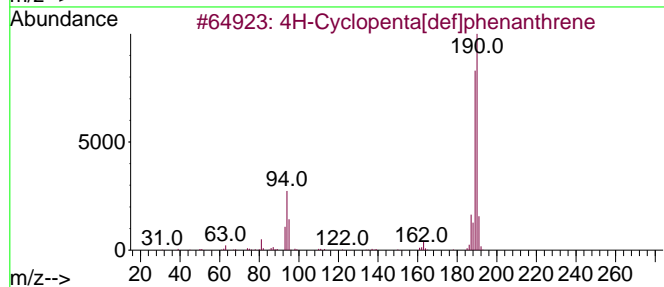
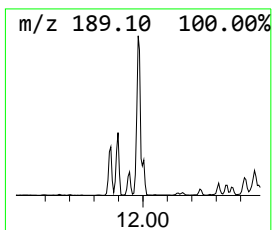
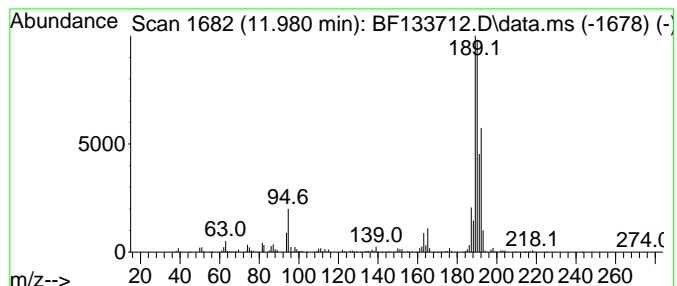
Quant Method : Z:\svoasrv\HPCHEM1\BNA_F\Methods\8270-BF060923.M
 Quant Title : ASP BNA STANDARDS FOR 5 POINT CALIBRATION

TIC Library : C:\Database\NIST20.L
 TIC Integration Parameters: LSCINT.P

 Peak Number 6 4H-Cyclopenta[def]phenanthrene Concentration Rank 14

R.T.	EstConc	Area	Relative to ISTD	R.T.
11.980	4.24 ng	2092870	Phenanthrene-d10	11.363

Hit#	of 5	Tentative ID	MW	MolForm	CAS#	Qual
1		4H-Cyclopenta[def]phenanthrene	190	C15H10	000203-64-5	70
2		6H-Cyclobuta[jk]phenanthrene	190	C15H10	083469-43-6	58
3		Phenanthrene, 4-methyl-	192	C15H12	000832-64-4	35
4		Phenanthrene, 1-methyl-	192	C15H12	000832-69-9	25
5		1H-Indene, 2-phenyl-	192	C15H12	004505-48-0	25



Data Path : Z:\svoasrv\HPCHEM1\BNA_F\Data\BF061223\
 Data File : BF133712.D
 Acq On : 12 Jun 2023 19:36
 Operator : CG\JU
 Sample : 03044-09
 Misc :
 ALS Vial : 13 Sample Multiplier: 1

Instrument :
 BNA_F
 ClientSampleId :
 SB-04-5.0-7.0

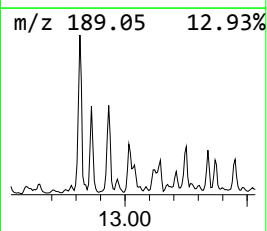
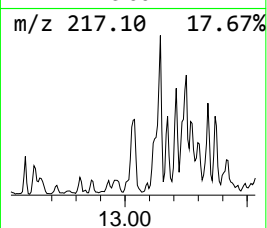
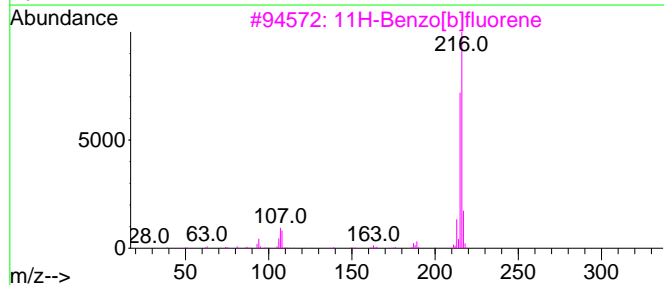
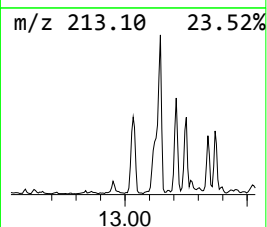
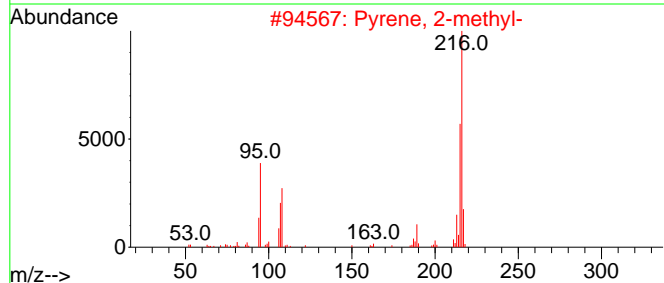
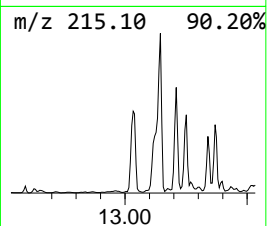
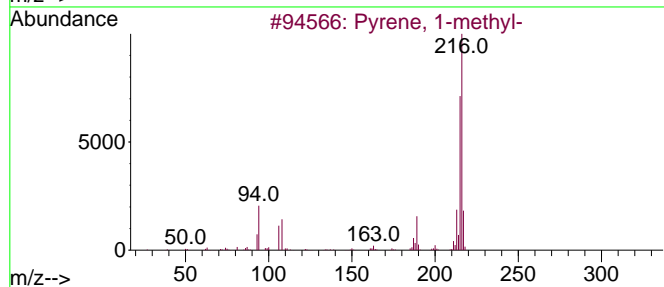
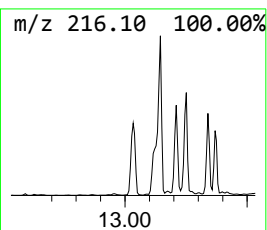
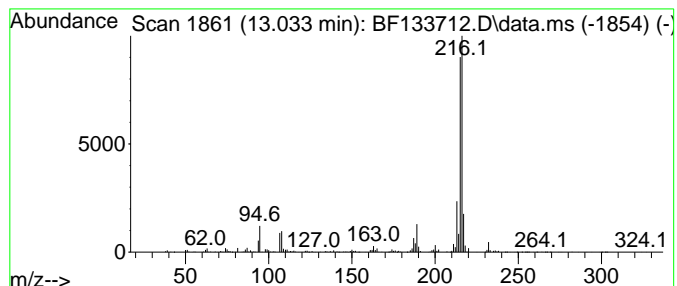
Quant Method : Z:\svoasrv\HPCHEM1\BNA_F\Methods\8270-BF060923.M
 Quant Title : ASP BNA STANDARDS FOR 5 POINT CALIBRATION

TIC Library : C:\Database\NIST20.L
 TIC Integration Parameters: LSCINT.P

 Peak Number 7 Pyrene, 1-methyl- Concentration Rank 13

R.T.	EstConc	Area	Relative to ISTD	R.T.
13.033	4.42 ng	1402600	Chrysene-d12	14.027

Hit#	of	5	Tentative ID	MW	MolForm	CAS#	Qual
1			Pyrene, 1-methyl-	216	C17H12	002381-21-7	97
2			Pyrene, 2-methyl-	216	C17H12	003442-78-2	93
3			11H-Benzo[b]fluorene	216	C17H12	000243-17-4	93
4			Fluoranthene, 2-methyl-	216	C17H12	033543-31-6	90
5			11H-Benzo[a]fluorene	216	C17H12	000238-84-6	87



Data Path : Z:\svoasrv\HPCHEM1\BNA_F\Data\BF061223\
 Data File : BF133712.D
 Acq On : 12 Jun 2023 19:36
 Operator : CG\JU
 Sample : 03044-09
 Misc :
 ALS Vial : 13 Sample Multiplier: 1

Instrument :
 BNA_F
 ClientSampleId :
 SB-04-5.0-7.0

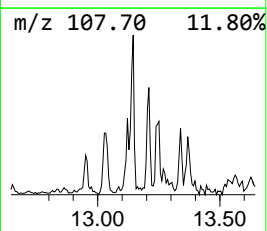
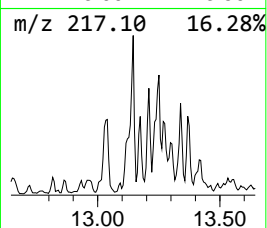
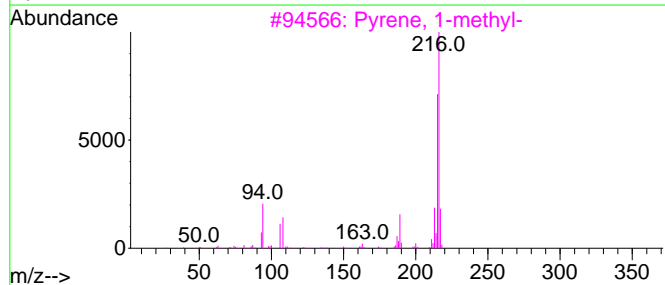
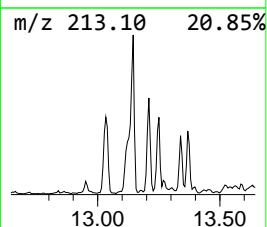
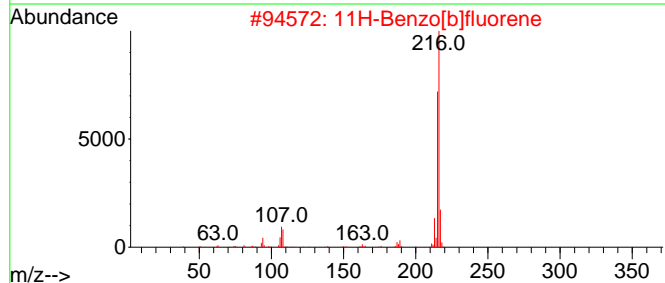
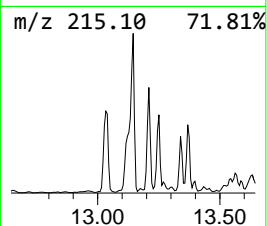
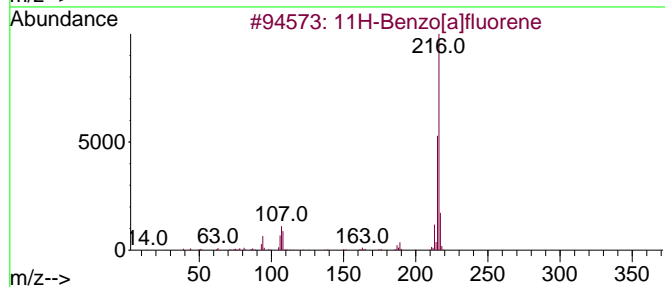
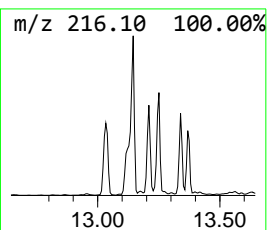
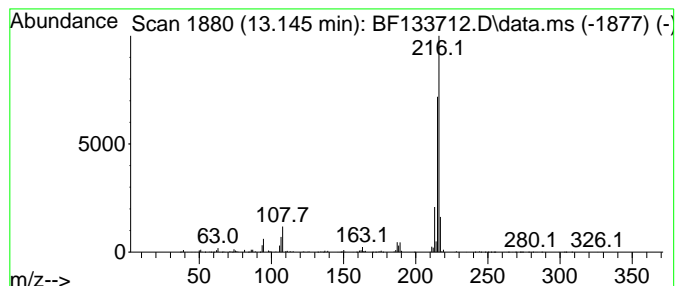
Quant Method : Z:\svoasrv\HPCHEM1\BNA_F\Methods\8270-BF060923.M
 Quant Title : ASP BNA STANDARDS FOR 5 POINT CALIBRATION

TIC Library : C:\Database\NIST20.L
 TIC Integration Parameters: LSCINT.P

 Peak Number 8 11H-Benzo[a]fluorene Concentration Rank 15

R.T.	EstConc	Area	Relative to ISTD	R.T.
13.145	4.10 ng	1298380	Chrysene-d12	14.027

Hit#	of	5	Tentative ID	MW	MolForm	CAS#	Qual
1			11H-Benzo[a]fluorene	216	C17H12	000238-84-6	94
2			11H-Benzo[b]fluorene	216	C17H12	000243-17-4	93
3			Pyrene, 1-methyl-	216	C17H12	002381-21-7	91
4			Fluoranthene, 2-methyl-	216	C17H12	033543-31-6	81
5			Pyrene, 2-methyl-	216	C17H12	003442-78-2	72



Data Path : Z:\svoasrv\HPCHEM1\BNA_F\Data\BF061223\
 Data File : BF133712.D
 Acq On : 12 Jun 2023 19:36
 Operator : CG\JU
 Sample : 03044-09
 Misc :
 ALS Vial : 13 Sample Multiplier: 1

Instrument :
 BNA_F
 ClientSampleId :
 SB-04-5.0-7.0

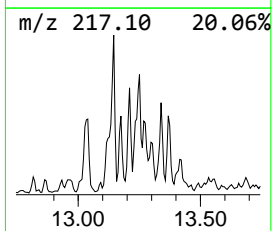
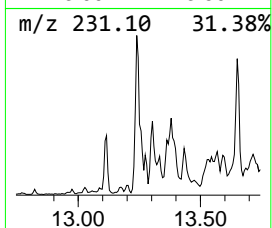
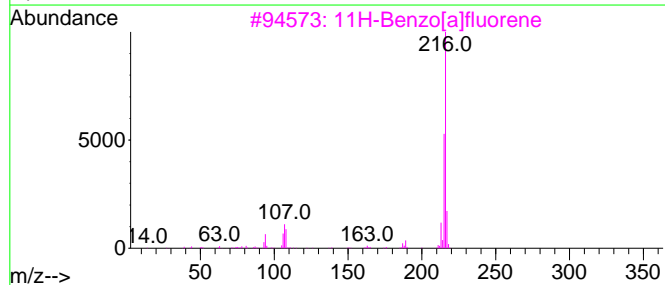
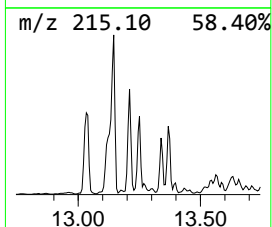
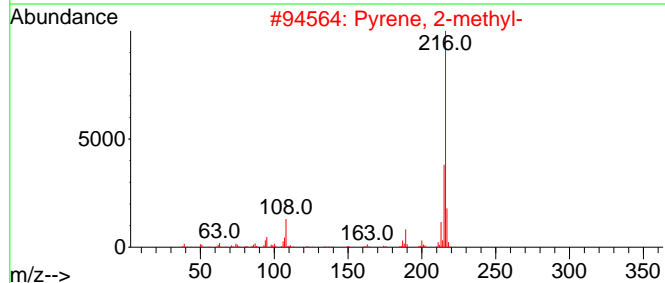
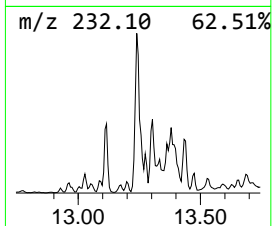
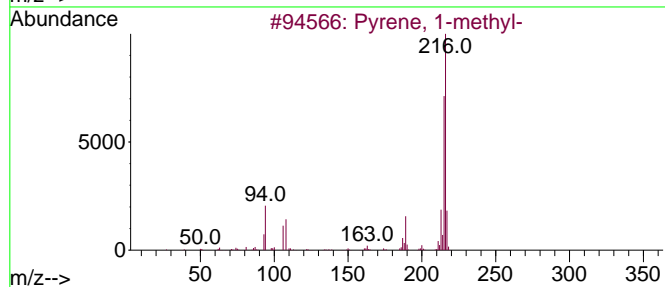
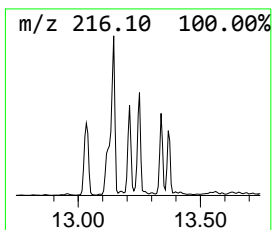
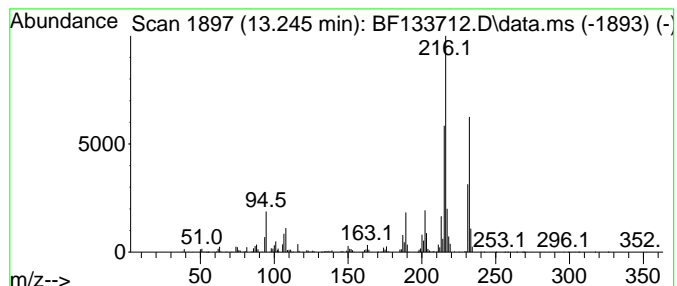
Quant Method : Z:\svoasrv\HPCHEM1\BNA_F\Methods\8270-BF060923.M
 Quant Title : ASP BNA STANDARDS FOR 5 POINT CALIBRATION

TIC Library : C:\Database\NIST20.L
 TIC Integration Parameters: LSCINT.P

 Peak Number 9 Pyrene, 2-methyl- Concentration Rank 12

R.T.	EstConc	Area	Relative to ISTD	R.T.
13.245	4.66 ng	1477410	Chrysene-d12	14.027

Hit#	of	5	Tentative ID	MW	MolForm	CAS#	Qual
1			Pyrene, 1-methyl-	216	C17H12	002381-21-7	95
2			Pyrene, 2-methyl-	216	C17H12	003442-78-2	90
3			11H-Benzo[a]fluorene	216	C17H12	000238-84-6	60
4			Fluoranthene, 2-methyl-	216	C17H12	033543-31-6	60
5			Pyrene, 4-methyl-	216	C17H12	003353-12-6	50



Data Path : Z:\svoasrv\HPCHEM1\BNA_F\Data\BF061223\
 Data File : BF133712.D
 Acq On : 12 Jun 2023 19:36
 Operator : CG\JU
 Sample : 03044-09
 Misc :
 ALS Vial : 13 Sample Multiplier: 1

Instrument :
 BNA_F
 ClientSampleId :
 SB-04-5.0-7.0

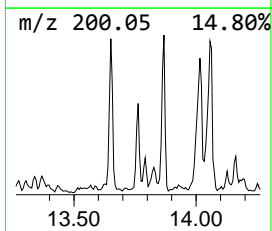
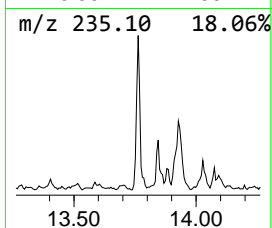
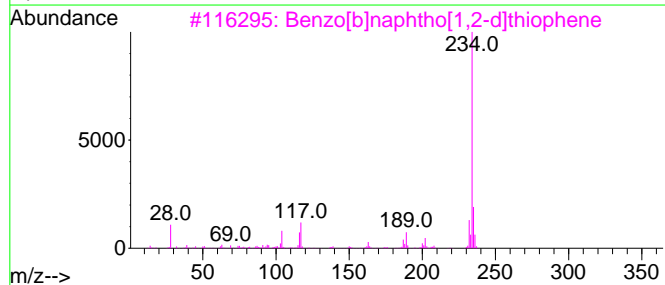
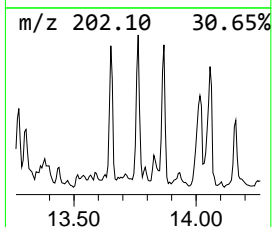
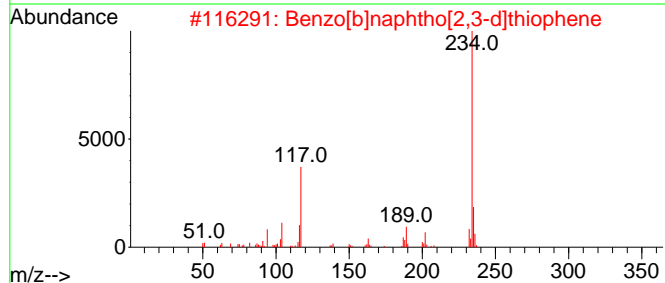
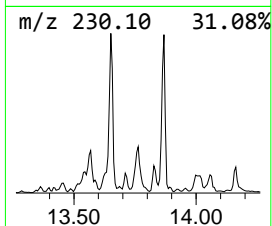
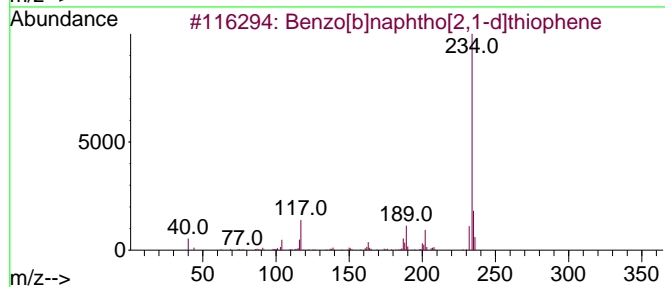
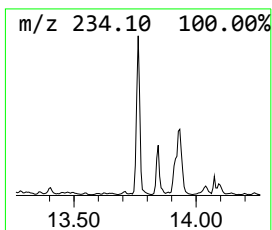
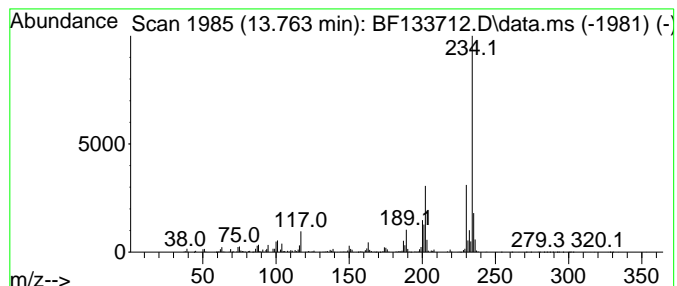
Quant Method : Z:\svoasrv\HPCHEM1\BNA_F\Methods\8270-BF060923.M
 Quant Title : ASP BNA STANDARDS FOR 5 POINT CALIBRATION

TIC Library : C:\Database\NIST20.L
 TIC Integration Parameters: LSCINT.P

 Peak Number 10 Benzo[b]naphtho[2,1-d]thiop... Concentration Rank 20

R.T.	EstConc	Area	Relative to ISTD	R.T.
13.762	3.04 ng	965251	Chrysene-d12	14.027

Hit#	of	5	Tentative ID	MW	MolForm	CAS#	Qual
1			Benzo[b]naphtho[2,1-d]thiophene	234	C16H10S	000239-35-0	78
2			Benzo[b]naphtho[2,3-d]thiophene	234	C16H10S	000243-46-9	70
3			Benzo[b]naphtho[1,2-d]thiophene	234	C16H10S	000205-43-6	64
4			pyrido[1',2':1,2]imidazo[4,5-b]q...	234	C14H10N4	1000401-06-3	43
5			2-(5-Amino-2-chloro-4-cyano-2-et...	234	C10H7ClN4O	1000436-11-9	43



Data Path : Z:\svoasrv\HPCHEM1\BNA_F\Data\BF061223\
 Data File : BF133712.D
 Acq On : 12 Jun 2023 19:36
 Operator : CG\JU
 Sample : 03044-09
 Misc :
 ALS Vial : 13 Sample Multiplier: 1

Instrument :
 BNA_F
 ClientSampleId :
 SB-04-5.0-7.0

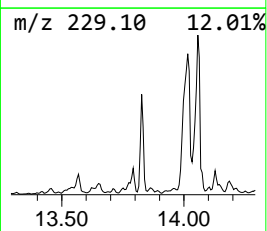
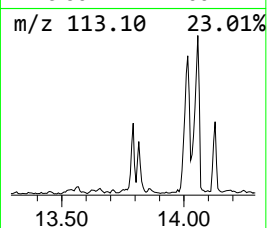
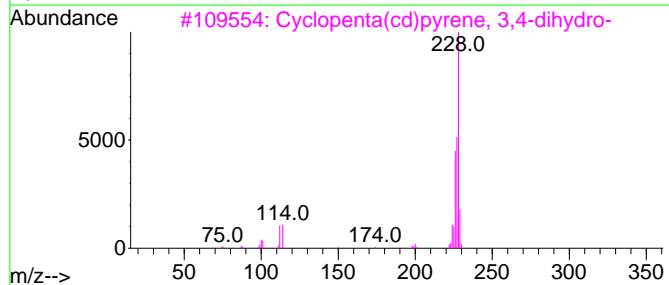
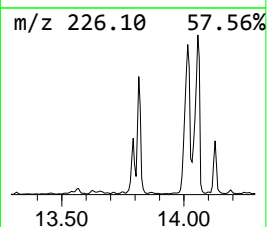
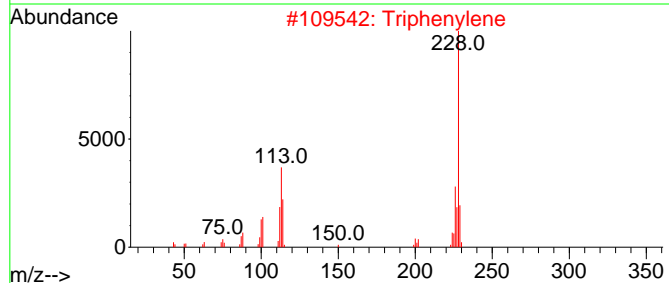
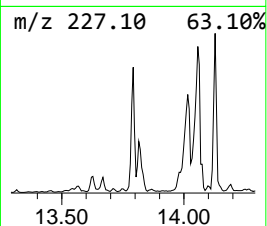
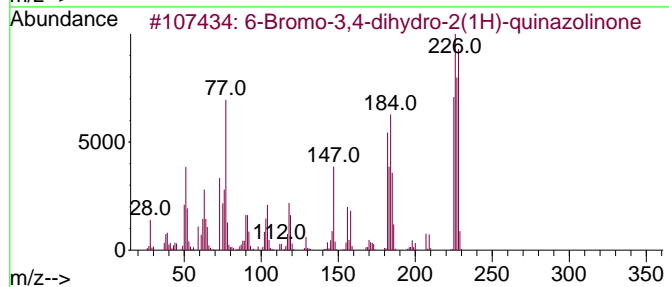
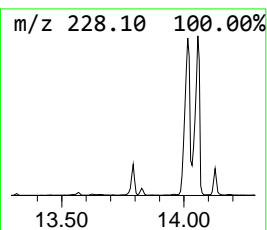
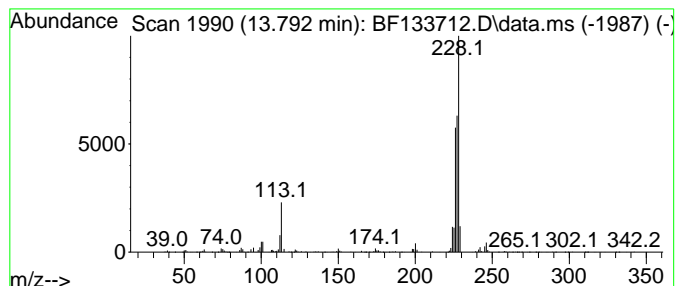
Quant Method : Z:\svoasrv\HPCHEM1\BNA_F\Methods\8270-BF060923.M
 Quant Title : ASP BNA STANDARDS FOR 5 POINT CALIBRATION

TIC Library : C:\Database\NIST20.L
 TIC Integration Parameters: LSCINT.P

 Peak Number 11 6-Bromo-3,4-dihydro-2(1H)-q... Concentration Rank 19

R.T.	EstConc	Area	Relative to ISTD	R.T.
13.792	3.09 ng	978489	Chrysene-d12	14.027

Hit#	of	5	Tentative ID	MW	MolForm	CAS#	Qual
1			6-Bromo-3,4-dihydro-2(1H)-quinaz...	226	C8H7BrN2O	1246765-38-7	53
2			Triphenylene	228	C18H12	000217-59-4	49
3			Cyclopenta(cd)pyrene, 3,4-dihydro-	228	C18H12	025732-74-5	49
4			5-Phenylthieno[2,3-d]pyrimidin-4-ol	228	C12H8N2OS	035978-39-3	47
5			Pyrazole-4-carboxaldehyde-, 3,5-...	228	C14H16N2O	1000272-54-8	43



Data Path : Z:\svoasrv\HPCHEM1\BNA_F\Data\BF061223\
 Data File : BF133712.D
 Acq On : 12 Jun 2023 19:36
 Operator : CG\JU
 Sample : 03044-09
 Misc :
 ALS Vial : 13 Sample Multiplier: 1

Instrument :
 BNA_F
 ClientSampleId :
 SB-04-5.0-7.0

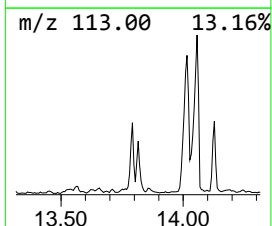
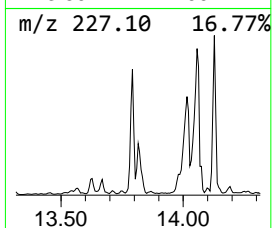
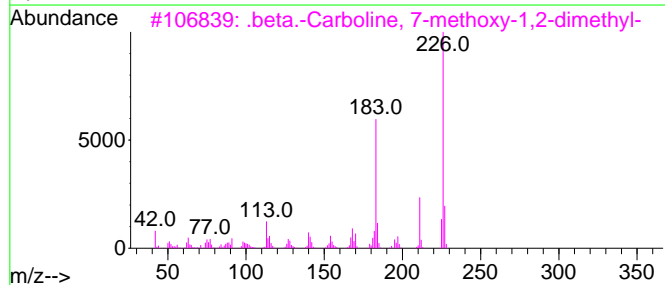
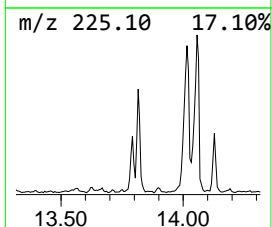
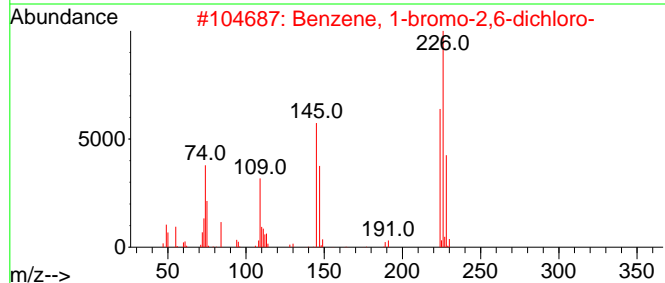
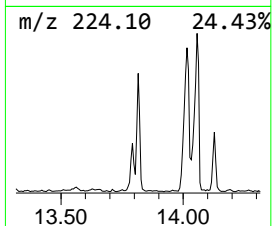
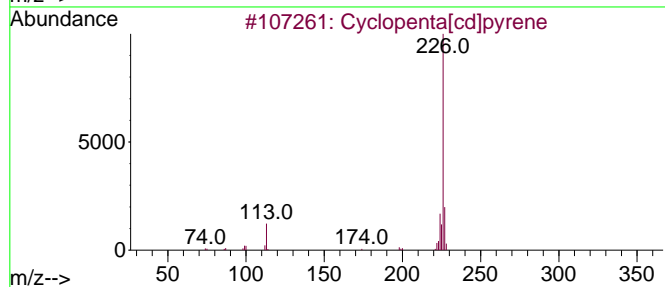
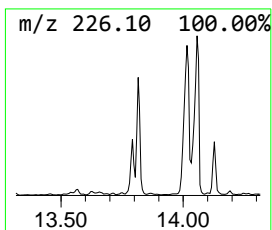
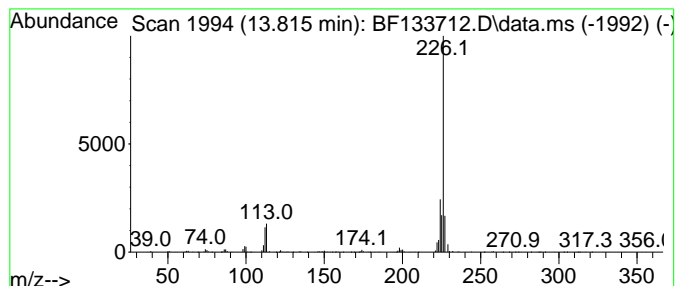
Quant Method : Z:\svoasrv\HPCHEM1\BNA_F\Methods\8270-BF060923.M
 Quant Title : ASP BNA STANDARDS FOR 5 POINT CALIBRATION

TIC Library : C:\Database\NIST20.L
 TIC Integration Parameters: LSCINT.P

 Peak Number 12 Cyclopenta[cd]pyrene Concentration Rank 17

R.T.	EstConc	Area	Relative to ISTD	R.T.
13.816	3.49 ng	1105050	Chrysene-d12	14.027

Hit#	of	5	Tentative ID	MW	MolForm	CAS#	Qual
1			Cyclopenta[cd]pyrene	226	C18H10	027208-37-3	86
2			Benzene, 1-bromo-2,6-dichloro-	224	C6H3BrCl2	019393-92-1	50
3			.beta.-Carboline, 7-methoxy-1,2-...	226	C14H14N2O	006519-18-2	42
4			4-Naphthalen-2-yl-thiazol-2-ylamine	226	C13H10N2S	1000300-53-4	42
5			2-Thiazolamine, 4-(1-naphthalenyl)-	226	C13H10N2S	056503-96-9	40



Data Path : Z:\svoasrv\HPCHEM1\BNA_F\Data\BF061223\
 Data File : BF133712.D
 Acq On : 12 Jun 2023 19:36
 Operator : CG\JU
 Sample : 03044-09
 Misc :
 ALS Vial : 13 Sample Multiplier: 1

Instrument :
 BNA_F
 ClientSampleId :
 SB-04-5.0-7.0

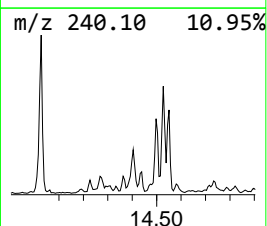
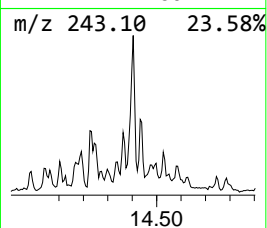
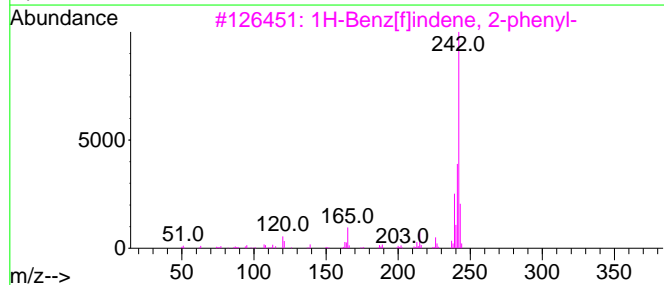
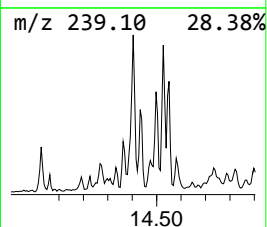
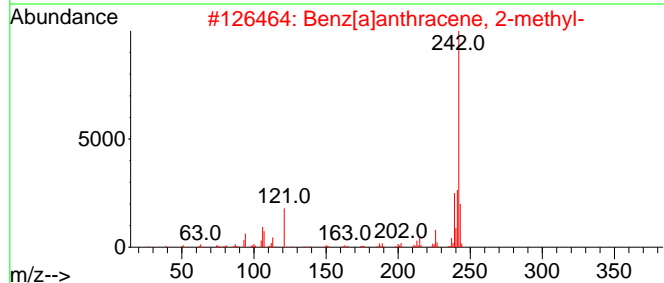
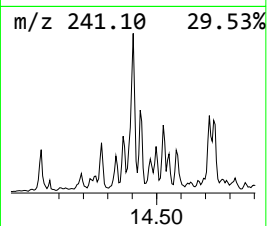
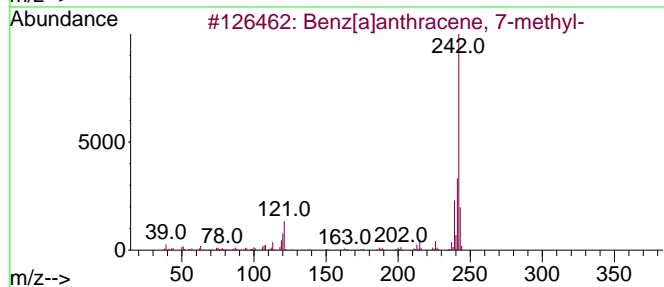
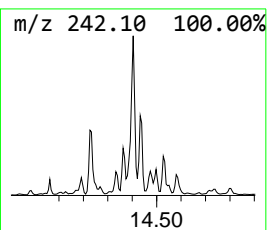
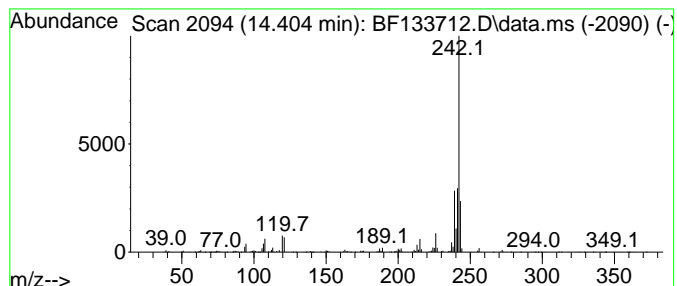
Quant Method : Z:\svoasrv\HPCHEM1\BNA_F\Methods\8270-BF060923.M
 Quant Title : ASP BNA STANDARDS FOR 5 POINT CALIBRATION

TIC Library : C:\Database\NIST20.L
 TIC Integration Parameters: LSCINT.P

 Peak Number 13 Benz[a]anthracene, 7-methyl- Concentration Rank 16

R.T.	EstConc	Area	Relative to ISTD	R.T.
14.404	3.74 ng	1184920	Chrysene-d12	14.027

Hit#	of	5	Tentative ID	MW	MolForm	CAS#	Qual
1			Benz[a]anthracene, 7-methyl-	242	C19H14	002541-69-7	97
2			Benz[a]anthracene, 2-methyl-	242	C19H14	002498-76-2	96
3			1H-Benz[f]indene, 2-phenyl-	242	C19H14	1000305-22-4	96
4			Benz[a]anthracene, 8-methyl-	242	C19H14	002381-31-9	95
5			Chrysene, 3-methyl-	242	C19H14	003351-31-3	95



Data Path : Z:\svoasrv\HPCHEM1\BNA_F\Data\BF061223\
 Data File : BF133712.D
 Acq On : 12 Jun 2023 19:36
 Operator : CG\JU
 Sample : 03044-09
 Misc :
 ALS Vial : 13 Sample Multiplier: 1

Instrument :
 BNA_F
 ClientSampleId :
 SB-04-5.0-7.0

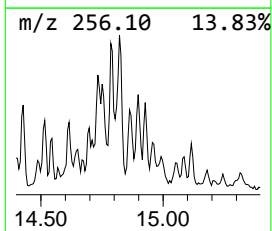
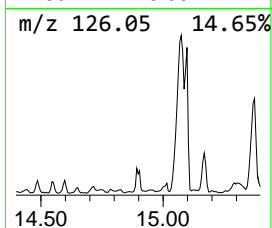
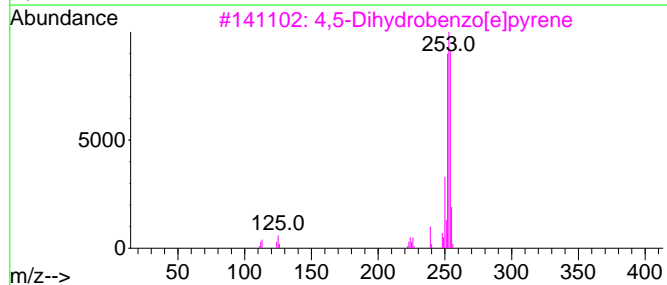
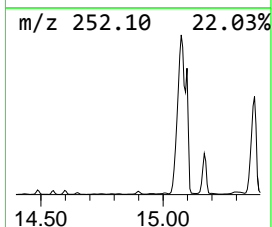
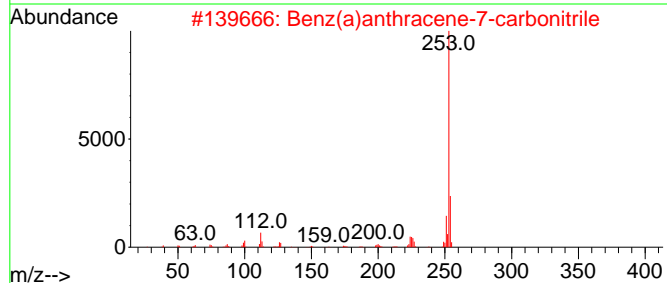
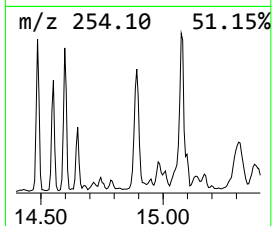
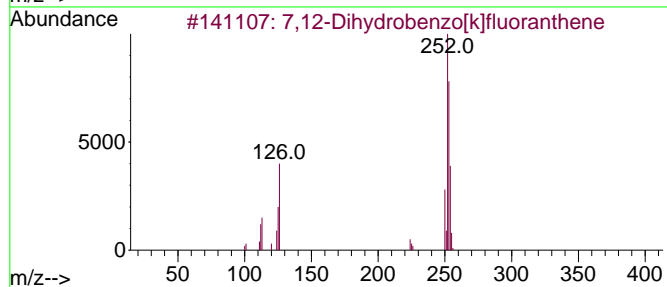
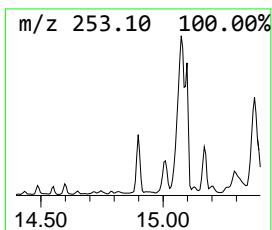
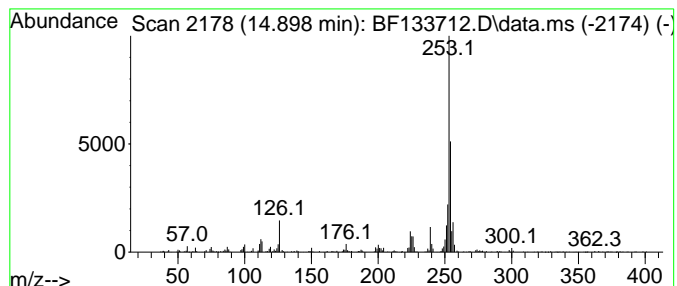
Quant Method : Z:\svoasrv\HPCHEM1\BNA_F\Methods\8270-BF060923.M
 Quant Title : ASP BNA STANDARDS FOR 5 POINT CALIBRATION

TIC Library : C:\Database\NIST20.L
 TIC Integration Parameters: LSCINT.P

 Peak Number 14 7,12-Dihydrobenzo[k]fluoran... Concentration Rank 4

R.T.	EstConc	Area	Relative to ISTD	R.T.
14.898	21.83 ng	387812	Perylene-d12	15.492

Hit#	of 5	Tentative ID	MW	MolForm	CAS#	Qual
1		7,12-Dihydrobenzo[k]fluoranthene	254	C20H14	1000080-17-7	64
2		Benz(a)anthracene-7-carbonitrile	253	C19H11N	007476-08-6	49
3		4,5-Dihydrobenzo[e]pyrene	254	C20H14	095676-42-9	46
4		1,1'-Binaphthalene	254	C20H14	000604-53-5	46
5		9H-Fluorene, 9-(phenylmethylene)-	254	C20H14	001836-87-9	43



Data Path : Z:\svoasrv\HPCHEM1\BNA_F\Data\BF061223\
 Data File : BF133712.D
 Acq On : 12 Jun 2023 19:36
 Operator : CG\JU
 Sample : 03044-09
 Misc :
 ALS Vial : 13 Sample Multiplier: 1

Instrument :
 BNA_F
 ClientSampleId :
 SB-04-5.0-7.0

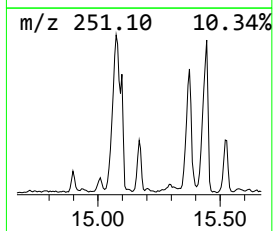
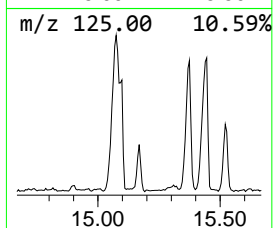
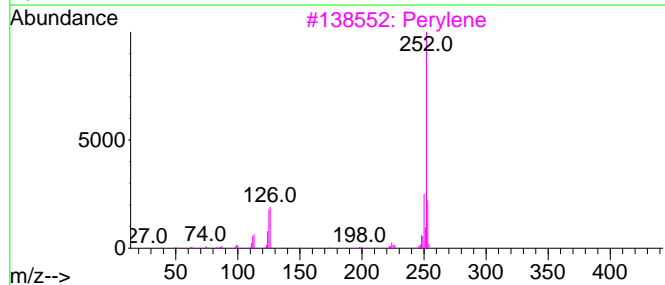
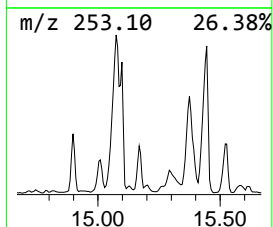
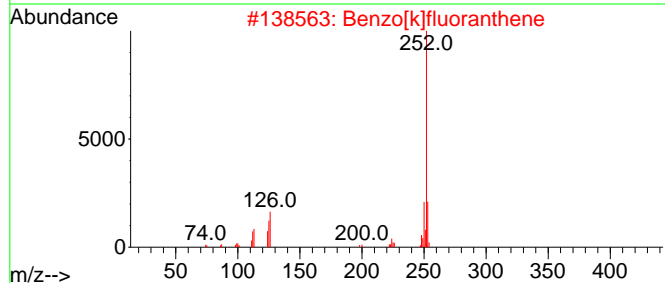
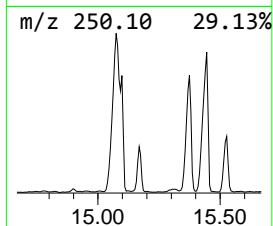
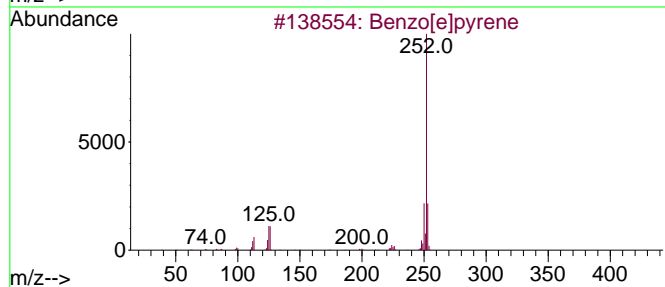
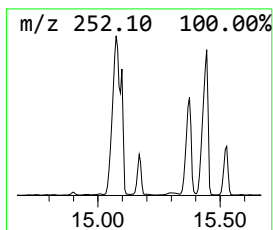
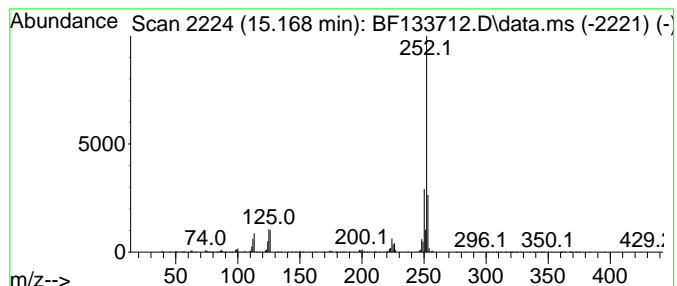
Quant Method : Z:\svoasrv\HPCHEM1\BNA_F\Methods\8270-BF060923.M
 Quant Title : ASP BNA STANDARDS FOR 5 POINT CALIBRATION

TIC Library : C:\Database\NIST20.L
 TIC Integration Parameters: LSCINT.P

 Peak Number 15 Benzo[e]pyrene Concentration Rank 2

R.T.	EstConc	Area	Relative to ISTD	R.T.
15.168	32.63 ng	579665	Perylene-d12	15.492

Hit#	of 5	Tentative ID	MW	MolForm	CAS#	Qual
1		Benzo[e]pyrene	252	C20H12	000192-97-2	98
2		Benzo[k]fluoranthene	252	C20H12	000207-08-9	95
3		Perylene	252	C20H12	000198-55-0	93
4		Benzo[b]fluoranthene	252	C20H12	000205-99-2	93
5		Benzo[a]pyrene	252	C20H12	000050-32-8	90



Data Path : Z:\svoasrv\HPCHEM1\BNA_F\Data\BF061223\
 Data File : BF133712.D
 Acq On : 12 Jun 2023 19:36
 Operator : CG\JU
 Sample : 03044-09
 Misc :
 ALS Vial : 13 Sample Multiplier: 1

Instrument :
 BNA_F
 ClientSampleId :
 SB-04-5.0-7.0

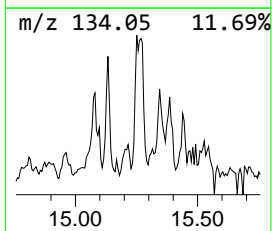
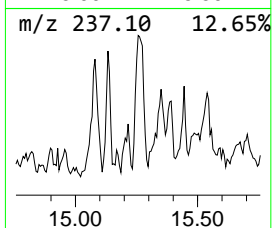
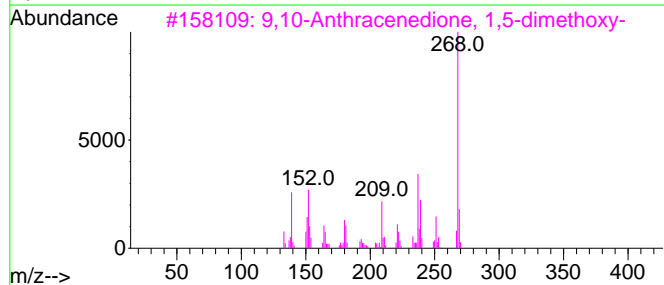
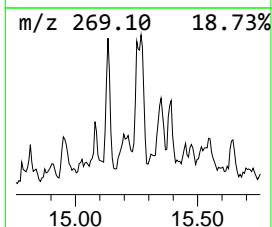
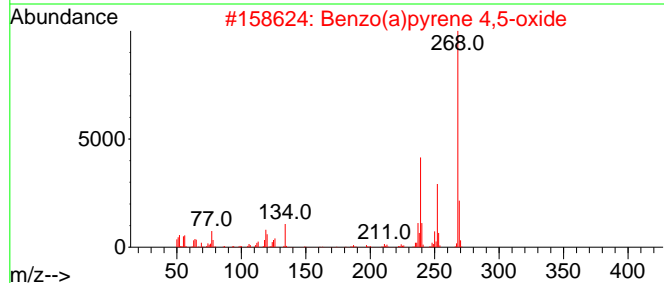
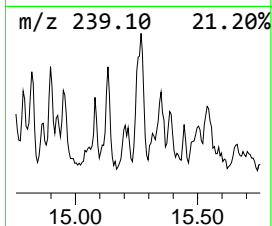
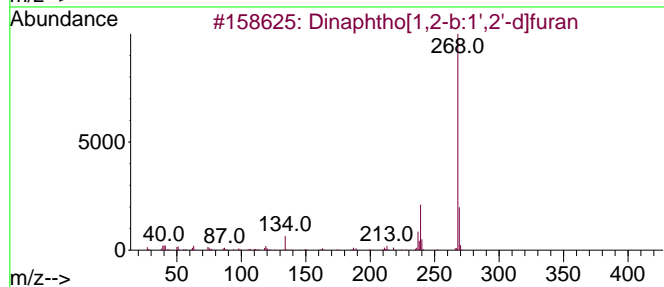
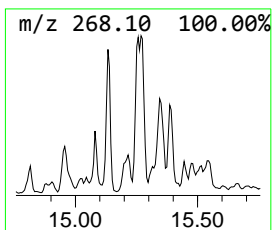
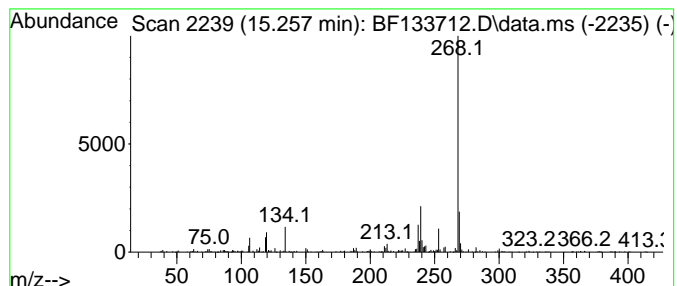
Quant Method : Z:\svoasrv\HPCHEM1\BNA_F\Methods\8270-BF060923.M
 Quant Title : ASP BNA STANDARDS FOR 5 POINT CALIBRATION

TIC Library : C:\Database\NIST20.L
 TIC Integration Parameters: LSCINT.P

 Peak Number 16 Dinaphtho[1,2-b:1',2'-d]furan Concentration Rank 9

R.T.	EstConc	Area	Relative to ISTD	R.T.
15.257	11.89 ng	211300	Perylene-d12	15.492

Hit#	of 5	Tentative ID	MW	MolForm	CAS#	Qual
1		Dinaphtho[1,2-b:1',2'-d]furan	268	C20H12O	000207-93-2	90
2		Benzo(a)pyrene 4,5-oxide	268	C20H12O	037574-47-3	83
3		9,10-Anthracenedione, 1,5-dimeth...	268	C16H12O4	006448-90-4	59
4		Dinaphtho[2,1-b:1',2'-d]furan	268	C20H12O	000194-63-8	58
5		2,3,4,9-Tetrahydro-1H-carbazole-...	268	C16H20N2Si	1000478-28-7	58



Data Path : Z:\svoasrv\HPCHEM1\BNA_F\Data\BF061223\
 Data File : BF133712.D
 Acq On : 12 Jun 2023 19:36
 Operator : CG\JU
 Sample : 03044-09
 Misc :
 ALS Vial : 13 Sample Multiplier: 1

Instrument :
 BNA_F
 ClientSampleId :
 SB-04-5.0-7.0

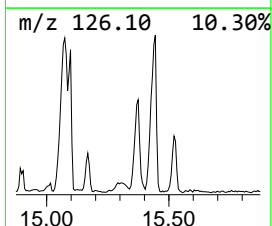
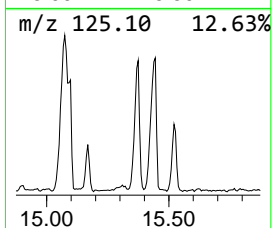
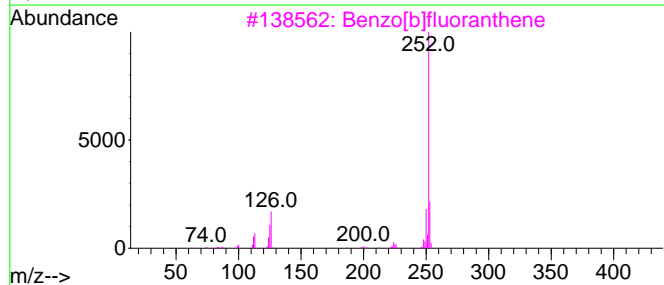
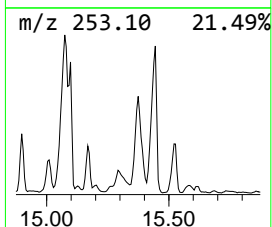
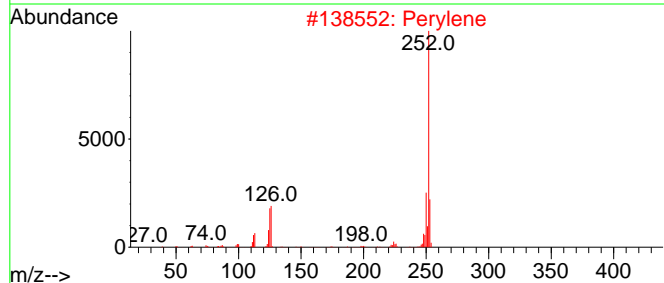
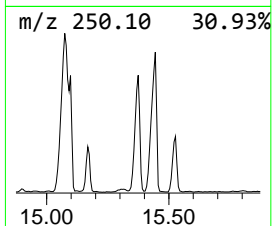
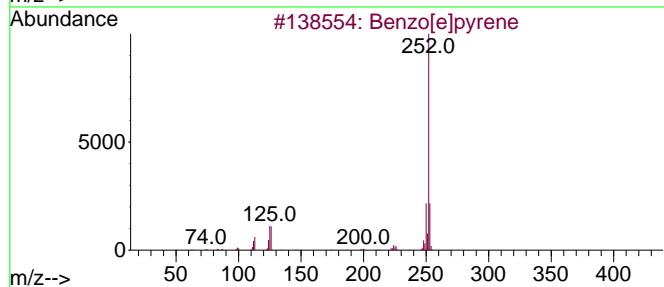
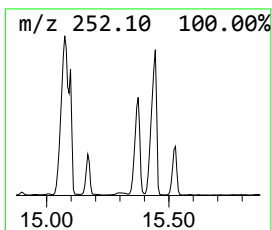
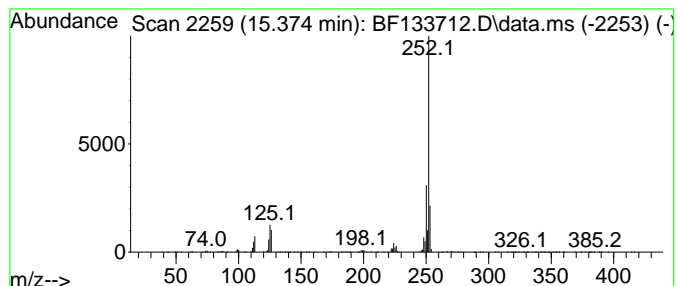
Quant Method : Z:\svoasrv\HPCHEM1\BNA_F\Methods\8270-BF060923.M
 Quant Title : ASP BNA STANDARDS FOR 5 POINT CALIBRATION

TIC Library : C:\Database\NIST20.L
 TIC Integration Parameters: LSCINT.P

 Peak Number 17 Perylene Concentration Rank 1

R.T.	EstConc	Area	Relative to ISTD	R.T.
15.374	121.04 ng	2150100	Perylene-d12	15.492

Hit#	of 5	Tentative ID	MW	MolForm	CAS#	Qual
1		Benzo[e]pyrene	252	C20H12	000192-97-2	97
2		Perylene	252	C20H12	000198-55-0	95
3		Benzo[b]fluoranthene	252	C20H12	000205-99-2	90
4		Benzo[a]pyrene	252	C20H12	000050-32-8	90
5		Benzo[k]fluoranthene	252	C20H12	000207-08-9	90



Data Path : Z:\svoasrv\HPCHEM1\BNA_F\Data\BF061223\
 Data File : BF133712.D
 Acq On : 12 Jun 2023 19:36
 Operator : CG\JU
 Sample : 03044-09
 Misc :
 ALS Vial : 13 Sample Multiplier: 1

Instrument :
 BNA_F
 ClientSampleId :
 SB-04-5.0-7.0

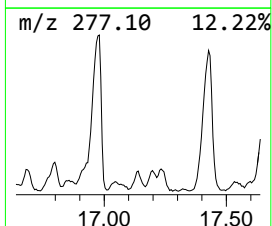
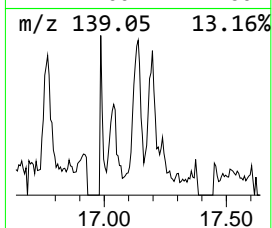
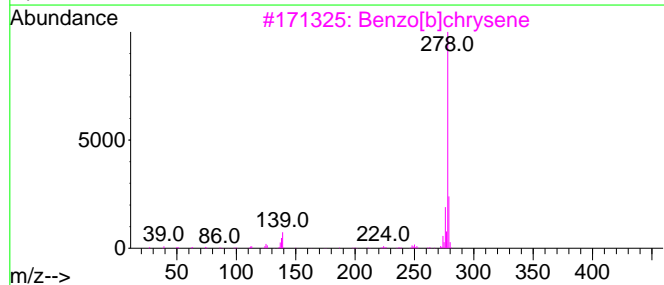
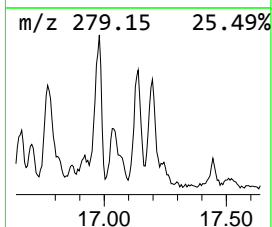
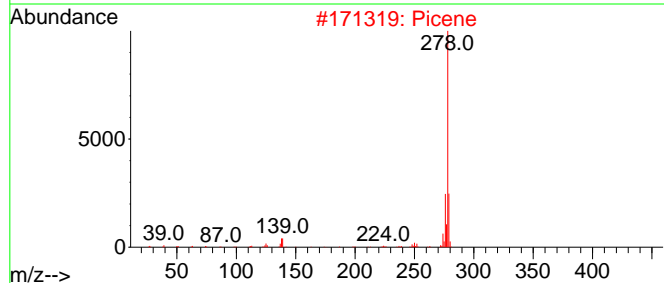
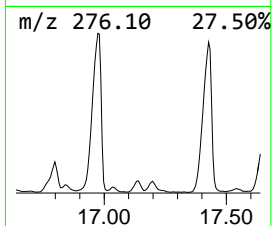
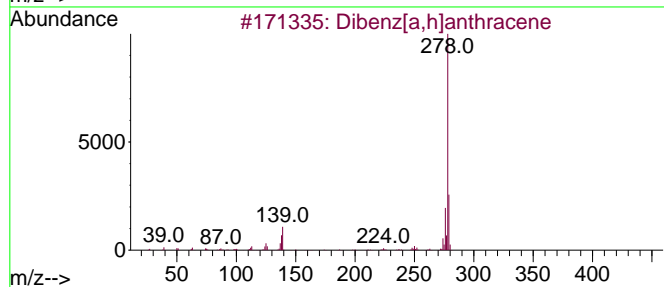
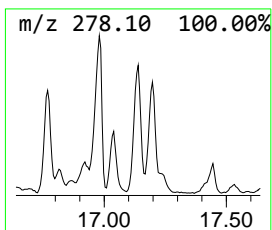
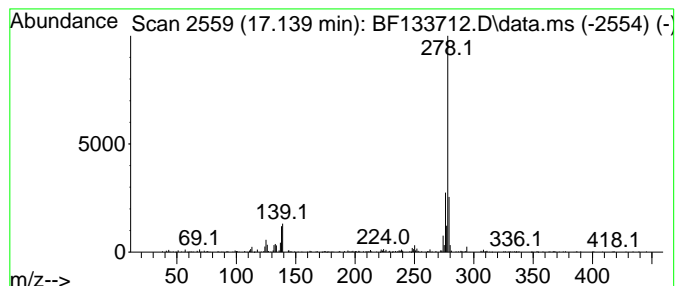
Quant Method : Z:\svoasrv\HPCHEM1\BNA_F\Methods\8270-BF060923.M
 Quant Title : ASP BNA STANDARDS FOR 5 POINT CALIBRATION

TIC Library : C:\Database\NIST20.L
 TIC Integration Parameters: LSCINT.P

 Peak Number 18 Picene Concentration Rank 7

R.T.	EstConc	Area	Relative to ISTD	R.T.
17.139	17.31 ng	307479	Perylene-d12	15.492

Hit#	of 5	Tentative ID	MW	MolForm	CAS#	Qual
1		Dibenz[a,h]anthracene	278	C22H14	000053-70-3	99
2		Picene	278	C22H14	000213-46-7	98
3		Benzo[b]chrysene	278	C22H14	000214-17-5	98
4		Pentaphene	278	C22H14	000222-93-5	97
5		Benzo[b]triphenylene	278	C22H14	000215-58-7	94



Data Path : Z:\svoasrv\HPCHEM1\BNA_F\Data\BF061223\
 Data File : BF133712.D
 Acq On : 12 Jun 2023 19:36
 Operator : CG\JU
 Sample : 03044-09
 Misc :
 ALS Vial : 13 Sample Multiplier: 1

Instrument :
 BNA_F
 ClientSampleId :
 SB-04-5.0-7.0

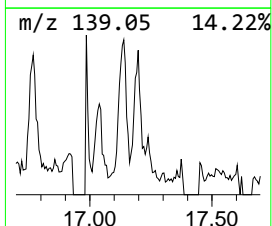
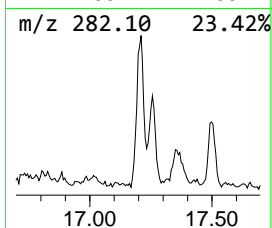
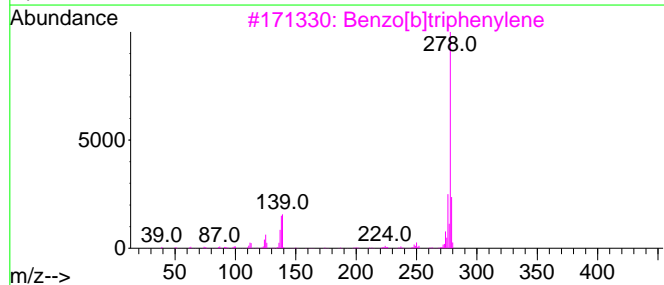
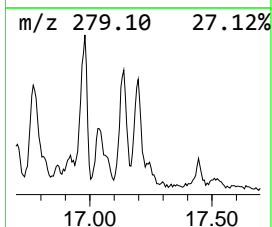
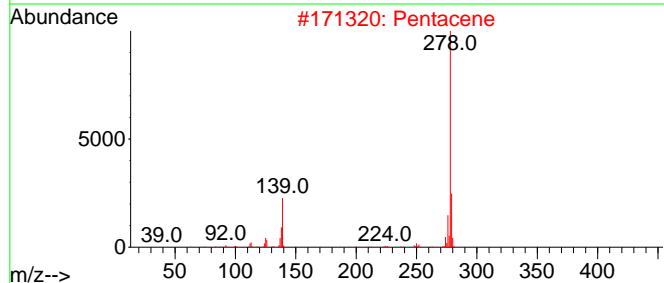
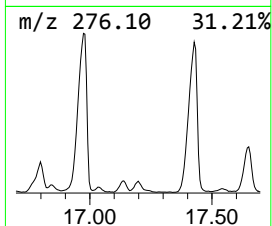
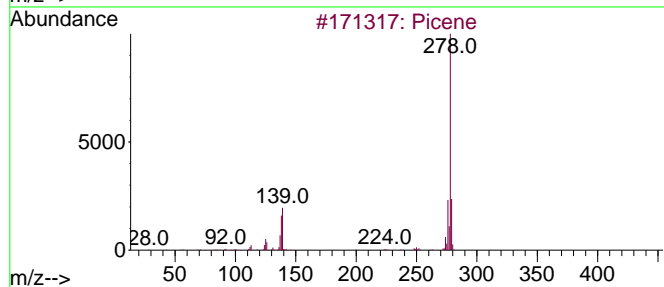
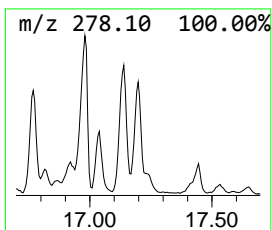
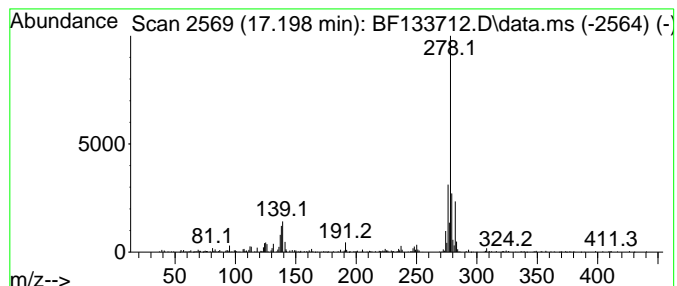
Quant Method : Z:\svoasrv\HPCHEM1\BNA_F\Methods\8270-BF060923.M
 Quant Title : ASP BNA STANDARDS FOR 5 POINT CALIBRATION

TIC Library : C:\Database\NIST20.L
 TIC Integration Parameters: LSCINT.P

 Peak Number 19 Pentacene Concentration Rank 6

R.T.	EstConc	Area	Relative to ISTD	R.T.
17.198	18.86 ng	335076	Perylene-d12	15.492

Hit#	of	5	Tentative ID	MW	MolForm	CAS#	Qual
1			Picene	278	C22H14	000213-46-7	93
2			Pentacene	278	C22H14	000135-48-8	92
3			Benzo[b]triphenylene	278	C22H14	000215-58-7	91
4			Benzo[a]naphthacene	278	C22H14	000226-88-0	89
5			Pentaphene	278	C22H14	000222-93-5	86



Data Path : Z:\svoasrv\HPCHEM1\BNA_F\Data\BF061223\
 Data File : BF133712.D
 Acq On : 12 Jun 2023 19:36
 Operator : CG\JU
 Sample : 03044-09
 Misc :
 ALS Vial : 13 Sample Multiplier: 1

Instrument :
 BNA_F
 ClientSampleId :
 SB-04-5.0-7.0

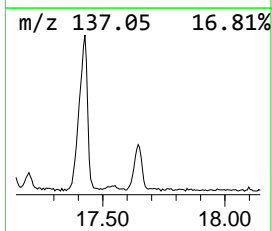
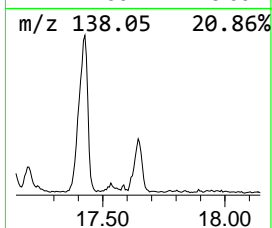
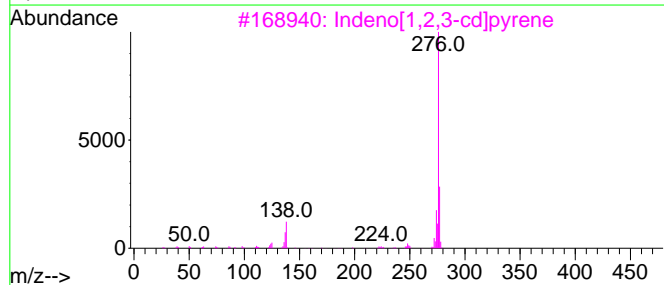
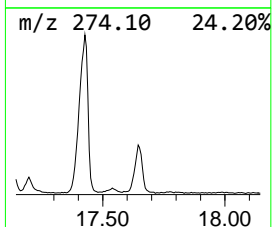
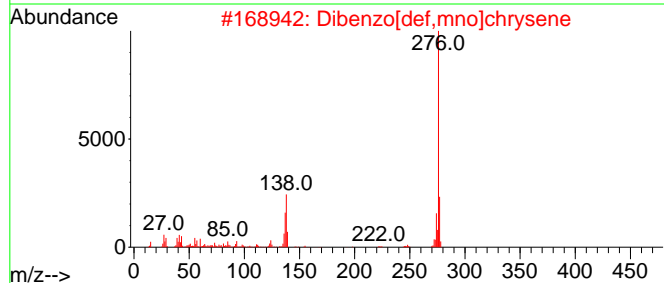
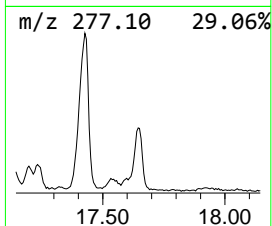
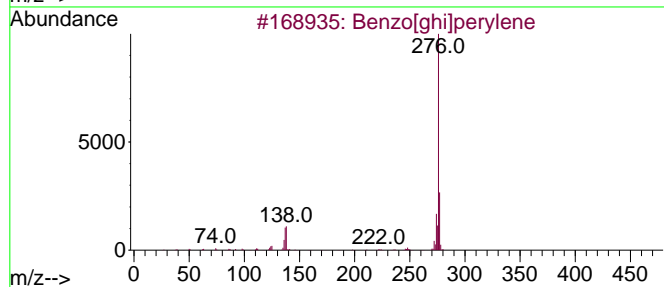
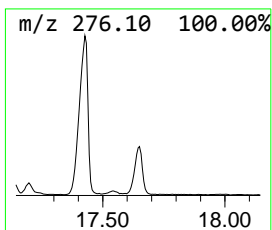
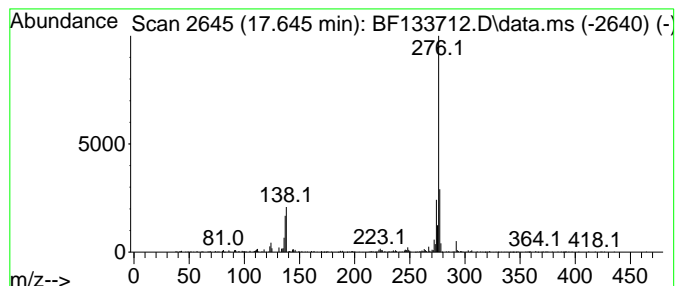
Quant Method : Z:\svoasrv\HPCHEM1\BNA_F\Methods\8270-BF060923.M
 Quant Title : ASP BNA STANDARDS FOR 5 POINT CALIBRATION

TIC Library : C:\Database\NIST20.L
 TIC Integration Parameters: LSCINT.P

 Peak Number 20 Dibenzo[def,mno]chrysene Concentration Rank 3

R.T.	EstConc	Area	Relative to ISTD	R.T.
17.645	32.38 ng	575221	Perylene-d12	15.492

Hit#	of 5	Tentative ID	MW	MolForm	CAS#	Qual
1		Benzo[ghi]perylene	276	C22H12	000191-24-2	97
2		Dibenzo[def,mno]chrysene	276	C22H12	000191-26-4	94
3		Indeno[1,2,3-cd]pyrene	276	C22H12	000193-39-5	89
4		Benzoic acid, 2-acetoxy-6-bromo-...	316	C12H13BrO5	1000268-53-4	53
5		Indeno[1,2,3-cd]fluoranthene	276	C22H12	000193-43-1	50



Data Path : Z:\svoasrv\HPCHEM1\BNA_F\Data\BF061223\
 Data File : BF133712.D
 Acq On : 12 Jun 2023 19:36
 Operator : CG\JU
 Sample : 03044-09
 Misc :
 ALS Vial : 13 Sample Multiplier: 1

Instrument :
 BNA_F
 ClientSampleId :
 SB-04-5.0-7.0

Quant Method : Z:\svoasrv\HPCHEM1\BNA_F\Methods\8270-BF060923.M
 Quant Title : ASP BNA STANDARDS FOR 5 POINT CALIBRATION

TIC Library : C:\Database\NIST20.L
 TIC Integration Parameters: LSCINT.P

TIC Top Hit name	RT	EstConc	Units	Response	--Internal Standard--			
					#	RT	Resp	Conc
Naphthalene, 1,...	9.457	10.0	ng	238373	3	9.869	475085	20.0
Naphthalene, 2,...	9.528	12.1	ng	287660	3	9.869	475085	20.0
Diphenylmethane	10.504	9.4	ng	223960	3	9.869	475085	20.0
9H-Fluoren-3-ol	10.575	19.3	ng	459416	3	9.869	475085	20.0
Phenanthrene, 2...	11.898	3.4	ng	1663820	4	11.363	9869770	20.0
4H-Cyclopenta[d...]	11.980	4.2	ng	2092870	4	11.363	9869770	20.0
Pyrene, 1-methyl-	13.033	4.4	ng	1402600	5	14.027	6339980	20.0
11H-Benzo[a]flu...	13.145	4.1	ng	1298380	5	14.027	6339980	20.0
Pyrene, 2-methyl-	13.245	4.7	ng	1477410	5	14.027	6339980	20.0
Benzo[b]naphtho...	13.762	3.0	ng	965251	5	14.027	6339980	20.0
6-Bromo-3,4-dih...	13.792	3.1	ng	978489	5	14.027	6339980	20.0
Cyclopenta[cd]p...	13.816	3.5	ng	1105050	5	14.027	6339980	20.0
Benz[a]anthrace...	14.404	3.7	ng	1184920	5	14.027	6339980	20.0
7,12-Dihydroben...	14.898	21.8	ng	387812	6	15.492	355285	20.0
Benzo[e]pyrene	15.168	32.6	ng	579665	6	15.492	355285	20.0
Dinaphtho[1,2-b...	15.257	11.9	ng	211300	6	15.492	355285	20.0
Perylene	15.374	121.0	ng	2150100	6	15.492	355285	20.0
Picene	17.139	17.3	ng	307479	6	15.492	355285	20.0
Pentacene	17.198	18.9	ng	335076	6	15.492	355285	20.0
Dibenzo[def,mno...	17.645	32.4	ng	575221	6	15.492	355285	20.0