

Data Path : Z:\SVOASRV\HPCHEM1\BNA F\DATA\BF061318\
 Data File : BF106389.D
 Acq On : 13 Jun 2018 14:23
 Operator : JU/SJ
 Sample : J3396-01
 Misc :
 ALS Vial : 4 Sample Multiplier: 1

Instrument :
 BNA_F
 ClientSampleId :
 W-29

Quant Time: Jun 14 02:55:09 2018
 Quant Method : Z:\SVOASRV\HPCHEM1\BNA F\METHODS\8270-BF061118.M
 Quant Title : ASP BNA STANDARDS FOR 5 POINT CALIBRATION
 QLast Update : Wed Jun 13 10:51:26 2018
 Response via : Initial Calibration

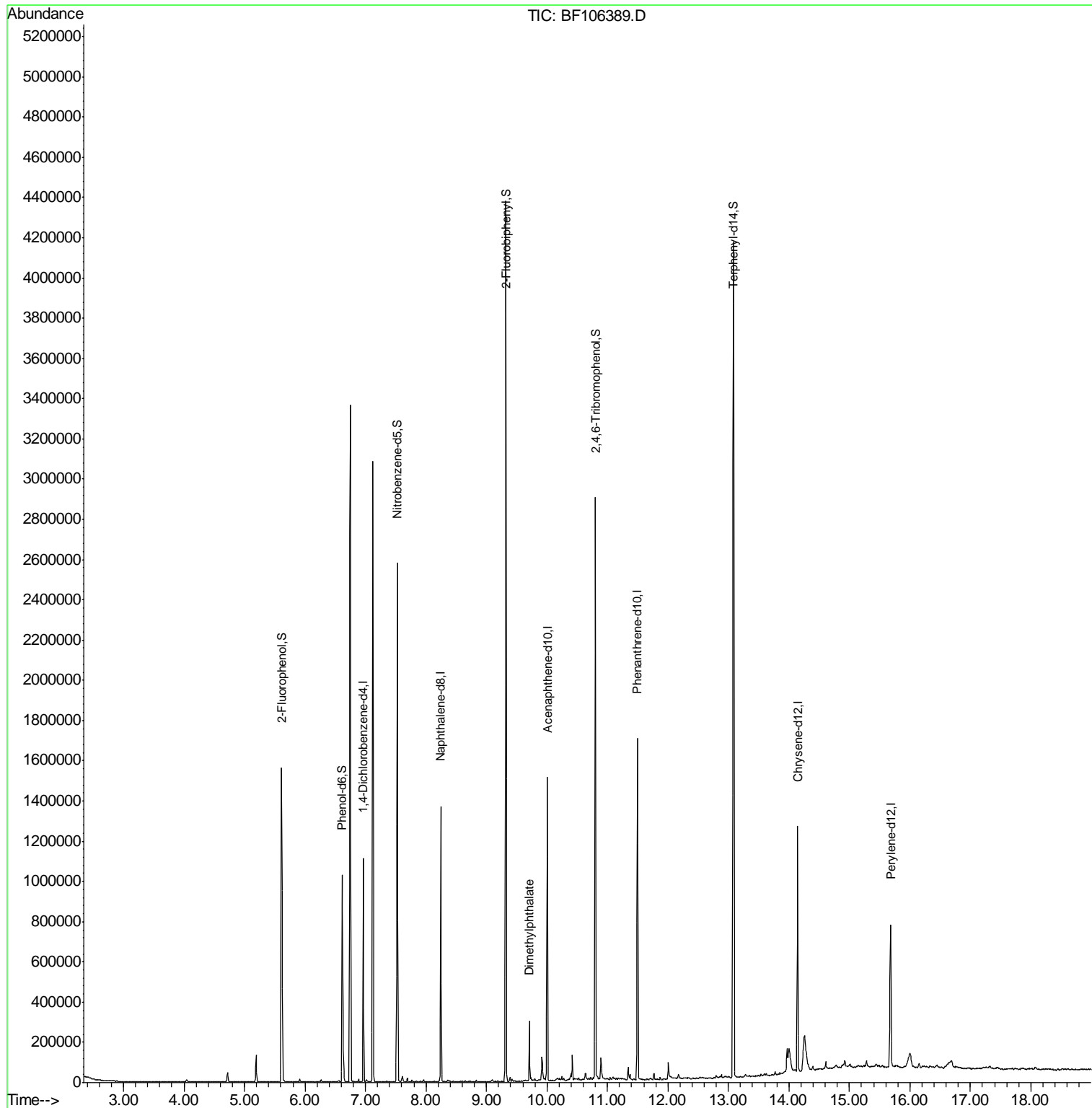
Internal Standards	R.T.	QIon	Response	Conc	Units	Dev(Min)
1) 1,4-Dichlorobenzene-d4	6.97	152	145444	20.00	ng	-0.01
21) Naphthalene-d8	8.25	136	553979	20.00	ng	-0.01
38) Acenaphthene-d10	10.01	164	269924	20.00	ng	-0.01
63) Phenanthrene-d10	11.50	188	556868	20.00	ng	-0.01
75) Chrysene-d12	14.14	240	404980	20.00	ng	-0.02
86) Perylene-d12	15.68	264	337587	20.00	ng	0.00
System Monitoring Compounds						
5) 2-Fluorophenol	5.61	112	528303	61.48	ng	-0.01
7) Phenol-d6	6.61	99	425400	39.18	ng	-0.01
23) Nitrobenzene-d5	7.53	82	893850	94.92	ng	0.00
41) 2,4,6-Tribromophenol	10.80	330	426415	164.19	ng	-0.01
44) 2-Fluorobiphenyl	9.32	172	1439494	100.01	ng	0.00
78) Terphenyl-d14	13.08	244	1717265	105.32	ng	0.00
Target Compounds						Qvalue
49) Dimethylphthalate	9.71	163	103953	5.390	ng	99

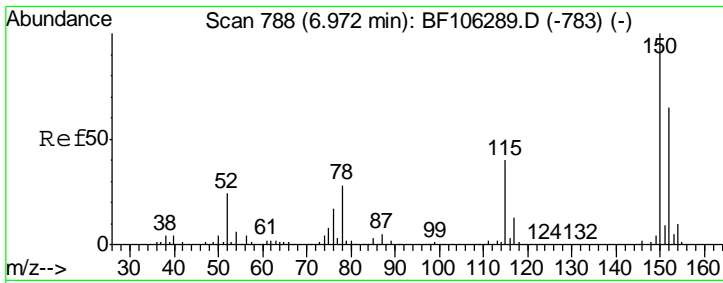
(#) = qualifier out of range (m) = manual integration (+) = signals summed

Data Path : Z:\SVOASRV\HPCHEM1\BNA F\DATA\BF061318\
Data File : BF106389.D
Acq On : 13 Jun 2018 14:23
Operator : JU/SJ
Sample : J3396-01
Misc :
ALS Vial : 4 Sample Multiplier: 1

Instrument :
BNA_F
ClientSampled :
W-29

Quant Time: Jun 14 02:55:09 2018
Quant Method : Z:\SVOASRV\HPCHEM1\BNA F\METHODS\8270-BF061118.M
Quant Title : ASP BNA STANDARDS FOR 5 POINT CALIBRATION
QLast Update : Wed Jun 13 10:51:26 2018
Response via : Initial Calibration

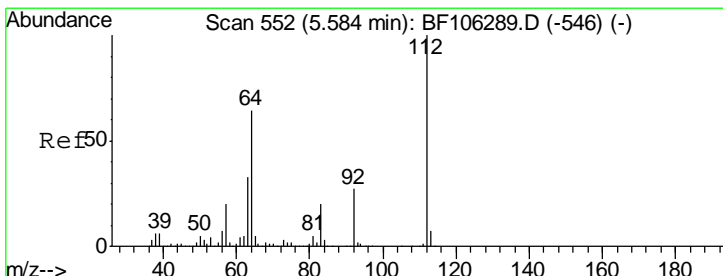
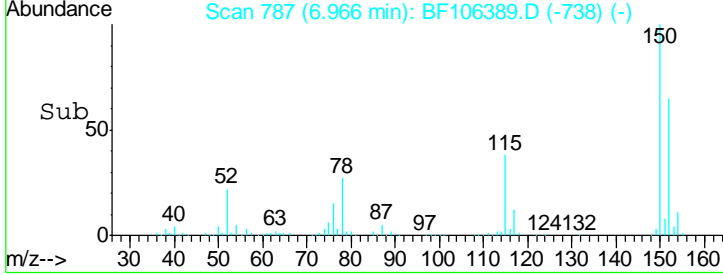
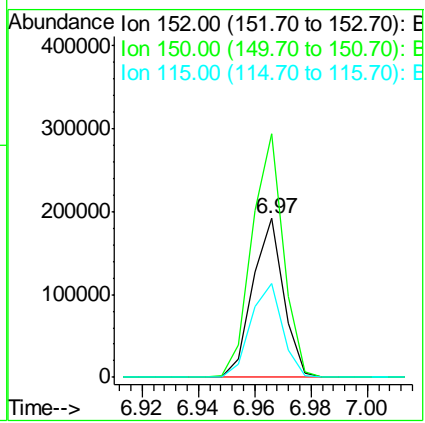
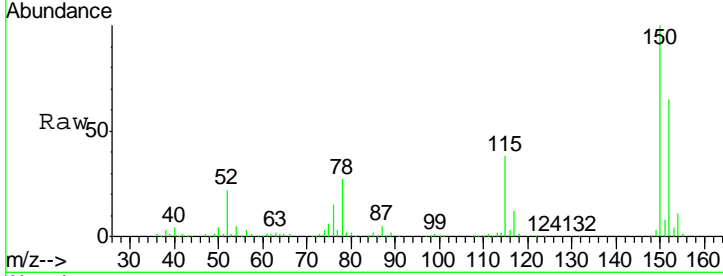




#1
 1,4-Dichlorobenzene-d4
 Concen: 20.000 ng
 RT: 6.97 min Scan# 787
 Delta R.T. -0.01 min
 Lab File: BF106389.D
 Acq: 13 Jun 2018 14:23

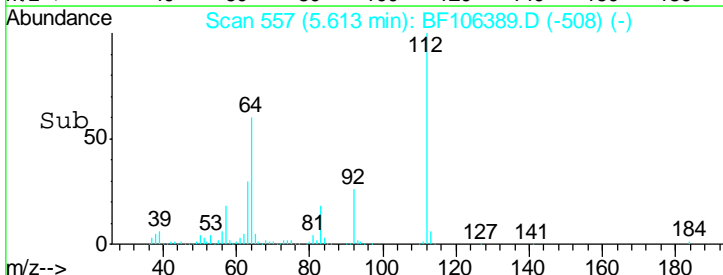
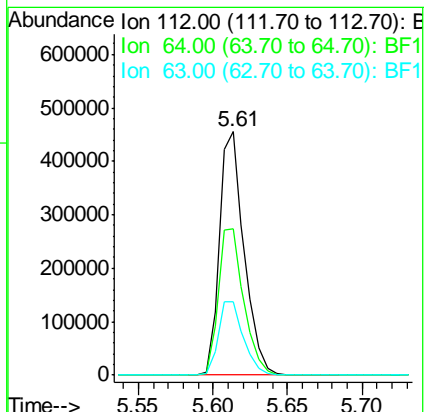
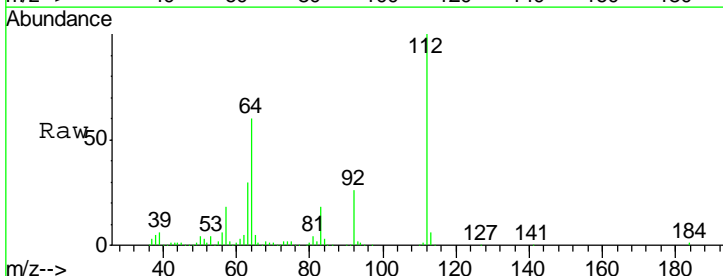
Instrument :
 BNA_F
ClientSampled :
 W-29

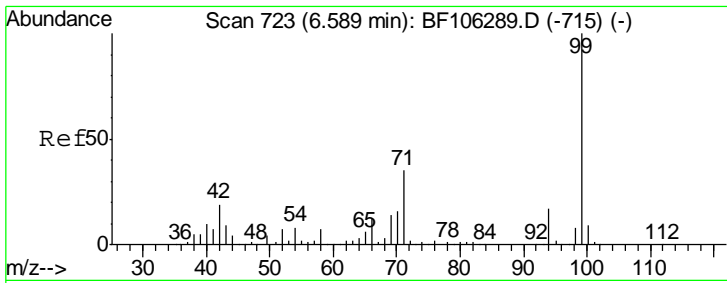
Tgt Ion	Resp	Lower	Upper
152	145444		
150	153.2	124.6	186.8
115	59.0	50.1	75.1



#5
 2-Fluorophenol
 Concen: 61.477 ng
 RT: 5.61 min Scan# 557
 Delta R.T. -0.01 min
 Lab File: BF106389.D
 Acq: 13 Jun 2018 14:23

Tgt Ion	Resp	Lower	Upper
112	528303		
64	60.0	47.9	71.9
63	30.1	23.7	35.5

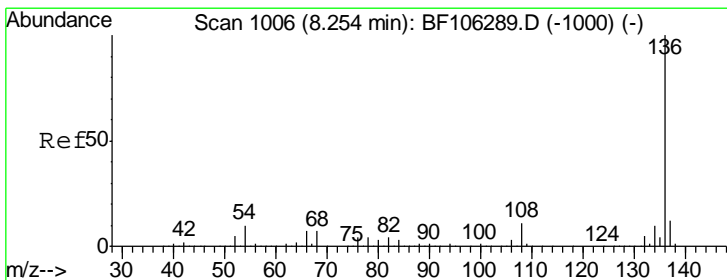
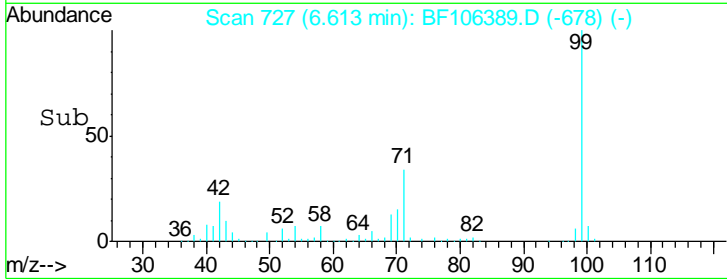
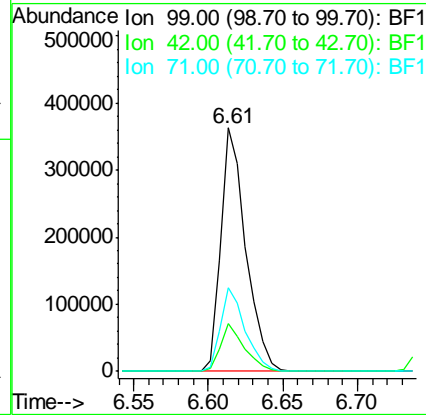
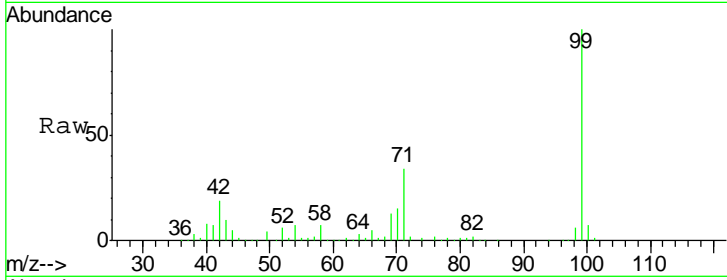




#7
 Phenol-d6
 Concen: 39.182 ng
 RT: 6.61 min Scan# 727
 Delta R.T. -0.01 min
 Lab File: BF106389.D
 Acq: 13 Jun 2018 14:23

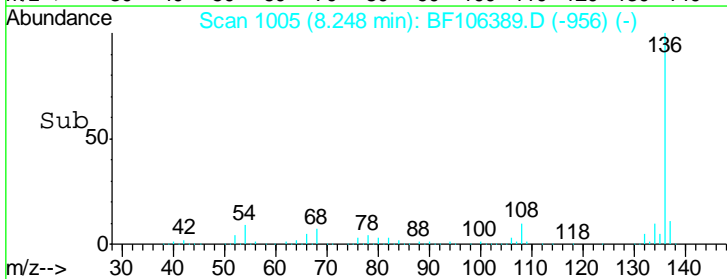
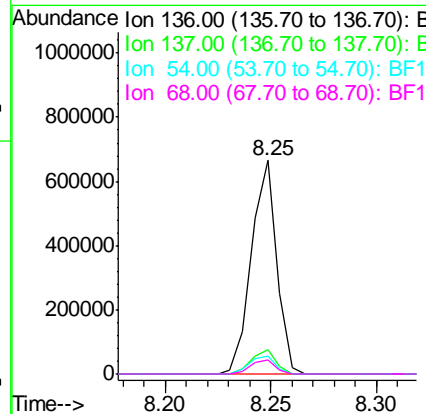
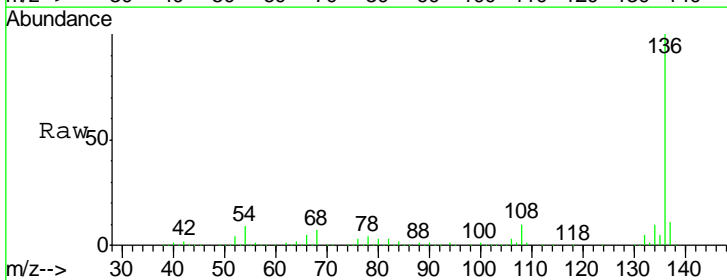
Instrument :
 BNA_F
 ClientSampled :
 W-29

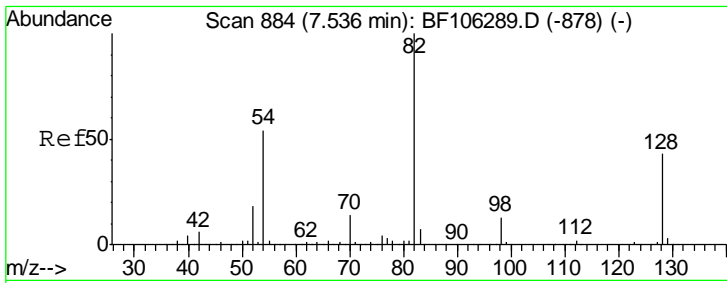
Tgt Ion	Resp	Lower	Upper
99	425400		
42	19.5	14.5	21.7
71	34.5	25.4	38.0



#21
 Naphthalene-d8
 Concen: 20.000 ng
 RT: 8.25 min Scan# 1005
 Delta R.T. -0.01 min
 Lab File: BF106389.D
 Acq: 13 Jun 2018 14:23

Tgt Ion	Resp	Lower	Upper
136	553979		
137	11.4	8.9	13.3
54	8.6	6.6	9.8
68	6.5	5.0	7.4

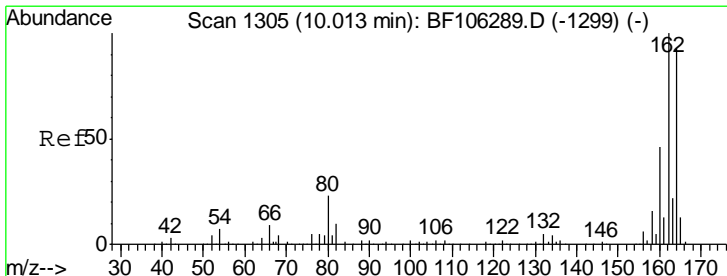
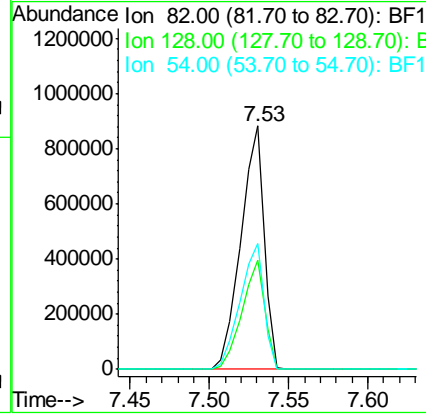
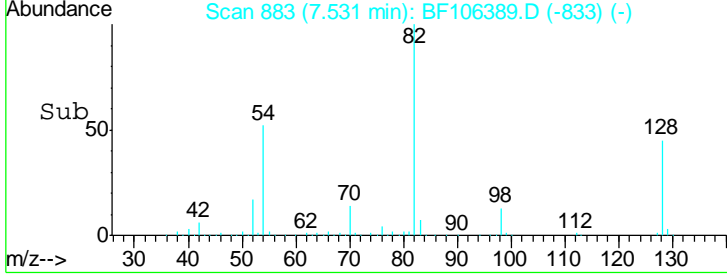
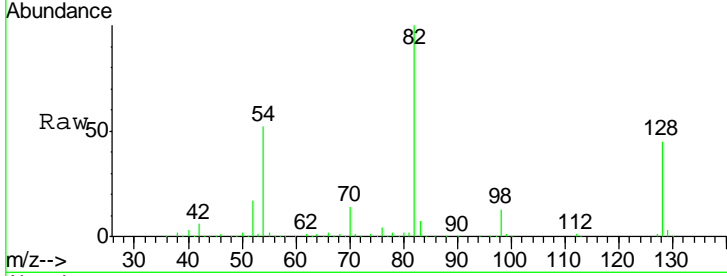




#23
 Nitrobenzene-d5
 Concen: 94.920 ng
 RT: 7.53 min Scan# 883
 Delta R.T. -0.01 min
 Lab File: BF106389.D
 Acq: 13 Jun 2018 14:23

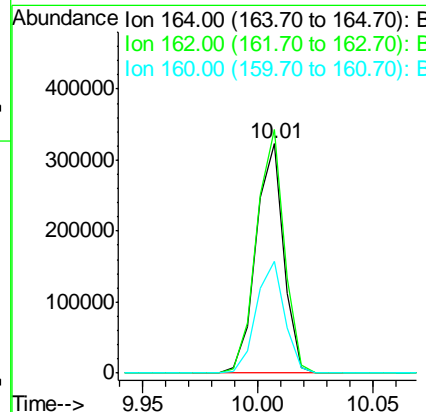
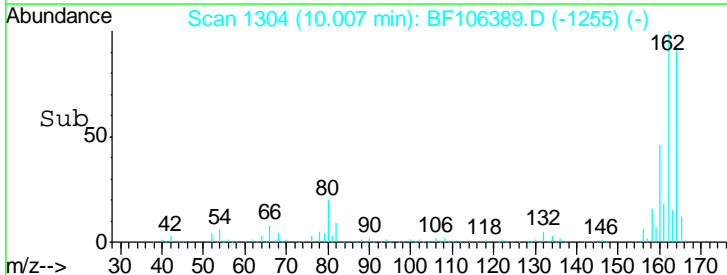
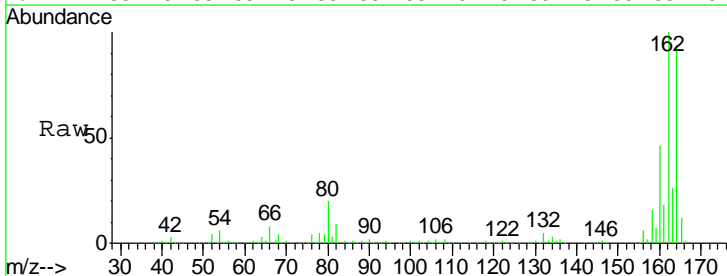
Instrument :
 BNA_F
 ClientSampled :
 W-29

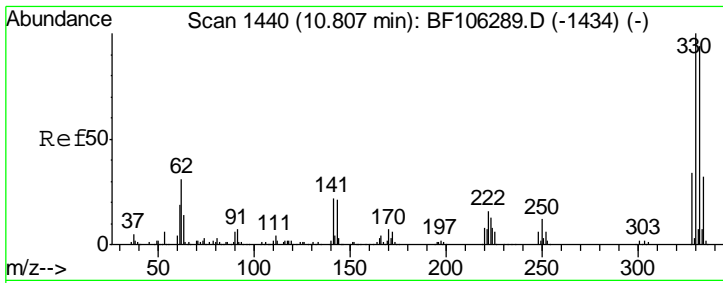
Tgt Ion	Resp	Lower	Upper
82	100		
128	45.0	36.1	54.1
54	51.8	41.4	62.2



#38
 Acenaphthene-d10
 Concen: 20.000 ng
 RT: 10.01 min Scan# 1304
 Delta R.T. -0.01 min
 Lab File: BF106389.D
 Acq: 13 Jun 2018 14:23

Tgt Ion	Resp	Lower	Upper
164	100		
162	106.3	86.1	129.1
160	49.1	38.3	57.5

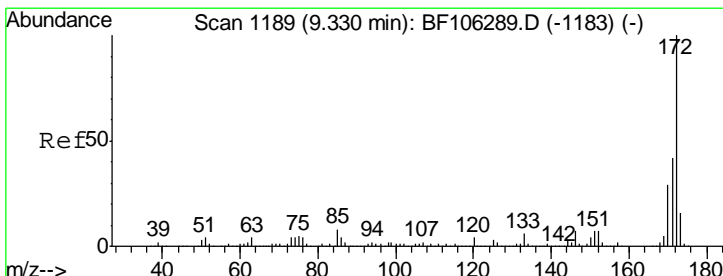
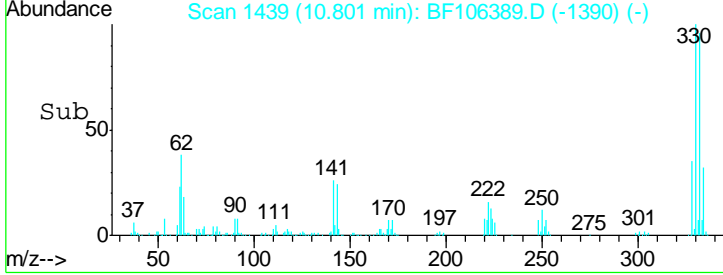
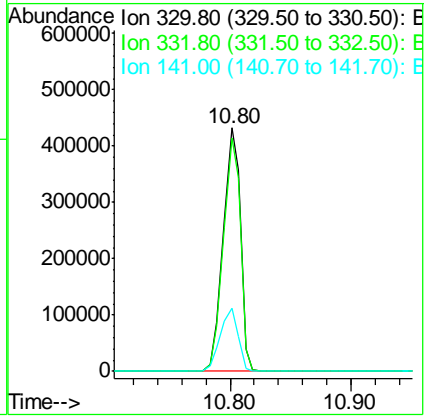
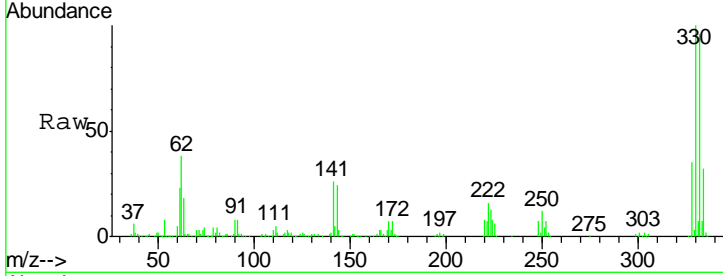




#41
 2,4,6-Tribromophenol
 Concen: 164.187 ng
 RT: 10.80 min Scan# 1439
 Delta R.T. -0.01 min
 Lab File: BF106389.D
 Acq: 13 Jun 2018 14:23

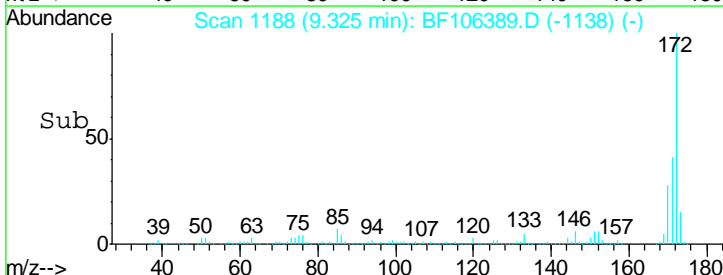
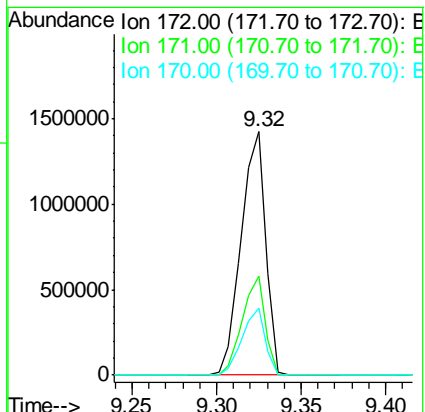
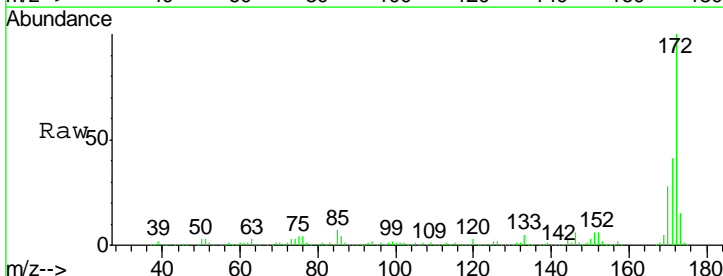
Instrument :
 BNA_F
 ClientSampled :
 W-29

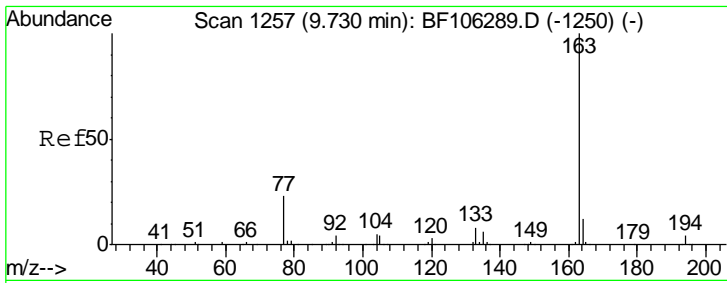
Tgt Ion	Resp	Lower	Upper
330	100		
332	95.5	77.0	115.6
141	26.8	29.9	44.9#



#44
 2-Fluorobiphenyl
 Concen: 100.012 ng
 RT: 9.32 min Scan# 1188
 Delta R.T. -0.01 min
 Lab File: BF106389.D
 Acq: 13 Jun 2018 14:23

Tgt Ion	Resp	Lower	Upper
172	100		
171	40.8	29.7	44.5
170	27.7	19.6	29.4

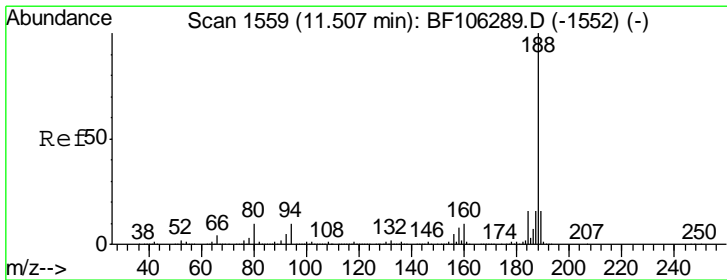
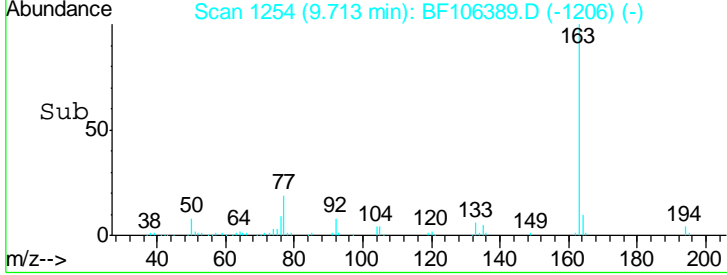
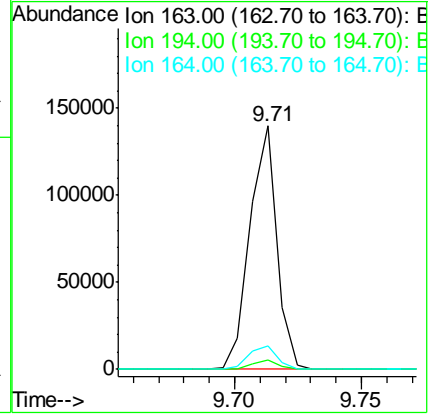
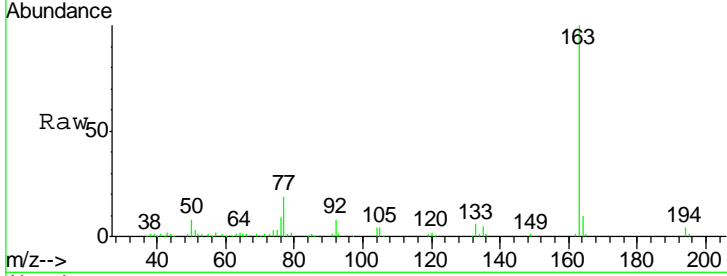




#49
 Dimethylphthalate
 Concen: 5.390 ng
 RT: 9.71 min Scan# 1254
 Delta R.T. -0.02 min
 Lab File: BF106389.D
 Acq: 13 Jun 2018 14:23

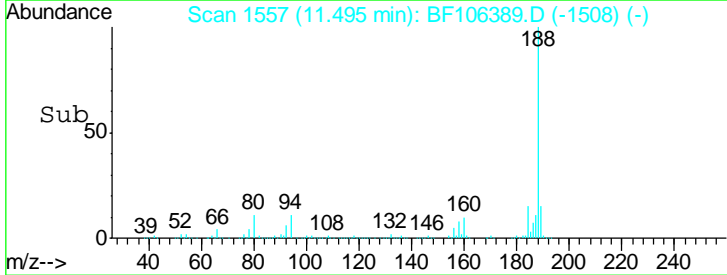
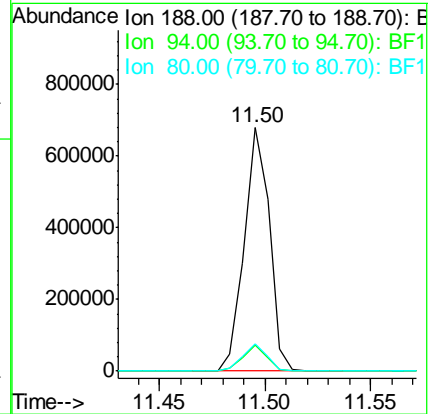
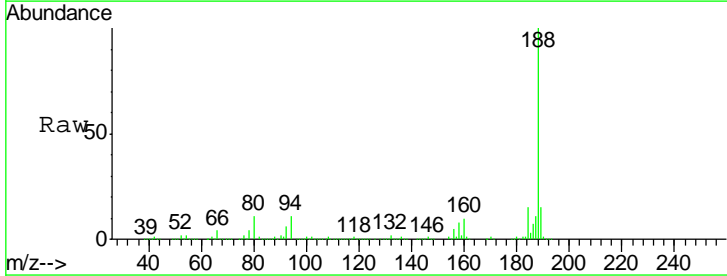
Instrument :
 BNA_F
ClientSampled :
 W-29

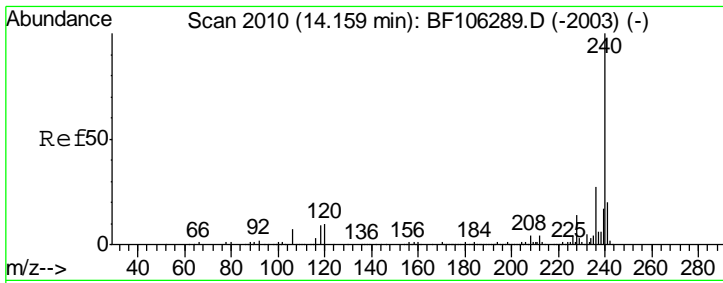
Tgt Ion	Resp	Lower	Upper
163	103953		
194	3.7	2.7	4.1
164	9.7	8.2	12.2



#63
 Phenanthrene-d10
 Concen: 20.000 ng
 RT: 11.50 min Scan# 1557
 Delta R.T. -0.01 min
 Lab File: BF106389.D
 Acq: 13 Jun 2018 14:23

Tgt Ion	Resp	Lower	Upper
188	556868		
94	10.7	8.5	12.7
80	11.3	9.2	13.8

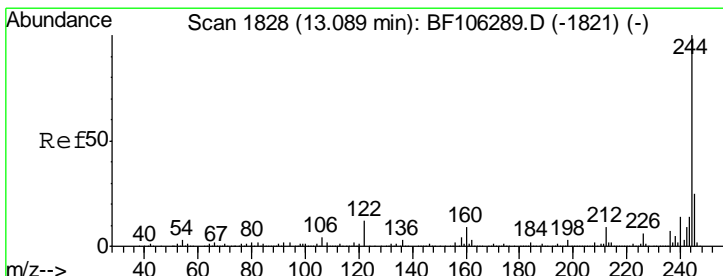
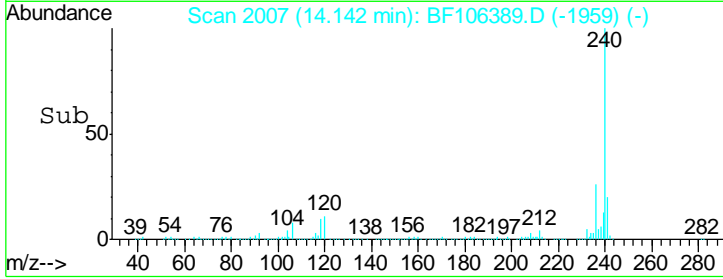
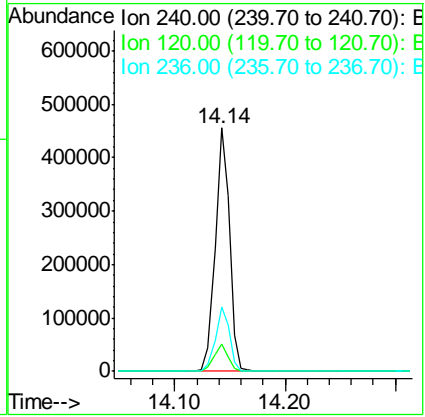
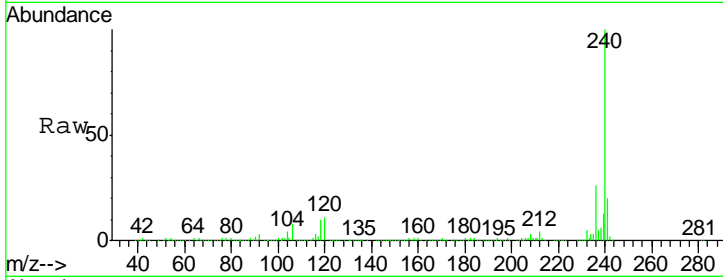




#75
 Chrysene-d12
 Concen: 20.000 ng
 RT: 14.14 min Scan# 2007
 Delta R.T. -0.02 min
 Lab File: BF106389.D
 Acq: 13 Jun 2018 14:23

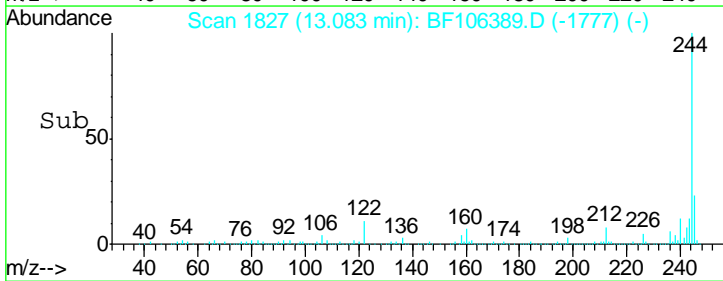
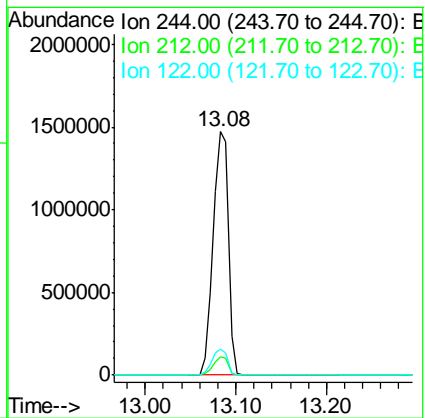
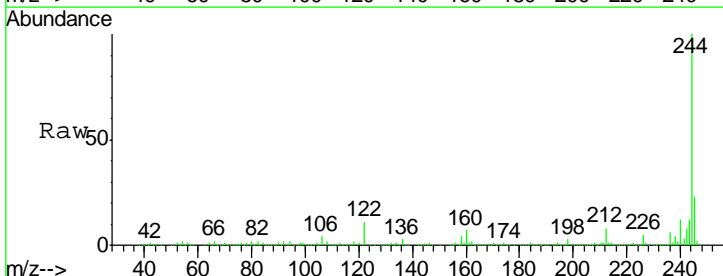
Instrument :
 BNA_F
 ClientSampled :
 W-29

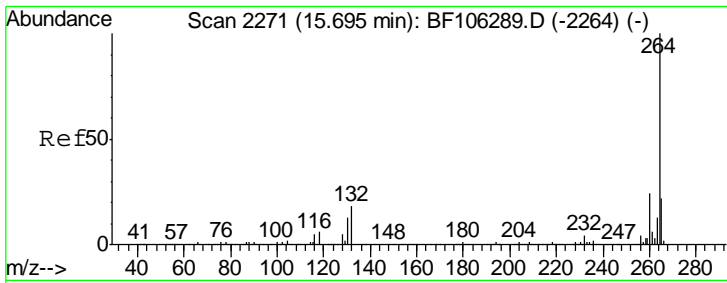
Tgt Ion	Resp	Lower	Upper
240	404980		
120	11.0	9.5	14.3
236	26.2	20.7	31.1



#78
 Terphenyl-d14
 Concen: 105.322 ng
 RT: 13.08 min Scan# 1827
 Delta R.T. -0.01 min
 Lab File: BF106389.D
 Acq: 13 Jun 2018 14:23

Tgt Ion	Resp	Lower	Upper
244	1717265		
212	7.6	5.4	8.0
122	10.9	11.0	16.4





#86
 Perylene-d12
 Concen: 20.000 ng
 RT: 15.68 min Scan# 2269
 Delta R.T. -0.01 min
 Lab File: BF106389.D
 Acq: 13 Jun 2018 14:23

Instrument :
 BNA_F
 ClientSampleID :
 W-29

Tot Ion: 264 Resp: 337587

Ion	Ratio	Lower	Upper
264	100		
260	23.1	19.2	28.8
265	20.7	17.5	26.3

