

Data Path : Z:\SVOASRV\HPCHEM1\BNA F\DATA\BF061318\
 Data File : BF106411.D
 Acq On : 14 Jun 2018 00:20
 Operator : JU/SJ
 Sample : J3458-03
 Misc :
 ALS Vial : 26 Sample Multiplier: 1

Instrument :
 BNA_F
 ClientSampleId :
 EPE-105-5(10-12)

Quant Time: Jun 14 04:07:58 2018
 Quant Method : Z:\SVOASRV\HPCHEM1\BNA F\METHODS\8270-BF061118.M
 Quant Title : ASP BNA STANDARDS FOR 5 POINT CALIBRATION
 QLast Update : Wed Jun 13 10:51:26 2018
 Response via : Initial Calibration

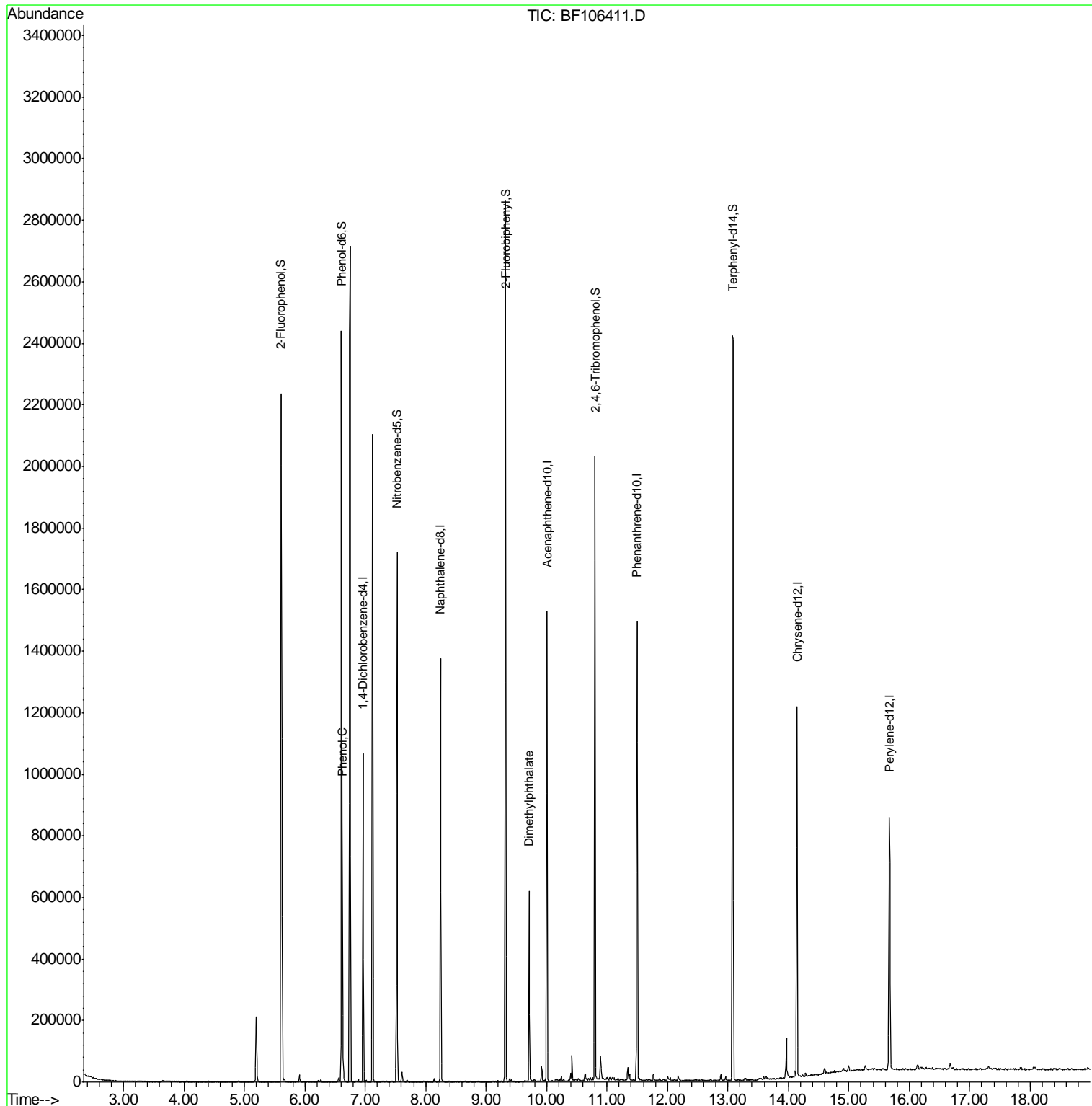
Internal Standards	R.T.	QIon	Response	Conc	Units	Dev(Min)
1) 1,4-Dichlorobenzene-d4	6.97	152	139292	20.00	ng	-0.01
21) Naphthalene-d8	8.25	136	543908	20.00	ng	-0.01
38) Acenaphthene-d10	10.01	164	256686	20.00	ng	-0.01
63) Phenanthrene-d10	11.50	188	504515	20.00	ng	-0.01
75) Chrysene-d12	14.14	240	380461	20.00	ng	-0.02
86) Perylene-d12	15.67	264	384396	20.00	ng	-0.02
System Monitoring Compounds						
5) 2-Fluorophenol	5.61	112	721689	87.69	ng	-0.02
7) Phenol-d6	6.61	99	891606	85.75	ng	-0.02
23) Nitrobenzene-d5	7.52	82	567676	61.40	ng	-0.01
41) 2,4,6-Tribromophenol	10.80	330	250179	101.30	ng	-0.01
44) 2-Fluorobiphenyl	9.32	172	902763	55.25	ng	-0.01
78) Terphenyl-d14	13.08	244	888831	58.03	ng	0.00
Target Compounds						
10) Phenol	6.62	94	24682	2.174	ng	# 65
49) Dimethylphthalate	9.71	163	204719	11.163	ng	99

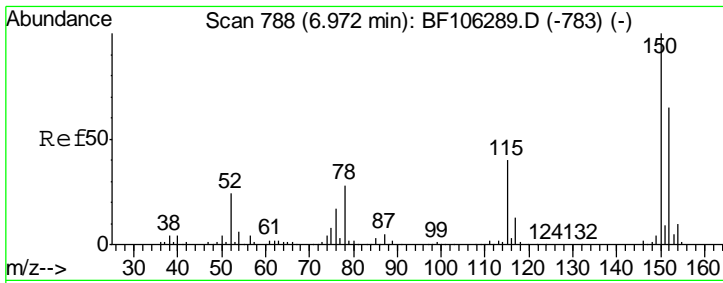
(#) = qualifier out of range (m) = manual integration (+) = signals summed

Data Path : Z:\SVOASRV\HPCHEM1\BNA F\DATA\BF061318\
 Data File : BF106411.D
 Acq On : 14 Jun 2018 00:20
 Operator : JU/SJ
 Sample : J3458-03
 Misc :
 ALS Vial : 26 Sample Multiplier: 1

Instrument :
 BNA_F
 ClientSampleId :
 EPE-105-5(10-12)

Quant Time: Jun 14 04:07:58 2018
 Quant Method : Z:\SVOASRV\HPCHEM1\BNA F\METHODS\8270-BF061118.M
 Quant Title : ASP BNA STANDARDS FOR 5 POINT CALIBRATION
 QLast Update : Wed Jun 13 10:51:26 2018
 Response via : Initial Calibration

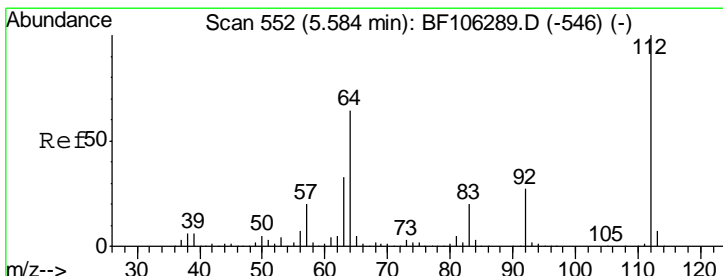
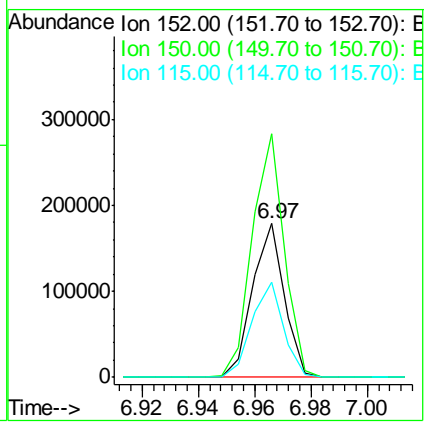
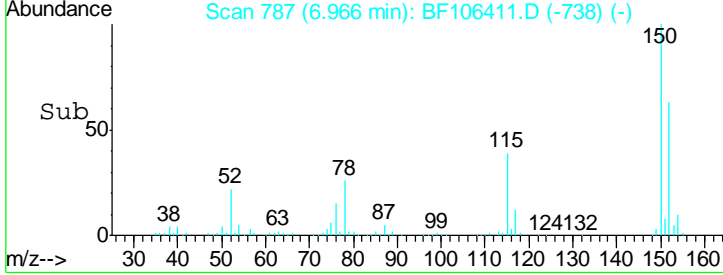
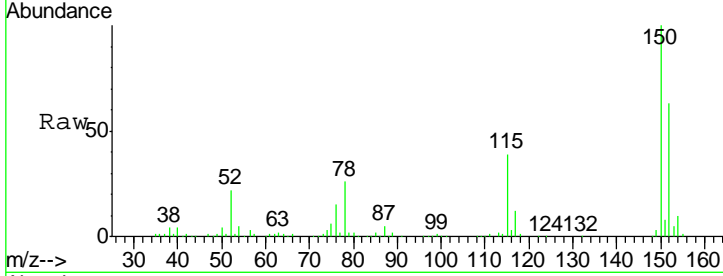




#1
 1,4-Dichlorobenzene-d4
 Concen: 20.000 ng
 RT: 6.97 min Scan# 787
 Delta R.T. -0.01 min
 Lab File: BF106411.D
 Acq: 14 Jun 2018 00:20

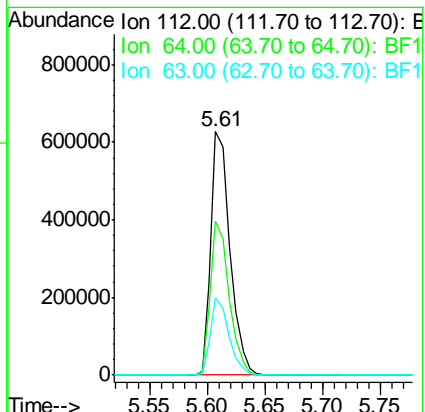
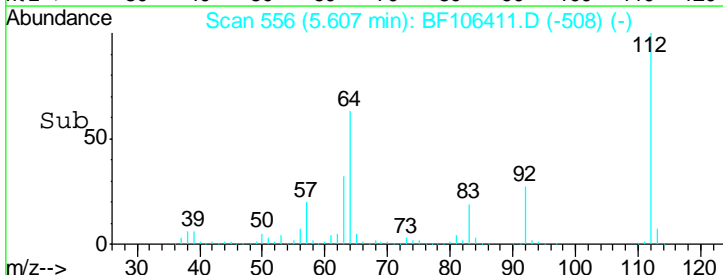
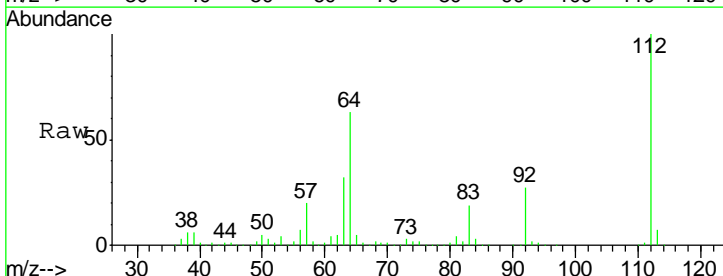
Instrument :
 BNA_F
ClientSampleId :
 EPE-105-5(10-12)

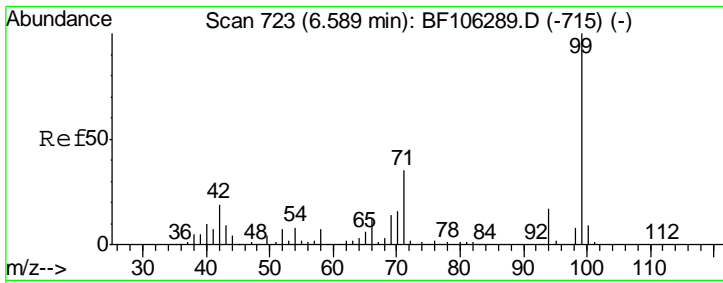
Tgt Ion	Resp	Lower	Upper
152	139292		
150	158.6	124.6	186.8
115	61.6	50.1	75.1



#5
 2-Fluorophenol
 Concen: 87.690 ng
 RT: 5.61 min Scan# 556
 Delta R.T. -0.02 min
 Lab File: BF106411.D
 Acq: 14 Jun 2018 00:20

Tgt Ion	Resp	Lower	Upper
112	721689		
64	63.3	47.9	71.9
63	31.6	23.7	35.5

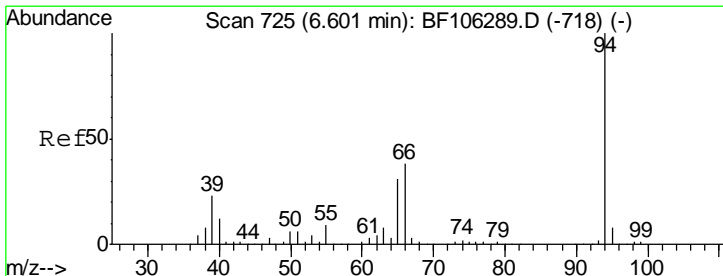
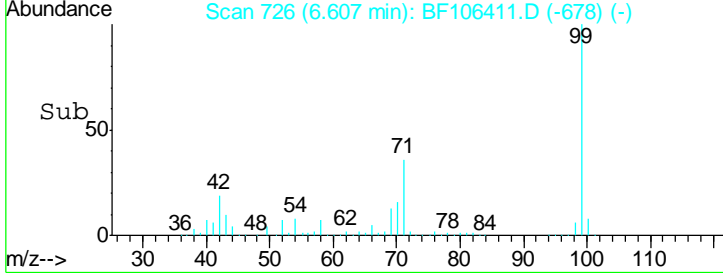
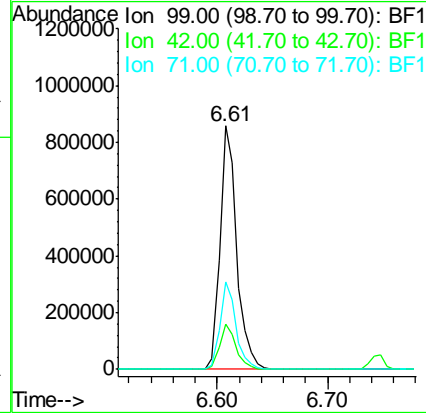
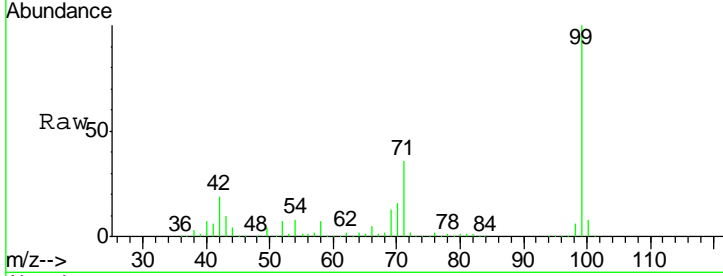




#7
 Phenol-d6
 Concen: 85.750 ng
 RT: 6.61 min Scan# 726
 Delta R.T. -0.02 min
 Lab File: BF106411.D
 Acq: 14 Jun 2018 00:20

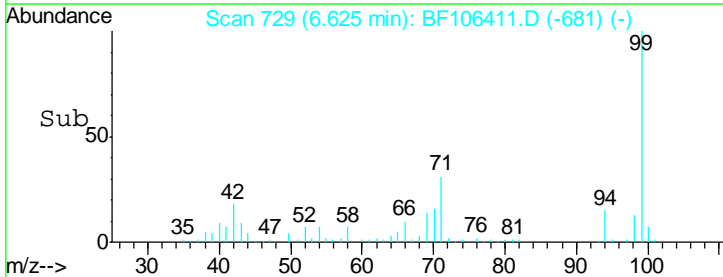
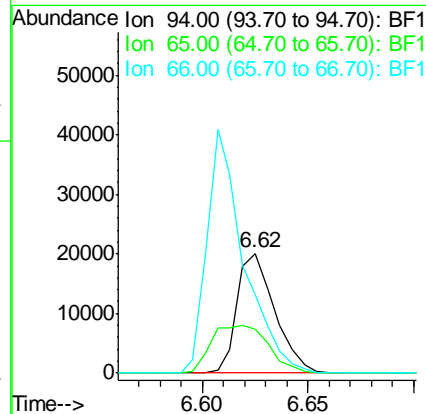
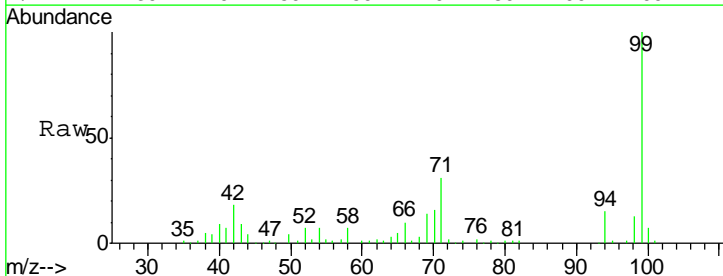
Instrument :
 BNA_F
 ClientSampleId :
 EPE-105-5(10-12)

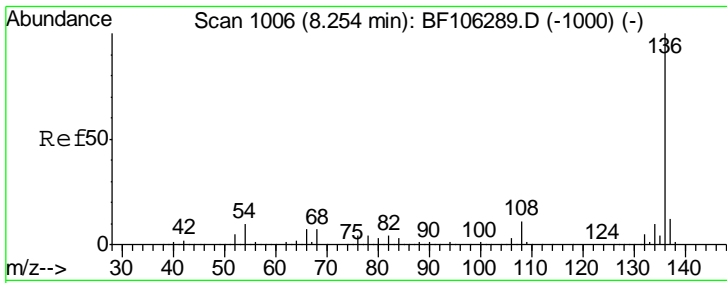
Tgt Ion	Resp	Lower	Upper
99	891606		
Ion Ratio			
99	100		
42	18.8	14.5	21.7
71	35.7	25.4	38.0



#10
 Phenol
 Concen: 2.174 ng
 RT: 6.62 min Scan# 729
 Delta R.T. -0.02 min
 Lab File: BF106411.D
 Acq: 14 Jun 2018 00:20

Tgt Ion	Resp	Lower	Upper
94	24682		
Ion Ratio			
94	100		
65	36.7	7.9	47.9
66	65.6	16.2	56.2#

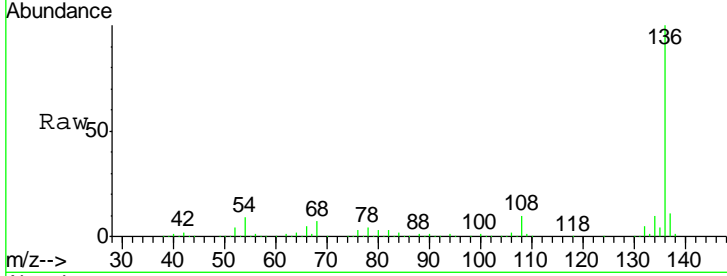




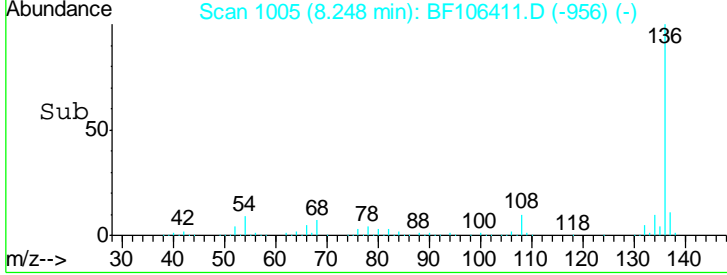
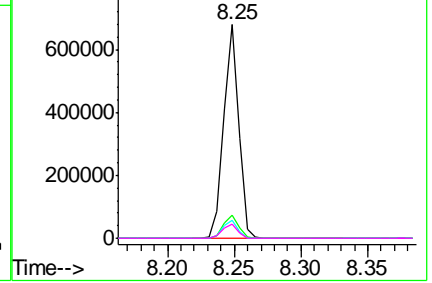
#21
 Naphthalene-d8
 Concen: 20.000 ng
 RT: 8.25 min Scan# 1005
 Delta R.T. -0.01 min
 Lab File: BF106411.D
 Acq: 14 Jun 2018 00:20

Instrument :
 BNA_F
ClientSampled :
 EPE-105-5(10-12)

Tgt Ion	Resp	Lower	Upper
136	543908		
137	10.6	8.9	13.3
54	8.5	6.6	9.8
68	6.8	5.0	7.4

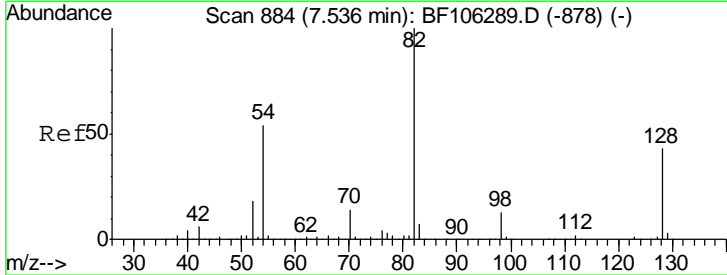


Abundance Ion 136.00 (135.70 to 136.70): E
 Ion 137.00 (136.70 to 137.70): E
 Ion 54.00 (53.70 to 54.70): BF1
 Ion 68.00 (67.70 to 68.70): BF1

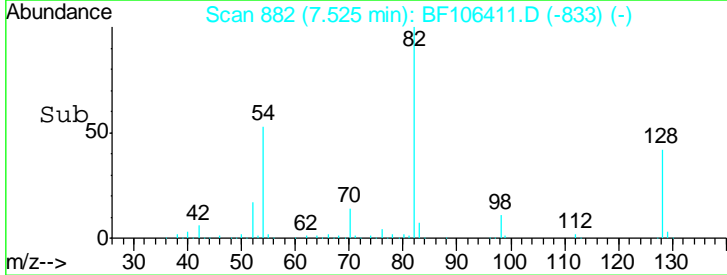
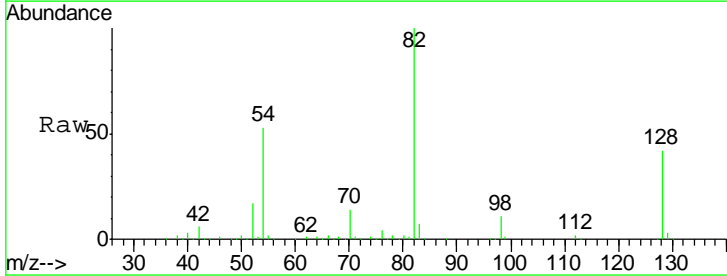
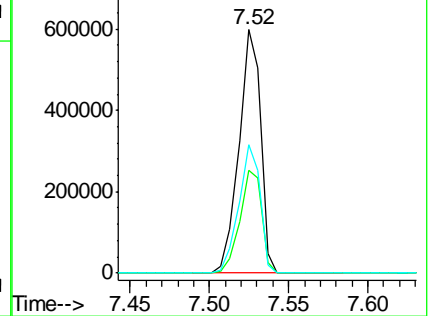


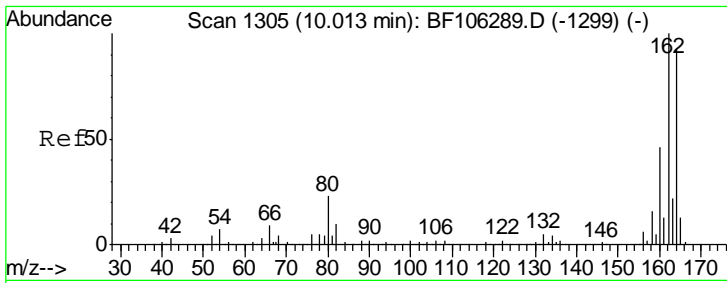
#23
 Nitrobenzene-d5
 Concen: 61.399 ng
 RT: 7.52 min Scan# 882
 Delta R.T. -0.01 min
 Lab File: BF106411.D
 Acq: 14 Jun 2018 00:20

Tgt Ion	Resp	Lower	Upper
82	567676		
128	42.0	36.1	54.1
54	52.6	41.4	62.2



Abundance Ion 82.00 (81.70 to 82.70): BF1
 Ion 128.00 (127.70 to 128.70): E
 Ion 54.00 (53.70 to 54.70): BF1

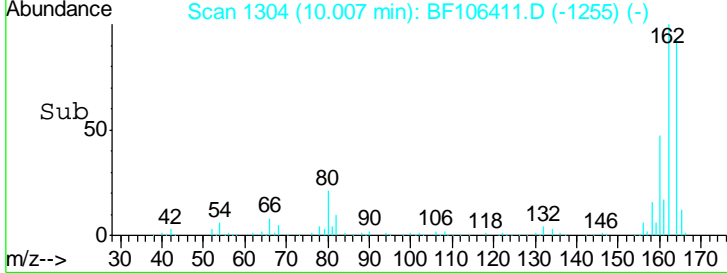
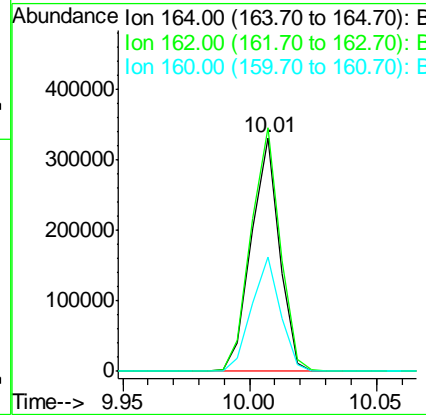
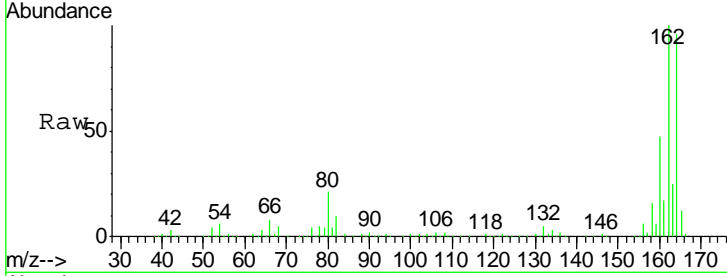




#38
 Acenaphthene-d10
 Concen: 20.000 ng
 RT: 10.01 min Scan# 1304
 Delta R.T. -0.01 min
 Lab File: BF106411.D
 Acq: 14 Jun 2018 00:20

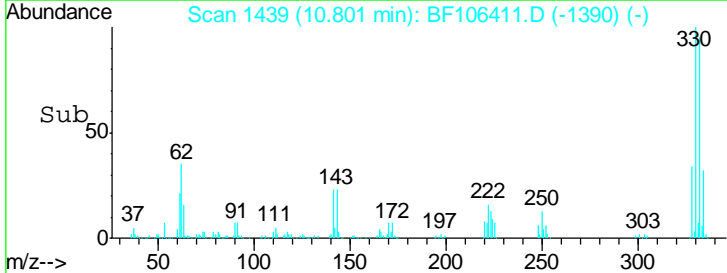
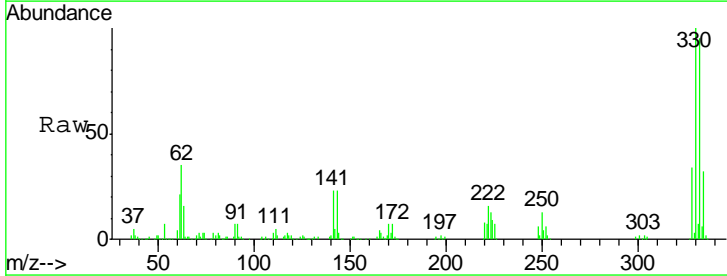
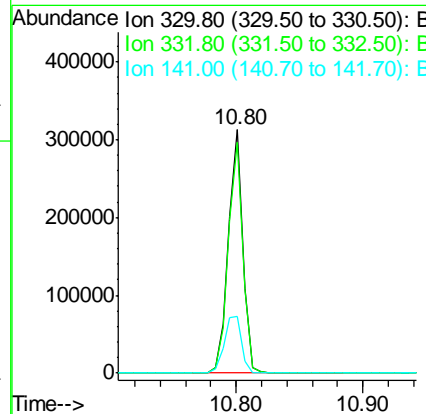
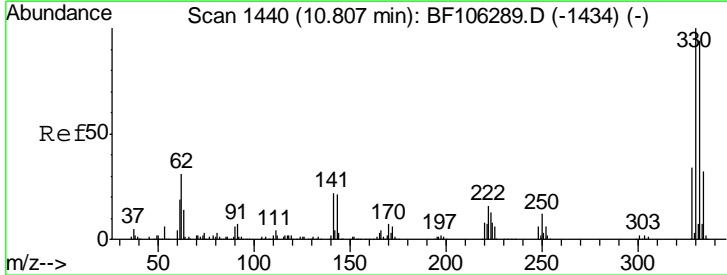
Instrument :
 BNA_F
ClientSampleId :
 EPE-105-5(10-12)

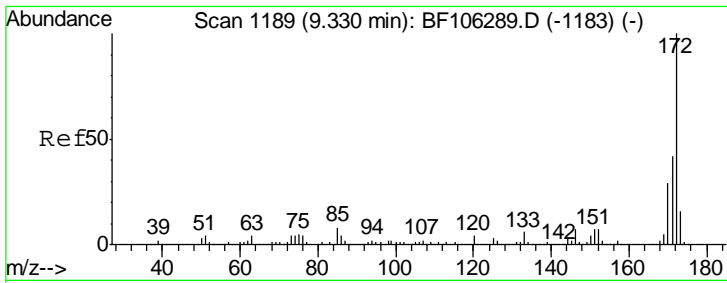
Tgt Ion	Resp	Lower	Upper
164	100		
162	104.2	86.1	129.1
160	49.1	38.3	57.5



#41
 2,4,6-Tribromophenol
 Concen: 101.297 ng
 RT: 10.80 min Scan# 1439
 Delta R.T. -0.01 min
 Lab File: BF106411.D
 Acq: 14 Jun 2018 00:20

Tgt Ion	Resp	Lower	Upper
330	100		
332	95.9	77.0	115.6
141	28.3	29.9	44.9#



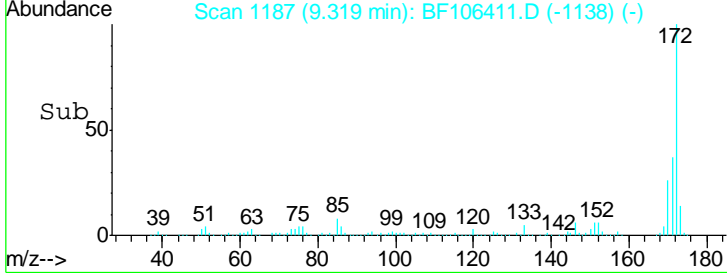
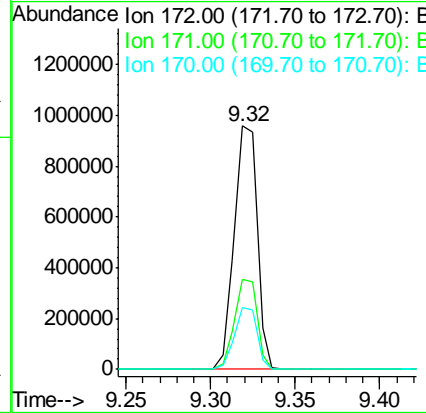
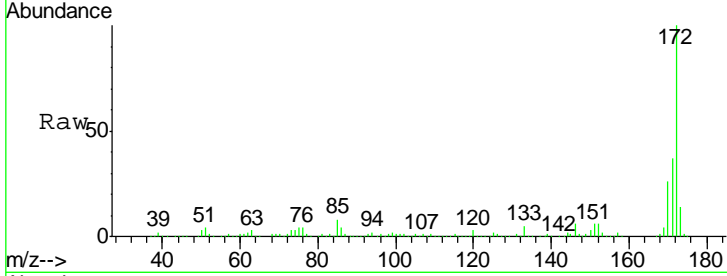


#44
 2-Fluorobiphenyl
 Concen: 55.247 ng
 RT: 9.32 min Scan# 1187
 Delta R.T. -0.01 min
 Lab File: BF106411.D
 Acq: 14 Jun 2018 00:20

Instrument :
 BNA_F
ClientSampled :
 EPE-105-5(10-12)

Tot Ion:172 Resp: 902763

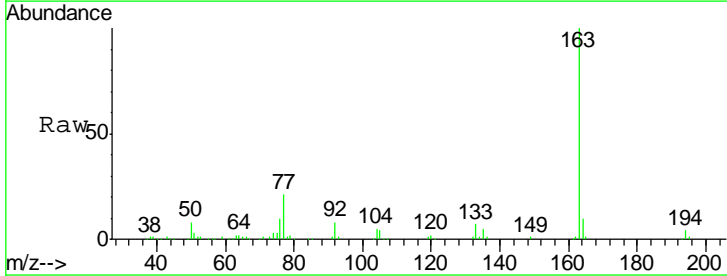
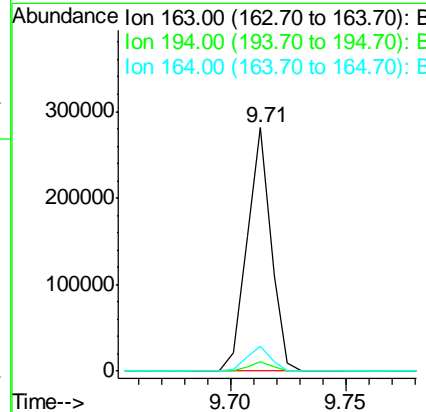
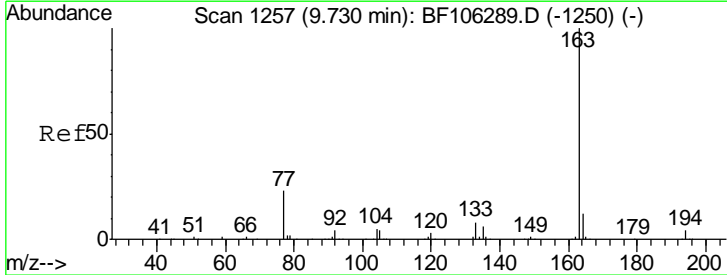
Ion	Ratio	Lower	Upper
172	100		
171	37.1	29.7	44.5
170	25.5	19.6	29.4

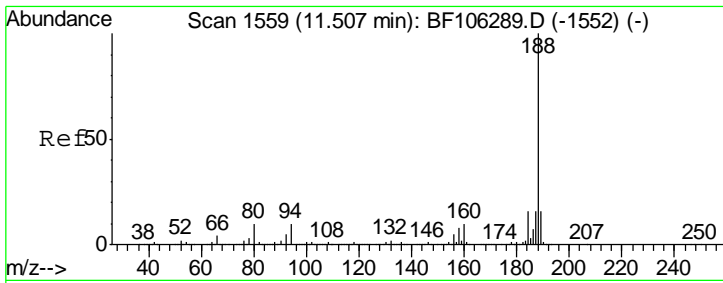


#49
 Dimethylphthalate
 Concen: 11.163 ng
 RT: 9.71 min Scan# 1254
 Delta R.T. -0.02 min
 Lab File: BF106411.D
 Acq: 14 Jun 2018 00:20

Tgt Ion:163 Resp: 204719

Ion	Ratio	Lower	Upper
163	100		
194	3.9	2.7	4.1
164	10.1	8.2	12.2

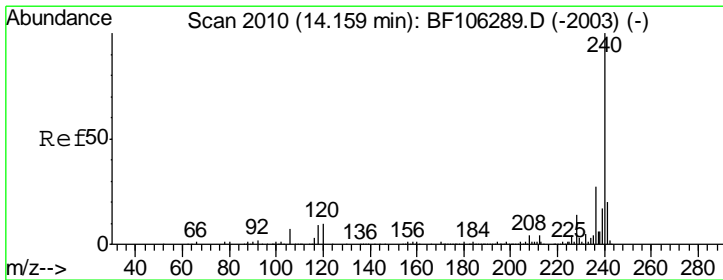
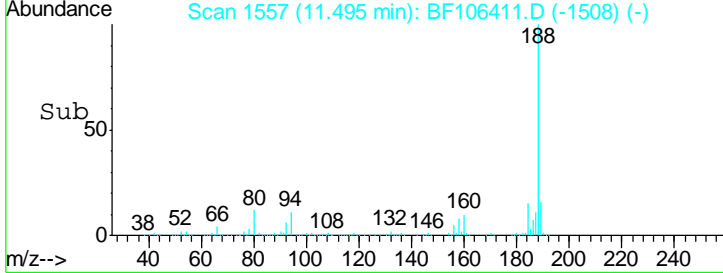
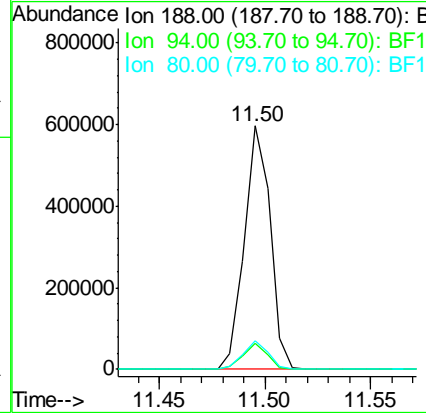
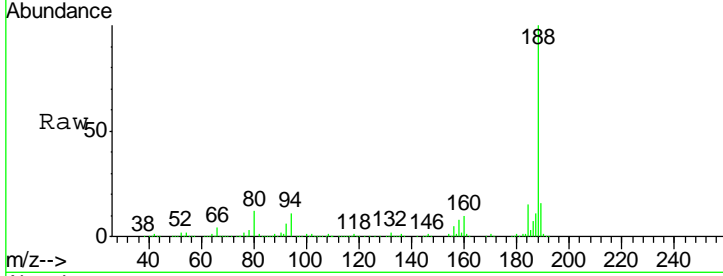




#63
 Phenanthrene-d10
 Concen: 20.000 ng
 RT: 11.50 min Scan# 1557
 Delta R.T. -0.01 min
 Lab File: BF106411.D
 Acq: 14 Jun 2018 00:20

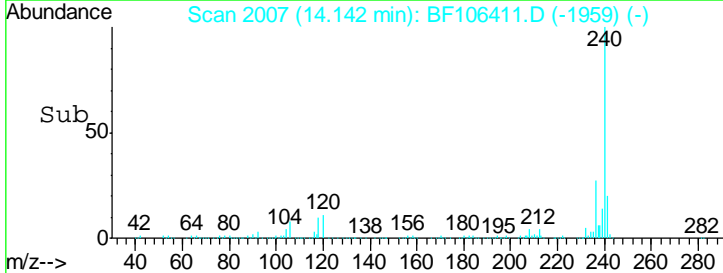
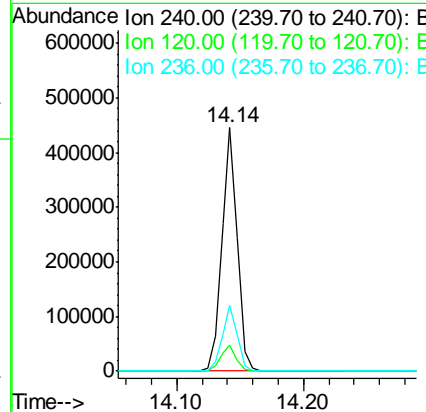
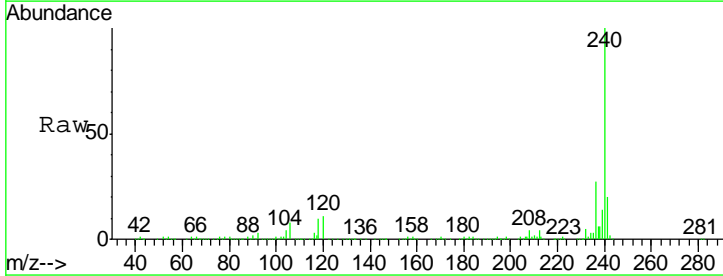
Instrument :
 BNA_F
 ClientSampleId :
 EPE-105-5(10-12)

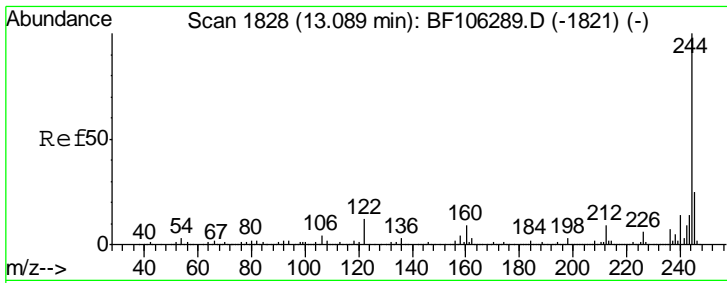
Tgt Ion	Resp	Lower	Upper
188	100		
94	10.7	8.5	12.7
80	11.5	9.2	13.8



#75
 Chrysene-d12
 Concen: 20.000 ng
 RT: 14.14 min Scan# 2007
 Delta R.T. -0.02 min
 Lab File: BF106411.D
 Acq: 14 Jun 2018 00:20

Tgt Ion	Resp	Lower	Upper
240	100		
120	10.9	9.5	14.3
236	27.0	20.7	31.1

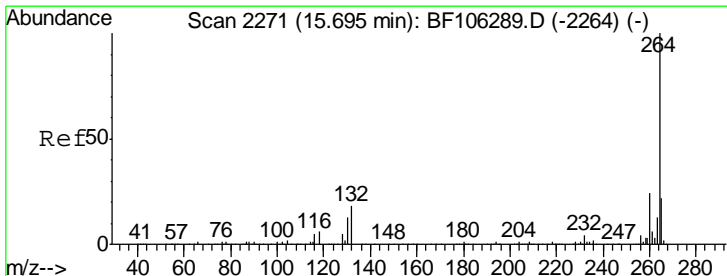
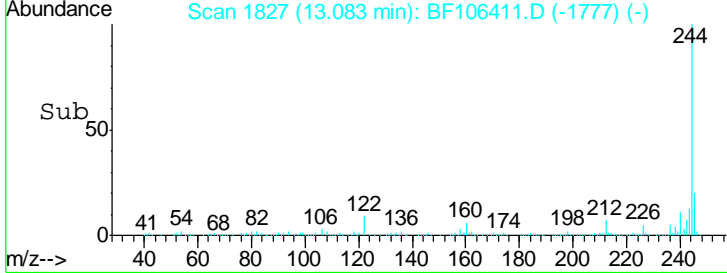
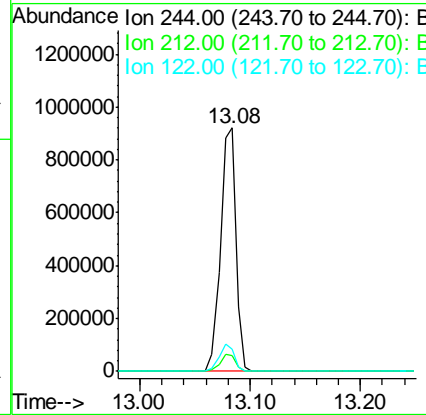
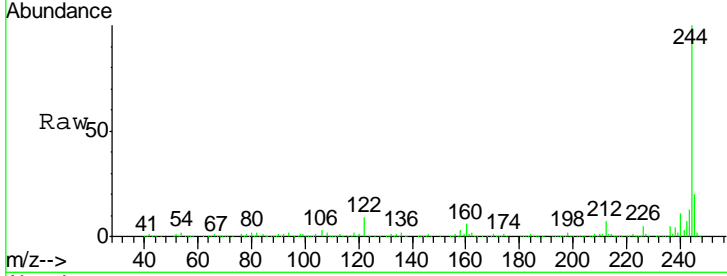




#78
 Terphenyl-d14
 Concen: 58.026 ng
 RT: 13.08 min Scan# 1827
 Delta R.T. -0.01 min
 Lab File: BF106411.D
 Acq: 14 Jun 2018 00:20

Instrument :
 BNA_F
 ClientSampleId :
 EPE-105-5(10-12)

Tgt Ion	Resp	Lower	Upper
244	100		
212	6.6	5.4	8.0
122	9.2	11.0	16.4



#86
 Perylene-d12
 Concen: 20.000 ng
 RT: 15.67 min Scan# 2267
 Delta R.T. -0.02 min
 Lab File: BF106411.D
 Acq: 14 Jun 2018 00:20

Tgt Ion	Resp	Lower	Upper
264	100		
260	25.3	19.2	28.8
265	22.1	17.5	26.3

