

Data Path : Z:\SVOASRV\HPCHEM1\BNA F\DATA\BF061319\
 Data File : BF115009.D
 Acq On : 13 Jun 2019 18:44
 Operator : HP/JU
 Sample : K3345-04
 Misc :
 ALS Vial : 5 Sample Multiplier: 1

Instrument :
 BNA_F
 ClientSampleId :
 C-MW-11_061119

Quant Time: Jun 14 04:11:06 2019
 Quant Method : Z:\SVOASRV\HPCHEM1\BNA F\METHODS\8270-BF061219.M
 Quant Title : ASP BNA STANDARDS FOR 5 POINT CALIBRATION
 QLast Update : Wed Jun 12 15:42:37 2019
 Response via : Initial Calibration

Internal Standards	R.T.	QIon	Response	Conc	Units	Dev(Min)
1) 1,4-Dichlorobenzene-d4	6.65	152	291865	20.00	ng	0.00
21) Naphthalene-d8	7.93	136	1118758	20.00	ng	0.00
39) Acenaphthene-d10	9.67	164	543678	20.00	ng	0.00
64) Phenanthrene-d10	11.15	188	1030136	20.00	ng	-0.01
76) Chrysene-d12	13.77	240	676629	20.00	ng	-0.01
87) Perylene-d12	15.14	264	609912	20.00	ng	0.00
System Monitoring Compounds						
5) 2-Fluorophenol	5.25	112	970224	55.51	ng	0.00
7) Phenol-d6	6.28	99	796888	37.79	ng	-0.02
23) Nitrobenzene-d5	7.21	82	1553988	83.61	ng	0.00
42) 2,4,6-Tribromophenol	10.46	330	647287	111.18	ng	0.00
45) 2-Fluorobiphenyl	9.00	172	2821657	87.96	ng	0.00
79) Terphenyl-d14	12.73	244	2922566	81.24	ng	0.00

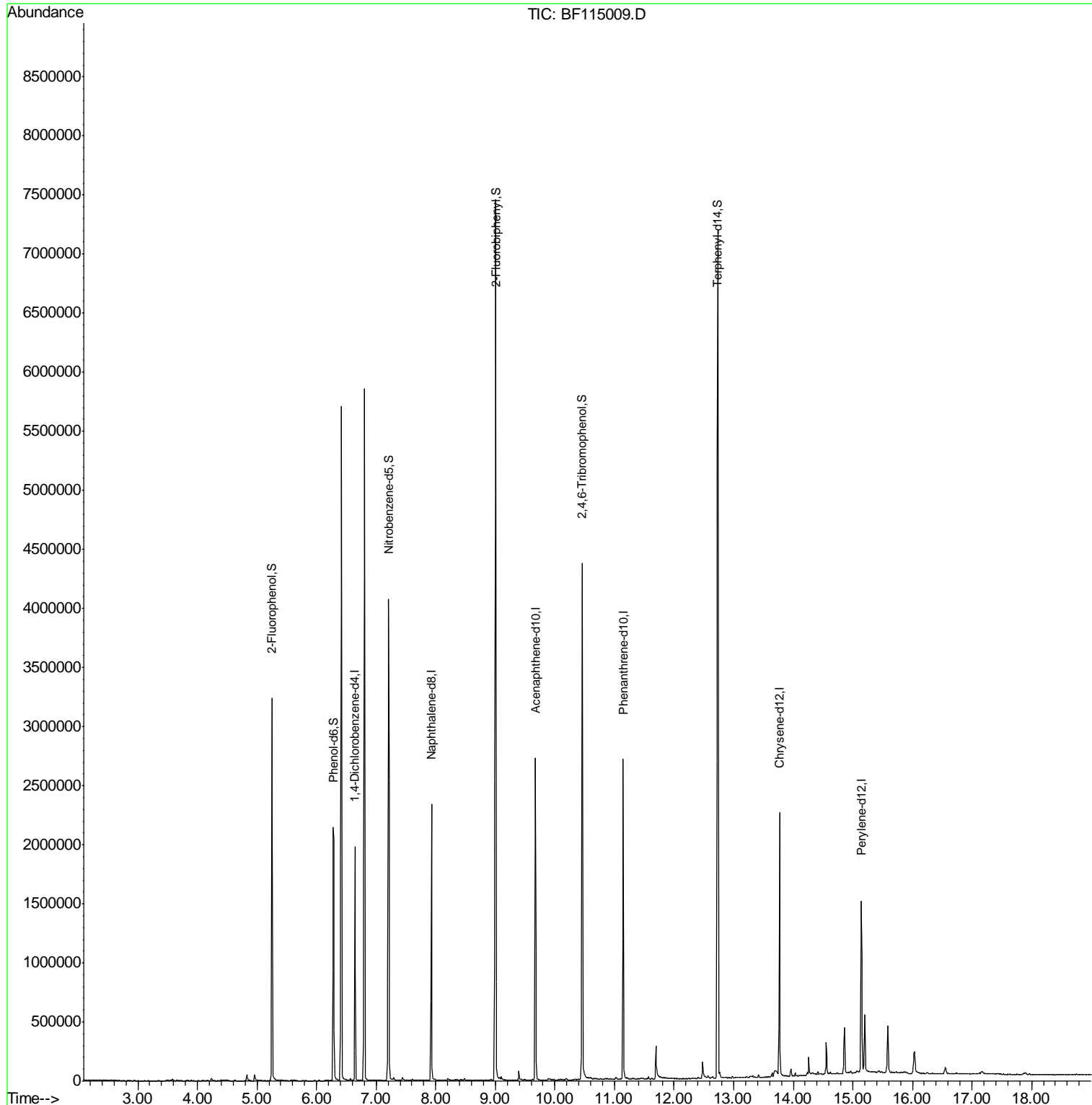
Target Compounds Qvalue

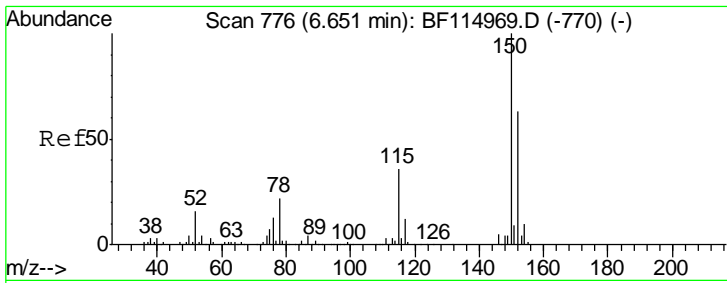
(#) = qualifier out of range (m) = manual integration (+) = signals summed

Data Path : Z:\SVOASRV\HPCHEM1\BNA F\DATA\BF061319\
Data File : BF115009.D
Acq On : 13 Jun 2019 18:44
Operator : HP/JU
Sample : K3345-04
Misc :
ALS Vial : 5 Sample Multiplier: 1

Instrument :
BNA_F
ClientSampleId :
C-MW-11_061119

Quant Time: Jun 14 04:11:06 2019
Quant Method : Z:\SVOASRV\HPCHEM1\BNA F\METHODS\8270-BF061219.M
Quant Title : ASP BNA STANDARDS FOR 5 POINT CALIBRATION
QLast Update : Wed Jun 12 15:42:37 2019
Response via : Initial Calibration

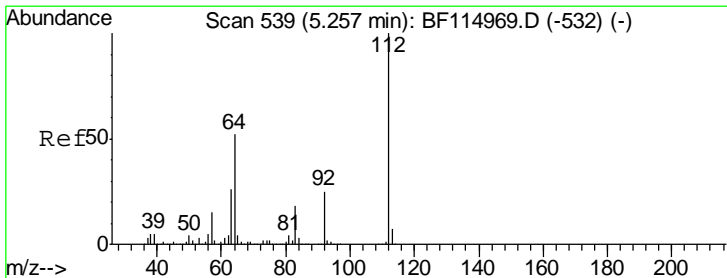
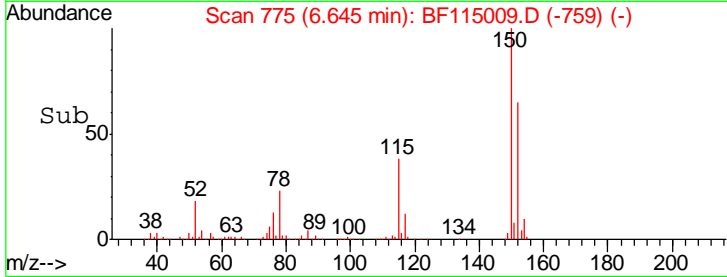
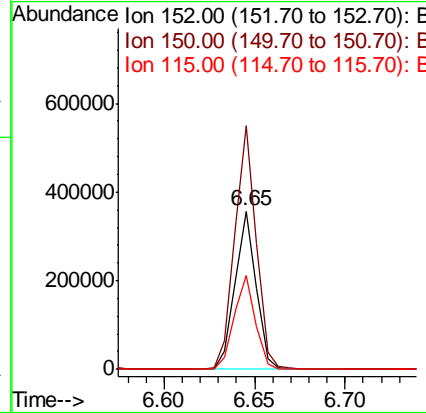
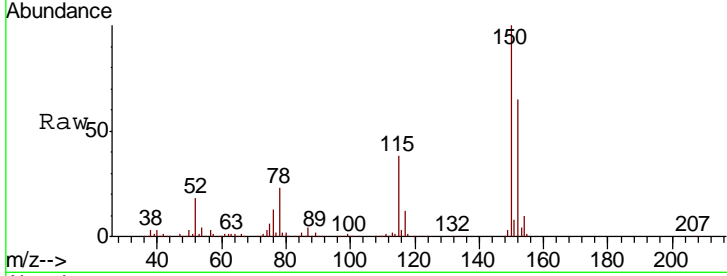




#1
 1,4-Dichlorobenzene-d4
 Concen: 20.000 ng
 RT: 6.65 min Scan# 775
 Delta R.T. -0.01 min
 Lab File: BF115009.D
 Acq: 13 Jun 2019 18:44

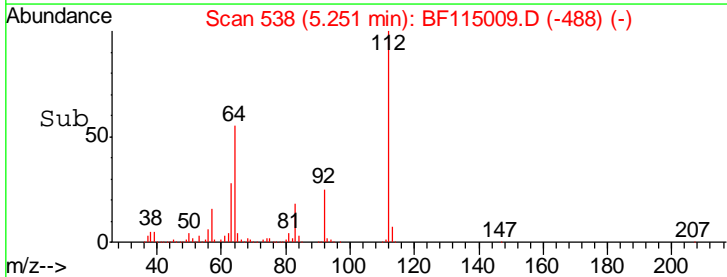
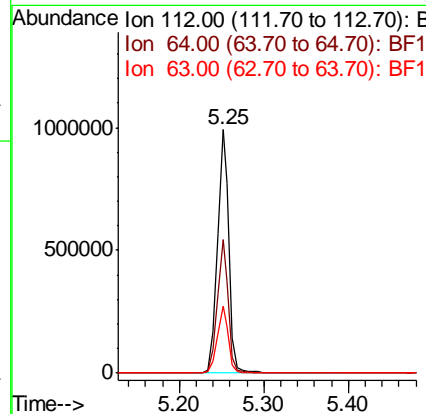
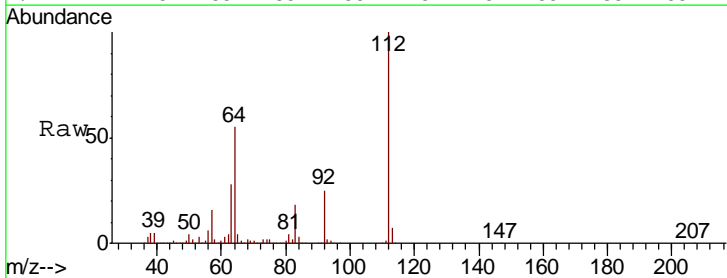
Instrument :
 BNA_F
 ClientSampleId :
 C-MW-11_061119

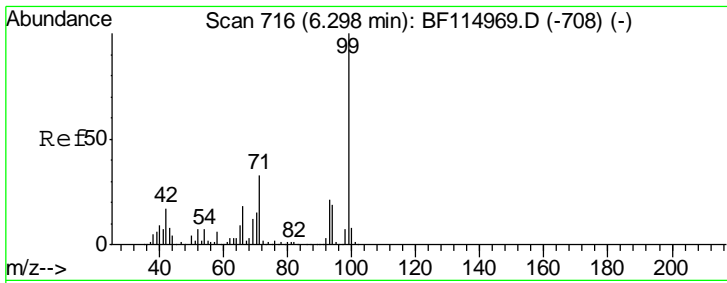
Tgt Ion	Resp	Lower	Upper
152	100		
150	153.7	127.4	191.0
115	59.0	46.0	69.0



#5
 2-Fluorophenol
 Concen: 55.507 ng
 RT: 5.25 min Scan# 538
 Delta R.T. -0.01 min
 Lab File: BF115009.D
 Acq: 13 Jun 2019 18:44

Tgt Ion	Resp	Lower	Upper
112	100		
64	54.8	41.6	62.4
63	27.6	20.9	31.3

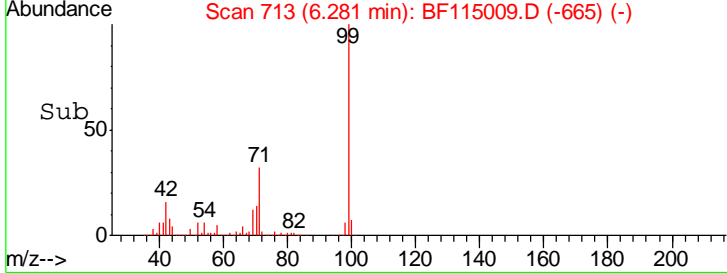
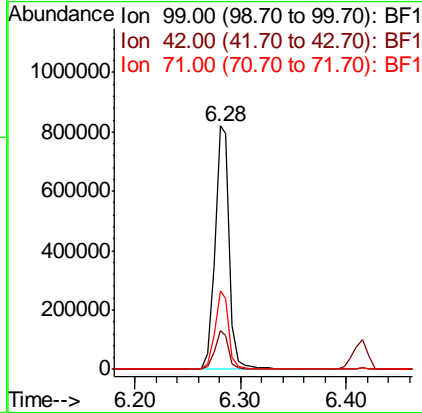
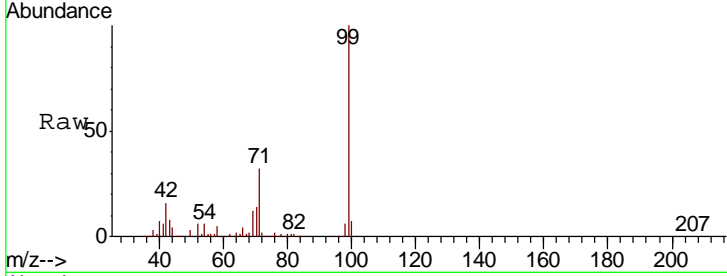




#7
 Phenol-d6
 Concen: 37.794 ng
 RT: 6.28 min Scan# 713
 Delta R.T. -0.02 min
 Lab File: BF115009.D
 Acq: 13 Jun 2019 18:44

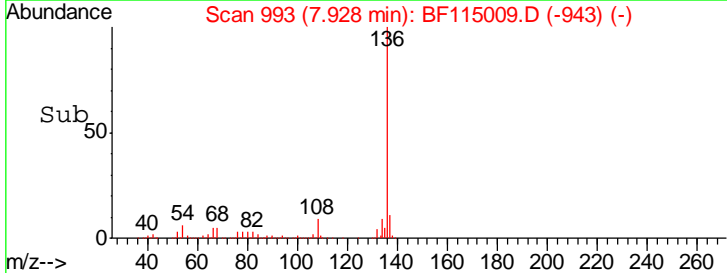
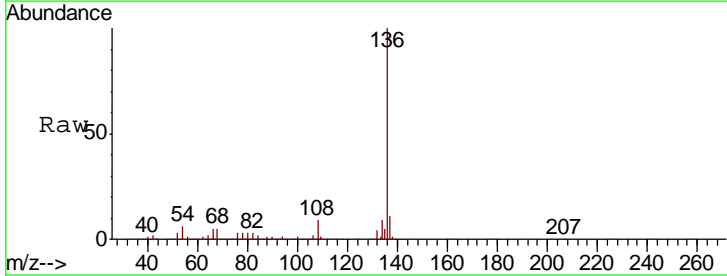
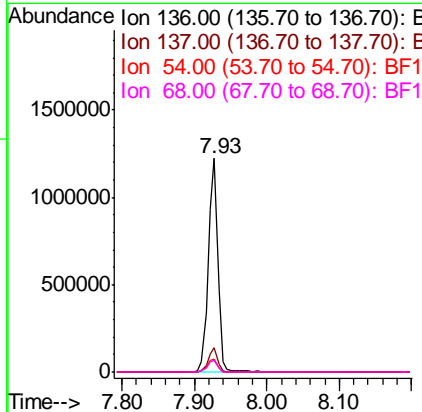
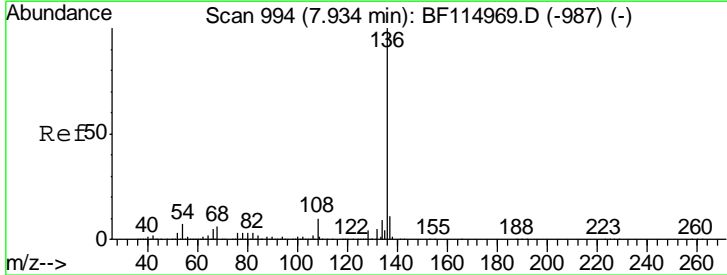
Instrument :
 BNA_F
ClientSampled :
 C-MW-11_061119

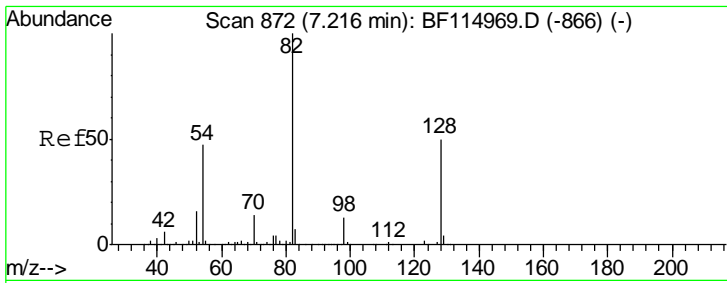
Tgt Ion	Resp	Lower	Upper
99	796888		
42	16.0	13.4	20.2
71	32.0	26.4	39.6



#21
 Naphthalene-d8
 Concen: 20.000 ng
 RT: 7.93 min Scan# 993
 Delta R.T. -0.01 min
 Lab File: BF115009.D
 Acq: 13 Jun 2019 18:44

Tgt Ion	Resp	Lower	Upper
136	1118758		
137	11.1	9.0	13.4
54	6.1	5.4	8.0
68	5.5	4.6	7.0

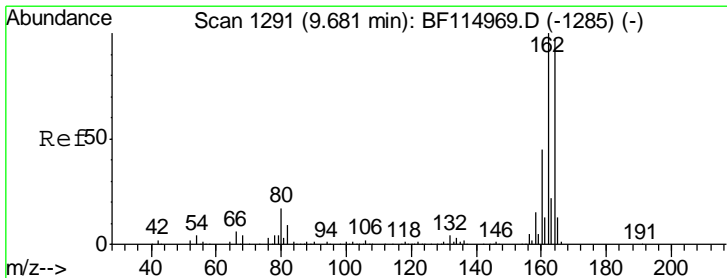
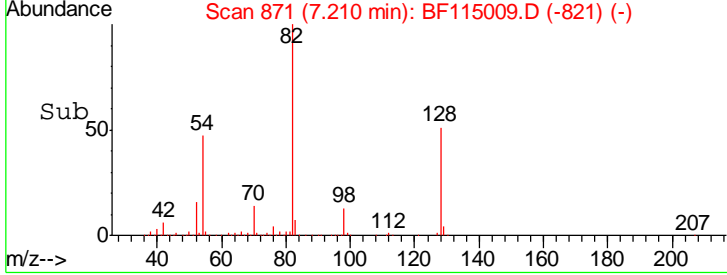
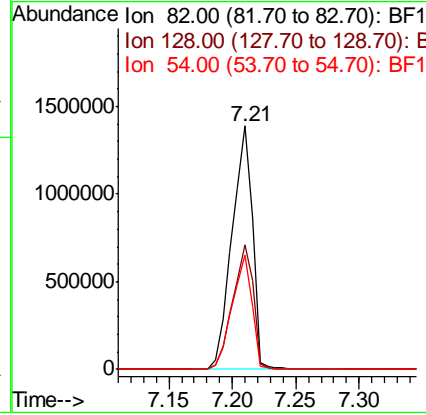
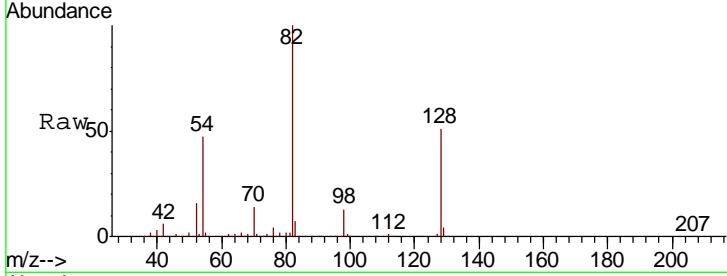




#23
 Nitrobenzene-d5
 Concen: 83.609 ng
 RT: 7.21 min Scan# 871
 Delta R.T. -0.01 min
 Lab File: BF115009.D
 Acq: 13 Jun 2019 18:44

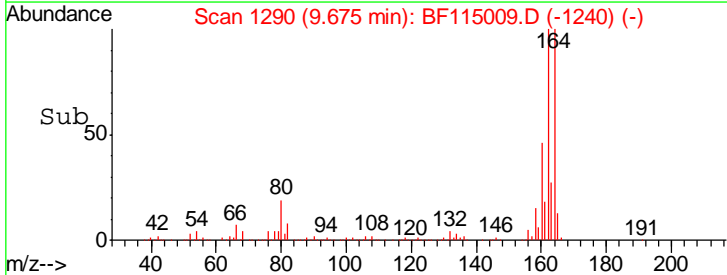
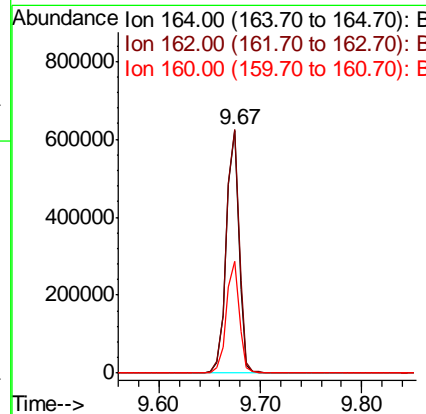
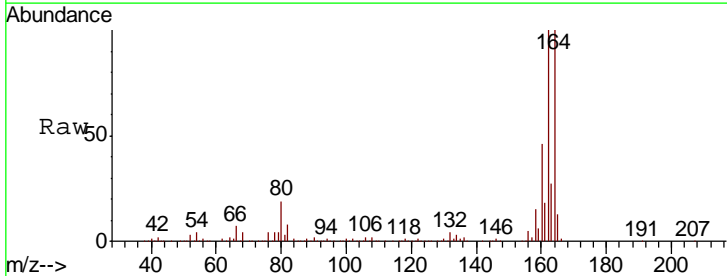
Instrument :
 BNA_F
ClientSampleId :
 C-MW-11_061119

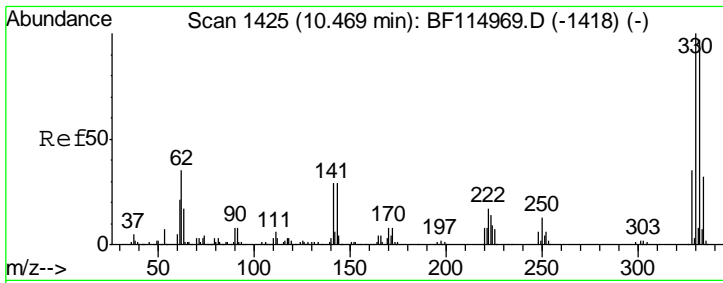
Tgt Ion	Resp	Lower	Upper
82	1553988		
128	51.3	39.9	59.9
54	47.1	37.3	55.9



#39
 Acenaphthene-d10
 Concen: 20.000 ng
 RT: 9.67 min Scan# 1290
 Delta R.T. -0.01 min
 Lab File: BF115009.D
 Acq: 13 Jun 2019 18:44

Tgt Ion	Resp	Lower	Upper
164	543678		
162	100.4	82.6	124.0
160	45.9	36.9	55.3

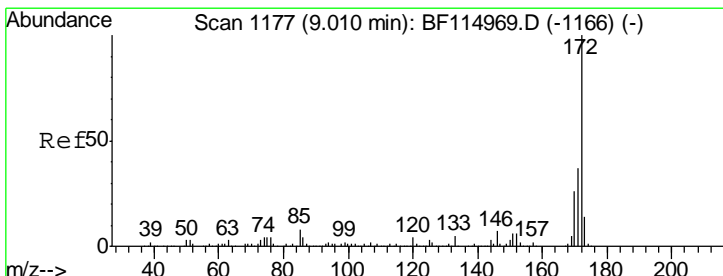
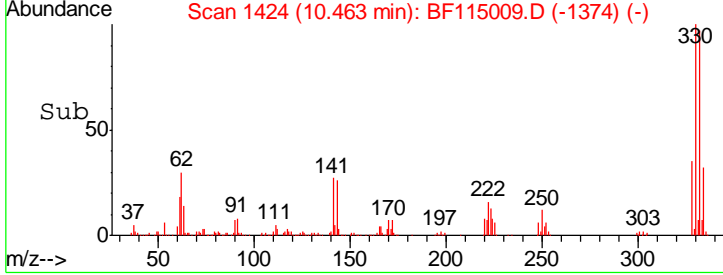
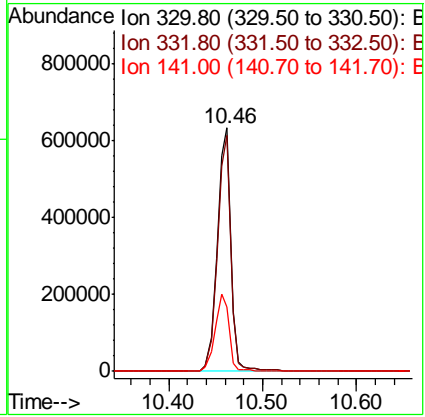
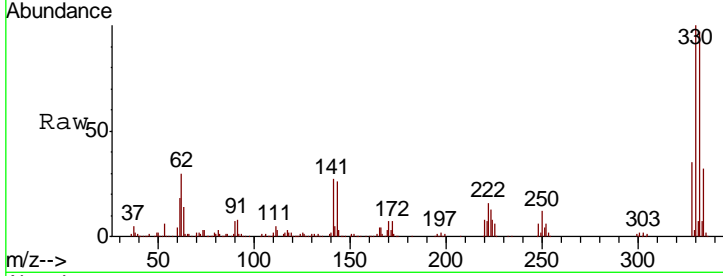




#42
 2,4,6-Tribromophenol
 Concen: 111.179 ng
 RT: 10.46 min Scan# 1424
 Delta R.T. -0.01 min
 Lab File: BF115009.D
 Acq: 13 Jun 2019 18:44

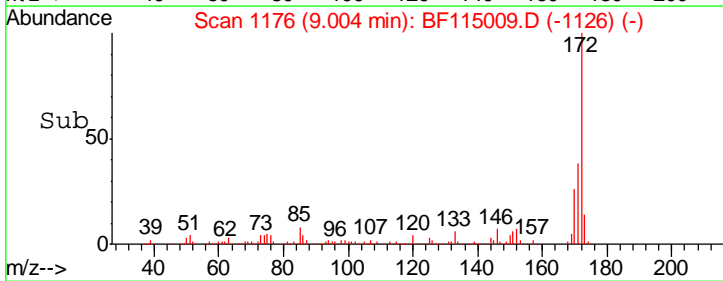
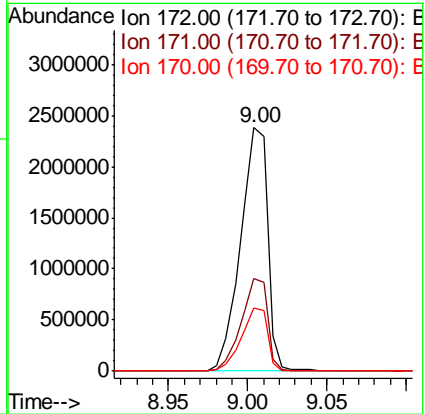
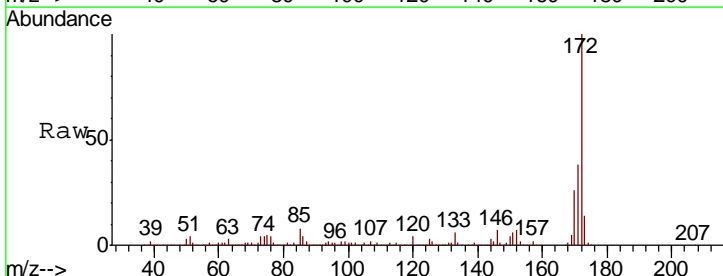
Instrument :
 BNA_F
 ClientSampled :
 C-MW-11_061119

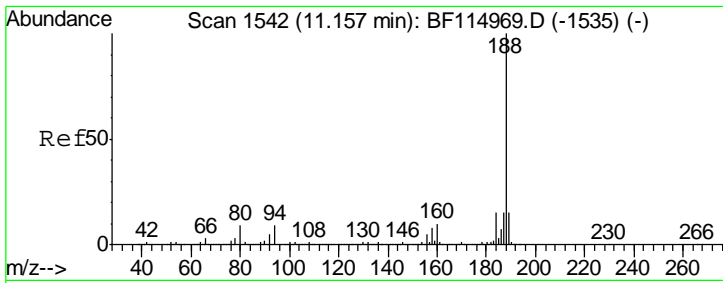
Tgt Ion	Resp	Lower	Upper
330	100		
332	96.6	77.6	116.4
141	33.4	27.2	40.8



#45
 2-Fluorobiphenyl
 Concen: 87.961 ng
 RT: 9.00 min Scan# 1176
 Delta R.T. -0.01 min
 Lab File: BF115009.D
 Acq: 13 Jun 2019 18:44

Tgt Ion	Resp	Lower	Upper
172	100		
171	38.2	29.8	44.6
170	25.8	20.6	31.0



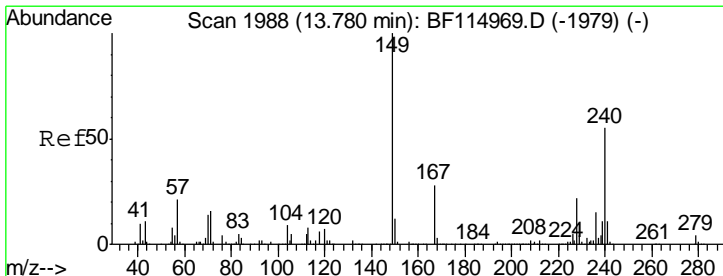
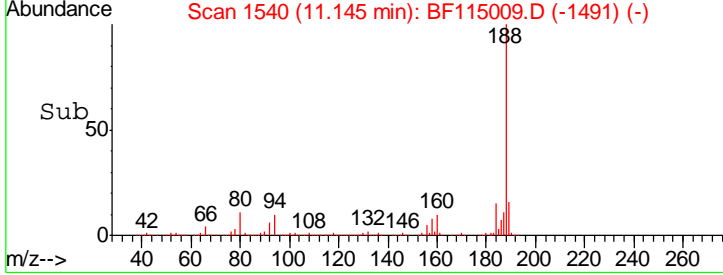
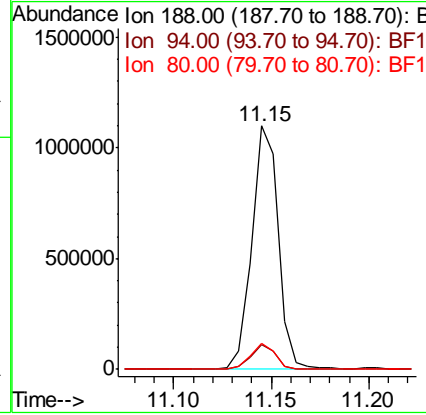
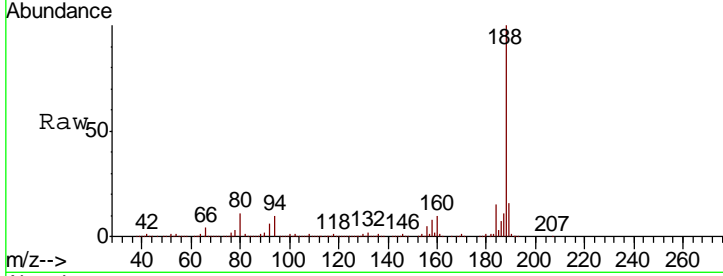


#64
 Phenanthrene-d10
 Concen: 20.000 ng
 RT: 11.15 min Scan# 1540
 Delta R.T. -0.01 min
 Lab File: BF115009.D
 Acq: 13 Jun 2019 18:44

Instrument :
 BNA_F
 ClientSampleId :
 C-MW-11_061119

Tgt Ion: 188 Resp: 1030136

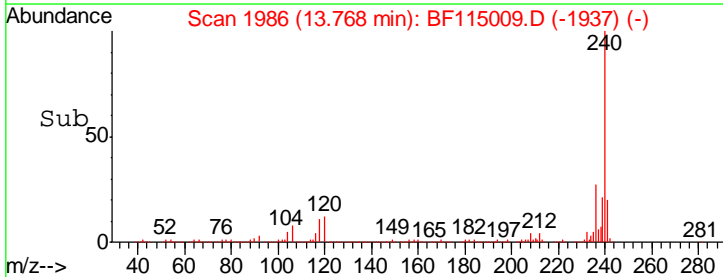
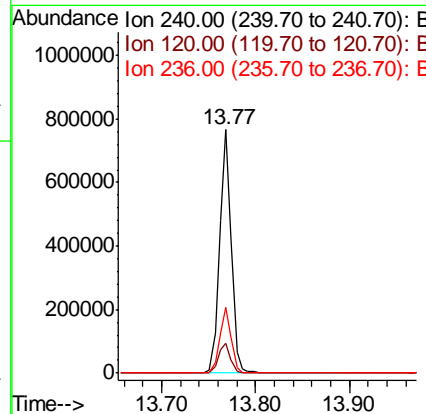
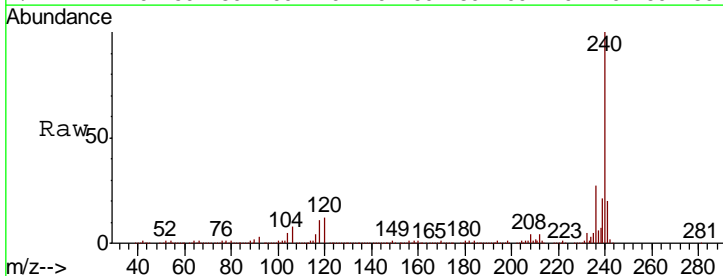
Ion	Ratio	Lower	Upper
188	100		
94	10.3	7.2	10.8
80	10.7	7.4	11.2

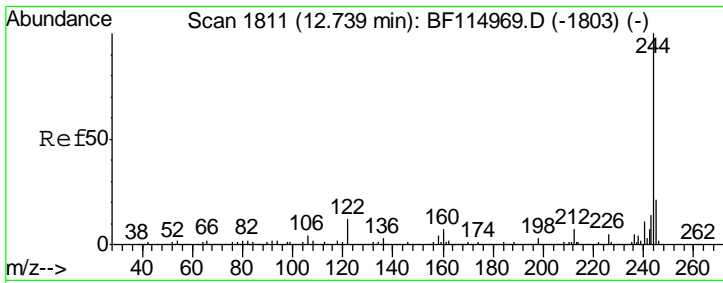


#76
 Chrysene-d12
 Concen: 20.000 ng
 RT: 13.77 min Scan# 1986
 Delta R.T. -0.01 min
 Lab File: BF115009.D
 Acq: 13 Jun 2019 18:44

Tgt Ion: 240 Resp: 676629

Ion	Ratio	Lower	Upper
240	100		
120	12.4	10.0	15.0
236	26.9	21.6	32.4

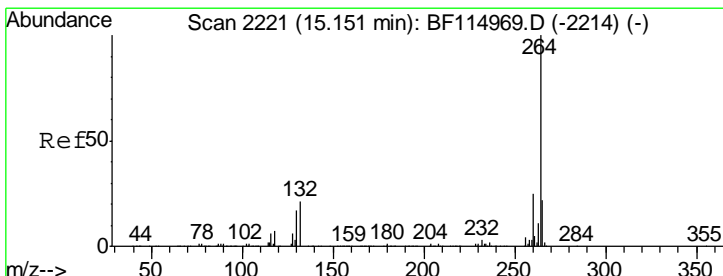
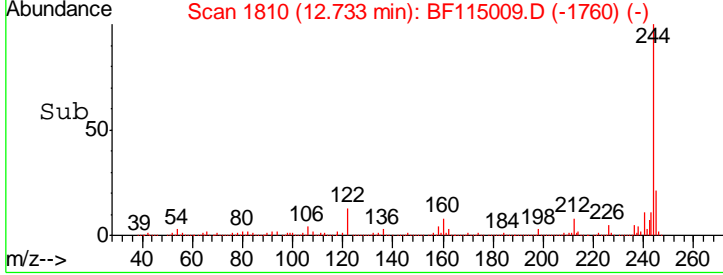
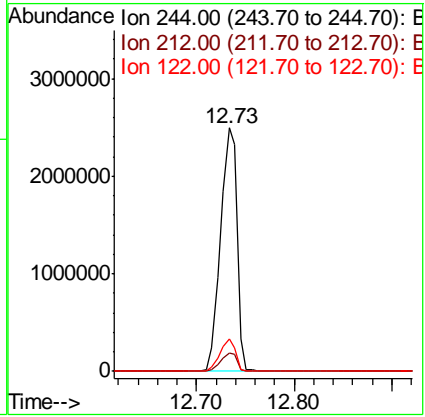
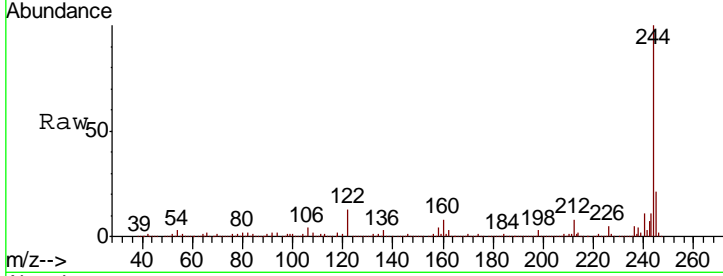




#79
 Terphenyl-d14
 Concen: 81.240 ng
 RT: 12.73 min Scan# 1810
 Delta R.T. -0.01 min
 Lab File: BF115009.D
 Acq: 13 Jun 2019 18:44

Instrument :
 BNA_F
 ClientSampleId :
 C-MW-11_061119

Tgt Ion	Resp	Lower	Upper
244	100		
212	7.6	5.8	8.8
122	13.1	9.4	14.0



#87
 Perylene-d12
 Concen: 20.000 ng
 RT: 15.14 min Scan# 2220
 Delta R.T. -0.01 min
 Lab File: BF115009.D
 Acq: 13 Jun 2019 18:44

Tgt Ion	Resp	Lower	Upper
264	100		
260	24.5	19.9	29.9
265	21.7	17.6	26.4

