

Data Path : Z:\svoasrv\HPCHEM1\BNA_F\Data\BF061423\
 Data File : BF133747.D
 Acq On : 14 Jun 2023 12:05
 Operator : CG\JU
 Sample : PB153224TB
 Misc :
 ALS Vial : 5 Sample Multiplier: 1

Instrument :
 BNA_F
 ClientSampleId :
 PB153224TB

Quant Time: Jun 14 12:38:04 2023
 Quant Method : Z:\svoasrv\HPCHEM1\BNA_F\Methods\8270-BF060923.M
 Quant Title : ASP BNA STANDARDS FOR 5 POINT CALIBRATION
 QLast Update : Tue Jun 13 11:26:55 2023
 Response via : Initial Calibration

Compound	R.T.	QIon	Response	Conc	Units	Dev(Min)
Internal Standards						
1) 1,4-Dichlorobenzene-d4	6.834	152	126808	20.000	ng	0.00
21) Naphthalene-d8	8.116	136	500564	20.000	ng	0.00
39) Acenaphthene-d10	9.869	164	252147	20.000	ng	-0.01
64) Phenanthrene-d10	11.357	188	495722	20.000	ng	-0.01
76) Chrysene-d12	14.004	240	331586	20.000	ng	-0.01
86) Perylene-d12	15.463	264	248981	20.000	ng	-0.02
System Monitoring Compounds						
5) 2-Fluorophenol	5.457	112	859593	118.010	ng	0.01
7) Phenol-d6	6.463	99	1036312	109.300	ng	0.00
23) Nitrobenzene-d5	7.398	82	700217	76.191	ng	0.00
42) 2,4,6-Tribromophenol	10.663	330	324561	101.688	ng	0.00
45) 2-Fluorobiphenyl	9.192	172	1260108	71.040	ng	0.00
79) Terphenyl-d14	12.951	244	1469787	68.588	ng	0.00

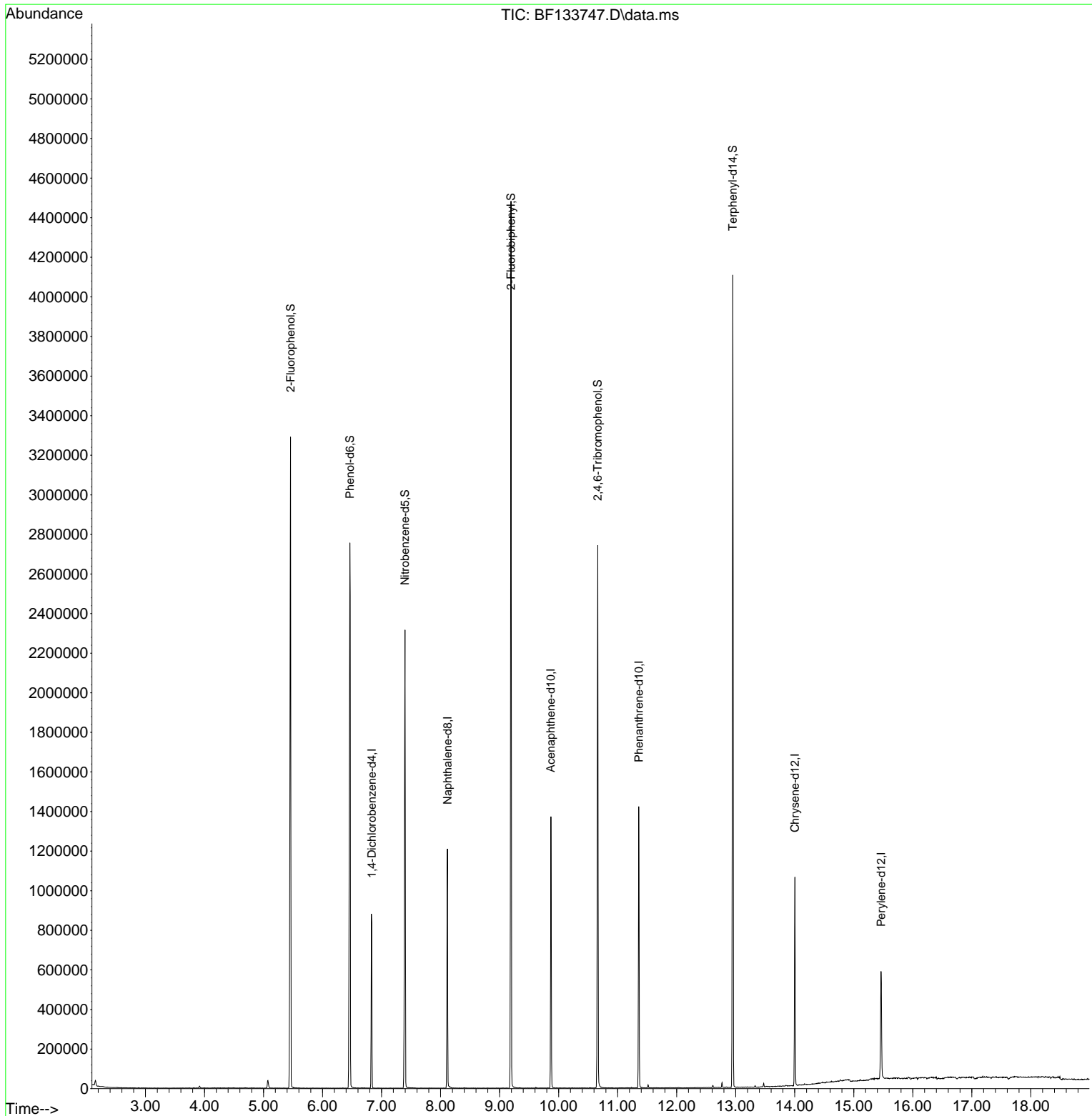
Target Compounds Qvalue

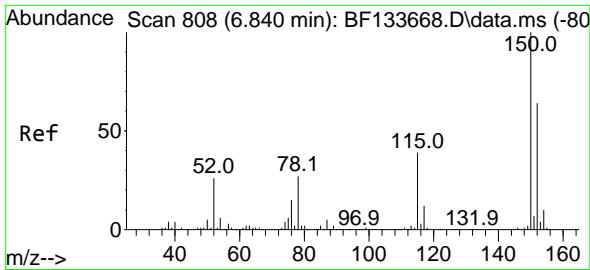
(#) = qualifier out of range (m) = manual integration (+) = signals summed

Data Path : Z:\svoasrv\HPCHEM1\BNA_F\Data\BF061423\
 Data File : BF133747.D
 Acq On : 14 Jun 2023 12:05
 Operator : CG\JU
 Sample : PB153224TB
 Misc :
 ALS Vial : 5 Sample Multiplier: 1

Instrument :
 BNA_F
 ClientSampleId :
 PB153224TB

Quant Time: Jun 14 12:38:04 2023
 Quant Method : Z:\svoasrv\HPCHEM1\BNA_F\Methods\8270-BF060923.M
 Quant Title : ASP BNA STANDARDS FOR 5 POINT CALIBRATION
 QLast Update : Tue Jun 13 11:26:55 2023
 Response via : Initial Calibration

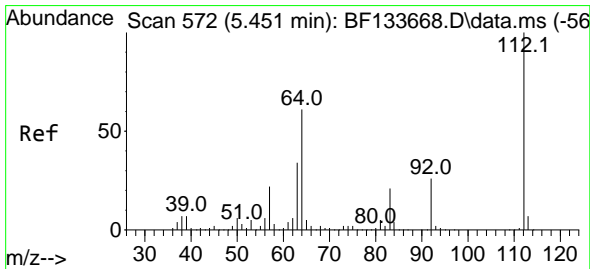
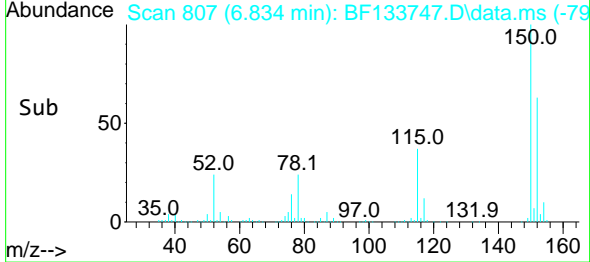
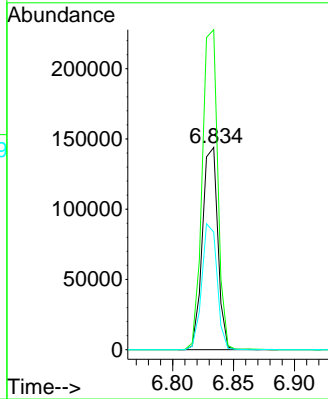
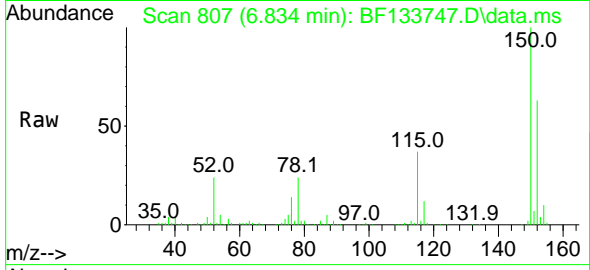




#1
 1,4-Dichlorobenzene-d4
 Concen: 20.000 ng
 RT: 6.834 min Scan# 80
 Delta R.T. -0.000 min
 Lab File: BF133747.D
 Acq: 14 Jun 2023 12:05

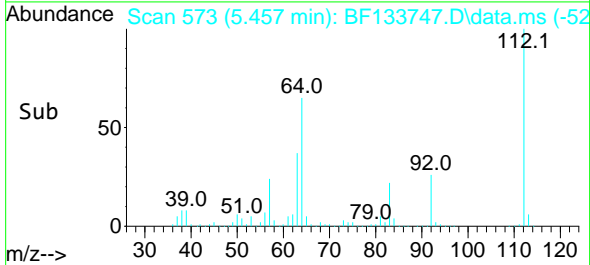
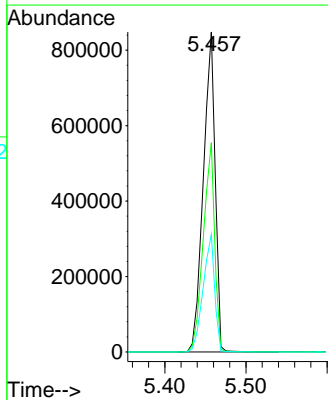
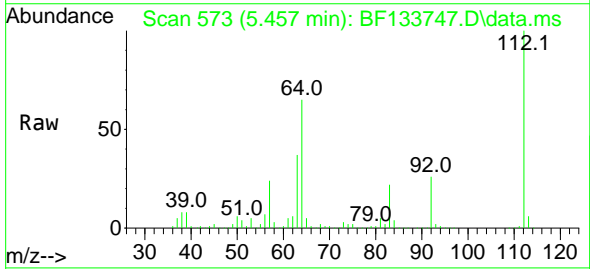
Instrument :
 BNA_F
 ClientSampleId :
 PB153224TB

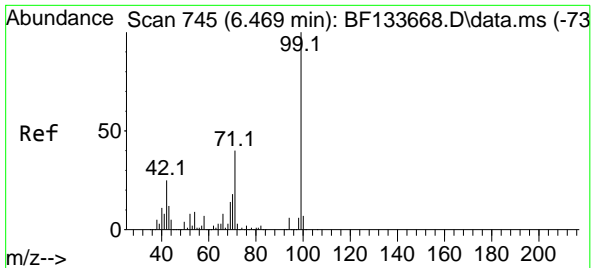
Tgt Ion:152 Resp: 126808
 Ion Ratio Lower Upper
 152 100
 150 158.2 124.3 186.5
 115 58.2 48.5 72.7



#5
 2-Fluorophenol
 Concen: 118.010 ng
 RT: 5.457 min Scan# 573
 Delta R.T. 0.012 min
 Lab File: BF133747.D
 Acq: 14 Jun 2023 12:05

Tgt Ion:112 Resp: 859593
 Ion Ratio Lower Upper
 112 100
 64 65.4 49.0 73.4
 63 36.7 26.8 40.2



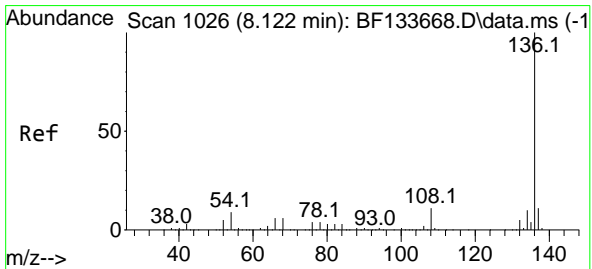
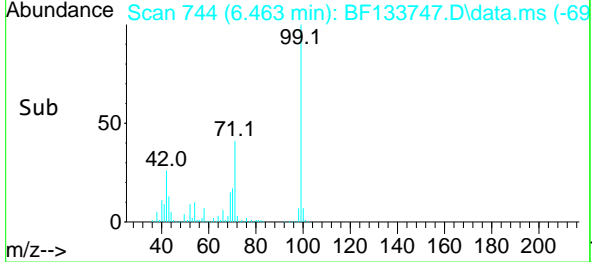
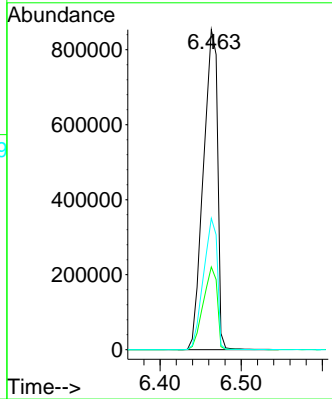
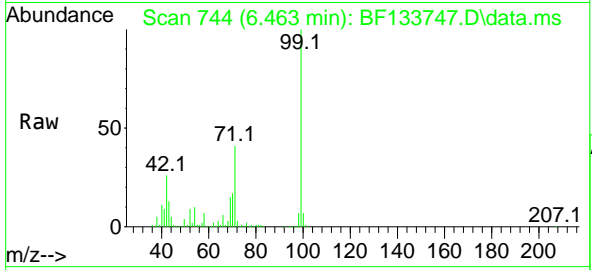


#7
 Phenol-d6
 Concen: 109.300 ng
 RT: 6.463 min Scan# 74
 Delta R.T. -0.006 min
 Lab File: BF133747.D
 Acq: 14 Jun 2023 12:05

Instrument : BNA_F
 ClientSampleId : PB153224TB

Tgt Ion: 99 Resp: 1036312

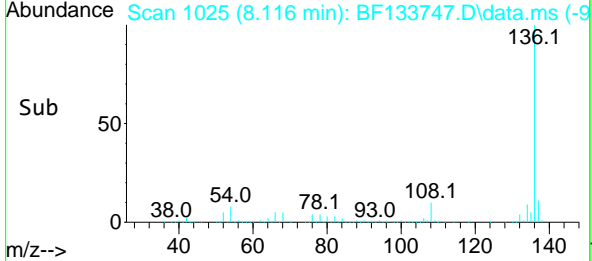
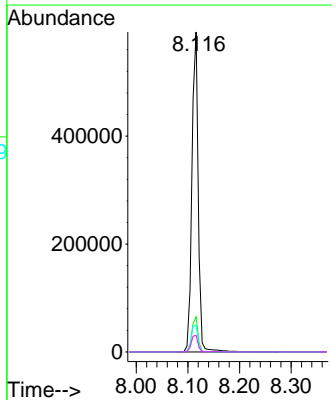
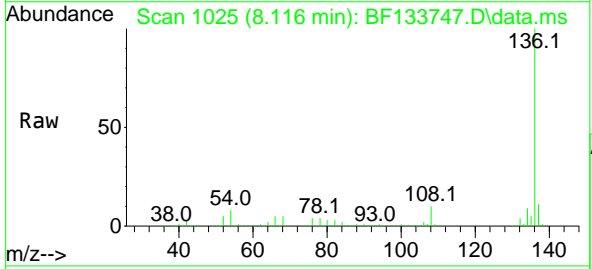
Ion	Ratio	Lower	Upper
99	100		
42	25.9	19.9	29.9
71	41.1	32.2	48.4

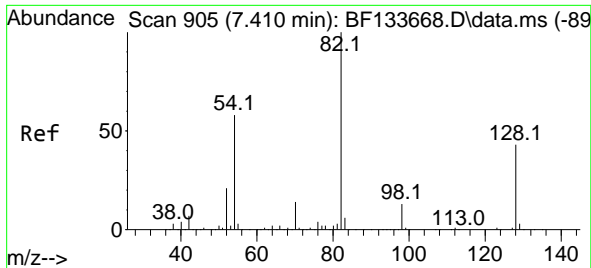


#21
 Naphthalene-d8
 Concen: 20.000 ng
 RT: 8.116 min Scan# 1025
 Delta R.T. -0.006 min
 Lab File: BF133747.D
 Acq: 14 Jun 2023 12:05

Tgt Ion: 136 Resp: 500564

Ion	Ratio	Lower	Upper
136	100		
137	11.0	8.8	13.2
54	8.3	7.4	11.0
68	5.2	4.4	6.6



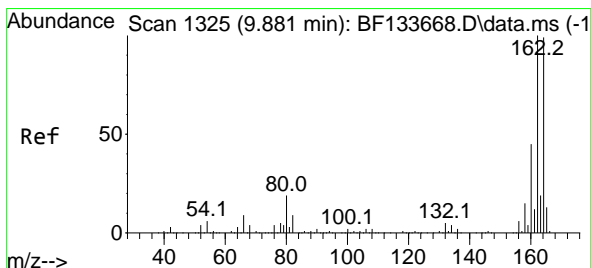
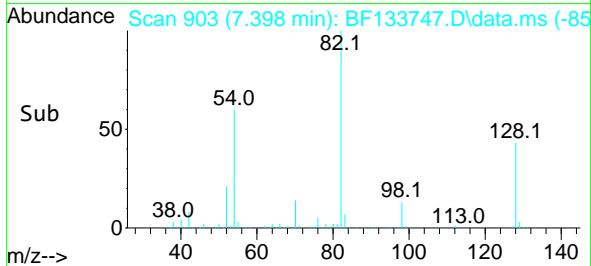
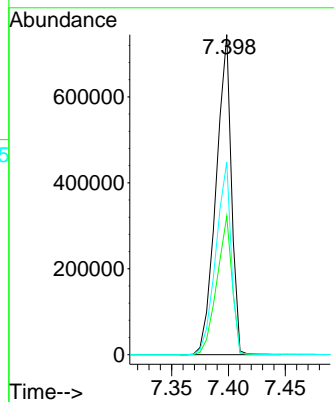
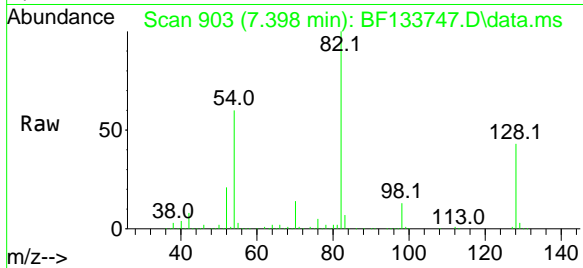


#23
 Nitrobenzene-d5
 Concen: 76.191 ng
 RT: 7.398 min Scan# 90
 Delta R.T. -0.006 min
 Lab File: BF133747.D
 Acq: 14 Jun 2023 12:05

Instrument :
 BNA_F
 ClientSampleId :
 PB153224TB

Tgt Ion: 82 Resp: 700217

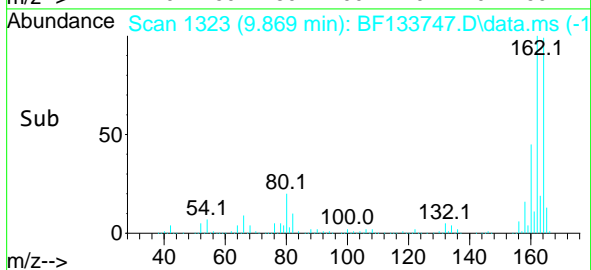
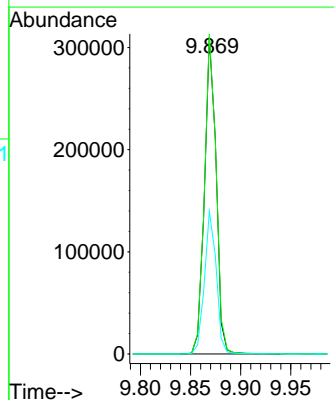
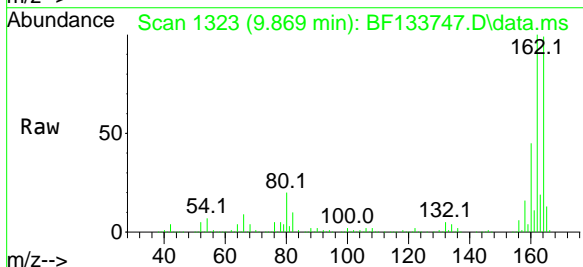
Ion	Ratio	Lower	Upper
82	100		
128	43.3	34.2	51.2
54	60.2	46.5	69.7

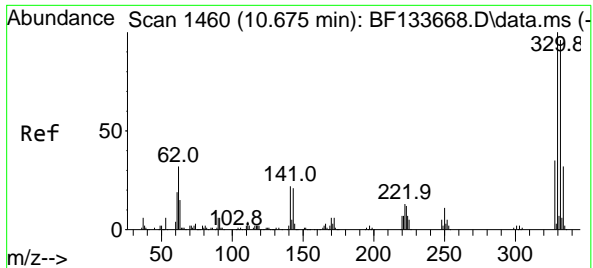


#39
 Acenaphthene-d10
 Concen: 20.000 ng
 RT: 9.869 min Scan# 1323
 Delta R.T. -0.012 min
 Lab File: BF133747.D
 Acq: 14 Jun 2023 12:05

Tgt Ion: 164 Resp: 252147

Ion	Ratio	Lower	Upper
164	100		
162	100.9	80.8	121.2
160	45.0	36.7	55.1



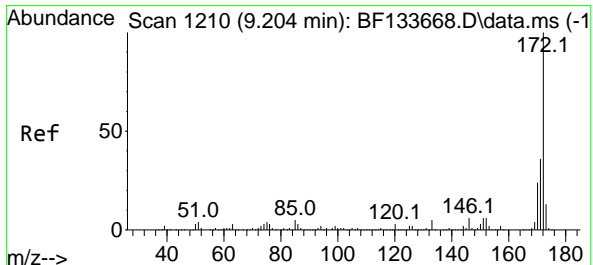
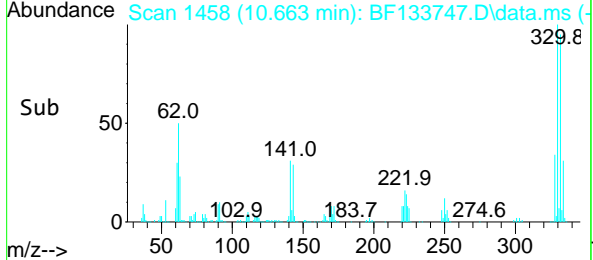
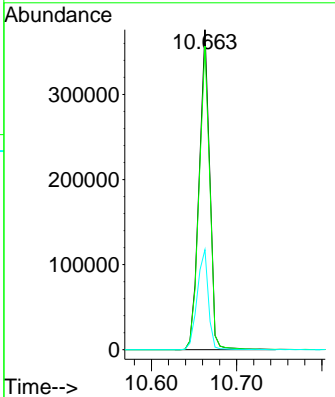
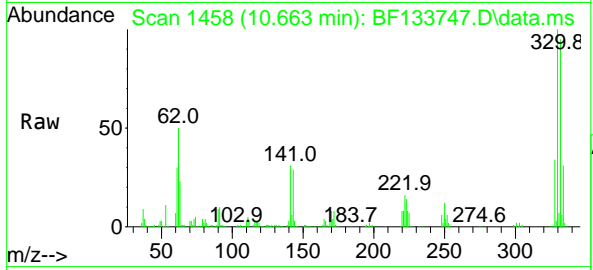


#42
 2,4,6-Tribromophenol
 Concen: 101.688 ng
 RT: 10.663 min Scan# 1460
 Delta R.T. -0.006 min
 Lab File: BF133747.D
 Acq: 14 Jun 2023 12:05

Instrument : BNA_F
 ClientSampleId : PB153224TB

Tgt Ion:330 Resp: 324561

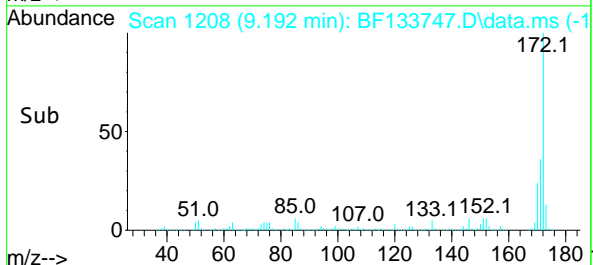
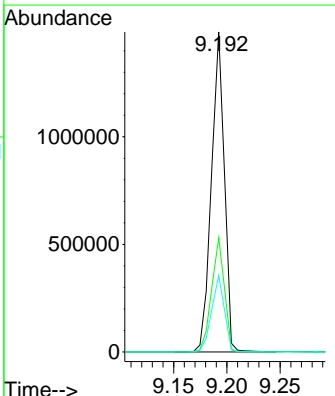
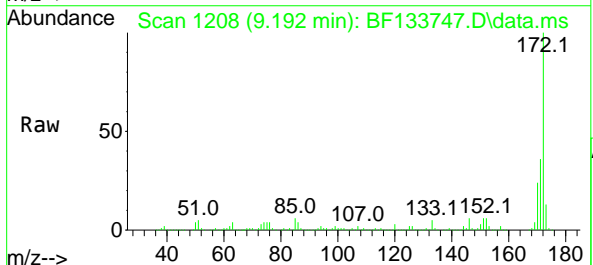
Ion	Ratio	Lower	Upper
330	100		
332	96.1	77.2	115.8
141	32.9	24.9	37.3

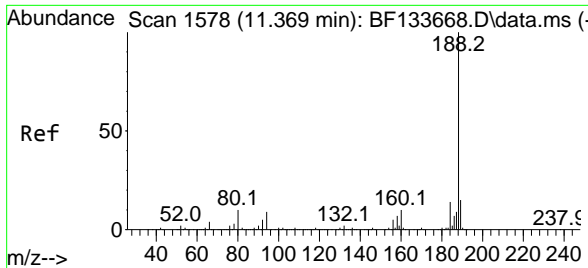


#45
 2-Fluorobiphenyl
 Concen: 71.040 ng
 RT: 9.192 min Scan# 1208
 Delta R.T. -0.006 min
 Lab File: BF133747.D
 Acq: 14 Jun 2023 12:05

Tgt Ion:172 Resp: 1260108

Ion	Ratio	Lower	Upper
172	100		
171	35.7	28.6	43.0
170	23.9	19.1	28.7



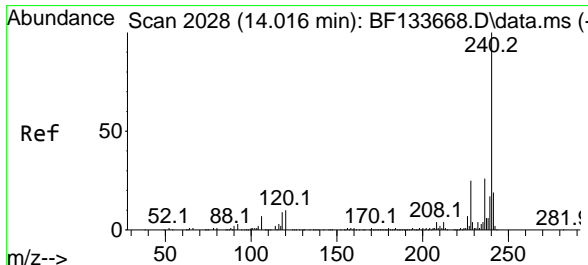
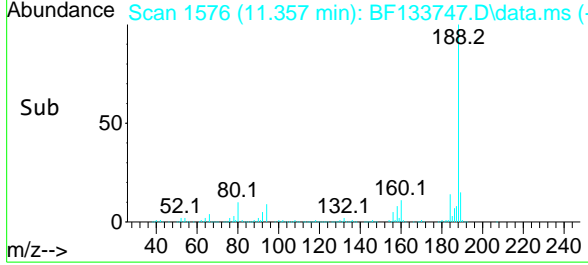
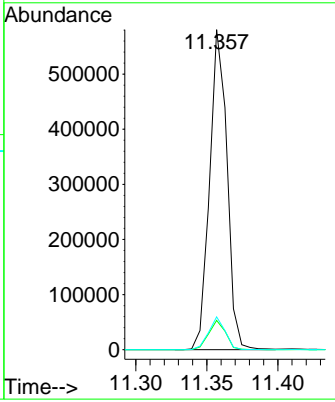
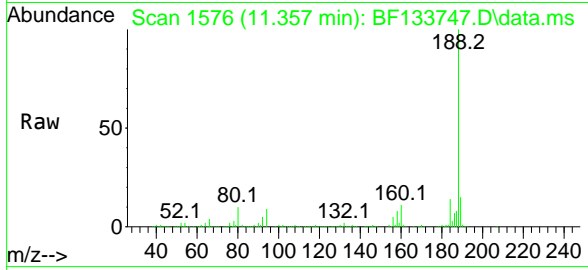


#64
 Phenanthrene-d10
 Concen: 20.000 ng
 RT: 11.357 min Scan# 11
 Delta R.T. -0.012 min
 Lab File: BF133747.D
 Acq: 14 Jun 2023 12:05

Instrument : BNA_F
 ClientSampleId : PB153224TB

Tgt Ion:188 Resp: 495722

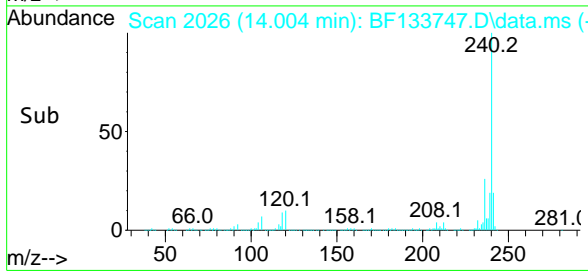
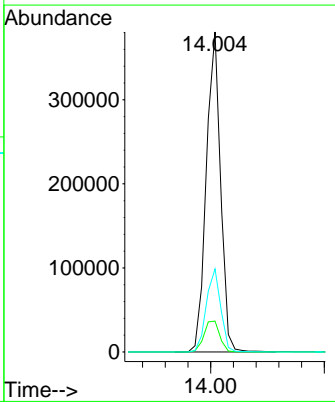
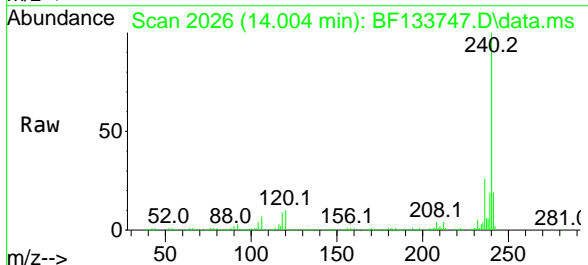
Ion	Ratio	Lower	Upper
188	100		
94	9.1	6.8	10.2
80	10.2	7.8	11.6

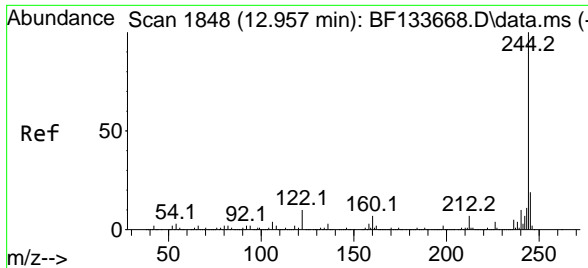


#76
 Chrysene-d12
 Concen: 20.000 ng
 RT: 14.004 min Scan# 2026
 Delta R.T. -0.012 min
 Lab File: BF133747.D
 Acq: 14 Jun 2023 12:05

Tgt Ion:240 Resp: 331586

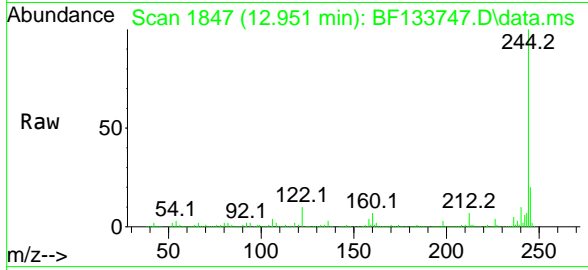
Ion	Ratio	Lower	Upper
240	100		
120	9.6	8.1	12.1
236	26.0	20.5	30.7



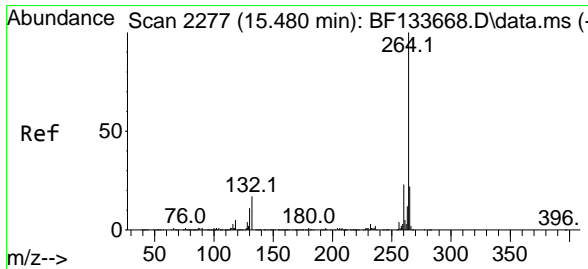
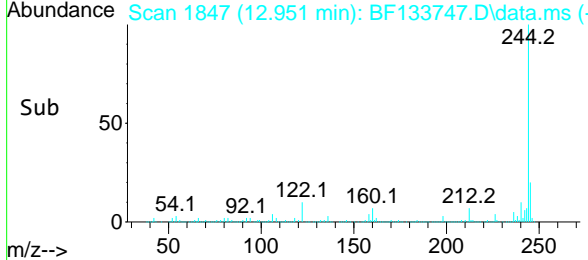
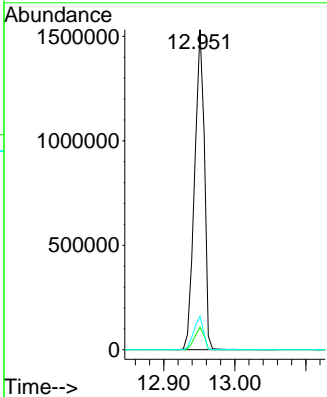


#79
 Terphenyl-d14
 Concen: 68.588 ng
 RT: 12.951 min Scan# 11
 Delta R.T. -0.006 min
 Lab File: BF133747.D
 Acq: 14 Jun 2023 12:05

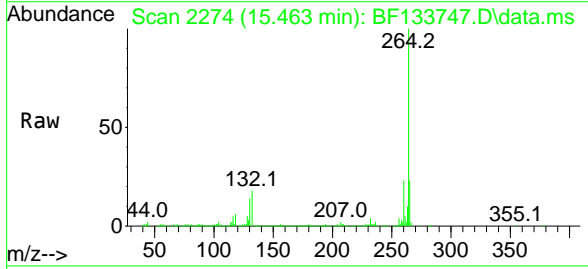
Instrument : BNA_F
 Client Sample Id : PB153224TB



Tgt Ion:244 Resp: 1469787
 Ion Ratio Lower Upper
 244 100
 212 7.0 5.4 8.2
 122 10.4 8.1 12.1



#86
 Perylene-d12
 Concen: 20.000 ng
 RT: 15.463 min Scan# 2274
 Delta R.T. -0.018 min
 Lab File: BF133747.D
 Acq: 14 Jun 2023 12:05



Tgt Ion:264 Resp: 248981
 Ion Ratio Lower Upper
 264 100
 260 23.3 18.2 27.2
 265 23.2 17.8 26.6

