

Data Path : Z:\SVOASRV\HPCHEM1\BNA F\DATA\BF062118\
 Data File : BF106670.D
 Acq On : 21 Jun 2018 19:34
 Operator : JU/SJ
 Sample : J3529-02RE
 Misc :
 ALS Vial : 6 Sample Multiplier: 1

Instrument :
 BNA_F
 ClientSampleId :
 TPTW-03RE

Quant Time: Jun 21 20:00:21 2018
 Quant Method : Z:\SVOASRV\HPCHEM1\BNA F\METHODS\8270-BF061918.M
 Quant Title : ASP BNA STANDARDS FOR 5 POINT CALIBRATION
 QLast Update : Thu Jun 21 16:55:30 2018
 Response via : Initial Calibration

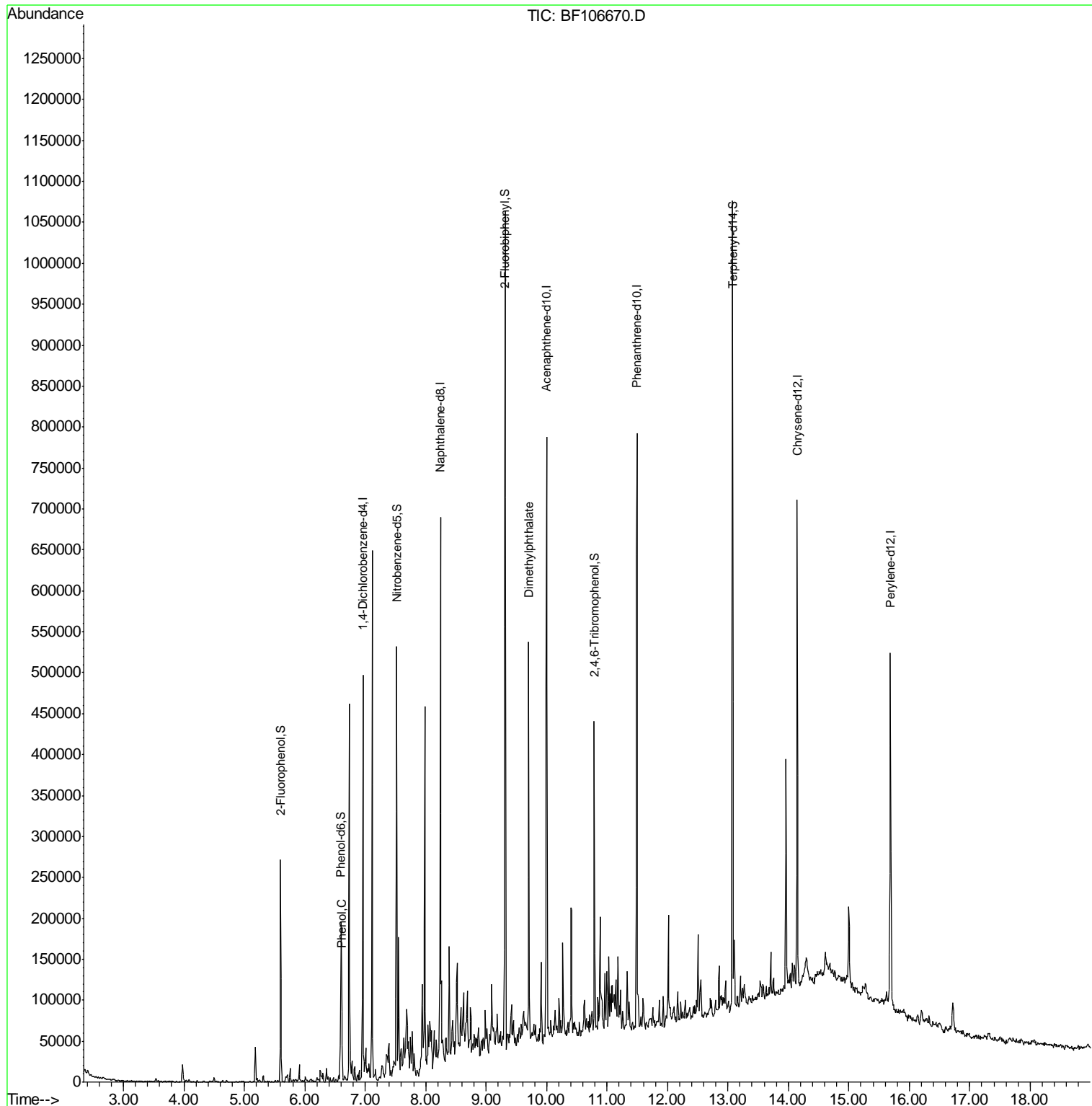
Internal Standards	R.T.	QIon	Response	Conc	Units	Dev(Min)
1) 1,4-Dichlorobenzene-d4	6.96	152	67409	20.00	ng	0.00
21) Naphthalene-d8	8.24	136	269275	20.00	ng	0.00
38) Acenaphthene-d10	10.00	164	138093	20.00	ng	0.00
63) Phenanthrene-d10	11.49	188	262777	20.00	ng	0.00
75) Chrysene-d12	14.15	240	204098	20.00	ng	0.00
86) Perylene-d12	15.69	264	213289	20.00	ng	0.00
System Monitoring Compounds						
5) 2-Fluorophenol	5.60	112	72856	18.30	ng	0.00
7) Phenol-d6	6.60	99	64685	13.01	ng	0.00
23) Nitrobenzene-d5	7.52	82	156492	32.30	ng	-0.01
41) 2,4,6-Tribromophenol	10.80	330	51380	32.10	ng	0.00
44) 2-Fluorobiphenyl	9.31	172	299763	26.61	ng	-0.01
78) Terphenyl-d14	13.08	244	339957	40.35	ng	0.00
Target Compounds						
10) Phenol	6.61	94	20513	3.616	ng	97
49) Dimethylphthalate	9.71	163	190703	18.413	ng	98

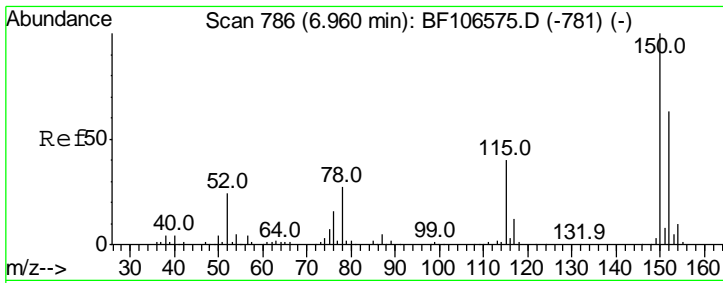
(#) = qualifier out of range (m) = manual integration (+) = signals summed

Data Path : Z:\SVOASRV\HPCHEM1\BNA F\DATA\BF062118\
 Data File : BF106670.D
 Acq On : 21 Jun 2018 19:34
 Operator : JU/SJ
 Sample : J3529-02RE
 Misc :
 ALS Vial : 6 Sample Multiplier: 1

Instrument :
 BNA_F
 ClientSampleId :
 TPTW-03RE

Quant Time: Jun 21 20:00:21 2018
 Quant Method : Z:\SVOASRV\HPCHEM1\BNA F\METHODS\8270-BF061918.M
 Quant Title : ASP BNA STANDARDS FOR 5 POINT CALIBRATION
 QLast Update : Thu Jun 21 16:55:30 2018
 Response via : Initial Calibration



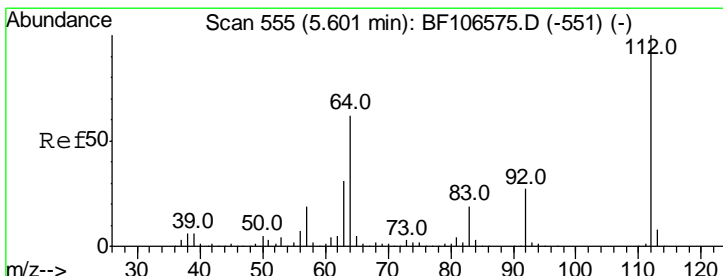
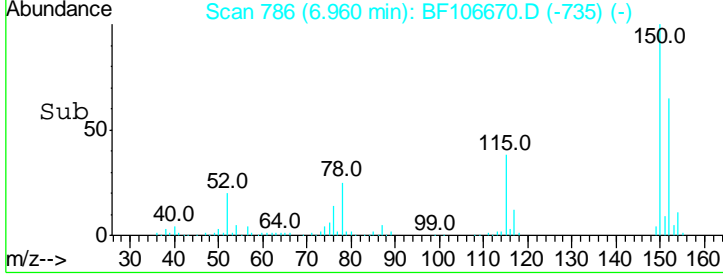
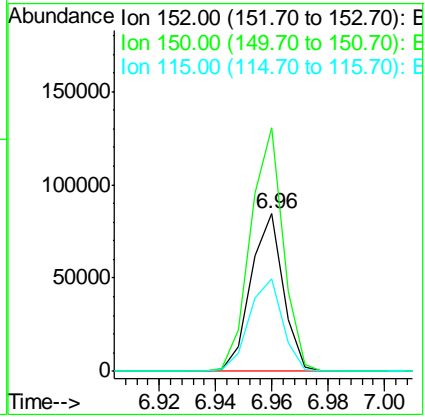
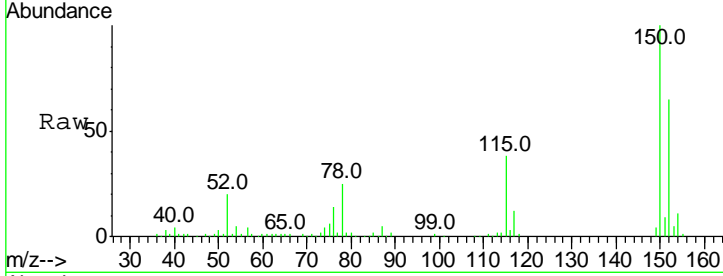


#1
 1,4-Dichlorobenzene-d4
 Concen: 20.000 ng
 RT: 6.96 min Scan# 786
 Delta R.T. 0.00 min
 Lab File: BF106670.D
 Acq: 21 Jun 2018 19:34

Instrument :
 BNA_F
ClientSampled :
 TPTW-03RE

Tgt Ion:152 Resp: 67409

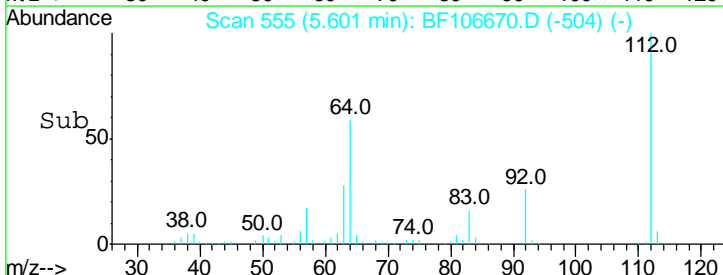
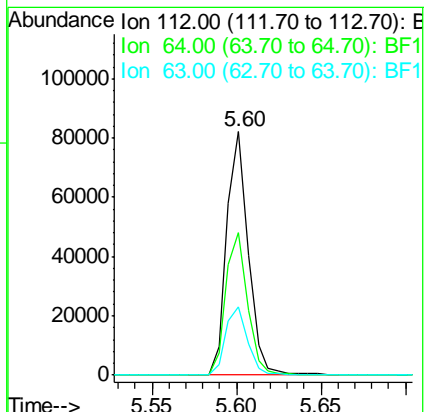
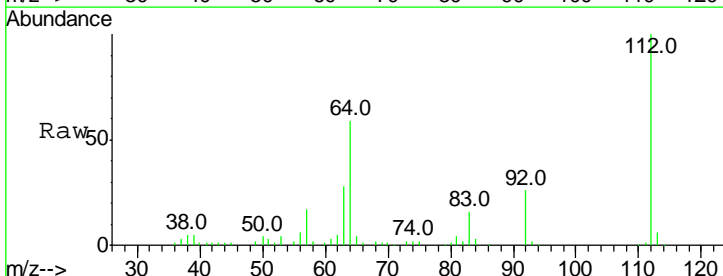
Ion	Ratio	Lower	Upper
152	100		
150	154.5	124.6	186.8
115	59.1	50.1	75.1

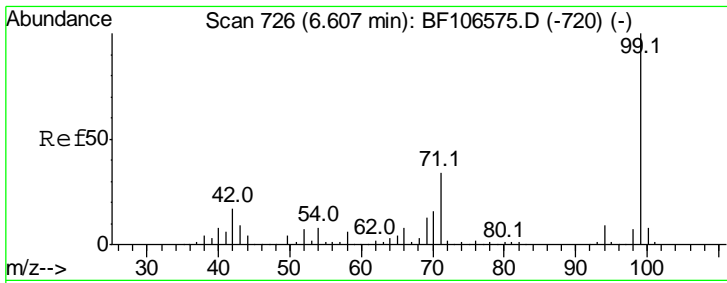


#5
 2-Fluorophenol
 Concen: 18.301 ng
 RT: 5.60 min Scan# 555
 Delta R.T. 0.00 min
 Lab File: BF106670.D
 Acq: 21 Jun 2018 19:34

Tgt Ion:112 Resp: 72856

Ion	Ratio	Lower	Upper
112	100		
64	58.6	47.9	71.9
63	27.9	23.7	35.5

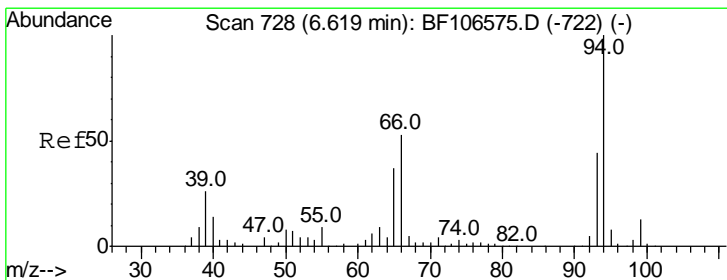
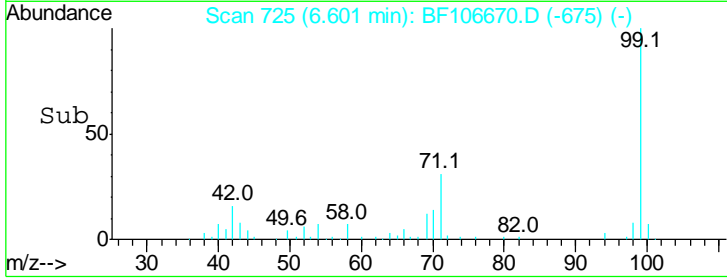
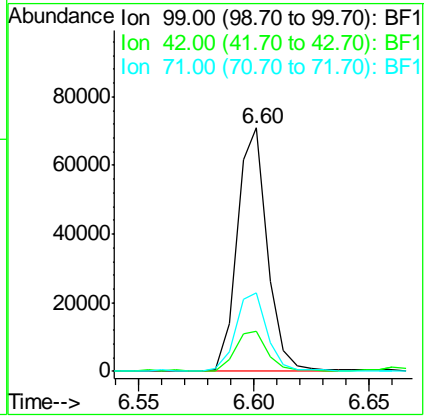
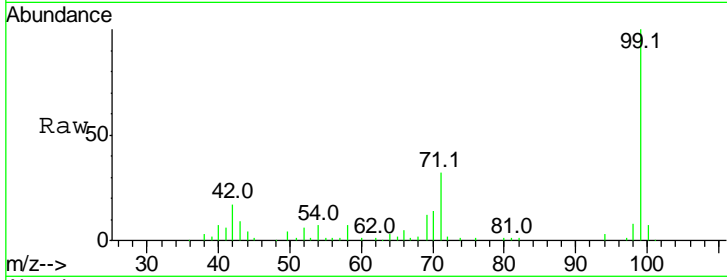




#7
 Phenol-d6
 Concen: 13.012 ng
 RT: 6.60 min Scan# 725
 Delta R.T. -0.01 min
 Lab File: BF106670.D
 Acq: 21 Jun 2018 19:34

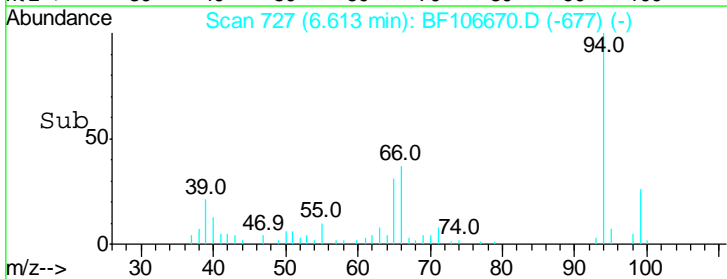
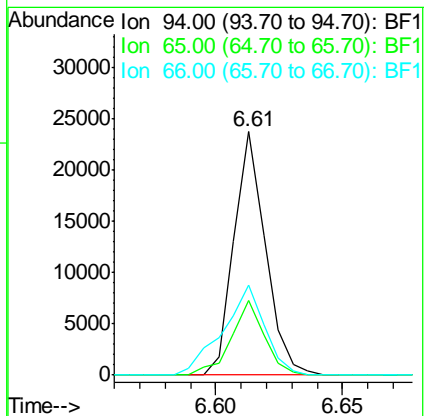
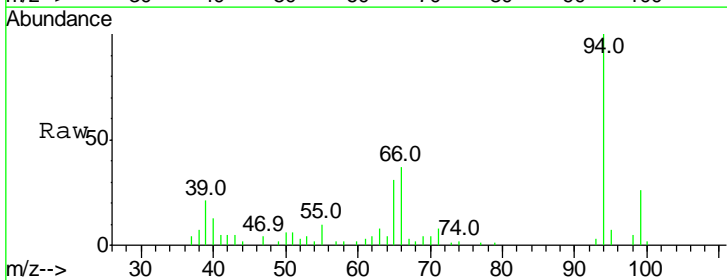
Instrument :
 BNA_F
ClientSampled :
 TPTW-03RE

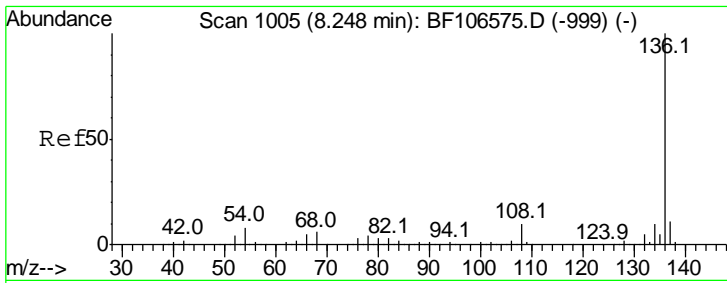
Tgt Ion	Resp	Lower	Upper
99	64685		
99	100		
42	16.7	14.5	21.7
71	32.1	25.4	38.0



#10
 Phenol
 Concen: 3.616 ng
 RT: 6.61 min Scan# 727
 Delta R.T. -0.01 min
 Lab File: BF106670.D
 Acq: 21 Jun 2018 19:34

Tgt Ion	Resp	Lower	Upper
94	20513		
94	100		
65	30.5	7.9	47.9
66	37.1	16.2	56.2



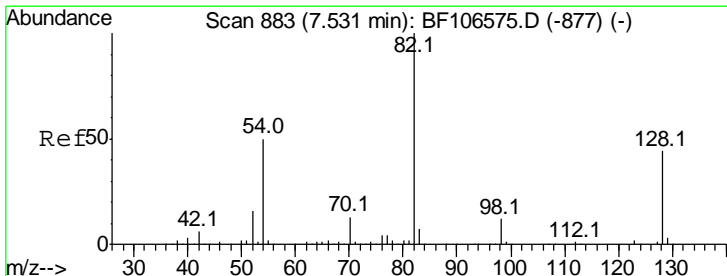
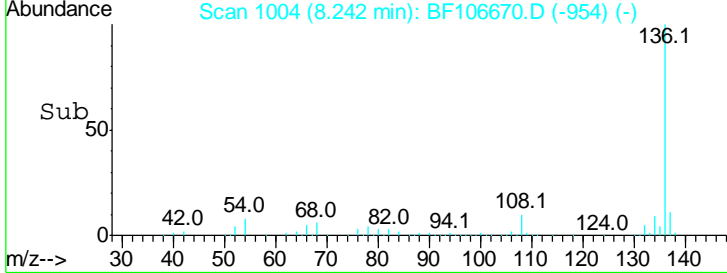
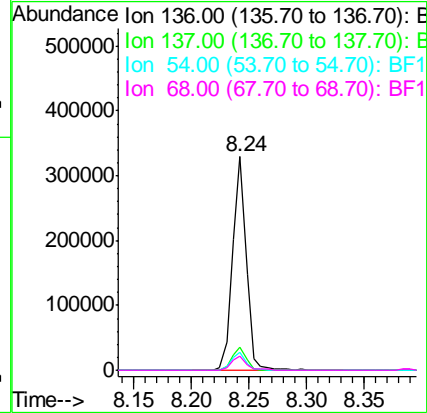
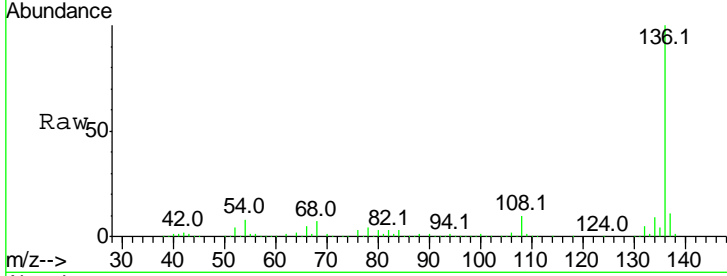


#21
 Naphthalene-d8
 Concen: 20.000 ng
 RT: 8.24 min Scan# 1004
 Delta R.T. -0.01 min
 Lab File: BF106670.D
 Acq: 21 Jun 2018 19:34

Instrument :
 BNA_F
ClientSampled :
 TPTW-03RE

Tgt Ion: 136 Resp: 269275

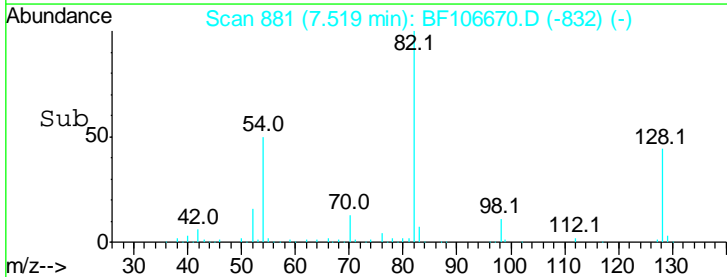
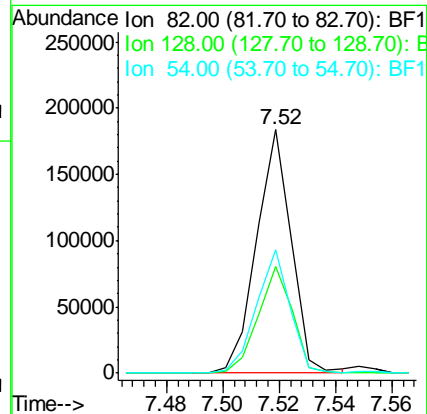
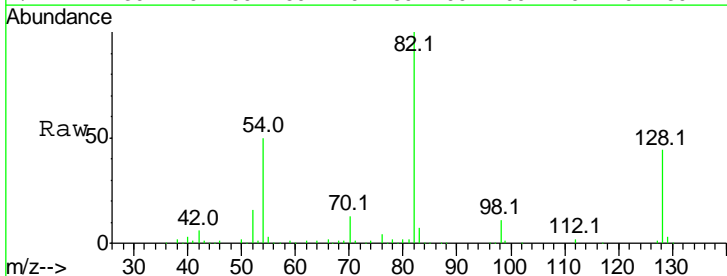
Ion	Ratio	Lower	Upper
136	100		
137	10.9	8.9	13.3
54	8.3	6.6	9.8
68	6.6	5.0	7.4

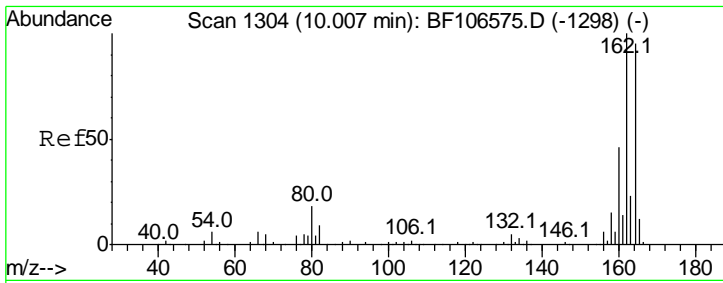


#23
 Nitrobenzene-d5
 Concen: 32.297 ng
 RT: 7.52 min Scan# 881
 Delta R.T. -0.01 min
 Lab File: BF106670.D
 Acq: 21 Jun 2018 19:34

Tgt Ion: 82 Resp: 156492

Ion	Ratio	Lower	Upper
82	100		
128	43.5	36.1	54.1
54	50.5	41.4	62.2



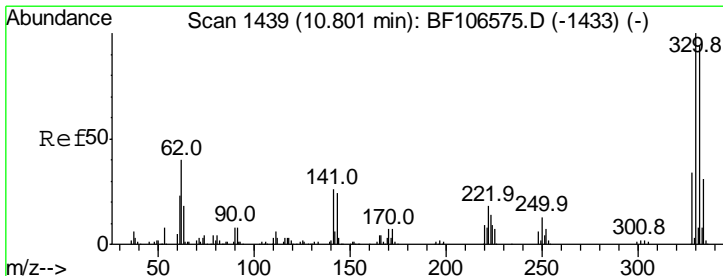
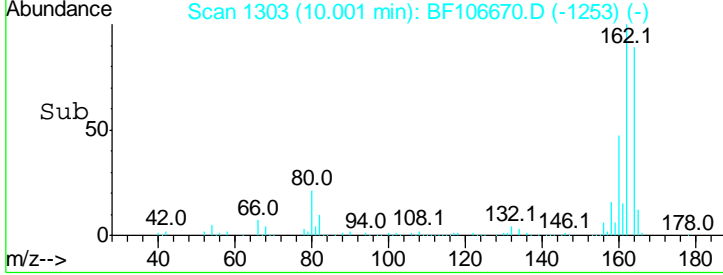
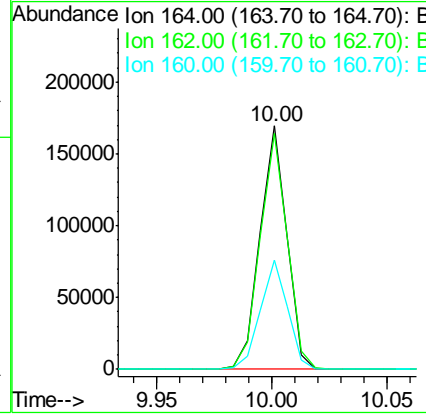
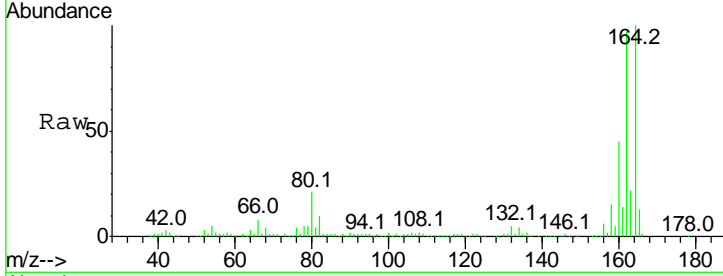


#38
 Acenaphthene-d10
 Concen: 20.000 ng
 RT: 10.00 min Scan# 1303
 Delta R.T. -0.01 min
 Lab File: BF106670.D
 Acq: 21 Jun 2018 19:34

Instrument :
 BNA_F
 ClientSampled :
 TPTW-03RE

Tgt Ion:164 Resp: 138093

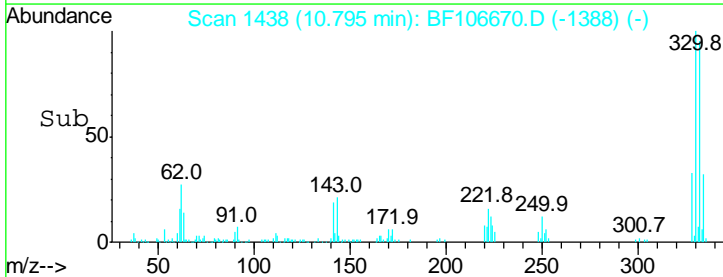
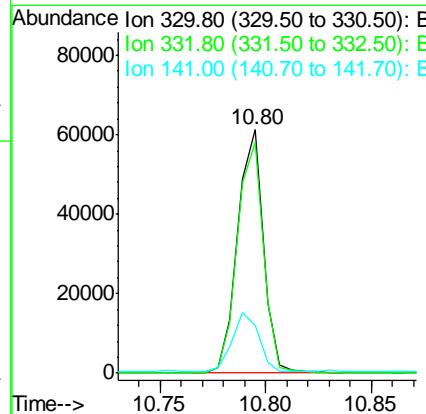
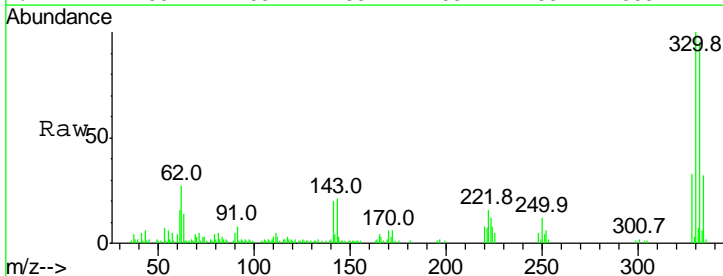
Ion	Ratio	Lower	Upper
164	100		
162	96.8	86.1	129.1
160	44.7	38.3	57.5

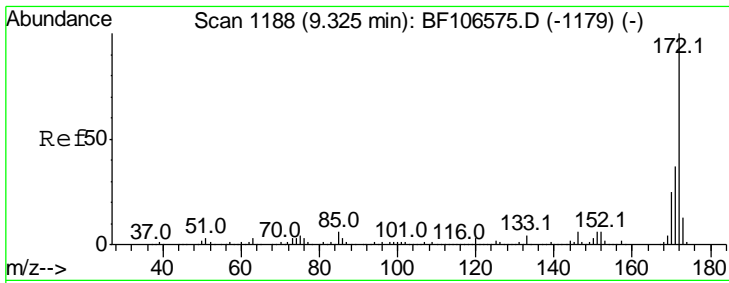


#41
 2,4,6-Tribromophenol
 Concen: 32.102 ng
 RT: 10.80 min Scan# 1438
 Delta R.T. -0.01 min
 Lab File: BF106670.D
 Acq: 21 Jun 2018 19:34

Tgt Ion:330 Resp: 51380

Ion	Ratio	Lower	Upper
330	100		
332	96.1	77.0	115.6
141	25.9	29.9	44.9#

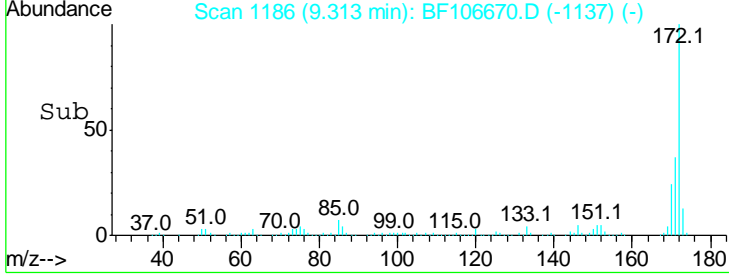
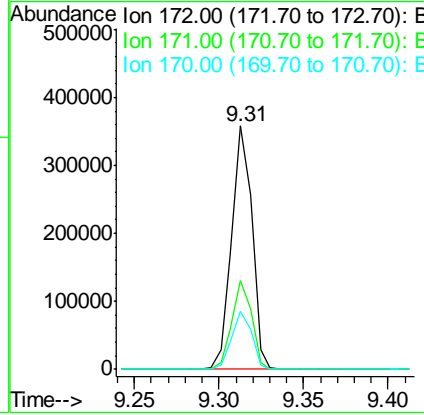
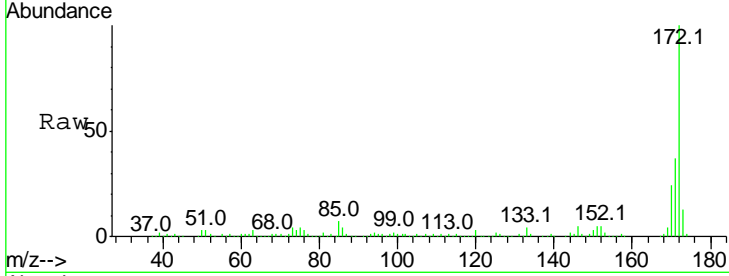




#44
 2-Fluorobiphenyl
 Concen: 26.609 ng
 RT: 9.31 min Scan# 1186
 Delta R.T. -0.01 min
 Lab File: BF106670.D
 Acq: 21 Jun 2018 19:34

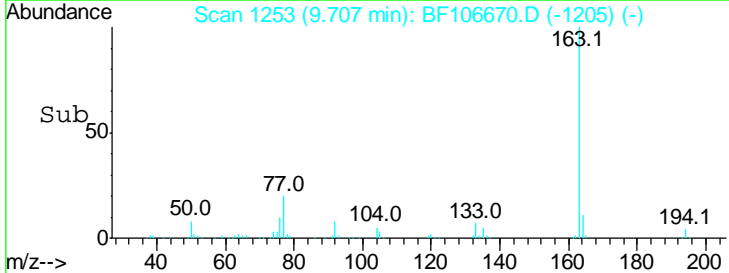
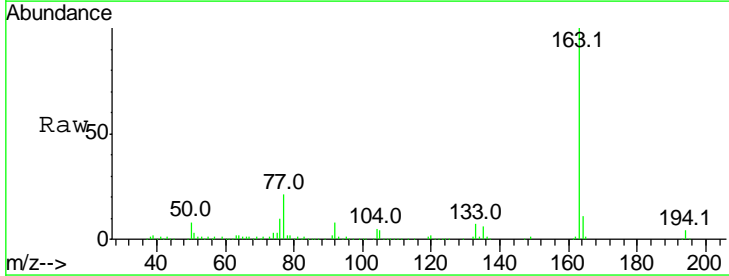
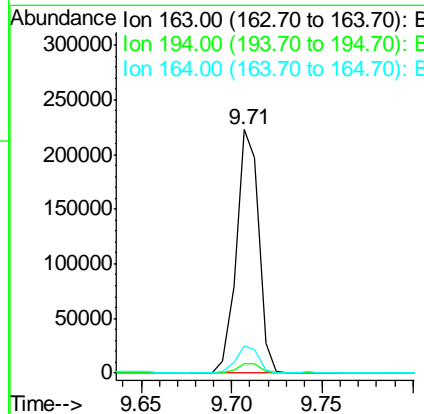
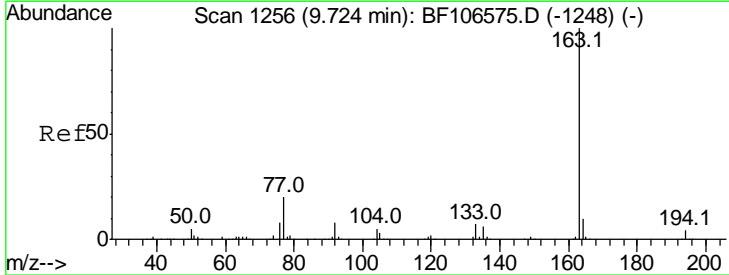
Instrument :
 BNA_F
 ClientSampleID :
 TPTW-03RE

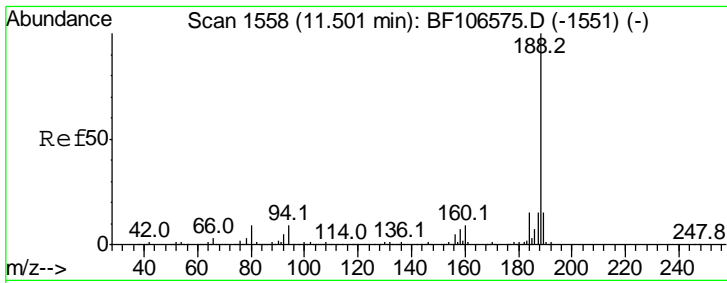
Tgt Ion	Resp	Lower	Upper
172	100		
171	36.6	29.7	44.5
170	24.1	19.6	29.4



#49
 Dimethylphthalate
 Concen: 18.413 ng
 RT: 9.71 min Scan# 1253
 Delta R.T. -0.02 min
 Lab File: BF106670.D
 Acq: 21 Jun 2018 19:34

Tgt Ion	Resp	Lower	Upper
163	100		
194	4.0	2.7	4.1
164	11.0	8.2	12.2

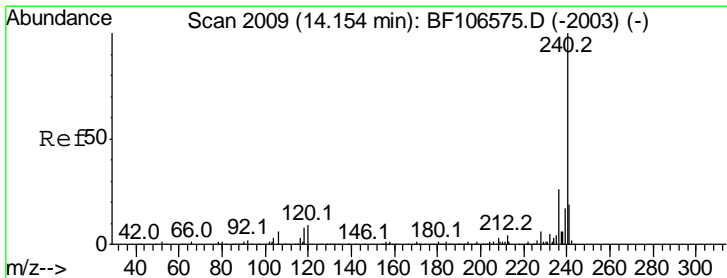
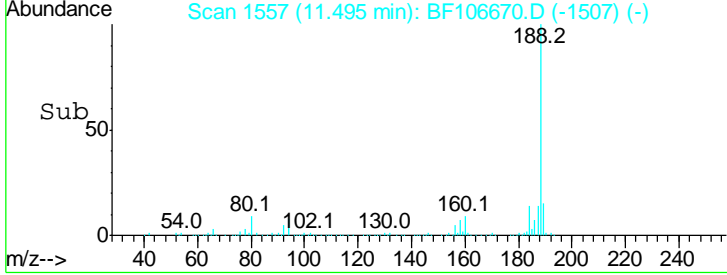
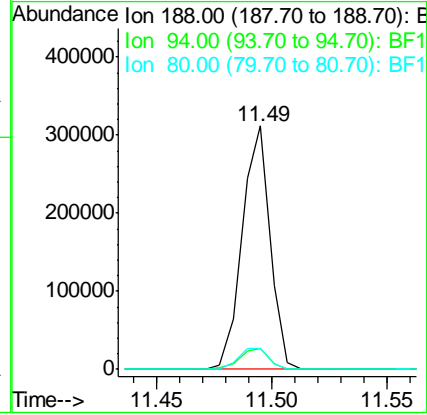
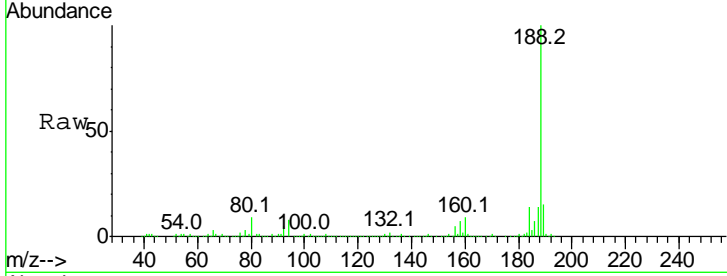




#63
 Phenanthrene-d10
 Concen: 20.000 ng
 RT: 11.49 min Scan# 1557
 Delta R.T. -0.01 min
 Lab File: BF106670.D
 Acq: 21 Jun 2018 19:34

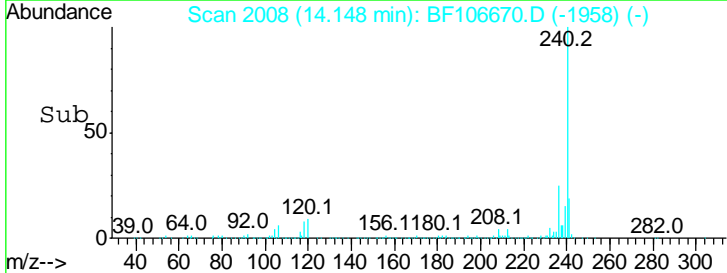
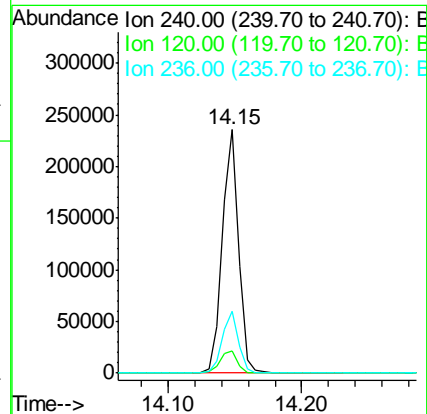
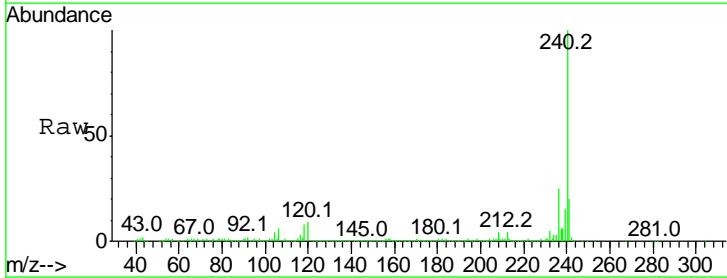
Instrument :
 BNA_F
 ClientSampled :
 TPTW-03RE

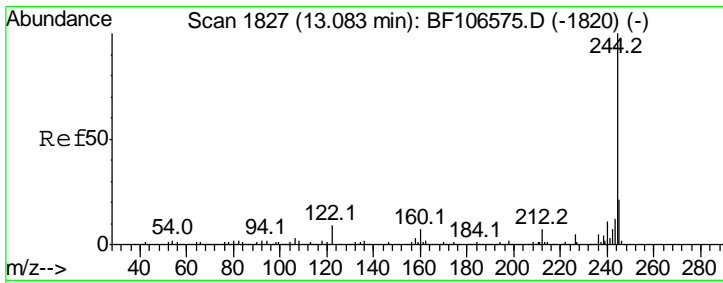
Tgt Ion	Resp	Lower	Upper
188	100		
94	8.4	8.5	12.7#
80	8.8	9.2	13.8#



#75
 Chrysene-d12
 Concen: 20.000 ng
 RT: 14.15 min Scan# 2008
 Delta R.T. -0.01 min
 Lab File: BF106670.D
 Acq: 21 Jun 2018 19:34

Tgt Ion	Resp	Lower	Upper
240	100		
120	9.2	9.5	14.3#
236	25.3	20.7	31.1

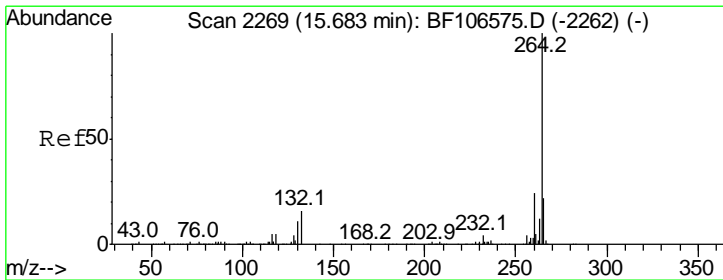
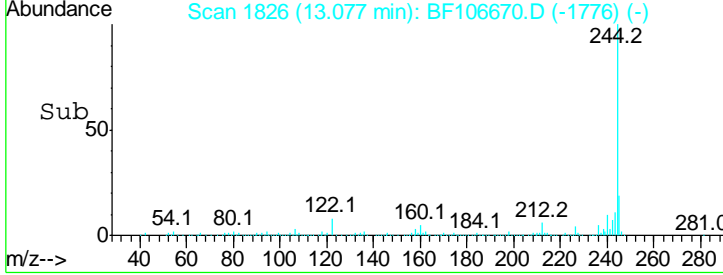
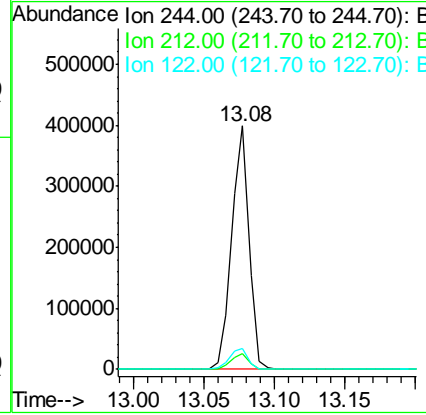
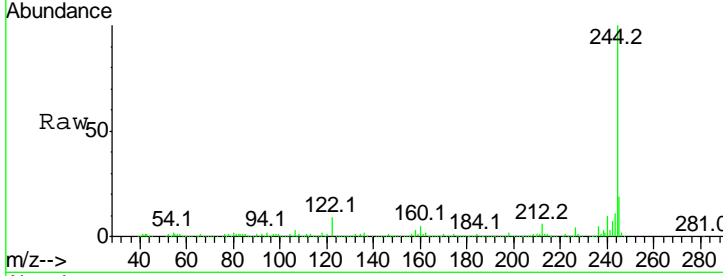




#78
 Terphenyl-d14
 Concen: 40.347 ng
 RT: 13.08 min Scan# 1826
 Delta R.T. -0.01 min
 Lab File: BF106670.D
 Acq: 21 Jun 2018 19:34

Instrument :
 BNA_F
ClientSampled :
 TPTW-03RE

Tgt Ion	Resp	Lower	Upper
244	100		
212	6.4	5.4	8.0
122	8.6	11.0	16.4#



#86
 Perylene-d12
 Concen: 20.000 ng
 RT: 15.69 min Scan# 2270
 Delta R.T. 0.01 min
 Lab File: BF106670.D
 Acq: 21 Jun 2018 19:34

Tgt Ion	Resp	Lower	Upper
264	100		
260	23.4	19.2	28.8
265	21.6	17.5	26.3

