

Data Path : Z:\SVOASRV\HPCHEM1\BNA F\DATA\BF062118\  
 Data File : BF106663.D  
 Acq On : 21 Jun 2018 15:53  
 Operator : JU/SJ  
 Sample : J3524-01 2X  
 Misc :  
 ALS Vial : 14 Sample Multiplier: 1

Instrument :  
 BNA\_F  
 ClientSampleId :  
 AREA-3(S)

Integration Parameters: rteint.p  
 Integrator: RTE  
 Smoothing : ON  
 Sampling : 1  
 Start Thrs: 0.2  
 Stop Thrs : 0

Filtering: 5  
 Min Area: 3 % of largest Peak  
 Max Peaks: 100  
 Peak Location: TOP

If leading or trailing edge < 100 prefer < Baseline drop else tangent >  
 Peak separation: 5

Method : Z:\SVOASRV\HPCHEM1\BNA F\METHODS\8270-BF061918.M  
 Title : ASP BNA STANDARDS FOR 5 POINT CALIBRATION

Signal : TIC

peak #	R.T. min	first scan	max scan	last scan	PK TY	peak height	corr. area	corr. % max.	% of total
1	5.178	480	483	490	rBV	37109	34806	4.24%	0.334%
2	5.595	551	554	563	rBV	501160	437071	53.22%	4.191%
3	6.595	721	724	735	rVB	540893	469387	57.16%	4.501%
4	6.731	744	747	751	rBV	587569	484942	59.05%	4.651%
5	6.960	782	786	789	rBV	693971	572992	69.77%	5.495%
6	7.113	808	812	815	rBV	496449	385772	46.98%	3.700%
7	7.519	877	881	884	rBV	358713	291452	35.49%	2.795%
8	8.242	1000	1004	1007	rBV	940622	756540	92.12%	7.255%
9	8.819	1097	1102	1106	rVB	13429	12315	1.50%	0.118%
10	8.954	1122	1125	1129	rBV	34139	33103	4.03%	0.317%
11	9.054	1139	1142	1148	rBV	32864	30492	3.71%	0.292%
12	9.313	1183	1186	1190	rBV	698902	549619	66.93%	5.271%
13	9.383	1195	1198	1201	rBV	23525	20807	2.53%	0.200%
14	9.583	1228	1232	1237	rBV	19586	26289	3.20%	0.252%
15	9.654	1240	1244	1247	rVV	27680	29026	3.53%	0.278%
16	9.683	1247	1249	1250	rVV	17733	13517	1.65%	0.130%
17	9.707	1250	1253	1260	rVB	76941	77969	9.49%	0.748%
18	9.772	1260	1264	1266	rBV3	12378	14215	1.73%	0.136%
19	9.860	1276	1279	1282	rBV	20087	16084	1.96%	0.154%
20	9.913	1284	1288	1292	rVB	34257	30229	3.68%	0.290%
21	10.001	1300	1303	1307	rBV2	905209	778535	94.80%	7.466%
22	10.030	1307	1308	1313	rVB	41574	33140	4.04%	0.318%
23	10.101	1316	1320	1324	rBV2	7603	11630	1.42%	0.112%
24	10.201	1334	1337	1340	rBV2	24579	25827	3.14%	0.248%
25	10.236	1340	1343	1347	rVB3	18554	17634	2.15%	0.169%
26	10.313	1353	1356	1359	rBV	14463	13918	1.69%	0.133%
27	10.342	1359	1361	1365	rVB2	10260	9350	1.14%	0.090%
28	10.413	1367	1373	1376	rBV3	44561	49282	6.00%	0.473%
29	10.548	1393	1396	1403	rVB	42017	43295	5.27%	0.415%
30	10.630	1405	1410	1413	rVV3	25129	30886	3.76%	0.296%
31	10.789	1434	1437	1441	rBV	247395	220164	26.81%	2.111%
32	10.895	1450	1455	1464	rVB4	42628	78696	9.58%	0.755%
33	10.966	1464	1467	1468	rBV	11468	10474	1.28%	0.100%
34	10.995	1468	1472	1476	rVB5	9652	13917	1.69%	0.133%

Data Path : Z:\SVOASRV\HPCHEM1\BNA F\DATA\BF062118\  
 Data File : BF106663.D  
 Acq On : 21 Jun 2018 15:53  
 Operator : JU/SJ  
 Sample : J3524-01 2X  
 Misc :  
 ALS Vial : 14 Sample Multiplier: 1

Instrument :  
 BNA\_F  
 ClientSampleId :  
 AREA-3(S)

Integration Parameters: rteint.p  
 Integrator: RTE  
 Smoothing : ON Filtering: 5  
 Sampling : 1 Min Area: 3 % of largest Peak  
 Start Thrs: 0.2 Max Peaks: 100  
 Stop Thrs : 0 Peak Location: TOP

If leading or trailing edge < 100 prefer < Baseline drop else tangent >  
 Peak separation: 5

Method : Z:\SVOASRV\HPCHEM1\BNA F\METHODS\8270-BF061918.M  
 Title : ASP BNA STANDARDS FOR 5 POINT CALIBRATION

35	11.030	1476	1478	1481	rBV2	12186	10080	1.23%	0.097%
36	11.095	1484	1489	1493	rBV7	17390	29298	3.57%	0.281%
37	11.177	1500	1503	1506	rVB2	15216	14768	1.80%	0.142%
38	11.225	1506	1511	1514	rBV6	10313	18170	2.21%	0.174%
39	11.336	1527	1530	1532	rBV	37137	29592	3.60%	0.284%
40	11.366	1532	1535	1537	rVV2	26784	25230	3.07%	0.242%
41	11.389	1537	1539	1542	rVB	19531	15474	1.88%	0.148%
42	11.495	1553	1557	1559	rBV	805590	723128	88.05%	6.935%
43	11.519	1559	1561	1564	rVV	241243	189624	23.09%	1.818%
44	11.566	1567	1569	1572	rVV	43288	36355	4.43%	0.349%
45	11.607	1572	1576	1578	rVB3	9175	9620	1.17%	0.092%
46	11.724	1592	1596	1600	rVB2	9024	12303	1.50%	0.118%
47	11.760	1600	1602	1605	rVB	26586	19108	2.33%	0.183%
48	11.824	1610	1613	1616	rVB	12707	13613	1.66%	0.131%
49	11.907	1624	1627	1629	rBV	9926	9491	1.16%	0.091%
50	11.995	1638	1642	1644	rBV	43457	39071	4.76%	0.375%
51	12.024	1644	1647	1650	rVV	49697	45022	5.48%	0.432%
52	12.072	1652	1655	1658	rVV	18248	18625	2.27%	0.179%
53	12.107	1658	1661	1664	rVV2	53524	65469	7.97%	0.628%
54	12.130	1664	1665	1669	rVB2	33892	23928	2.91%	0.229%
55	12.172	1669	1672	1674	rBV	29617	23209	2.83%	0.223%
56	12.289	1689	1692	1694	rBV2	26090	22217	2.71%	0.213%
57	12.319	1694	1697	1699	rVB3	13614	12857	1.57%	0.123%
58	12.419	1712	1714	1716	rBV3	11055	13019	1.59%	0.125%
59	12.519	1728	1731	1733	rBV3	18375	16473	2.01%	0.158%
60	12.548	1733	1736	1744	rVV4	32677	78713	9.58%	0.755%
61	12.636	1748	1751	1753	rBV3	15942	19695	2.40%	0.189%
62	12.660	1753	1755	1760	rVB3	14548	17844	2.17%	0.171%
63	12.707	1760	1763	1767	rBV	260794	252138	30.70%	2.418%
64	12.748	1767	1770	1772	rBV3	12902	13691	1.67%	0.131%
65	12.801	1776	1779	1783	rBV3	16996	23752	2.89%	0.228%
66	12.860	1787	1789	1791	rVB2	12140	10604	1.29%	0.102%
67	12.942	1796	1803	1809	rVV	253929	300126	36.55%	2.878%
68	12.989	1809	1811	1815	rVV3	20157	23429	2.85%	0.225%
69	13.071	1822	1825	1829	rBV	503357	474452	57.77%	4.550%
70	13.154	1836	1839	1844	rBV5	18439	29256	3.56%	0.281%
71	13.266	1851	1858	1860	rBV2	49078	70316	8.56%	0.674%

Data Path : Z:\SVOASRV\HPCHEM1\BNA F\DATA\BF062118\  
 Data File : BF106663.D  
 Acq On : 21 Jun 2018 15:53  
 Operator : JU/SJ  
 Sample : J3524-01 2X  
 Misc :  
 ALS Vial : 14 Sample Multiplier: 1

Instrument :  
 BNA\_F  
 ClientSampleId :  
 AREA-3(S)

Integration Parameters: rteint.p  
 Integrator: RTE  
 Smoothing : ON Filtering: 5  
 Sampling : 1 Min Area: 3 % of largest Peak  
 Start Thrs: 0.2 Max Peaks: 100  
 Stop Thrs : 0 Peak Location: TOP

If leading or trailing edge < 100 prefer < Baseline drop else tangent >  
 Peak separation: 5

Method : Z:\SVOASRV\HPCHEM1\BNA F\METHODS\8270-BF061918.M  
 Title : ASP BNA STANDARDS FOR 5 POINT CALIBRATION

72	13.289	1860	1862	1865	rVB	28838	21166	2.58%	0.203%
73	13.330	1867	1869	1872	rVB	34918	31776	3.87%	0.305%
74	13.371	1872	1876	1879	rBV2	37008	46235	5.63%	0.443%
75	13.466	1890	1892	1894	rBV	13394	11239	1.37%	0.108%
76	13.495	1894	1897	1900	rBV2	24794	31313	3.81%	0.300%
77	13.548	1903	1906	1908	rVV	41480	30979	3.77%	0.297%
78	13.601	1913	1915	1917	rVB	20608	14667	1.79%	0.141%
79	13.630	1918	1920	1923	rVB2	24146	19333	2.35%	0.185%
80	13.966	1974	1977	1980	rVB2	50732	40949	4.99%	0.393%
81	14.107	1999	2001	2004	rBV2	30200	26783	3.26%	0.257%
82	14.148	2004	2008	2011	rVV2	755125	821224	100.00%	7.876%
83	14.177	2011	2013	2019	rVB	124879	112775	13.73%	1.082%
84	14.289	2030	2032	2036	rBV2	34668	34193	4.16%	0.328%
85	14.613	2084	2087	2090	rBV	49794	43627	5.31%	0.418%
86	15.242	2191	2194	2200	rBV	62864	110608	13.47%	1.061%
87	15.630	2257	2260	2267	rVB	68297	96806	11.79%	0.928%
88	15.701	2267	2272	2277	rBV	431566	560755	68.28%	5.378%

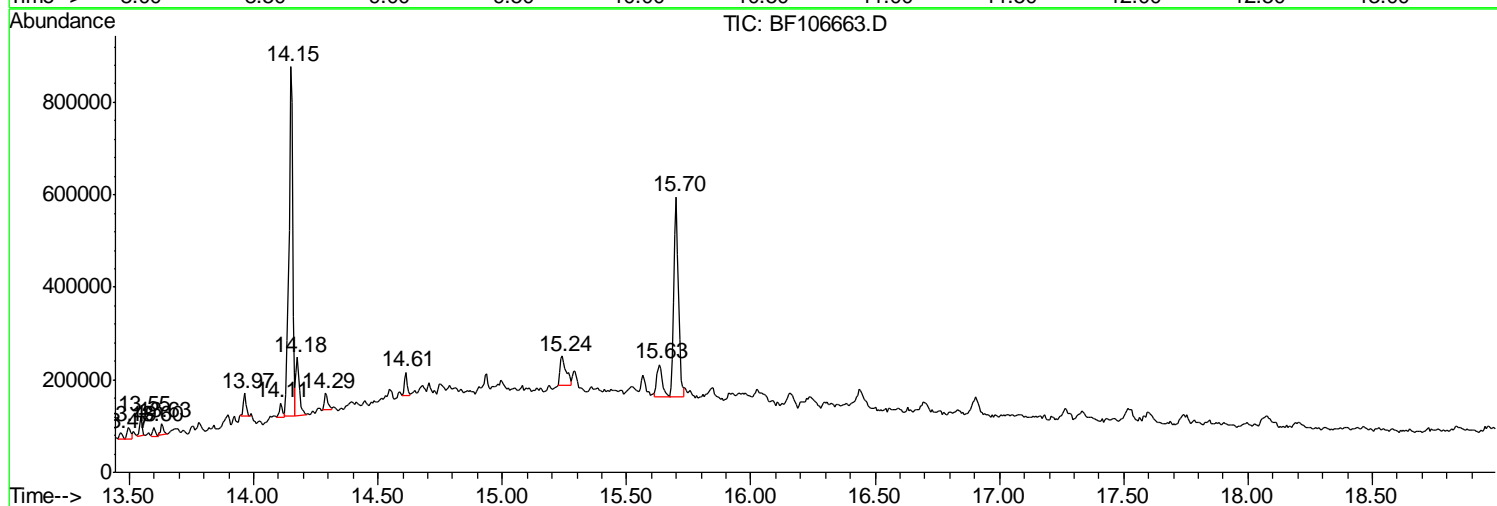
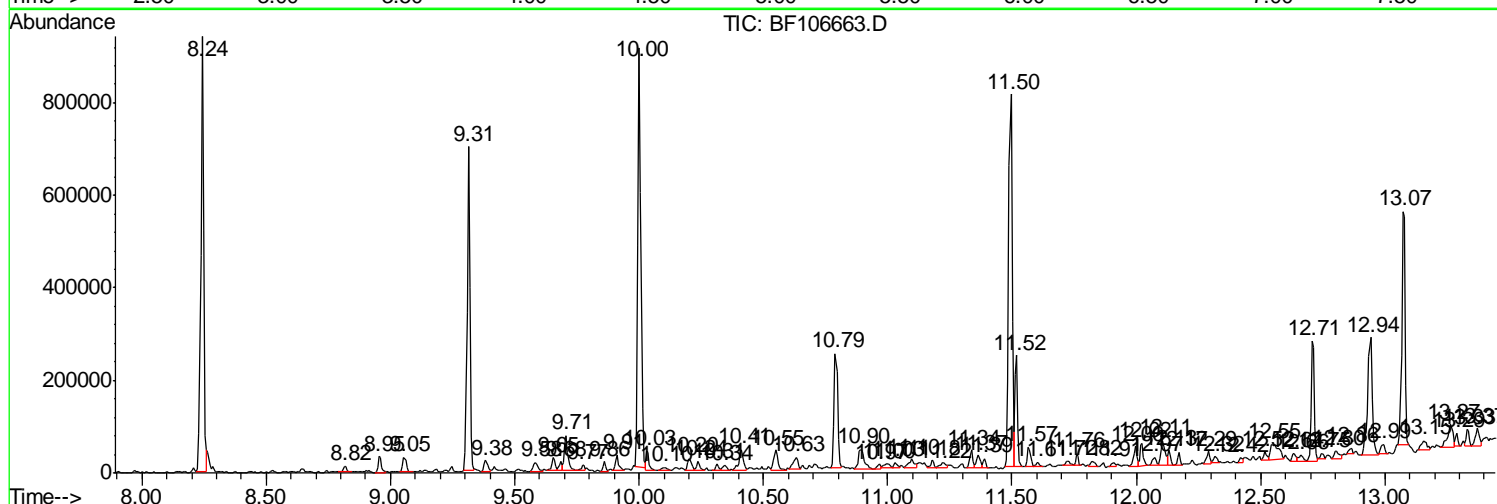
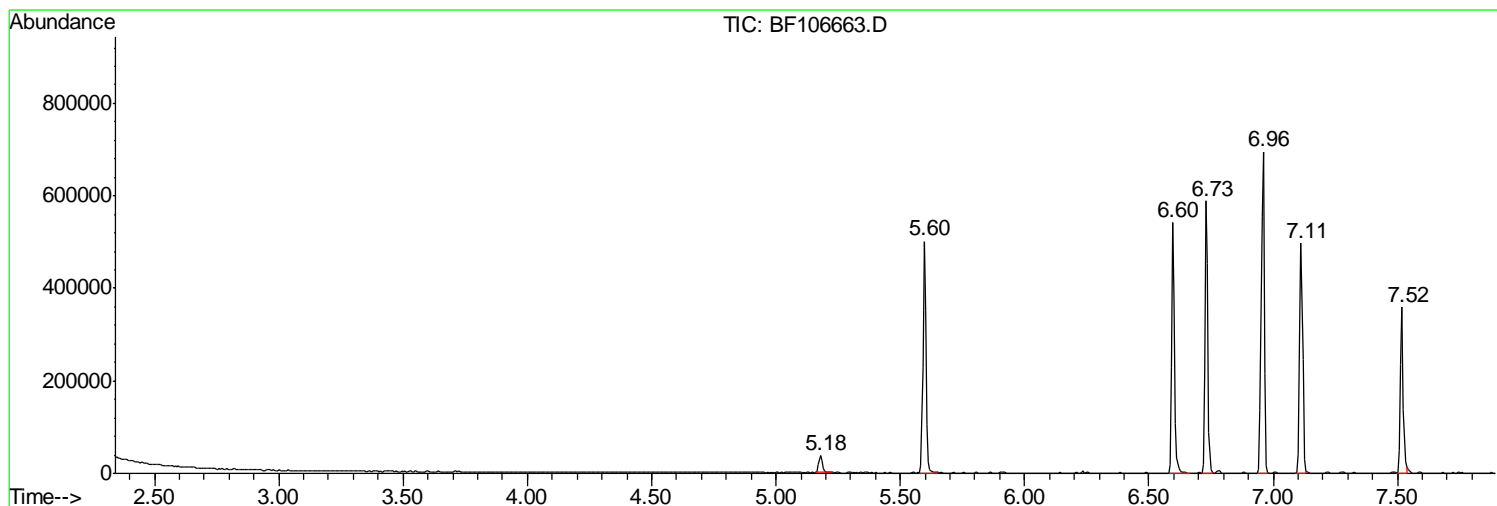
Sum of corrected areas: 10427563

Data Path : Z:\SVOASRV\HPCHEM1\BNA F\DATA\BF062118\  
 Data File : BF106663.D  
 Acq On : 21 Jun 2018 15:53  
 Operator : JU/SJ  
 Sample : J3524-01 2X  
 Misc :  
 ALS Vial : 14 Sample Multiplier: 1

Instrument :  
 BNA\_F  
 Client Sampled :  
 AREA-3(S)

Quant Method : Z:\SVOASRV\HPCHEM1\BNA F\METHODS\8270-BF061918.M  
 Quant Title : ASP BNA STANDARDS FOR 5 POINT CALIBRATION

TIC Library : C:\DATABASE\NIST11.L  
 TIC Integration Parameters: LSCINT.P



Data Path : Z:\SVOASRV\HPCHEM1\BNA F\DATA\BF062118\  
 Data File : BF106663.D  
 Acq On : 21 Jun 2018 15:53  
 Operator : JU/SJ  
 Sample : J3524-01 2X  
 Misc :  
 ALS Vial : 14 Sample Multiplier: 1

Instrument :  
 BNA\_F  
 ClientSampleID :  
 AREA-3(S)

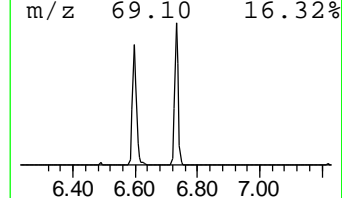
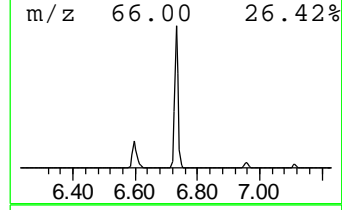
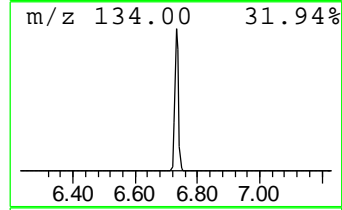
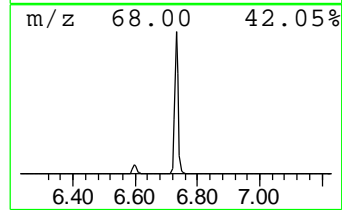
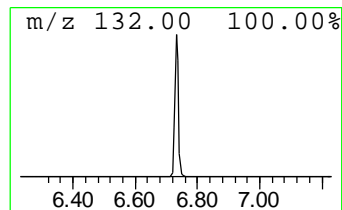
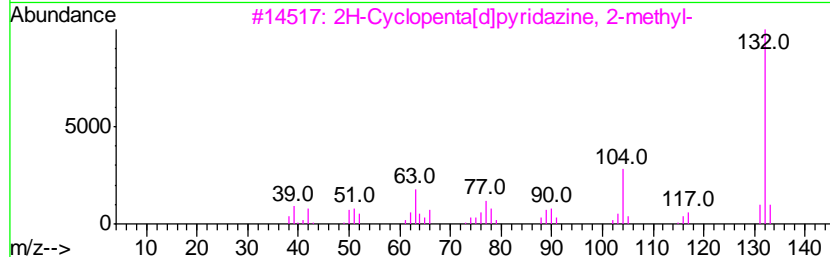
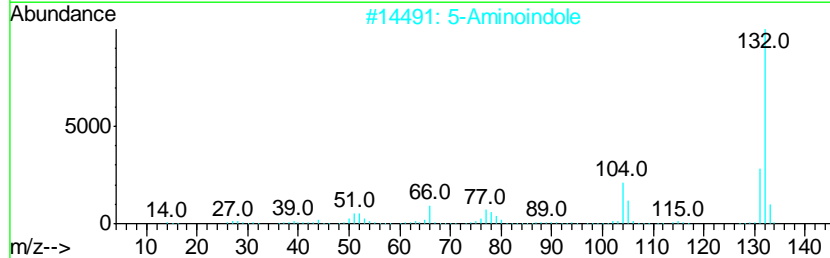
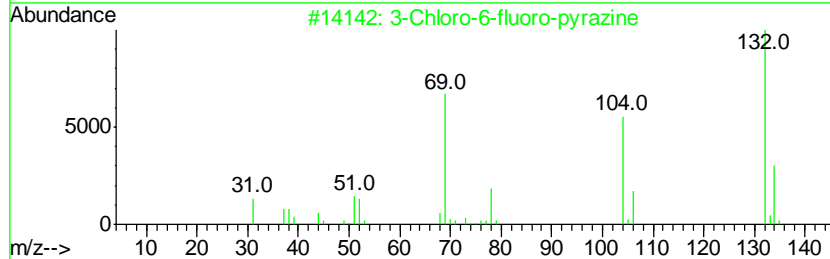
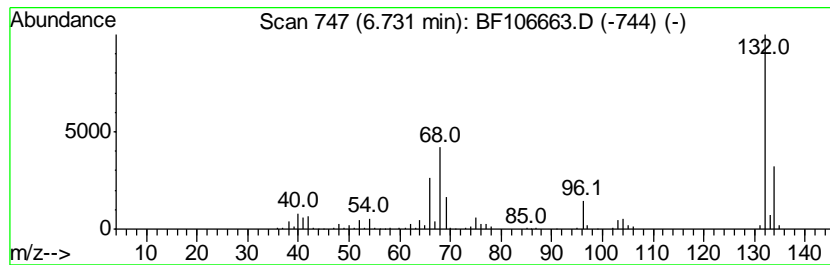
Quant Method : Z:\SVOASRV\HPCHEM1\BNA F\METHODS\8270-BF061918.M  
 Quant Title : ASP BNA STANDARDS FOR 5 POINT CALIBRATION

TIC Library : C:\DATABASE\NIST11.L  
 TIC Integration Parameters: LSCINT.P

\*\*\*\*\*  
 Peak Number 1 unknown6.73 Concentration Rank 1

R.T.	EstConc	Area	Relative to ISTD	R.T.
6.73	16.93 ng	484942	1,4-Dichlorobenzene-d4	6.96

Hit#	of	Tentative ID	MW	MolForm	CAS#	Qual
1	5	3-Chloro-6-fluoro-pyrazine	132	C4H2ClFN2	1000146-10-7	27
2		5-Aminoindole	132	C8H8N2	005192-03-0	12
3		2H-Cyclopenta[d]pyridazine, 2-me...	132	C8H8N2	022291-85-6	9
4		4-Chloro-6-fluoro-pyrimidine	132	C4H2ClFN2	051422-01-6	9
5		(E)-3-Chloro-2-methyl-2-pentenal	132	C6H9ClO	031357-76-3	9



Data Path : Z:\SVOASRV\HPCHEM1\BNA F\DATA\BF062118\  
 Data File : BF106663.D  
 Acq On : 21 Jun 2018 15:53  
 Operator : JU/SJ  
 Sample : J3524-01 2X  
 Misc :  
 ALS Vial : 14 Sample Multiplier: 1

Instrument :  
 BNA\_F  
 ClientSampleId :  
 AREA-3(S)

Quant Method : Z:\SVOASRV\HPCHEM1\BNA F\METHODS\8270-BF061918.M  
 Quant Title : ASP BNA STANDARDS FOR 5 POINT CALIBRATION

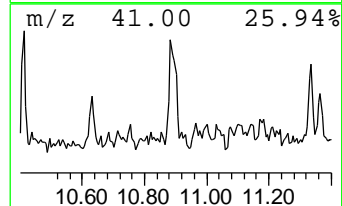
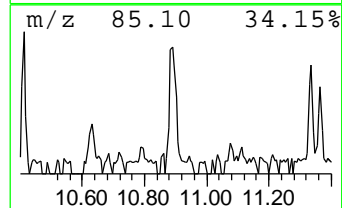
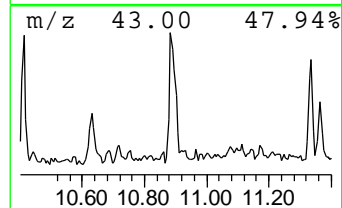
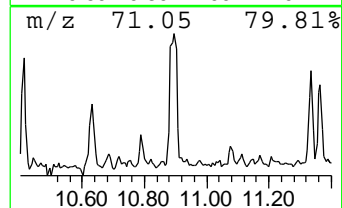
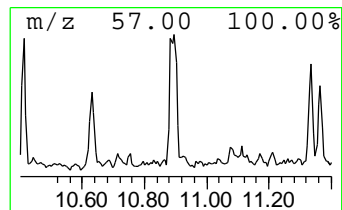
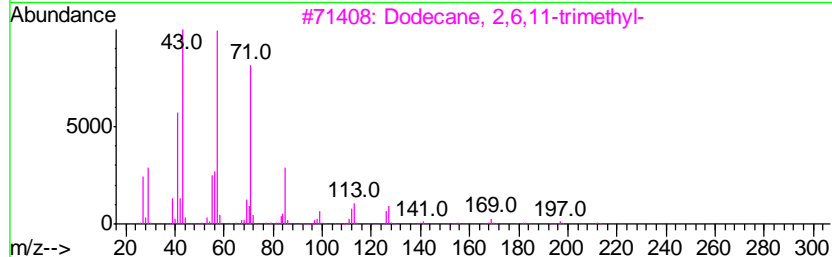
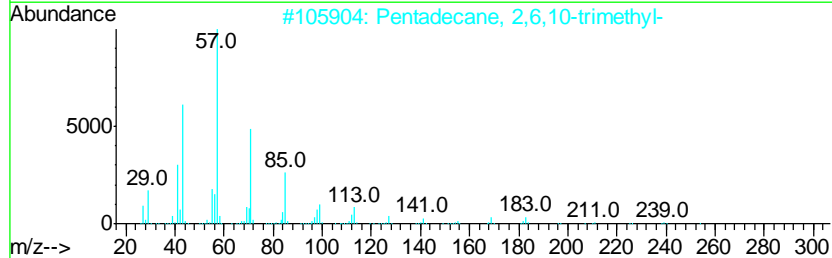
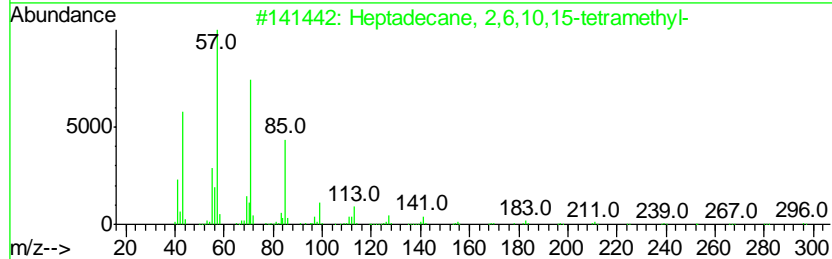
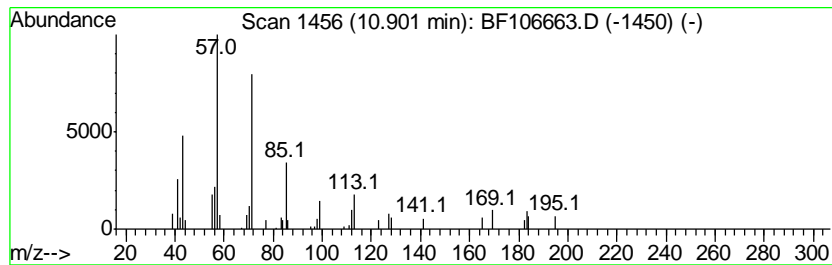
TIC Library : C:\DATABASE\NIST11.L  
 TIC Integration Parameters: LSCINT.P

\*\*\*\*\*  
 Peak Number 4 Heptadecane, 2,6,10,15-tetr... Concentration Rank 4

R.T.	EstConc	Area	Relative to ISTD	R.T.
10.90	2.18 ng	78696	Phenanthrene-d10	11.50

Hit#	of	Tentative ID	MW	MolForm	CAS#	Qual
1	5	Heptadecane, 2,6,10,15-tetramethyl-	296	C21H44	054833-48-6	80
2		Pentadecane, 2,6,10-trimethyl-	254	C18H38	003892-00-0	80
3		Dodecane, 2,6,11-trimethyl-	212	C15H32	031295-56-4	72
4		Tridecane, 5-propyl-	226	C16H34	055045-11-9	72
5		Tetratetracontane	619	C44H90	007098-22-8	72



Data Path : Z:\SVOASRV\HPCHEM1\BNA F\DATA\BF062118\  
 Data File : BF106663.D  
 Acq On : 21 Jun 2018 15:53  
 Operator : JU/SJ  
 Sample : J3524-01 2X  
 Misc :  
 ALS Vial : 14 Sample Multiplier: 1

Instrument :  
 BNA\_F  
 ClientSampled :  
 AREA-3(S)

Quant Method : Z:\SVOASRV\HPCHEM1\BNA F\METHODS\8270-BF061918.M  
 Quant Title : ASP BNA STANDARDS FOR 5 POINT CALIBRATION

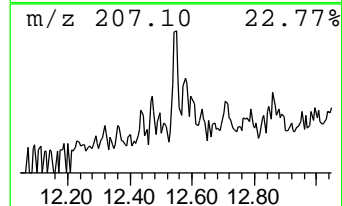
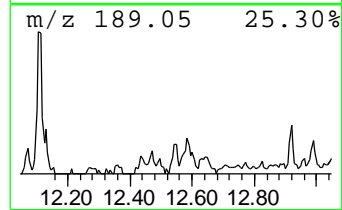
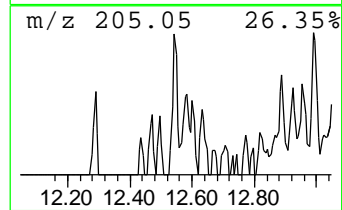
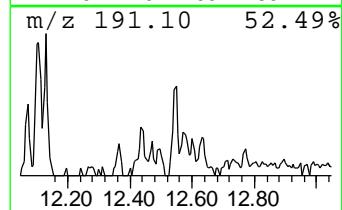
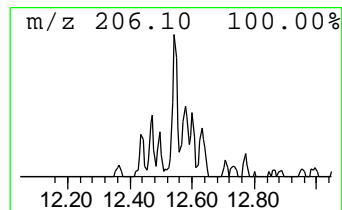
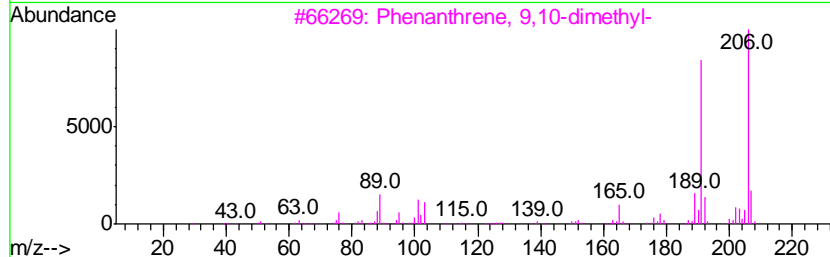
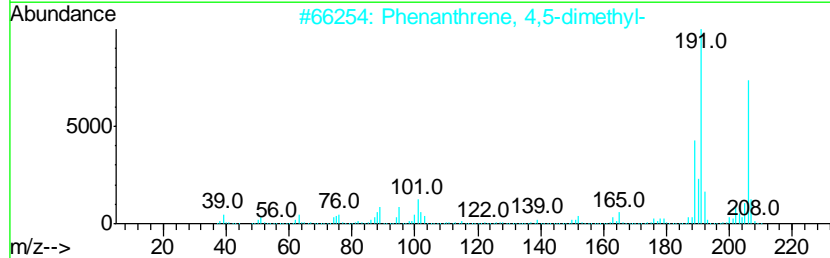
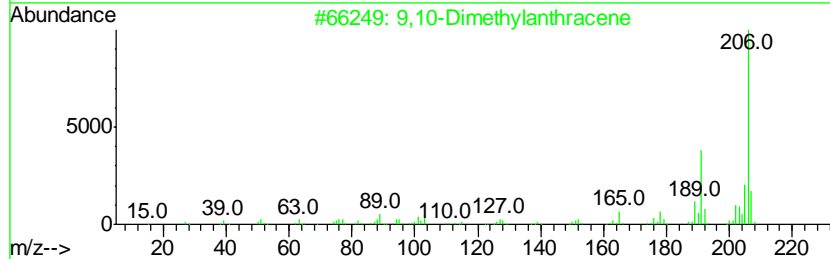
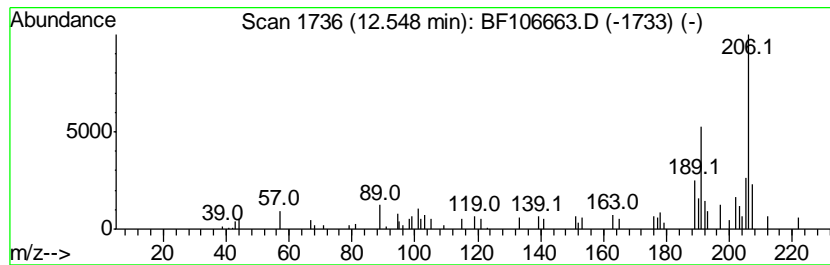
TIC Library : C:\DATABASE\NIST11.L  
 TIC Integration Parameters: LSCINT.P

\*\*\*\*\*  
 Peak Number 5 9,10-Dimethylantracene Concentration Rank 3

R.T.	EstConc	Area	Relative to ISTD	R.T.
12.55	2.18 ng	78713	Phenanthrene-d10	11.50

Hit#	of	Tentative ID	MW	MolForm	CAS#	Qual
1	5	9,10-Dimethylantracene	206	C16H14	000781-43-1	87
2		Phenanthrene, 4,5-dimethyl-	206	C16H14	003674-69-9	83
3		Phenanthrene, 9,10-dimethyl-	206	C16H14	000604-83-1	81
4		Phenanthrene, 2,5-dimethyl-	206	C16H14	003674-66-6	81
5		Anthracene, 2-ethyl-	206	C16H14	052251-71-5	78



Data Path : Z:\SVOASRV\HPCHEM1\BNA\_F\DATA\BF062118\  
Data File : BF106663.D  
Acq On : 21 Jun 2018 15:53  
Operator : JU/SJ  
Sample : J3524-01 2X  
Misc :  
ALS Vial : 14 Sample Multiplier: 1

Instrument :  
BNA\_F  
ClientSampleId :  
AREA-3(S)

Quant Method : Z:\SVOASRV\HPCHEM1\BNA\_F\METHODS\8270-BF061918.M  
Quant Title : ASP BNA STANDARDS FOR 5 POINT CALIBRATION

TIC Library : C:\DATABASE\NIST11.L  
TIC Integration Parameters: LSCINT.P

TIC Top Hit name	RT	EstConc	Units	Response	--Internal Standard--			
					#	RT	Resp	Conc
unknown6.73	6.73	16.9	ng	484942	1	6.96	572992	20.0
Heptadecane, 2,6,...	10.90	2.2	ng	78696	4	11.50	723128	20.0
9,10-Dimethylanth...	12.55	2.2	ng	78713	4	11.50	723128	20.0