

Data Path : Z:\svoasrv\HPCHEM1\BNA_F\Data\BF062723\
 Data File : BF134008.D
 Acq On : 28 Jun 2023 02:09
 Operator : CG\JU
 Sample : 03357-07
 Misc :
 ALS Vial : 25 Sample Multiplier: 1

Instrument :
 BNA_F
 ClientSampleId :
 WC-SCAN-02

Quant Time: Jun 28 02:31:07 2023
 Quant Method : Z:\svoasrv\HPCHEM1\BNA_F\Methods\8270-BF062623.M
 Quant Title : ASP BNA STANDARDS FOR 5 POINT CALIBRATION
 QLast Update : Mon Jun 26 23:12:04 2023
 Response via : Initial Calibration

Compound	R.T.	QIon	Response	Conc	Units	Dev(Min)
Internal Standards						
1) 1,4-Dichlorobenzene-d4	6.851	152	92470	20.000	ng	0.00
21) Naphthalene-d8	8.128	136	310576	20.000	ng	0.00
39) Acenaphthene-d10	9.886	164	131986	20.000	ng	0.00
64) Phenanthrene-d10	11.386	188	255314	20.000	ng	0.00
76) Chrysene-d12	14.045	240	180247	20.000	ng	0.00
86) Perylene-d12	15.551	264	139533	20.000	ng	0.00
System Monitoring Compounds						
5) 2-Fluorophenol	5.498	112	677018	122.472	ng	0.02
7) Phenol-d6	6.492	99	725819	106.765	ng	0.00
23) Nitrobenzene-d5	7.416	82	536595	93.135	ng	0.00
42) 2,4,6-Tribromophenol	10.686	330	214745	129.768	ng	0.00
45) 2-Fluorobiphenyl	9.210	172	883836	97.359	ng	0.00
79) Terphenyl-d14	12.986	244	1110105	99.121	ng	0.00

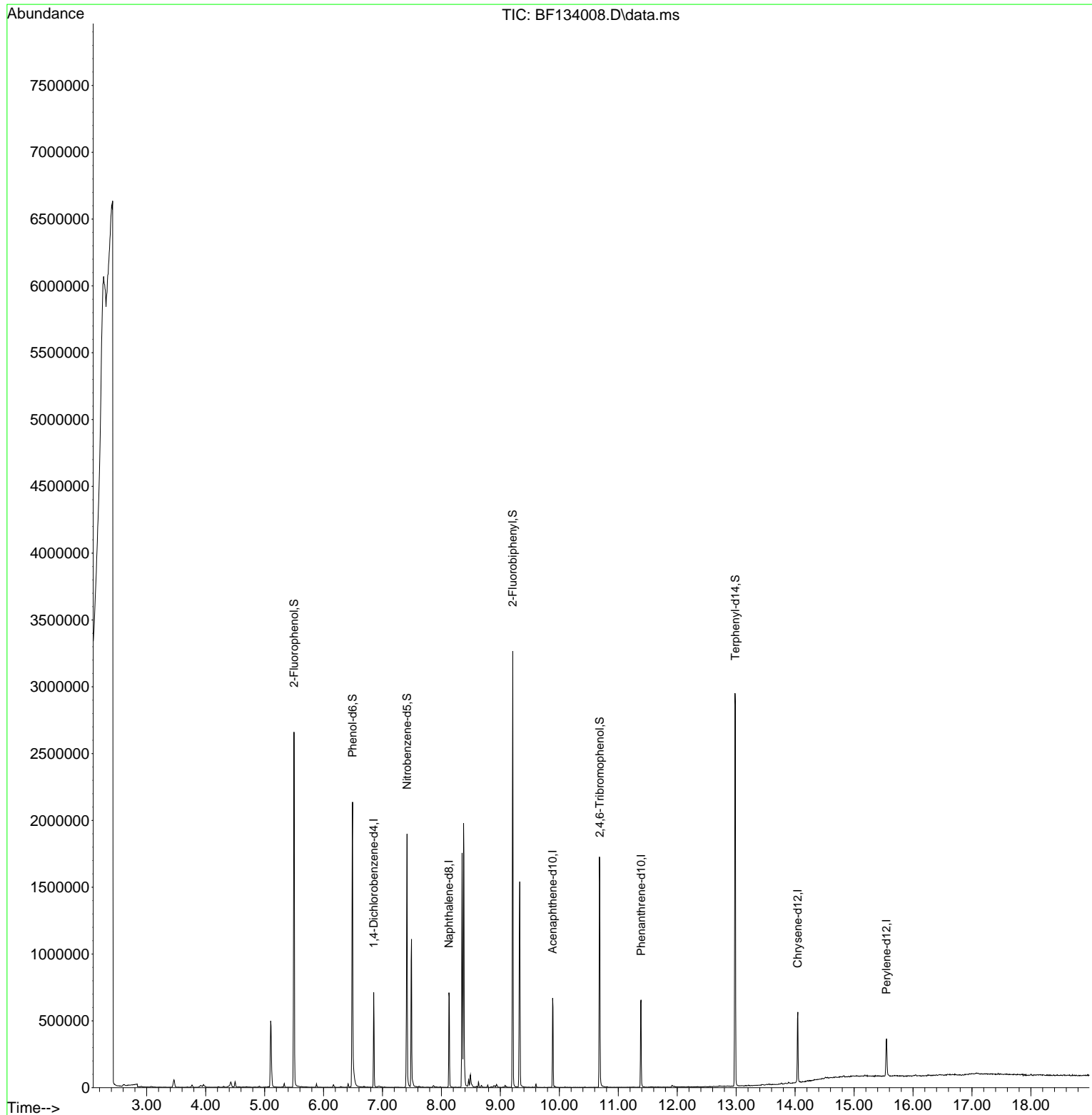
Target Compounds Qvalue

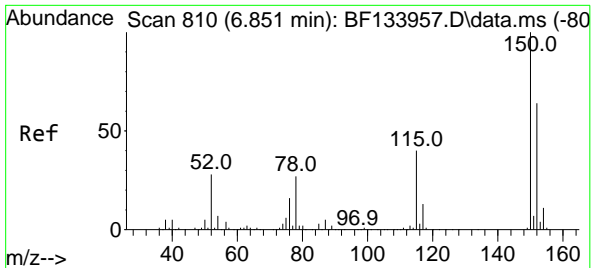
(#) = qualifier out of range (m) = manual integration (+) = signals summed

Data Path : Z:\svoasrv\HPCHEM1\BNA_F\Data\BF062723\
 Data File : BF134008.D
 Acq On : 28 Jun 2023 02:09
 Operator : CG\JU
 Sample : 03357-07
 Misc :
 ALS Vial : 25 Sample Multiplier: 1

Instrument :
 BNA_F
 ClientSampleId :
 WC-SCAN-02

Quant Time: Jun 28 02:31:07 2023
 Quant Method : Z:\svoasrv\HPCHEM1\BNA_F\Methods\8270-BF062623.M
 Quant Title : ASP BNA STANDARDS FOR 5 POINT CALIBRATION
 QLast Update : Mon Jun 26 23:12:04 2023
 Response via : Initial Calibration

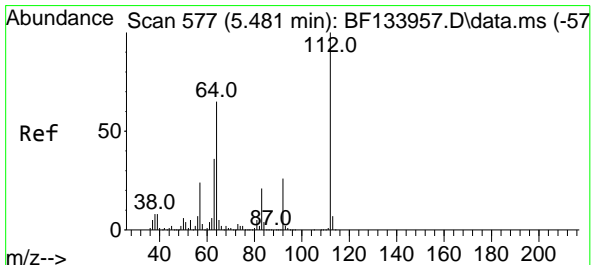
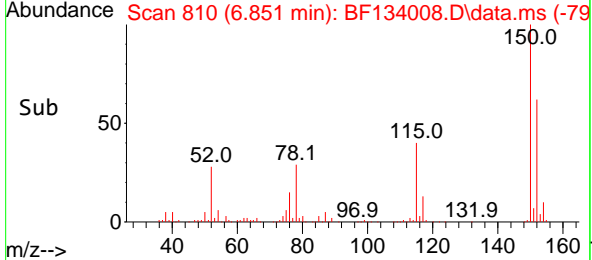
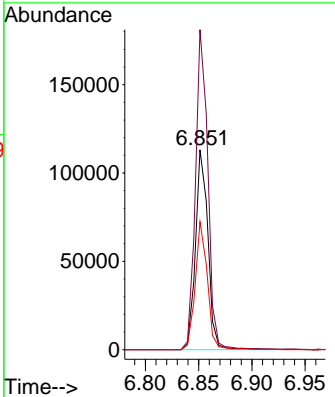
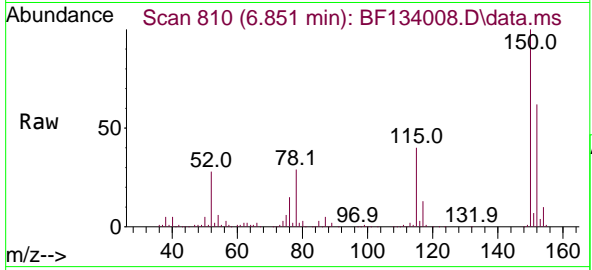




#1
 1,4-Dichlorobenzene-d4
 Concen: 20.000 ng
 RT: 6.851 min Scan# 810
 Delta R.T. 0.000 min
 Lab File: BF134008.D
 Acq: 28 Jun 2023 02:09

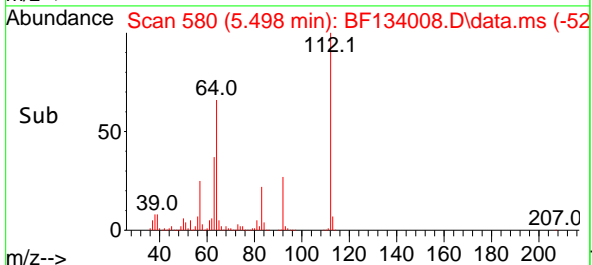
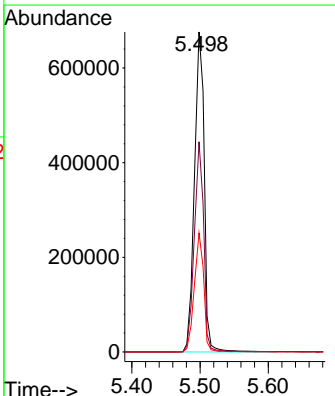
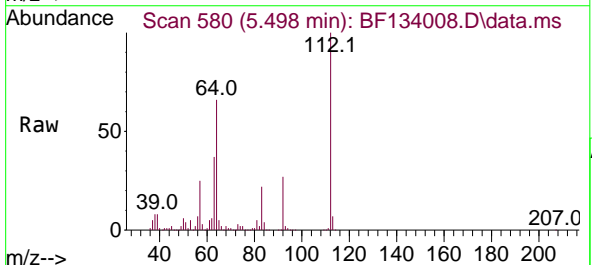
Instrument : BNA_F
 ClientSampleId : WC-SCAN-02

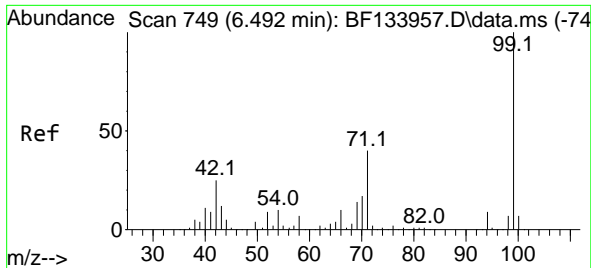
Tgt Ion:152 Resp: 92470
 Ion Ratio Lower Upper
 152 100
 150 160.1 124.5 186.7
 115 64.1 50.2 75.2



#5
 2-Fluorophenol
 Concen: 122.472 ng
 RT: 5.498 min Scan# 580
 Delta R.T. 0.018 min
 Lab File: BF134008.D
 Acq: 28 Jun 2023 02:09

Tgt Ion:112 Resp: 677018
 Ion Ratio Lower Upper
 112 100
 64 65.7 52.1 78.1
 63 37.2 28.6 42.8



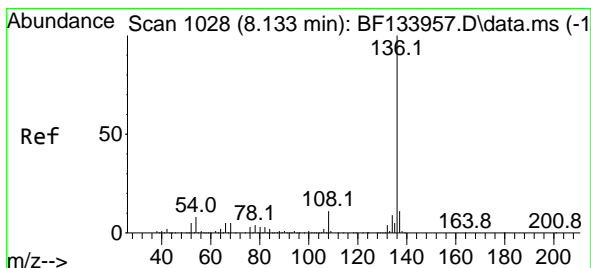
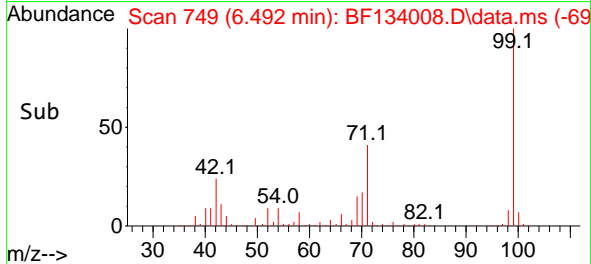
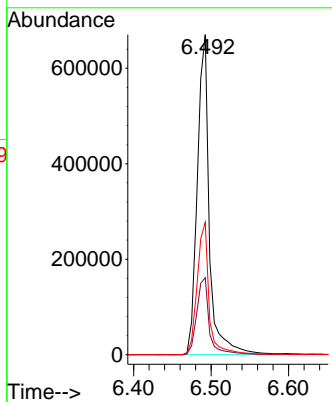
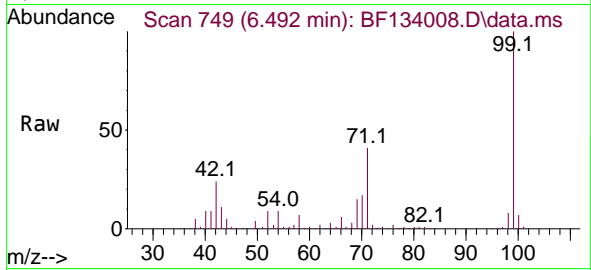


#7
 Phenol-d6
 Concen: 106.765 ng
 RT: 6.492 min Scan# 74
 Delta R.T. 0.000 min
 Lab File: BF134008.D
 Acq: 28 Jun 2023 02:09

Instrument :
 BNA_F
 ClientSampleId :
 WC-SCAN-02

Tgt Ion: 99 Resp: 725819

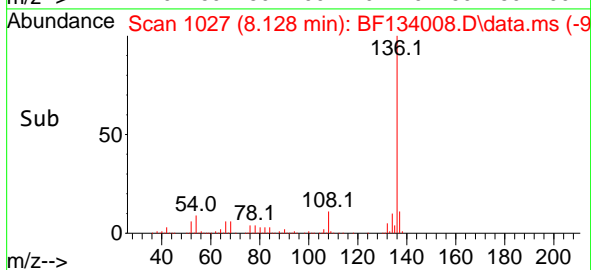
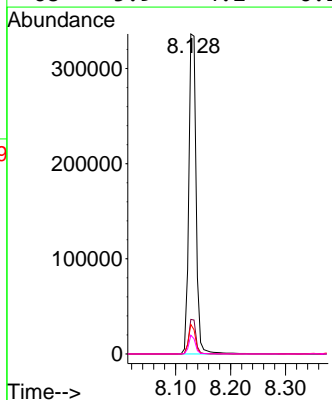
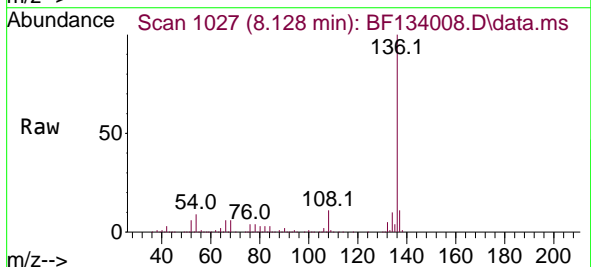
Ion	Ratio	Lower	Upper
99	100		
42	24.1	19.8	29.6
71	41.3	31.9	47.9

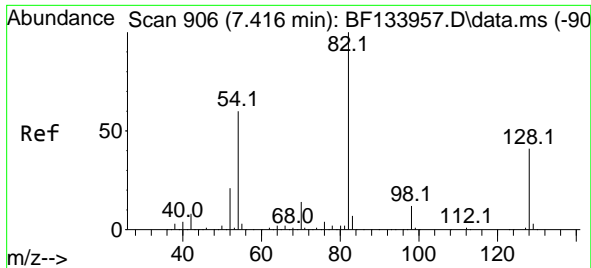


#21
 Naphthalene-d8
 Concen: 20.000 ng
 RT: 8.128 min Scan# 1027
 Delta R.T. -0.006 min
 Lab File: BF134008.D
 Acq: 28 Jun 2023 02:09

Tgt Ion: 136 Resp: 310576

Ion	Ratio	Lower	Upper
136	100		
137	10.8	8.6	12.8
54	9.2	6.5	9.7
68	5.9	4.2	6.2





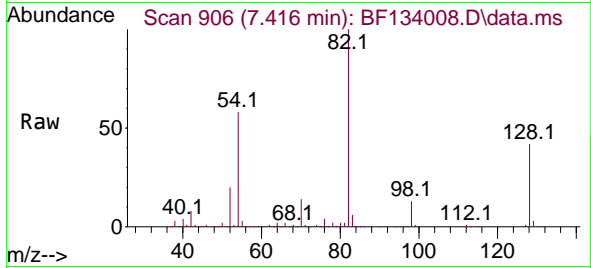
#23
 Nitrobenzene-d5
 Concen: 93.135 ng
 RT: 7.416 min Scan# 90
 Delta R.T. 0.000 min
 Lab File: BF134008.D
 Acq: 28 Jun 2023 02:09

Instrument :

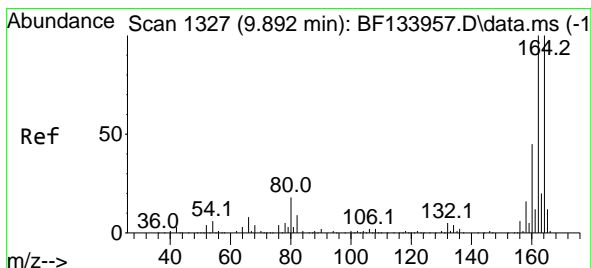
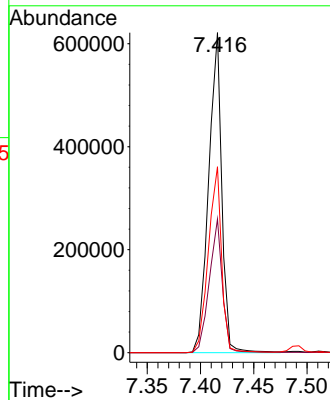
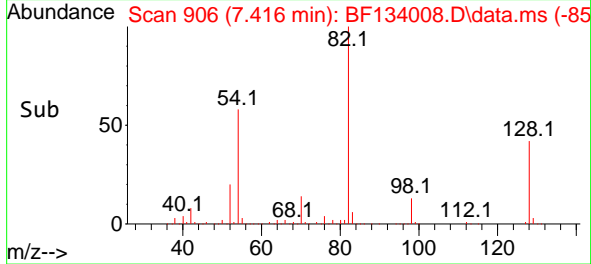
BNA_F

ClientSampleId :

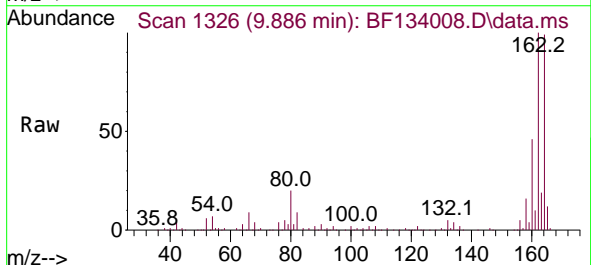
WC-SCAN-02



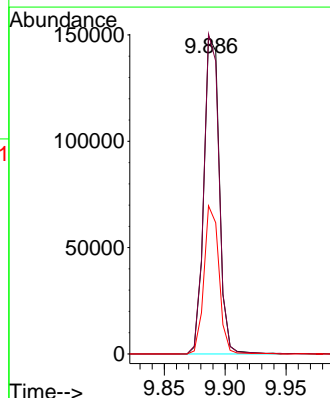
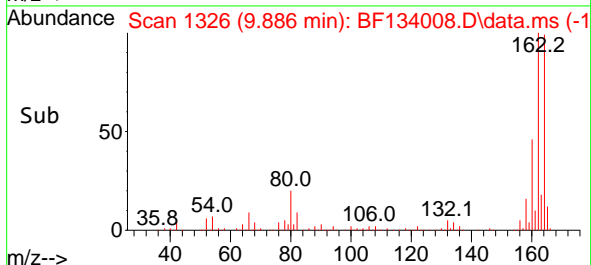
Tgt Ion: 82 Resp: 536595
 Ion Ratio Lower Upper
 82 100
 128 41.8 32.5 48.7
 54 58.1 48.2 72.2

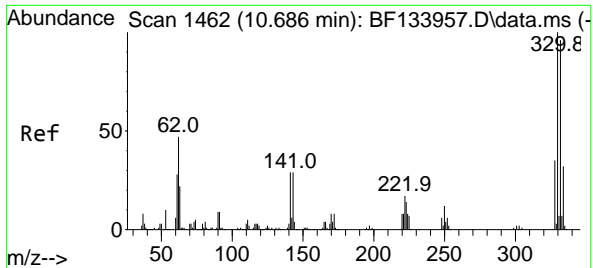


#39
 Acenaphthene-d10
 Concen: 20.000 ng
 RT: 9.886 min Scan# 1326
 Delta R.T. -0.006 min
 Lab File: BF134008.D
 Acq: 28 Jun 2023 02:09



Tgt Ion: 164 Resp: 131986
 Ion Ratio Lower Upper
 164 100
 162 100.6 80.0 120.0
 160 46.6 35.9 53.9





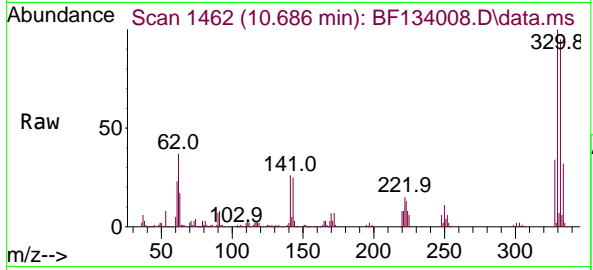
#42
 2,4,6-Tribromophenol
 Concen: 129.768 ng
 RT: 10.686 min Scan# 1462
 Delta R.T. 0.000 min
 Lab File: BF134008.D
 Acq: 28 Jun 2023 02:09

Instrument :

BNA_F

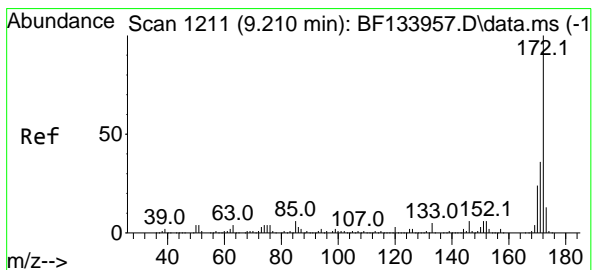
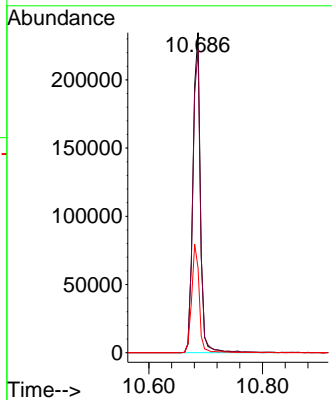
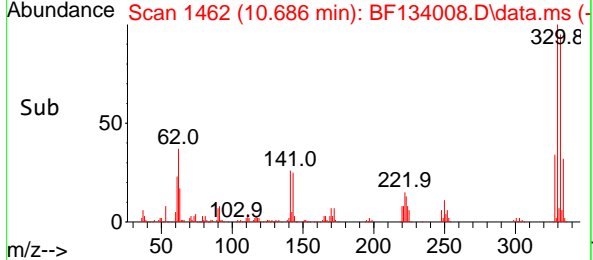
ClientSampleId :

WC-SCAN-02

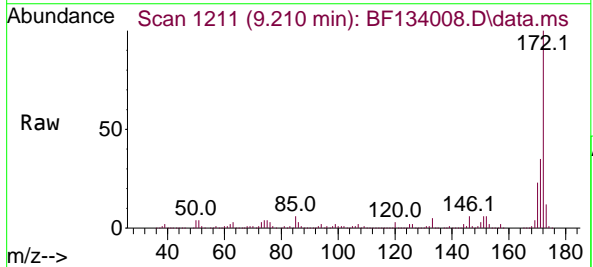


Tgt Ion: 330 Resp: 214745

Ion	Ratio	Lower	Upper
330	100		
332	96.8	77.0	115.6
141	33.9	26.3	39.5

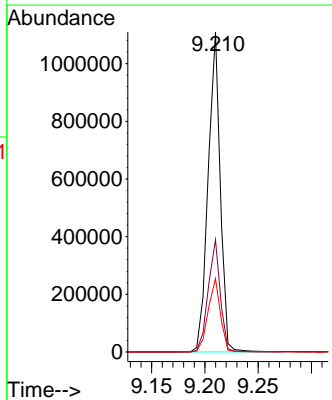
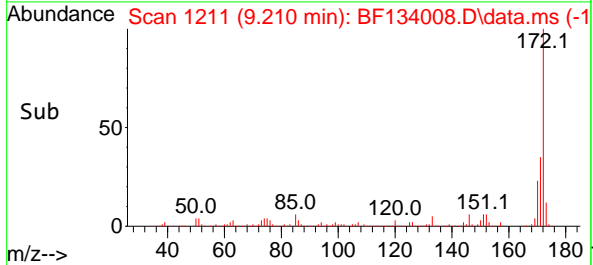


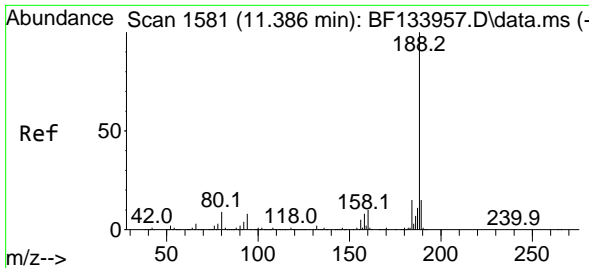
#45
 2-Fluorobiphenyl
 Concen: 97.359 ng
 RT: 9.210 min Scan# 1211
 Delta R.T. -0.000 min
 Lab File: BF134008.D
 Acq: 28 Jun 2023 02:09



Tgt Ion: 172 Resp: 883836

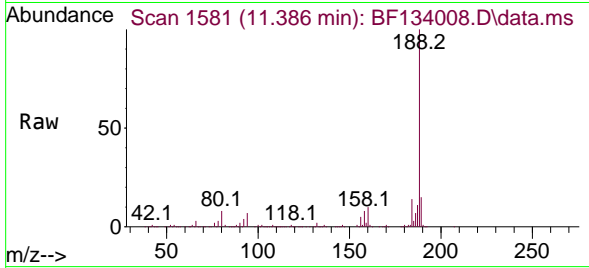
Ion	Ratio	Lower	Upper
172	100		
171	35.1	28.6	43.0
170	23.0	19.4	29.0



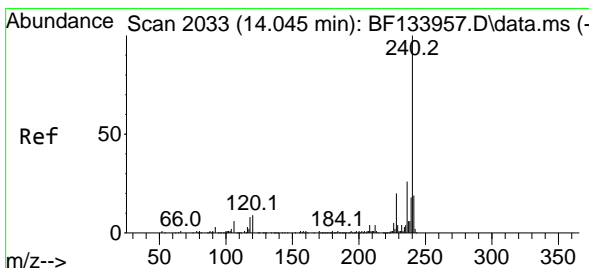
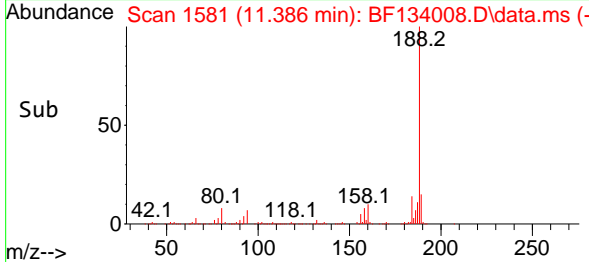
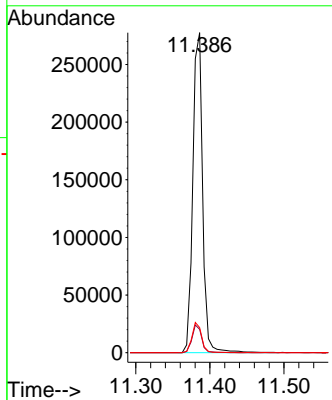


#64
 Phenanthrene-d10
 Concen: 20.000 ng
 RT: 11.386 min Scan# 11
 Delta R.T. 0.000 min
 Lab File: BF134008.D
 Acq: 28 Jun 2023 02:09

Instrument :
 BNA_F
 ClientSampleId :
 WC-SCAN-02

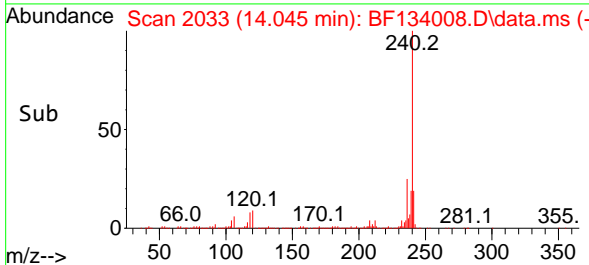
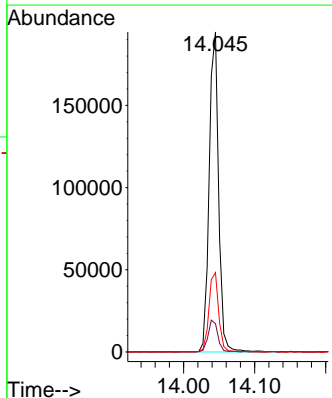
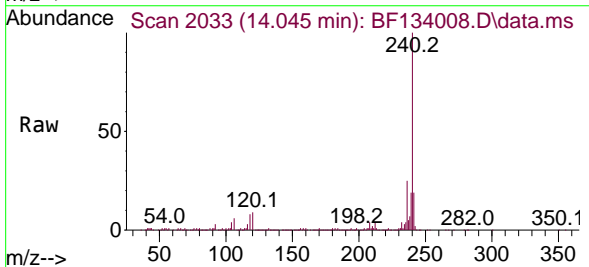


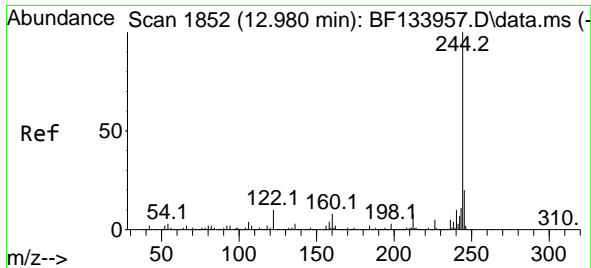
Tgt Ion:188 Resp: 255314
 Ion Ratio Lower Upper
 188 100
 94 7.3 6.4 9.6
 80 7.8 7.3 10.9



#76
 Chrysene-d12
 Concen: 20.000 ng
 RT: 14.045 min Scan# 2033
 Delta R.T. 0.000 min
 Lab File: BF134008.D
 Acq: 28 Jun 2023 02:09

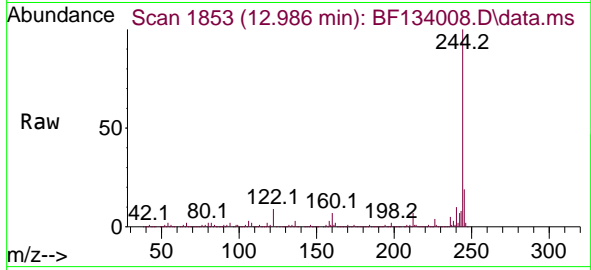
Tgt Ion:240 Resp: 180247
 Ion Ratio Lower Upper
 240 100
 120 8.9 7.4 11.0
 236 24.8 21.0 31.6



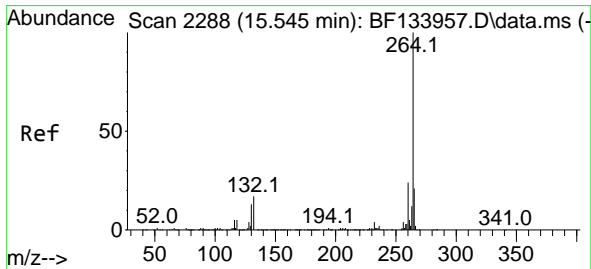
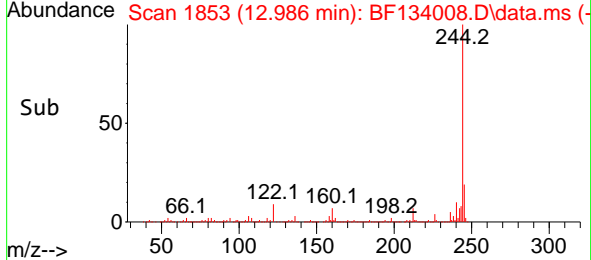
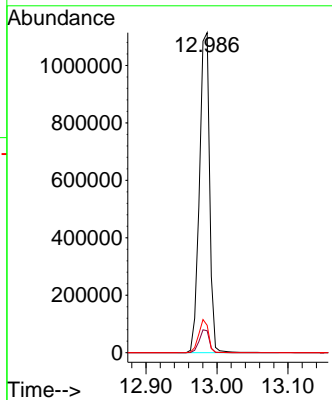


#79
 Terphenyl-d14
 Concen: 99.121 ng
 RT: 12.986 min Scan# 1110105
 Delta R.T. 0.006 min
 Lab File: BF134008.D
 Acq: 28 Jun 2023 02:09

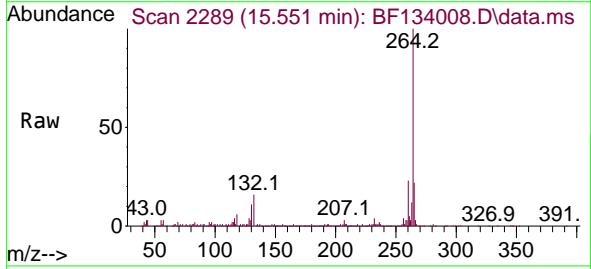
Instrument : BNA_F
 Client Sample Id : WC-SCAN-02



Tgt Ion:244 Resp: 1110105
 Ion Ratio Lower Upper
 244 100
 212 6.8 6.0 9.0
 122 8.6 8.3 12.5



#86
 Perylene-d12
 Concen: 20.000 ng
 RT: 15.551 min Scan# 2289
 Delta R.T. 0.006 min
 Lab File: BF134008.D
 Acq: 28 Jun 2023 02:09



Tgt Ion:264 Resp: 139533
 Ion Ratio Lower Upper
 264 100
 260 22.6 19.5 29.3
 265 21.9 16.6 25.0

