

Data Path : Z:\HPCHEM1\BNA_F\DATA\BF070915\
 Data File : BF080403.D
 Acq On : 9 Jul 2015 16:18
 Operator : TP/UM
 Sample : G2866-10DL 10X
 Misc :
 ALS Vial : 3 Sample Multiplier: 1

Instrument :
 BNA_F
ClientSampleId :
 SB-04-6.5-7.0-070115DL

Manual Integrations
APPROVED
 mohammad
 7/10/2015 8:01:56 AM

Quant Time: Jul 10 01:02:27 2015
 Quant Method : Z:\HPCHEM1\BNA_F\METHODS\8270-BF070615.M
 Quant Title : ASP BNA STANDARDS FOR 5 POINT CALIBRATION
 QLast Update : Fri Jul 10 00:56:59 2015
 Response via : Initial Calibration

Internal Standards	R.T.	QIon	Response	Conc	Units	Dev(Min)
1) 1,4-Dichlorobenzene-d4	7.20	152	33875	20.00	ng	0.00
21) Naphthalene-d8	8.49	136	122530	20.00	ng	0.00
38) Acenaphthene-d10	10.26	164	71930	20.00	ng	0.00
63) Phenanthrene-d10	11.77	188	134577	20.00	ng	0.00
75) Chrysene-d12	14.69	240	163978	20.00	ng	-0.14
86) Perylene-d12	16.51	264	161237	20.00	ng	-0.23
System Monitoring Compounds						
5) 2-Fluorophenol	5.80	112	24052	13.00	ng	0.00
7) Phenol-d6	6.81	99	32269	13.16	ng	0.00
23) Nitrobenzene-d5	7.76	82	36529	17.39	ng	0.00
41) 2,4,6-Tribromophenol	11.06	330	7077	9.40	ng	0.00
44) 2-Fluorobiphenyl	9.57	172	40513	7.60	ng	0.00
78) Terphenyl-d14	13.44	244	52819	7.51	ng	-0.07
Target Compounds						
31) Naphthalene	8.53	128	32950	5.24	ng	# 1
37) 2-Methylnaphthalene	9.31	142	459056	114.56	ng	# 93
57) Fluorene	10.82	166	127060	21.40	ng	# 79
70) Phenanthrene	11.79	178	455812	56.47	ng	97
74) Fluoranthene	13.05	202	100653	11.61	ng	95
77) Pyrene	13.29	202	98140m	9.89	ng	
80) Benzo(a)anthracene	14.68	228	32148	3.25	ng	98
82) Chrysene	14.73	228	23329	2.52	ng	99

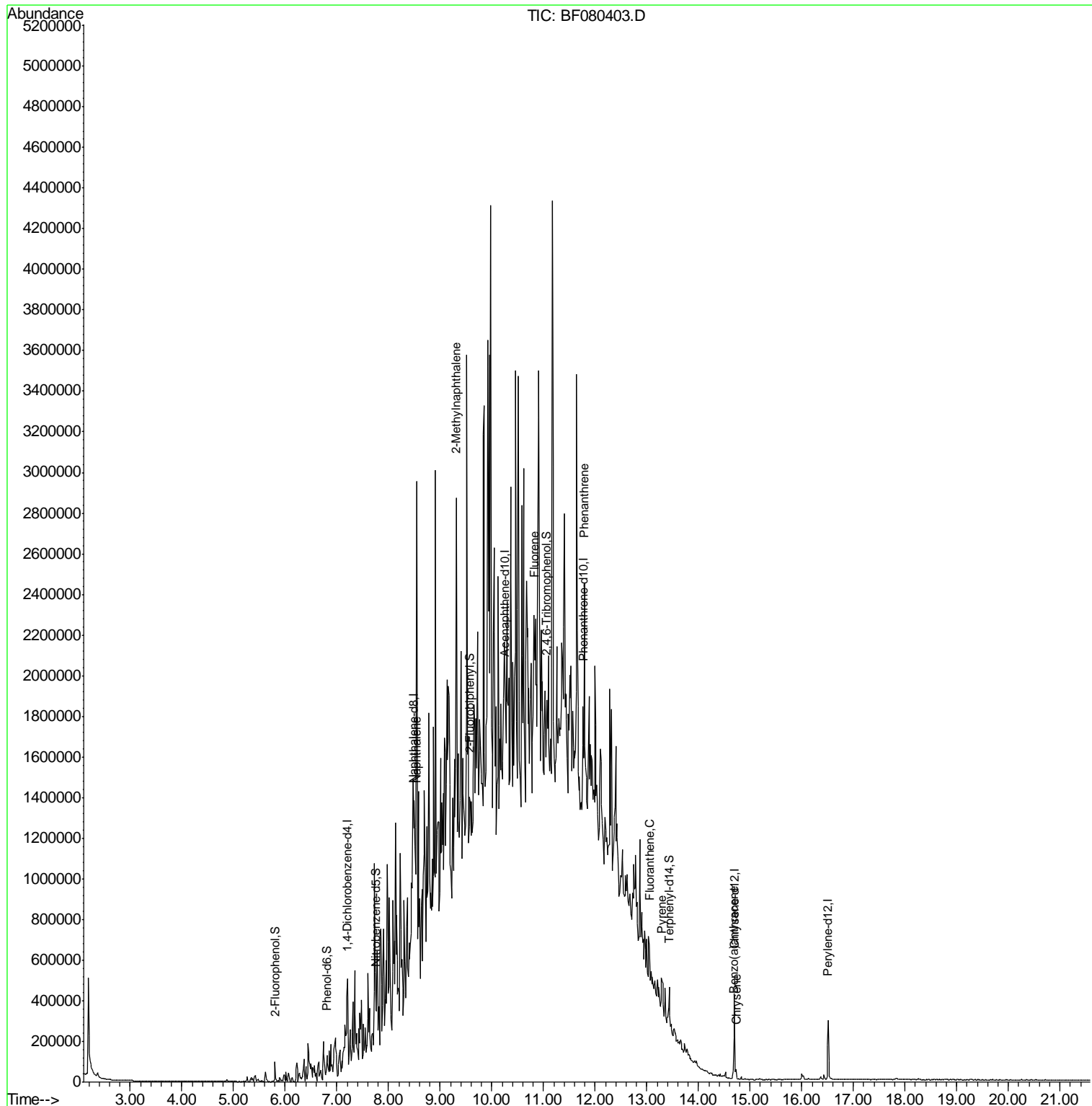
(#) = qualifier out of range (m) = manual integration (+) = signals summed

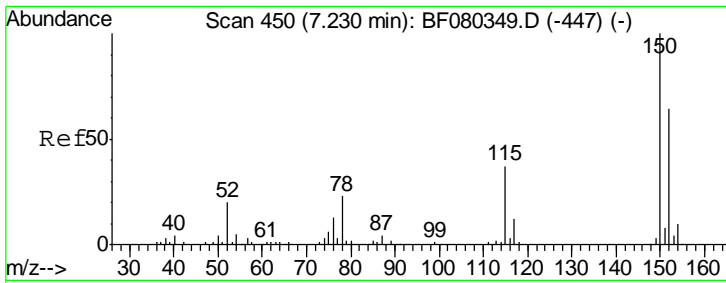
Data Path : Z:\HPCHEM1\BNA_F\DATA\BF070915\
 Data File : BF080403.D
 Acq On : 9 Jul 2015 16:18
 Operator : TP/UM
 Sample : G2866-10DL 10X
 Misc :
 ALS Vial : 3 Sample Multiplier: 1

Instrument :
 BNA_F
Client Sampled :
 SB-04-6.5-7.0-070115DL

Manual Integrations
APPROVED
 mohammad
 7/10/2015 8:01:56 AM

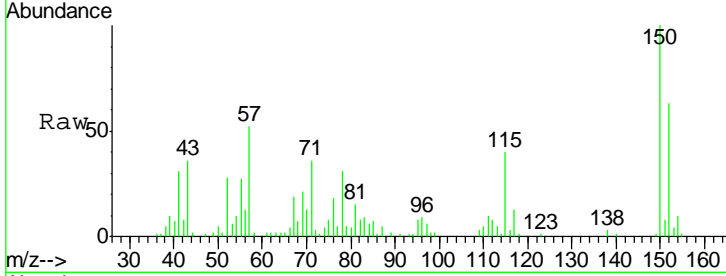
Quant Time: Jul 10 01:02:27 2015
 Quant Method : Z:\HPCHEM1\BNA_F\METHODS\8270-BF070615.M
 Quant Title : ASP BNA STANDARDS FOR 5 POINT CALIBRATION
 QLast Update : Fri Jul 10 00:56:59 2015
 Response via : Initial Calibration





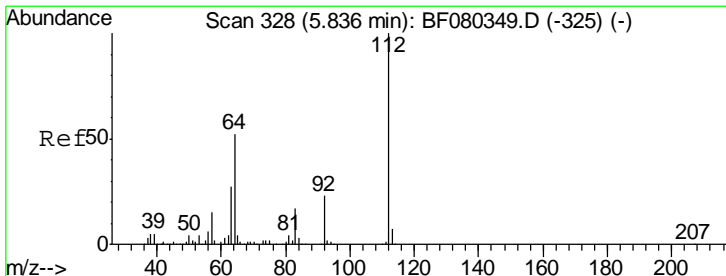
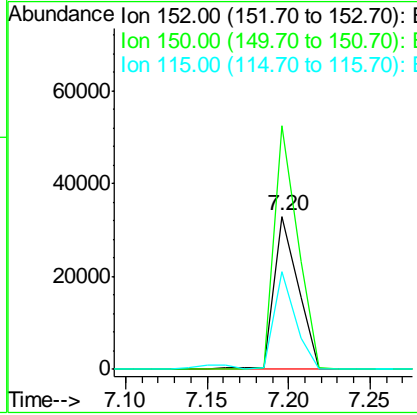
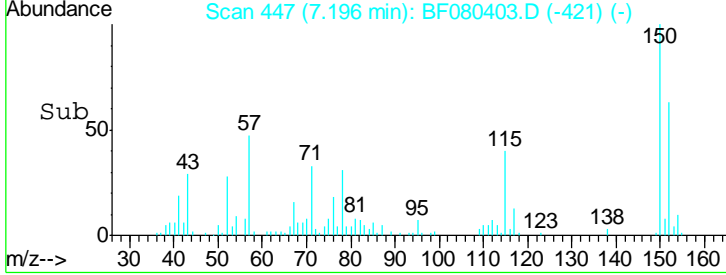
#1
 1,4-Dichlorobenzene-d4
 Concen: 20.00 ng
 RT: 7.20 min Scan# 447
 Delta R.T. 0.00 min
 Lab File: BF080403.D
 Acq: 9 Jul 2015 16:18

Instrument :
 BNA_F
ClientSampled :
 SB-04-6.5-7.0-070115DL

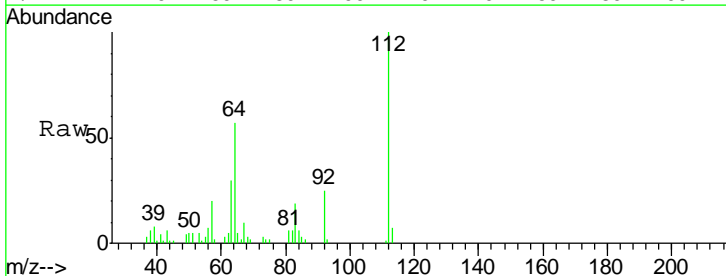


Tgt Ion	Resp	Lower	Upper
152	33875		
150	100	124.7	187.1
115	64.1	45.7	68.5

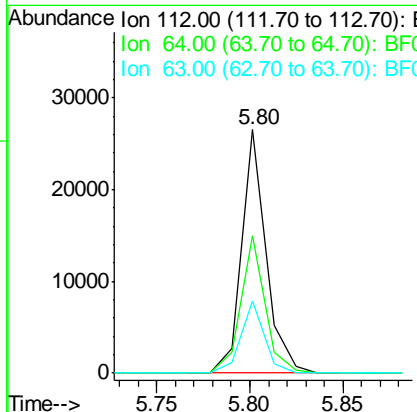
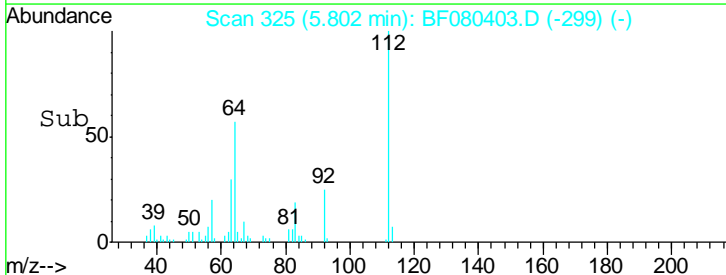
Manual Integrations
APPROVED
 mohammad
 7/10/2015 8:01:56 AM

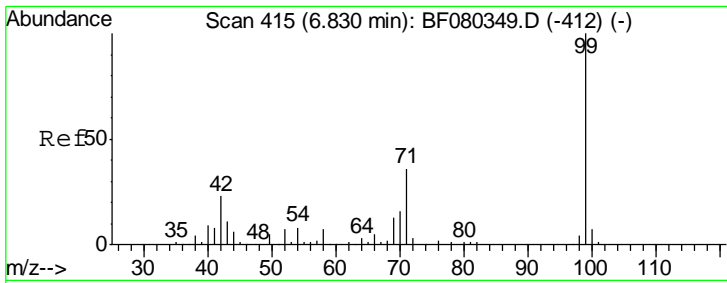


#5
 2-Fluorophenol
 Concen: 13.00 ng
 RT: 5.80 min Scan# 325
 Delta R.T. 0.00 min
 Lab File: BF080403.D
 Acq: 9 Jul 2015 16:18



Tgt Ion	Resp	Lower	Upper
112	24052		
64	100	41.8	62.6
63	56.6	21.5	32.3



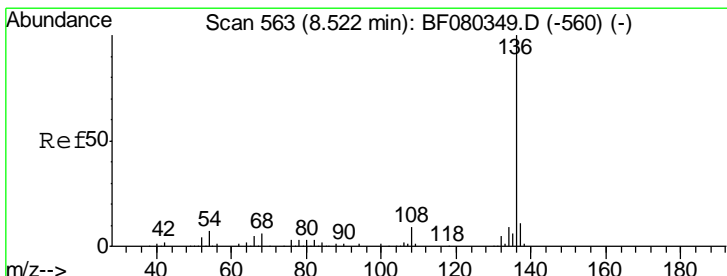
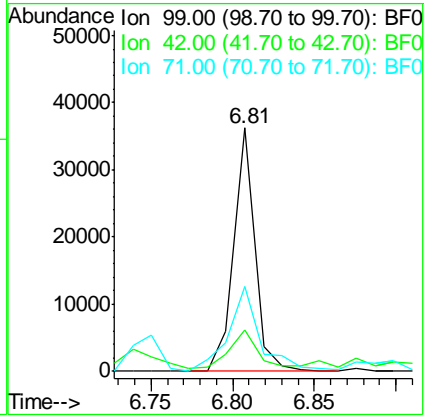
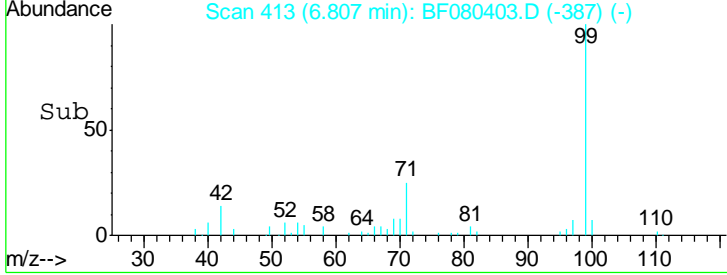
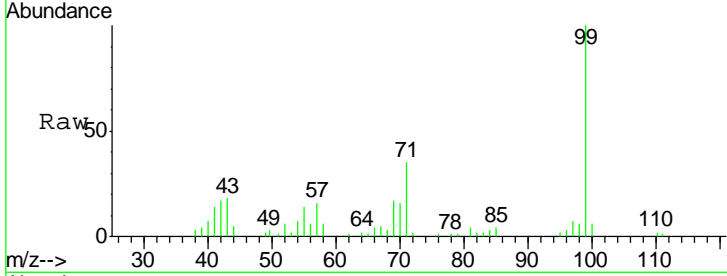


#7
 Phenol-d6
 Concen: 13.16 ng
 RT: 6.81 min Scan# 413
 Delta R.T. 0.00 min
 Lab File: BF080403.D
 Acq: 9 Jul 2015 16:18

Instrument :
 BNA_F
ClientSampled :
 SB-04-6.5-7.0-070115DL

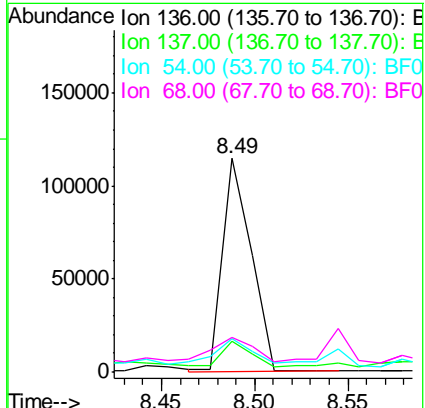
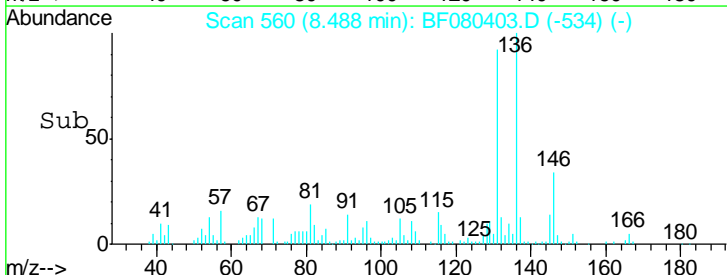
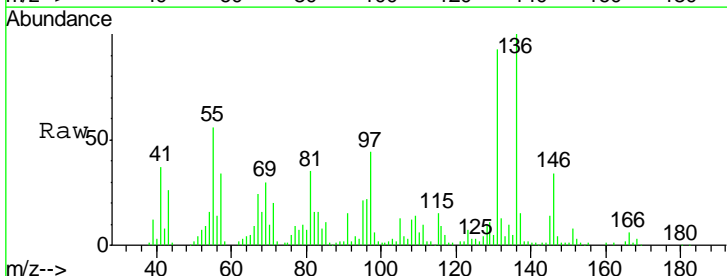
Tgt Ion	Resp	Lower	Upper
99	32269		
99	100		
42	17.0	18.5	27.7#
71	34.8	28.5	42.7

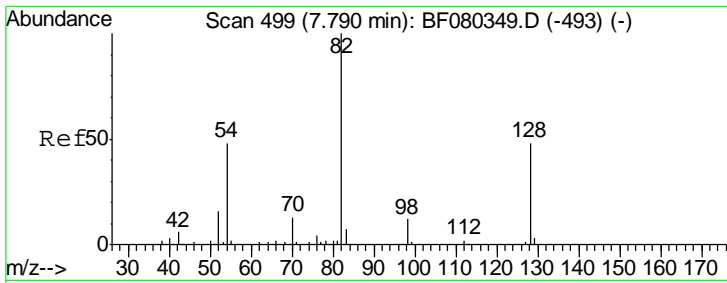
Manual Integrations
APPROVED
 mohammad
 7/10/2015 8:01:56 AM



#21
 Naphthalene-d8
 Concen: 20.00 ng
 RT: 8.49 min Scan# 560
 Delta R.T. 0.00 min
 Lab File: BF080403.D
 Acq: 9 Jul 2015 16:18

Tgt Ion	Resp	Lower	Upper
136	122530		
136	100		
137	14.7	8.5	12.7#
54	15.6	5.8	8.8#
68	16.2	4.6	6.8#



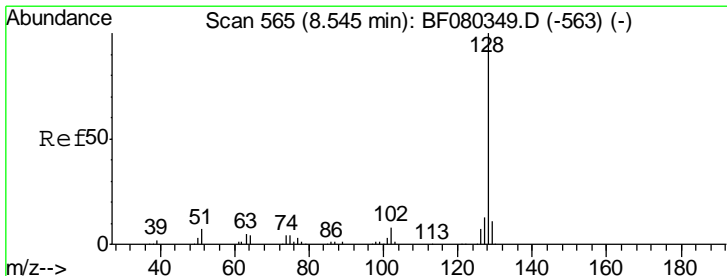
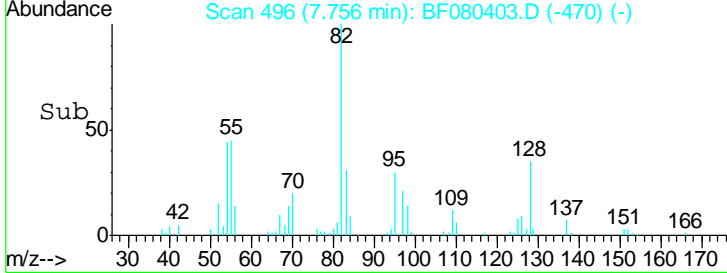
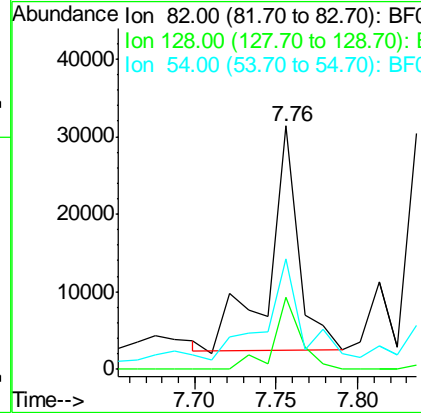
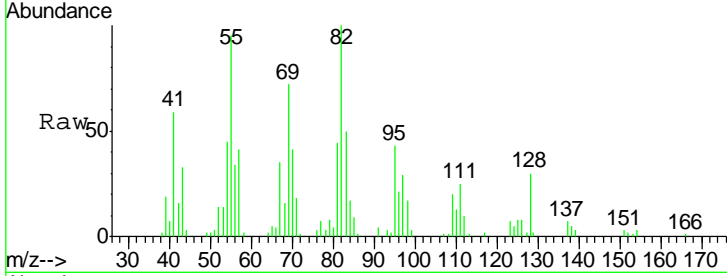


#23
 Nitrobenzene-d5
 Concen: 17.39 ng
 RT: 7.76 min Scan# 496
 Delta R.T. 0.00 min
 Lab File: BF080403.D
 Acq: 9 Jul 2015 16:18

Instrument :
 BNA_F
 ClientSampled :
 SB-04-6.5-7.0-070115DL

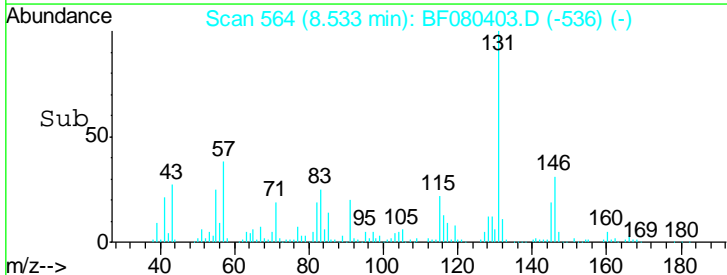
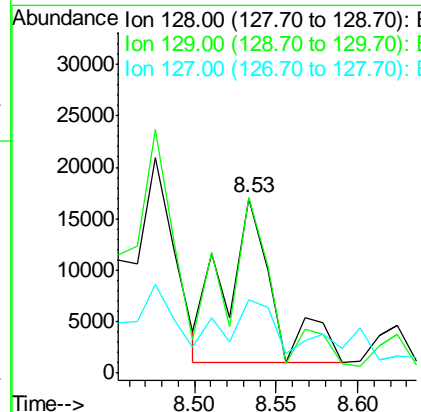
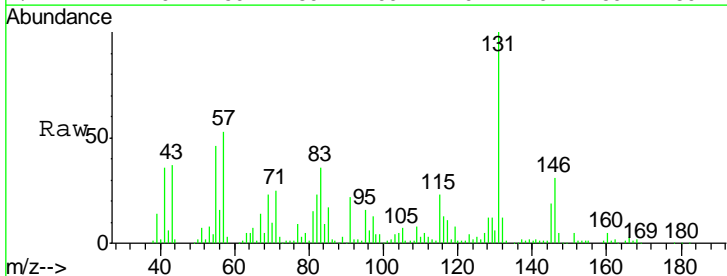
Tgt Ion	Resp	Lower	Upper
82	36529		
82	100		
128	29.7	38.4	57.6#
54	45.3	38.2	57.2

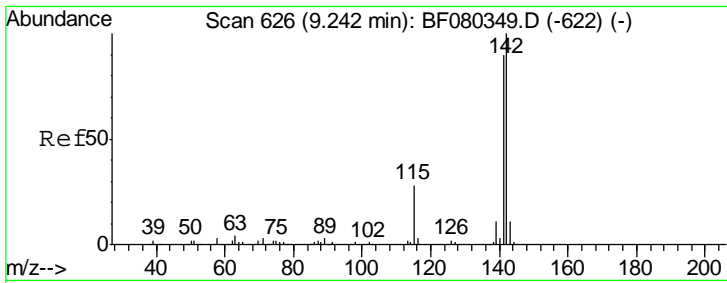
Manual Integrations
 APPROVED
 mohammad
 7/10/2015 8:01:56 AM



#31
 Naphthalene
 Concen: 5.24 ng
 RT: 8.53 min Scan# 564
 Delta R.T. 0.02 min
 Lab File: BF080403.D
 Acq: 9 Jul 2015 16:18

Tgt Ion	Resp	Lower	Upper
128	32950		
128	100		
129	100.9	8.8	13.2#
127	41.7	10.4	15.6#



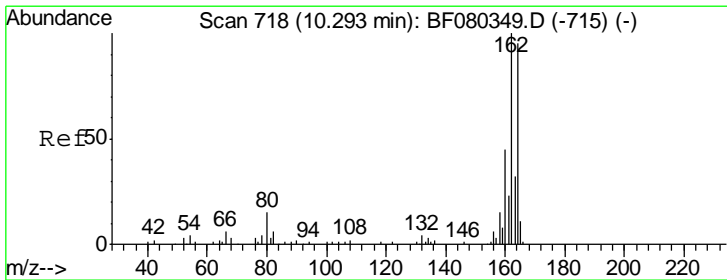
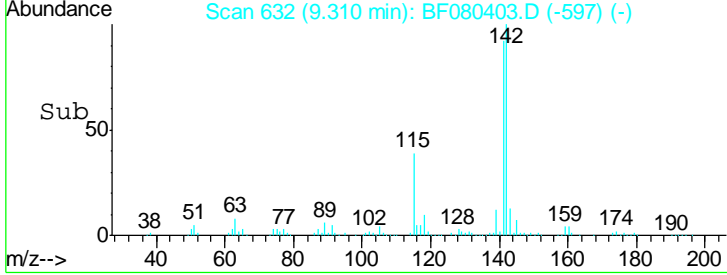
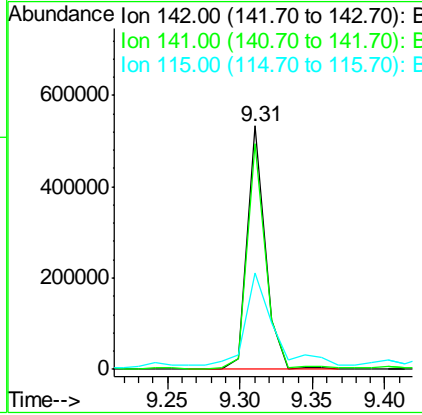
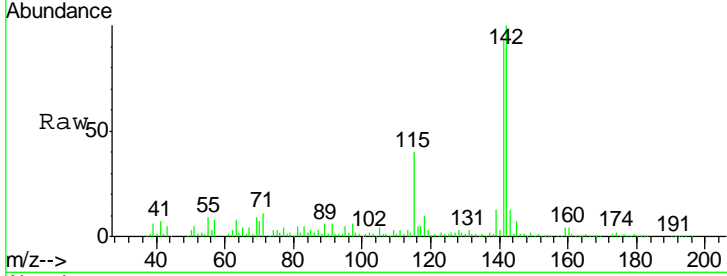


#37
 2-Methylnaphthalene
 Concen: 114.56 ng
 RT: 9.31 min Scan# 632
 Delta R.T. 0.10 min
 Lab File: BF080403.D
 Acq: 9 Jul 2015 16:18

Instrument :
 BNA_F
 ClientSampled :
 SB-04-6.5-7.0-070115DL

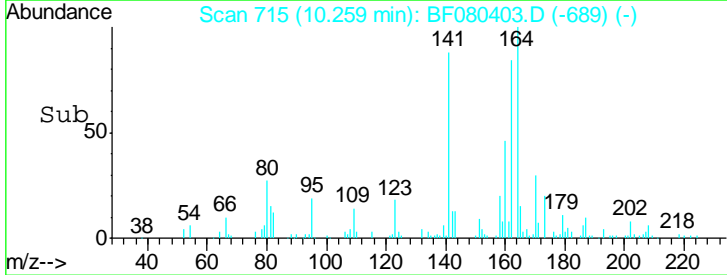
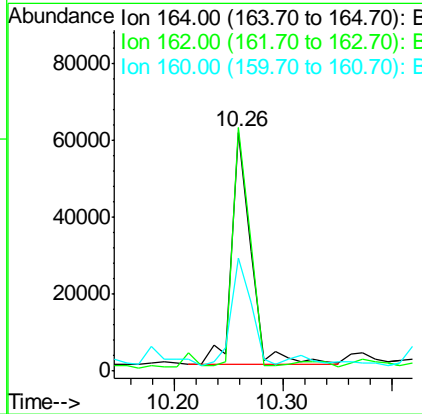
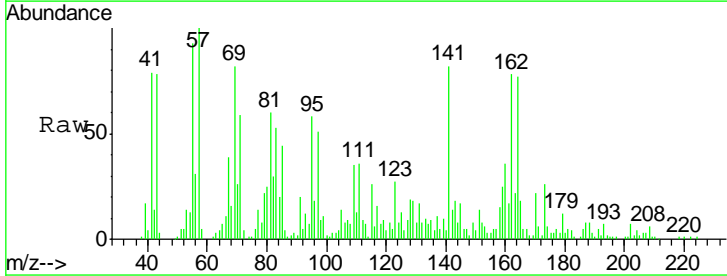
Tgt Ion	Resp	Lower	Upper
142	100		
141	92.5	71.8	107.8
115	39.5	22.6	34.0

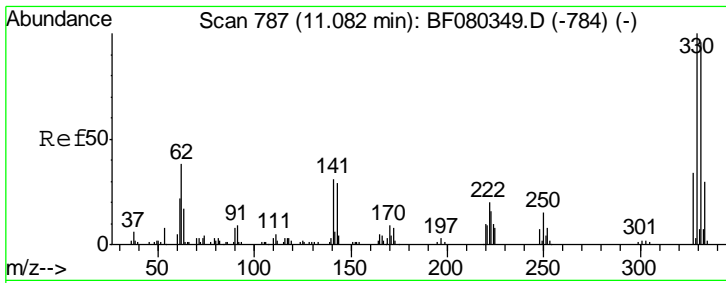
Manual Integrations
APPROVED
 mohammad
 7/10/2015 8:01:56 AM



#38
 Acenaphthene-d10
 Concen: 20.00 ng
 RT: 10.26 min Scan# 715
 Delta R.T. 0.00 min
 Lab File: BF080403.D
 Acq: 9 Jul 2015 16:18

Tgt Ion	Resp	Lower	Upper
164	100		
162	101.8	84.5	126.7
160	47.1	37.7	56.5



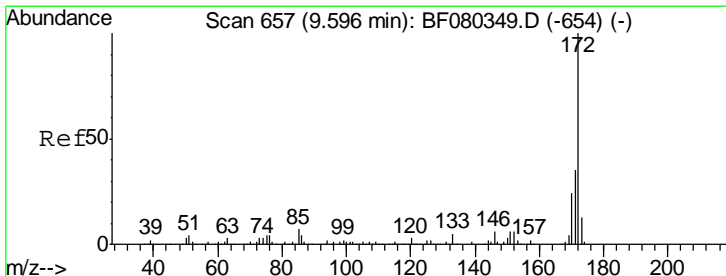
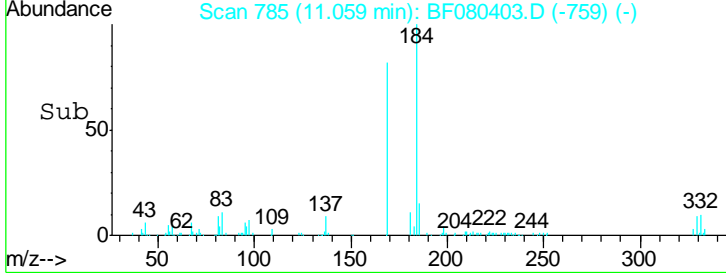
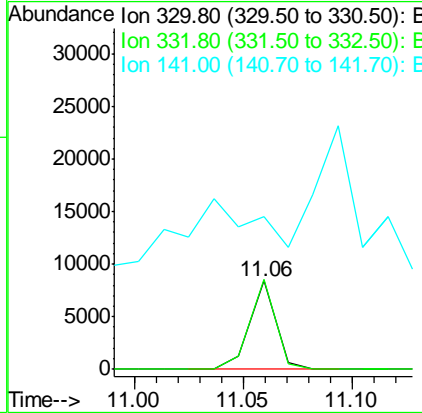
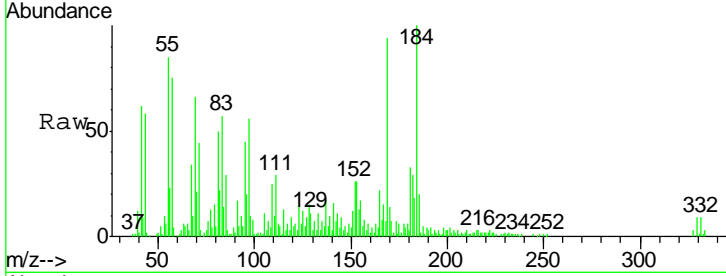


#41
 2,4,6-Tribromophenol
 Concen: 9.40 ng
 RT: 11.06 min Scan# 785
 Delta R.T. 0.00 min
 Lab File: BF080403.D
 Acq: 9 Jul 2015 16:18

Instrument :
 BNA_F
ClientSampled :
 SB-04-6.5-7.0-070115DL

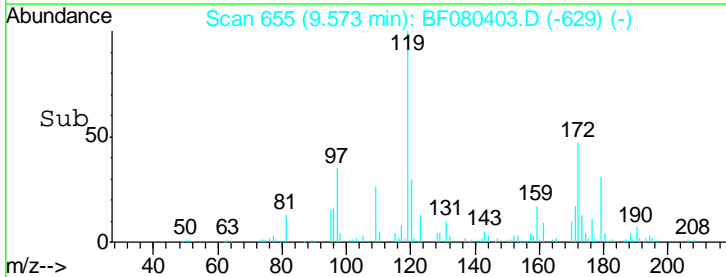
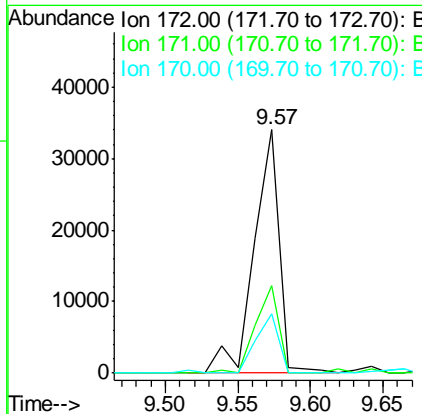
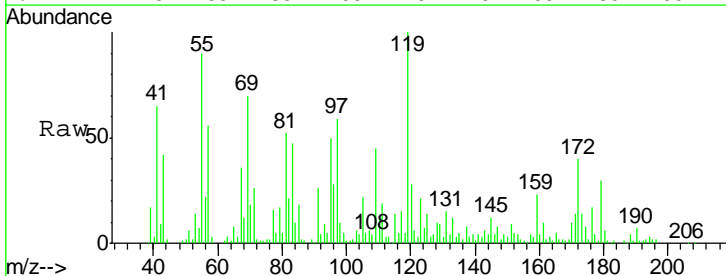
Tgt Ion	Resp	Lower	Upper
330	100		
332	101.1	77.0	115.4
141	0.0	29.6	44.4#

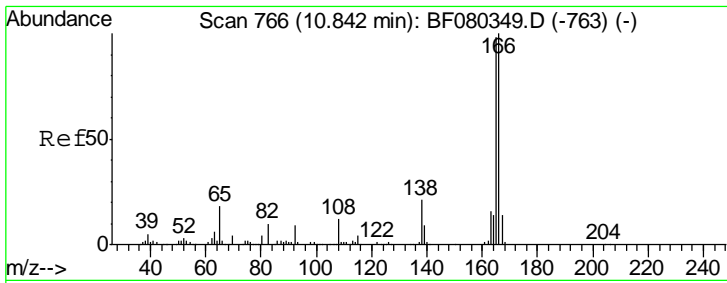
Manual Integrations
APPROVED
 mohammad
 7/10/2015 8:01:56 AM



#44
 2-Fluorobiphenyl
 Concen: 7.60 ng
 RT: 9.57 min Scan# 655
 Delta R.T. 0.00 min
 Lab File: BF080403.D
 Acq: 9 Jul 2015 16:18

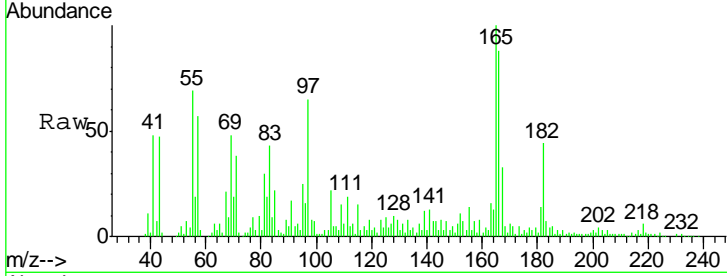
Tgt Ion	Resp	Lower	Upper
172	100		
171	35.8	28.3	42.5
170	24.5	19.1	28.7





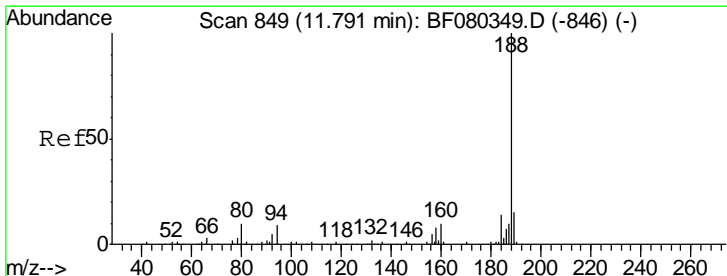
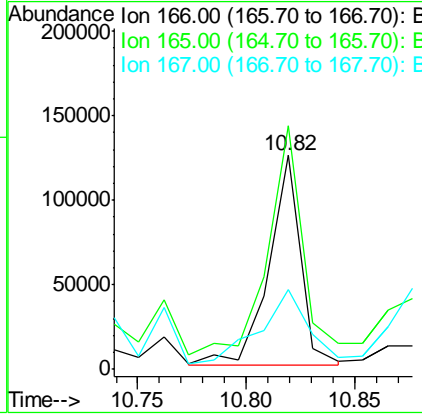
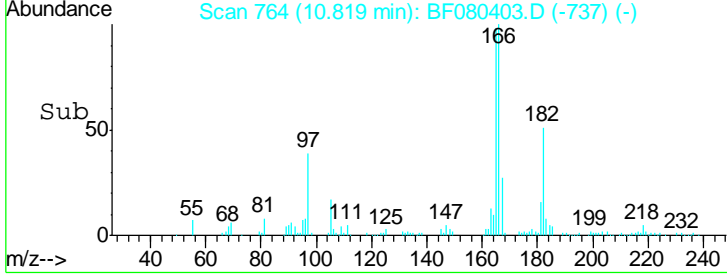
#57
 Fluorene
 Concen: 21.40 ng
 RT: 10.82 min Scan# 764
 Delta R.T. 0.01 min
 Lab File: BF080403.D
 Acq: 9 Jul 2015 16:18

Instrument :
 BNA_F
 ClientSampleID :
 SB-04-6.5-7.0-070115DL

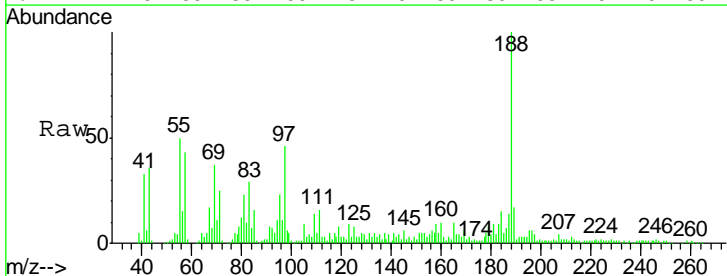


Tgt Ion	Resp	Lower	Upper
166	127060		
165	113.8	78.6	117.8
167	37.5	10.8	16.2#

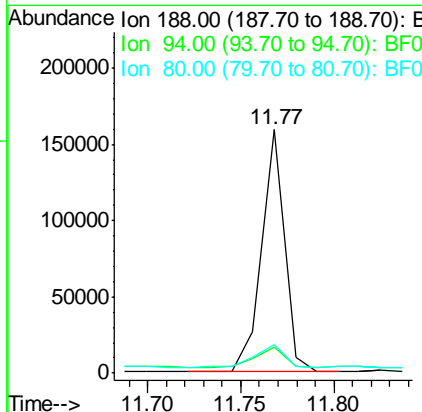
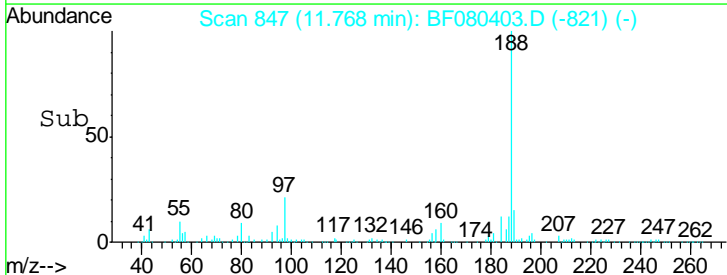
Manual Integrations
APPROVED
 mohammad
 7/10/2015 8:01:56 AM

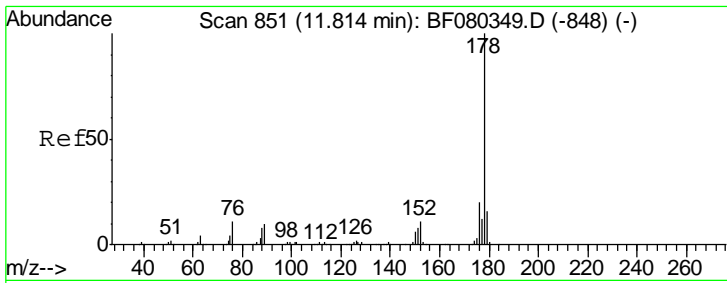


#63
 Phenanthrene-d10
 Concen: 20.00 ng
 RT: 11.77 min Scan# 847
 Delta R.T. 0.00 min
 Lab File: BF080403.D
 Acq: 9 Jul 2015 16:18



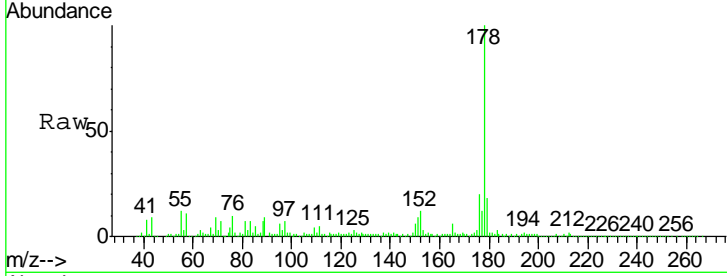
Tgt Ion	Resp	Lower	Upper
188	134577		
94	10.9	7.5	11.3
80	11.9	8.3	12.5





#70
 Phenanthrene
 Concen: 56.47 ng
 RT: 11.79 min Scan# 849
 Delta R.T. 0.00 min
 Lab File: BF080403.D
 Acq: 9 Jul 2015 16:18

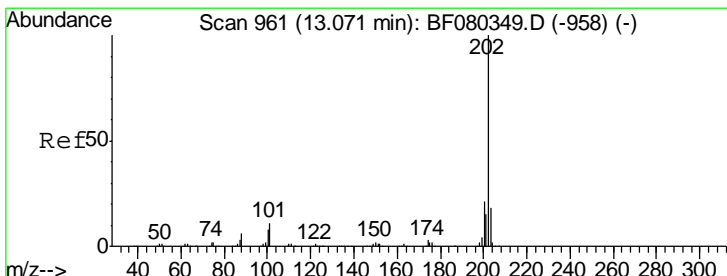
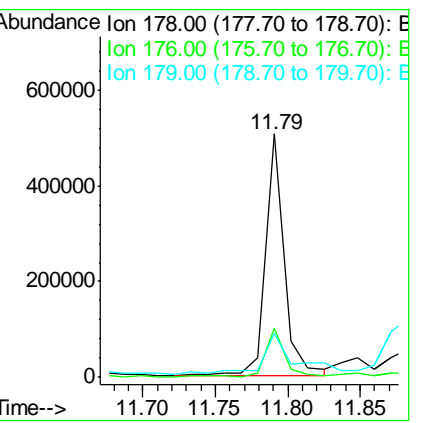
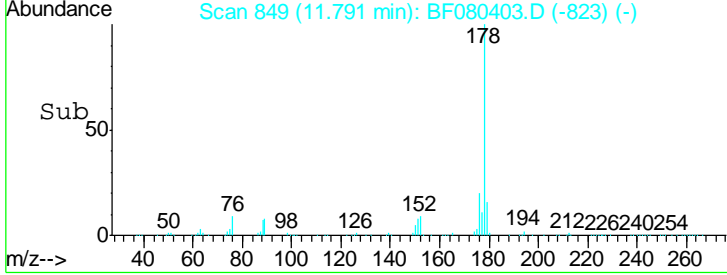
Instrument :
 BNA_F
ClientSampled :
 SB-04-6.5-7.0-070115DL



Tgt Ion: 178 Resp: 455812

Ion	Ratio	Lower	Upper
178	100		
176	20.0	16.1	24.1
179	18.0	12.6	18.8

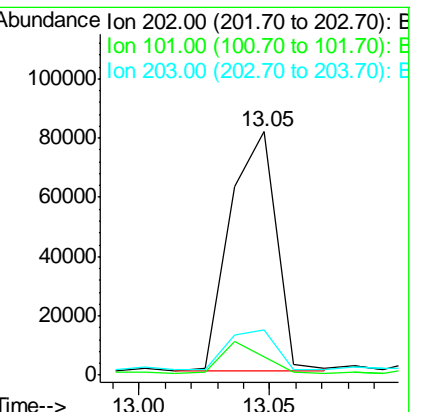
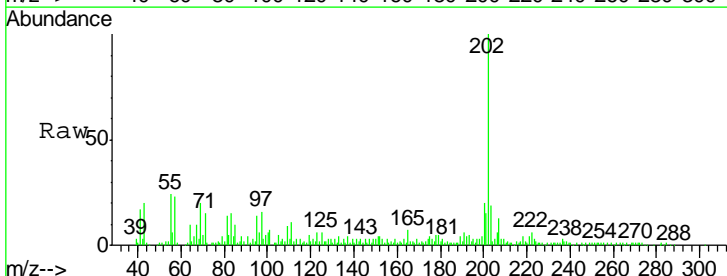
Manual Integrations
APPROVED
 mohammad
 7/10/2015 8:01:56 AM

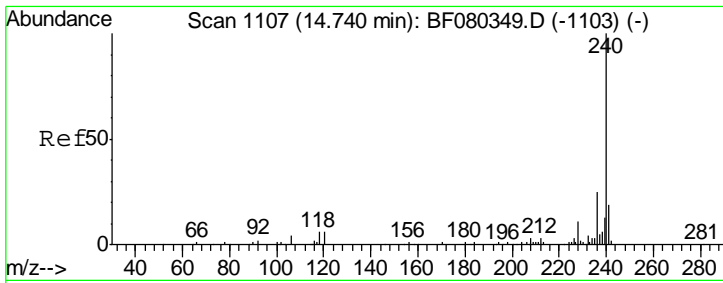


#74
 Fluoranthene
 Concen: 11.61 ng
 RT: 13.05 min Scan# 959
 Delta R.T. -0.03 min
 Lab File: BF080403.D
 Acq: 9 Jul 2015 16:18

Tgt Ion: 202 Resp: 100653

Ion	Ratio	Lower	Upper
202	100		
101	7.5	0.0	31.0
203	18.6	0.0	37.6



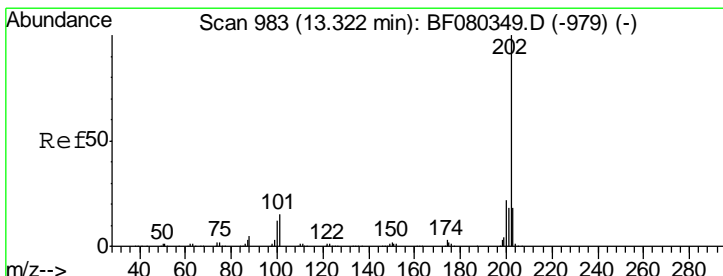
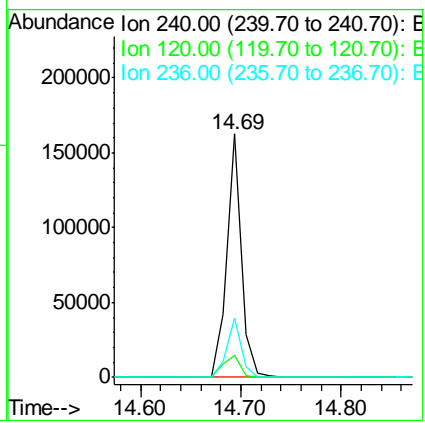
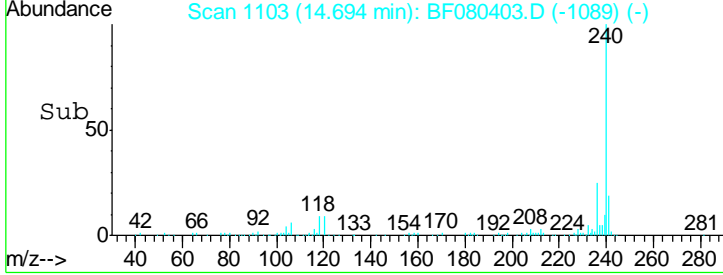
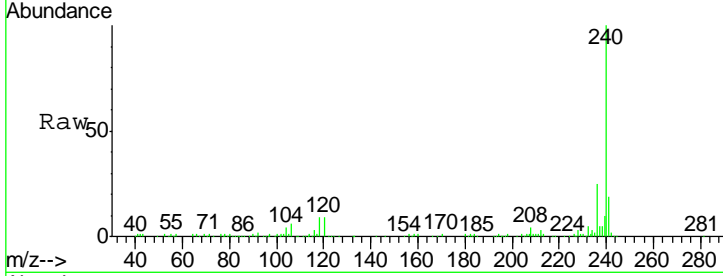


#75
 Chrysene-d12
 Concen: 20.00 ng
 RT: 14.69 min Scan# 1103
 Delta R.T. -0.14 min
 Lab File: BF080403.D
 Acq: 9 Jul 2015 16:18

Instrument :
 BNA_F
ClientSampled :
 SB-04-6.5-7.0-070115DL

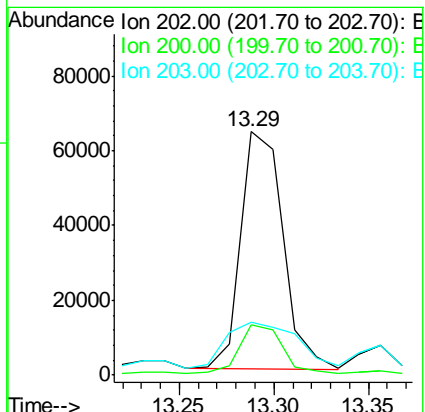
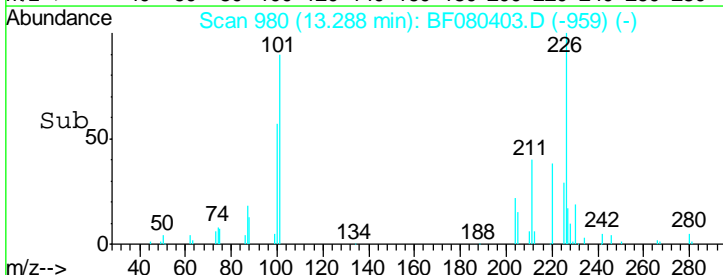
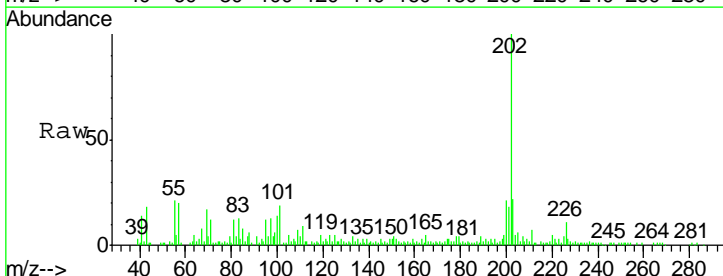
Tgt Ion	Resp	Lower	Upper
240	100		
120	9.3	5.1	7.7#
236	24.6	20.4	30.6

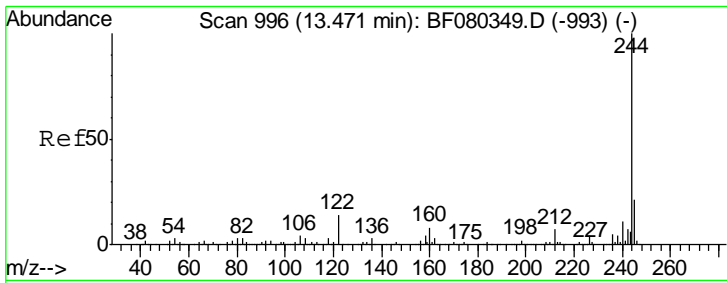
Manual Integrations
APPROVED
 mohammad
 7/10/2015 8:01:56 AM



#77
 Pyrene
 Concen: 9.89 ng m
 RT: 13.29 min Scan# 980
 Delta R.T. -0.06 min
 Lab File: BF080403.D
 Acq: 9 Jul 2015 16:18

Tgt Ion	Resp	Lower	Upper
202	100		
200	20.9	17.2	25.8
203	21.6	14.3	21.5#



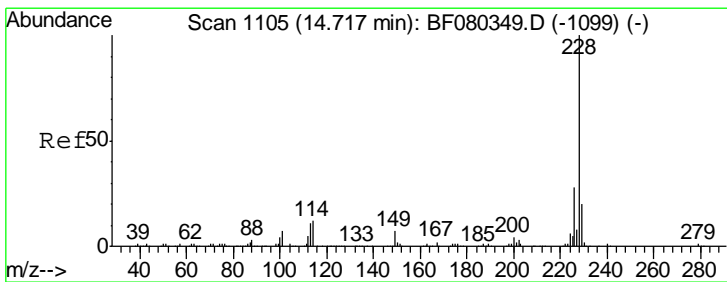
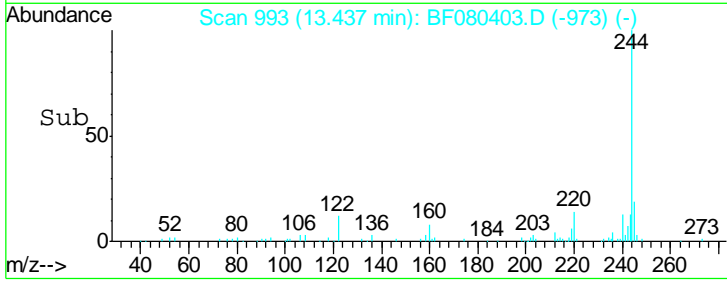
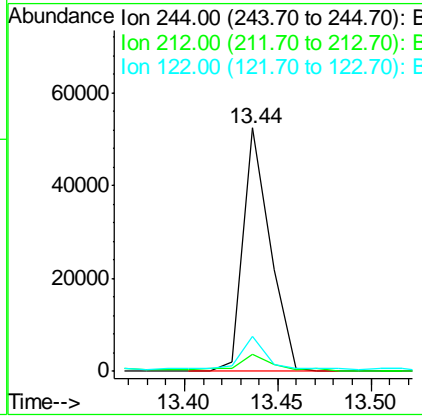
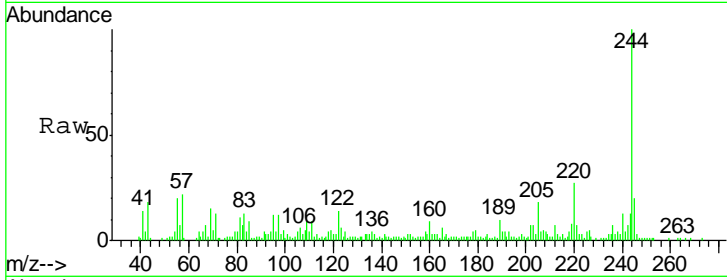


#78
 Terphenyl-d14
 Concen: 7.51 ng
 RT: 13.44 min Scan# 993
 Delta R.T. -0.07 min
 Lab File: BF080403.D
 Acq: 9 Jul 2015 16:18

Instrument :
 BNA_F
ClientSampled :
 SB-04-6.5-7.0-070115DL

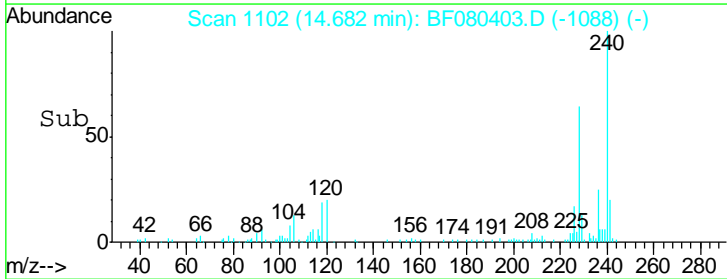
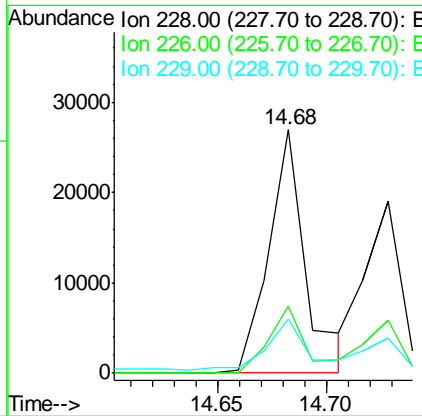
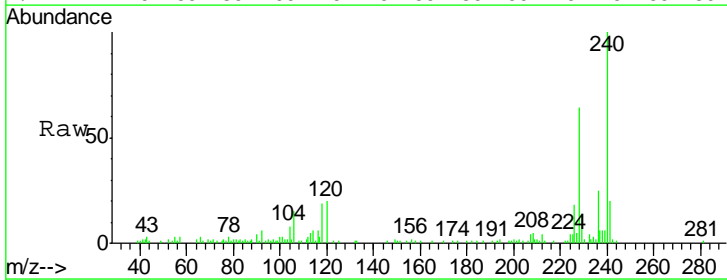
Tgt Ion	Resp	Lower	Upper
244	100		
212	6.9	5.8	8.8
122	14.1	11.1	16.7

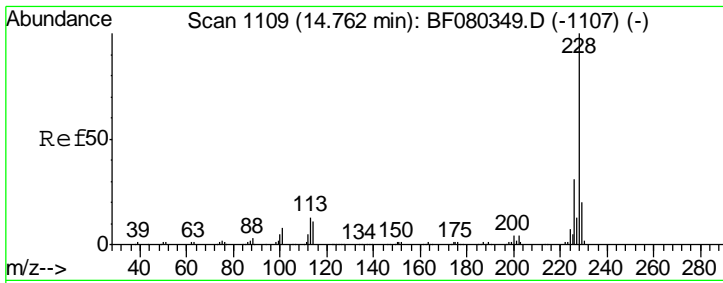
Manual Integrations
APPROVED
 mohammad
 7/10/2015 8:01:56 AM



#80
 Benzo(a)anthracene
 Concen: 3.25 ng
 RT: 14.68 min Scan# 1102
 Delta R.T. -0.14 min
 Lab File: BF080403.D
 Acq: 9 Jul 2015 16:18

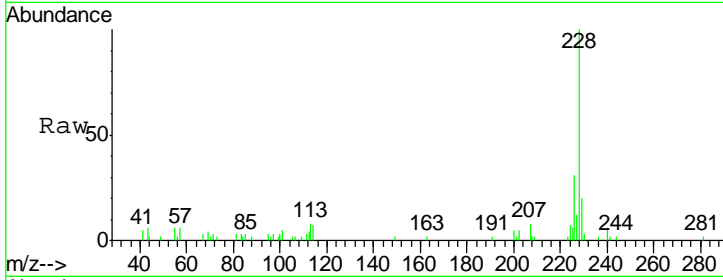
Tgt Ion	Resp	Lower	Upper
228	100		
226	27.4	22.2	33.4
229	22.0	16.0	24.0





#82
 Chrysene
 Concen: 2.52 ng
 RT: 14.73 min Scan# 1106
 Delta R.T. -0.14 min
 Lab File: BF080403.D
 Acq: 9 Jul 2015 16:18

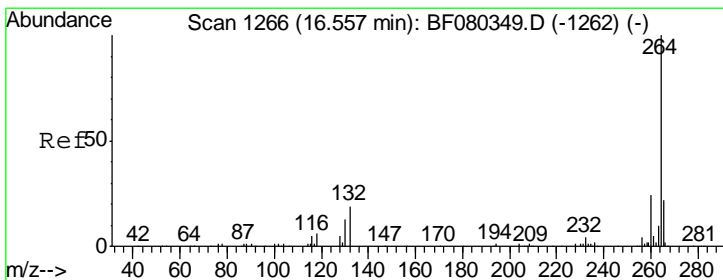
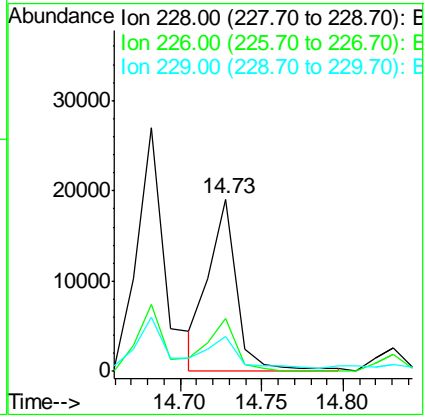
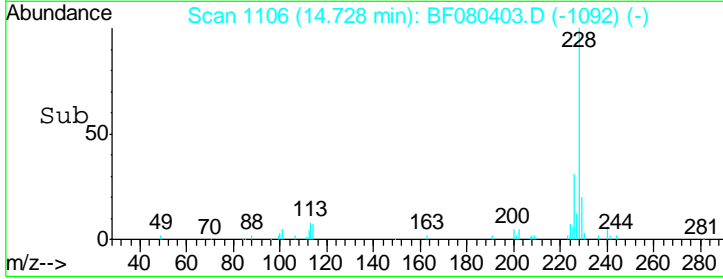
Instrument :
 BNA_F
 ClientSampled :
 SB-04-6.5-7.0-070115DL



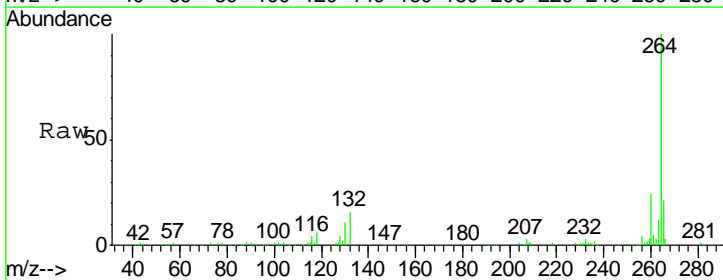
Tgt Ion: 228 Resp: 23329

Ion	Ratio	Lower	Upper
228	100		
226	30.9	25.0	37.4
229	20.3	16.1	24.1

Manual Integrations
APPROVED
 mohammad
 7/10/2015 8:01:56 AM



#86
 Perylene-d12
 Concen: 20.00 ng
 RT: 16.51 min Scan# 1262
 Delta R.T. -0.23 min
 Lab File: BF080403.D
 Acq: 9 Jul 2015 16:18



Tgt Ion: 264 Resp: 161237

Ion	Ratio	Lower	Upper
264	100		
260	23.5	19.2	28.8
265	21.3	17.6	26.4

