

Data Path : Z:\SVOASRV\HPCHEM1\BNA F\DATA\BF071618\  
 Data File : BF107411.D  
 Acq On : 16 Jul 2018 19:18  
 Operator : JU/SJ  
 Sample : J3975-14  
 Misc :  
 ALS Vial : 3 Sample Multiplier: 1

Instrument :  
 BNA\_F  
 ClientSampleId :  
 SV30518L

Quant Time: Jul 17 08:33:52 2018  
 Quant Method : Z:\SVOASRV\HPCHEM1\BNA F\METHODS\8270-BF071618.M  
 Quant Title : ASP BNA STANDARDS FOR 5 POINT CALIBRATION  
 QLast Update : Mon Jul 16 17:24:26 2018  
 Response via : Initial Calibration

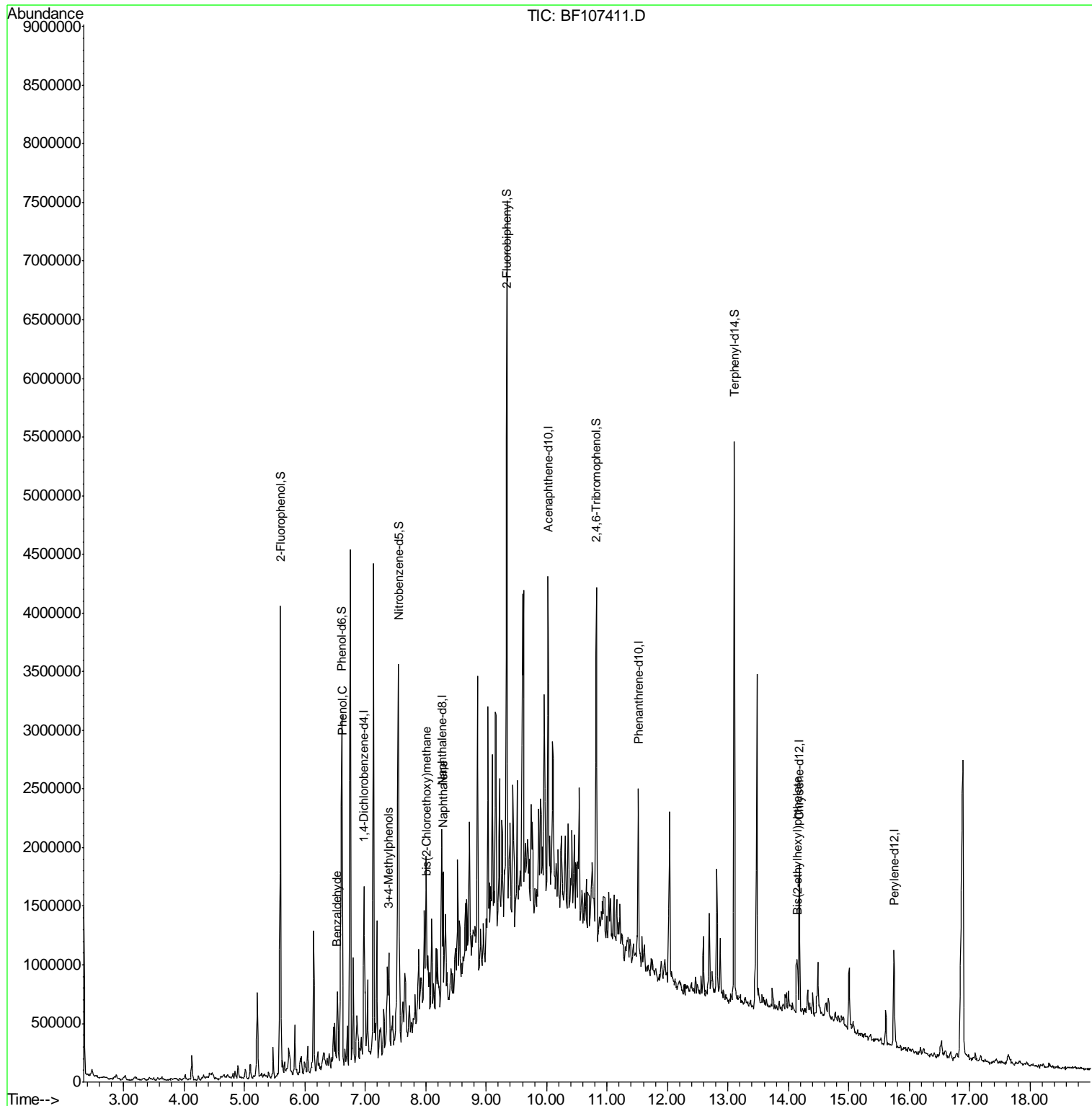
Internal Standards	R.T.	QIon	Response	Conc	Units	Dev(Min)
1) 1,4-Dichlorobenzene-d4	6.98	152	130826	20.00	ng	0.00
21) Naphthalene-d8	8.27	136	530874	20.00	ng	0.00
38) Acenaphthene-d10	10.02	164	252222	20.00	ng	0.00
63) Phenanthrene-d10	11.52	188	504290	20.00	ng	0.00
75) Chrysene-d12	14.18	240	401910	20.00	ng	0.02
86) Perylene-d12	15.75	264	384322	20.00	ng	0.06
System Monitoring Compounds						
5) 2-Fluorophenol	5.60	112	1008105	117.03	ng	0.00
7) Phenol-d6	6.61	99	1199757	107.73	ng	0.02
23) Nitrobenzene-d5	7.54	82	1024406	102.90	ng	0.00
41) 2,4,6-Tribromophenol	10.82	330	299218	135.02	ng	0.01
44) 2-Fluorobiphenyl	9.34	172	1489549	100.44	ng	0.00
78) Terphenyl-d14	13.11	244	1607406	99.37	ng	0.00
Target Compounds						
9) Benzaldehyde	6.53	77	32486	3.626	ng	# 61
10) Phenol	6.62	94	448679	37.578	ng	# 70
20) 3+4-Methylphenols	7.39	107	113319	10.770	ng	# 82
28) bis(2-Chloroethoxy)methane	8.02	93	32751	2.650	ng	91
31) Naphthalene	8.28	128	53783	2.086	ng	# 69
83) Bis(2-ethylhexyl)phthalate	14.15	149	91456	6.411	ng	# 80

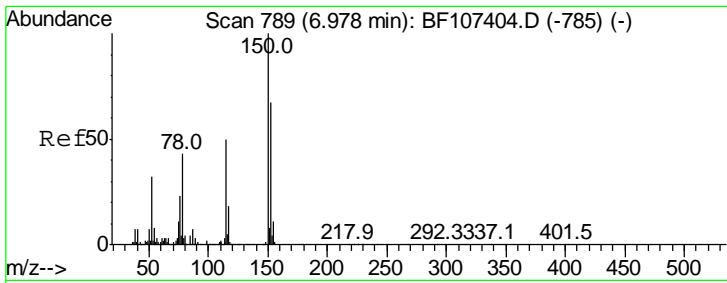
(#) = qualifier out of range (m) = manual integration (+) = signals summed

Data Path : Z:\SVOASRV\HPCHEM1\BNA F\DATA\BF071618\  
 Data File : BF107411.D  
 Acq On : 16 Jul 2018 19:18  
 Operator : JU/SJ  
 Sample : J3975-14  
 Misc :  
 ALS Vial : 3 Sample Multiplier: 1

Instrument :  
 BNA\_F  
 ClientSampled :  
 SV30518L

Quant Time: Jul 17 08:33:52 2018  
 Quant Method : Z:\SVOASRV\HPCHEM1\BNA F\METHODS\8270-BF071618.M  
 Quant Title : ASP BNA STANDARDS FOR 5 POINT CALIBRATION  
 QLast Update : Mon Jul 16 17:24:26 2018  
 Response via : Initial Calibration

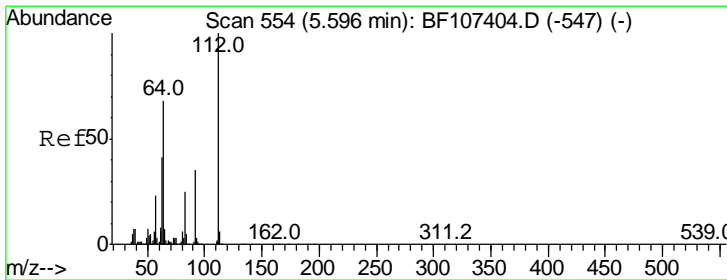
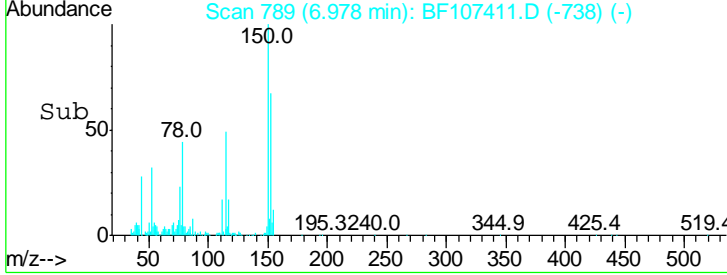
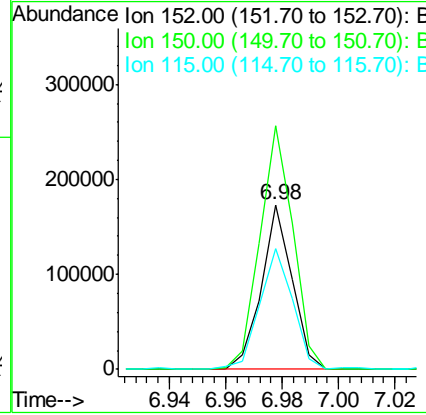
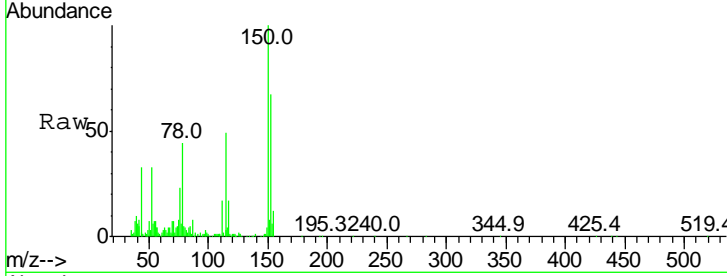




#1  
 1,4-Dichlorobenzene-d4  
 Concen: 20.000 ng  
 RT: 6.98 min Scan# 789  
 Delta R.T. -0.00 min  
 Lab File: BF107411.D  
 Acq: 16 Jul 2018 19:18

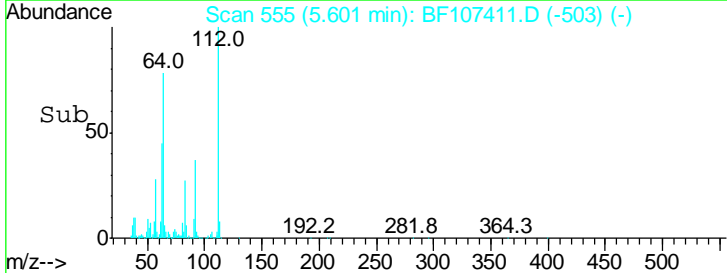
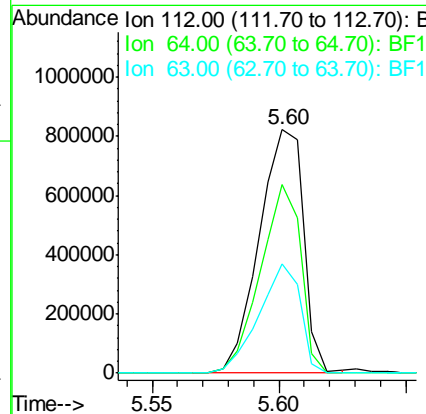
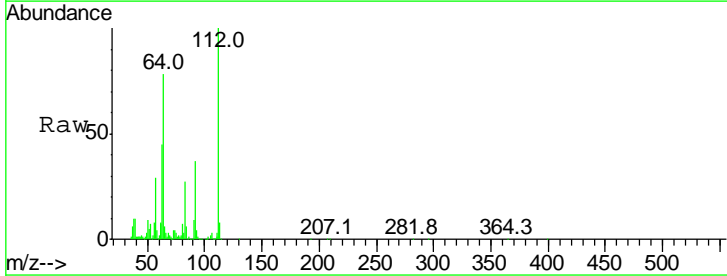
Instrument :  
 BNA\_F  
 ClientSampleID :  
 SV30518L

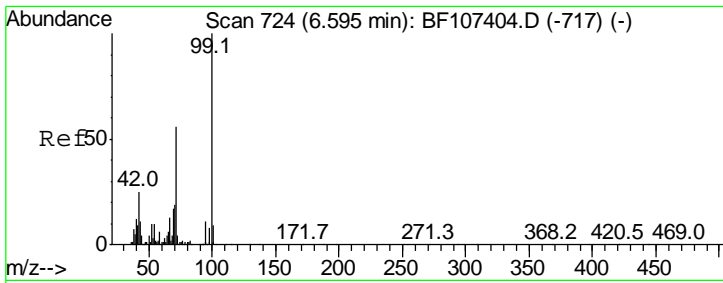
Tgt Ion	Resp	Lower	Upper
152	130826		
152	100		
150	148.2	124.6	186.8
115	73.3	50.1	75.1



#5  
 2-Fluorophenol  
 Concen: 117.030 ng  
 RT: 5.60 min Scan# 555  
 Delta R.T. 0.01 min  
 Lab File: BF107411.D  
 Acq: 16 Jul 2018 19:18

Tgt Ion	Resp	Lower	Upper
112	1008105		
112	100		
64	77.5	47.9	71.9#
63	45.1	23.7	35.5#

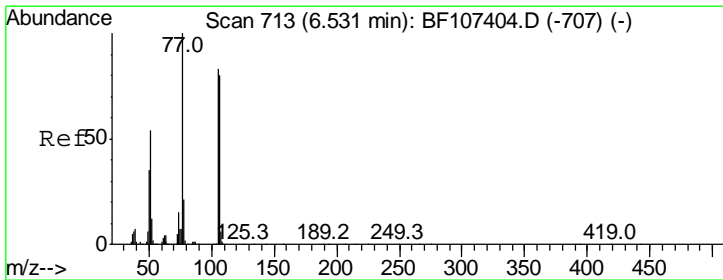
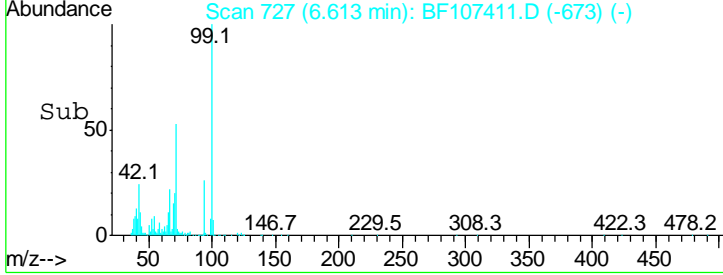
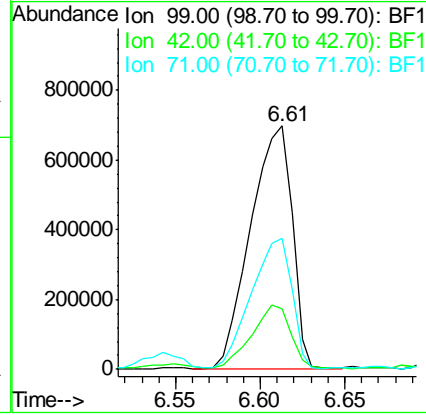
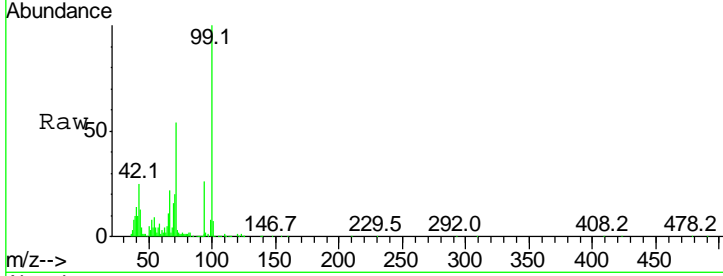




#7  
 Phenol-d6  
 Concen: 107.727 ng  
 RT: 6.61 min Scan# 727  
 Delta R.T. 0.02 min  
 Lab File: BF107411.D  
 Acq: 16 Jul 2018 19:18

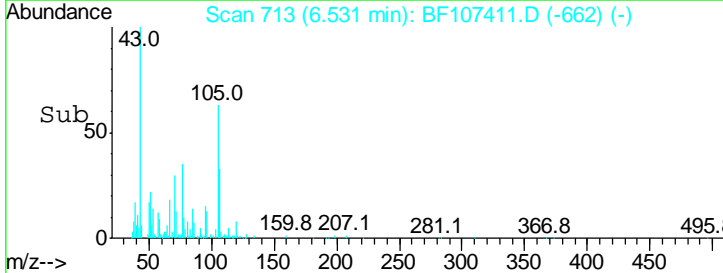
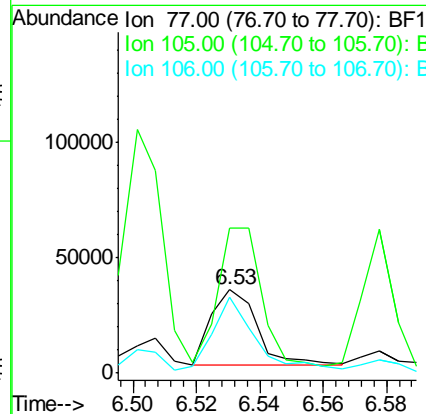
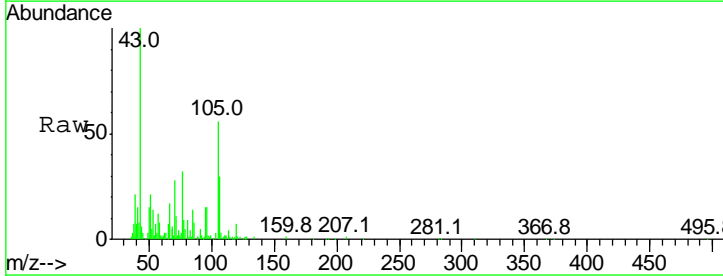
Instrument :  
 BNA\_F  
 ClientSampled :  
 SV30518L

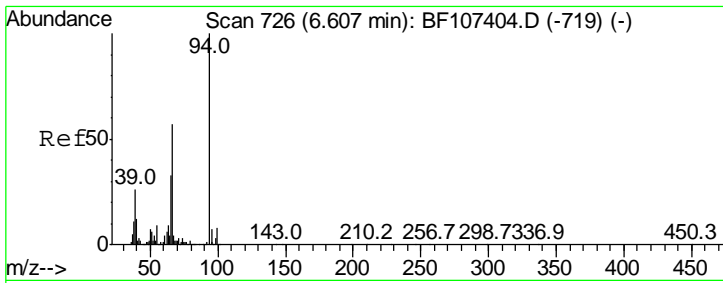
Tgt Ion	Resp	Lower	Upper
99	1199757		
42	25.0	14.5	21.7#
71	53.6	25.4	38.0#



#9  
 Benzaldehyde  
 Concen: 3.626 ng  
 RT: 6.53 min Scan# 713  
 Delta R.T. -0.00 min  
 Lab File: BF107411.D  
 Acq: 16 Jul 2018 19:18

Tgt Ion	Resp	Lower	Upper
77	32486		
105	173.8	81.1	121.1#
106	91.1	74.5	114.5

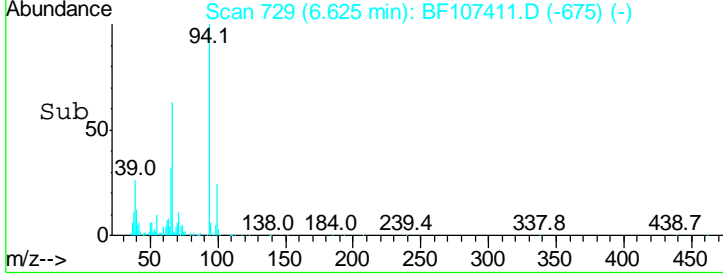
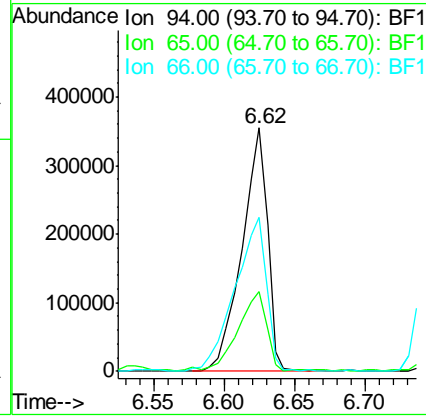
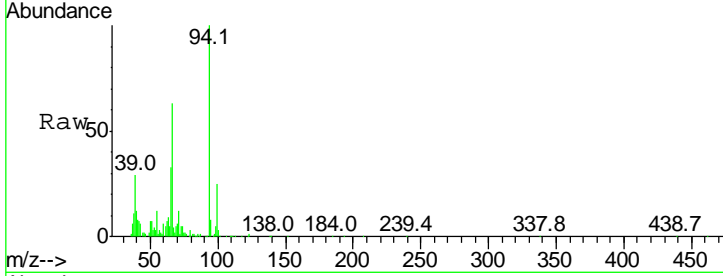




#10  
 Phenol  
 Concen: 37.578 ng  
 RT: 6.62 min Scan# 729  
 Delta R.T. 0.02 min  
 Lab File: BF107411.D  
 Acq: 16 Jul 2018 19:18

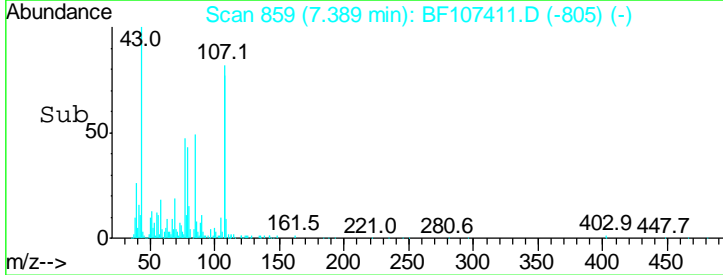
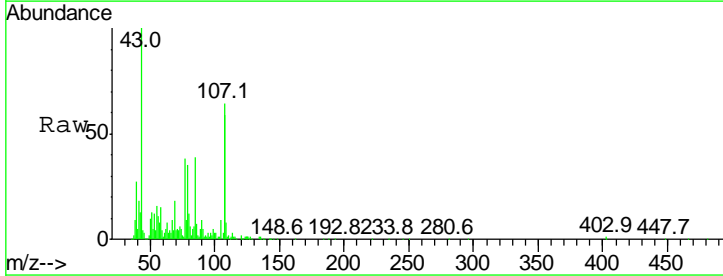
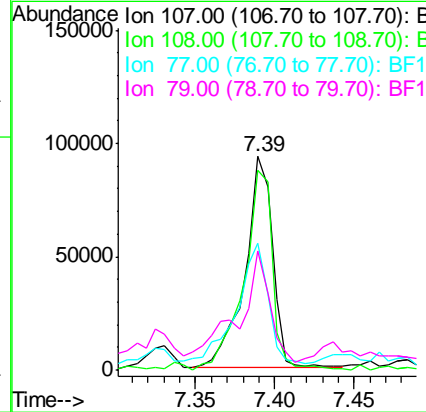
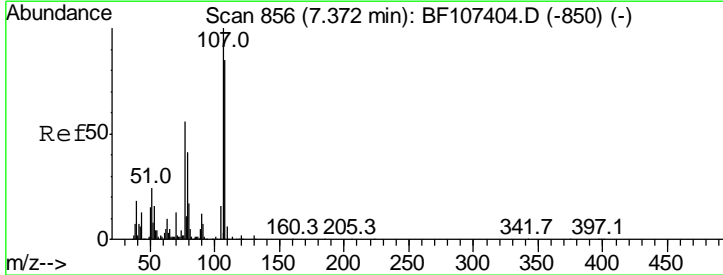
Instrument :  
 BNA\_F  
 ClientSampled :  
 SV30518L

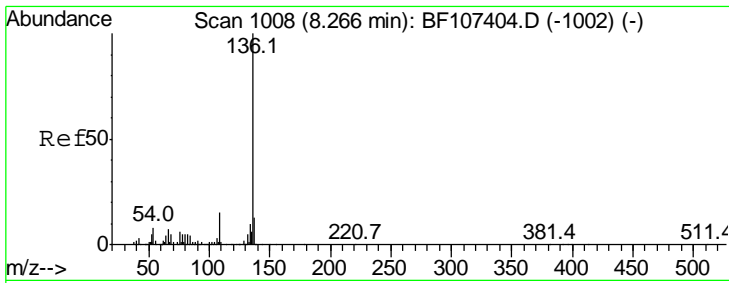
Tgt Ion	Resp	Lower	Upper
94	100		
65	33.0	7.9	47.9
66	63.1	16.2	56.2#



#20  
 3+4-Methylphenols  
 Concen: 10.770 ng  
 RT: 7.39 min Scan# 859  
 Delta R.T. 0.02 min  
 Lab File: BF107411.D  
 Acq: 16 Jul 2018 19:18

Tgt Ion	Resp	Lower	Upper
107	100		
108	93.5	68.2	108.2
77	59.3	26.7	66.7
79	55.5	6.3	46.3#

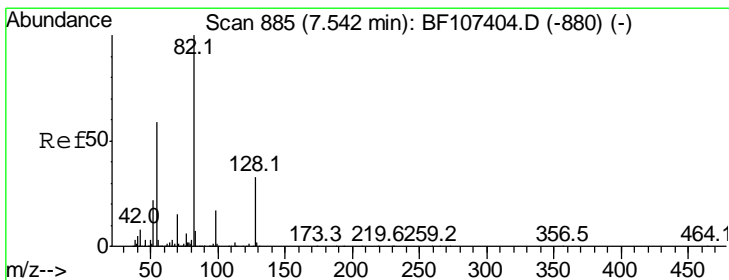
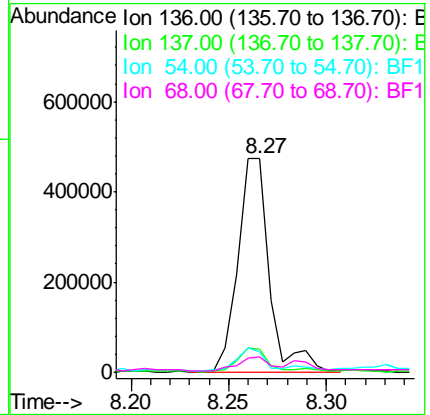
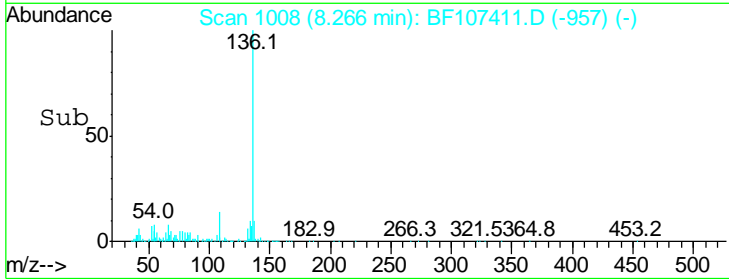
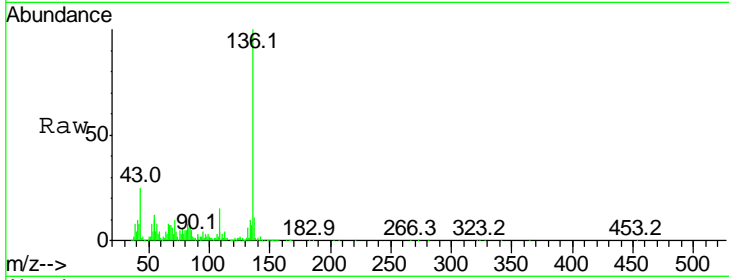




#21  
 Naphthalene-d8  
 Concen: 20.000 ng  
 RT: 8.27 min Scan# 1008  
 Delta R.T. -0.00 min  
 Lab File: BF107411.D  
 Acq: 16 Jul 2018 19:18

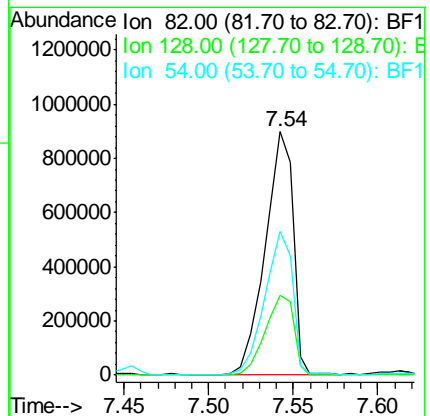
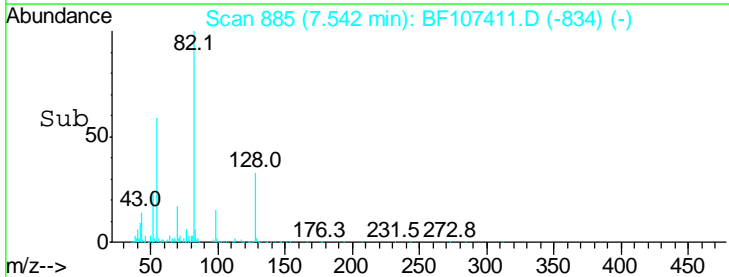
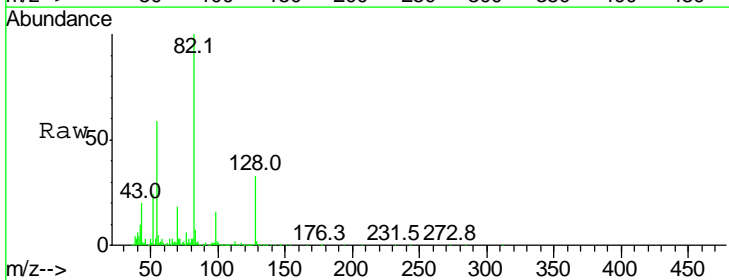
Instrument :  
 BNA\_F  
 ClientSampleID :  
 SV30518L

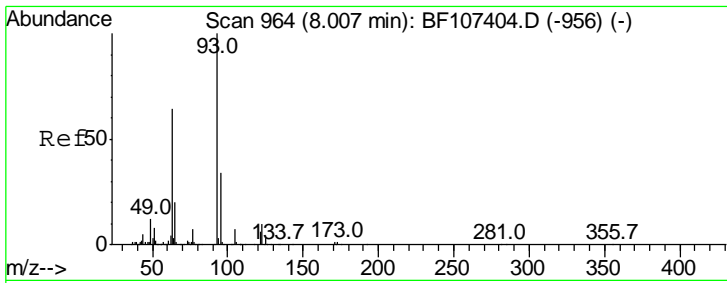
Tgt Ion	Resp	Lower	Upper
136	100		
137	10.8	8.9	13.3
54	9.6	6.6	9.8
68	7.5	5.0	7.4#



#23  
 Nitrobenzene-d5  
 Concen: 102.897 ng  
 RT: 7.54 min Scan# 885  
 Delta R.T. -0.00 min  
 Lab File: BF107411.D  
 Acq: 16 Jul 2018 19:18

Tgt Ion	Resp	Lower	Upper
82	100		
128	32.6	36.1	54.1#
54	59.2	41.4	62.2

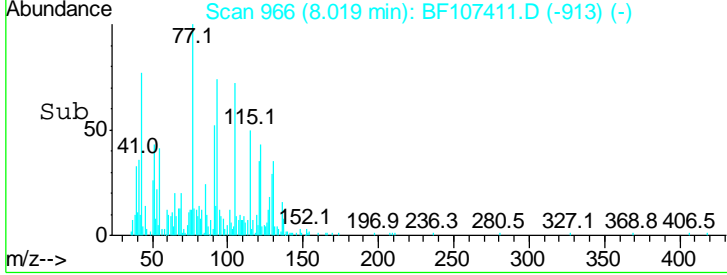
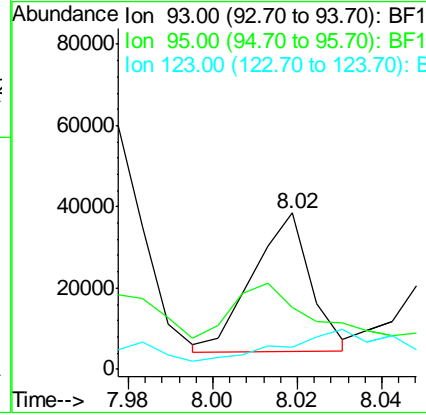
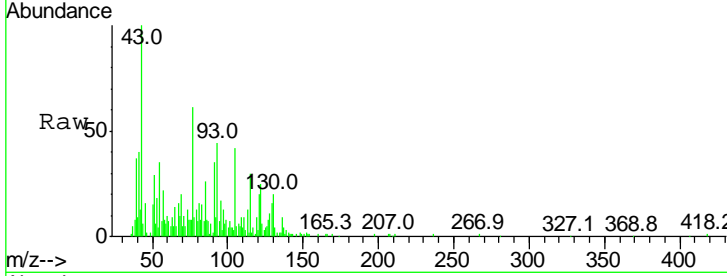




#28  
 bis(2-Chloroethoxy)methane  
 Concen: 2.650 ng  
 RT: 8.02 min Scan# 966  
 Delta R.T. 0.01 min  
 Lab File: BF107411.D  
 Acq: 16 Jul 2018 19:18

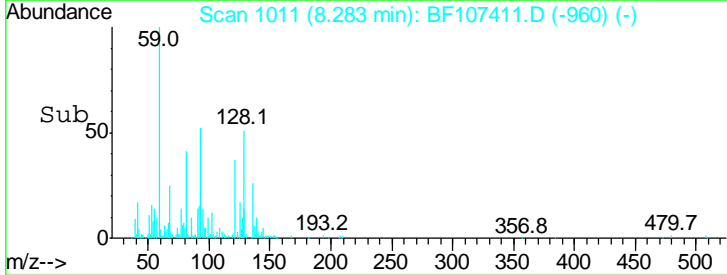
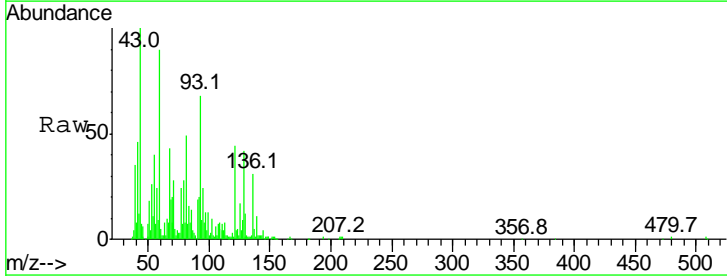
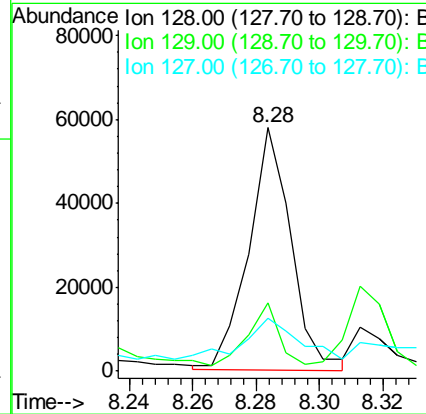
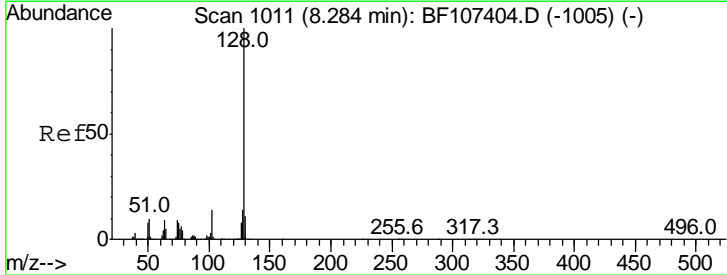
**Instrument :**  
 BNA\_F  
**ClientSampled :**  
 SV30518L

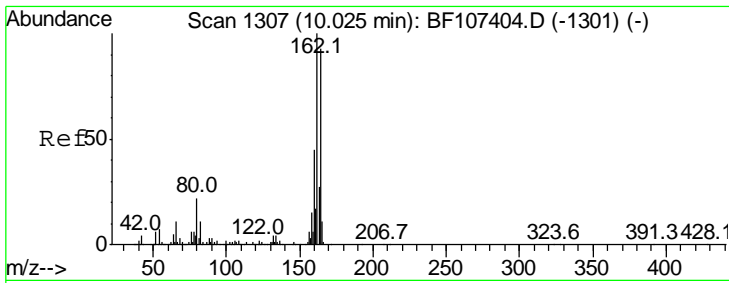
Tgt Ion	Resp	Lower	Upper
93	32751		
95	39.2	26.3	39.5
123	13.8	9.8	14.6



#31  
 Naphthalene  
 Concen: 2.086 ng  
 RT: 8.28 min Scan# 1011  
 Delta R.T. -0.00 min  
 Lab File: BF107411.D  
 Acq: 16 Jul 2018 19:18

Tgt Ion	Resp	Lower	Upper
128	53783		
129	28.2	8.8	13.2#
127	21.7	10.9	16.3#

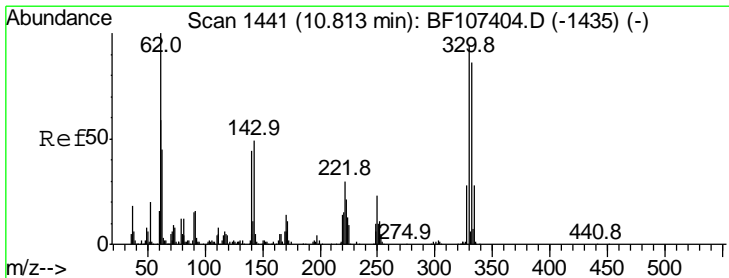
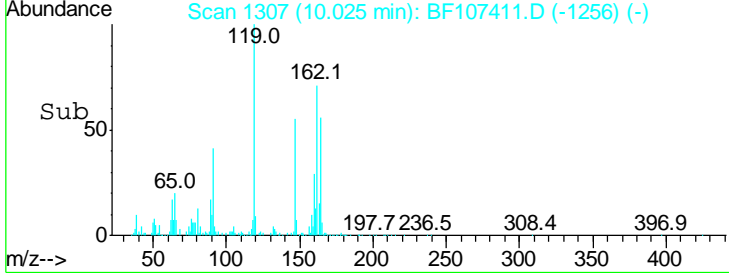
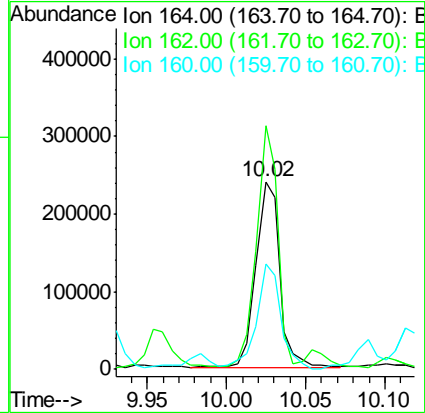
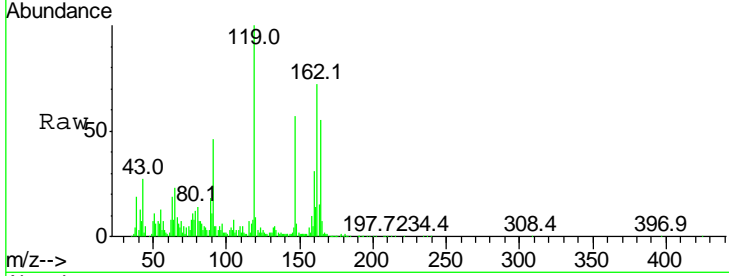




#38  
 Acenaphthene-d10  
 Concen: 20.000 ng  
 RT: 10.02 min Scan# 1307  
 Delta R.T. -0.00 min  
 Lab File: BF107411.D  
 Acq: 16 Jul 2018 19:18

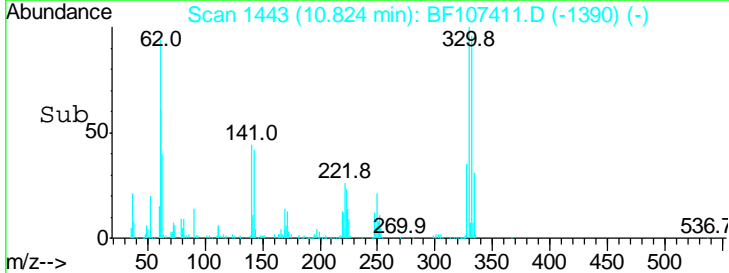
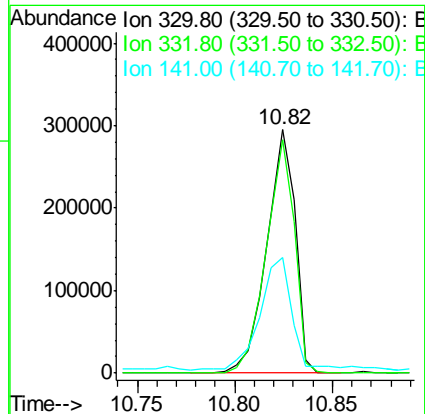
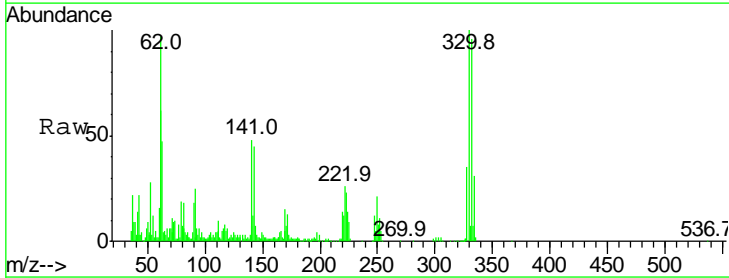
Instrument :  
 BNA\_F  
 ClientSampled :  
 SV30518L

Tgt Ion	Resp	Lower	Upper
164	100		
162	129.8	86.1	129.1#
160	55.9	38.3	57.5

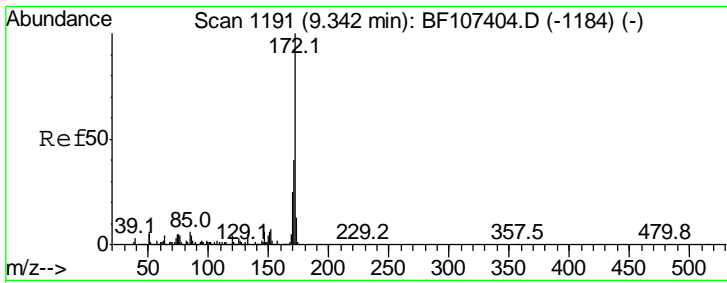


#41  
 2,4,6-Tribromophenol  
 Concen: 135.022 ng  
 RT: 10.82 min Scan# 1443  
 Delta R.T. 0.01 min  
 Lab File: BF107411.D  
 Acq: 16 Jul 2018 19:18

Tgt Ion	Resp	Lower	Upper
330	100		
332	95.1	77.0	115.6
141	53.0	29.9	44.9#



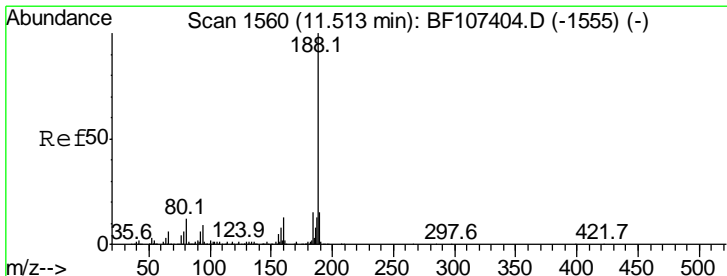
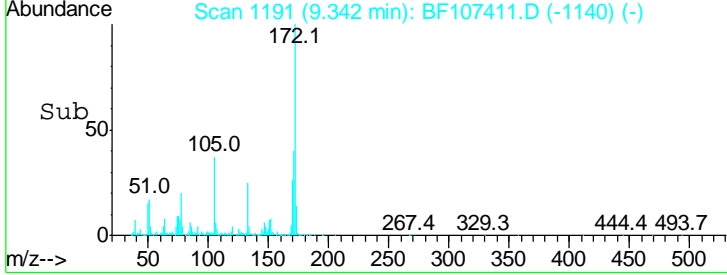
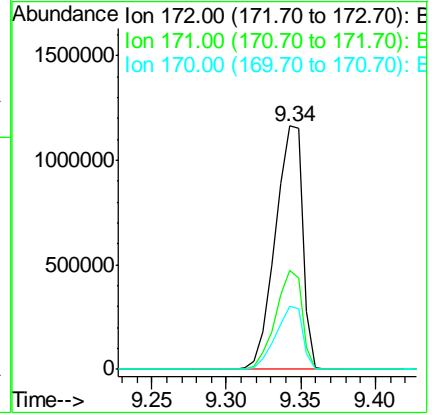
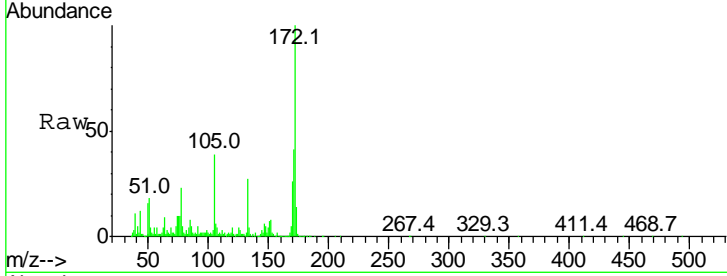




#44  
 2-Fluorobiphenyl  
 Concen: 100.437 ng  
 RT: 9.34 min Scan# 1191  
 Delta R.T. 0.00 min  
 Lab File: BF107411.D  
 Acq: 16 Jul 2018 19:18

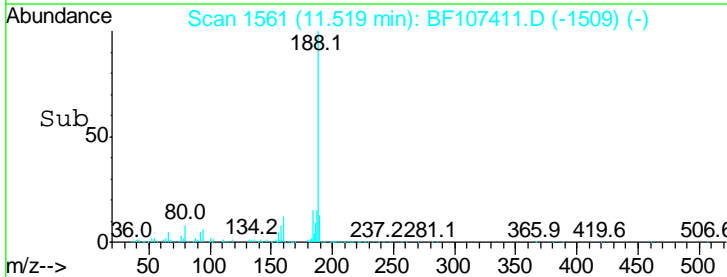
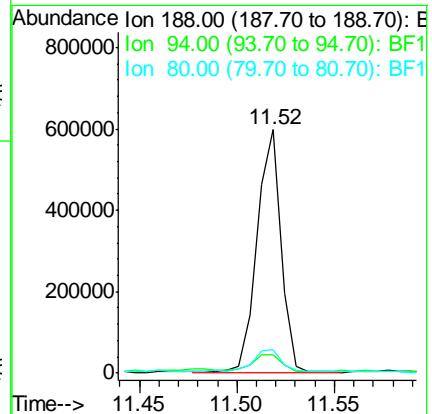
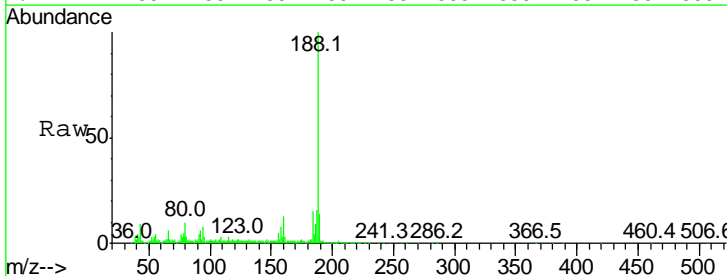
Instrument :  
 BNA\_F  
 ClientSampleID :  
 SV30518L

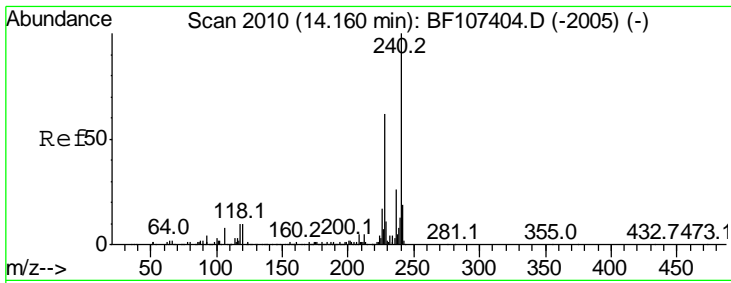
Tgt Ion	Resp	Lower	Upper
172	1489549		
171	40.6	29.7	44.5
170	25.8	19.6	29.4



#63  
 Phenanthrene-d10  
 Concen: 20.000 ng  
 RT: 11.52 min Scan# 1561  
 Delta R.T. 0.01 min  
 Lab File: BF107411.D  
 Acq: 16 Jul 2018 19:18

Tgt Ion	Resp	Lower	Upper
188	504290		
94	7.7	8.5	12.7#
80	9.7	9.2	13.8

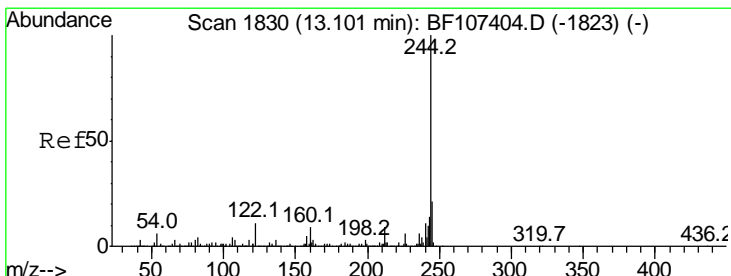
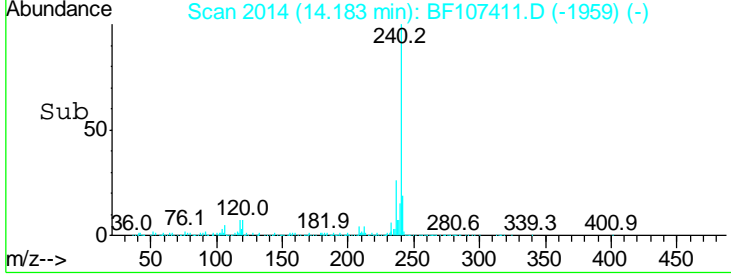
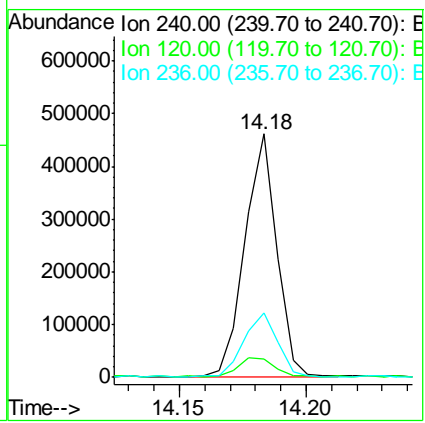
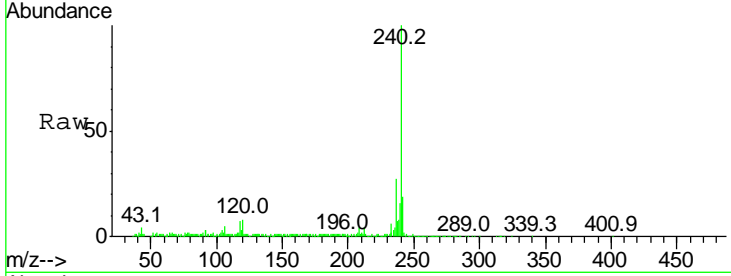




#75  
 Chrysene-d12  
 Concen: 20.000 ng  
 RT: 14.18 min Scan# 2014  
 Delta R.T. 0.02 min  
 Lab File: BF107411.D  
 Acq: 16 Jul 2018 19:18

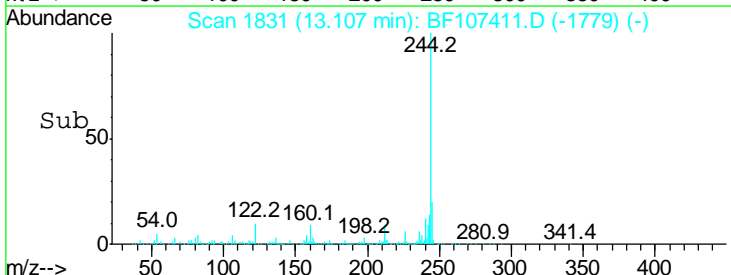
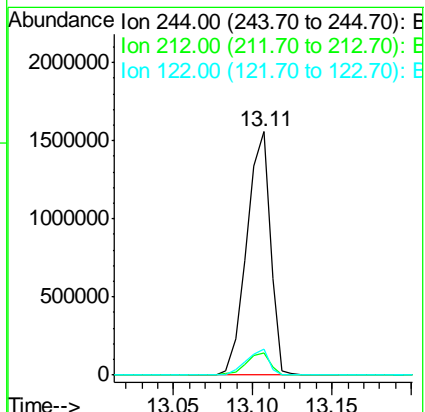
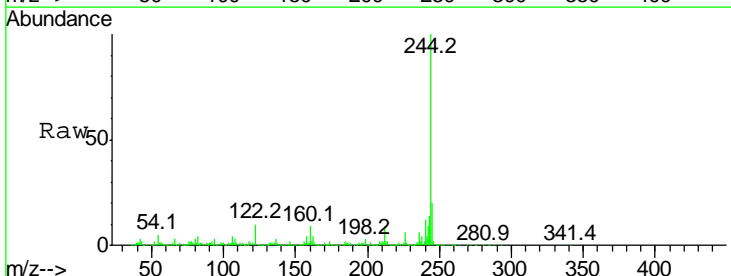
**Instrument :**  
 BNA\_F  
**ClientSampled :**  
 SV30518L

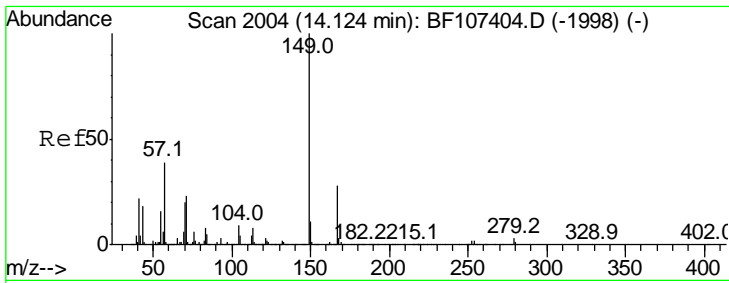
Tgt Ion	Resp	Lower	Upper
240	100		
120	7.7	9.5	14.3#
236	26.7	20.7	31.1



#78  
 Terphenyl-d14  
 Concen: 99.369 ng  
 RT: 13.11 min Scan# 1831  
 Delta R.T. 0.01 min  
 Lab File: BF107411.D  
 Acq: 16 Jul 2018 19:18

Tgt Ion	Resp	Lower	Upper
244	100		
212	9.2	5.4	8.0#
122	10.5	11.0	16.4#

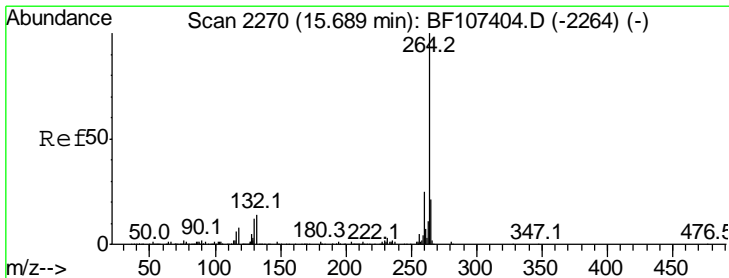
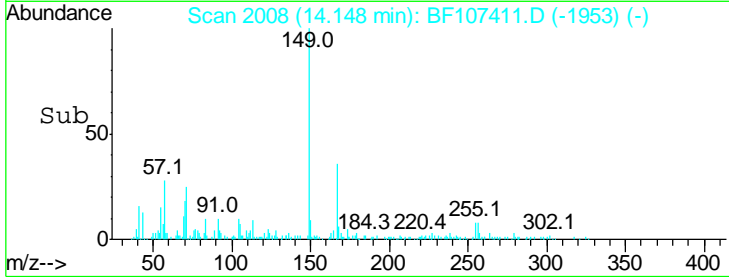
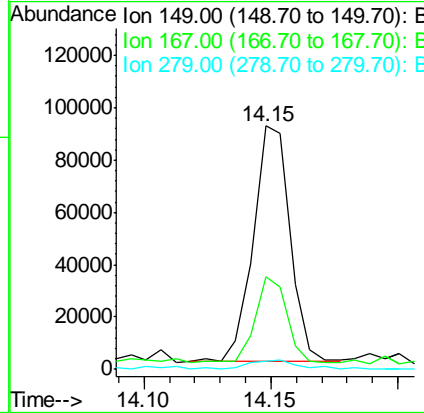
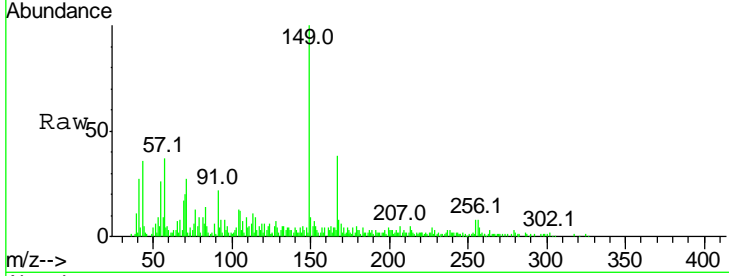




#83  
 Bis(2-ethylhexyl)phthalate  
 Concen: 6.411 ng  
 RT: 14.15 min Scan# 2008  
 Delta R.T. 0.02 min  
 Lab File: BF107411.D  
 Acq: 16 Jul 2018 19:18

Instrument :  
 BNA\_F  
 ClientSampled :  
 SV30518L

Tgt Ion	Resp	Lower	Upper
149	100		
167	38.1	21.3	31.9
279	3.3	3.0	4.4



#86  
 Perylene-d12  
 Concen: 20.000 ng  
 RT: 15.75 min Scan# 2280  
 Delta R.T. 0.06 min  
 Lab File: BF107411.D  
 Acq: 16 Jul 2018 19:18

Tgt Ion	Resp	Lower	Upper
264	100		
260	26.8	19.2	28.8
265	25.1	17.5	26.3

