

Data Path : Z:\svoasrv\HPCHEM1\BNA\_F\Data\BF072523\  
 Data File : BF134475.D  
 Acq On : 25 Jul 2023 21:55  
 Operator : CG\JU  
 Sample : 03668-01  
 Misc :  
 ALS Vial : 18 Sample Multiplier: 1

Instrument :  
 BNA\_F  
 ClientSampleId :  
 SLUDGE-DRUM

Quant Time: Jul 26 02:07:38 2023  
 Quant Method : Z:\svoasrv\HPCHEM1\BNA\_F\Methods\8270-BF072423.M  
 Quant Title : ASP BNA STANDARDS FOR 5 POINT CALIBRATION  
 QLast Update : Tue Jul 25 01:46:04 2023  
 Response via : Initial Calibration

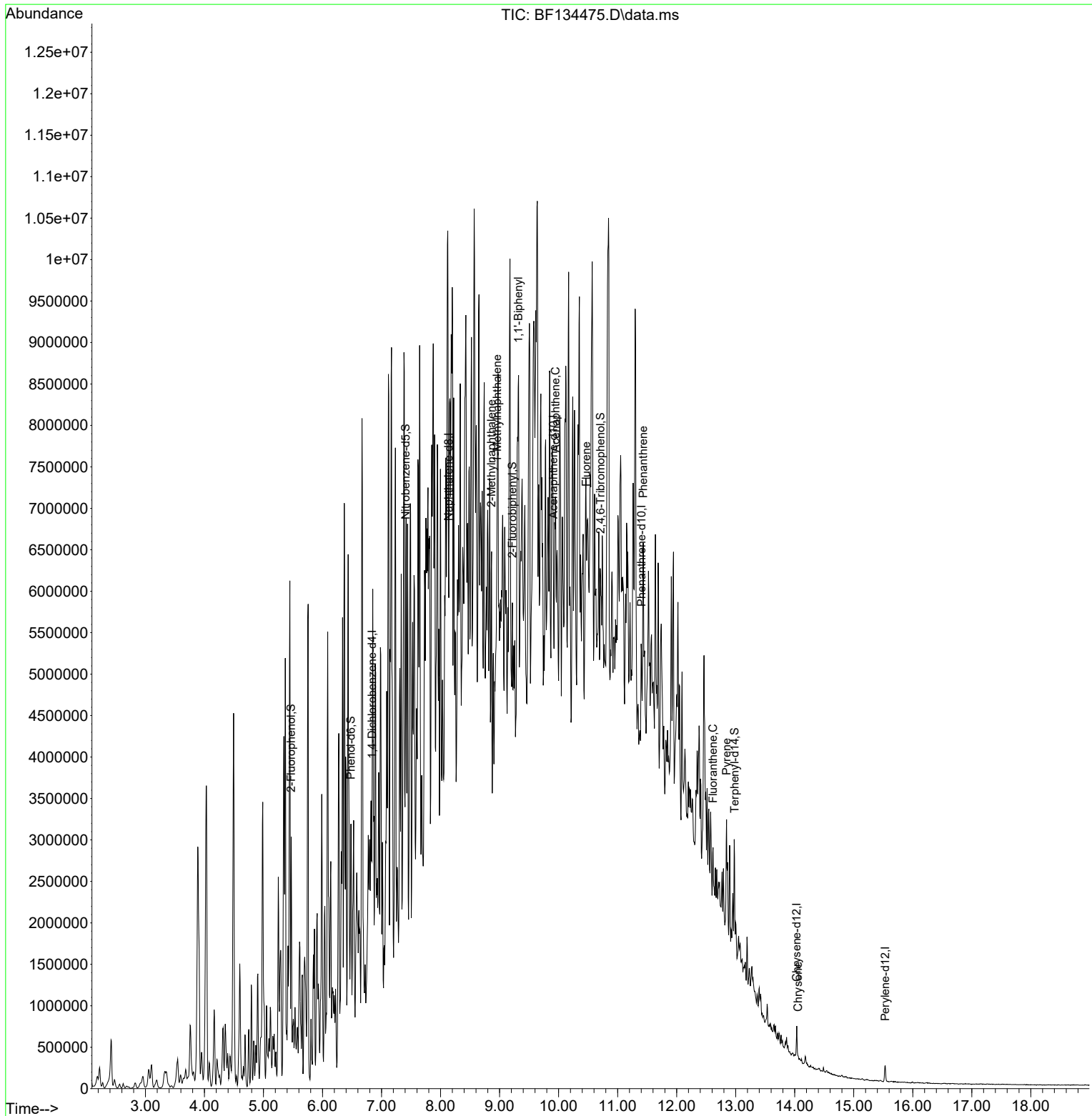
Compound	R.T.	QIon	Response	Conc	Units	Dev(Min)	
-----							
Internal Standards							
1) 1,4-Dichlorobenzene-d4	6.840	152	109656	20.000	ng	0.00	
21) Naphthalene-d8	8.134	136	259383	20.000	ng	# 0.02	
39) Acenaphthene-d10	9.910	164	87746	20.000	ng	# 0.04	
64) Phenanthrene-d10	11.404	188	139669	20.000	ng	# 0.04	
76) Chrysene-d12	14.033	240	122819	20.000	ng	0.00	
86) Perylene-d12	15.533	264	97949	20.000	ng	0.00	
System Monitoring Compounds							
5) 2-Fluorophenol	5.469	112	691757	104.227	ng	0.00	
7) Phenol-d6	6.481	99	798816	98.236	ng	0.00	
23) Nitrobenzene-d5	7.410	82	407572	79.500	ng	0.00	
42) 2,4,6-Tribromophenol	10.710	330	102212	81.985	ng	0.04	
45) 2-Fluorobiphenyl	9.216	172	341579	51.105	ng	0.02	
79) Terphenyl-d14	12.980	244	355602	50.543	ng	0.02	
Target Compounds							
							Qvalue
37) 2-Methylnaphthalene	8.863	142	895932	99.887	ng		98
38) 1-Methylnaphthalene	8.957	142	789949	94.934	ng		95
46) 1,1'-Biphenyl	9.316	154	80909	11.188	ng		96
52) Acenaphthene	9.945	154	134757	25.326	ng	#	72
58) Fluorene	10.469	166	344860	52.200	ng	#	88
71) Phenanthrene	11.433	178	1000374	137.085	ng	#	96
75) Fluoranthene	12.616	202	54287	6.383	ng		63
78) Pyrene	12.845	202	268012	27.444	ng	#	94
83) Chrysene	14.057	228	16530	2.017	ng	#	52
-----							

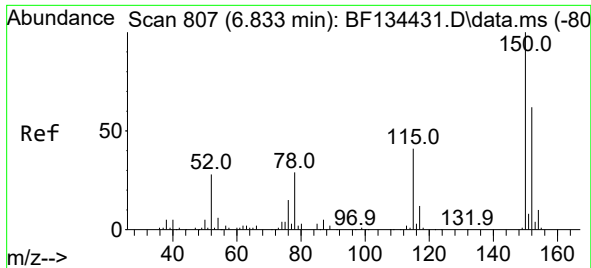
(#) = qualifier out of range (m) = manual integration (+) = signals summed

Data Path : Z:\svoasrv\HPCHEM1\BNA\_F\Data\BF072523\  
 Data File : BF134475.D  
 Acq On : 25 Jul 2023 21:55  
 Operator : CG\JU  
 Sample : 03668-01  
 Misc :  
 ALS Vial : 18 Sample Multiplier: 1

Instrument :  
 BNA\_F  
 ClientSampleId :  
 SLUDGE-DRUM

Quant Time: Jul 26 02:07:38 2023  
 Quant Method : Z:\svoasrv\HPCHEM1\BNA\_F\Methods\8270-BF072423.M  
 Quant Title : ASP BNA STANDARDS FOR 5 POINT CALIBRATION  
 QLast Update : Tue Jul 25 01:46:04 2023  
 Response via : Initial Calibration

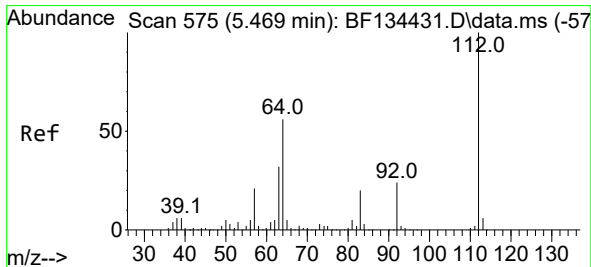
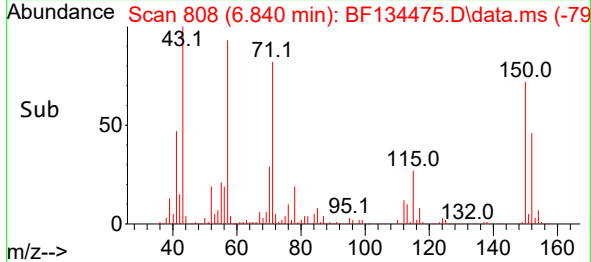
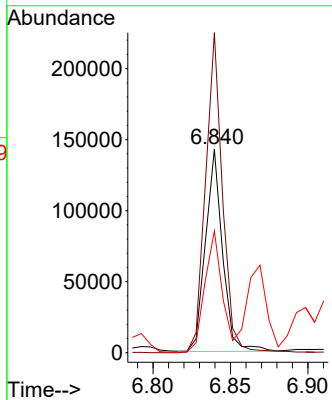
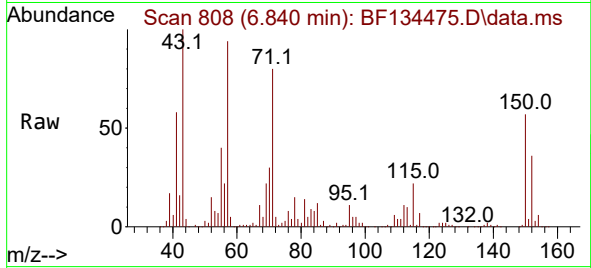




#1  
 1,4-Dichlorobenzene-d4  
 Concen: 20.000 ng  
 RT: 6.840 min Scan# 807  
 Delta R.T. 0.007 min  
 Lab File: BF134475.D  
 Acq: 25 Jul 2023 21:55

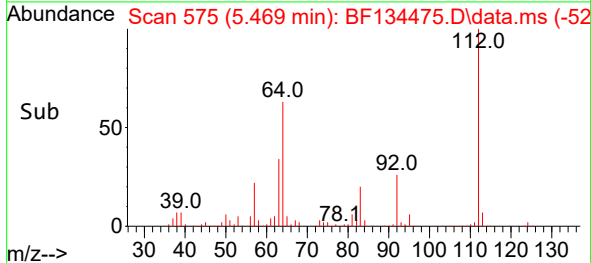
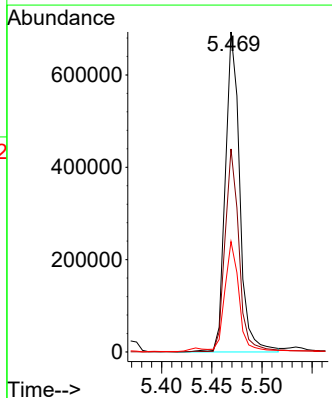
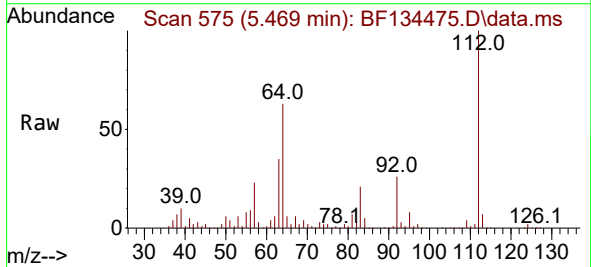
Instrument : BNA\_F  
 ClientSampleId : SLUDGE-DRUM

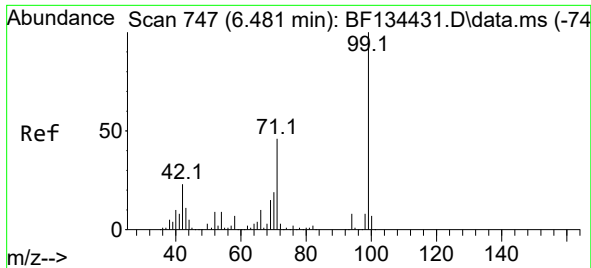
Tgt Ion:152 Resp: 109656  
 Ion Ratio Lower Upper  
 152 100  
 150 157.3 128.3 192.5  
 115 59.8 52.4 78.6



#5  
 2-Fluorophenol  
 Concen: 104.227 ng  
 RT: 5.469 min Scan# 575  
 Delta R.T. 0.000 min  
 Lab File: BF134475.D  
 Acq: 25 Jul 2023 21:55

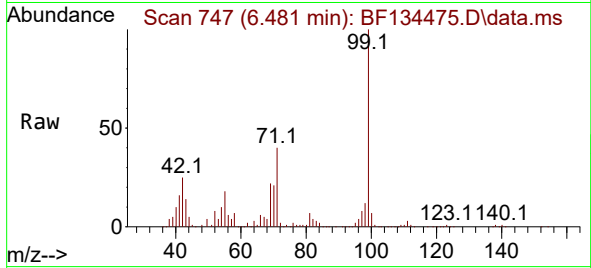
Tgt Ion:112 Resp: 691757  
 Ion Ratio Lower Upper  
 112 100  
 64 63.4 44.9 67.3  
 63 34.5 25.4 38.0





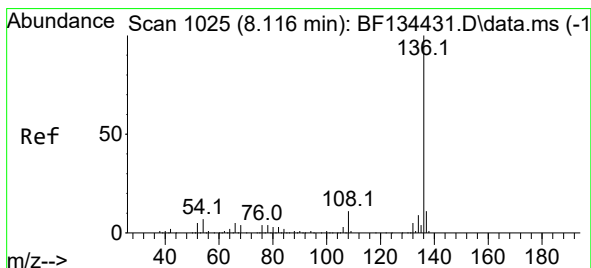
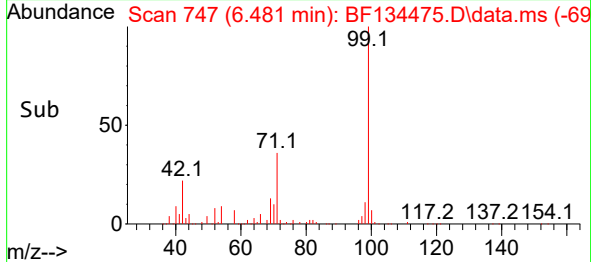
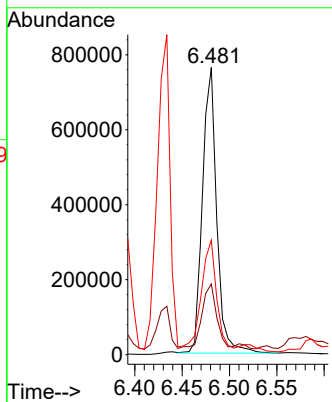
#7  
Phenol-d6  
Concen: 98.236 ng  
RT: 6.481 min Scan# 74  
Delta R.T. 0.000 min  
Lab File: BF134475.D  
Acq: 25 Jul 2023 21:55

Instrument : BNA\_F  
ClientSampleId : SLUDGE-DRUM



Tgt Ion: 99 Resp: 798816

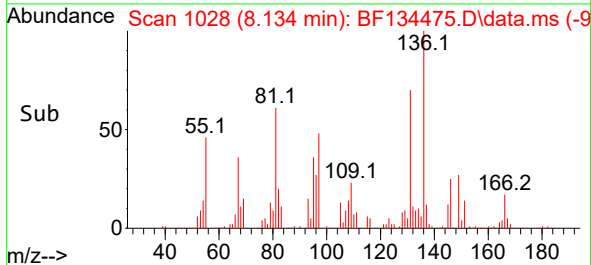
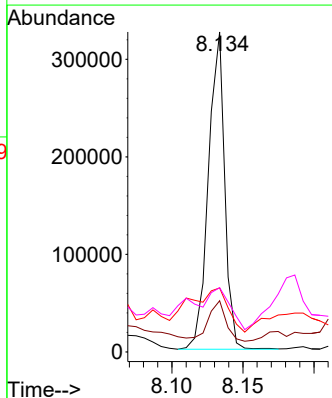
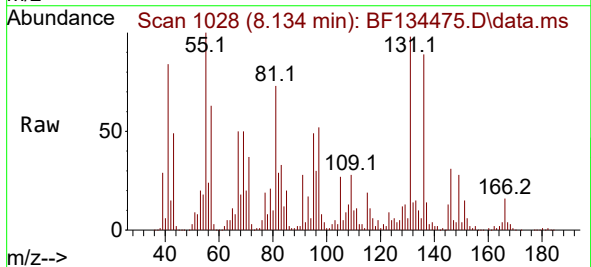
Ion	Ratio	Lower	Upper
99	100		
42	24.6	18.7	28.1
71	39.9	36.4	54.6

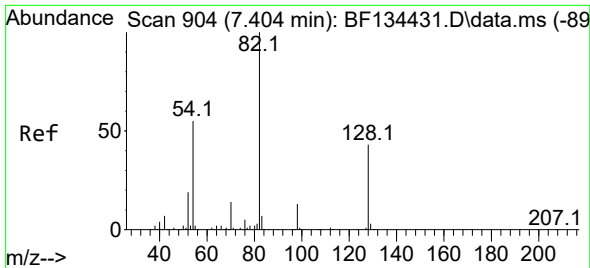


#21  
Naphthalene-d8  
Concen: 20.000 ng  
RT: 8.134 min Scan# 1028  
Delta R.T. 0.018 min  
Lab File: BF134475.D  
Acq: 25 Jul 2023 21:55

Tgt Ion: 136 Resp: 259383

Ion	Ratio	Lower	Upper
136	100		
137	16.0	8.4	12.6#
54	20.0	5.2	7.8#
68	20.1	2.9	4.3#

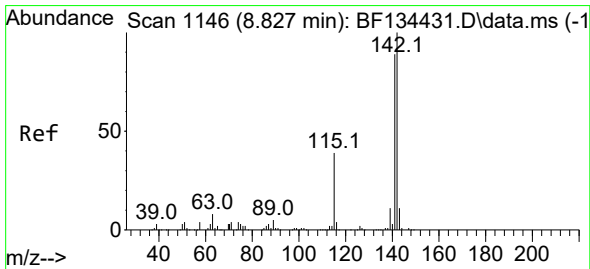
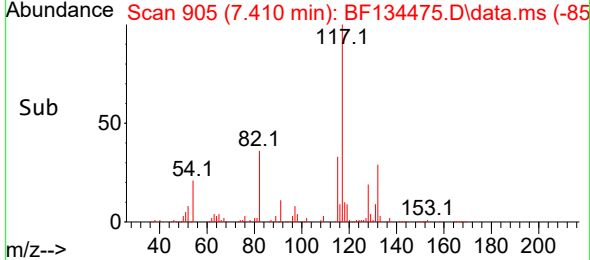
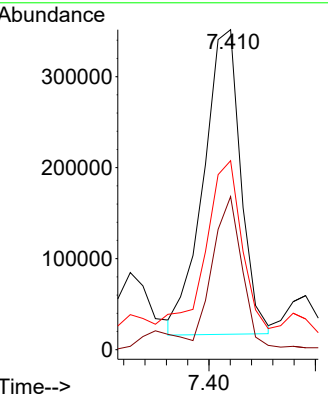
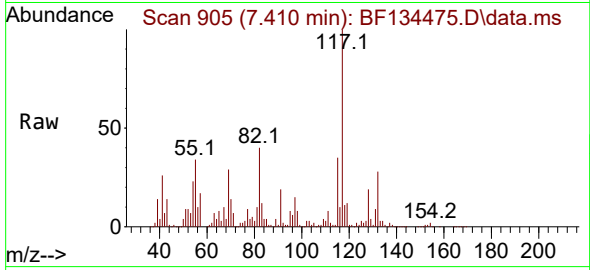




#23  
 Nitrobenzene-d5  
 Concen: 79.500 ng  
 RT: 7.410 min Scan# 905  
 Delta R.T. 0.006 min  
 Lab File: BF134475.D  
 Acq: 25 Jul 2023 21:55

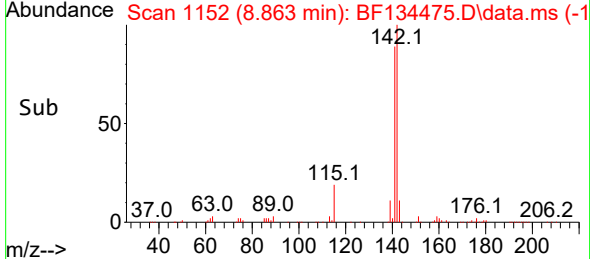
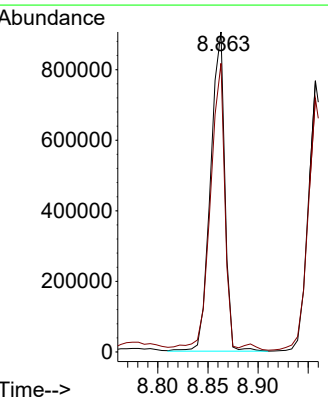
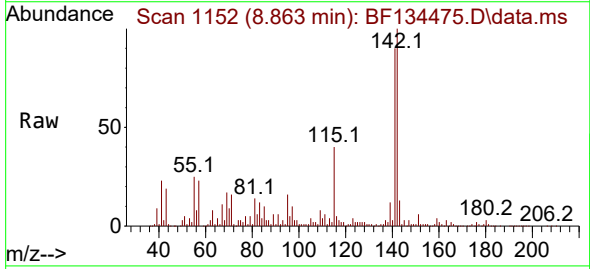
Instrument : BNA\_F  
 Client Sample Id : SLUDGE-DRUM

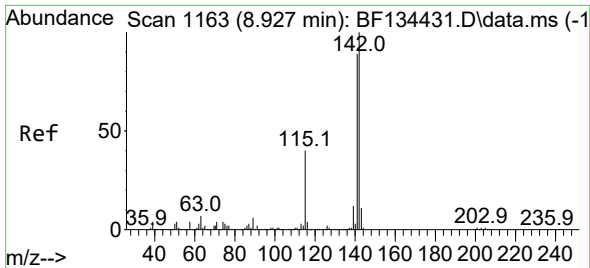
Tgt Ion	Resp	Lower	Upper
82	100		
128	47.9	34.3	51.5
54	59.0	43.8	65.6



#37  
 2-Methylnaphthalene  
 Concen: 99.887 ng  
 RT: 8.863 min Scan# 1152  
 Delta R.T. 0.036 min  
 Lab File: BF134475.D  
 Acq: 25 Jul 2023 21:55

Tgt Ion	Resp	Lower	Upper
142	100		
141	90.2	70.8	106.2

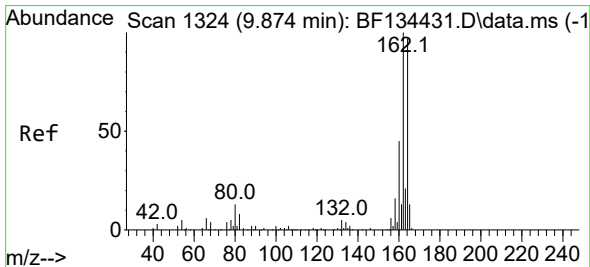
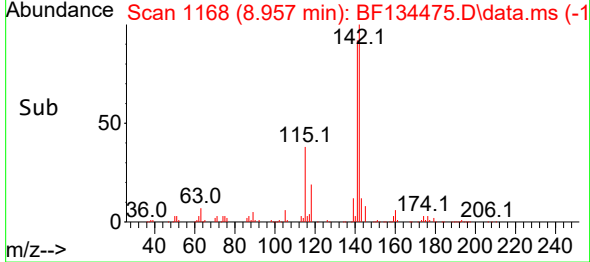
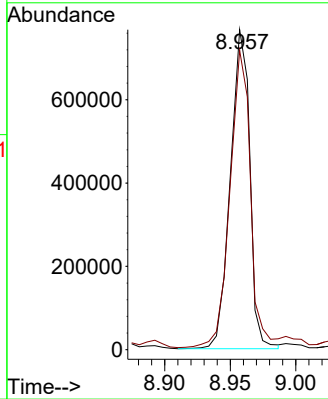
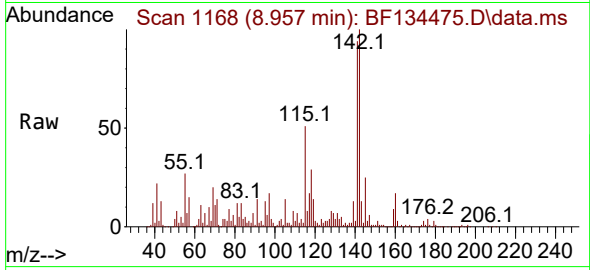




#38  
 1-Methylnaphthalene  
 Concen: 94.934 ng  
 RT: 8.957 min Scan# 1168  
 Delta R.T. 0.030 min  
 Lab File: BF134475.D  
 Acq: 25 Jul 2023 21:55

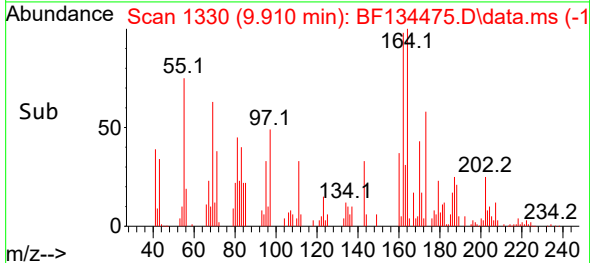
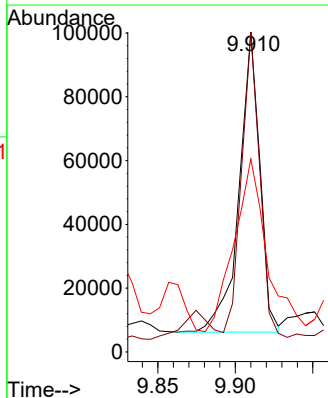
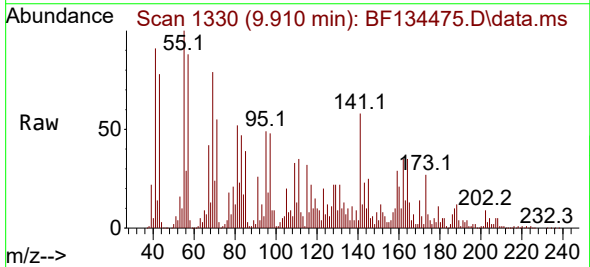
Instrument : BNA\_F  
 ClientSampleId : SLUDGE-DRUM

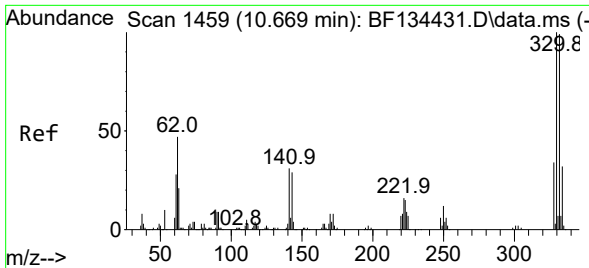
Tgt Ion:142 Resp: 789949  
 Ion Ratio Lower Upper  
 142 100  
 141 93.5 71.4 107.2



#39  
 Acenaphthene-d10  
 Concen: 20.000 ng  
 RT: 9.910 min Scan# 1330  
 Delta R.T. 0.036 min  
 Lab File: BF134475.D  
 Acq: 25 Jul 2023 21:55

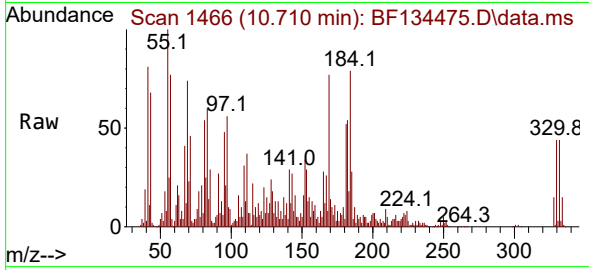
Tgt Ion:164 Resp: 87746  
 Ion Ratio Lower Upper  
 164 100  
 162 100.0 82.6 123.8  
 160 60.3 37.2 55.8#



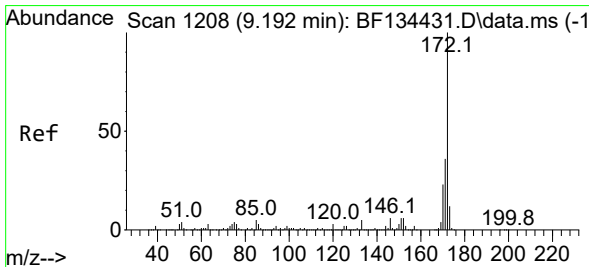
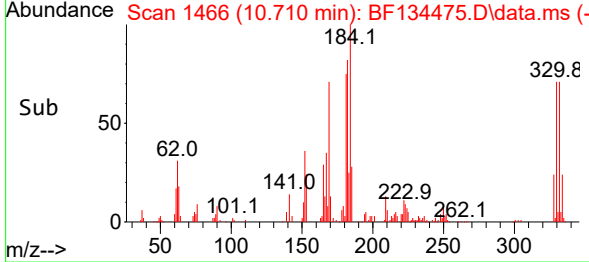
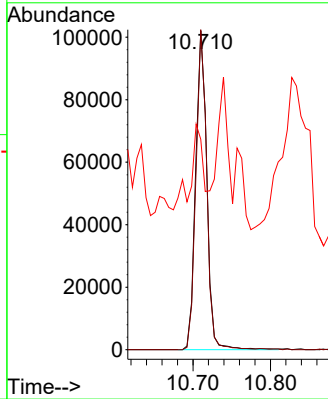


#42  
 2,4,6-Tribromophenol  
 Concen: 81.985 ng  
 RT: 10.710 min Scan# 1459  
 Delta R.T. 0.041 min  
 Lab File: BF134475.D  
 Acq: 25 Jul 2023 21:55

Instrument : BNA\_F  
 ClientSampleId : SLUDGE-DRUM

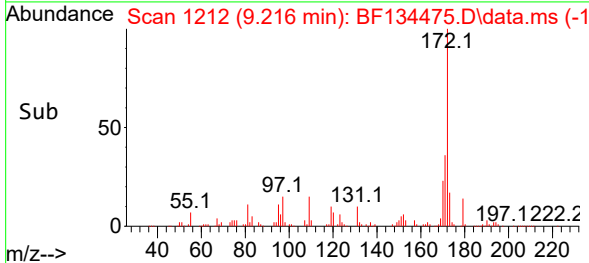
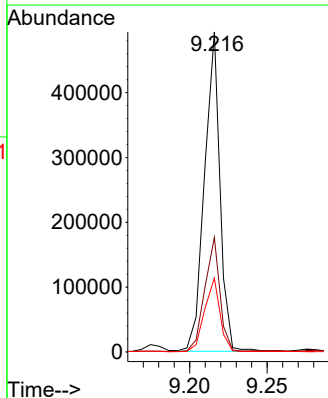
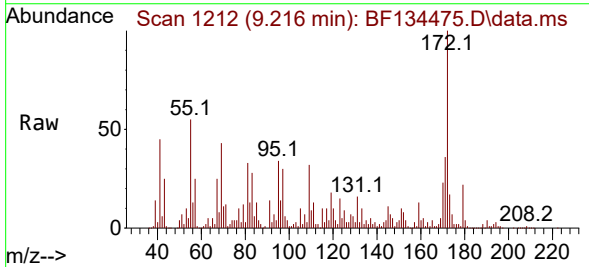


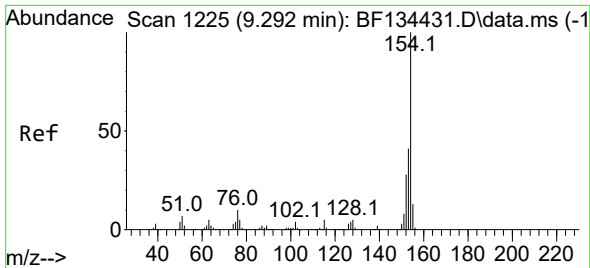
Tgt Ion: 330 Resp: 102212  
 Ion Ratio Lower Upper  
 330 100  
 332 96.9 78.8 118.2  
 141 29.6 25.4 38.2



#45  
 2-Fluorobiphenyl  
 Concen: 51.105 ng  
 RT: 9.216 min Scan# 1212  
 Delta R.T. 0.024 min  
 Lab File: BF134475.D  
 Acq: 25 Jul 2023 21:55

Tgt Ion: 172 Resp: 341579  
 Ion Ratio Lower Upper  
 172 100  
 171 35.8 28.8 43.2  
 170 23.0 18.7 28.1



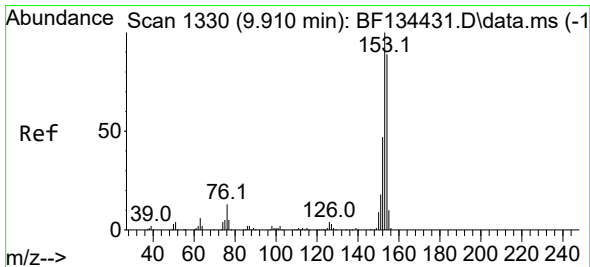
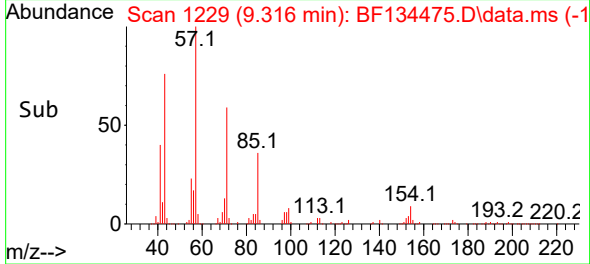
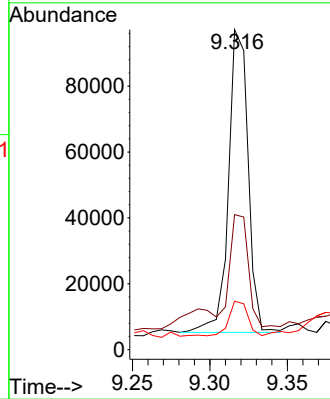
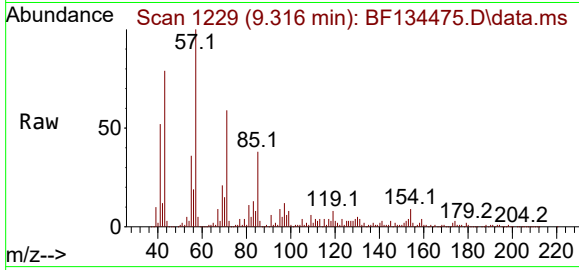


#46  
 1,1'-Biphenyl  
 Concen: 11.188 ng  
 RT: 9.316 min Scan# 11  
 Delta R.T. 0.024 min  
 Lab File: BF134475.D  
 Acq: 25 Jul 2023 21:55

Instrument :  
 BNA\_F  
 ClientSampleId :  
 SLUDGE-DRUM

Tgt Ion:154 Resp: 80909

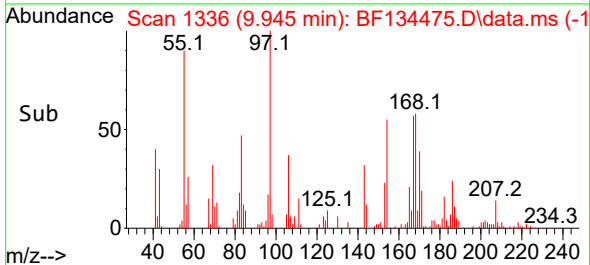
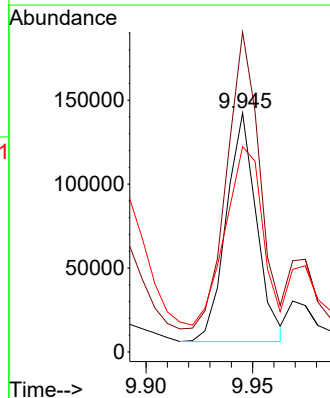
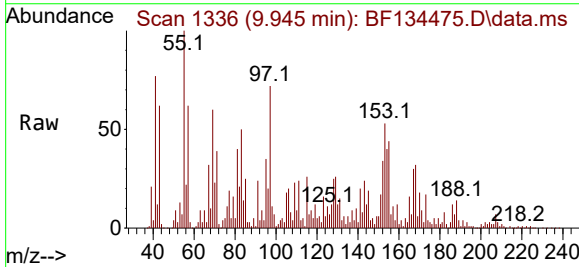
Ion	Ratio	Lower	Upper
154	100		
153	42.2	20.8	60.8
76	15.2	0.0	30.2



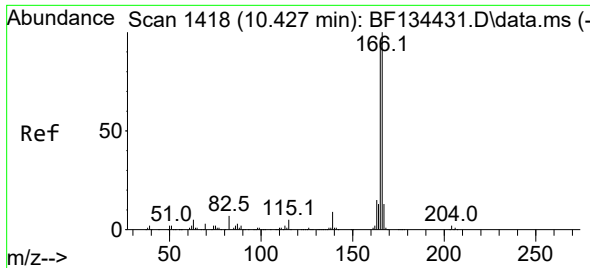
#52  
 Acenaphthene  
 Concen: 25.326 ng  
 RT: 9.945 min Scan# 1336  
 Delta R.T. 0.035 min  
 Lab File: BF134475.D  
 Acq: 25 Jul 2023 21:55

Tgt Ion:154 Resp: 134757

Ion	Ratio	Lower	Upper
154	100		
153	133.9	90.0	135.0
152	85.9	42.4	63.6#

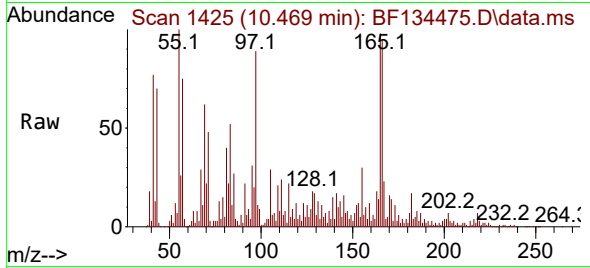




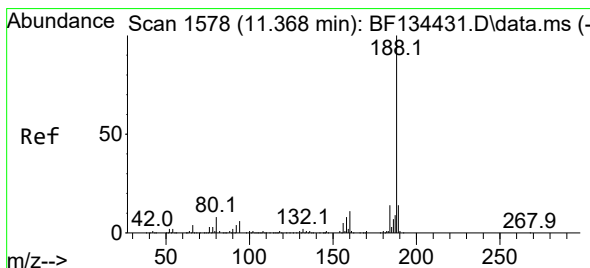
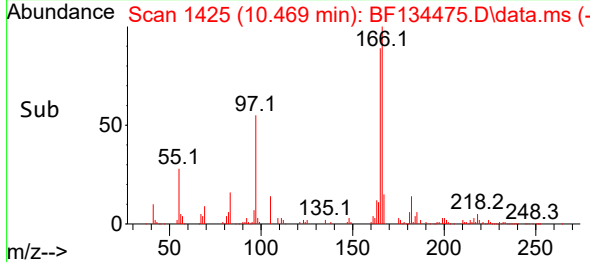
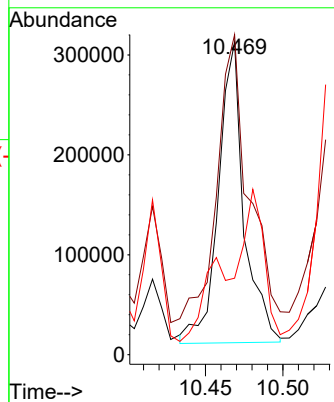


#58  
 Fluorene  
 Concen: 52.200 ng  
 RT: 10.469 min Scan# 1418  
 Delta R.T. 0.042 min  
 Lab File: BF134475.D  
 Acq: 25 Jul 2023 21:55

Instrument : BNA\_F  
 ClientSampleId : SLUDGE-DRUM

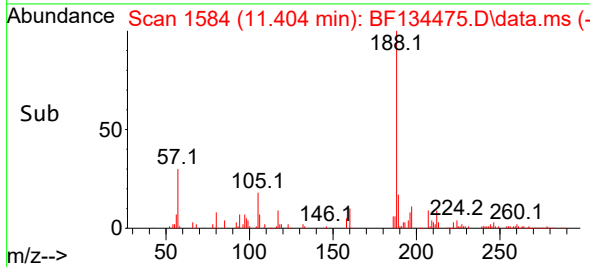
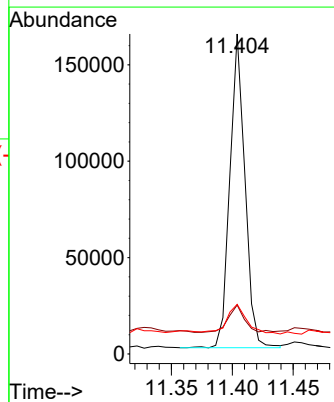
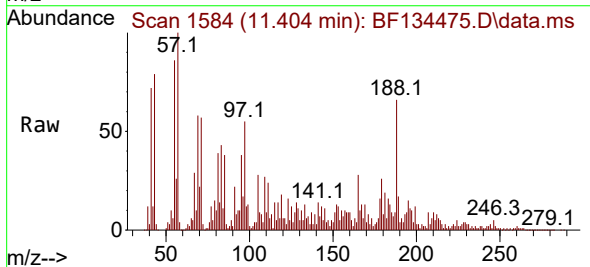


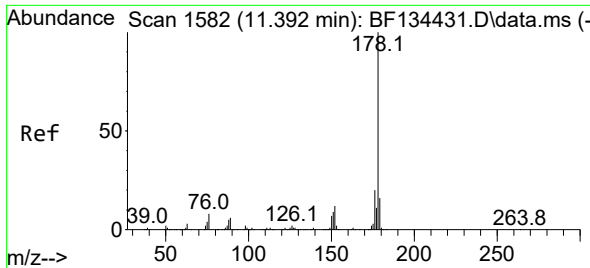
Tgt Ion:166 Resp: 344860  
 Ion Ratio Lower Upper  
 166 100  
 165 102.3 74.5 111.7  
 167 24.5 10.6 16.0#



#64  
 Phenanthrene-d10  
 Concen: 20.000 ng  
 RT: 11.404 min Scan# 1584  
 Delta R.T. 0.036 min  
 Lab File: BF134475.D  
 Acq: 25 Jul 2023 21:55

Tgt Ion:188 Resp: 139669  
 Ion Ratio Lower Upper  
 188 100  
 94 15.3 5.1 7.7#  
 80 15.5 6.6 9.8#

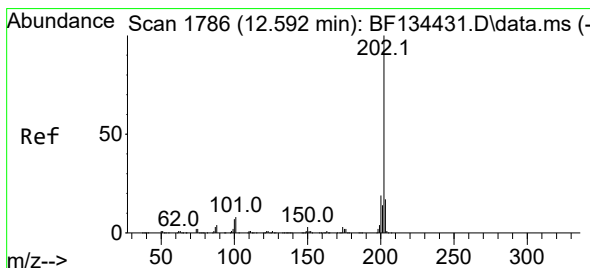
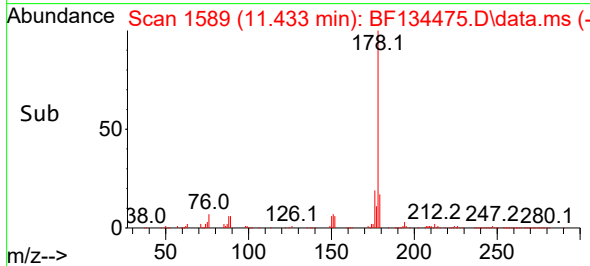
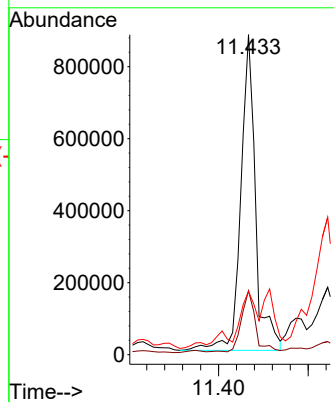
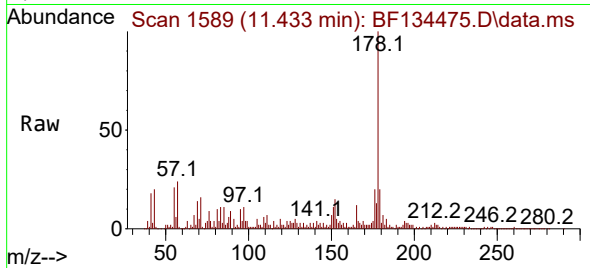




#71  
 Phenanthrene  
 Concen: 137.085 ng  
 RT: 11.433 min Scan# 11  
 Delta R.T. 0.041 min  
 Lab File: BF134475.D  
 Acq: 25 Jul 2023 21:55

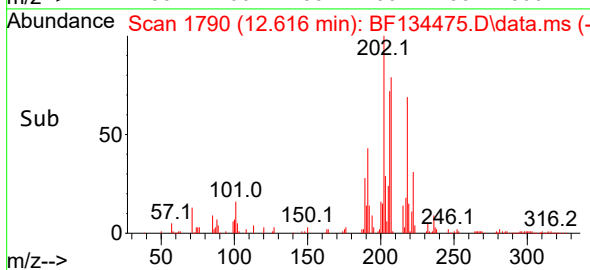
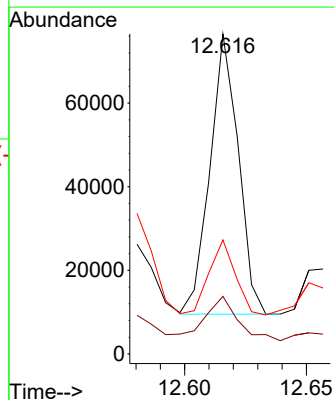
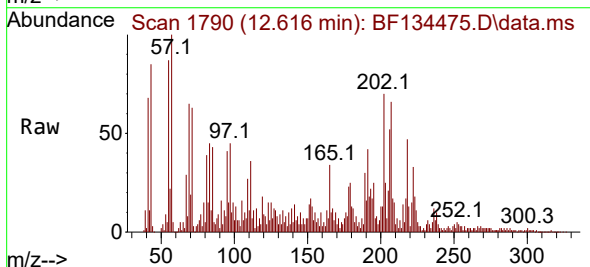
Instrument : BNA\_F  
 ClientSampleId : SLUDGE-DRUM

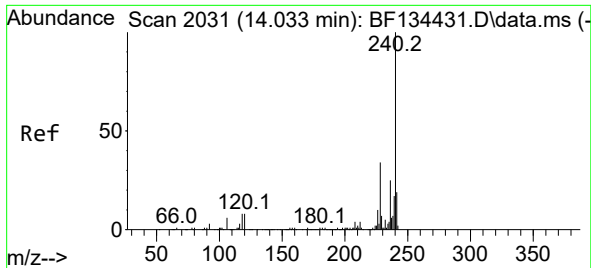
Tgt Ion:178 Resp: 1000374  
 Ion Ratio Lower Upper  
 178 100  
 176 20.0 15.8 23.6  
 179 19.8 12.7 19.1#



#75  
 Fluoranthene  
 Concen: 6.383 ng  
 RT: 12.616 min Scan# 1790  
 Delta R.T. 0.024 min  
 Lab File: BF134475.D  
 Acq: 25 Jul 2023 21:55

Tgt Ion:202 Resp: 54287  
 Ion Ratio Lower Upper  
 202 100  
 101 18.0 0.0 28.5  
 203 35.7 0.0 37.5

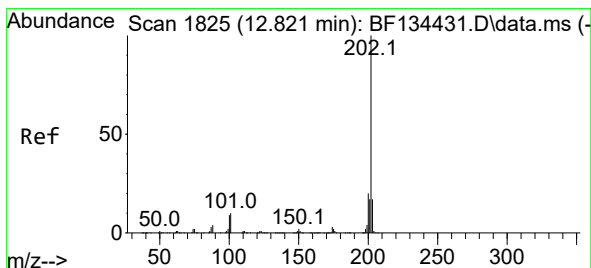
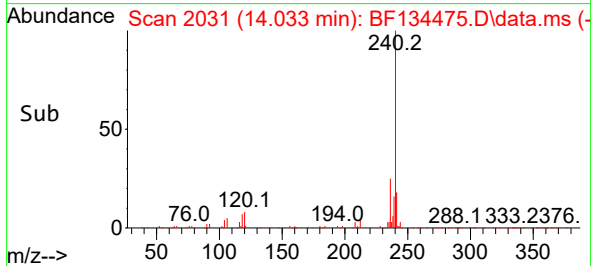
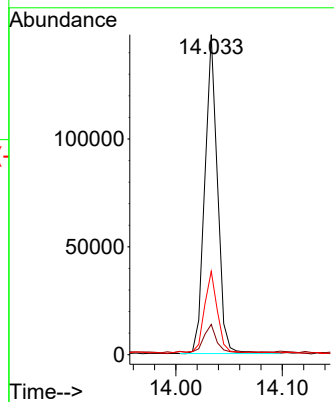
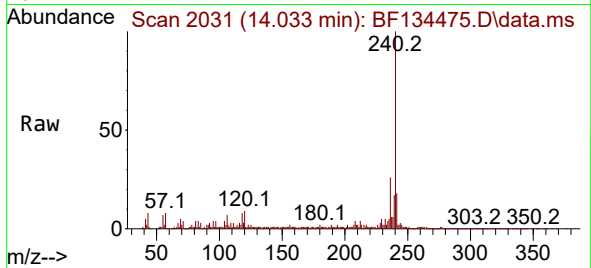




#76  
 Chrysene-d12  
 Concen: 20.000 ng  
 RT: 14.033 min Scan# 2031  
 Delta R.T. 0.000 min  
 Lab File: BF134475.D  
 Acq: 25 Jul 2023 21:55

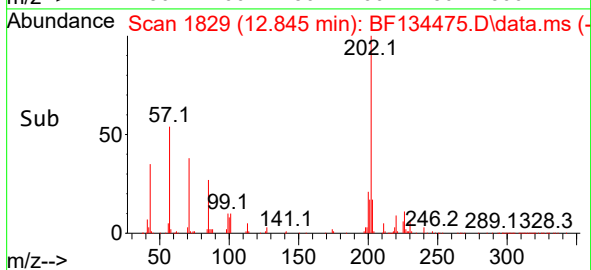
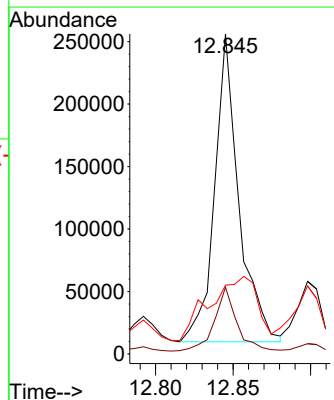
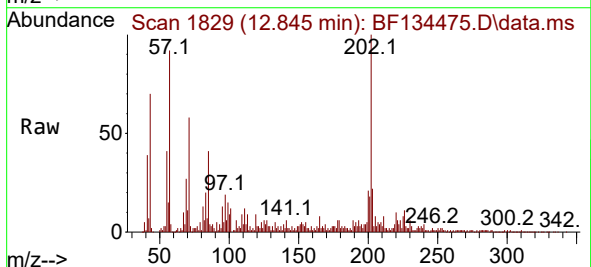
Instrument :  
 BNA\_F  
 ClientSampleId :  
 SLUDGE-DRUM

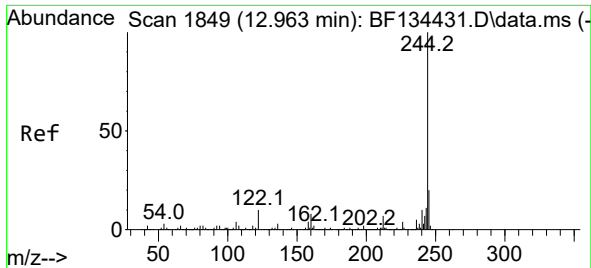
Tgt Ion:240 Resp: 122819  
 Ion Ratio Lower Upper  
 240 100  
 120 9.4 6.6 10.0  
 236 26.0 20.2 30.2



#78  
 Pyrene  
 Concen: 27.444 ng  
 RT: 12.845 min Scan# 1829  
 Delta R.T. 0.024 min  
 Lab File: BF134475.D  
 Acq: 25 Jul 2023 21:55

Tgt Ion:202 Resp: 268012  
 Ion Ratio Lower Upper  
 202 100  
 200 20.9 15.8 23.8  
 203 21.5 13.5 20.3#



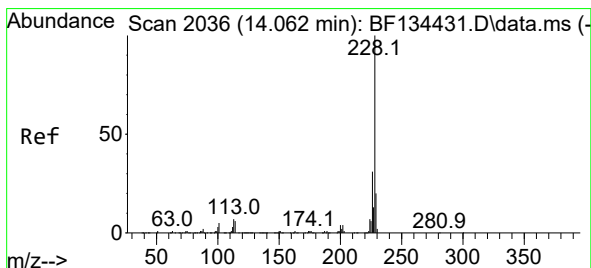
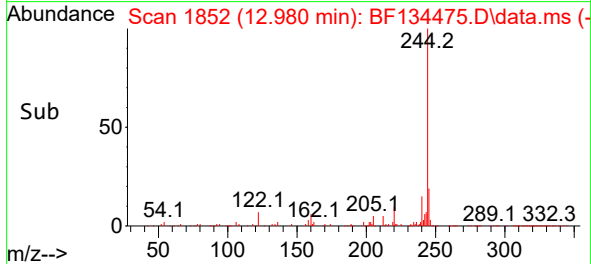
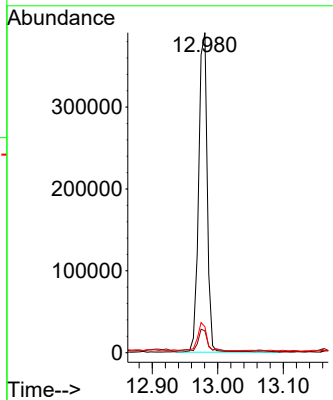
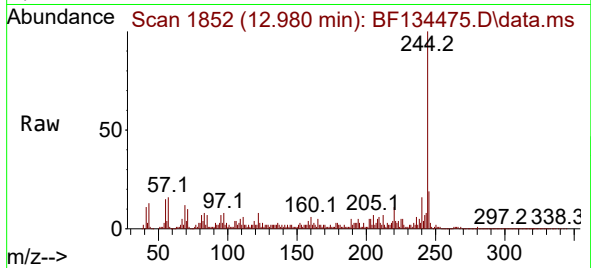


#79  
 Terphenyl-d14  
 Concen: 50.543 ng  
 RT: 12.980 min Scan# 1849  
 Delta R.T. 0.018 min  
 Lab File: BF134475.D  
 Acq: 25 Jul 2023 21:55

Instrument : BNA\_F  
 ClientSampleId : SLUDGE-DRUM

Tgt Ion:244 Resp: 355602

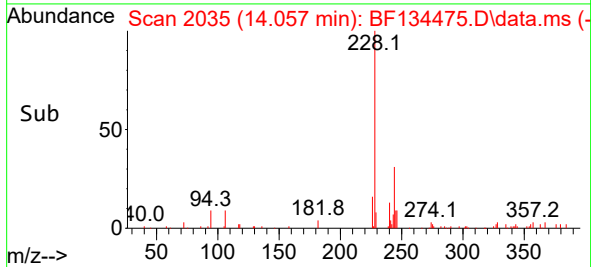
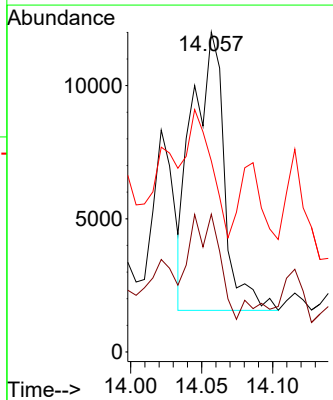
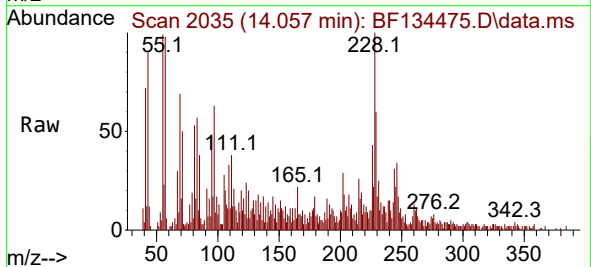
Ion	Ratio	Lower	Upper
244	100		
212	6.8	5.6	8.4
122	8.1	8.0	12.0

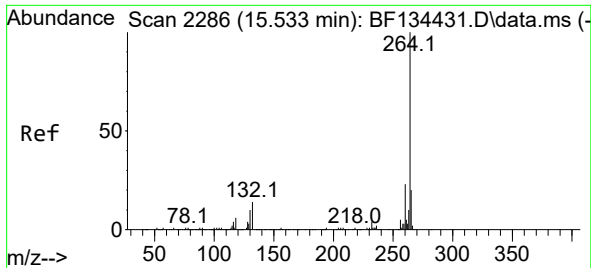


#83  
 Chrysene  
 Concen: 2.017 ng  
 RT: 14.057 min Scan# 2035  
 Delta R.T. -0.006 min  
 Lab File: BF134475.D  
 Acq: 25 Jul 2023 21:55

Tgt Ion:228 Resp: 16530

Ion	Ratio	Lower	Upper
228	100		
226	43.0	24.5	36.7#
229	59.7	15.8	23.8#





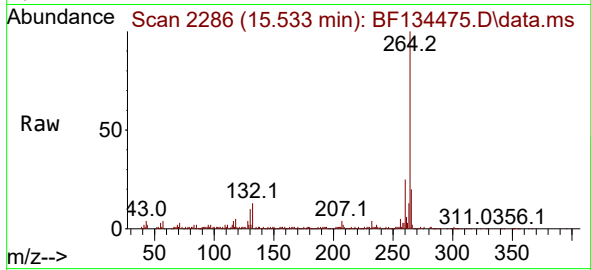
#86  
 Perylene-d12  
 Concen: 20.000 ng  
 RT: 15.533 min Scan# 21  
 Delta R.T. 0.000 min  
 Lab File: BF134475.D  
 Acq: 25 Jul 2023 21:55

Instrument :

BNA\_F

ClientSampleId :

SLUDGE-DRUM



Tgt Ion:264 Resp: 97949

Ion	Ratio	Lower	Upper
264	100		
260	24.6	18.4	27.6
265	19.6	15.8	23.8

