

Data Path : Z:\svoasrv\HPCHEM1\BNA_F\Data\BF072723\
 Data File : BF134502.D
 Acq On : 27 Jul 2023 11:47
 Operator : CG\JU
 Sample : PB154180BL
 Misc :
 ALS Vial : 3 Sample Multiplier: 1

Instrument :
 BNA_F
 ClientSampleId :
 PB154180BL

Integration Parameters: rteint.p
 Integrator: RTE
 Smoothing : ON Filtering: 5
 Sampling : 1 Min Area: 3 % of largest Peak
 Start Thrs: 0.2 Max Peaks: 100
 Stop Thrs : 0 Peak Location: TOP

If leading or trailing edge < 100 prefer < Baseline drop else tangent >
 Peak separation: 5

Method : Z:\svoasrv\HPCHEM1\BNA_F\Methods\8270-BF072423.M
 Title : ASP BNA STANDARDS FOR 5 POINT CALIBRATION

Signal : TIC: BF134502.D\data.ms

peak #	R.T. min	first scan	max scan	last scan	PK TY	peak height	corr. area	corr. % max.	% of total
1	5.463	571	574	591	rBV	305314	376982	42.57%	6.027%
2	6.469	742	745	767	rBV	211637	306847	34.65%	4.906%
3	6.822	802	805	817	rBV	533601	485072	54.77%	7.755%
4	7.387	898	901	920	rBV	174377	199645	22.54%	3.192%
5	8.104	1019	1023	1035	rBV	698524	666576	75.27%	10.657%
6	9.175	1201	1205	1220	rBV	465301	437979	49.46%	7.002%
7	9.857	1317	1321	1333	rBV	872730	773451	87.34%	12.366%
8	10.657	1453	1457	1471	rBV	249676	277604	31.35%	4.438%
9	11.351	1572	1575	1592	rVB	896118	885593	100.00%	14.159%
10	12.945	1842	1846	1855	rBV	482256	410988	46.41%	6.571%
11	14.010	2024	2027	2037	rBV	750175	747546	84.41%	11.952%
12	15.510	2277	2282	2294	rVB	399524	542810	61.29%	8.678%
13	17.386	2587	2601	2611	rBV6	32162	143672	16.22%	2.297%

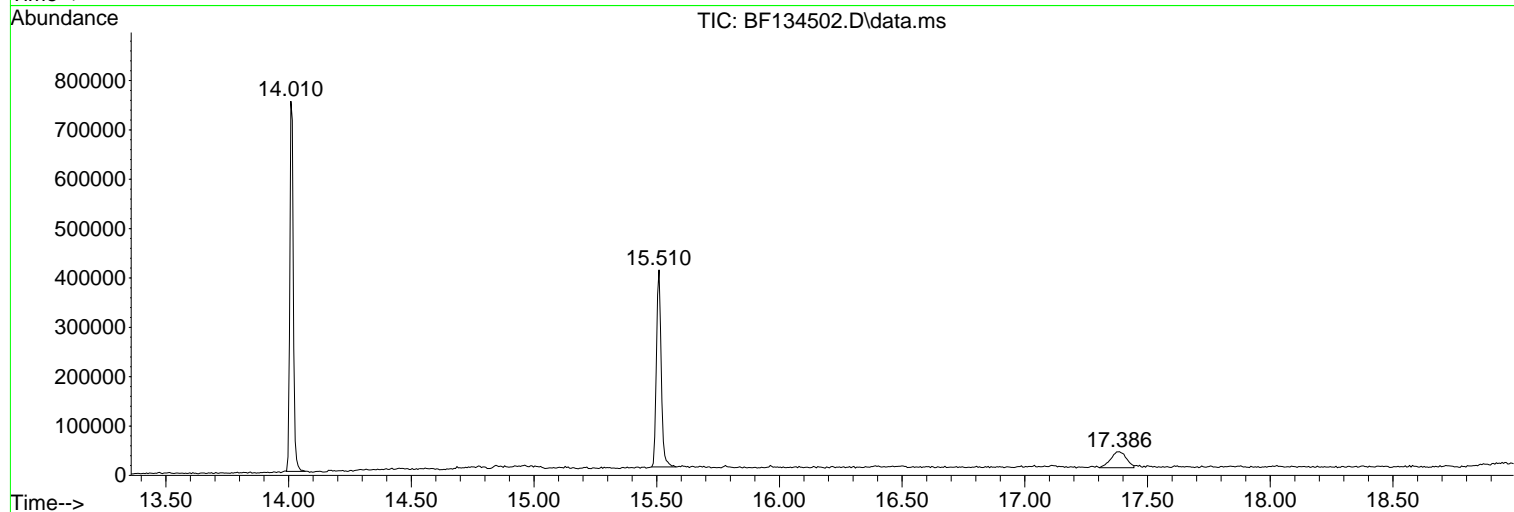
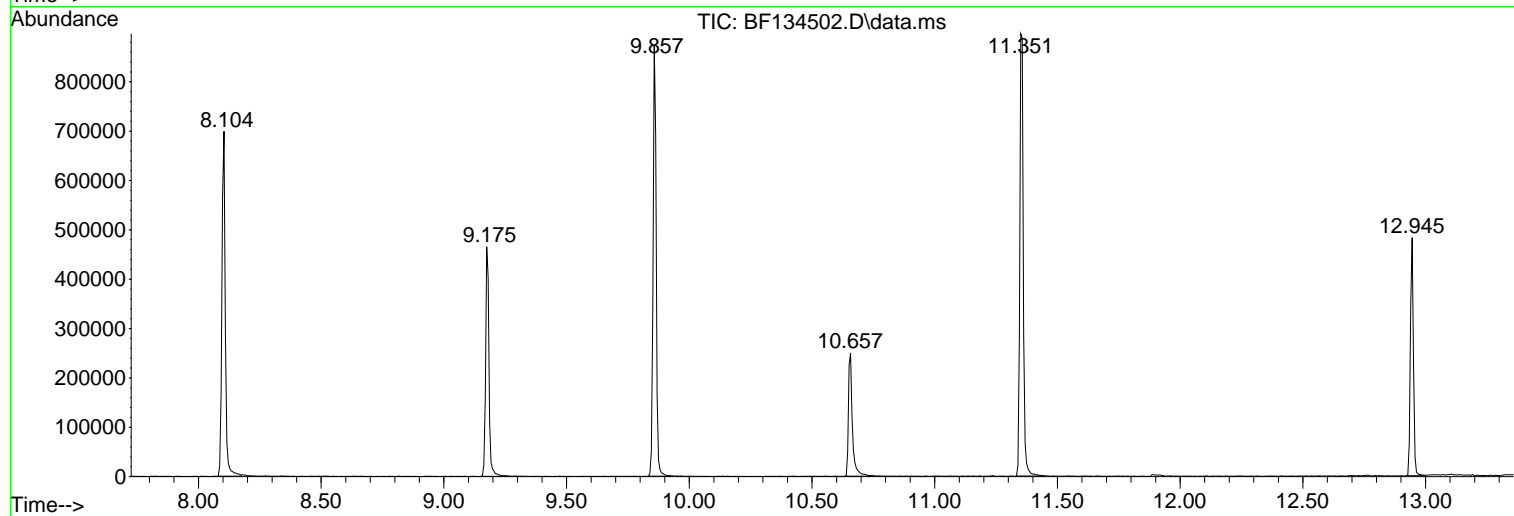
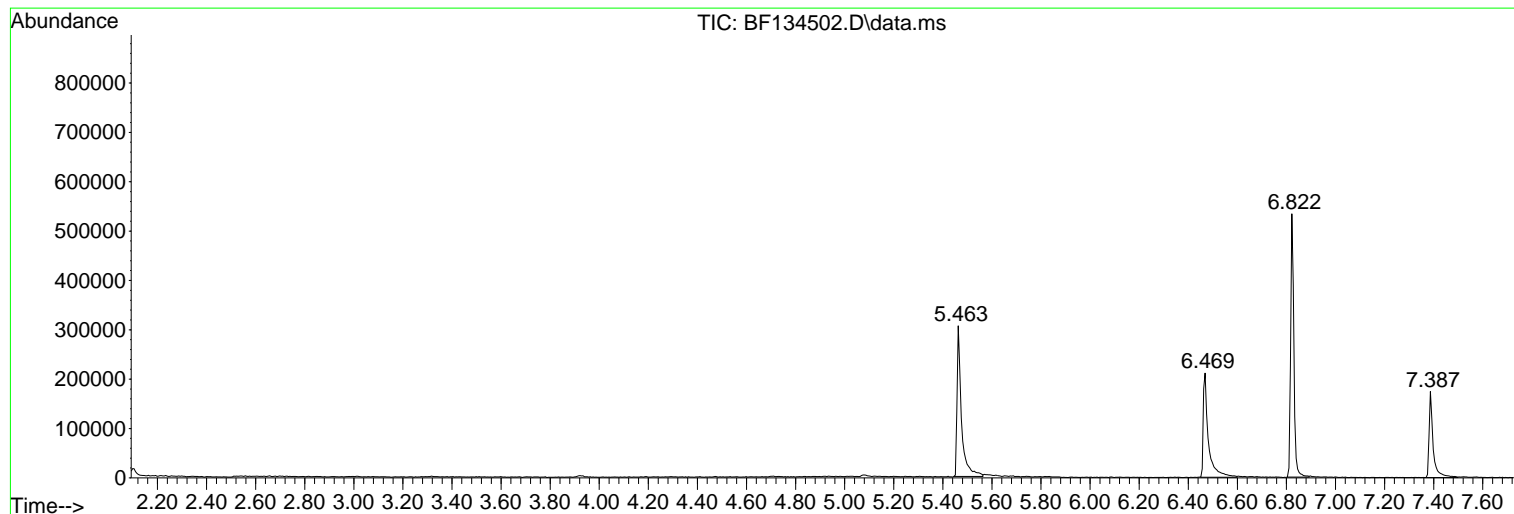
Sum of corrected areas: 6254765

Data Path : Z:\svoasrv\HPCHEM1\BNA_F\Data\BF072723\
Data File : BF134502.D
Acq On : 27 Jul 2023 11:47
Operator : CG\JU
Sample : PB154180BL
Misc :
ALS Vial : 3 Sample Multiplier: 1

Instrument :
BNA_F
ClientSampleId :
PB154180BL

Quant Method : Z:\svoasrv\HPCHEM1\BNA_F\Methods\8270-BF072423.M
Quant Title : ASP BNA STANDARDS FOR 5 POINT CALIBRATION

TIC Library : C:\Database\NIST20.L
TIC Integration Parameters: LSCINT.P



Data Path : Z:\svoasrv\HPCHEM1\BNA_F\Data\BF072723\
 Data File : BF134502.D
 Acq On : 27 Jul 2023 11:47
 Operator : CG\JU
 Sample : PB154180BL
 Misc :
 ALS Vial : 3 Sample Multiplier: 1

Instrument :
 BNA_F
 ClientSampleId :
 PB154180BL

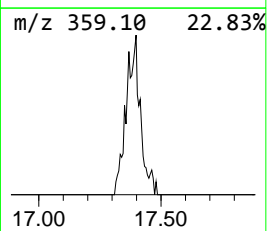
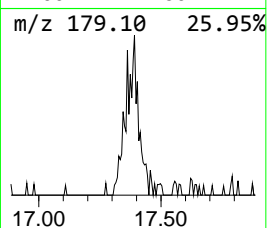
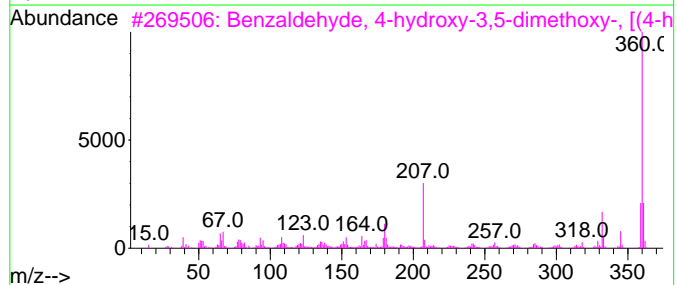
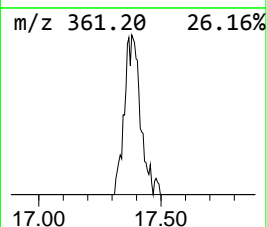
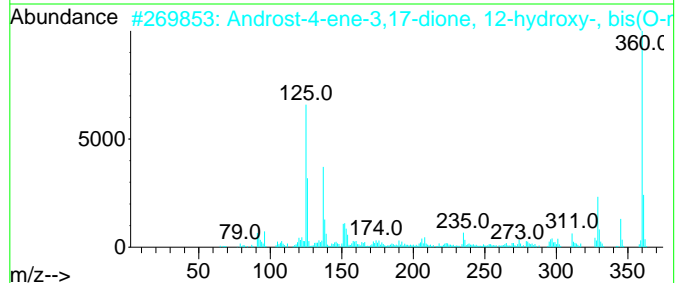
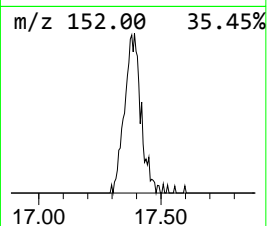
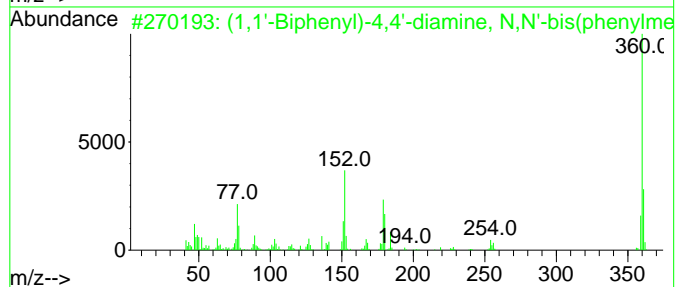
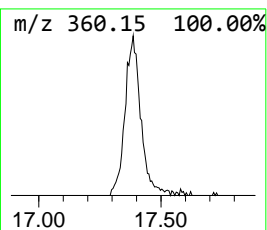
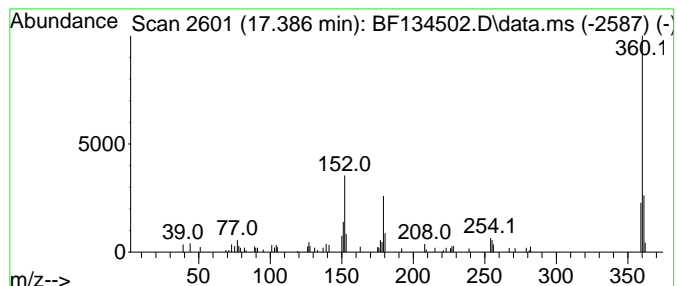
Quant Method : Z:\svoasrv\HPCHEM1\BNA_F\Methods\8270-BF072423.M
 Quant Title : ASP BNA STANDARDS FOR 5 POINT CALIBRATION

TIC Library : C:\Database\NIST20.L
 TIC Integration Parameters: LSCINT.P

 Peak Number 1 (1,1'-Biphenyl)-4,4'-diamin... Concentration Rank 1

R.T.	EstConc	Area	Relative to ISTD	R.T.
17.386	5.29 ng	143672	Perylene-d12	15.509

Hit#	of	5	Tentative ID	MW	MolForm	CAS#	Qual
1			(1,1'-Biphenyl)-4,4'-diamine, N,...	360	C26H20N2	006311-48-4	93
2			Androst-4-ene-3,17-dione, 12-hyd...	360	C21H32N2O3	069688-31-9	53
3			Benzaldehyde, 4-hydroxy-3,5-dime...	360	C18H20N2O6	014414-32-5	53
4			1,3,2-Dioxaborolane, bis(spiro[4...	360	C20H13B06	1000150-23-7	50
5			1H-isindole-1,3(2H)-dione, 2-[5...	360	C21H16N2O4	1000398-48-8	50



Data Path : Z:\svoasrv\HPCHEM1\BNA_F\Data\BF072723\
Data File : BF134502.D
Acq On : 27 Jul 2023 11:47
Operator : CG\JU
Sample : PB154180BL
Misc :
ALS Vial : 3 Sample Multiplier: 1

Instrument :
BNA_F
ClientSampleId :
PB154180BL

Quant Method : Z:\svoasrv\HPCHEM1\BNA_F\Methods\8270-BF072423.M
Quant Title : ASP BNA STANDARDS FOR 5 POINT CALIBRATION

TIC Library : C:\Database\NIST20.L
TIC Integration Parameters: LSCINT.P

TIC Top Hit name	RT	EstConc	Units	Response	--Internal Standard--			
					#	RT	Resp	Conc
(1,1'-Biphenyl)...	17.386	5.3	ng	143672	6	15.509	542810	20.0