

Data Path : Z:\SVOASRV\HPCHEM1\BNA F\DATA\BF073018\
 Data File : BF107792.D
 Acq On : 30 Jul 2018 11:17
 Operator : JU/SJ
 Sample : SSTDIC2.5
 Misc :
 ALS Vial : 3 Sample Multiplier: 1

Instrument :
 BNA_F
Client Sampled :
 SSTDIC2.5

Manual Integrations
APPROVED
 Sohil
 7/31/2018 2:42:07 PM

Quant Time: Jul 30 14:41:34 2018
 Quant Method : Z:\SVOASRV\HPCHEM1\BNA F\METHODS\8270-BF073018.M
 Quant Title : ASP BNA STANDARDS FOR 5 POINT CALIBRATION
 QLast Update : Mon Jul 30 13:05:29 2018
 Response via : Initial Calibration

Internal Standards	R.T.	QIon	Response	Conc	Units	Dev(Min)
1) 1,4-Dichlorobenzene-d4	6.96	152	111220	20.00	ng	0.00
21) Naphthalene-d8	8.24	136	650279	20.00	ng	0.00
38) Acenaphthene-d10	10.00	164	299848	20.00	ng	0.00
63) Phenanthrene-d10	11.50	188	654331	20.00	ng	0.00
75) Chrysene-d12	14.15	240	625684	20.00	ng	0.00
86) Perylene-d12	15.68	264	631142	20.00	ng	0.00

System Monitoring Compounds

5) 2-Fluorophenol	0.00	112	0d	0.00	ng	
7) Phenol-d6	6.64	99	54757m	6.59	ng	0.04
23) Nitrobenzene-d5	0.00	82	0d	0.00	ng	
41) 2,4,6-Tribromophenol	10.80	330	17727	5.20	ng	0.00
44) 2-Fluorobiphenyl	9.31	172	123063	6.24	ng	0.00
78) Terphenyl-d14	13.08	244	146594	6.00	ng	0.00

Target Compounds

Target Compounds	R.T.	QIon	Response	Conc	Units	Qvalue
8) 2-Chlorophenol	6.77	128	23770m	3.207	ng	
9) Benzaldehyde	6.64	77	13068m	2.406	ng	
10) Phenol	6.67	94	30092m	3.081	ng	
12) 1,3-Dichlorobenzene	6.91	146	22224	2.645	ng	89
13) 1,4-Dichlorobenzene	6.98	146	20479m	2.378	ng	
14) 1,2-Dichlorobenzene	7.13	146	23795m	3.079	ng	
16) 2,2'-oxybis(1-Chloropropan	7.22	45	35840	2.623	ng	92
18) Hexachloroethane	7.47	117	9852	3.262	ng	93
19) n-Nitroso-di-n-propylamine	7.35	70	12542	2.337	ng	# 86
25) Isophorone	7.77	82	34954	1.699	ng	# 98
26) 2-Nitrophenol	7.90	139	11180m	2.399	ng	
27) 2,4-Dimethylphenol	7.91	122	23862m	2.705	ng	
28) bis(2-Chloroethoxy)methane	8.00	93	30060m	2.186	ng	
29) 2,4-Dichlorophenol	8.16	162	20002m	2.218	ng	
30) 1,2,4-Trichlorobenzene	8.18	180	23721	2.342	ng	95
31) Naphthalene	8.27	128	74463	2.604	ng	99
34) Hexachlorobutadiene	8.37	225	15803	2.626	ng	98
36) 4-Chloro-3-methylphenol	8.83	107	25838m	2.580	ng	
37) 2-Methylnaphthalene	8.96	142	42339	2.137	ng	94
39) 1,2,4,5-Tetrachlorobenzene	9.12	216	25873	2.587	ng	# 96
42) 2,4,6-Trichlorophenol	9.25	196	10524	1.644	ng	93
43) 2,4,5-Trichlorophenol	9.31	196	13519m	2.021	ng	
45) 1,1'-Biphenyl	9.42	154	73064	2.797	ng	98
46) 2-Chloronaphthalene	9.45	162	52198	2.614	ng	97
47) 2-Nitroaniline	9.59	65	17665m	3.035	ng	
48) Acenaphthylene	9.87	152	84861	2.829	ng	98
49) Dimethylphthalate	9.71	163	56567	2.503	ng	99
50) 2,6-Dinitrotoluene	9.78	165	10383	2.314	ng	90
51) Acenaphthene	10.03	154	51565	2.744	ng	99
54) Dibenzofuran	10.21	168	73345	2.651	ng	99
56) 2,4-Dinitrotoluene	10.21	165	14752m	2.724	ng	
57) Fluorene	10.55	166	59255	3.002	ng	92
58) 2,3,4,6-Tetrachlorophenol	10.34	232	14026	2.519	ng	# 86
59) Diethylphthalate	10.41	149	62573	2.651	ng	98

Data Path : Z:\SVOASRV\HPCHEM1\BNA F\DATA\BF073018\
 Data File : BF107792.D
 Acq On : 30 Jul 2018 11:17
 Operator : JU/SJ
 Sample : SSTDIC2.5
 Misc :
 ALS Vial : 3 Sample Multiplier: 1

Instrument :
 BNA_F
 ClientSampleId :
 SSTDIC2.5

Manual Integrations
 APPROVED

Sohil
 7/31/2018 2:42:07 PM

Quant Time: Jul 30 14:41:34 2018
 Quant Method : Z:\SVOASRV\HPCHEM1\BNA F\METHODS\8270-BF073018.M
 Quant Title : ASP BNA STANDARDS FOR 5 POINT CALIBRATION
 QLast Update : Mon Jul 30 13:05:29 2018
 Response via : Initial Calibration

Internal Standards	R.T.	QIon	Response	Conc	Units	Dev(Min)
60) 4-Chlorophenyl-phenylether	10.54	204	31010	2.779	ng	90
61) 4-Nitroaniline	10.64	138	13061m	2.848	ng	
62) Azobenzene	10.70	77	61741	2.790	ng	93
65) n-Nitrosodiphenylamine	10.67	169	55142	2.481	ng	96
66) 4-Bromophenyl-phenylether	11.04	248	19034	2.471	ng	# 84
67) Hexachlorobenzene	11.10	284	21415	2.527	ng	# 85
68) Atrazine	11.18	200	15088	2.224	ng	89
70) Phenanthrene	11.52	178	78442	2.460	ng	96
71) Anthracene	11.58	178	95848	2.986	ng	100
72) Carbazole	11.75	167	88102	2.639	ng	97
73) Di-n-butylphthalate	12.04	149	102478	2.711	ng	100
74) Fluoranthene	12.71	202	100726	2.944	ng	94
76) Benzidine	12.87	184	45954	2.550	ng	98
77) Pyrene	12.95	202	108336	2.531	ng	96
79) Butylbenzylphthalate	13.55	149	45995	2.499	ng	88
80) Benzo(a)anthracene	14.14	228	90691	2.473	ng	99
81) 3,3'-Dichlorobenzidine	14.11	252	37337	3.216	ng	97
82) Chrysene	14.18	228	99311	2.820	ng	97
83) Bis(2-ethylhexyl)phthalate	14.09	149	63534	2.446	ng	99
84) Di-n-octyl phthalate	14.71	149	104030	2.577	ng	# 99
85) Indeno(1,2,3-cd)pyrene	17.27	276	81974	2.746	ng	94
87) Benzo(b)fluoranthene	15.22	252	70816	2.050	ng	98
88) Benzo(k)fluoranthene	15.25	252	97258	2.874	ng	98
89) Benzo(a)pyrene	15.62	252	87130	2.758	ng	95
90) Dibenzo(a,h)anthracene	17.28	278	68838	2.520	ng	94
91) Benzo(g,h,i)perylene	17.75	276	65435	2.429	ng	94

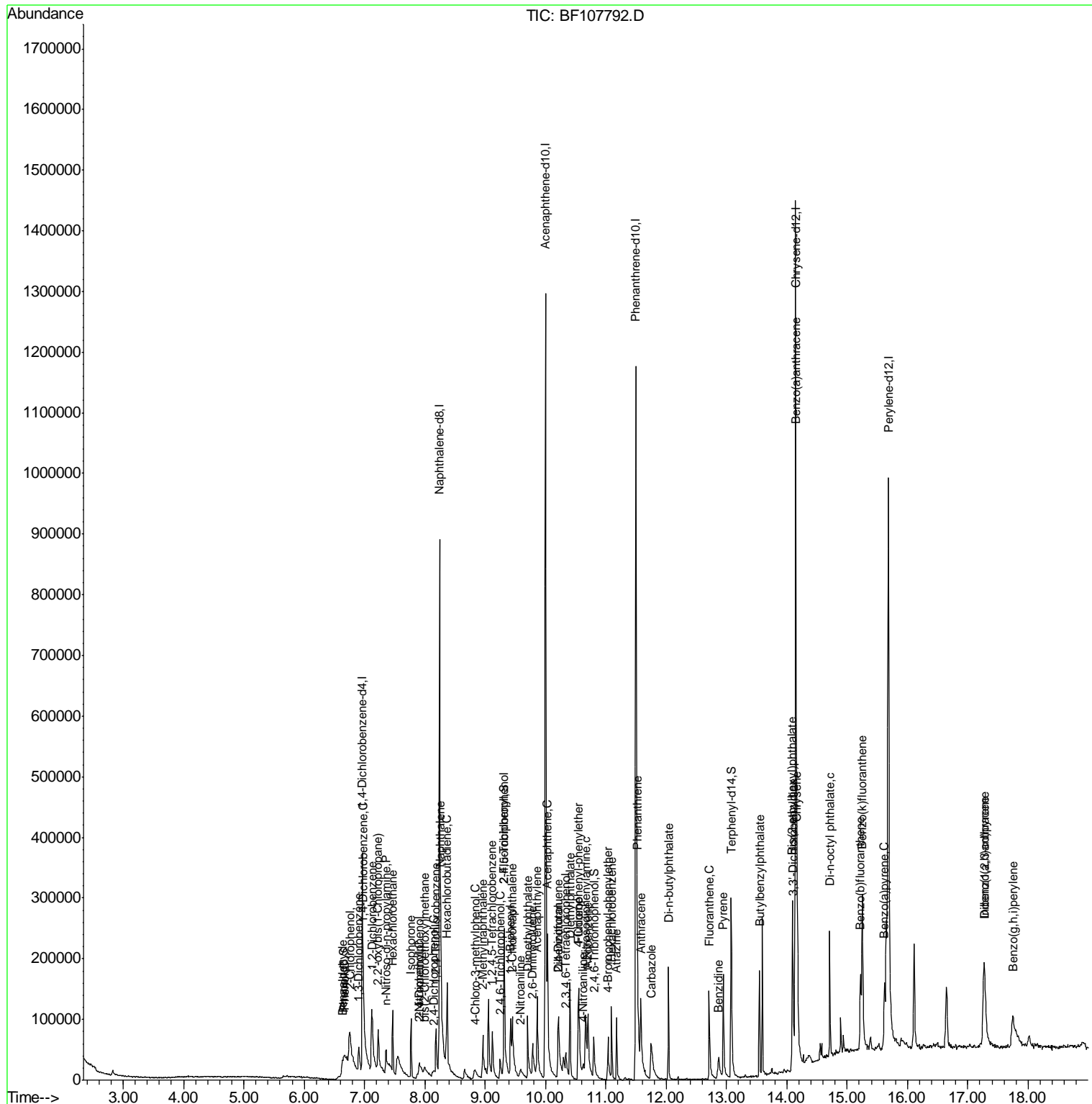
(#) = qualifier out of range (m) = manual integration (+) = signals summed

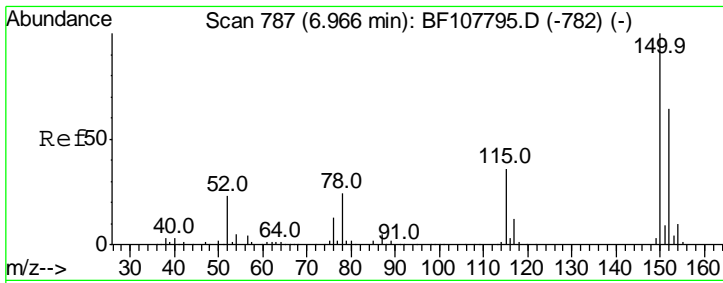
Data Path : Z:\SVOASRV\HPCHEM1\BNA F\DATA\BF073018\
 Data File : BF107792.D
 Acq On : 30 Jul 2018 11:17
 Operator : JU/SJ
 Sample : SSTDICC2.5
 Misc :
 ALS Vial : 3 Sample Multiplier: 1

Instrument :
 BNA_F
 Client Sampled :
 SSTDICC2.5

Manual Integrations
 APPROVED
 Sohil
 7/31/2018 2:42:07 PM

Quant Time: Jul 30 14:41:34 2018
 Quant Method : Z:\SVOASRV\HPCHEM1\BNA F\METHODS\8270-BF073018.M
 Quant Title : ASP BNA STANDARDS FOR 5 POINT CALIBRATION
 QLast Update : Mon Jul 30 13:05:29 2018
 Response via : Initial Calibration





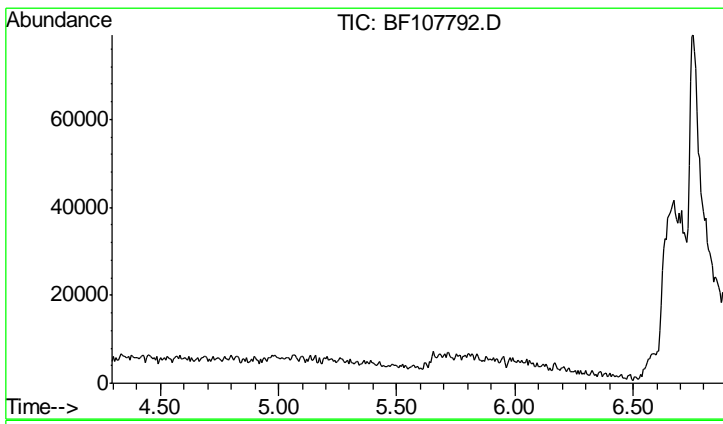
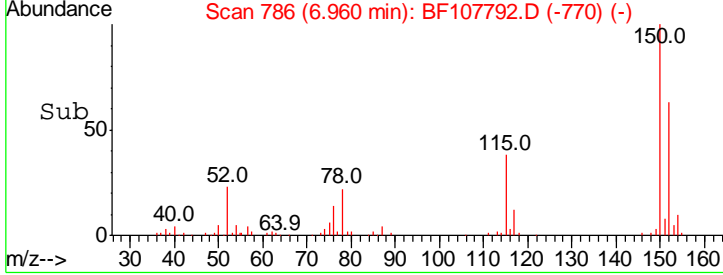
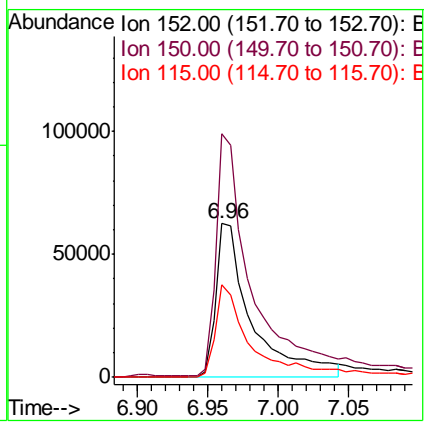
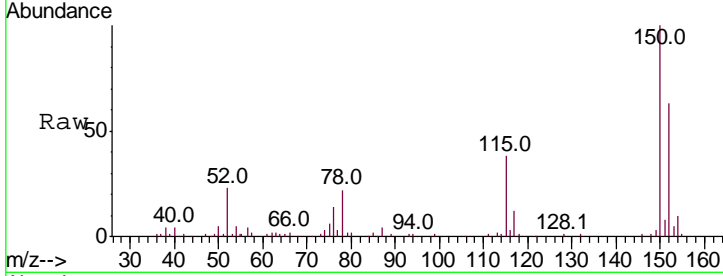
#1
 1,4-Dichlorobenzene-d4
 Concen: 20.000 ng
 RT: 6.96 min Scan# 786
 Delta R.T. -0.01 min
 Lab File: BF107792.D
 Acq: 30 Jul 2018 11:17

Instrument :
 BNA_F
ClientSampled :
 SSTDICC2.5

Tgt Ion: 152 Resp: 111220

Ion	Ratio	Lower	Upper
152	100		
150	158.7	124.6	186.8
115	60.4	50.1	75.1

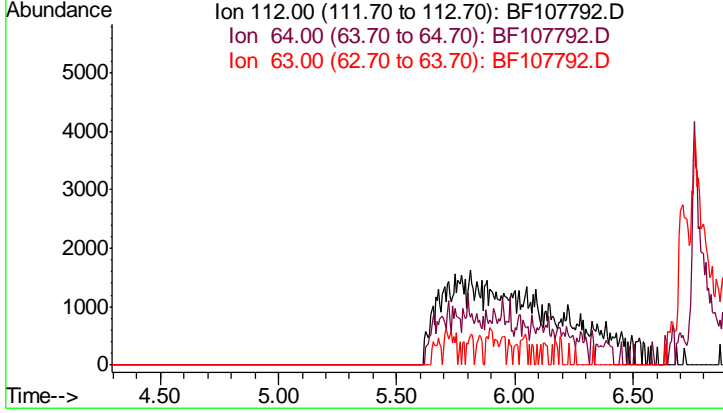
Manual Integrations
APPROVED
 Sohil
 7/31/2018 2:42:07 PM

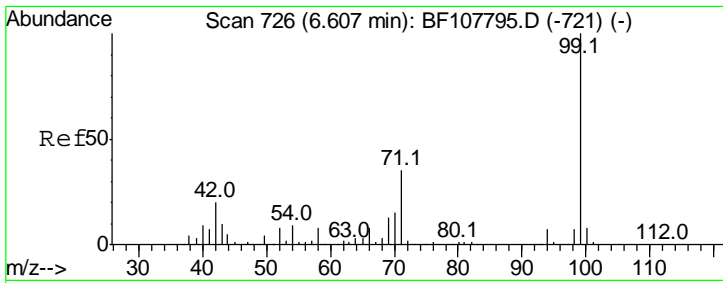


#5
 2-Fluorophenol
 Concen: 0.000 ng
 Expected RT: 5.60 min
 Lab File: BF107792.D
 Acq: 30 Jul 2018 11:17

Tgt Ion: 112

Sig	Exp Ratio
112	100
64	59.9
63	29.6





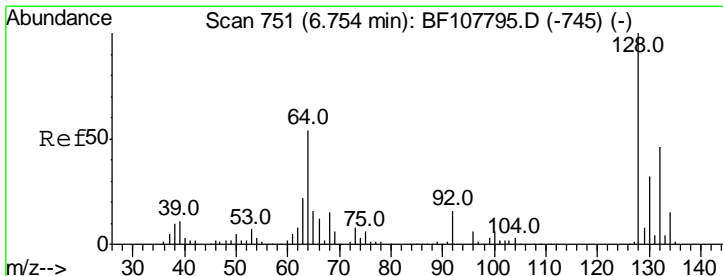
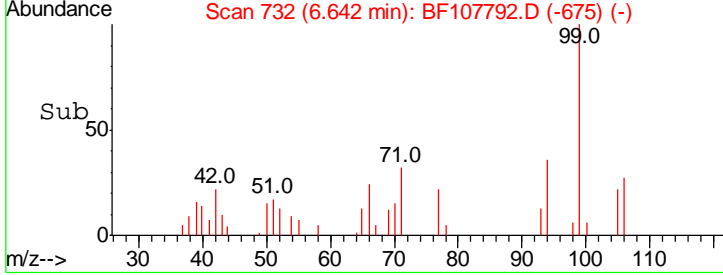
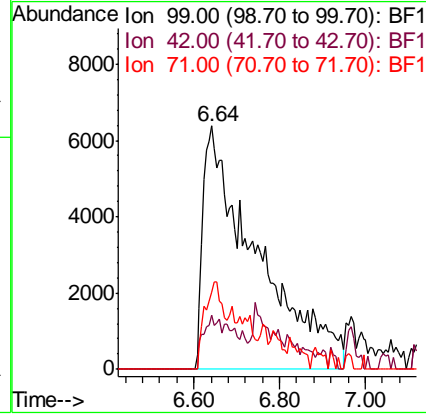
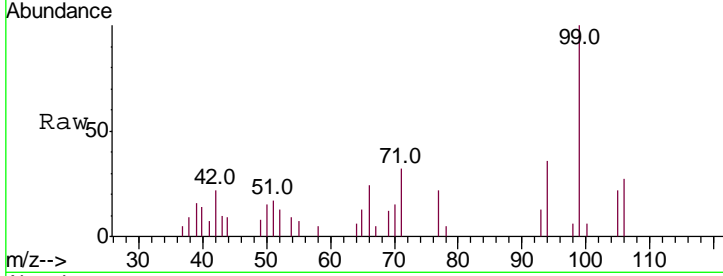
#7
 Phenol-d6
 Concen: 6.592 ng m
 RT: 6.64 min Scan# 732
 Delta R.T. 0.04 min
 Lab File: BF107792.D
 Acq: 30 Jul 2018 11:17

Instrument :
 BNA_F
ClientSampled :
 SSTDICC2.5

Tgt Ion	Resp	Lower	Upper
99	100		
42	22.2	14.5	21.7#
71	31.6	25.4	38.0

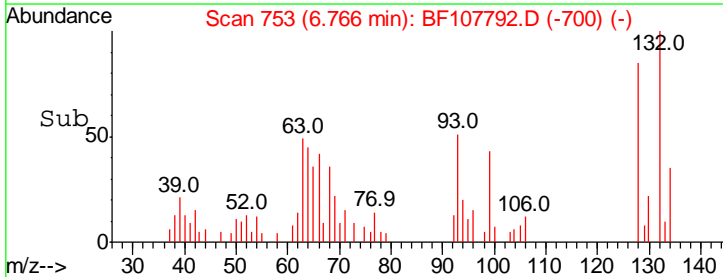
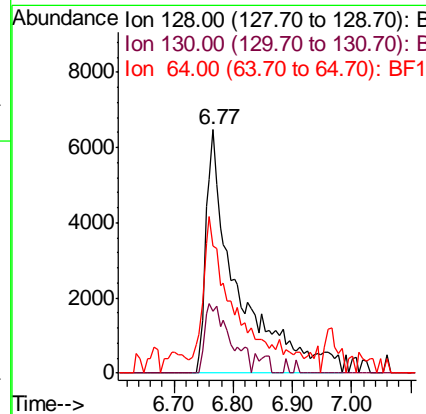
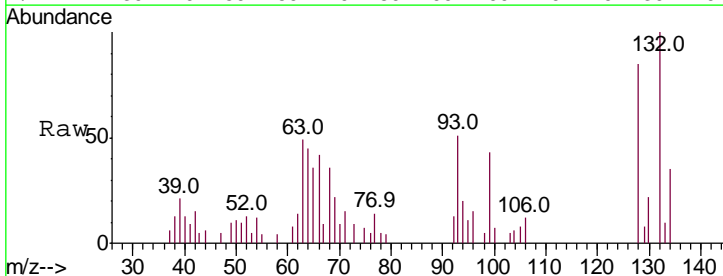
Manual Integrations
APPROVED

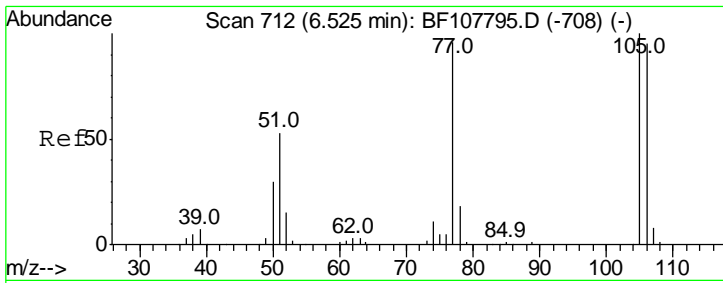
Sohil
 7/31/2018 2:42:07 PM



#8
 2-Chlorophenol
 Concen: 3.207 ng m
 RT: 6.77 min Scan# 753
 Delta R.T. 0.01 min
 Lab File: BF107792.D
 Acq: 30 Jul 2018 11:17

Tgt Ion	Resp	Lower	Upper
128	100		
130	25.3	13.0	53.0
64	52.4	29.4	69.4





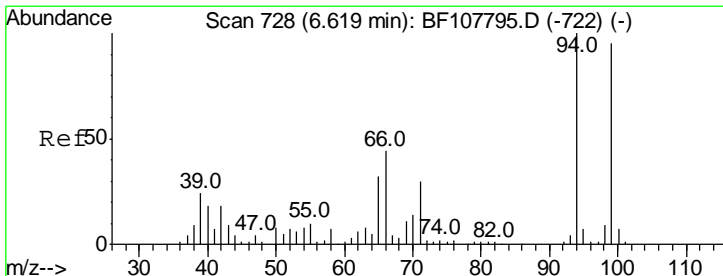
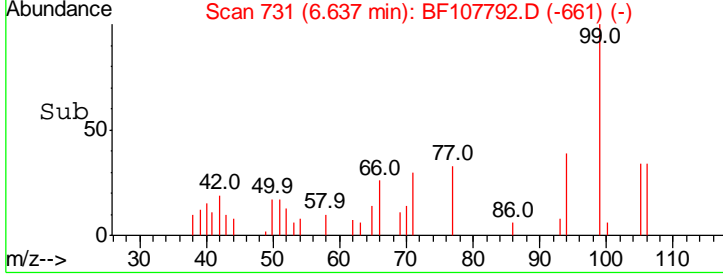
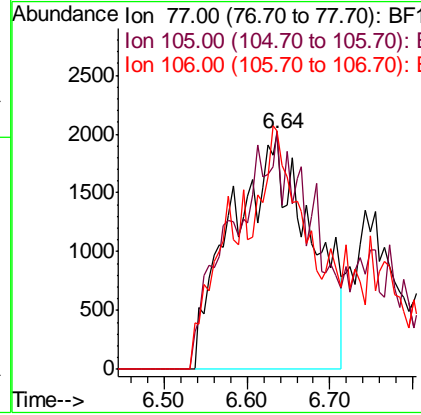
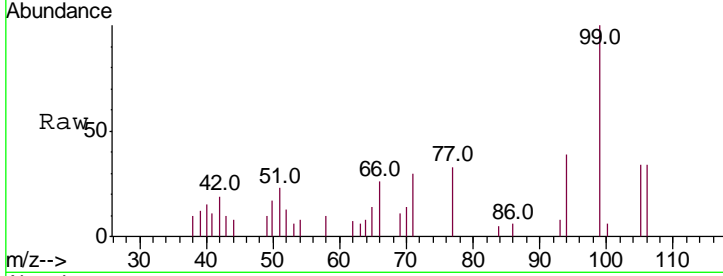
#9
Benzaldehyde
Concen: 2.406 ng m
RT: 6.64 min Scan# 731
Delta R.T. 0.11 min
Lab File: BF107792.D
Acq: 30 Jul 2018 11:17

Instrument :
BNA_F
ClientSampled :
SSTDICC2.5

Tgt Ion	Resp	Lower	Upper
77	13068		
77	100		
105	101.3	81.1	121.1
106	101.3	74.5	114.5

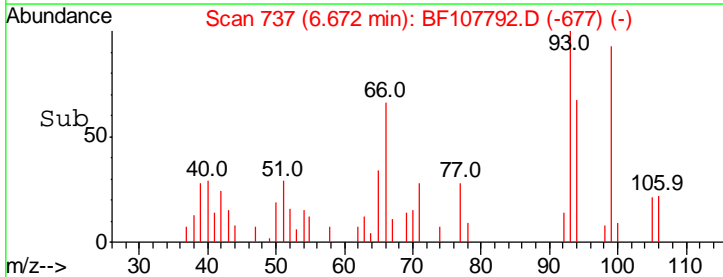
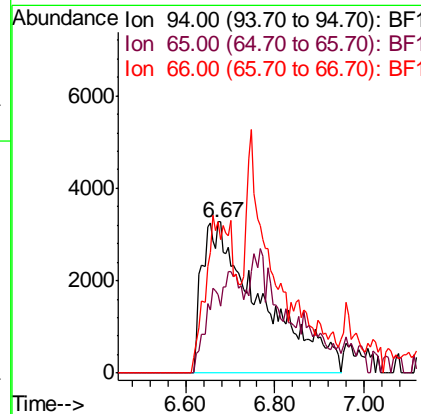
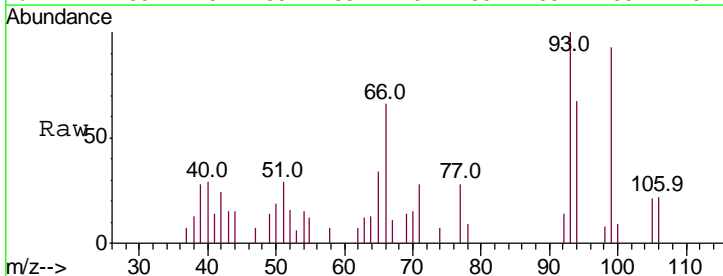
Manual Integrations
APPROVED

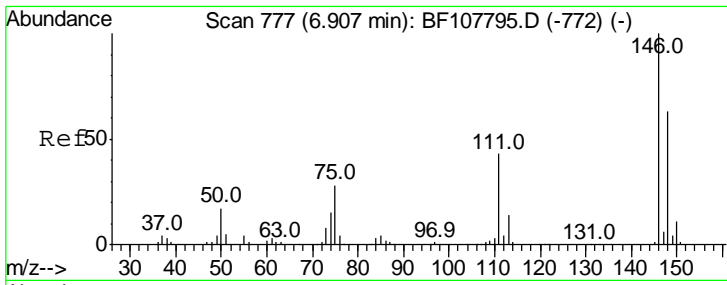
Sohil
7/31/2018 2:42:07 PM



#10
Phenol
Concen: 3.081 ng m
RT: 6.67 min Scan# 737
Delta R.T. 0.05 min
Lab File: BF107792.D
Acq: 30 Jul 2018 11:17

Tgt Ion	Resp	Lower	Upper
94	30092		
94	100		
65	51.5	7.9	47.9#
66	99.9	16.2	56.2#



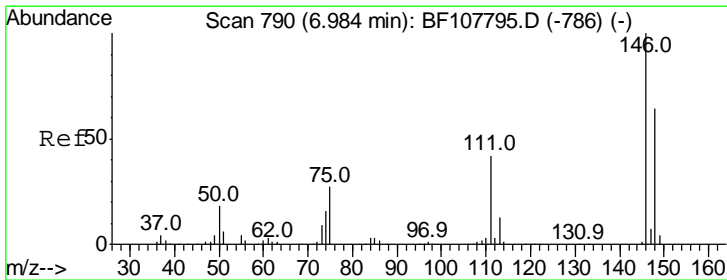
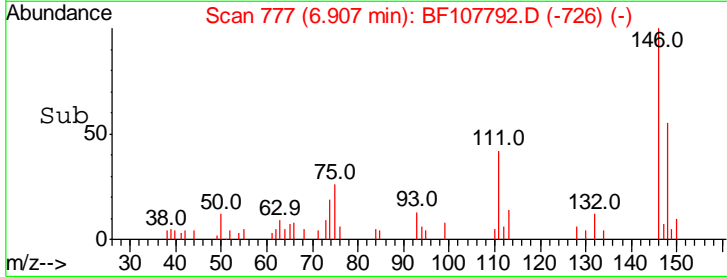
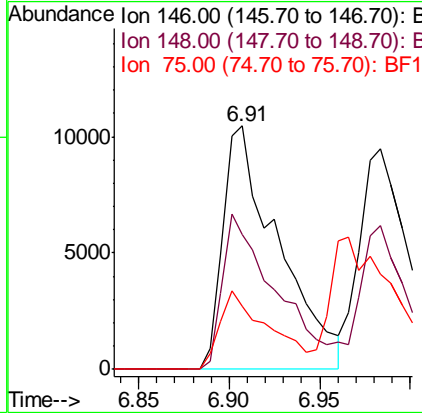
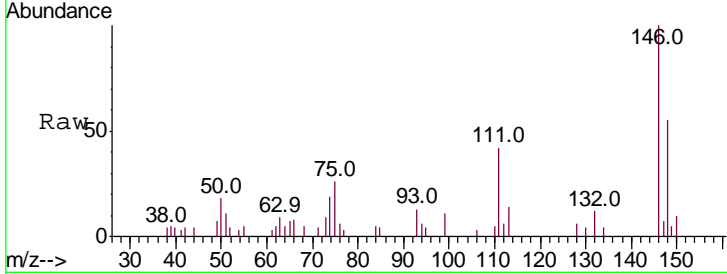


#12
 1,3-Dichlorobenzene
 Concen: 2.645 ng
 RT: 6.91 min Scan# 777
 Delta R.T. 0.00 min
 Lab File: BF107792.D
 Acq: 30 Jul 2018 11:17

Instrument :
 BNA_F
 ClientSampled :
 SSTDICC2.5

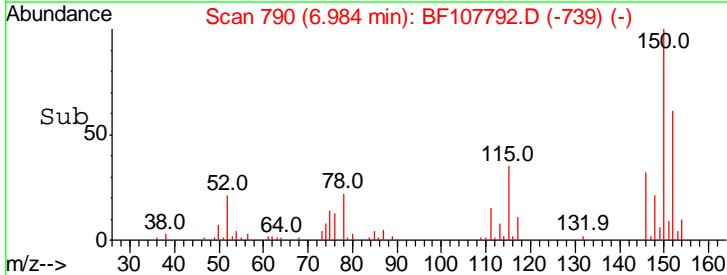
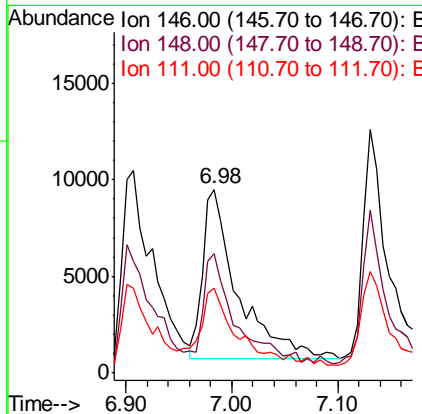
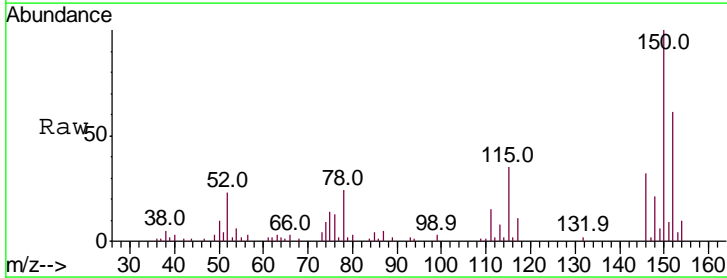
Tgt Ion	Ratio	Lower	Upper
146	100		
148	55.4	51.8	77.8
75	26.0	24.2	36.4

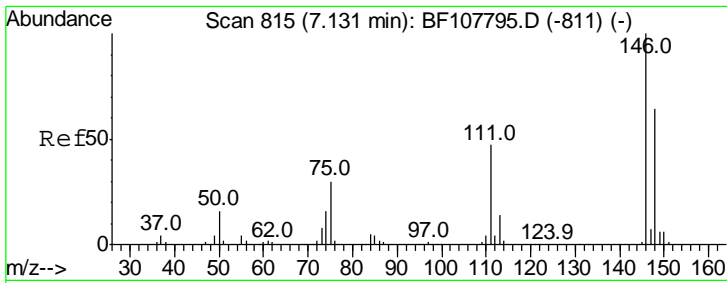
Manual Integrations
APPROVED
 Sohil
 7/31/2018 2:42:07 PM



#13
 1,4-Dichlorobenzene
 Concen: 2.378 ng m
 RT: 6.98 min Scan# 790
 Delta R.T. 0.00 min
 Lab File: BF107792.D
 Acq: 30 Jul 2018 11:17

Tgt Ion	Ratio	Lower	Upper
146	100		
148	65.3	50.8	76.2
111	46.2	34.2	51.2



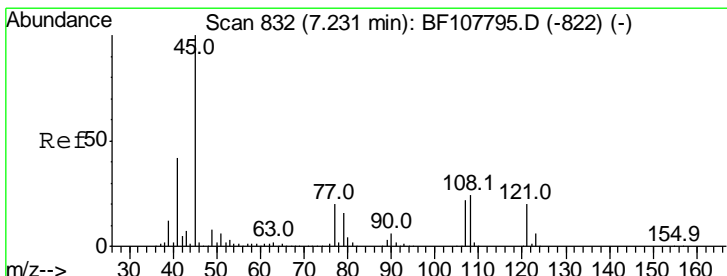
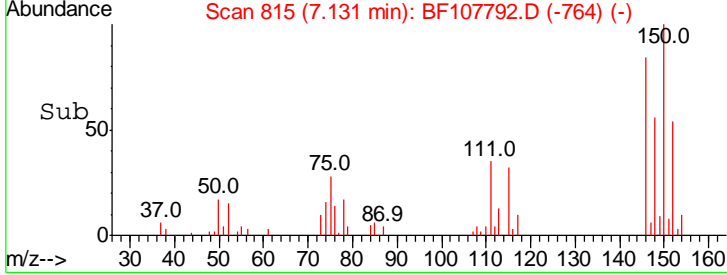
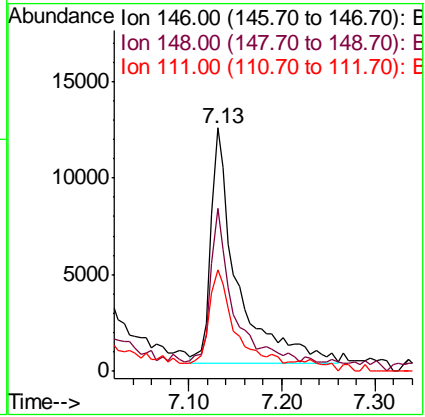
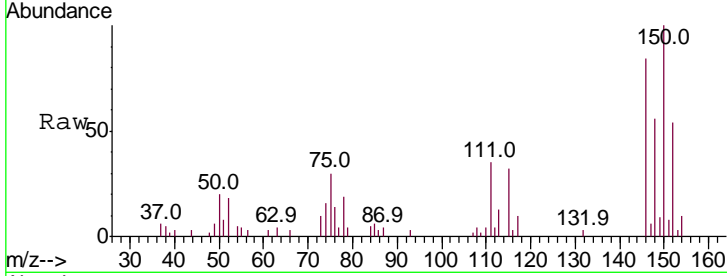


#14
 1,2-Dichlorobenzene
 Concen: 3.079 ng m
 RT: 7.13 min Scan# 815
 Delta R.T. 0.00 min
 Lab File: BF107792.D
 Acq: 30 Jul 2018 11:17

Instrument :
 BNA_F
 ClientSampled :
 SSTDICC2.5

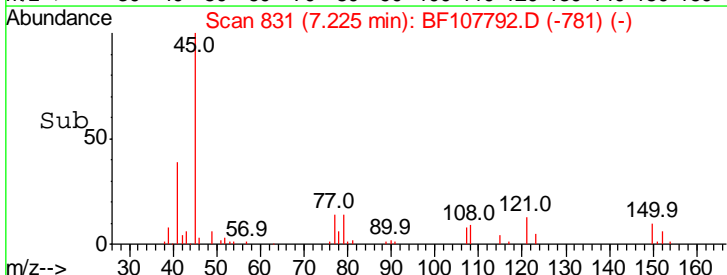
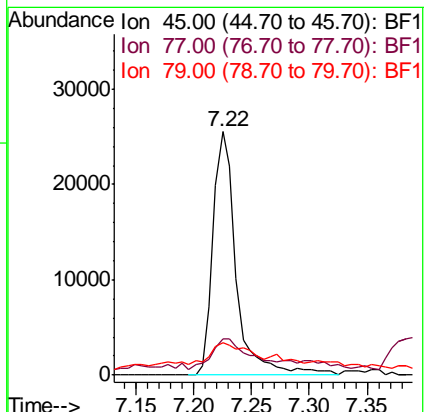
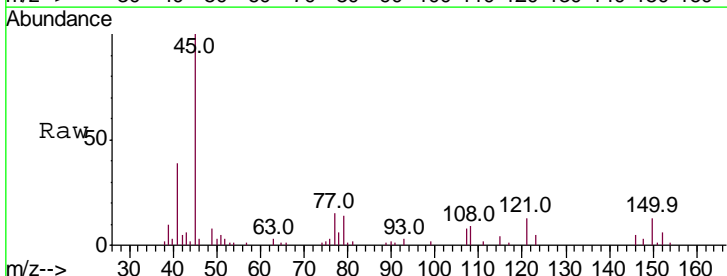
Tgt Ion	Resp	Lower	Upper
146	100		
148	66.7	50.6	75.8
111	41.7	36.0	54.0

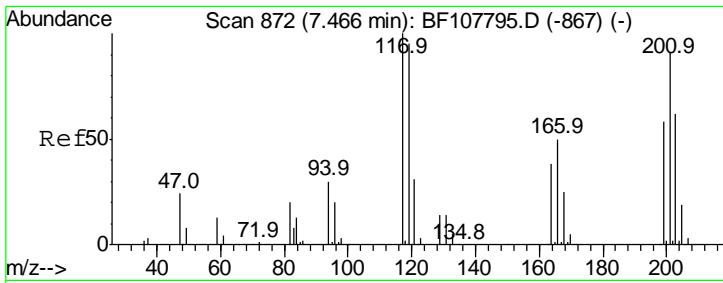
Manual Integrations
APPROVED
 Sohil
 7/31/2018 2:42:07 PM



#16
 2,2'-oxybis(1-Chloropropane)
 Concen: 2.623 ng
 RT: 7.22 min Scan# 831
 Delta R.T. -0.01 min
 Lab File: BF107792.D
 Acq: 30 Jul 2018 11:17

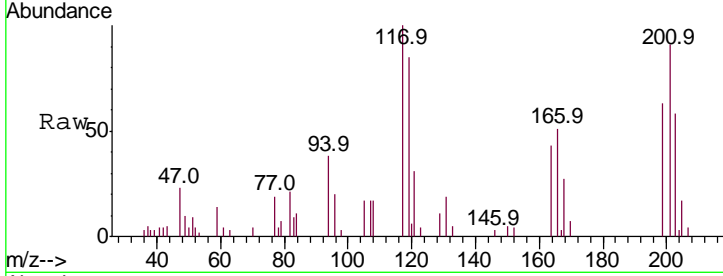
Tgt Ion	Resp	Lower	Upper
45	100		
77	15.1	0.0	32.9
79	13.5	0.0	29.6





#18
 Hexachloroethane
 Concen: 3.262 ng
 RT: 7.47 min Scan# 872
 Delta R.T. 0.00 min
 Lab File: BF107792.D
 Acq: 30 Jul 2018 11:17

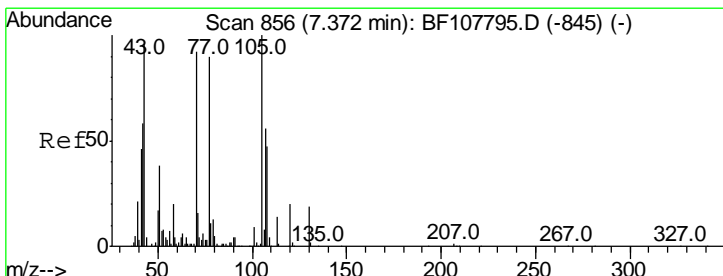
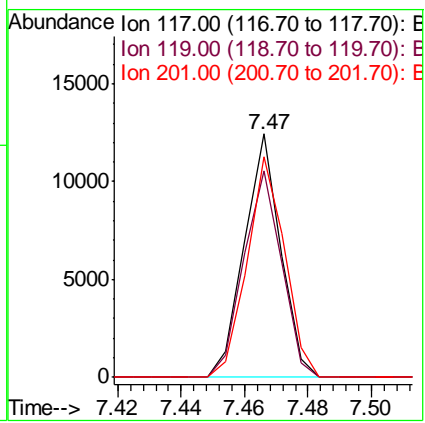
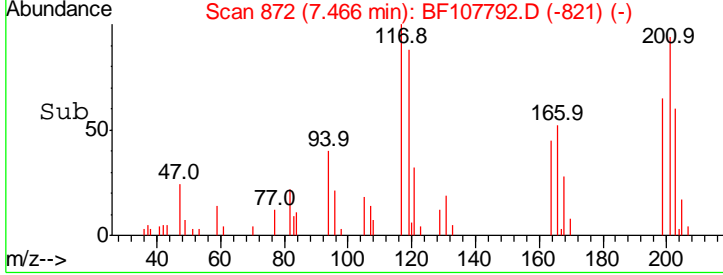
Instrument :
 BNA_F
 ClientSampled :
 SSTDICC2.5



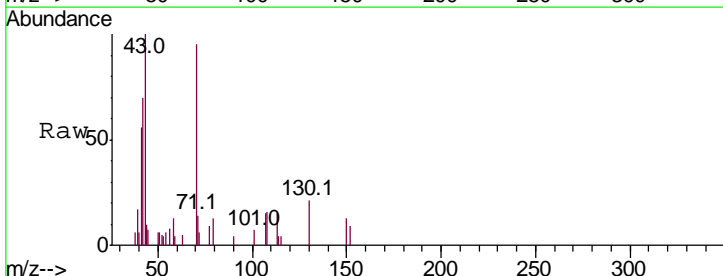
Tgt Ion: 117 Resp: 9852

Ion	Ratio	Lower	Upper
117	100		
119	84.8	75.8	113.8
201	90.7	75.7	113.5

Manual Integrations
APPROVED
 Sohil
 7/31/2018 2:42:07 PM

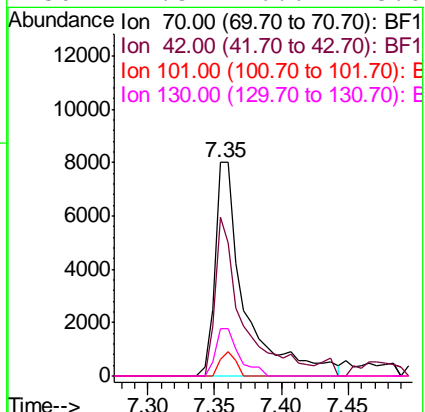
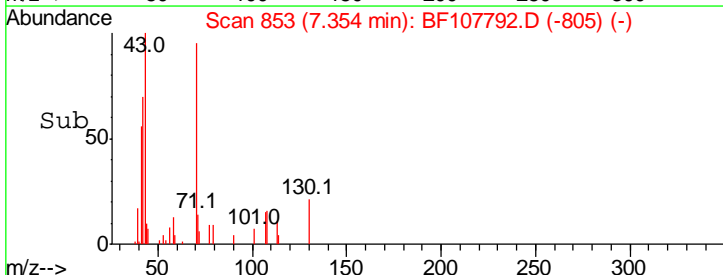


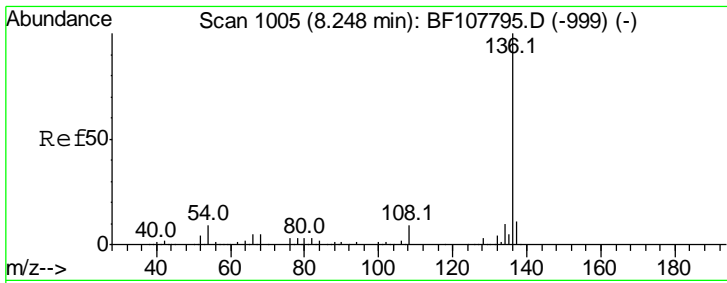
#19
 n-Nitroso-di-n-propylamine
 Concen: 2.337 ng
 RT: 7.35 min Scan# 853
 Delta R.T. -0.02 min
 Lab File: BF107792.D
 Acq: 30 Jul 2018 11:17



Tgt Ion: 70 Resp: 12542

Ion	Ratio	Lower	Upper
70	100		
42	74.4	47.5	71.3#
101	7.9	7.4	11.2
130	22.3	16.6	25.0





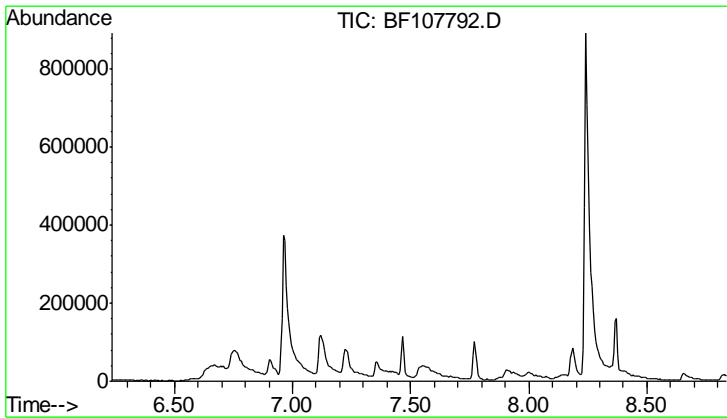
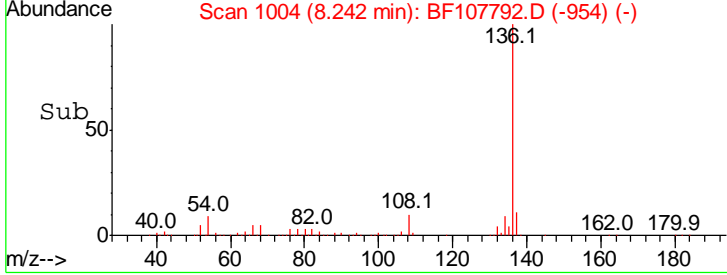
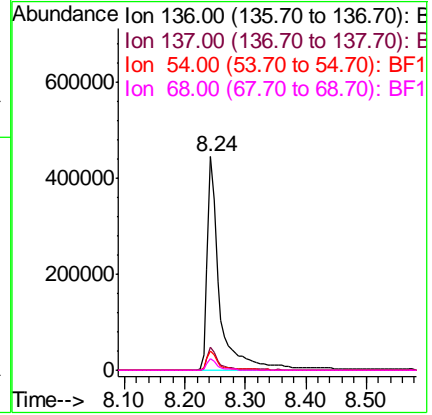
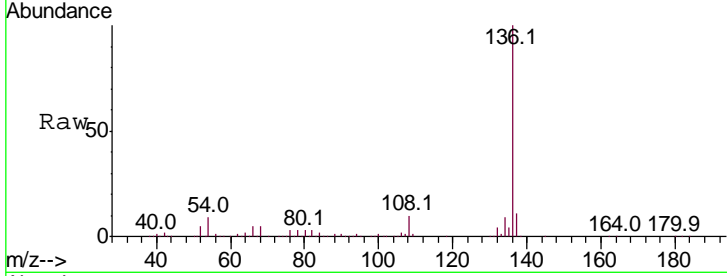
#21
 Naphthalene-d8
 Concen: 20.000 ng
 RT: 8.24 min Scan# 1004
 Delta R.T. -0.01 min
 Lab File: BF107792.D
 Acq: 30 Jul 2018 11:17

Instrument :
 BNA_F
ClientSampled :
 SSTDICC2.5

Tot Ion	Resp	Lower	Upper
136	100		
137	10.6	8.9	13.3
54	9.1	6.6	9.8
68	5.3	5.0	7.4

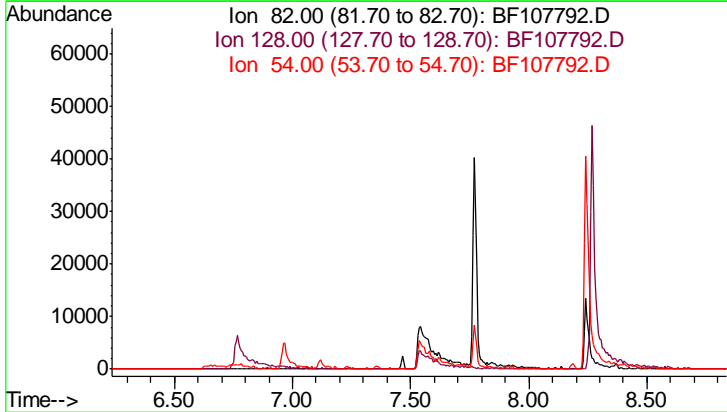
Manual Integrations
APPROVED

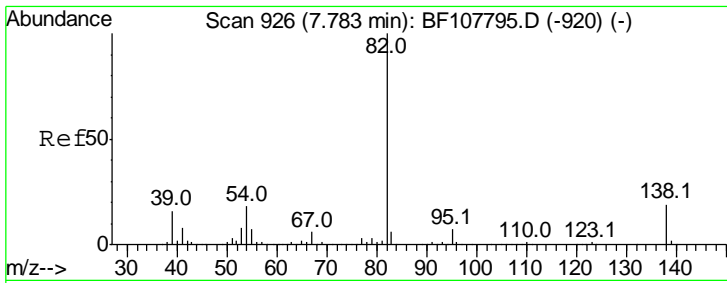
Sohil
 7/31/2018 2:42:07 PM



#23
 Nitrobenzene-d5
 Concen: 0.000 ng
 Expected RT: 7.54 min
 Lab File: BF107792.D
 Acq: 30 Jul 2018 11:17

Tgt Ion	Exp Ratio
82	100
128	45.1
54	51.8



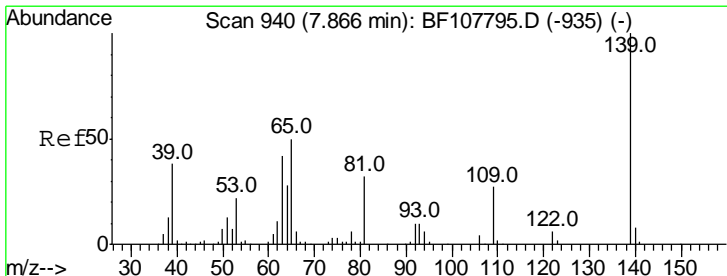
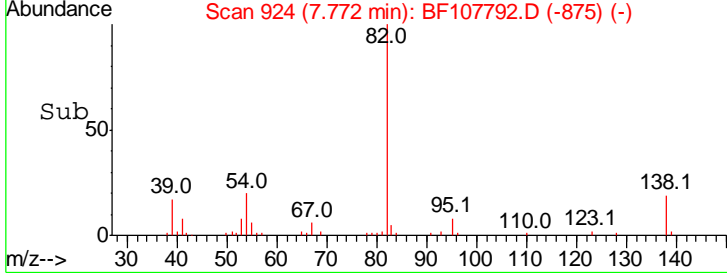
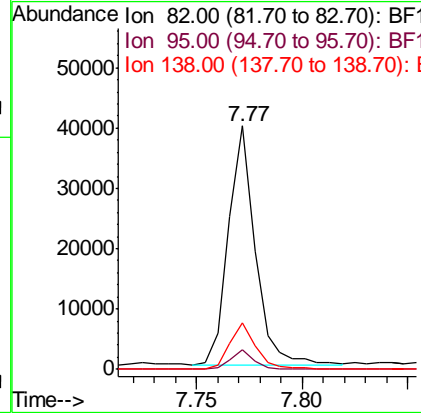
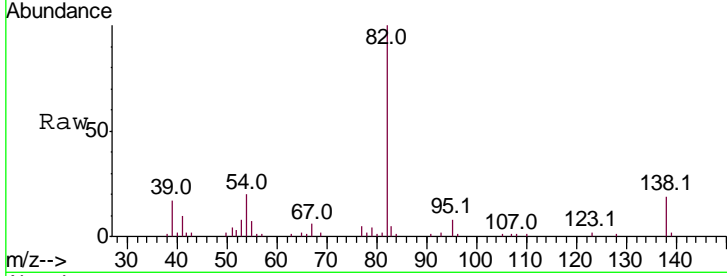


#25
 Isophorone
 Concen: 1.699 ng
 RT: 7.77 min Scan# 924
 Delta R.T. -0.01 min
 Lab File: BF107792.D
 Acq: 30 Jul 2018 11:17

Instrument :
 BNA_F
 ClientSampled :
 SSTDICC2.5

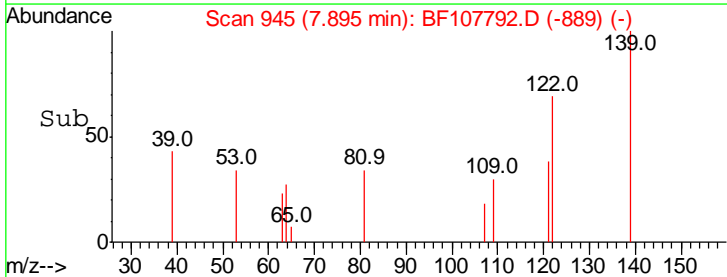
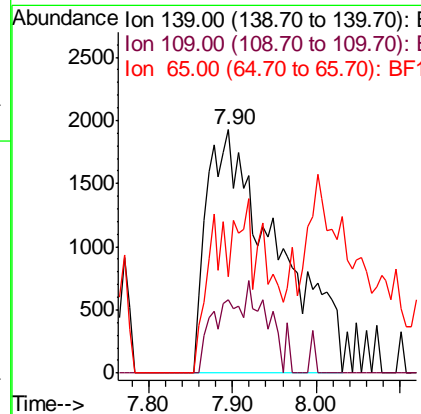
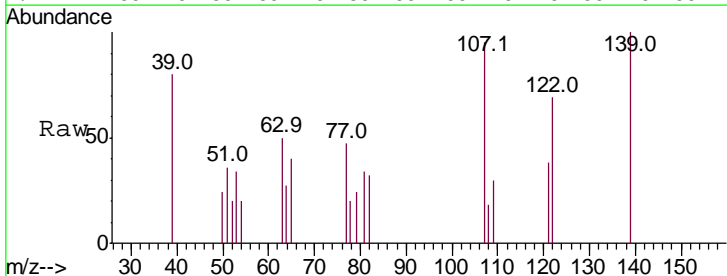
Tgt Ion	Resp	Lower	Upper
82	100		
95	7.9	5.2	7.8#
138	19.0	14.9	22.3

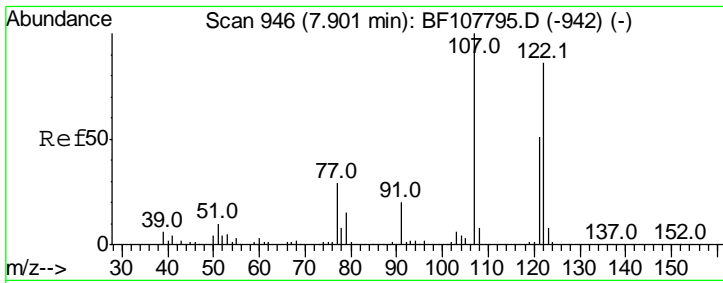
Manual Integrations
APPROVED
 Sohil
 7/31/2018 2:42:07 PM



#26
 2-Nitrophenol
 Concen: 2.399 ng m
 RT: 7.90 min Scan# 945
 Delta R.T. 0.03 min
 Lab File: BF107792.D
 Acq: 30 Jul 2018 11:17

Tgt Ion	Resp	Lower	Upper
139	100		
109	30.0	22.7	34.1
65	39.7	40.5	60.7#



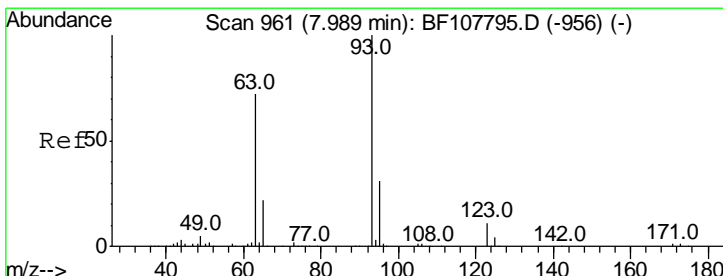
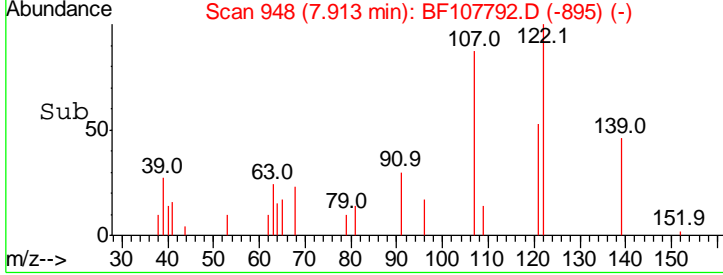
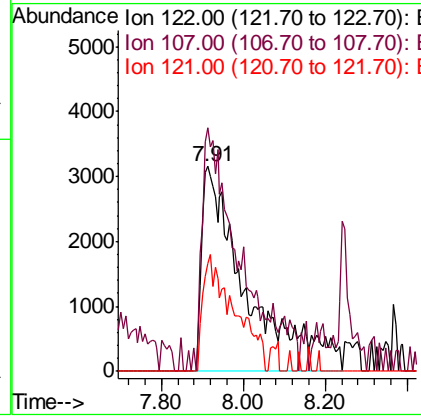
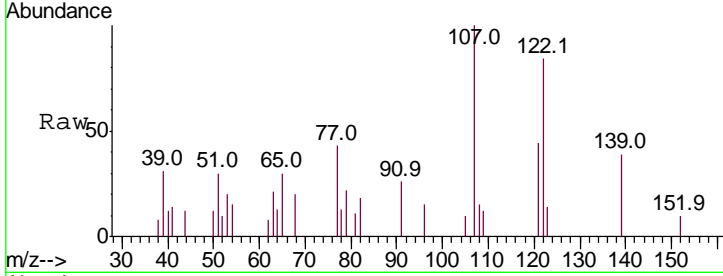


#27
 2,4-Dimethylphenol
 Concen: 2.705 ng m
 RT: 7.91 min Scan# 948
 Delta R.T. 0.01 min
 Lab File: BF107792.D
 Acq: 30 Jul 2018 11:17

Instrument :
 BNA_F
 ClientSampled :
 SSTDICC2.5

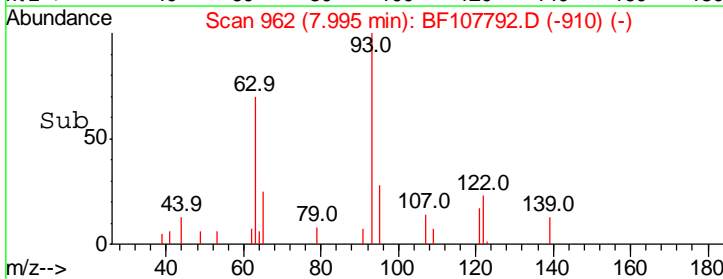
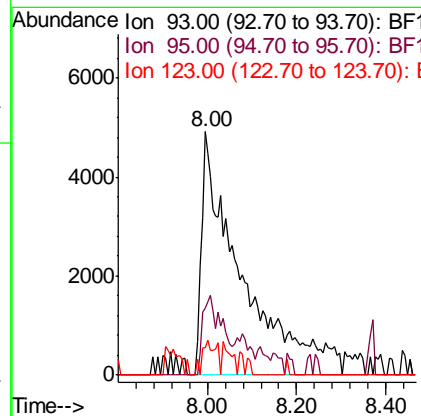
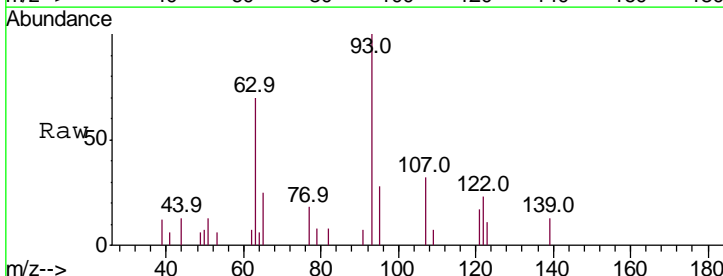
Tgt Ion	Resp	Lower	Upper
122	23862		
107	118.9	91.2	136.8
121	52.8	47.2	70.8

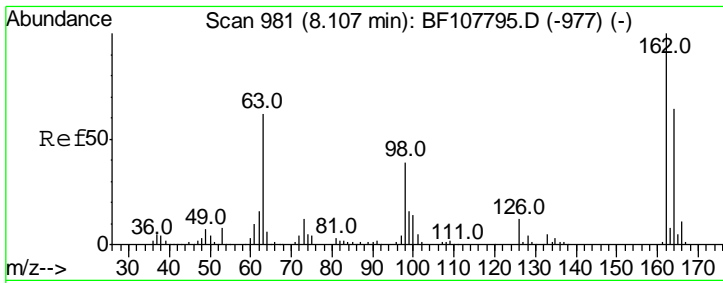
Manual Integrations
APPROVED
 Sohil
 7/31/2018 2:42:07 PM



#28
 bis(2-Chloroethoxy)methane
 Concen: 2.186 ng m
 RT: 8.00 min Scan# 962
 Delta R.T. 0.01 min
 Lab File: BF107792.D
 Acq: 30 Jul 2018 11:17

Tgt Ion	Resp	Lower	Upper
93	30060		
95	27.5	26.3	39.5
123	11.5	9.8	14.6





#29
 2,4-Dichlorophenol
 Concen: 2.218 ng m
 RT: 8.16 min Scan# 990
 Delta R.T. 0.05 min
 Lab File: BF107792.D
 Acq: 30 Jul 2018 11:17

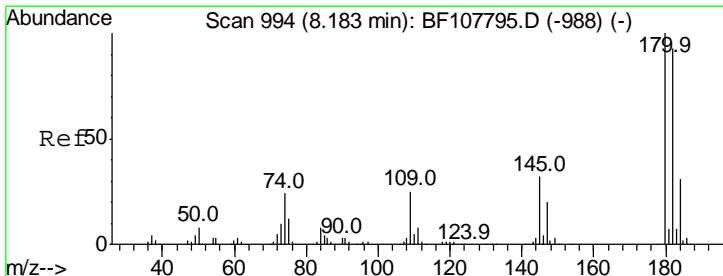
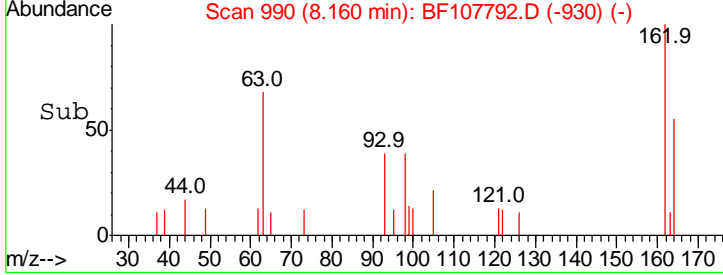
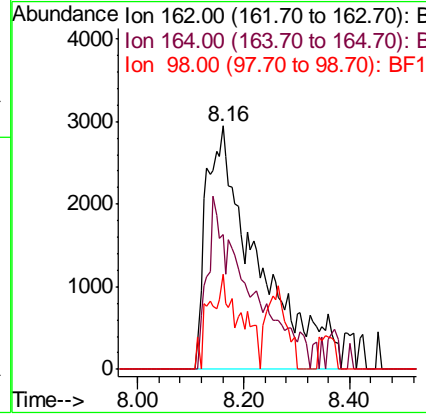
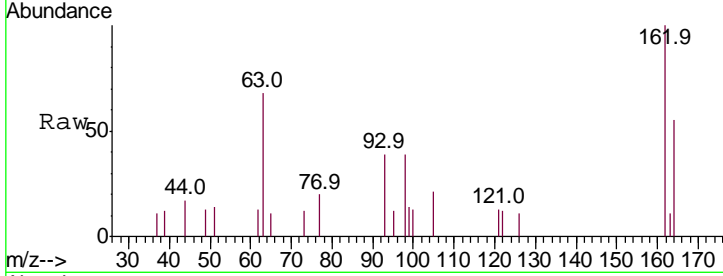
Instrument :
 BNA_F
ClientSampled :
 SSTDICC2.5

Tgt Ion:162 Resp: 20002

Ion	Ratio	Lower	Upper
162	100		
164	55.2	42.7	82.7
98	39.2	18.1	58.1

Manual Integrations
APPROVED

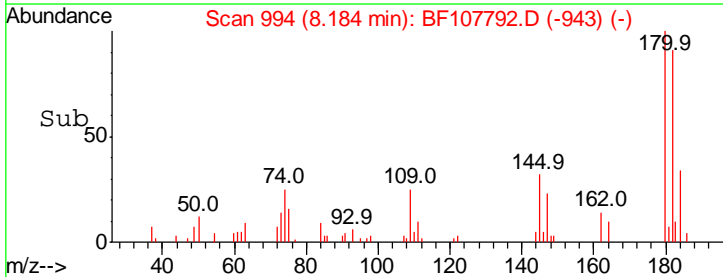
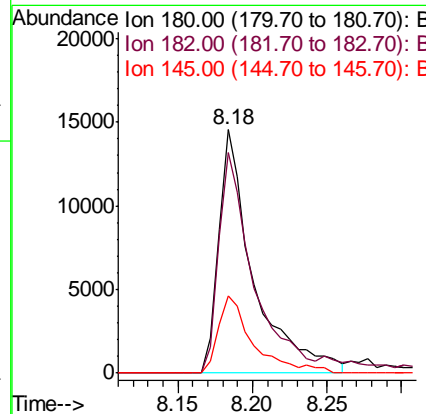
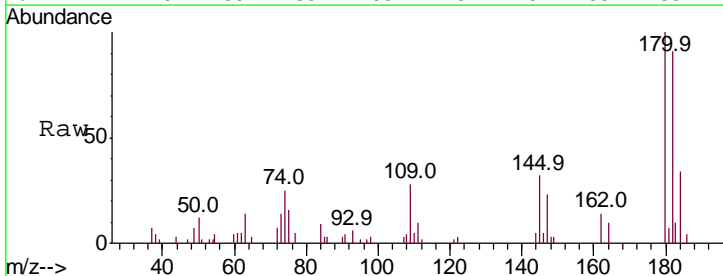
Sohil
 7/31/2018 2:42:07 PM

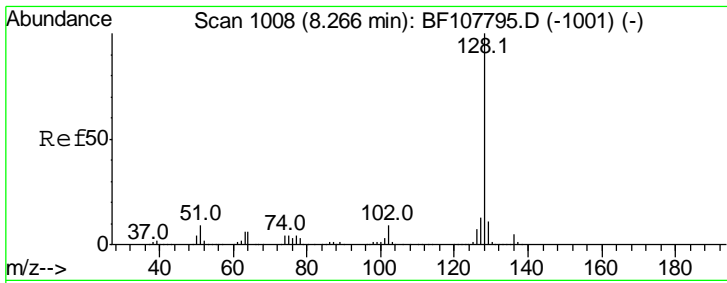


#30
 1,2,4-Trichlorobenzene
 Concen: 2.342 ng
 RT: 8.18 min Scan# 994
 Delta R.T. 0.00 min
 Lab File: BF107792.D
 Acq: 30 Jul 2018 11:17

Tgt Ion:180 Resp: 23721

Ion	Ratio	Lower	Upper
180	100		
182	90.8	76.8	115.2
145	31.7	26.5	39.7





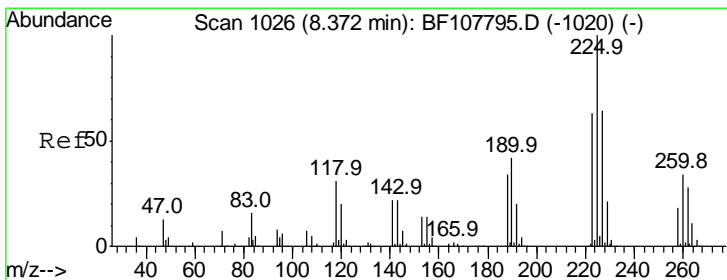
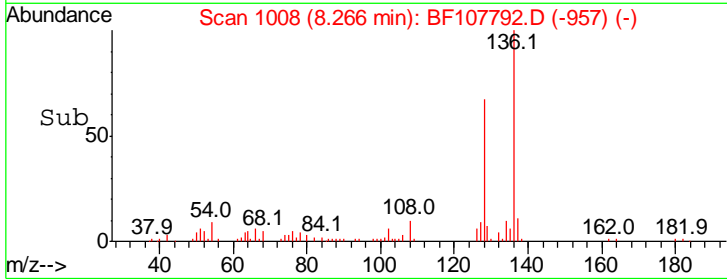
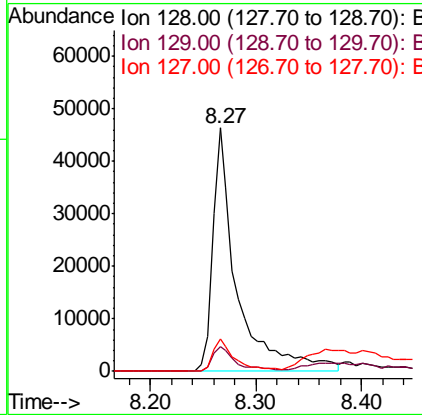
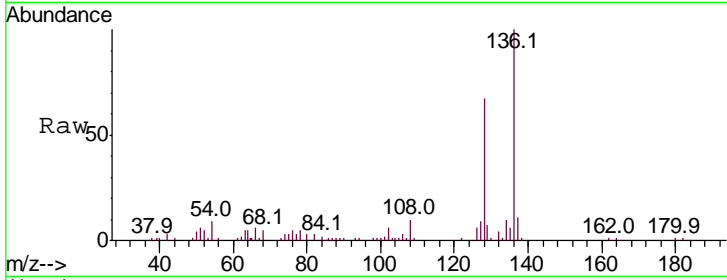
#31
 Naphthalene
 Concen: 2.604 ng
 RT: 8.27 min Scan# 1008
 Delta R.T. 0.00 min
 Lab File: BF107792.D
 Acq: 30 Jul 2018 11:17

Instrument :
 BNA_F
 ClientSampled :
 SSTDICC2.5

Tgt Ion	Resp	Lower	Upper
128	100		
129	10.1	8.8	13.2
127	13.4	10.9	16.3

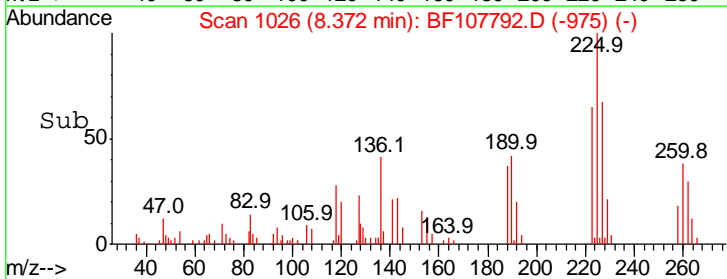
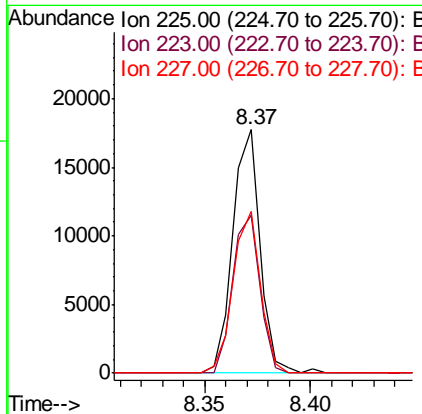
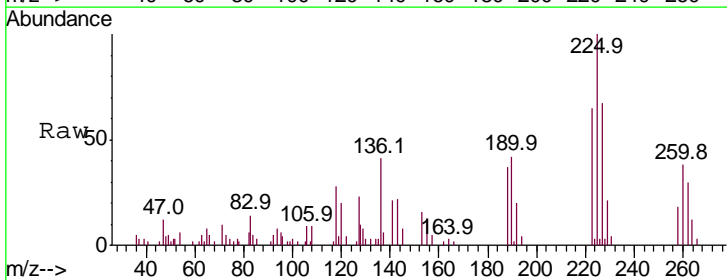
Manual Integrations
 APPROVED

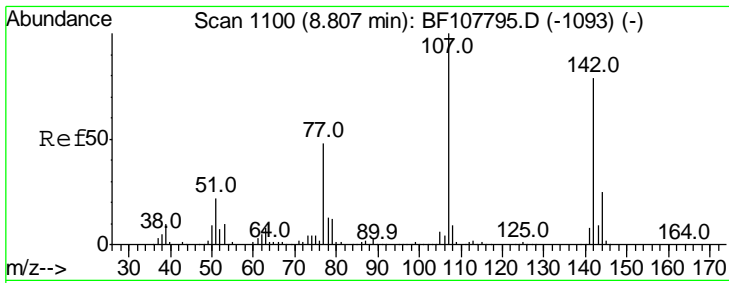
Sohil
 7/31/2018 2:42:07 PM



#34
 Hexachlorobutadiene
 Concen: 2.626 ng
 RT: 8.37 min Scan# 1026
 Delta R.T. 0.00 min
 Lab File: BF107792.D
 Acq: 30 Jul 2018 11:17

Tgt Ion	Resp	Lower	Upper
225	100		
223	64.8	50.6	76.0
227	66.5	51.9	77.9





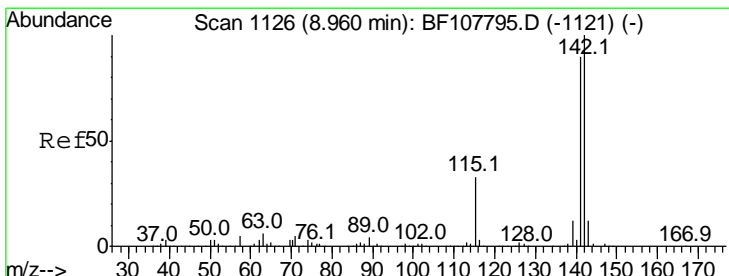
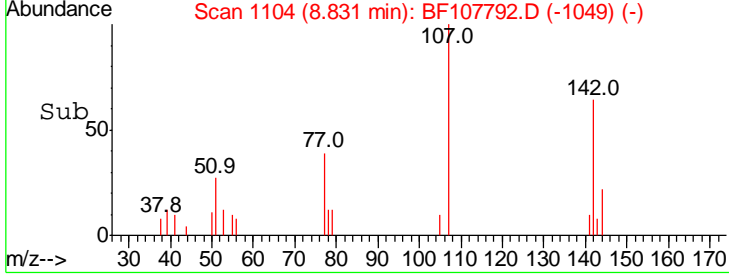
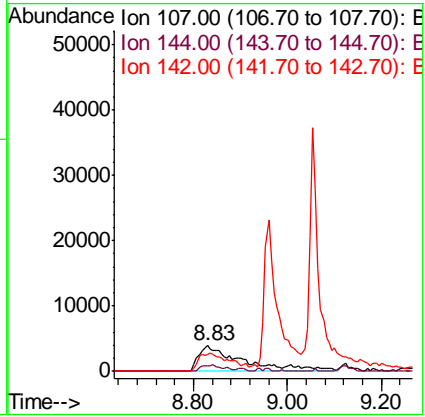
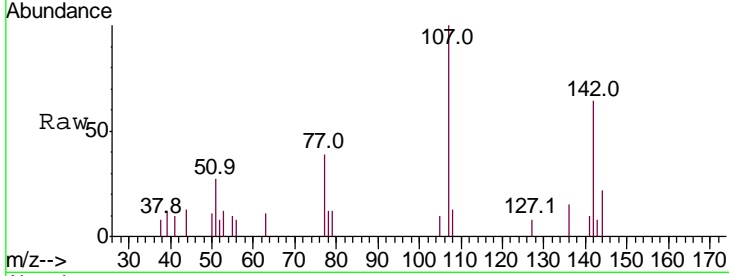
#36
 4-Chloro-3-methylphenol
 Concen: 2.580 ng m
 RT: 8.83 min Scan# 1104
 Delta R.T. 0.02 min
 Lab File: BF107792.D
 Acq: 30 Jul 2018 11:17

Instrument :
 BNA_F
ClientSampled :
 SSTDICC2.5

Tgt Ion	Resp	Lower	Upper
107	100		
144	21.8	20.5	30.7
142	64.4	62.0	93.0

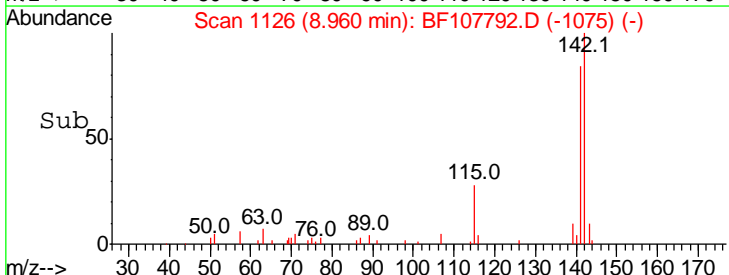
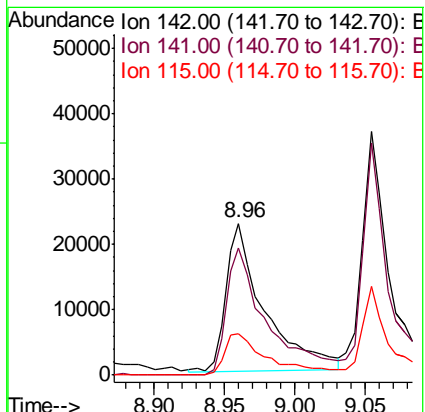
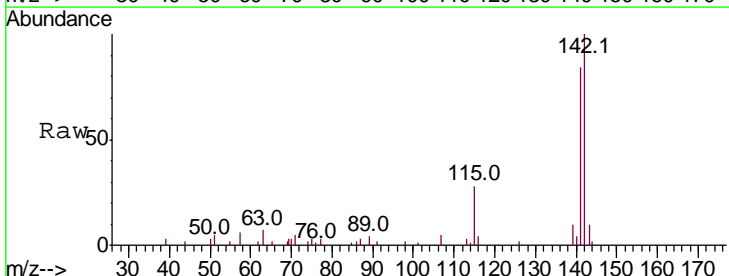
Manual Integrations
APPROVED

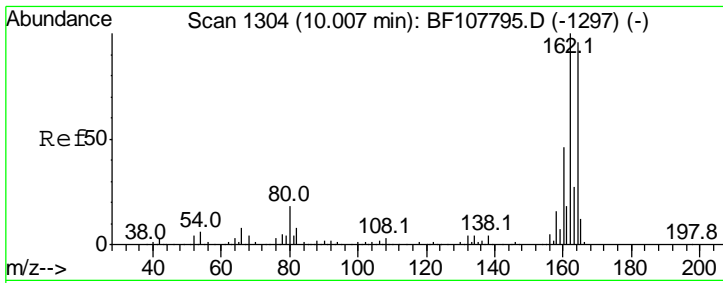
Sohil
 7/31/2018 2:42:07 PM



#37
 2-Methylnaphthalene
 Concen: 2.137 ng
 RT: 8.96 min Scan# 1126
 Delta R.T. 0.00 min
 Lab File: BF107792.D
 Acq: 30 Jul 2018 11:17

Tgt Ion	Resp	Lower	Upper
142	100		
141	84.1	70.8	106.2
115	27.5	26.1	39.1



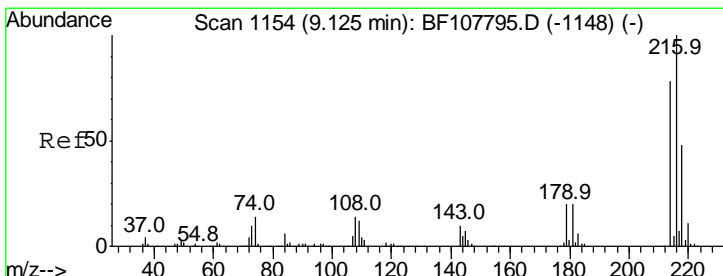
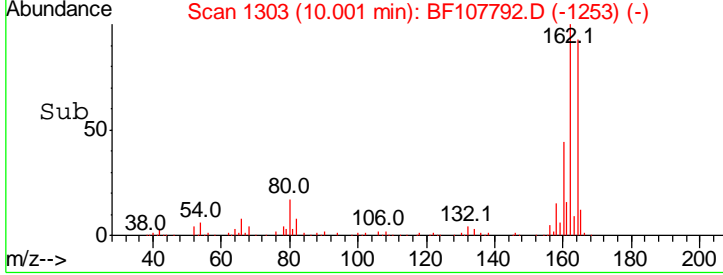
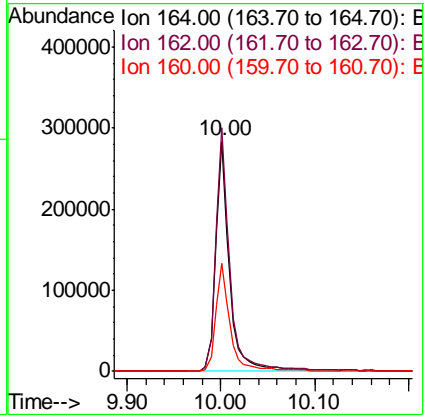
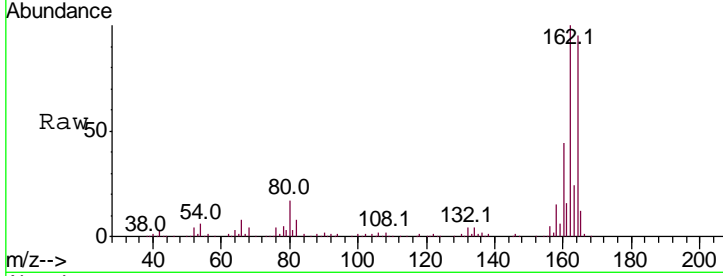


#38
 Acenaphthene-d10
 Concen: 20.000 ng
 RT: 10.00 min Scan# 1303
 Delta R.T. -0.01 min
 Lab File: BF107792.D
 Acq: 30 Jul 2018 11:17

Instrument :
 BNA_F
ClientSampled :
 SSTDICC2.5

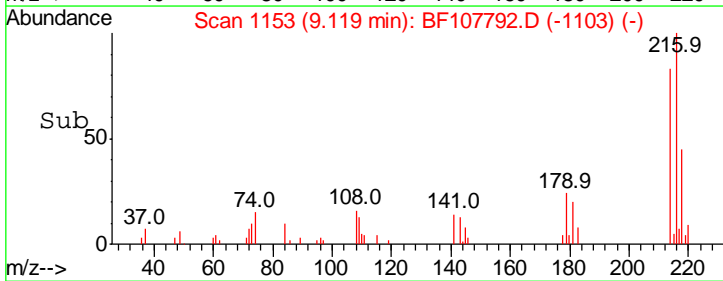
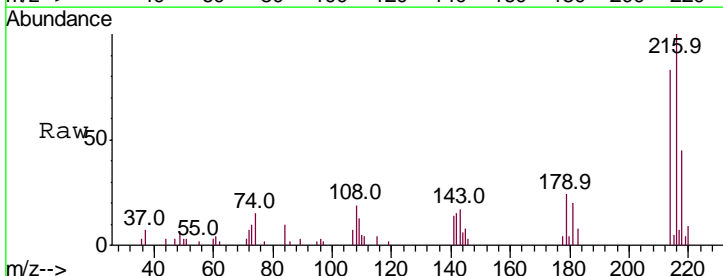
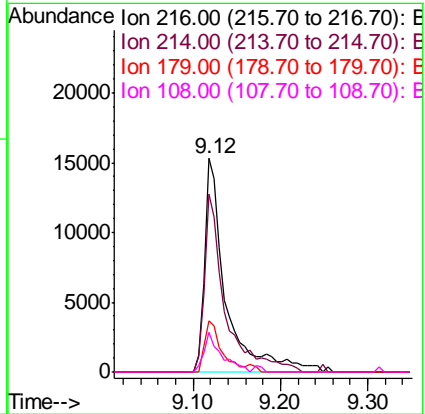
Tgt Ion	Resp	Lower	Upper
164	100		
162	105.8	86.1	129.1
160	46.9	38.3	57.5

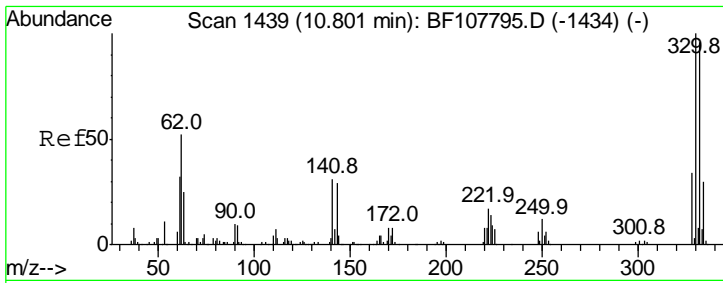
Manual Integrations
APPROVED
 Sohil
 7/31/2018 2:42:07 PM



#39
 1,2,4,5-Tetrachlorobenzene
 Concen: 2.587 ng
 RT: 9.12 min Scan# 1153
 Delta R.T. -0.01 min
 Lab File: BF107792.D
 Acq: 30 Jul 2018 11:17

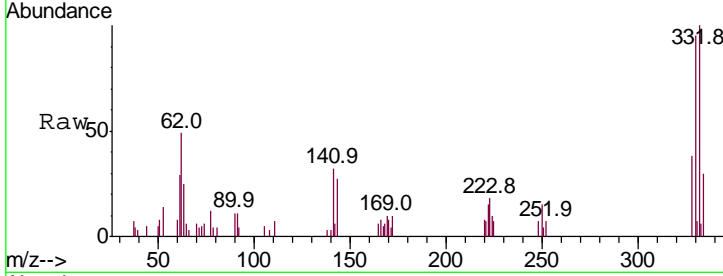
Tgt Ion	Resp	Lower	Upper
216	100		
214	80.0	63.0	94.4
179	20.3	18.1	27.1
108	15.1	17.2	25.8#





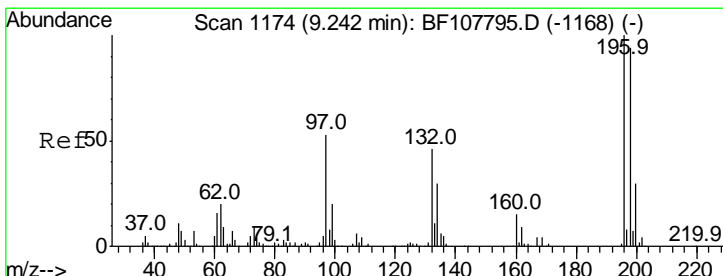
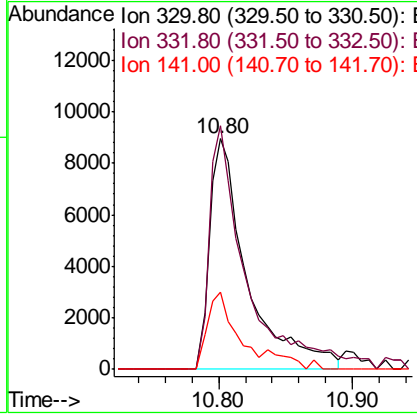
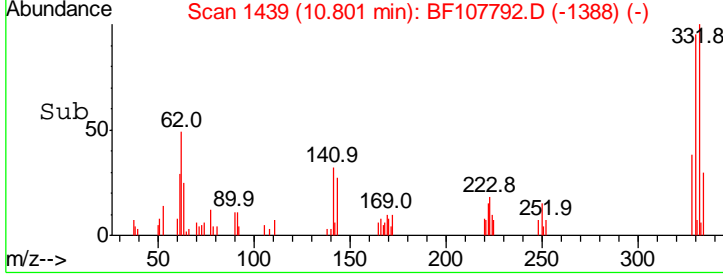
#41
 2,4,6-Tribromophenol
 Concen: 5.199 ng
 RT: 10.80 min Scan# 1439
 Delta R.T. 0.00 min
 Lab File: BF107792.D
 Acq: 30 Jul 2018 11:17

Instrument :
 BNA_F
 ClientSampled :
 SSTDICC2.5

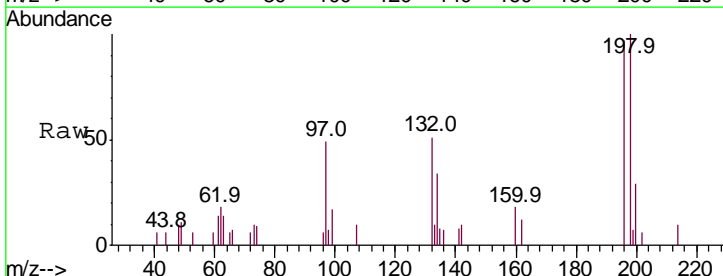


Tgt Ion	Resp	Lower	Upper
330	100		
332	103.4	77.0	115.6
141	30.1	29.9	44.9

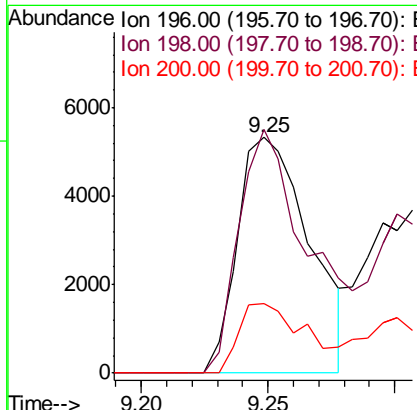
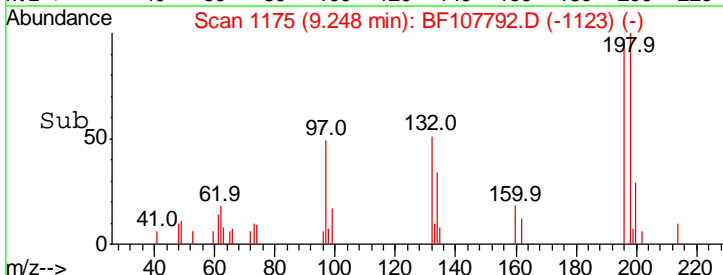
Manual Integrations
APPROVED
 Sohil
 7/31/2018 2:42:07 PM

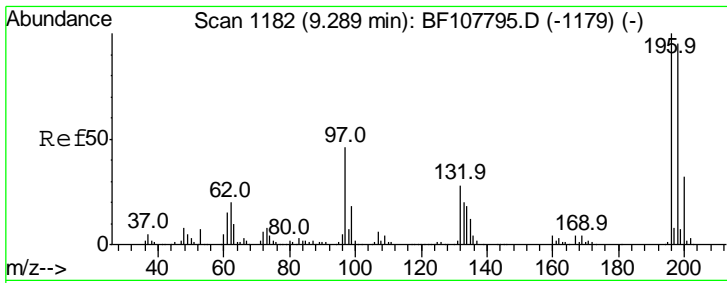


#42
 2,4,6-Trichlorophenol
 Concen: 1.644 ng
 RT: 9.25 min Scan# 1175
 Delta R.T. 0.01 min
 Lab File: BF107792.D
 Acq: 30 Jul 2018 11:17



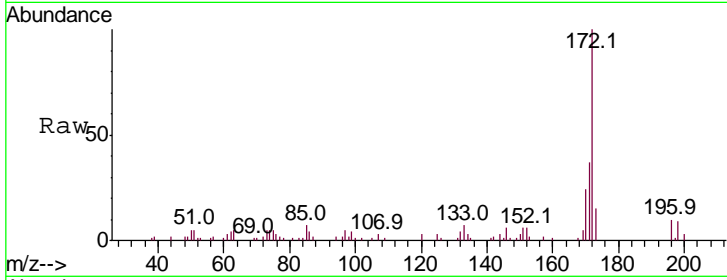
Tgt Ion	Resp	Lower	Upper
196	100		
198	103.4	75.7	113.5
200	29.5	24.5	36.7





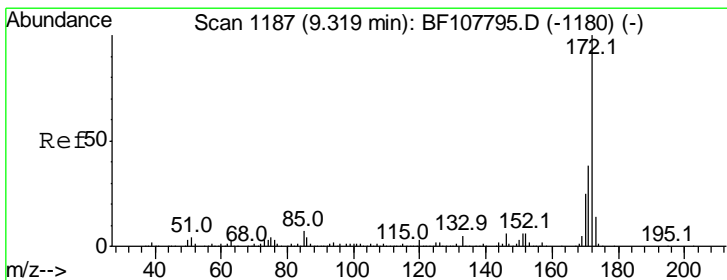
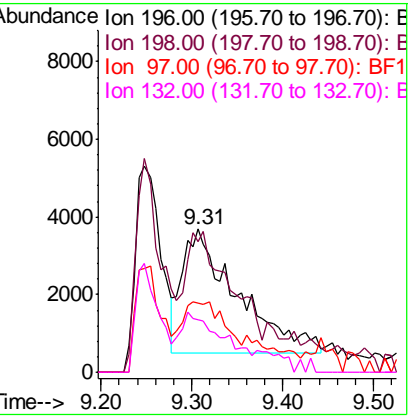
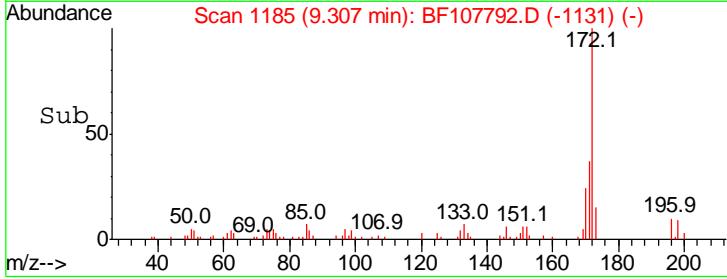
#43
 2,4,5-Trichlorophenol
 Concen: 2.021 ng m
 RT: 9.31 min Scan# 1185
 Delta R.T. 0.02 min
 Lab File: BF107792.D
 Acq: 30 Jul 2018 11:17

Instrument :
 BNA_F
ClientSampled :
 SSTDICC2.5



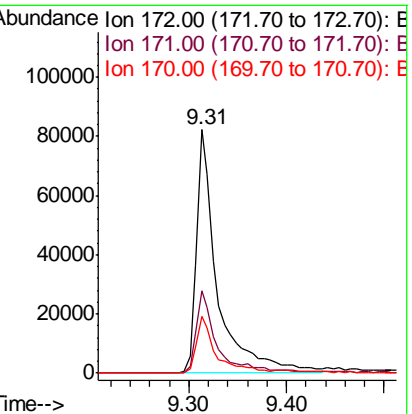
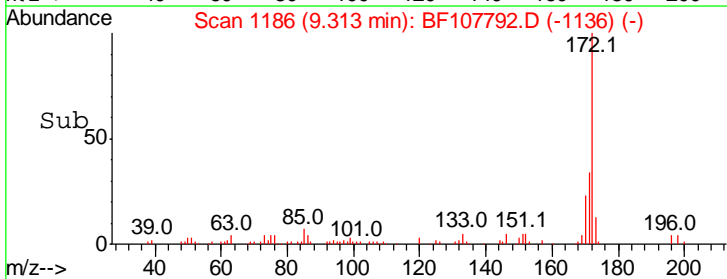
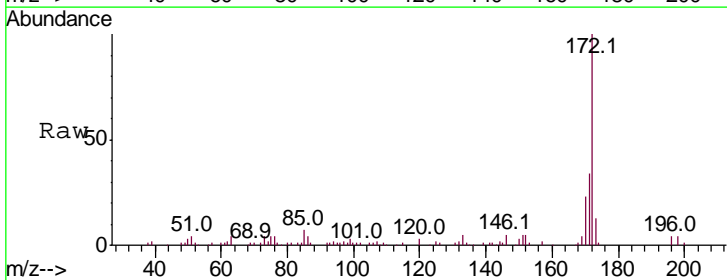
Tgt Ion	Resp	Lower	Upper
196	100		
198	91.7	74.6	112.0
97	48.7	42.9	64.3
132	36.5	26.3	39.5

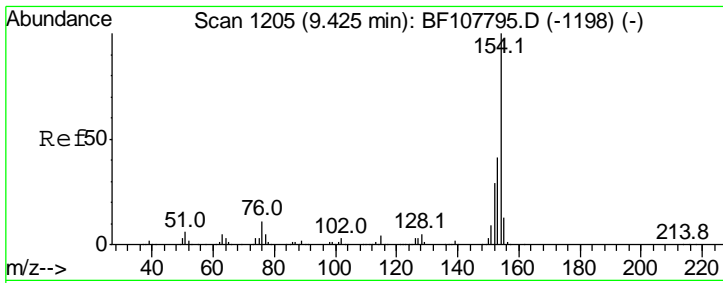
Manual Integrations
APPROVED
 Sohil
 7/31/2018 2:42:07 PM



#44
 2-Fluorobiphenyl
 Concen: 6.240 ng
 RT: 9.31 min Scan# 1186
 Delta R.T. -0.01 min
 Lab File: BF107792.D
 Acq: 30 Jul 2018 11:17

Tgt Ion	Resp	Lower	Upper
172	100		
171	34.0	29.7	44.5
170	23.1	19.6	29.4





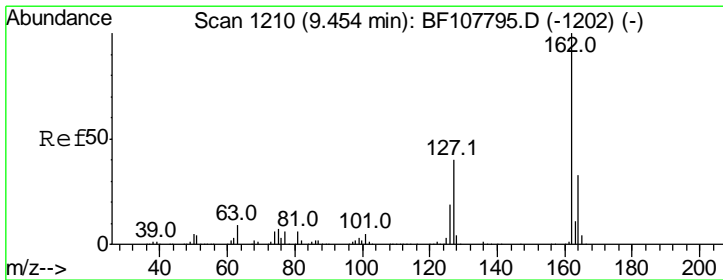
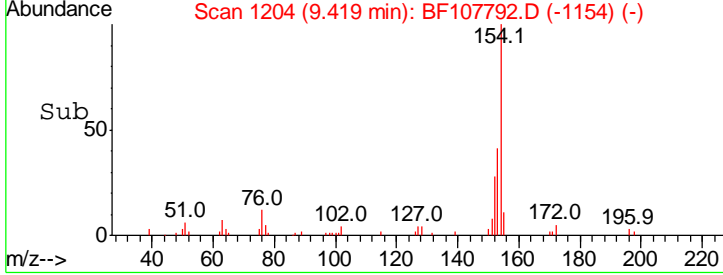
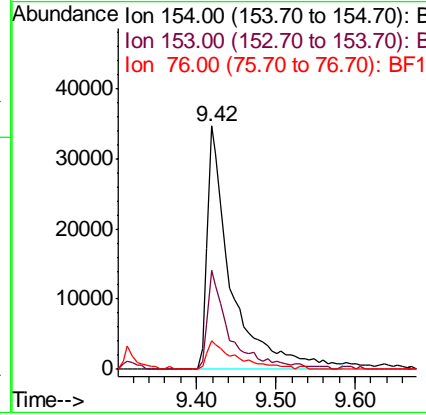
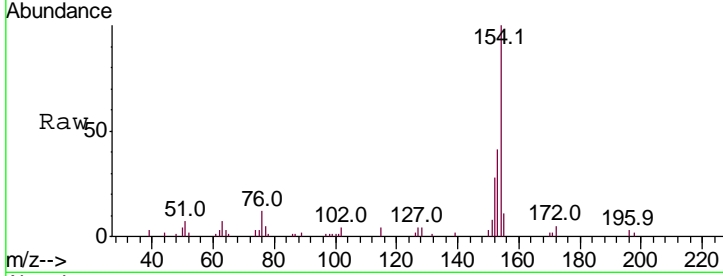
#45
 1,1'-Biphenyl
 Concen: 2.797 ng
 RT: 9.42 min Scan# 1204
 Delta R.T. -0.01 min
 Lab File: BF107792.D
 Acq: 30 Jul 2018 11:17

Instrument :
 BNA_F
ClientSampled :
 SSTDICC2.5

Tgt Ion	Resp	Lower	Upper
154	100		
153	40.5	21.3	61.3
76	11.8	0.0	34.0

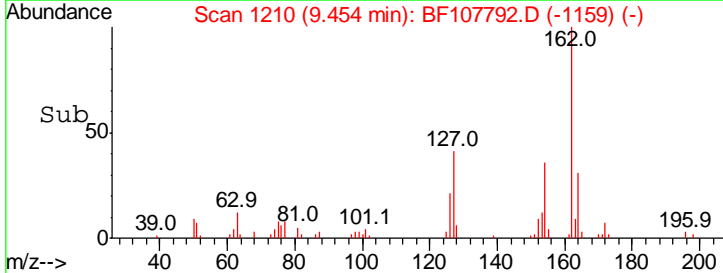
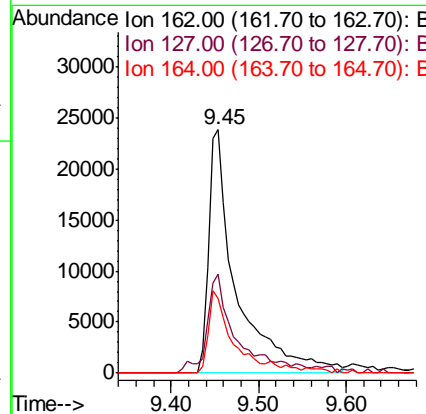
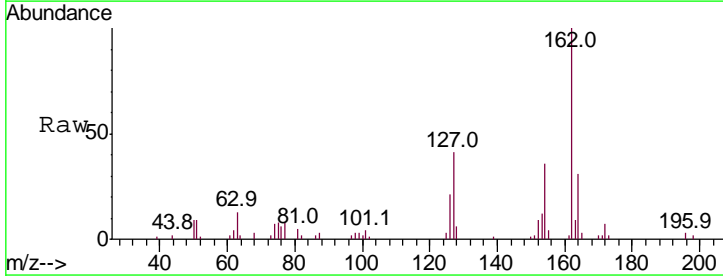
Manual Integrations
APPROVED

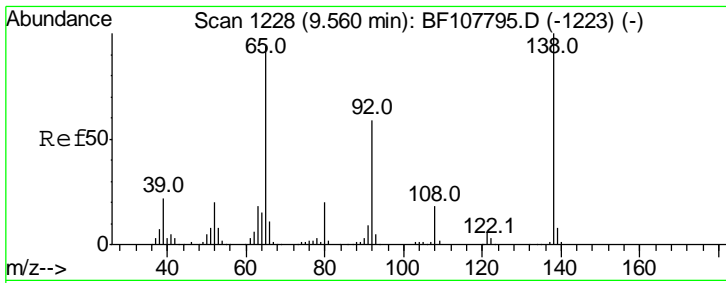
Sohil
 7/31/2018 2:42:07 PM



#46
 2-Chloronaphthalene
 Concen: 2.614 ng
 RT: 9.45 min Scan# 1210
 Delta R.T. 0.00 min
 Lab File: BF107792.D
 Acq: 30 Jul 2018 11:17

Tgt Ion	Resp	Lower	Upper
162	100		
127	40.6	33.9	50.9
164	30.6	26.5	39.7





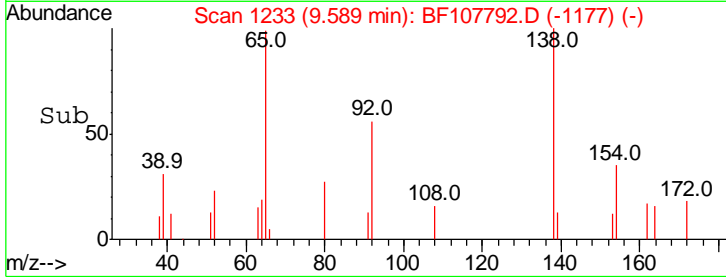
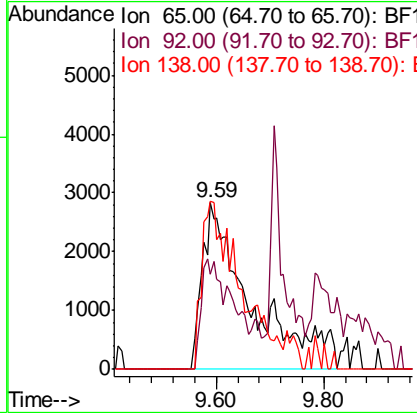
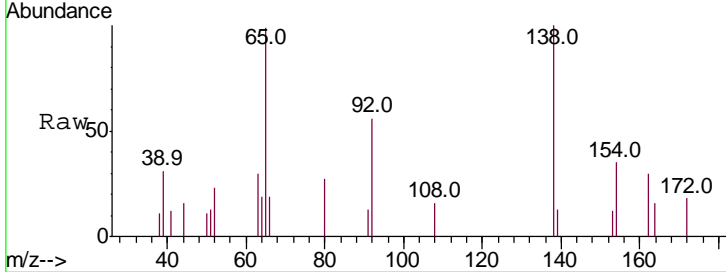
#47
 2-Nitroaniline
 Concen: 3.035 ng m
 RT: 9.59 min Scan# 1233
 Delta R.T. 0.03 min
 Lab File: BF107792.D
 Acq: 30 Jul 2018 11:17

Instrument :
 BNA_F
 ClientSampled :
 SSTDICC2.5

Tgt Ion	Resp	Lower	Upper
65	100		
92	56.9	55.8	83.6
138	101.2	91.2	136.8

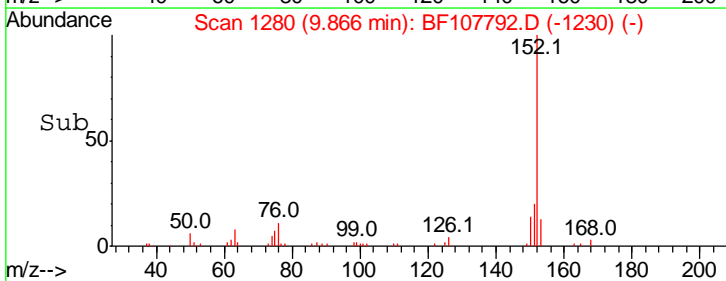
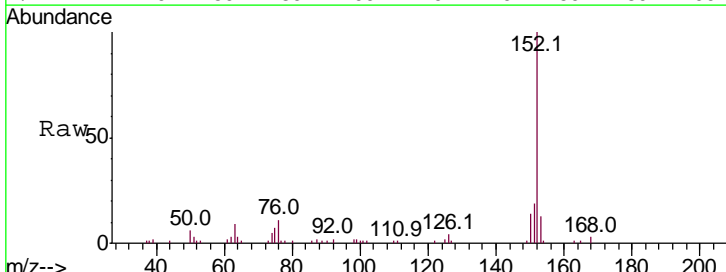
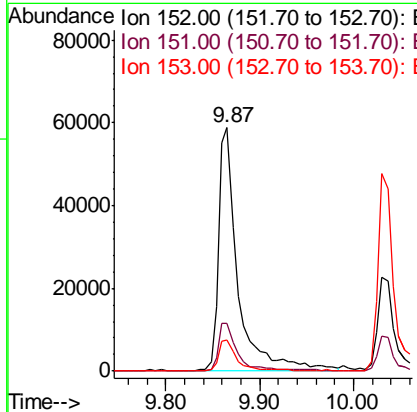
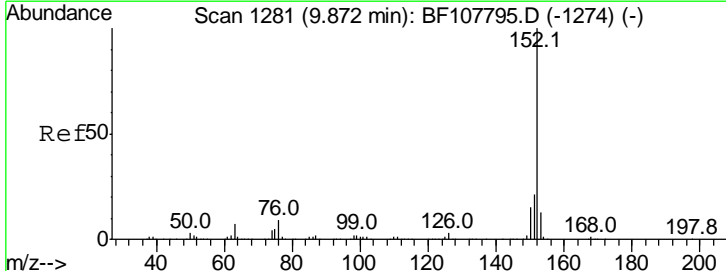
Manual Integrations
 APPROVED

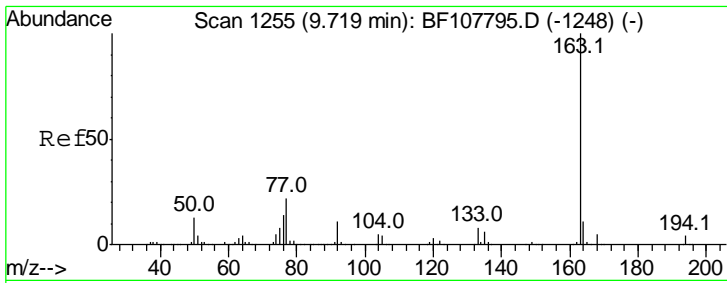
Sohil
 7/31/2018 2:42:07 PM



#48
 Acenaphthylene
 Concen: 2.829 ng
 RT: 9.87 min Scan# 1280
 Delta R.T. -0.01 min
 Lab File: BF107792.D
 Acq: 30 Jul 2018 11:17

Tgt Ion	Resp	Lower	Upper
152	100		
151	19.4	16.3	24.5
153	12.6	10.7	16.1





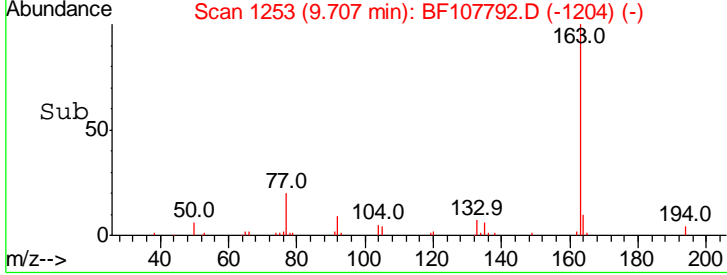
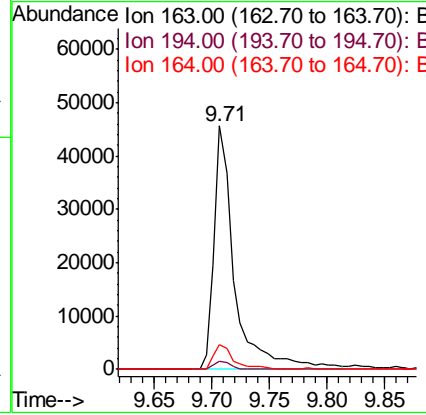
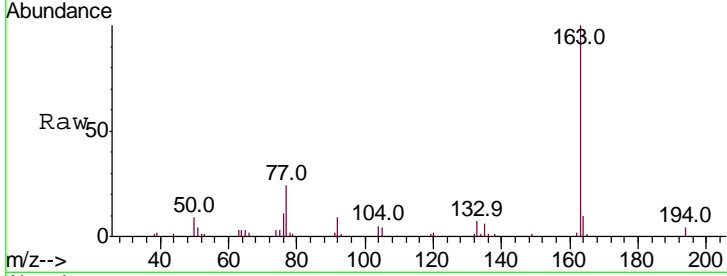
#49
 Dimethylphthalate
 Concen: 2.503 ng
 RT: 9.71 min Scan# 1253
 Delta R.T. -0.01 min
 Lab File: BF107792.D
 Acq: 30 Jul 2018 11:17

Instrument :
 BNA_F
ClientSampled :
 SSTDICC2.5

Tgt Ion	Resp	Lower	Upper
163	100		
194	3.6	2.7	4.1
164	9.9	8.2	12.2

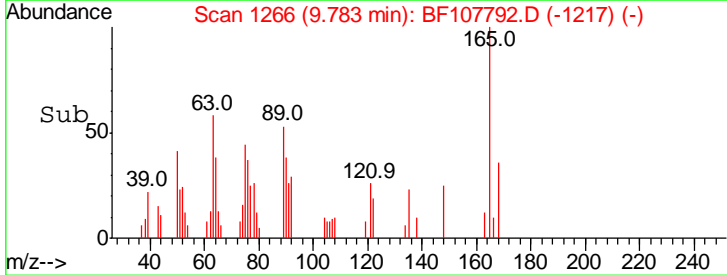
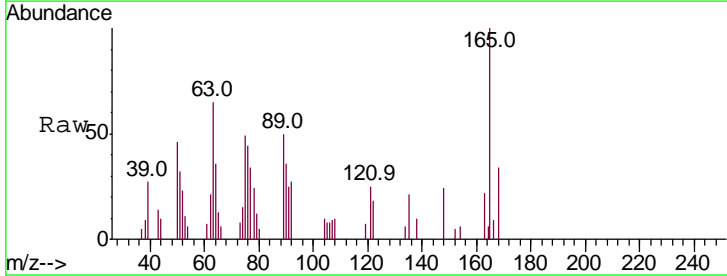
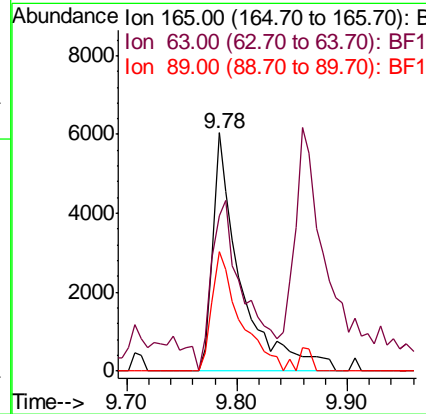
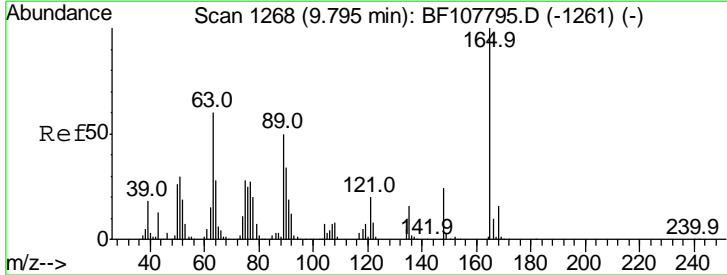
Manual Integrations
APPROVED

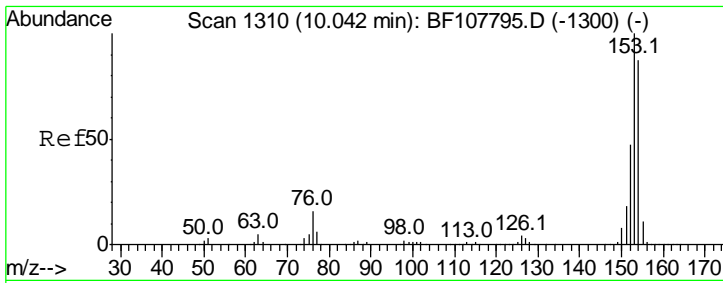
Sohil
 7/31/2018 2:42:07 PM



#50
 2,6-Dinitrotoluene
 Concen: 2.314 ng
 RT: 9.78 min Scan# 1266
 Delta R.T. -0.01 min
 Lab File: BF107792.D
 Acq: 30 Jul 2018 11:17

Tgt Ion	Resp	Lower	Upper
165	100		
63	65.4	44.7	67.1
89	50.0	44.0	66.0



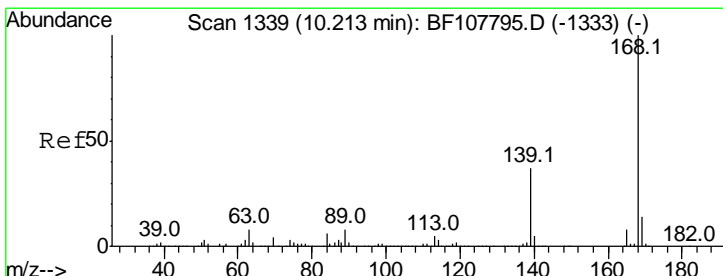
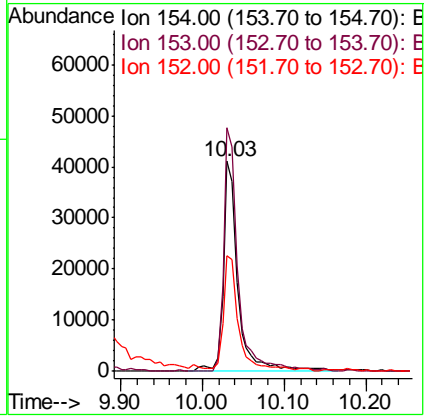
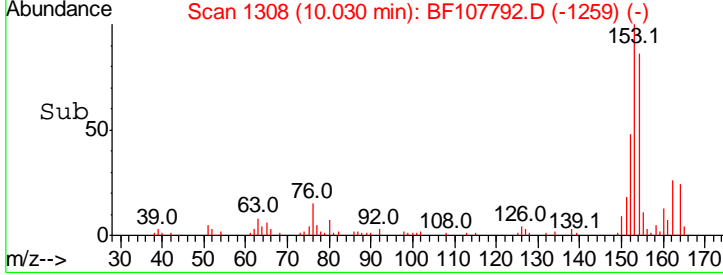
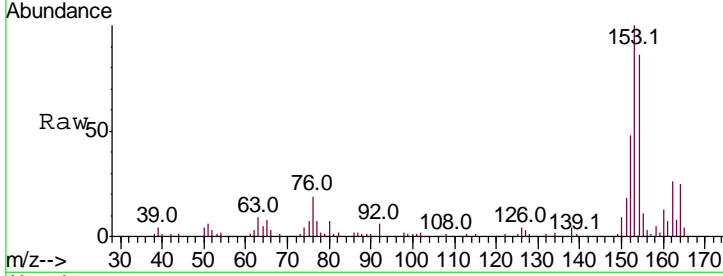


#51
 Acenaphthene
 Concen: 2.744 ng
 RT: 10.03 min Scan# 1308
 Delta R.T. -0.01 min
 Lab File: BF107792.D
 Acq: 30 Jul 2018 11:17

Instrument :
 BNA_F
 ClientSampled :
 SSTDICC2.5

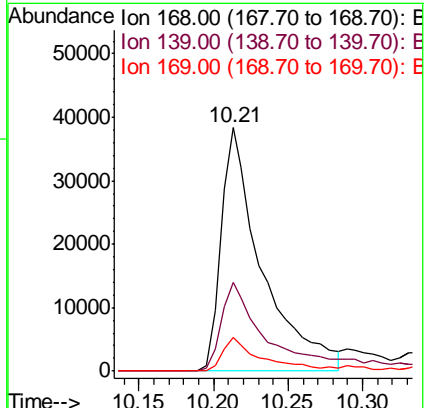
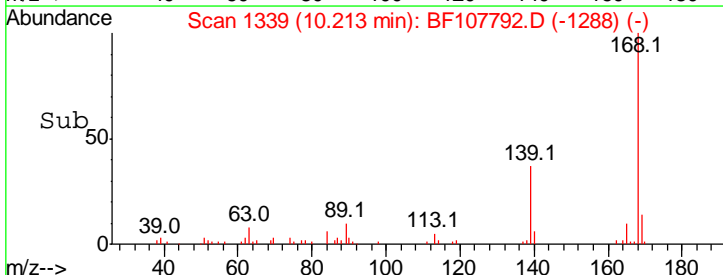
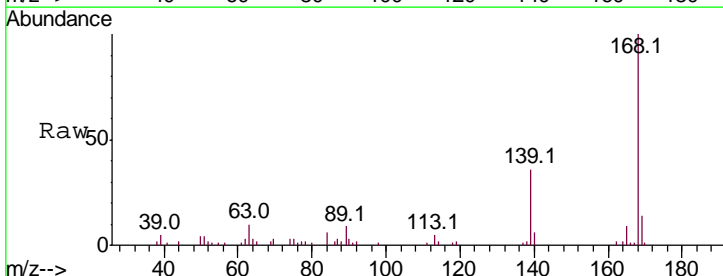
Tgt Ion	Resp	Lower	Upper
154	100		
153	115.9	91.2	136.8
152	55.3	43.8	65.8

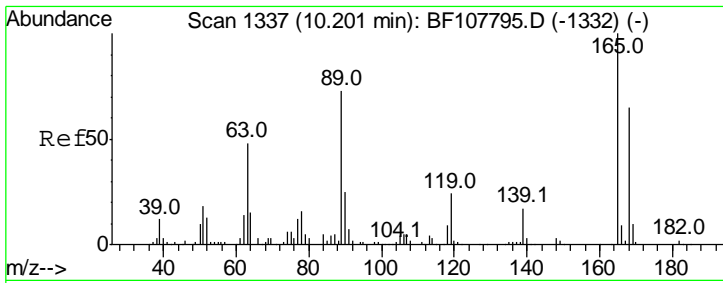
Manual Integrations
 APPROVED
 Sohil
 7/31/2018 2:42:07 PM



#54
 Dibenzofuran
 Concen: 2.651 ng
 RT: 10.21 min Scan# 1339
 Delta R.T. 0.00 min
 Lab File: BF107792.D
 Acq: 30 Jul 2018 11:17

Tgt Ion	Resp	Lower	Upper
168	100		
139	36.4	30.1	45.1
169	13.6	10.9	16.3





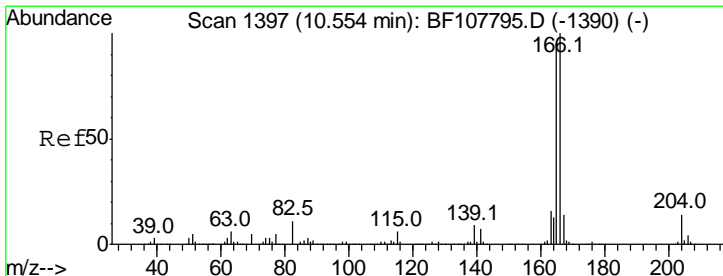
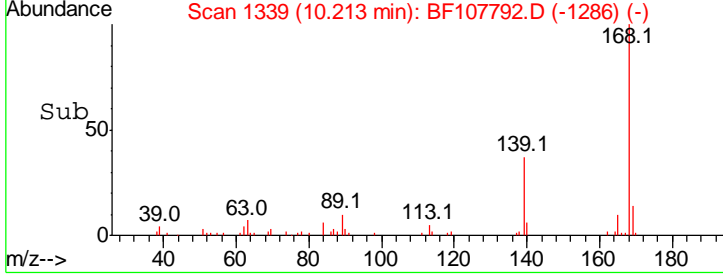
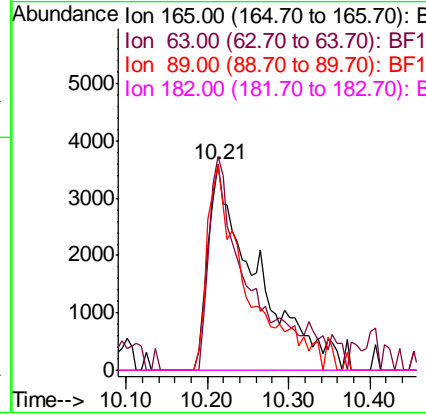
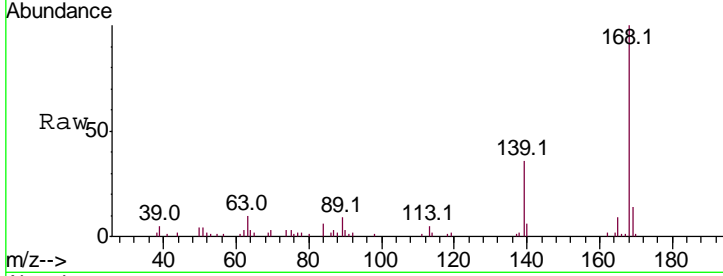
#56
 2,4-Dinitrotoluene
 Concen: 2.724 ng m
 RT: 10.21 min Scan# 1339
 Delta R.T. 0.01 min
 Lab File: BF107792.D
 Acq: 30 Jul 2018 11:17

Instrument :
 BNA_F
 ClientSampled :
 SSTDICC2.5

Tgt Ion	Resp	Lower	Upper
165	14752		
63	103.8	36.4	54.6#
89	99.9	57.8	86.6#
182	0.0	1.6	2.4#

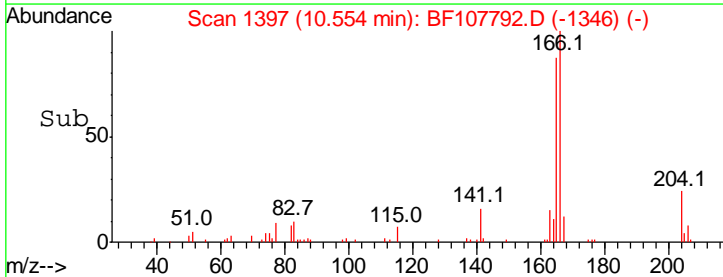
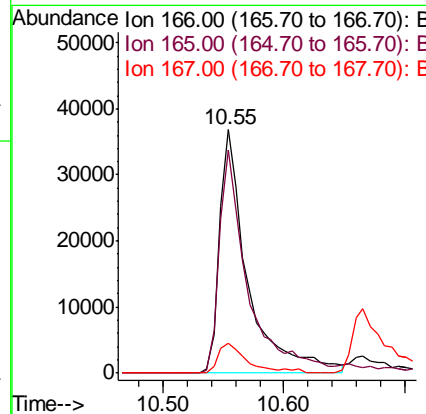
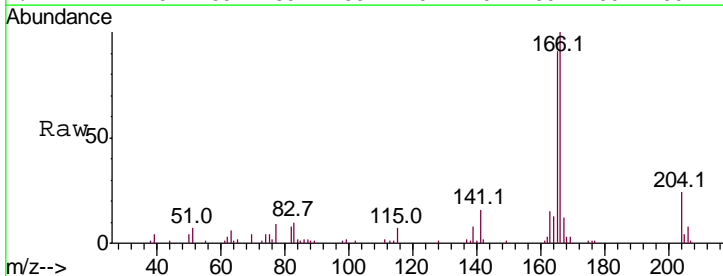
Manual Integrations
 APPROVED

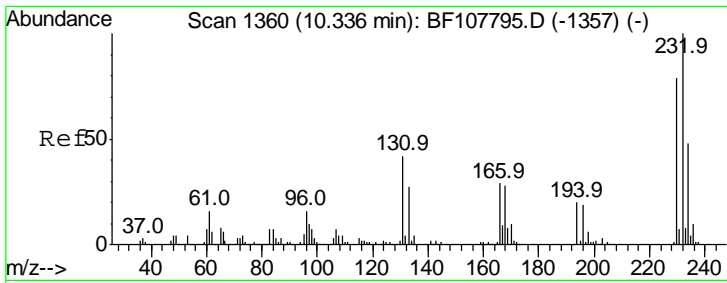
Sohil
 7/31/2018 2:42:07 PM



#57
 Fluorene
 Concen: 3.002 ng
 RT: 10.55 min Scan# 1397
 Delta R.T. 0.00 min
 Lab File: BF107792.D
 Acq: 30 Jul 2018 11:17

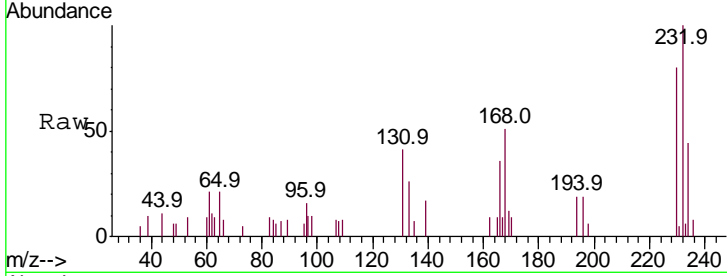
Tgt Ion	Resp	Lower	Upper
166	59255		
165	91.4	79.8	119.8
167	12.4	10.6	16.0





#58
 2,3,4,6-Tetrachlorophenol
 Concen: 2.519 ng
 RT: 10.34 min Scan# 1360
 Delta R.T. 0.00 min
 Lab File: BF107792.D
 Acq: 30 Jul 2018 11:17

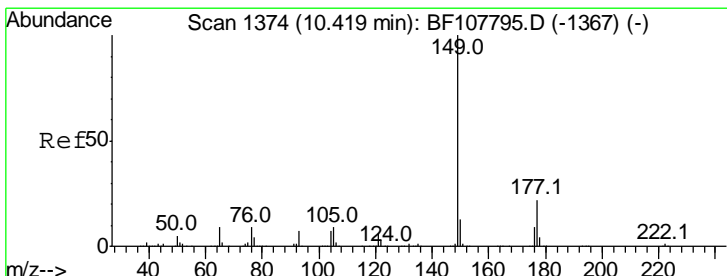
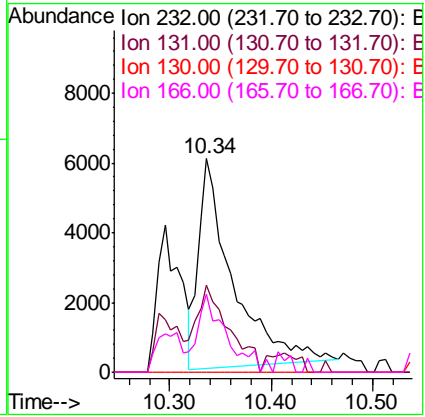
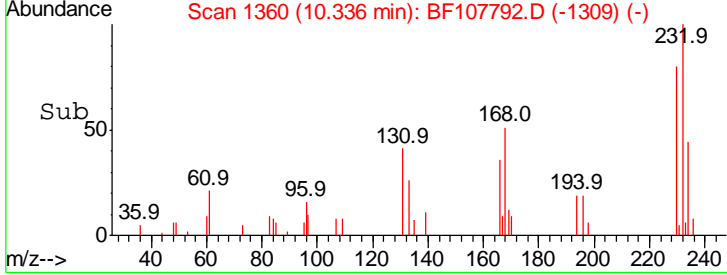
Instrument :
 BNA_F
 ClientSampled :
 SSTDICC2.5



Tgt Ion: 232 Resp: 14026

Ion	Ratio	Lower	Upper
232	100		
131	40.6	43.8	65.8#
130	0.0	2.1	3.1#
166	31.5	27.8	41.6

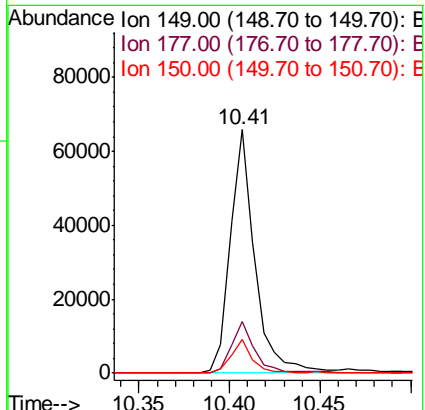
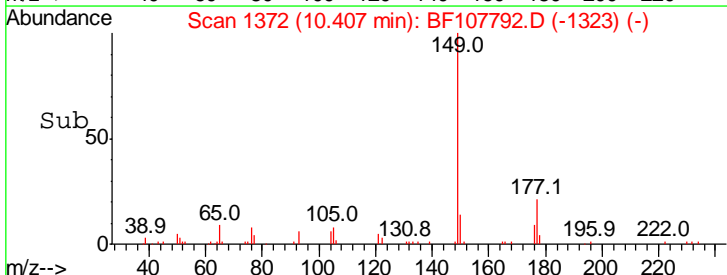
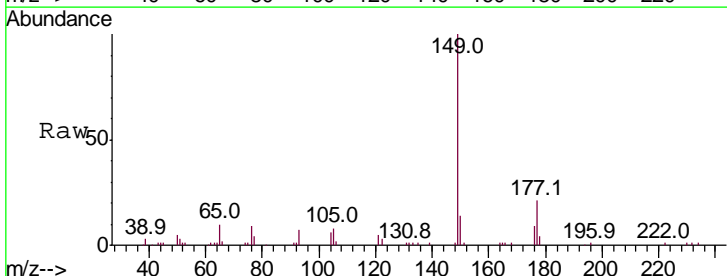
Manual Integrations
 APPROVED
 Sohil
 7/31/2018 2:42:07 PM

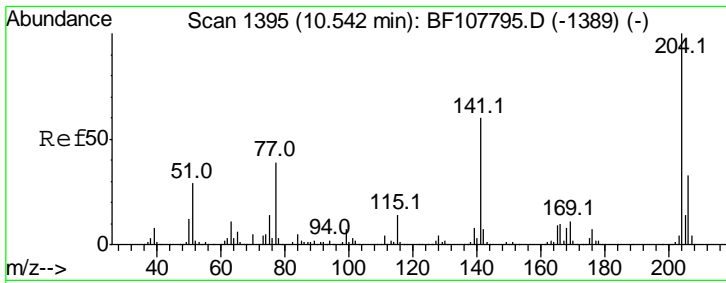


#59
 Diethylphthalate
 Concen: 2.651 ng
 RT: 10.41 min Scan# 1372
 Delta R.T. -0.01 min
 Lab File: BF107792.D
 Acq: 30 Jul 2018 11:17

Tgt Ion: 149 Resp: 62573

Ion	Ratio	Lower	Upper
149	100		
177	21.0	16.1	24.1
150	13.7	10.1	15.1





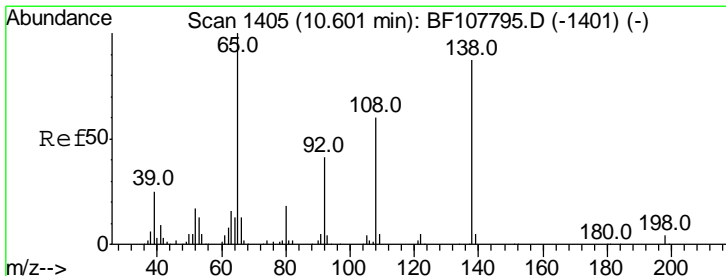
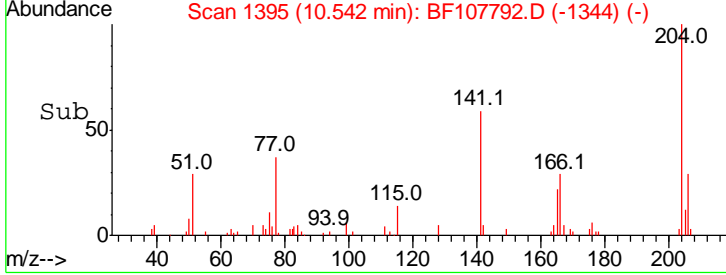
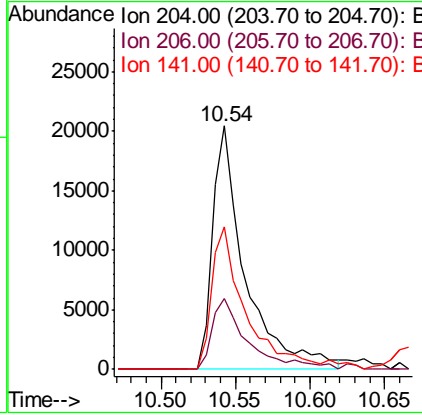
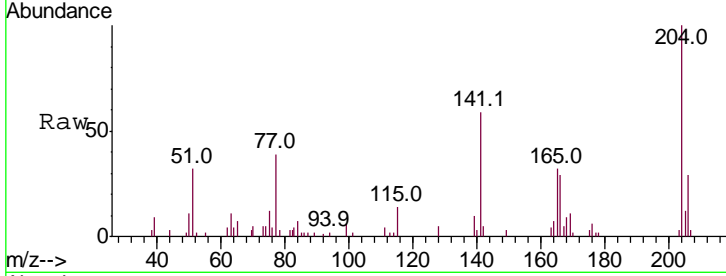
#60
 4-Chlorophenyl-phenylether
 Concen: 2.779 ng
 RT: 10.54 min Scan# 1395
 Delta R.T. 0.00 min
 Lab File: BF107792.D
 Acq: 30 Jul 2018 11:17

Instrument :
 BNA_F
ClientSampled :
 SSTDICC2.5

Tgt Ion	Resp	Lower	Upper
204	100		
206	29.1	26.5	39.7
141	58.7	54.6	81.8

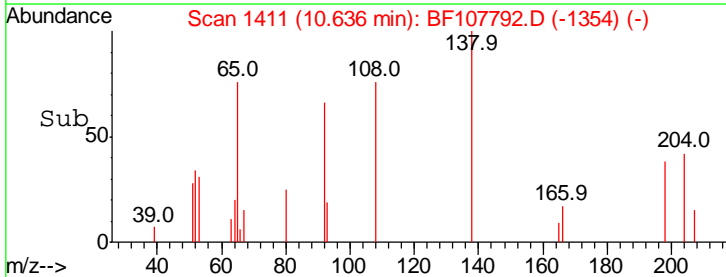
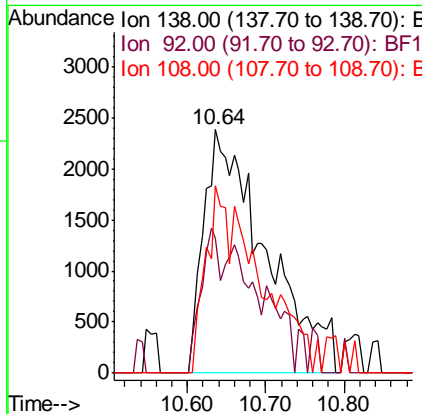
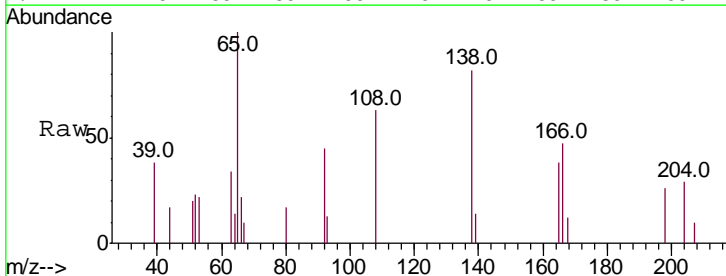
Manual Integrations
APPROVED

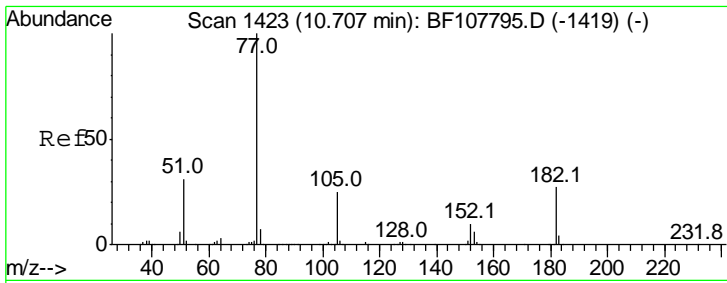
Sohil
 7/31/2018 2:42:07 PM



#61
 4-Nitroaniline
 Concen: 2.848 ng m
 RT: 10.64 min Scan# 1411
 Delta R.T. 0.04 min
 Lab File: BF107792.D
 Acq: 30 Jul 2018 11:17

Tgt Ion	Resp	Lower	Upper
138	100		
92	55.5	30.2	70.2
108	76.8	52.5	92.5





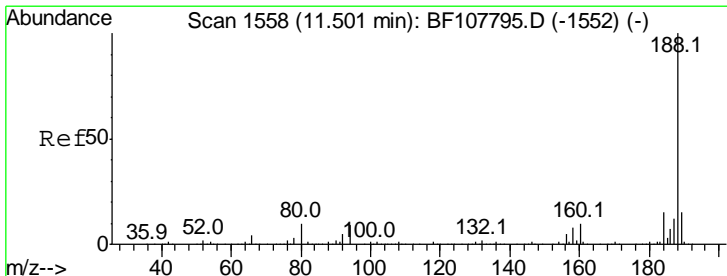
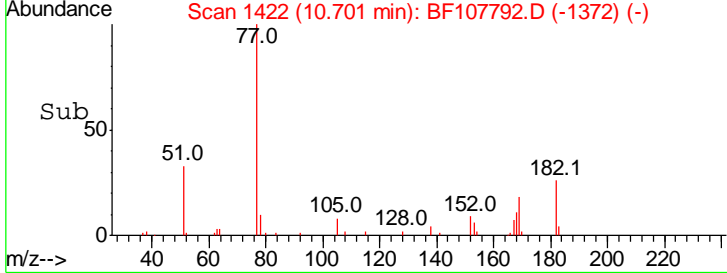
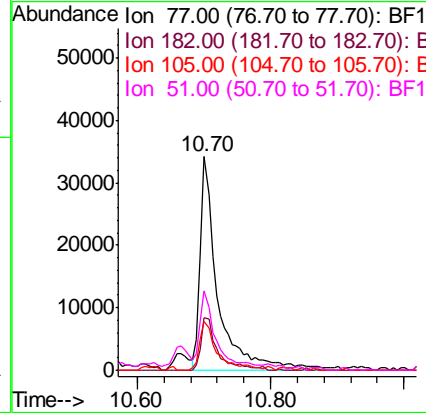
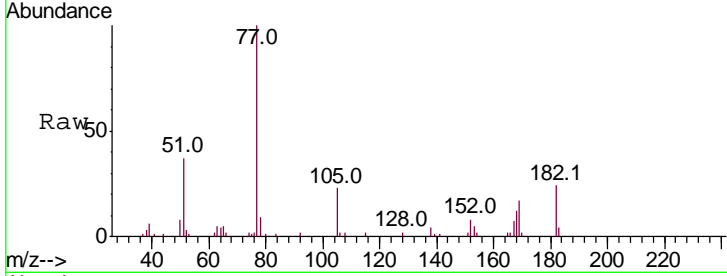
#62
 Azobenzene
 Concen: 2.790 ng
 RT: 10.70 min Scan# 1422
 Delta R.T. -0.01 min
 Lab File: BF107792.D
 Acq: 30 Jul 2018 11:17

Instrument :
 BNA_F
 ClientSampled :
 SSTDICC2.5

Tgt Ion	Resp	Lower	Upper
77	100		
182	24.3	1.7	41.7
105	23.0	3.0	43.0
51	37.0	9.9	49.9

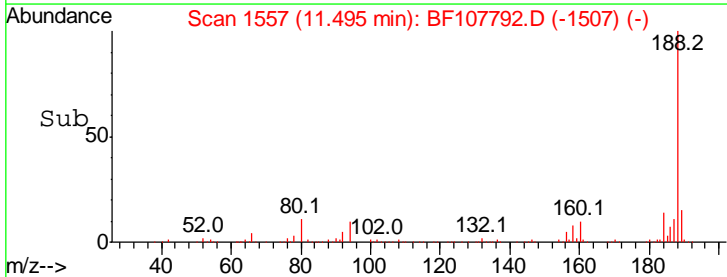
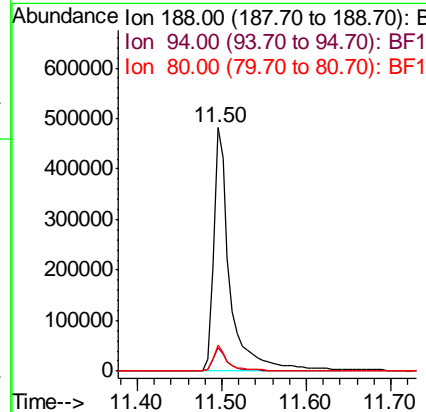
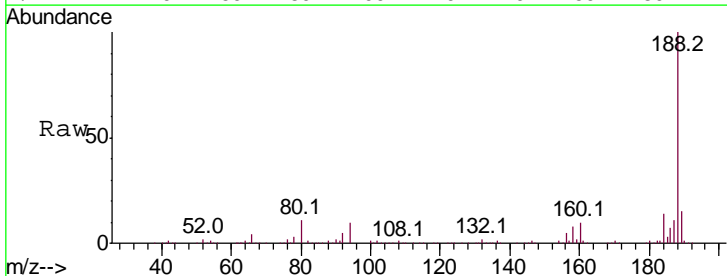
Manual Integrations
 APPROVED

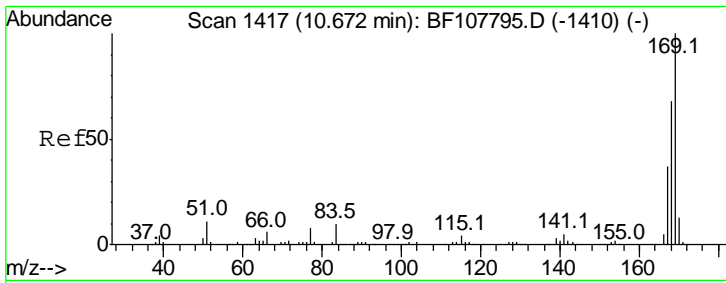
Sohil
 7/31/2018 2:42:07 PM



#63
 Phenanthrene-d10
 Concen: 20.000 ng
 RT: 11.50 min Scan# 1557
 Delta R.T. -0.01 min
 Lab File: BF107792.D
 Acq: 30 Jul 2018 11:17

Tgt Ion	Resp	Lower	Upper
188	100		
94	9.7	8.5	12.7
80	10.7	9.2	13.8





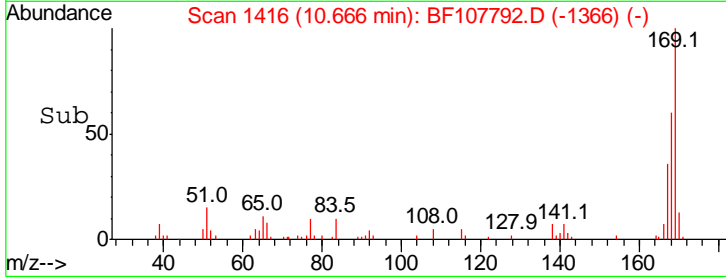
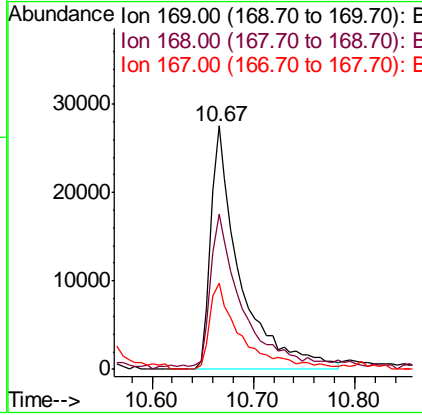
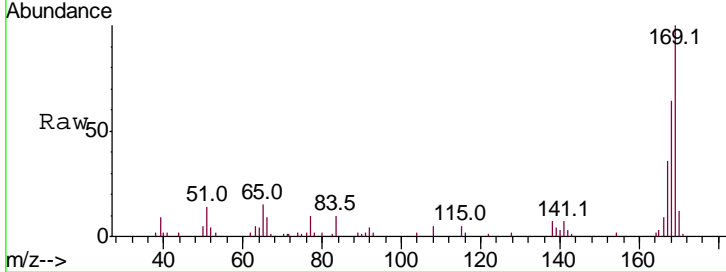
#65
 n-Nitrosodiphenylamine
 Concen: 2.481 ng
 RT: 10.67 min Scan# 1416
 Delta R.T. -0.01 min
 Lab File: BF107792.D
 Acq: 30 Jul 2018 11:17

Instrument :
 BNA_F
ClientSampled :
 SSTDICC2.5

Tgt Ion	Resp	Lower	Upper
169	100		
168	64.0	54.4	81.6
167	35.6	29.8	44.6

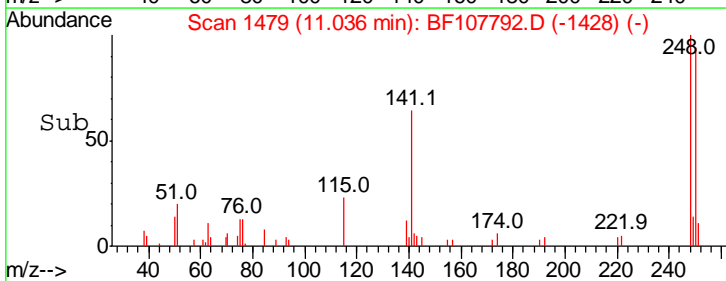
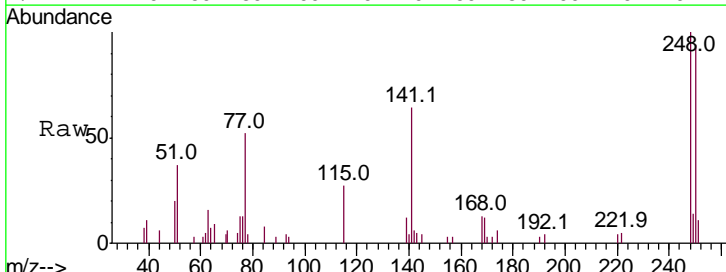
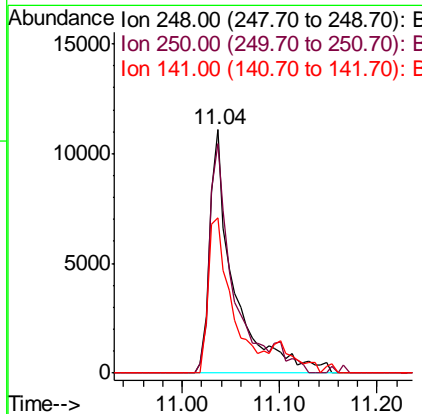
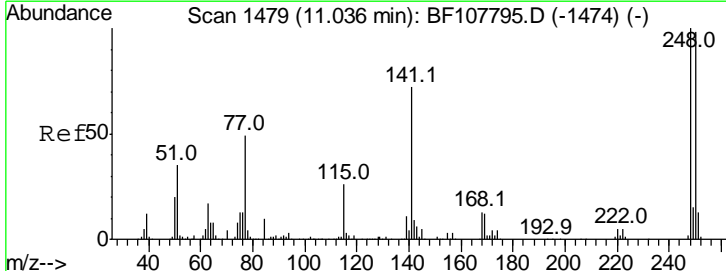
Manual Integrations
APPROVED

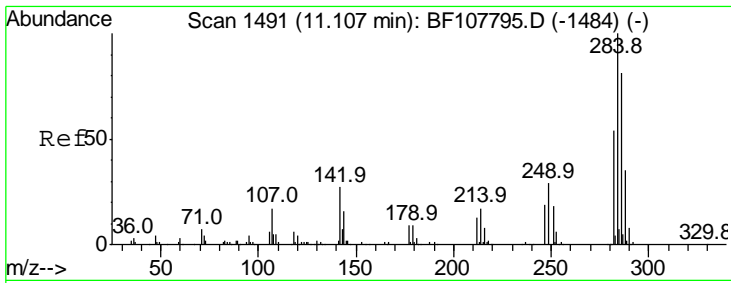
Sohil
 7/31/2018 2:42:07 PM



#66
 4-Bromophenyl-phenylether
 Concen: 2.471 ng
 RT: 11.04 min Scan# 1479
 Delta R.T. 0.00 min
 Lab File: BF107792.D
 Acq: 30 Jul 2018 11:17

Tgt Ion	Resp	Lower	Upper
248	100		
250	94.2	76.9	115.3
141	63.8	74.4	111.6#



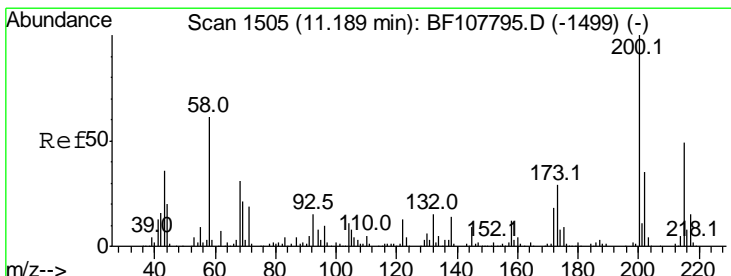
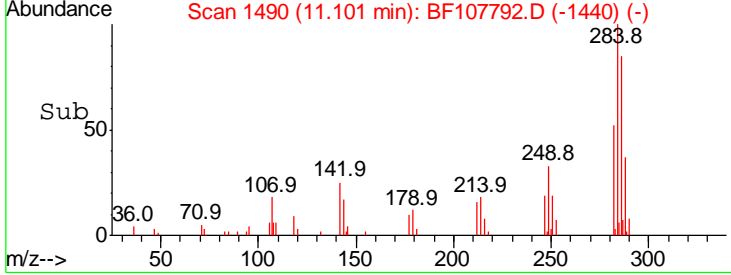
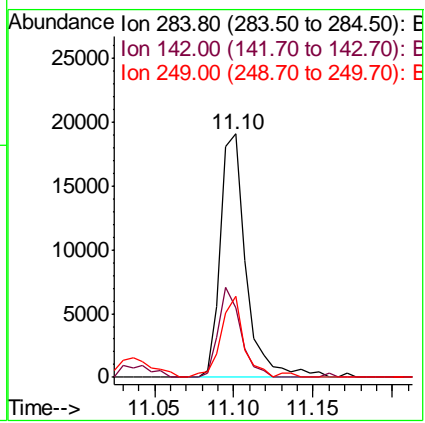
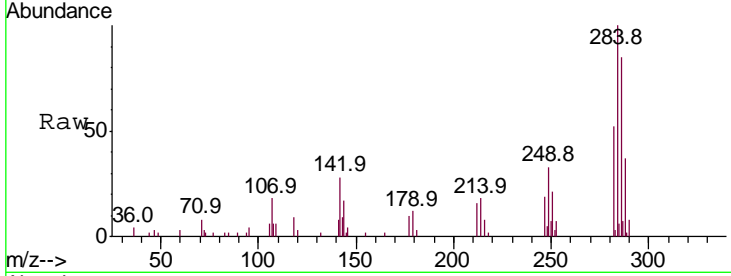


#67
 Hexachlorobenzene
 Concen: 2.527 ng
 RT: 11.10 min Scan# 1490
 Delta R.T. -0.01 min
 Lab File: BF107792.D
 Acq: 30 Jul 2018 11:17

Instrument :
 BNA_F
 ClientSampled :
 SSTDICC2.5

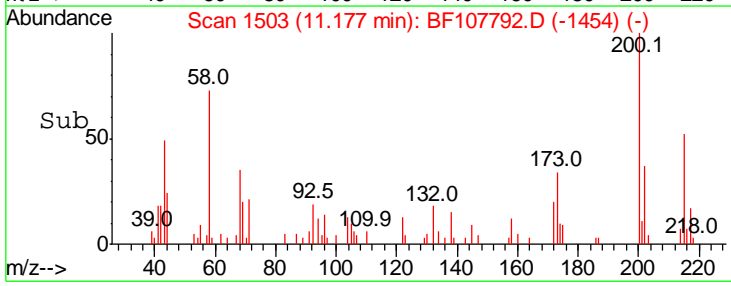
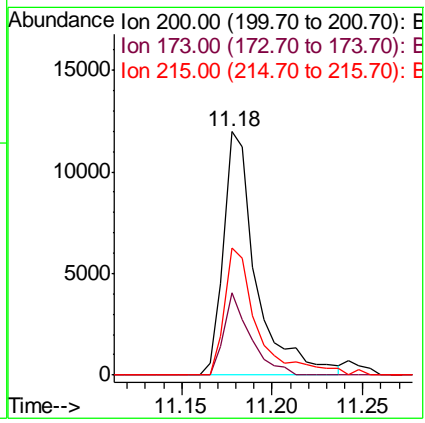
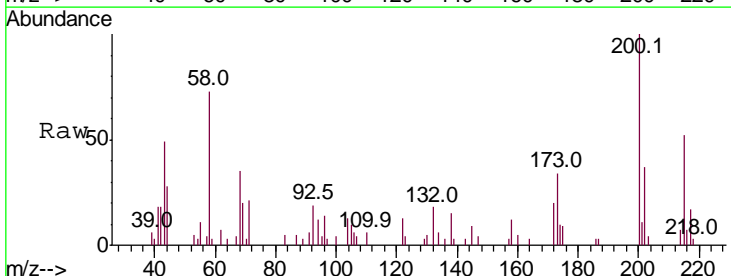
Tgt Ion	Resp	Lower	Upper
284	100		
142	28.4	34.6	52.0#
249	33.4	24.8	37.2

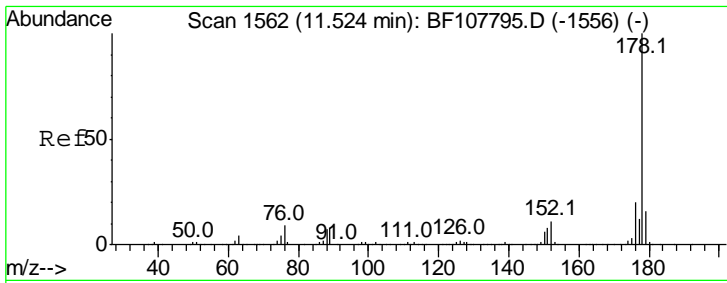
Manual Integrations
APPROVED
 Sohil
 7/31/2018 2:42:07 PM



#68
 Atrazine
 Concen: 2.224 ng
 RT: 11.18 min Scan# 1503
 Delta R.T. -0.01 min
 Lab File: BF107792.D
 Acq: 30 Jul 2018 11:17

Tgt Ion	Resp	Lower	Upper
200	100		
173	34.1	8.6	48.6
215	52.2	25.1	65.1



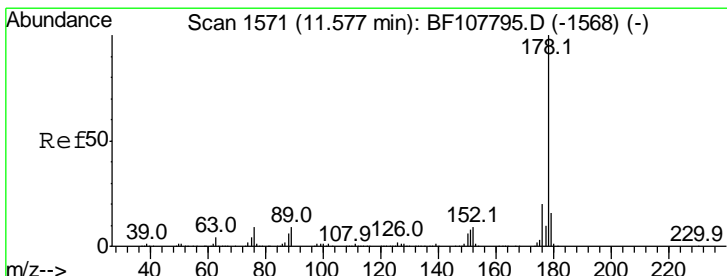
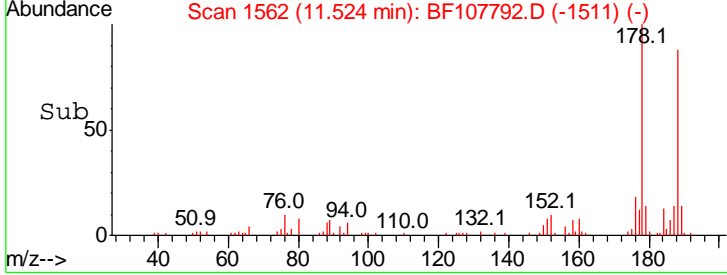
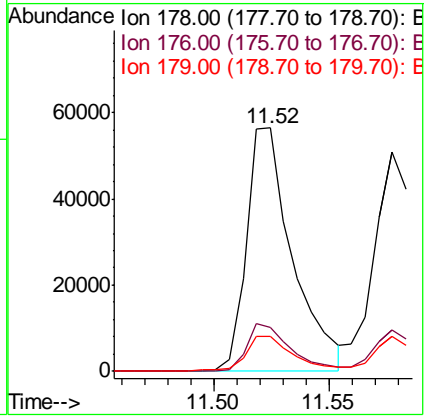
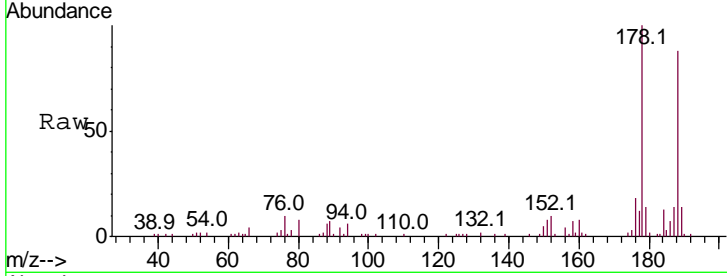


#70
 Phenanthrene
 Concen: 2.460 ng
 RT: 11.52 min Scan# 1562
 Delta R.T. 0.00 min
 Lab File: BF107792.D
 Acq: 30 Jul 2018 11:17

Instrument :
 BNA_F
 ClientSampled :
 SSTDICC2.5

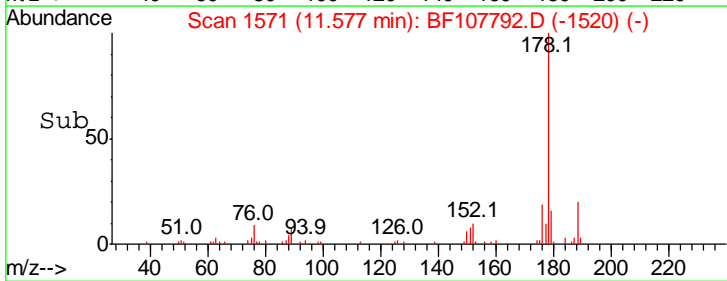
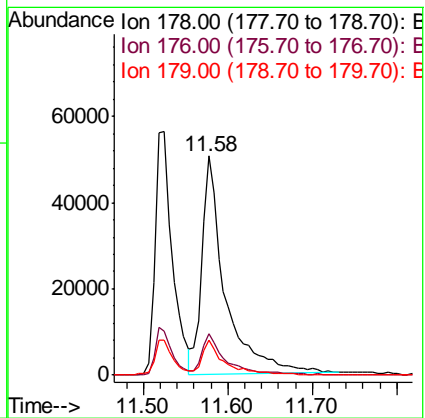
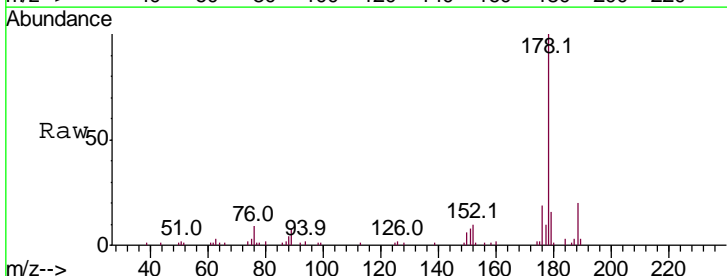
Tgt Ion	Resp	Lower	Upper
178	100		
176	17.9	15.8	23.8
179	14.2	13.0	19.6

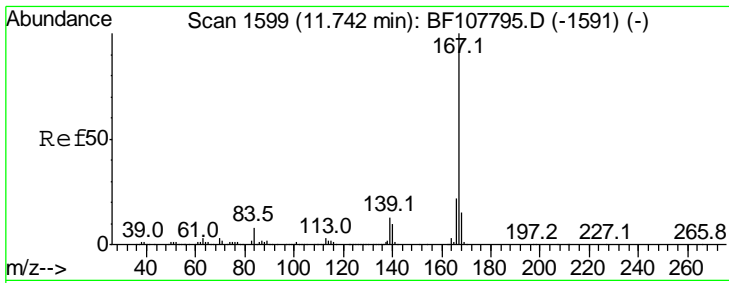
Manual Integrations
APPROVED
 Sohil
 7/31/2018 2:42:07 PM



#71
 Anthracene
 Concen: 2.986 ng
 RT: 11.58 min Scan# 1571
 Delta R.T. 0.00 min
 Lab File: BF107792.D
 Acq: 30 Jul 2018 11:17

Tgt Ion	Resp	Lower	Upper
178	100		
176	19.2	15.4	23.2
179	15.9	12.6	19.0





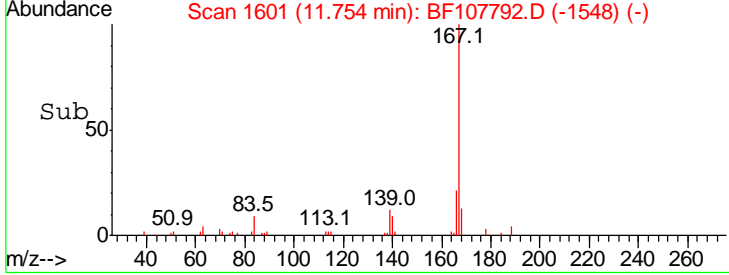
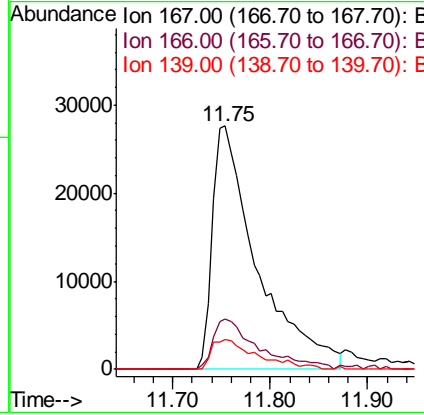
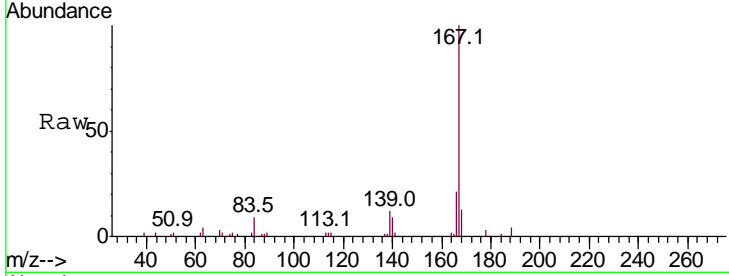
#72
 Carbazole
 Concen: 2.639 ng
 RT: 11.75 min Scan# 1601
 Delta R.T. 0.01 min
 Lab File: BF107792.D
 Acq: 30 Jul 2018 11:17

Instrument :
 BNA_F
ClientSampled :
 SSTDICC2.5

Tgt Ion	Resp	Lower	Upper
167	100		
166	20.9	17.6	26.4
139	12.1	10.9	16.3

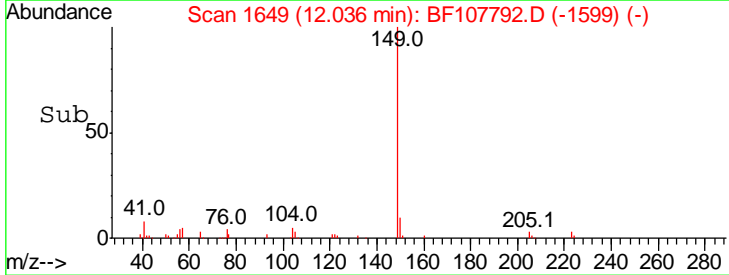
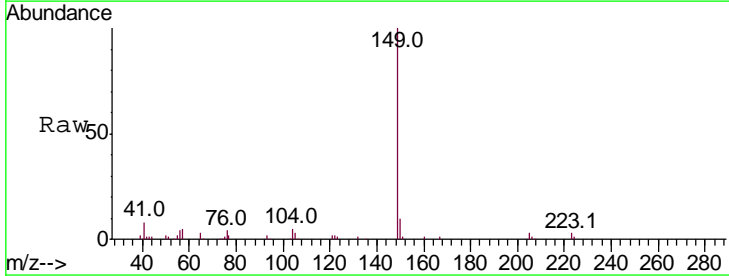
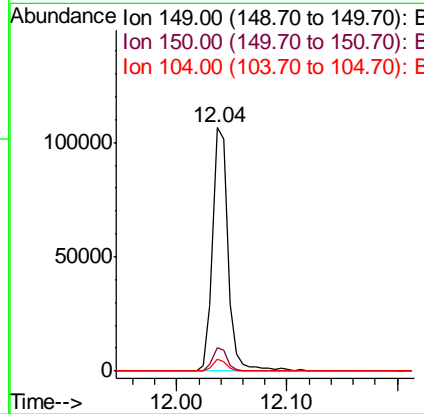
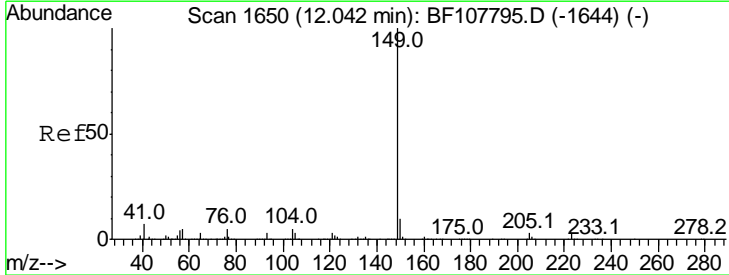
Manual Integrations
APPROVED

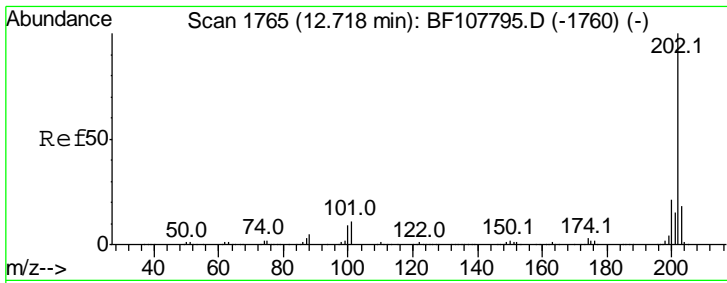
Sohil
 7/31/2018 2:42:07 PM



#73
 Di-n-butylphthalate
 Concen: 2.711 ng
 RT: 12.04 min Scan# 1649
 Delta R.T. -0.01 min
 Lab File: BF107792.D
 Acq: 30 Jul 2018 11:17

Tgt Ion	Resp	Lower	Upper
149	100		
150	9.6	7.8	11.6
104	5.0	3.8	5.8





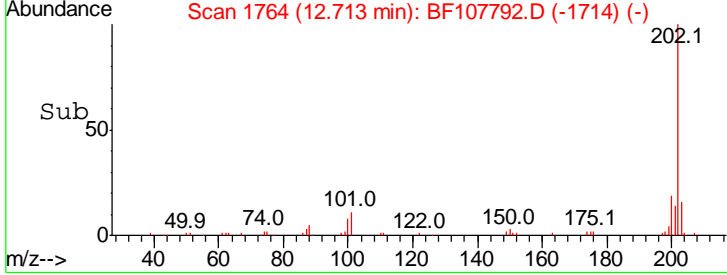
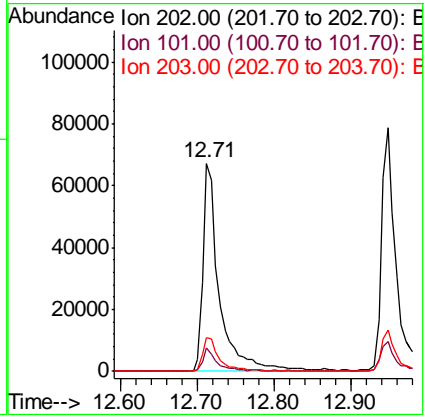
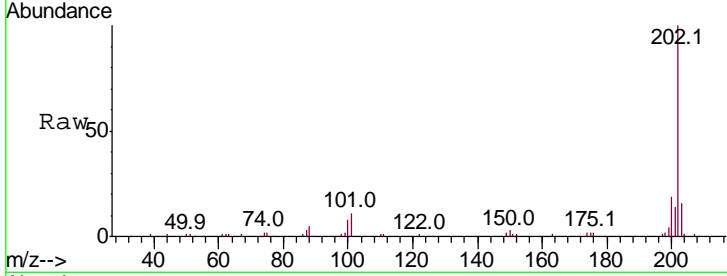
#74
 Fluoranthene
 Concen: 2.944 ng
 RT: 12.71 min Scan# 1764
 Delta R.T. -0.01 min
 Lab File: BF107792.D
 Acq: 30 Jul 2018 11:17

Instrument :
 BNA_F
ClientSampled :
 SSTDICC2.5

Tgt Ion: 202 Resp: 100726

Ion	Ratio	Lower	Upper
202	100		
101	11.5	0.0	34.1
203	16.0	0.0	38.1

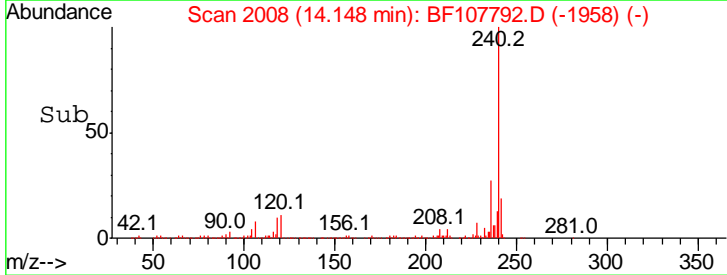
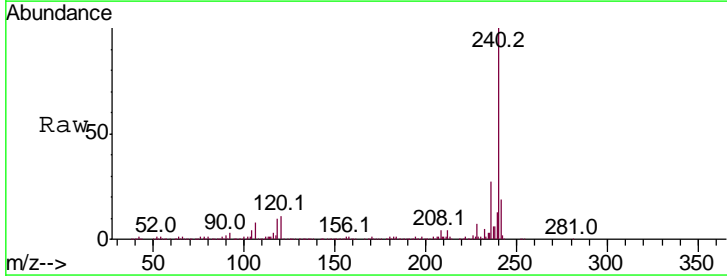
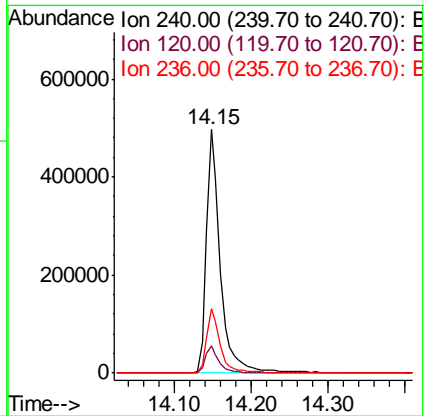
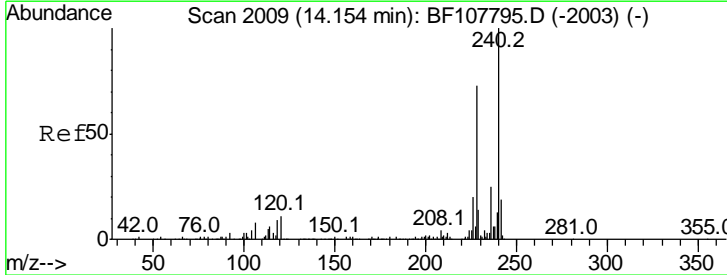
Manual Integrations
APPROVED
 Sohil
 7/31/2018 2:42:07 PM

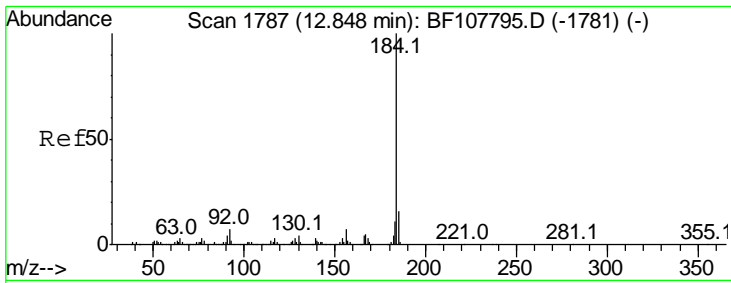


#75
 Chrysene-d12
 Concen: 20.000 ng
 RT: 14.15 min Scan# 2008
 Delta R.T. -0.01 min
 Lab File: BF107792.D
 Acq: 30 Jul 2018 11:17

Tgt Ion: 240 Resp: 625684

Ion	Ratio	Lower	Upper
240	100		
120	11.3	9.5	14.3
236	26.5	20.7	31.1



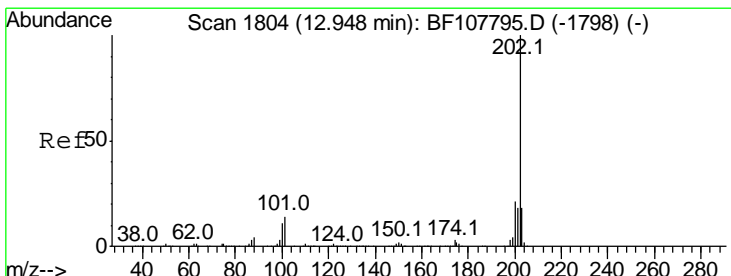
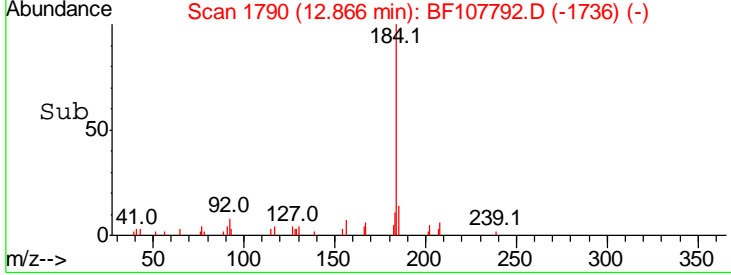
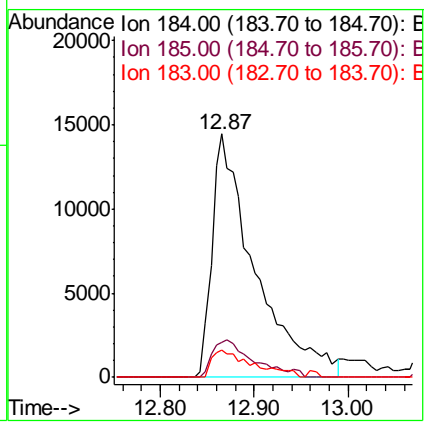
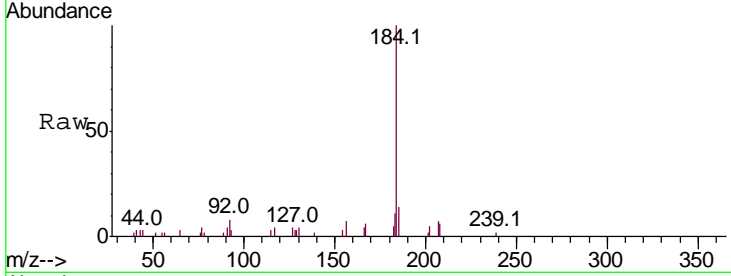


#76
Benzidine
Concen: 2.550 ng
RT: 12.87 min Scan# 1790
Delta R.T. 0.02 min
Lab File: BF107792.D
Acq: 30 Jul 2018 11:17

Instrument : BNA_F
ClientSampled : SSTDICC2.5

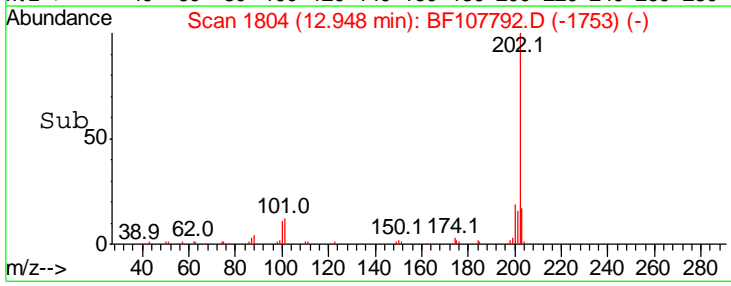
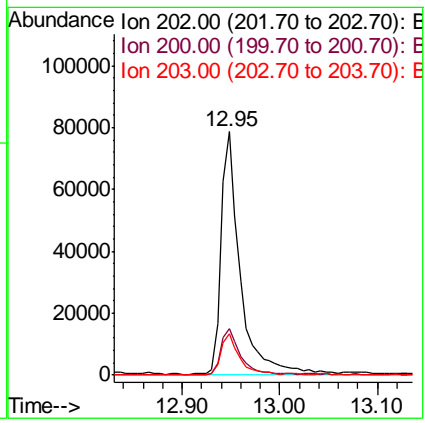
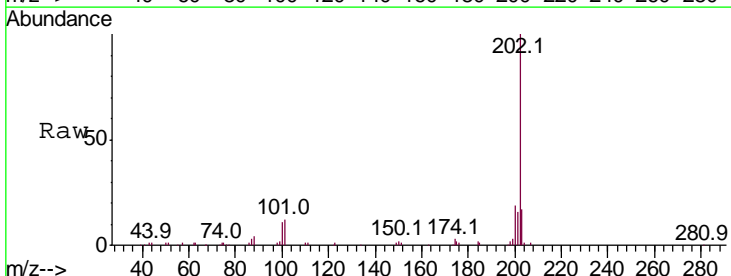
Tgt Ion	Resp	Lower	Upper
184	100		
185	14.4	12.6	18.8
183	11.0	9.3	13.9

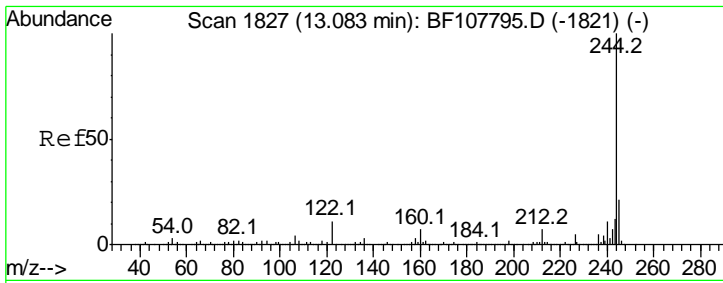
Manual Integrations
APPROVED
Sohil
7/31/2018 2:42:07 PM



#77
Pyrene
Concen: 2.531 ng
RT: 12.95 min Scan# 1804
Delta R.T. 0.00 min
Lab File: BF107792.D
Acq: 30 Jul 2018 11:17

Tgt Ion	Resp	Lower	Upper
202	100		
200	18.9	17.4	26.2
203	17.1	14.3	21.5





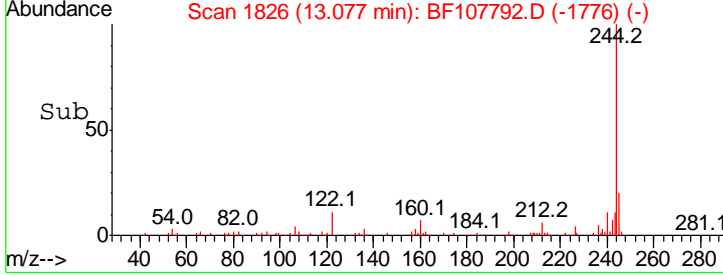
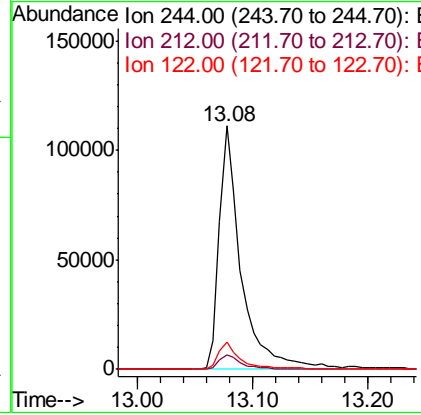
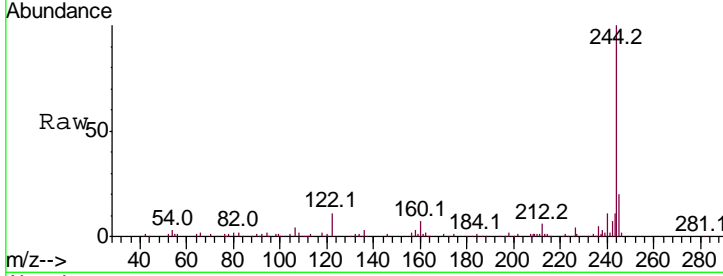
#78
 Terphenyl-d14
 Concen: 5.998 ng
 RT: 13.08 min Scan# 1826
 Delta R.T. -0.01 min
 Lab File: BF107792.D
 Acq: 30 Jul 2018 11:17

Instrument :
 BNA_F
ClientSampled :
 SSTDICC2.5

Tgt Ion	Ratio	Lower	Upper
244	100		
212	6.2	5.4	8.0
122	11.3	11.0	16.4

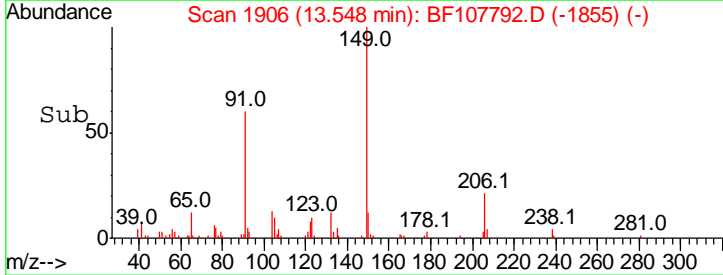
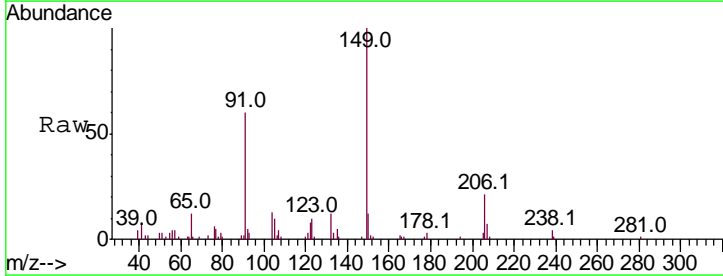
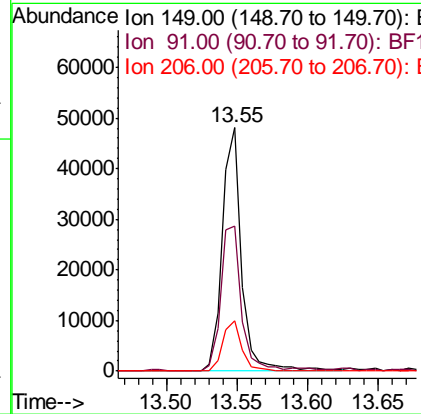
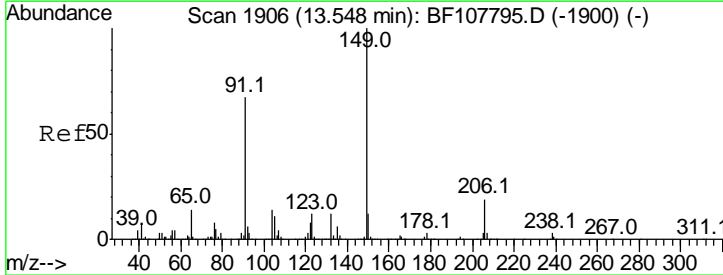
Manual Integrations
APPROVED

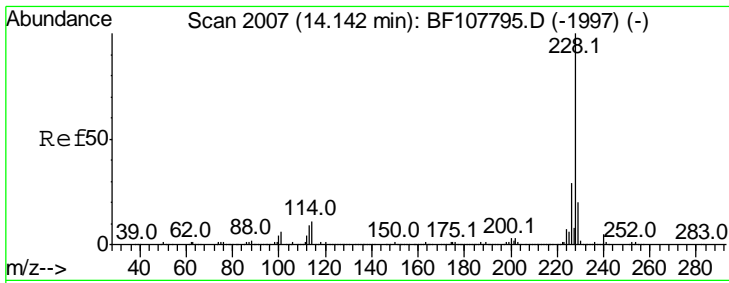
Sohil
 7/31/2018 2:42:07 PM



#79
 Butylbenzylphthalate
 Concen: 2.499 ng
 RT: 13.55 min Scan# 1906
 Delta R.T. 0.00 min
 Lab File: BF107792.D
 Acq: 30 Jul 2018 11:17

Tgt Ion	Ratio	Lower	Upper
149	100		
91	59.8	56.8	85.2
206	20.7	14.1	21.1





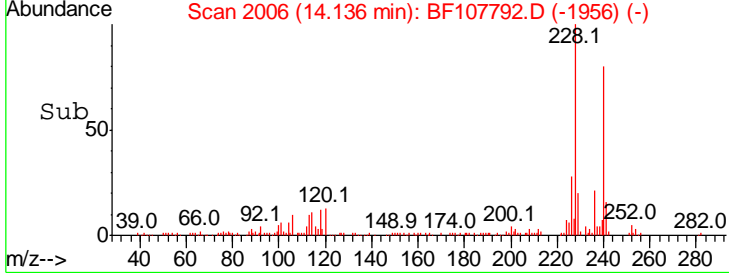
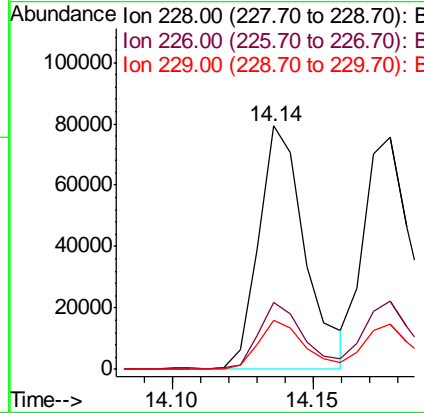
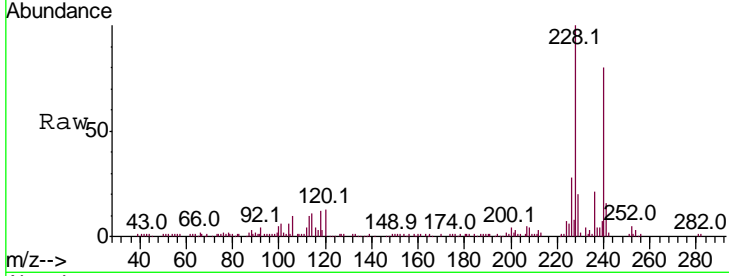
#80
 Benzo(a)anthracene
 Concen: 2.473 ng
 RT: 14.14 min Scan# 2006
 Delta R.T. -0.01 min
 Lab File: BF107792.D
 Acq: 30 Jul 2018 11:17

Instrument :
 BNA_F
 ClientSampled :
 SSTDICC2.5

Tgt Ion	Ratio	Lower	Upper
228	100		
226	27.6	22.6	33.8
229	20.1	15.8	23.6

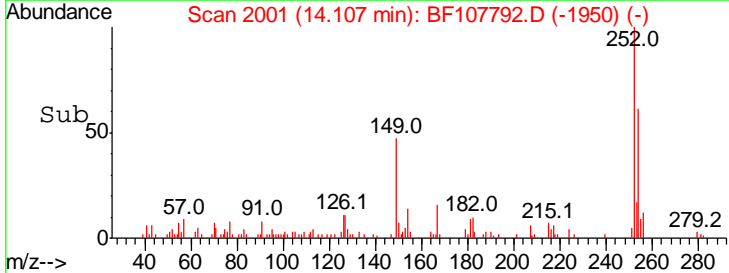
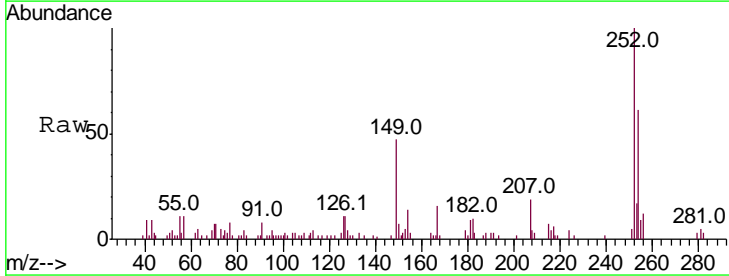
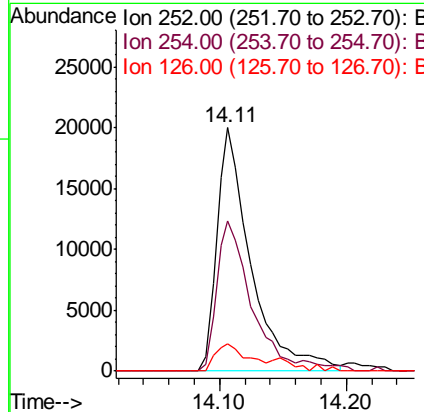
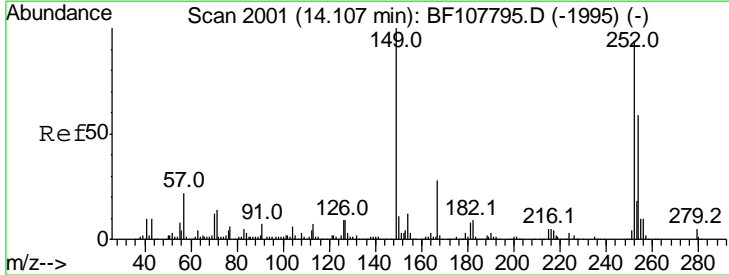
Manual Integrations
 APPROVED

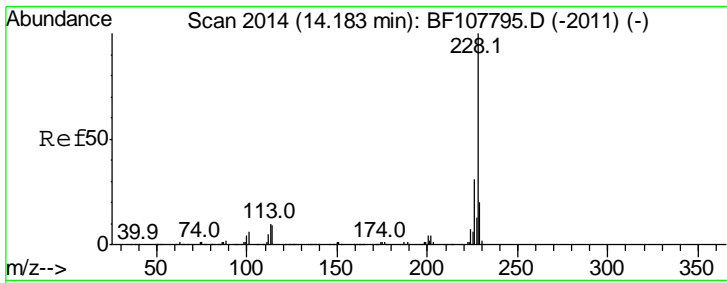
Sohil
 7/31/2018 2:42:07 PM



#81
 3,3'-Dichlorobenzidine
 Concen: 3.216 ng
 RT: 14.11 min Scan# 2001
 Delta R.T. 0.00 min
 Lab File: BF107792.D
 Acq: 30 Jul 2018 11:17

Tgt Ion	Ratio	Lower	Upper
252	100		
254	61.4	50.4	75.6
126	11.4	11.3	16.9





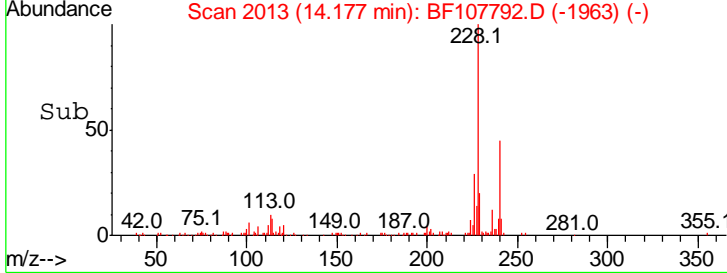
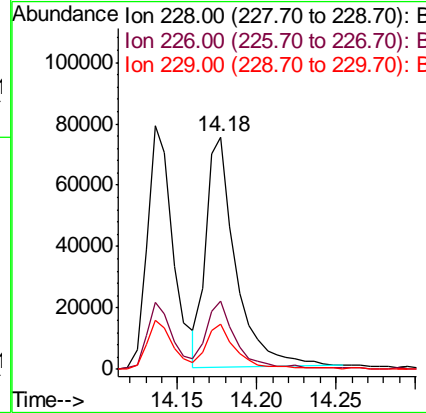
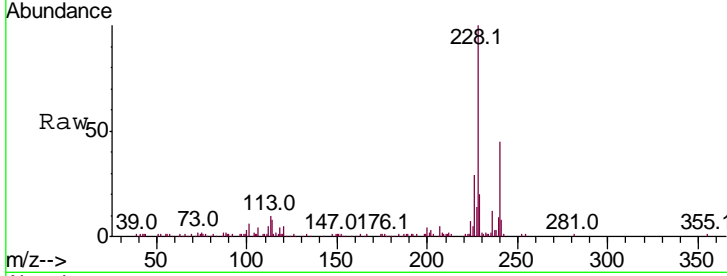
#82
 Chrysene
 Concen: 2.820 ng
 RT: 14.18 min Scan# 2013
 Delta R.T. -0.01 min
 Lab File: BF107792.D
 Acq: 30 Jul 2018 11:17

Instrument :
 BNA_F
 ClientSampled :
 SSTDICC2.5

Tgt Ion	Resp	Lower	Upper
228	100		
226	29.3	25.0	37.6
229	19.7	16.2	24.4

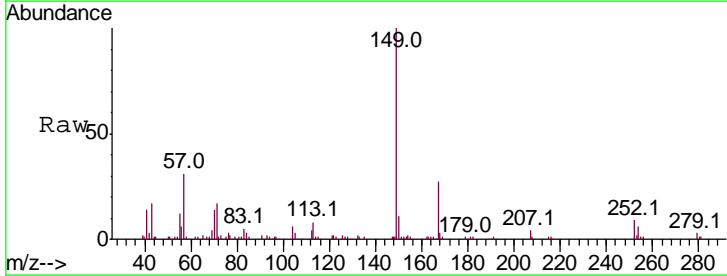
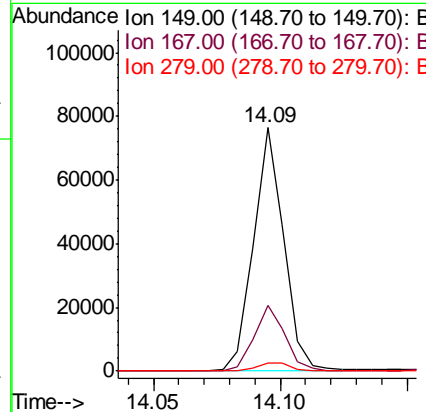
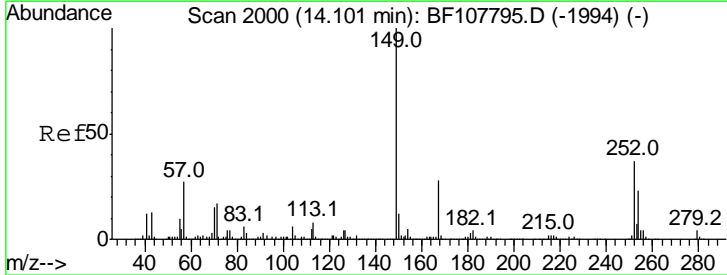
Manual Integrations
 APPROVED

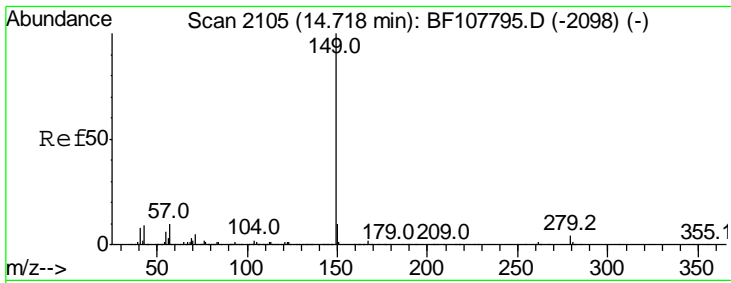
Sohil
 7/31/2018 2:42:07 PM



#83
 Bis(2-ethylhexyl)phthalate
 Concen: 2.446 ng
 RT: 14.09 min Scan# 1999
 Delta R.T. -0.01 min
 Lab File: BF107792.D
 Acq: 30 Jul 2018 11:17

Tgt Ion	Resp	Lower	Upper
149	100		
167	26.9	21.3	31.9
279	3.4	3.0	4.4



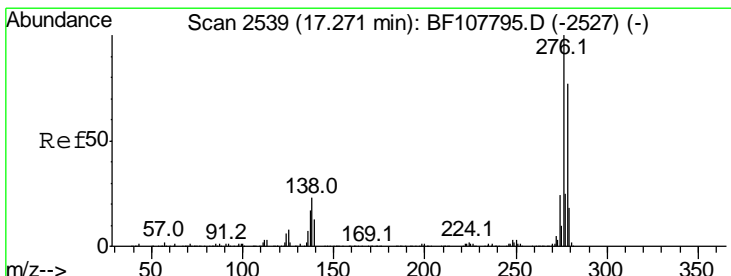
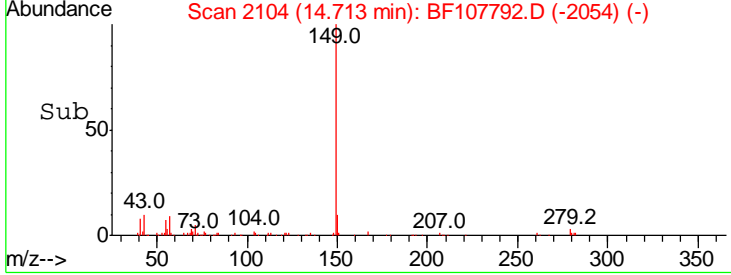
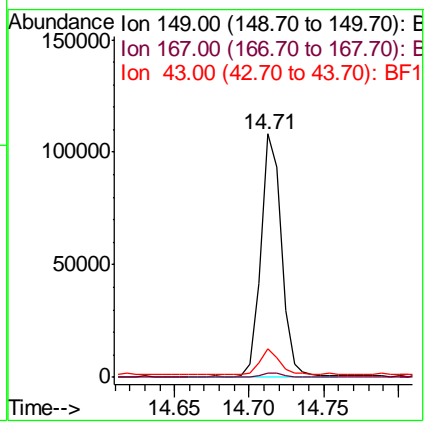
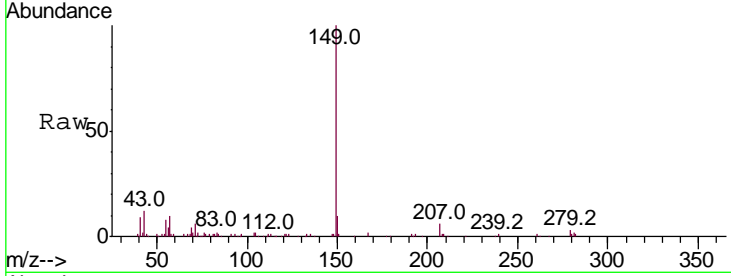


#84
 Di-n-octyl phthalate
 Concen: 2.577 ng
 RT: 14.71 min Scan# 2104
 Delta R.T. -0.01 min
 Lab File: BF107792.D
 Acq: 30 Jul 2018 11:17

Instrument :
 BNA_F
ClientSampled :
 SSTDICC2.5

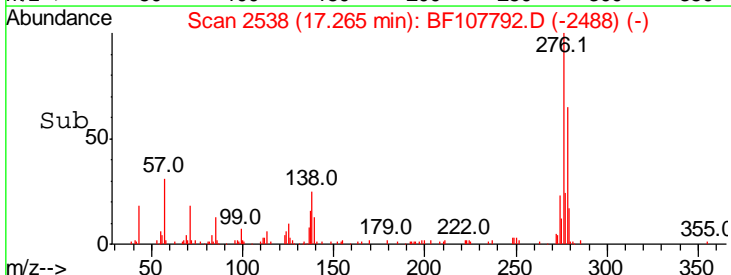
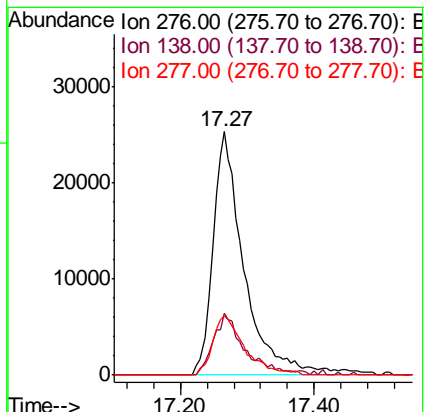
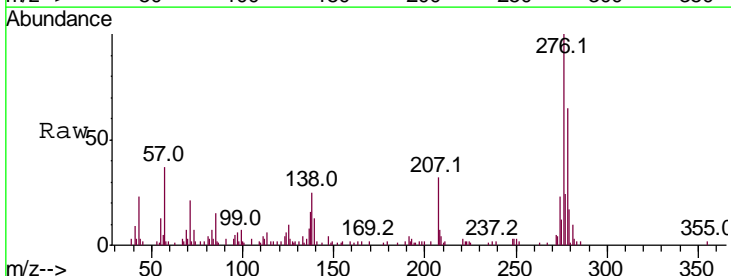
Tgt Ion	Ratio	Lower	Upper
149	100		
167	2.7	1.2	1.8#
43	10.3	8.4	12.6

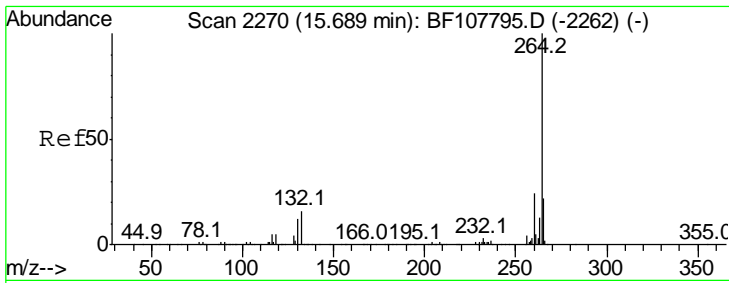
Manual Integrations
APPROVED
 Sohil
 7/31/2018 2:42:07 PM



#85
 Indeno(1,2,3-cd)pyrene
 Concen: 2.746 ng
 RT: 17.27 min Scan# 2538
 Delta R.T. -0.01 min
 Lab File: BF107792.D
 Acq: 30 Jul 2018 11:17

Tgt Ion	Ratio	Lower	Upper
276	100		
138	25.2	25.0	37.6
277	25.4	20.1	30.1



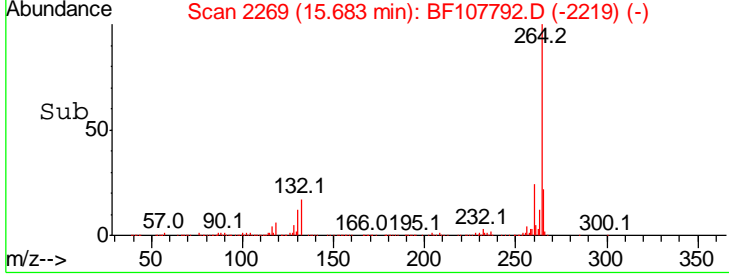
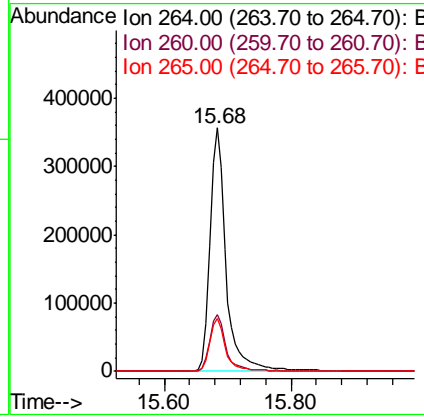
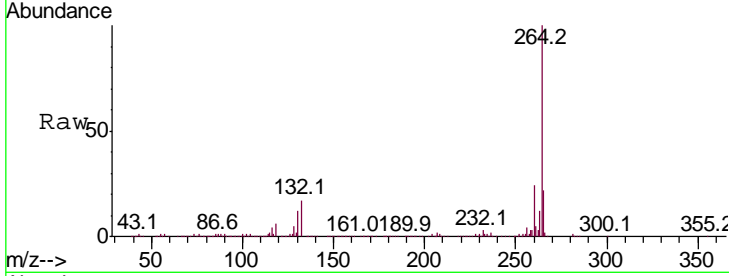


#86
 Perylene-d12
 Concen: 20.000 ng
 RT: 15.68 min Scan# 2269
 Delta R.T. -0.01 min
 Lab File: BF107792.D
 Acq: 30 Jul 2018 11:17

Instrument :
 BNA_F
ClientSampled :
 SSTDICC2.5

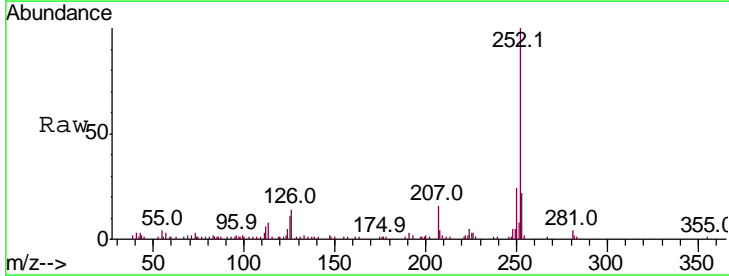
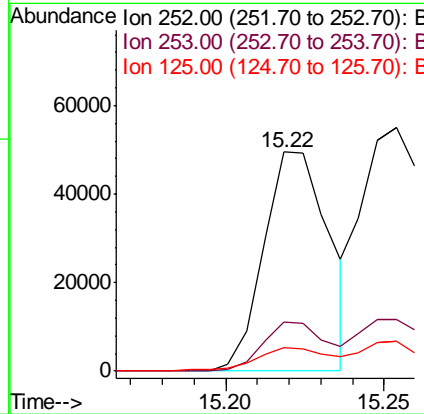
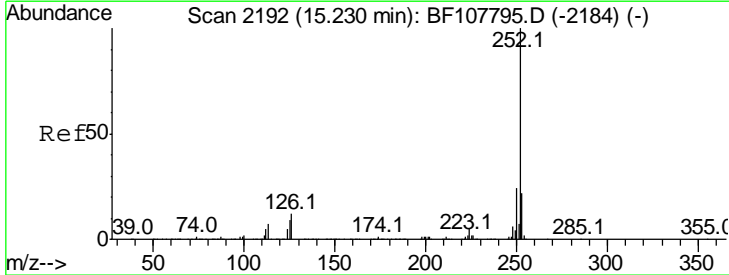
Tgt Ion	Resp	Lower	Upper
264	100		
260	23.5	19.2	28.8
265	21.6	17.5	26.3

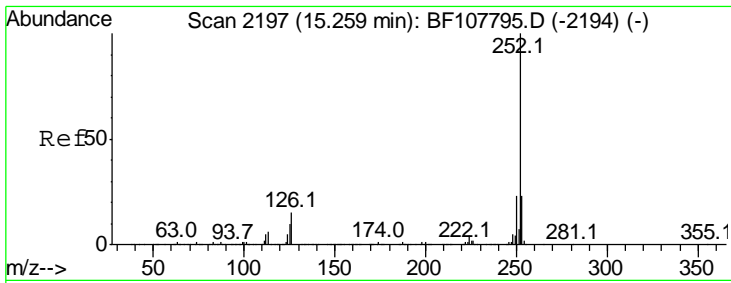
Manual Integrations
APPROVED
 Sohil
 7/31/2018 2:42:07 PM



#87
 Benzo(b)fluoranthene
 Concen: 2.050 ng
 RT: 15.22 min Scan# 2190
 Delta R.T. -0.01 min
 Lab File: BF107792.D
 Acq: 30 Jul 2018 11:17

Tgt Ion	Resp	Lower	Upper
252	100		
253	22.3	17.0	25.6
125	10.6	9.0	13.6



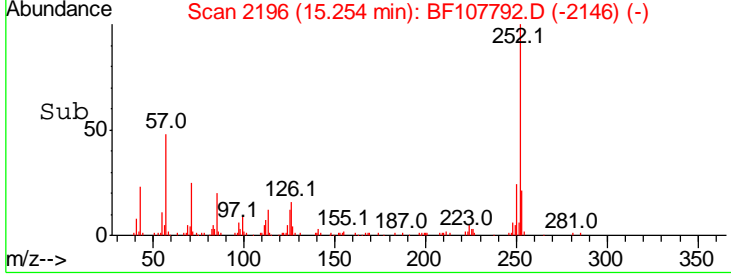
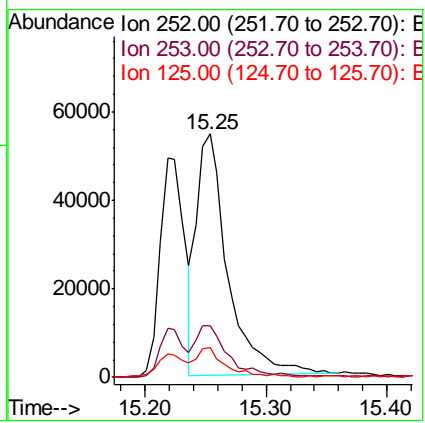
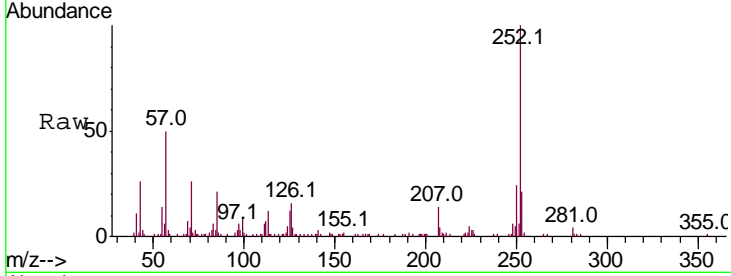


#88
 Benzo(k)fluoranthene
 Concen: 2.874 ng
 RT: 15.25 min Scan# 2196
 Delta R.T. -0.01 min
 Lab File: BF107792.D
 Acq: 30 Jul 2018 11:17

Instrument :
 BNA_F
 ClientSampled :
 SSTDICC2.5

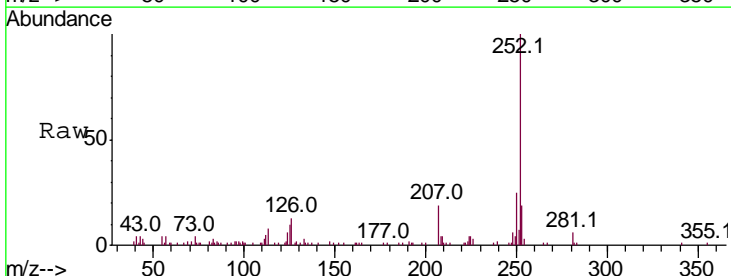
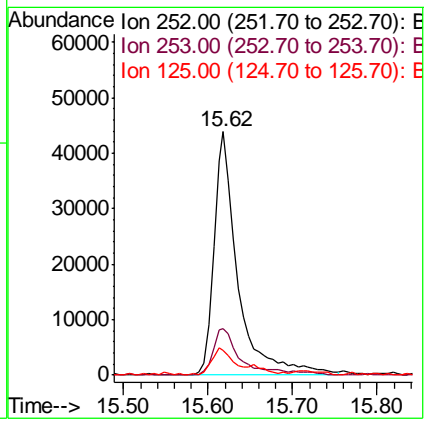
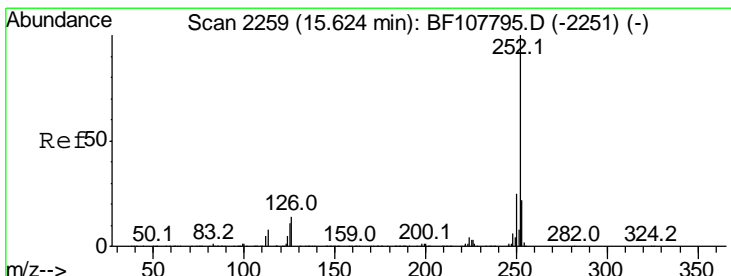
Tgt Ion	Ratio	Lower	Upper
252	100		
253	21.0	17.9	26.9
125	12.3	10.2	15.2

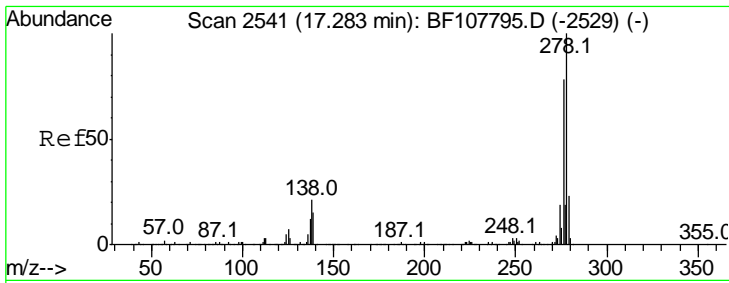
Manual Integrations
APPROVED
 Sohil
 7/31/2018 2:42:07 PM



#89
 Benzo(a)pyrene
 Concen: 2.758 ng
 RT: 15.62 min Scan# 2258
 Delta R.T. -0.01 min
 Lab File: BF107792.D
 Acq: 30 Jul 2018 11:17

Tgt Ion	Ratio	Lower	Upper
252	100		
253	19.3	17.1	25.7
125	10.2	9.8	14.6





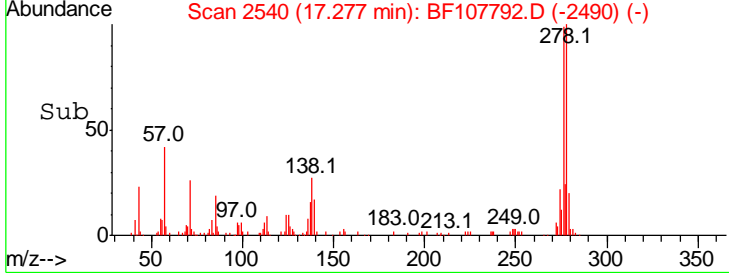
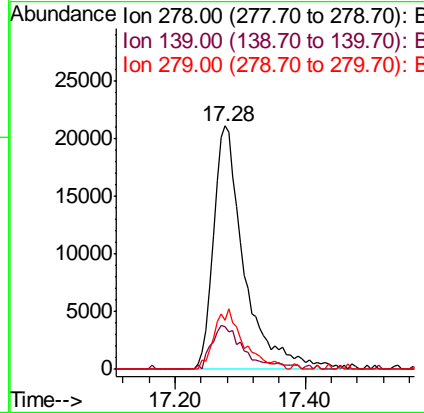
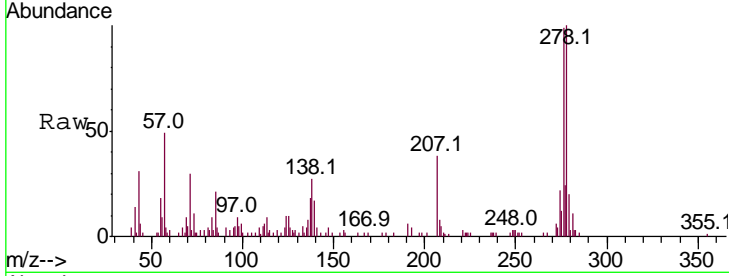
#90
 Dibenzo(a,h)anthracene
 Concen: 2.520 ng
 RT: 17.28 min Scan# 2540
 Delta R.T. -0.01 min
 Lab File: BF107792.D
 Acq: 30 Jul 2018 11:17

Instrument :
 BNA_F
 ClientSampled :
 SSTDICC2.5

Tgt Ion	Resp	Lower	Upper
278	100		
139	17.4	15.9	23.9
279	20.3	19.0	28.4

Manual Integrations
 APPROVED

Sohil
 7/31/2018 2:42:07 PM



#91
 Benzo(g,h,i)perylene
 Concen: 2.429 ng
 RT: 17.75 min Scan# 2620
 Delta R.T. -0.01 min
 Lab File: BF107792.D
 Acq: 30 Jul 2018 11:17

Tgt Ion	Resp	Lower	Upper
276	100		
277	20.2	17.9	26.9
138	23.7	21.8	32.8

