

Data Path : Z:\SVOASRV\HPCHEM1\BNA F\DATA\BF081618\  
 Data File : BF108201.D  
 Acq On : 16 Aug 2018 18:04  
 Operator : JU/SJ  
 Sample : J4499-10  
 Misc :  
 ALS Vial : 12 Sample Multiplier: 1

Instrument :  
 BNA\_F  
 ClientSampleId :  
 LSB-08(0-1)

Quant Time: Aug 16 19:02:03 2018  
 Quant Method : Z:\SVOASRV\HPCHEM1\BNA F\METHODS\8270-BF080818.M  
 Quant Title : ASP BNA STANDARDS FOR 5 POINT CALIBRATION  
 QLast Update : Wed Aug 08 12:24:24 2018  
 Response via : Initial Calibration

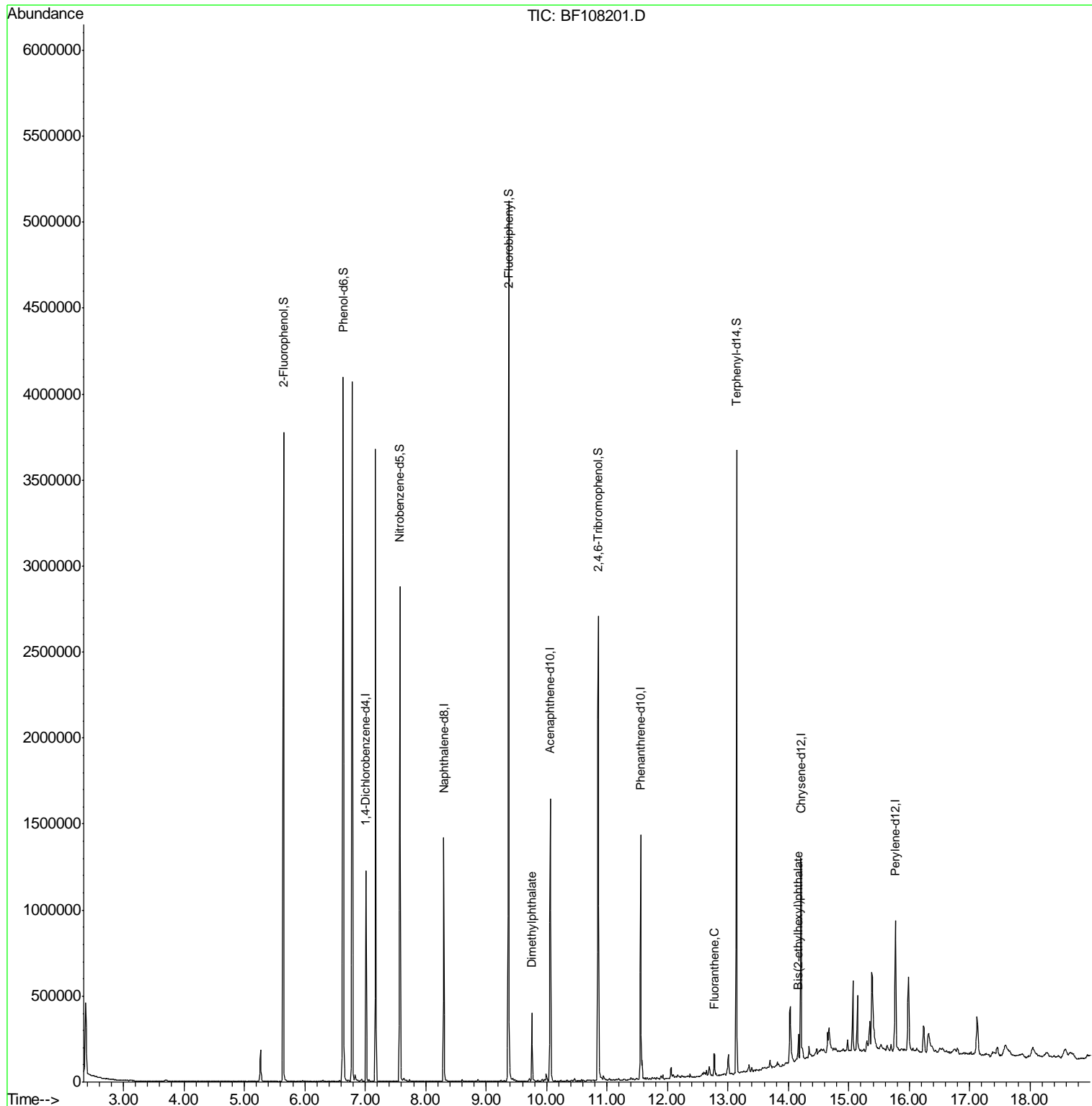
Internal Standards	R.T.	QIon	Response	Conc	Units	Dev(Min)
1) 1,4-Dichlorobenzene-d4	7.01	152	178131	20.00	ng	0.00
21) Naphthalene-d8	8.30	136	653281	20.00	ng	0.00
38) Acenaphthene-d10	10.06	164	303900	20.00	ng	0.00
63) Phenanthrene-d10	11.55	188	498169	20.00	ng	0.00
75) Chrysene-d12	14.21	240	415625	20.00	ng	-0.01
86) Perylene-d12	15.77	264	380413	20.00	ng	0.00
System Monitoring Compounds						
5) 2-Fluorophenol	5.65	112	1031794	104.87	ng	0.02
7) Phenol-d6	6.64	99	1369186	104.72	ng	0.00
23) Nitrobenzene-d5	7.58	82	912741	77.96	ng	0.00
41) 2,4,6-Tribromophenol	10.85	330	321584	106.09	ng	0.00
44) 2-Fluorobiphenyl	9.37	172	1553940	82.09	ng	0.00
78) Terphenyl-d14	13.14	244	1177958	72.06	ng	0.00
Target Compounds						
49) Dimethylphthalate	9.76	163	144729	6.837	ng	# 99
74) Fluoranthene	12.77	202	51377	2.003	ng	96
83) Bis(2-ethylhexyl)phthalate	14.17	149	39667	2.803	ng	# 96

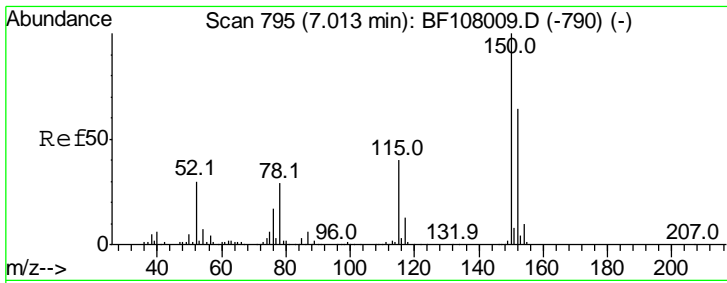
(#) = qualifier out of range (m) = manual integration (+) = signals summed

Data Path : Z:\SVOASRV\HPCHEM1\BNA F\DATA\BF081618\  
 Data File : BF108201.D  
 Acq On : 16 Aug 2018 18:04  
 Operator : JU/SJ  
 Sample : J4499-10  
 Misc :  
 ALS Vial : 12 Sample Multiplier: 1

Instrument :  
 BNA\_F  
 ClientSampleId :  
 LSB-08(0-1)

Quant Time: Aug 16 19:02:03 2018  
 Quant Method : Z:\SVOASRV\HPCHEM1\BNA F\METHODS\8270-BF080818.M  
 Quant Title : ASP BNA STANDARDS FOR 5 POINT CALIBRATION  
 QLast Update : Wed Aug 08 12:24:24 2018  
 Response via : Initial Calibration

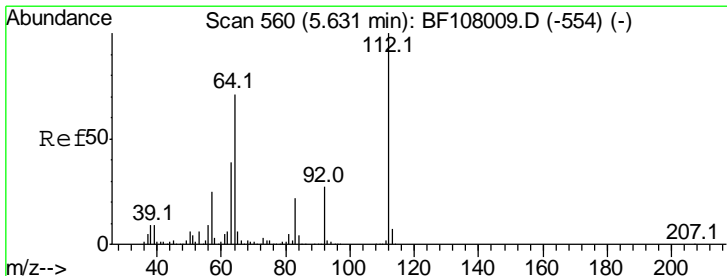
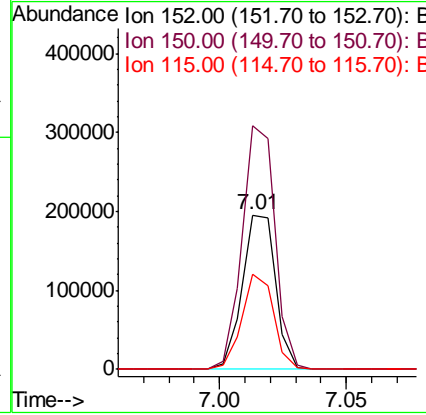
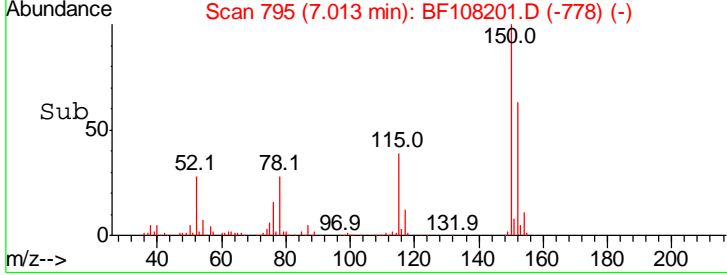
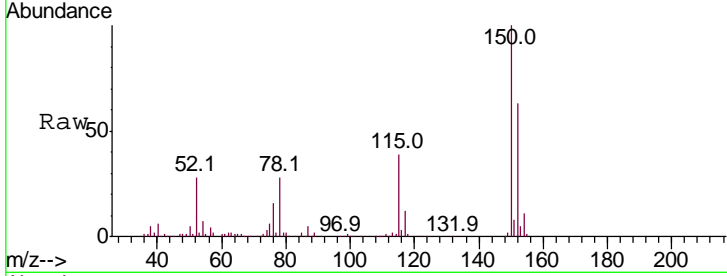




#1  
 1,4-Dichlorobenzene-d4  
 Concen: 20.000 ng  
 RT: 7.01 min Scan# 795  
 Delta R.T. 0.00 min  
 Lab File: BF108201.D  
 Acq: 16 Aug 2018 18:04

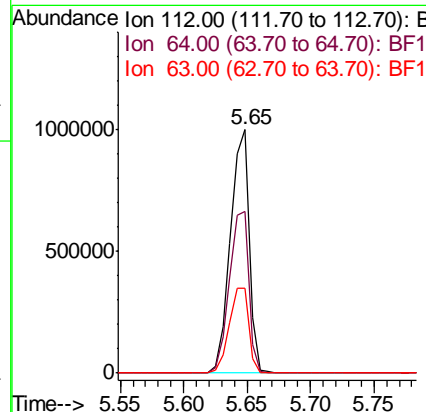
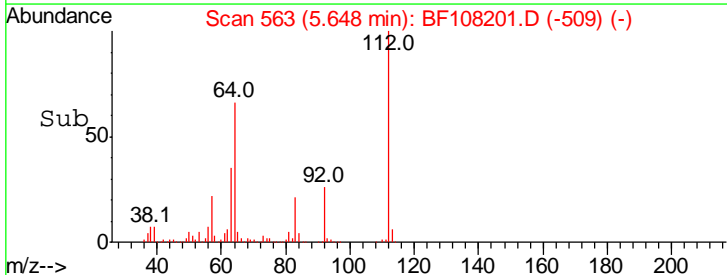
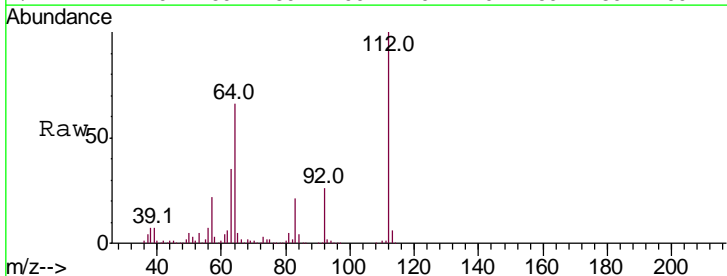
**Instrument :**  
 BNA\_F  
**ClientSampled :**  
 LSB-08(0-1)

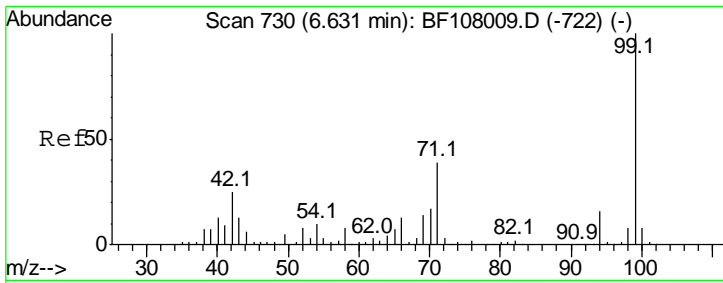
Tgt Ion	Resp	Lower	Upper
152	178131		
152	100		
150	158.1	124.6	186.8
115	61.9	50.1	75.1



#5  
 2-Fluorophenol  
 Concen: 104.868 ng  
 RT: 5.65 min Scan# 563  
 Delta R.T. 0.02 min  
 Lab File: BF108201.D  
 Acq: 16 Aug 2018 18:04

Tgt Ion	Resp	Lower	Upper
112	1031794		
112	100		
64	66.2	47.9	71.9
63	34.9	23.7	35.5



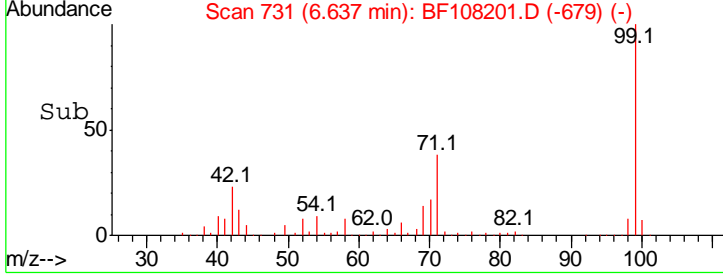
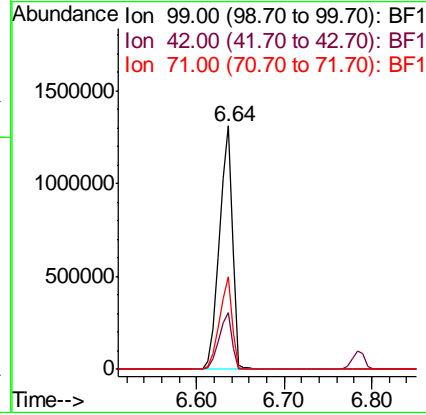
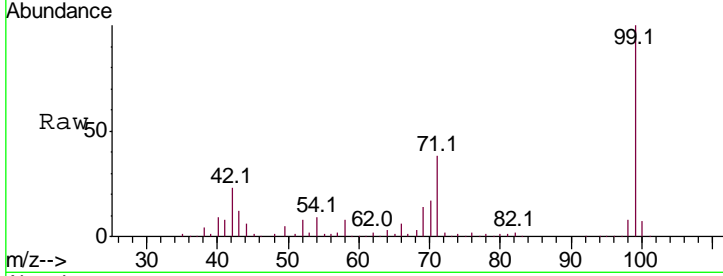


#7  
 Phenol-d6  
 Concen: 104.720 ng  
 RT: 6.64 min Scan# 731  
 Delta R.T. 0.01 min  
 Lab File: BF108201.D  
 Acq: 16 Aug 2018 18:04

**Instrument :**  
 BNA\_F  
**ClientSampled :**  
 LSB-08(0-1)

Tgt Ion: 99 Resp: 1369186

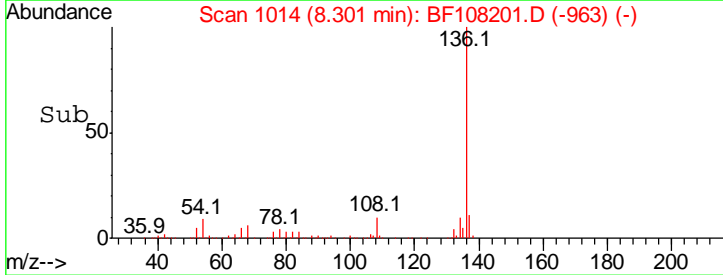
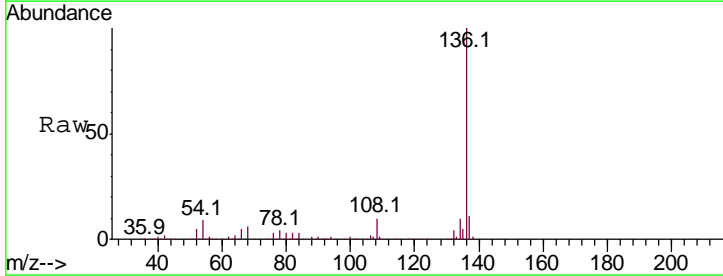
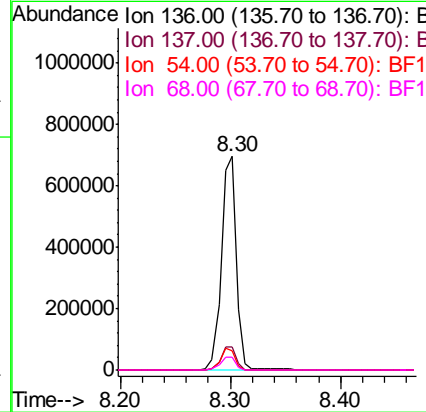
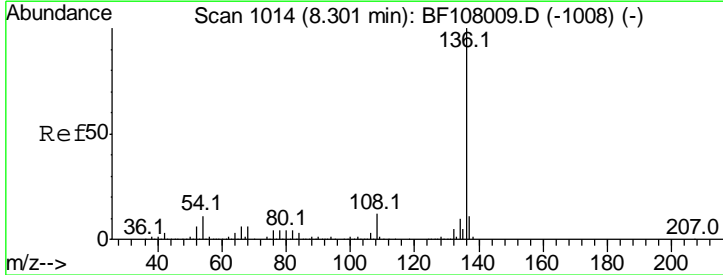
Ion	Ratio	Lower	Upper
99	100		
42	23.4	14.5	21.7#
71	37.8	25.4	38.0

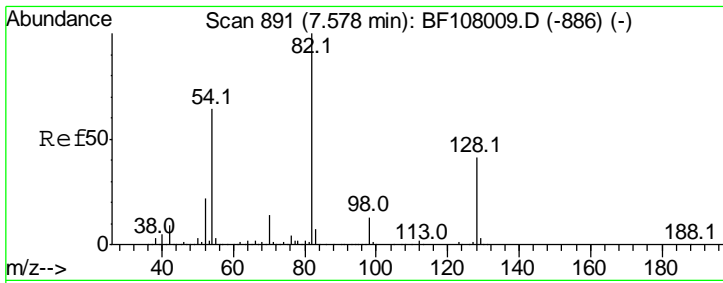


#21  
 Naphthalene-d8  
 Concen: 20.000 ng  
 RT: 8.30 min Scan# 1014  
 Delta R.T. 0.00 min  
 Lab File: BF108201.D  
 Acq: 16 Aug 2018 18:04

Tgt Ion: 136 Resp: 653281

Ion	Ratio	Lower	Upper
136	100		
137	10.6	8.9	13.3
54	8.9	6.6	9.8
68	5.9	5.0	7.4

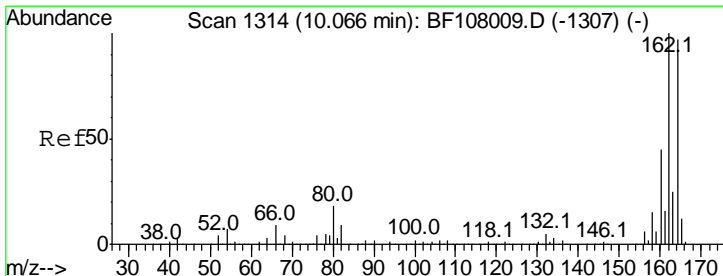
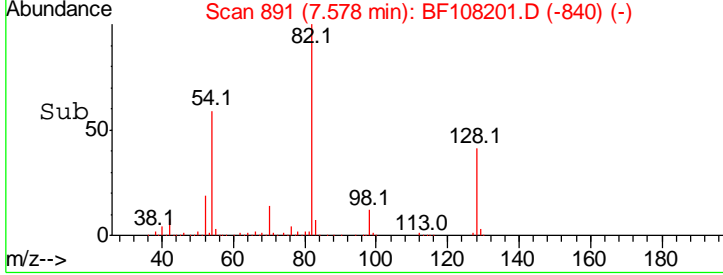
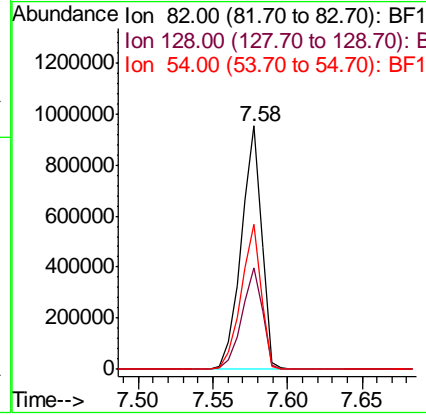
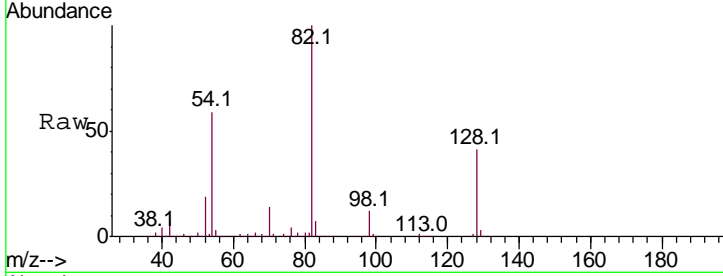




#23  
 Nitrobenzene-d5  
 Concen: 77.964 ng  
 RT: 7.58 min Scan# 891  
 Delta R.T. 0.00 min  
 Lab File: BF108201.D  
 Acq: 16 Aug 2018 18:04

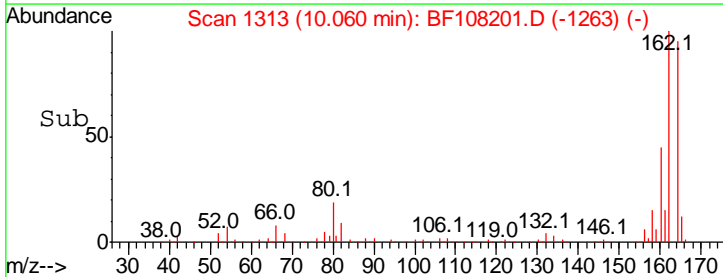
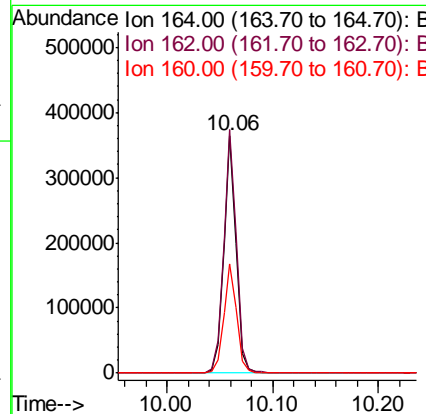
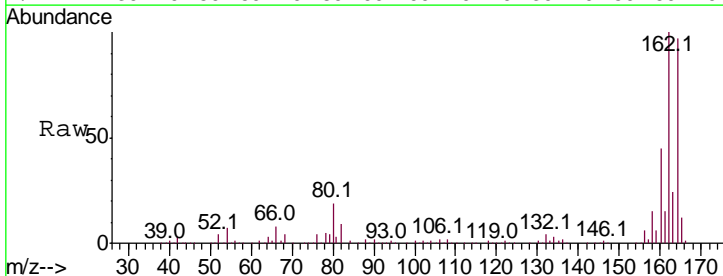
Instrument :  
 BNA\_F  
 ClientSampled :  
 LSB-08(0-1)

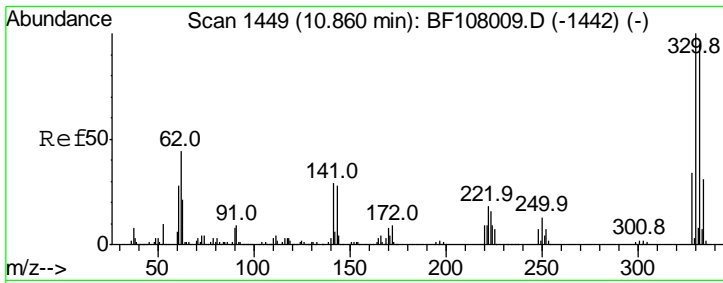
Tgt Ion	Resp	Lower	Upper
82	100		
128	41.5	36.1	54.1
54	59.4	41.4	62.2



#38  
 Acenaphthene-d10  
 Concen: 20.000 ng  
 RT: 10.06 min Scan# 1313  
 Delta R.T. -0.01 min  
 Lab File: BF108201.D  
 Acq: 16 Aug 2018 18:04

Tgt Ion	Resp	Lower	Upper
164	100		
162	102.6	86.1	129.1
160	45.9	38.3	57.5

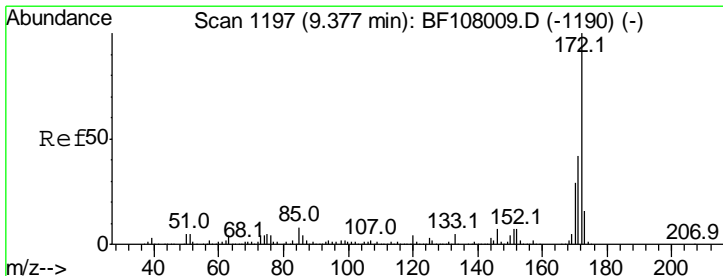
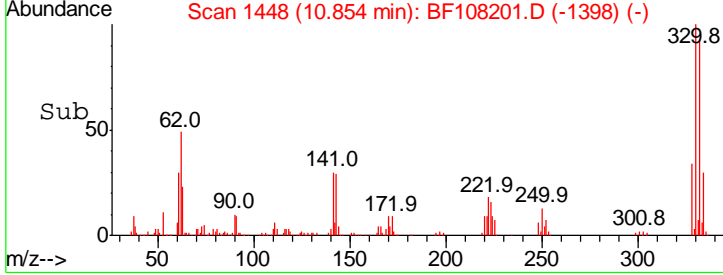
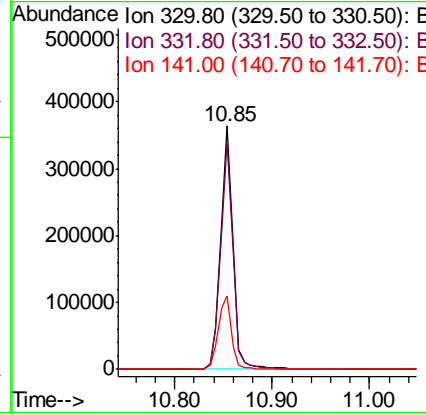
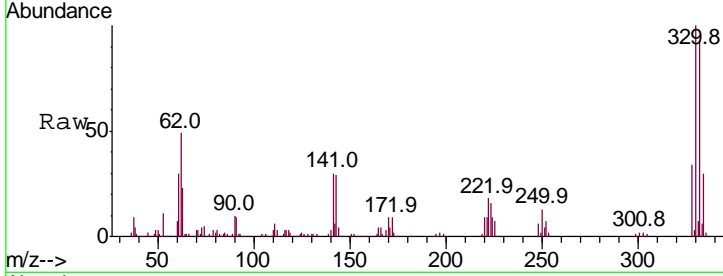




#41  
 2,4,6-Tribromophenol  
 Concen: 106.087 ng  
 RT: 10.85 min Scan# 1448  
 Delta R.T. -0.01 min  
 Lab File: BF108201.D  
 Acq: 16 Aug 2018 18:04

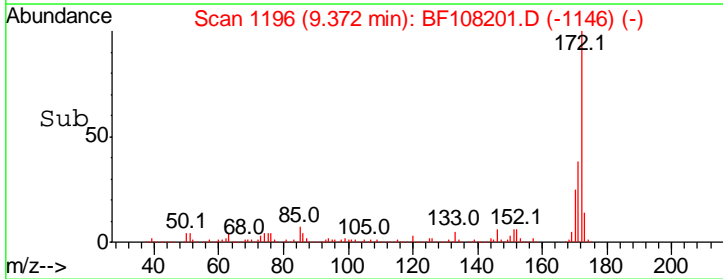
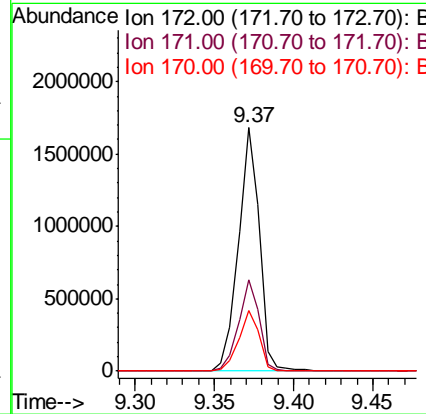
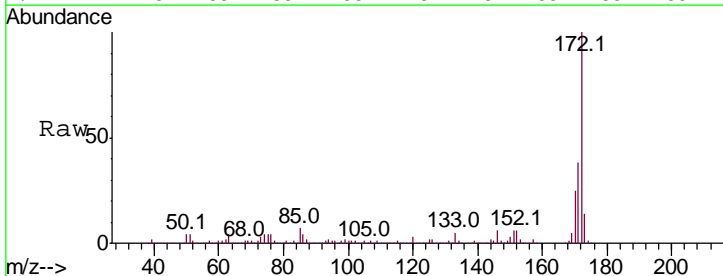
**Instrument :**  
 BNA\_F  
**ClientSampled :**  
 LSB-08(0-1)

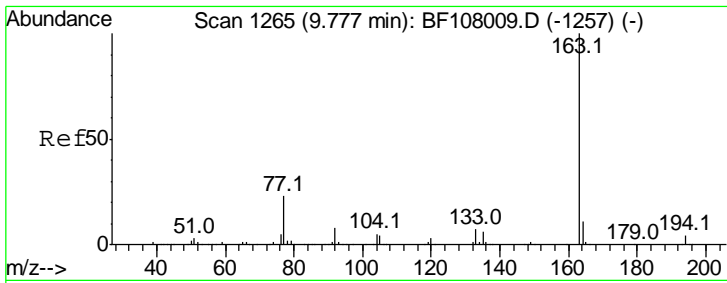
Tgt Ion	Resp	Lower	Upper
330	100		
332	93.9	77.0	115.6
141	32.5	29.9	44.9



#44  
 2-Fluorobiphenyl  
 Concen: 82.093 ng  
 RT: 9.37 min Scan# 1196  
 Delta R.T. -0.01 min  
 Lab File: BF108201.D  
 Acq: 16 Aug 2018 18:04

Tgt Ion	Resp	Lower	Upper
172	100		
171	37.5	29.7	44.5
170	25.0	19.6	29.4

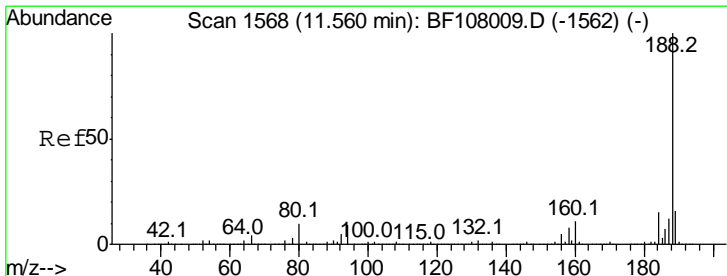
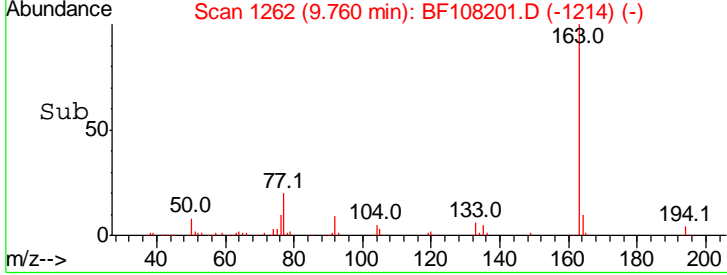
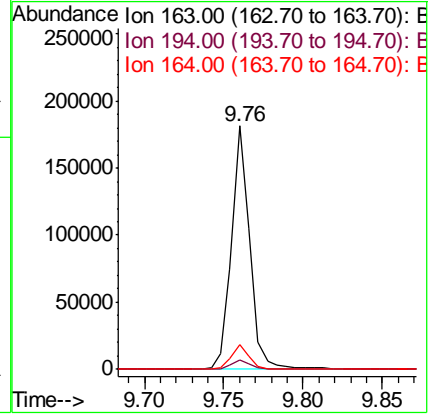
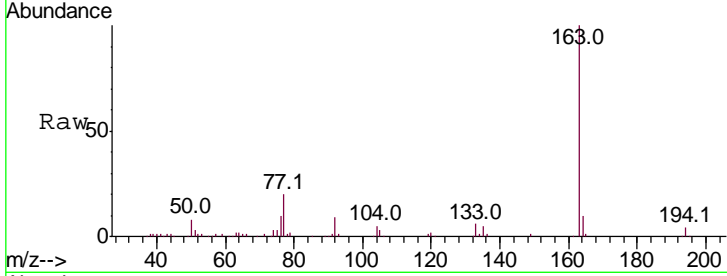




#49  
 Dimethylphthalate  
 Concen: 6.837 ng  
 RT: 9.76 min Scan# 1262  
 Delta R.T. -0.02 min  
 Lab File: BF108201.D  
 Acq: 16 Aug 2018 18:04

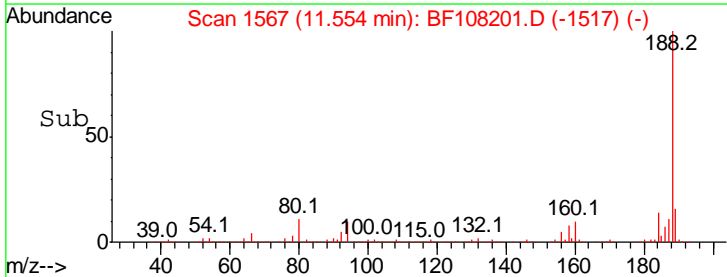
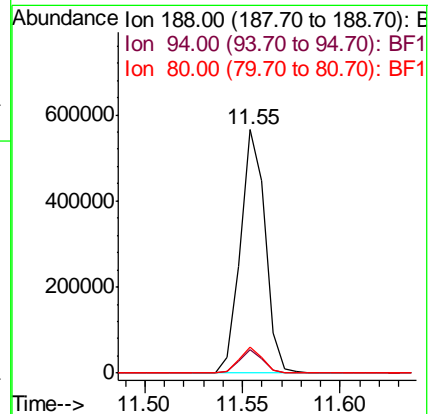
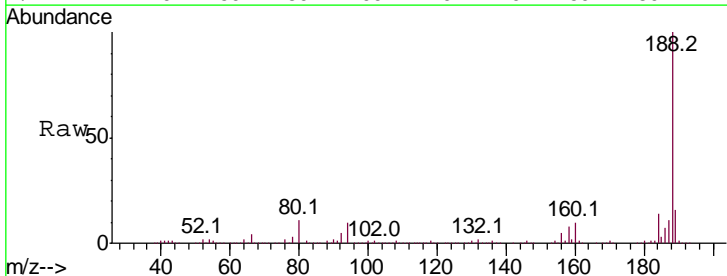
Instrument :  
 BNA\_F  
 ClientSampled :  
 LSB-08(0-1)

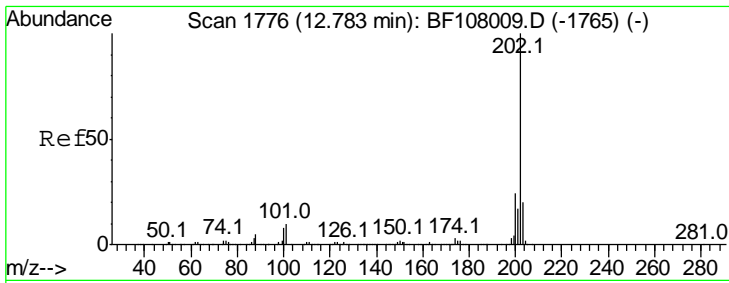
Tgt Ion	Resp	Lower	Upper
163	100		
194	4.1	2.7	4.1#
164	10.3	8.2	12.2



#63  
 Phenanthrene-d10  
 Concen: 20.000 ng  
 RT: 11.55 min Scan# 1567  
 Delta R.T. -0.01 min  
 Lab File: BF108201.D  
 Acq: 16 Aug 2018 18:04

Tgt Ion	Resp	Lower	Upper
188	100		
94	9.5	8.5	12.7
80	10.6	9.2	13.8

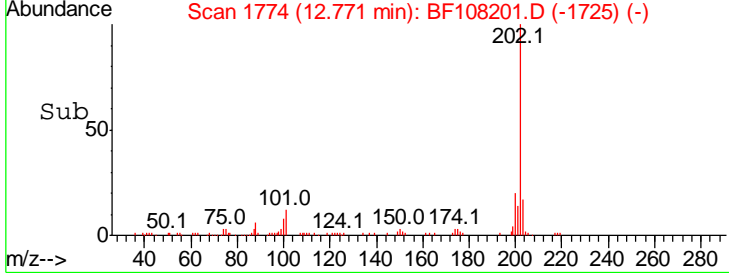
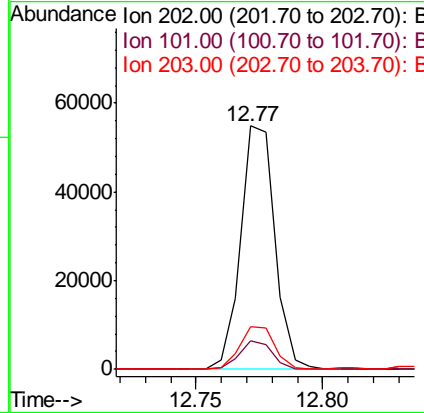
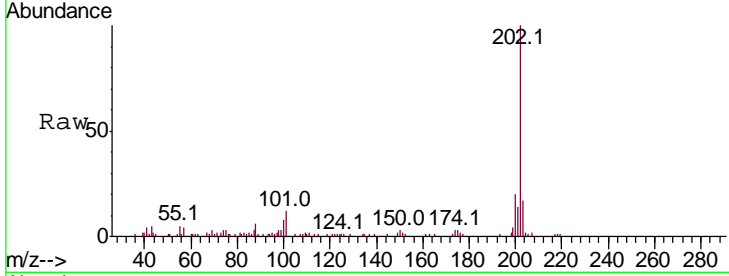




#74  
 Fluoranthene  
 Concen: 2.003 ng  
 RT: 12.77 min Scan# 1774  
 Delta R.T. -0.01 min  
 Lab File: BF108201.D  
 Acq: 16 Aug 2018 18:04

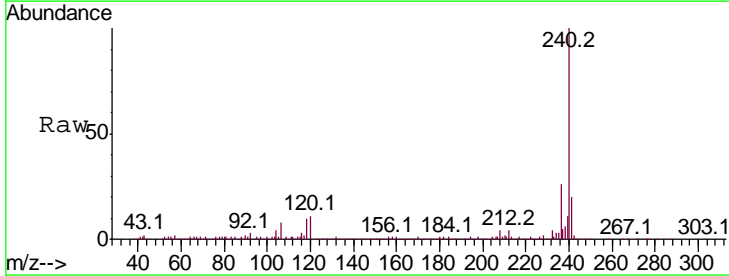
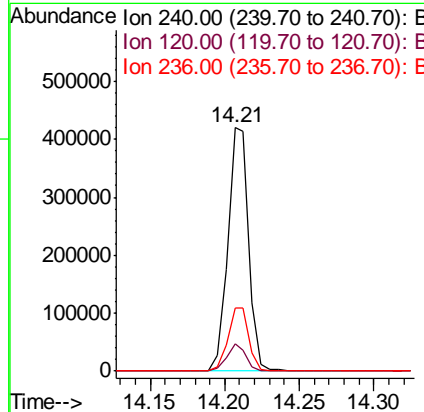
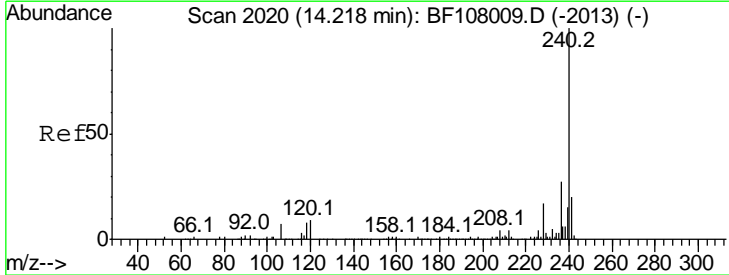
Instrument : BNA\_F  
 ClientSampleId : LSB-08(0-1)

Tgt Ion	Resp	Lower	Upper
202	51377		
101	11.6	0.0	34.1
203	17.4	0.0	38.1

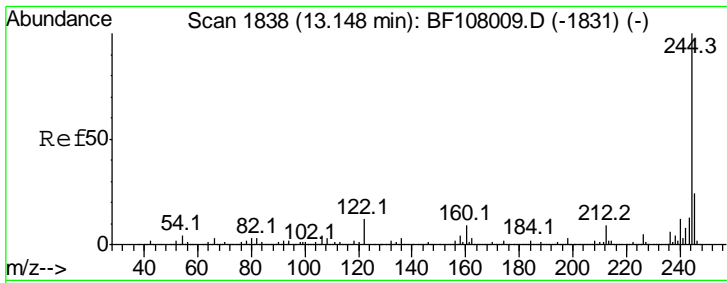


#75  
 Chrysene-d12  
 Concen: 20.000 ng  
 RT: 14.21 min Scan# 2018  
 Delta R.T. -0.01 min  
 Lab File: BF108201.D  
 Acq: 16 Aug 2018 18:04

Tgt Ion	Resp	Lower	Upper
240	415625		
120	11.0	9.5	14.3
236	25.8	20.7	31.1





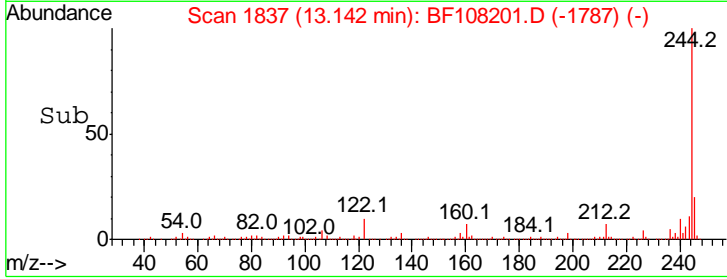
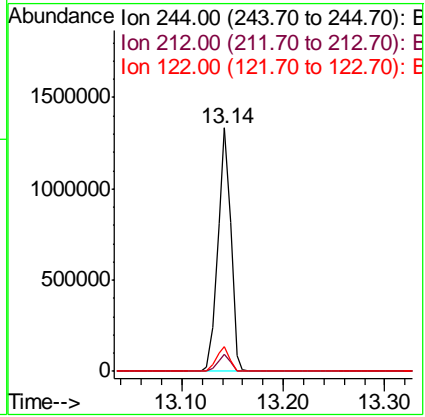
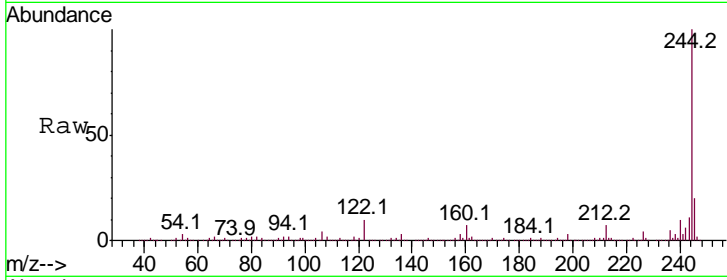


#78  
 Terphenyl-d14  
 Concen: 72.061 ng  
 RT: 13.14 min Scan# 1837  
 Delta R.T. -0.01 min  
 Lab File: BF108201.D  
 Acq: 16 Aug 2018 18:04

**Instrument :**  
 BNA\_F  
**ClientSampled :**  
 LSB-08(0-1)

Tgt Ion: 244 Resp: 1177958

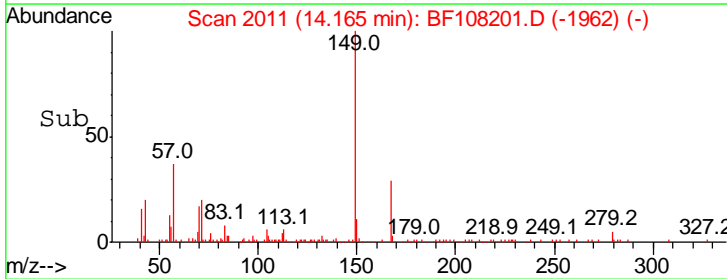
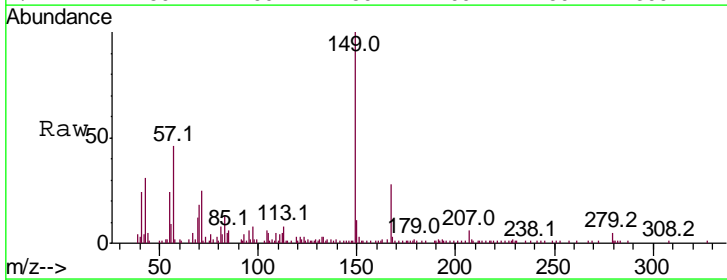
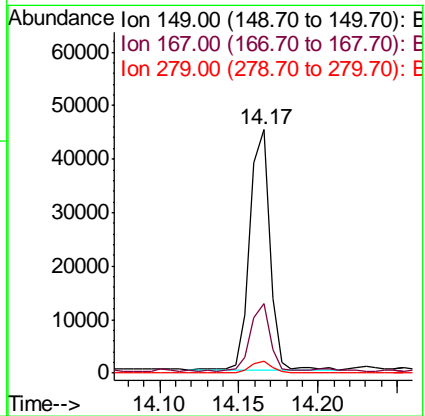
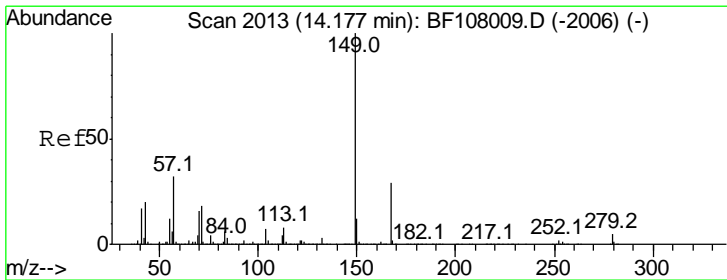
Ion	Ratio	Lower	Upper
244	100		
212	7.2	5.4	8.0
122	10.2	11.0	16.4#

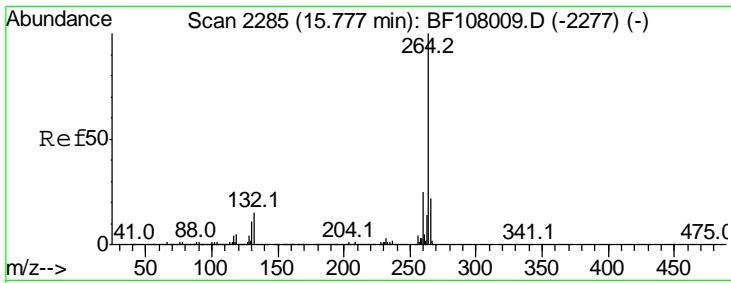


#83  
 Bis(2-ethylhexyl)phthalate  
 Concen: 2.803 ng  
 RT: 14.17 min Scan# 2011  
 Delta R.T. -0.01 min  
 Lab File: BF108201.D  
 Acq: 16 Aug 2018 18:04

Tgt Ion: 149 Resp: 39667

Ion	Ratio	Lower	Upper
149	100		
167	28.4	21.3	31.9
279	4.8	3.0	4.4#





#86  
 Perylene-d12  
 Concen: 20.000 ng  
 RT: 15.77 min Scan# 2284  
 Delta R.T. -0.01 min  
 Lab File: BF108201.D  
 Acq: 16 Aug 2018 18:04

Instrument :  
 BNA\_F  
 ClientSampled :  
 LSB-08(0-1)

Tot Ion: 264 Resp: 380413

Ion	Ratio	Lower	Upper
264	100		
260	23.8	19.2	28.8
265	21.1	17.5	26.3

