

Data Path : Z:\SVOASRV\HPCHEM1\BNA F\DATA\BF081619\
 Data File : BF116340.D
 Acq On : 17 Aug 2019 1:38
 Operator : HP/JU
 Sample : K4228-12
 Misc :
 ALS Vial : 17 Sample Multiplier: 1

Instrument :
 BNA_F
 ClientSampleId :
 2S-11-14-COMP-(0-1)

Integration Parameters: rteint.p
 Integrator: RTE
 Smoothing : ON Filtering: 5
 Sampling : 1 Min Area: 3 % of largest Peak
 Start Thrs: 0.2 Max Peaks: 100
 Stop Thrs : 0 Peak Location: TOP

If leading or trailing edge < 100 prefer < Baseline drop else tangent >
 Peak separation: 5

Method : Z:\SVOASRV\HPCHEM1\BNA F\METHODS\8270-BF073019.M
 Title : ASP BNA STANDARDS FOR 5 POINT CALIBRATION

Signal : TIC

peak #	R.T. min	first scan	max scan	last scan	PK TY	peak height	corr. area	corr. % max.	% of total
1	2.116	3	5	22	rVB	1372003	1534815	31.23%	2.013%
2	5.451	568	572	604	rBV	2158551	2703904	55.01%	3.546%
3	6.463	740	744	762	rBV	2438059	2901101	59.03%	3.805%
4	6.592	762	766	781	rVB	3080774	2829171	57.56%	3.711%
5	6.816	801	804	814	rBV	963682	862224	17.54%	1.131%
6	6.975	827	831	849	rBV	2293020	2251727	45.81%	2.953%
7	7.380	896	900	919	rBV	1816251	1824386	37.12%	2.393%
8	8.098	1018	1022	1048	rBV	1132646	1160296	23.61%	1.522%
9	9.169	1200	1204	1215	rBV	3333735	2985708	60.75%	3.916%
10	9.563	1269	1271	1278	rVB	218104	194300	3.95%	0.255%
11	9.845	1316	1319	1322	rBV	1275398	1200398	24.42%	1.574%
12	9.880	1322	1325	1334	rVB	789030	680349	13.84%	0.892%
13	10.057	1349	1355	1359	rBV	302068	289446	5.89%	0.380%
14	10.398	1407	1413	1418	rBV	547007	540413	11.00%	0.709%
15	10.480	1426	1427	1430	rVV	126704	111676	2.27%	0.146%
16	10.557	1437	1440	1444	rVB	161017	167044	3.40%	0.219%
17	10.639	1451	1454	1461	rBV	1847551	1857355	37.79%	2.436%
18	10.763	1468	1475	1481	rVB5	78671	150729	3.07%	0.198%
19	10.945	1500	1506	1509	rVV3	171772	275769	5.61%	0.362%
20	10.974	1509	1511	1514	rVV2	163262	159090	3.24%	0.209%
21	11.074	1526	1528	1530	rVV	124259	147223	3.00%	0.193%
22	11.092	1530	1531	1537	rVV	122464	147109	2.99%	0.193%
23	11.151	1537	1541	1544	rVV2	162187	195180	3.97%	0.256%
24	11.192	1544	1548	1551	rVV3	209472	265648	5.40%	0.348%
25	11.233	1552	1555	1560	rVB	334748	344059	7.00%	0.451%
26	11.339	1569	1573	1574	rBV	1230213	1115876	22.70%	1.464%
27	11.363	1574	1577	1581	rVV	3944295	4093822	83.29%	5.369%
28	11.416	1581	1586	1589	rVV	1414963	1451482	29.53%	1.904%
29	11.457	1590	1593	1597	rVV2	152479	222420	4.53%	0.292%
30	11.568	1609	1612	1618	rBV2	523622	606505	12.34%	0.795%
31	11.621	1618	1621	1624	rVV2	144192	165312	3.36%	0.217%
32	11.668	1624	1629	1630	rVV4	97408	143234	2.91%	0.188%
33	11.839	1654	1658	1660	rBV	607871	558556	11.36%	0.733%
34	11.868	1660	1663	1667	rVB	832723	792081	16.12%	1.039%

Data Path : Z:\SVOASRV\HPCHEM1\BNA F\DATA\BF081619\
 Data File : BF116340.D
 Acq On : 17 Aug 2019 1:38
 Operator : HP/JU
 Sample : K4228-12
 Misc :
 ALS Vial : 17 Sample Multiplier: 1

Instrument :
 BNA_F
 ClientSampleId :
 2S-11-14-COMP-(0-1)

Integration Parameters: rteint.p
 Integrator: RTE
 Smoothing : ON
 Sampling : 1
 Start Thrs: 0.2
 Stop Thrs : 0

Filtering: 5
 Min Area: 3 % of largest Peak
 Max Peaks: 100
 Peak Location: TOP

If leading or trailing edge < 100 prefer < Baseline drop else tangent >
 Peak separation: 5

Method : Z:\SVOASRV\HPCHEM1\BNA F\METHODS\8270-BF073019.M
 Title : ASP BNA STANDARDS FOR 5 POINT CALIBRATION

35	11.916	1667	1671	1673	rBV	325985	288061	5.86%	0.378%
36	11.951	1673	1677	1679	rVV2	1019562	1061299	21.59%	1.392%
37	11.974	1679	1681	1686	rVB	435714	391186	7.96%	0.513%
38	12.021	1686	1689	1692	rBV4	119727	135883	2.76%	0.178%
39	12.127	1704	1707	1712	rBV	460151	446010	9.07%	0.585%
40	12.174	1712	1715	1718	rVB	308792	289775	5.90%	0.380%
41	12.280	1728	1733	1736	rBV2	172850	201697	4.10%	0.265%
42	12.386	1748	1751	1754	rBV	420089	410952	8.36%	0.539%
43	12.486	1763	1768	1771	rVV2	198153	247618	5.04%	0.325%
44	12.557	1775	1780	1783	rBV	4291886	4631937	94.24%	6.075%
45	12.615	1788	1790	1793	rVB2	133673	129327	2.63%	0.170%
46	12.704	1801	1805	1807	rBV2	272678	253944	5.17%	0.333%
47	12.786	1812	1819	1822	rBV2	3788146	4914877	100.00%	6.446%
48	12.833	1824	1827	1831	rVB2	271112	297834	6.06%	0.391%
49	12.915	1834	1841	1844	rBV2	2664392	2650878	53.94%	3.477%
50	12.945	1844	1846	1851	rVB	236042	263770	5.37%	0.346%
51	13.004	1851	1856	1859	rBV2	277515	501017	10.19%	0.657%
52	13.086	1866	1870	1871	rBV2	204208	222894	4.54%	0.292%
53	13.110	1871	1874	1877	rVB	638488	588666	11.98%	0.772%
54	13.174	1882	1885	1888	rBV	484542	382217	7.78%	0.501%
55	13.215	1888	1892	1899	rVB3	353472	578688	11.77%	0.759%
56	13.268	1899	1901	1904	rVB2	113048	103052	2.10%	0.135%
57	13.304	1904	1907	1910	rBV	206566	201850	4.11%	0.265%
58	13.339	1910	1913	1916	rBV2	214954	227119	4.62%	0.298%
59	13.627	1959	1962	1965	rVV	272118	269174	5.48%	0.353%
60	13.733	1974	1980	1981	rBV2	367148	402828	8.20%	0.528%
61	13.751	1981	1983	1986	rVV	407865	355530	7.23%	0.466%
62	13.780	1986	1988	1990	rVV	320471	336160	6.84%	0.441%
63	13.798	1990	1991	1995	rVV3	351751	415828	8.46%	0.545%
64	13.833	1995	1997	2003	rVB	377107	418696	8.52%	0.549%
65	13.898	2003	2008	2013	rBV	118371	206542	4.20%	0.271%
66	13.974	2013	2021	2024	rVV2	2385411	3562774	72.49%	4.673%
67	14.009	2024	2027	2030	rVV	1937436	1919225	39.05%	2.517%
68	14.086	2037	2040	2043	rVB	546188	468954	9.54%	0.615%
69	14.139	2047	2049	2053	rVV3	103283	165922	3.38%	0.218%
70	14.174	2053	2055	2057	rVV	173574	151271	3.08%	0.198%
71	14.209	2057	2061	2064	rVB2	235020	289268	5.89%	0.379%

Data Path : Z:\SVOASRV\HPCHEM1\BNA F\DATA\BF081619\
 Data File : BF116340.D
 Acq On : 17 Aug 2019 1:38
 Operator : HP/JU
 Sample : K4228-12
 Misc :
 ALS Vial : 17 Sample Multiplier: 1

Instrument :
 BNA_F
 ClientSampleId :
 2S-11-14-COMP-(0-1)

Integration Parameters: rteint.p
 Integrator: RTE
 Smoothing : ON
 Sampling : 1
 Start Thrs: 0.2
 Stop Thrs : 0

Filtering: 5
 Min Area: 3 % of largest Peak
 Max Peaks: 100
 Peak Location: TOP

If leading or trailing edge < 100 prefer < Baseline drop else tangent >
 Peak separation: 5

Method : Z:\SVOASRV\HPCHEM1\BNA F\METHODS\8270-BF073019.M
 Title : ASP BNA STANDARDS FOR 5 POINT CALIBRATION

72	14.327	2079	2081	2083	rBV	121495	118987	2.42%	0.156%
73	14.368	2083	2088	2090	rVV	343847	402074	8.18%	0.527%
74	14.398	2090	2093	2096	rVV2	153887	148784	3.03%	0.195%
75	14.462	2102	2104	2107	rVB	118165	103909	2.11%	0.136%
76	14.492	2107	2109	2110	rBV2	168800	130577	2.66%	0.171%
77	14.509	2110	2112	2115	rVB2	213429	198477	4.04%	0.260%
78	14.692	2139	2143	2151	rVV4	208364	367713	7.48%	0.482%
79	14.798	2156	2161	2164	rVB2	120005	175111	3.56%	0.230%
80	14.862	2169	2172	2176	rBV	174247	195063	3.97%	0.256%
81	15.021	2194	2199	2201	rBV	1634502	2311972	47.04%	3.032%
82	15.127	2213	2217	2221	rVB	298714	323208	6.58%	0.424%
83	15.209	2228	2231	2232	rBV2	108009	109711	2.23%	0.144%
84	15.256	2236	2239	2244	rVV2	117349	247763	5.04%	0.325%
85	15.315	2245	2249	2256	rVV	932042	1187540	24.16%	1.558%
86	15.380	2256	2260	2266	rVV	1439065	1792081	36.46%	2.350%
87	15.439	2266	2270	2273	rVV	709891	871324	17.73%	1.143%
88	15.468	2273	2275	2282	rVB2	385083	539012	10.97%	0.707%
89	15.609	2295	2299	2303	rBV2	81430	133353	2.71%	0.175%
90	15.662	2303	2308	2316	rVB3	99514	219698	4.47%	0.288%
91	15.998	2362	2365	2370	rVB	84228	107186	2.18%	0.141%
92	16.327	2417	2421	2428	rVB5	66810	129045	2.63%	0.169%
93	16.703	2479	2485	2488	rBV2	91160	156739	3.19%	0.206%
94	16.745	2488	2492	2497	rVB	72400	119854	2.44%	0.157%
95	16.903	2512	2519	2527	rBV	594339	1173868	23.88%	1.540%
96	16.974	2528	2531	2539	rVB	58114	105308	2.14%	0.138%
97	17.068	2542	2547	2553	rBV	141508	266450	5.42%	0.349%
98	17.127	2553	2557	2565	rVB2	97256	191418	3.89%	0.251%
99	17.345	2588	2594	2605	rVB	383245	835680	17.00%	1.096%
100	17.597	2632	2637	2651	rVB	105699	272776	5.55%	0.358%

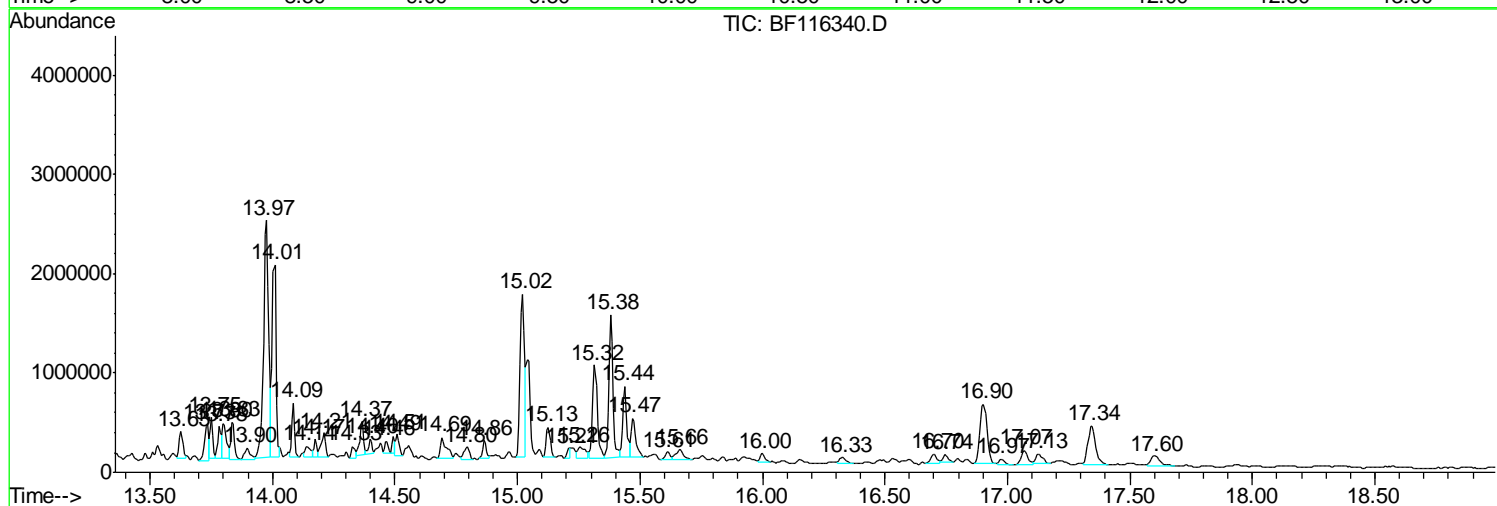
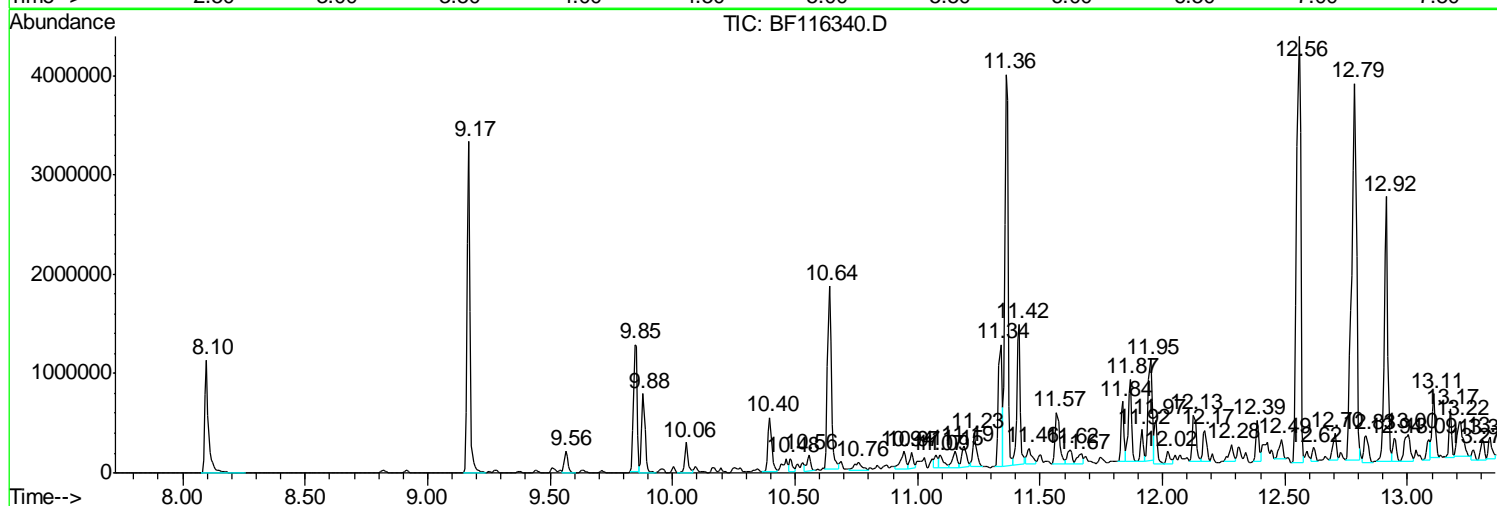
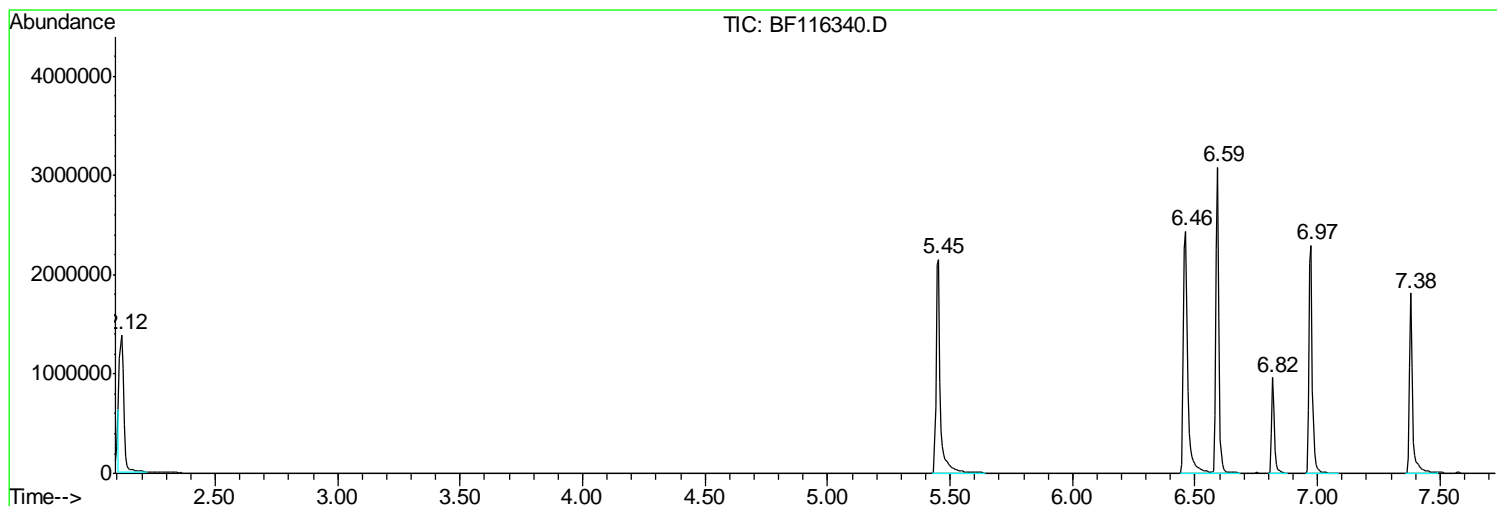
Sum of corrected areas: 76245812

Data Path : Z:\SVOASRV\HPCHEM1\BNA F\DATA\BF081619\
 Data File : BF116340.D
 Acq On : 17 Aug 2019 1:38
 Operator : HP/JU
 Sample : K4228-12
 Misc :
 ALS Vial : 17 Sample Multiplier: 1

Instrument :
 BNA_F
Client Sampled :
 2S-11-14-COMP-(0-1)

Quant Method : Z:\SVOASRV\HPCHEM1\BNA F\METHODS\8270-BF073019.M
 Quant Title : ASP BNA STANDARDS FOR 5 POINT CALIBRATION

TIC Library : C:\DATABASE\NIST11.L
 TIC Integration Parameters: LSCINT.P



Data Path : Z:\SVOASRV\HPCHEM1\BNA F\DATA\BF081619\
 Data File : BF116340.D
 Acq On : 17 Aug 2019 1:38
 Operator : HP/JU
 Sample : K4228-12
 Misc :
 ALS Vial : 17 Sample Multiplier: 1

Instrument :
 BNA_F
 ClientSampleID :
 2S-11-14-COMP-(0-1)

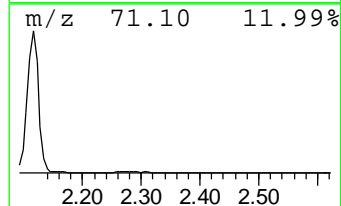
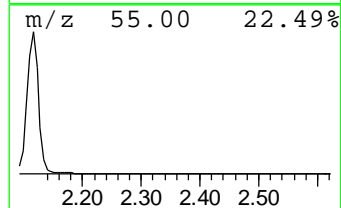
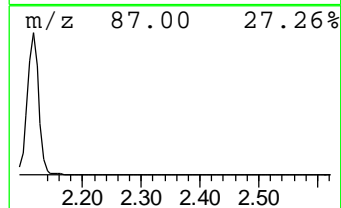
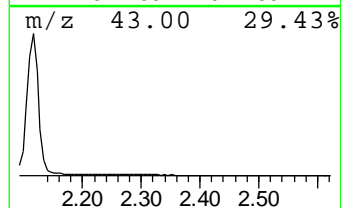
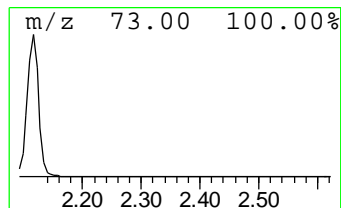
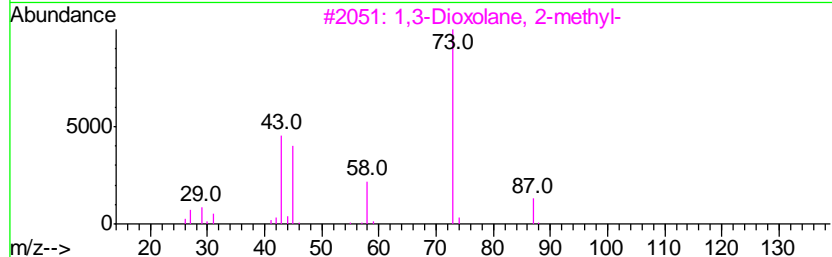
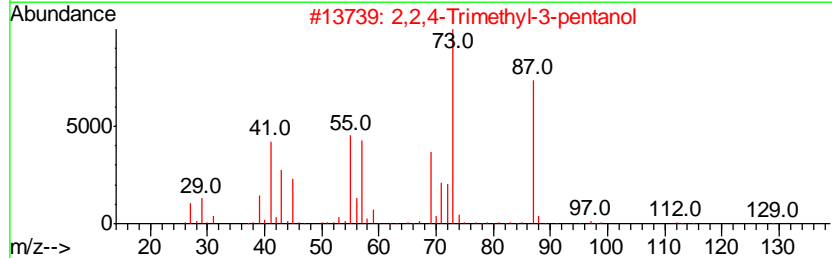
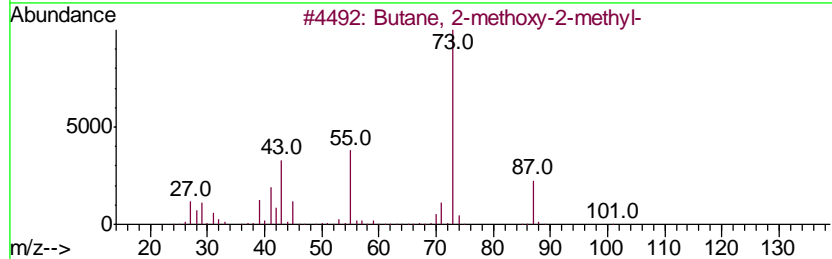
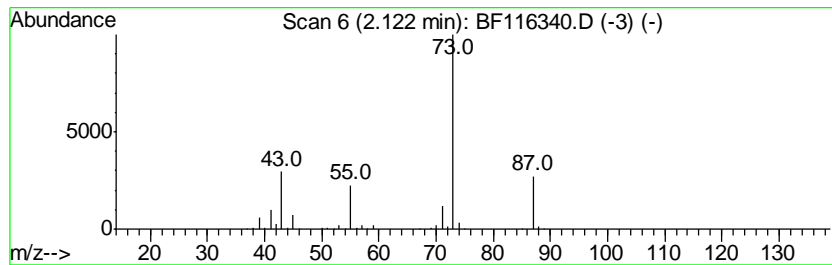
Quant Method : Z:\SVOASRV\HPCHEM1\BNA F\METHODS\8270-BF073019.M
 Quant Title : ASP BNA STANDARDS FOR 5 POINT CALIBRATION

TIC Library : C:\DATABASE\NIST11.L
 TIC Integration Parameters: LSCINT.P

 Peak Number 1 Butane, 2-methoxy-2-methyl- Concentration Rank 3

R.T.	EstConc	Area	Relative to ISTD	R.T.
2.12	35.60 ng	1534820	1,4-Dichlorobenzene-d4	6.82

Hit#	of	Tentative ID	MW	MolForm	CAS#	Qual
1	5	Butane, 2-methoxy-2-methyl-	102	C6H14O	000994-05-8	83
2		2,2,4-Trimethyl-3-pentanol	130	C8H18O	005162-48-1	39
3		1,3-Dioxolane, 2-methyl-	88	C4H8O2	000497-26-7	25
4		Pentane, 3-methoxy-	102	C6H14O	036839-67-5	23
5		Silane, tetramethyl-	88	C4H12Si	000075-76-3	17



Data Path : Z:\SVOASRV\HPCHEM1\BNA F\DATA\BF081619\
 Data File : BF116340.D
 Acq On : 17 Aug 2019 1:38
 Operator : HP/JU
 Sample : K4228-12
 Misc :
 ALS Vial : 17 Sample Multiplier: 1

Instrument :
 BNA_F
 ClientSampleID :
 2S-11-14-COMP-(0-1)

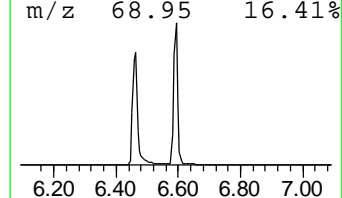
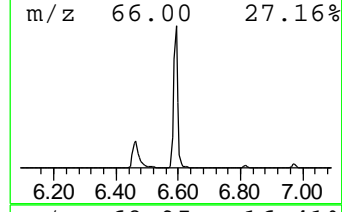
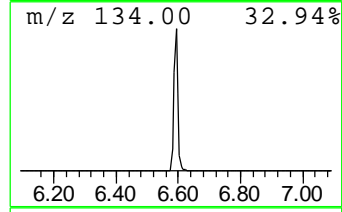
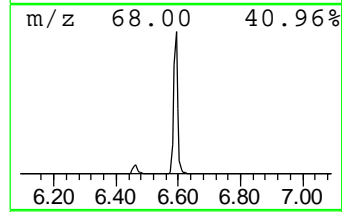
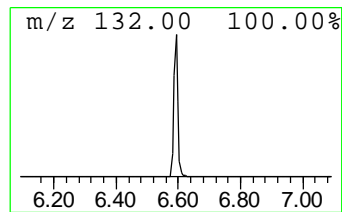
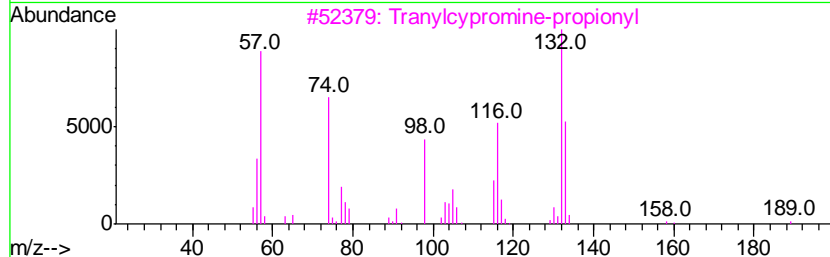
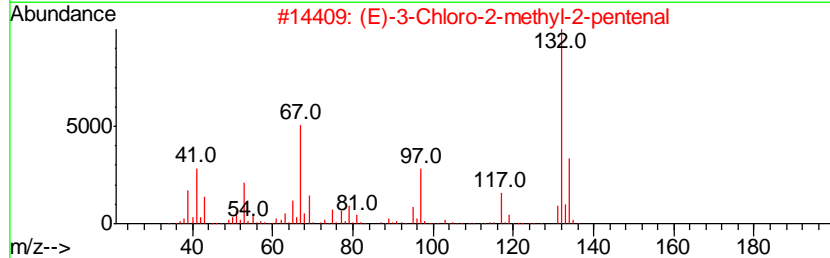
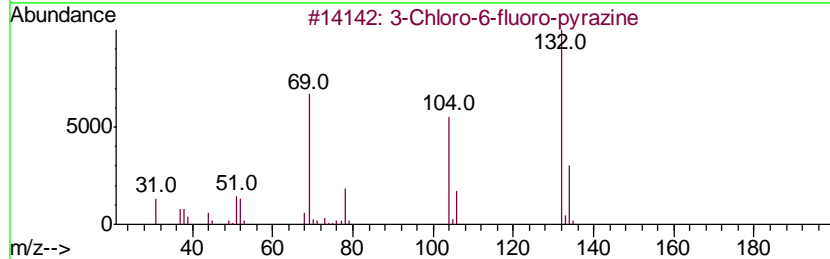
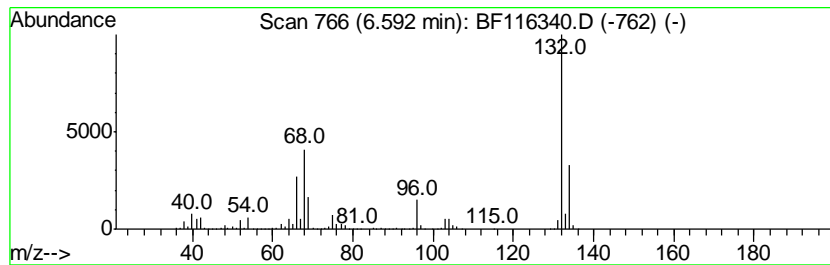
Quant Method : Z:\SVOASRV\HPCHEM1\BNA F\METHODS\8270-BF073019.M
 Quant Title : ASP BNA STANDARDS FOR 5 POINT CALIBRATION

TIC Library : C:\DATABASE\NIST11.L
 TIC Integration Parameters: LSCINT.P

 Peak Number 2 unknown6.59 Concentration Rank 1

R.T.	EstConc	Area	Relative to ISTD	R.T.
6.59	65.63 ng	2829170	1,4-Dichlorobenzene-d4	6.82

Hit#	of	Tentative ID	MW	MolForm	CAS#	Qual
1	5	3-Chloro-6-fluoro-pyrazine	132	C4H2ClFN2	1000146-10-7	27
2		(E)-3-Chloro-2-methyl-2-pentenal	132	C6H9ClO	031357-76-3	16
3		Tranlycypromine-propionyl	189	C12H15NO	1000123-86-3	12
4		Bicyclo[4.2.0]octa-1,3,5-triene,...	132	C10H12	028749-81-7	9
5		Benzene, 1-ethenyl-3,5-dimethyl-	132	C10H12	005379-20-4	9



Data Path : Z:\SVOASRV\HPCHEM1\BNA F\DATA\BF081619\
 Data File : BF116340.D
 Acq On : 17 Aug 2019 1:38
 Operator : HP/JU
 Sample : K4228-12
 Misc :
 ALS Vial : 17 Sample Multiplier: 1

Instrument :
 BNA_F
 ClientSampleID :
 2S-11-14-COMP-(0-1)

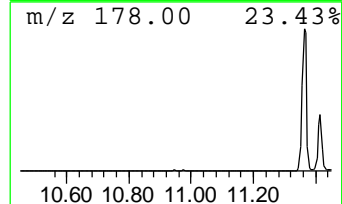
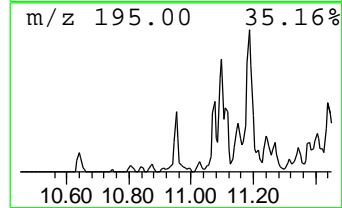
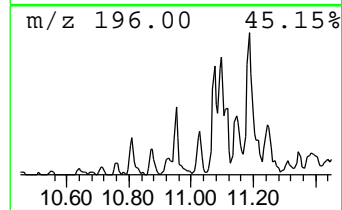
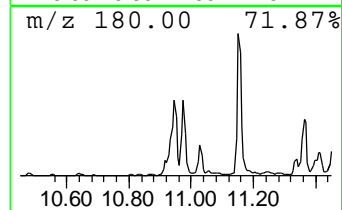
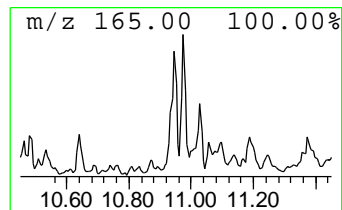
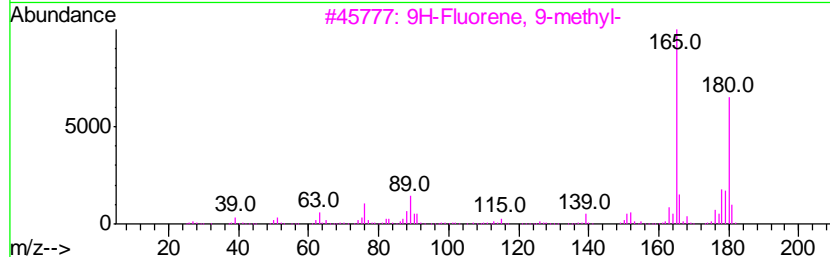
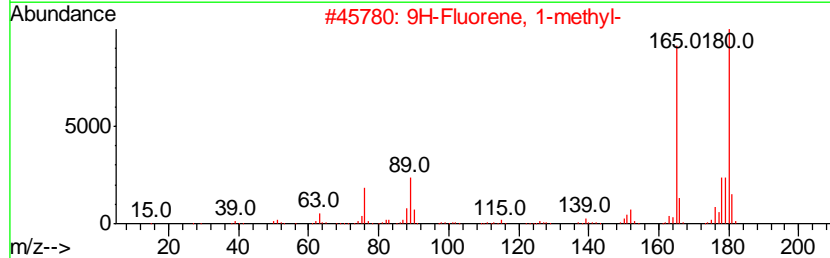
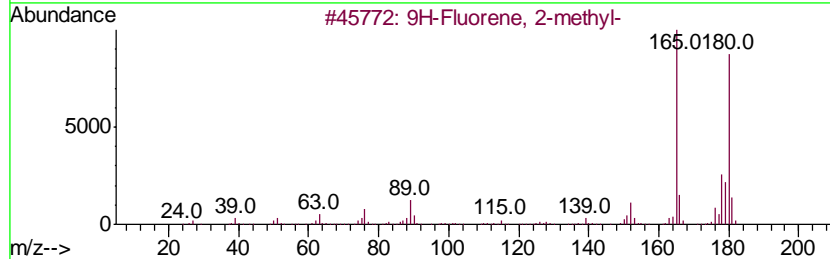
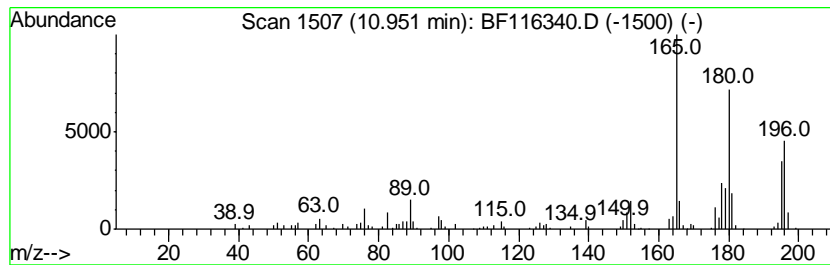
Quant Method : Z:\SVOASRV\HPCHEM1\BNA F\METHODS\8270-BF073019.M
 Quant Title : ASP BNA STANDARDS FOR 5 POINT CALIBRATION

TIC Library : C:\DATABASE\NIST11.L
 TIC Integration Parameters: LSCINT.P

 Peak Number 4 9H-Fluorene, 2-methyl- Concentration Rank 19

R.T.	EstConc	Area	Relative to ISTD	R.T.
10.95	4.94 ng	275769	Phenanthrene-d10	11.34

Hit#	of	Tentative ID	MW	MolForm	CAS#	Qual
1	5	9H-Fluorene, 2-methyl-	180	C14H12	001430-97-3	96
2		9H-Fluorene, 1-methyl-	180	C14H12	001730-37-6	89
3		9H-Fluorene, 9-methyl-	180	C14H12	002523-37-7	89
4		9H-Fluorene, 3-methyl-	180	C14H12	002523-39-9	86
5		9H-Fluorene, 4-methyl-	180	C14H12	001556-99-6	68



Data Path : Z:\SVOASRV\HPCHEM1\BNA F\DATA\BF081619\
 Data File : BF116340.D
 Acq On : 17 Aug 2019 1:38
 Operator : HP/JU
 Sample : K4228-12
 Misc :
 ALS Vial : 17 Sample Multiplier: 1

Instrument :
 BNA_F
 ClientSampleID :
 2S-11-14-COMP-(0-1)

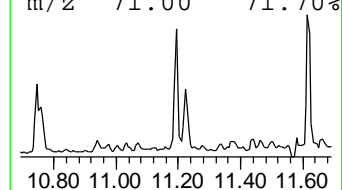
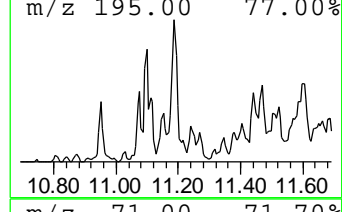
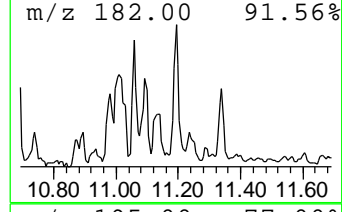
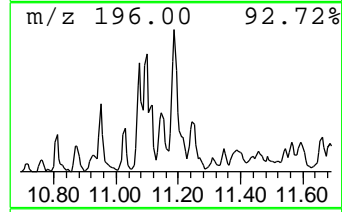
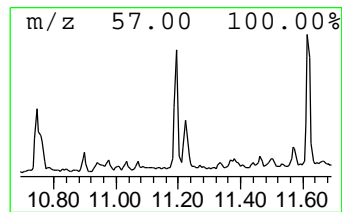
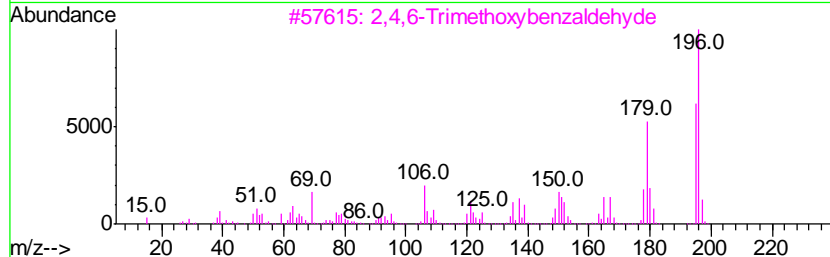
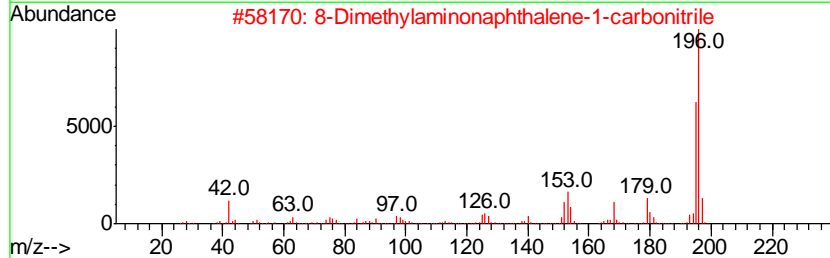
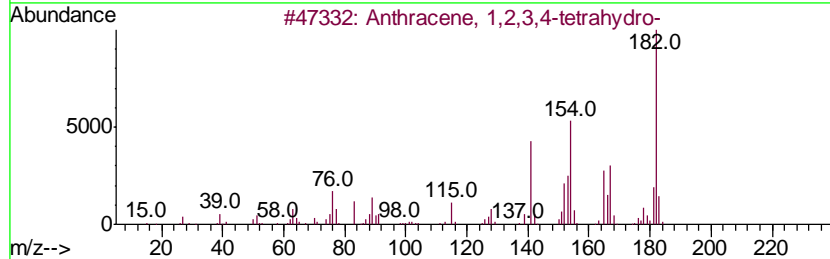
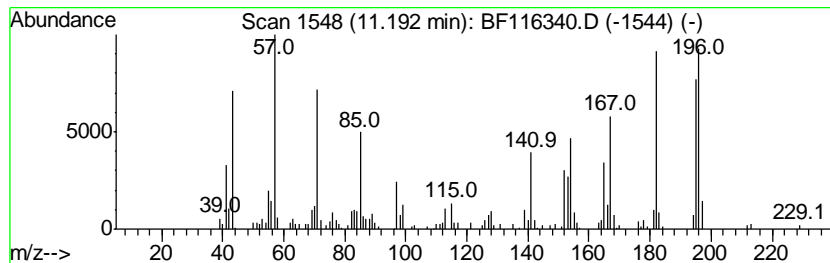
Quant Method : Z:\SVOASRV\HPCHEM1\BNA F\METHODS\8270-BF073019.M
 Quant Title : ASP BNA STANDARDS FOR 5 POINT CALIBRATION

TIC Library : C:\DATABASE\NIST11.L
 TIC Integration Parameters: LSCINT.P

 Peak Number 5 unknown11.19 Concentration Rank 20

R.T.	EstConc	Area	Relative to ISTD	R.T.
11.19	4.76 ng	265648	Phenanthrene-d10	11.34

Hit#	of	Tentative ID	MW	MolForm	CAS#	Qual
1	5	Anthracene, 1,2,3,4-tetrahydro-	182	C14H14	002141-42-6	43
2		8-Dimethylaminonaphthalene-1-car...	196	C13H12N2	128644-69-9	30
3		2,4,6-Trimethoxybenzaldehyde	196	C10H12O4	000830-79-5	25
4		4-Hydroxy-9-fluorenone	196	C13H8O2	001986-00-1	25
5		Phenol, 3-(2-phenylethenyl)-, (E)-	196	C14H12O	017861-18-6	25



Data Path : Z:\SVOASRV\HPCHEM1\BNA F\DATA\BF081619\
 Data File : BF116340.D
 Acq On : 17 Aug 2019 1:38
 Operator : HP/JU
 Sample : K4228-12
 Misc :
 ALS Vial : 17 Sample Multiplier: 1

Instrument :
 BNA_F
 ClientSampleID :
 2S-11-14-COMP-(0-1)

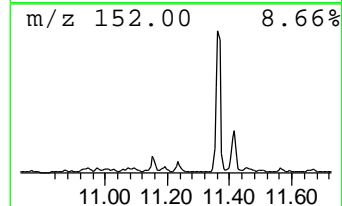
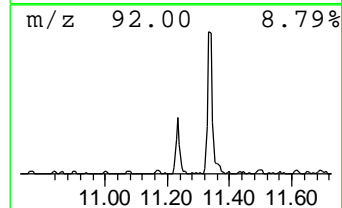
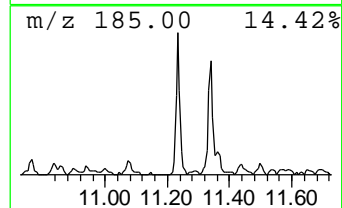
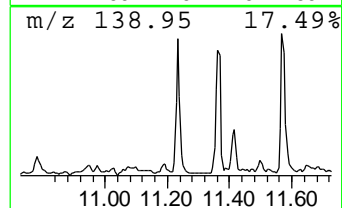
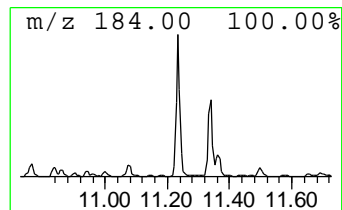
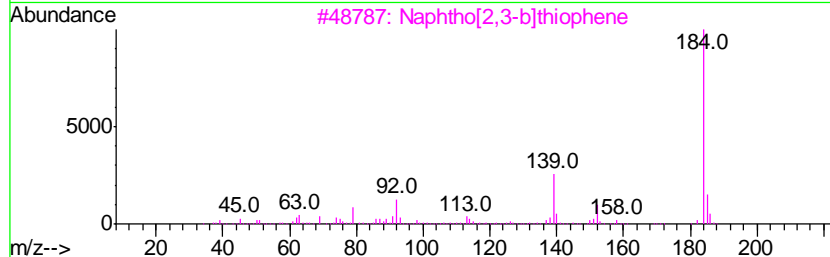
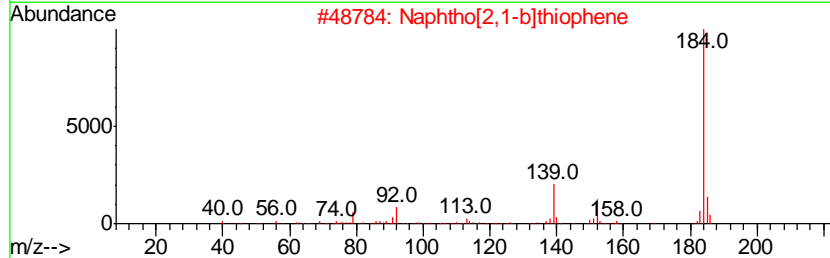
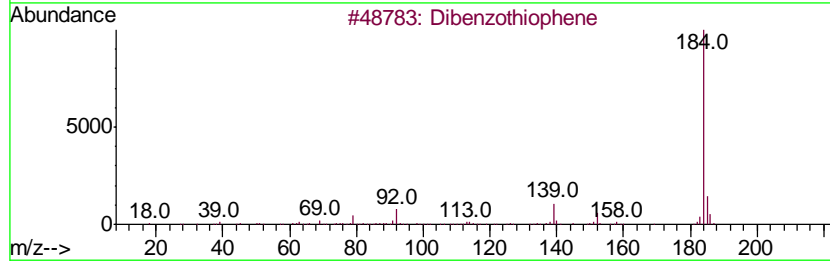
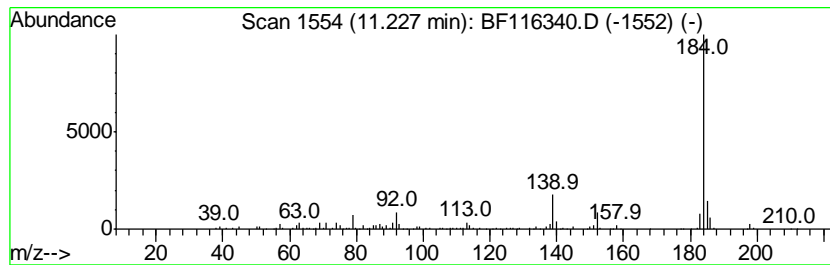
Quant Method : Z:\SVOASRV\HPCHEM1\BNA F\METHODS\8270-BF073019.M
 Quant Title : ASP BNA STANDARDS FOR 5 POINT CALIBRATION

TIC Library : C:\DATABASE\NIST11.L
 TIC Integration Parameters: LSCINT.P

 Peak Number 6 Dibenzothiophene Concentration Rank 13

R.T.	EstConc	Area	Relative to ISTD	R.T.
11.23	6.17 ng	344059	Phenanthrene-d10	11.34

Hit#	of	Tentative ID	MW	MolForm	CAS#	Qual
1	5	Dibenzothiophene	184	C12H8S	000132-65-0	95
2		Naphtho[2,1-b]thiophene	184	C12H8S	000233-02-3	95
3		Naphtho[2,3-b]thiophene	184	C12H8S	000268-77-9	94
4		Naphtho[1,2-b]thiophene	184	C12H8S	000234-41-3	94
5		Azuleno(2,1-b)thiophene	184	C12H8S	000248-13-5	90



Data Path : Z:\SVOASRV\HPCHEM1\BNA F\DATA\BF081619\
 Data File : BF116340.D
 Acq On : 17 Aug 2019 1:38
 Operator : HP/JU
 Sample : K4228-12
 Misc :
 ALS Vial : 17 Sample Multiplier: 1

Instrument :
 BNA_F
 ClientSampleID :
 2S-11-14-COMP-(0-1)

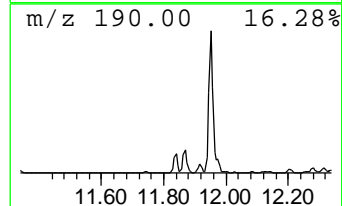
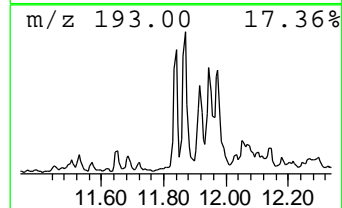
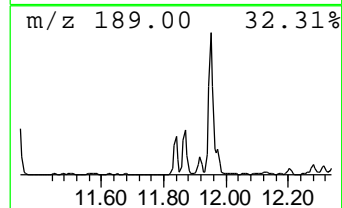
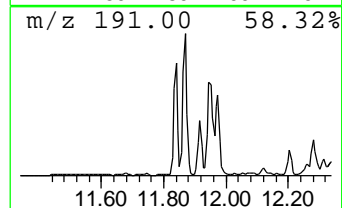
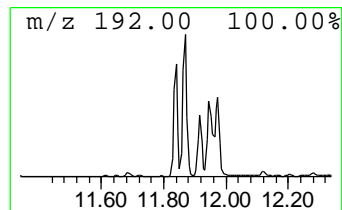
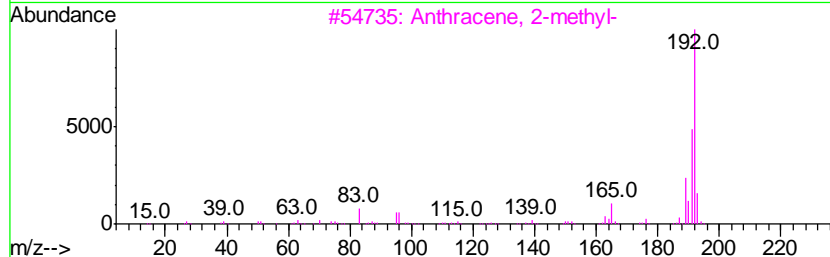
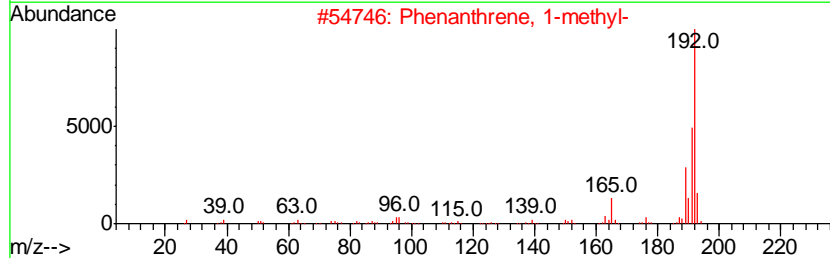
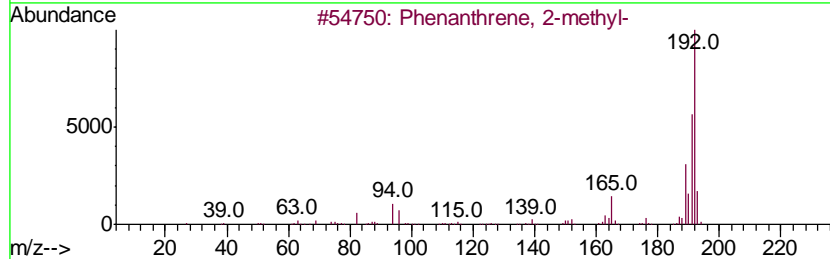
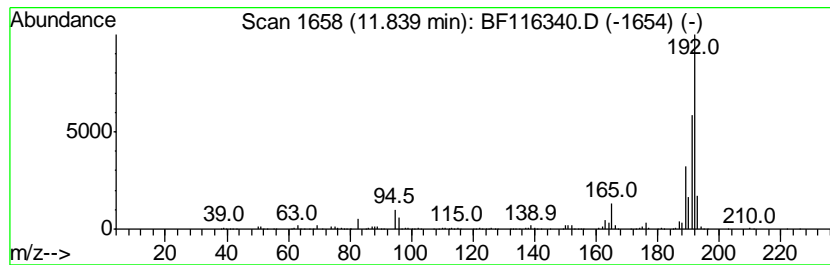
Quant Method : Z:\SVOASRV\HPCHEM1\BNA F\METHODS\8270-BF073019.M
 Quant Title : ASP BNA STANDARDS FOR 5 POINT CALIBRATION

TIC Library : C:\DATABASE\NIST11.L
 TIC Integration Parameters: LSCINT.P

 Peak Number 7 Phenanthrene, 2-methyl- Concentration Rank 7

R.T.	EstConc	Area	Relative to ISTD	R.T.
11.84	10.01 ng	558556	Phenanthrene-d10	11.34

Hit#	of	Tentative ID	MW	MolForm	CAS#	Qual
1	5	Phenanthrene, 2-methyl-	192	C15H12	002531-84-2	98
2		Phenanthrene, 1-methyl-	192	C15H12	000832-69-9	97
3		Anthracene, 2-methyl-	192	C15H12	000613-12-7	96
4		1H-Cyclopropa[1]phenanthrene, 1a, ...	192	C15H12	000949-41-7	95
5		Phenanthrene, 4-methyl-	192	C15H12	000832-64-4	95



Data Path : Z:\SVOASRV\HPCHEM1\BNA F\DATA\BF081619\
 Data File : BF116340.D
 Acq On : 17 Aug 2019 1:38
 Operator : HP/JU
 Sample : K4228-12
 Misc :
 ALS Vial : 17 Sample Multiplier: 1

Instrument :
 BNA_F
 ClientSampleId :
 2S-11-14-COMP-(0-1)

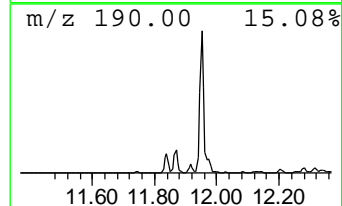
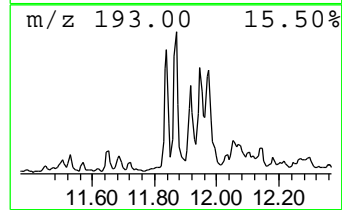
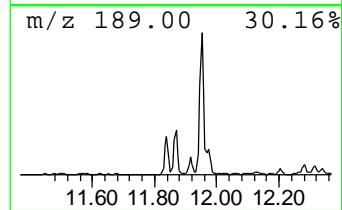
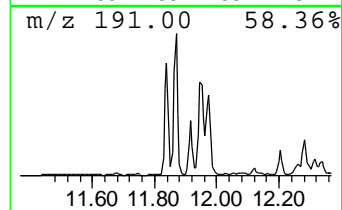
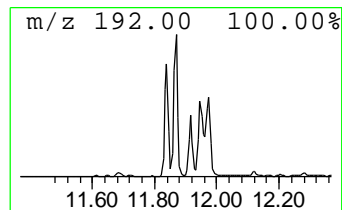
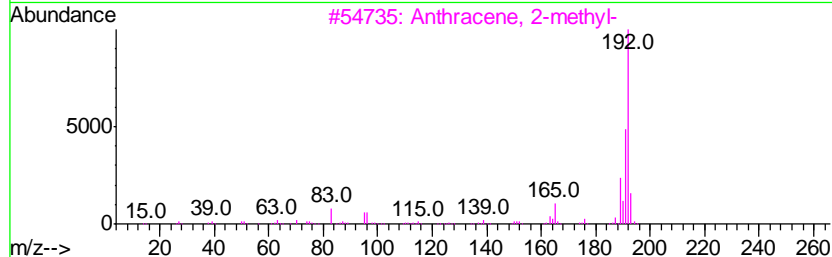
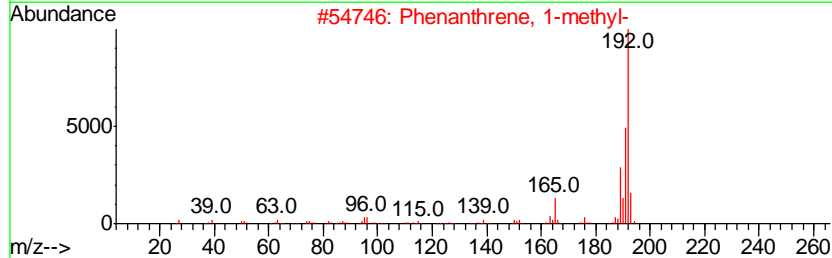
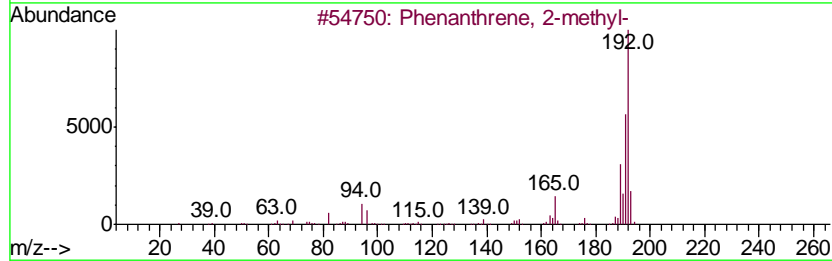
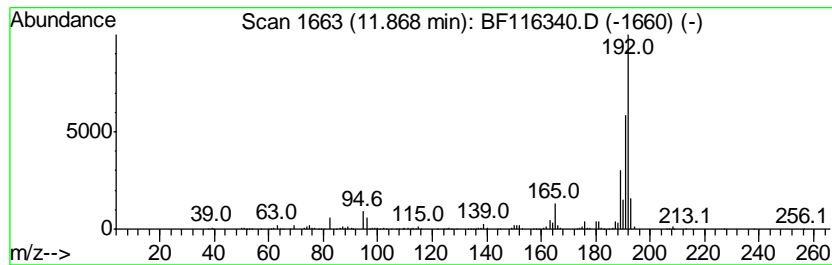
Quant Method : Z:\SVOASRV\HPCHEM1\BNA F\METHODS\8270-BF073019.M
 Quant Title : ASP BNA STANDARDS FOR 5 POINT CALIBRATION

TIC Library : C:\DATABASE\NIST11.L
 TIC Integration Parameters: LSCINT.P

 Peak Number 8 Phenanthrene, 1-methyl- Concentration Rank 6

R.T.	EstConc	Area	Relative to ISTD	R.T.
11.87	14.20 ng	792081	Phenanthrene-d10	11.34

Hit#	of	Tentative ID	MW	MolForm	CAS#	Qual
1	5	Phenanthrene, 2-methyl-	192	C15H12	002531-84-2	98
2		Phenanthrene, 1-methyl-	192	C15H12	000832-69-9	97
3		Anthracene, 2-methyl-	192	C15H12	000613-12-7	96
4		1H-Cyclopropa[1]phenanthrene, 1a, ...	192	C15H12	000949-41-7	95
5		Anthracene, 1-methyl-	192	C15H12	000610-48-0	95



Data Path : Z:\SVOASRV\HPCHEM1\BNA F\DATA\BF081619\
 Data File : BF116340.D
 Acq On : 17 Aug 2019 1:38
 Operator : HP/JU
 Sample : K4228-12
 Misc :
 ALS Vial : 17 Sample Multiplier: 1

Instrument :
 BNA_F
 ClientSampled :
 2S-11-14-COMP-(0-1)

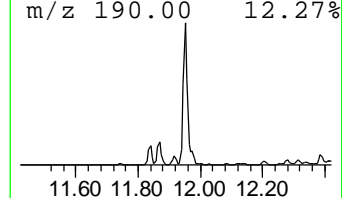
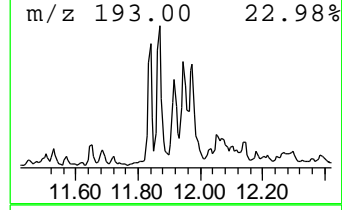
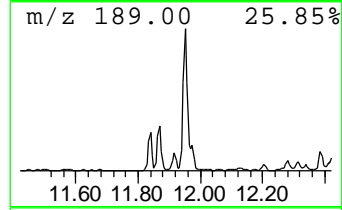
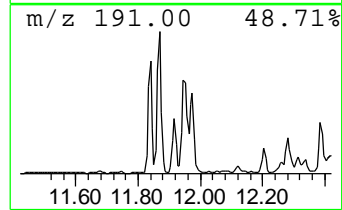
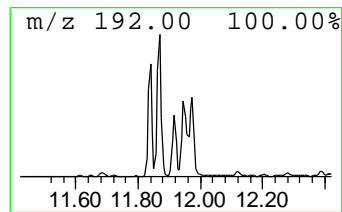
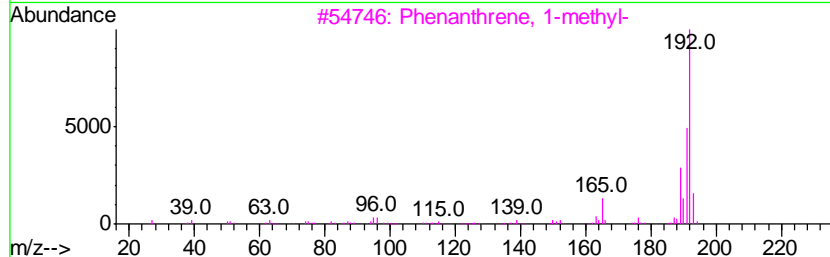
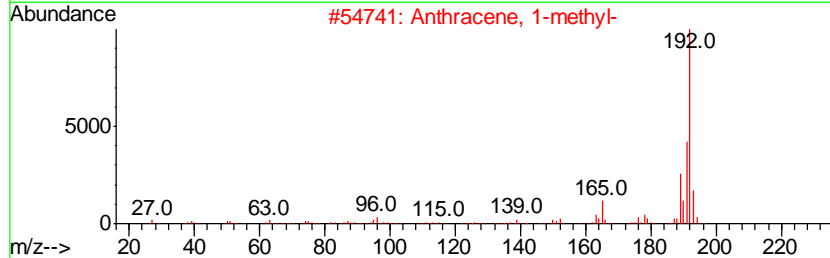
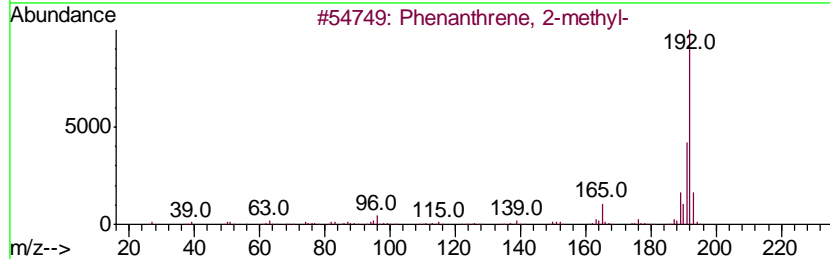
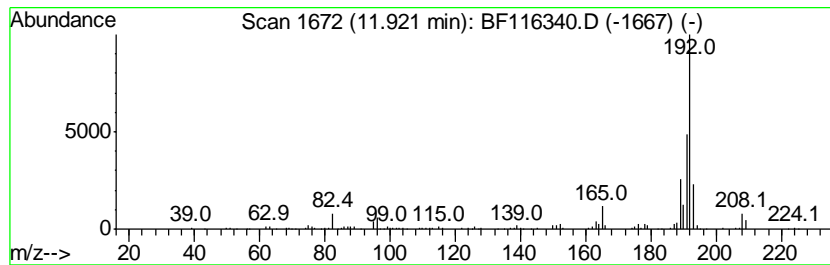
Quant Method : Z:\SVOASRV\HPCHEM1\BNA F\METHODS\8270-BF073019.M
 Quant Title : ASP BNA STANDARDS FOR 5 POINT CALIBRATION

TIC Library : C:\DATABASE\NIST11.L
 TIC Integration Parameters: LSCINT.P

 Peak Number 9 Anthracene, 1-methyl- Concentration Rank 17

R.T.	EstConc	Area	Relative to ISTD	R.T.
11.92	5.16 ng	288061	Phenanthrene-d10	11.34

Hit#	of	Tentative ID	MW	MolForm	CAS#	Qual
1	5	Phenanthrene, 2-methyl-	192	C15H12	002531-84-2	96
2		Anthracene, 1-methyl-	192	C15H12	000610-48-0	96
3		Phenanthrene, 1-methyl-	192	C15H12	000832-69-9	96
4		Anthracene, 2-methyl-	192	C15H12	000613-12-7	96
5		1H-Cyclopropa[1]phenanthrene, 1a, ...	192	C15H12	000949-41-7	95



Data Path : Z:\SVOASRV\HPCHEM1\BNA F\DATA\BF081619\
 Data File : BF116340.D
 Acq On : 17 Aug 2019 1:38
 Operator : HP/JU
 Sample : K4228-12
 Misc :
 ALS Vial : 17 Sample Multiplier: 1

Instrument :
 BNA_F
 ClientSampleID :
 2S-11-14-COMP-(0-1)

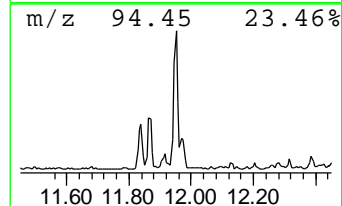
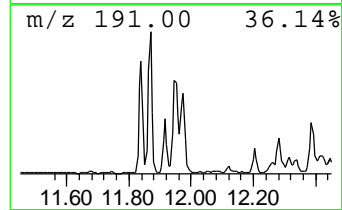
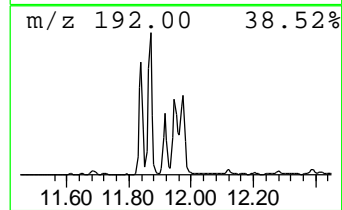
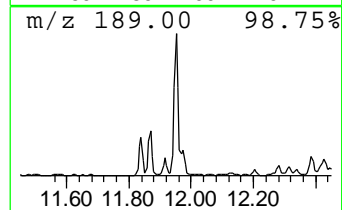
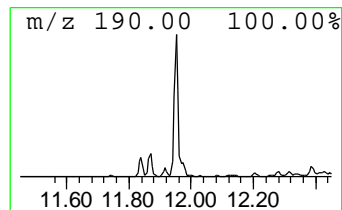
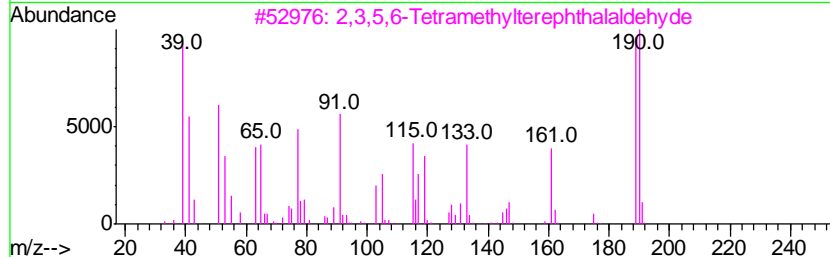
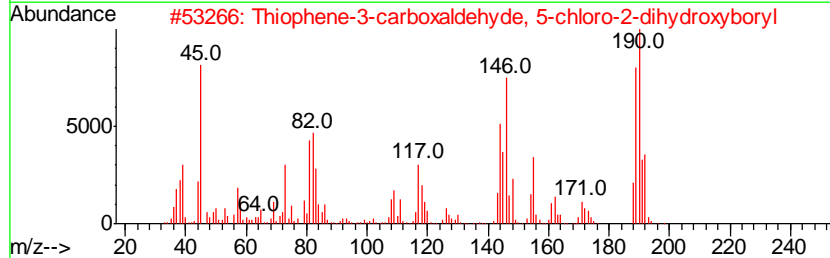
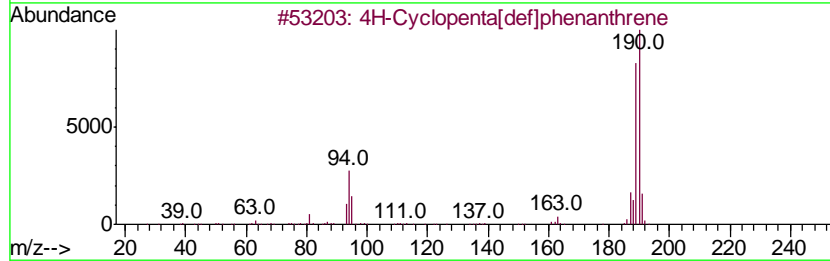
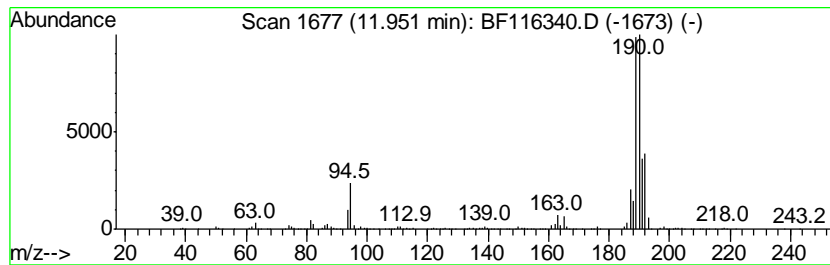
Quant Method : Z:\SVOASRV\HPCHEM1\BNA F\METHODS\8270-BF073019.M
 Quant Title : ASP BNA STANDARDS FOR 5 POINT CALIBRATION

TIC Library : C:\DATABASE\NIST11.L
 TIC Integration Parameters: LSCINT.P

 Peak Number 10 4H-Cyclopenta[def]phenanthrene Concentration Rank 5

R.T.	EstConc	Area	Relative to ISTD	R.T.
11.95	19.02 ng	1061300	Phenanthrene-d10	11.34

Hit#	of	Tentative ID	MW	MolForm	CAS#	Qual
1	5	4H-Cyclopenta[def]phenanthrene	190	C15H10	000203-64-5	95
2		Thiophene-3-carboxaldehyde, 5-ch...	190	C5H4BClO3S	036155-87-0	52
3		2,3,5,6-Tetramethylterephthalald...	190	C12H14O2	007072-01-7	47
4		Methyl diselenide	190	C2H6Se2	007101-31-7	46
5		2,2'-Bis(4,5-dimethylimidazole)	190	C10H14N4	069286-06-2	42



Data Path : Z:\SVOASRV\HPCHEM1\BNA F\DATA\BF081619\
 Data File : BF116340.D
 Acq On : 17 Aug 2019 1:38
 Operator : HP/JU
 Sample : K4228-12
 Misc :
 ALS Vial : 17 Sample Multiplier: 1

Instrument :
 BNA_F
 ClientSampleId :
 2S-11-14-COMP-(0-1)

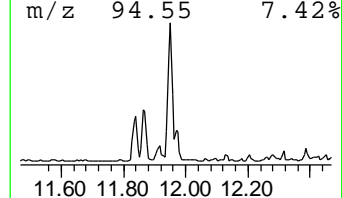
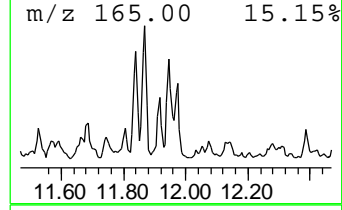
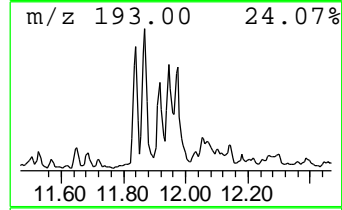
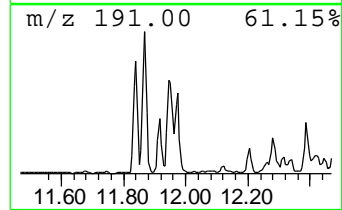
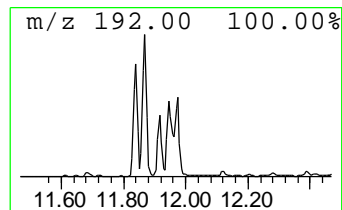
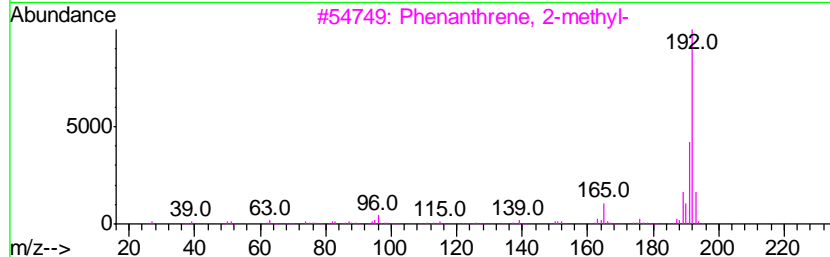
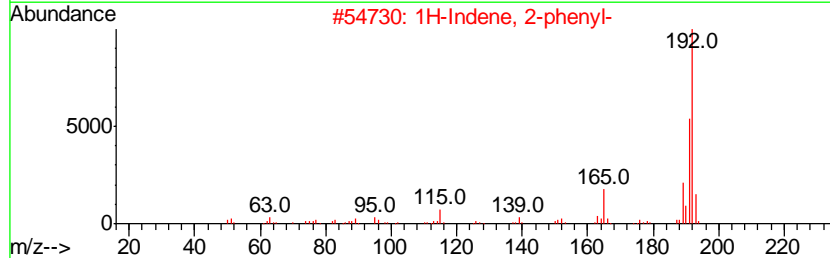
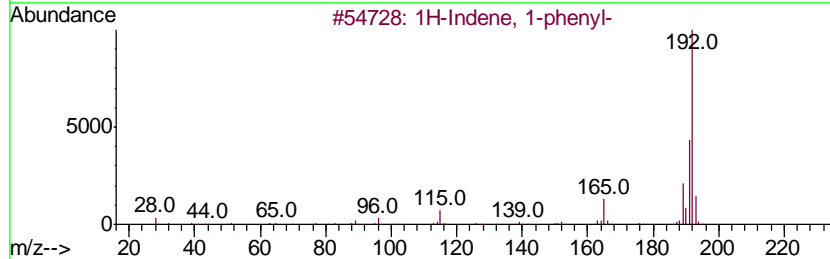
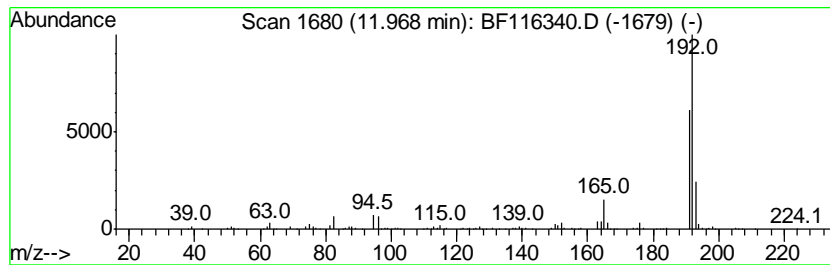
Quant Method : Z:\SVOASRV\HPCHEM1\BNA F\METHODS\8270-BF073019.M
 Quant Title : ASP BNA STANDARDS FOR 5 POINT CALIBRATION

TIC Library : C:\DATABASE\NIST11.L
 TIC Integration Parameters: LSCINT.P

 Peak Number 11 1H-Indene, 1-phenyl- Concentration Rank 11

R.T.	EstConc	Area	Relative to ISTD	R.T.
11.97	7.01 ng	391186	Phenanthrene-d10	11.34

Hit#	of	Tentative ID	MW	MolForm	CAS#	Qual
1	5	1H-Indene, 1-phenyl-	192	C15H12	001961-96-2	90
2		1H-Indene, 2-phenyl-	192	C15H12	004505-48-0	90
3		Phenanthrene, 2-methyl-	192	C15H12	002531-84-2	90
4		Phenanthrene, 4-methyl-	192	C15H12	000832-64-4	90
5		Anthracene, 9-methyl-	192	C15H12	000779-02-2	90



Data Path : Z:\SVOASRV\HPCHEM1\BNA F\DATA\BF081619\
 Data File : BF116340.D
 Acq On : 17 Aug 2019 1:38
 Operator : HP/JU
 Sample : K4228-12
 Misc :
 ALS Vial : 17 Sample Multiplier: 1

Instrument :
 BNA_F
 ClientSampleId :
 2S-11-14-COMP-(0-1)

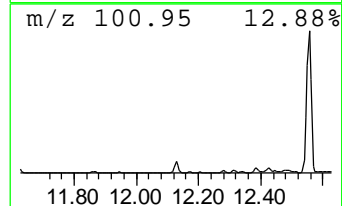
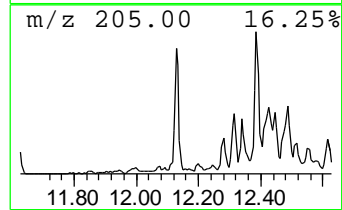
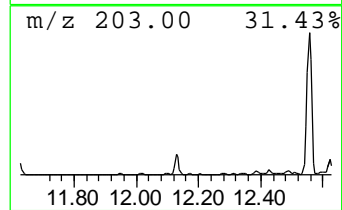
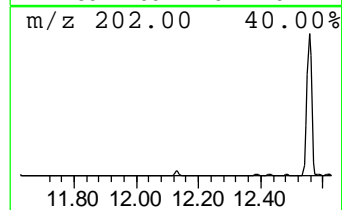
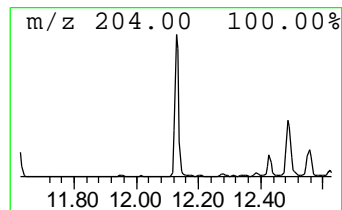
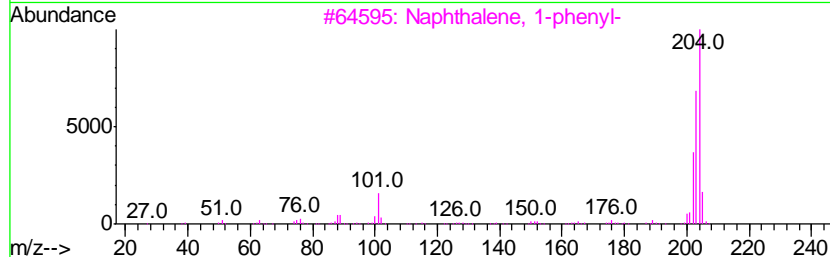
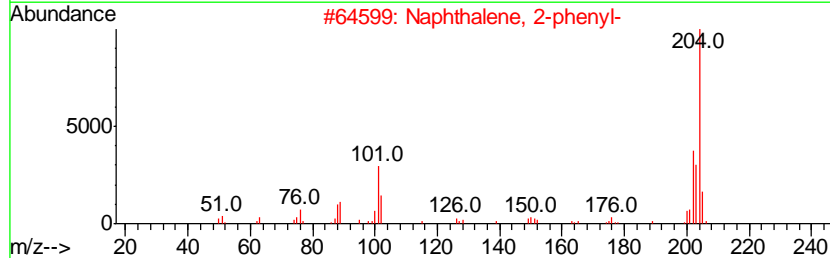
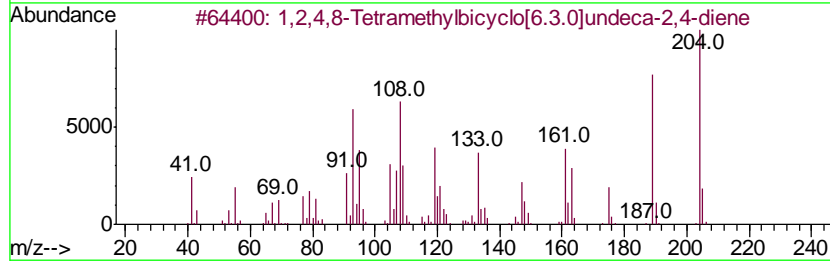
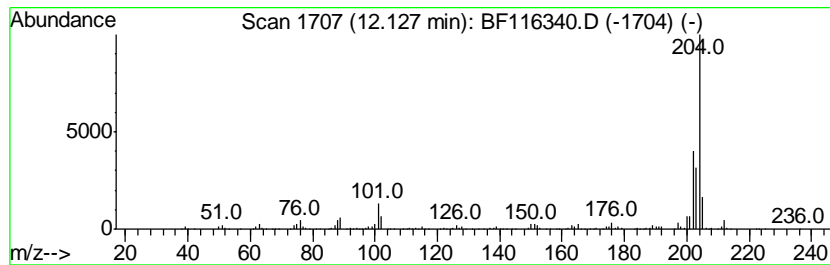
Quant Method : Z:\SVOASRV\HPCHEM1\BNA F\METHODS\8270-BF073019.M
 Quant Title : ASP BNA STANDARDS FOR 5 POINT CALIBRATION

TIC Library : C:\DATABASE\NIST11.L
 TIC Integration Parameters: LSCINT.P

 Peak Number 12 1,2,4,8-Tetramethylbicyclo[...] Concentration Rank 8

R.T.	EstConc	Area	Relative to ISTD	R.T.
12.13	7.99 ng	446010	Phenanthrene-d10	11.34

Hit#	of	Tentative ID	MW	MolForm	CAS#	Qual
1	5	1,2,4,8-Tetramethylbicyclo[6.3.0...]	204	C15H24	137235-51-9	89
2		Naphthalene, 2-phenyl-	204	C16H12	000612-94-2	86
3		Naphthalene, 1-phenyl-	204	C16H12	000605-02-7	78
4		Tricyclo[8.2.2.2(4,7)]hexadeca-2...	204	C16H12	006572-60-7	58
5		9,10-Bis(bromomethyl)anthracene	362	C16H12Br2	034373-96-1	53



Data Path : Z:\SVOASRV\HPCHEM1\BNA F\DATA\BF081619\
 Data File : BF116340.D
 Acq On : 17 Aug 2019 1:38
 Operator : HP/JU
 Sample : K4228-12
 Misc :
 ALS Vial : 17 Sample Multiplier: 1

Instrument :
 BNA_F
 ClientSampleID :
 2S-11-14-COMP-(0-1)

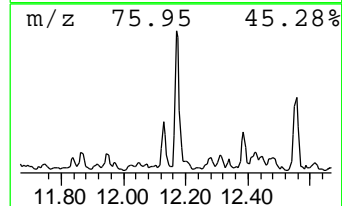
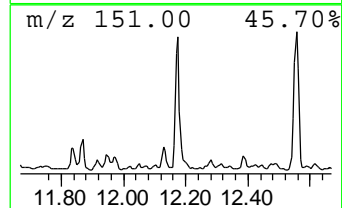
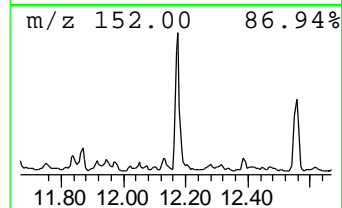
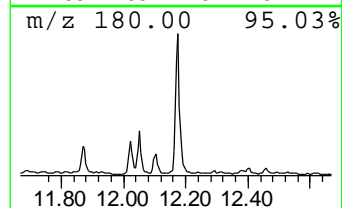
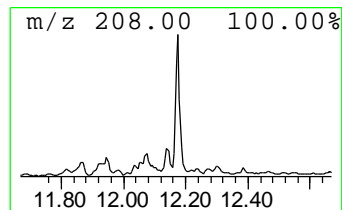
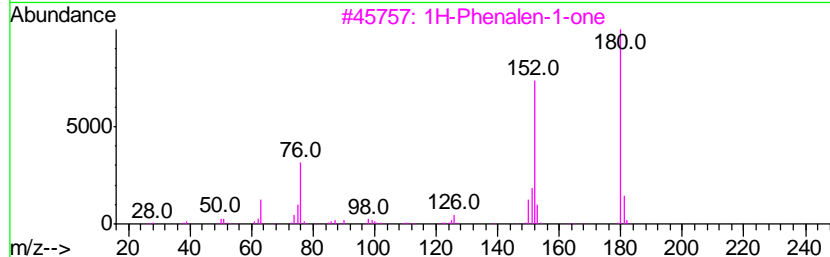
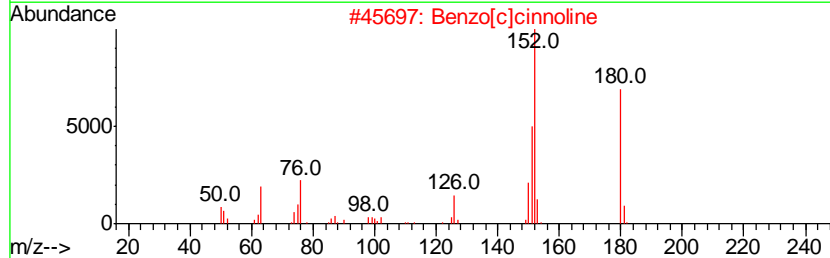
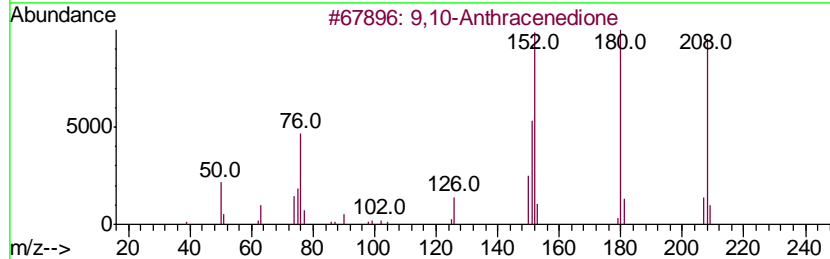
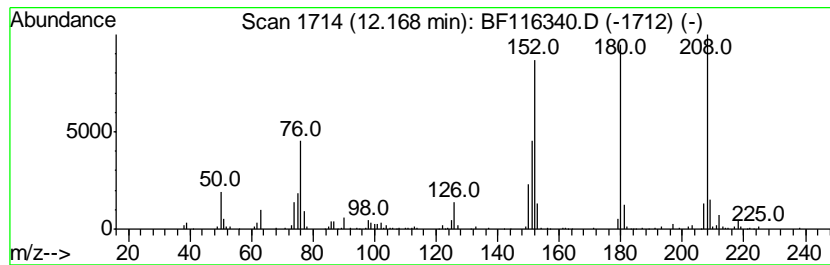
Quant Method : Z:\SVOASRV\HPCHEM1\BNA F\METHODS\8270-BF073019.M
 Quant Title : ASP BNA STANDARDS FOR 5 POINT CALIBRATION

TIC Library : C:\DATABASE\NIST11.L
 TIC Integration Parameters: LSCINT.P

 Peak Number 13 9,10-Anthracenedione Concentration Rank 16

R.T.	EstConc	Area	Relative to ISTD	R.T.
12.17	5.19 ng	289775	Phenanthrene-d10	11.34

Hit#	of	Tentative ID	MW	MolForm	CAS#	Qual
1	5	9,10-Anthracenedione	208	C14H8O2	000084-65-1	97
2		Benzo[c]cinnoline	180	C12H8N2	000230-17-1	70
3		1H-Phenalen-1-one	180	C13H8O	000548-39-0	60
4		Benzo[h]cinnoline	180	C12H8N2	000230-31-9	60
5		1,4-Anthracenedione	208	C14H8O2	000635-12-1	58



Data Path : Z:\SVOASRV\HPCHEM1\BNA F\DATA\BF081619\
 Data File : BF116340.D
 Acq On : 17 Aug 2019 1:38
 Operator : HP/JU
 Sample : K4228-12
 Misc :
 ALS Vial : 17 Sample Multiplier: 1

Instrument :
 BNA_F
 ClientSampleID :
 2S-11-14-COMP-(0-1)

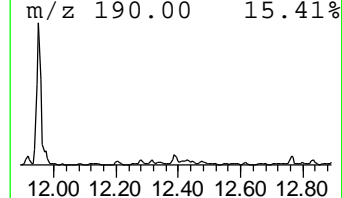
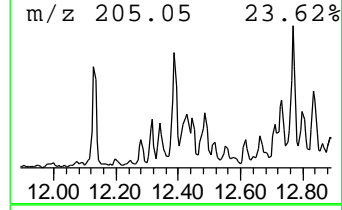
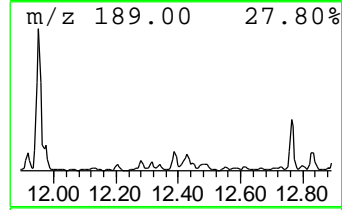
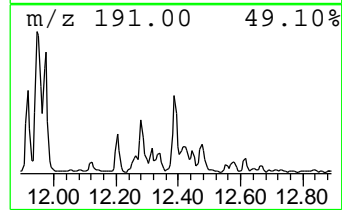
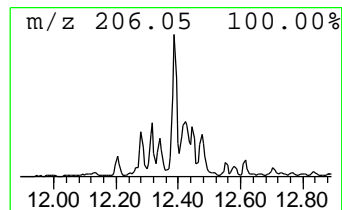
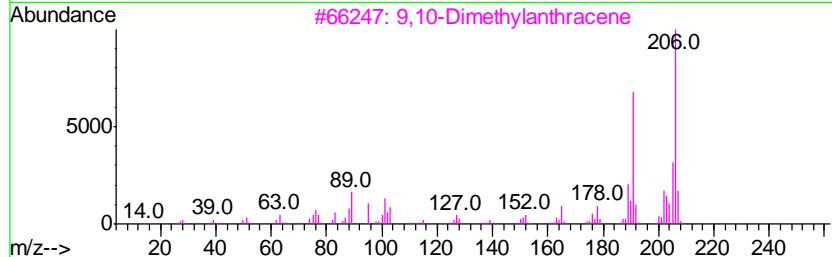
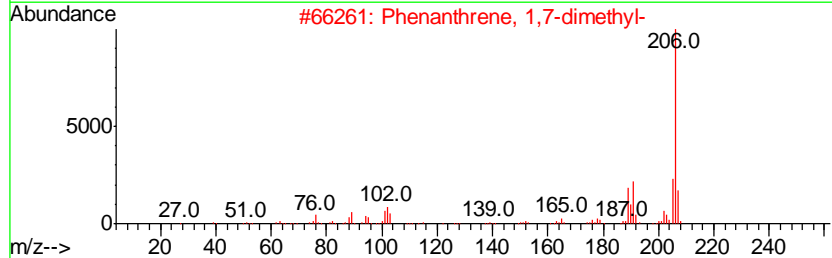
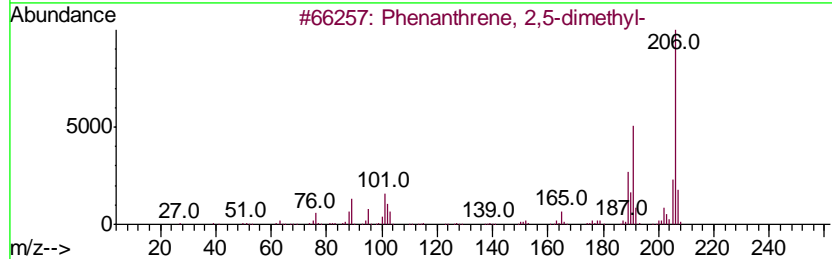
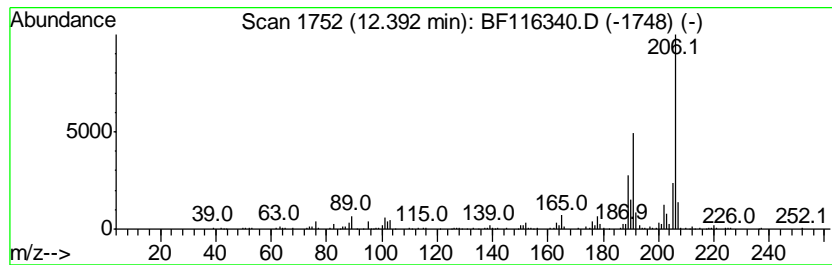
Quant Method : Z:\SVOASRV\HPCHEM1\BNA F\METHODS\8270-BF073019.M
 Quant Title : ASP BNA STANDARDS FOR 5 POINT CALIBRATION

TIC Library : C:\DATABASE\NIST11.L
 TIC Integration Parameters: LSCINT.P

 Peak Number 14 Phenanthrene, 2,5-dimethyl- Concentration Rank 10

R.T.	EstConc	Area	Relative to ISTD	R.T.
12.39	7.37 ng	410952	Phenanthrene-d10	11.34

Hit#	of	Tentative ID	MW	MolForm	CAS#	Qual
1	5	Phenanthrene, 2,5-dimethyl-	206	C16H14	003674-66-6	97
2		Phenanthrene, 1,7-dimethyl-	206	C16H14	000483-87-4	93
3		9,10-Dimethylantracene	206	C16H14	000781-43-1	93
4		di-p-Tolylacetylene	206	C16H14	002789-88-0	93
5		Phenanthrene, 2,3-dimethyl-	206	C16H14	003674-65-5	87



Data Path : Z:\SVOASRV\HPCHEM1\BNA F\DATA\BF081619\
 Data File : BF116340.D
 Acq On : 17 Aug 2019 1:38
 Operator : HP/JU
 Sample : K4228-12
 Misc :
 ALS Vial : 17 Sample Multiplier: 1

Instrument :
 BNA_F
 ClientSampled :
 2S-11-14-COMP-(0-1)

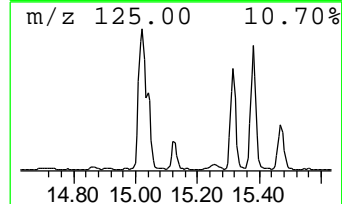
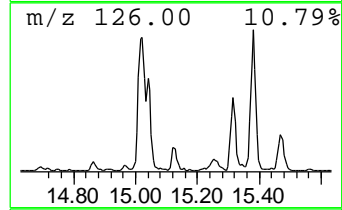
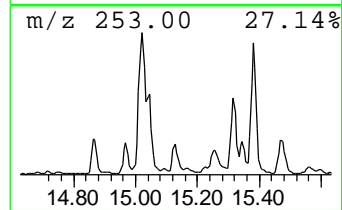
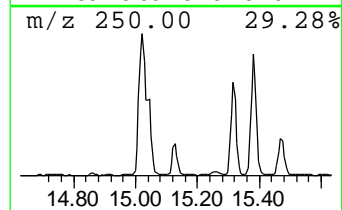
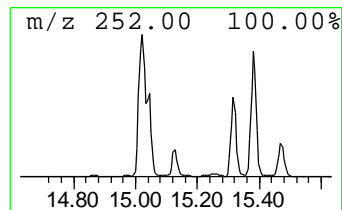
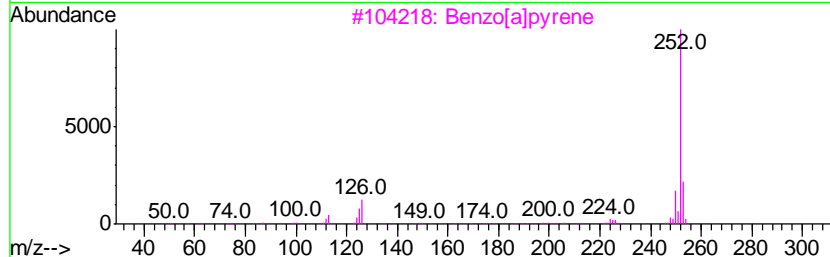
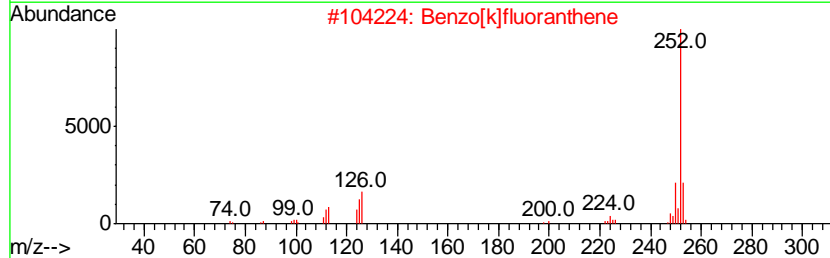
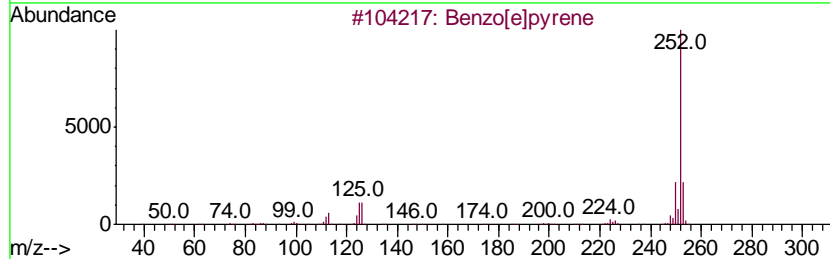
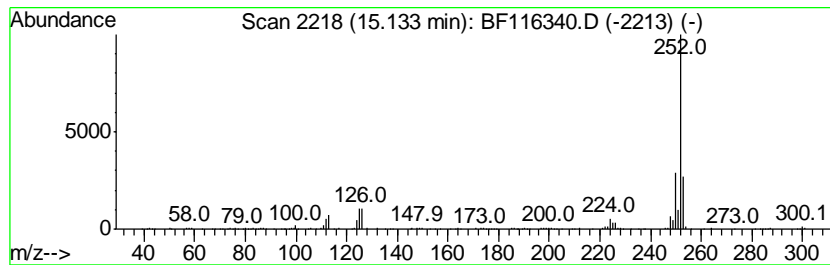
Quant Method : Z:\SVOASRV\HPCHEM1\BNA F\METHODS\8270-BF073019.M
 Quant Title : ASP BNA STANDARDS FOR 5 POINT CALIBRATION

TIC Library : C:\DATABASE\NIST11.L
 TIC Integration Parameters: LSCINT.P

 Peak Number 15 Perylene Concentration Rank 9

R.T.	EstConc	Area	Relative to ISTD	R.T.
15.13	7.42 ng	323208	Perylene-d12	15.44

Hit#	of	Tentative ID	MW	MolForm	CAS#	Qual
1	5	Benzo[e]pyrene	252	C20H12	000192-97-2	98
2		Benzo[k]fluoranthene	252	C20H12	000207-08-9	96
3		Benzo[a]pyrene	252	C20H12	000050-32-8	95
4		Perylene	252	C20H12	000198-55-0	95
5		Benz[e]acephenanthrylene	252	C20H12	000205-99-2	95



Data Path : Z:\SVOASRV\HPCHEM1\BNA F\DATA\BF081619\
 Data File : BF116340.D
 Acq On : 17 Aug 2019 1:38
 Operator : HP/JU
 Sample : K4228-12
 Misc :
 ALS Vial : 17 Sample Multiplier: 1

Instrument :
 BNA_F
 ClientSampleId :
 2S-11-14-COMP-(0-1)

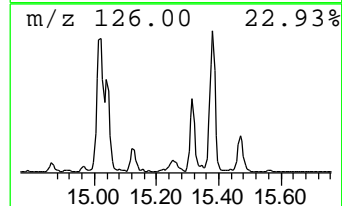
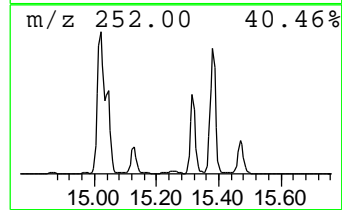
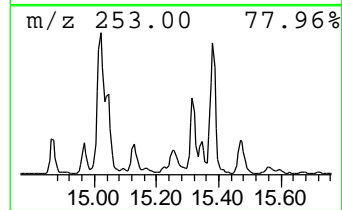
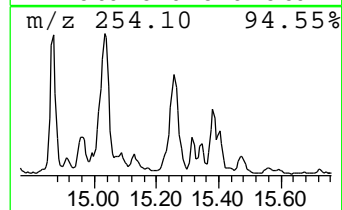
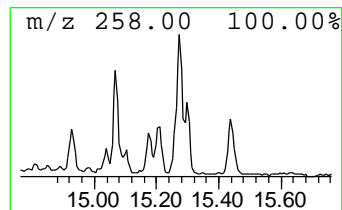
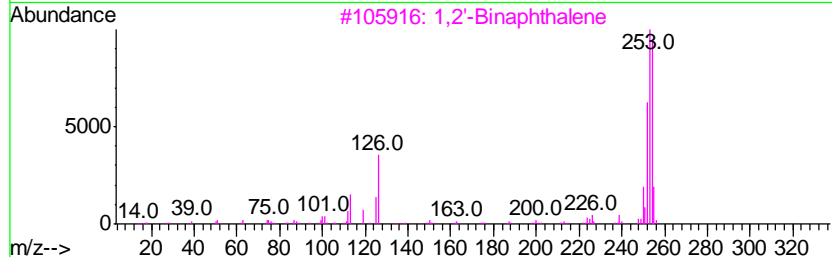
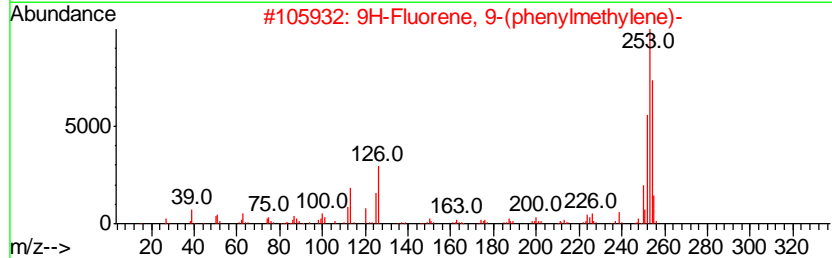
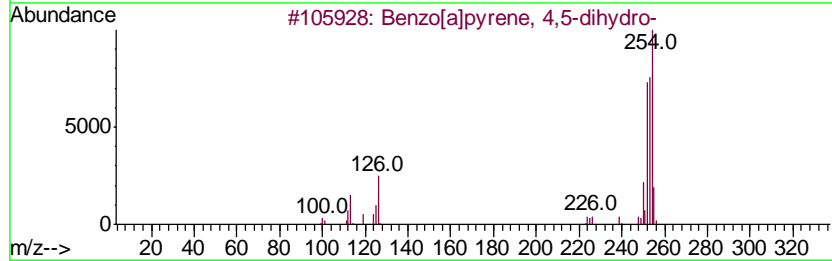
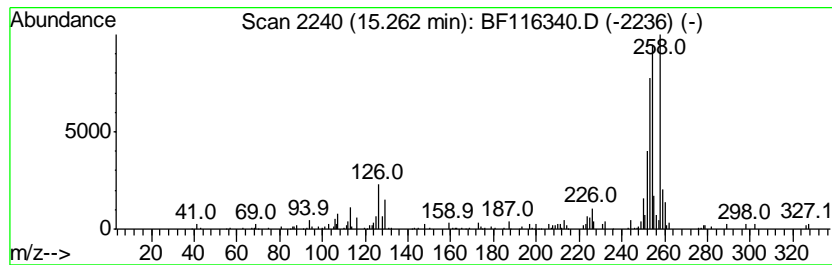
Quant Method : Z:\SVOASRV\HPCHEM1\BNA F\METHODS\8270-BF073019.M
 Quant Title : ASP BNA STANDARDS FOR 5 POINT CALIBRATION

TIC Library : C:\DATABASE\NIST11.L
 TIC Integration Parameters: LSCINT.P

 Peak Number 16 Benzo[a]pyrene, 4,5-dihydro- Concentration Rank 15

R.T.	EstConc	Area	Relative to ISTD	R.T.
15.26	5.69 ng	247763	Perylene-d12	15.44

Hit#	of	Tentative ID	MW	MolForm	CAS#	Qual
1	5	Benzo[a]pyrene, 4,5-dihydro-	254	C20H14	057652-66-1	78
2		9H-Fluorene, 9-(phenylmethylene)-	254	C20H14	001836-87-9	78
3		1,2'-Binaphthalene	254	C20H14	004325-74-0	78
4		Anthracene, 9-phenyl-	254	C20H14	000602-55-1	64
5		1,1'-Binaphthalene	254	C20H14	000604-53-5	60



Data Path : Z:\SVOASRV\HPCHEM1\BNA F\DATA\BF081619\
 Data File : BF116340.D
 Acq On : 17 Aug 2019 1:38
 Operator : HP/JU
 Sample : K4228-12
 Misc :
 ALS Vial : 17 Sample Multiplier: 1

Instrument :
 BNA_F
 ClientSampleId :
 2S-11-14-COMP-(0-1)

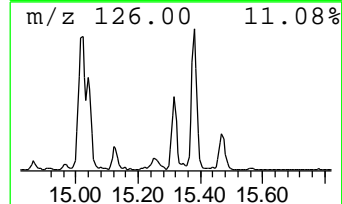
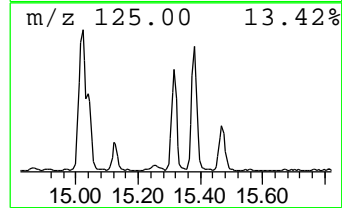
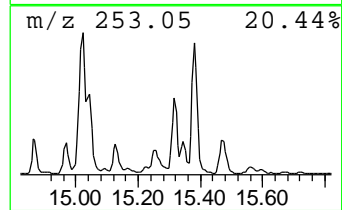
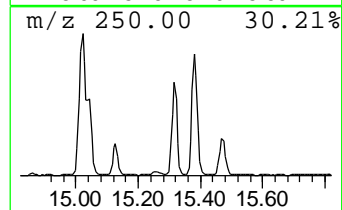
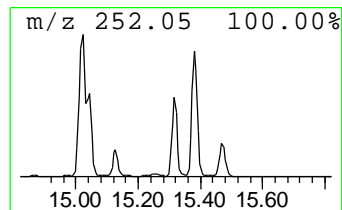
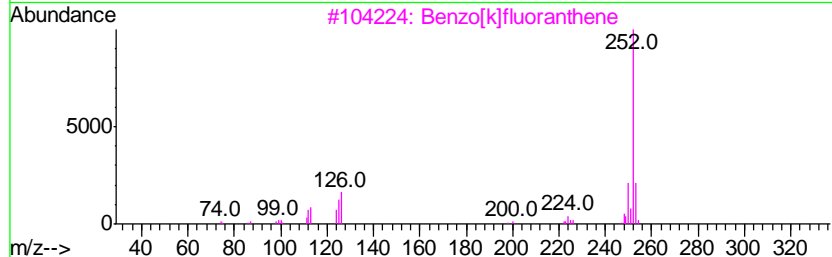
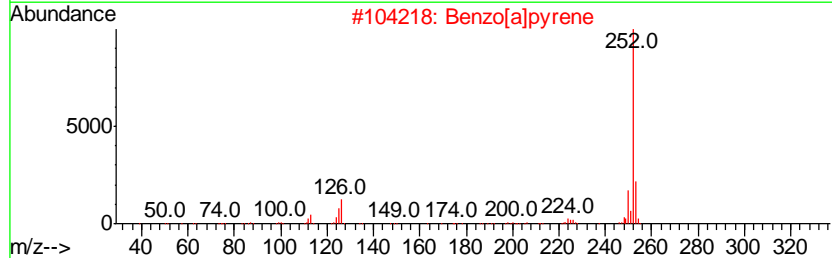
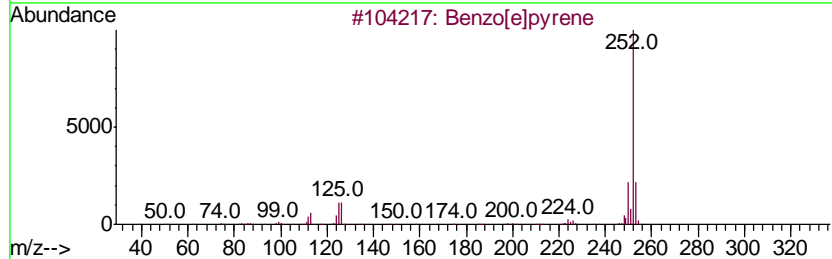
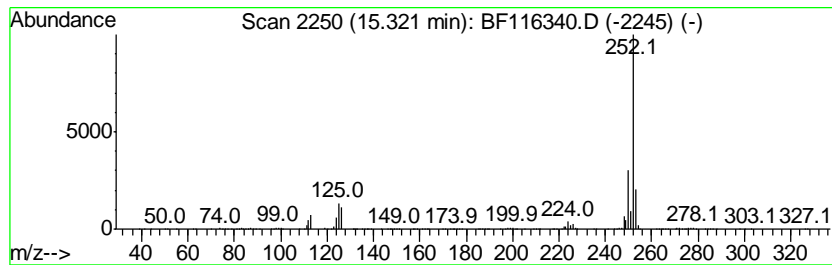
Quant Method : Z:\SVOASRV\HPCHEM1\BNA F\METHODS\8270-BF073019.M
 Quant Title : ASP BNA STANDARDS FOR 5 POINT CALIBRATION

TIC Library : C:\DATABASE\NIST11.L
 TIC Integration Parameters: LSCINT.P

 Peak Number 17 Benzo[e]pyrene Concentration Rank 4

R.T.	EstConc	Area	Relative to ISTD	R.T.
15.32	27.26 ng	1187540	Perylene-d12	15.44

Hit#	of	Tentative ID	MW	MolForm	CAS#	Qual
1	5	Benzo[e]pyrene	252	C20H12	000192-97-2	98
2		Benzo[a]pyrene	252	C20H12	000050-32-8	95
3		Benzo[k]fluoranthene	252	C20H12	000207-08-9	94
4		Benzo[e]acephenanthrylene	252	C20H12	000205-99-2	90
5		Benzo[j]fluoranthene	252	C20H12	000205-82-3	89



Data Path : Z:\SVOASRV\HPCHEM1\BNA F\DATA\BF081619\
 Data File : BF116340.D
 Acq On : 17 Aug 2019 1:38
 Operator : HP/JU
 Sample : K4228-12
 Misc :
 ALS Vial : 17 Sample Multiplier: 1

Instrument :
 BNA_F
 ClientSampled :
 2S-11-14-COMP-(0-1)

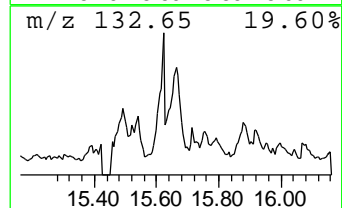
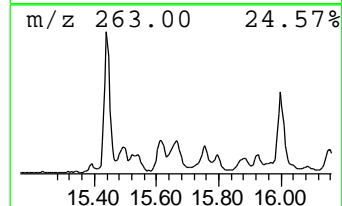
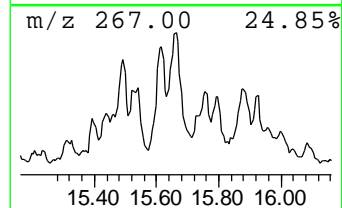
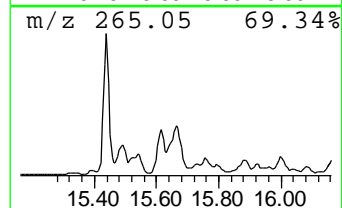
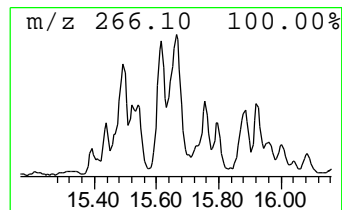
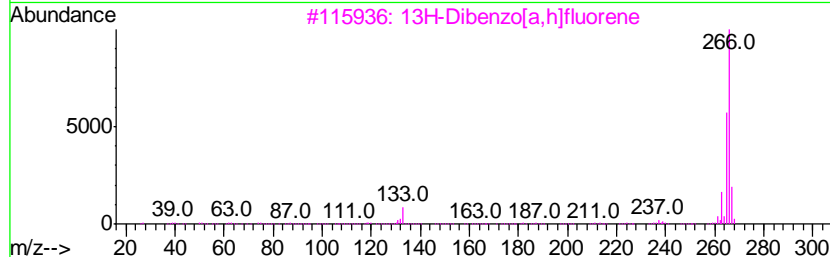
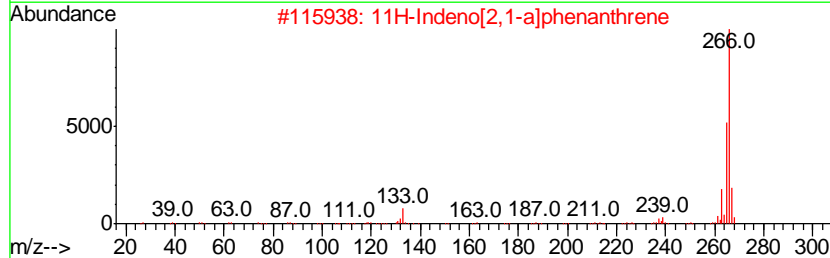
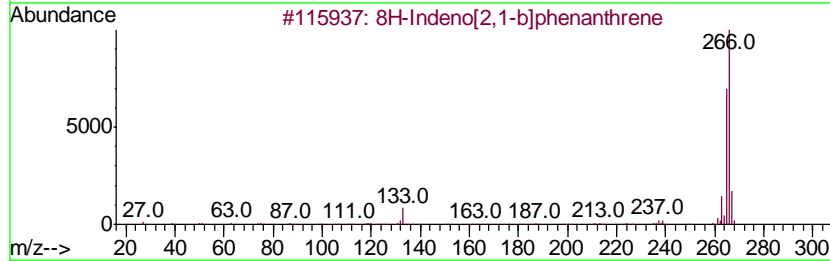
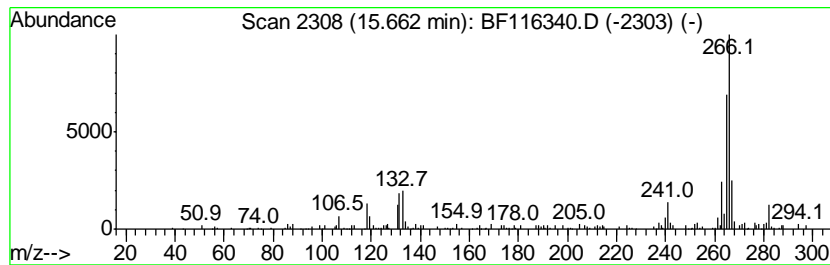
Quant Method : Z:\SVOASRV\HPCHEM1\BNA F\METHODS\8270-BF073019.M
 Quant Title : ASP BNA STANDARDS FOR 5 POINT CALIBRATION

TIC Library : C:\DATABASE\NIST11.L
 TIC Integration Parameters: LSCINT.P

 Peak Number 18 8H-Indeno[2,1-b]phenanthrene Concentration Rank 18

R.T.	EstConc	Area	Relative to ISTD	R.T.
15.66	5.04 ng	219698	Perylene-d12	15.44

Hit#	of	Tentative ID	MW	MolForm	CAS#	Qual
1	5	8H-Indeno[2,1-b]phenanthrene	266	C21H14	000241-28-1	76
2		11H-Indeno[2,1-a]phenanthrene	266	C21H14	000220-97-3	70
3		13H-Dibenzo[a,h]fluorene	266	C21H14	000239-85-0	70
4		Thiazole, 4-phenyl-2-(4-tolylami...	266	C16H14N2S	016098-04-7	64
5		Benz[j]aceanthrylene, 3-methyl-	266	C21H14	003343-10-0	58



Data Path : Z:\SVOASRV\HPCHEM1\BNA F\DATA\BF081619\
 Data File : BF116340.D
 Acq On : 17 Aug 2019 1:38
 Operator : HP/JU
 Sample : K4228-12
 Misc :
 ALS Vial : 17 Sample Multiplier: 1

Instrument :
 BNA_F
 ClientSampleId :
 2S-11-14-COMP-(0-1)

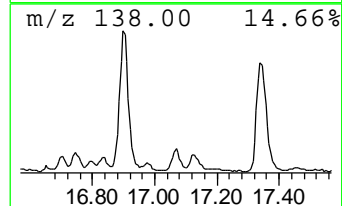
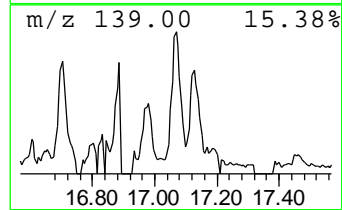
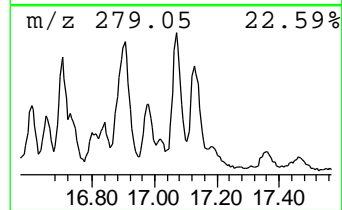
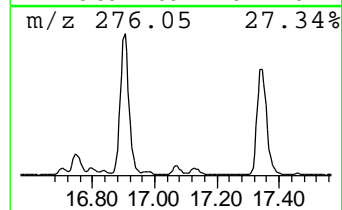
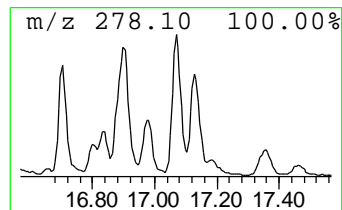
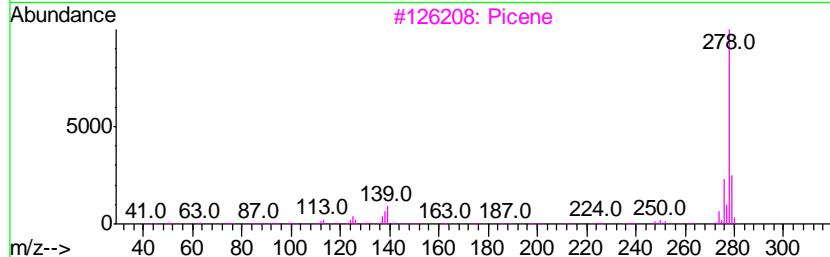
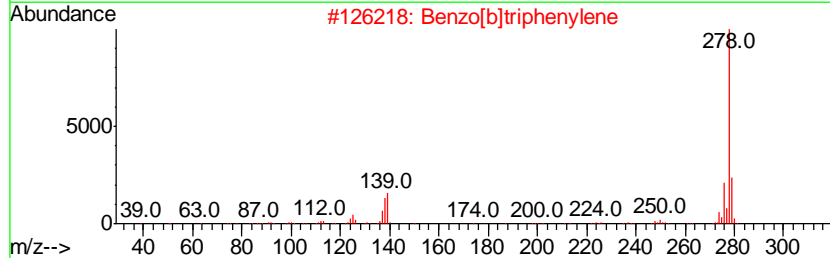
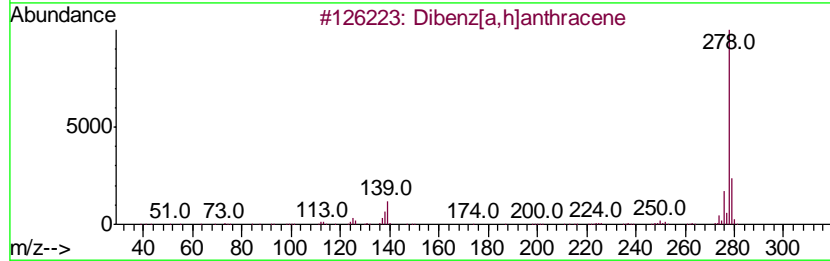
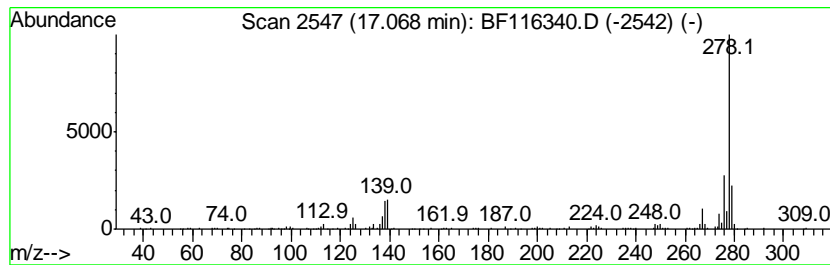
Quant Method : Z:\SVOASRV\HPCHEM1\BNA F\METHODS\8270-BF073019.M
 Quant Title : ASP BNA STANDARDS FOR 5 POINT CALIBRATION

TIC Library : C:\DATABASE\NIST11.L
 TIC Integration Parameters: LSCINT.P

 Peak Number 19 Benzo[b]triphenylene Concentration Rank 14

R.T.	EstConc	Area	Relative to ISTD	R.T.
17.07	6.12 ng	266450	Perylene-d12	15.44

Hit#	of	Tentative ID	MW	MolForm	CAS#	Qual
1	5	Dibenz[a,h]anthracene	278	C22H14	000053-70-3	97
2		Benzo[b]triphenylene	278	C22H14	000215-58-7	96
3		Picene	278	C22H14	000213-46-7	93
4		Pentaphene	278	C22H14	000222-93-5	90
5		Benzo[a]naphthacene	278	C22H14	000226-88-0	90



Data Path : Z:\SVOASRV\HPCHEM1\BNA F\DATA\BF081619\
 Data File : BF116340.D
 Acq On : 17 Aug 2019 1:38
 Operator : HP/JU
 Sample : K4228-12
 Misc :
 ALS Vial : 17 Sample Multiplier: 1

Instrument :
 BNA_F
 ClientSampleId :
 2S-11-14-COMP-(0-1)

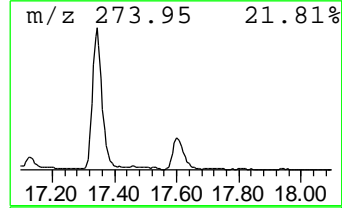
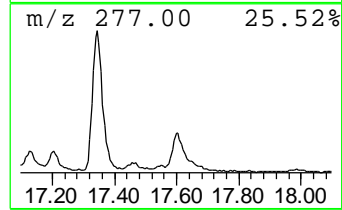
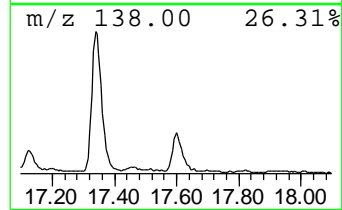
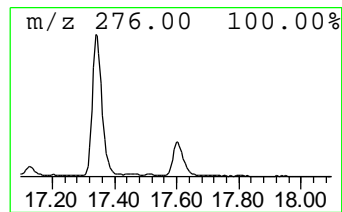
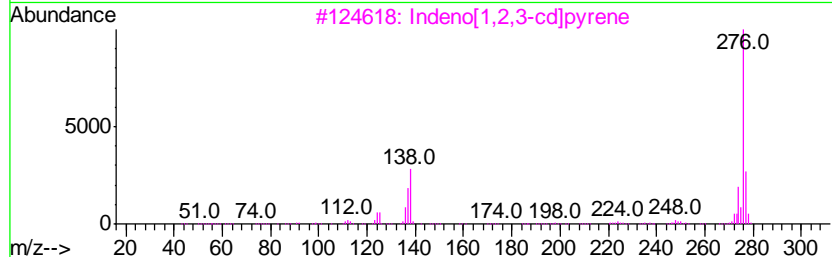
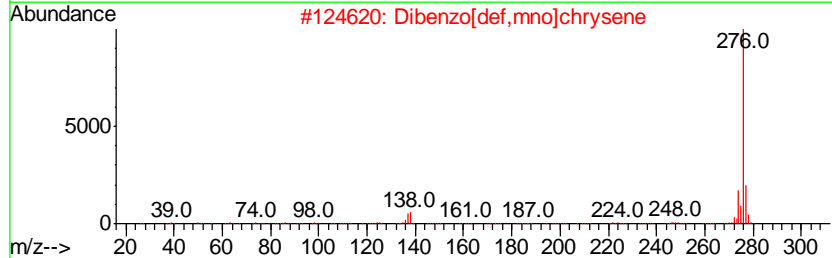
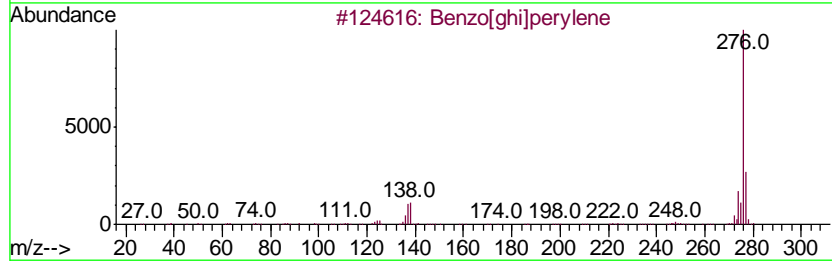
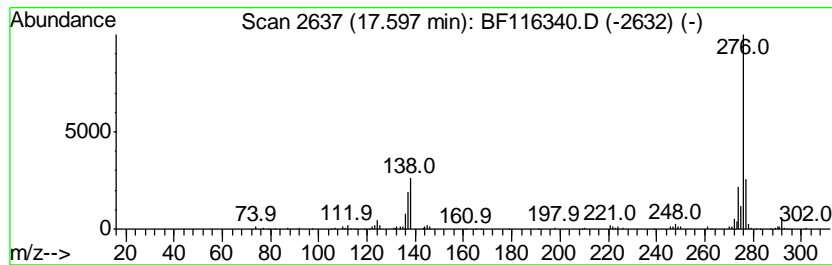
Quant Method : Z:\SVOASRV\HPCHEM1\BNA F\METHODS\8270-BF073019.M
 Quant Title : ASP BNA STANDARDS FOR 5 POINT CALIBRATION

TIC Library : C:\DATABASE\NIST11.L
 TIC Integration Parameters: LSCINT.P

 Peak Number 20 Dibenzo[def,mno]chrysene Concentration Rank 12

R.T.	EstConc	Area	Relative to ISTD	R.T.
17.60	6.26 ng	272776	Perylene-d12	15.44

Hit#	of	Tentative ID	MW	MolForm	CAS#	Qual
1	5	Benzo[ghi]perylene	276	C22H12	000191-24-2	94
2		Dibenzo[def,mno]chrysene	276	C22H12	000191-26-4	93
3		Indeno[1,2,3-cd]pyrene	276	C22H12	000193-39-5	91
4		Indeno[1,2,3-cd]fluoranthene	276	C22H12	000193-43-1	52
5		1H-Cyclopenta[4,5]pyrido[1,2-a]b...	276	C17H16N4	329707-31-5	50



Data Path : Z:\SVOASRV\HPCHEM1\BNA_F\DATA\BF081619\
 Data File : BF116340.D
 Acq On : 17 Aug 2019 1:38
 Operator : HP/JU
 Sample : K4228-12
 Misc :
 ALS Vial : 17 Sample Multiplier: 1

Instrument :
 BNA_F
 ClientSampleId :
 2S-11-14-COMP-(0-1)

Quant Method : Z:\SVOASRV\HPCHEM1\BNA_F\METHODS\8270-BF073019.M
 Quant Title : ASP BNA STANDARDS FOR 5 POINT CALIBRATION

TIC Library : C:\DATABASE\NIST11.L
 TIC Integration Parameters: LSCINT.P

TIC Top Hit name	RT	EstConc	Units	Response	--Internal Standard--			
					#	RT	Resp	Conc
Butane, 2-methoxy...	2.12	35.6	ng	1534820	1	6.82	862224	20.0
unknown6.59	6.59	65.6	ng	2829170	1	6.82	862224	20.0
9H-Fluorene, 2-me...	10.95	4.9	ng	275769	4	11.34	1115880	20.0
unknown11.19	11.19	4.8	ng	265648	4	11.34	1115880	20.0
Dibenzothiophene	11.23	6.2	ng	344059	4	11.34	1115880	20.0
Phenanthrene, 2-m...	11.84	10.0	ng	558556	4	11.34	1115880	20.0
Phenanthrene, 1-m...	11.87	14.2	ng	792081	4	11.34	1115880	20.0
Anthracene, 1-met...	11.92	5.2	ng	288061	4	11.34	1115880	20.0
4H-Cyclopenta[def...	11.95	19.0	ng	1061300	4	11.34	1115880	20.0
1H-Indene, 1-phenyl-	11.97	7.0	ng	391186	4	11.34	1115880	20.0
1,2,4,8-Tetrameth...	12.13	8.0	ng	446010	4	11.34	1115880	20.0
9,10-Anthracenedione	12.17	5.2	ng	289775	4	11.34	1115880	20.0
Phenanthrene, 2,5...	12.39	7.4	ng	410952	4	11.34	1115880	20.0
Perylene	15.13	7.4	ng	323208	6	15.44	871324	20.0
Benzo[alpyrene, 4...	15.26	5.7	ng	247763	6	15.44	871324	20.0
Benzo[e]pyrene	15.32	27.3	ng	1187540	6	15.44	871324	20.0
8H-Indeno[2,1-b]p...	15.66	5.0	ng	219698	6	15.44	871324	20.0
Benzo[b]triphenylene	17.07	6.1	ng	266450	6	15.44	871324	20.0
Dibenzo[def,mno]c...	17.60	6.3	ng	272776	6	15.44	871324	20.0