

Data Path : Z:\SVOASRV\HPCHEM1\BNA F\DATA\BF082420\
 Data File : BF121413.D
 Acq On : 24 Aug 2020 22:32
 Operator : JU/CG
 Sample : L3719-04
 Misc :
 ALS Vial : 13 Sample Multiplier: 1

Instrument :
 BNA_F
 ClientSampleId :
 20200510-AMENDED-COMP-A

Quant Time: Aug 25 04:48:00 2020
 Quant Method : Z:\SVOASRV\HPCHEM1\BNA F\METHODS\8270-BF081920.M
 Quant Title : ASP BNA STANDARDS FOR 5 POINT CALIBRATION
 QLast Update : Thu Aug 20 04:56:10 2020
 Response via : Initial Calibration

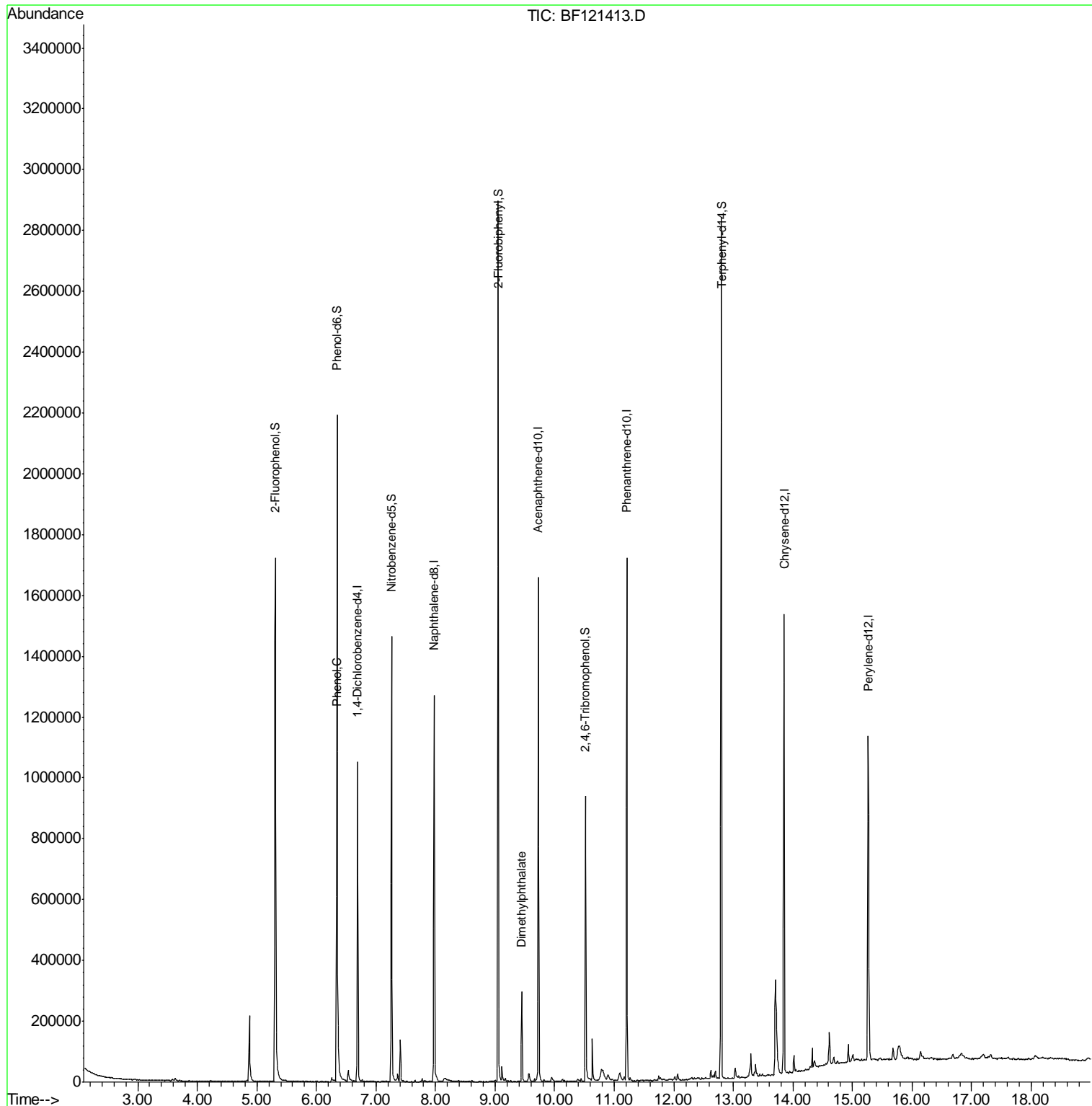
Internal Standards	R.T.	QIon	Response	Conc	Units	Dev(Min)
1) 1,4-Dichlorobenzene-d4	6.69	152	149504	20.00	ng	0.00
21) Naphthalene-d8	7.97	136	600682	20.00	ng	0.00
39) Acenaphthene-d10	9.73	164	315947	20.00	ng	0.00
64) Phenanthrene-d10	11.21	188	625609	20.00	ng	0.00
76) Chrysene-d12	13.85	240	519623	20.00	ng	0.00
86) Perylene-d12	15.26	264	461985	20.00	ng	0.01
System Monitoring Compounds						
5) 2-Fluorophenol	5.31	112	592265	64.96	ng	0.01
7) Phenol-d6	6.35	99	815392	70.05	ng	0.00
23) Nitrobenzene-d5	7.26	82	508720	47.90	ng	0.00
42) 2,4,6-Tribromophenol	10.52	330	128244	34.83	ng	0.00
45) 2-Fluorobiphenyl	9.05	172	915876	50.38	ng	0.00
79) Terphenyl-d14	12.80	244	929627	34.96	ng	0.00
Target Compounds						
10) Phenol	6.36	94	26471	2.169	ng	89
50) Dimethylphthalate	9.45	163	122451	5.327	ng	99

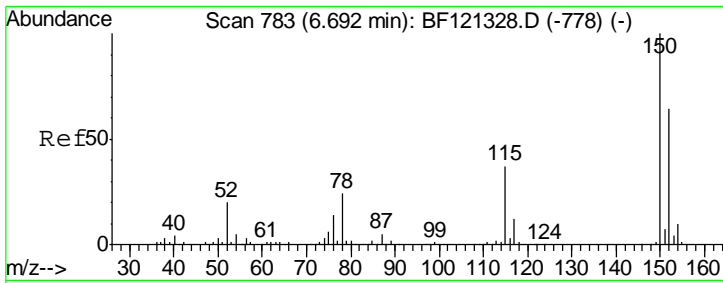
(#) = qualifier out of range (m) = manual integration (+) = signals summed

Data Path : Z:\SVOASRV\HPCHEM1\BNA F\DATA\BF082420\
 Data File : BF121413.D
 Acq On : 24 Aug 2020 22:32
 Operator : JU/CG
 Sample : L3719-04
 Misc :
 ALS Vial : 13 Sample Multiplier: 1

Instrument :
 BNA_F
 ClientSampleId :
 20200510-AMENDED-COMP-A

Quant Time: Aug 25 04:48:00 2020
 Quant Method : Z:\SVOASRV\HPCHEM1\BNA F\METHODS\8270-BF081920.M
 Quant Title : ASP BNA STANDARDS FOR 5 POINT CALIBRATION
 QLast Update : Thu Aug 20 04:56:10 2020
 Response via : Initial Calibration



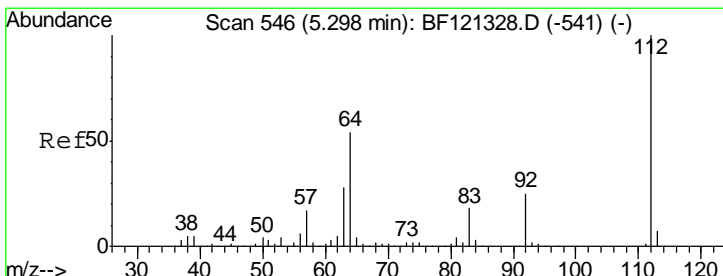
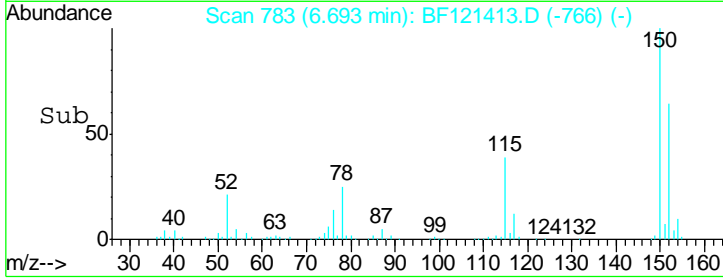
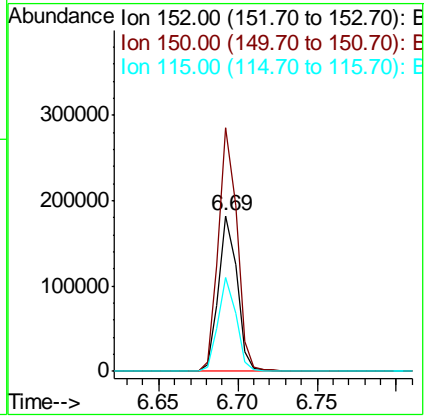
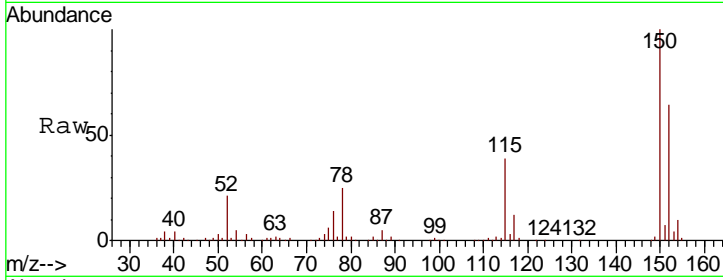


#1
 1,4-Dichlorobenzene-d4
 Concen: 20.000 ng
 RT: 6.69 min Scan# 783
 Delta R.T. 0.00 min
 Lab File: BF121413.D
 Acq: 24 Aug 2020 22:32

Instrument :
 BNA_F
ClientSampleId :
 20200510-AMENDED-COMP-A

Tgt Ion:152 Resp: 149504

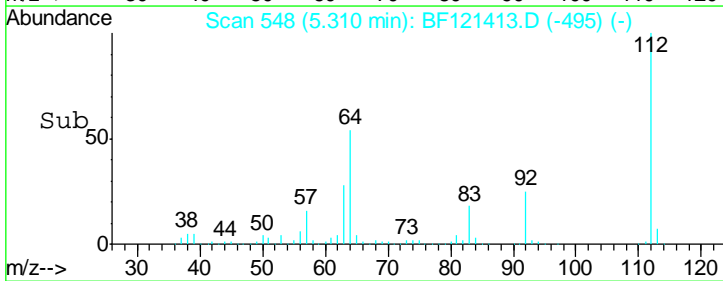
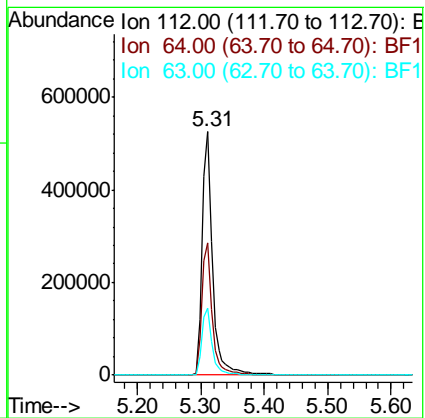
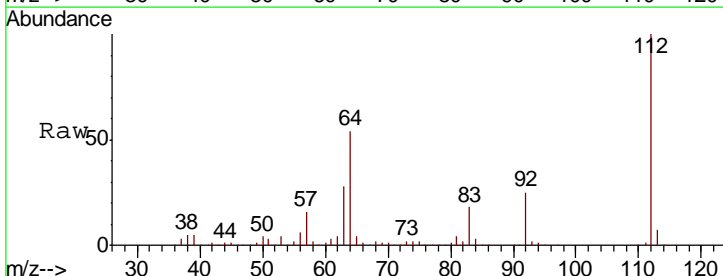
Ion	Ratio	Lower	Upper
152	100		
150	156.5	124.8	187.2
115	60.6	46.1	69.1

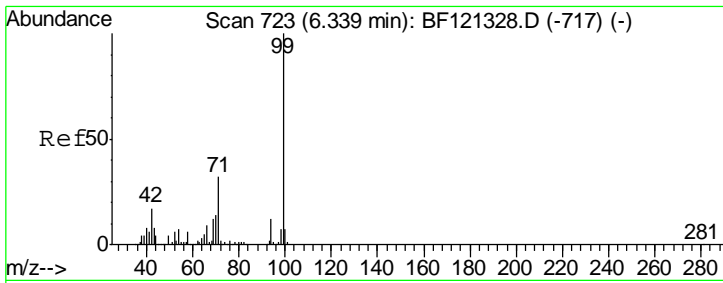


#5
 2-Fluorophenol
 Concen: 64.959 ng
 RT: 5.31 min Scan# 548
 Delta R.T. 0.01 min
 Lab File: BF121413.D
 Acq: 24 Aug 2020 22:32

Tgt Ion:112 Resp: 592265

Ion	Ratio	Lower	Upper
112	100		
64	54.4	43.5	65.3
63	27.7	22.0	33.0

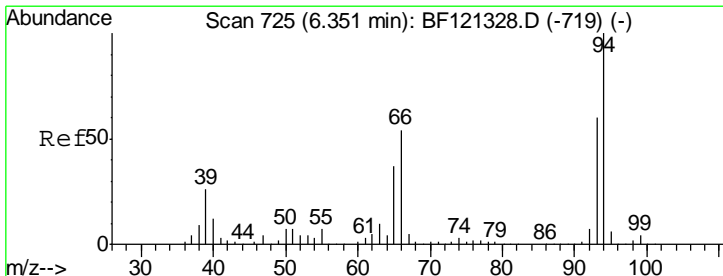
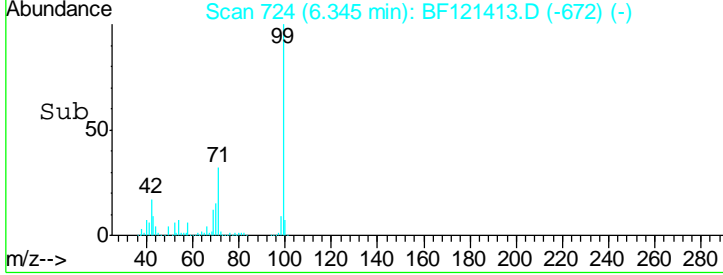
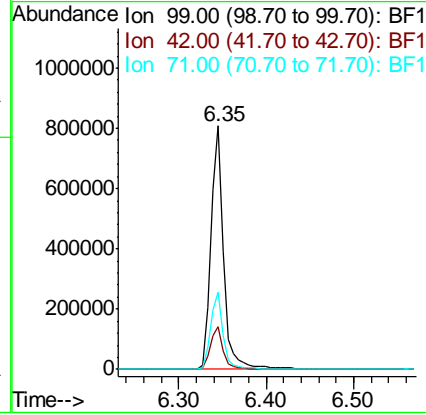
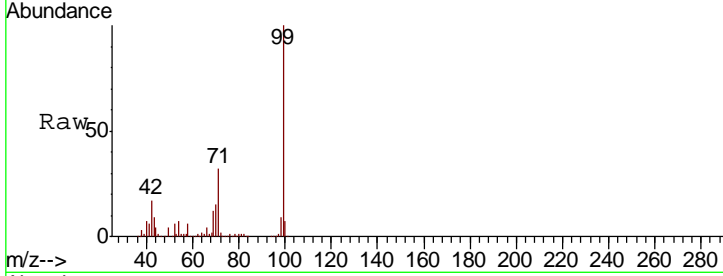




#7
 Phenol-d6
 Concen: 70.054 ng
 RT: 6.35 min Scan# 724
 Delta R.T. 0.01 min
 Lab File: BF121413.D
 Acq: 24 Aug 2020 22:32

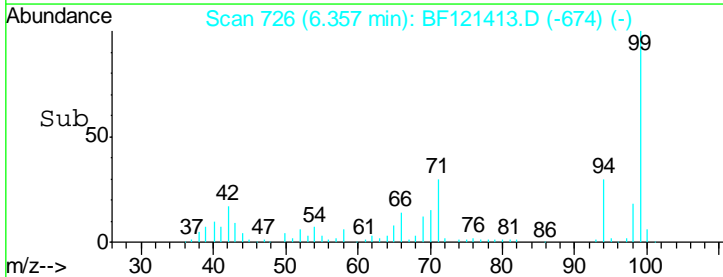
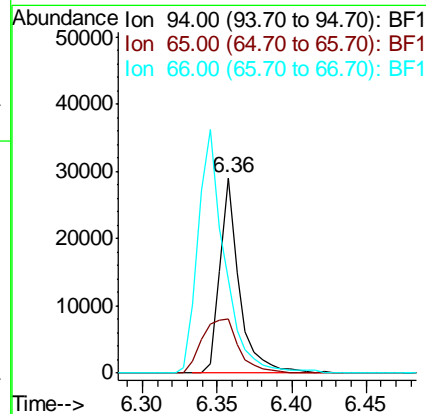
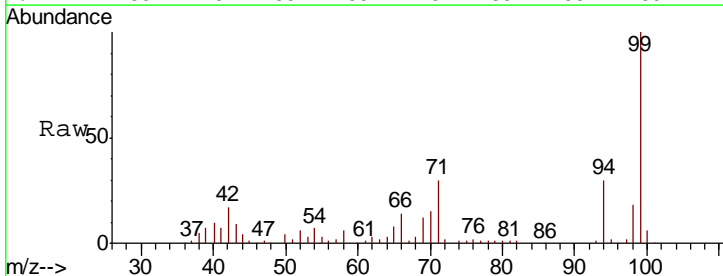
Instrument :
 BNA_F
 ClientSampled :
 20200510-AMENDED-COMP-A

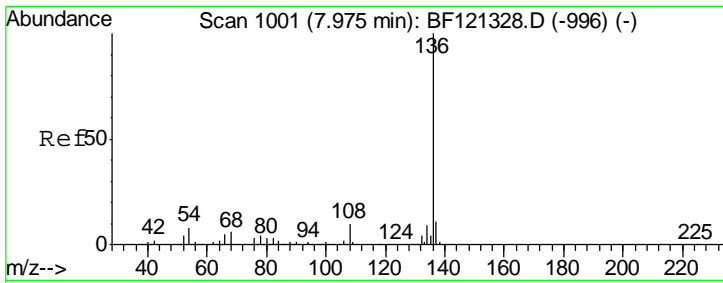
Tgt Ion	Resp	Lower	Upper
99	100		
42	17.4	13.5	20.3
71	31.7	25.2	37.8



#10
 Phenol
 Concen: 2.169 ng
 RT: 6.36 min Scan# 726
 Delta R.T. 0.01 min
 Lab File: BF121413.D
 Acq: 24 Aug 2020 22:32

Tgt Ion	Resp	Lower	Upper
94	100		
65	27.9	16.6	56.6
66	48.1	34.3	74.3

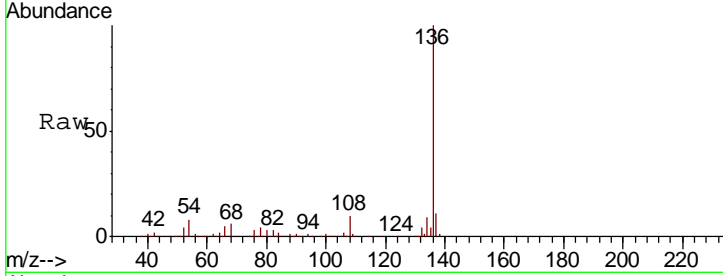




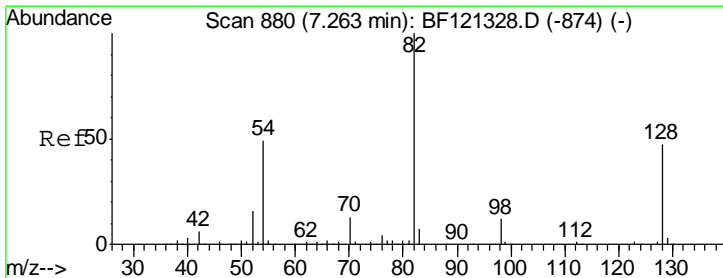
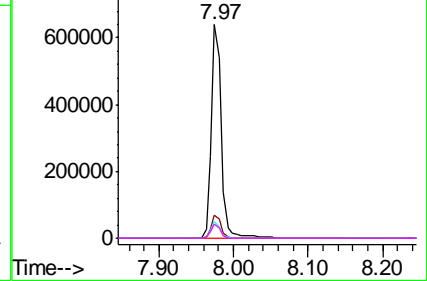
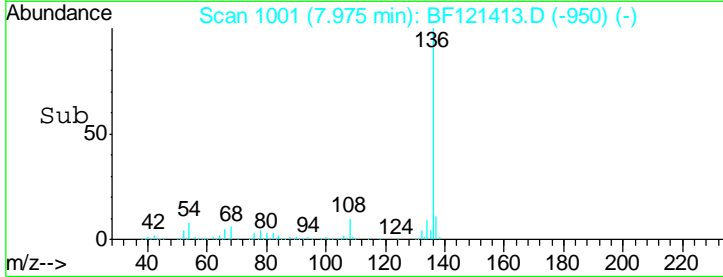
#21
 Naphthalene-d8
 Concen: 20.000 ng
 RT: 7.97 min Scan# 1001
 Delta R.T. 0.00 min
 Lab File: BF121413.D
 Acq: 24 Aug 2020 22:32

Instrument :
 BNA_F
 ClientSampleId :
 20200510-AMENDED-COMP-A

Tgt Ion	Resp	Lower	Upper
136	600682		
137	11.0	8.9	13.3
54	7.9	6.1	9.1
68	6.4	5.0	7.4

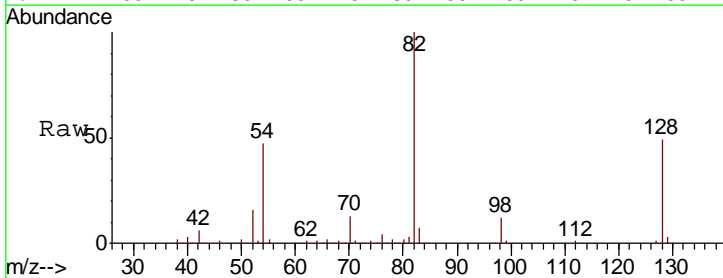


Abundance Ion 136.00 (135.70 to 136.70): E
 Ion 137.00 (136.70 to 137.70): E
 Ion 54.00 (53.70 to 54.70): BF1
 Ion 68.00 (67.70 to 68.70): BF1

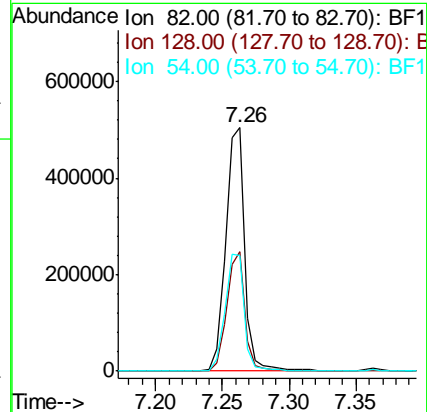
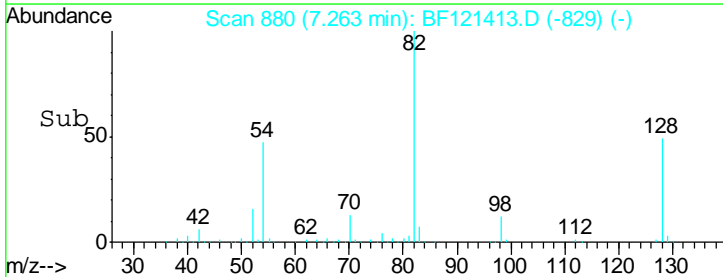


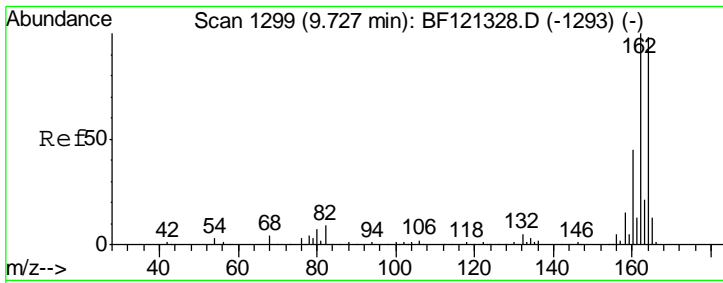
#23
 Nitrobenzene-d5
 Concen: 47.898 ng
 RT: 7.26 min Scan# 880
 Delta R.T. 0.00 min
 Lab File: BF121413.D
 Acq: 24 Aug 2020 22:32

Tgt Ion	Resp	Lower	Upper
82	508720		
128	49.3	37.9	56.9
54	47.4	39.0	58.4



Abundance Ion 82.00 (81.70 to 82.70): BF1
 Ion 128.00 (127.70 to 128.70): E
 Ion 54.00 (53.70 to 54.70): BF1

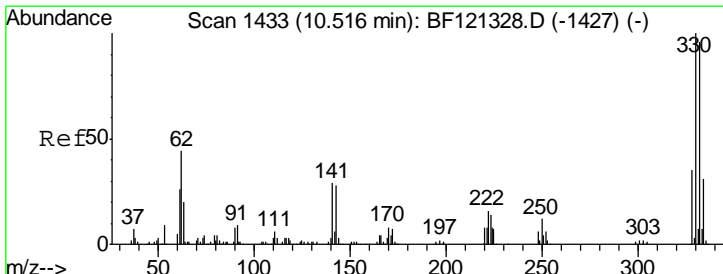
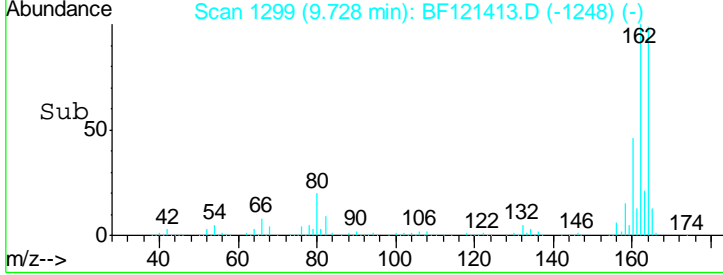
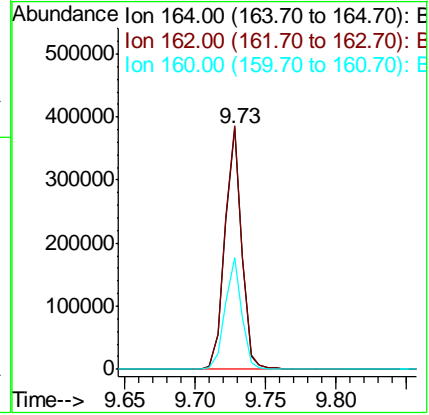
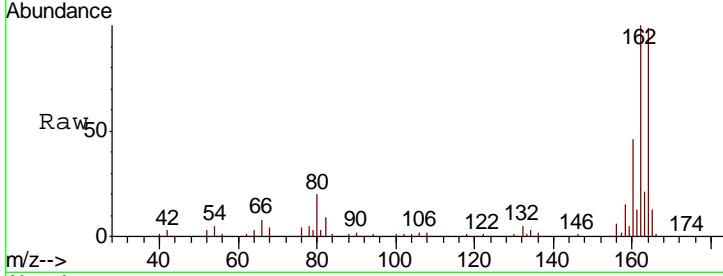




#39
 Acenaphthene-d10
 Concen: 20.000 ng
 RT: 9.73 min Scan# 1299
 Delta R.T. 0.00 min
 Lab File: BF121413.D
 Acq: 24 Aug 2020 22:32

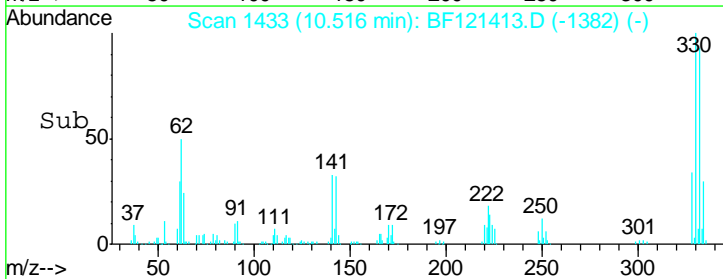
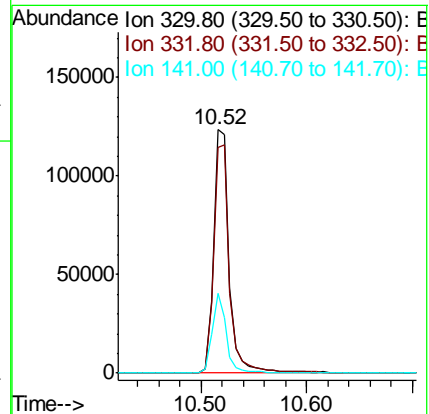
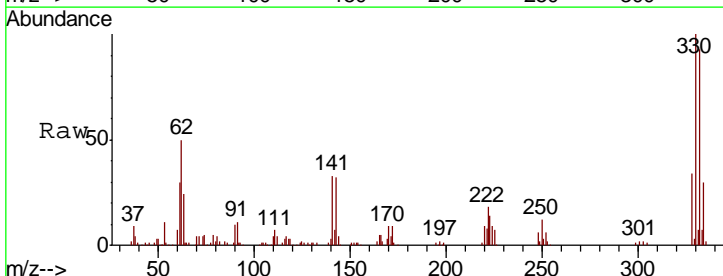
Instrument :
 BNA_F
ClientSampleId :
 20200510-AMENDED-COMP-A

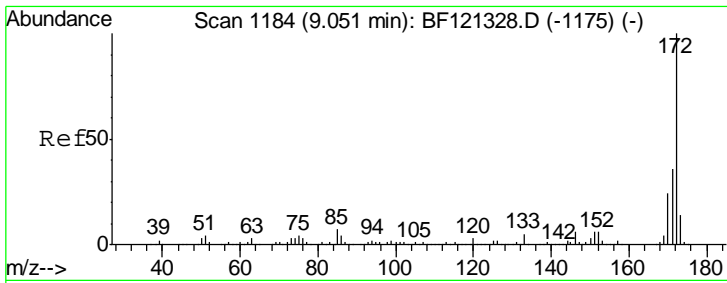
Tgt Ion	Resp	Lower	Upper
164	100		
162	101.0	81.7	122.5
160	46.5	37.0	55.4



#42
 2,4,6-Tribromophenol
 Concen: 34.832 ng
 RT: 10.52 min Scan# 1433
 Delta R.T. 0.00 min
 Lab File: BF121413.D
 Acq: 24 Aug 2020 22:32

Tgt Ion	Resp	Lower	Upper
330	100		
332	93.7	76.9	115.3
141	29.8	22.8	34.2

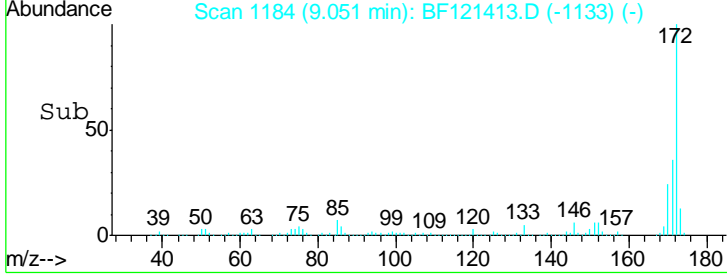
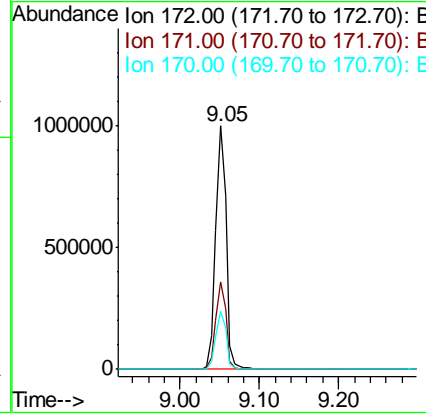
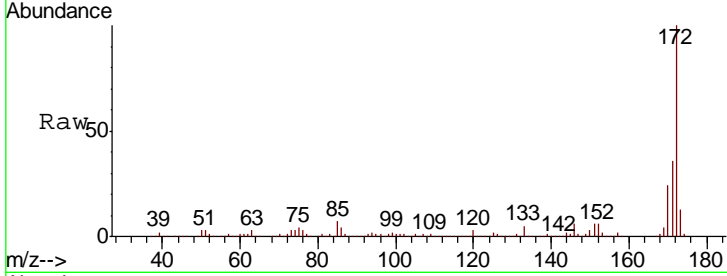




#45
 2-Fluorobiphenyl
 Concen: 50.384 ng
 RT: 9.05 min Scan# 1184
 Delta R.T. 0.00 min
 Lab File: BF121413.D
 Acq: 24 Aug 2020 22:32

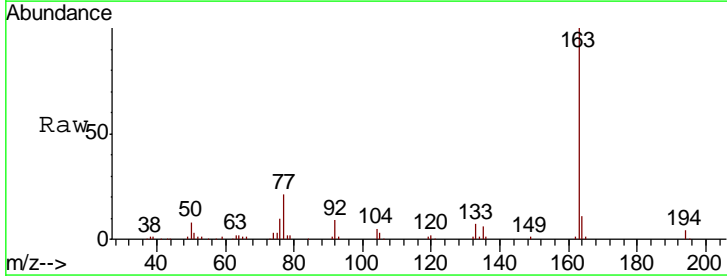
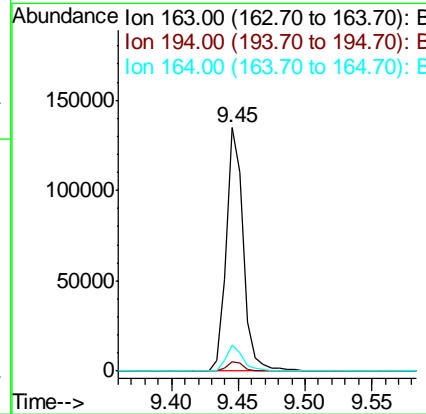
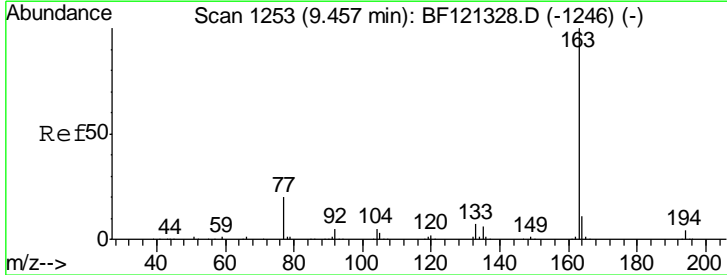
Instrument :
 BNA_F
ClientSampled :
 20200510-AMENDED-COMP-A

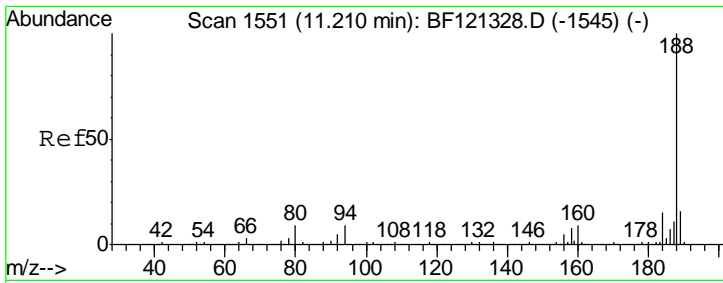
Tgt Ion	Resp	Lower	Upper
172	100		
171	36.2	29.0	43.6
170	24.0	19.4	29.2



#50
 Dimethylphthalate
 Concen: 5.327 ng
 RT: 9.45 min Scan# 1251
 Delta R.T. -0.01 min
 Lab File: BF121413.D
 Acq: 24 Aug 2020 22:32

Tgt Ion	Resp	Lower	Upper
163	100		
194	3.9	3.0	4.6
164	10.8	8.4	12.6

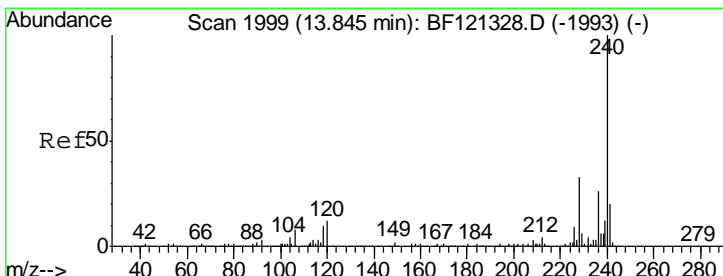
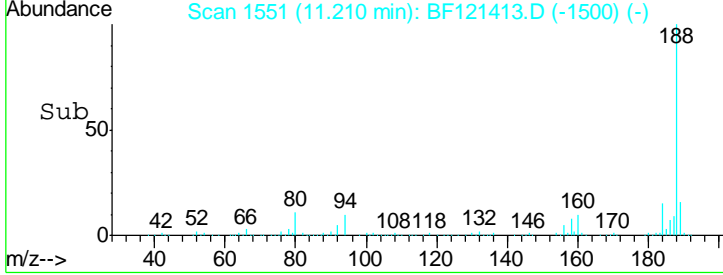
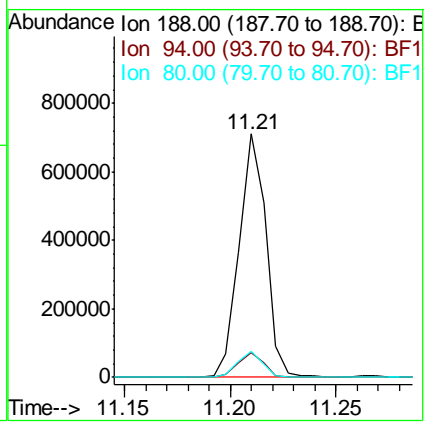
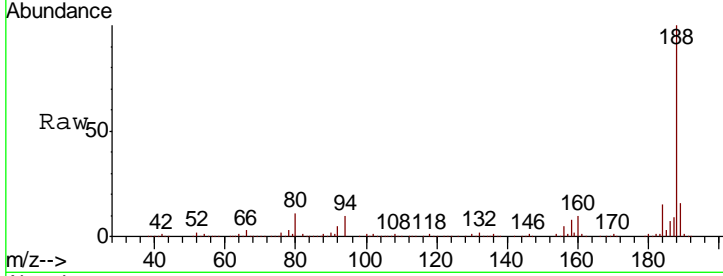




#64
 Phenanthrene-d10
 Concen: 20.000 ng
 RT: 11.21 min Scan# 1551
 Delta R.T. 0.00 min
 Lab File: BF121413.D
 Acq: 24 Aug 2020 22:32

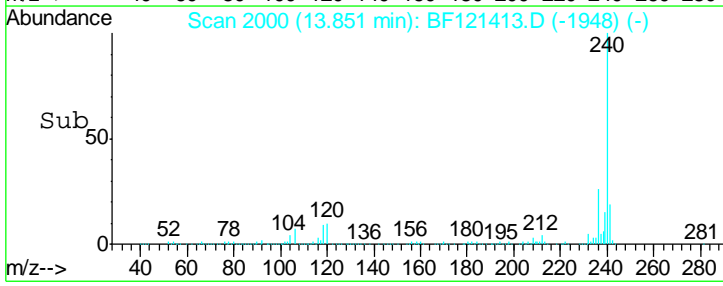
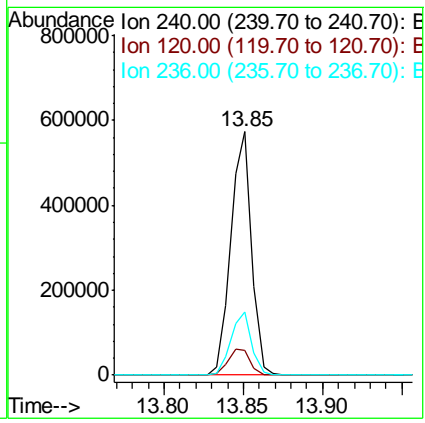
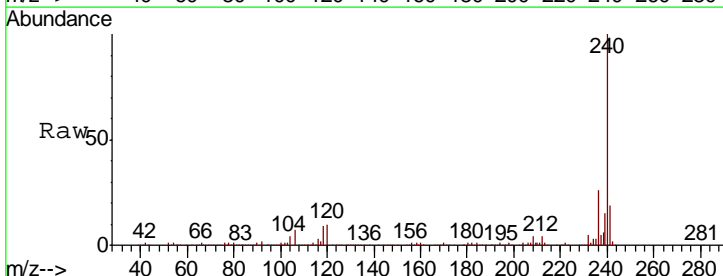
Instrument :
 BNA_F
 ClientSampleId :
 20200510-AMENDED-COMP-A

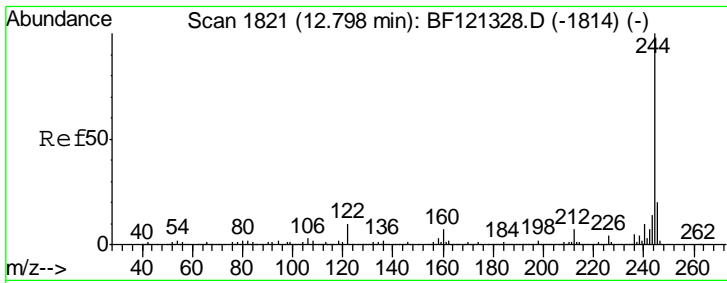
Tgt Ion	Resp	Lower	Upper
188	100		
94	9.9	7.2	10.8
80	10.5	7.4	11.0



#76
 Chrysene-d12
 Concen: 20.000 ng
 RT: 13.85 min Scan# 2000
 Delta R.T. 0.01 min
 Lab File: BF121413.D
 Acq: 24 Aug 2020 22:32

Tgt Ion	Resp	Lower	Upper
240	100		
120	10.3	9.6	14.4
236	26.1	20.6	31.0

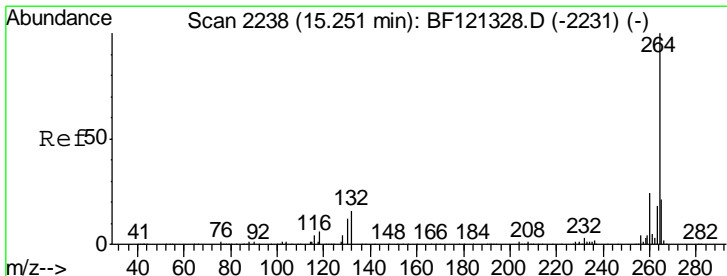
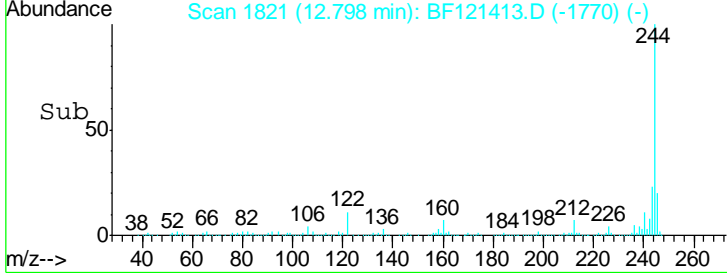
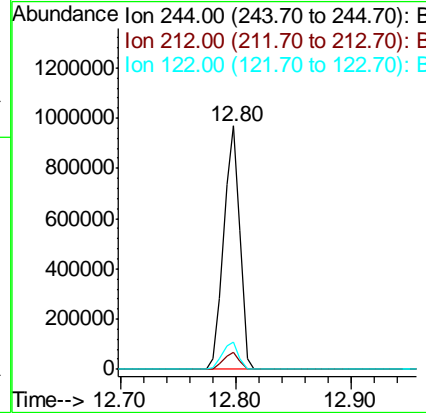
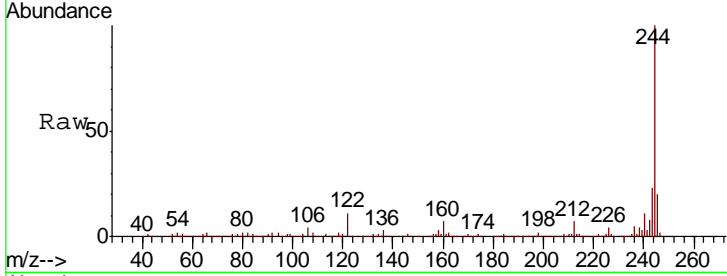




#79
 Terphenyl-d14
 Concen: 34.961 ng
 RT: 12.80 min Scan# 1821
 Delta R.T. 0.00 min
 Lab File: BF121413.D
 Acq: 24 Aug 2020 22:32

Instrument :
 BNA_F
ClientSampled :
 20200510-AMENDED-COMP-A

Tgt Ion	Resp	Lower	Upper
244	100		
212	6.9	5.4	8.0
122	11.0	7.8	11.8



#86
 Perylene-d12
 Concen: 20.000 ng
 RT: 15.26 min Scan# 2240
 Delta R.T. 0.01 min
 Lab File: BF121413.D
 Acq: 24 Aug 2020 22:32

Tgt Ion	Resp	Lower	Upper
264	100		
260	24.1	19.5	29.3
265	21.8	17.1	25.7

