

Data Path : Z:\svoasrv\HPCHEM1\BNA_F\Data\BF090123\
 Data File : BF135068.D
 Acq On : 01 Sep 2023 10:47
 Operator : CG\JU
 Sample : PB155248BL
 Misc :
 ALS Vial : 3 Sample Multiplier: 1

Instrument :
 BNA_F
 ClientSampleId :
 PB155248BL

Integration Parameters: rteint.p
 Integrator: RTE
 Smoothing : ON Filtering: 5
 Sampling : 1 Min Area: 3 % of largest Peak
 Start Thrs: 0.2 Max Peaks: 100
 Stop Thrs : 0 Peak Location: TOP

If leading or trailing edge < 100 prefer < Baseline drop else tangent >
 Peak separation: 5

Method : Z:\svoasrv\HPCHEM1\BNA_F\Methods\8270-BF083023.M
 Title : ASP BNA STANDARDS FOR 5 POINT CALIBRATION

Signal : TIC: BF135068.D\data.ms

peak #	R.T. min	first scan	max scan	last scan	PK TY	peak height	corr. area	corr. % max.	% of total
1	5.028	496	500	512	rVB	139043	201037	4.57%	0.765%
2	5.416	560	566	569	rBV	3380383	3503997	79.71%	13.335%
3	6.416	730	736	739	rBV	3073220	3464922	78.82%	13.186%
4	6.769	793	796	800	rBV	802583	684692	15.57%	2.606%
5	7.334	886	892	895	rBV	2021146	2302455	52.37%	8.762%
6	8.051	1009	1014	1017	rBV	999217	940270	21.39%	3.578%
7	9.133	1191	1198	1201	rBV	3980826	4028421	91.63%	15.330%
8	9.810	1307	1313	1316	rBV	1206805	1051589	23.92%	4.002%
9	10.604	1442	1448	1451	rBV	2748522	2646655	60.20%	10.072%
10	11.304	1562	1567	1570	rBV	1224836	1114715	25.36%	4.242%
11	12.904	1834	1839	1842	rBV	4229319	4396181	100.00%	16.730%
12	13.957	2014	2018	2025	rBV	1207518	1047539	23.83%	3.986%
13	15.427	2262	2268	2273	rBV	719273	894836	20.35%	3.405%

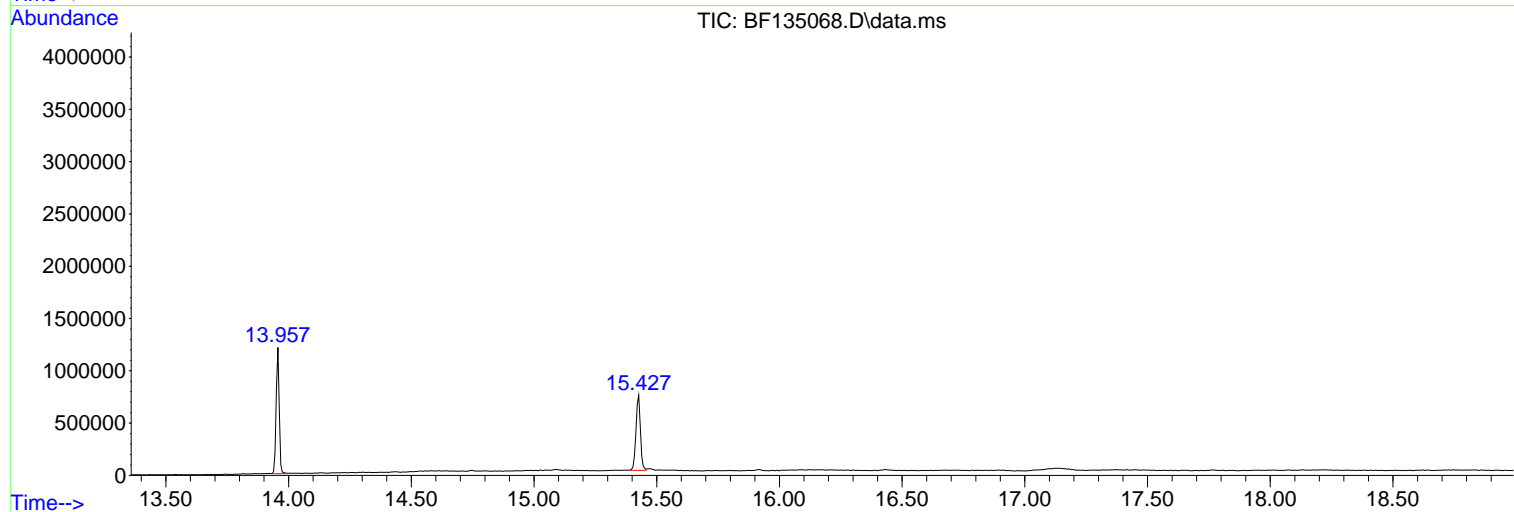
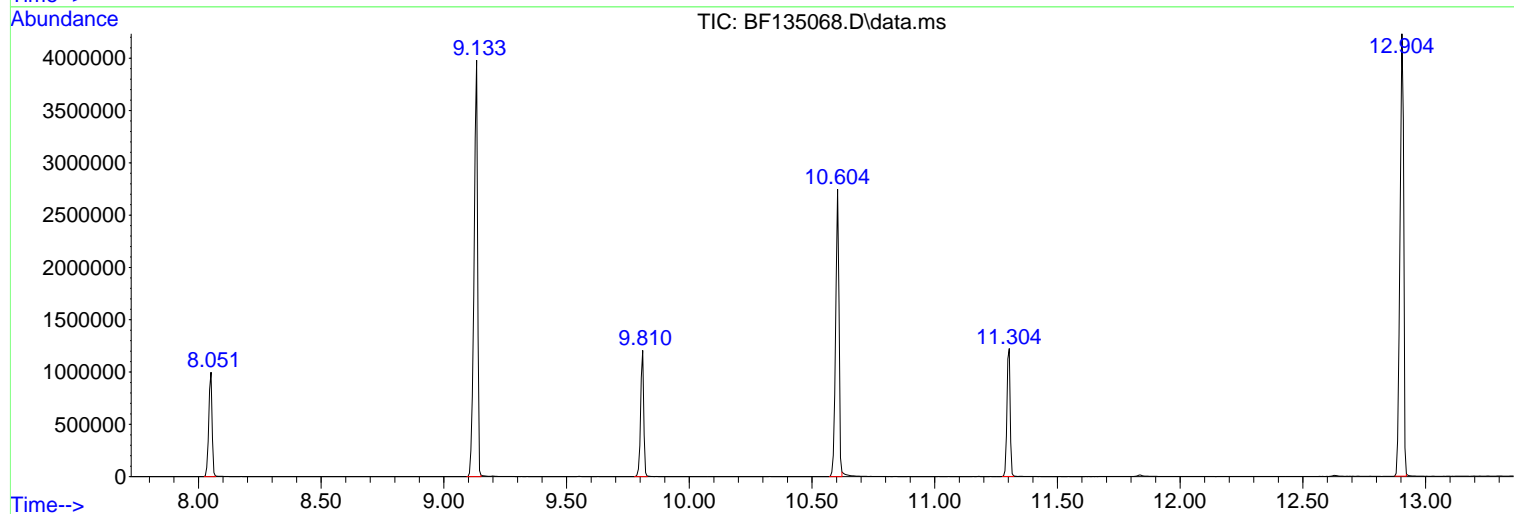
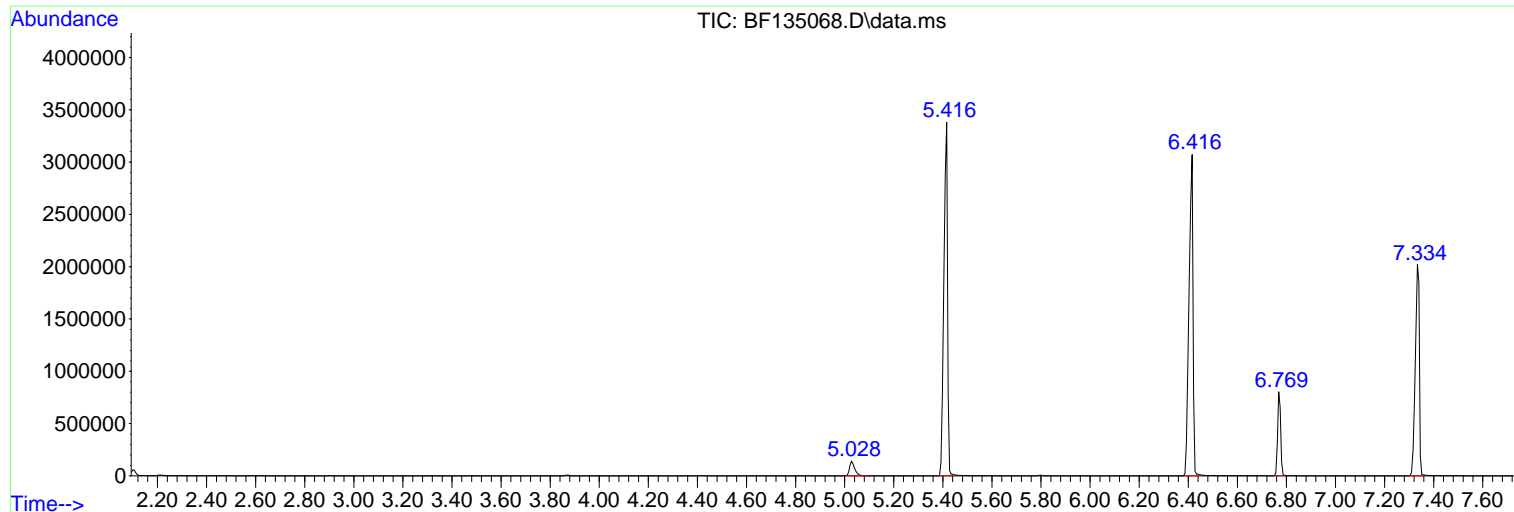
Sum of corrected areas: 26277309

Data Path : Z:\svoasrv\HPCHEM1\BNA_F\Data\BF090123\
Data File : BF135068.D
Acq On : 01 Sep 2023 10:47
Operator : CG\JU
Sample : PB155248BL
Misc :
ALS Vial : 3 Sample Multiplier: 1

Instrument :
BNA_F
ClientSampleId :
PB155248BL

Quant Method : Z:\svoasrv\HPCHEM1\BNA_F\Methods\8270-BF083023.M
Quant Title : ASP BNA STANDARDS FOR 5 POINT CALIBRATION

TIC Library : C:\Database\NIST20.L
TIC Integration Parameters: LSCINT.P



Data Path : Z:\svoasrv\HPCHEM1\BNA_F\Data\BF090123\
 Data File : BF135068.D
 Acq On : 01 Sep 2023 10:47
 Operator : CG\JU
 Sample : PB155248BL
 Misc :
 ALS Vial : 3 Sample Multiplier: 1

Instrument :
 BNA_F
 ClientSampleId :
 PB155248BL

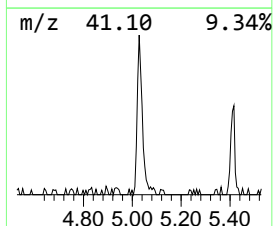
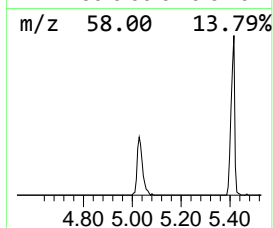
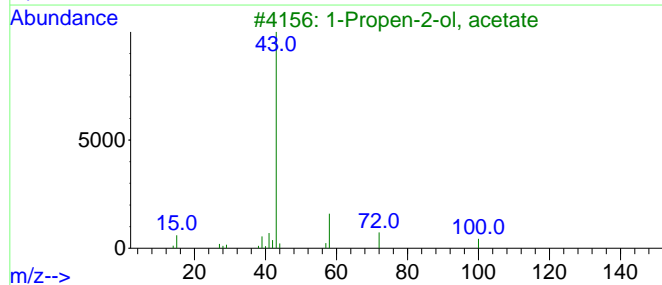
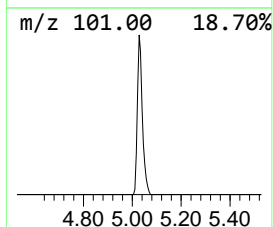
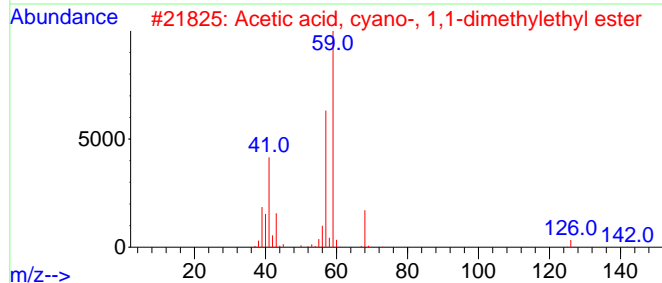
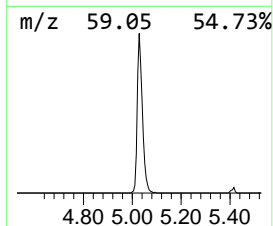
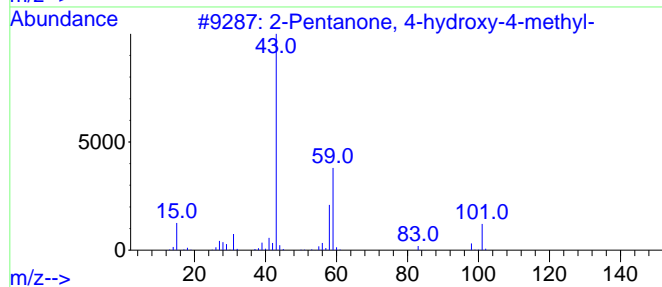
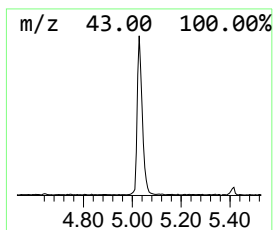
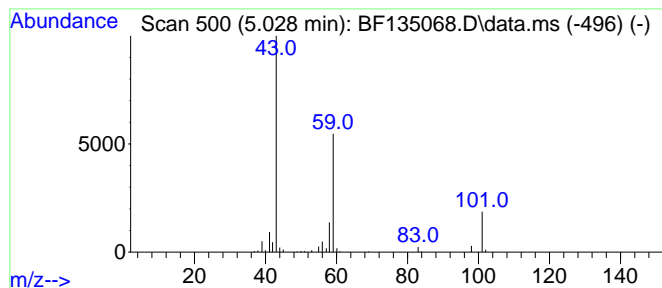
Quant Method : Z:\svoasrv\HPCHEM1\BNA_F\Methods\8270-BF083023.M
 Quant Title : ASP BNA STANDARDS FOR 5 POINT CALIBRATION

TIC Library : C:\Database\NIST20.L
 TIC Integration Parameters: LSCINT.P

 Peak Number 1 2-Pentanone, 4-hydroxy-4-me... Concentration Rank 1

R.T.	EstConc	Area	Relative to ISTD	R.T.
5.028	5.87 ng	201037	1,4-Dichlorobenzene-d4	6.769

Hit#	of 5	Tentative ID	MW	MolForm	CAS#	Qual
1		2-Pentanone, 4-hydroxy-4-methyl-	116	C6H12O2	000123-42-2	64
2		Acetic acid, cyano-, 1,1-dimethy...	141	C7H11NO2	001116-98-9	23
3		1-Propen-2-ol, acetate	100	C5H8O2	000108-22-5	12
4		2,3-Butanedione, monooxime	101	C4H7NO2	000057-71-6	9
5		Morpholine, 4-methyl-	101	C5H11NO	000109-02-4	9



Data Path : Z:\svoasrv\HPCHEM1\BNA_F\Data\BF090123\
Data File : BF135068.D
Acq On : 01 Sep 2023 10:47
Operator : CG\JU
Sample : PB155248BL
Misc :
ALS Vial : 3 Sample Multiplier: 1

Instrument :
BNA_F
ClientSampleId :
PB155248BL

Quant Method : Z:\svoasrv\HPCHEM1\BNA_F\Methods\8270-BF083023.M
Quant Title : ASP BNA STANDARDS FOR 5 POINT CALIBRATION

TIC Library : C:\Database\NIST20.L
TIC Integration Parameters: LSCINT.P

TIC Top Hit name	RT	EstConc	Units	Response	--Internal Standard--			
					#	RT	Resp	Conc
2-Pentanone, 4-...	5.028	5.9	ng	201037	1	6.769	684692	20.0