

Data Path : Z:\SVOASRV\HPCHEM1\BNA F\DATA\BF090819\  
 Data File : BF116890.D  
 Acq On : 9 Sep 2019 1:28  
 Operator : HP/JU  
 Sample : K4689-02  
 Misc :  
 ALS Vial : 10 Sample Multiplier: 1

Instrument :  
 BNA\_F  
 ClientSampled :  
 MW-2A

Manual Integrations  
 APPROVED

mohammad  
 9/12/2019 9:26:31 AM

Quant Time: Sep 09 03:32:19 2019  
 Quant Method : Z:\SVOASRV\HPCHEM1\BNA F\METHODS\8270-BF083019.M  
 Quant Title : ASP BNA STANDARDS FOR 5 POINT CALIBRATION  
 QLast Update : Fri Aug 30 20:02:30 2019  
 Response via : Initial Calibration

Internal Standards	R.T.	QIon	Response	Conc	Units	Dev(Min)
1) 1,4-Dichlorobenzene-d4	6.85	152	83733	20.00	ng	0.00
21) Naphthalene-d8	8.16	136	261781	20.00	ng	0.02
39) Acenaphthene-d10	9.88	164	183153	20.00	ng	0.00
64) Phenanthrene-d10	11.36	188	292054	20.00	ng	0.00
76) Chrysene-d12	13.99	240	165463	20.00	ng	0.00
87) Perylene-d12	15.45	264	178786	20.00	ng	0.00

## System Monitoring Compounds

5) 2-Fluorophenol	5.47	112	287999	55.72	ng	0.00
7) Phenol-d6	6.48	99	249910	36.82	ng	0.00
23) Nitrobenzene-d5	7.41	82	500930	109.24	ng	0.00
42) 2,4,6-Tribromophenol	10.67	330	180675	147.56	ng	0.00
45) 2-Fluorobiphenyl	9.20	172	913103	84.10	ng	0.00
79) Terphenyl-d14	12.94	244	785999	87.88	ng	0.00

## Target Compounds

Target Compounds	R.T.	QIon	Response	Conc	Units	Qvalue
10) Phenol	6.49	94	26823	3.569	ng	85
17) 2-Methylphenol	7.10	107	40952	8.291	ng	# 90
20) 3+4-Methylphenols	7.25	107	28530	4.968	ng	88
27) 2,4-Dimethylphenol	7.80	122	85932	24.539	ng	98
31) Naphthalene	8.20	128	15415366	1238.386	ng	# 91
37) 2-Methylnaphthalene	8.87	142	4661281	562.801	ng	98
38) 1-Methylnaphthalene	8.98	142	5349818m	684.258	ng	
46) 1,1'-Biphenyl	9.31	154	1290739	92.873	ng	98
50) Dimethylphthalate	9.60	163	63590	5.029	ng	# 95
52) Acenaphthene	9.93	154	1937256	189.484	ng	99
55) Dibenzofuran	10.10	168	1819487	126.242	ng	96
58) Fluorene	10.43	166	1082030	98.528	ng	98
71) Phenanthrene	11.39	178	1190069	73.201	ng	98
72) Anthracene	11.44	178	199601	12.196	ng	100
73) Carbazole	11.59	167	335116	21.497	ng	99
75) Fluoranthene	12.57	202	154627	9.678	ng	99
78) Pyrene	12.80	202	106344	7.230	ng	95

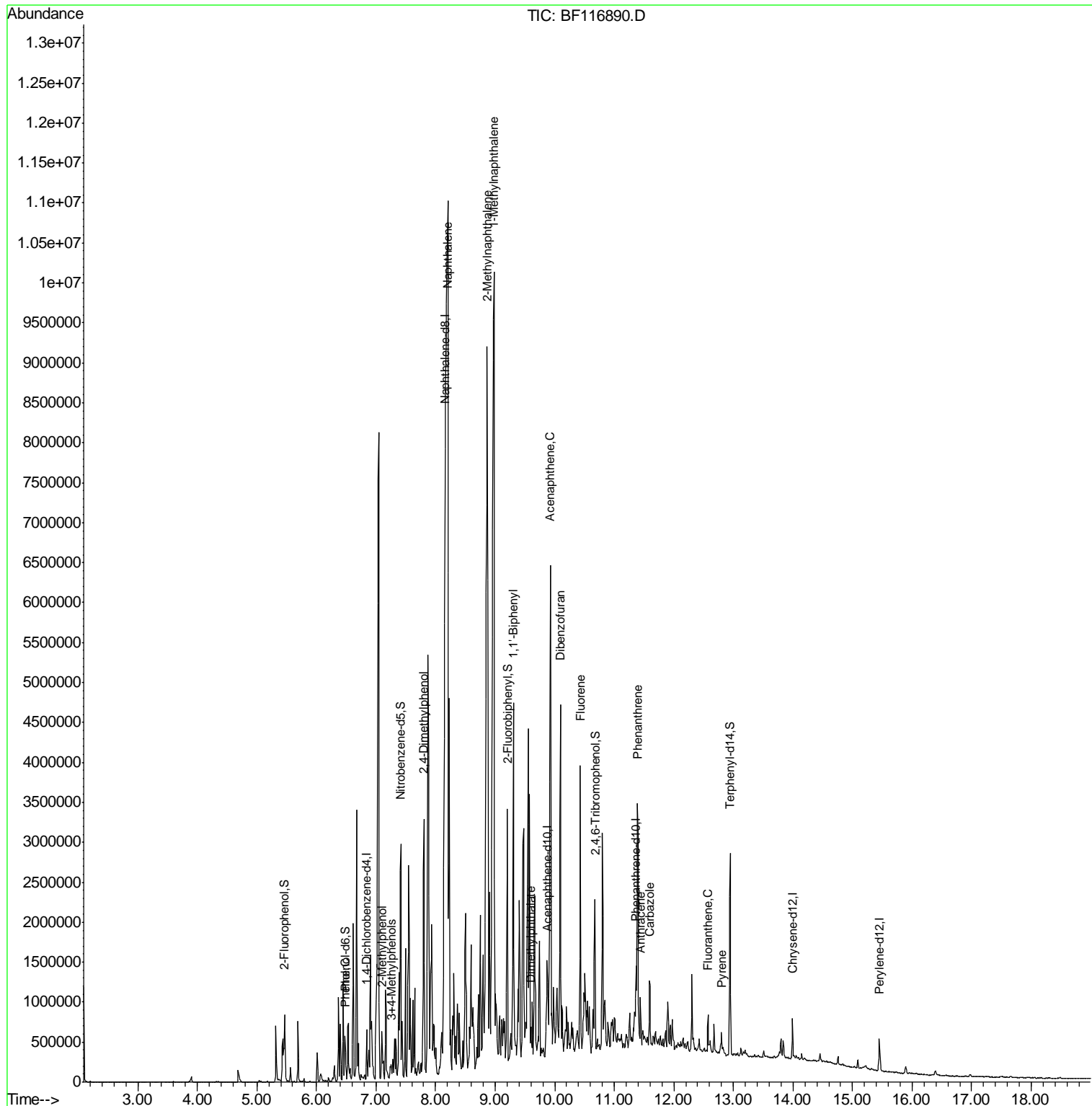
(#) = qualifier out of range (m) = manual integration (+) = signals summed

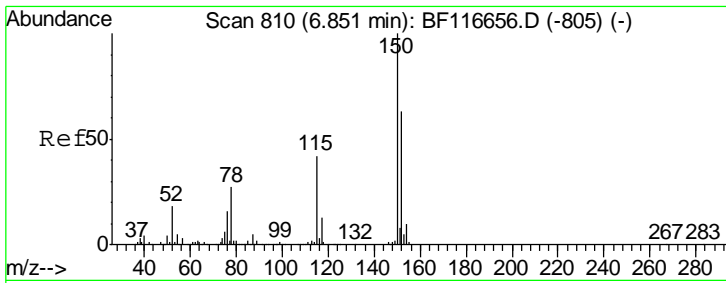
Data Path : Z:\SVOASRV\HPCHEM1\BNA F\DATA\BF090819\  
 Data File : BF116890.D  
 Acq On : 9 Sep 2019 1:28  
 Operator : HP/JU  
 Sample : K4689-02  
 Misc :  
 ALS Vial : 10 Sample Multiplier: 1

Instrument :  
 BNA\_F  
 Client Sampled :  
 MW-2A

Manual Integrations  
 APPROVED  
 mohammad  
 9/12/2019 9:26:31 AM

Quant Time: Sep 09 03:32:19 2019  
 Quant Method : Z:\SVOASRV\HPCHEM1\BNA F\METHODS\8270-BF083019.M  
 Quant Title : ASP BNA STANDARDS FOR 5 POINT CALIBRATION  
 QLast Update : Fri Aug 30 20:02:30 2019  
 Response via : Initial Calibration





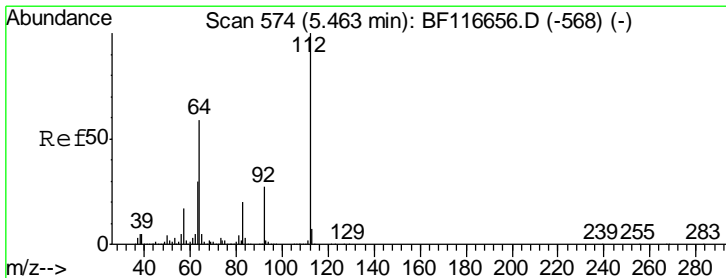
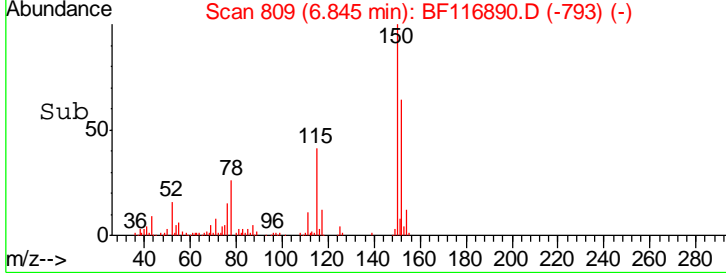
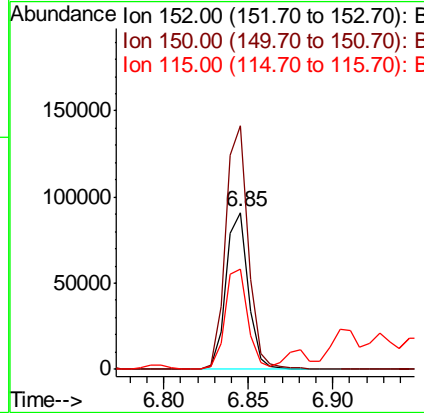
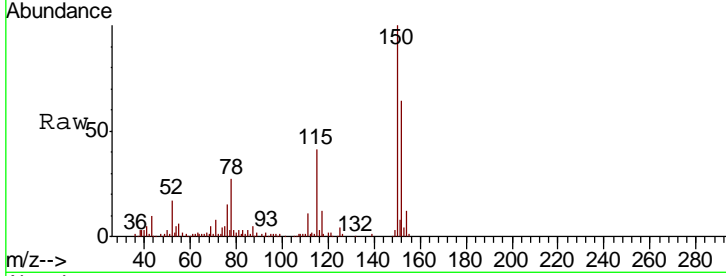
#1  
 1,4-Dichlorobenzene-d4  
 Concen: 20.000 ng  
 RT: 6.85 min Scan# 809  
 Delta R.T. -0.01 min  
 Lab File: BF116890.D  
 Acq: 9 Sep 2019 1:28

Instrument :  
 BNA\_F  
 ClientSampled :  
 MW-2A

Tgt Ion	Resp	Lower	Upper
152	83733		
152	100		
150	155.5	124.4	186.6
115	64.2	49.9	74.9

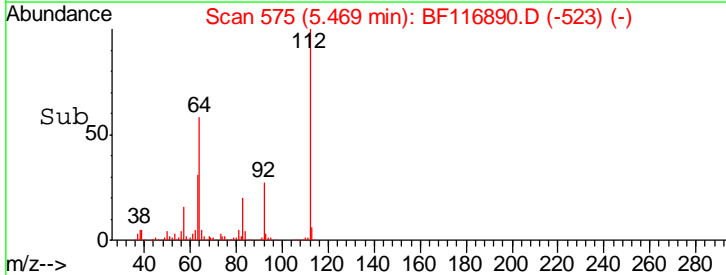
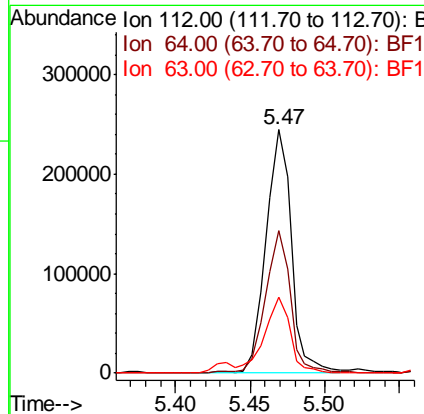
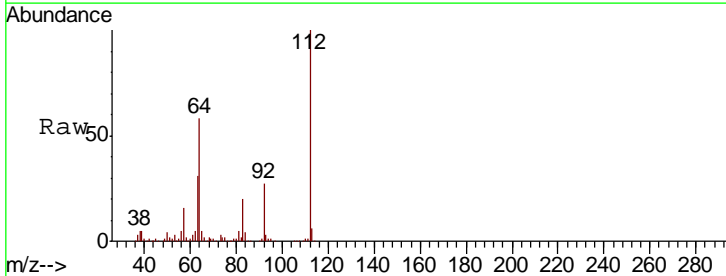
Manual Integrations  
 APPROVED

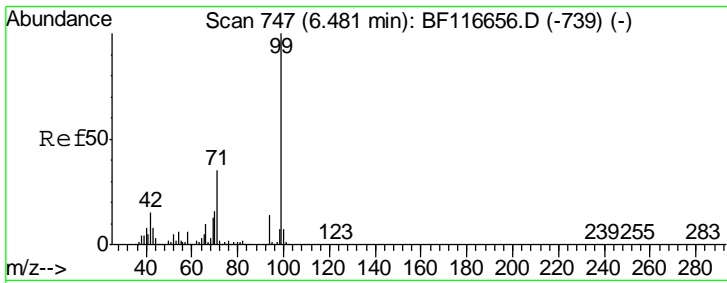
mohammad  
 9/12/2019 9:26:31 AM



#5  
 2-Fluorophenol  
 Concen: 55.722 ng  
 RT: 5.47 min Scan# 575  
 Delta R.T. 0.01 min  
 Lab File: BF116890.D  
 Acq: 9 Sep 2019 1:28

Tgt Ion	Resp	Lower	Upper
112	287999		
112	100		
64	58.3	47.1	70.7
63	31.0	24.9	37.3





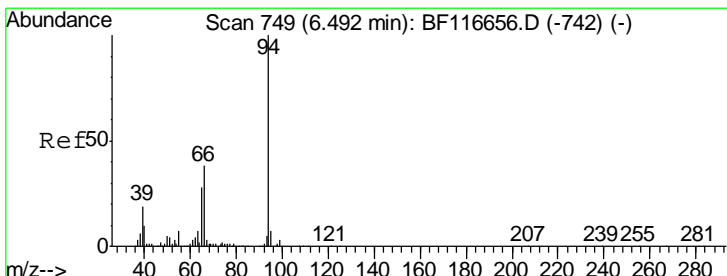
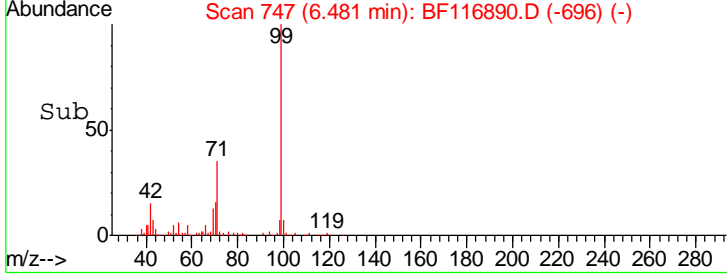
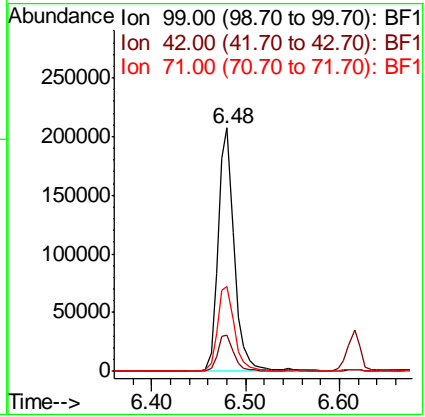
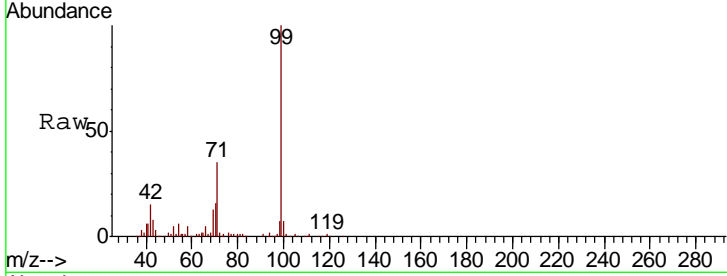
#7  
 Phenol-d6  
 Concen: 36.823 ng  
 RT: 6.48 min Scan# 747  
 Delta R.T. 0.00 min  
 Lab File: BF116890.D  
 Acq: 9 Sep 2019 1:28

**Instrument :**  
 BNA\_F  
**ClientSampled :**  
 MW-2A

Tgt Ion	Resp	Lower	Upper
99	249910		
42	14.8	13.7	20.5
71	35.1	30.8	46.2

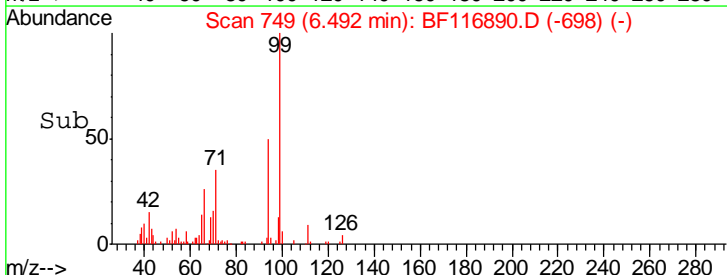
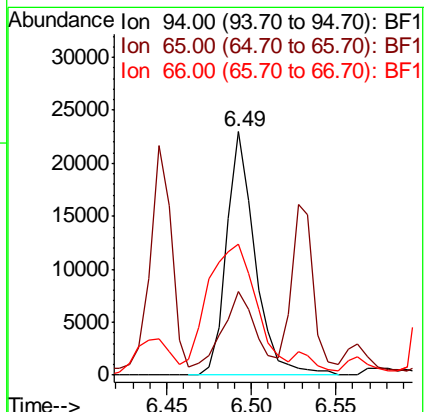
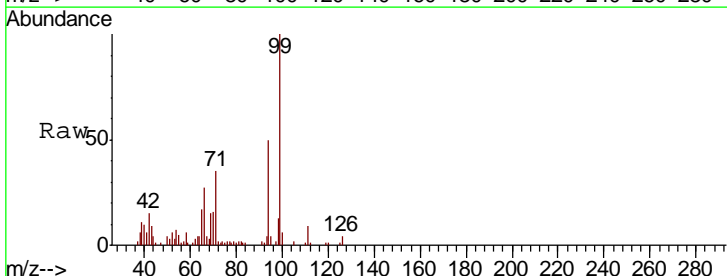
**Manual Integrations**  
**APPROVED**

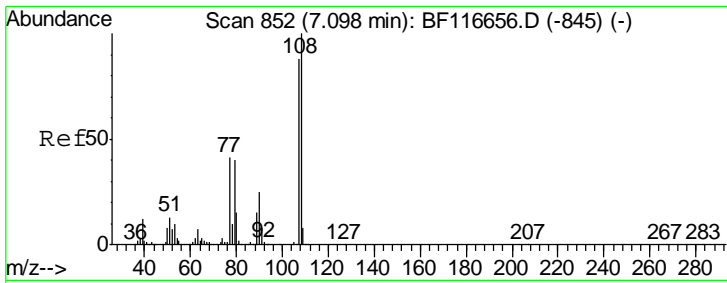
mohammad  
 9/12/2019 9:26:31 AM



#10  
 Phenol  
 Concen: 3.569 ng  
 RT: 6.49 min Scan# 749  
 Delta R.T. 0.00 min  
 Lab File: BF116890.D  
 Acq: 9 Sep 2019 1:28

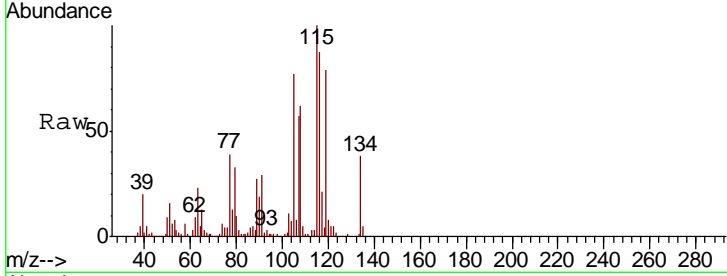
Tgt Ion	Resp	Lower	Upper
94	26823		
65	34.5	10.8	50.8
66	53.9	21.1	61.1





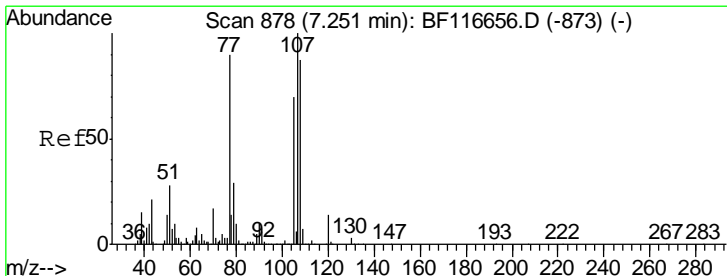
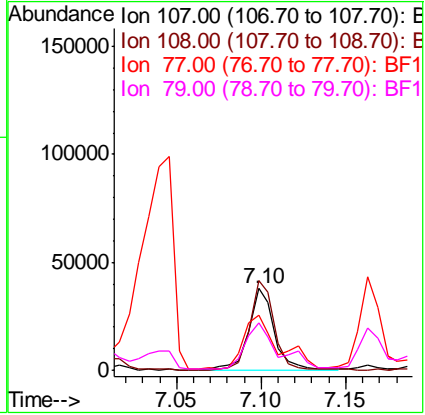
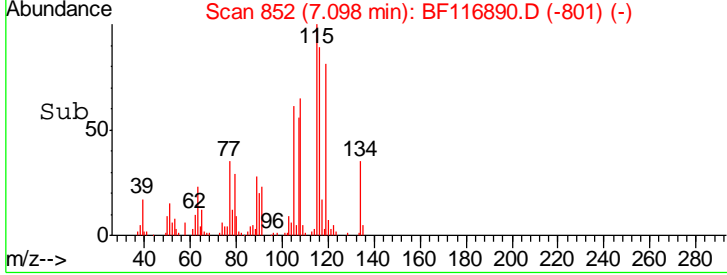
#17  
 2-Methylphenol  
 Concen: 8.291 ng  
 RT: 7.10 min Scan# 852  
 Delta R.T. 0.00 min  
 Lab File: BF116890.D  
 Acq: 9 Sep 2019 1:28

**Instrument :**  
 BNA\_F  
**ClientSampled :**  
 MW-2A

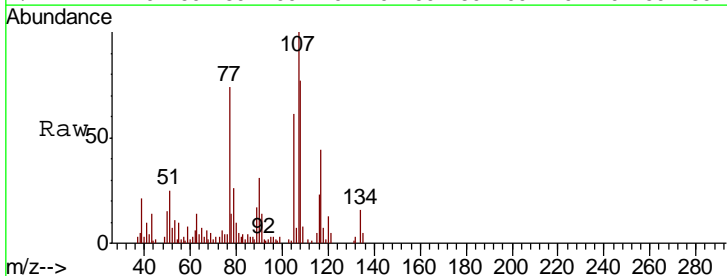


Tgt Ion	Resp	Lower	Upper
107	100		
108	110.3	88.3	132.5
77	68.1	39.9	59.9
79	59.0	39.8	59.8

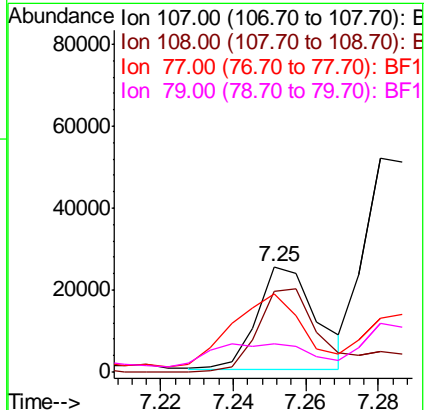
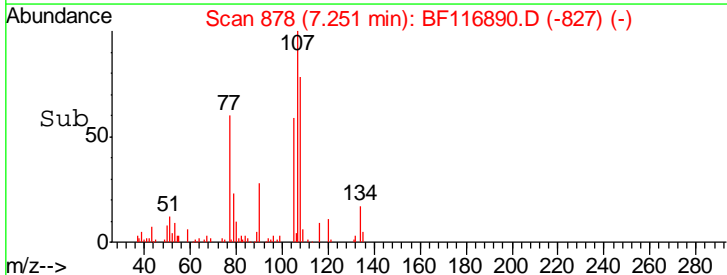
**Manual Integrations**  
**APPROVED**  
 mohammad  
 9/12/2019 9:26:31 AM

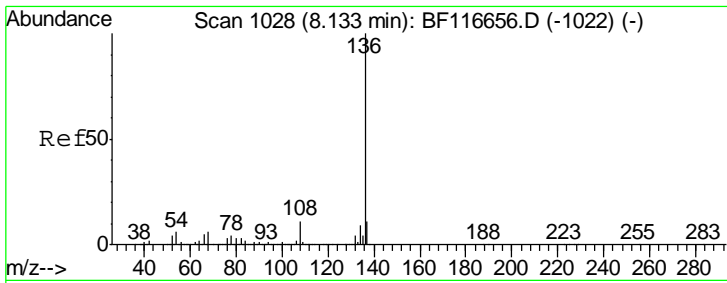


#20  
 3+4-Methylphenols  
 Concen: 4.968 ng  
 RT: 7.25 min Scan# 878  
 Delta R.T. 0.00 min  
 Lab File: BF116890.D  
 Acq: 9 Sep 2019 1:28



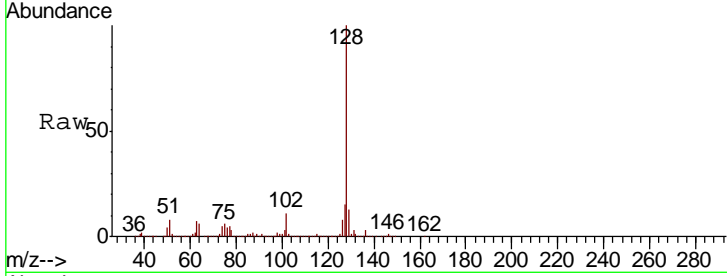
Tgt Ion	Resp	Lower	Upper
107	100		
108	76.5	65.5	105.5
77	74.5	69.4	109.4
79	26.5	9.5	49.5





#21  
 Naphthalene-d8  
 Concen: 20.000 ng  
 RT: 8.16 min Scan# 1032  
 Delta R.T. 0.02 min  
 Lab File: BF116890.D  
 Acq: 9 Sep 2019 1:28

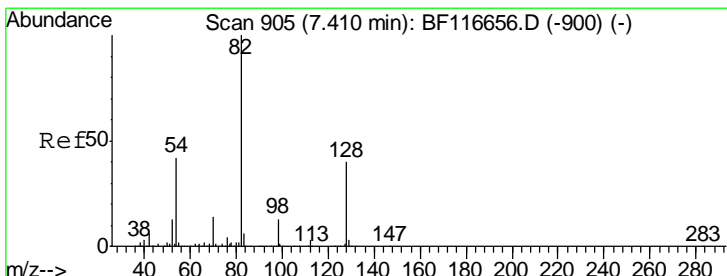
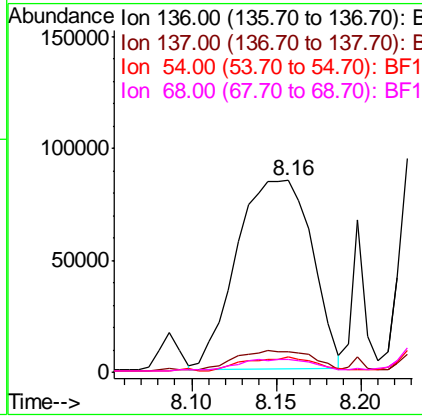
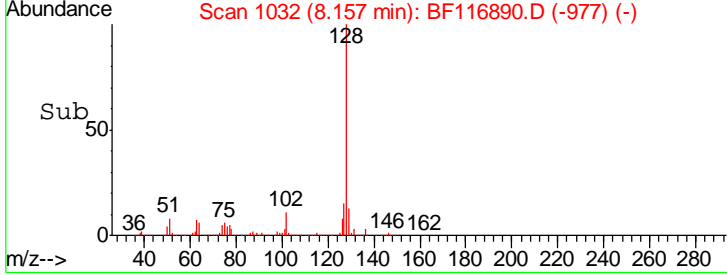
Instrument :  
 BNA\_F  
 ClientSampled :  
 MW-2A



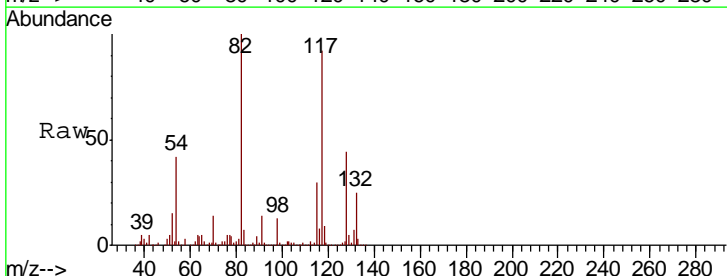
Tgt Ion	Resp	Lower	Upper
136	100		
137	10.7	8.9	13.3
54	8.2	4.8	7.2#
68	6.5	4.0	6.0#

Manual Integrations  
 APPROVED

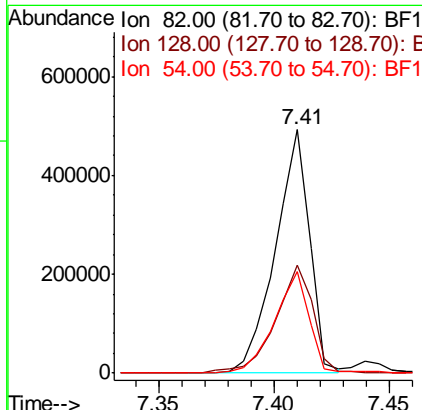
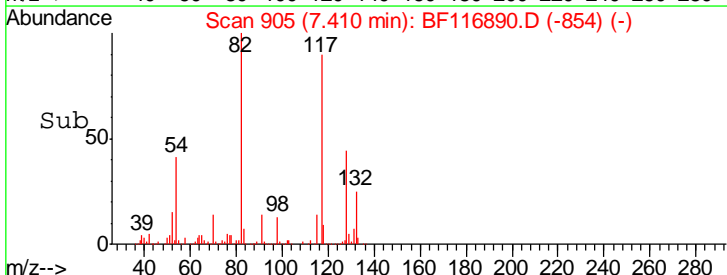
mohammad  
 9/12/2019 9:26:31 AM

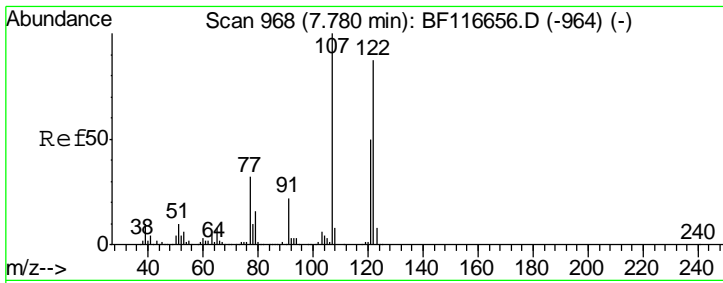


#23  
 Nitrobenzene-d5  
 Concen: 109.239 ng  
 RT: 7.41 min Scan# 905  
 Delta R.T. 0.00 min  
 Lab File: BF116890.D  
 Acq: 9 Sep 2019 1:28



Tgt Ion	Resp	Lower	Upper
82	100		
128	44.1	32.8	49.2
54	41.5	36.9	55.3





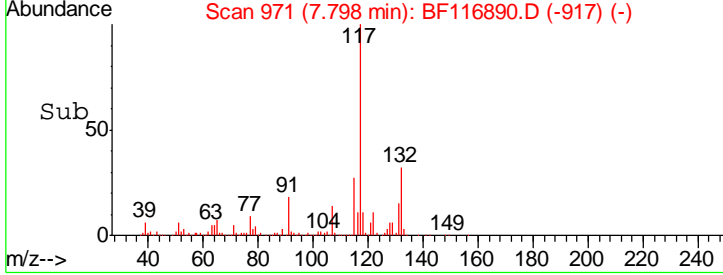
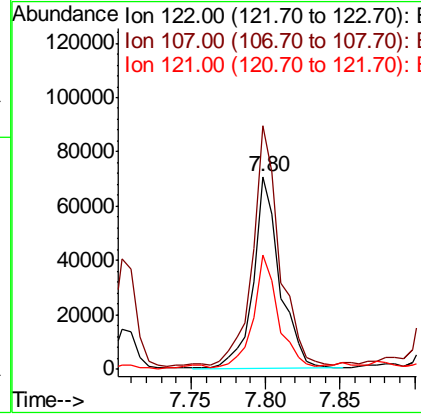
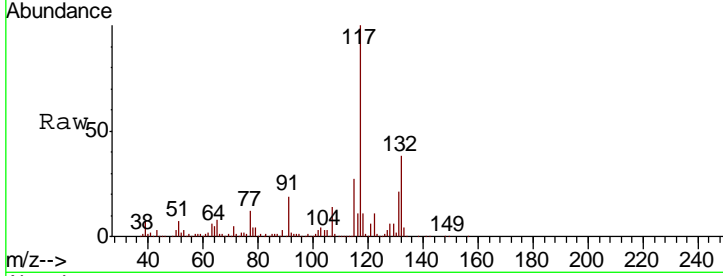
#27  
 2,4-Dimethylphenol  
 Concen: 24.539 ng  
 RT: 7.80 min Scan# 971  
 Delta R.T. 0.02 min  
 Lab File: BF116890.D  
 Acq: 9 Sep 2019 1:28

Instrument :  
 BNA\_F  
 ClientSampled :  
 MW-2A

Tgt Ion	Resp	Lower	Upper
122	85932		
122	100		
107	126.3	98.1	147.1
121	59.0	47.3	70.9

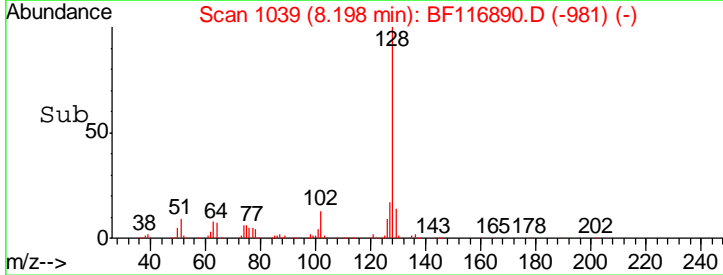
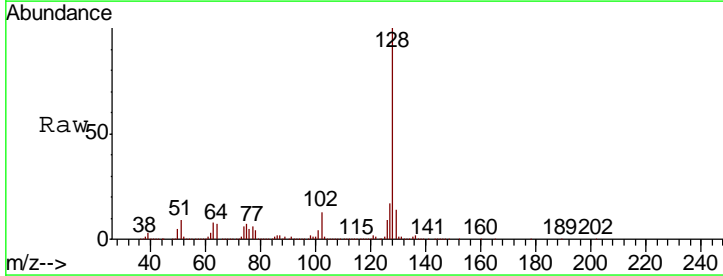
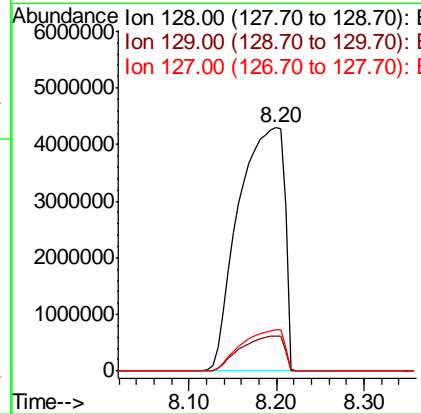
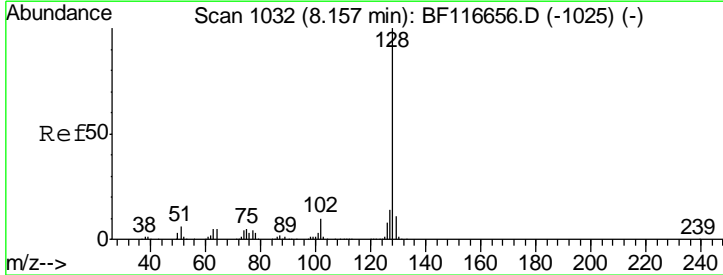
Manual Integrations  
 APPROVED

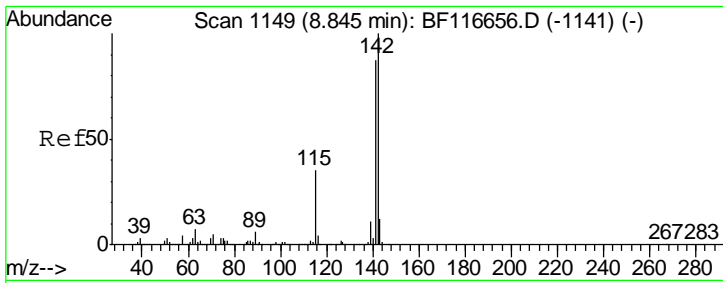
mohammad  
 9/12/2019 9:26:31 AM



#31  
 Naphthalene  
 Concen: 1238.386 ng  
 RT: 8.20 min Scan# 1039  
 Delta R.T. 0.04 min  
 Lab File: BF116890.D  
 Acq: 9 Sep 2019 1:28

Tgt Ion	Resp	Lower	Upper
128	15415366		
128	100		
129	14.1	8.6	13.0#
127	16.8	10.4	15.6#





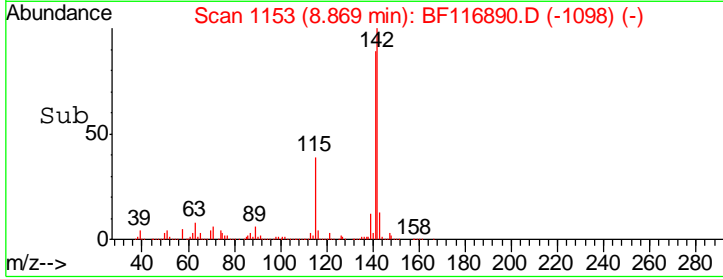
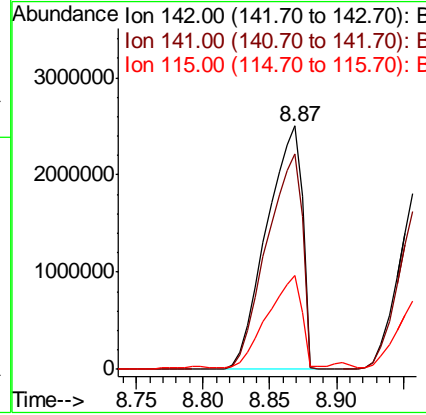
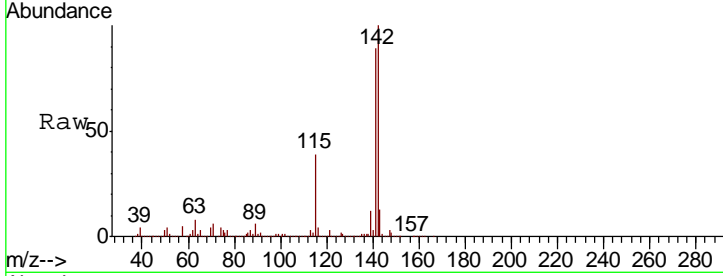
#37  
 2-Methylnaphthalene  
 Concen: 562.801 ng  
 RT: 8.87 min Scan# 1153  
 Delta R.T. 0.02 min  
 Lab File: BF116890.D  
 Acq: 9 Sep 2019 1:28

Instrument :  
 BNA\_F  
 ClientSampled :  
 MW-2A

Tgt Ion	Resp	Lower	Upper
142	100		
141	88.7	72.6	109.0
115	38.8	29.8	44.6

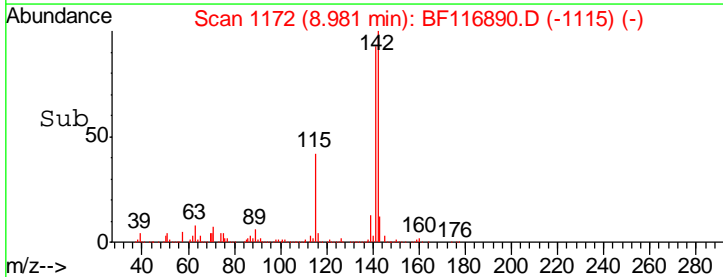
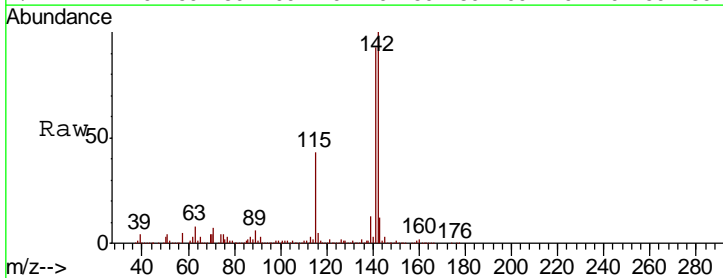
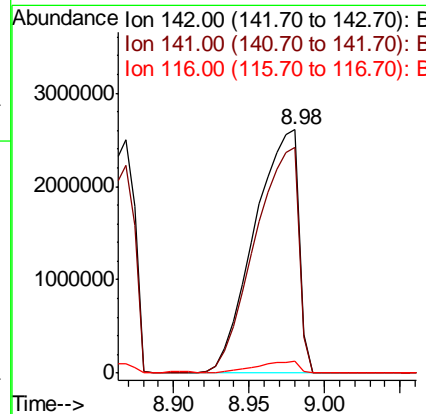
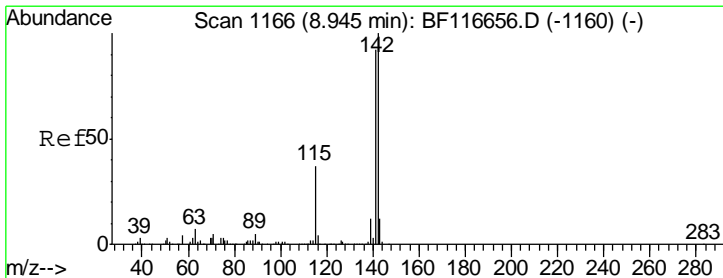
Manual Integrations  
 APPROVED

mohammad  
 9/12/2019 9:26:31 AM

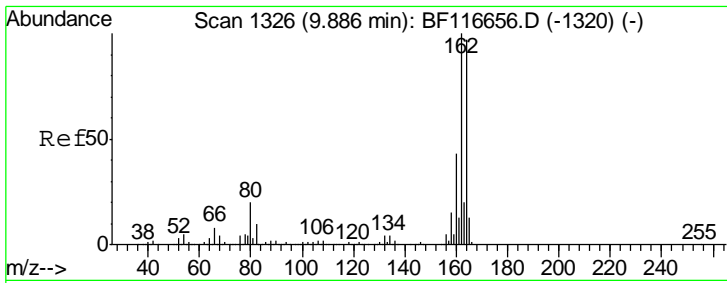


#38  
 1-Methylnaphthalene  
 Concen: 684.258 ng m  
 RT: 8.98 min Scan# 1172  
 Delta R.T. 0.04 min  
 Lab File: BF116890.D  
 Acq: 9 Sep 2019 1:28

Tgt Ion	Resp	Lower	Upper
142	100		
141	92.6	73.9	110.9
116	4.7	3.0	4.6#







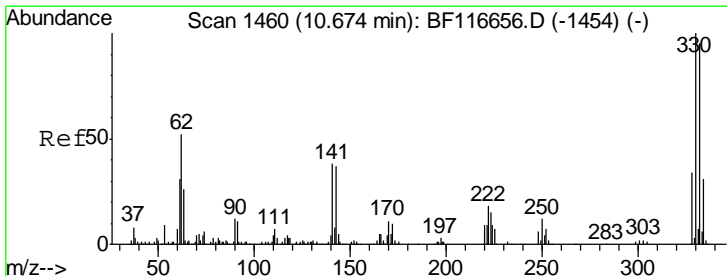
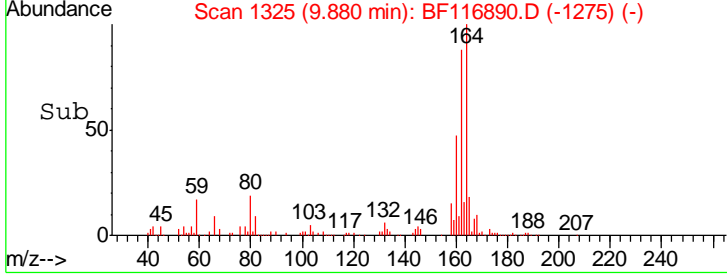
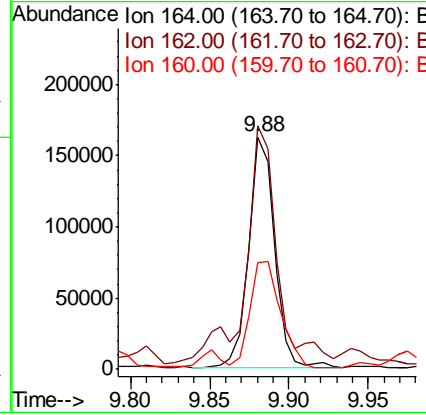
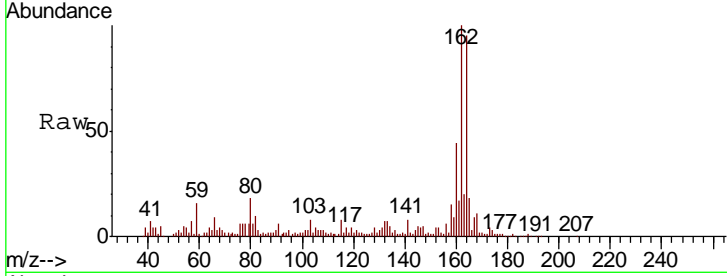
#39  
 Acenaphthene-d10  
 Concen: 20.000 ng  
 RT: 9.88 min Scan# 1325  
 Delta R.T. -0.01 min  
 Lab File: BF116890.D  
 Acq: 9 Sep 2019 1:28

**Instrument :**  
 BNA\_F  
**ClientSampled :**  
 MW-2A

Tgt Ion	Resp	Lower	Upper
164	100		
162	104.8	81.4	122.0
160	45.8	35.4	53.2

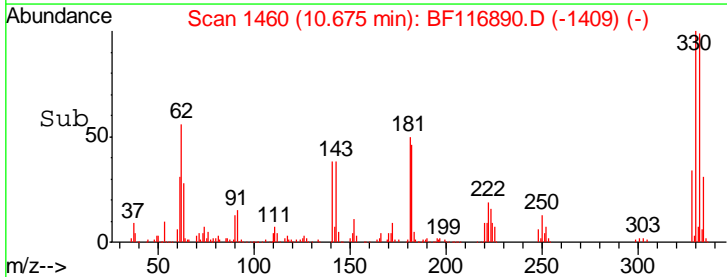
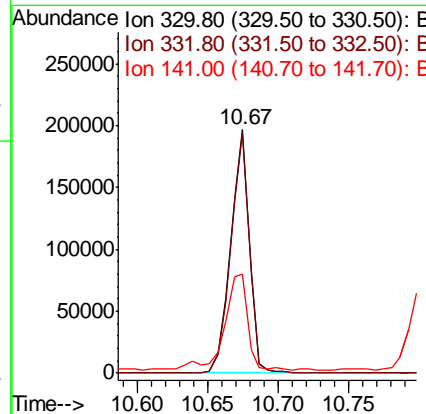
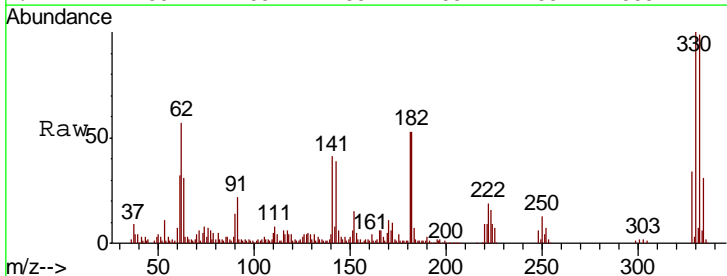
**Manual Integrations**  
**APPROVED**

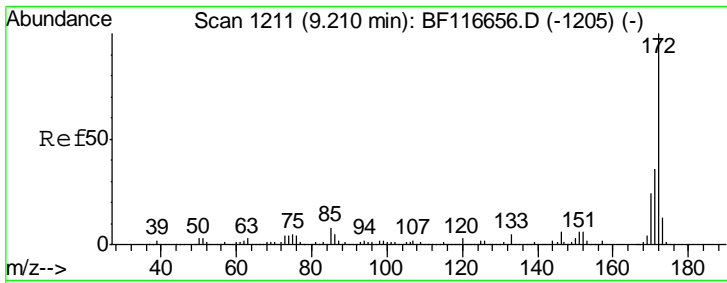
mohammad  
 9/12/2019 9:26:31 AM



#42  
 2,4,6-Tribromophenol  
 Concen: 147.560 ng  
 RT: 10.67 min Scan# 1460  
 Delta R.T. 0.00 min  
 Lab File: BF116890.D  
 Acq: 9 Sep 2019 1:28

Tgt Ion	Resp	Lower	Upper
330	100		
332	98.5	76.9	115.3
141	49.5	31.4	47.2#





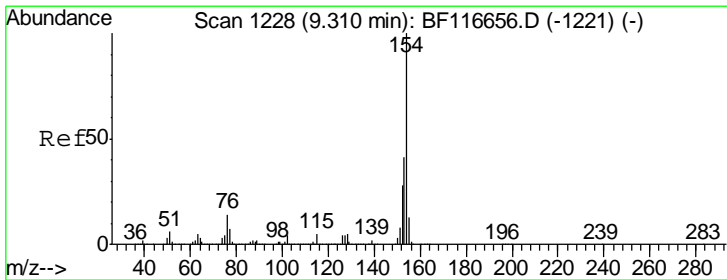
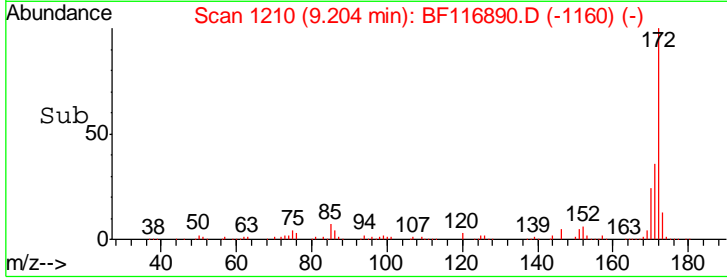
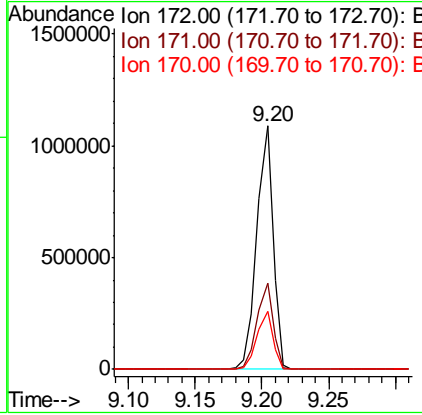
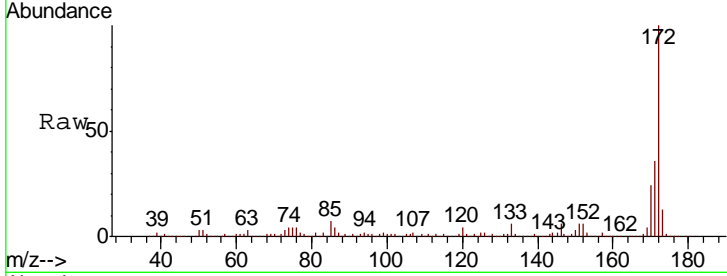
#45  
 2-Fluorobiphenyl  
 Concen: 84.100 ng  
 RT: 9.20 min Scan# 1210  
 Delta R.T. -0.00 min  
 Lab File: BF116890.D  
 Acq: 9 Sep 2019 1:28

Instrument :  
 BNA\_F  
 ClientSampled :  
 MW-2A

Tgt Ion	Resp	Lower	Upper
172	100		
171	35.6	27.8	41.6
170	23.6	18.9	28.3

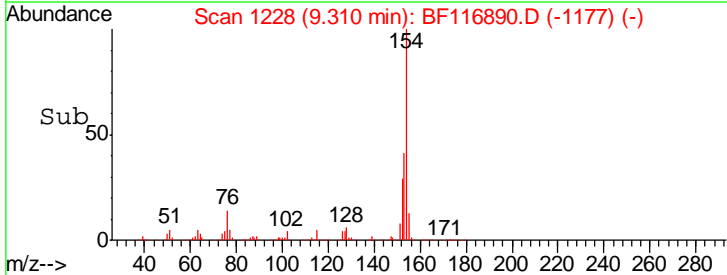
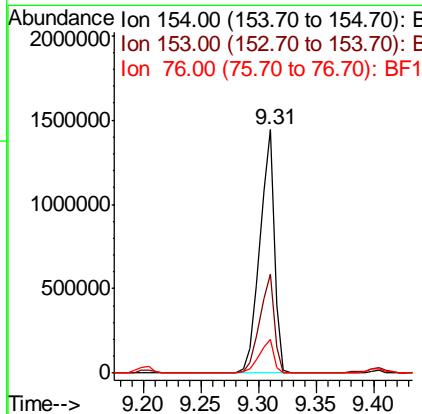
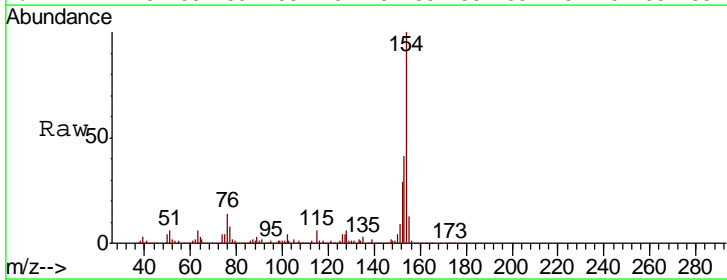
Manual Integrations  
 APPROVED

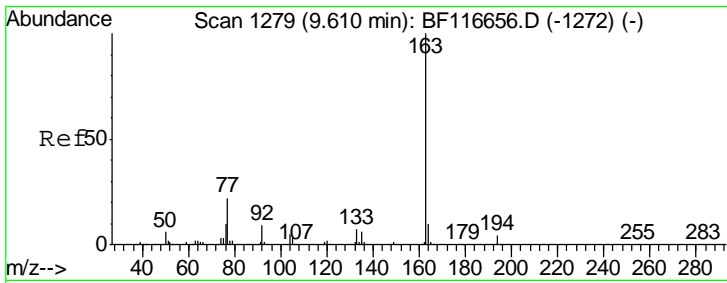
mohammad  
 9/12/2019 9:26:31 AM



#46  
 1,1'-Biphenyl  
 Concen: 92.873 ng  
 RT: 9.31 min Scan# 1228  
 Delta R.T. 0.00 min  
 Lab File: BF116890.D  
 Acq: 9 Sep 2019 1:28

Tgt Ion	Resp	Lower	Upper
154	100		
153	40.8	21.2	61.2
76	13.7	0.0	30.9





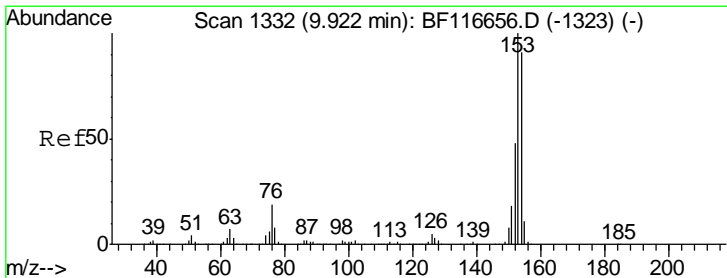
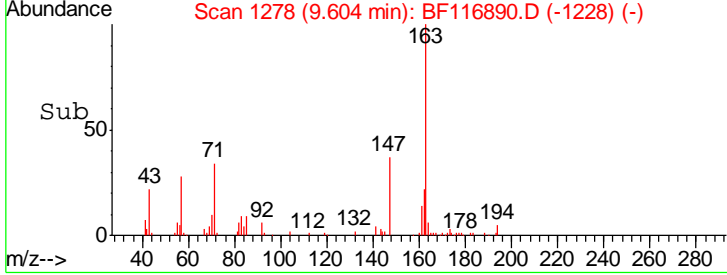
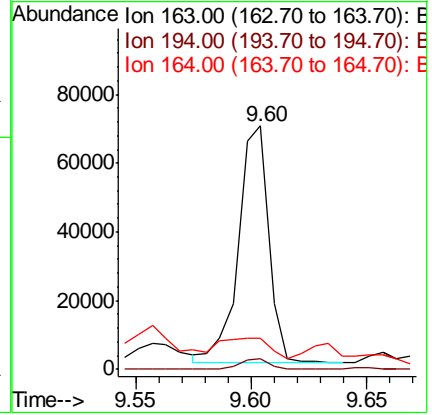
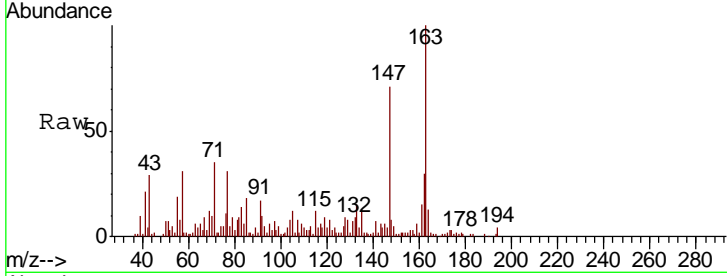
#50  
 Dimethylphthalate  
 Concen: 5.029 ng  
 RT: 9.60 min Scan# 1278  
 Delta R.T. -0.01 min  
 Lab File: BF116890.D  
 Acq: 9 Sep 2019 1:28

Instrument :  
 BNA\_F  
 ClientSampled :  
 MW-2A

Tgt Ion	Resp	Lower	Upper
163	100		
194	4.5	2.8	4.2#
164	13.0	8.6	12.8#

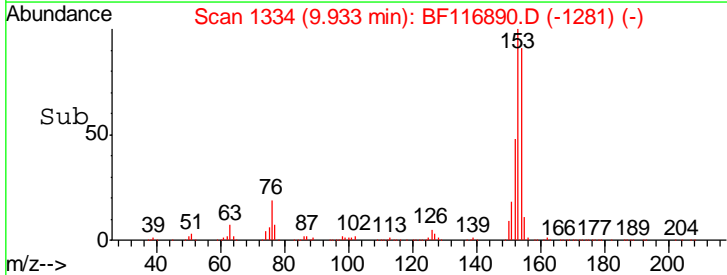
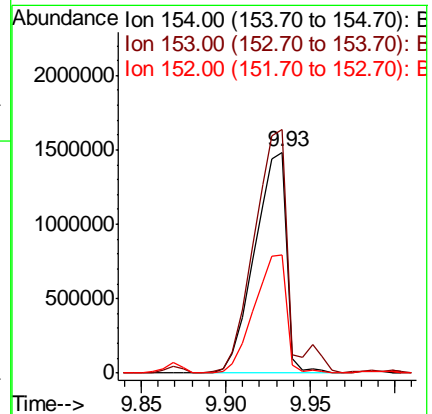
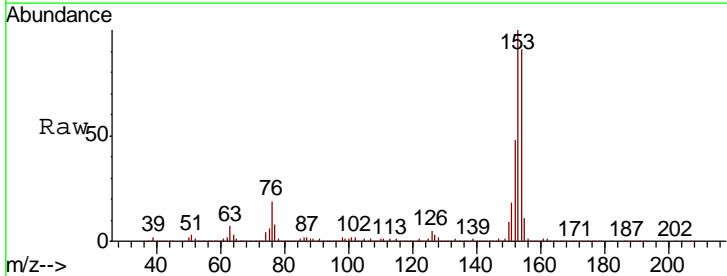
Manual Integrations  
 APPROVED

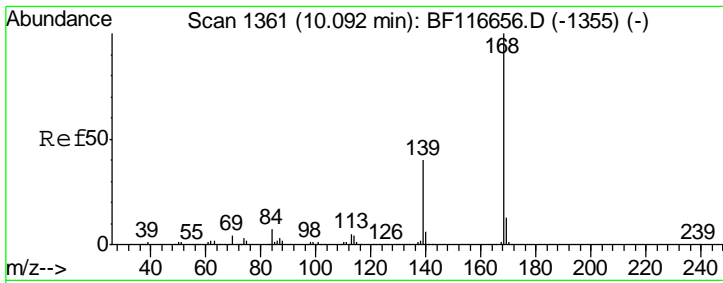
mohammad  
 9/12/2019 9:26:31 AM



#52  
 Acenaphthene  
 Concen: 189.484 ng  
 RT: 9.93 min Scan# 1334  
 Delta R.T. 0.01 min  
 Lab File: BF116890.D  
 Acq: 9 Sep 2019 1:28

Tgt Ion	Resp	Lower	Upper
154	100		
153	110.3	89.5	134.3
152	53.3	41.9	62.9





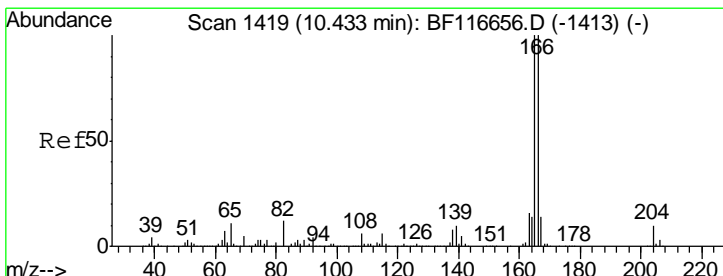
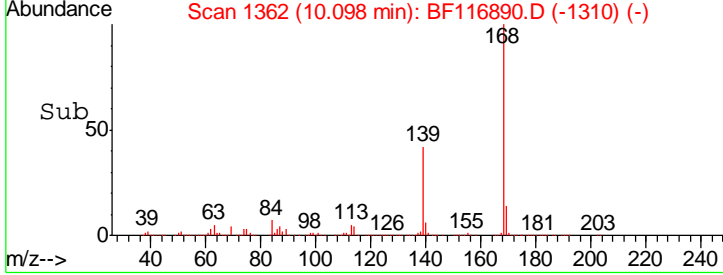
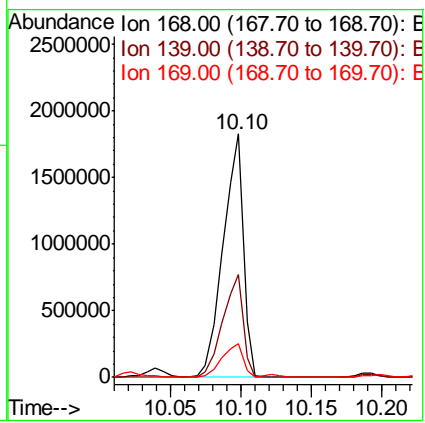
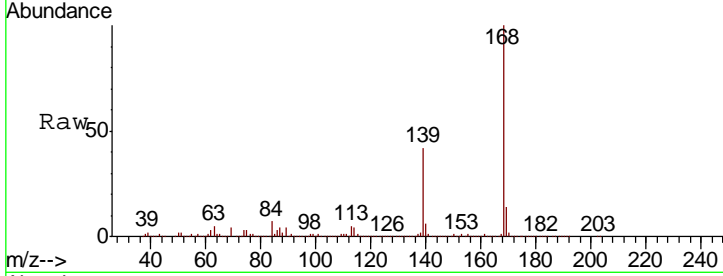
#55  
 Dibenzofuran  
 Concen: 126.242 ng  
 RT: 10.10 min Scan# 1362  
 Delta R.T. 0.01 min  
 Lab File: BF116890.D  
 Acq: 9 Sep 2019 1:28

Instrument :  
 BNA\_F  
 ClientSampled :  
 MW-2A

Tgt Ion:168 Resp: 1819487

Ion	Ratio	Lower	Upper
168	100		
139	42.0	31.5	47.3
169	14.0	10.3	15.5

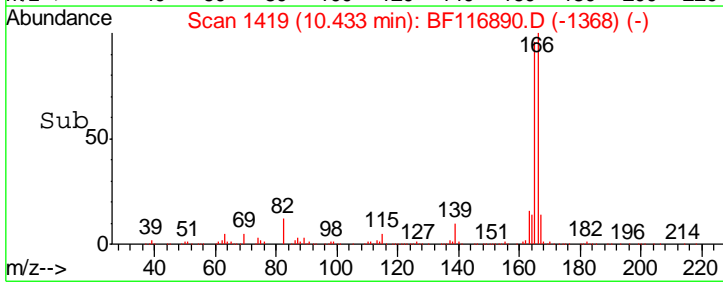
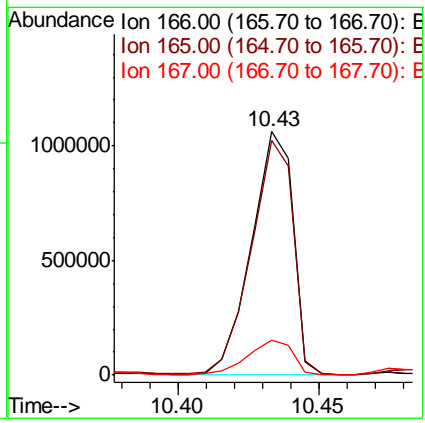
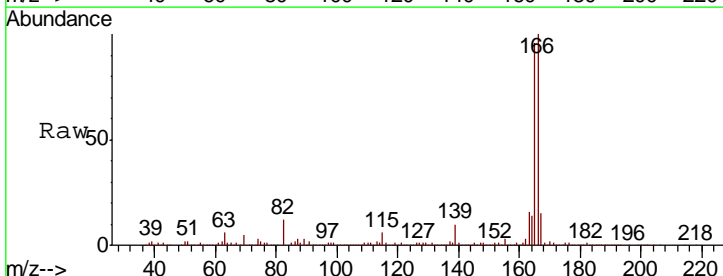
Manual Integrations  
**APPROVED**  
 mohammad  
 9/12/2019 9:26:31 AM

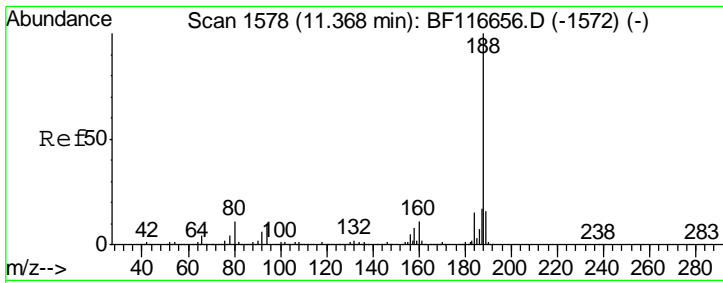


#58  
 Fluorene  
 Concen: 98.528 ng  
 RT: 10.43 min Scan# 1419  
 Delta R.T. 0.00 min  
 Lab File: BF116890.D  
 Acq: 9 Sep 2019 1:28

Tgt Ion:166 Resp: 1082030

Ion	Ratio	Lower	Upper
166	100		
165	96.5	78.8	118.2
167	14.6	10.0	15.0





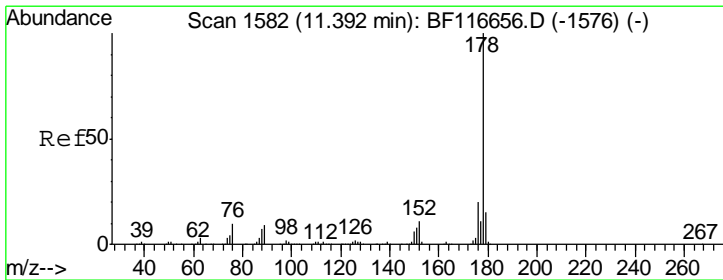
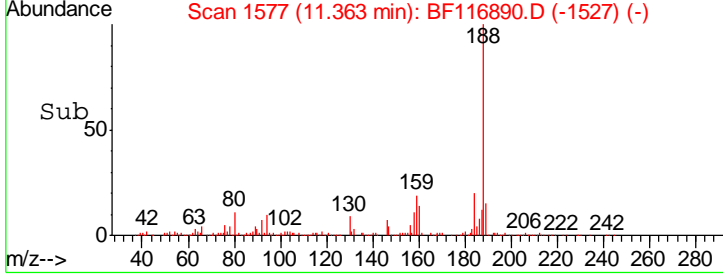
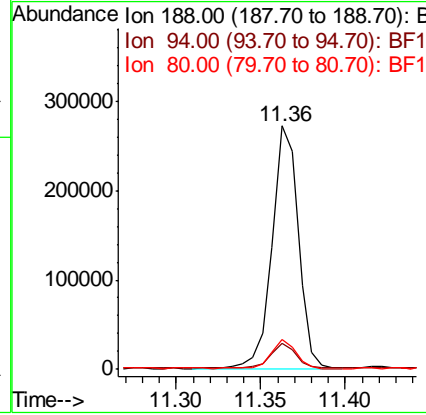
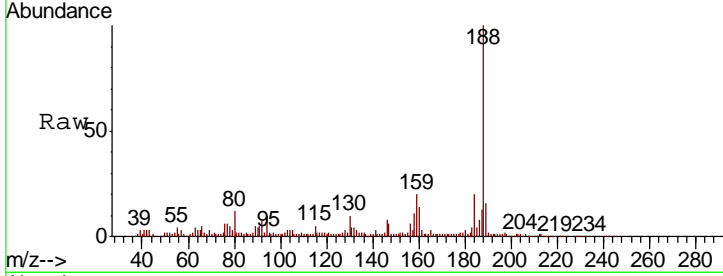
#64  
 Phenanthrene-d10  
 Concen: 20.000 ng  
 RT: 11.36 min Scan# 1577  
 Delta R.T. -0.01 min  
 Lab File: BF116890.D  
 Acq: 9 Sep 2019 1:28

**Instrument :**  
 BNA\_F  
**ClientSampled :**  
 MW-2A

Tgt Ion	Resp	Lower	Upper
188	100		
94	10.5	7.3	10.9
80	12.0	8.4	12.6

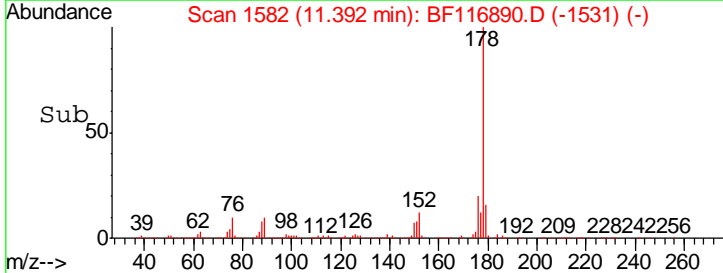
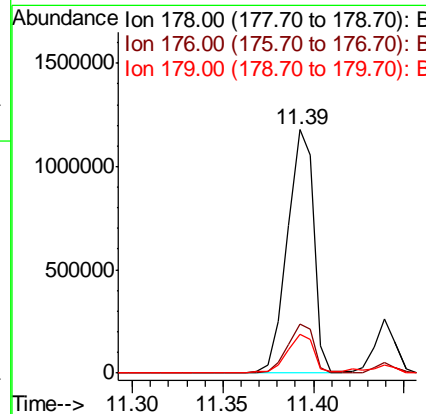
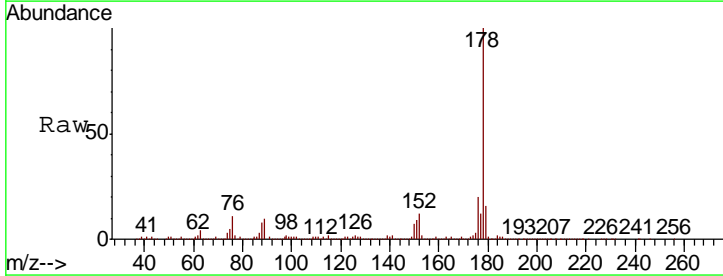
**Manual Integrations**  
**APPROVED**

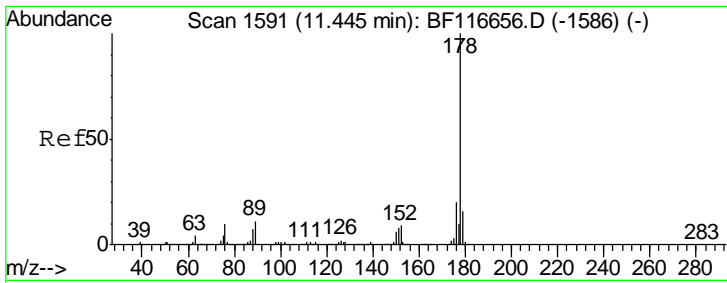
mohammad  
 9/12/2019 9:26:31 AM



#71  
 Phenanthrene  
 Concen: 73.201 ng  
 RT: 11.39 min Scan# 1582  
 Delta R.T. 0.00 min  
 Lab File: BF116890.D  
 Acq: 9 Sep 2019 1:28

Tgt Ion	Resp	Lower	Upper
178	100		
176	20.1	15.4	23.0
179	16.2	12.2	18.2



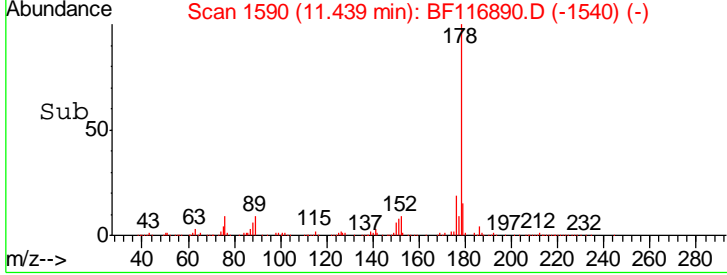
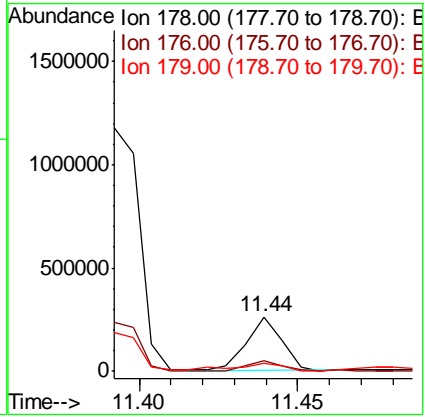
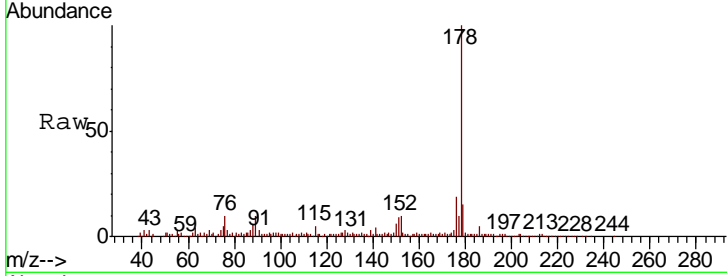


#72  
 Anthracene  
 Concen: 12.196 ng  
 RT: 11.44 min Scan# 1590  
 Delta R.T. -0.00 min  
 Lab File: BF116890.D  
 Acq: 9 Sep 2019 1:28

Instrument :  
 BNA\_F  
 ClientSampled :  
 MW-2A

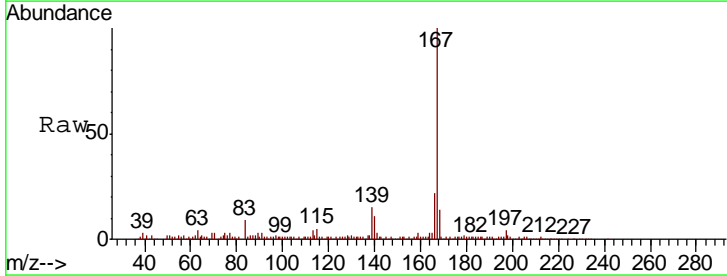
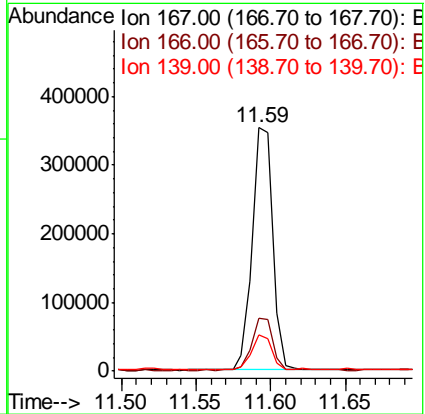
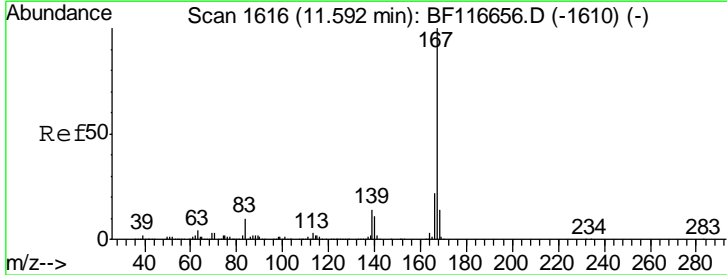
Tgt Ion	Resp	Lower	Upper
178	199601		
176	19.3	15.4	23.0
179	15.3	12.5	18.7

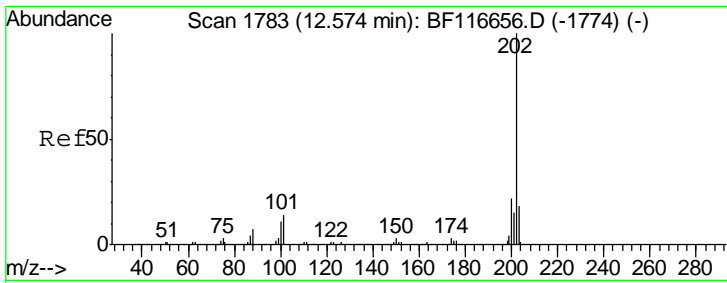
Manual Integrations  
 APPROVED  
 mohammad  
 9/12/2019 9:26:31 AM



#73  
 Carbazole  
 Concen: 21.497 ng  
 RT: 11.59 min Scan# 1616  
 Delta R.T. 0.00 min  
 Lab File: BF116890.D  
 Acq: 9 Sep 2019 1:28

Tgt Ion	Resp	Lower	Upper
167	335116		
166	22.0	17.8	26.6
139	14.8	11.1	16.7





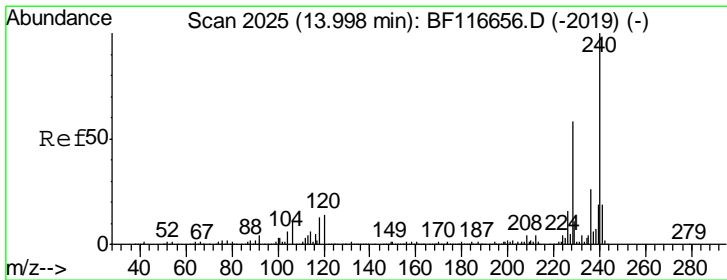
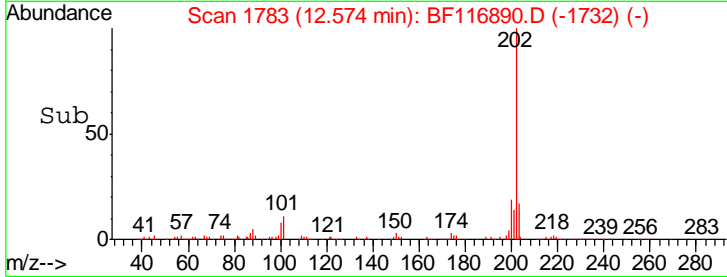
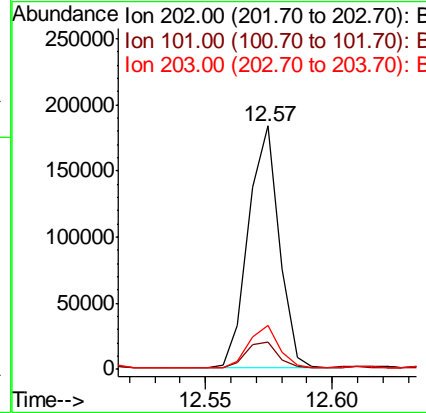
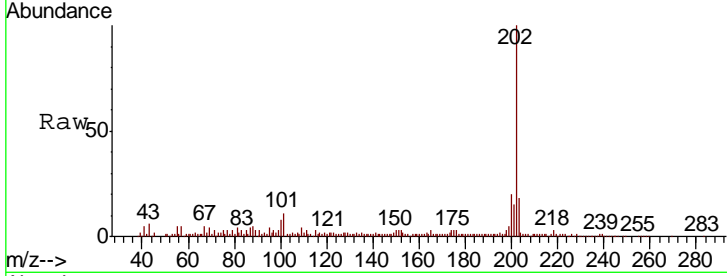
#75  
 Fluoranthene  
 Concen: 9.678 ng  
 RT: 12.57 min Scan# 1783  
 Delta R.T. 0.00 min  
 Lab File: BF116890.D  
 Acq: 9 Sep 2019 1:28

**Instrument :**  
 BNA\_F  
**ClientSampled :**  
 MW-2A

Tgt Ion	Resp	Lower	Upper
202	154627		
101	11.1	0.0	31.3
203	18.1	0.0	37.6

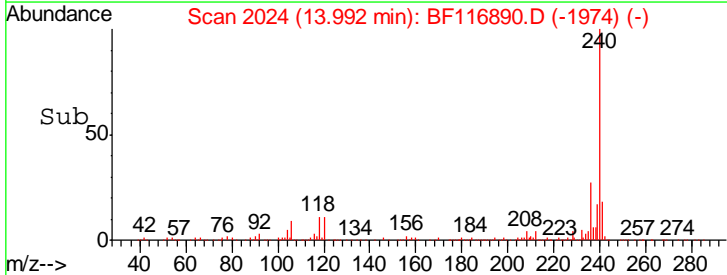
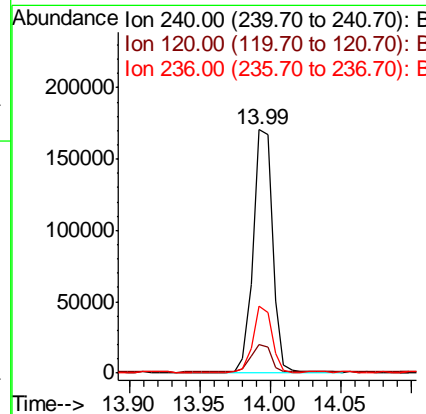
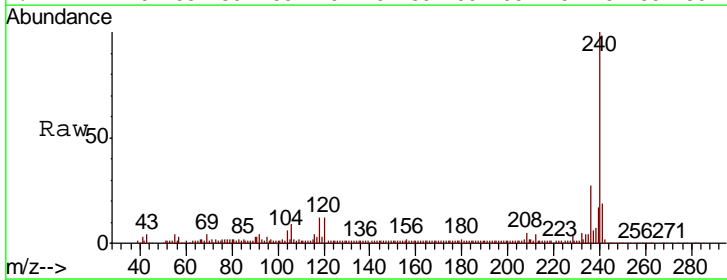
**Manual Integrations**  
**APPROVED**

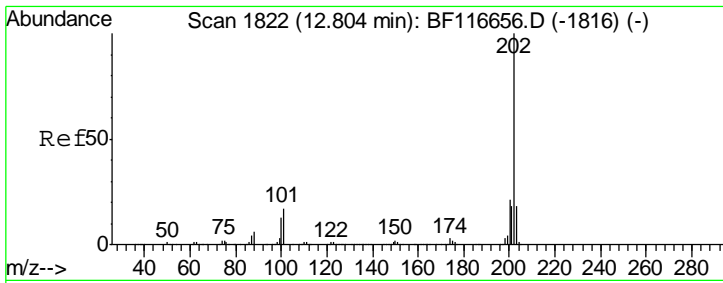
mohammad  
 9/12/2019 9:26:31 AM



#76  
 Chrysene-d12  
 Concen: 20.000 ng  
 RT: 13.99 min Scan# 2024  
 Delta R.T. -0.01 min  
 Lab File: BF116890.D  
 Acq: 9 Sep 2019 1:28

Tgt Ion	Resp	Lower	Upper
240	165463		
120	11.6	9.1	13.7
236	27.3	21.1	31.7





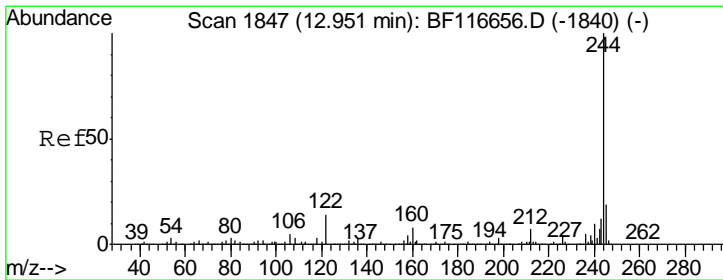
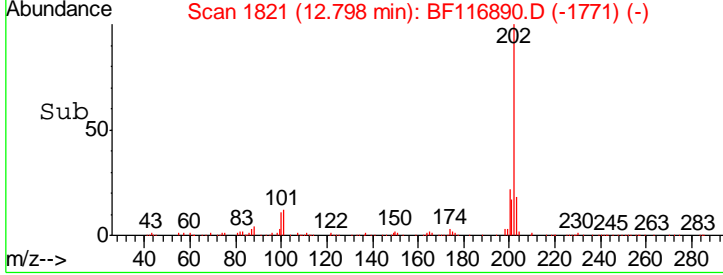
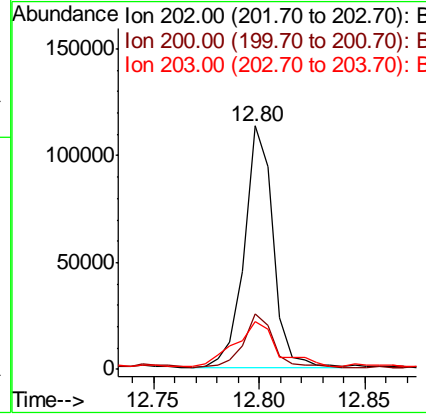
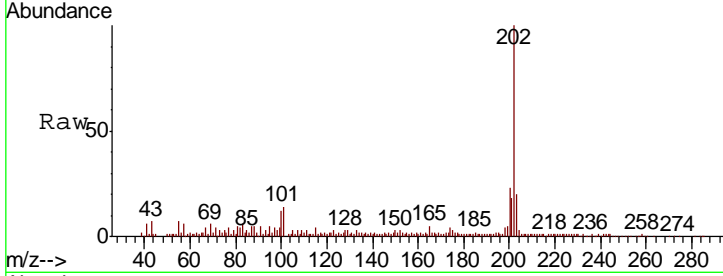
#78  
 Pyrene  
 Concen: 7.230 ng  
 RT: 12.80 min Scan# 1821  
 Delta R.T. -0.01 min  
 Lab File: BF116890.D  
 Acq: 9 Sep 2019 1:28

**Instrument :**  
 BNA\_F  
**ClientSampled :**  
 MW-2A

Tgt Ion	Resp	Lower	Upper
202	106344		
200	22.5	16.5	24.7
203	19.8	13.7	20.5

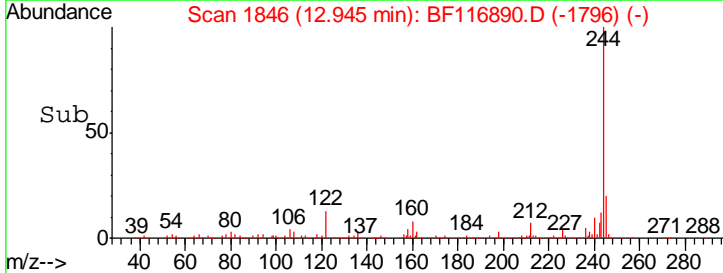
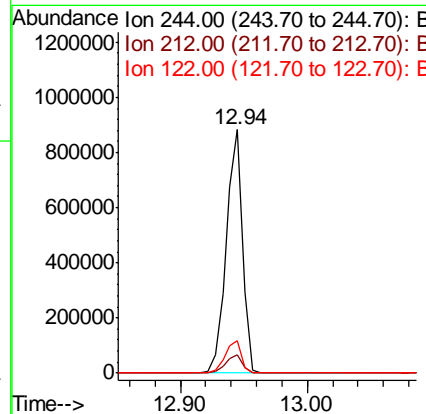
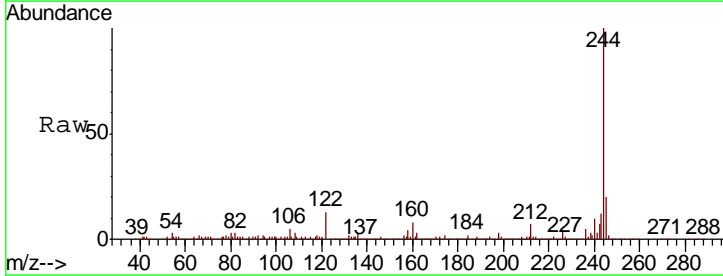
**Manual Integrations**  
**APPROVED**

mohammad  
 9/12/2019 9:26:31 AM

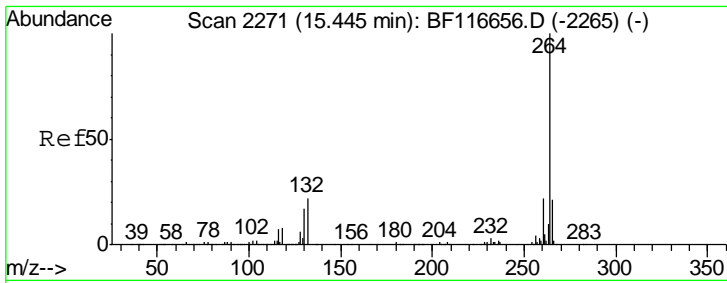


#79  
 Terphenyl-d14  
 Concen: 87.878 ng  
 RT: 12.94 min Scan# 1846  
 Delta R.T. -0.01 min  
 Lab File: BF116890.D  
 Acq: 9 Sep 2019 1:28

Tgt Ion	Resp	Lower	Upper
244	785999		
212	7.4	6.1	9.1
122	13.4	10.2	15.4







#87  
 Perylene-d12  
 Concen: 20.000 ng  
 RT: 15.45 min Scan# 2272  
 Delta R.T. 0.01 min  
 Lab File: BF116890.D  
 Acq: 9 Sep 2019 1:28

**Instrument :**  
 BNA\_F  
**ClientSampled :**  
 MW-2A

Tot Ion	Ion	Resp	Lower	Upper
178786	264	100		
	260	23.7	18.3	27.5
	265	21.1	16.5	24.7

**Manual Integrations**  
**APPROVED**  
 mohammad  
 9/12/2019 9:26:31 AM

