

Data Path : Z:\svoasrv\HPCHEM1\BNA_F\Data\BF091223\
 Data File : BF135174.D
 Acq On : 12 Sep 2023 11:00
 Operator : CG\JU
 Sample : PB155440BS
 Misc :
 ALS Vial : 6 Sample Multiplier: 1

Instrument :
 BNA_F
 ClientSampleId :

Quant Time: Sep 13 01:59:40 2023
 Quant Method : Z:\svoasrv\HPCHEM1\BNA_F\Methods\8270-BF091123.M
 Quant Title : ASP BNA STANDARDS FOR 5 POINT CALIBRATION
 QLast Update : Tue Sep 12 00:19:07 2023
 Response via : Initial Calibration

Compound	R.T.	QIon	Response	Conc Units	Dev(Min)
Internal Standards					
1) 1,4-Dichlorobenzene-d4	6.763	152	113194	20.000 ng	0.00
21) Naphthalene-d8	8.045	136	440841	20.000 ng	0.00
39) Acenaphthene-d10	9.804	164	229554	20.000 ng	0.00
64) Phenanthrene-d10	11.292	188	439496	20.000 ng	0.00
76) Chrysene-d12	13.951	240	237538	20.000 ng	# 0.00
86) Perylene-d12	15.410	264	218789	20.000 ng	0.00
System Monitoring Compounds					
5) 2-Fluorophenol	5.404	112	905956	130.174 ng	0.02
7) Phenol-d6	6.410	99	1156803	130.719 ng	0.00
23) Nitrobenzene-d5	7.334	82	739407	91.125 ng	0.00
42) 2,4,6-Tribromophenol	10.598	330	309099	135.498 ng	0.00
45) 2-Fluorobiphenyl	9.128	172	1294619	85.088 ng	0.00
79) Terphenyl-d14	12.892	244	1355585	88.467 ng	0.00
Target Compounds					
2) 1,4-Dioxane	2.575	88	115367	37.814 ng	99
3) Pyridine	3.328	79	296695	36.133 ng	96
4) n-Nitrosodimethylamine	3.287	42	199191	45.714 ng	98
6) Aniline	6.434	93	367556	31.673 ng	98
8) 2-Chlorophenol	6.551	128	357020	48.055 ng	98
9) Benzaldehyde	6.316	77	129152	25.618 ng	99
10) Phenol	6.428	94	426954	43.998 ng	84
11) bis(2-Chloroethyl)ether	6.510	93	328100	45.075 ng	98
12) 1,3-Dichlorobenzene	6.704	146	347576	46.034 ng	99
13) 1,4-Dichlorobenzene	6.781	146	352658	45.908 ng	98
14) 1,2-Dichlorobenzene	6.934	146	337442	47.302 ng	97
15) Benzyl Alcohol	6.916	79	301958	47.550 ng	98
16) 2,2'-oxybis(1-Chloropr...	7.045	45	625822	45.613 ng	99
17) 2-Methylphenol	7.028	107	280470	42.780 ng	98
18) Hexachloroethane	7.275	117	133447	47.015 ng	96
19) n-Nitroso-di-n-propyla...	7.187	70	235968	43.049 ng	98
20) 3+4-Methylphenols	7.181	107	331909	42.102 ng	94
22) Acetophenone	7.181	105	459949	45.635 ng	97
24) Nitrobenzene	7.351	77	365015	45.513 ng	100
25) Isophorone	7.592	82	680482	45.670 ng	99
26) 2-Nitrophenol	7.663	139	187806	48.791 ng	98
27) 2,4-Dimethylphenol	7.704	122	312092	48.236 ng	98
28) bis(2-Chloroethoxy)met...	7.798	93	415539	46.595 ng	100
29) 2,4-Dichlorophenol	7.904	162	285478	47.617 ng	99
30) 1,2,4-Trichlorobenzene	7.987	180	297818	47.526 ng	99
31) Naphthalene	8.069	128	986134	46.040 ng	100
32) Benzoic acid	7.845	122	246793	50.655 ng	99
33) 4-Chloroaniline	8.116	127	183119	19.486 ng	97
34) Hexachlorobutadiene	8.181	225	176549	46.724 ng	99
35) Caprolactam	8.498	113	52245	25.965 ng	98
36) 4-Chloro-3-methylphenol	8.610	107	321367	48.230 ng	98
37) 2-Methylnaphthalene	8.757	142	635672	44.150 ng	99
38) 1-Methylnaphthalene	8.857	142	590303	43.792 ng	98
40) 1,2,4,5-Tetrachloroben...	8.928	216	300058	45.119 ng	99
41) Hexachlorocyclopentadiene	8.910	237	284874	95.626 ng	95
43) 2,4,6-Trichlorophenol	9.039	196	203370	46.706 ng	100

Data Path : Z:\svoasrv\HPCHEM1\BNA_F\Data\BF091223\
 Data File : BF135174.D
 Acq On : 12 Sep 2023 11:00
 Operator : CG\JU
 Sample : PB155440BS
 Misc :
 ALS Vial : 6 Sample Multiplier: 1

Instrument :
 BNA_F
 ClientSampleId :

Quant Time: Sep 13 01:59:40 2023
 Quant Method : Z:\svoasrv\HPCHEM1\BNA_F\Methods\8270-BF091123.M
 Quant Title : ASP BNA STANDARDS FOR 5 POINT CALIBRATION
 QLast Update : Tue Sep 12 00:19:07 2023
 Response via : Initial Calibration

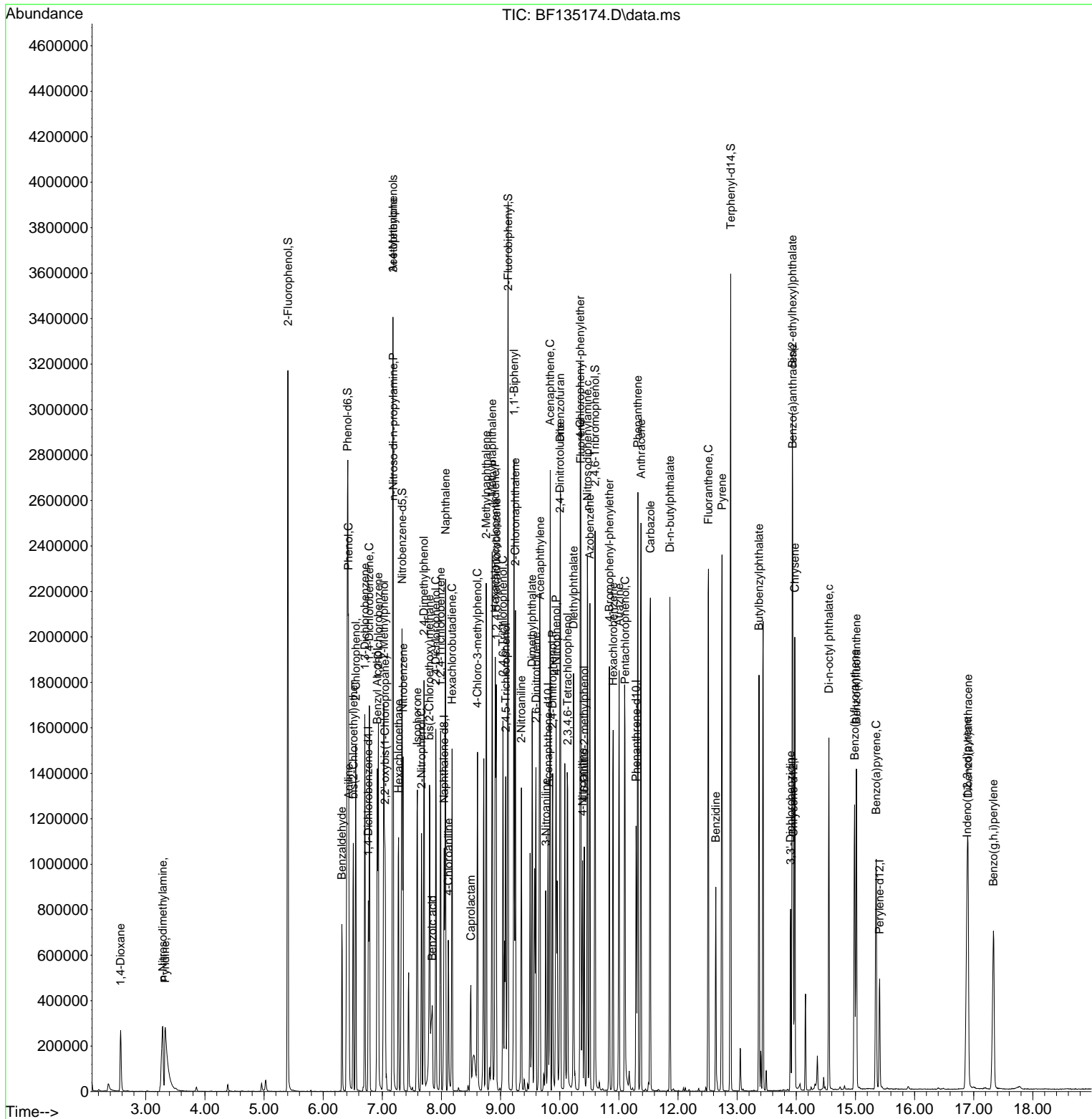
Compound	R.T.	QIon	Response	Conc	Units	Dev(Min)
44) 2,4,5-Trichlorophenol	9.086	196	219197	43.713	ng	99
46) 1,1'-Biphenyl	9.228	154	792613	44.930	ng	99
47) 2-Chloronaphthalene	9.251	162	599418	46.831	ng	99
48) 2-Nitroaniline	9.351	65	226861	45.623	ng	97
49) Acenaphthylene	9.669	152	959814	45.121	ng	99
50) Dimethylphthalate	9.533	163	701801	45.219	ng	99
51) 2,6-Dinitrotoluene	9.598	165	158444	46.602	ng	89
52) Acenaphthene	9.839	154	571866	45.508	ng	96
53) 3-Nitroaniline	9.763	138	122014	30.572	ng	98
54) 2,4-Dinitrophenol	9.880	184	169601	87.255	ng	99
55) Dibenzofuran	10.010	168	847904	44.217	ng	97
56) 4-Nitrophenol	9.939	139	246759	97.284	ng	98
57) 2,4-Dinitrotoluene	10.004	165	197133	46.314	ng	93
58) Fluorene	10.357	166	659440	44.733	ng	99
59) 2,3,4,6-Tetrachlorophenol	10.133	232	188270	48.809	ng	99
60) Diethylphthalate	10.233	149	712623	45.752	ng	98
61) 4-Chlorophenyl-phenyle...	10.345	204	312503	44.130	ng	98
62) 4-Nitroaniline	10.386	138	180597	47.076	ng	100
63) Azobenzene	10.510	77	690961	45.327	ng	97
65) 4,6-Dinitro-2-methylph...	10.416	198	117818	50.472	ng	97
66) n-Nitrosodiphenylamine	10.469	169	615544	46.262	ng	99
67) 4-Bromophenyl-phenylether	10.839	248	198847	45.491	ng	95
68) Hexachlorobenzene	10.904	284	219795	49.357	ng	96
69) Atrazine	11.004	200	200016	55.868	ng	98
70) Pentachlorophenol	11.104	266	240373	90.219	ng	98
71) Phenanthrene	11.322	178	971427	46.734	ng	99
72) Anthracene	11.375	178	984936	46.098	ng	100
73) Carbazole	11.533	167	944072	48.538	ng	99
74) Di-n-butylphthalate	11.863	149	1101494	48.061	ng	99
75) Fluoranthene	12.516	202	1011064	46.681	ng	98
77) Benzidine	12.639	184	325585	66.905	ng	99
78) Pyrene	12.745	202	1033014	45.677	ng	99
80) Butylbenzylphthalate	13.369	149	400753	50.330	ng	97
81) Benzo(a)anthracene	13.939	228	717788	46.797	ng	100
82) 3,3'-Dichlorobenzidine	13.904	252	163504	34.127	ng	99
83) Chrysene	13.974	228	700940	45.963	ng	99
84) Bis(2-ethylhexyl)phtha...	13.933	149	409818	50.156	ng	99
85) Di-n-octyl phthalate	14.551	149	667673	51.418	ng	100
87) Indeno(1,2,3-cd)pyrene	16.886	276	713611	49.745	ng	100
88) Benzo(b)fluoranthene	14.986	252	608153	51.348	ng	98
89) Benzo(k)fluoranthene	15.015	252	601156	51.383	ng	100
90) Benzo(a)pyrene	15.351	252	534289	47.304	ng	97
91) Dibenzo(a,h)anthracene	16.904	278	580370	49.446	ng	99
92) Benzo(g,h,i)perylene	17.333	276	598254	48.804	ng	99

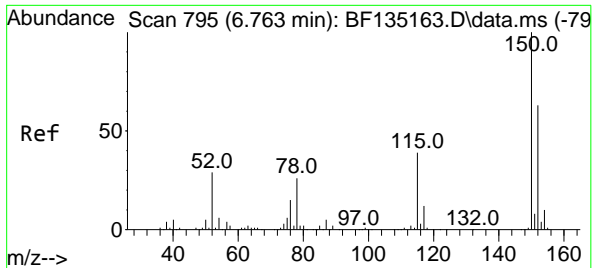
(#) = qualifier out of range (m) = manual integration (+) = signals summed

Data Path : Z:\svoasrv\HPCHEM1\BNA_F\Data\BF091223\
 Data File : BF135174.D
 Acq On : 12 Sep 2023 11:00
 Operator : CG\JU
 Sample : PB155440BS
 Misc :
 ALS Vial : 6 Sample Multiplier: 1

Instrument :
 BNA_F
 ClientSampleId :

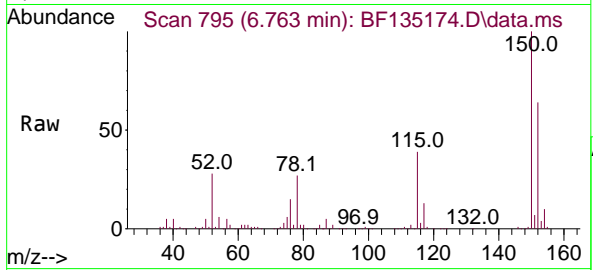
Quant Time: Sep 13 01:59:40 2023
 Quant Method : Z:\svoasrv\HPCHEM1\BNA_F\Methods\8270-BF091123.M
 Quant Title : ASP BNA STANDARDS FOR 5 POINT CALIBRATION
 QLast Update : Tue Sep 12 00:19:07 2023
 Response via : Initial Calibration



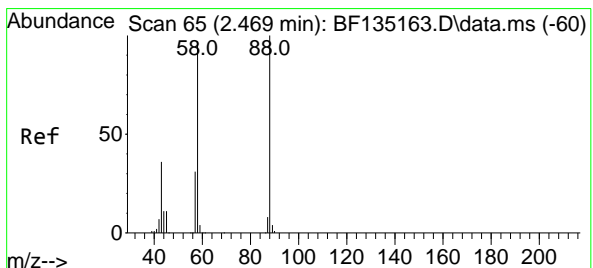
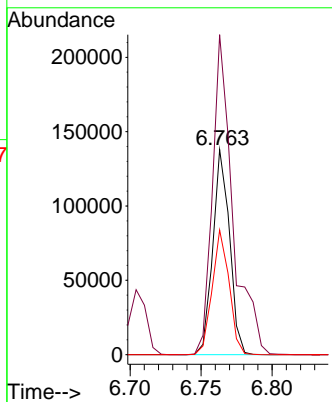
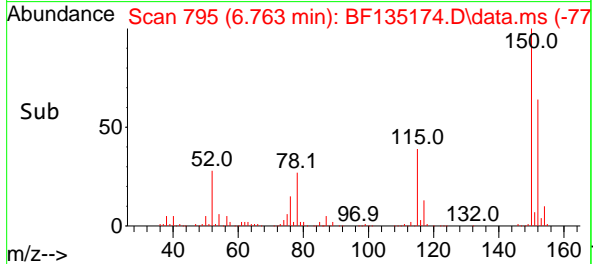


#1
 1,4-Dichlorobenzene-d4
 Concen: 20.000 ng
 RT: 6.763 min Scan# 79
 Delta R.T. 0.000 min
 Lab File: BF135174.D
 Acq: 12 Sep 2023 11:00

Instrument :
 BNA_F
 ClientSampleId :

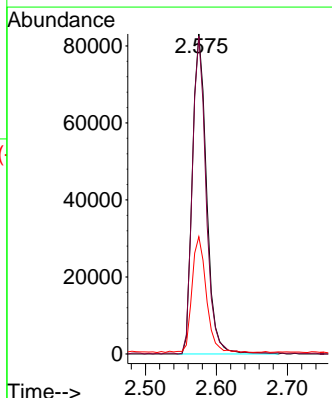
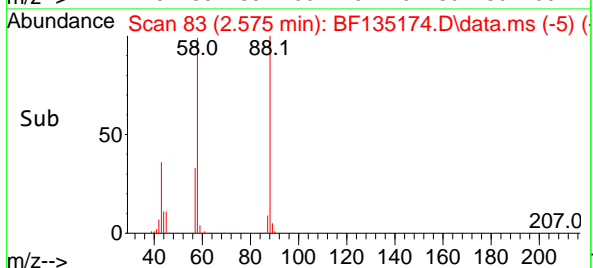
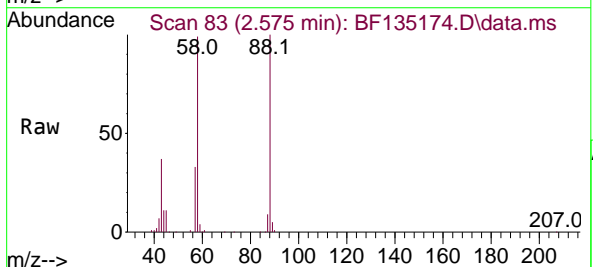


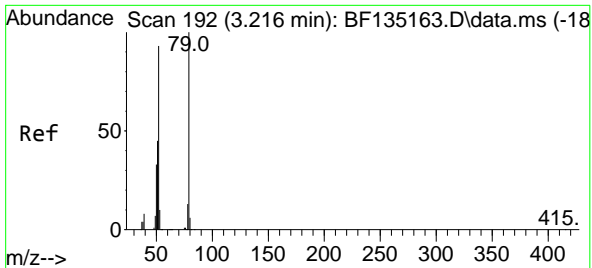
Tgt Ion:152 Resp: 113194
 Ion Ratio Lower Upper
 152 100
 150 156.0 127.8 191.6
 115 60.8 49.8 74.8



#2
 1,4-Dioxane
 Concen: 37.814 ng
 RT: 2.575 min Scan# 83
 Delta R.T. 0.106 min
 Lab File: BF135174.D
 Acq: 12 Sep 2023 11:00

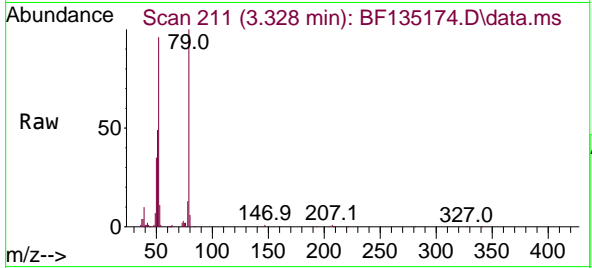
Tgt Ion: 88 Resp: 115367
 Ion Ratio Lower Upper
 88 100
 58 96.7 78.3 117.5
 43 36.9 29.4 44.0



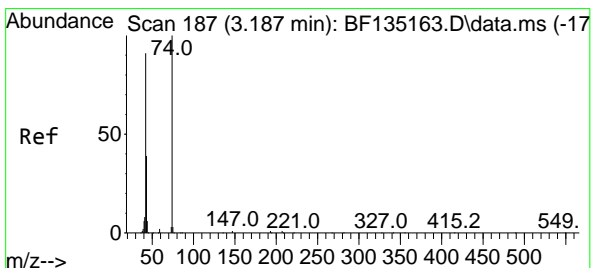
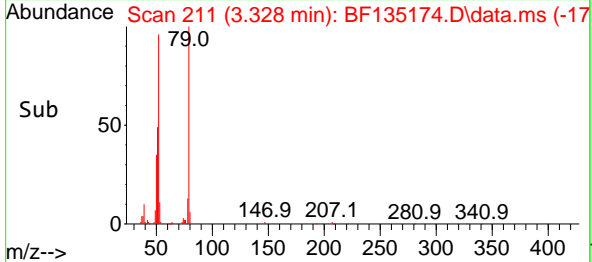
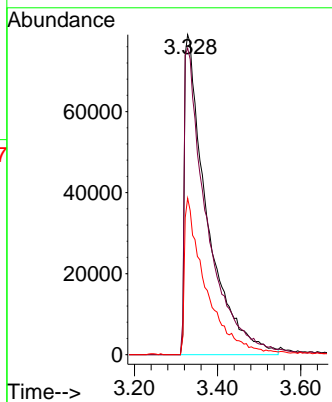


#3
 Pyridine
 Concen: 36.133 ng
 RT: 3.328 min Scan# 211
 Delta R.T. 0.112 min
 Lab File: BF135174.D
 Acq: 12 Sep 2023 11:00

Instrument :
 BNA_F
 ClientSampleId :

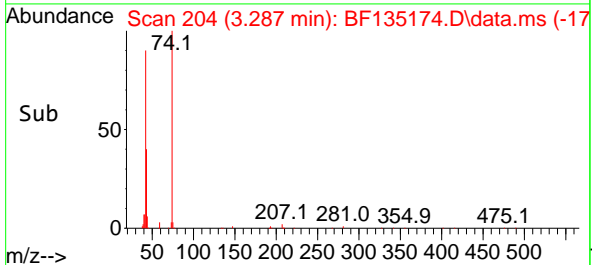
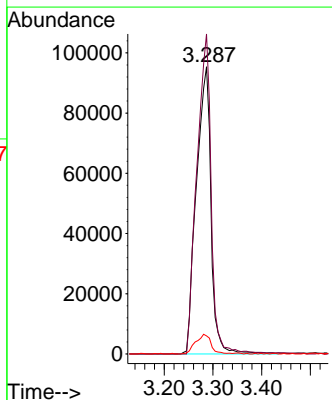
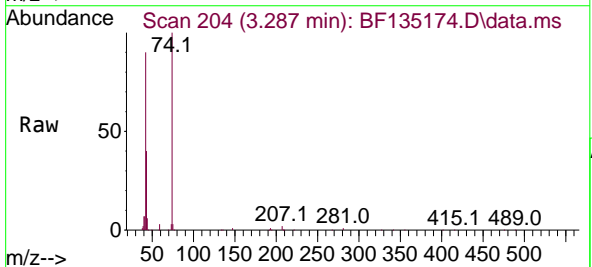


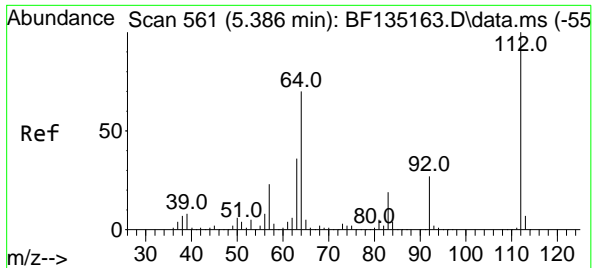
Tgt Ion: 79 Resp: 296695
 Ion Ratio Lower Upper
 79 100
 52 95.8 74.1 111.1
 51 48.9 35.8 53.8



#4
 n-Nitrosodimethylamine
 Concen: 45.714 ng
 RT: 3.287 min Scan# 204
 Delta R.T. 0.100 min
 Lab File: BF135174.D
 Acq: 12 Sep 2023 11:00

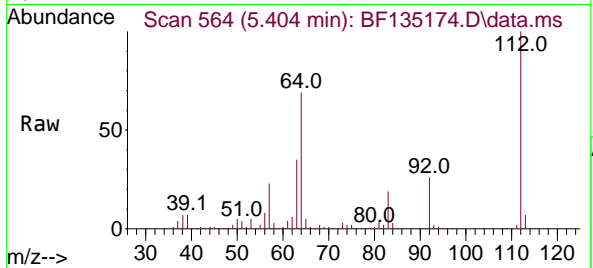
Tgt Ion: 42 Resp: 199191
 Ion Ratio Lower Upper
 42 100
 74 111.4 87.7 131.5
 44 6.3 5.6 8.4



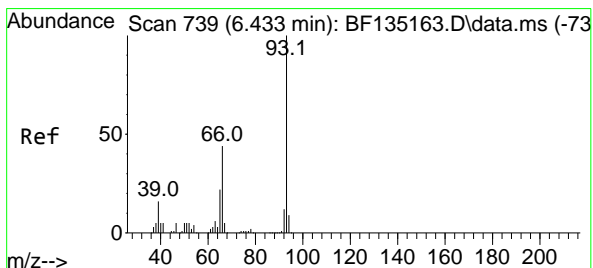
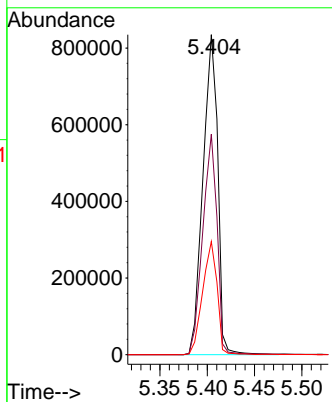
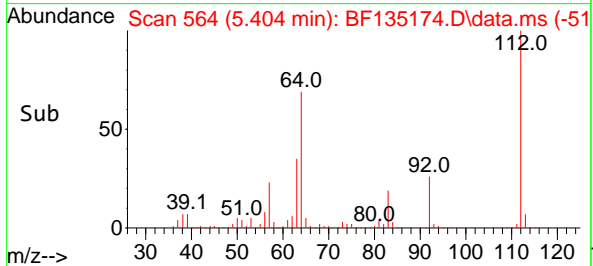


#5
 2-Fluorophenol
 Concen: 130.174 ng
 RT: 5.404 min Scan# 564
 Delta R.T. 0.018 min
 Lab File: BF135174.D
 Acq: 12 Sep 2023 11:00

Instrument :
 BNA_F
 ClientSampleId :

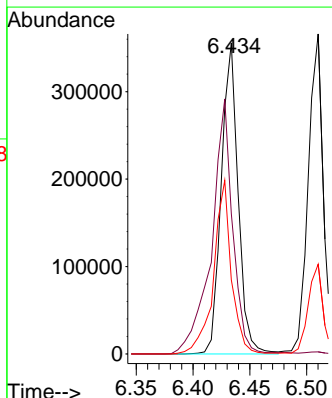
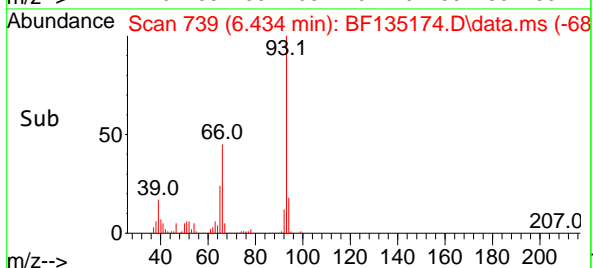
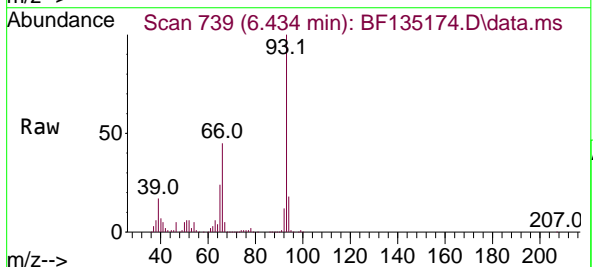


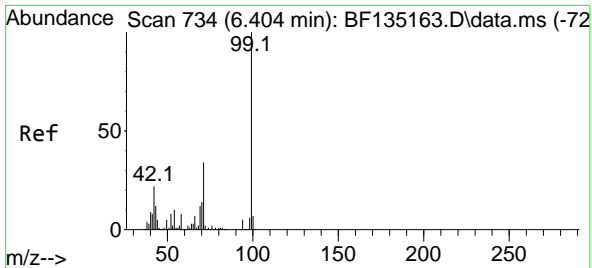
Tgt Ion:112 Resp: 905956
 Ion Ratio Lower Upper
 112 100
 64 68.9 55.9 83.9
 63 35.4 29.0 43.6



#6
 Aniline
 Concen: 31.673 ng
 RT: 6.434 min Scan# 739
 Delta R.T. 0.000 min
 Lab File: BF135174.D
 Acq: 12 Sep 2023 11:00

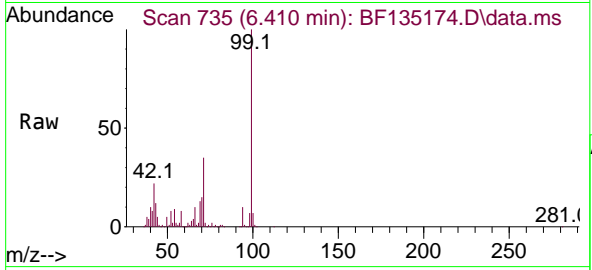
Tgt Ion: 93 Resp: 367556
 Ion Ratio Lower Upper
 93 100
 66 45.1 35.4 53.0
 65 23.8 17.8 26.8



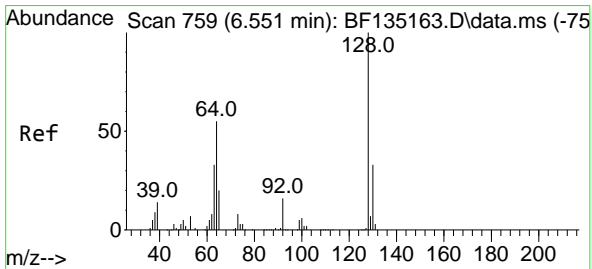
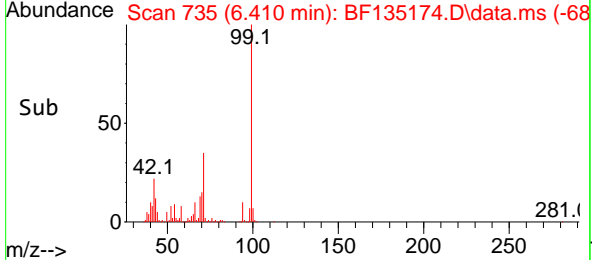
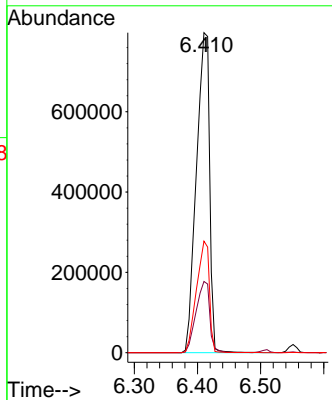


#7
 Phenol-d6
 Concen: 130.719 ng
 RT: 6.410 min Scan# 710
 Delta R.T. 0.006 min
 Lab File: BF135174.D
 Acq: 12 Sep 2023 11:00

Instrument :
 BNA_F
 ClientSampleId :

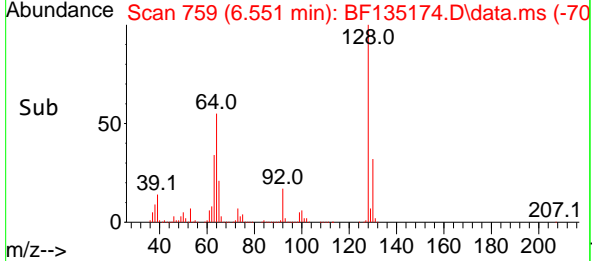
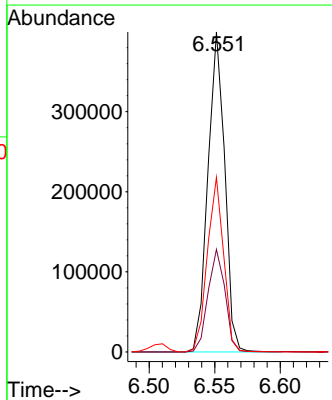
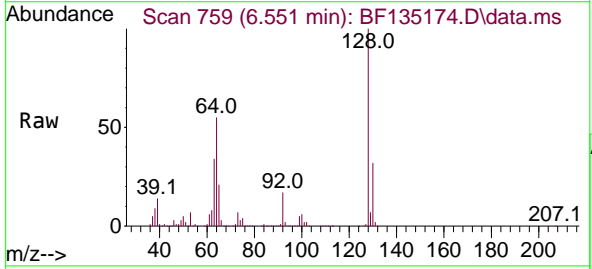


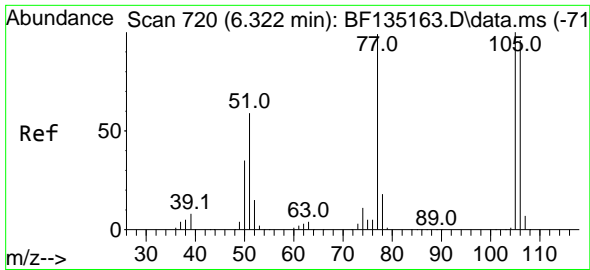
Tgt Ion: 99 Resp: 1156803
 Ion Ratio Lower Upper
 99 100
 42 22.2 17.9 26.9
 71 34.8 27.0 40.6



#8
 2-Chlorophenol
 Concen: 48.055 ng
 RT: 6.551 min Scan# 759
 Delta R.T. 0.000 min
 Lab File: BF135174.D
 Acq: 12 Sep 2023 11:00

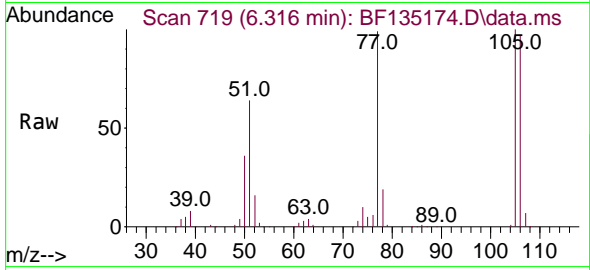
Tgt Ion:128 Resp: 357020
 Ion Ratio Lower Upper
 128 100
 130 32.1 12.7 52.7
 64 54.6 35.9 75.9



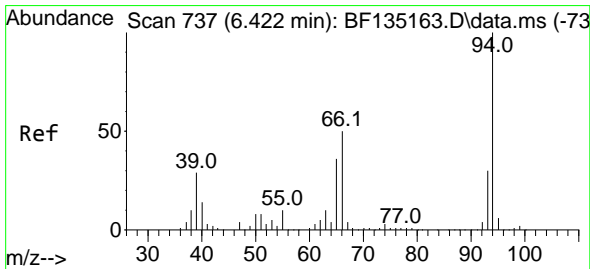
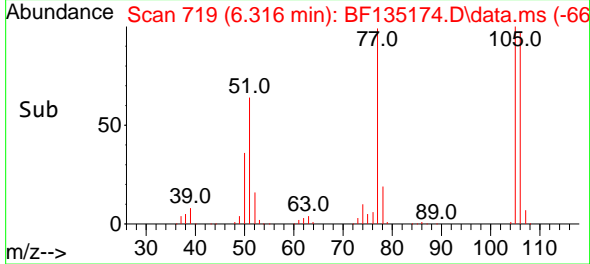
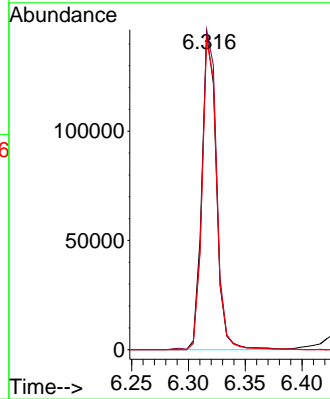


#9
Benzaldehyde
Concen: 25.618 ng
RT: 6.316 min Scan# 719
Delta R.T. -0.006 min
Lab File: BF135174.D
Acq: 12 Sep 2023 11:00

Instrument :
BNA_F
ClientSampleId :

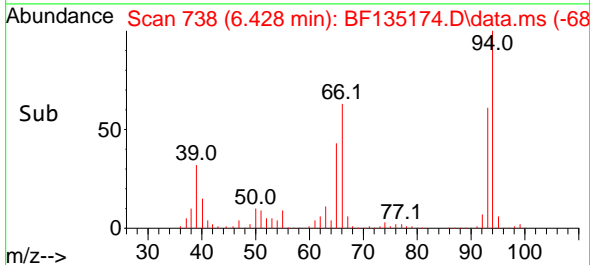
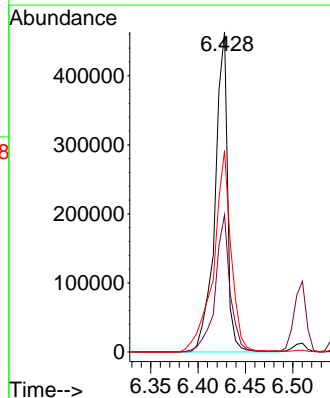
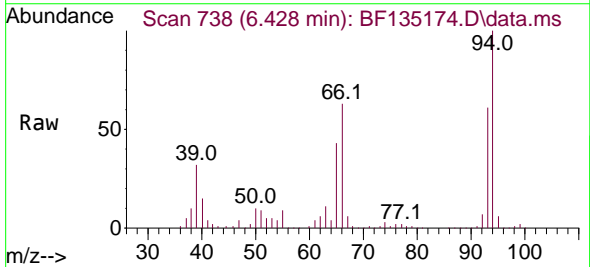


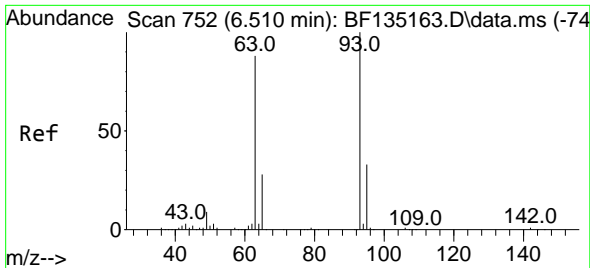
Tgt Ion: 77 Resp: 129152
Ion Ratio Lower Upper
77 100
105 101.1 81.4 121.4
106 97.8 76.9 116.9



#10
Phenol
Concen: 43.998 ng
RT: 6.428 min Scan# 738
Delta R.T. 0.006 min
Lab File: BF135174.D
Acq: 12 Sep 2023 11:00

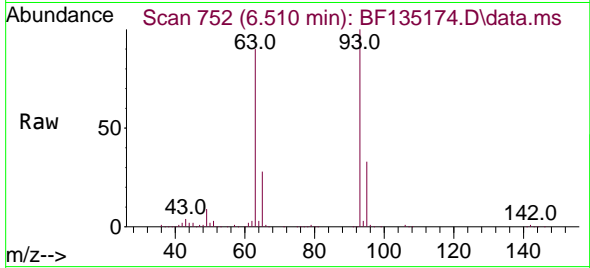
Tgt Ion: 94 Resp: 426954
Ion Ratio Lower Upper
94 100
65 42.8 15.9 55.9
66 62.9 29.8 69.8



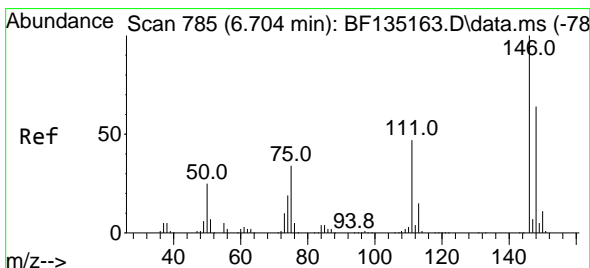
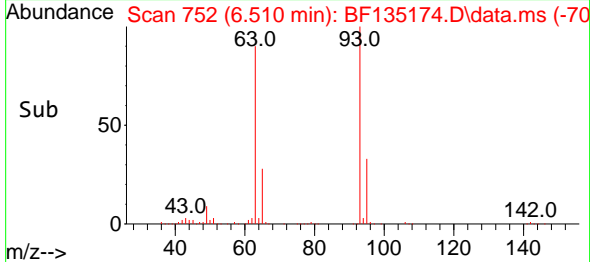
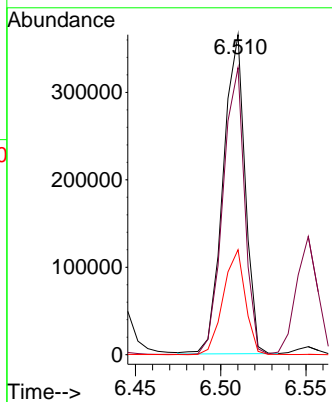


#11
 bis(2-Chloroethyl)ether
 Concen: 45.075 ng
 RT: 6.510 min Scan# 752
 Delta R.T. 0.000 min
 Lab File: BF135174.D
 Acq: 12 Sep 2023 11:00

Instrument :
 BNA_F
 ClientSampleId :

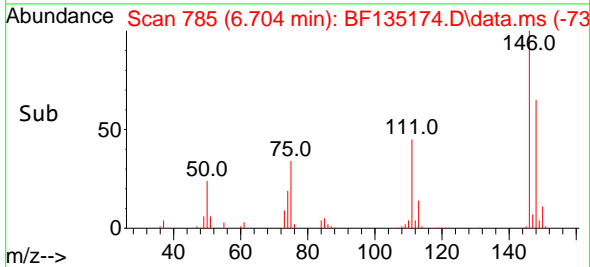
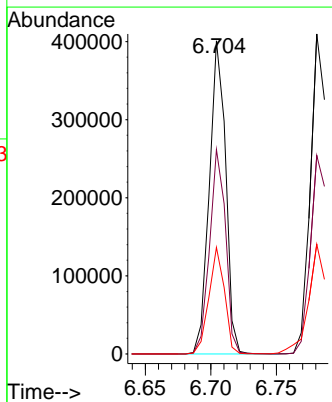
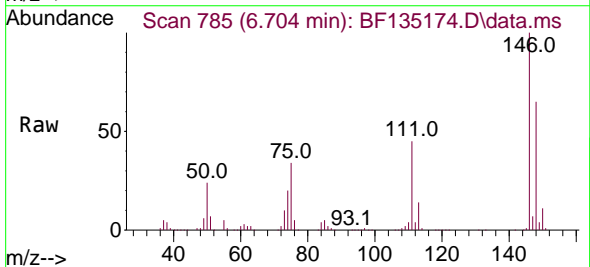


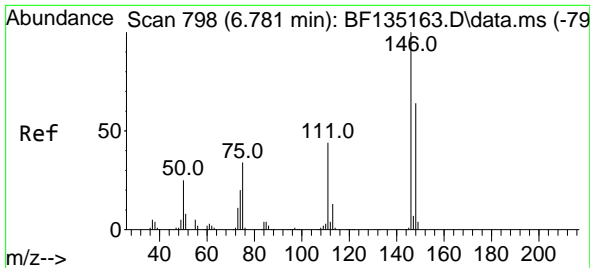
Tgt Ion: 93 Resp: 328100
 Ion Ratio Lower Upper
 93 100
 63 89.7 67.3 107.3
 95 32.8 12.7 52.7



#12
 1,3-Dichlorobenzene
 Concen: 46.034 ng
 RT: 6.704 min Scan# 785
 Delta R.T. 0.000 min
 Lab File: BF135174.D
 Acq: 12 Sep 2023 11:00

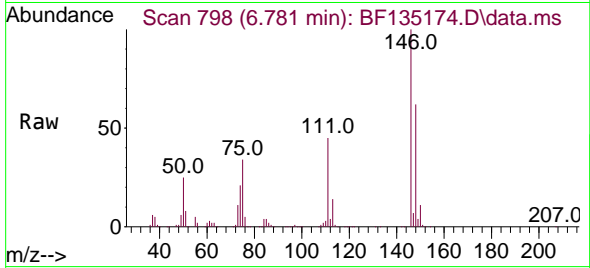
Tgt Ion:146 Resp: 347576
 Ion Ratio Lower Upper
 146 100
 148 65.3 51.3 76.9
 75 34.1 27.4 41.2



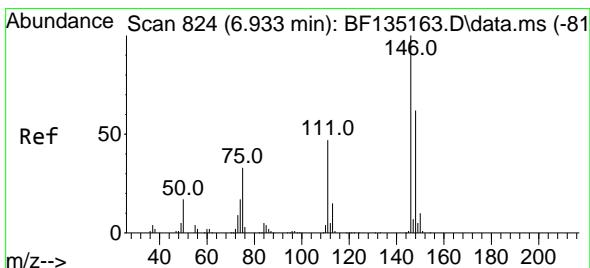
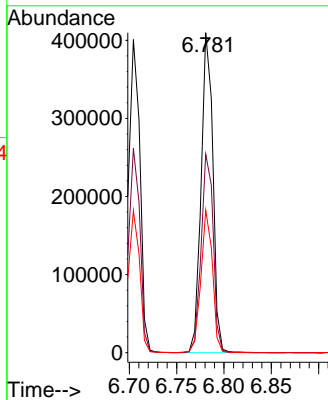
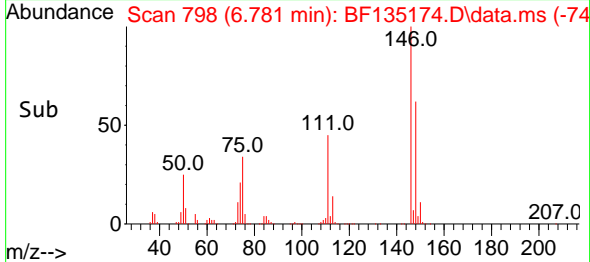


#13
 1,4-Dichlorobenzene
 Concen: 45.908 ng
 RT: 6.781 min Scan# 798
 Delta R.T. 0.000 min
 Lab File: BF135174.D
 Acq: 12 Sep 2023 11:00

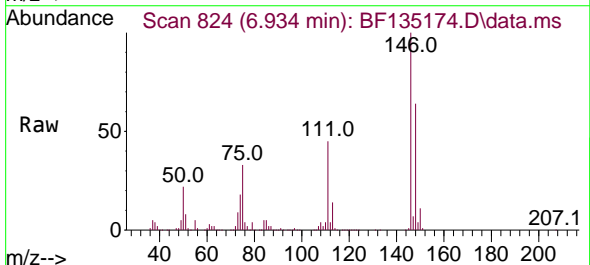
Instrument :
 BNA_F
 ClientSampleId :



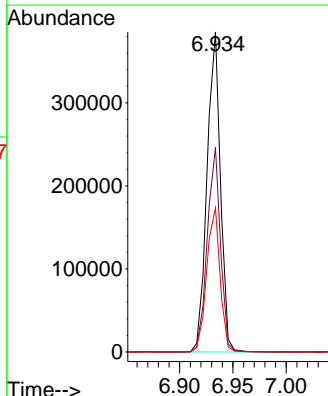
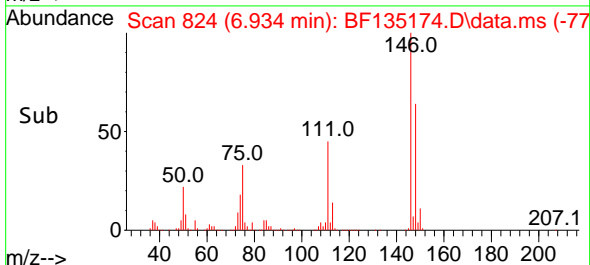
Tgt Ion:146 Resp: 352658
 Ion Ratio Lower Upper
 146 100
 148 62.0 51.3 76.9
 111 44.6 35.1 52.7

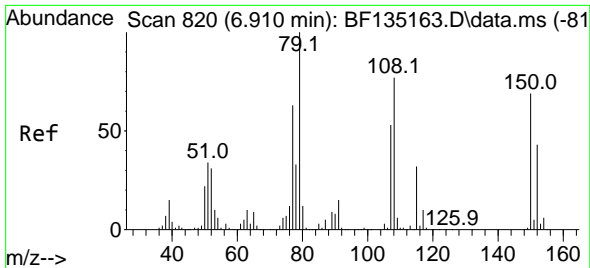


#14
 1,2-Dichlorobenzene
 Concen: 47.302 ng
 RT: 6.934 min Scan# 824
 Delta R.T. 0.000 min
 Lab File: BF135174.D
 Acq: 12 Sep 2023 11:00



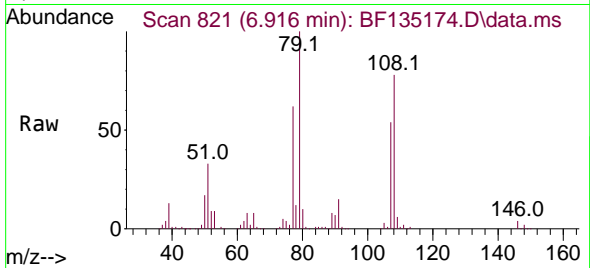
Tgt Ion:146 Resp: 337442
 Ion Ratio Lower Upper
 146 100
 148 63.9 49.7 74.5
 111 45.0 37.4 56.2





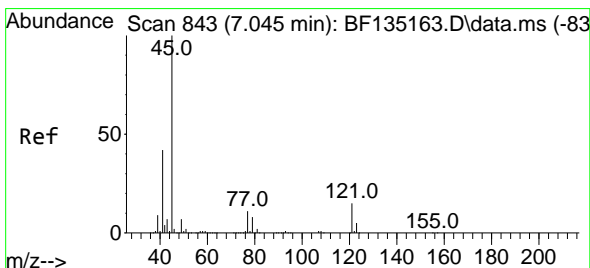
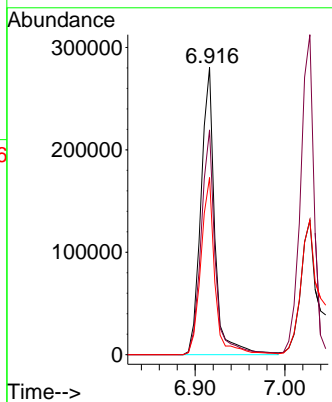
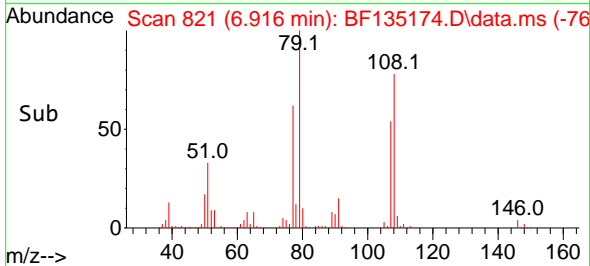
#15
 Benzyl Alcohol
 Concen: 47.550 ng
 RT: 6.916 min Scan# 81
 Delta R.T. 0.006 min
 Lab File: BF135174.D
 Acq: 12 Sep 2023 11:00

Instrument :
 BNA_F
 ClientSampleId :

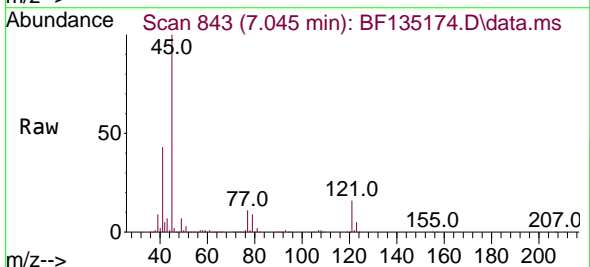


Tgt Ion: 79 Resp: 301958

Ion	Ratio	Lower	Upper
79	100		
108	78.3	61.2	91.8
77	61.7	50.5	75.7

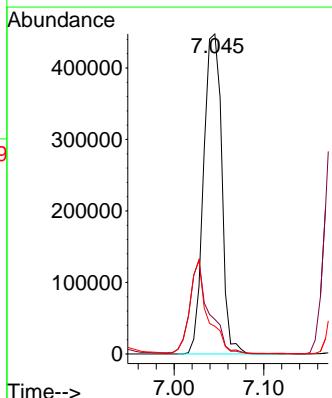
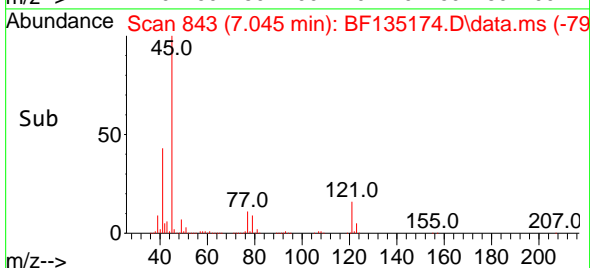


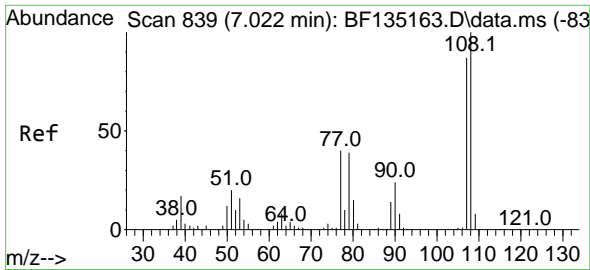
#16
 2,2'-oxybis(1-Chloropropane)
 Concen: 45.613 ng
 RT: 7.045 min Scan# 843
 Delta R.T. 0.000 min
 Lab File: BF135174.D
 Acq: 12 Sep 2023 11:00



Tgt Ion: 45 Resp: 625822

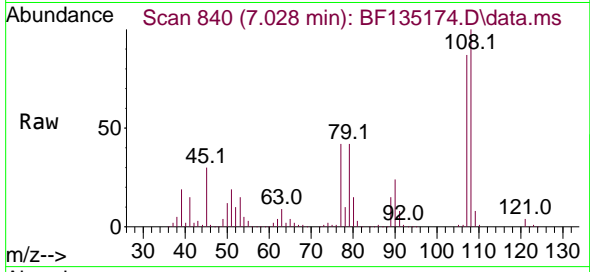
Ion	Ratio	Lower	Upper
45	100		
77	10.8	0.0	30.6
79	8.6	0.0	28.3



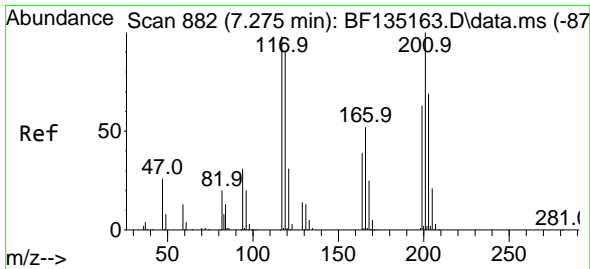
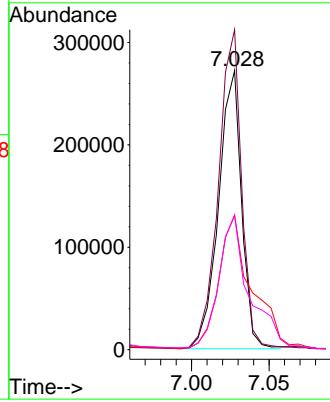
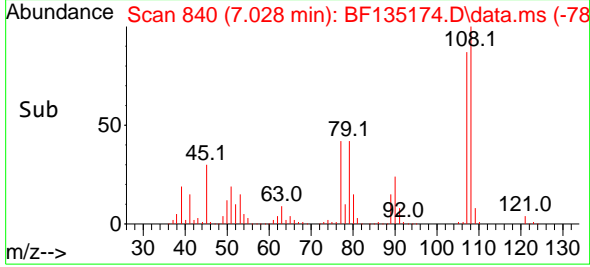


#17
 2-Methylphenol
 Concen: 42.780 ng
 RT: 7.028 min Scan# 840
 Delta R.T. 0.006 min
 Lab File: BF135174.D
 Acq: 12 Sep 2023 11:00

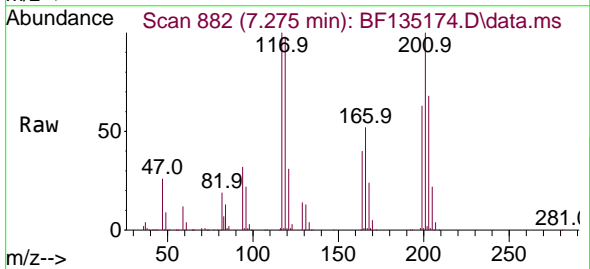
Instrument :
 BNA_F
 ClientSampleId :



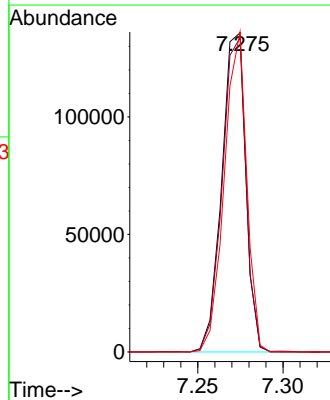
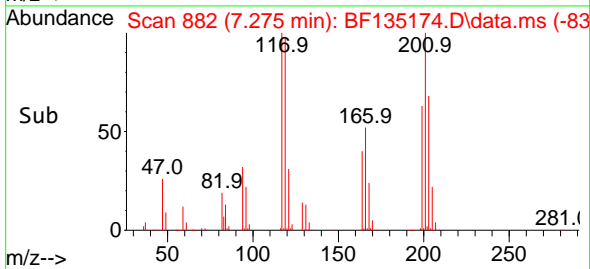
Tgt Ion:107 Resp: 280470
 Ion Ratio Lower Upper
 107 100
 108 114.6 92.0 138.0
 77 48.2 36.7 55.1
 79 48.2 36.3 54.5

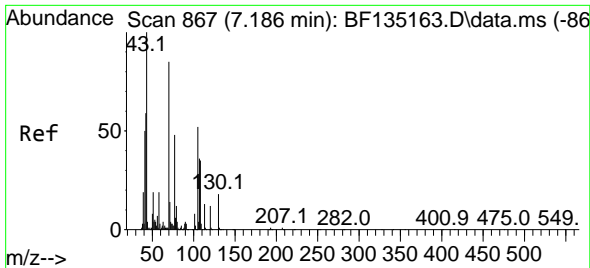


#18
 Hexachloroethane
 Concen: 47.015 ng
 RT: 7.275 min Scan# 882
 Delta R.T. 0.000 min
 Lab File: BF135174.D
 Acq: 12 Sep 2023 11:00



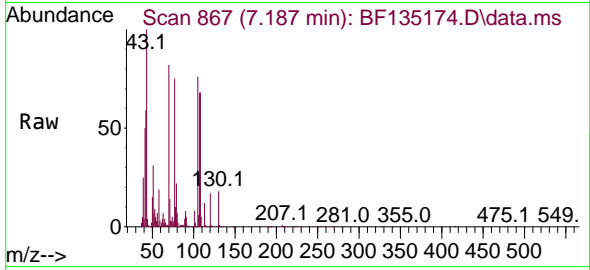
Tgt Ion:117 Resp: 133447
 Ion Ratio Lower Upper
 117 100
 119 98.5 74.7 112.1
 201 100.3 81.8 122.8





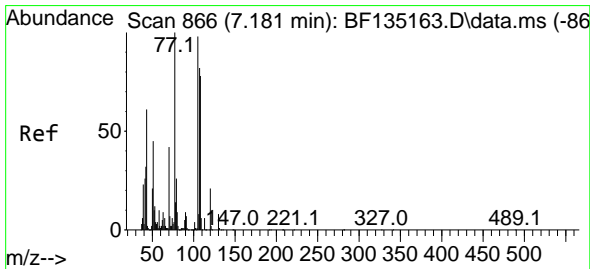
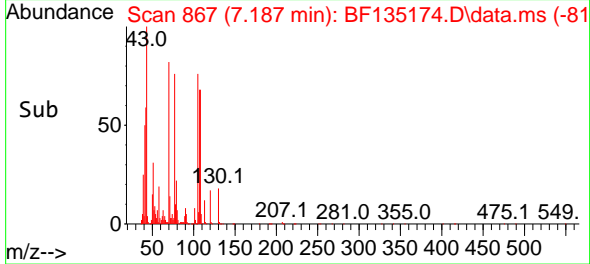
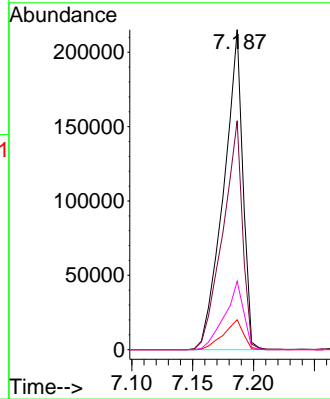
#19
 n-Nitroso-di-n-propylamine
 Concen: 43.049 ng
 RT: 7.187 min Scan# 80
 Delta R.T. 0.000 min
 Lab File: BF135174.D
 Acq: 12 Sep 2023 11:00

Instrument :
 BNA_F
 ClientSampleId :

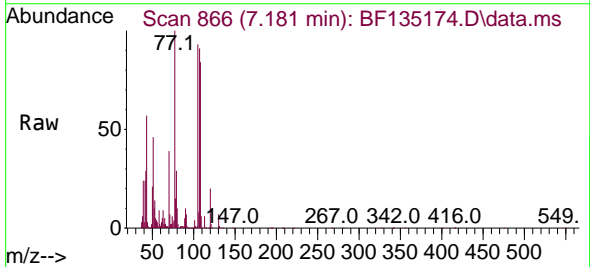


Tgt Ion: 70 Resp: 235968

Ion	Ratio	Lower	Upper
70	100		
42	71.6	55.4	83.0
101	9.4	7.7	11.5
130	21.4	17.0	25.6

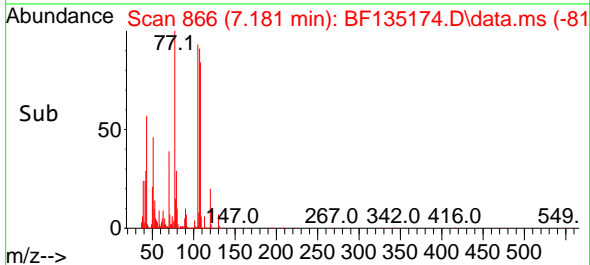
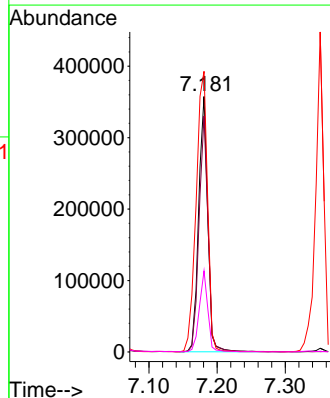


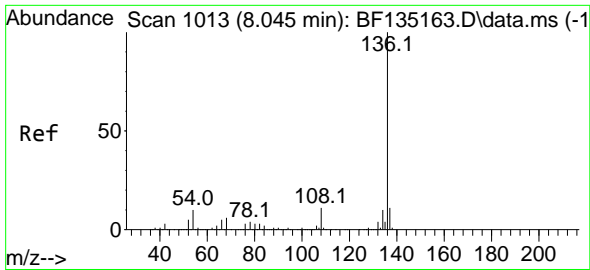
#20
 3+4-Methylphenols
 Concen: 42.102 ng
 RT: 7.181 min Scan# 866
 Delta R.T. 0.000 min
 Lab File: BF135174.D
 Acq: 12 Sep 2023 11:00



Tgt Ion: 107 Resp: 331909

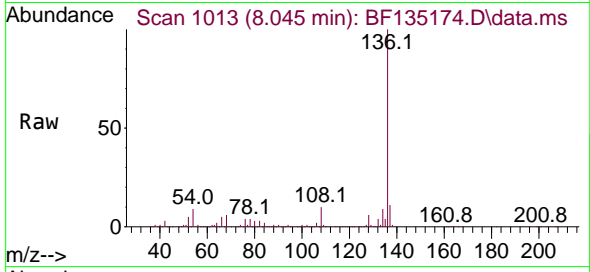
Ion	Ratio	Lower	Upper
107	100		
108	92.3	74.7	114.7
77	109.8	102.0	142.0
79	31.7	11.7	51.7



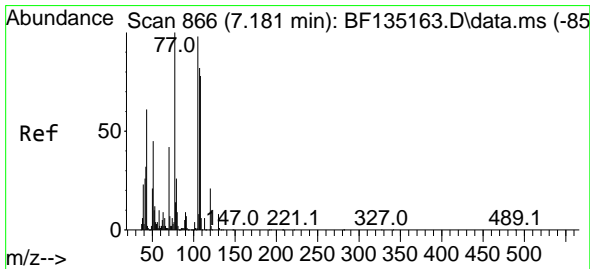
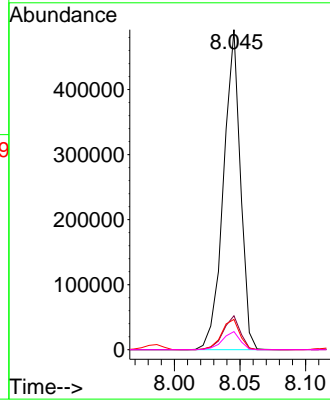
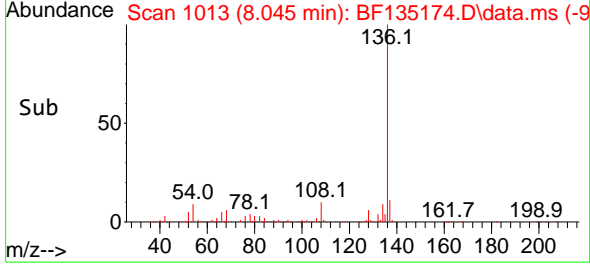


#21
 Naphthalene-d8
 Concen: 20.000 ng
 RT: 8.045 min Scan# 1013
 Delta R.T. 0.000 min
 Lab File: BF135174.D
 Acq: 12 Sep 2023 11:00

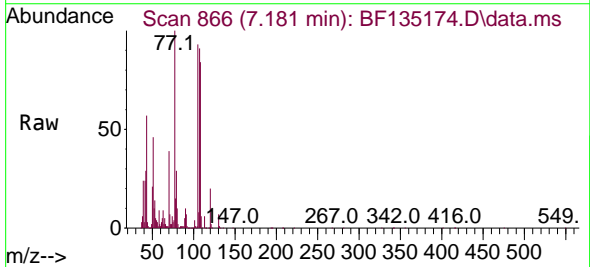
Instrument :
 BNA_F
 ClientSampleId :



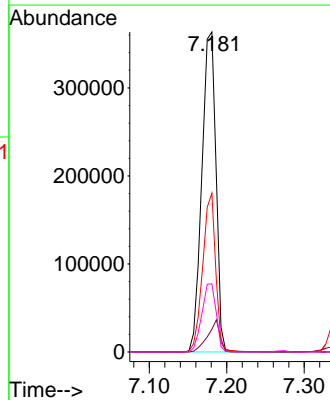
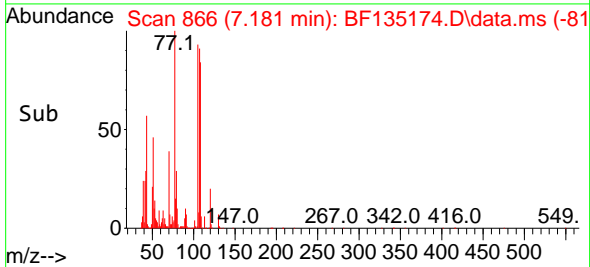
Tgt Ion:136 Resp: 440841
 Ion Ratio Lower Upper
 136 100
 137 10.6 8.8 13.2
 54 9.5 7.7 11.5
 68 5.6 4.6 6.8

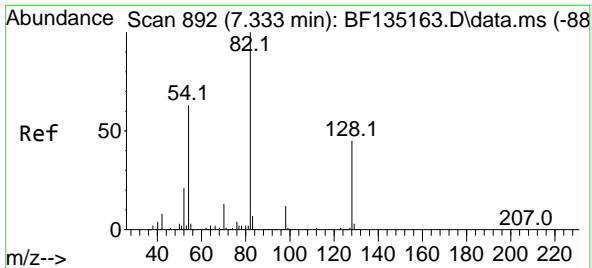


#22
 Acetophenone
 Concen: 45.635 ng
 RT: 7.181 min Scan# 866
 Delta R.T. 0.000 min
 Lab File: BF135174.D
 Acq: 12 Sep 2023 11:00



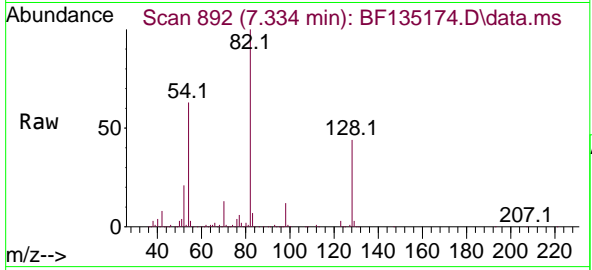
Tgt Ion:105 Resp: 459949
 Ion Ratio Lower Upper
 105 100
 71 7.1 5.8 8.6
 51 49.6 37.0 55.4
 120 21.3 17.0 25.6



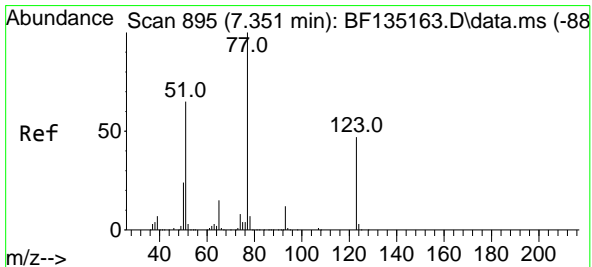
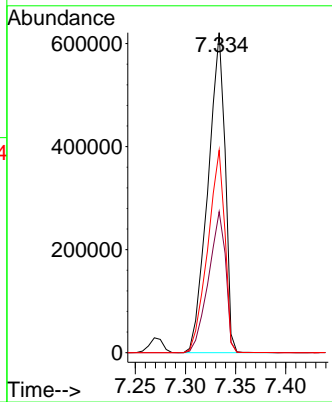
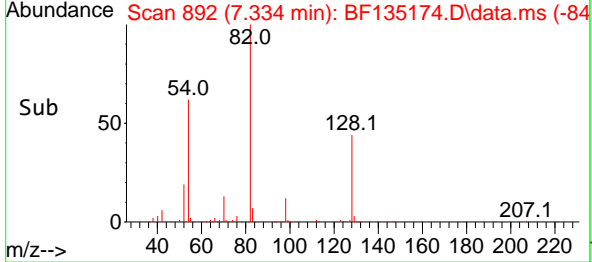


#23
 Nitrobenzene-d5
 Concen: 91.125 ng
 RT: 7.334 min Scan# 891
 Delta R.T. 0.000 min
 Lab File: BF135174.D
 Acq: 12 Sep 2023 11:00

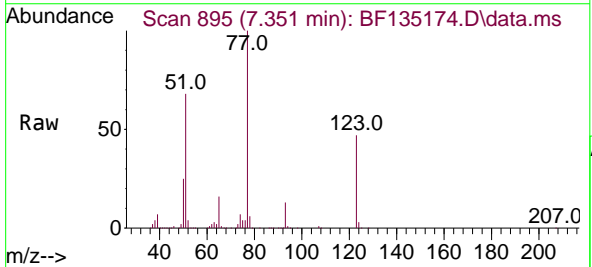
Instrument :
 BNA_F
 ClientSampleId :



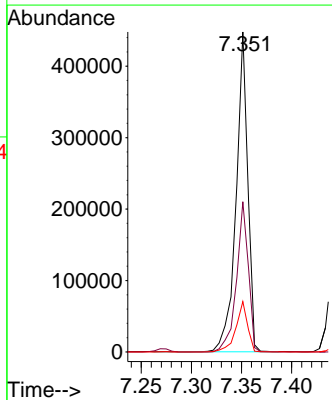
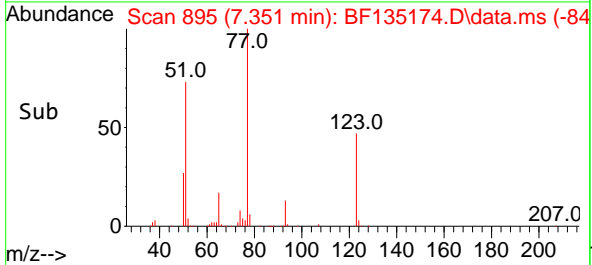
Tgt Ion: 82 Resp: 739407
 Ion Ratio Lower Upper
 82 100
 128 44.1 35.8 53.6
 54 63.2 50.6 76.0

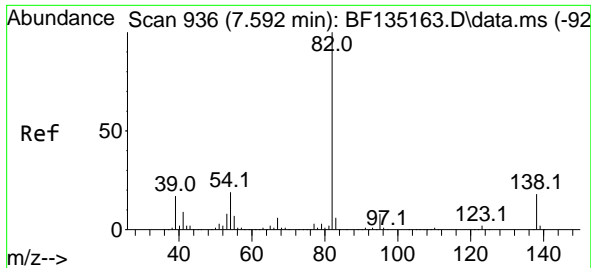


#24
 Nitrobenzene
 Concen: 45.513 ng
 RT: 7.351 min Scan# 895
 Delta R.T. 0.000 min
 Lab File: BF135174.D
 Acq: 12 Sep 2023 11:00



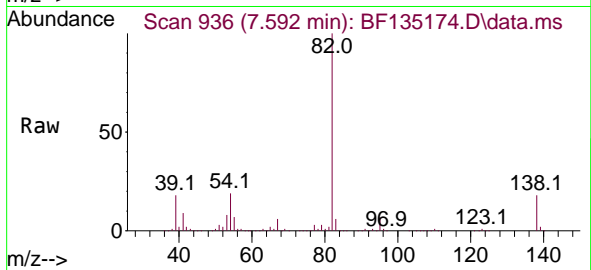
Tgt Ion: 77 Resp: 365015
 Ion Ratio Lower Upper
 77 100
 123 47.0 37.6 56.4
 65 15.8 12.2 18.4



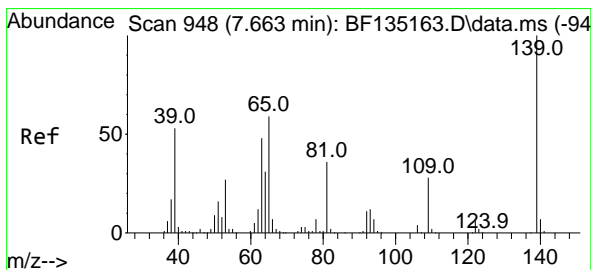
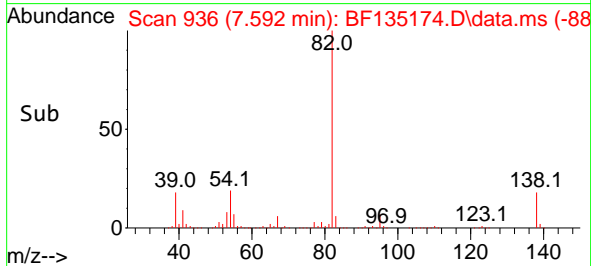
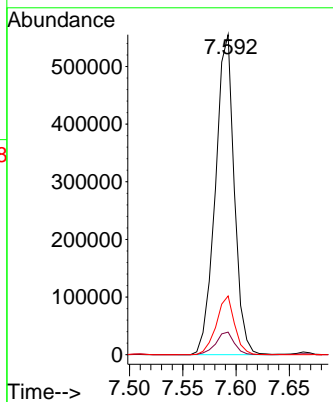


#25
 Isophorone
 Concen: 45.670 ng
 RT: 7.592 min Scan# 911
 Delta R.T. 0.000 min
 Lab File: BF135174.D
 Acq: 12 Sep 2023 11:00

Instrument :
 BNA_F
 ClientSampleId :

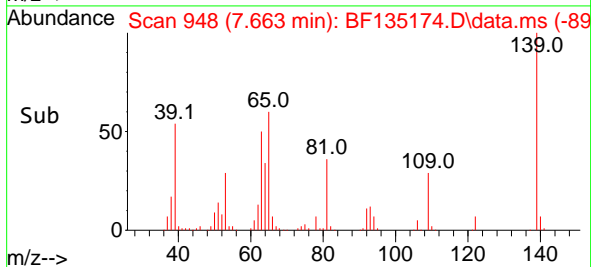
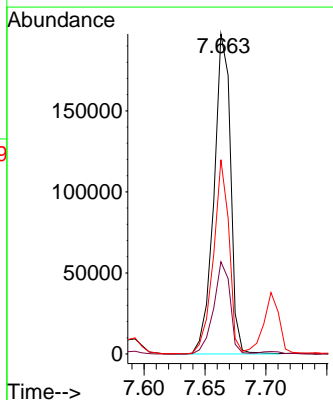
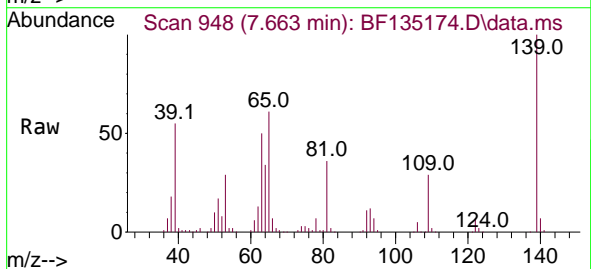


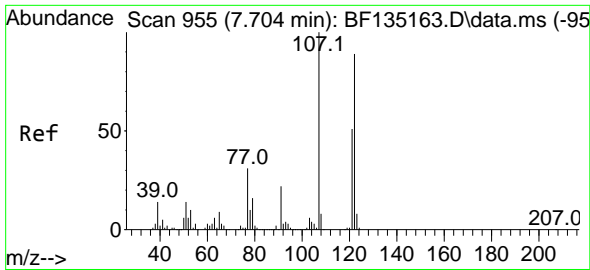
Tgt Ion: 82 Resp: 680482
 Ion Ratio Lower Upper
 82 100
 95 7.1 6.0 9.0
 138 18.3 14.5 21.7



#26
 2-Nitrophenol
 Concen: 48.791 ng
 RT: 7.663 min Scan# 948
 Delta R.T. 0.000 min
 Lab File: BF135174.D
 Acq: 12 Sep 2023 11:00

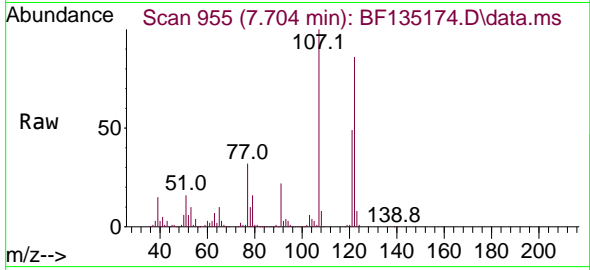
Tgt Ion: 139 Resp: 187806
 Ion Ratio Lower Upper
 139 100
 109 28.8 22.6 33.8
 65 60.7 47.0 70.4



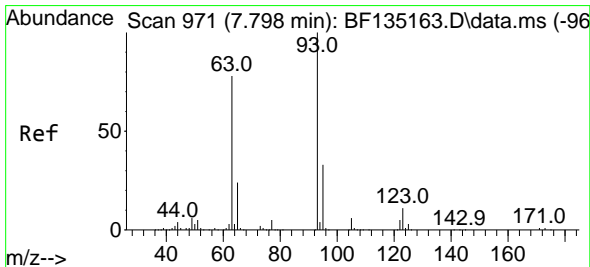
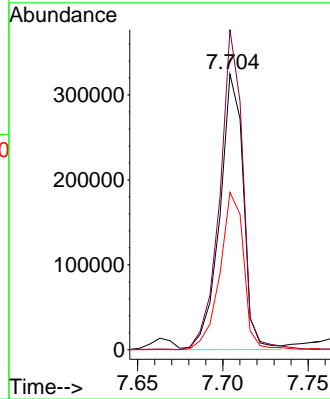
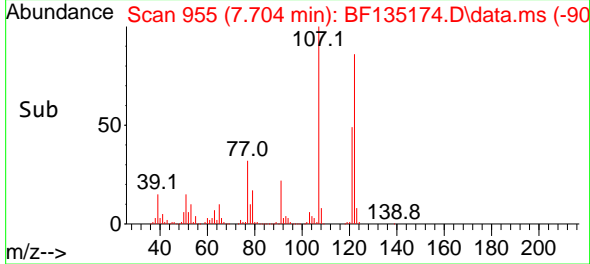


#27
 2,4-Dimethylphenol
 Concen: 48.236 ng
 RT: 7.704 min Scan# 911
 Delta R.T. 0.000 min
 Lab File: BF135174.D
 Acq: 12 Sep 2023 11:00

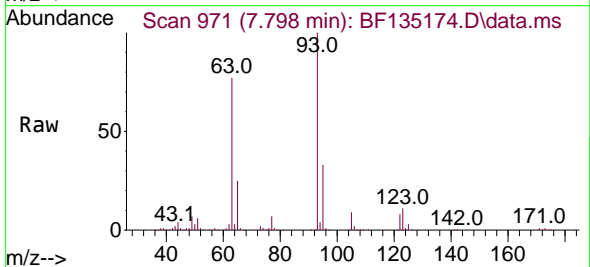
Instrument :
 BNA_F
 ClientSampleId :



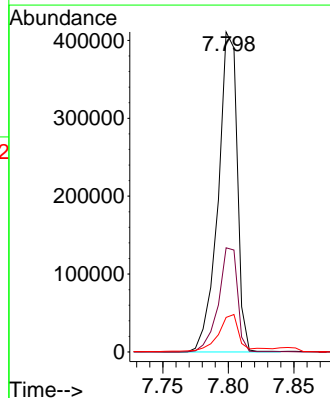
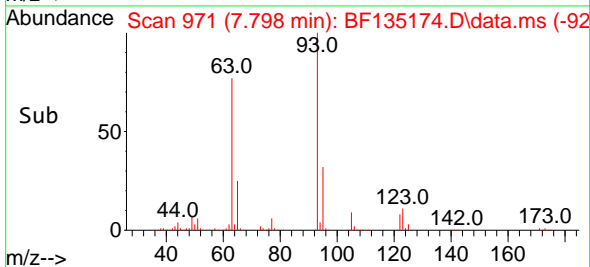
Tgt Ion:122 Resp: 312092
 Ion Ratio Lower Upper
 122 100
 107 116.2 90.2 135.4
 121 57.1 46.3 69.5

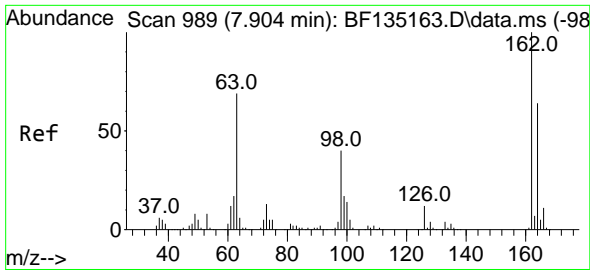


#28
 bis(2-Chloroethoxy)methane
 Concen: 46.595 ng
 RT: 7.798 min Scan# 971
 Delta R.T. 0.000 min
 Lab File: BF135174.D
 Acq: 12 Sep 2023 11:00



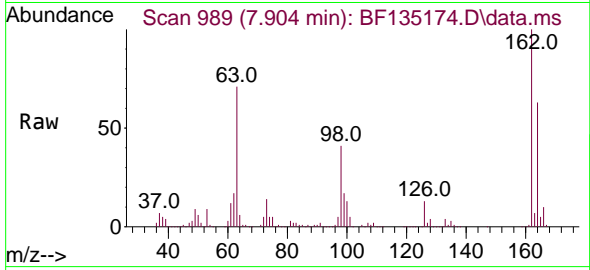
Tgt Ion: 93 Resp: 415539
 Ion Ratio Lower Upper
 93 100
 95 32.5 26.2 39.2
 123 10.8 8.8 13.2



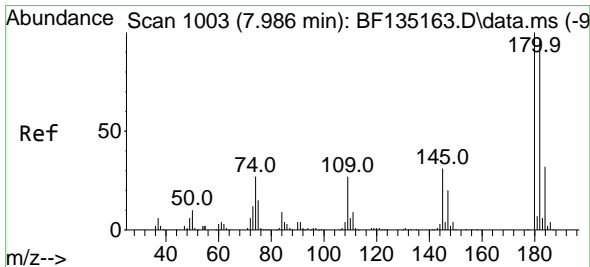
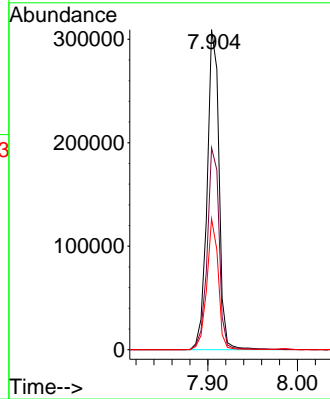
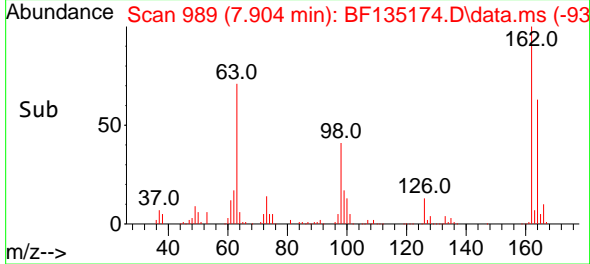


#29
 2,4-Dichlorophenol
 Concen: 47.617 ng
 RT: 7.904 min Scan# 989
 Delta R.T. 0.000 min
 Lab File: BF135174.D
 Acq: 12 Sep 2023 11:00

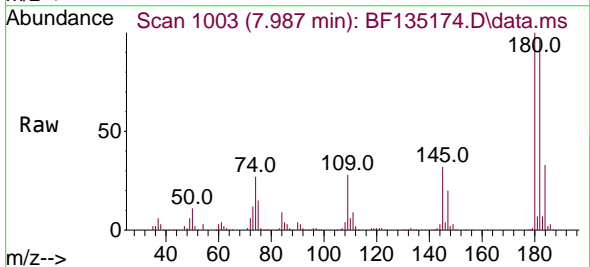
Instrument :
 BNA_F
 ClientSampleId :



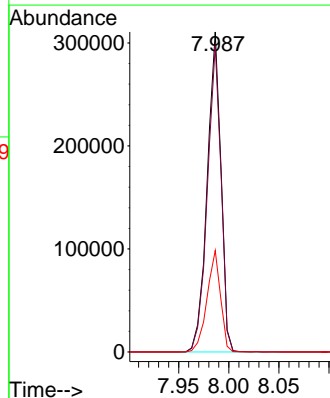
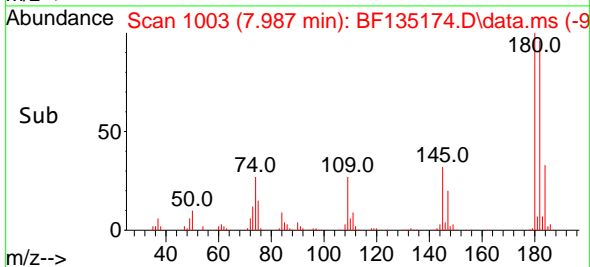
Tgt Ion:162 Resp: 285478
 Ion Ratio Lower Upper
 162 100
 164 63.1 44.1 84.1
 98 40.9 20.3 60.3

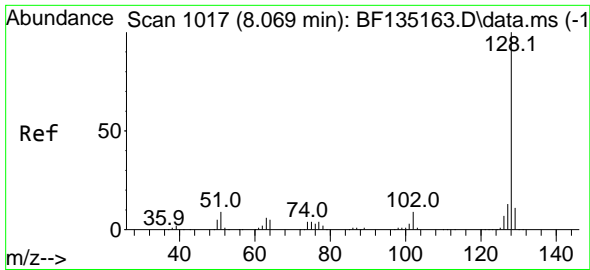


#30
 1,2,4-Trichlorobenzene
 Concen: 47.526 ng
 RT: 7.987 min Scan# 1003
 Delta R.T. 0.000 min
 Lab File: BF135174.D
 Acq: 12 Sep 2023 11:00



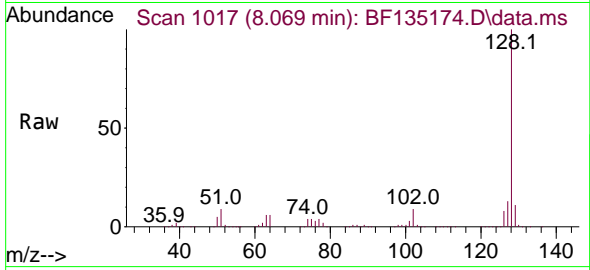
Tgt Ion:180 Resp: 297818
 Ion Ratio Lower Upper
 180 100
 182 95.7 76.9 115.3
 145 31.7 24.5 36.7



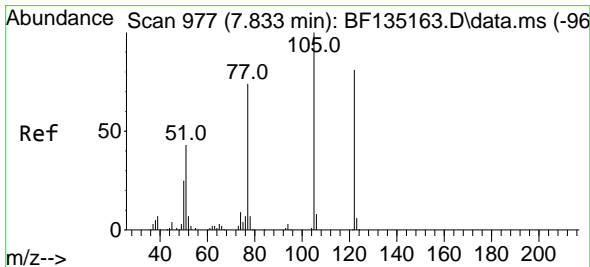
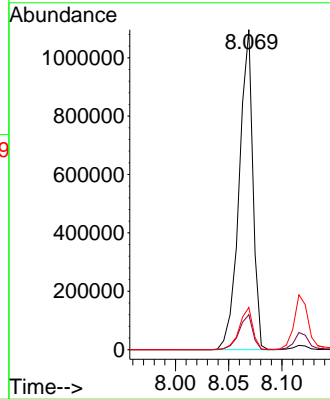
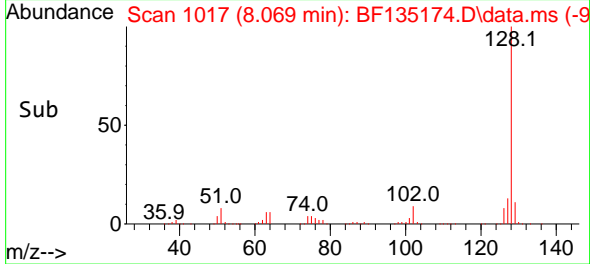


#31
 Naphthalene
 Concen: 46.040 ng
 RT: 8.069 min Scan# 10
 Delta R.T. 0.000 min
 Lab File: BF135174.D
 Acq: 12 Sep 2023 11:00

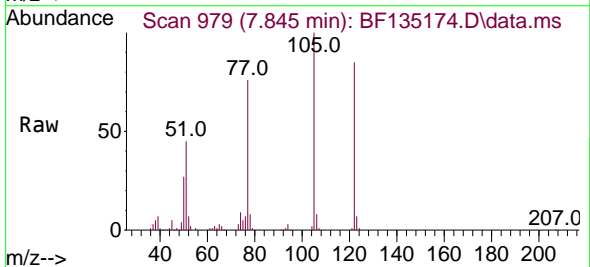
Instrument :
 BNA_F
 ClientSampleId :



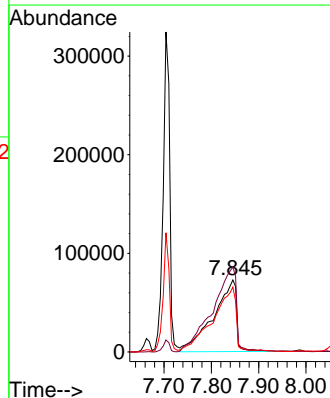
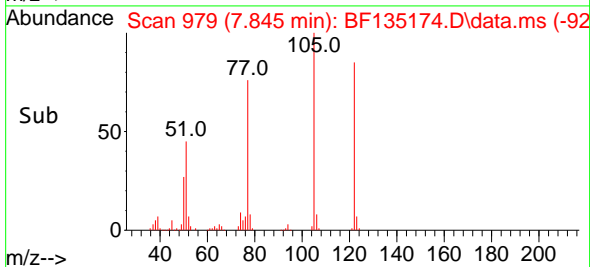
Tgt Ion:128 Resp: 986134
 Ion Ratio Lower Upper
 128 100
 129 10.9 8.7 13.1
 127 13.2 10.7 16.1

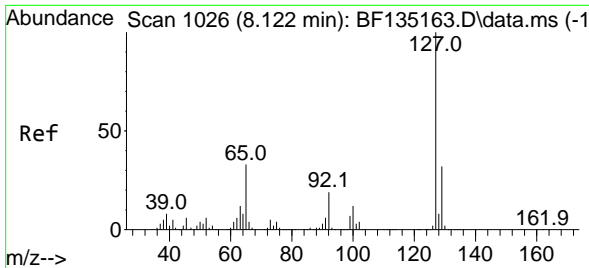


#32
 Benzoic acid
 Concen: 50.655 ng
 RT: 7.845 min Scan# 979
 Delta R.T. 0.012 min
 Lab File: BF135174.D
 Acq: 12 Sep 2023 11:00



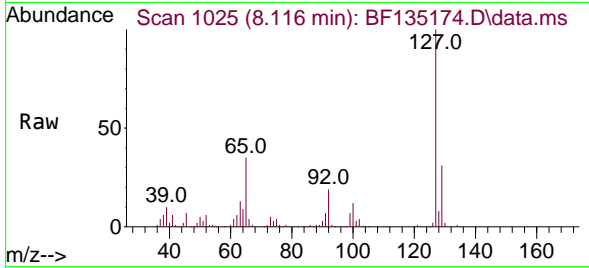
Tgt Ion:122 Resp: 246793
 Ion Ratio Lower Upper
 122 100
 105 117.9 99.9 139.9
 77 90.2 70.0 110.0





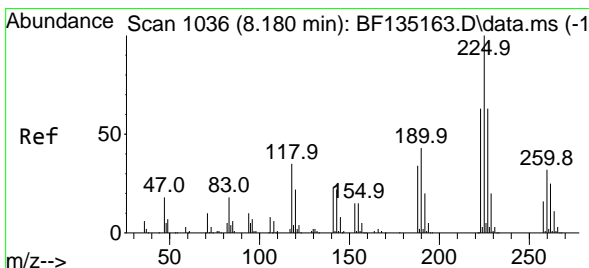
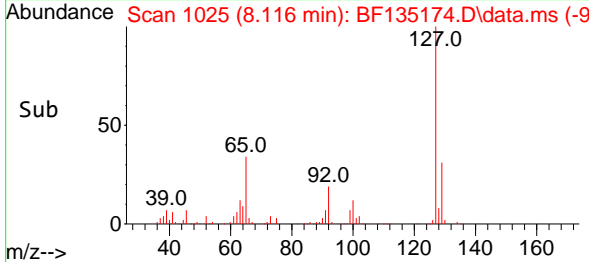
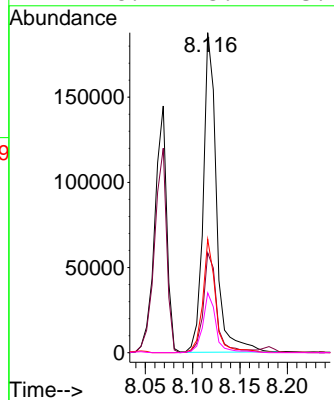
#33
 4-Chloroaniline
 Concen: 19.486 ng
 RT: 8.116 min Scan# 1025
 Delta R.T. -0.006 min
 Lab File: BF135174.D
 Acq: 12 Sep 2023 11:00

Instrument : BNA_F
 ClientSampleId :



Tgt Ion:127 Resp: 183119

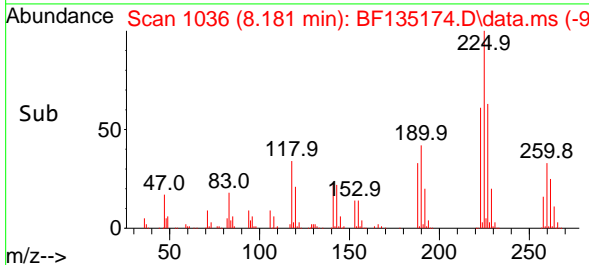
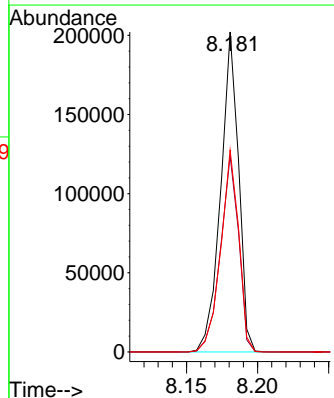
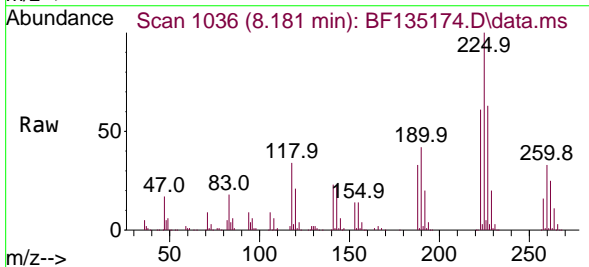
Ion	Ratio	Lower	Upper
127	100		
129	31.2	25.8	38.8
65	35.5	26.6	39.8
92	18.7	15.4	23.2

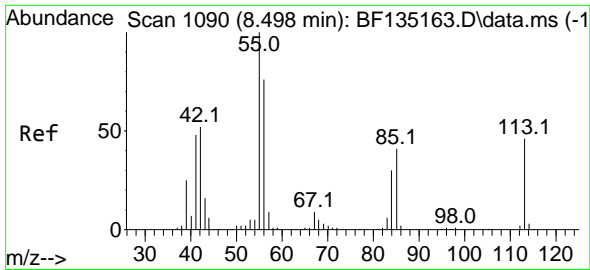


#34
 Hexachlorobutadiene
 Concen: 46.724 ng
 RT: 8.181 min Scan# 1036
 Delta R.T. 0.000 min
 Lab File: BF135174.D
 Acq: 12 Sep 2023 11:00

Tgt Ion:225 Resp: 176549

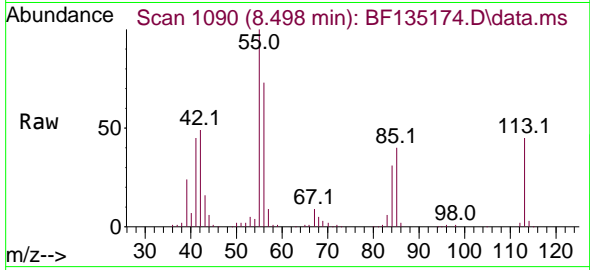
Ion	Ratio	Lower	Upper
225	100		
223	61.4	50.6	75.8
227	63.1	50.8	76.2



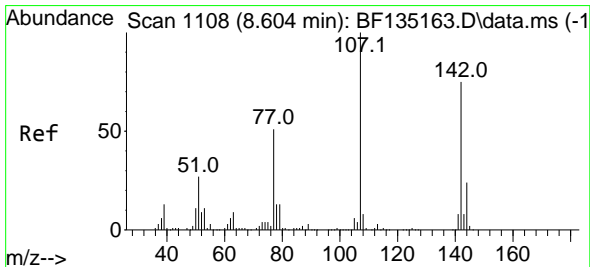
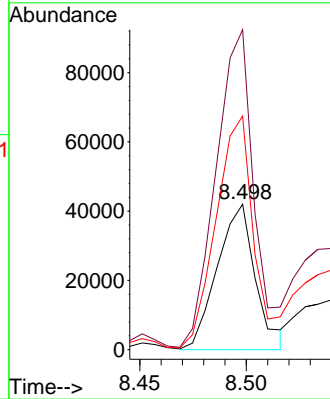
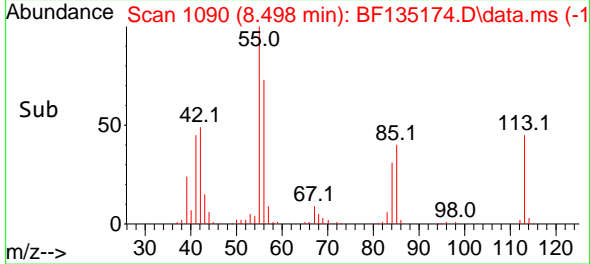


#35
 Caprolactam
 Concen: 25.965 ng
 RT: 8.498 min Scan# 1090
 Delta R.T. 0.000 min
 Lab File: BF135174.D
 Acq: 12 Sep 2023 11:00

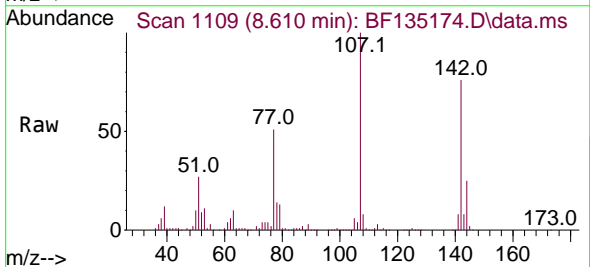
Instrument :
 BNA_F
 ClientSampleId :



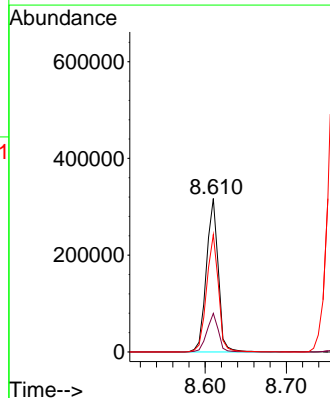
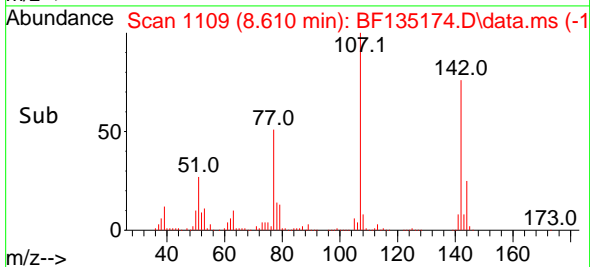
Tgt Ion:113 Resp: 52245
 Ion Ratio Lower Upper
 113 100
 55 219.9 199.3 239.3
 56 160.5 146.3 186.3

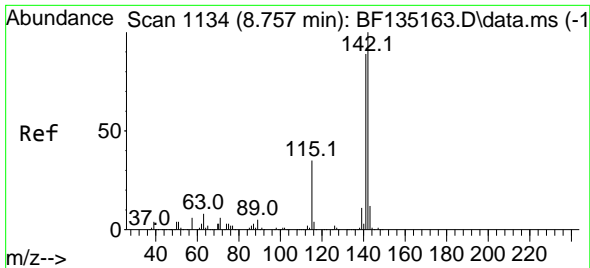


#36
 4-Chloro-3-methylphenol
 Concen: 48.230 ng
 RT: 8.610 min Scan# 1109
 Delta R.T. 0.006 min
 Lab File: BF135174.D
 Acq: 12 Sep 2023 11:00



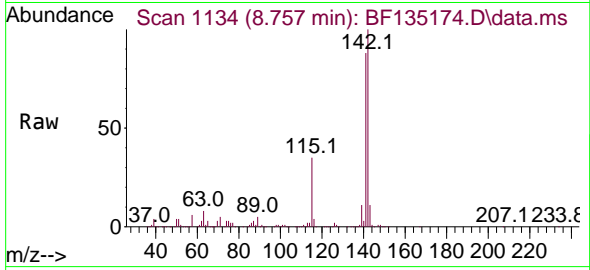
Tgt Ion:107 Resp: 321367
 Ion Ratio Lower Upper
 107 100
 144 25.1 19.0 28.4
 142 76.5 60.2 90.2



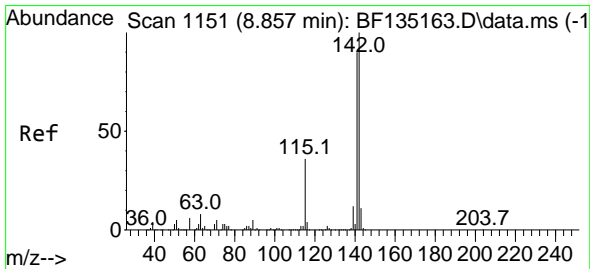
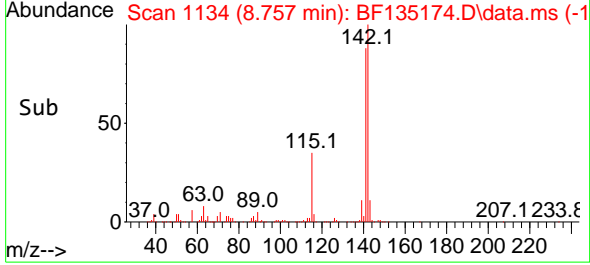
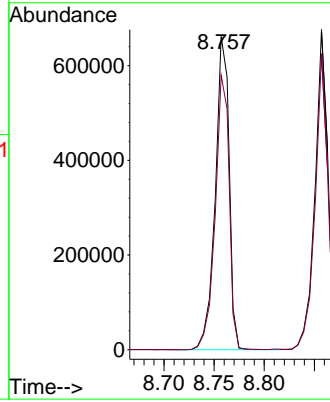


#37
 2-Methylnaphthalene
 Concen: 44.150 ng
 RT: 8.757 min Scan# 1113
 Delta R.T. 0.000 min
 Lab File: BF135174.D
 Acq: 12 Sep 2023 11:00

Instrument :
 BNA_F
 ClientSampleId :

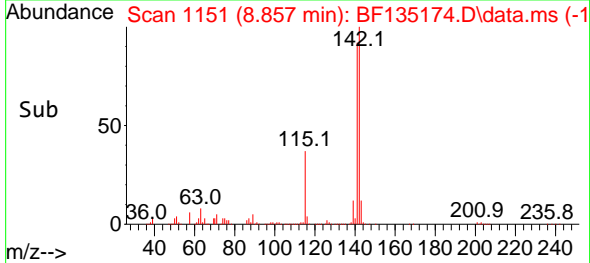
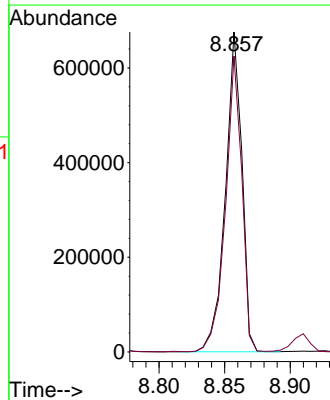
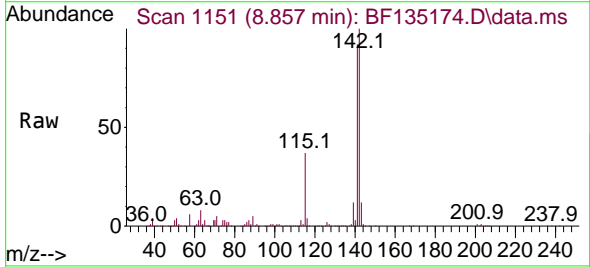


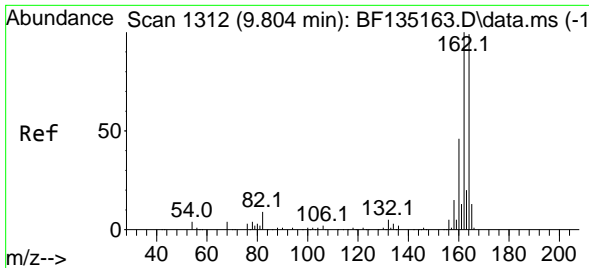
Tgt Ion:142 Resp: 635672
 Ion Ratio Lower Upper
 142 100
 141 87.7 71.0 106.6



#38
 1-Methylnaphthalene
 Concen: 43.792 ng
 RT: 8.857 min Scan# 1151
 Delta R.T. 0.000 min
 Lab File: BF135174.D
 Acq: 12 Sep 2023 11:00

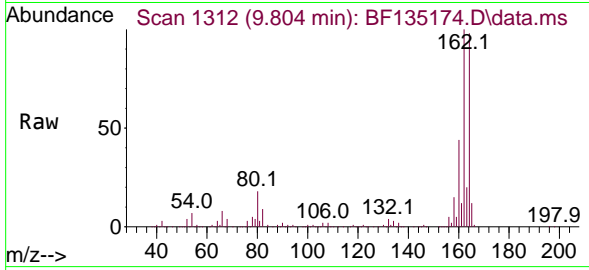
Tgt Ion:142 Resp: 590303
 Ion Ratio Lower Upper
 142 100
 141 92.5 72.4 108.6



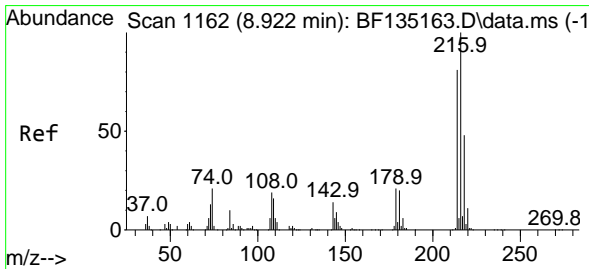
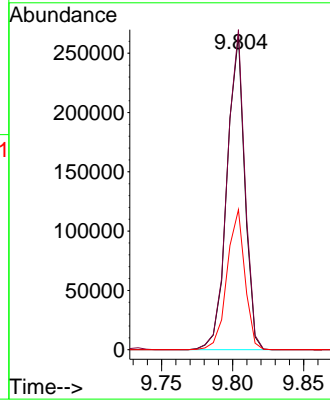
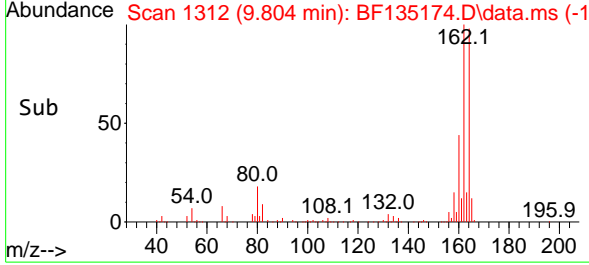


#39
 Acenaphthene-d10
 Concen: 20.000 ng
 RT: 9.804 min Scan# 111
 Delta R.T. 0.000 min
 Lab File: BF135174.D
 Acq: 12 Sep 2023 11:00

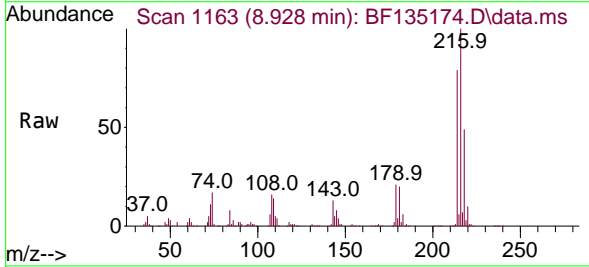
Instrument :
 BNA_F
 ClientSampleId :



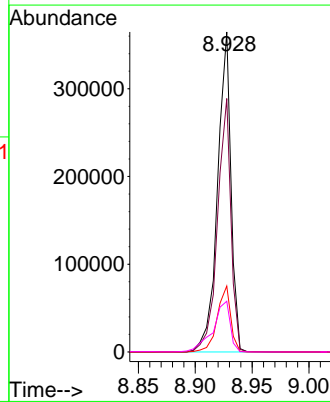
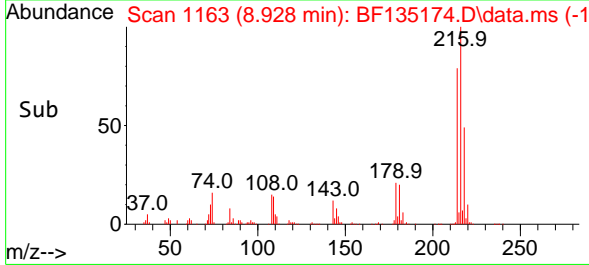
Tgt Ion:164 Resp: 229554
 Ion Ratio Lower Upper
 164 100
 162 101.8 81.0 121.4
 160 44.5 37.0 55.4

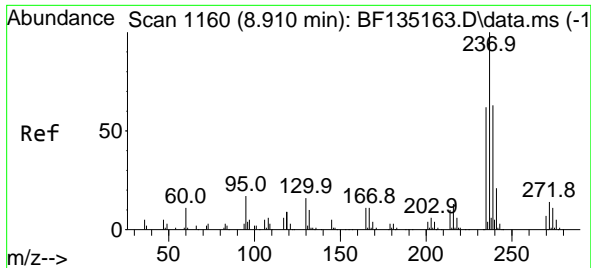


#40
 1,2,4,5-Tetrachlorobenzene
 Concen: 45.119 ng
 RT: 8.928 min Scan# 1163
 Delta R.T. 0.006 min
 Lab File: BF135174.D
 Acq: 12 Sep 2023 11:00



Tgt Ion:216 Resp: 300058
 Ion Ratio Lower Upper
 216 100
 214 79.1 63.7 95.5
 179 20.6 16.7 25.1
 108 20.5 14.9 22.3



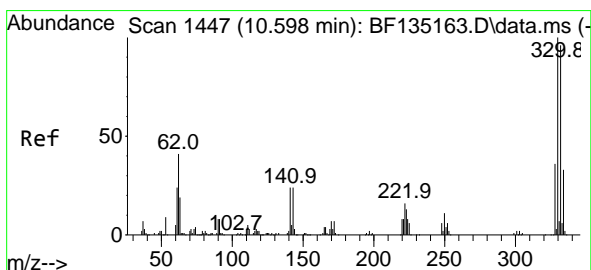
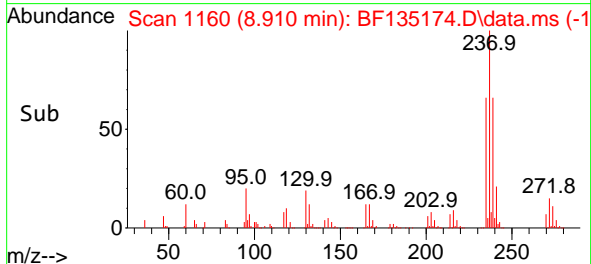
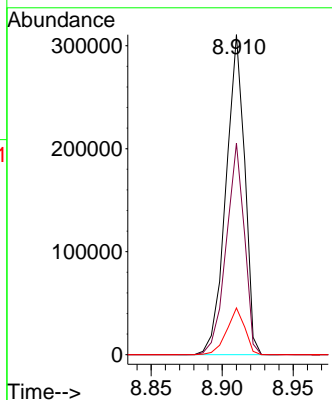
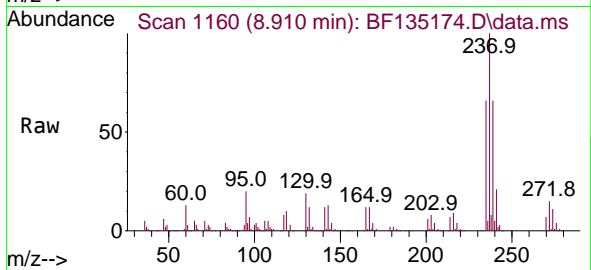


#41
 Hexachlorocyclopentadiene
 Concen: 95.626 ng
 RT: 8.910 min Scan# 1116
 Delta R.T. -0.000 min
 Lab File: BF135174.D
 Acq: 12 Sep 2023 11:00

Instrument :
 BNA_F
 ClientSampleId :

Tgt Ion:237 Resp: 284874

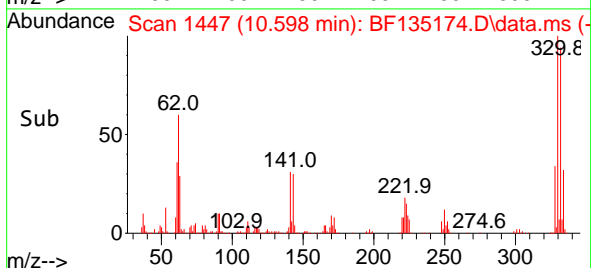
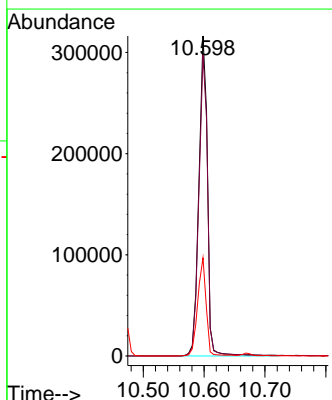
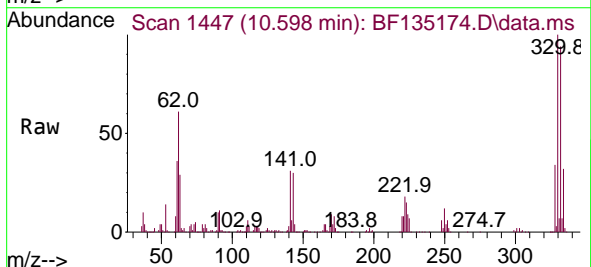
Ion	Ratio	Lower	Upper
237	100		
235	66.1	41.8	81.8
272	14.6	0.0	33.6

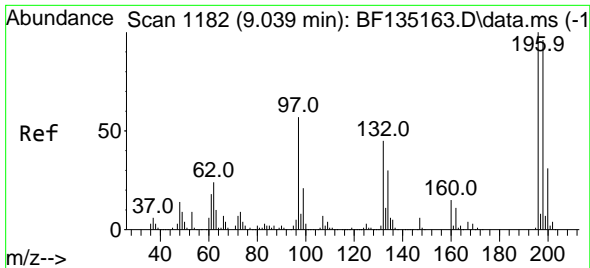


#42
 2,4,6-Tribromophenol
 Concen: 135.498 ng
 RT: 10.598 min Scan# 1447
 Delta R.T. 0.000 min
 Lab File: BF135174.D
 Acq: 12 Sep 2023 11:00

Tgt Ion:330 Resp: 309099

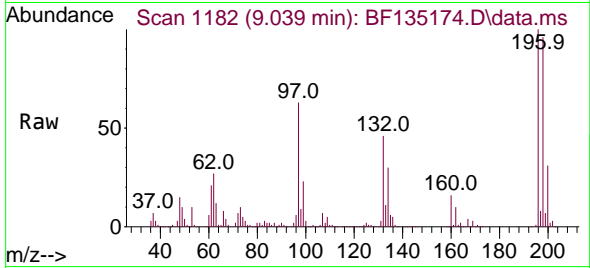
Ion	Ratio	Lower	Upper
330	100		
332	94.9	77.3	115.9
141	30.4	25.8	38.8



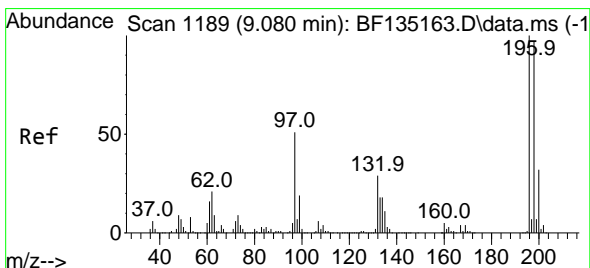
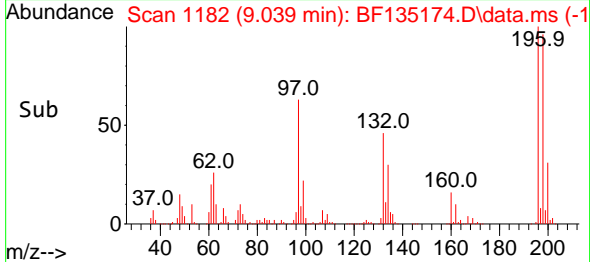
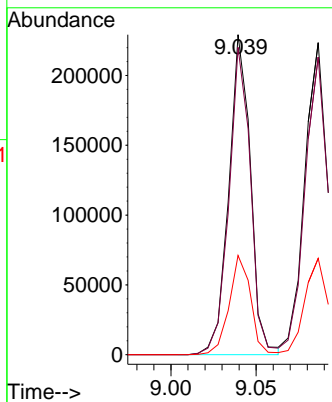


#43
 2,4,6-Trichlorophenol
 Concen: 46.706 ng
 RT: 9.039 min Scan# 1182
 Delta R.T. 0.000 min
 Lab File: BF135174.D
 Acq: 12 Sep 2023 11:00

Instrument :
 BNA_F
 ClientSampleId :

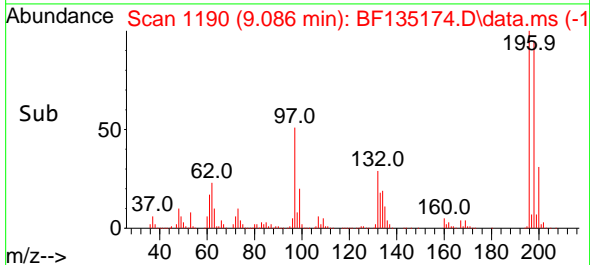
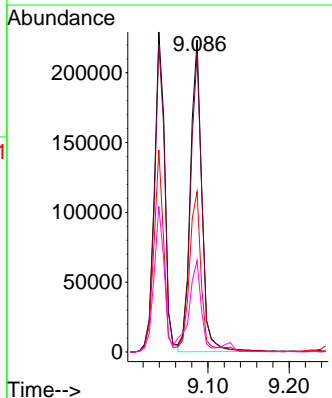
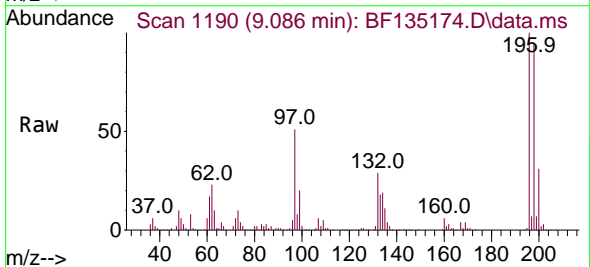


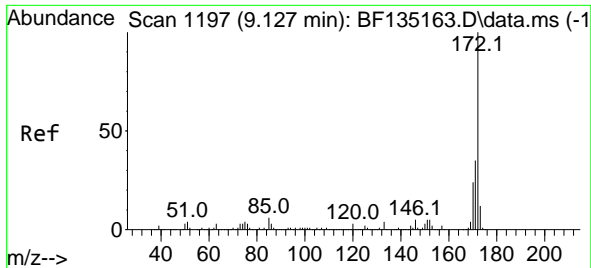
Tgt Ion:196 Resp: 203370
 Ion Ratio Lower Upper
 196 100
 198 96.0 77.0 115.6
 200 31.0 24.5 36.7



#44
 2,4,5-Trichlorophenol
 Concen: 43.713 ng
 RT: 9.086 min Scan# 1190
 Delta R.T. 0.006 min
 Lab File: BF135174.D
 Acq: 12 Sep 2023 11:00

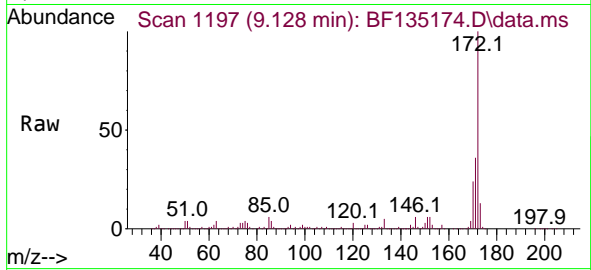
Tgt Ion:196 Resp: 219197
 Ion Ratio Lower Upper
 196 100
 198 95.4 77.5 116.3
 97 51.4 40.5 60.7
 132 29.3 23.3 34.9



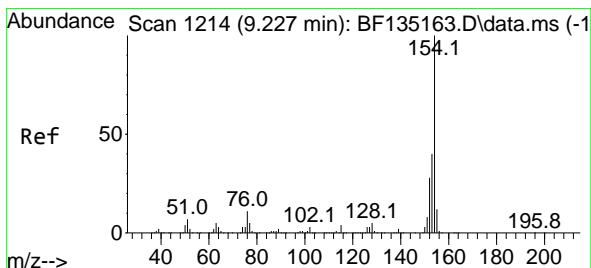
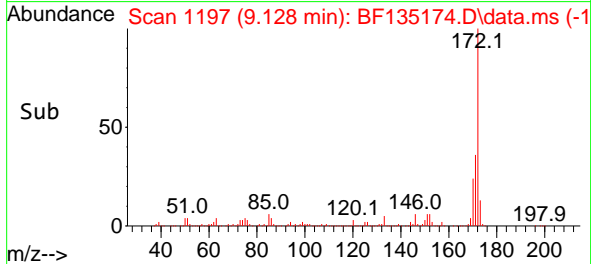
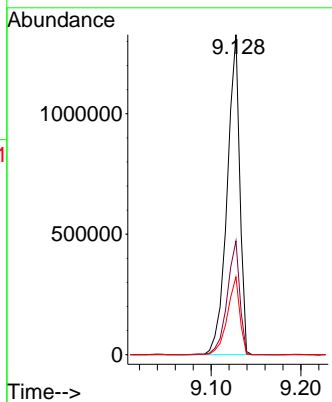


#45
 2-Fluorobiphenyl
 Concen: 85.088 ng
 RT: 9.128 min Scan# 1197
 Delta R.T. 0.000 min
 Lab File: BF135174.D
 Acq: 12 Sep 2023 11:00

Instrument :
 BNA_F
 ClientSampleId :

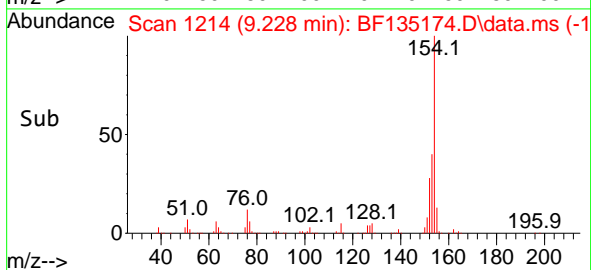
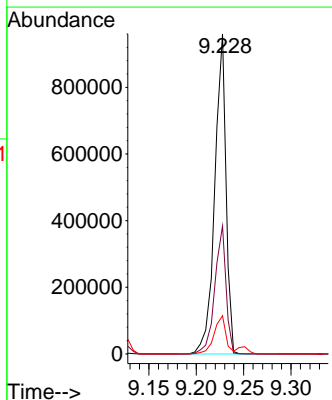
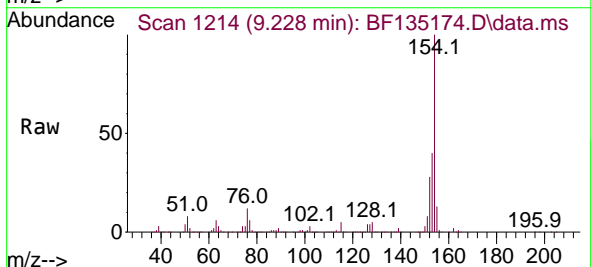


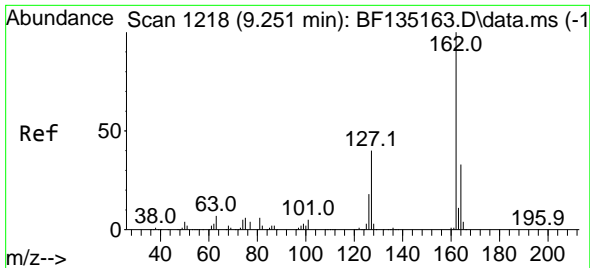
Tgt Ion:172 Resp: 1294619
 Ion Ratio Lower Upper
 172 100
 171 35.5 28.4 42.6
 170 24.3 19.0 28.4



#46
 1,1'-Biphenyl
 Concen: 44.930 ng
 RT: 9.228 min Scan# 1214
 Delta R.T. 0.000 min
 Lab File: BF135174.D
 Acq: 12 Sep 2023 11:00

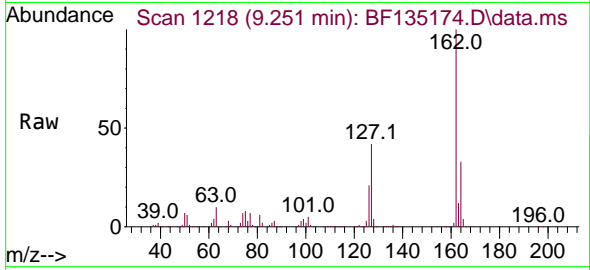
Tgt Ion:154 Resp: 792613
 Ion Ratio Lower Upper
 154 100
 153 40.0 19.6 59.6
 76 11.9 0.0 31.0



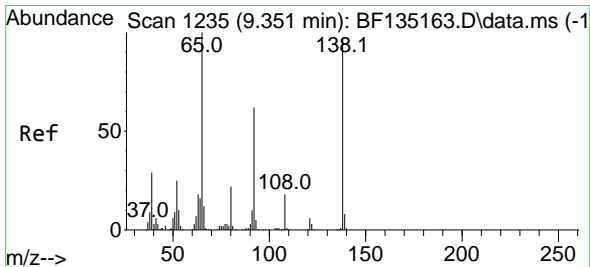
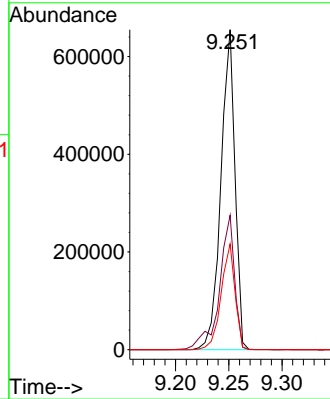
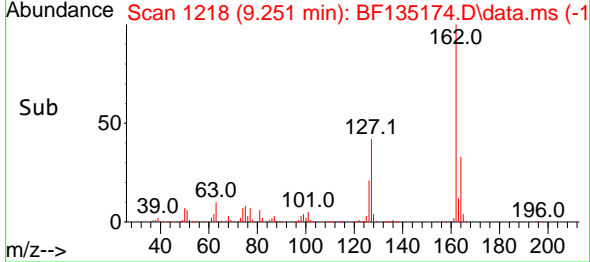


#47
 2-Chloronaphthalene
 Concen: 46.831 ng
 RT: 9.251 min Scan# 11
 Delta R.T. 0.000 min
 Lab File: BF135174.D
 Acq: 12 Sep 2023 11:00

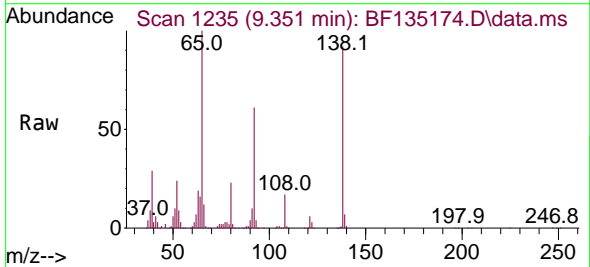
Instrument :
 BNA_F
 ClientSampleId :



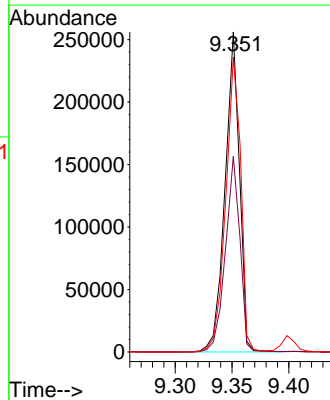
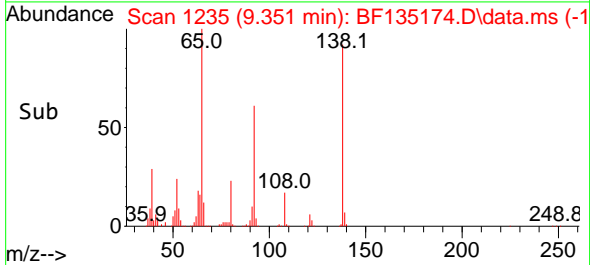
Tgt Ion: 162 Resp: 599418
 Ion Ratio Lower Upper
 162 100
 127 42.0 32.6 48.8
 164 33.0 26.2 39.2

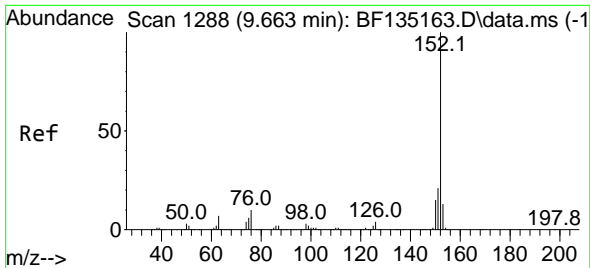


#48
 2-Nitroaniline
 Concen: 45.623 ng
 RT: 9.351 min Scan# 1235
 Delta R.T. 0.000 min
 Lab File: BF135174.D
 Acq: 12 Sep 2023 11:00



Tgt Ion: 65 Resp: 226861
 Ion Ratio Lower Upper
 65 100
 92 61.2 49.4 74.0
 138 92.0 77.4 116.0

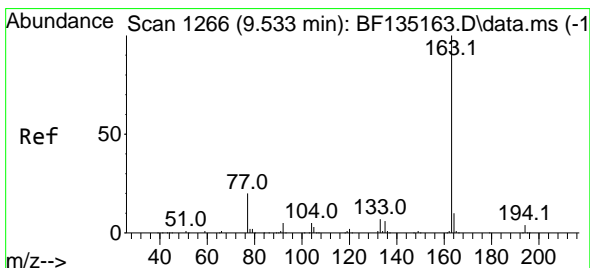
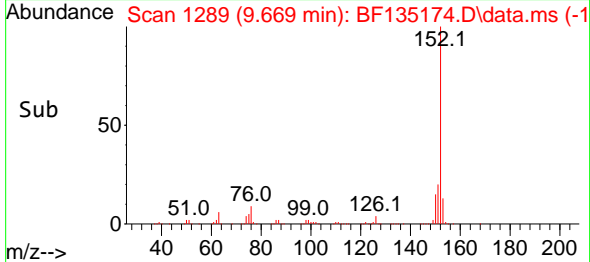
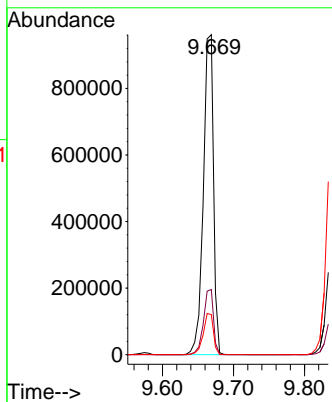
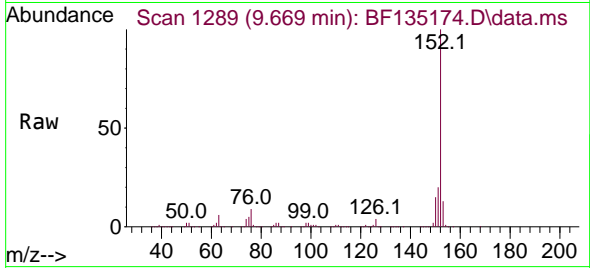




#49
 Acenaphthylene
 Concen: 45.121 ng
 RT: 9.669 min Scan# 11
 Delta R.T. 0.006 min
 Lab File: BF135174.D
 Acq: 12 Sep 2023 11:00

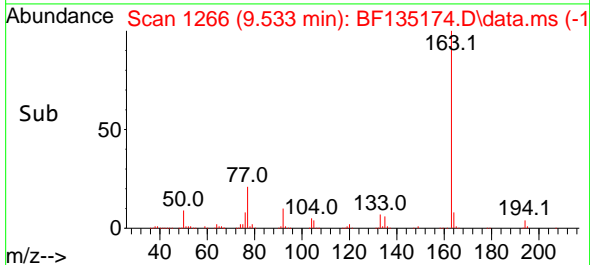
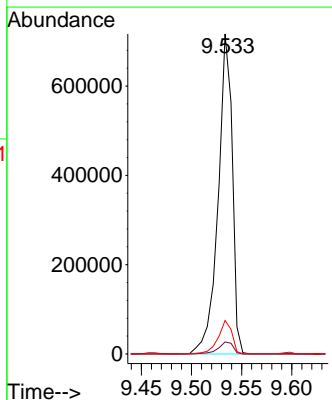
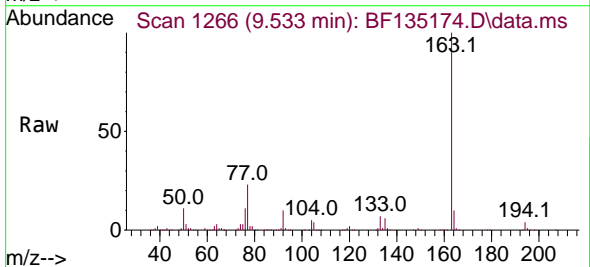
Instrument :
 BNA_F
 ClientSampleId :

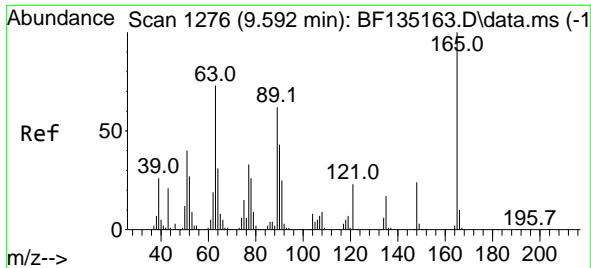
Tgt Ion:152 Resp: 959814
 Ion Ratio Lower Upper
 152 100
 151 20.3 16.4 24.6
 153 12.5 10.4 15.6



#50
 Dimethylphthalate
 Concen: 45.219 ng
 RT: 9.533 min Scan# 1266
 Delta R.T. 0.000 min
 Lab File: BF135174.D
 Acq: 12 Sep 2023 11:00

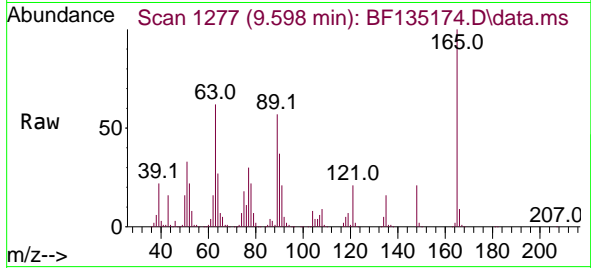
Tgt Ion:163 Resp: 701801
 Ion Ratio Lower Upper
 163 100
 194 3.7 3.1 4.7
 164 10.4 8.1 12.1



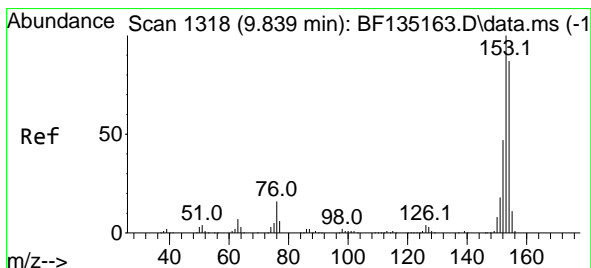
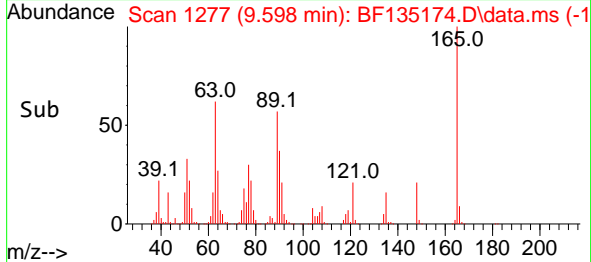
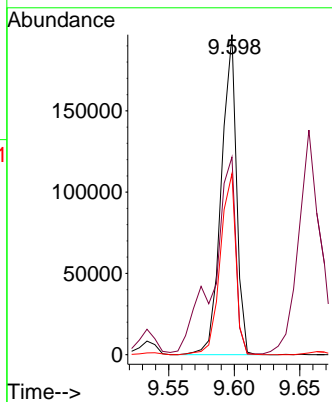


#51
 2,6-Dinitrotoluene
 Concen: 46.602 ng
 RT: 9.598 min Scan# 11
 Delta R.T. 0.006 min
 Lab File: BF135174.D
 Acq: 12 Sep 2023 11:00

Instrument :
 BNA_F
 ClientSampleId :

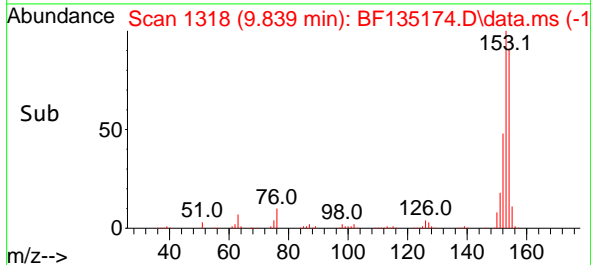
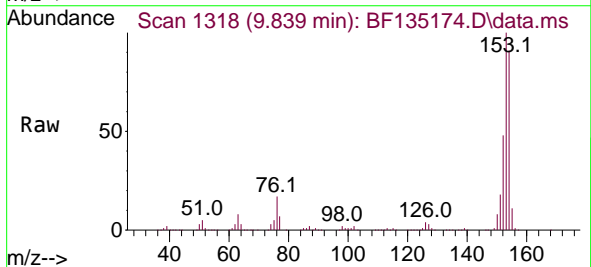
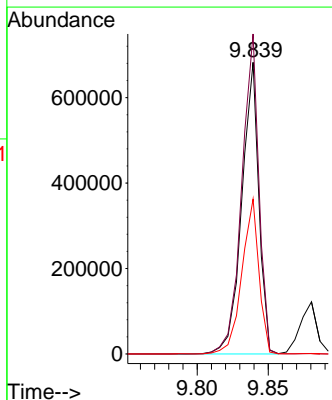


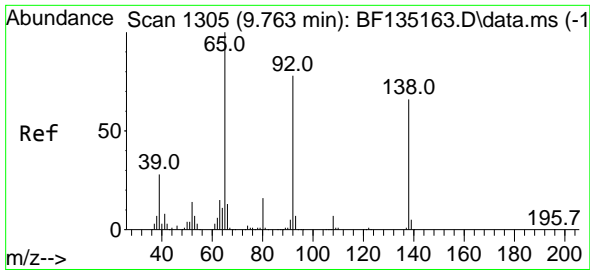
Tgt Ion:165 Resp: 158444
 Ion Ratio Lower Upper
 165 100
 63 61.8 59.4 89.2
 89 56.6 49.8 74.8



#52
 Acenaphthene
 Concen: 45.508 ng
 RT: 9.839 min Scan# 1318
 Delta R.T. 0.000 min
 Lab File: BF135174.D
 Acq: 12 Sep 2023 11:00

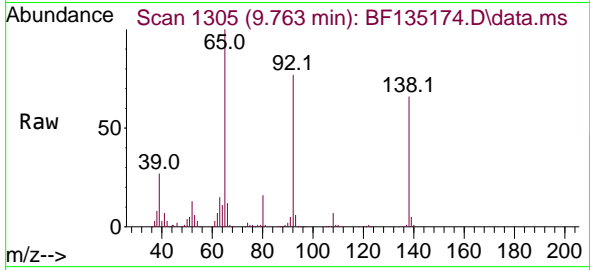
Tgt Ion:154 Resp: 571866
 Ion Ratio Lower Upper
 154 100
 153 109.7 92.1 138.1
 152 53.1 43.1 64.7



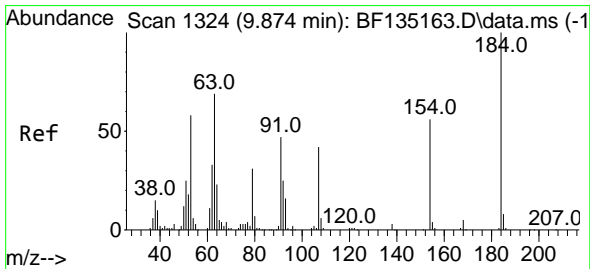
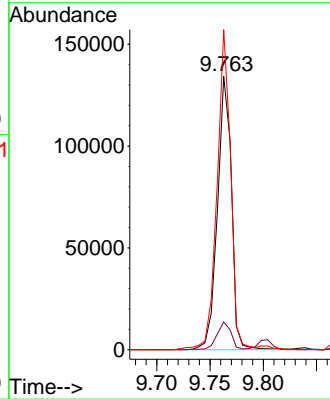
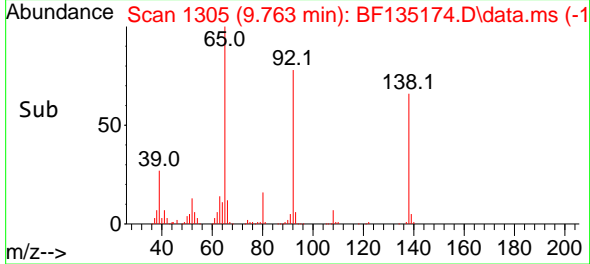


#53
 3-Nitroaniline
 Concen: 30.572 ng
 RT: 9.763 min Scan# 11
 Delta R.T. 0.000 min
 Lab File: BF135174.D
 Acq: 12 Sep 2023 11:00

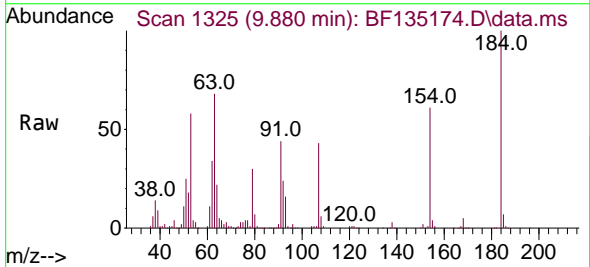
Instrument :
 BNA_F
 ClientSampleId :



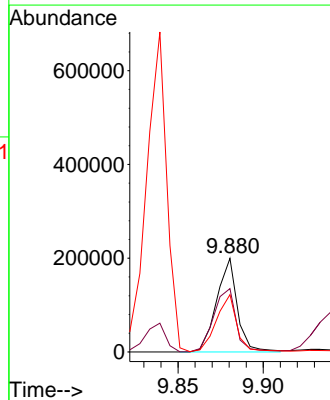
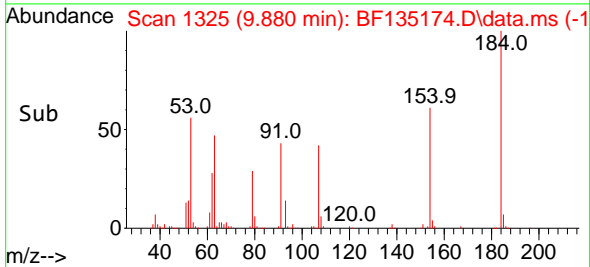
Tgt Ion:138 Resp: 122014
 Ion Ratio Lower Upper
 138 100
 108 10.1 8.5 12.7
 92 117.1 95.4 143.0

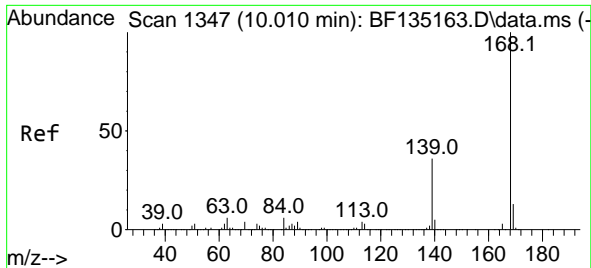


#54
 2,4-Dinitrophenol
 Concen: 87.255 ng
 RT: 9.880 min Scan# 1325
 Delta R.T. 0.006 min
 Lab File: BF135174.D
 Acq: 12 Sep 2023 11:00



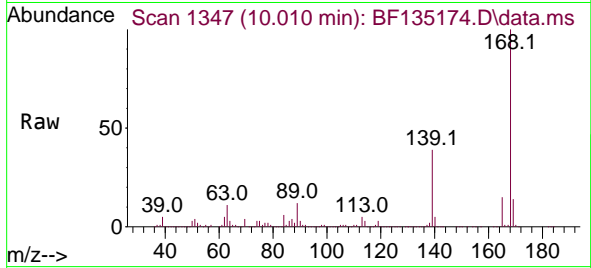
Tgt Ion:184 Resp: 169601
 Ion Ratio Lower Upper
 184 100
 63 67.6 55.1 82.7
 154 61.1 48.4 72.6



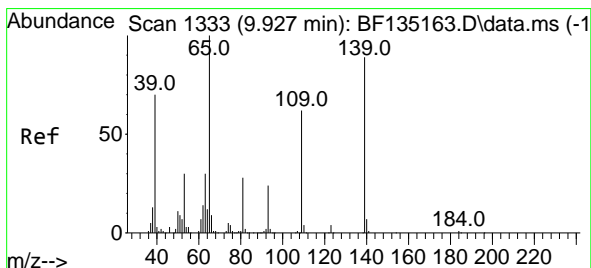
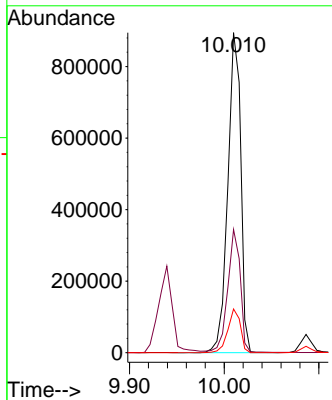
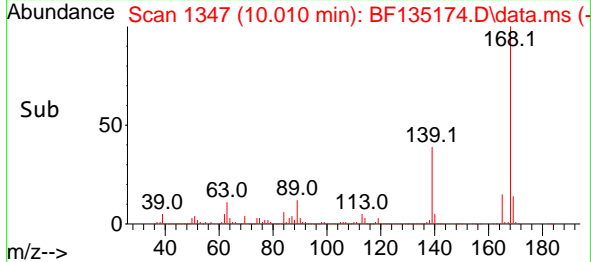


#55
 Dibenzenofuran
 Concen: 44.217 ng
 RT: 10.010 min Scan# 11
 Delta R.T. 0.000 min
 Lab File: BF135174.D
 Acq: 12 Sep 2023 11:00

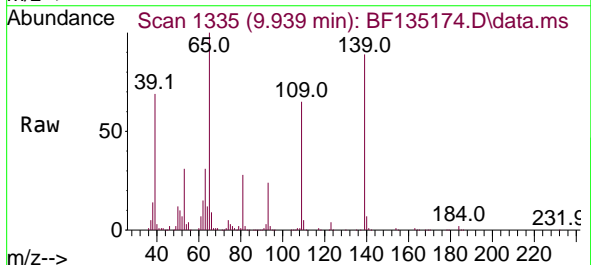
Instrument :
 BNA_F
 ClientSampleId :



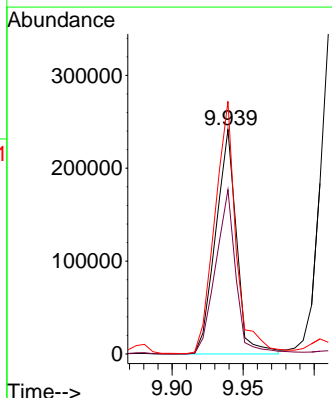
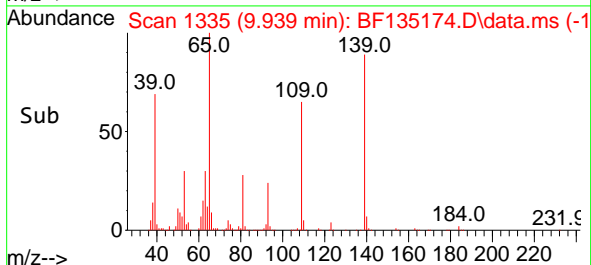
Tgt Ion:168 Resp: 847904
 Ion Ratio Lower Upper
 168 100
 139 38.5 29.0 43.6
 169 13.6 10.4 15.6

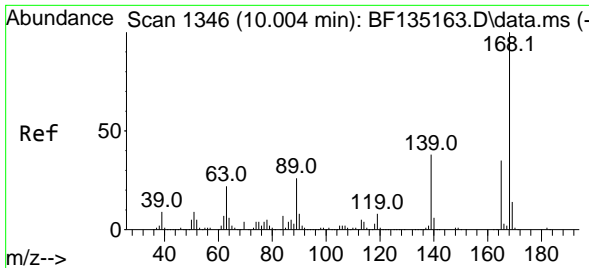


#56
 4-Nitrophenol
 Concen: 97.284 ng
 RT: 9.939 min Scan# 1335
 Delta R.T. 0.012 min
 Lab File: BF135174.D
 Acq: 12 Sep 2023 11:00



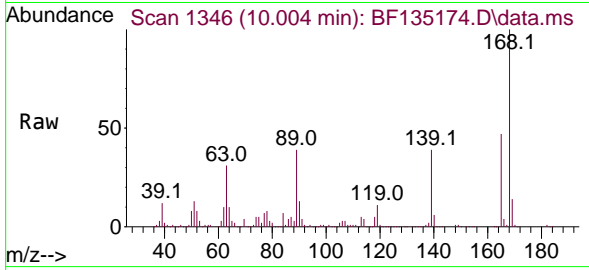
Tgt Ion:139 Resp: 246759
 Ion Ratio Lower Upper
 139 100
 109 73.1 49.8 89.8
 65 112.5 92.7 132.7



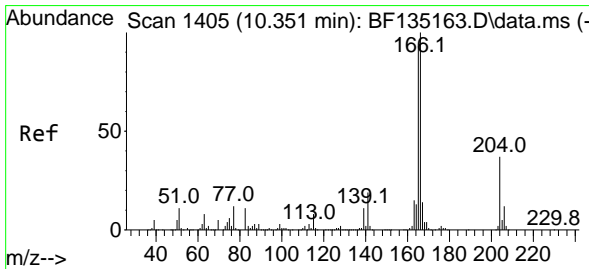
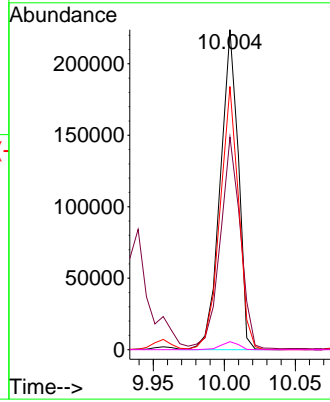
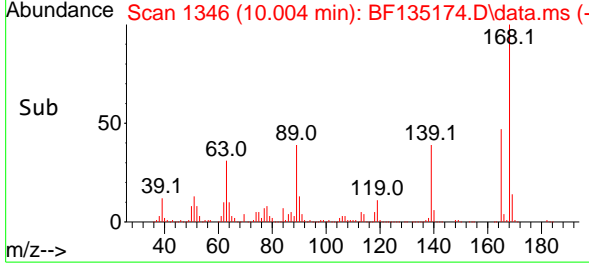


#57
 2,4-Dinitrotoluene
 Concen: 46.314 ng
 RT: 10.004 min Scan# 11
 Delta R.T. 0.000 min
 Lab File: BF135174.D
 Acq: 12 Sep 2023 11:00

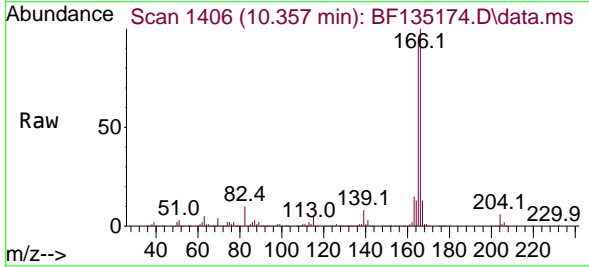
Instrument :
 BNA_F
 ClientSampleId :



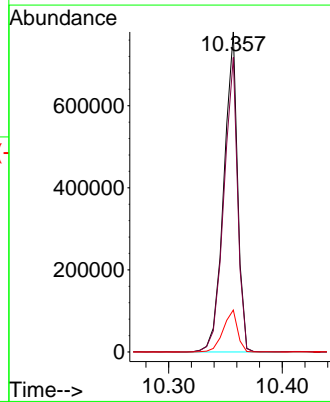
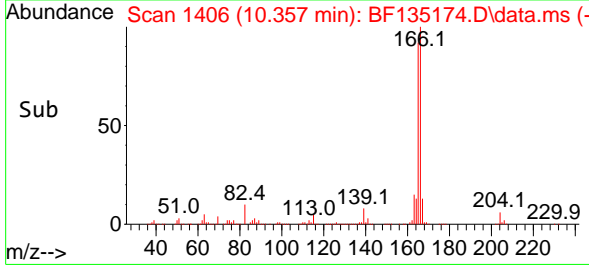
Tgt Ion:165 Resp: 197133
 Ion Ratio Lower Upper
 165 100
 63 66.5 50.1 75.1
 89 82.3 59.3 88.9
 182 2.5 2.3 3.5

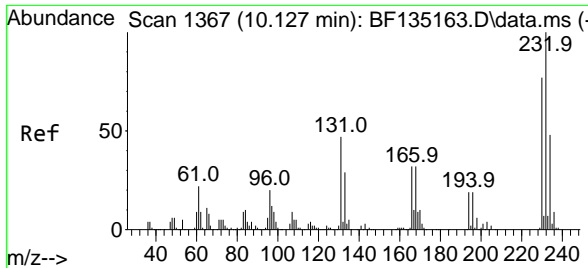


#58
 Fluorene
 Concen: 44.733 ng
 RT: 10.357 min Scan# 1406
 Delta R.T. 0.006 min
 Lab File: BF135174.D
 Acq: 12 Sep 2023 11:00



Tgt Ion:166 Resp: 659440
 Ion Ratio Lower Upper
 166 100
 165 92.0 74.3 111.5
 167 13.1 10.9 16.3

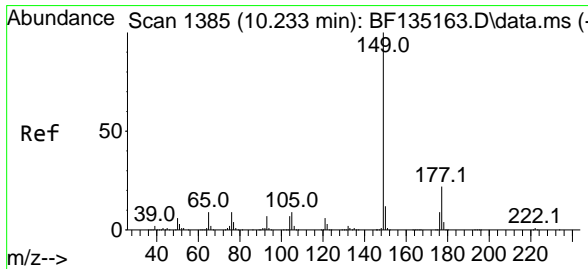
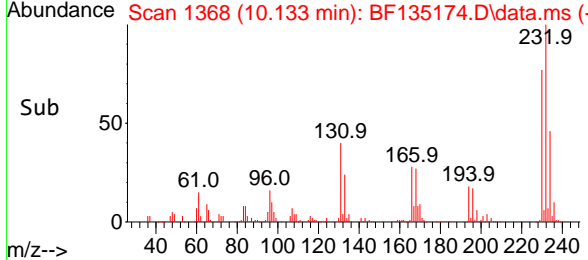
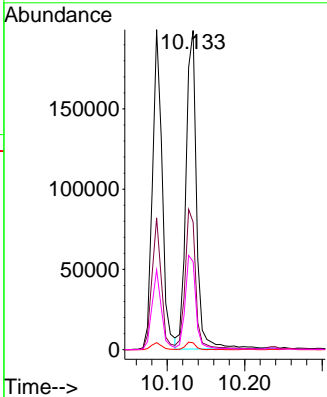
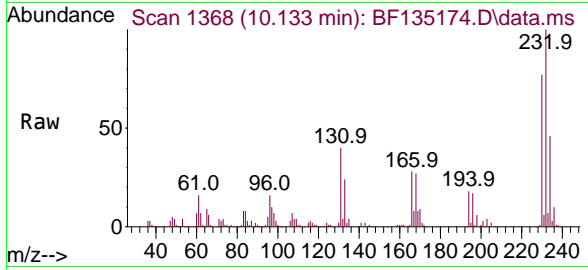




#59
 2,3,4,6-Tetrachlorophenol
 Concen: 48.809 ng
 RT: 10.133 min Scan# 11
 Delta R.T. 0.006 min
 Lab File: BF135174.D
 Acq: 12 Sep 2023 11:00

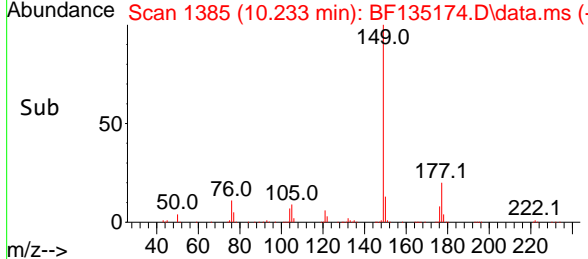
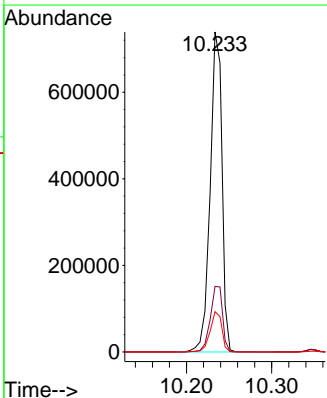
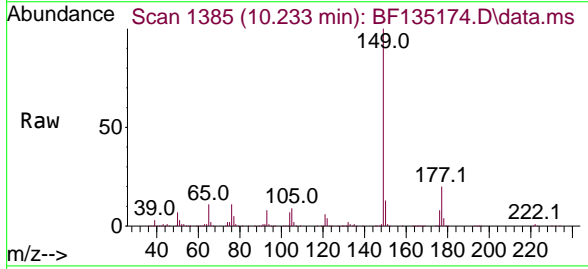
Instrument :
 BNA_F
 ClientSampleId :

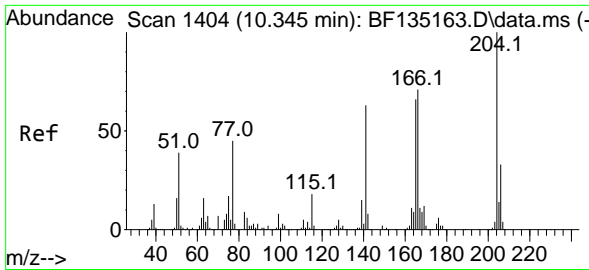
Tgt Ion:232 Resp: 188270
 Ion Ratio Lower Upper
 232 100
 131 44.7 35.4 53.2
 130 2.3 1.8 2.8
 166 29.7 24.3 36.5



#60
 Diethylphthalate
 Concen: 45.752 ng
 RT: 10.233 min Scan# 1385
 Delta R.T. 0.000 min
 Lab File: BF135174.D
 Acq: 12 Sep 2023 11:00

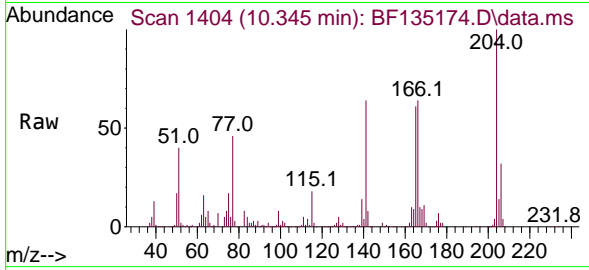
Tgt Ion:149 Resp: 712623
 Ion Ratio Lower Upper
 149 100
 177 20.5 17.8 26.6
 150 12.6 10.0 15.0



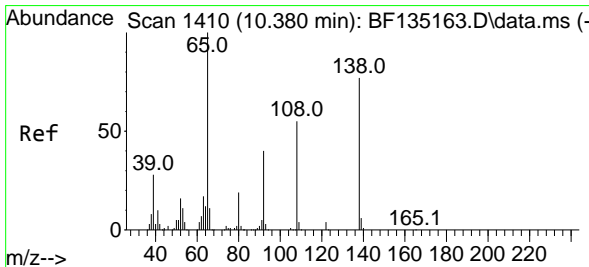
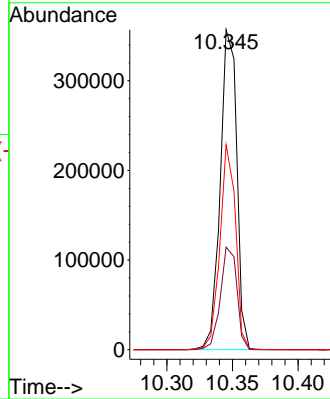
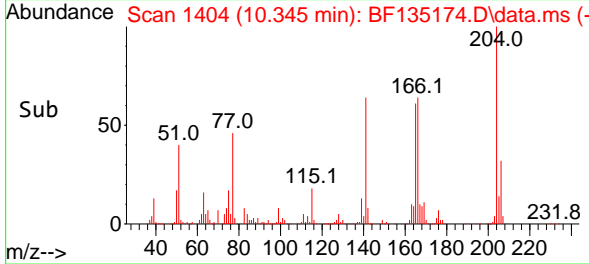


#61
 4-Chlorophenyl-phenylether
 Concen: 44.130 ng
 RT: 10.345 min Scan# 1410
 Delta R.T. 0.000 min
 Lab File: BF135174.D
 Acq: 12 Sep 2023 11:00

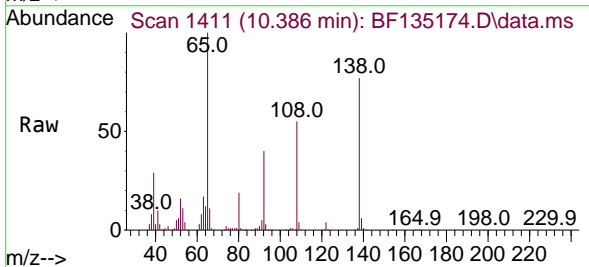
Instrument :
 BNA_F
 ClientSampleId :



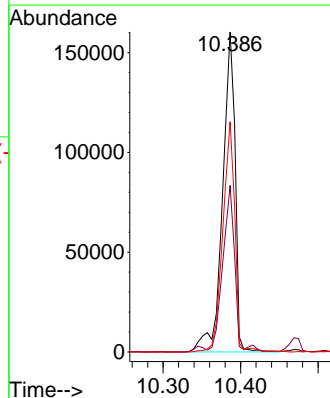
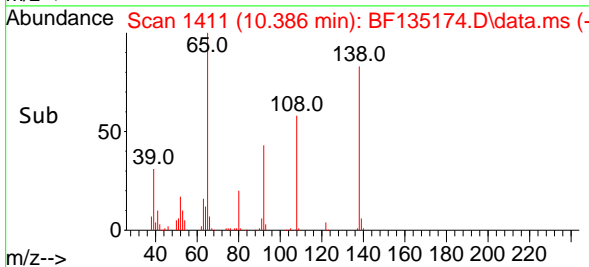
Tgt Ion:204 Resp: 312503
 Ion Ratio Lower Upper
 204 100
 206 32.0 26.7 40.1
 141 64.1 50.6 75.8

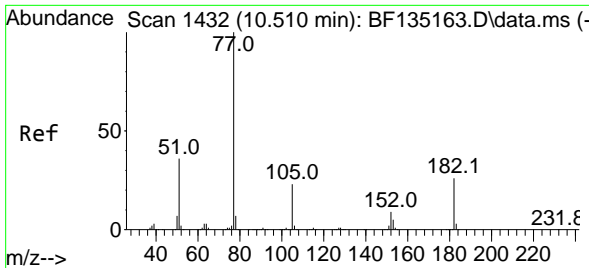


#62
 4-Nitroaniline
 Concen: 47.076 ng
 RT: 10.386 min Scan# 1411
 Delta R.T. 0.006 min
 Lab File: BF135174.D
 Acq: 12 Sep 2023 11:00



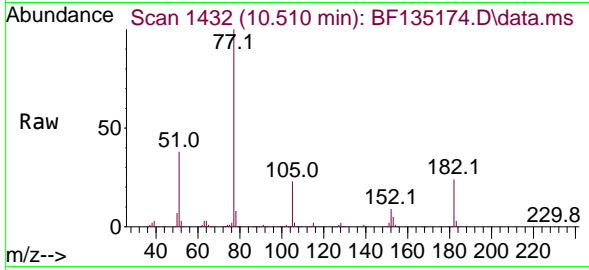
Tgt Ion:138 Resp: 180597
 Ion Ratio Lower Upper
 138 100
 92 52.0 31.8 71.8
 108 71.9 52.0 92.0





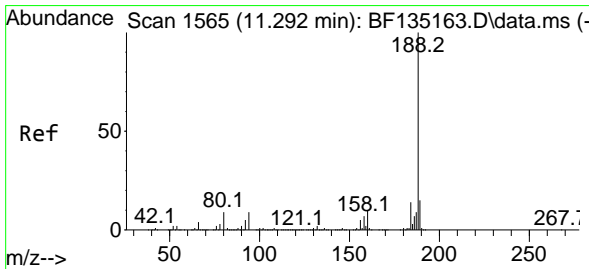
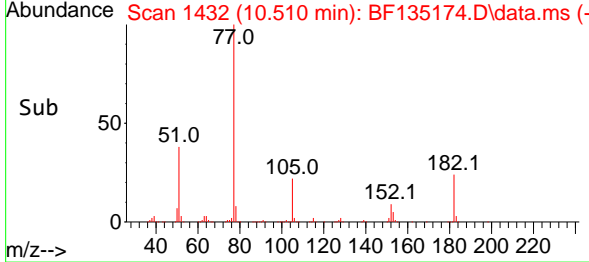
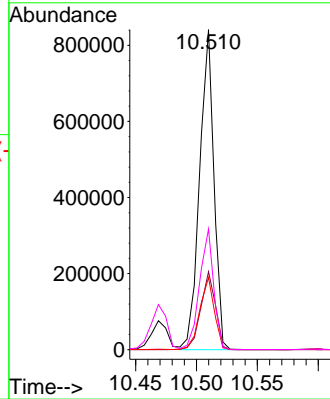
#63
 Azobenzene
 Concen: 45.327 ng
 RT: 10.510 min Scan# 14
 Delta R.T. 0.000 min
 Lab File: BF135174.D
 Acq: 12 Sep 2023 11:00

Instrument :
 BNA_F
 Client Sampled :



Tgt Ion: 77 Resp: 690961

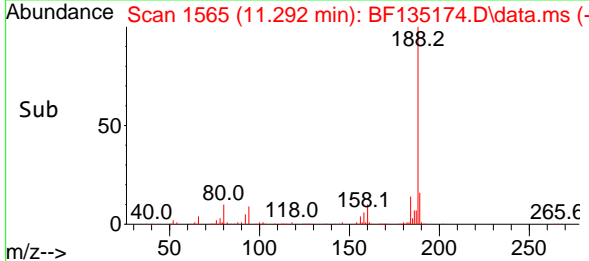
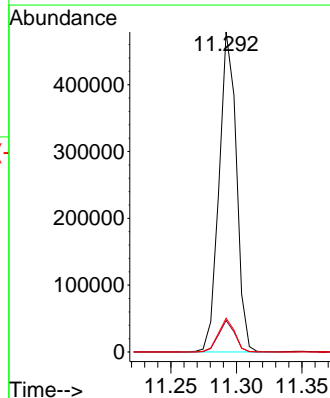
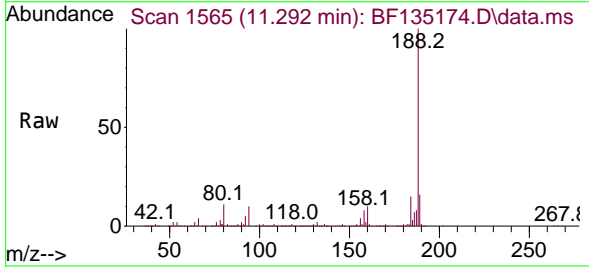
Ion	Ratio	Lower	Upper
77	100		
182	24.3	6.4	46.4
105	22.5	3.1	43.1
51	37.7	16.1	56.1

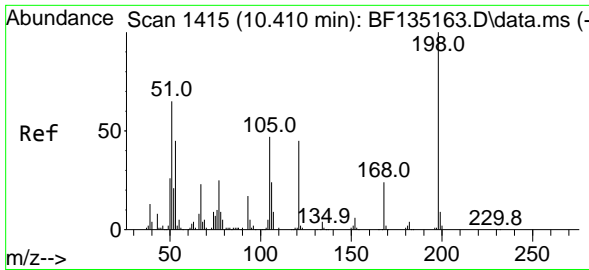


#64
 Phenanthrene-d10
 Concen: 20.000 ng
 RT: 11.292 min Scan# 1565
 Delta R.T. 0.000 min
 Lab File: BF135174.D
 Acq: 12 Sep 2023 11:00

Tgt Ion: 188 Resp: 439496

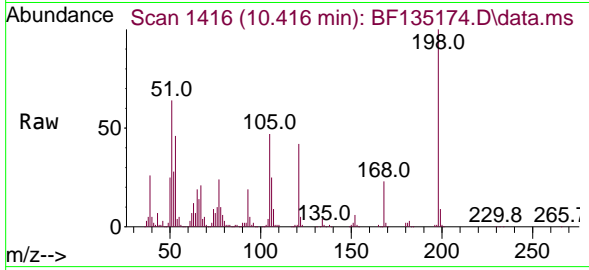
Ion	Ratio	Lower	Upper
188	100		
94	9.9	7.0	10.6
80	10.5	7.5	11.3



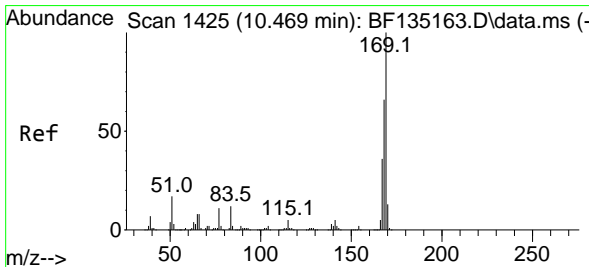
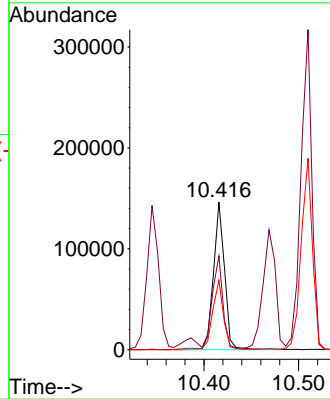
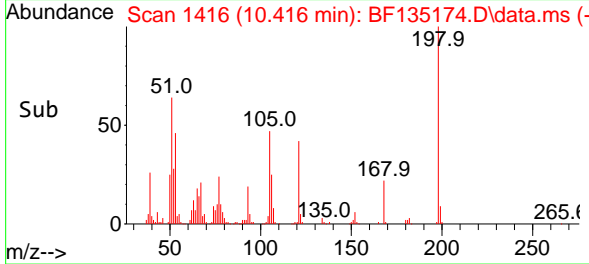


#65
 4,6-Dinitro-2-methylphenol
 Concen: 50.472 ng
 RT: 10.416 min Scan# 1416
 Delta R.T. 0.006 min
 Lab File: BF135174.D
 Acq: 12 Sep 2023 11:00

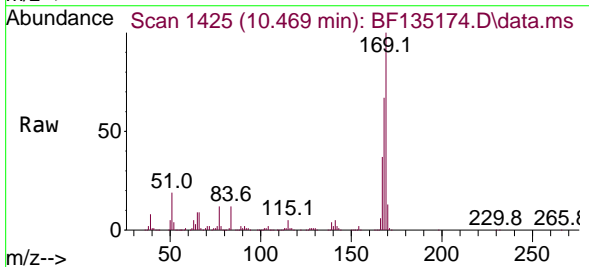
Instrument :
 BNA_F
 ClientSampleId :



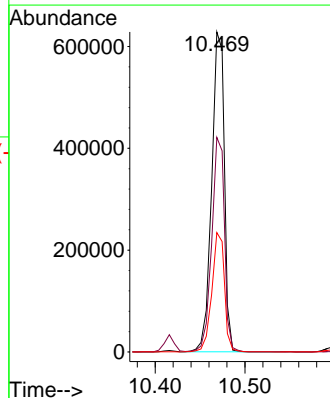
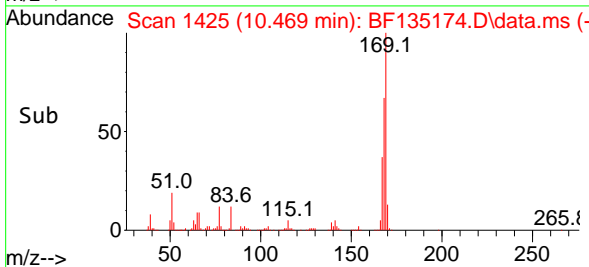
Tgt Ion:198 Resp: 117818
 Ion Ratio Lower Upper
 198 100
 51 63.6 47.7 87.7
 105 47.1 27.4 67.4

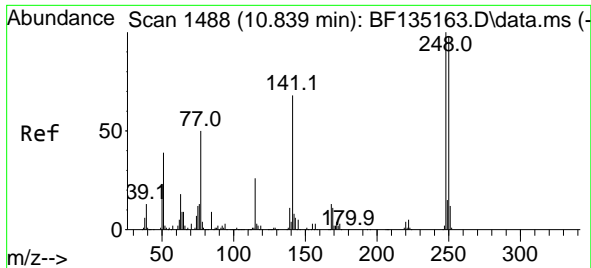


#66
 n-Nitrosodiphenylamine
 Concen: 46.262 ng
 RT: 10.469 min Scan# 1425
 Delta R.T. 0.000 min
 Lab File: BF135174.D
 Acq: 12 Sep 2023 11:00



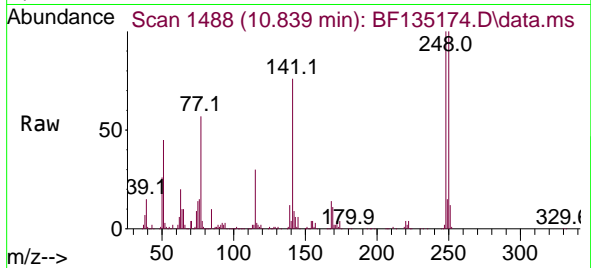
Tgt Ion:169 Resp: 615544
 Ion Ratio Lower Upper
 169 100
 168 67.0 52.8 79.2
 167 37.3 29.0 43.6



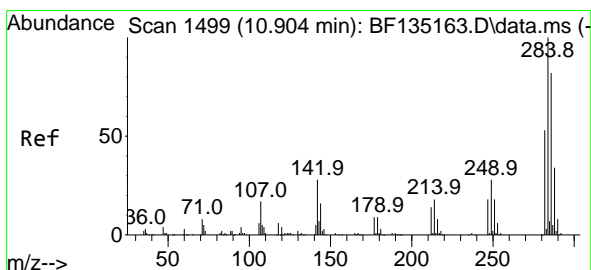
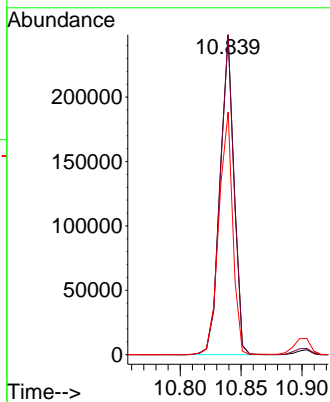
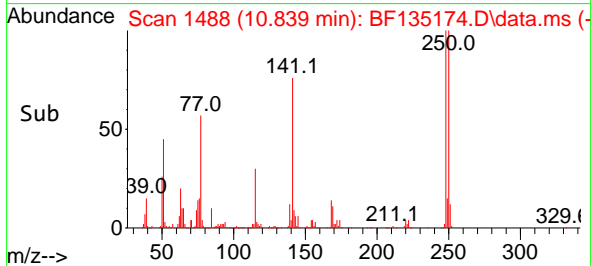


#67
 4-Bromophenyl-phenylether
 Concen: 45.491 ng
 RT: 10.839 min Scan# 1488
 Delta R.T. 0.000 min
 Lab File: BF135174.D
 Acq: 12 Sep 2023 11:00

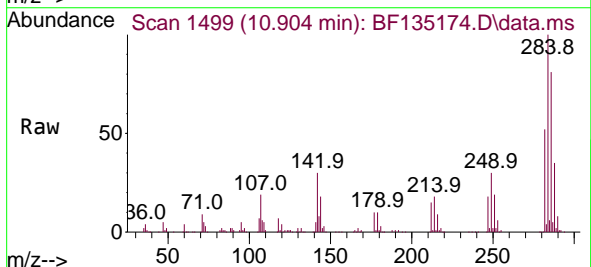
Instrument :
 BNA_F
 ClientSampleId :



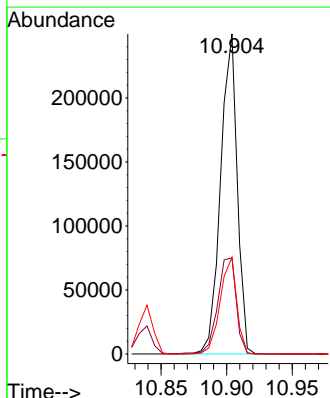
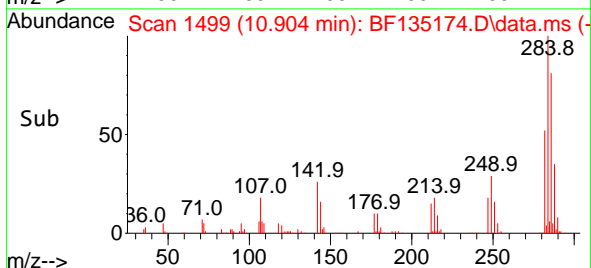
Tgt Ion:248 Resp: 198847
 Ion Ratio Lower Upper
 248 100
 250 100.0 78.6 117.8
 141 75.8 54.2 81.2

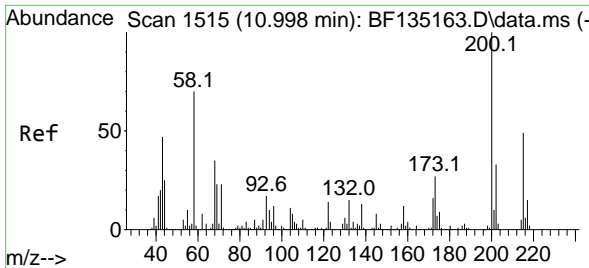


#68
 Hexachlorobenzene
 Concen: 49.357 ng
 RT: 10.904 min Scan# 1499
 Delta R.T. 0.000 min
 Lab File: BF135174.D
 Acq: 12 Sep 2023 11:00



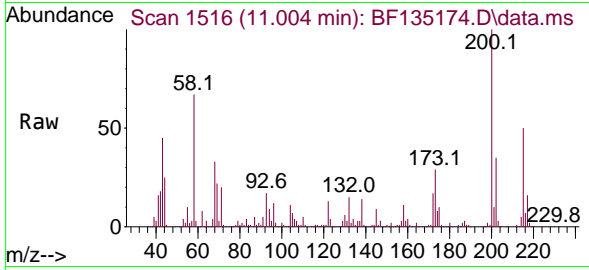
Tgt Ion:284 Resp: 219795
 Ion Ratio Lower Upper
 284 100
 142 30.0 22.2 33.4
 249 30.2 22.5 33.7



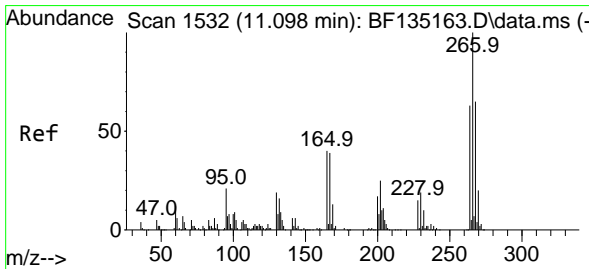
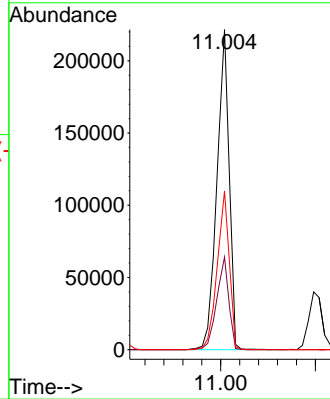
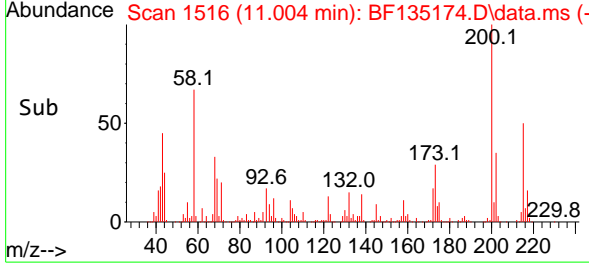


#69
 Atrazine
 Concen: 55.868 ng
 RT: 11.004 min Scan# 11
 Delta R.T. 0.006 min
 Lab File: BF135174.D
 Acq: 12 Sep 2023 11:00

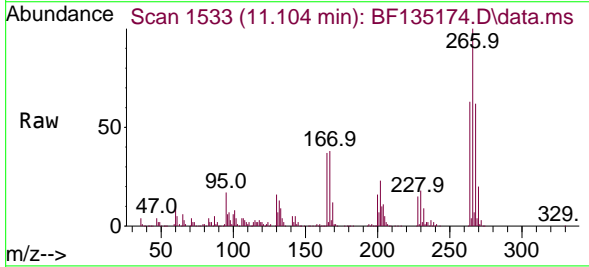
Instrument :
 BNA_F
 ClientSampleId :



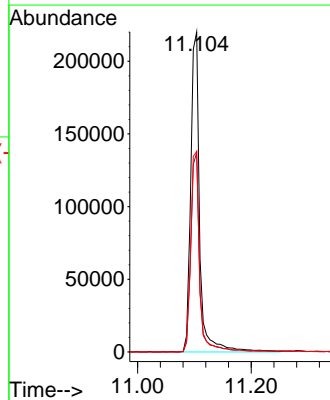
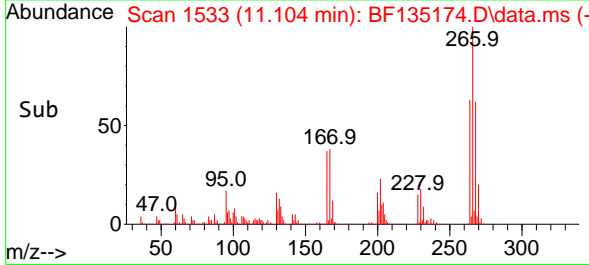
Tgt Ion:200 Resp: 200016
 Ion Ratio Lower Upper
 200 100
 173 29.0 7.4 47.4
 215 49.6 28.6 68.6

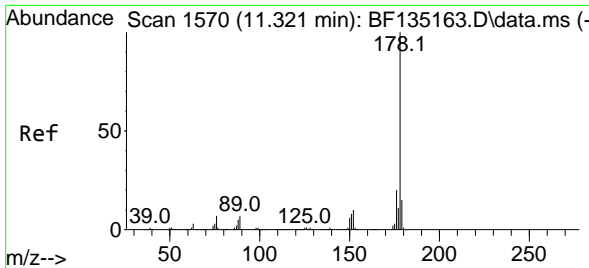


#70
 Pentachlorophenol
 Concen: 90.219 ng
 RT: 11.104 min Scan# 1533
 Delta R.T. 0.006 min
 Lab File: BF135174.D
 Acq: 12 Sep 2023 11:00



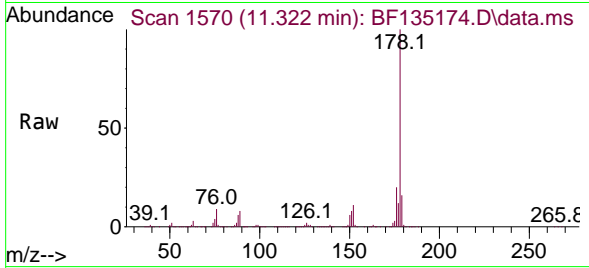
Tgt Ion:266 Resp: 240373
 Ion Ratio Lower Upper
 266 100
 268 62.3 52.1 78.1
 264 62.6 50.8 76.2



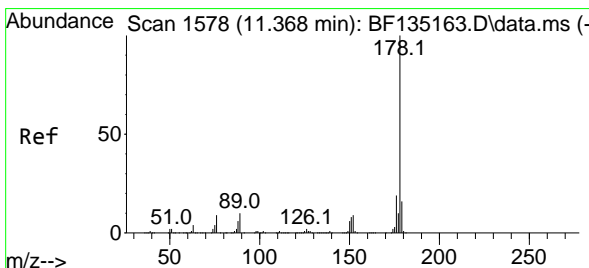
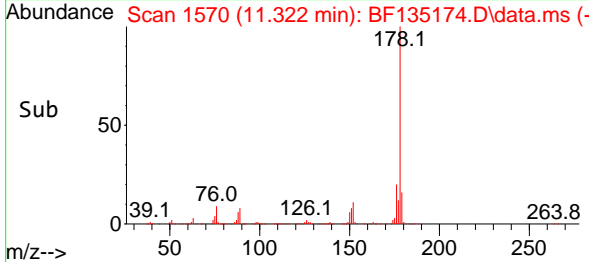
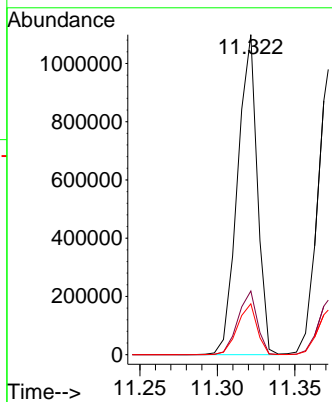


#71
 Phenanthrene
 Concen: 46.734 ng
 RT: 11.322 min Scan# 1570
 Delta R.T. 0.000 min
 Lab File: BF135174.D
 Acq: 12 Sep 2023 11:00

Instrument : BNA_F
 ClientSampleId :

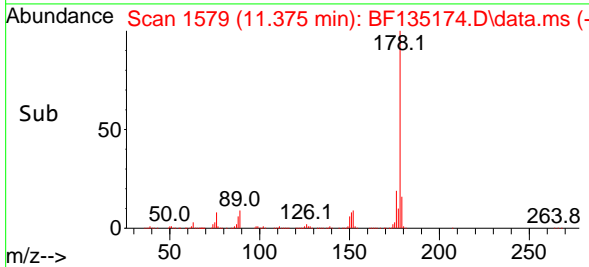
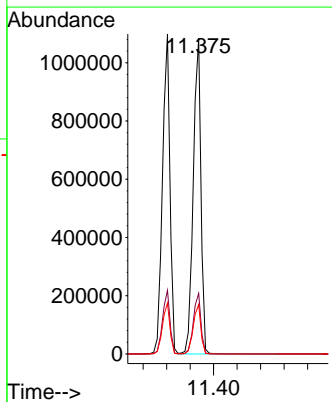
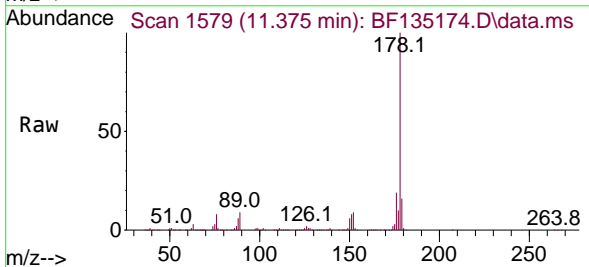


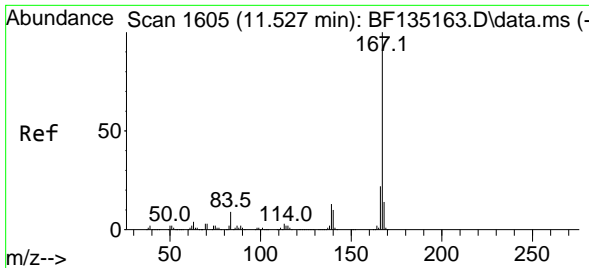
Tgt Ion:178 Resp: 971427
 Ion Ratio Lower Upper
 178 100
 176 19.9 15.6 23.4
 179 15.9 12.0 18.0



#72
 Anthracene
 Concen: 46.098 ng
 RT: 11.375 min Scan# 1579
 Delta R.T. 0.006 min
 Lab File: BF135174.D
 Acq: 12 Sep 2023 11:00

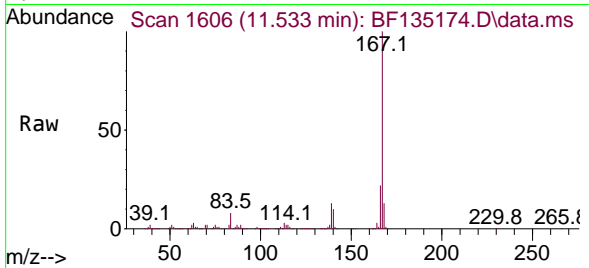
Tgt Ion:178 Resp: 984936
 Ion Ratio Lower Upper
 178 100
 176 19.2 15.4 23.2
 179 15.6 12.6 19.0



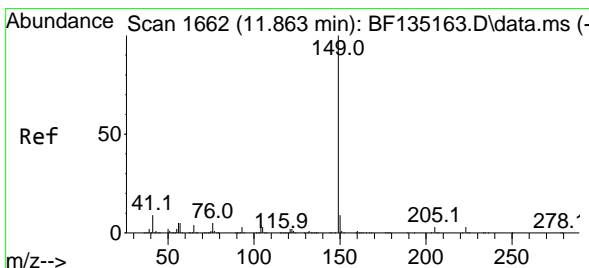
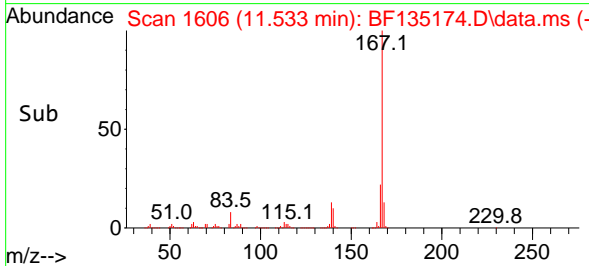
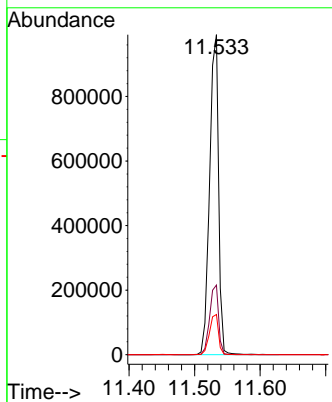


#73
 Carbazole
 Concen: 48.538 ng
 RT: 11.533 min Scan# 1606
 Delta R.T. 0.006 min
 Lab File: BF135174.D
 Acq: 12 Sep 2023 11:00

Instrument : BNA_F
 Client Sampled :

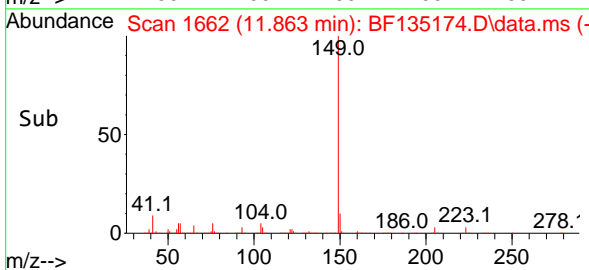
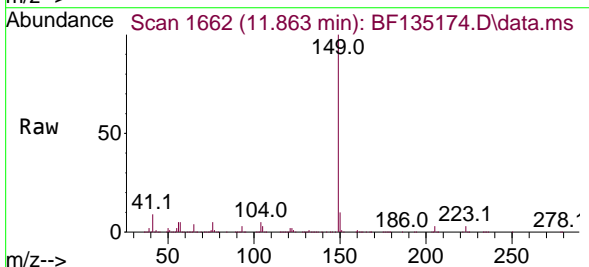
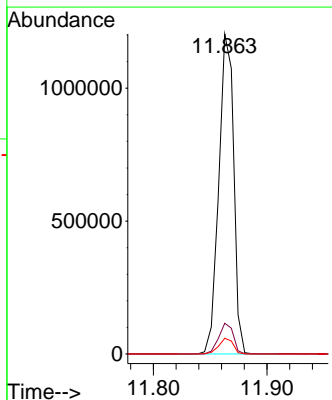


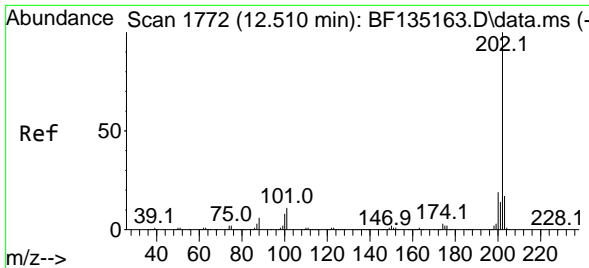
Tgt Ion:167 Resp: 944072
 Ion Ratio Lower Upper
 167 100
 166 21.8 17.4 26.0
 139 12.6 10.6 15.8



#74
 Di-n-butylphthalate
 Concen: 48.061 ng
 RT: 11.863 min Scan# 1662
 Delta R.T. 0.000 min
 Lab File: BF135174.D
 Acq: 12 Sep 2023 11:00

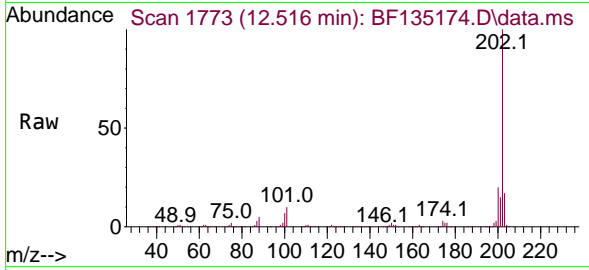
Tgt Ion:149 Resp: 1101494
 Ion Ratio Lower Upper
 149 100
 150 9.6 7.4 11.0
 104 4.9 3.6 5.4



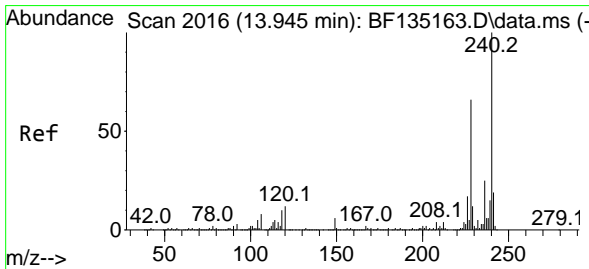
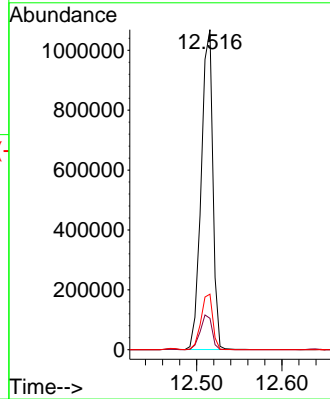
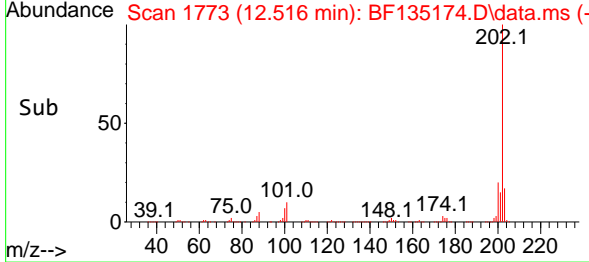


#75
 Fluoranthene
 Concen: 46.681 ng
 RT: 12.516 min Scan# 11
 Delta R.T. 0.006 min
 Lab File: BF135174.D
 Acq: 12 Sep 2023 11:00

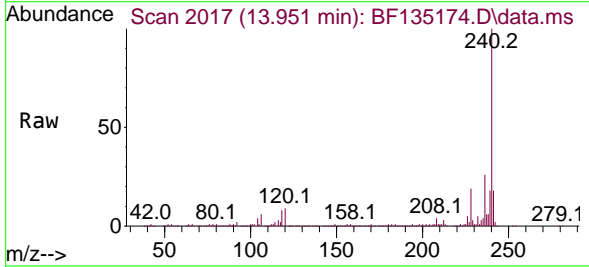
Instrument :
 BNA_F
 ClientSampleId :



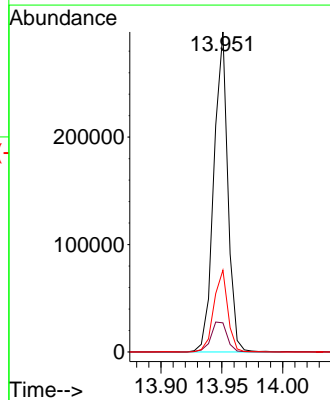
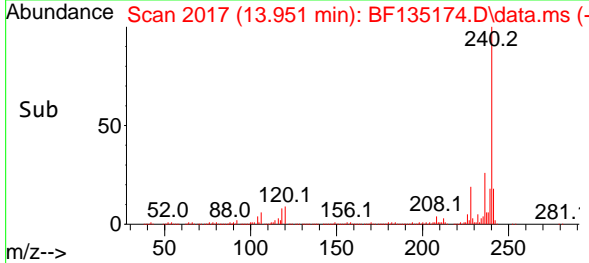
Tgt Ion:202 Resp: 1011064
 Ion Ratio Lower Upper
 202 100
 101 9.8 0.0 31.3
 203 17.4 0.0 37.4

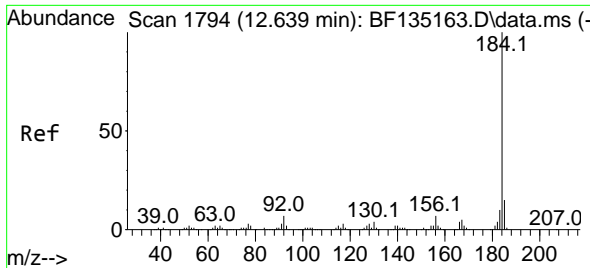


#76
 Chrysene-d12
 Concen: 20.000 ng
 RT: 13.951 min Scan# 2017
 Delta R.T. 0.006 min
 Lab File: BF135174.D
 Acq: 12 Sep 2023 11:00



Tgt Ion:240 Resp: 237538
 Ion Ratio Lower Upper
 240 100
 120 9.1 9.4 14.2#
 236 25.6 19.8 29.8



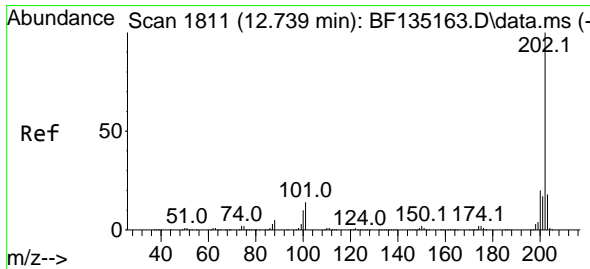
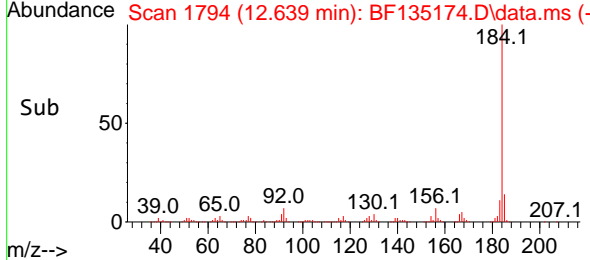
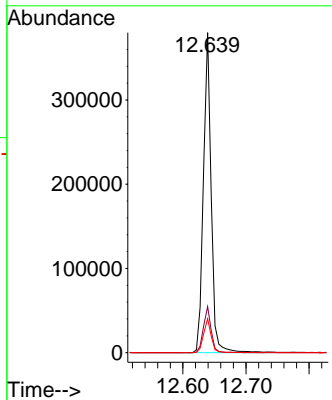
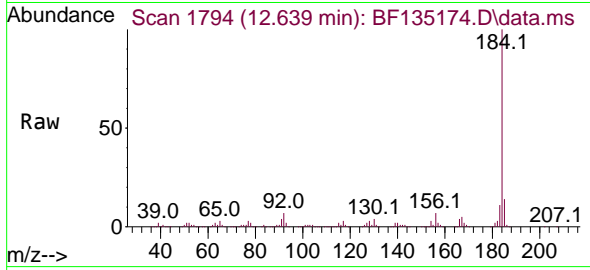


#77
 Benzidine
 Concen: 66.905 ng
 RT: 12.639 min Scan# 11
 Delta R.T. 0.000 min
 Lab File: BF135174.D
 Acq: 12 Sep 2023 11:00

Instrument :
 BNA_F
 ClientSampleId :

Tgt Ion:184 Resp: 325585

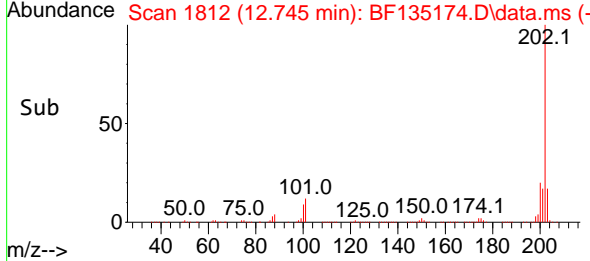
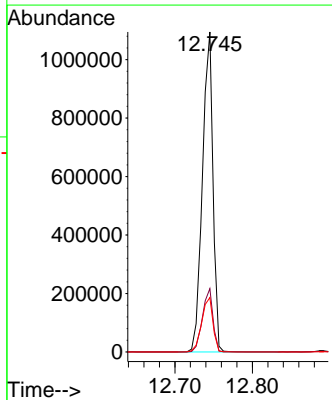
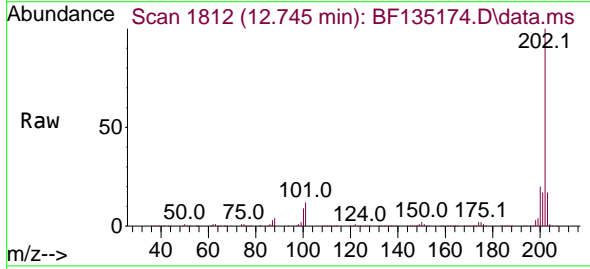
Ion	Ratio	Lower	Upper
184	100		
185	14.4	11.7	17.5
183	10.6	8.2	12.4

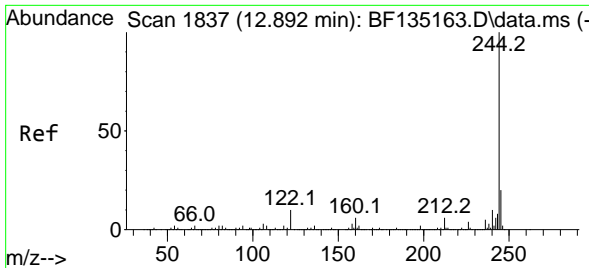


#78
 Pyrene
 Concen: 45.677 ng
 RT: 12.745 min Scan# 1812
 Delta R.T. 0.006 min
 Lab File: BF135174.D
 Acq: 12 Sep 2023 11:00

Tgt Ion:202 Resp: 1033014

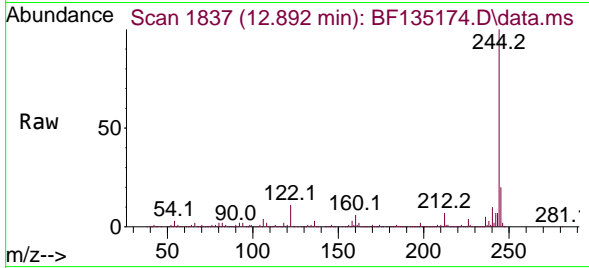
Ion	Ratio	Lower	Upper
202	100		
200	19.8	16.2	24.2
203	17.0	14.2	21.4



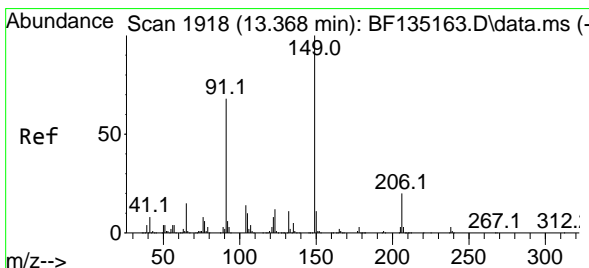
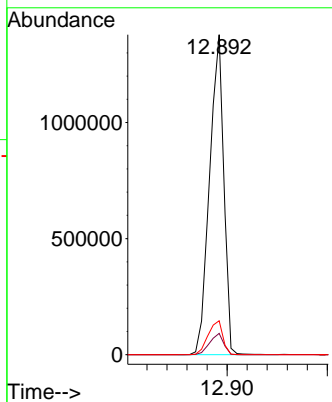
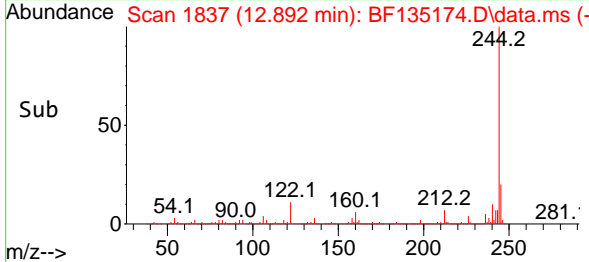


#79
 Terphenyl-d14
 Concen: 88.467 ng
 RT: 12.892 min Scan# 11
 Delta R.T. 0.000 min
 Lab File: BF135174.D
 Acq: 12 Sep 2023 11:00

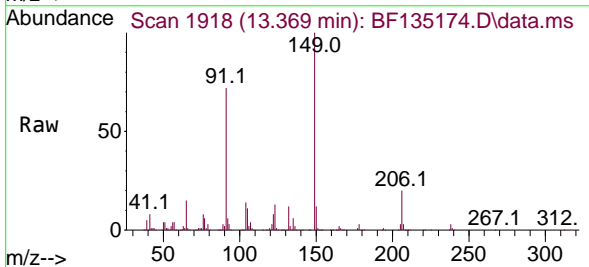
Instrument :
 BNA_F
 ClientSampleId :



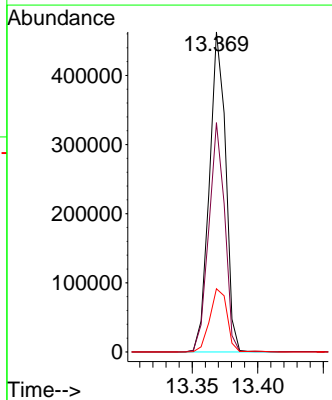
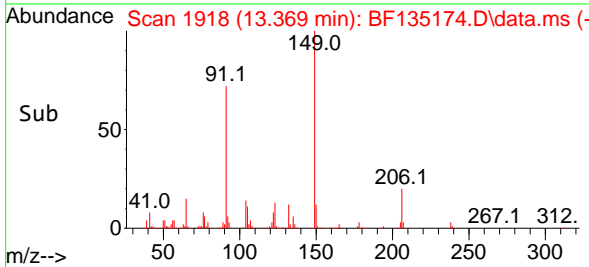
Tgt Ion:244 Resp: 1355585
 Ion Ratio Lower Upper
 244 100
 212 6.6 5.1 7.7
 122 10.6 7.9 11.9

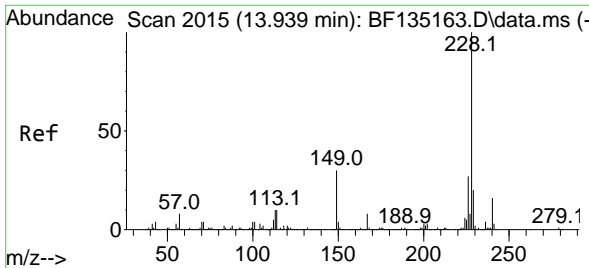


#80
 Butylbenzylphthalate
 Concen: 50.330 ng
 RT: 13.369 min Scan# 1918
 Delta R.T. 0.000 min
 Lab File: BF135174.D
 Acq: 12 Sep 2023 11:00



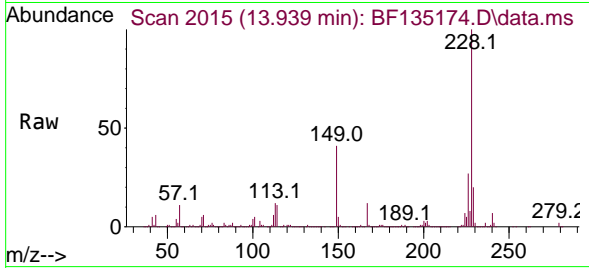
Tgt Ion:149 Resp: 400753
 Ion Ratio Lower Upper
 149 100
 91 71.6 54.7 82.1
 206 19.8 16.3 24.5



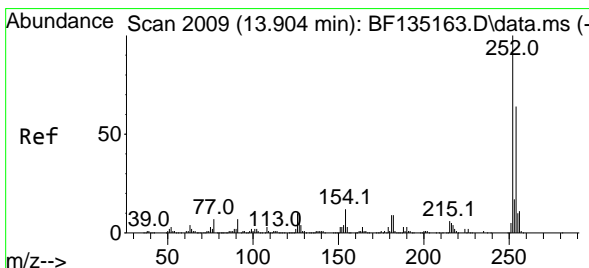
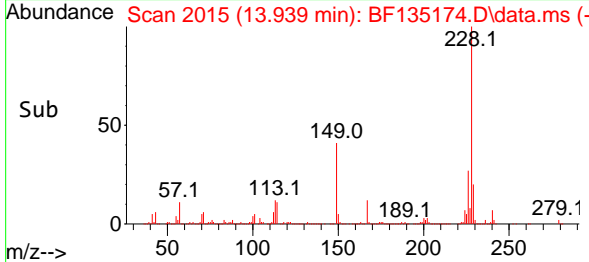
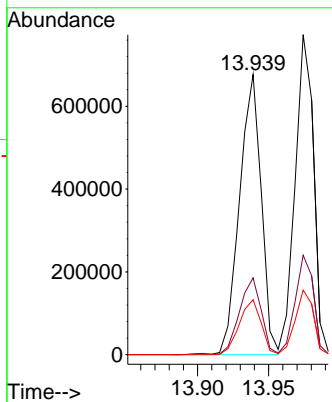


#81
 Benzo(a)anthracene
 Concen: 46.797 ng
 RT: 13.939 min Scan# 2015
 Delta R.T. 0.000 min
 Lab File: BF135174.D
 Acq: 12 Sep 2023 11:00

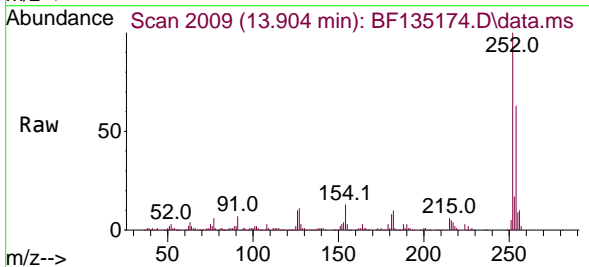
Instrument : BNA_F
 ClientSampleId :



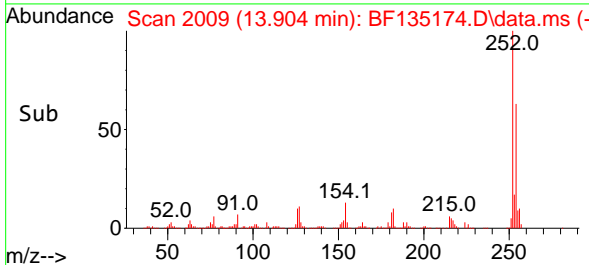
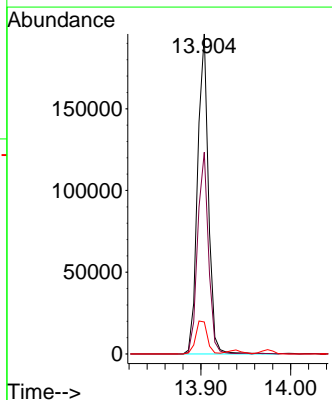
Tgt Ion:228 Resp: 717788
 Ion Ratio Lower Upper
 228 100
 226 27.4 21.7 32.5
 229 19.7 15.8 23.8

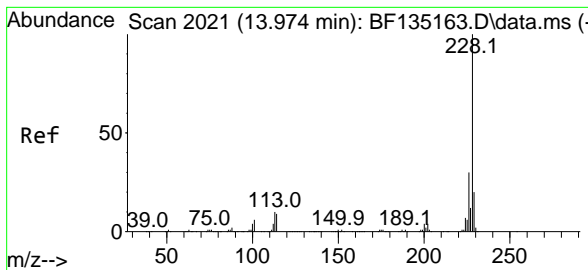


#82
 3,3'-Dichlorobenzidine
 Concen: 34.127 ng
 RT: 13.904 min Scan# 2009
 Delta R.T. 0.000 min
 Lab File: BF135174.D
 Acq: 12 Sep 2023 11:00



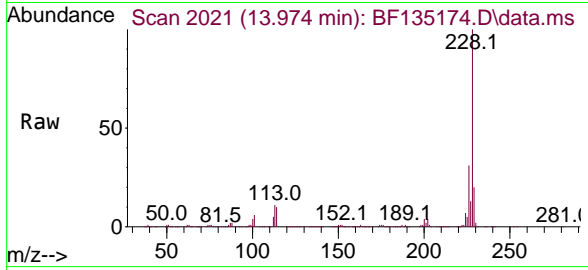
Tgt Ion:252 Resp: 163504
 Ion Ratio Lower Upper
 252 100
 254 63.0 51.0 76.4
 126 10.0 7.8 11.8



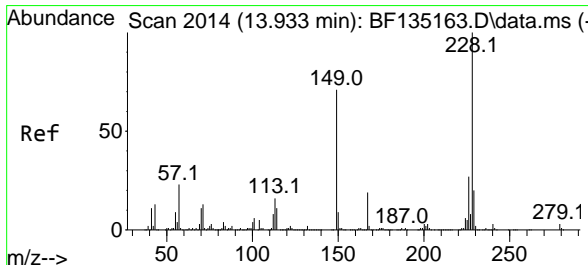
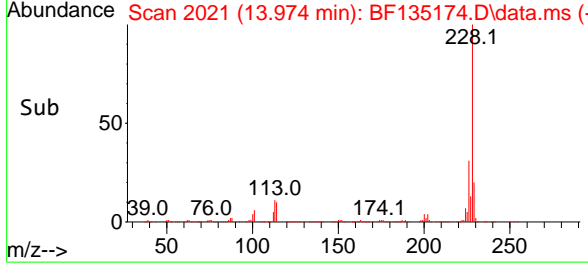
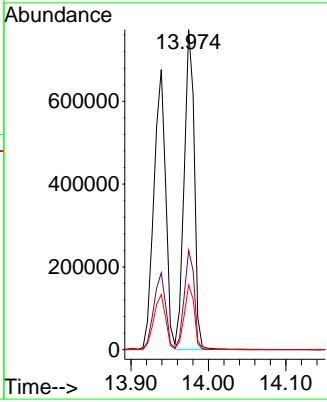


#83
 Chrysene
 Concen: 45.963 ng
 RT: 13.974 min Scan# 2021
 Delta R.T. 0.000 min
 Lab File: BF135174.D
 Acq: 12 Sep 2023 11:00

Instrument :
 BNA_F
 ClientSampleId :

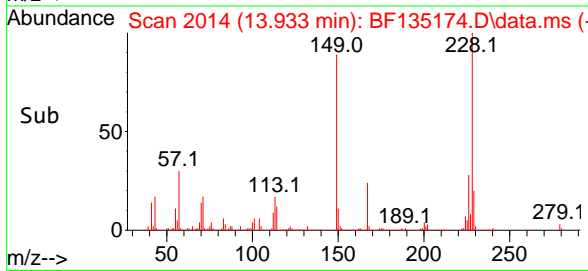
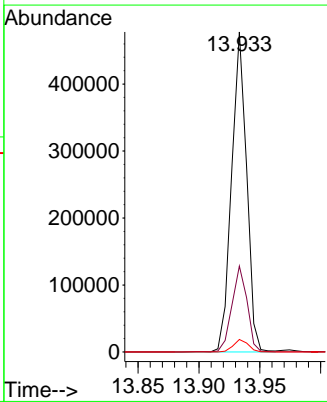
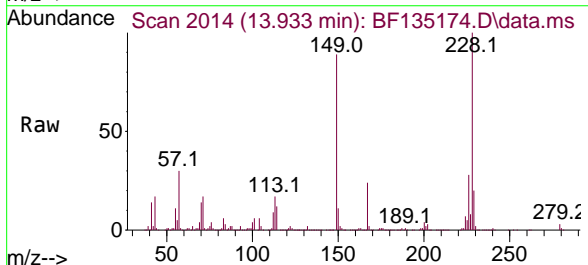


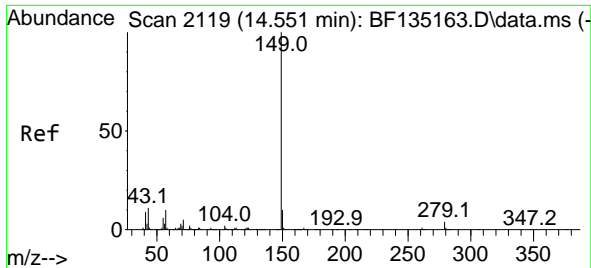
Tgt Ion:228 Resp: 700940
 Ion Ratio Lower Upper
 228 100
 226 31.1 24.3 36.5
 229 20.2 16.0 24.0



#84
 Bis(2-ethylhexyl)phthalate
 Concen: 50.156 ng
 RT: 13.933 min Scan# 2014
 Delta R.T. 0.000 min
 Lab File: BF135174.D
 Acq: 12 Sep 2023 11:00

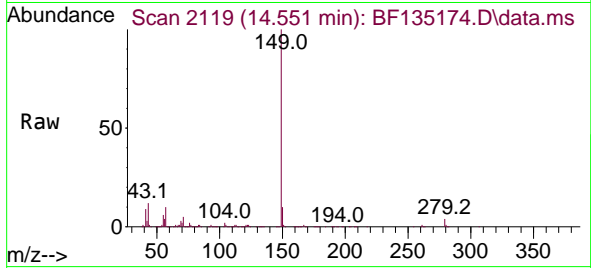
Tgt Ion:149 Resp: 409818
 Ion Ratio Lower Upper
 149 100
 167 26.8 21.9 32.9
 279 3.9 3.3 4.9



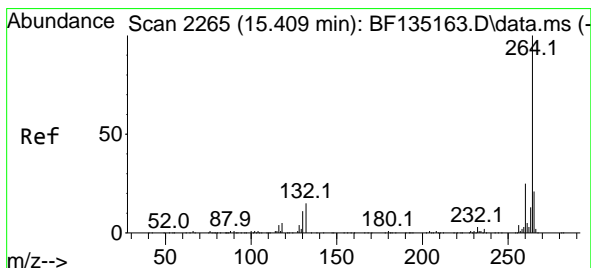
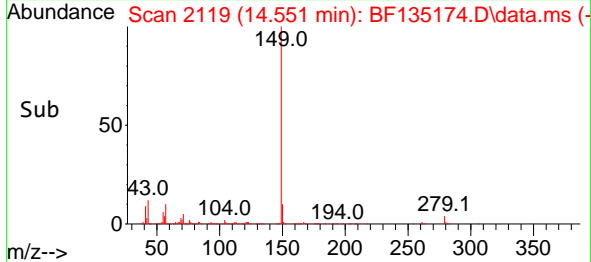
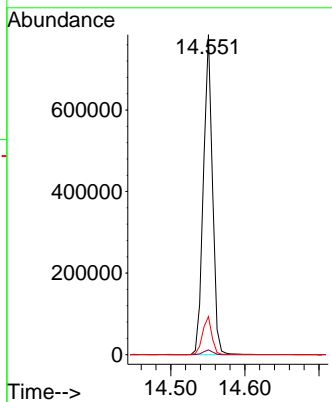


#85
 Di-n-octyl phthalate
 Concen: 51.418 ng
 RT: 14.551 min Scan# 2119
 Delta R.T. 0.000 min
 Lab File: BF135174.D
 Acq: 12 Sep 2023 11:00

Instrument : BNA_F
 ClientSampleId :

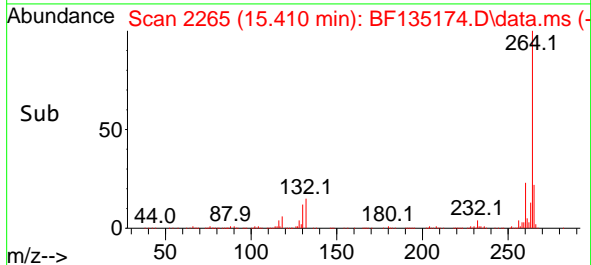
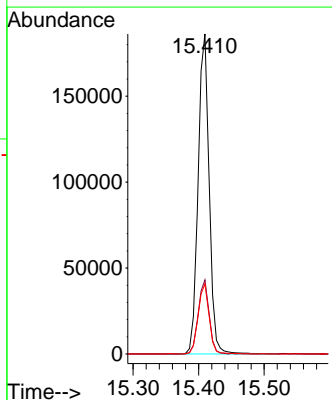
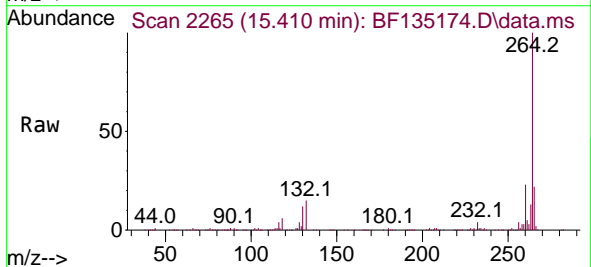


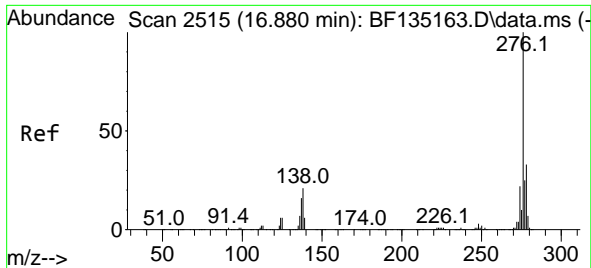
Tgt Ion:149 Resp: 667673
 Ion Ratio Lower Upper
 149 100
 167 1.6 1.1 1.7
 43 12.1 9.8 14.6



#86
 Perylene-d12
 Concen: 20.000 ng
 RT: 15.410 min Scan# 2265
 Delta R.T. 0.000 min
 Lab File: BF135174.D
 Acq: 12 Sep 2023 11:00

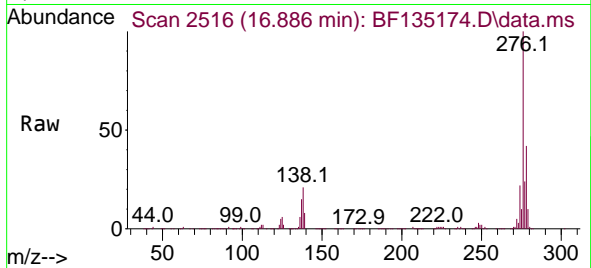
Tgt Ion:264 Resp: 218789
 Ion Ratio Lower Upper
 264 100
 260 23.1 19.8 29.6
 265 21.9 17.0 25.4



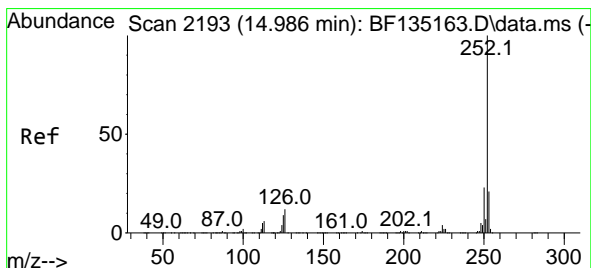
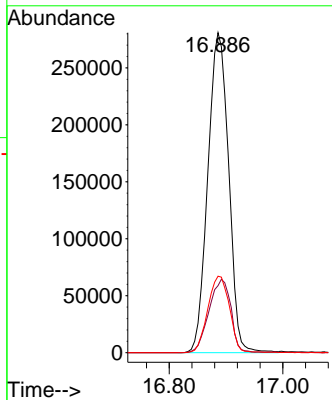
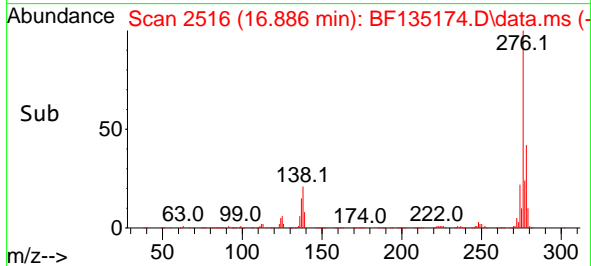


#87
 Indeno(1,2,3-cd)pyrene
 Concen: 49.745 ng
 RT: 16.886 min Scan# 2193
 Delta R.T. 0.006 min
 Lab File: BF135174.D
 Acq: 12 Sep 2023 11:00

Instrument :
 BNA_F
 ClientSampleId :

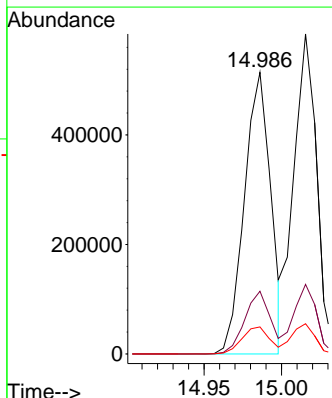
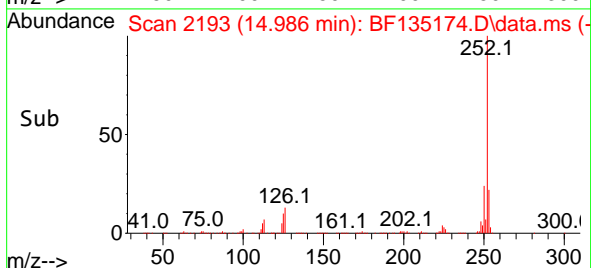
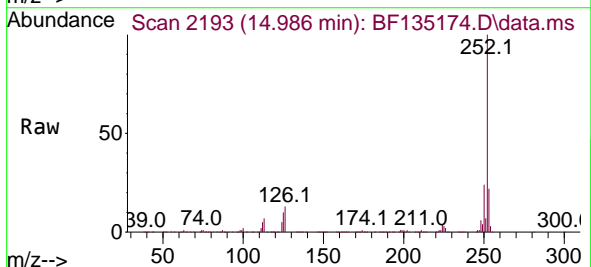


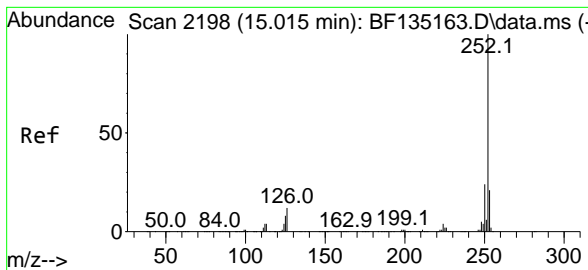
Tgt Ion:276 Resp: 713611
 Ion Ratio Lower Upper
 276 100
 138 24.2 19.2 28.8
 277 24.9 19.7 29.5



#88
 Benzo(b)fluoranthene
 Concen: 51.348 ng
 RT: 14.986 min Scan# 2193
 Delta R.T. 0.000 min
 Lab File: BF135174.D
 Acq: 12 Sep 2023 11:00

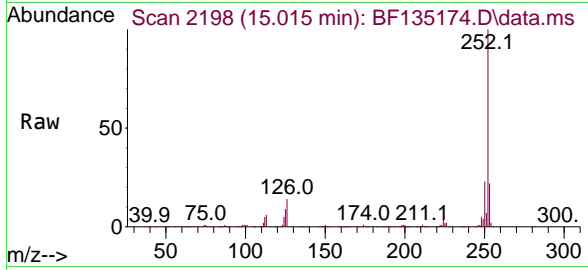
Tgt Ion:252 Resp: 608153
 Ion Ratio Lower Upper
 252 100
 253 22.3 17.2 25.8
 125 9.6 7.1 10.7



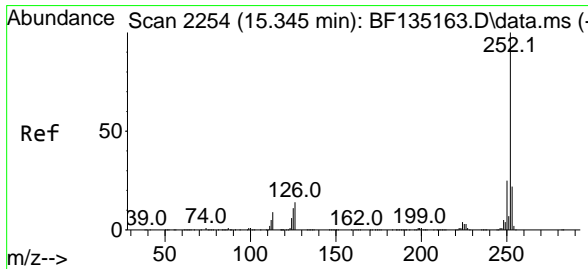
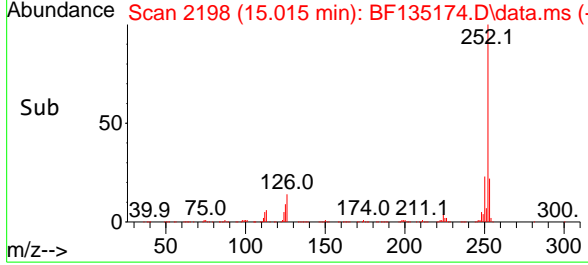
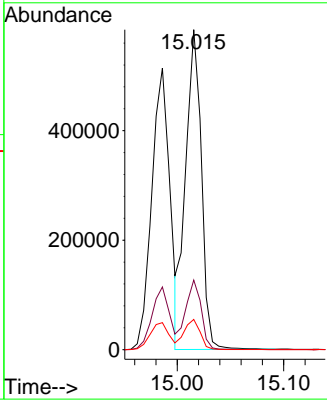


#89
 Benzo(k)fluoranthene
 Concen: 51.383 ng
 RT: 15.015 min Scan# 21
 Delta R.T. 0.000 min
 Lab File: BF135174.D
 Acq: 12 Sep 2023 11:00

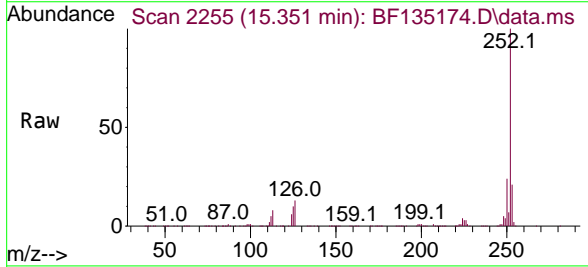
Instrument :
 BNA_F
 ClientSampleId :



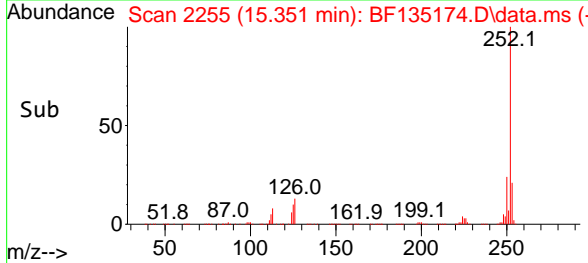
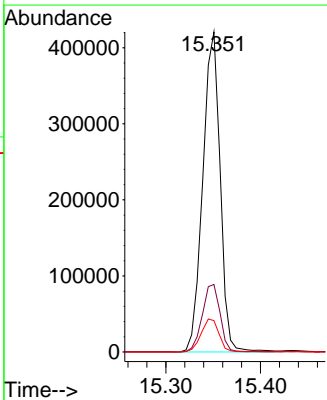
Tgt Ion:252 Resp: 601156
 Ion Ratio Lower Upper
 252 100
 253 21.8 17.4 26.0
 125 9.5 7.2 10.8

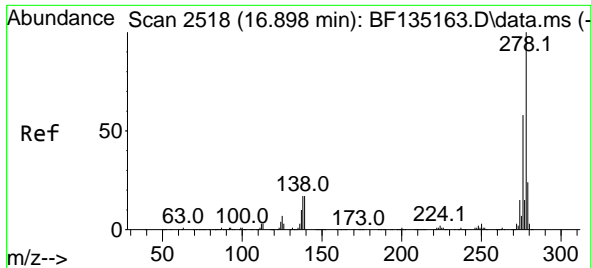


#90
 Benzo(a)pyrene
 Concen: 47.304 ng
 RT: 15.351 min Scan# 2255
 Delta R.T. 0.006 min
 Lab File: BF135174.D
 Acq: 12 Sep 2023 11:00



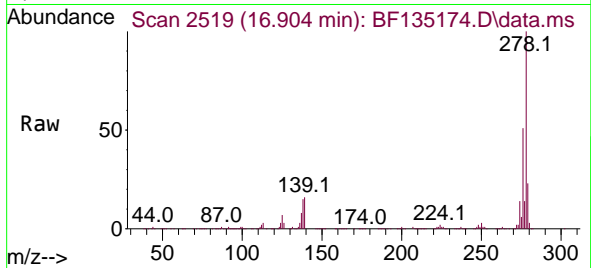
Tgt Ion:252 Resp: 534289
 Ion Ratio Lower Upper
 252 100
 253 21.1 17.5 26.3
 125 9.8 9.2 13.8



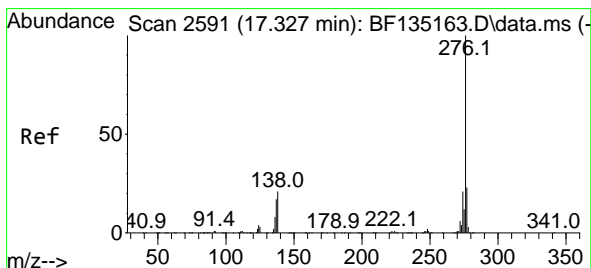
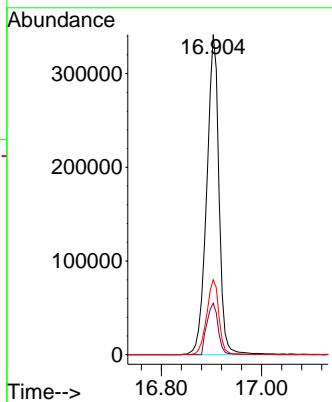
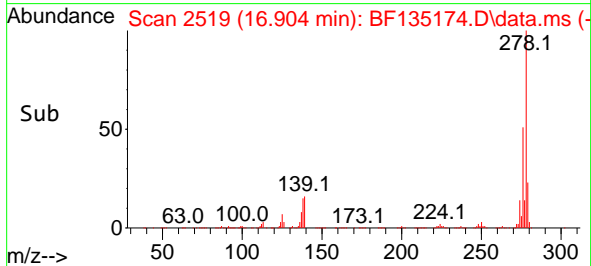


#91
 Dibenzo(a,h)anthracene
 Concen: 49.446 ng
 RT: 16.904 min Scan# 21
 Delta R.T. 0.006 min
 Lab File: BF135174.D
 Acq: 12 Sep 2023 11:00

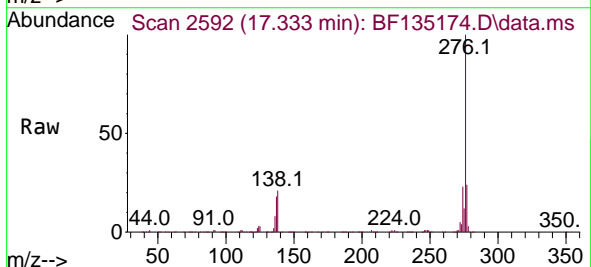
Instrument :
 BNA_F
 ClientSampleId :



Tgt Ion:278 Resp: 580370
 Ion Ratio Lower Upper
 278 100
 139 16.1 13.4 20.0
 279 23.4 19.0 28.6



#92
 Benzo(g,h,i)perylene
 Concen: 48.804 ng
 RT: 17.333 min Scan# 2592
 Delta R.T. 0.006 min
 Lab File: BF135174.D
 Acq: 12 Sep 2023 11:00



Tgt Ion:276 Resp: 598254
 Ion Ratio Lower Upper
 276 100
 277 24.1 18.8 28.2
 138 21.2 16.9 25.3

