

Data Path : Z:\SVOASRV\HPCHEM1\BNA F\DATA\BF092220\
 Data File : BF121656.D
 Acq On : 22 Sep 2020 23:27
 Operator : JU/CG
 Sample : L3864-15
 Misc :
 ALS Vial : 14 Sample Multiplier: 1

Instrument :
 BNA_F
 ClientSampleId :
 CL-02-092120

Quant Time: Sep 23 01:45:35 2020
 Quant Method : Z:\SVOASRV\HPCHEM1\BNA F\METHODS\8270-BF091020.M
 Quant Title : ASP BNA STANDARDS FOR 5 POINT CALIBRATION
 QLast Update : Tue Sep 22 17:53:26 2020
 Response via : Initial Calibration

Internal Standards	R.T.	QIon	Response	Conc	Units	Dev(Min)
1) 1,4-Dichlorobenzene-d4	6.81	152	152041	20.00	ng	0.00
21) Naphthalene-d8	8.09	136	595489	20.00	ng	0.00
39) Acenaphthene-d10	9.85	164	318361	20.00	ng	0.00
64) Phenanthrene-d10	11.33	188	622285	20.00	ng	0.00
76) Chrysene-d12	13.97	240	519903	20.00	ng	-0.01
86) Perylene-d12	15.42	264	385877	20.00	ng	0.00
System Monitoring Compounds						
5) 2-Fluorophenol	5.45	112	1150113	112.42	ng	0.02
7) Phenol-d6	6.45	99	1394981	103.93	ng	0.00
23) Nitrobenzene-d5	7.37	82	1126369	101.56	ng	0.00
42) 2,4,6-Tribromophenol	10.64	330	594455	150.24	ng	0.00
45) 2-Fluorobiphenyl	9.17	172	1945788	92.57	ng	0.00
79) Terphenyl-d14	12.93	244	2293168	89.36	ng	0.00

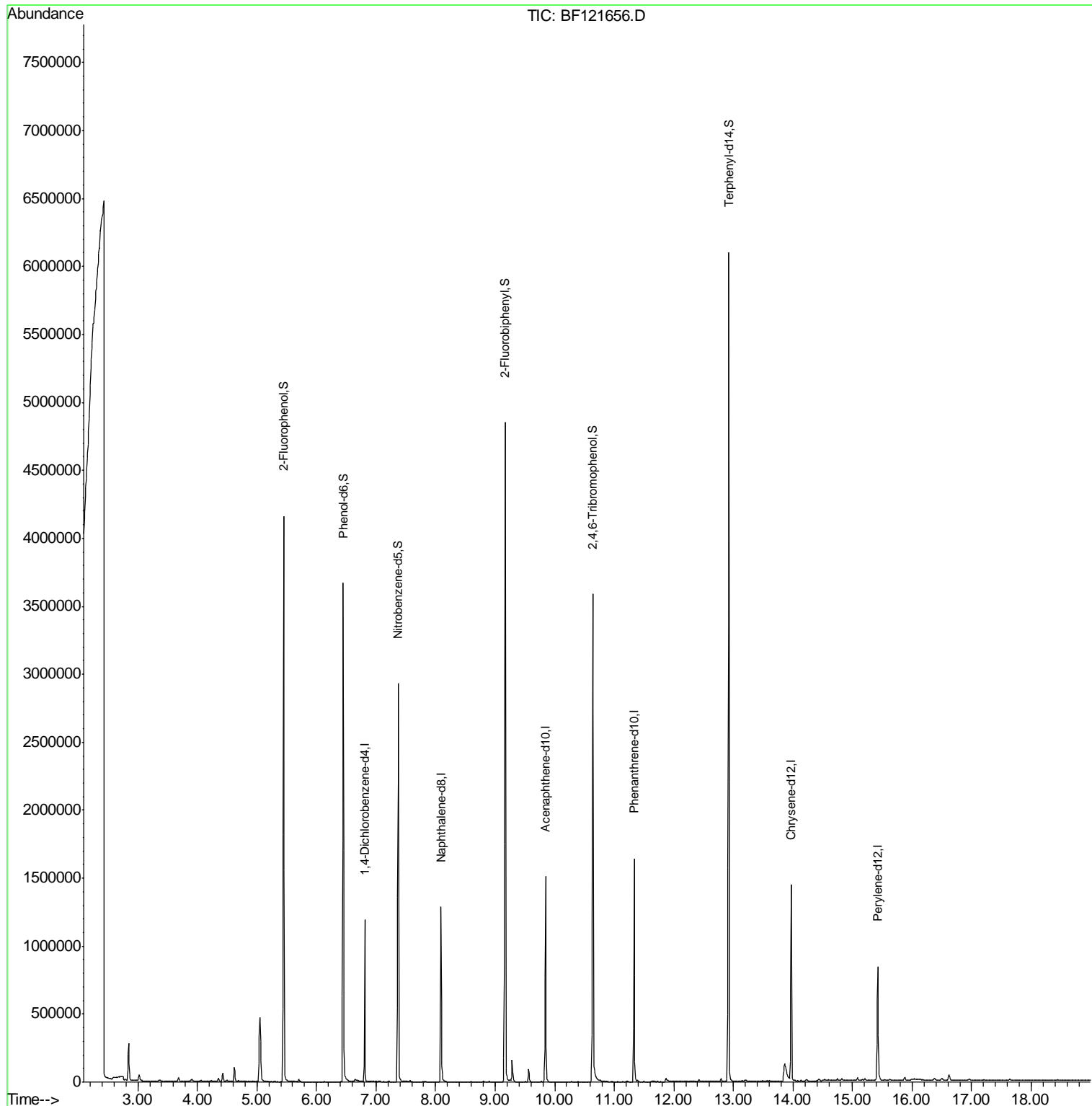
Target Compounds Qvalue

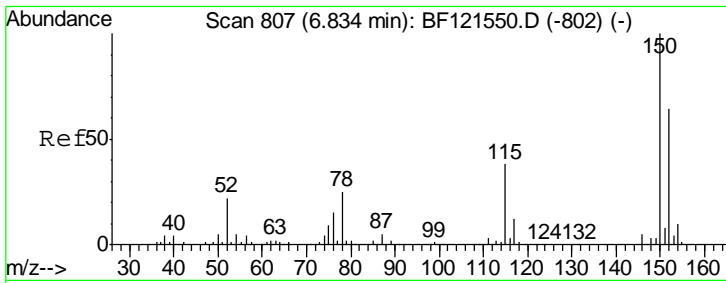
(#) = qualifier out of range (m) = manual integration (+) = signals summed

Data Path : Z:\SVOASRV\HPCHEM1\BNA F\DATA\BF092220\
 Data File : BF121656.D
 Acq On : 22 Sep 2020 23:27
 Operator : JU/CG
 Sample : L3864-15
 Misc :
 ALS Vial : 14 Sample Multiplier: 1

Instrument :
 BNA_F
 ClientSampleId :
 CL-02-092120

Quant Time: Sep 23 01:45:35 2020
 Quant Method : Z:\SVOASRV\HPCHEM1\BNA F\METHODS\8270-BF091020.M
 Quant Title : ASP BNA STANDARDS FOR 5 POINT CALIBRATION
 QLast Update : Tue Sep 22 17:53:26 2020
 Response via : Initial Calibration

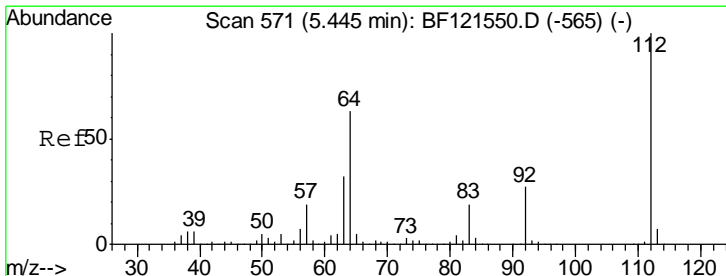
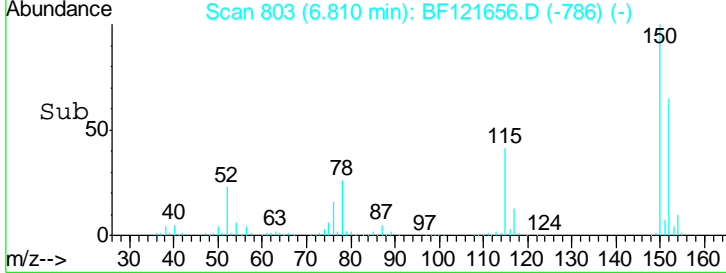
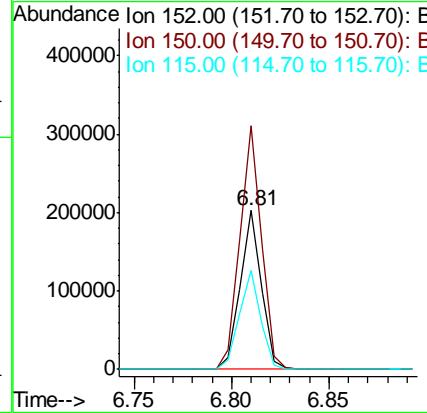
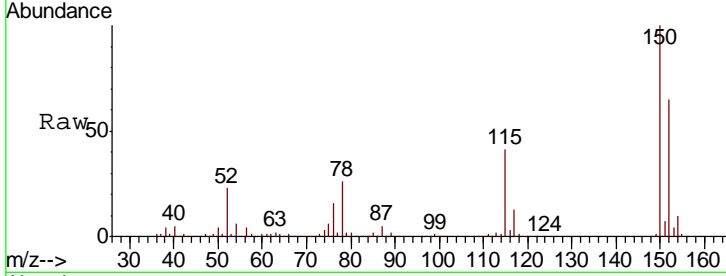




#1
 1,4-Dichlorobenzene-d4
 Concen: 20.000 ng
 RT: 6.81 min Scan# 803
 Delta R.T. 0.00 min
 Lab File: BF121656.D
 Acq: 22 Sep 2020 23:27

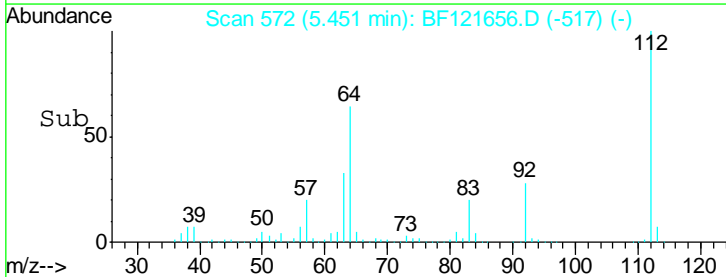
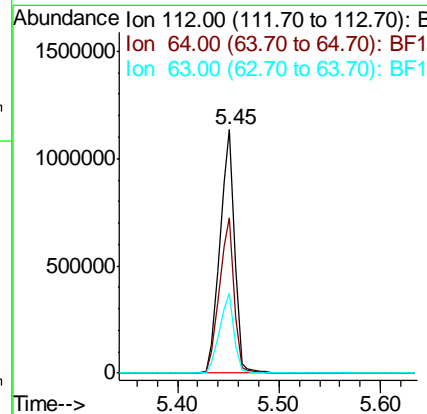
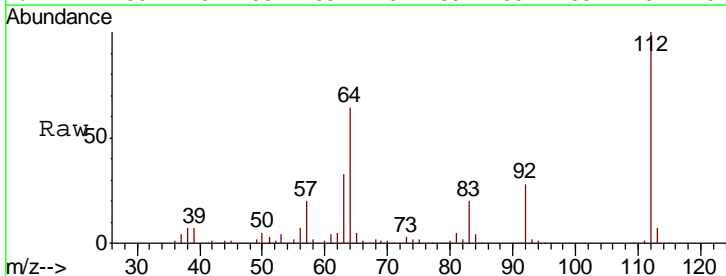
Instrument :
 BNA_F
 ClientSampleId :
 CL-02-092120

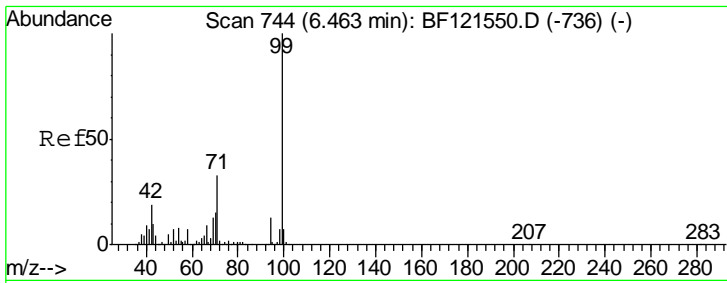
Tgt Ion	Resp	Lower	Upper
152	152041		
150	153.3	128.1	192.1
115	62.6	52.6	79.0



#5
 2-Fluorophenol
 Concen: 112.418 ng
 RT: 5.45 min Scan# 572
 Delta R.T. 0.02 min
 Lab File: BF121656.D
 Acq: 22 Sep 2020 23:27

Tgt Ion	Resp	Lower	Upper
112	1150113		
64	63.6	52.2	78.2
63	32.8	26.6	39.8



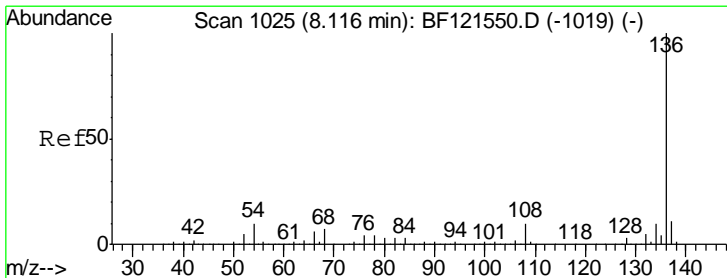
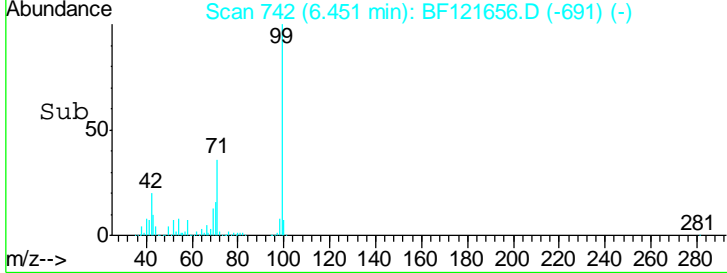
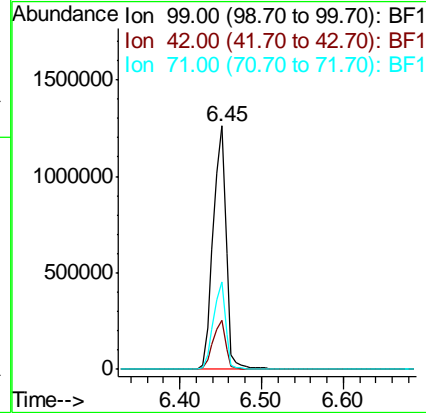
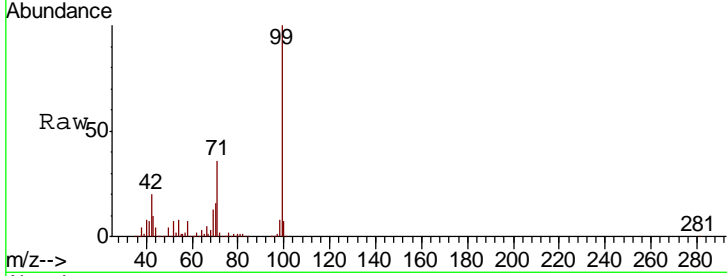


#7
 Phenol-d6
 Concen: 103.932 ng
 RT: 6.45 min Scan# 742
 Delta R.T. 0.00 min
 Lab File: BF121656.D
 Acq: 22 Sep 2020 23:27

Instrument :
 BNA_F
ClientSampled :
 CL-02-092120

Tgt Ion: 99 Resp: 1394981

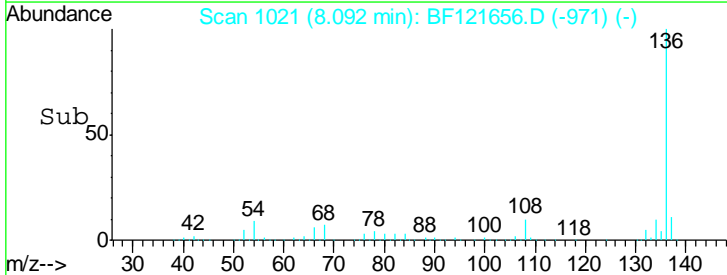
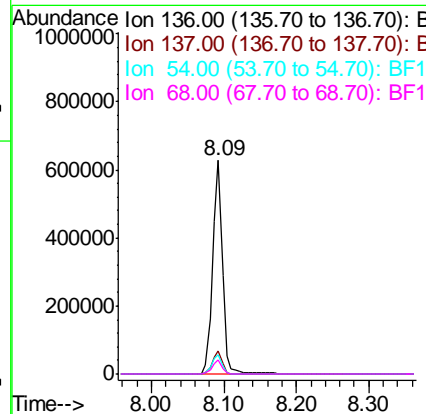
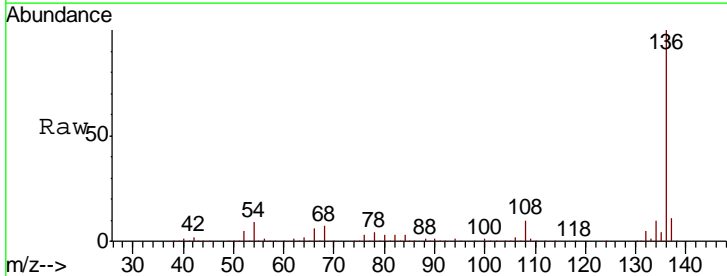
Ion	Ratio	Lower	Upper
99	100		
42	20.0	15.5	23.3
71	36.0	27.4	41.2

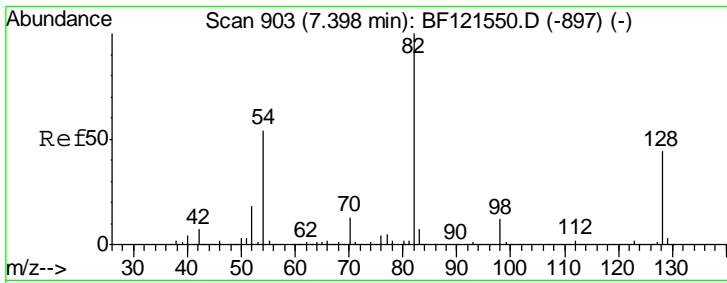


#21
 Naphthalene-d8
 Concen: 20.000 ng
 RT: 8.09 min Scan# 1021
 Delta R.T. -0.01 min
 Lab File: BF121656.D
 Acq: 22 Sep 2020 23:27

Tgt Ion: 136 Resp: 595489

Ion	Ratio	Lower	Upper
136	100		
137	10.8	8.9	13.3
54	8.8	7.4	11.0
68	6.5	5.3	7.9



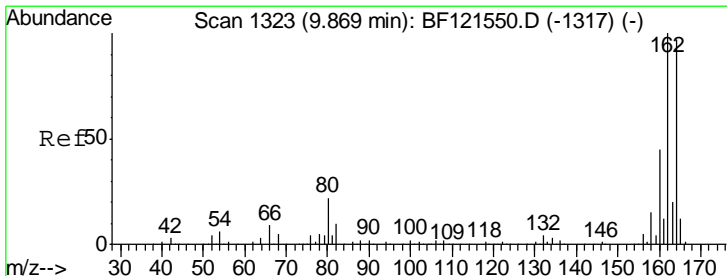
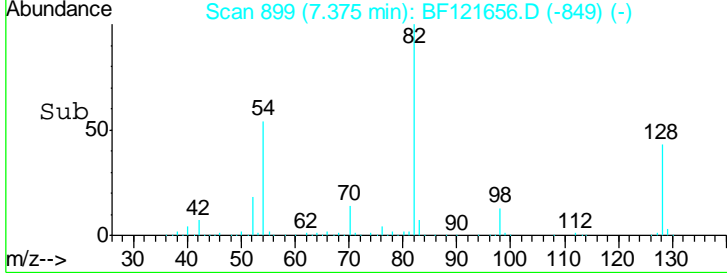
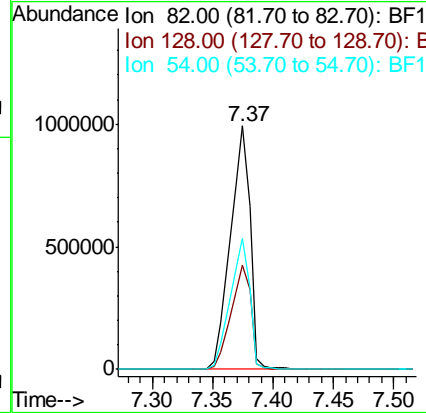
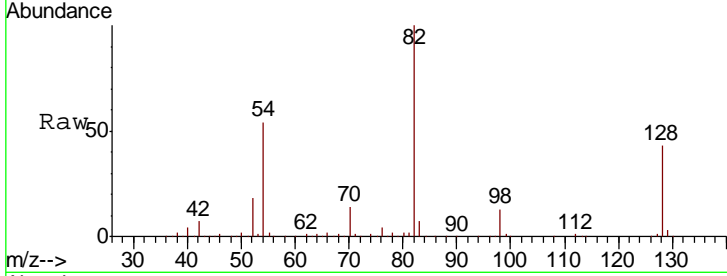


#23
 Nitrobenzene-d5
 Concen: 101.558 ng
 RT: 7.37 min Scan# 899
 Delta R.T. -0.01 min
 Lab File: BF121656.D
 Acq: 22 Sep 2020 23:27

Instrument :
 BNA_F
 ClientSampleID :
 CL-02-092120

Tot Ion: 82 Resp: 1126369

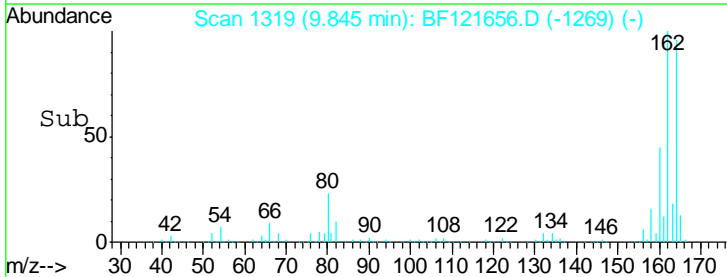
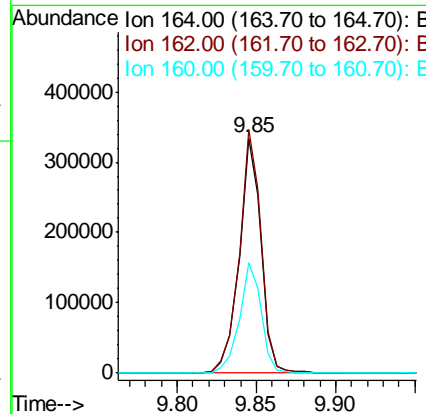
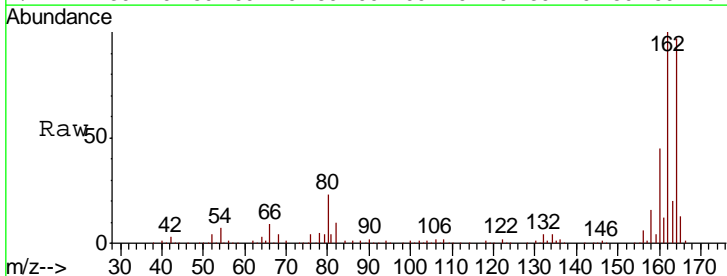
Ion	Ratio	Lower	Upper
82	100		
128	42.7	33.9	50.9
54	53.7	42.9	64.3

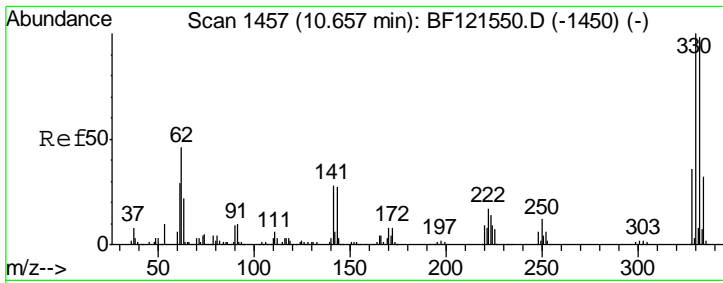


#39
 Acenaphthene-d10
 Concen: 20.000 ng
 RT: 9.85 min Scan# 1319
 Delta R.T. -0.01 min
 Lab File: BF121656.D
 Acq: 22 Sep 2020 23:27

Tgt Ion: 164 Resp: 318361

Ion	Ratio	Lower	Upper
164	100		
162	103.6	81.2	121.8
160	46.8	36.2	54.4

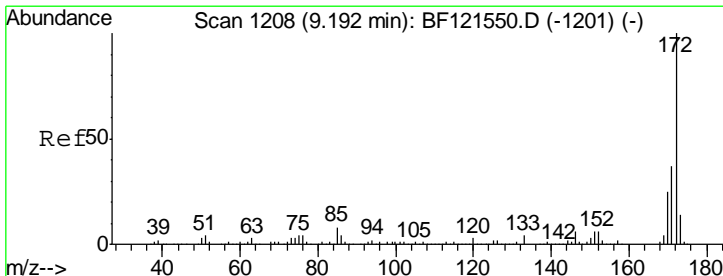
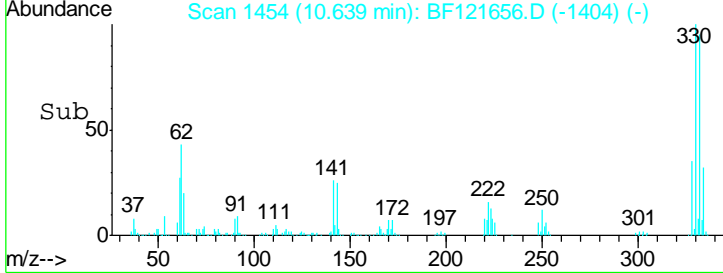
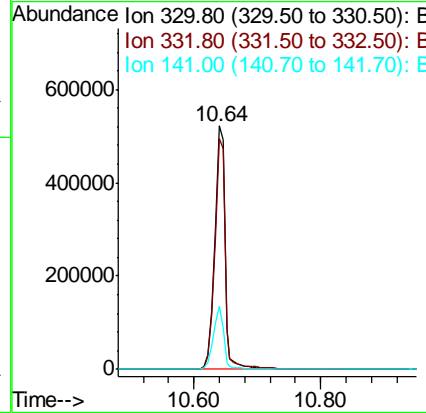
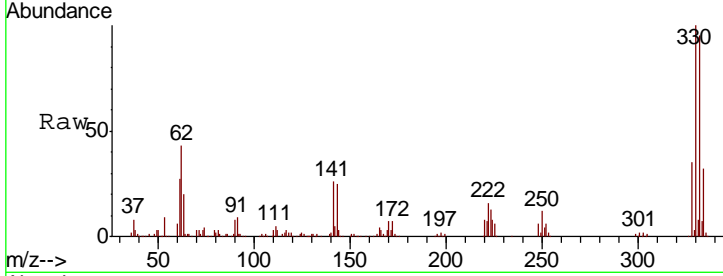




#42
 2,4,6-Tribromophenol
 Concen: 150.236 ng
 RT: 10.64 min Scan# 1454
 Delta R.T. -0.01 min
 Lab File: BF121656.D
 Acq: 22 Sep 2020 23:27

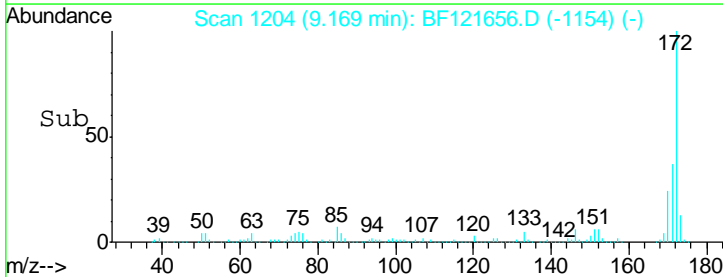
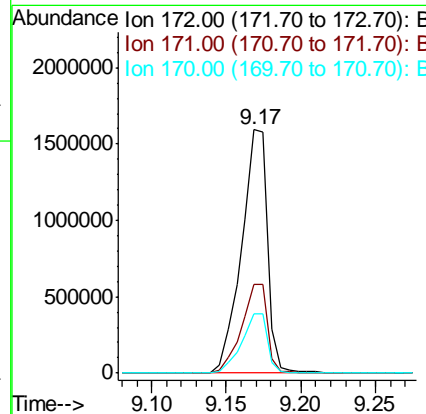
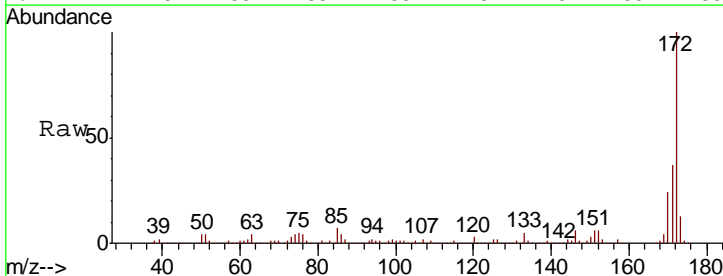
Instrument :
 BNA_F
 ClientSampleId :
 CL-02-092120

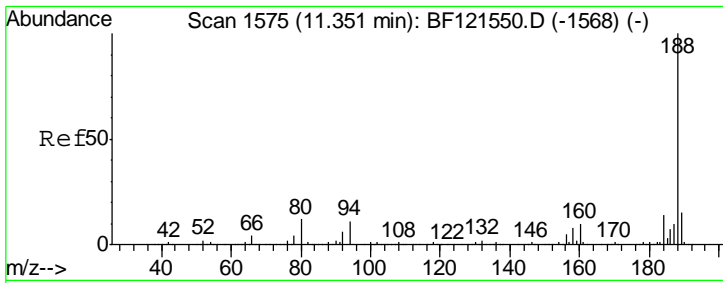
Tgt Ion	Resp	Lower	Upper
330	100		
332	95.5	76.9	115.3
141	26.4	22.4	33.6



#45
 2-Fluorobiphenyl
 Concen: 92.566 ng
 RT: 9.17 min Scan# 1204
 Delta R.T. -0.01 min
 Lab File: BF121656.D
 Acq: 22 Sep 2020 23:27

Tgt Ion	Resp	Lower	Upper
172	100		
171	36.7	29.3	43.9
170	24.4	19.5	29.3

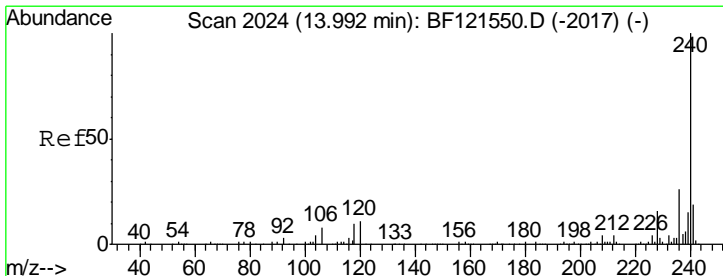
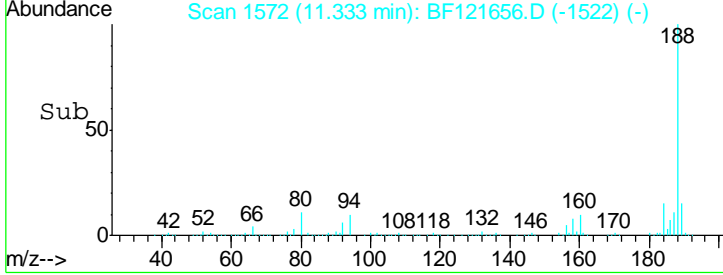
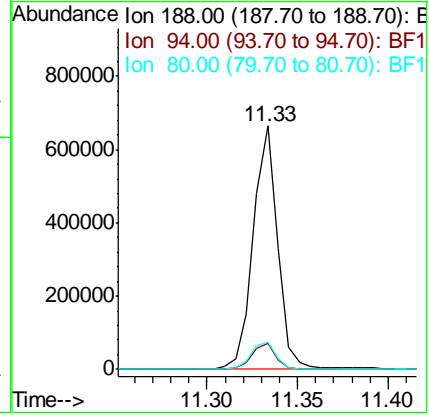
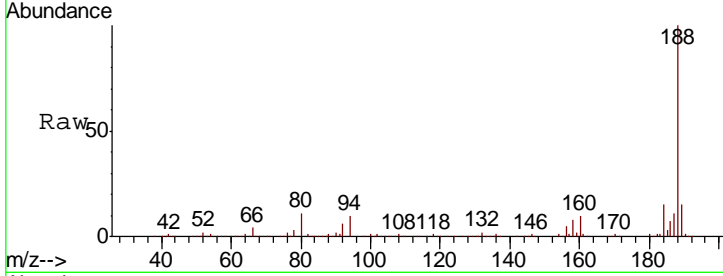




#64
 Phenanthrene-d10
 Concen: 20.000 ng
 RT: 11.33 min Scan# 1572
 Delta R.T. -0.01 min
 Lab File: BF121656.D
 Acq: 22 Sep 2020 23:27

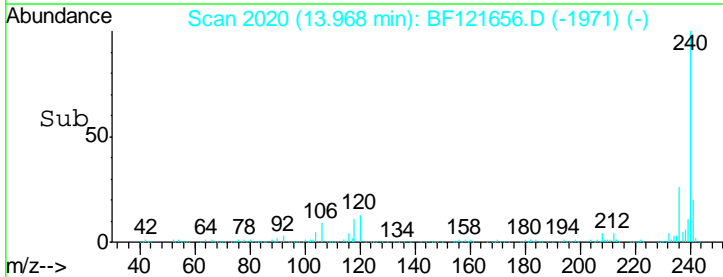
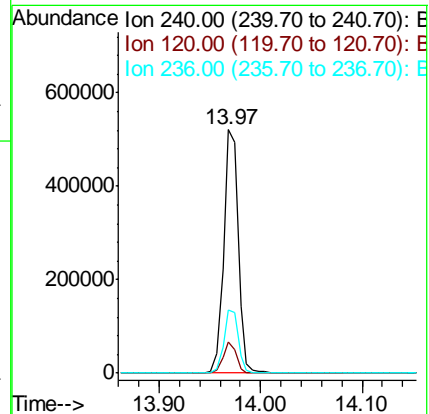
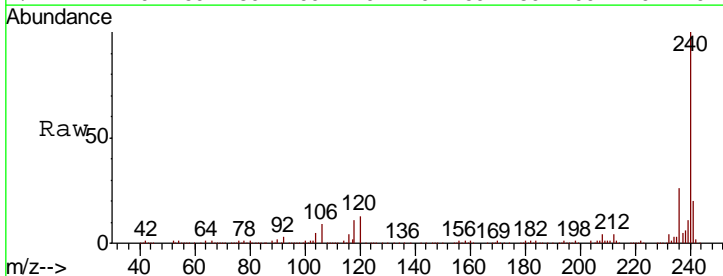
Instrument :
 BNA_F
 ClientSampleId :
 CL-02-092120

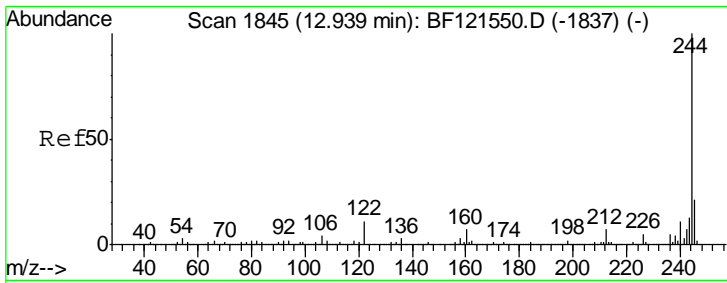
Tgt Ion	Resp	Lower	Upper
188	622285		
94	10.4	8.4	12.6
80	11.1	9.0	13.4



#76
 Chrysene-d12
 Concen: 20.000 ng
 RT: 13.97 min Scan# 2020
 Delta R.T. -0.01 min
 Lab File: BF121656.D
 Acq: 22 Sep 2020 23:27

Tgt Ion	Resp	Lower	Upper
240	519903		
120	12.9	9.2	13.8
236	26.1	20.4	30.6

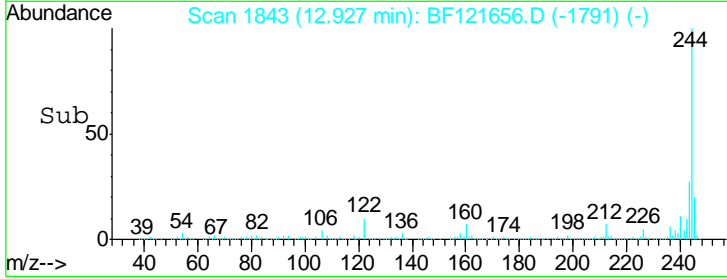
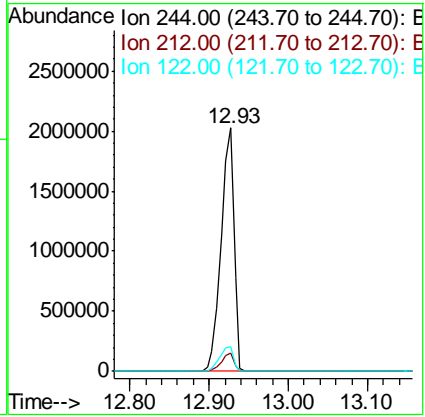
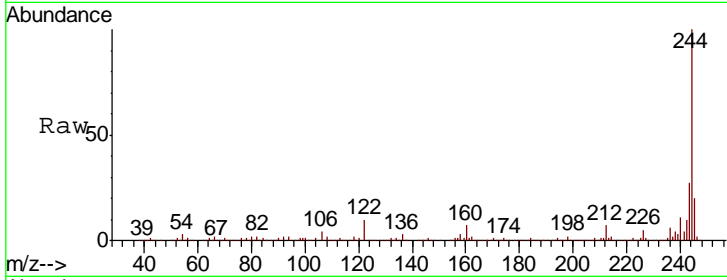




#79
 Terphenyl-d14
 Concen: 89.358 ng
 RT: 12.93 min Scan# 1843
 Delta R.T. 0.01 min
 Lab File: BF121656.D
 Acq: 22 Sep 2020 23:27

Instrument :
 BNA_F
ClientSampled :
 CL-02-092120

Tgt Ion	Resp	Lower	Upper
244	100		
212	7.3	5.5	8.3
122	10.2	7.4	11.0



#86
 Perylene-d12
 Concen: 20.000 ng
 RT: 15.42 min Scan# 2267
 Delta R.T. -0.01 min
 Lab File: BF121656.D
 Acq: 22 Sep 2020 23:27

Tgt Ion	Resp	Lower	Upper
264	100		
260	23.9	18.8	28.2
265	21.6	17.3	25.9

