

Data Path : Z:\svoasrv\HPCHEM1\BNA\_F\Data\BF092524\  
 Data File : BF139541.D  
 Acq On : 25 Sep 2024 21:12  
 Operator : RC/JU  
 Sample : P4167-01 10X  
 Misc :  
 ALS Vial : 14 Sample Multiplier: 1

**Instrument :**  
 BNA\_F  
**ClientSampleId :**  
 PL-03-09242024

**Manual Integrations**  
**APPROVED**  
 Reviewed By :Jagrut Upadhyay 09/26/2024  
 Supervised By :mohammad ahmed 09/27/2024

Quant Time: Sep 26 01:29:30 2024  
 Quant Method : Z:\svoasrv\HPCHEM1\BNA\_F\Methods\8270-BF091324.M  
 Quant Title : ASP BNA STANDARDS FOR 5 POINT CALIBRATION  
 QLast Update : Sat Sep 14 02:58:23 2024  
 Response via : Initial Calibration

Compound	R.T.	QIon	Response	Conc	Units	Dev(Min)
Internal Standards						
1) 1,4-Dichlorobenzene-d4	6.875	152	77103	20.000	ng	0.00
21) Naphthalene-d8	8.157	136	280900	20.000	ng	# 0.00
39) Acenaphthene-d10	9.910	164	135750	20.000	ng	0.00
64) Phenanthrene-d10	11.398	188	228752	20.000	ng	0.00
76) Chrysene-d12	14.033	240	145730	20.000	ng	# 0.00
86) Perylene-d12	15.509	264	106819	20.000	ng	0.01
System Monitoring Compounds						
5) 2-Fluorophenol	5.487	112	46126	9.759	ng	0.00
7) Phenol-d6	6.504	99	59431	9.580	ng	0.00
23) Nitrobenzene-d5	7.433	82	38304	6.411	ng	-0.01
42) 2,4,6-Tribromophenol	10.698	330	9752	6.748	ng	0.00
45) 2-Fluorobiphenyl	9.227	172	71353	7.372	ng	0.00
79) Terphenyl-d14	12.980	244	63357	7.136	ng	0.00
Target Compounds						Qvalue
75) Fluoranthene	12.610	202	25255	2.143	ng	99
88) Benzo(b)fluoranthene	15.074	252	15306m	2.323	ng	

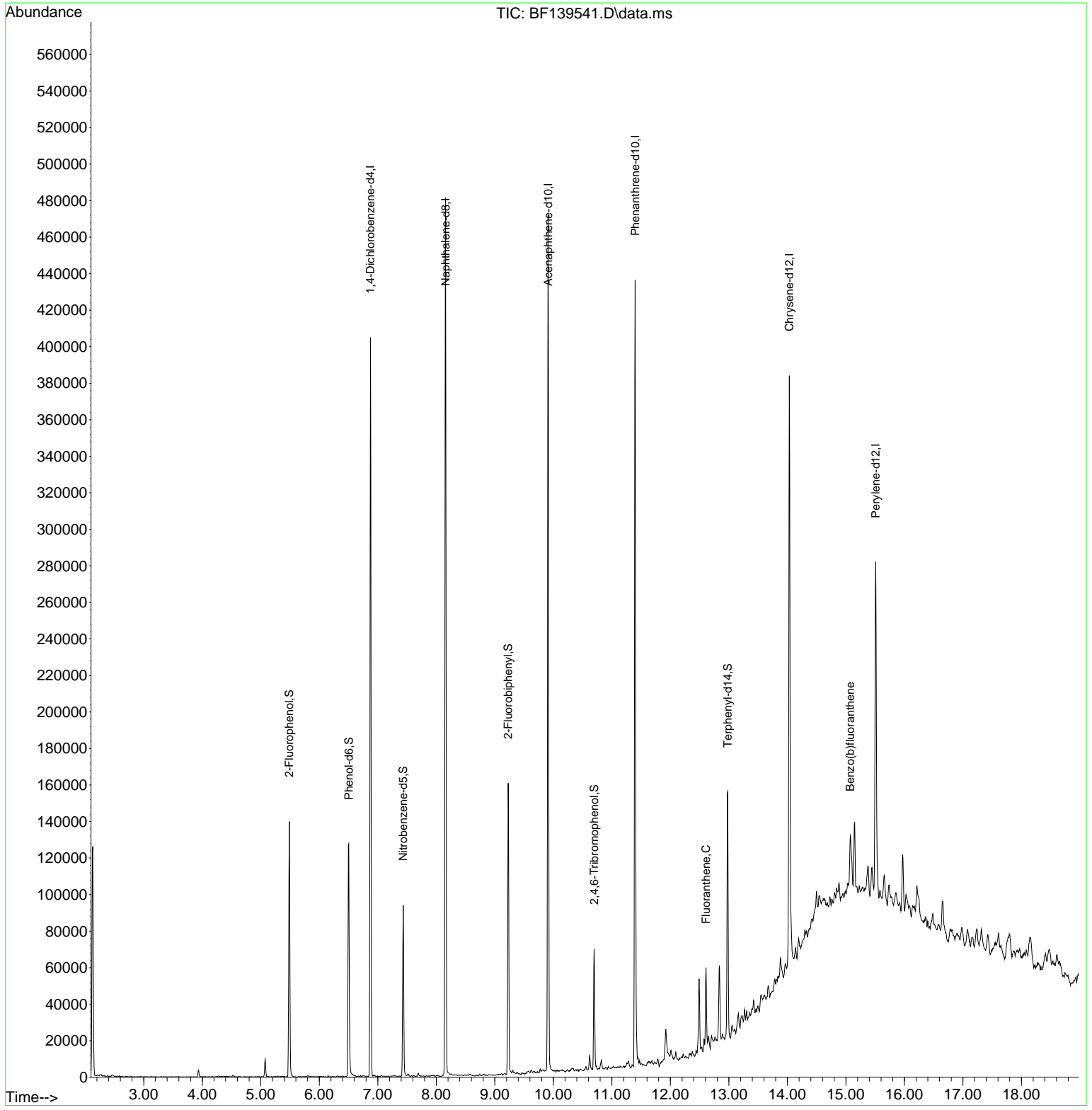
(#) = qualifier out of range (m) = manual integration (+) = signals summed

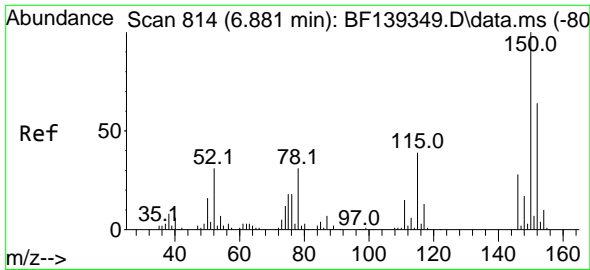
Data Path : Z:\svoasrv\HPCHEM1\BNA\_F\Data\BF092524\  
 Data File : BF139541.D  
 Acq On : 25 Sep 2024 21:12  
 Operator : RC/JU  
 Sample : P4167-01 10X  
 Misc :  
 ALS Vial : 14 Sample Multiplier: 1

**Instrument :**  
 BNA\_F  
**ClientSampleId :**  
 PL-03-09242024

Quant Time: Sep 26 01:29:30 2024  
 Quant Method : Z:\svoasrv\HPCHEM1\BNA\_F\Methods\8270-BF091324.M  
 Quant Title : ASP BNA STANDARDS FOR 5 POINT CALIBRATION  
 QLast Update : Sat Sep 14 02:58:23 2024  
 Response via : Initial Calibration

**Manual Integrations**  
**APPROVED**  
 Reviewed By :Jagrut Upadhyay 09/26/2024  
 Supervised By :mohammad ahmed 09/27/2024





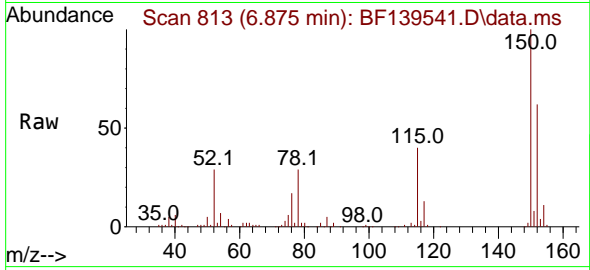
#1  
 1,4-Dichlorobenzene-d4  
 Concen: 20.000 ng  
 RT: 6.875 min Scan# 814  
 Delta R.T. -0.006 min  
 Lab File: BF139541.D  
 Acq: 25 Sep 2024 21:12

Instrument :

BNA\_F

Client Sample Id :

PL-03-09242024

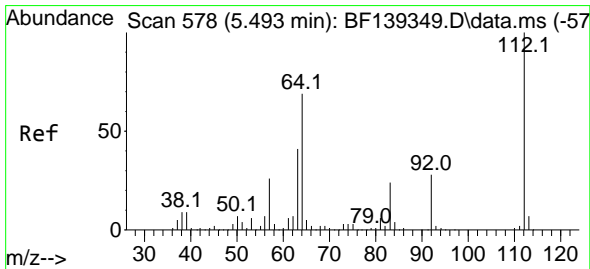
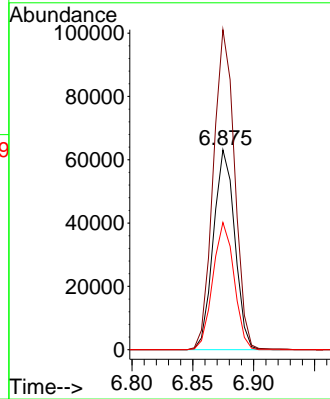
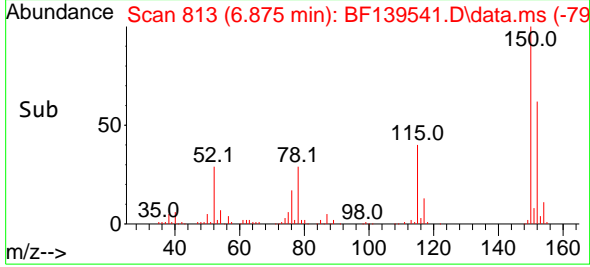


Tgt Ion:152 Resp: 7710  
 Ion Ratio Lower Upper  
 152 100  
 150 160.2 124.1 186.1  
 115 63.7 48.1 72.1

Manual Integrations

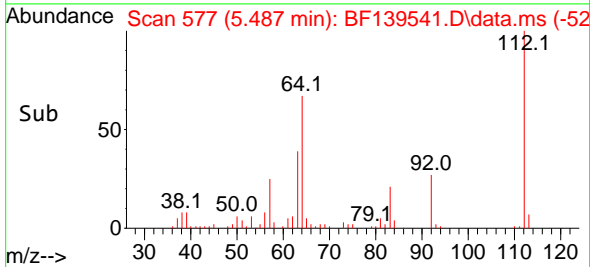
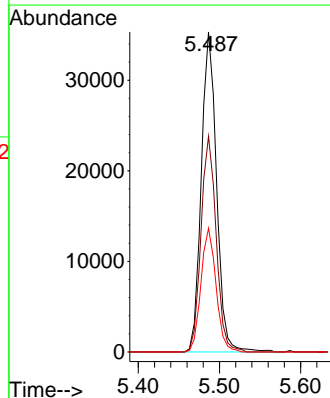
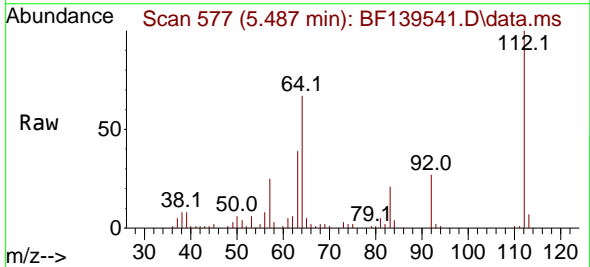
APPROVED

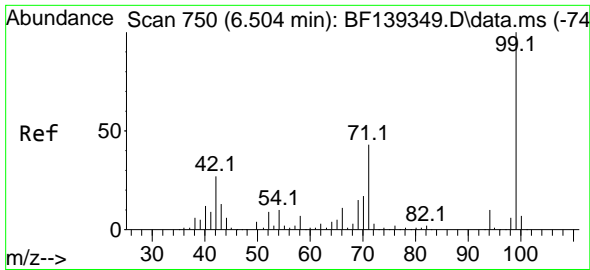
Reviewed By :Jagrut Upadhyay 09/26/2024  
 Supervised By :mohammad ahmed 09/27/2024



#5  
 2-Fluorophenol  
 Concen: 9.759 ng  
 RT: 5.487 min Scan# 577  
 Delta R.T. -0.006 min  
 Lab File: BF139541.D  
 Acq: 25 Sep 2024 21:12

Tgt Ion:112 Resp: 46126  
 Ion Ratio Lower Upper  
 112 100  
 64 67.4 54.8 82.2  
 63 38.6 33.0 49.4





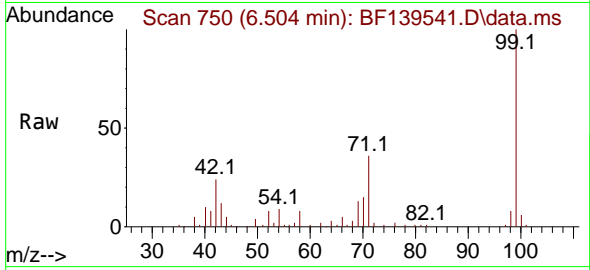
#7  
 Phenol-d6  
 Concen: 9.580 ng  
 RT: 6.504 min Scan# 71  
 Delta R.T. -0.000 min  
 Lab File: BF139541.D  
 Acq: 25 Sep 2024 21:12

Instrument :

BNA\_F

ClientSampleId :

PL-03-09242024

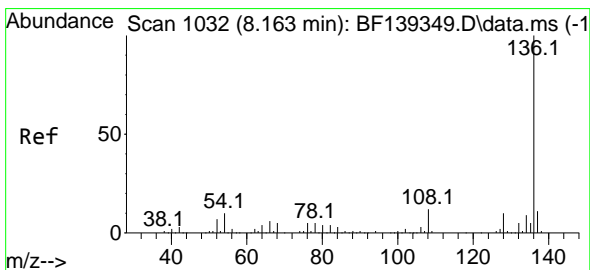
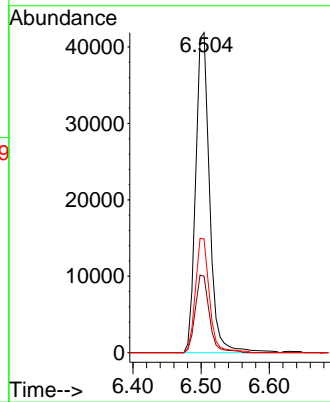
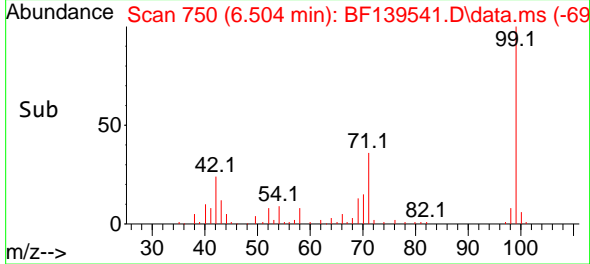


Tgt Ion: 99 Resp: 5943  
 Ion Ratio Lower Upper  
 99 100  
 42 23.9 21.9 32.9  
 71 35.6 34.6 52.0

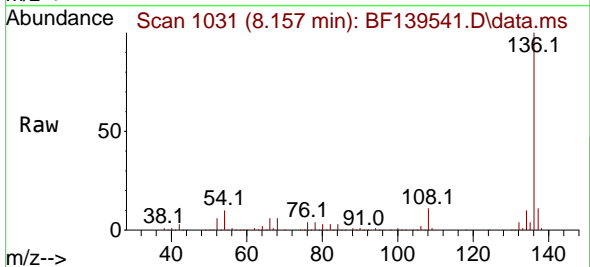
Manual Integrations

APPROVED

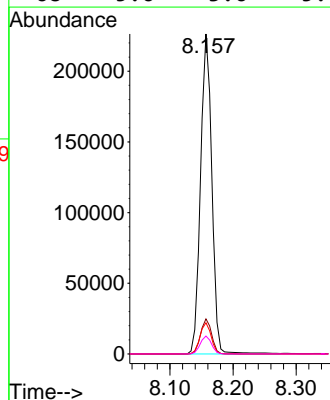
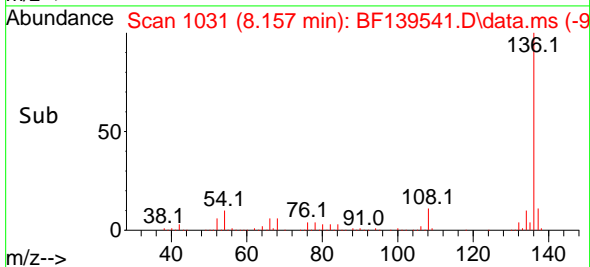
Reviewed By :Jagrut Upadhyay 09/26/2024  
 Supervised By :mohammad ahmed 09/27/2024

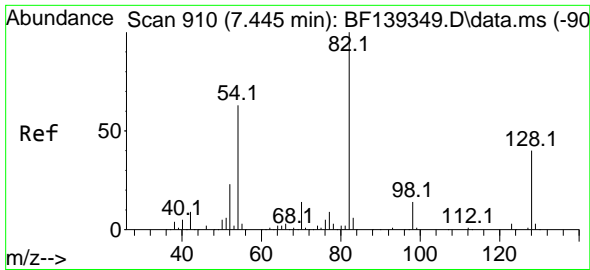


#21  
 Naphthalene-d8  
 Concen: 20.000 ng  
 RT: 8.157 min Scan# 1031  
 Delta R.T. -0.006 min  
 Lab File: BF139541.D  
 Acq: 25 Sep 2024 21:12



Tgt Ion:136 Resp: 280900  
 Ion Ratio Lower Upper  
 136 100  
 137 10.9 8.6 12.8  
 54 9.8 7.8 11.8  
 68 5.6 3.6 5.4#





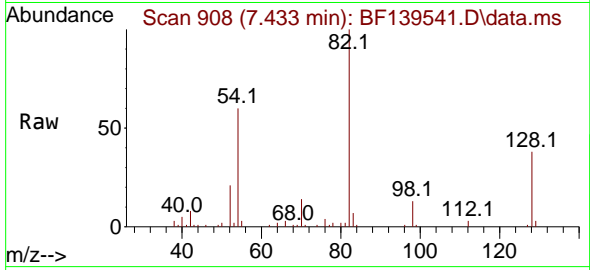
#23  
 Nitrobenzene-d5  
 Concen: 6.411 ng  
 RT: 7.433 min Scan# 908  
 Delta R.T. -0.012 min  
 Lab File: BF139541.D  
 Acq: 25 Sep 2024 21:12

Instrument :

BNA\_F

Client Sample Id :

PL-03-09242024

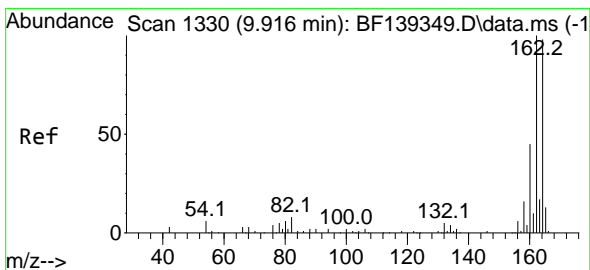
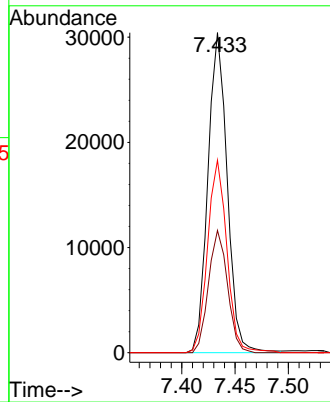
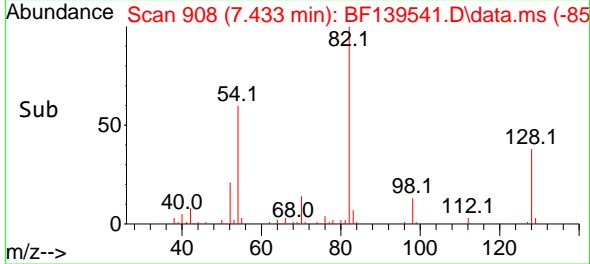


Tgt Ion: 82 Resp: 38304  
 Ion Ratio Lower Upper  
 82 100  
 128 38.2 31.8 47.6  
 54 60.2 50.6 75.8

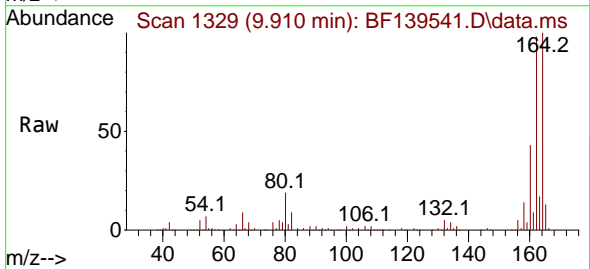
Manual Integrations

APPROVED

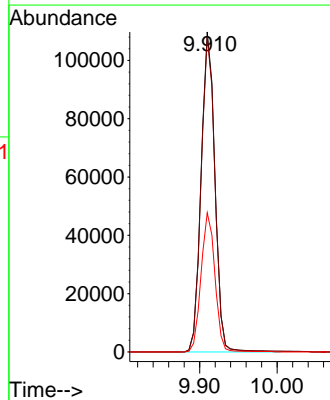
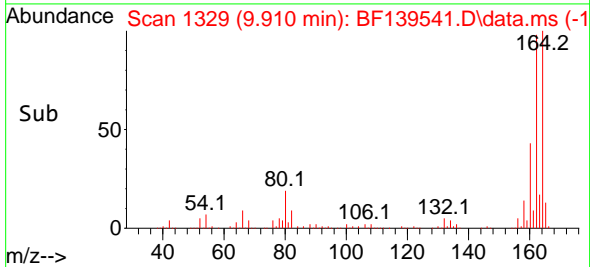
Reviewed By :Jagrut Upadhyay 09/26/2024  
 Supervised By :mohammad ahmed 09/27/2024

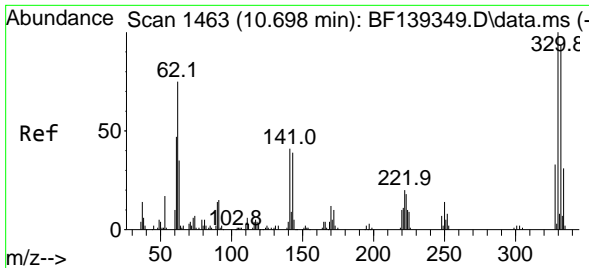


#39  
 Acenaphthene-d10  
 Concen: 20.000 ng  
 RT: 9.910 min Scan# 1329  
 Delta R.T. -0.006 min  
 Lab File: BF139541.D  
 Acq: 25 Sep 2024 21:12



Tgt Ion:164 Resp: 135750  
 Ion Ratio Lower Upper  
 164 100  
 162 98.4 81.3 121.9  
 160 43.5 36.4 54.6





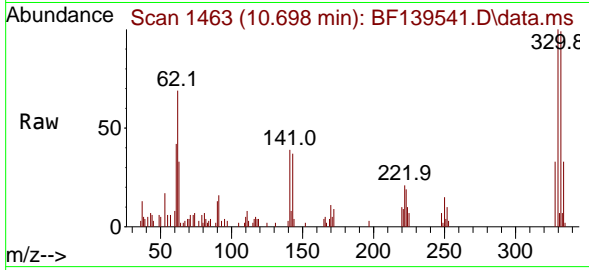
#42  
 2,4,6-Tribromophenol  
 Concen: 6.748 ng  
 RT: 10.698 min Scan# 1463  
 Delta R.T. -0.000 min  
 Lab File: BF139541.D  
 Acq: 25 Sep 2024 21:12

Instrument :

BNA\_F

ClientSampleId :

PL-03-09242024

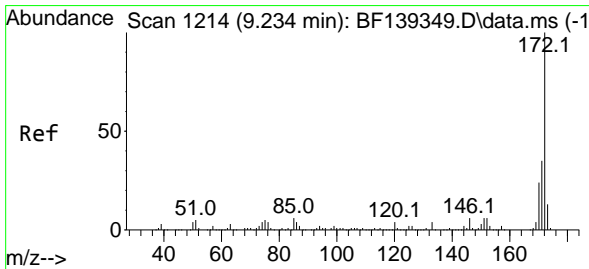
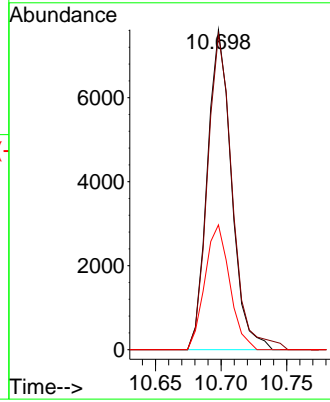
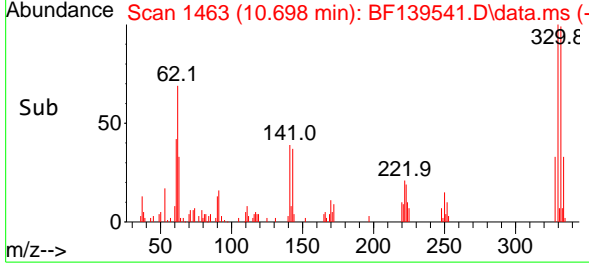


Tgt Ion: 330 Resp: 975  
 Ion Ratio Lower Upper  
 330 100  
 332 100.9 75.2 112.8  
 141 40.1 31.2 46.8

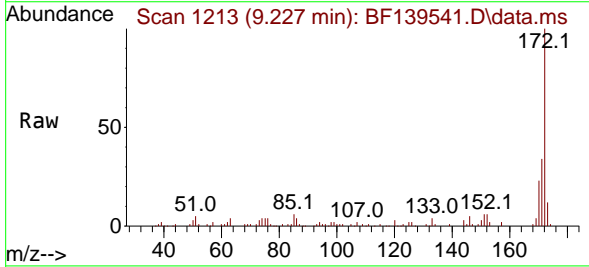
Manual Integrations

APPROVED

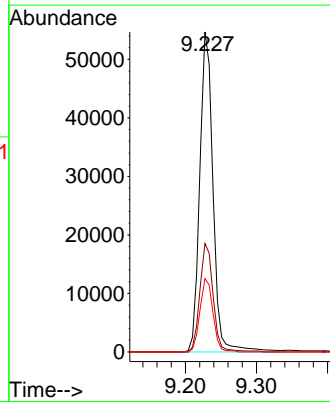
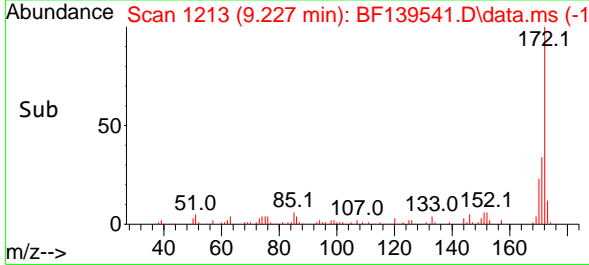
Reviewed By :Jagrut Upadhyay 09/26/2024  
 Supervised By :mohammad ahmed 09/27/2024

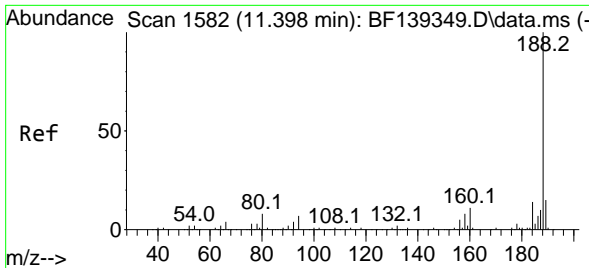


#45  
 2-Fluorobiphenyl  
 Concen: 7.372 ng  
 RT: 9.227 min Scan# 1213  
 Delta R.T. -0.006 min  
 Lab File: BF139541.D  
 Acq: 25 Sep 2024 21:12



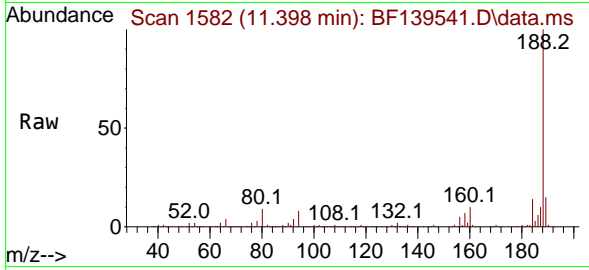
Tgt Ion: 172 Resp: 71353  
 Ion Ratio Lower Upper  
 172 100  
 171 33.9 28.3 42.5  
 170 22.9 19.0 28.6





#64  
 Phenanthrene-d10  
 Concen: 20.000 ng  
 RT: 11.398 min Scan# 11  
 Delta R.T. -0.000 min  
 Lab File: BF139541.D  
 Acq: 25 Sep 2024 21:12

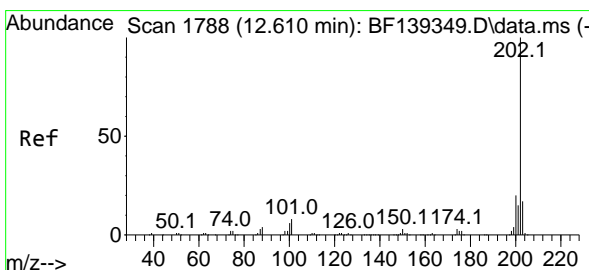
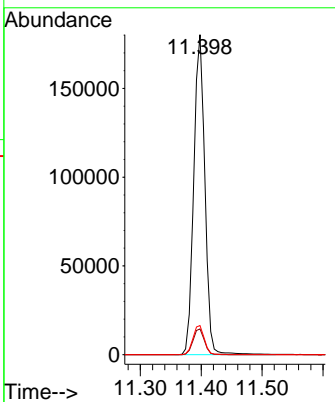
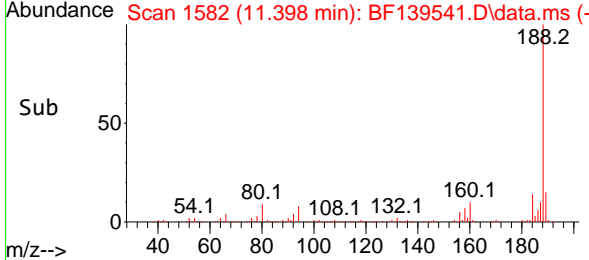
Instrument : BNA\_F  
 ClientSampleId : PL-03-09242024



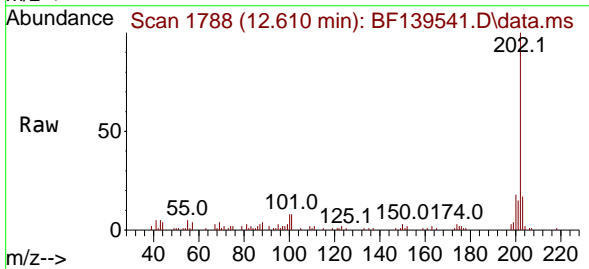
Tgt Ion:188 Resp: 22875  
 Ion Ratio Lower Upper  
 188 100  
 94 8.1 5.5 8.3  
 80 9.1 6.6 9.8

Manual Integrations  
 APPROVED

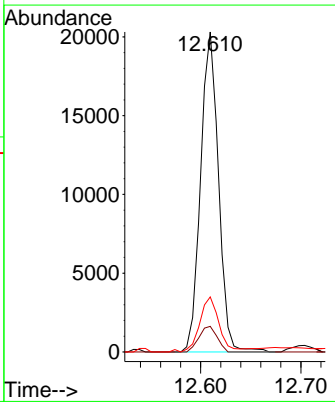
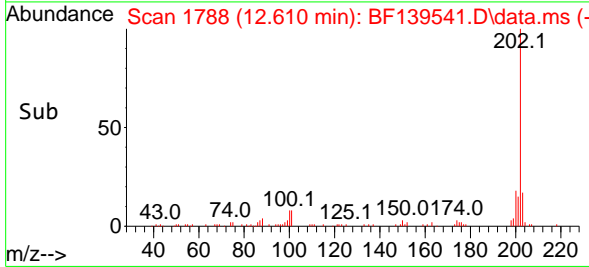
Reviewed By :Jagrut Upadhyay 09/26/2024  
 Supervised By :mohammad ahmed 09/27/2024

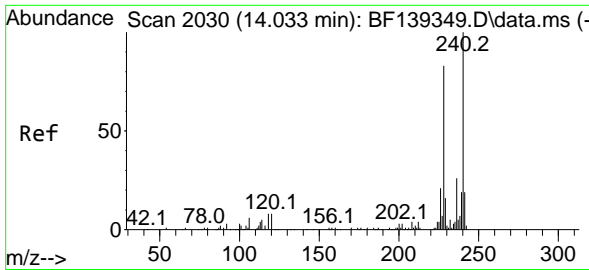


#75  
 Fluoranthene  
 Concen: 2.143 ng  
 RT: 12.610 min Scan# 1788  
 Delta R.T. -0.000 min  
 Lab File: BF139541.D  
 Acq: 25 Sep 2024 21:12



Tgt Ion:202 Resp: 25255  
 Ion Ratio Lower Upper  
 202 100  
 101 8.0 0.0 27.7  
 203 17.2 0.0 37.4





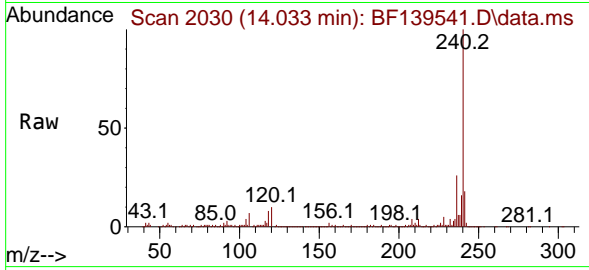
#76  
 Chrysene-d12  
 Concen: 20.000 ng  
 RT: 14.033 min Scan# 2030  
 Delta R.T. -0.000 min  
 Lab File: BF139541.D  
 Acq: 25 Sep 2024 21:12

Instrument :

BNA\_F

ClientSampleId :

PL-03-09242024

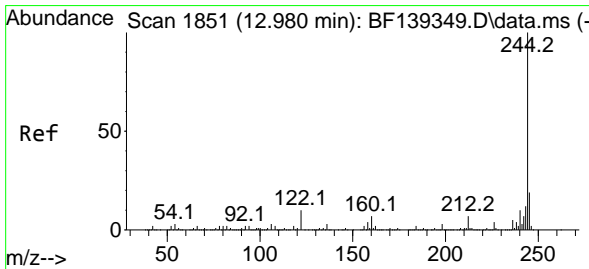
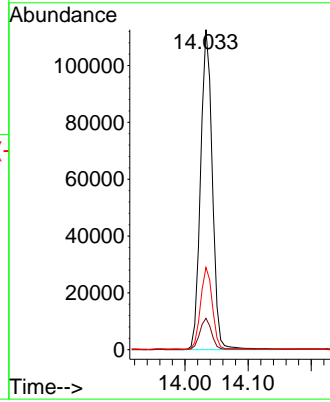
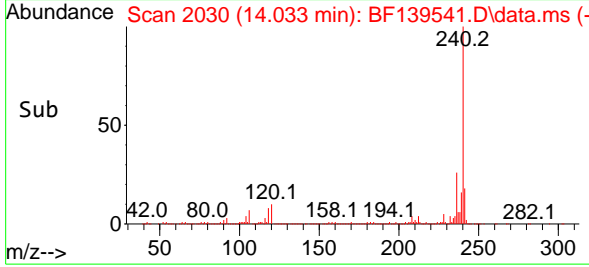


Tgt Ion:240 Resp: 145730  
 Ion Ratio Lower Upper  
 240 100  
 120 9.8 6.2 9.2  
 236 25.7 20.9 31.3

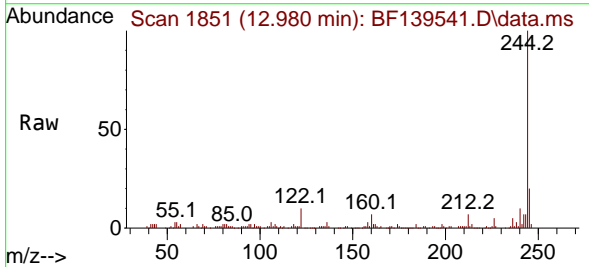
Manual Integrations

APPROVED

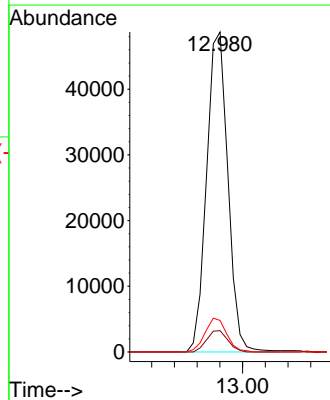
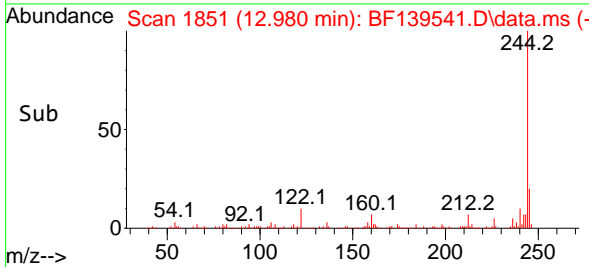
Reviewed By :Jagrut Upadhyay 09/26/2024  
 Supervised By :mohammad ahmed 09/27/2024



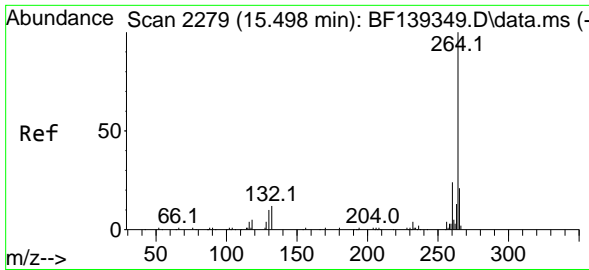
#79  
 Terphenyl-d14  
 Concen: 7.136 ng  
 RT: 12.980 min Scan# 1851  
 Delta R.T. -0.000 min  
 Lab File: BF139541.D  
 Acq: 25 Sep 2024 21:12



Tgt Ion:244 Resp: 63357  
 Ion Ratio Lower Upper  
 244 100  
 212 6.7 6.0 9.0  
 122 9.8 7.6 11.4

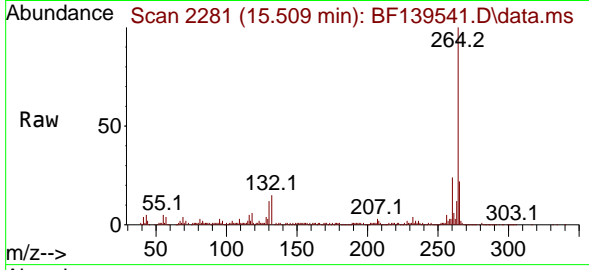






#86  
 Perylene-d12  
 Concen: 20.000 ng  
 RT: 15.509 min Scan# 21  
 Delta R.T. 0.012 min  
 Lab File: BF139541.D  
 Acq: 25 Sep 2024 21:12

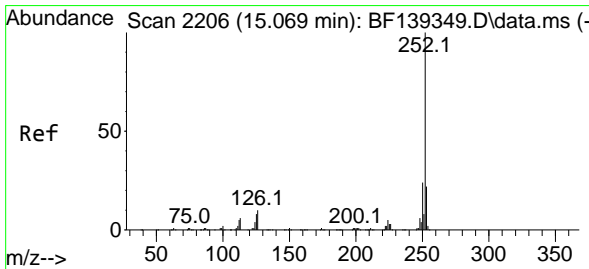
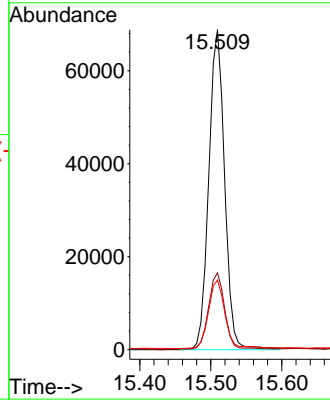
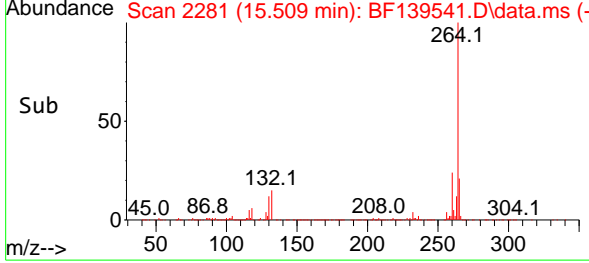
Instrument : BNA\_F  
 ClientSampleId : PL-03-09242024



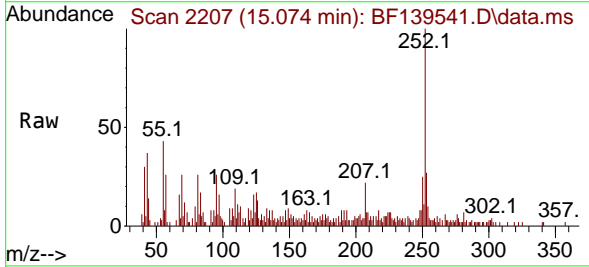
Tgt Ion:264 Resp: 106819  
 Ion Ratio Lower Upper  
 264 100  
 260 24.0 19.5 29.3  
 265 21.8 16.6 25.0

Manual Integrations  
 APPROVED

Reviewed By :Jagrut Upadhyay 09/26/2024  
 Supervised By :mohammad ahmed 09/27/2024



#88  
 Benzo(b)fluoranthene  
 Concen: 2.323 ng m  
 RT: 15.074 min Scan# 2207  
 Delta R.T. 0.006 min  
 Lab File: BF139541.D  
 Acq: 25 Sep 2024 21:12



Tgt Ion:252 Resp: 15306  
 Ion Ratio Lower Upper  
 252 100  
 253 27.3 17.6 26.4#  
 125 16.5 6.2 9.2#

