

Data Path : Z:\SVOASRV\HPCHEM1\BNA F\DATA\BF092718\
 Data File : BF109400.D
 Acq On : 27 Sep 2018 21:02
 Operator : JU/SJ
 Sample : J5077-05
 Misc :
 ALS Vial : 23 Sample Multiplier: 1

Instrument :
 BNA_F
 ClientSampleId :
 PARCEL-193-092418-1

Manual Integrations
 APPROVED

Sohil
 9/28/2018 2:40:05 PM

Quant Time: Sep 28 05:41:44 2018
 Quant Method : Z:\SVOASRV\HPCHEM1\BNA F\METHODS\8270-BF092218.M
 Quant Title : ASP BNA STANDARDS FOR 5 POINT CALIBRATION
 QLast Update : Sat Sep 22 13:32:18 2018
 Response via : Initial Calibration

Internal Standards	R.T.	QIon	Response	Conc	Units	Dev(Min)	
1) 1,4-Dichlorobenzene-d4	6.70	152	112244	20.00	ng	0.00	
21) Naphthalene-d8	7.99	136	429488	20.00	ng	0.00	
38) Acenaphthene-d10	9.73	164	190310	20.00	ng	0.00	
63) Phenanthrene-d10	11.22	188	305953	20.00	ng	0.00	
75) Chrysene-d12	13.84	240	262713	20.00	ng	0.00	
86) Perylene-d12	15.24	264	202174	20.00	ng	0.00	
System Monitoring Compounds							
5) 2-Fluorophenol	5.32	112	487854	71.59	ng	0.00	
7) Phenol-d6	6.35	99	623225	71.67	ng	-0.01	
23) Nitrobenzene-d5	7.26	82	400685	55.07	ng	-0.02	
41) 2,4,6-Tribromophenol	10.52	330	134143	71.50	ng	-0.01	
44) 2-Fluorobiphenyl	9.06	172	734536	58.21	ng	-0.01	
78) Terphenyl-d14	12.79	244	555102	51.86	ng	-0.01	
Target Compounds							
49) Dimethylphthalate	9.46	163	282743	20.427	ng		99
70) Phenanthrene	11.23	178	33797	2.212	ng		98
74) Fluoranthene	12.42	202	63381	3.882	ng		98
77) Pyrene	12.64	202	66302	3.521	ng		97
80) Benzo(a)anthracene	13.83	228	32575	2.059	ng		93
82) Chrysene	13.86	228	34862	2.223	ng		98
87) Benzo(b)fluoranthene	14.84	252	40782m	3.671	ng		
89) Benzo(a)pyrene	15.18	252	22421	2.240	ng	#	90

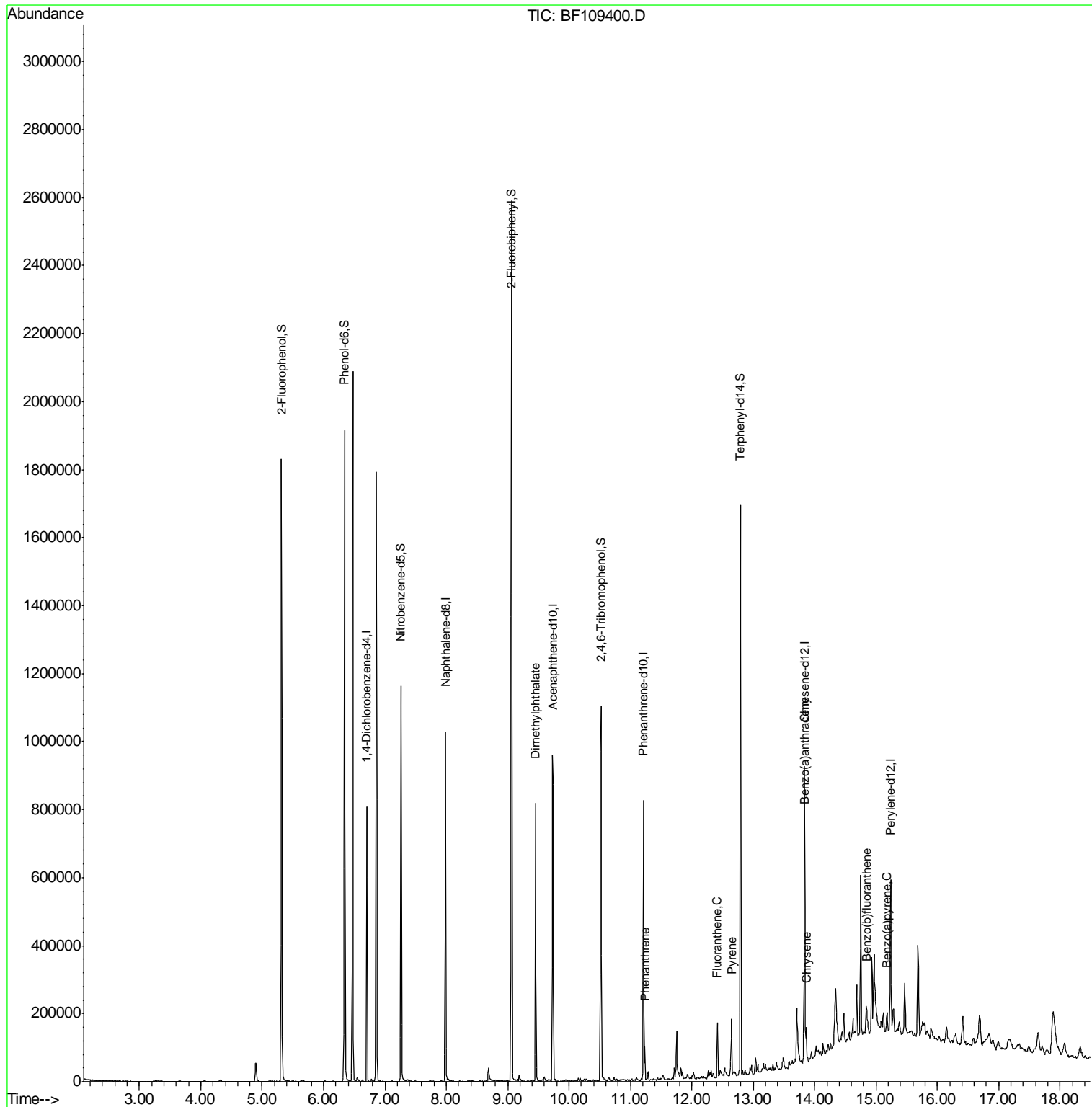
(#) = qualifier out of range (m) = manual integration (+) = signals summed

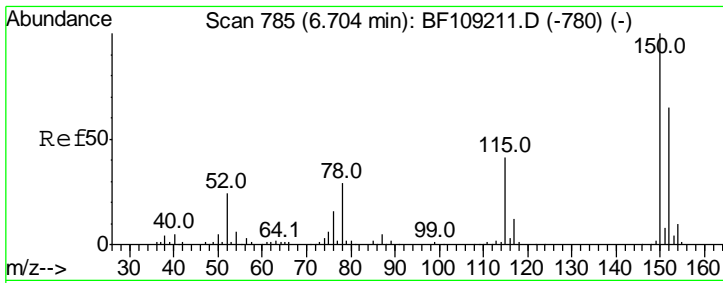
Data Path : Z:\SVOASRV\HPCHEM1\BNA F\DATA\BF092718\
 Data File : BF109400.D
 Acq On : 27 Sep 2018 21:02
 Operator : JU/SJ
 Sample : J5077-05
 Misc :
 ALS Vial : 23 Sample Multiplier: 1

Instrument :
 BNA_F
ClientSampled :
 PARCEL-193-092418-1

Manual Integrations
APPROVED
 Sohil
 9/28/2018 2:40:05 PM

Quant Time: Sep 28 05:41:44 2018
 Quant Method : Z:\SVOASRV\HPCHEM1\BNA F\METHODS\8270-BF092218.M
 Quant Title : ASP BNA STANDARDS FOR 5 POINT CALIBRATION
 QLast Update : Sat Sep 22 13:32:18 2018
 Response via : Initial Calibration





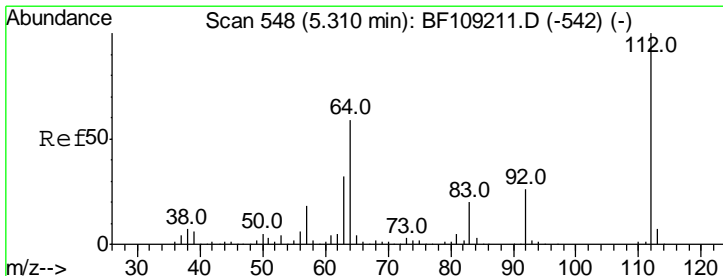
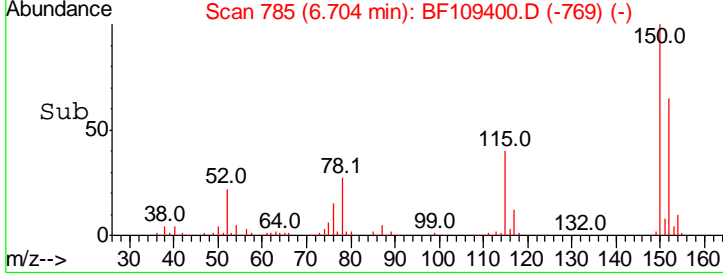
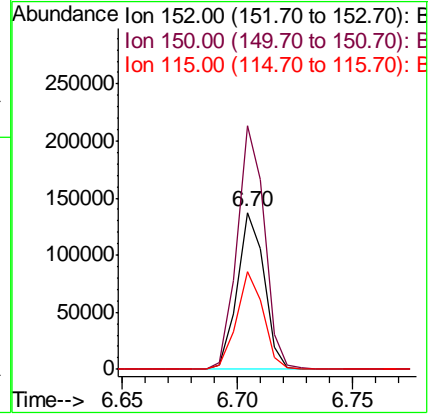
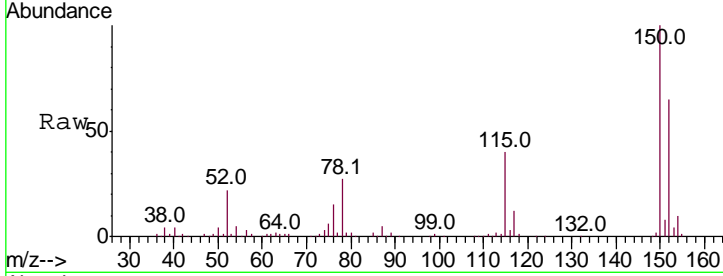
#1
 1,4-Dichlorobenzene-d4
 Concen: 20.000 ng
 RT: 6.70 min Scan# 785
 Delta R.T. -0.01 min
 Lab File: BF109400.D
 Acq: 27 Sep 2018 21:02

Instrument :
 BNA_F
ClientSampled :
 PARCEL-193-092418-1

Tgt Ion	Resp	Lower	Upper
152	112244		
152	100		
150	155.0	124.6	186.8
115	62.5	50.1	75.1

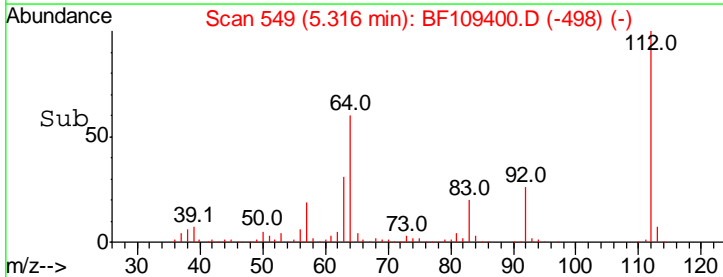
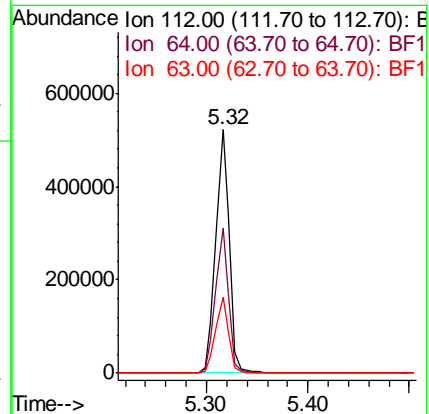
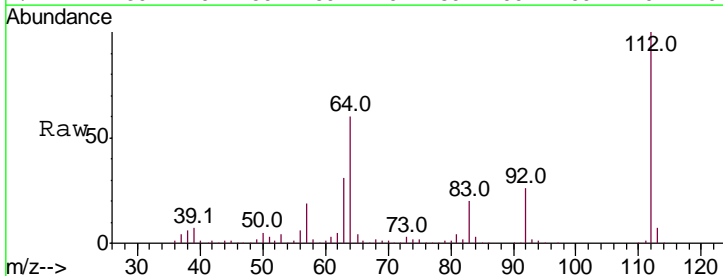
Manual Integrations
APPROVED

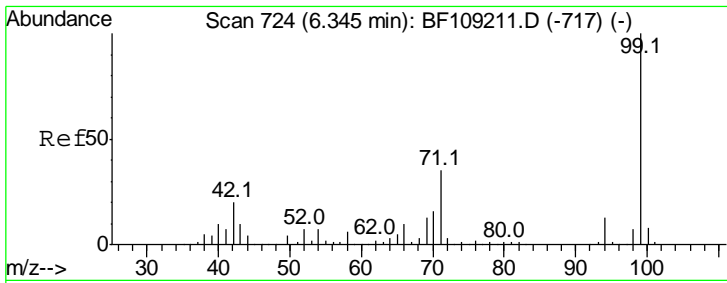
Sohil
 9/28/2018 2:40:05 PM



#5
 2-Fluorophenol
 Concen: 71.588 ng
 RT: 5.32 min Scan# 549
 Delta R.T. -0.00 min
 Lab File: BF109400.D
 Acq: 27 Sep 2018 21:02

Tgt Ion	Resp	Lower	Upper
112	487854		
112	100		
64	59.6	47.9	71.9
63	31.4	23.7	35.5





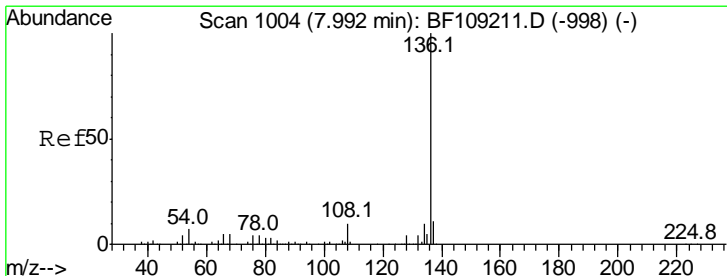
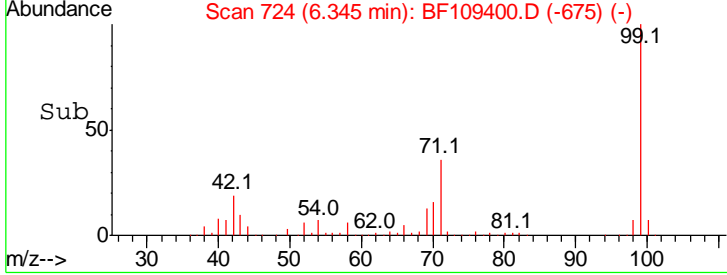
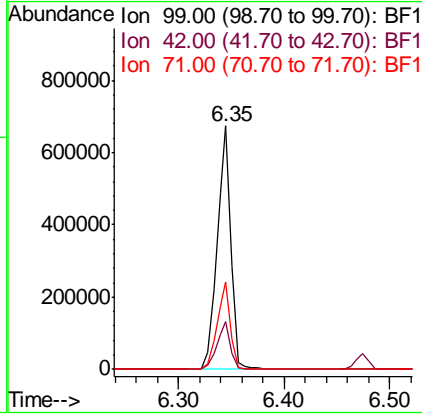
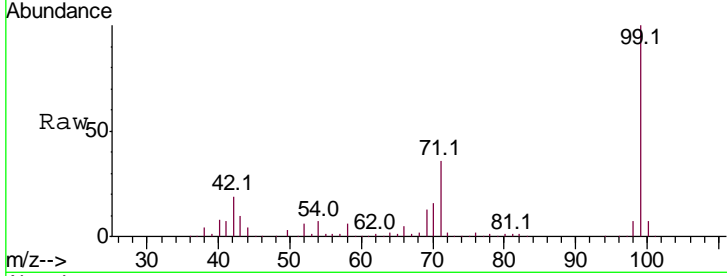
#7
 Phenol-d6
 Concen: 71.669 ng
 RT: 6.35 min Scan# 724
 Delta R.T. -0.01 min
 Lab File: BF109400.D
 Acq: 27 Sep 2018 21:02

Instrument :
 BNA_F
ClientSampled :
 PARCEL-193-092418-1

Tgt Ion	Resp	Lower	Upper
99	100		
42	19.4	14.5	21.7
71	35.9	25.4	38.0

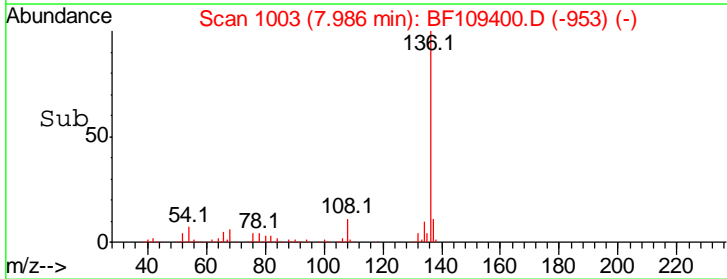
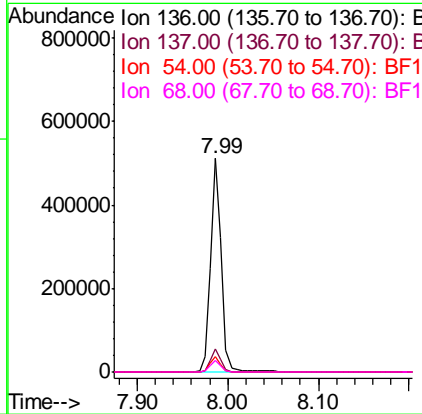
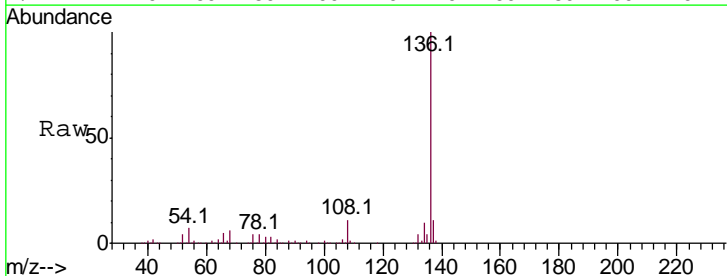
Manual Integrations
APPROVED

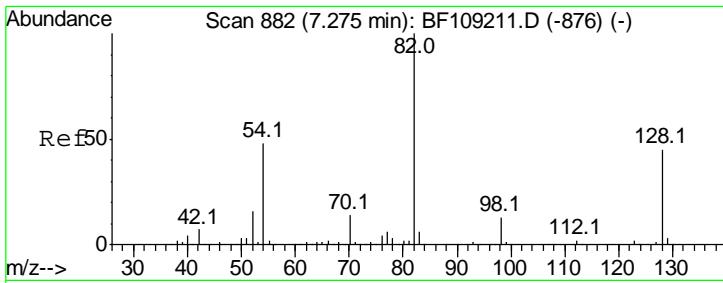
Sohil
 9/28/2018 2:40:05 PM



#21
 Naphthalene-d8
 Concen: 20.000 ng
 RT: 7.99 min Scan# 1003
 Delta R.T. -0.01 min
 Lab File: BF109400.D
 Acq: 27 Sep 2018 21:02

Tgt Ion	Resp	Lower	Upper
136	100		
137	10.9	8.9	13.3
54	7.2	6.6	9.8
68	5.7	5.0	7.4





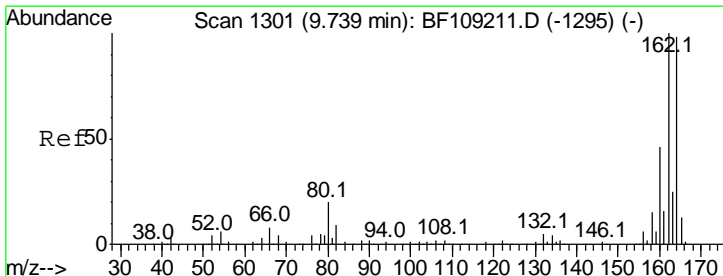
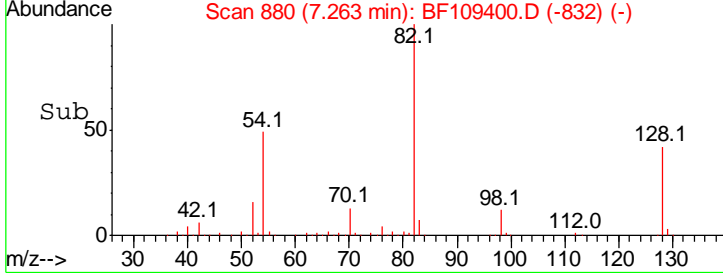
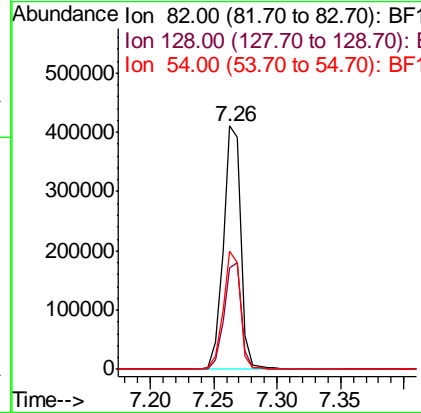
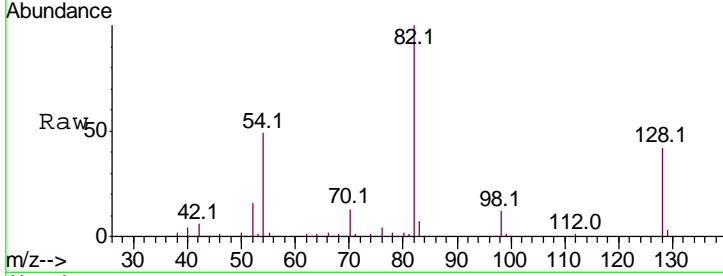
#23
 Nitrobenzene-d5
 Concen: 55.073 ng
 RT: 7.26 min Scan# 880
 Delta R.T. -0.02 min
 Lab File: BF109400.D
 Acq: 27 Sep 2018 21:02

Instrument :
 BNA_F
 ClientSampled :
 PARCEL-193-092418-1

Tgt Ion	Resp	Lower	Upper
82	400685		
82	100		
128	41.8	36.1	54.1
54	48.7	41.4	62.2

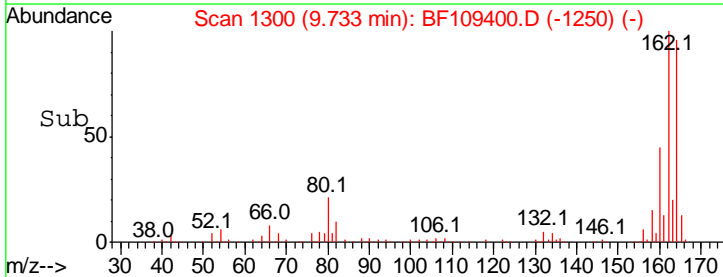
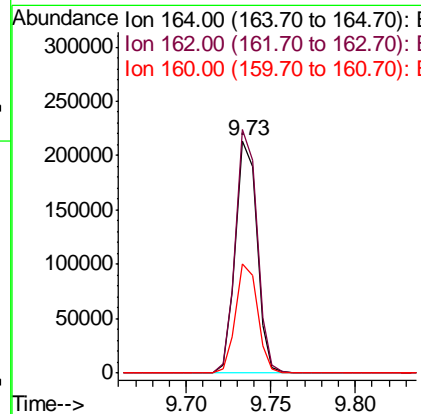
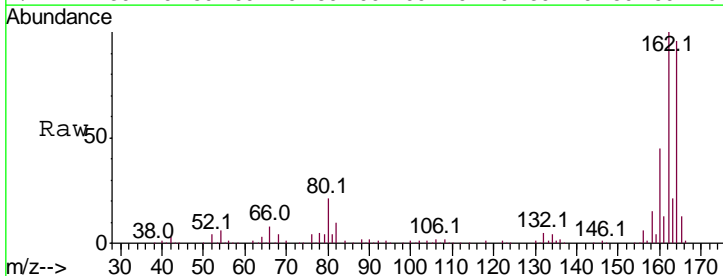
Manual Integrations
 APPROVED

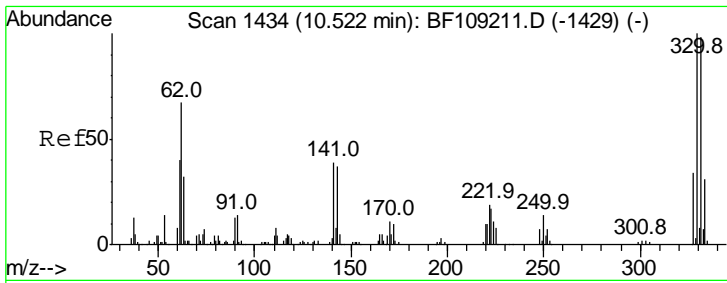
Sohil
 9/28/2018 2:40:05 PM



#38
 Acenaphthene-d10
 Concen: 20.000 ng
 RT: 9.73 min Scan# 1300
 Delta R.T. -0.01 min
 Lab File: BF109400.D
 Acq: 27 Sep 2018 21:02

Tgt Ion	Resp	Lower	Upper
164	190310		
164	100		
162	104.7	86.1	129.1
160	46.8	38.3	57.5



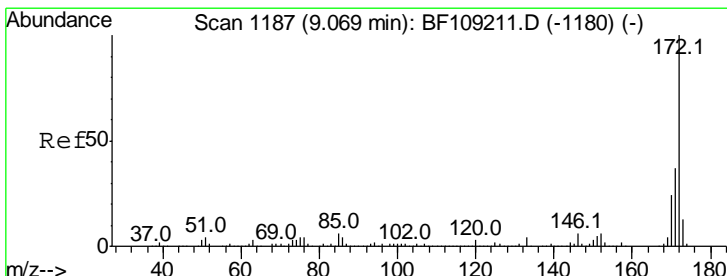
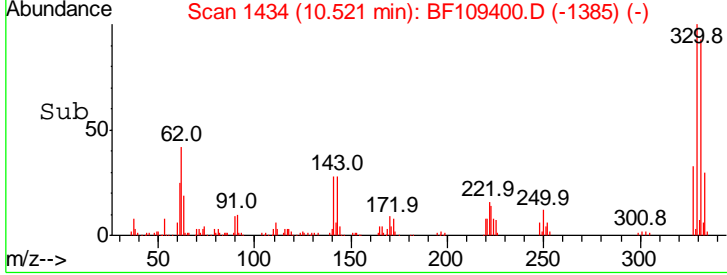
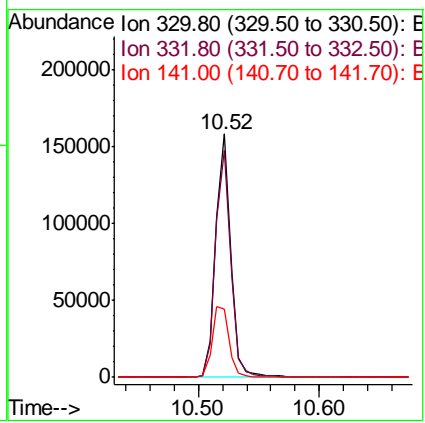
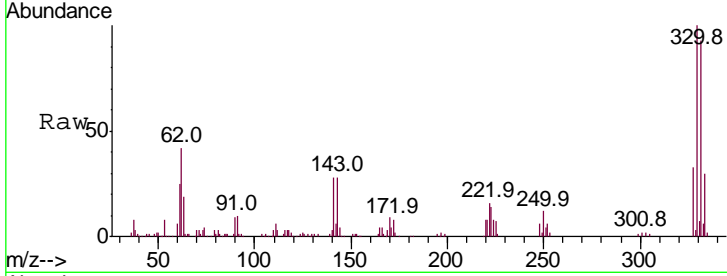


#41
 2,4,6-Tribromophenol
 Concen: 71.502 ng
 RT: 10.52 min Scan# 1434
 Delta R.T. -0.01 min
 Lab File: BF109400.D
 Acq: 27 Sep 2018 21:02

Instrument :
 BNA_F
ClientSampled :
 PARCEL-193-092418-1

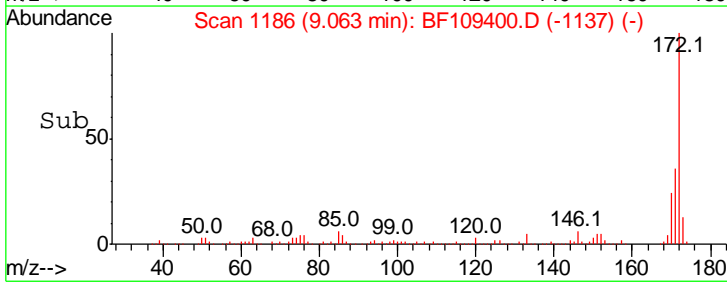
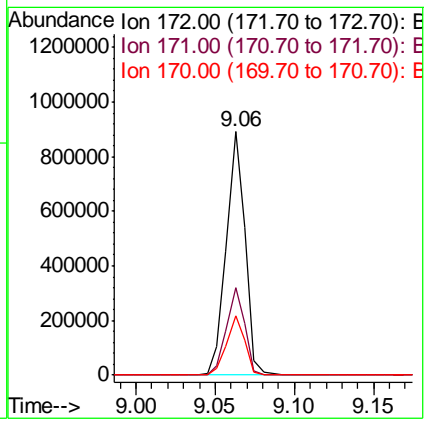
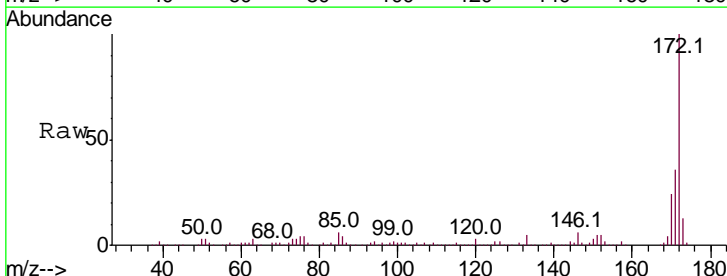
Tgt Ion	Resp	Lower	Upper
330	100		
332	95.1	77.0	115.6
141	32.7	29.9	44.9

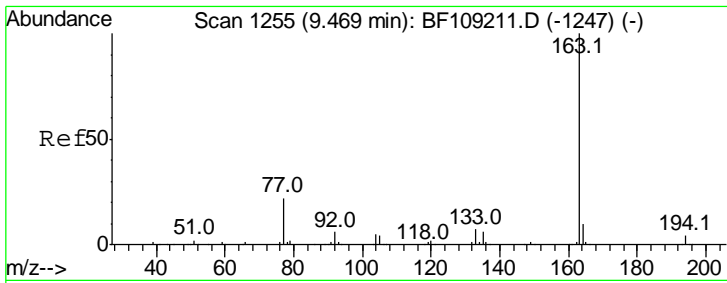
Manual Integrations
APPROVED
 Sohil
 9/28/2018 2:40:05 PM



#44
 2-Fluorobiphenyl
 Concen: 58.211 ng
 RT: 9.06 min Scan# 1186
 Delta R.T. -0.01 min
 Lab File: BF109400.D
 Acq: 27 Sep 2018 21:02

Tgt Ion	Resp	Lower	Upper
172	100		
171	35.8	29.7	44.5
170	24.2	19.6	29.4



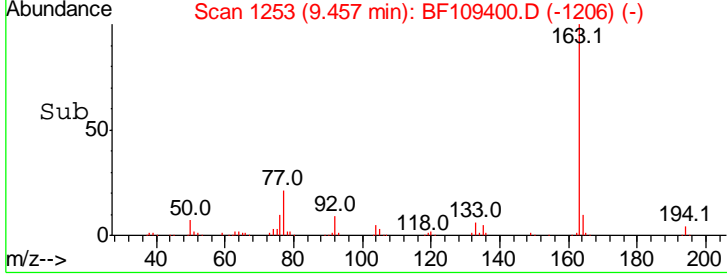
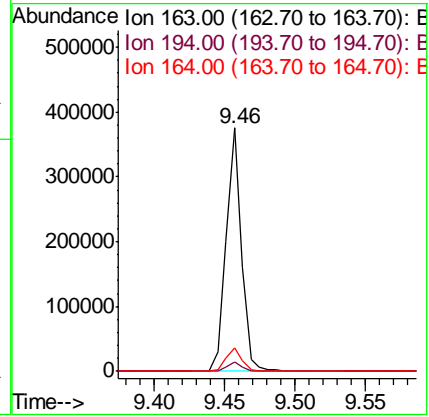
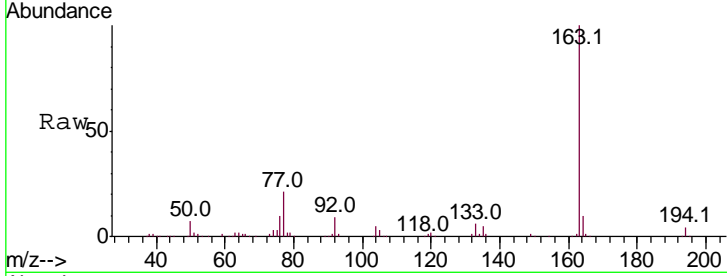


#49
 Dimethylphthalate
 Concen: 20.427 ng
 RT: 9.46 min Scan# 1253
 Delta R.T. -0.02 min
 Lab File: BF109400.D
 Acq: 27 Sep 2018 21:02

Instrument :
 BNA_F
ClientSampled :
 PARCEL-193-092418-1

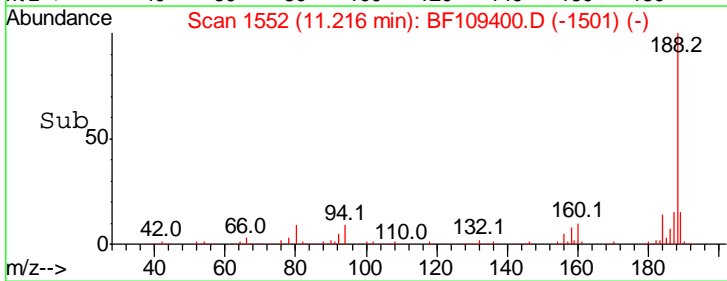
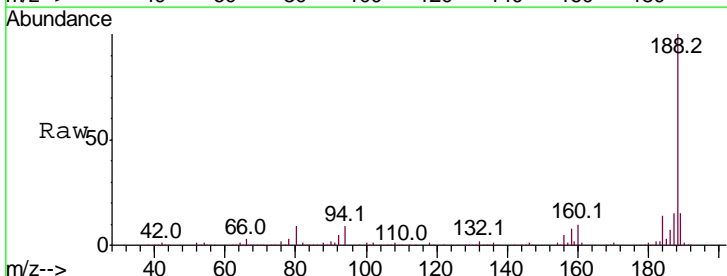
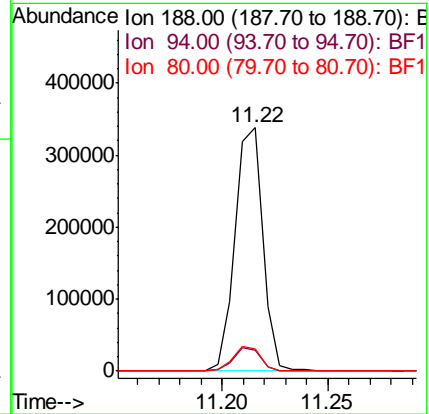
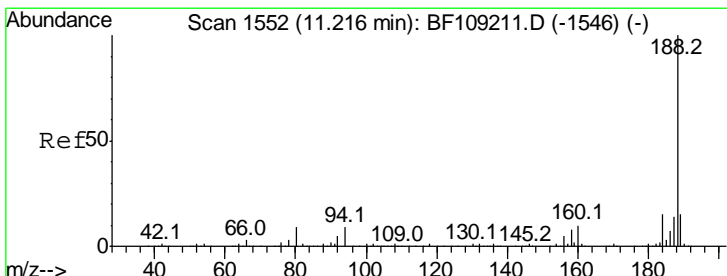
Tgt Ion	Resp	Lower	Upper
163	100		
194	3.8	2.7	4.1
164	9.8	8.2	12.2

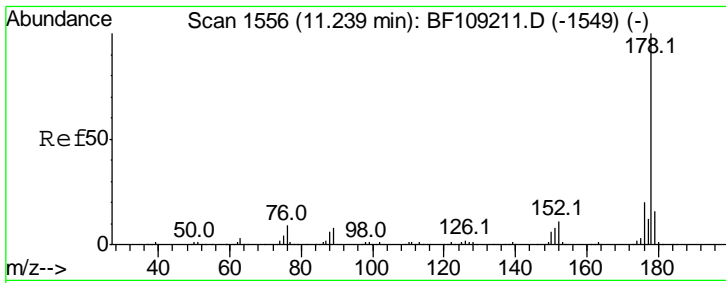
Manual Integrations
APPROVED
 Sohil
 9/28/2018 2:40:05 PM



#63
 Phenanthrene-d10
 Concen: 20.000 ng
 RT: 11.22 min Scan# 1552
 Delta R.T. -0.00 min
 Lab File: BF109400.D
 Acq: 27 Sep 2018 21:02

Tgt Ion	Resp	Lower	Upper
188	100		
94	8.5	8.5	12.7
80	9.2	9.2	13.8#





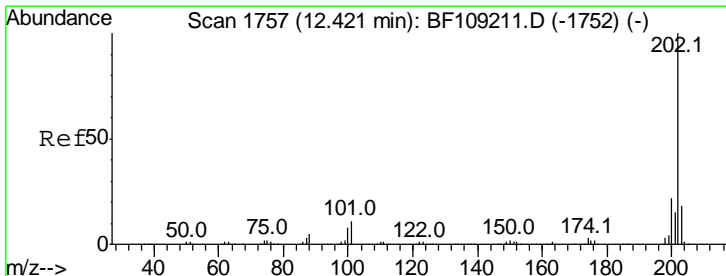
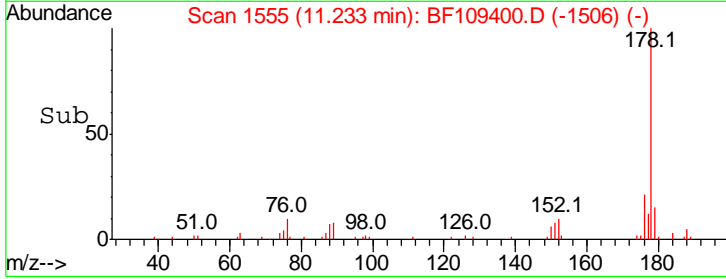
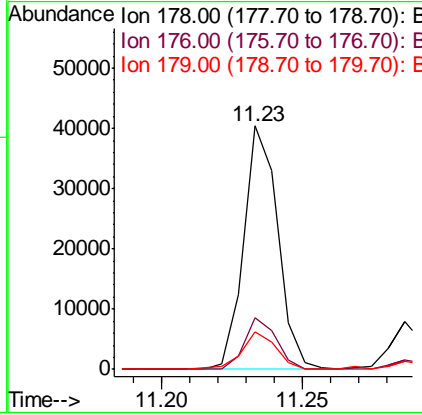
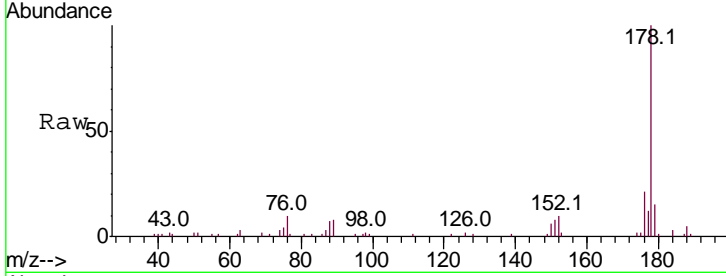
#70
 Phenanthrene
 Concen: 2.212 ng
 RT: 11.23 min Scan# 1555
 Delta R.T. -0.01 min
 Lab File: BF109400.D
 Acq: 27 Sep 2018 21:02

Instrument :
 BNA_F
 ClientSampled :
 PARCEL-193-092418-1

Tgt Ion	Resp	Lower	Upper
178	100		
176	21.0	15.8	23.8
179	15.5	13.0	19.6

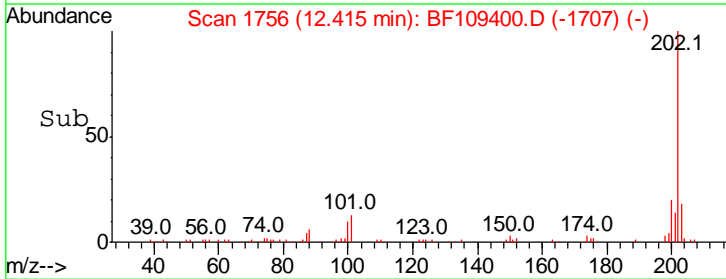
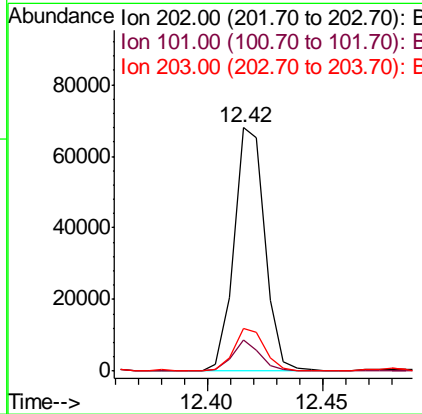
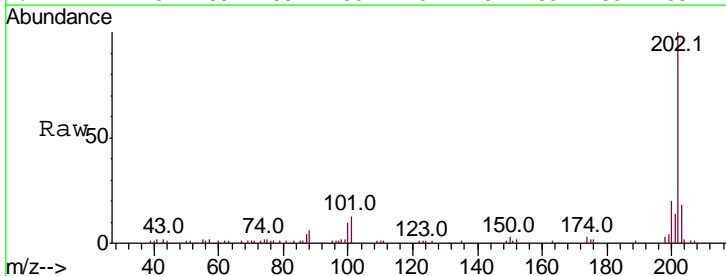
Manual Integrations
 APPROVED

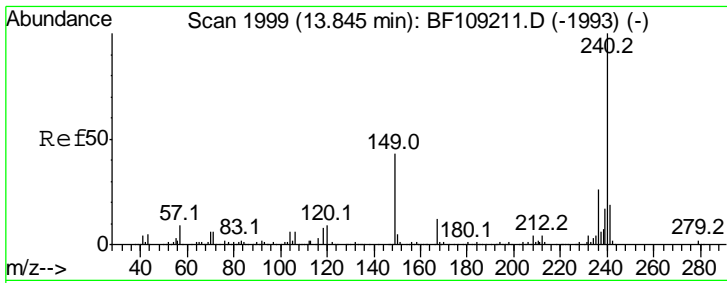
Sohil
 9/28/2018 2:40:05 PM



#74
 Fluoranthene
 Concen: 3.882 ng
 RT: 12.42 min Scan# 1756
 Delta R.T. -0.01 min
 Lab File: BF109400.D
 Acq: 27 Sep 2018 21:02

Tgt Ion	Resp	Lower	Upper
202	100		
101	12.6	0.0	34.1
203	17.6	0.0	38.1



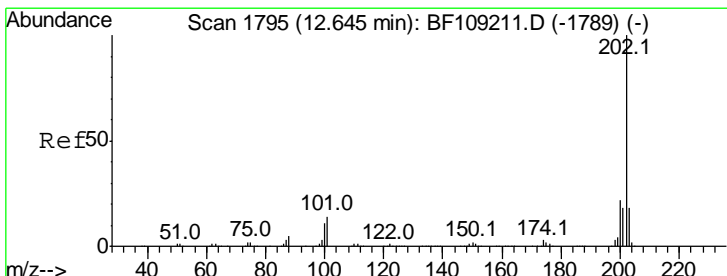
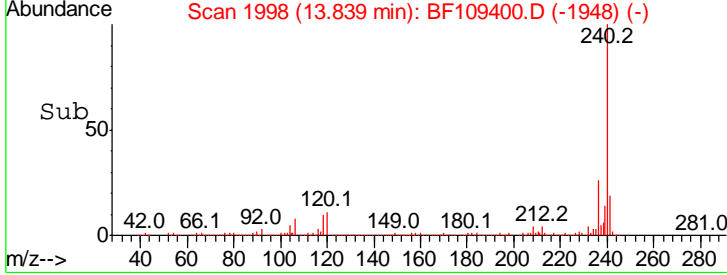
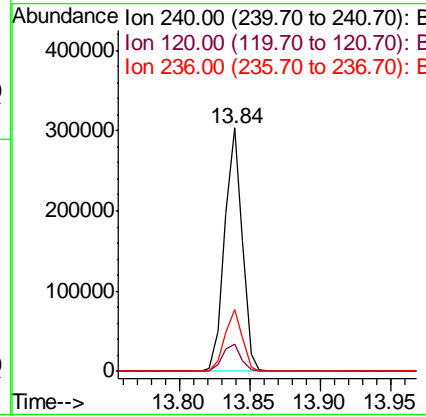
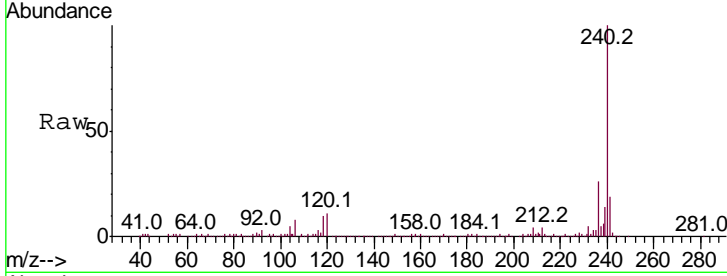


#75
 Chrysene-d12
 Concen: 20.000 ng
 RT: 13.84 min Scan# 1998
 Delta R.T. -0.01 min
 Lab File: BF109400.D
 Acq: 27 Sep 2018 21:02

Instrument :
 BNA_F
 ClientSampleId :
 PARCEL-193-092418-1

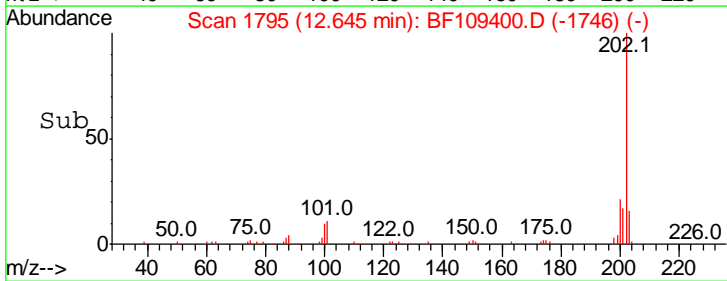
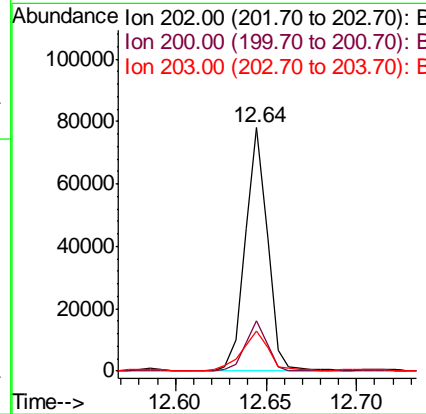
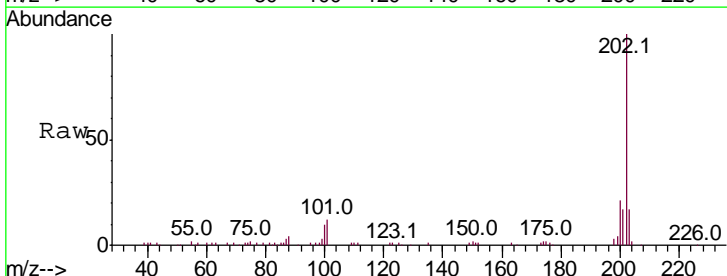
Tgt Ion	Resp	Lower	Upper
240	100		
120	11.2	9.5	14.3
236	25.7	20.7	31.1

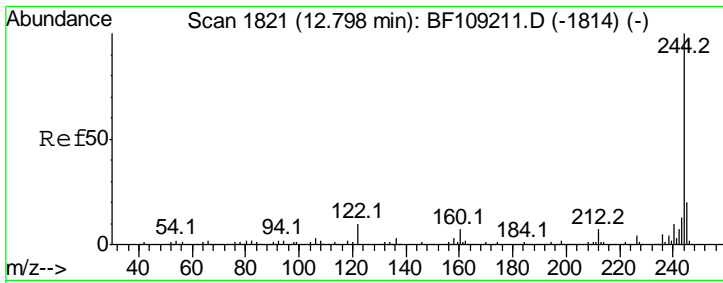
Manual Integrations
APPROVED
 Sohil
 9/28/2018 2:40:05 PM



#77
 Pyrene
 Concen: 3.521 ng
 RT: 12.64 min Scan# 1795
 Delta R.T. -0.01 min
 Lab File: BF109400.D
 Acq: 27 Sep 2018 21:02

Tgt Ion	Resp	Lower	Upper
202	100		
200	20.6	17.4	26.2
203	16.7	14.3	21.5



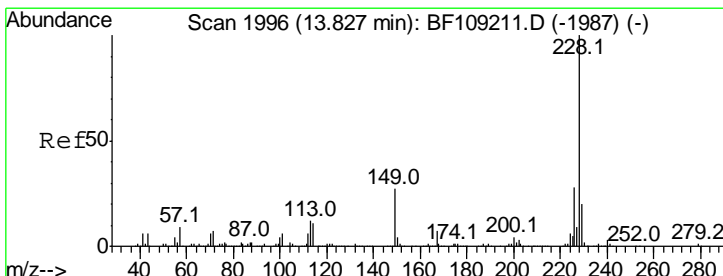
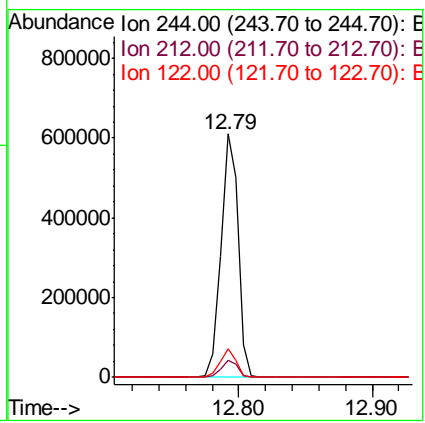
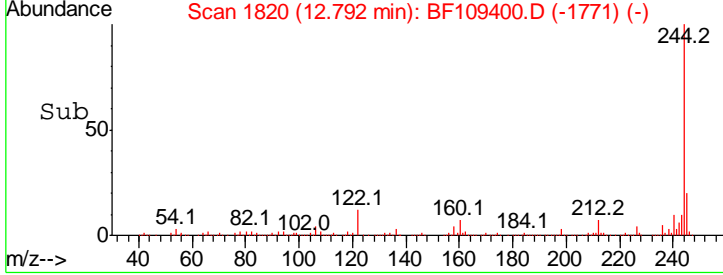
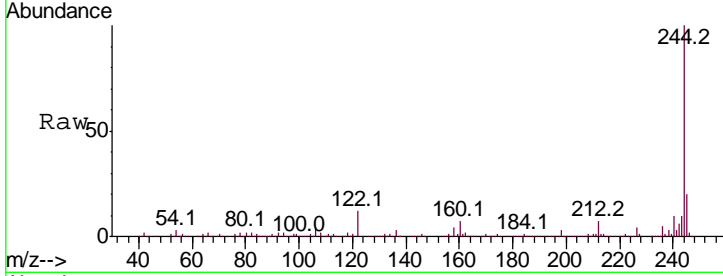


#78
 Terphenyl-d14
 Concen: 51.856 ng
 RT: 12.79 min Scan# 1820
 Delta R.T. -0.01 min
 Lab File: BF109400.D
 Acq: 27 Sep 2018 21:02

Instrument :
 BNA_F
ClientSampled :
 PARCEL-193-092418-1

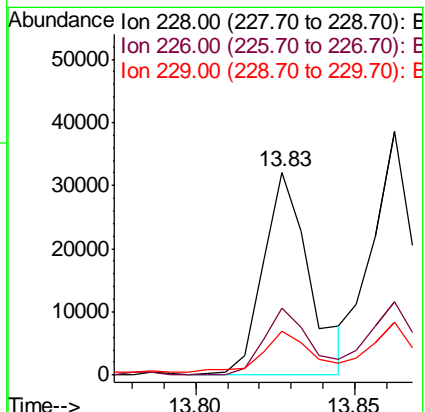
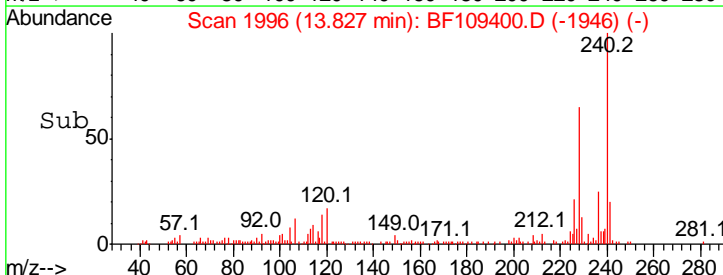
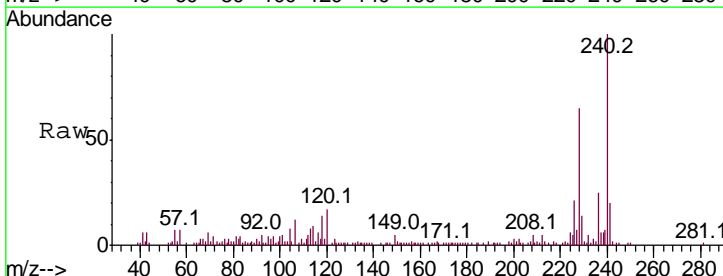
Tgt Ion	Resp	Lower	Upper
244	100		
212	6.9	5.4	8.0
122	11.5	11.0	16.4

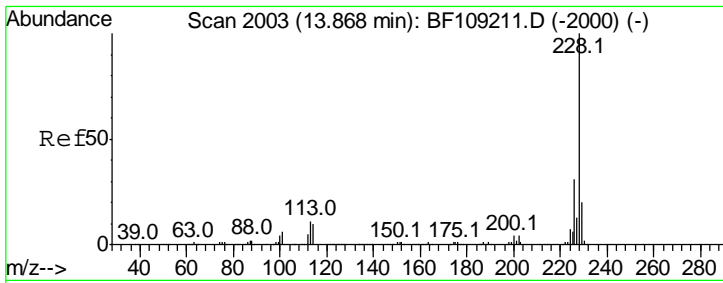
Manual Integrations
APPROVED
 Sohil
 9/28/2018 2:40:05 PM



#80
 Benzo(a)anthracene
 Concen: 2.059 ng
 RT: 13.83 min Scan# 1996
 Delta R.T. -0.01 min
 Lab File: BF109400.D
 Acq: 27 Sep 2018 21:02

Tgt Ion	Resp	Lower	Upper
228	100		
226	33.1	22.6	33.8
229	21.9	15.8	23.6



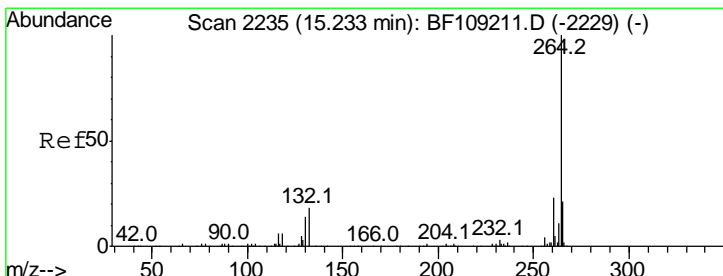
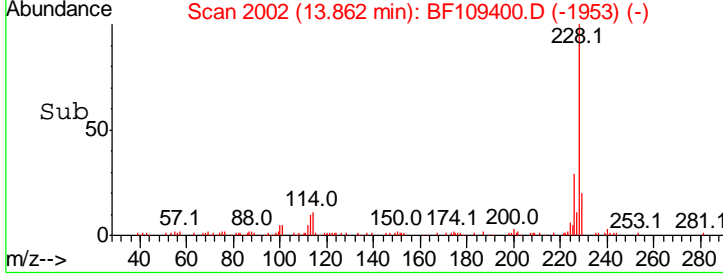
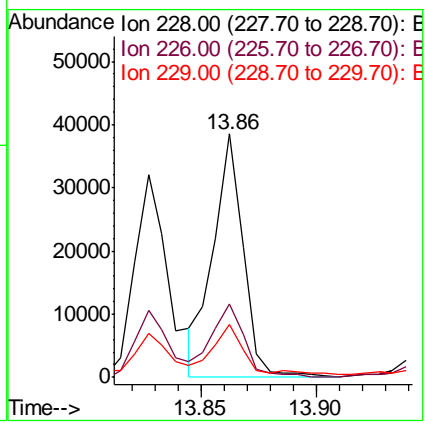
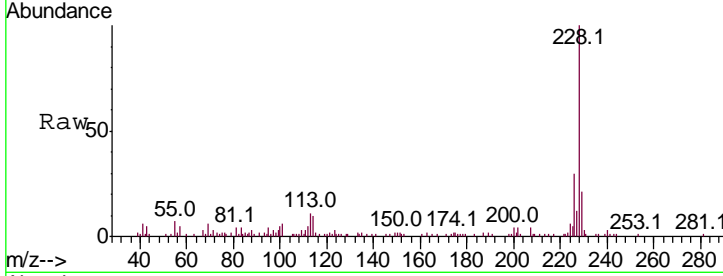


#82
 Chrysene
 Concen: 2.223 ng
 RT: 13.86 min Scan# 2002
 Delta R.T. -0.01 min
 Lab File: BF109400.D
 Acq: 27 Sep 2018 21:02

Instrument :
 BNA_F
 ClientSampled :
 PARCEL-193-092418-1

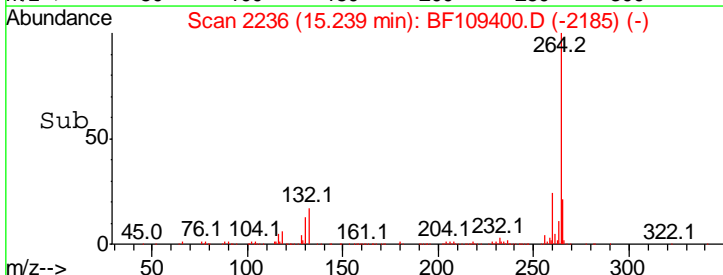
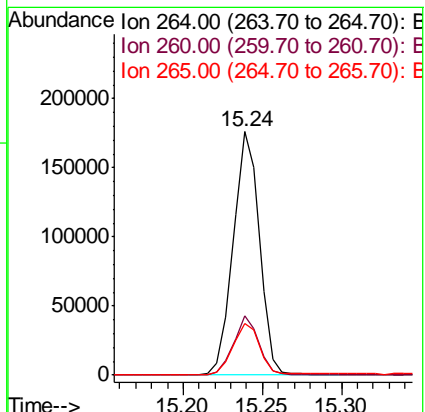
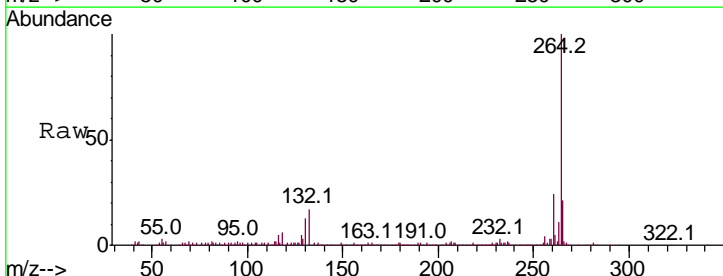
Tgt Ion	Ratio	Lower	Upper
228	100		
226	30.2	25.0	37.6
229	21.5	16.2	24.4

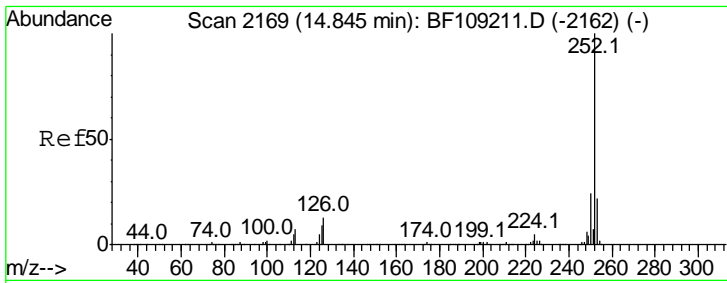
Manual Integrations
APPROVED
 Sohil
 9/28/2018 2:40:05 PM



#86
 Perylene-d12
 Concen: 20.000 ng
 RT: 15.24 min Scan# 2236
 Delta R.T. -0.00 min
 Lab File: BF109400.D
 Acq: 27 Sep 2018 21:02

Tgt Ion	Ratio	Lower	Upper
264	100		
260	24.2	19.2	28.8
265	21.4	17.5	26.3





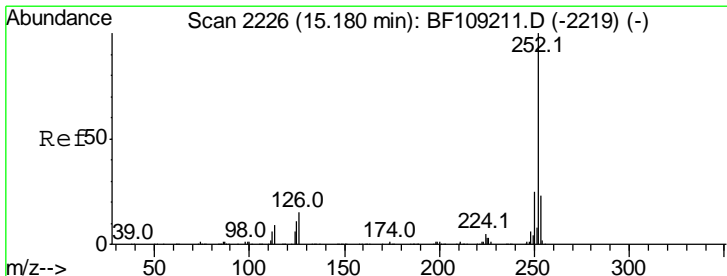
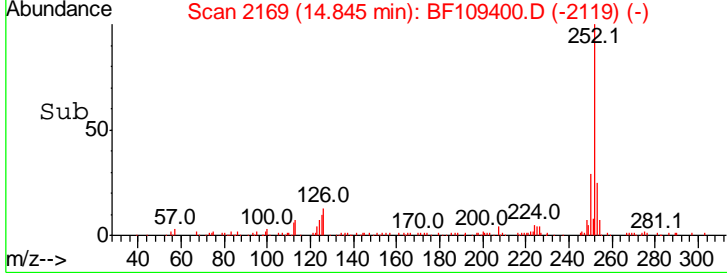
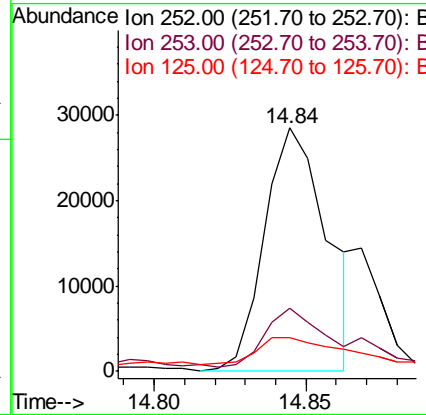
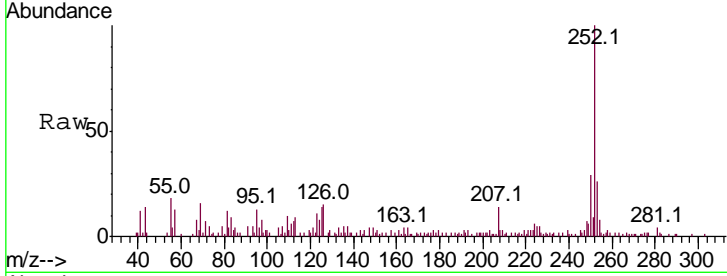
#87
 Benzo(b)fluoranthene
 Concen: 3.671 ng m
 RT: 14.84 min Scan# 2169
 Delta R.T. -0.01 min
 Lab File: BF109400.D
 Acq: 27 Sep 2018 21:02

Instrument :
 BNA_F
 ClientSampled :
 PARCEL-193-092418-1

Tgt Ion	Ratio	Lower	Upper
252	100		
253	25.7	17.0	25.6#
125	13.9	9.0	13.6#

Manual Integrations
 APPROVED

Sohil
 9/28/2018 2:40:05 PM



#89
 Benzo(a)pyrene
 Concen: 2.240 ng
 RT: 15.18 min Scan# 2226
 Delta R.T. -0.01 min
 Lab File: BF109400.D
 Acq: 27 Sep 2018 21:02

Tgt Ion	Ratio	Lower	Upper
252	100		
253	26.1	17.1	25.7#
125	16.7	9.8	14.6#

